

V&V Reference Report

L2 ASCDS Version : 8.4.3.1

Observation 7250 - L2 Version 2
Chandra X-Ray Center

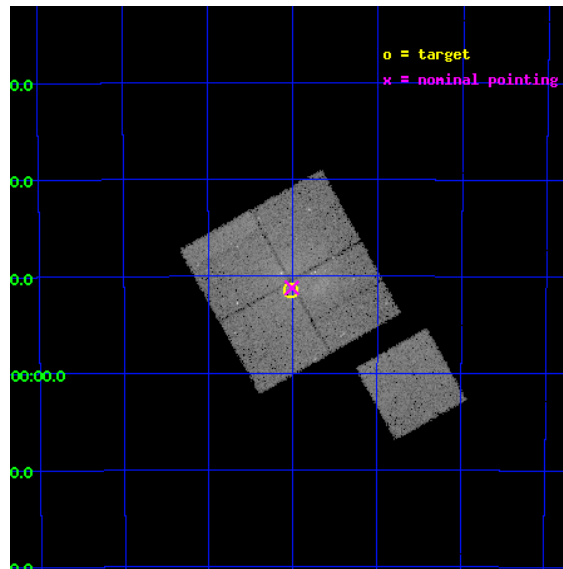
L2 Processing Date : Apr 4 2012

Contents

1	Front	2
2	OBI	3
2.1	OBI	3
2.1.1	Images	3
2.1.2	Bias	3
2.1.3	Parameters	4
2.1.4	Events	4
2.2	Compared Parameters	5
2.3	Aspect	6
2.4	Star Slots	9
2.4.1	Slot 3	9
2.4.2	Slot 4	10
2.4.3	Slot 5	11
2.4.4	Slot 6	12
2.4.5	Slot 7	13
2.5	FID Slots	14
2.5.1	Slot 0	14
2.5.2	Slot 1	15
2.5.3	Slot 2	16
A	Summary	17
A.1	Status	17
A.2	Comments	17

1 Front

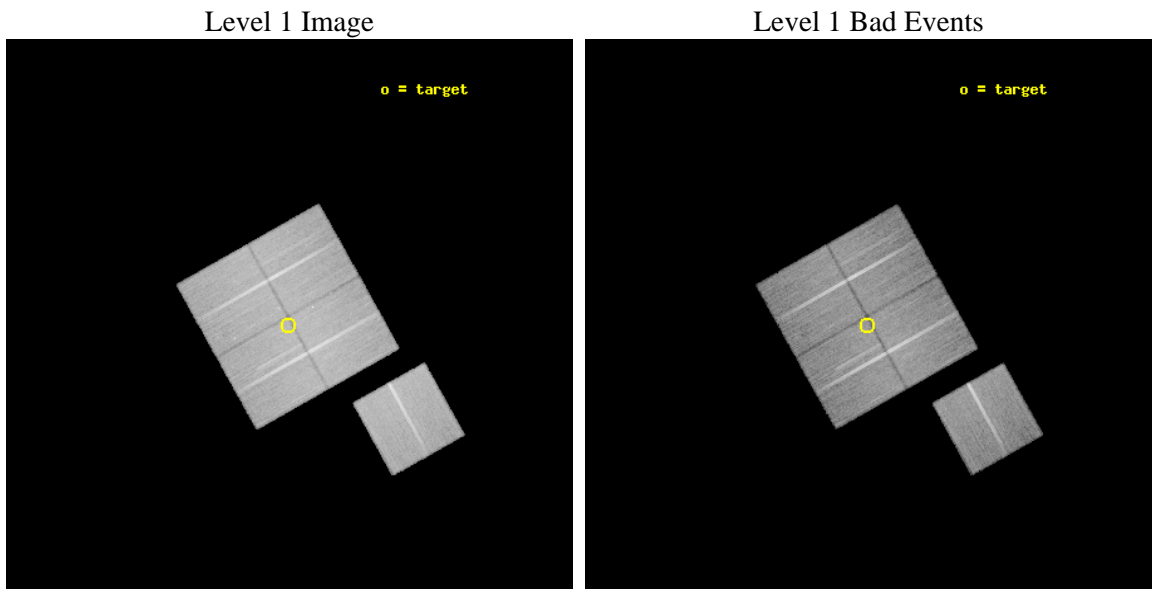
seq_num	800589	Sequence number
obs_id	7250	Observation id
title	Powerful Radio Sources in Galaxy Clusters	Proposal title
observer	Dr RODERICK JOHNSTONE	Principal investigator
object	S0463	Source name
dtcycle	0	
cycle	P	events from which exps? Prim/Second/Both
ra_targ	67.2575	Observer's specified target RA [deg]
dec_targ	-53.857222	Observer's specified target Dec [deg]
ra_nom	67.252647675405	Nominal RA [deg]
dec_nom	-53.853552670592	Nominal Dec [deg]
roll_nom	150.70476655971	Nominal Roll [deg]
revision	2	Processing version of data
ontime	29467.348064482	Sum of GTIs [s]
livetime	29082.335468474	Livetime [s]
ontime0	29467.224984288	Sum of GTIs [s]
ontime1	29470.4069646	Sum of GTIs [s]
ontime2	29464.166143805	Sum of GTIs [s]
ontime3	29467.348064482	Sum of GTIs [s]
ontime6	29467.184013933	Sum of GTIs [s]
l2events	109124	Number of level 2 events



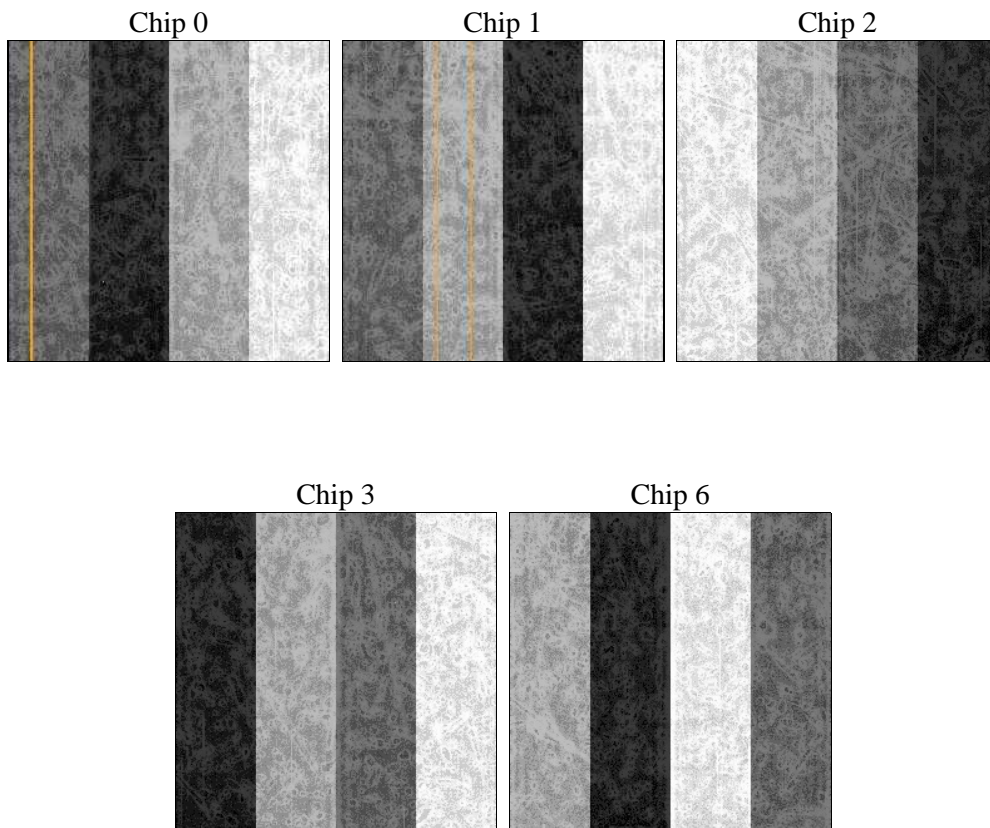
2 OBI

2.1 OBI

2.1.1 Images



2.1.2 Bias



2.1.3 Parameters

obi_num	1	Obi number	sched_exp_time	29700.000000	[s] Scheduled observation exposure time
ascdsver	8.4.3.1	Processing system revision	ontime	29467.348064482	Sum of GTIs [s]
caldsver	4.4.9	 	ontime0	29467.224984288	Sum of GTIs [s]
date	2012-04-04T19:36:28	Date and time of file creation	ontime1	29470.4069646	Sum of GTIs [s]
revision	2	Processing version of data	ontime2	29464.166143805	Sum of GTIs [s]
			ontime3	29467.348064482	Sum of GTIs [s]
			ontime6	29467.184013933	Sum of GTIs [s]
			l1events	1144085	Number of level 1 events

2.1.4 Events

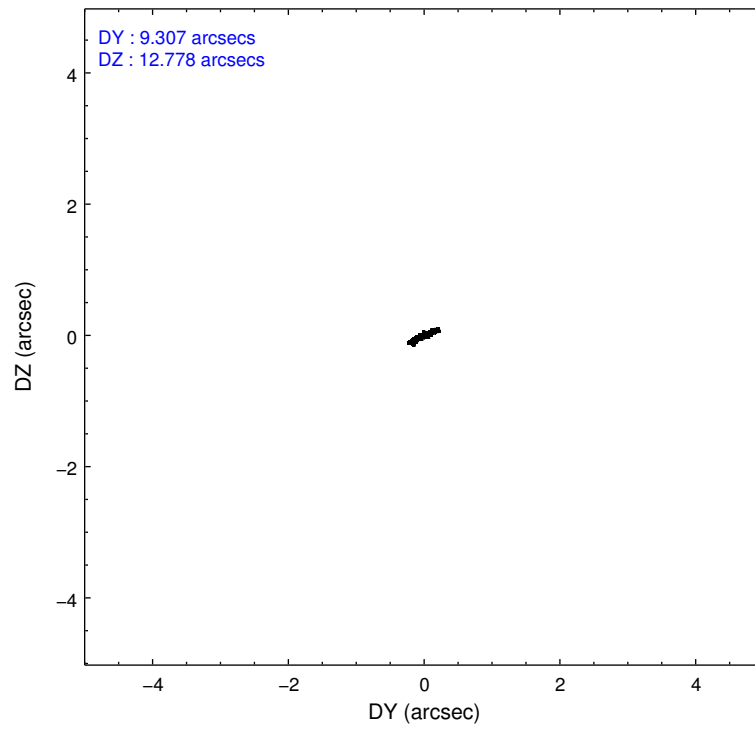
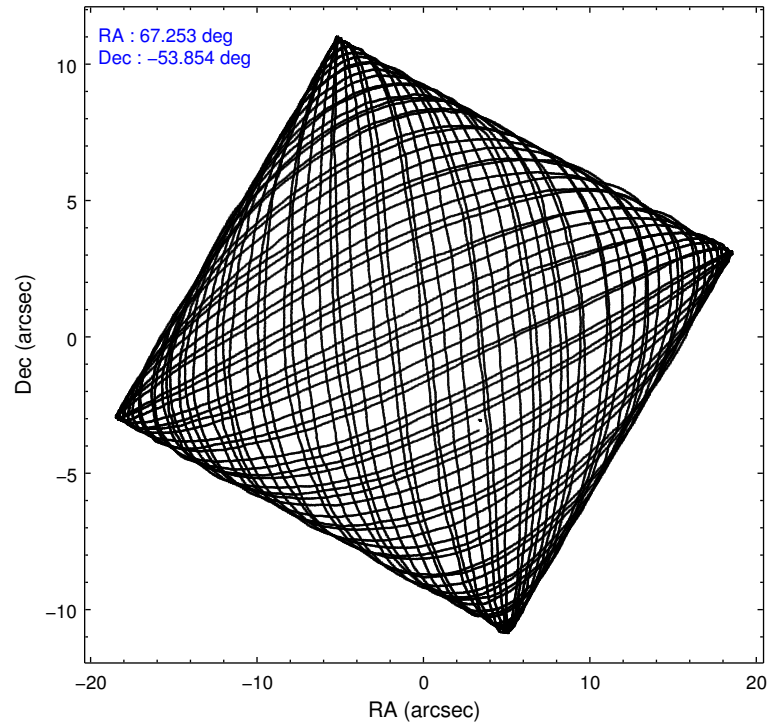
	ccd 0	ccd 1	ccd 2	ccd 3	ccd 6
level 1 events	220764	222545	244887	230400	225489
rejected events	193920	193362	217584	207045	202499
rejected %	87%	86%	88%	89%	89%

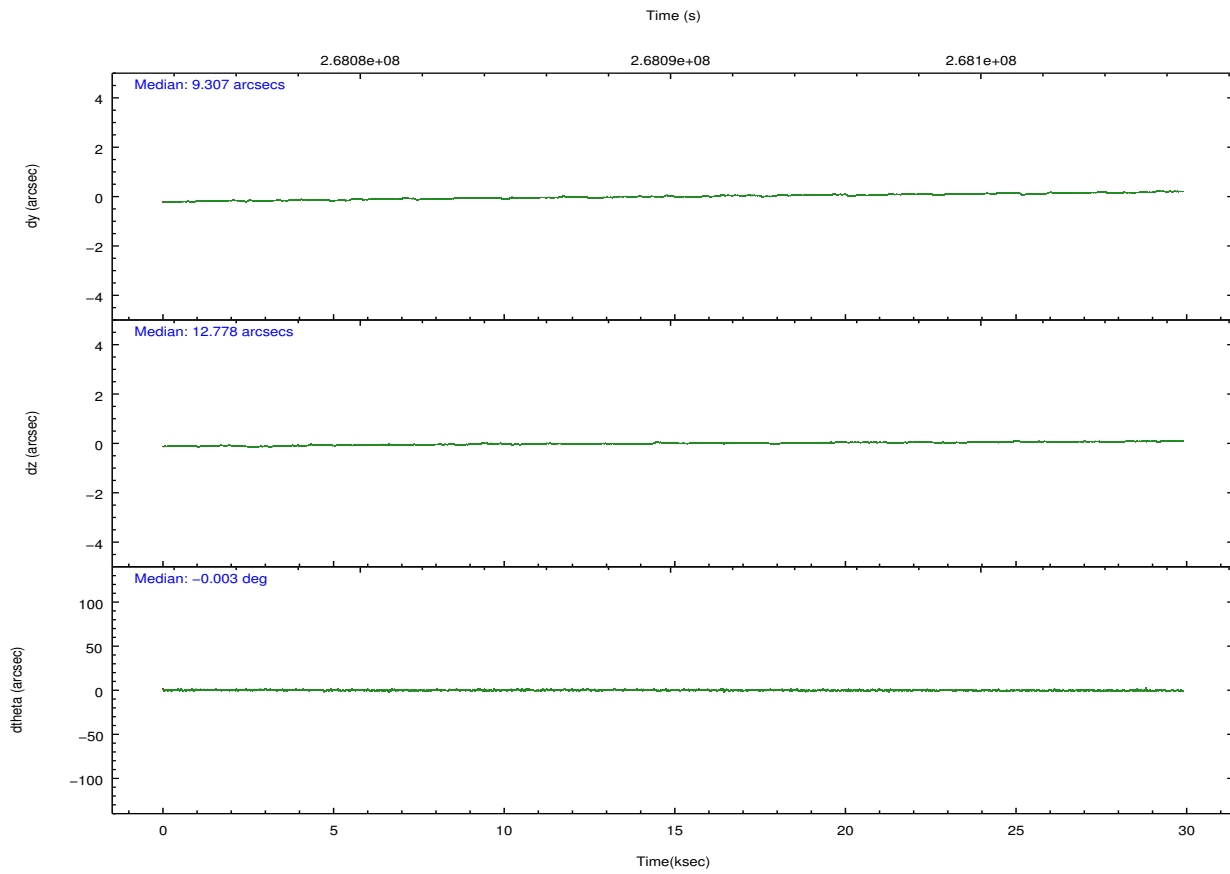
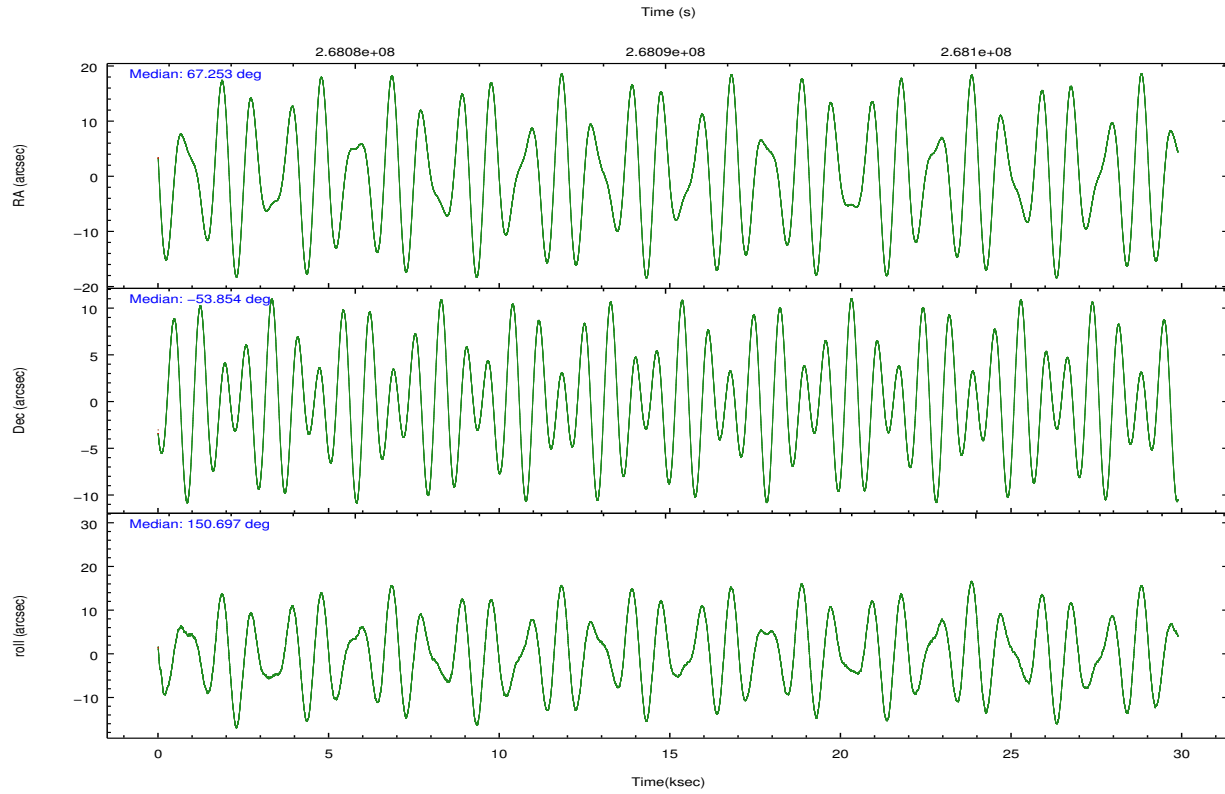
	ccd 0	ccd 1	ccd 2	ccd 3	ccd 6
grade 0 events	11789	12419	12422	9384	8150
	5%	5%	5%	4%	3%
grade 1 events	134	123	151	125	99
	0%	0%	0%	0%	0%
grade 2 events	5679	6010	5650	4733	4890
	2%	2%	2%	2%	2%
grade 3 events	2729	2857	2449	2562	2519
	1%	1%	1%	1%	1%
grade 4 events	2308	2766	2562	2448	2567
	1%	1%	1%	1%	1%
grade 5 events	7603	8480	7217	8998	8736
	3%	3%	2%	3%	3%
grade 6 events	4344	5136	4221	4231	4869
	1%	2%	1%	1%	2%
grade 7 events	186178	184754	210215	197919	193659
	84%	83%	85%	85%	85%

2.2 Compared Parameters

Parameter	Planned	Actual	Parameter	Planned	Actual
Instrument	ACIS	ACIS	Obspar format version number	7	7
Detector	ACIS-01236	ACIS-01236	Obspar file type	PREDICTED	ACTUAL
Grating	NONE	NONE	Obspar update status	NONE	UPDATED
Data mode	VFAINT	VFAINT	Number of optional ACIS chips dropped	0	0
Observation mode	POINTING	POINTING	On-chip summing requested	N	N
[deg] Pointing RA	67.299102	67.25264767540467	Subarray requested	NONE	NONE
[deg] Pointing Dec	-53.853092	-53.85355267059206	Alternating exposures requested	N	N
[deg] Pointing Roll	150.533591	150.7047665597106	[s] Primary exposure time	0.000000	3.1
[mm] SIM focus pos	-0.782348	-0.7809083437167272			
[mm] SIM defocus	0	0.001439871863259334			
[mm] SIM translation stage pos	-233.592463	-233.5874344608287			
[mm] SIM translation stage offset	0	-0.005018542100998502			
[s] Observation start time (MET)	268075327.184000	268074950.89292			
Observation start date	2006-06-30T17:21:02	2006-06-30T17:15:50			
[s] Observation end time (MET)	268105027.184000	268106020.18187			
Observation end date	2006-07-01T01:36:02	2006-07-01T01:53:40			
Read mode	TIMED	TIMED			

2.3 Aspect



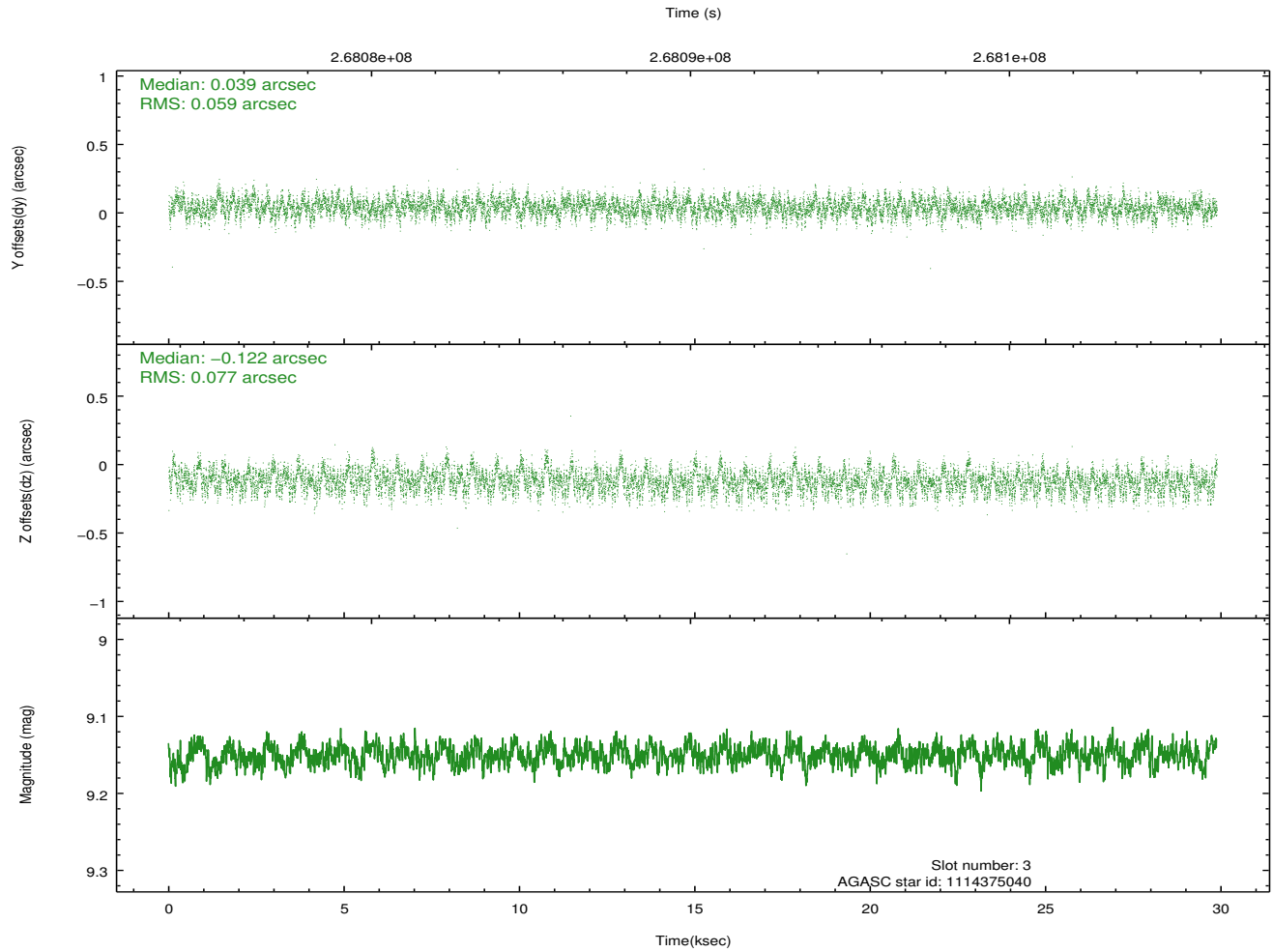
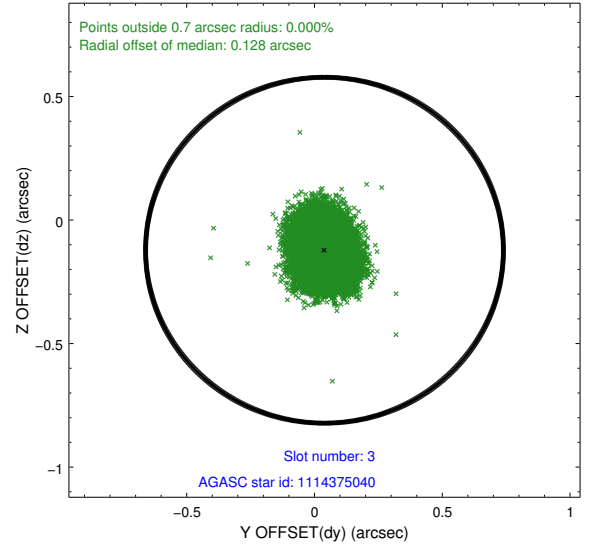
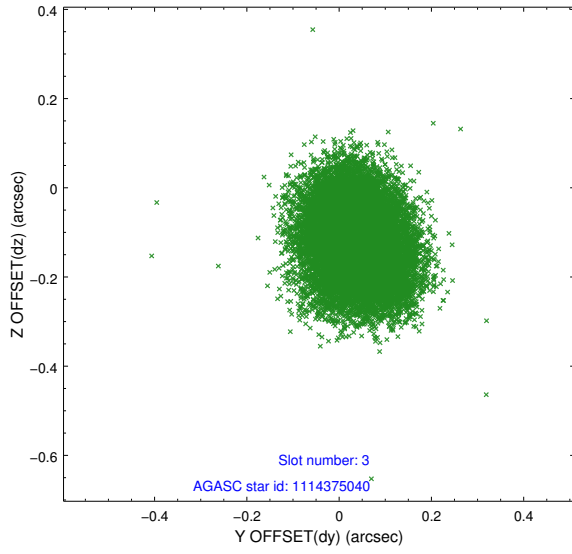


Slot Statistics

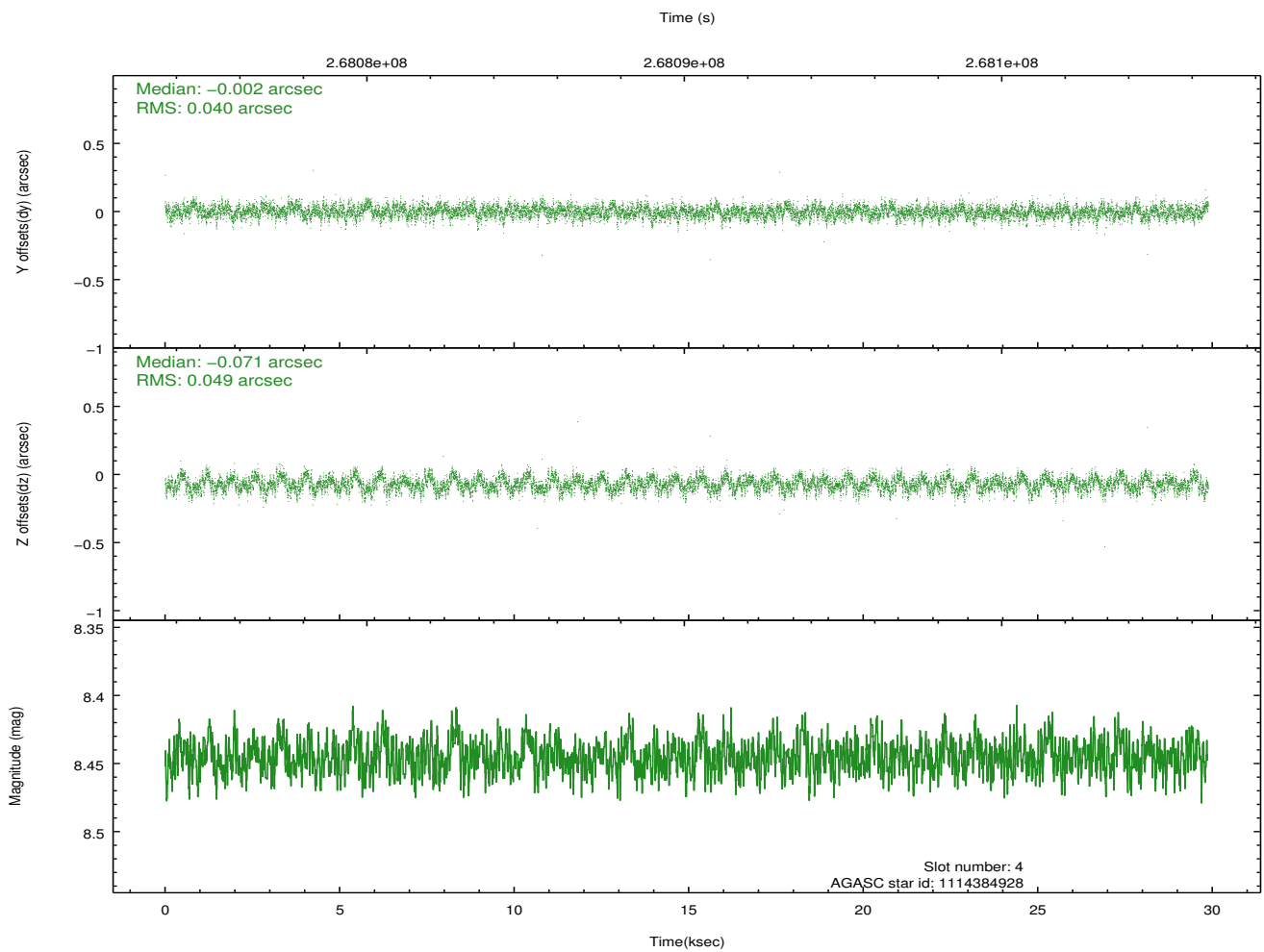
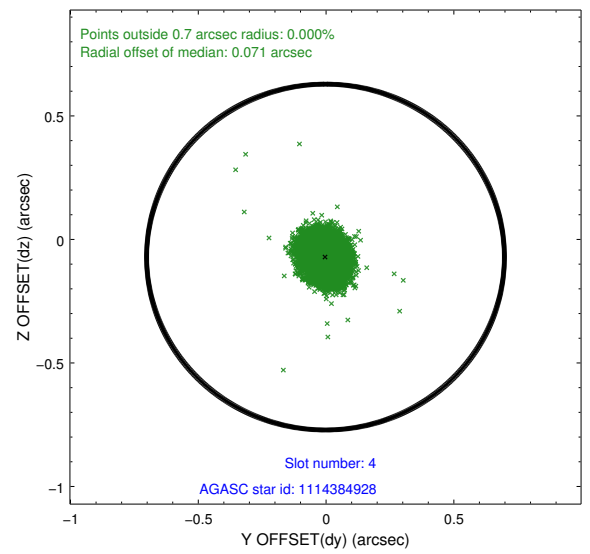
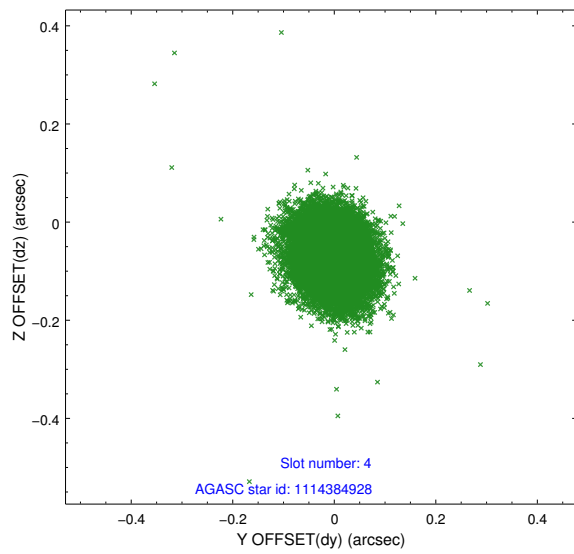
slot	status	id	mag	n_pts	med_dy	med_dz	dr1	dr2	ra	dec	mean_y	mean_z
0	FID	ACIS-I-1	7.24	7290	0.083	-0.003	0.012	0.020	0.000000	0.000000	930.41	-836.30
1	FID	ACIS-I-2	7.14	7289	-0.059	-0.059	0.010	0.017	0.000000	0.000000	-763.78	-842.86
2	FID	ACIS-I-5	7.22	7288	-0.115	0.135	0.015	0.024	0.000000	0.000000	-1818.12	1061.24
3	GUIDE	1114375040	9.15	14569	0.039	-0.122	0.105	0.166	66.595430	-54.251333	579.65	1982.67
4	GUIDE	1114384928	8.44	14574	-0.002	-0.071	0.067	0.107	66.662126	-53.704233	1442.96	206.60
5	GUIDE	1115302664	8.34	14575	-0.070	0.211	0.074	0.116	66.850561	-53.404307	1631.72	-930.08
6	GUIDE	1115305400	8.83	14569	0.016	0.000	0.076	0.125	67.305588	-54.406899	-992.60	1728.67
7	GUIDE	1115307048	8.00	14576	0.013	-0.017	0.073	0.114	67.476503	-53.930505	-464.57	58.20

2.4 Star Slots

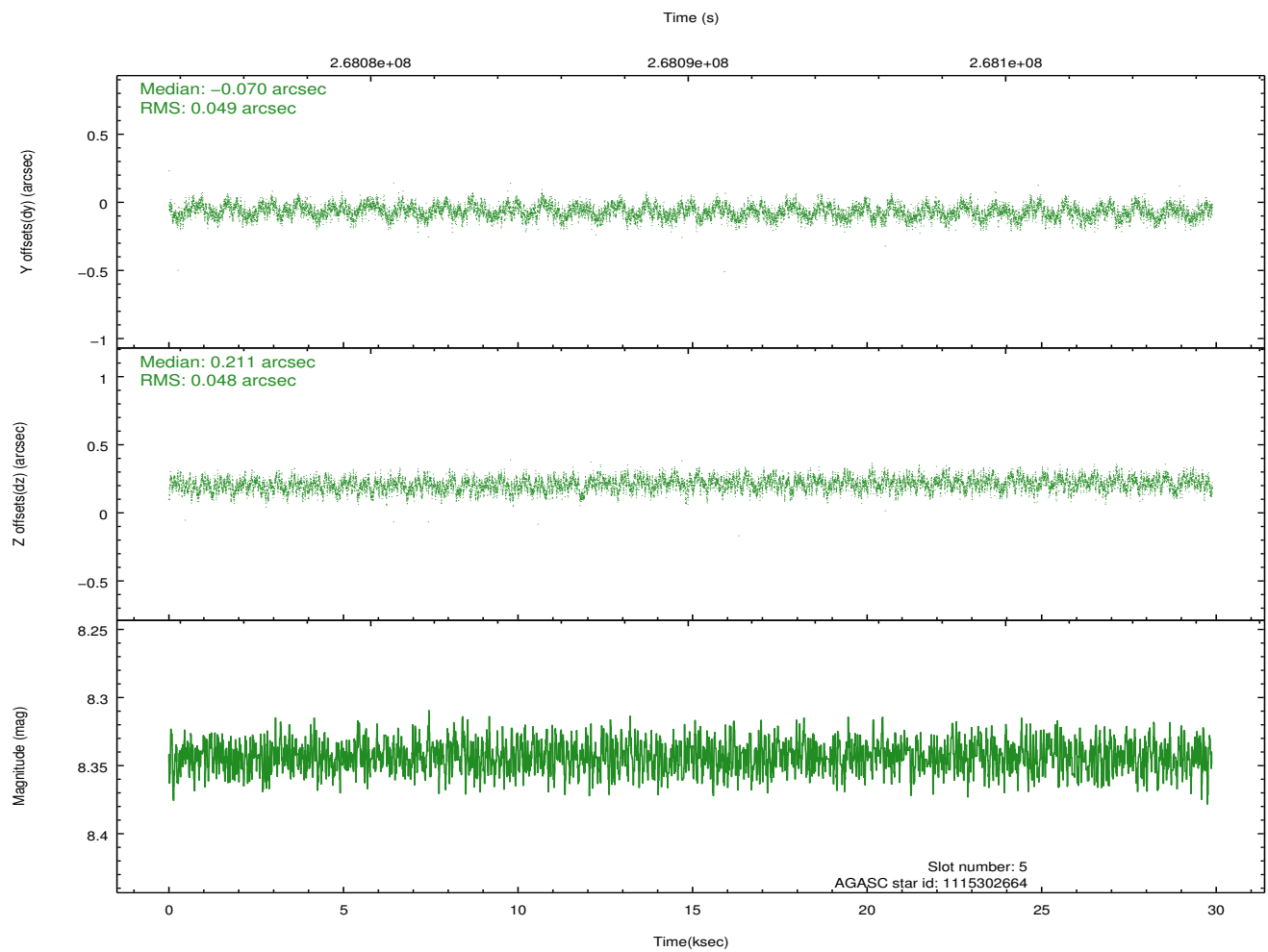
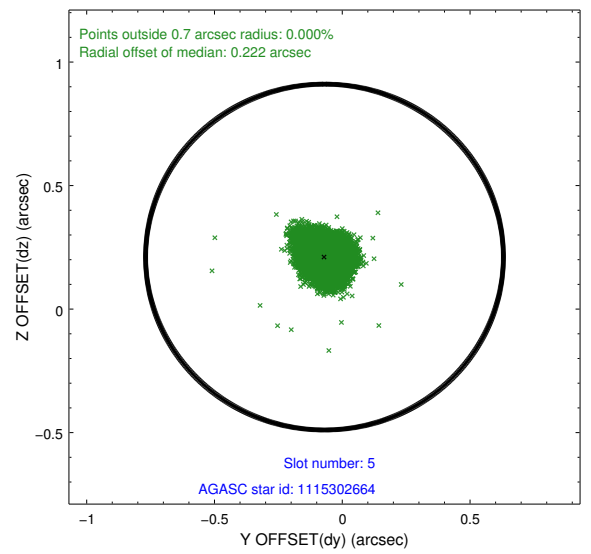
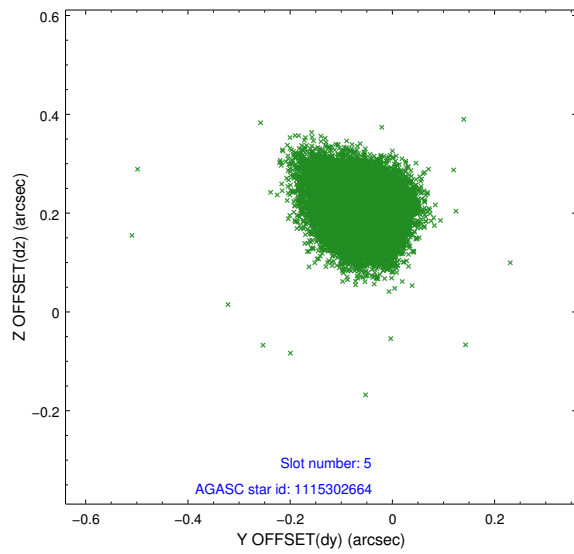
2.4.1 Slot 3



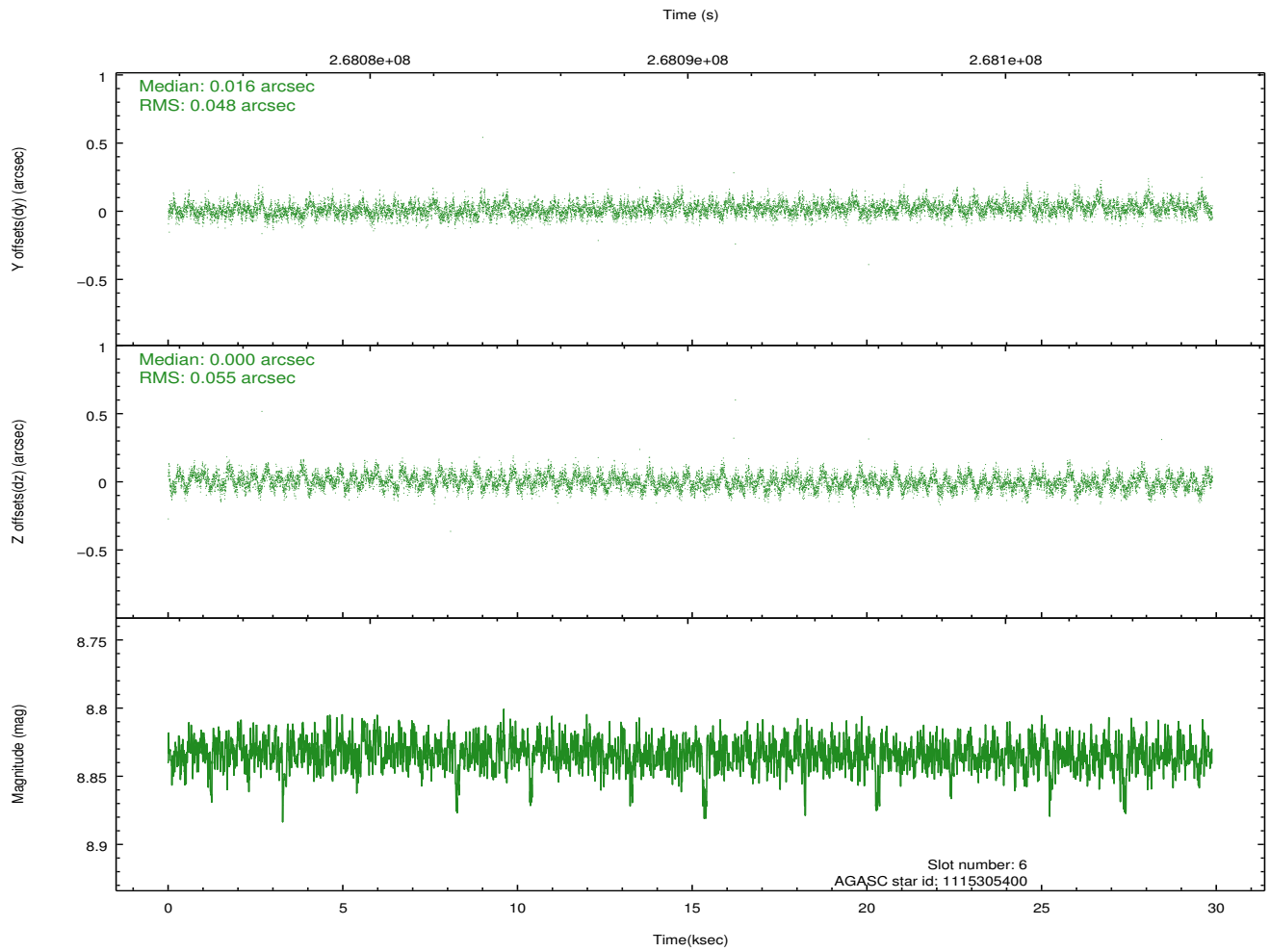
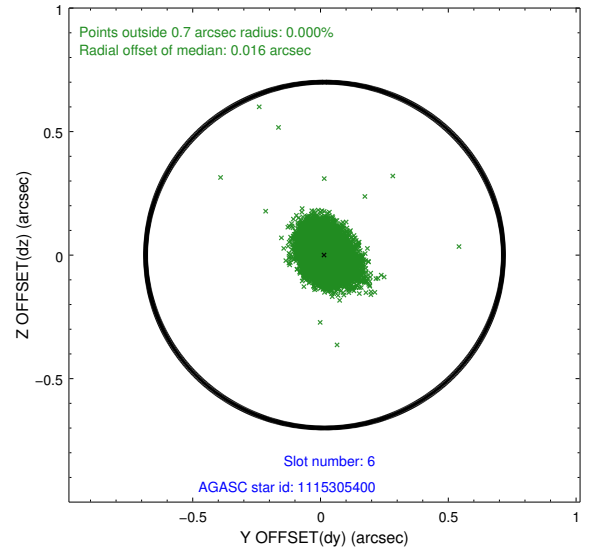
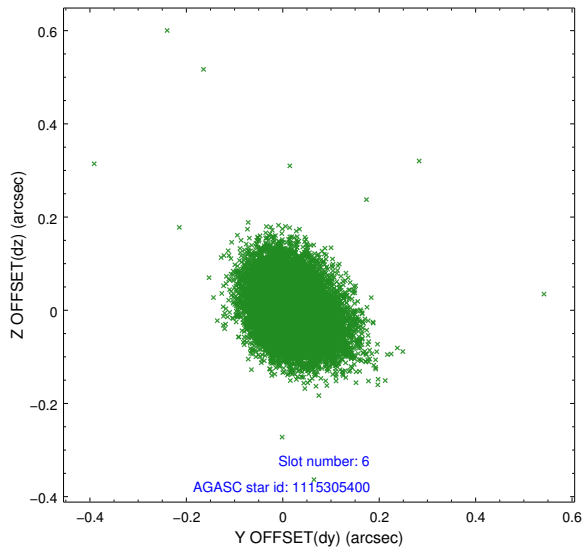
2.4.2 Slot 4



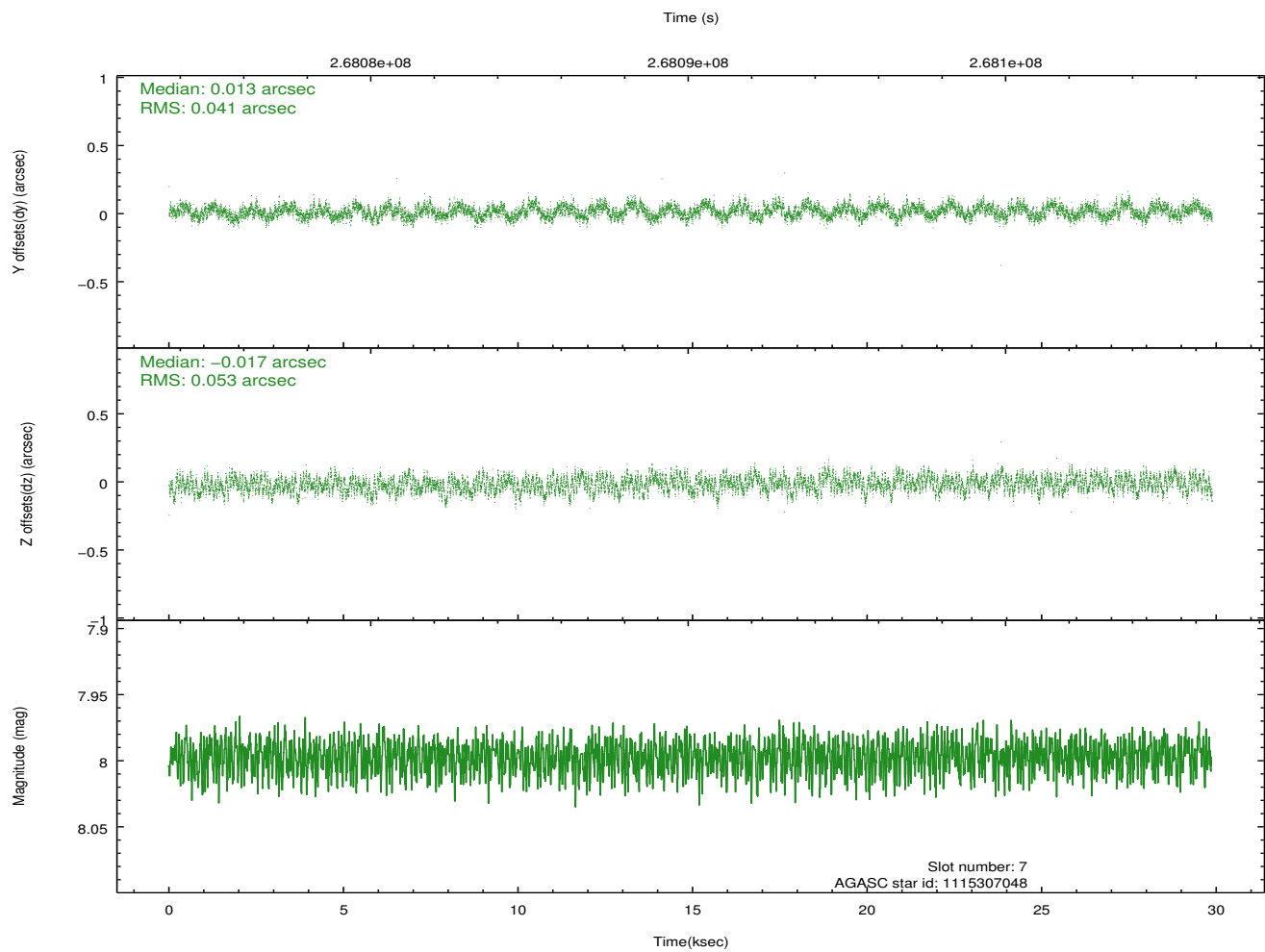
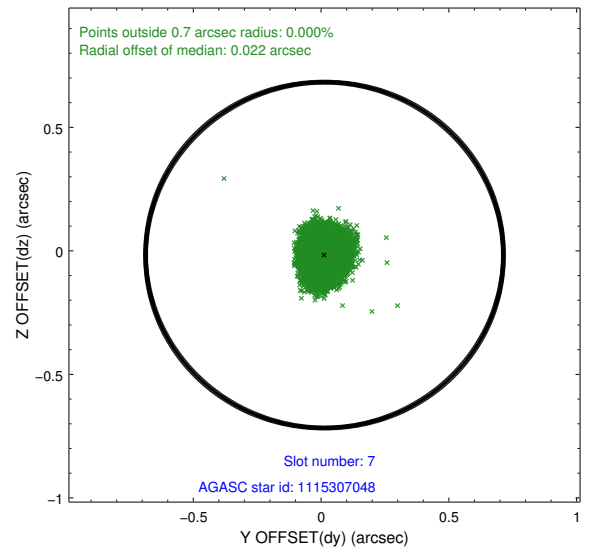
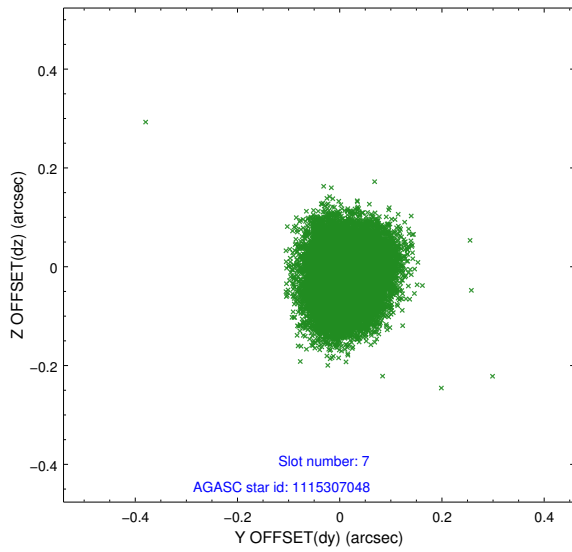
2.4.3 Slot 5



2.4.4 Slot 6

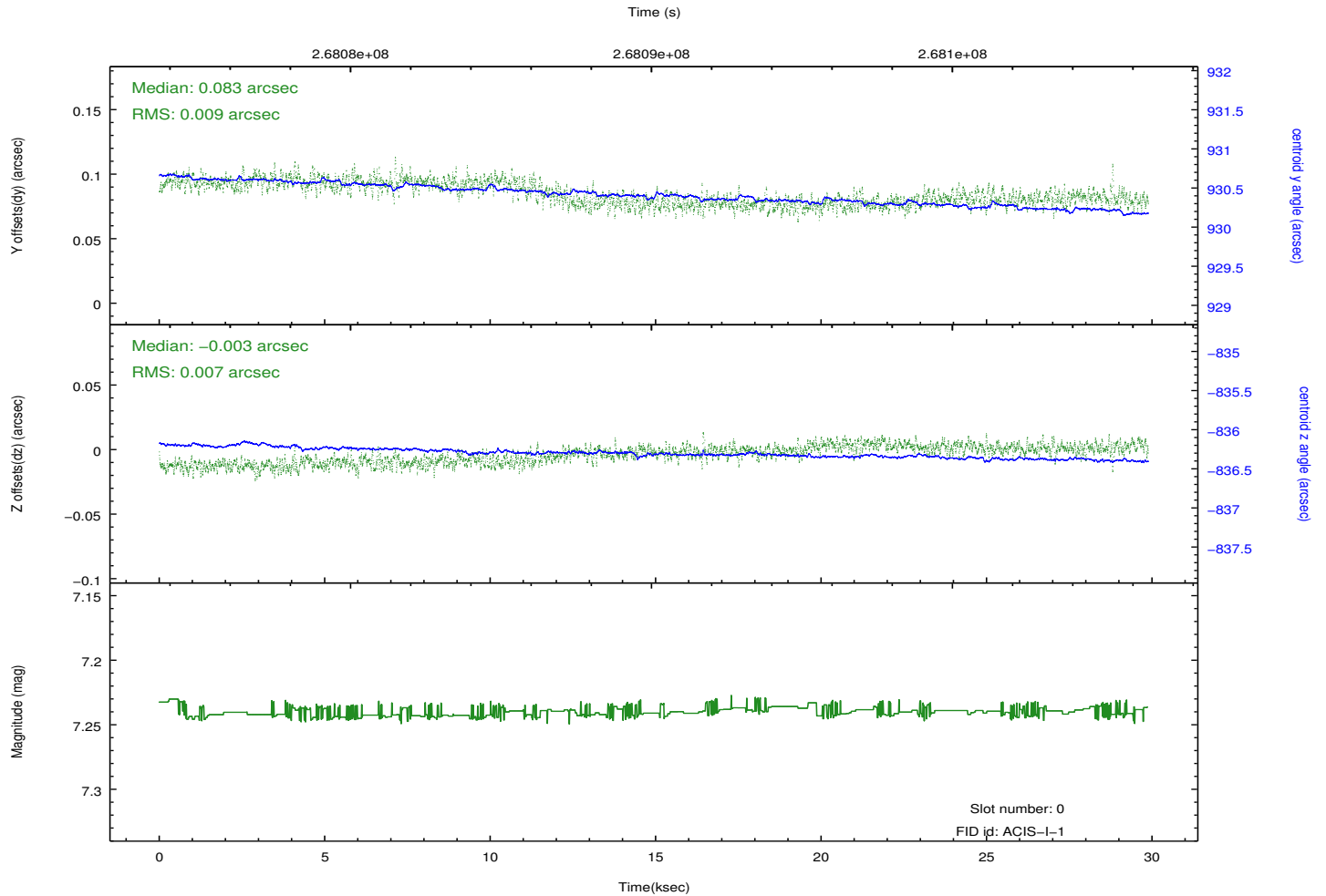
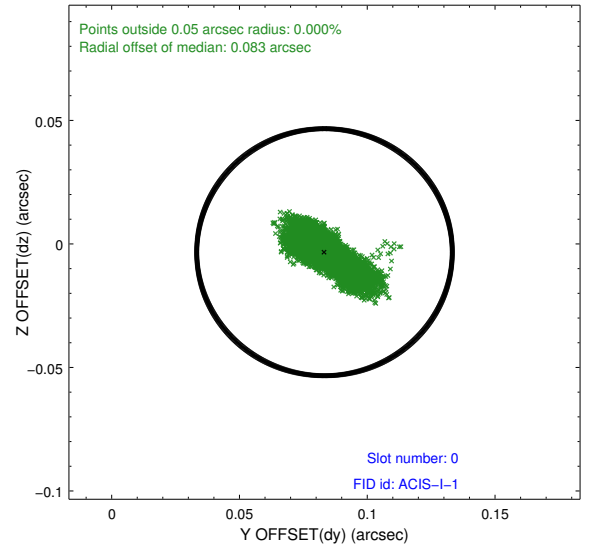
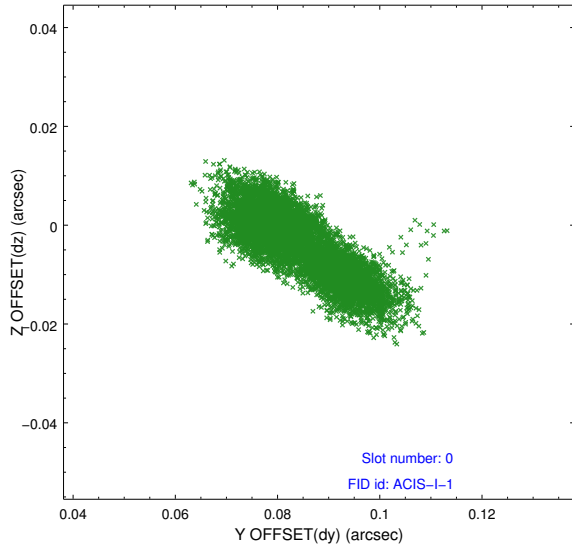


2.4.5 Slot 7

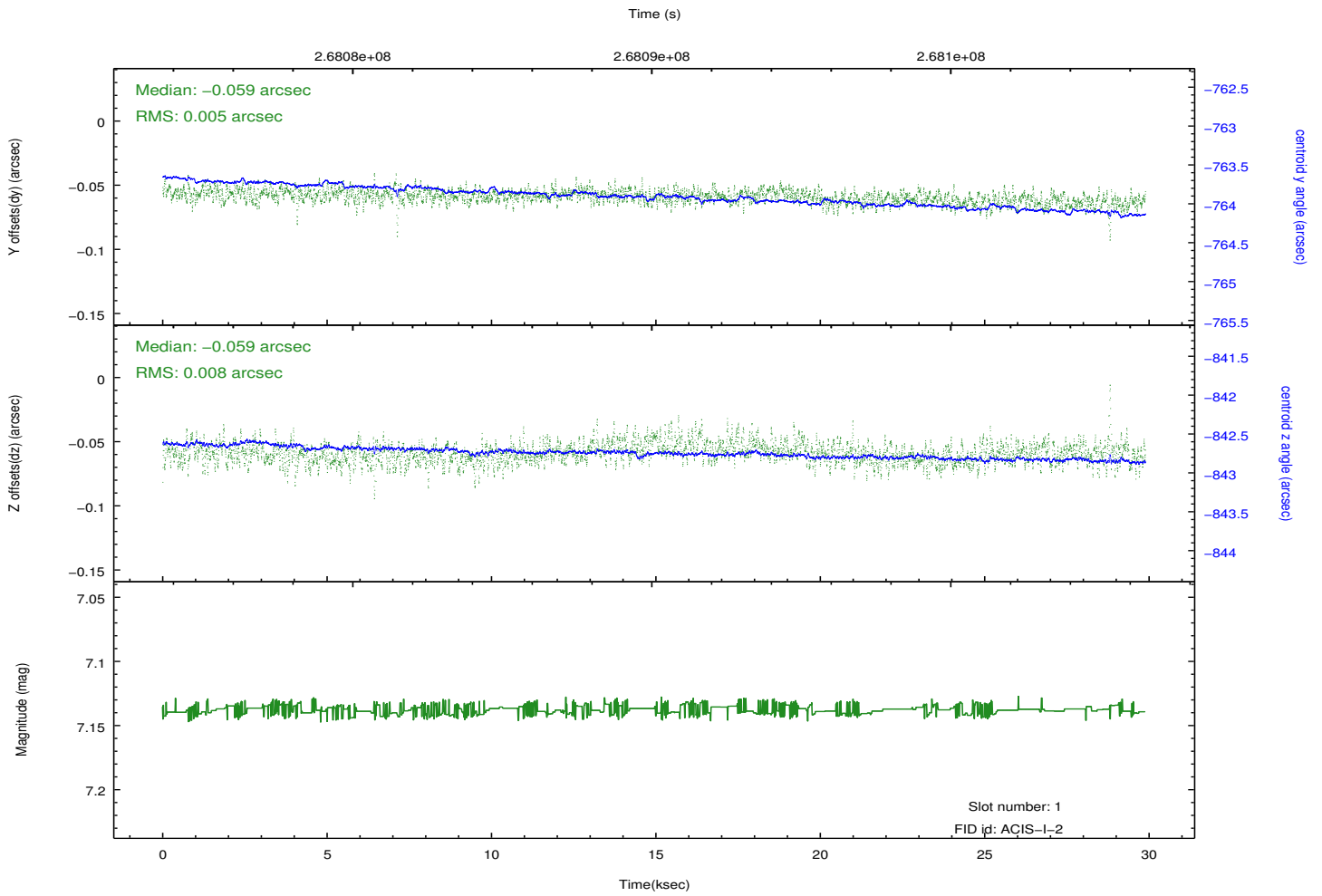
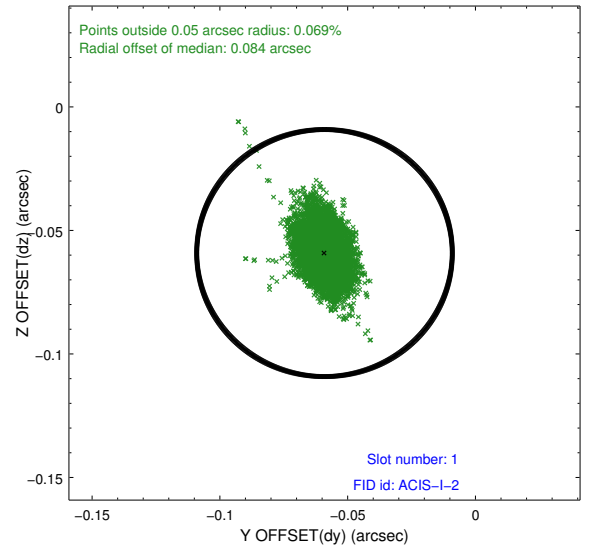
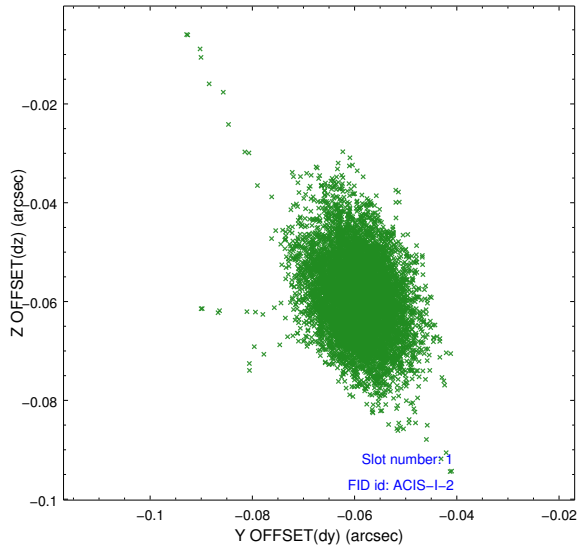


2.5 FID Slots

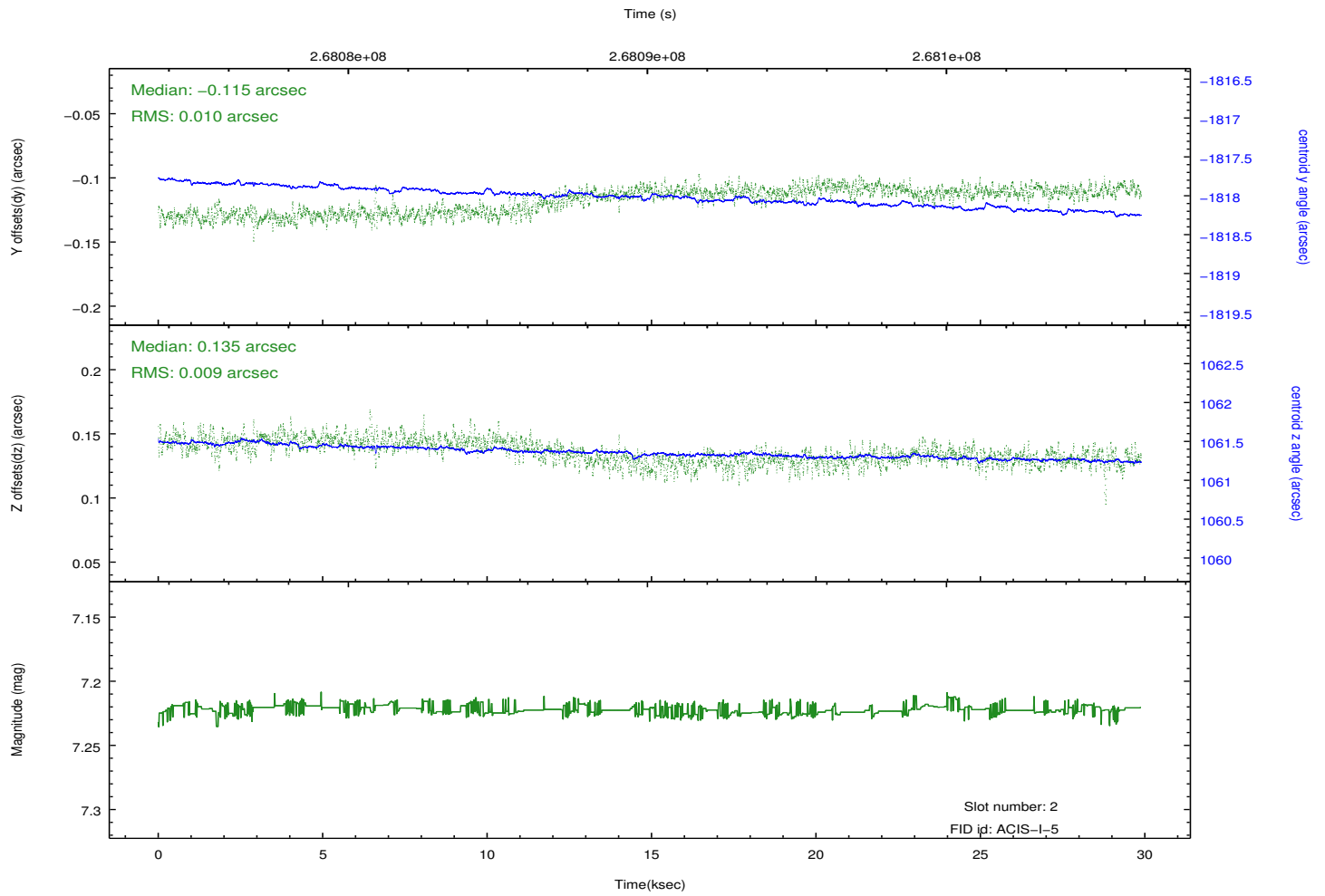
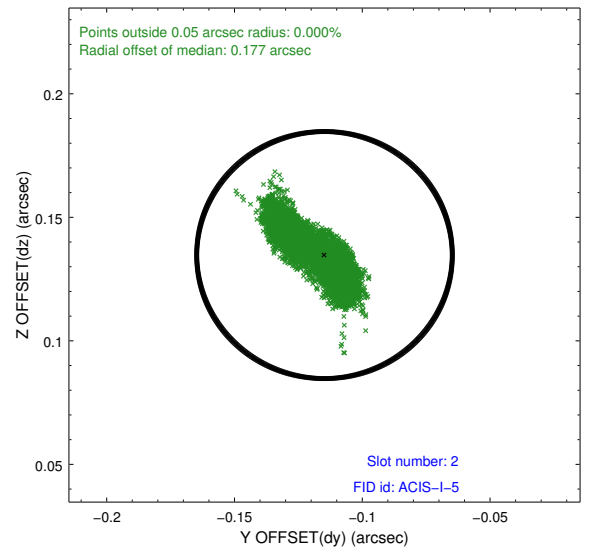
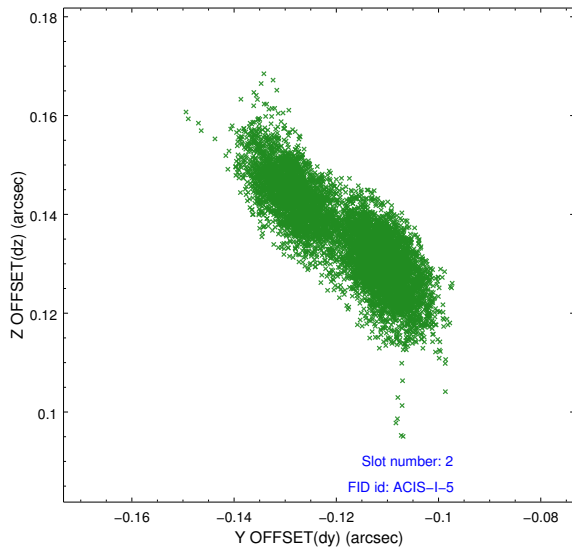
2.5.1 Slot 0



2.5.2 Slot 1



2.5.3 Slot 2



A Summary

A.1 Status

V&V Scientist	Jen Lauer
V&V Date (YYYY-MM-DD)	2012.04.05
V&V Edition	1
V&V Disposition and Status	OK
V&V Charge Time	29.4685179

A.2 Comments