

V&V Reference Report

L2 ASCDS Version : 8.4.3

Observation 7290 - L2 Version 2
Chandra X-Ray Center

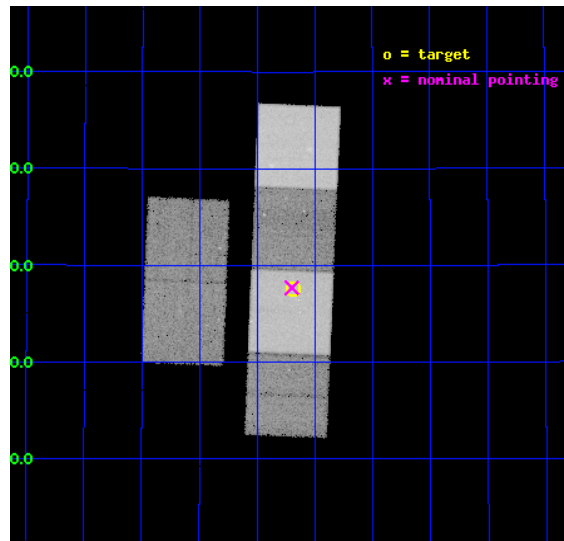
L2 Processing Date : Mar 27 2012

Contents

1	Front	2
2	OBI	3
2.1	OBI	3
2.1.1	Images	3
2.1.2	Bias	3
2.1.3	Parameters	4
2.1.4	Events	4
2.2	Compared Parameters	5
2.3	Aspect	6
2.4	Star Slots	9
2.4.1	Slot 3	9
2.4.2	Slot 4	10
2.4.3	Slot 5	11
2.4.4	Slot 6	12
2.4.5	Slot 7	13
2.5	FID Slots	14
2.5.1	Slot 0	14
2.5.2	Slot 1	15
2.5.3	Slot 2	16
A	Summary	17
A.1	Status	17
A.2	Comments	17

1 Front

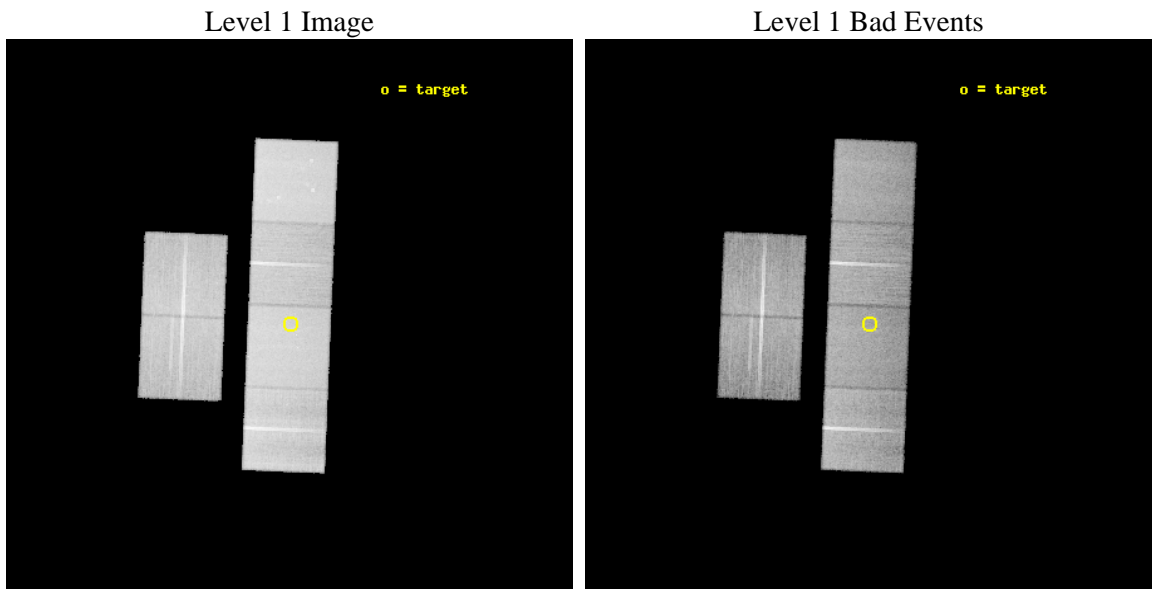
seq_num	300152	Sequence number
obs_id	7290	Observation id
title	A Uniform Study of Globular Cluster X-ray Sources: the Keys to Cluster Dynamical Evolution	Proposal title
observer	Prof. Walter Lewin	Principal investigator
object	NGC 6205	Source name
dtcycle	0	
cycle	P	events from which exps? Prim/Second/Both
ra_targ	250.422917	Observer's specified target RA [deg]
dec_targ	36.460278	Observer's specified target Dec [deg]
ra_nom	250.42491429053	Nominal RA [deg]
dec_nom	36.46157522492	Nominal Dec [deg]
roll_nom	92.375448081163	Nominal Roll [deg]
revision	2	Processing version of data
ontime	28251.469694644	Sum of GTIs [s]
livetime	27893.732574378	Livetime [s]
ontime2	28248.269764364	Sum of GTIs [s]
ontime3	28248.105604321	Sum of GTIs [s]
ontime5	28251.428654641	Sum of GTIs [s]
ontime6	28248.146644354	Sum of GTIs [s]
ontime7	28251.469694644	Sum of GTIs [s]
ontime8	28251.305534661	Sum of GTIs [s]
l2events	394268	Number of level 2 events



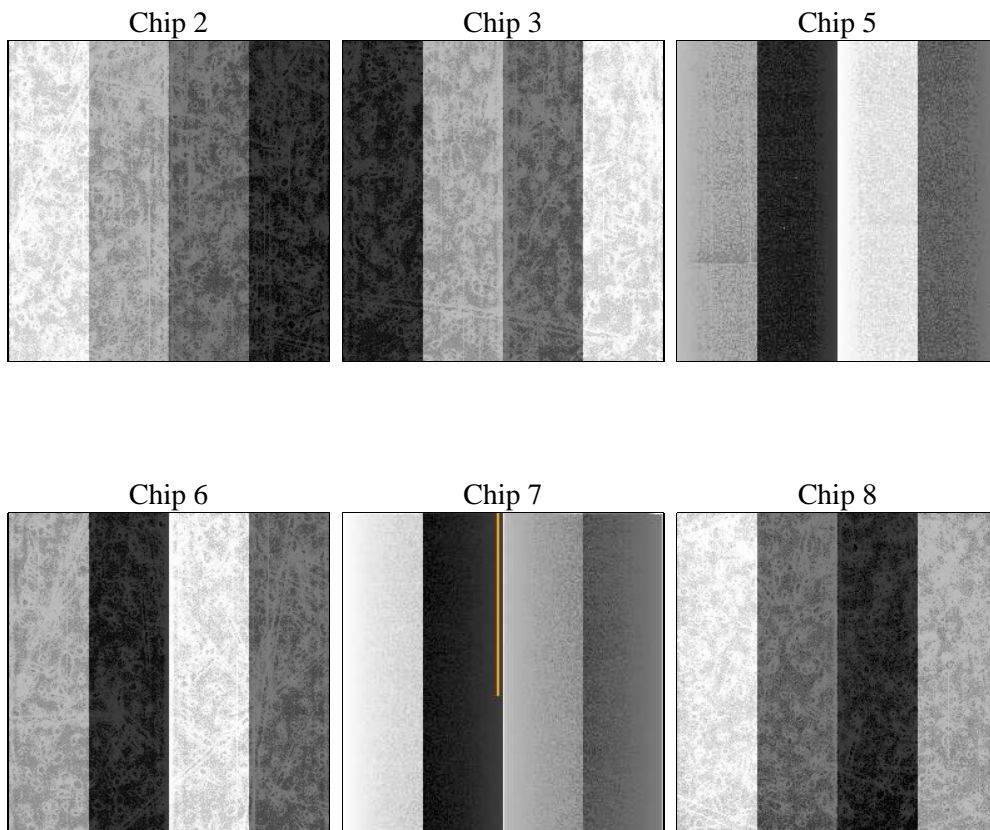
2 OBI

2.1 OBI

2.1.1 Images



2.1.2 Bias



2.1.3 Parameters

obi_num	0	Obi number	sched_exp_time	28300.000000	[s] Scheduled observation exposure time
ascdsver	8.4.3.1	Processing system revision	ontime	28251.469694644	Sum of GTIs [s]
caldbver	4.4.8	 	ontime2	28248.269764364	Sum of GTIs [s]
date	2012-03-27T06:05:40	Date and time of file creation	ontime3	28248.105604321	Sum of GTIs [s]
revision	2	Processing version of data	ontime5	28251.428654641	Sum of GTIs [s]
			ontime6	28248.146644354	Sum of GTIs [s]
			ontime7	28251.469694644	Sum of GTIs [s]
			ontime8	28251.305534661	Sum of GTIs [s]
			l1events	1735529	Number of level 1 events

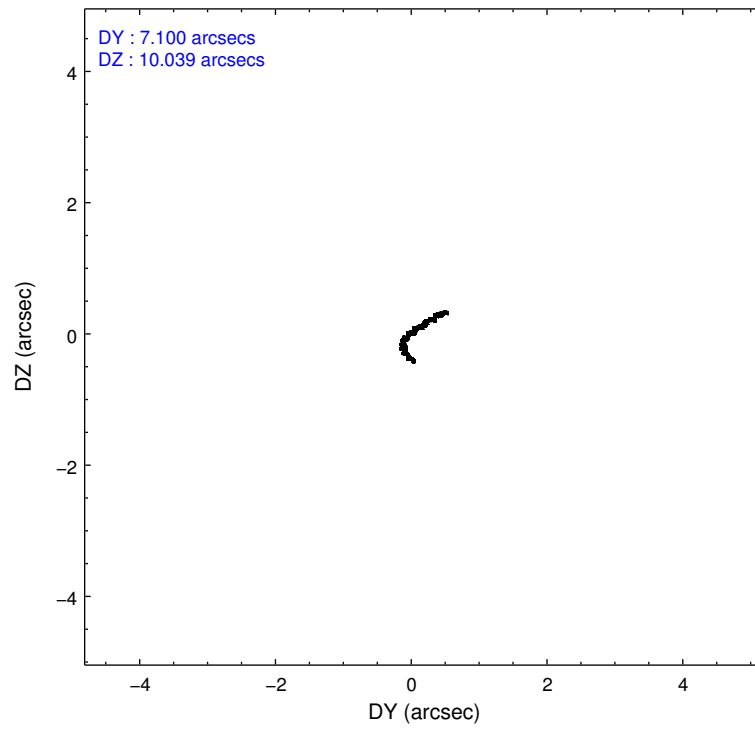
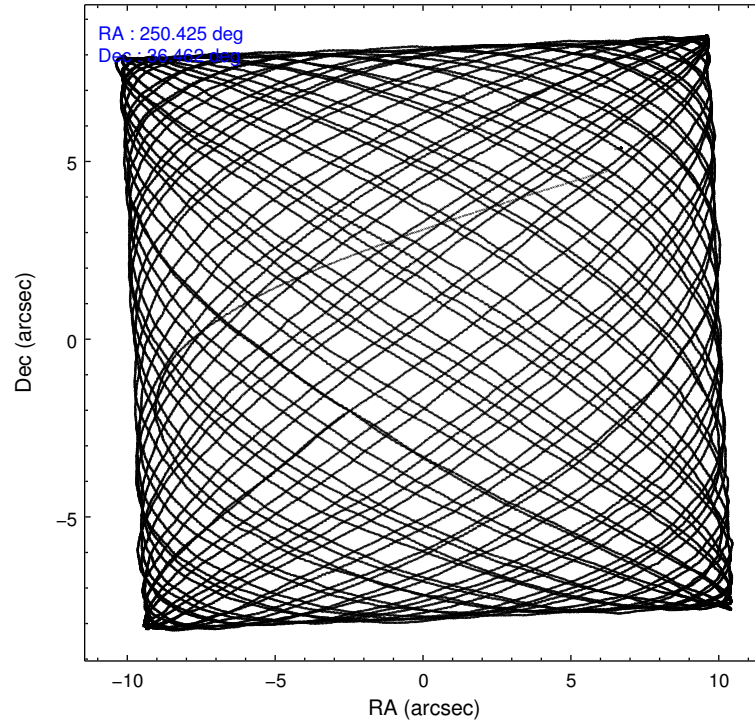
2.1.4 Events

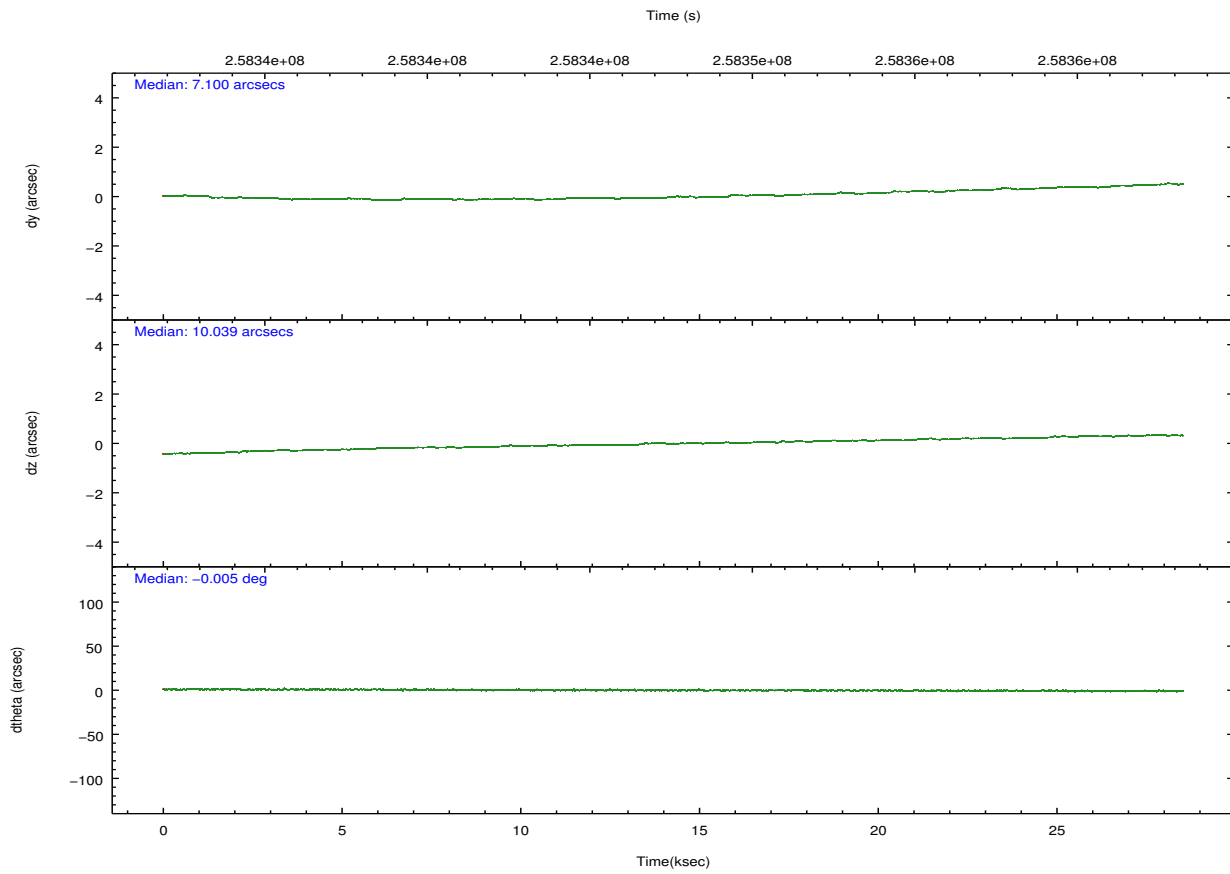
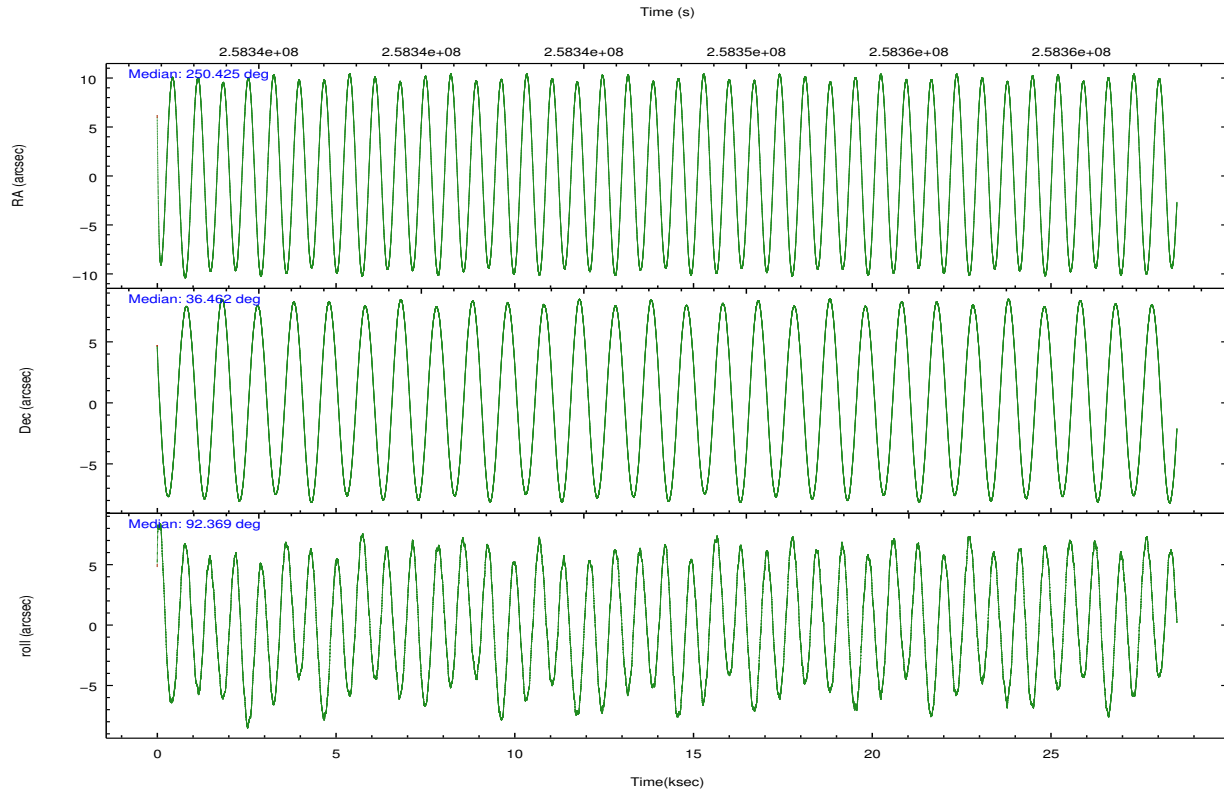
	ccd 2	ccd 3	ccd 5	ccd 6	ccd 7	ccd 8		ccd 2	ccd 3	ccd 5	ccd 6	ccd 7	ccd 8
level 1 events	252628	230146	365458	247502	331718	308077	grade 0 events	12463	12108	12269	11138	12213	21204
rejected events	224275	202380	200682	219071	194541	240276		4%	5%	3%	4%	3%	6%
rejected %	88%	87%	54%	88%	58%	77%	grade 1 events	151	155	473	106	304	226
								0%	0%	0%	0%	0%	0%
							grade 2 events	6022	5460	49852	5969	27227	14910
								2%	2%	13%	2%	8%	4%
							grade 3 events	2643	2670	6406	2728	11780	7298
								1%	1%	1%	1%	3%	2%
							grade 4 events	2558	2656	6365	2707	11549	6732
								1%	1%	1%	1%	3%	2%
							grade 5 events	9630	10860	26995	11473	31075	14593
								3%	4%	7%	4%	9%	4%
							grade 6 events	4669	4874	89907	5891	74423	17689
								1%	2%	24%	2%	22%	5%
							grade 7 events	214492	191363	173191	207490	163147	225425
								84%	83%	47%	83%	49%	73%

2.2 Compared Parameters

Parameter	Planned	Actual	Parameter	Planned	Actual
Instrument	ACIS	ACIS	Obspar format version number	7	7
Detector	ACIS-235678	ACIS-235678	Obspar file type	PREDICTED	ACTUAL
Grating	NONE	NONE	Obspar update status	NONE	UPDATED
Data mode	FAINT	FAINT	Number of optional ACIS chips dropped	0	0
Observation mode	POINTING	POINTING	On-chip summing requested	N	N
[deg] Pointing RA	250.443444	250.4249142905278	Subarray requested	NONE	NONE
[deg] Pointing Dec	36.438787	36.46157522492005	Alternating exposures requested	N	N
[deg] Pointing Roll	92.207811	92.37544808116343	[s] Primary exposure time	0.000000	3.2
[mm] SIM focus pos	-0.684267	-0.6828225247311905			
[mm] SIM defocus	0	0.001444936568705701			
[mm] SIM translation stage pos	-190.132523	-190.1425803651734			
[mm] SIM translation stage offset	0	0.01005778216563158			
[s] Observation start time (MET)	258333519.184000	258332538.63845			
Observation start date	2006-03-09T23:17:34	2006-03-09T23:02:18			
[s] Observation end time (MET)	258361819.184000	258362593.68985			
Observation end date	2006-03-10T07:09:14	2006-03-10T07:23:13			
Read mode	TIMED	TIMED			

2.3 Aspect



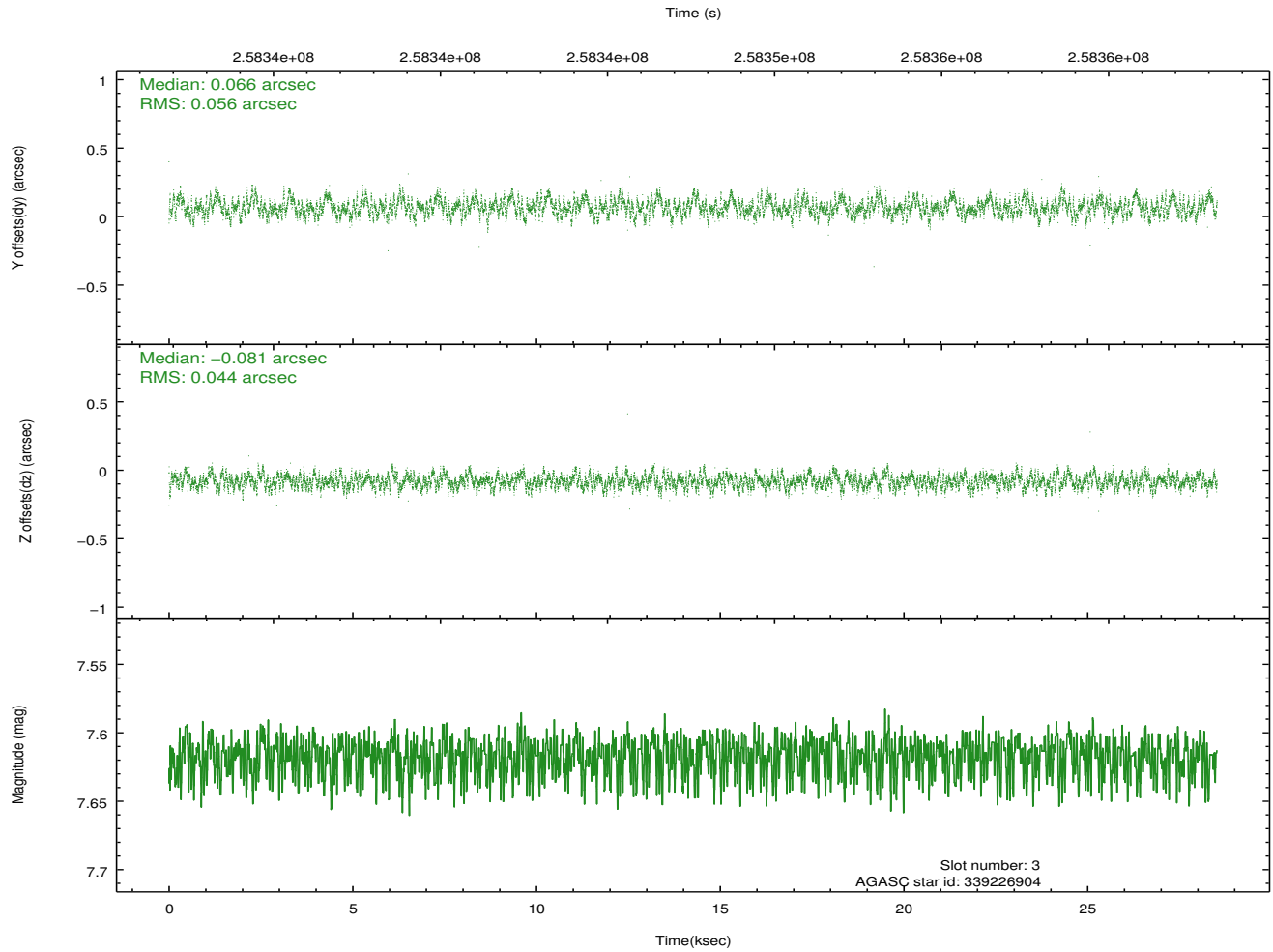
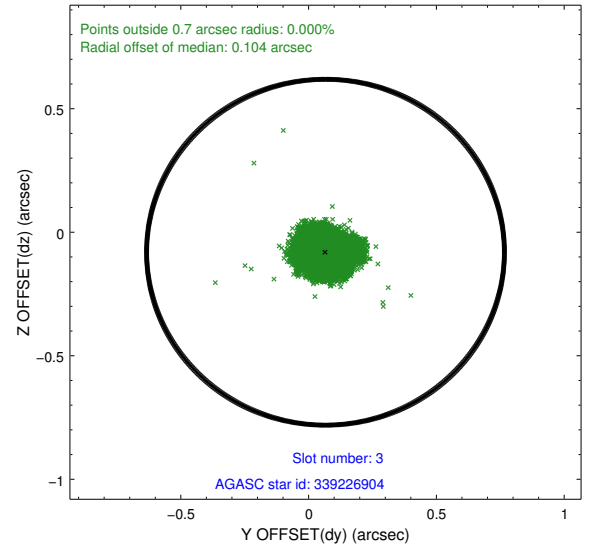
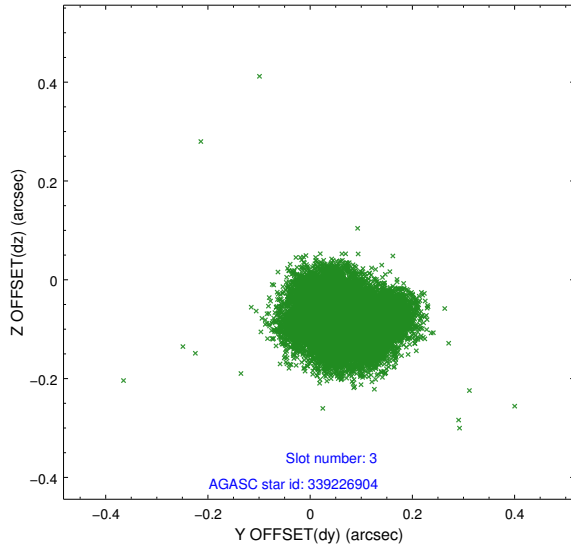


Slot Statistics

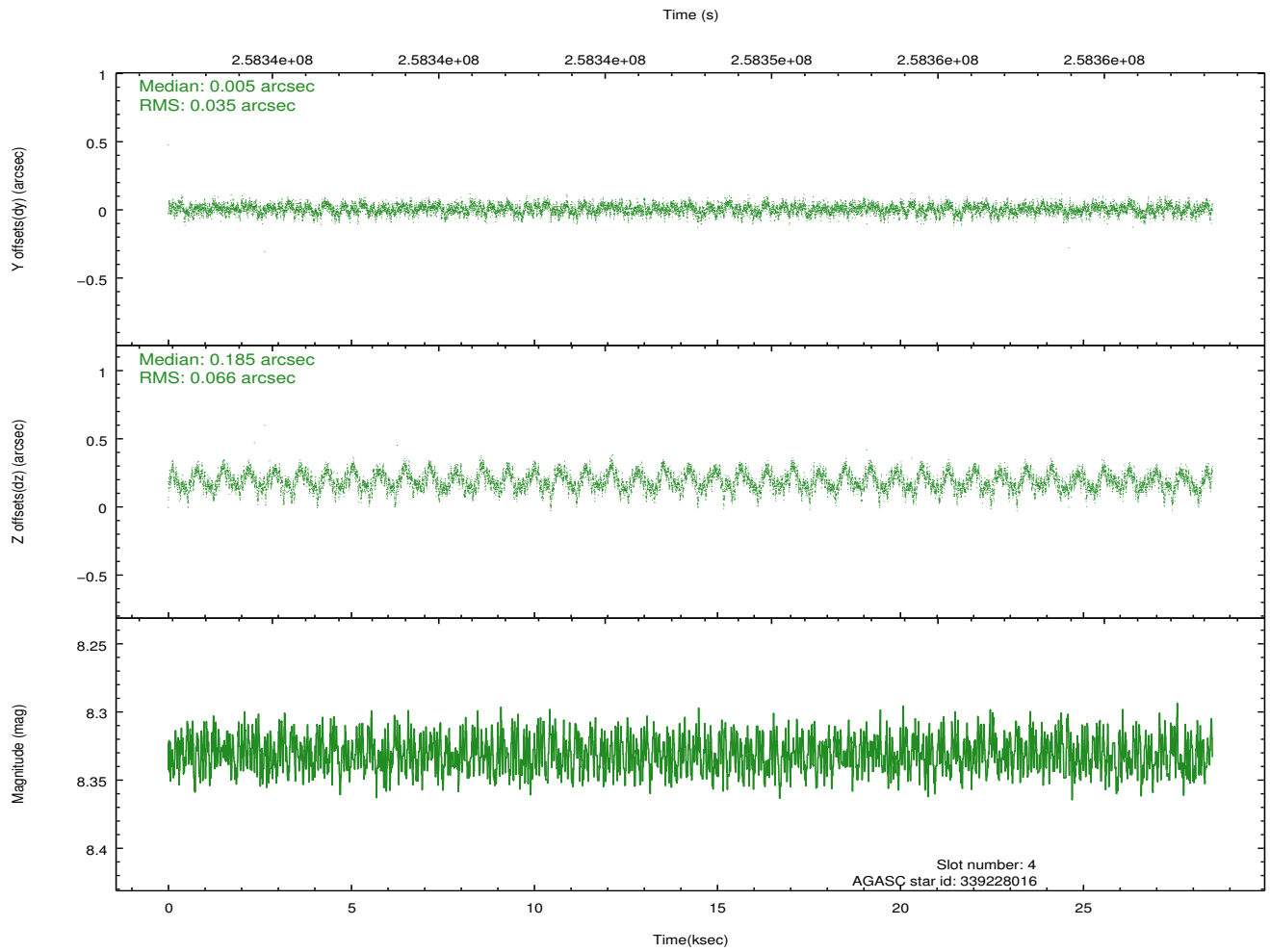
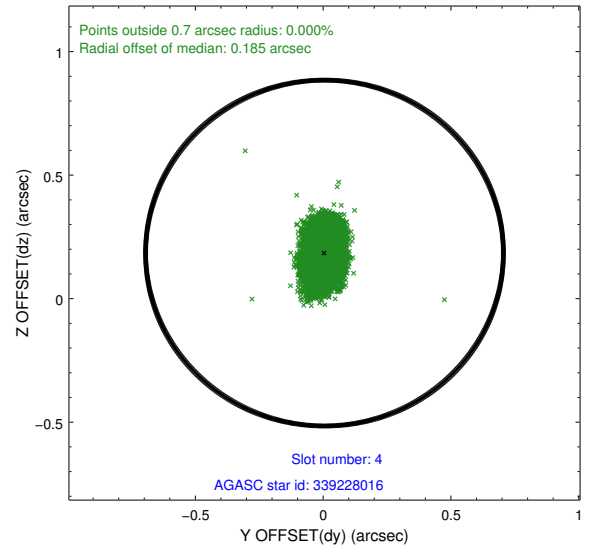
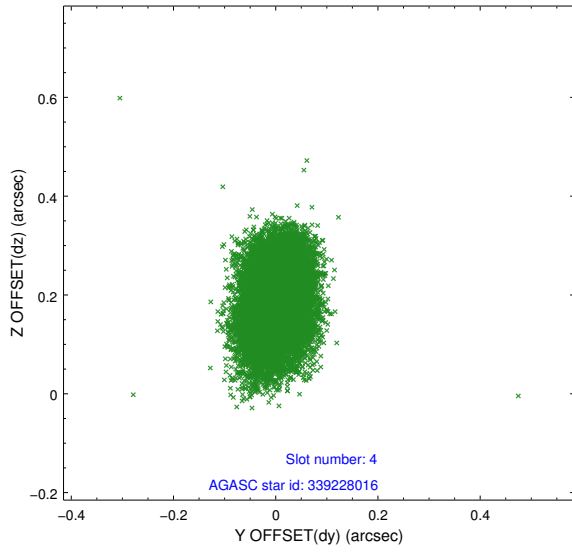
slot	status	id	mag	n_pts	med_dy	med_dz	dr1	dr2	ra	dec	mean_y	mean_z
0	FID	ACIS-S-2	7.10	6959	-0.053	-0.027	0.007	0.012	0.000000	0.000000	-759.95	-1731.26
1	FID	ACIS-S-4	7.21	6957	0.104	0.033	0.007	0.015	0.000000	0.000000	2153.41	177.25
2	FID	ACIS-S-5	7.23	6958	-0.082	0.003	0.009	0.017	0.000000	0.000000	-1812.75	170.91
3	GUIDE	339226904	7.62	13914	0.066	-0.081	0.077	0.117	250.269095	36.201198	-834.64	538.82
4	GUIDE	339228016	8.33	13908	0.005	0.185	0.079	0.131	251.133850	36.257012	-723.62	-1977.51
5	GUIDE	339229464	8.99	13912	-0.042	-0.059	0.072	0.116	250.097731	37.037640	2194.67	909.66
6	GUIDE	339231568	8.35	13911	-0.159	0.146	0.075	0.122	250.815273	37.051074	2164.07	-1151.93
7	GUIDE	339223144	8.20	13913	0.124	-0.193	0.068	0.113	249.656598	35.892589	-1866.90	2368.35

2.4 Star Slots

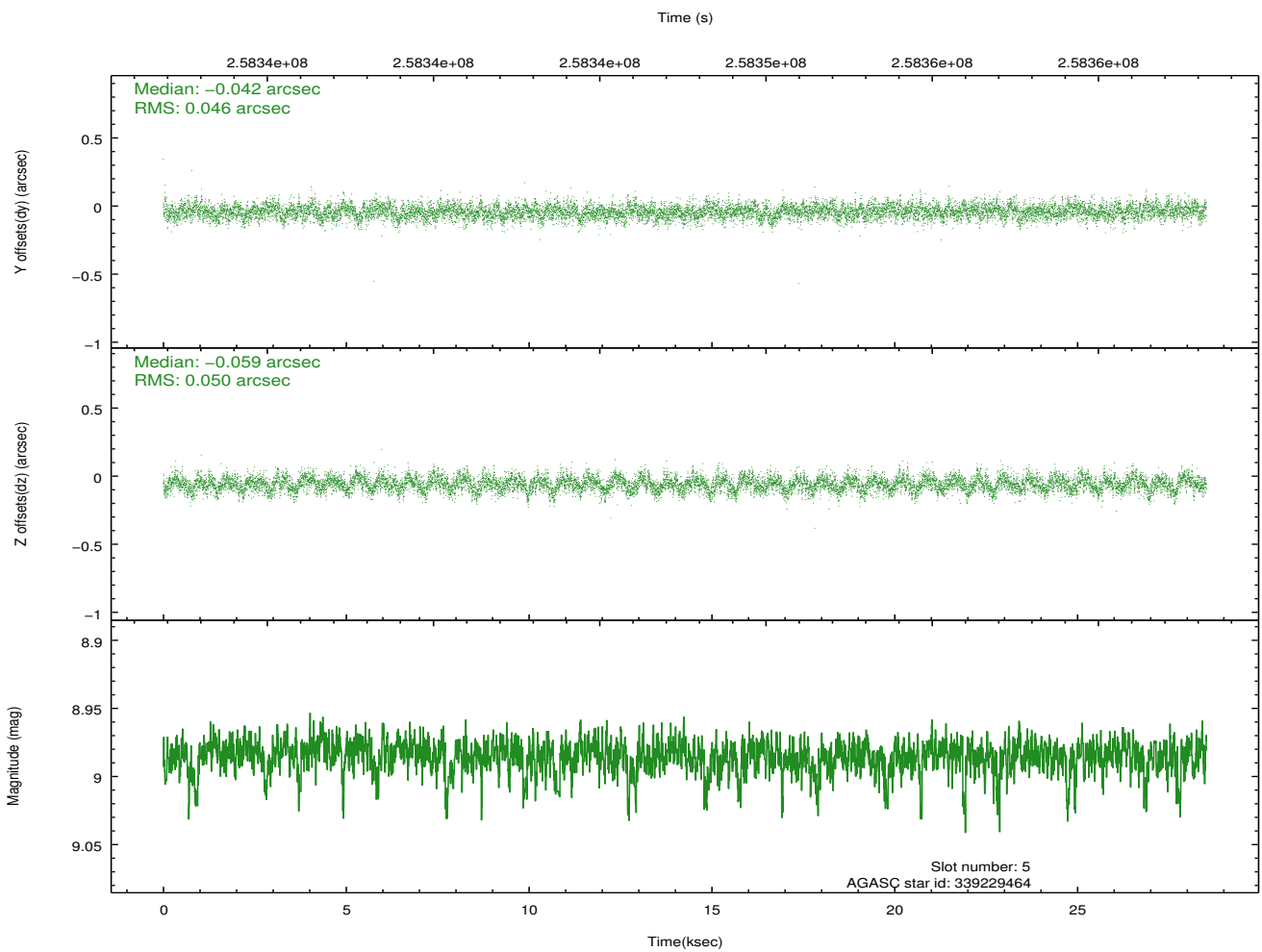
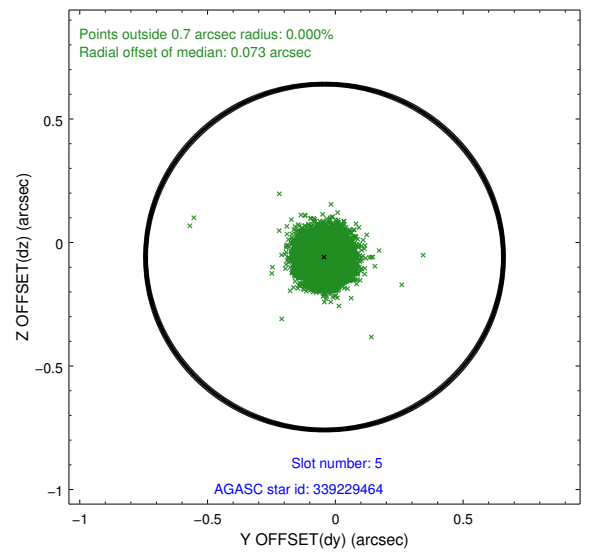
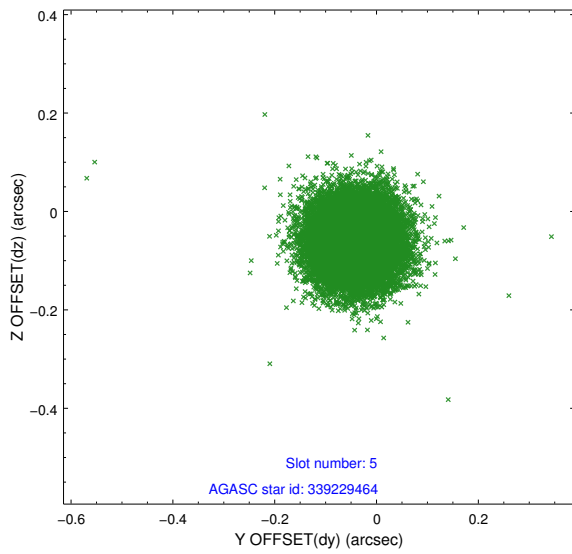
2.4.1 Slot 3



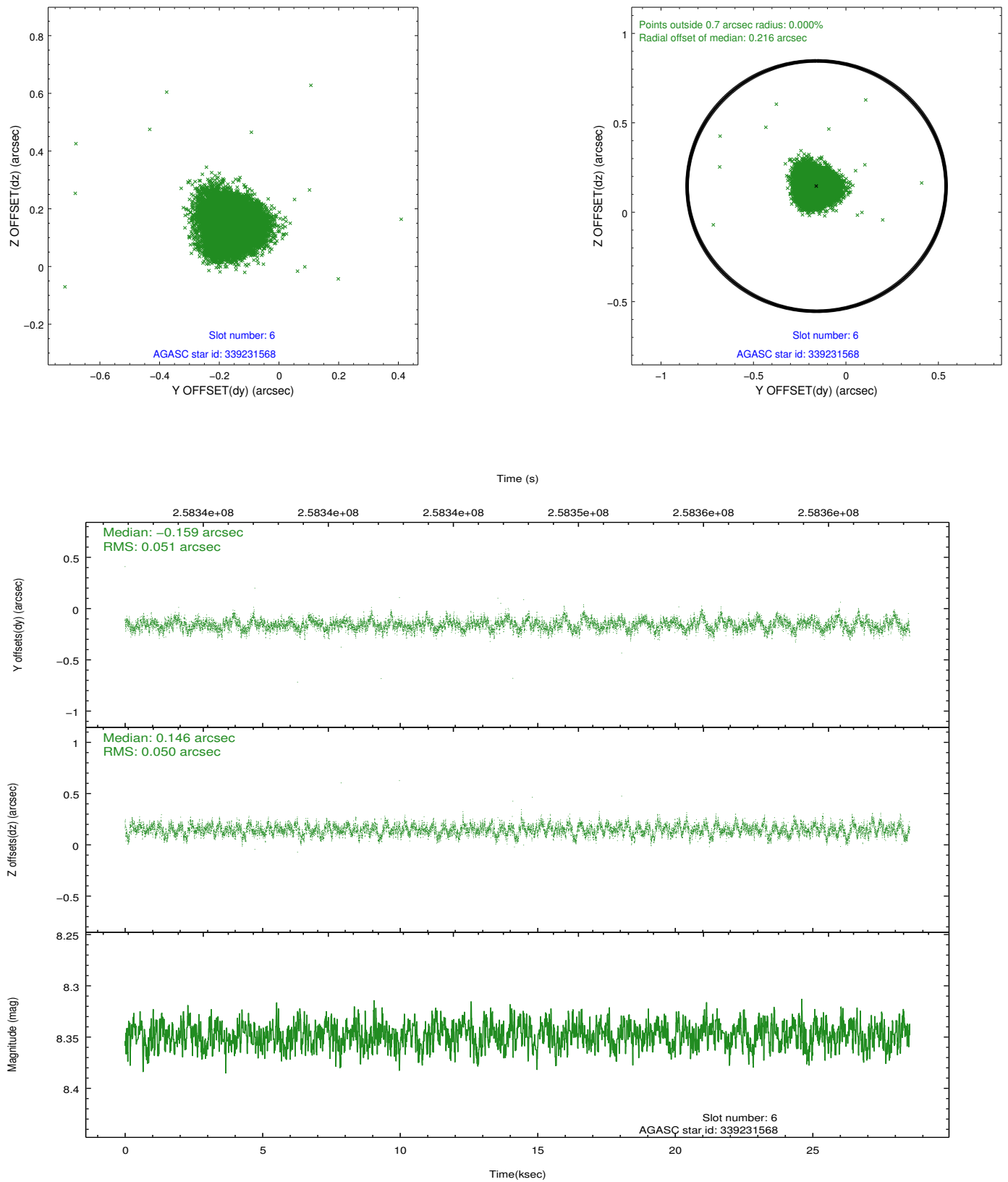
2.4.2 Slot 4



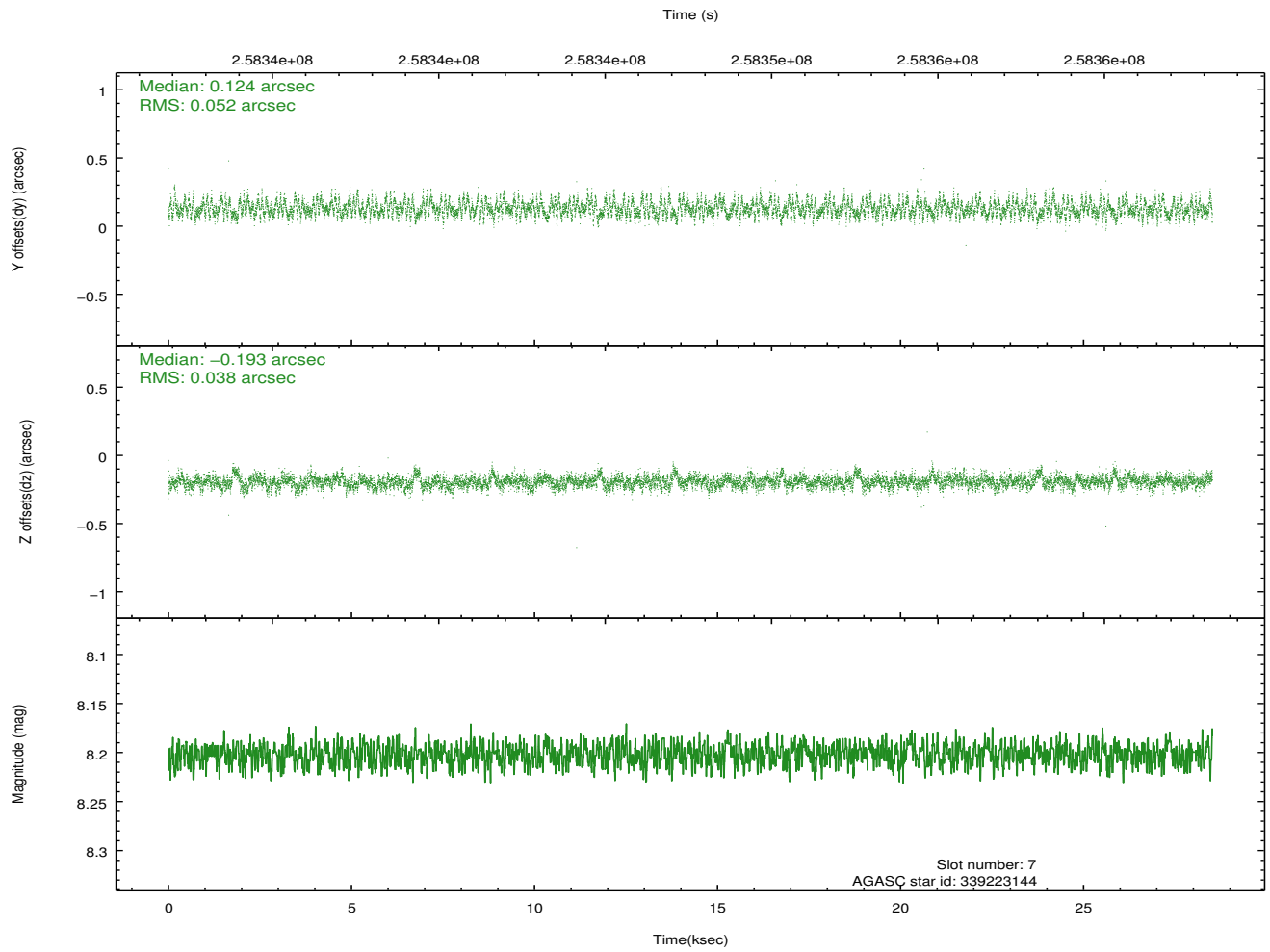
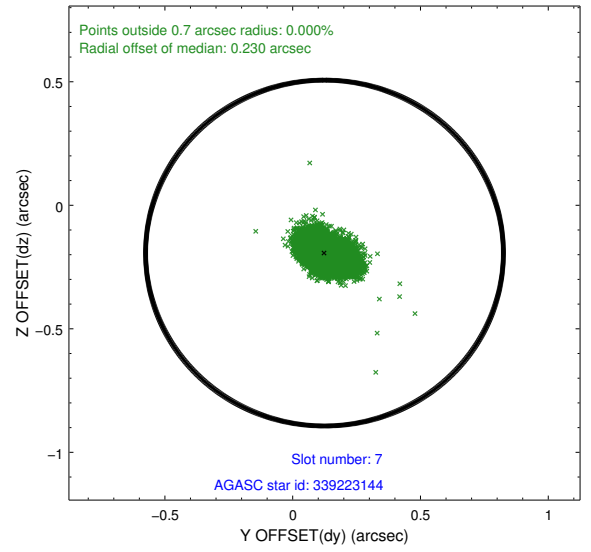
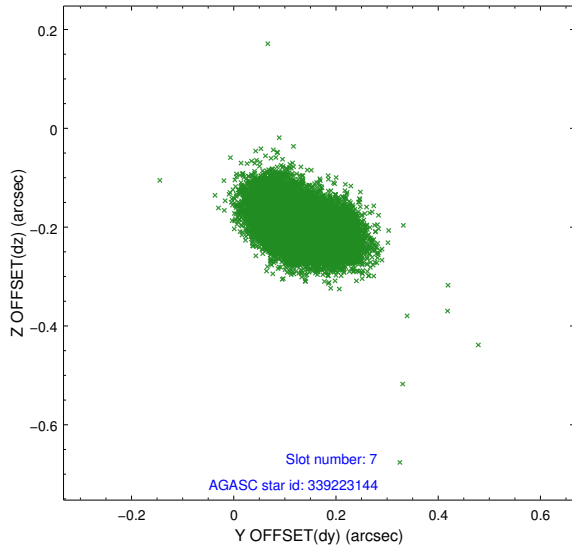
2.4.3 Slot 5



2.4.4 Slot 6

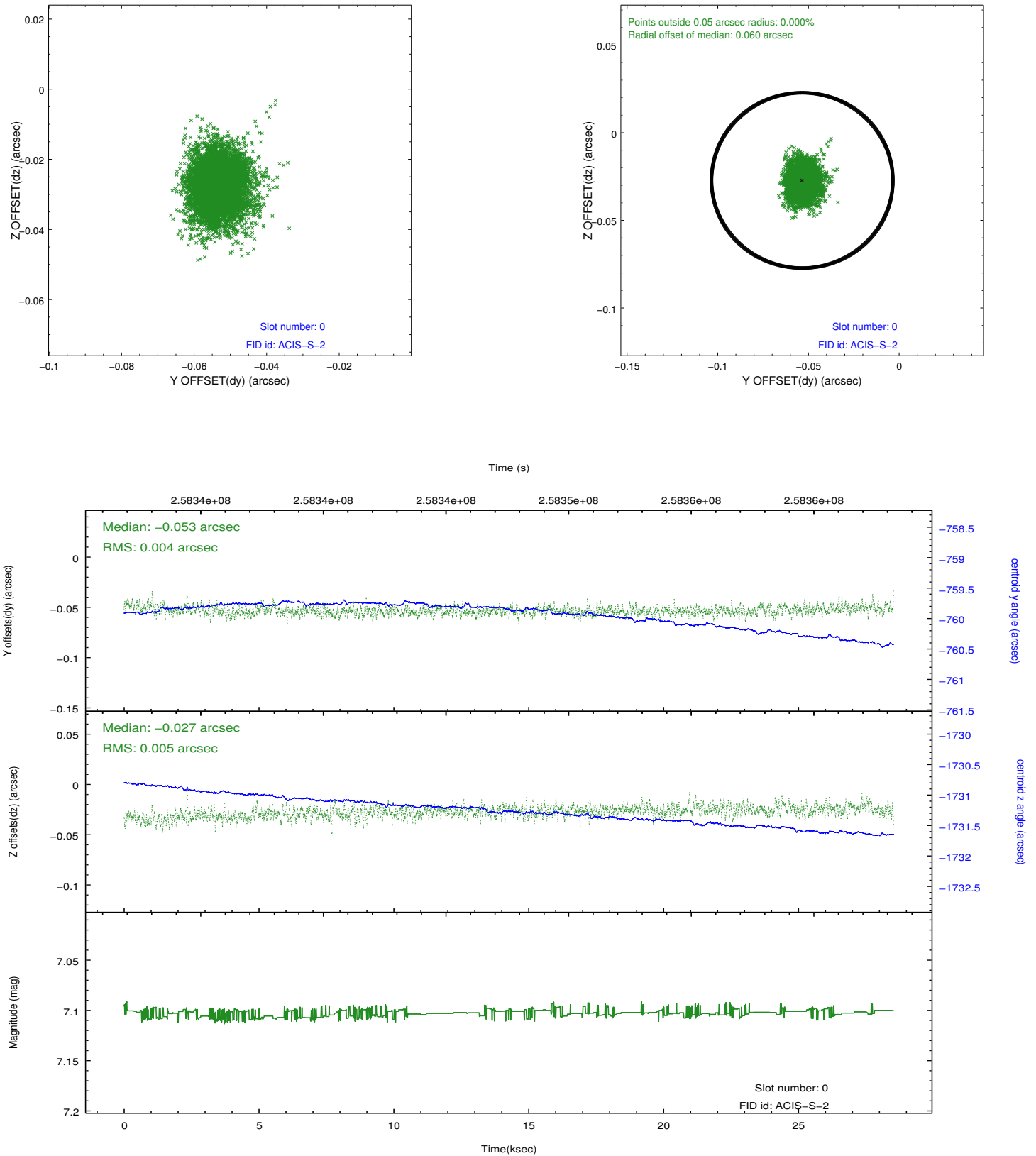


2.4.5 Slot 7

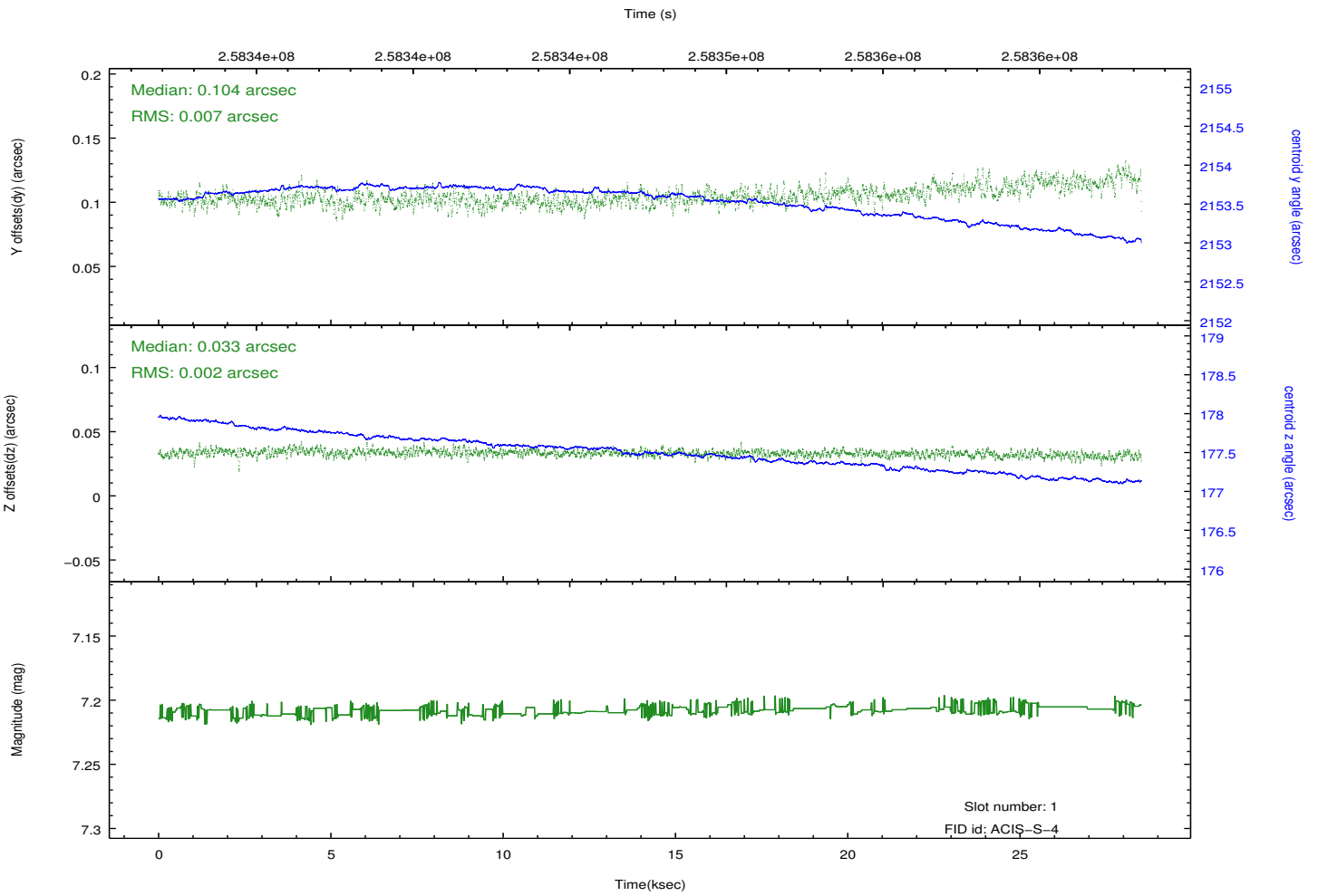
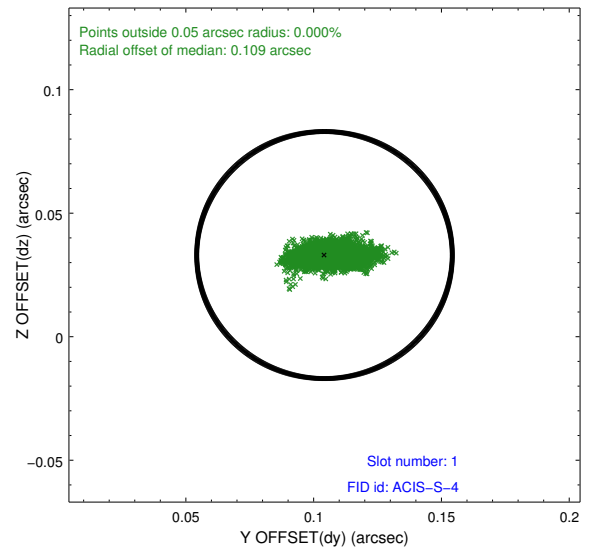
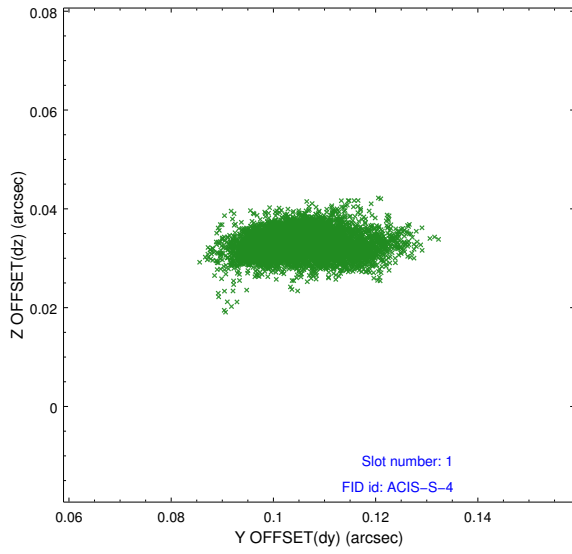


2.5 FID Slots

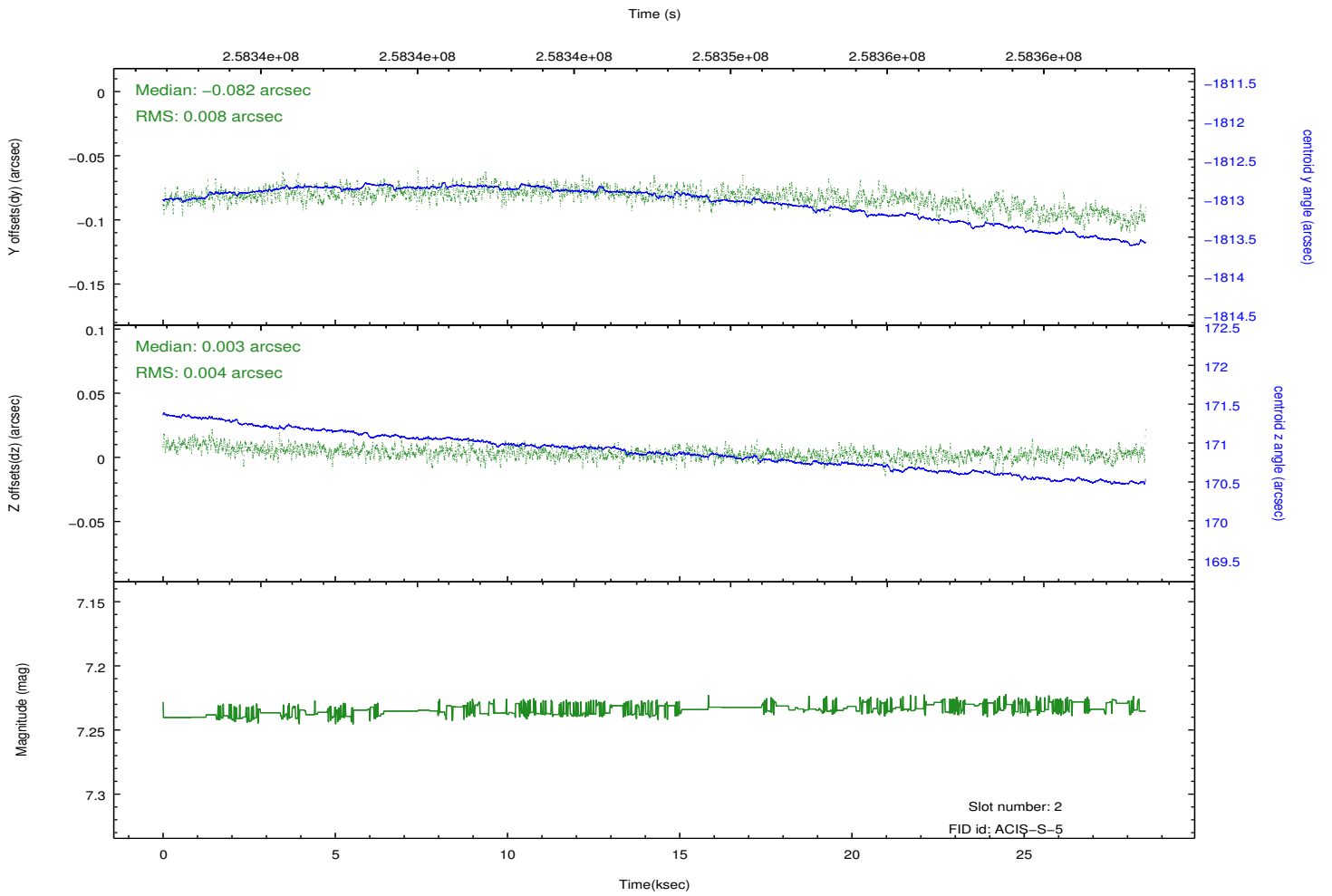
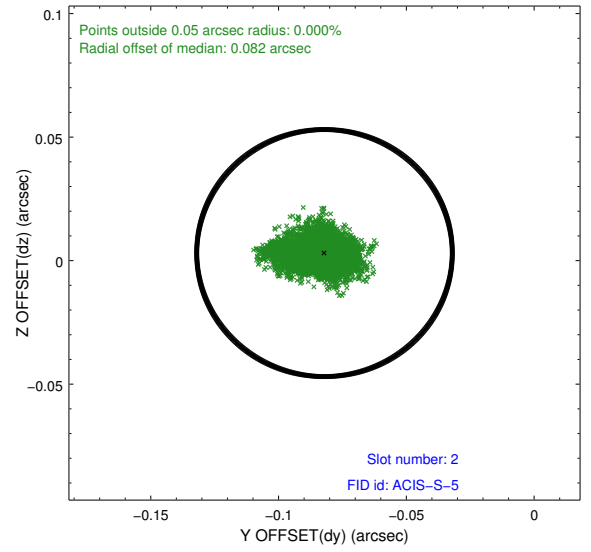
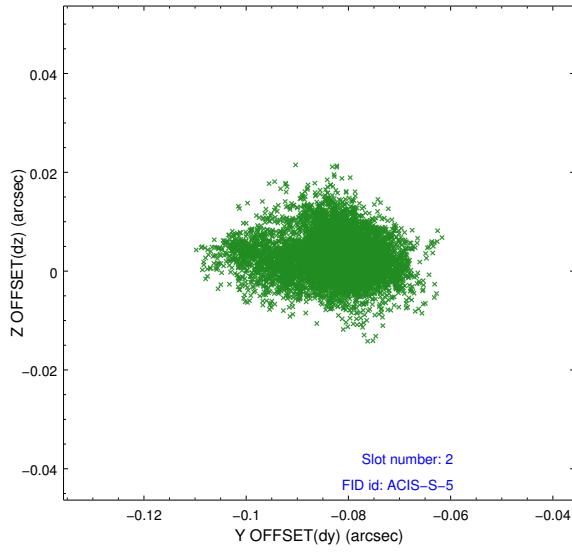
2.5.1 Slot 0



2.5.2 Slot 1



2.5.3 Slot 2



A Summary

A.1 Status

V&V Scientist	Jen Lauer
V&V Date (YYYY-MM-DD)	2012.03.28
V&V Edition	1
V&V Disposition and Status	OK
V&V Charge Time	28.2527998

A.2 Comments

Joint Proposal: HST