

V&V Reference Report

L2 ASCDS Version : 8.4.4

Observation 7570 - L2 Version 2
Chandra X-Ray Center

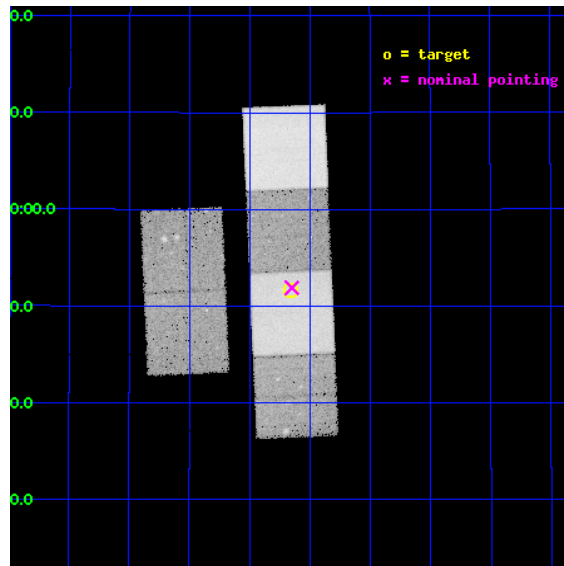
L2 Processing Date : May 5 2012

Contents

1	Front	2
2	OBI	3
2.1	OBI	3
2.1.1	Images	3
2.1.2	Bias	3
2.1.3	Parameters	4
2.1.4	Events	4
2.2	Compared Parameters	5
2.3	Aspect	6
2.4	Star Slots	9
2.4.1	Slot 3	9
2.4.2	Slot 4	10
2.4.3	Slot 5	11
2.4.4	Slot 6	12
2.4.5	Slot 7	13
2.5	FID Slots	14
2.5.1	Slot 0	14
2.5.2	Slot 1	15
2.5.3	Slot 2	16
A	Summary	17
A.1	Status	17
A.2	Comments	17

1 Front

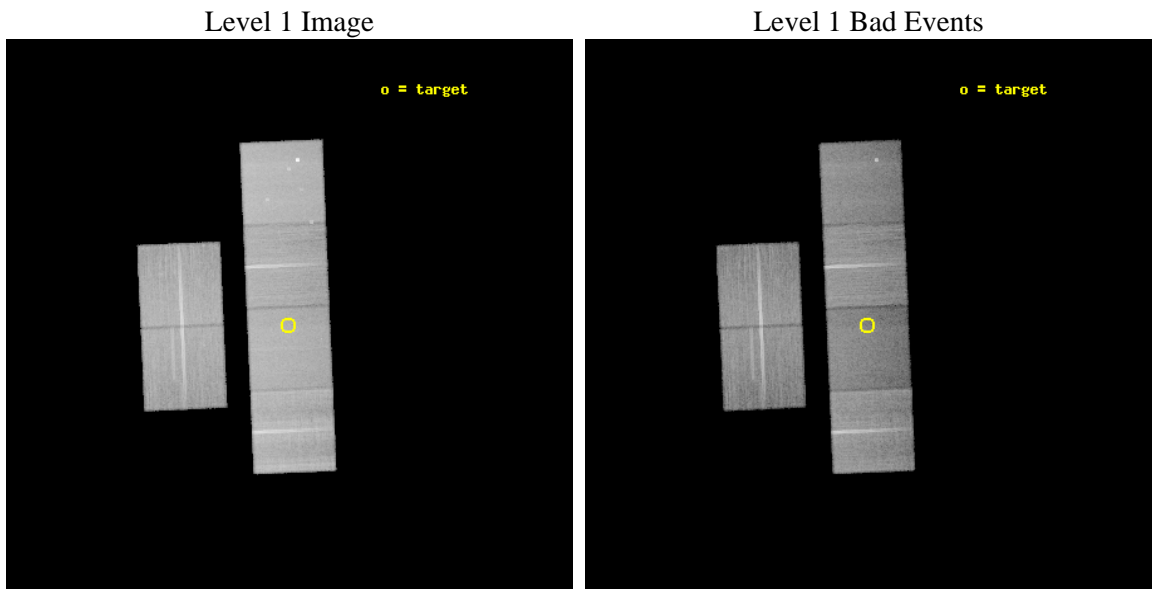
seq_num	500702	Sequence number
obs_id	7570	Observation id
title	A Search for Jet Breaks in Long GRB afterglows	Proposal title
observer	Professor Gordon Garmire	Principal investigator
object	GRB 071020	Source name
dtcycle	0	
cycle	P	events from which exps? Prim/Second/Both
ra_targ	119.665208	Observer's specified target RA [deg]
dec_targ	32.86079	Observer's specified target Dec [deg]
ra_nom	119.66239068733	Nominal RA [deg]
dec_nom	32.865017078328	Nominal Dec [deg]
roll_nom	87.535564912958	Nominal Roll [deg]
revision	2	Processing version of data
ontime	33042.918988705	Sum of GTIs [s]
liveltime	32624.509652413	Livetime [s]
ontime2	33036.478018105	Sum of GTIs [s]
ontime3	33042.795868695	Sum of GTIs [s]
ontime5	33042.877948701	Sum of GTIs [s]
ontime6	33042.836908698	Sum of GTIs [s]
ontime7	33042.918988705	Sum of GTIs [s]
ontime8	33042.754828691	Sum of GTIs [s]
l2events	383567	Number of level 2 events



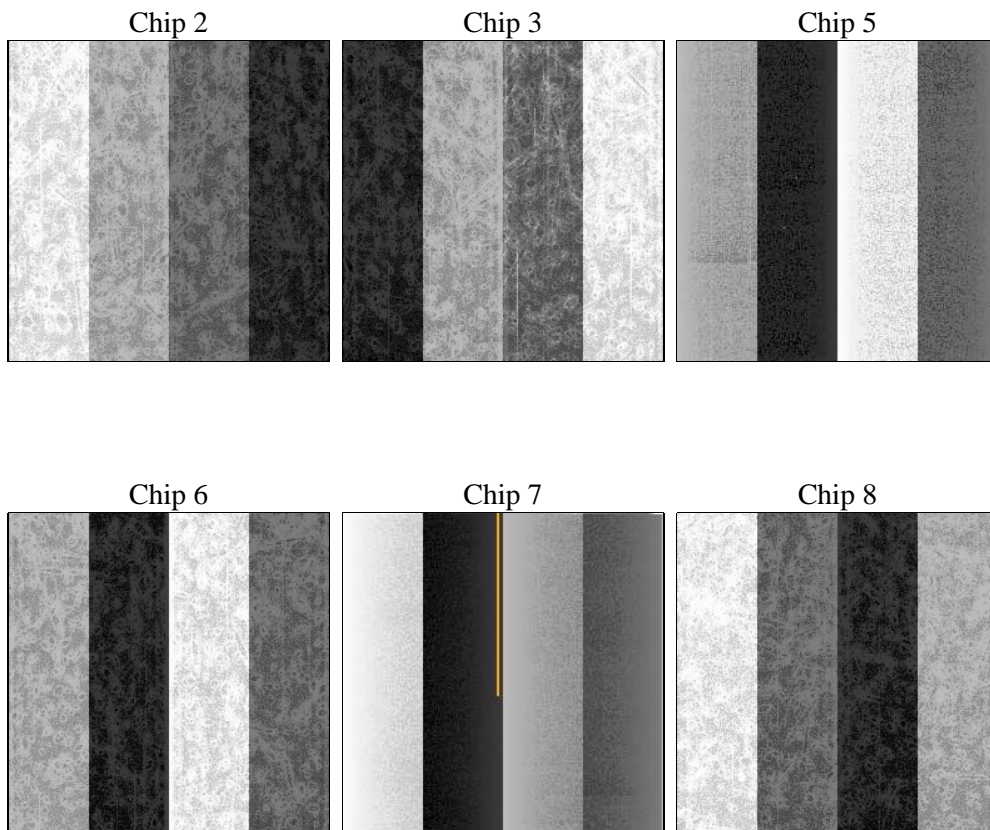
2 OBI

2.1 OBI

2.1.1 Images



2.1.2 Bias



2.1.3 Parameters

obi_num	0	Obi number	sched_exp_time	33000.000000	[s] Scheduled observation exposure time
ascdsver	8.4.4	Processing system revision	ontime	33042.918988705	Sum of GTIs [s]
caldbver	4.4.9	 	ontime2	33036.478018105	Sum of GTIs [s]
date	2012-05-05T05:34:22	Date and time of file creation	ontime3	33042.795868695	Sum of GTIs [s]
revision	2	Processing version of data	ontime5	33042.877948701	Sum of GTIs [s]
			ontime6	33042.836908698	Sum of GTIs [s]
			ontime7	33042.918988705	Sum of GTIs [s]
			ontime8	33042.754828691	Sum of GTIs [s]
			l1events	1755234	Number of level 1 events

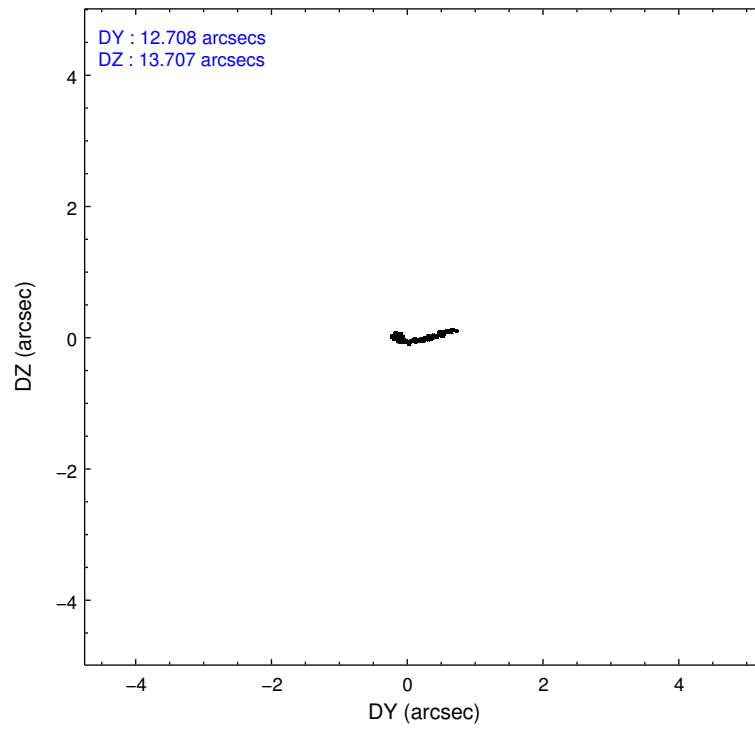
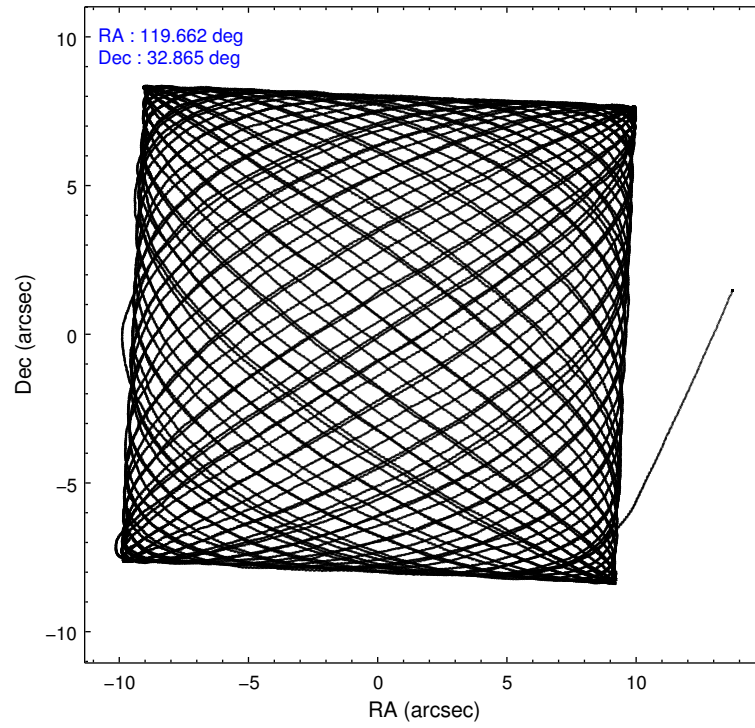
2.1.4 Events

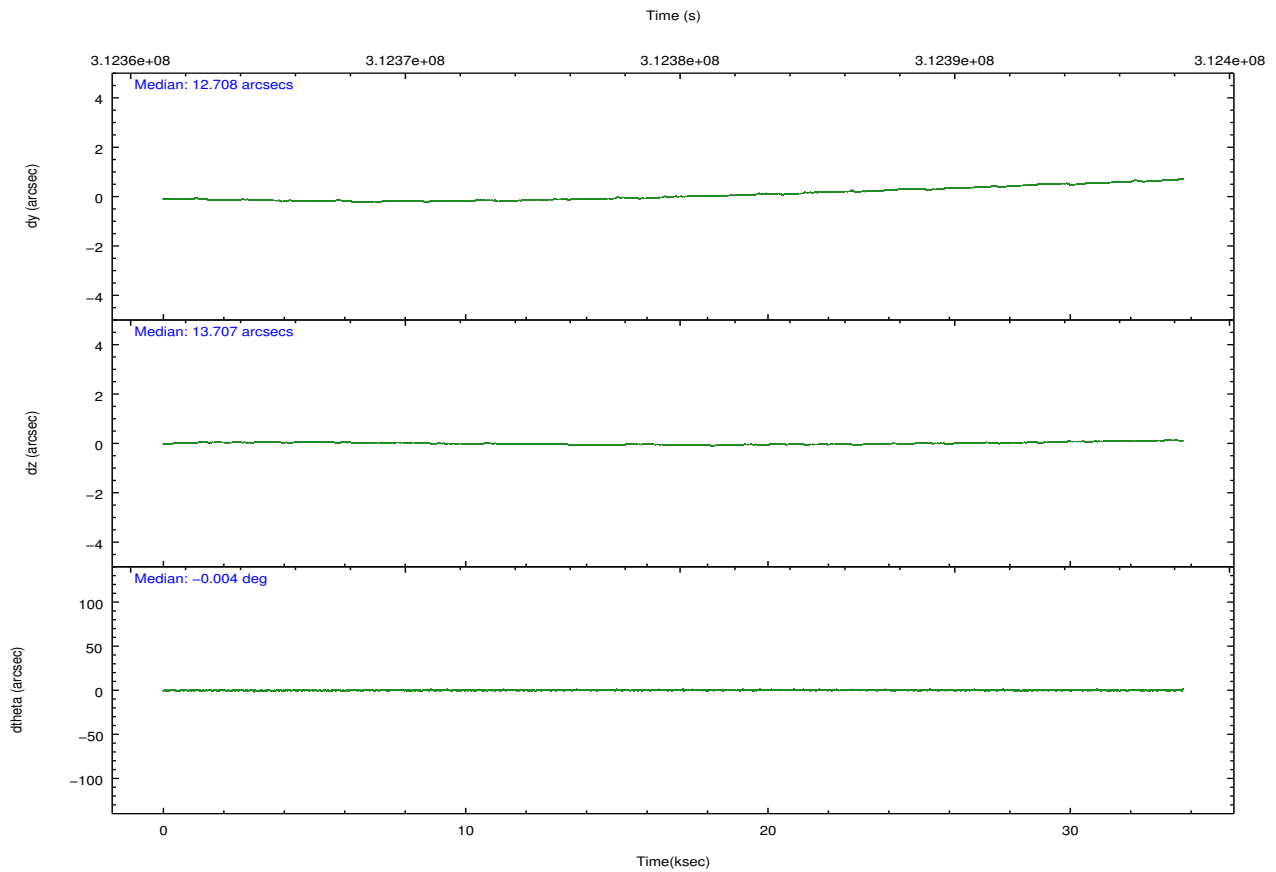
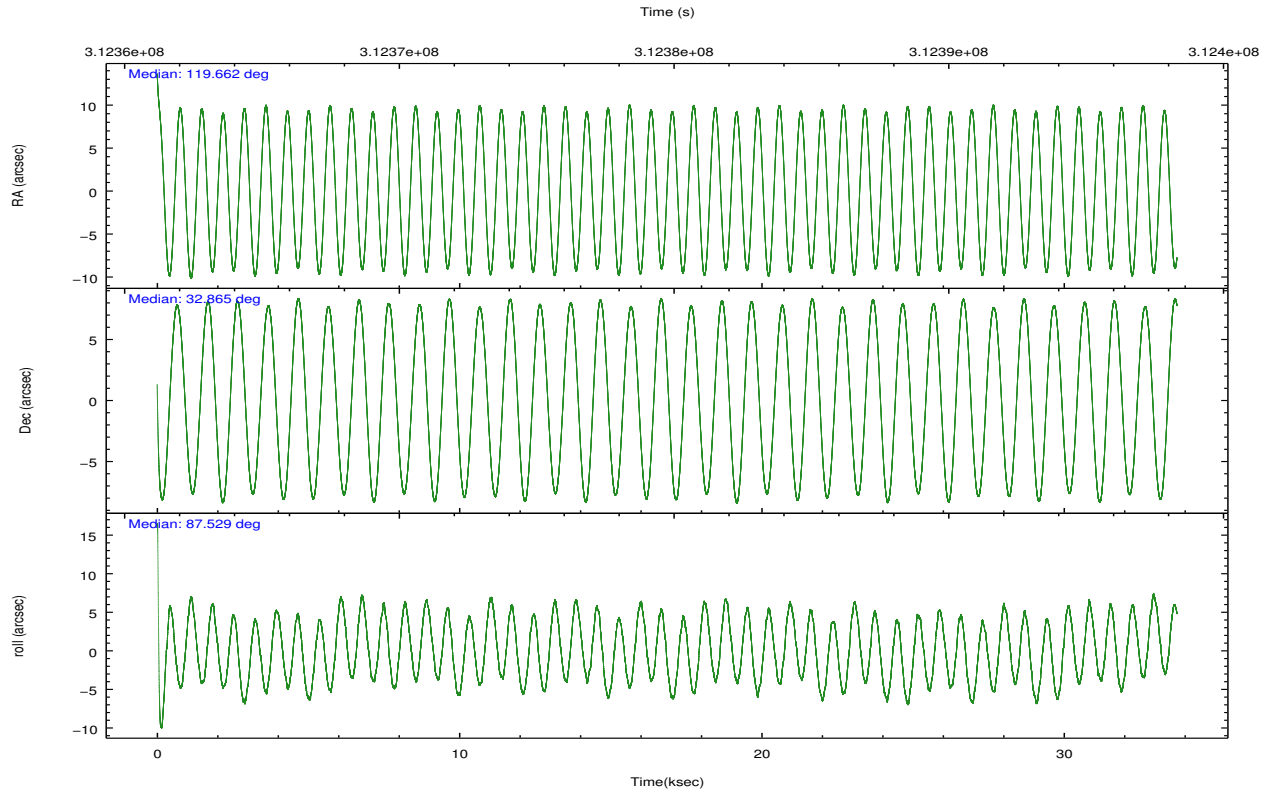
	ccd 2	ccd 3	ccd 5	ccd 6	ccd 7	ccd 8		ccd 2	ccd 3	ccd 5	ccd 6	ccd 7	ccd 8
level 1 events	277668	248557	354627	265118	282828	326436	grade 0 events	10049	8489	15487	9206	11962	23029
rejected events	250888	224829	177448	238546	152968	247925		3%	3%	4%	3%	4%	7%
rejected %	90%	90%	50%	89%	54%	75%	grade 1 events	157	133	1402	141	359	273
								0%	0%	0%	0%	0%	0%
							grade 2 events	6339	5100	51603	5830	25927	18259
								2%	2%	14%	2%	9%	5%
							grade 3 events	2708	2731	9755	2942	11882	8698
								0%	1%	2%	1%	4%	2%
							grade 4 events	2778	2700	6839	2774	11692	8026
								1%	1%	1%	1%	4%	2%
							grade 5 events	8550	9890	27856	10152	29613	15045
								3%	3%	7%	3%	10%	4%
							grade 6 events	4912	4711	93531	5827	68421	20518
								1%	1%	26%	2%	24%	6%
							grade 7 events	242175	214803	148154	228246	122972	232588
								87%	86%	41%	86%	43%	71%

2.2 Compared Parameters

Parameter	Planned	Actual	Parameter	Planned	Actual
Instrument	ACIS	ACIS	Obspar format version number	7	7
Detector	ACIS-235678	ACIS-235678	Obspar file type	PREDICTED	ACTUAL
Grating	NONE	NONE	Obspar update status	NONE	UPDATED
Data mode	VFAINT	VFAINT	Number of optional ACIS chips dropped	0	0
Observation mode	POINTING	POINTING	On-chip summing requested	N	N
[deg] Pointing RA	119.677834	119.6623906873338	Subarray requested	NONE	NONE
[deg] Pointing Dec	32.840947	32.86501707832787	Alternating exposures requested	N	N
[deg] Pointing Roll	87.370550	87.53556491295808	[s] Primary exposure time	0.000000	3.2
[mm] SIM focus pos	-0.684267	-0.6828225247311905			
[mm] SIM defocus	0	0.001444936568705701			
[mm] SIM translation stage pos	-190.132523	-190.1400660498719			
[mm] SIM translation stage offset	0	0.00754346686406393			
[s] Observation start time (MET)	312363606.184000	312362323.77457			
Observation start date	2007-11-25T07:39:01	2007-11-25T07:18:43			
[s] Observation end time (MET)	312396606.184000	312397383.38877			
Observation end date	2007-11-25T16:49:01	2007-11-25T17:03:03			
Read mode	TIMED	TIMED			

2.3 Aspect



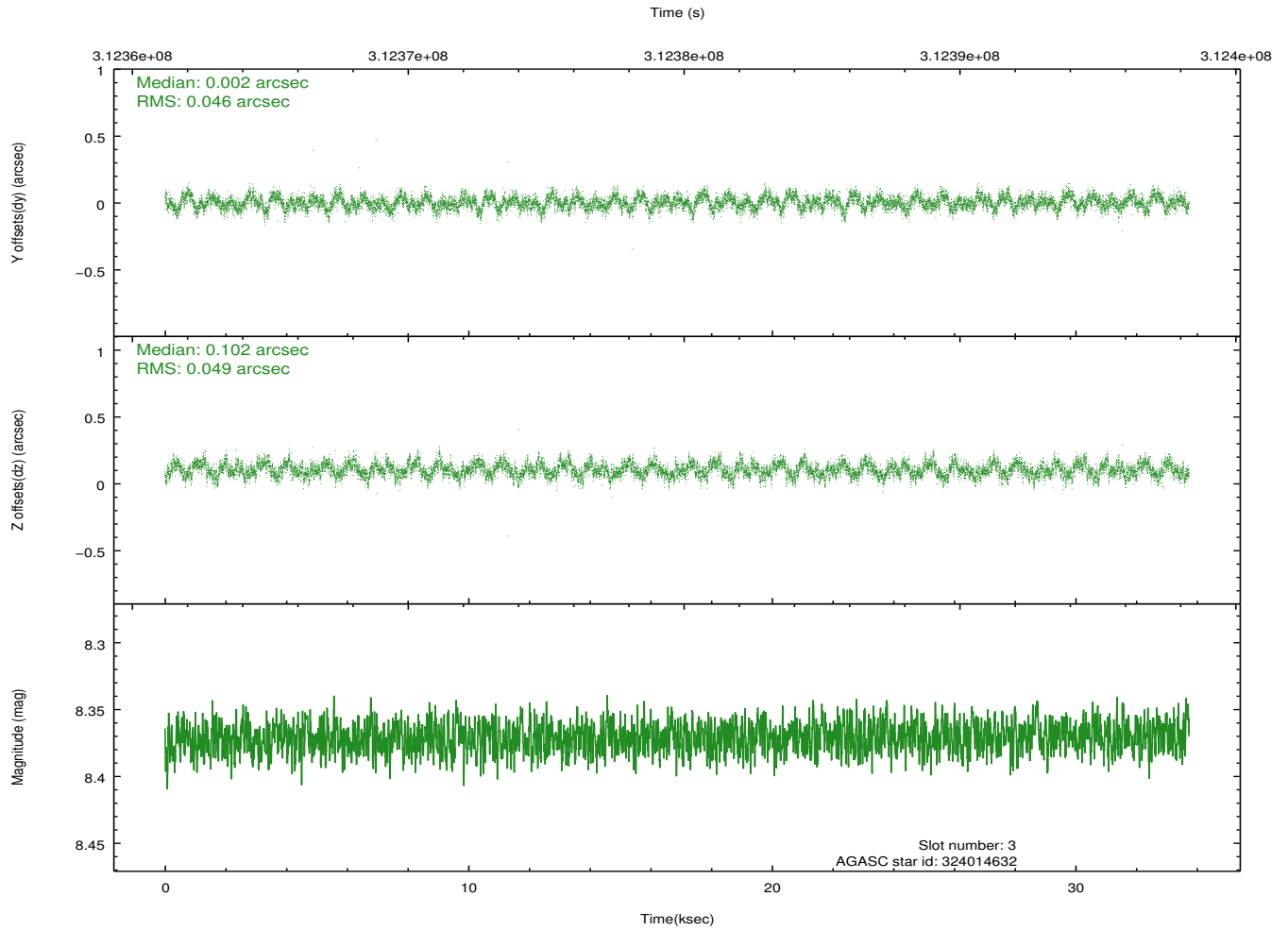
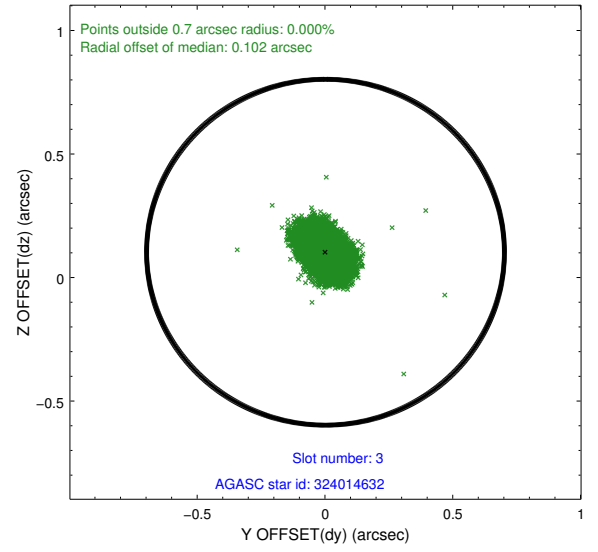
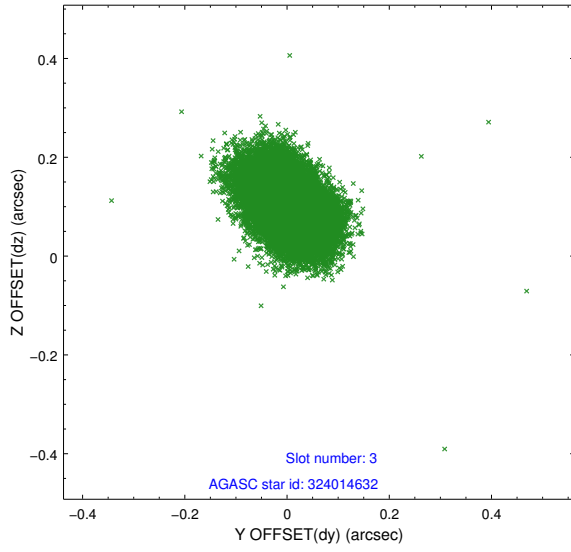


Slot Statistics

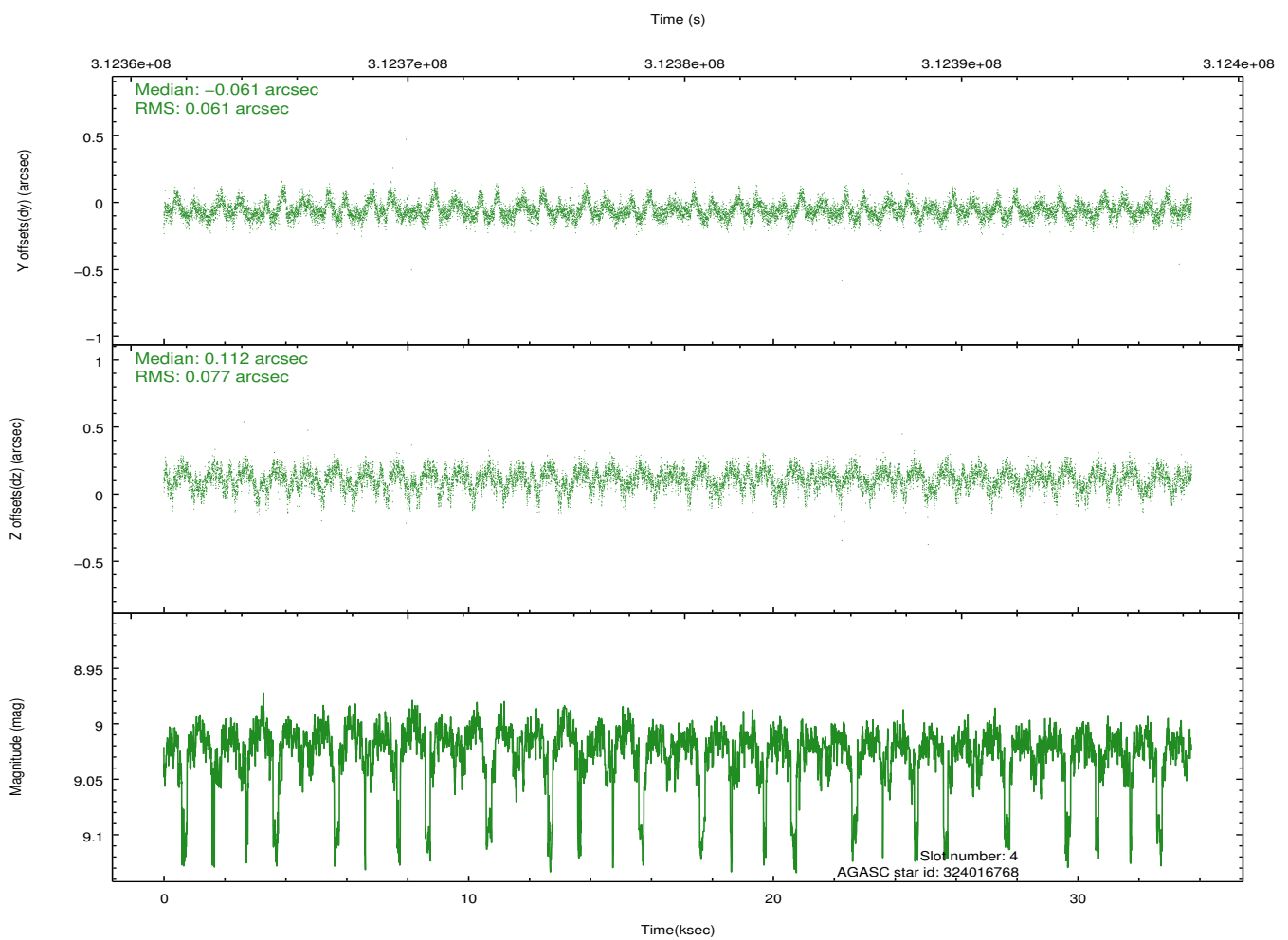
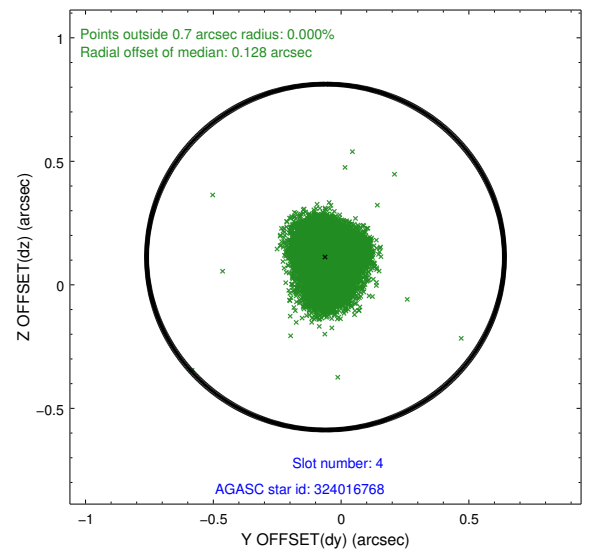
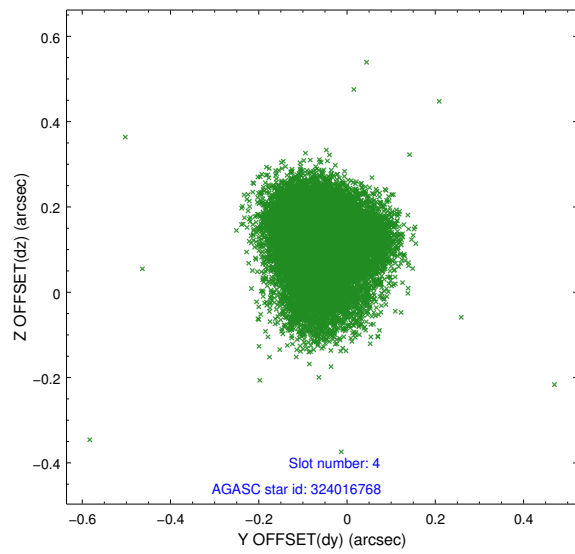
slot	status	id	mag	n_pts	med_dy	med_dz	dr1	dr2	ra	dec	mean_y	mean_z
0	FID	ACIS-S-2	7.10	8228	-0.031	-0.052	0.009	0.016	0.000000	0.000000	-765.73	-1735.11
1	FID	ACIS-S-4	7.19	8228	0.139	0.029	0.012	0.035	0.000000	0.000000	2147.69	173.41
2	FID	ACIS-S-5	7.23	8228	-0.141	0.032	0.012	0.023	0.000000	0.000000	-1818.63	167.13
3	GUIDE	324014632	8.37	16454	0.002	0.102	0.072	0.117	119.811449	33.063711	820.06	-365.65
4	GUIDE	324016768	9.02	16387	-0.061	0.112	0.104	0.167	120.148282	32.920902	356.25	-1406.63
5	GUIDE	324019392	7.75	16436	0.029	0.083	0.061	0.097	119.909862	32.695782	-488.73	-726.15
6	GUIDE	324019840	7.14	16456	-0.085	-0.178	0.061	0.093	119.493516	32.941002	334.47	572.74
7	GUIDE	324010008	7.47	16454	0.108	-0.121	0.067	0.109	119.385930	32.656709	-701.87	853.62

2.4 Star Slots

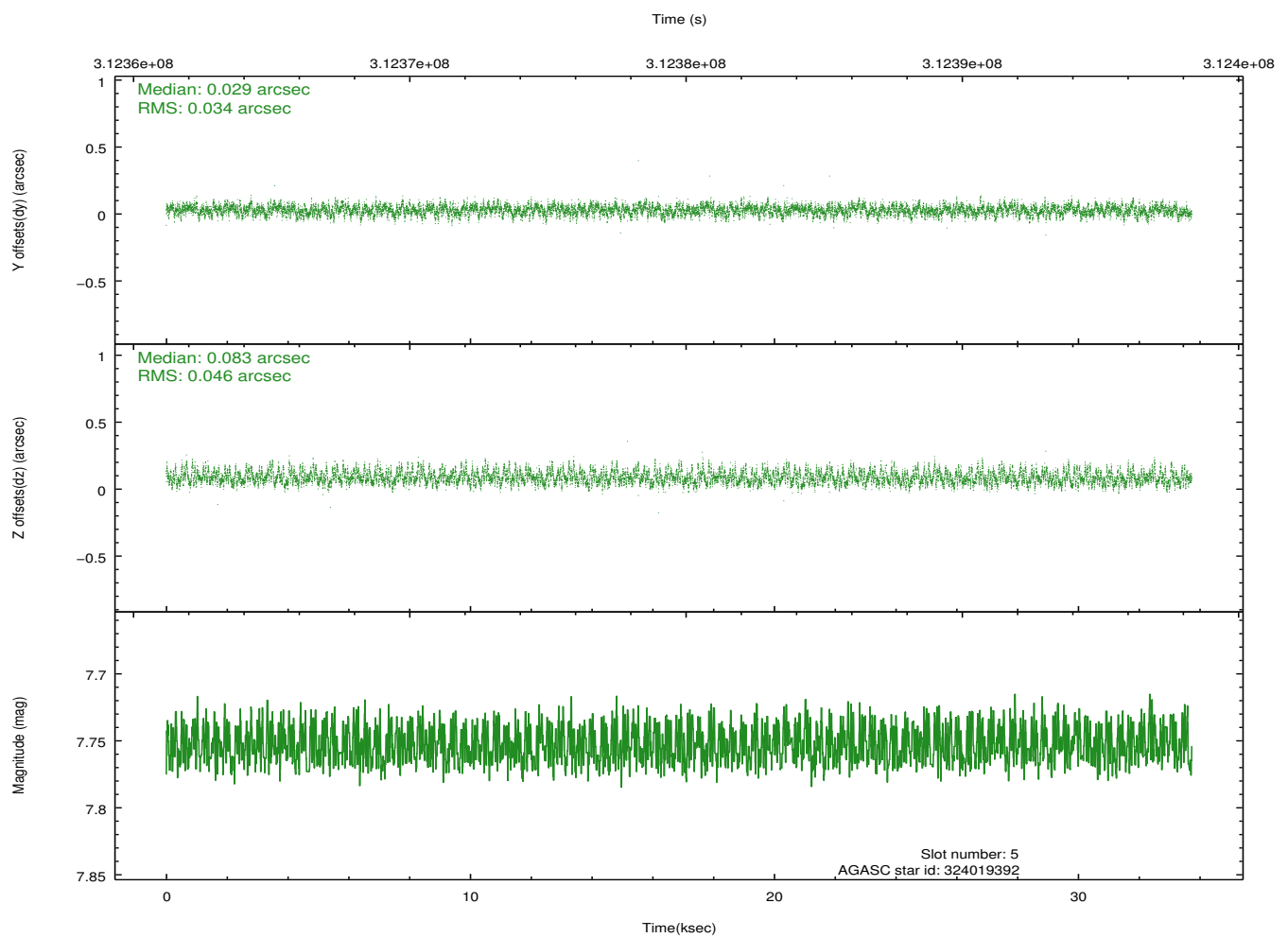
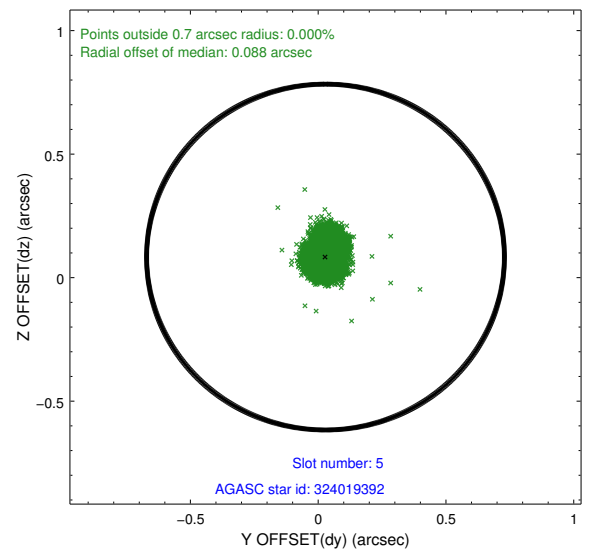
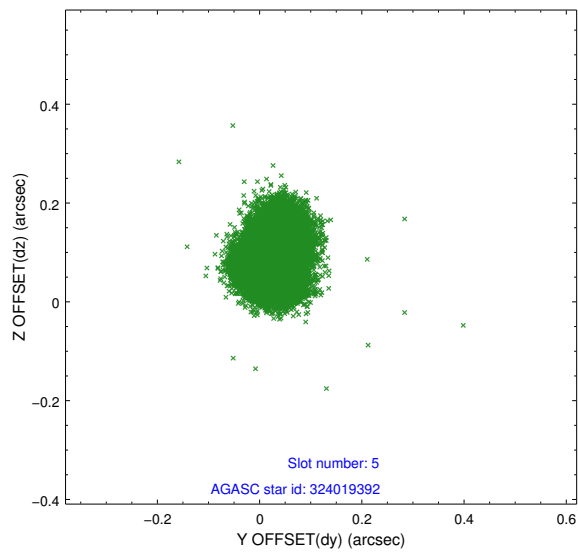
2.4.1 Slot 3



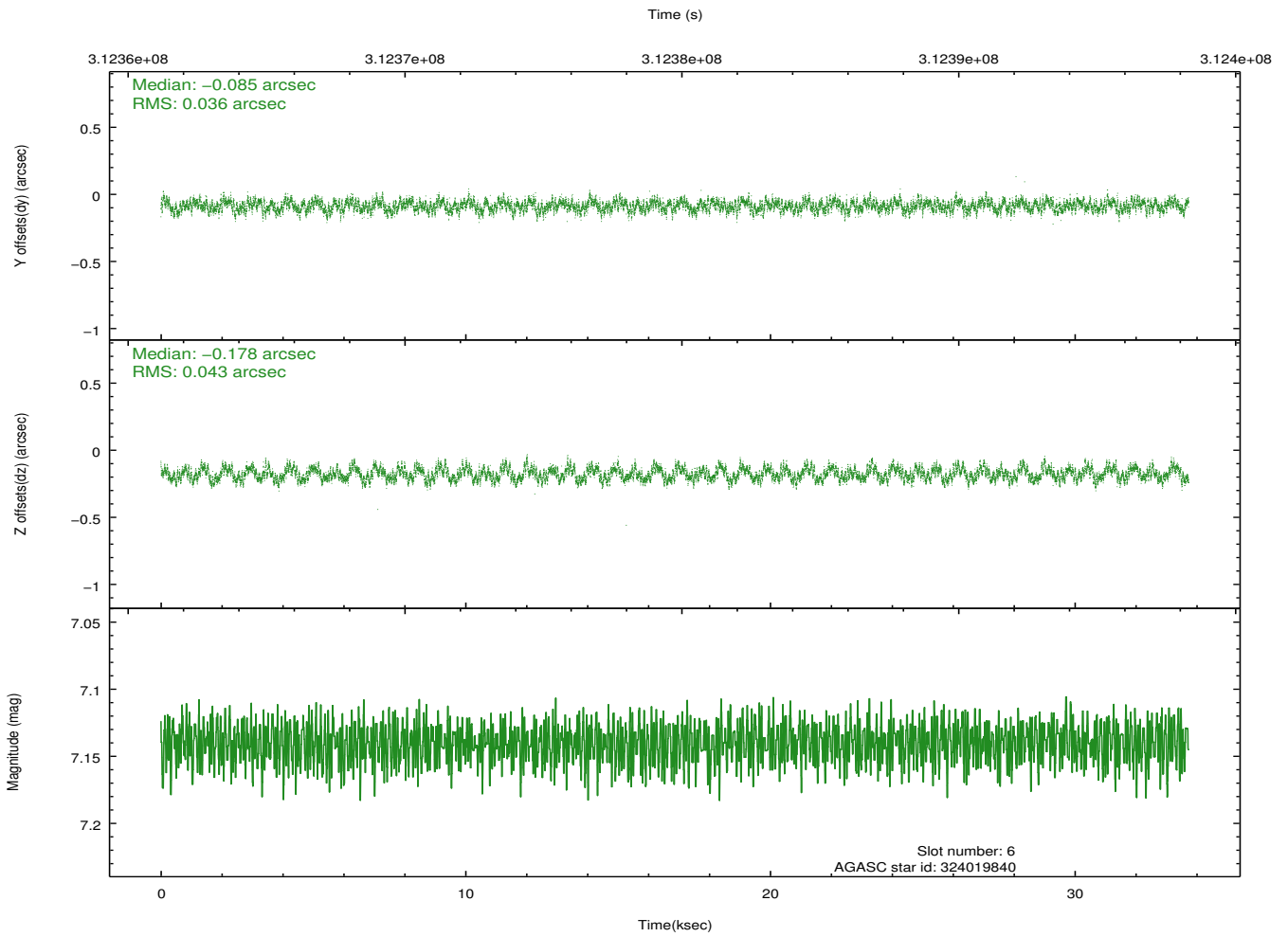
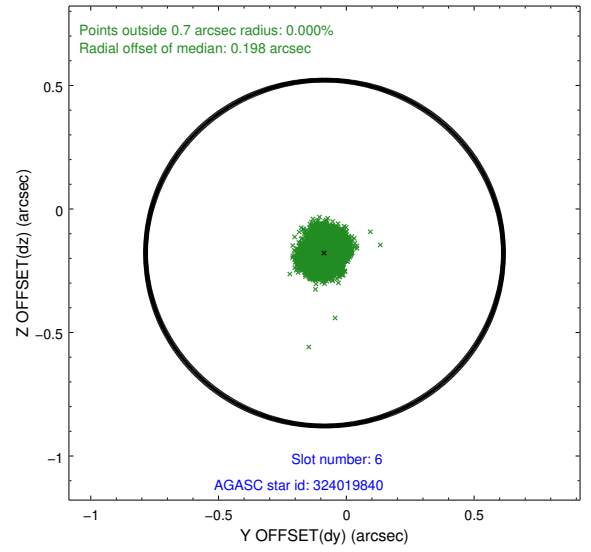
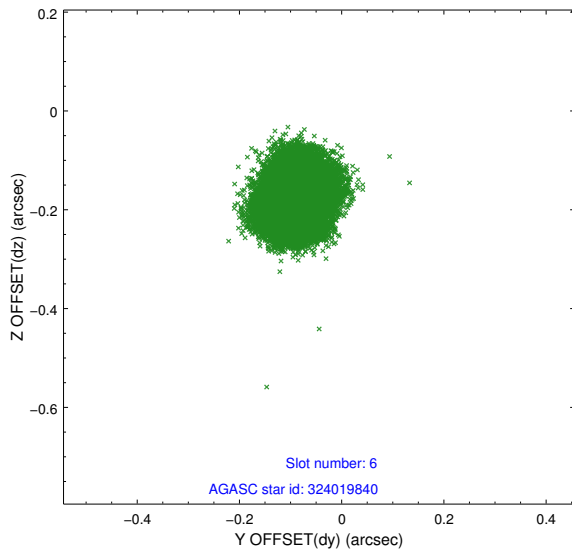
2.4.2 Slot 4



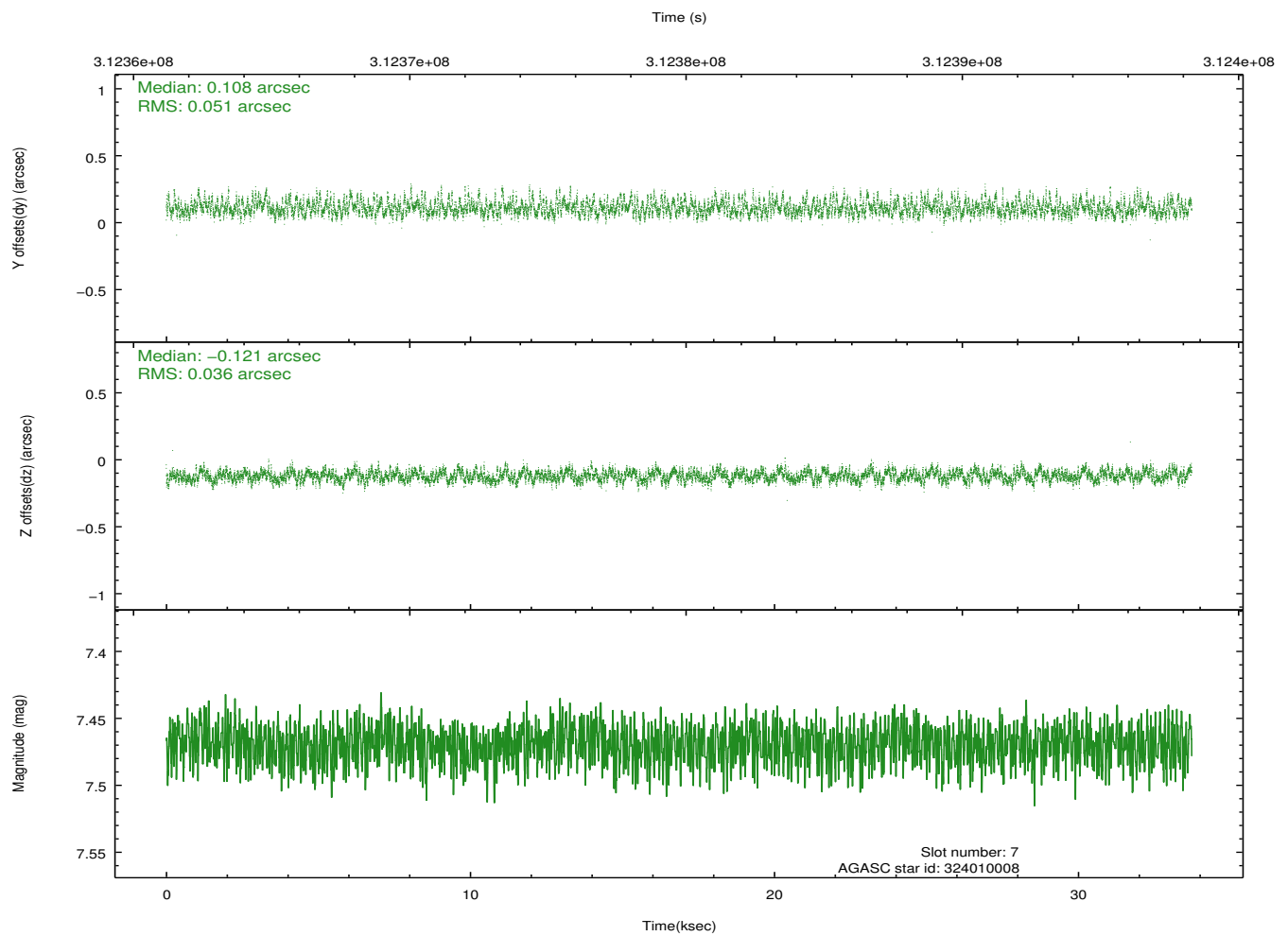
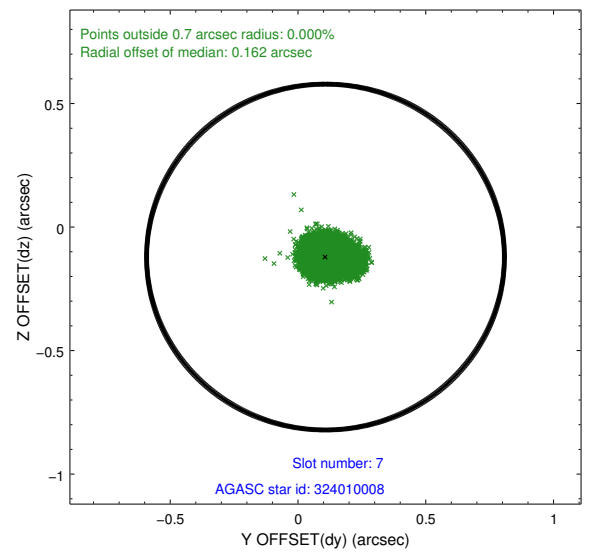
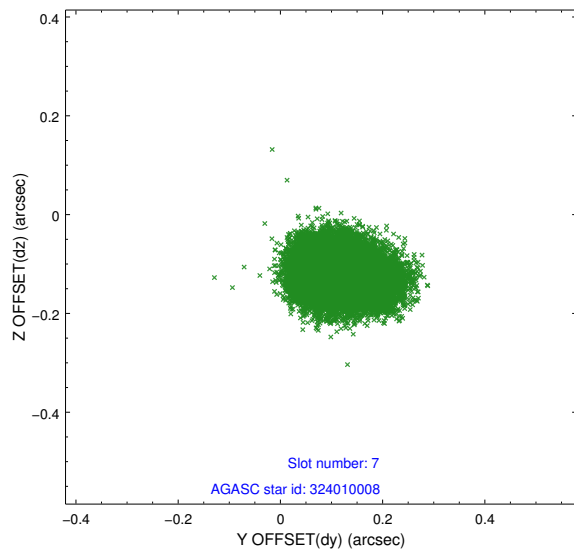
2.4.3 Slot 5



2.4.4 Slot 6

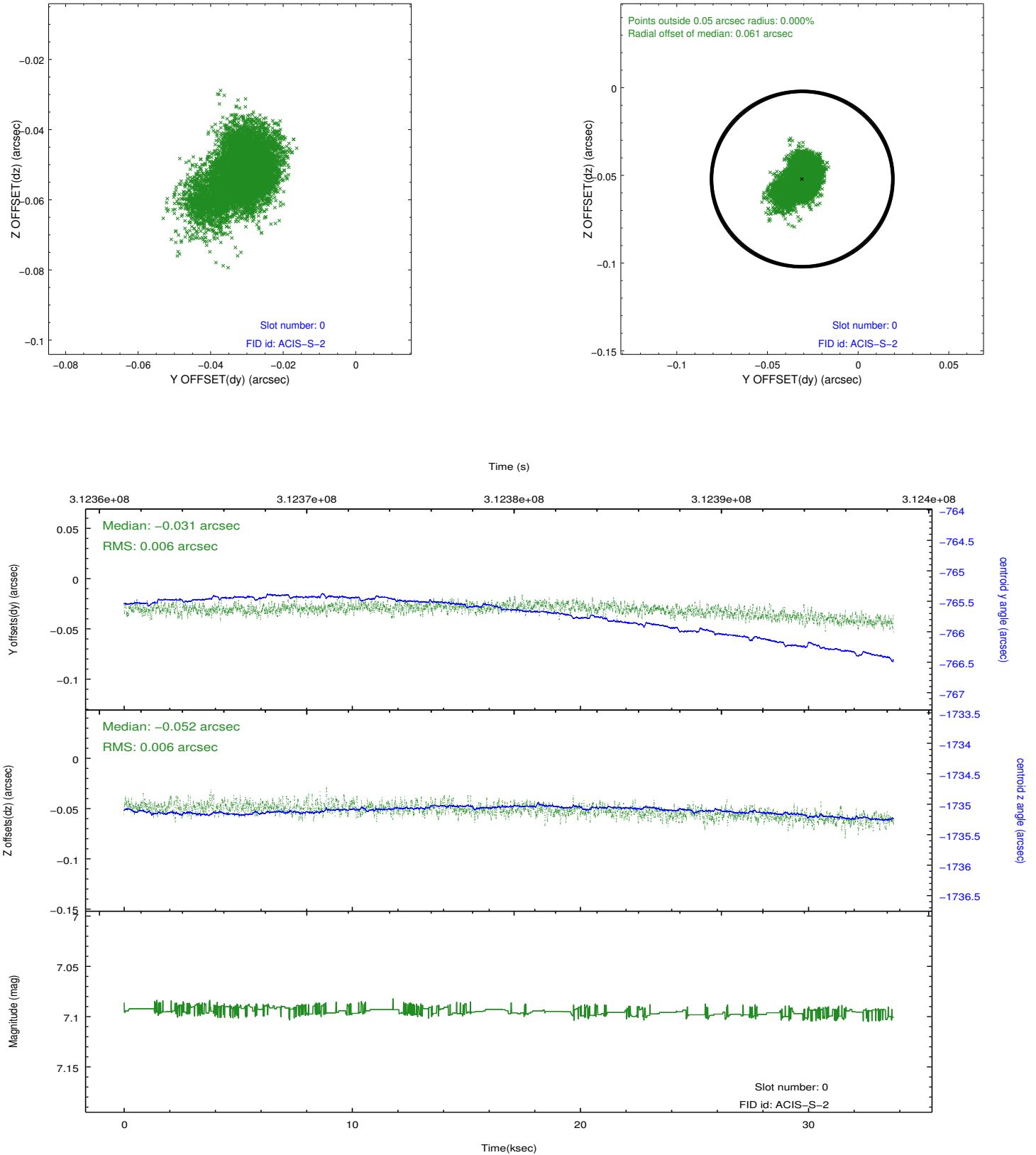


2.4.5 Slot 7

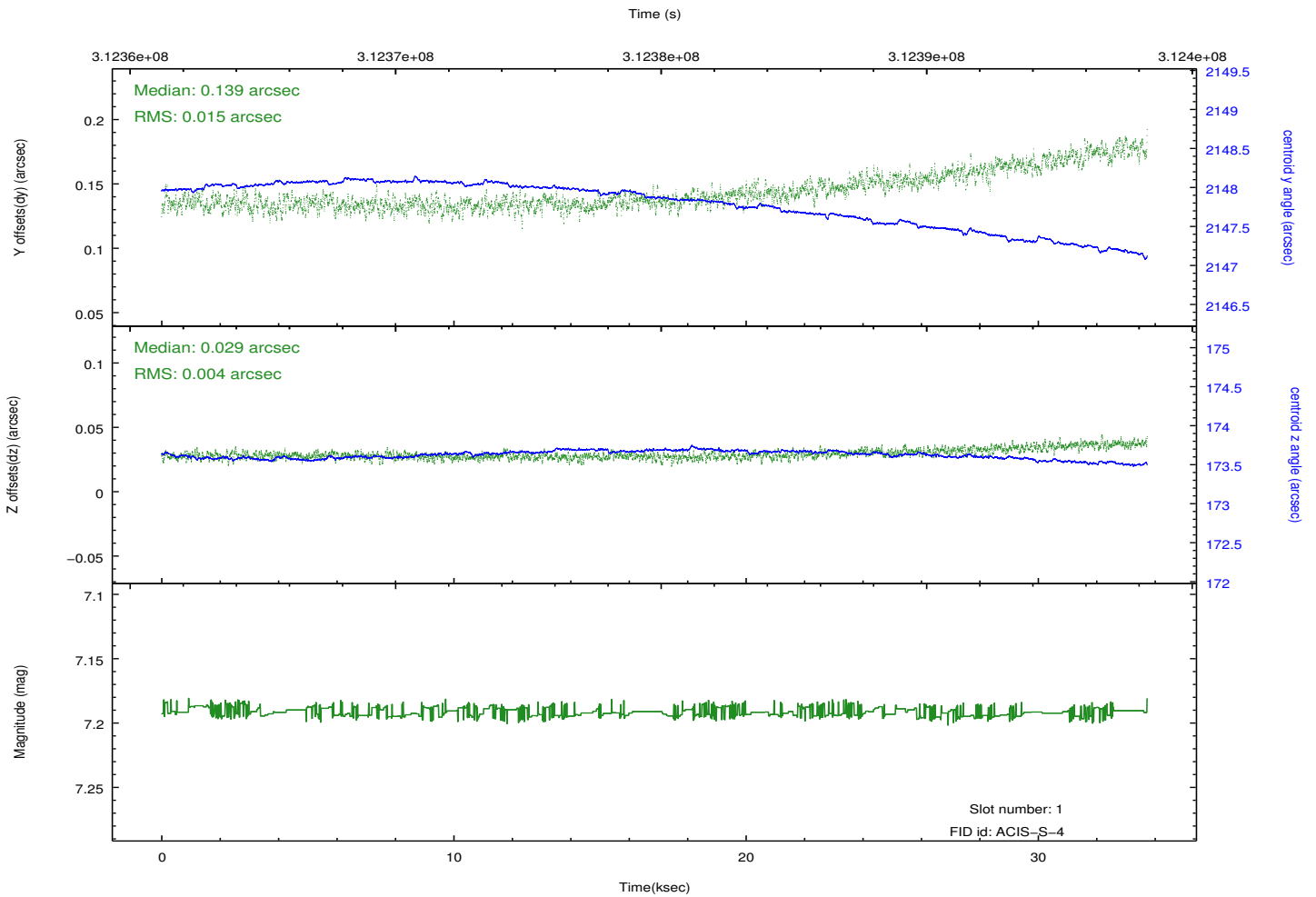
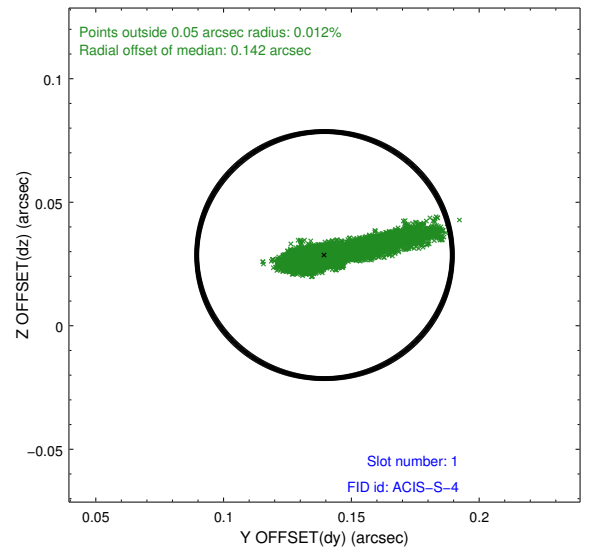
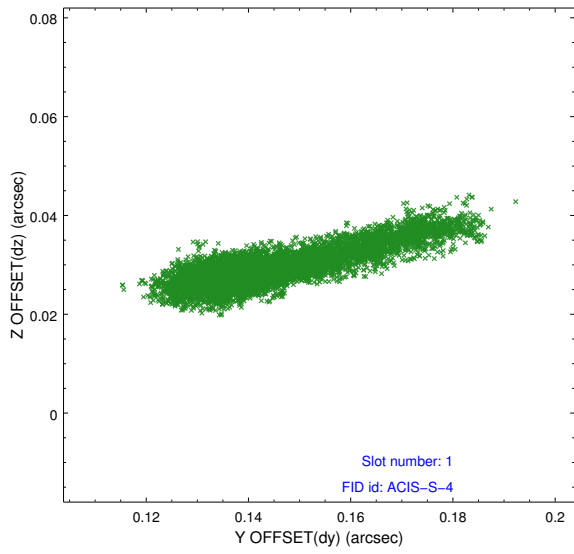


2.5 FID Slots

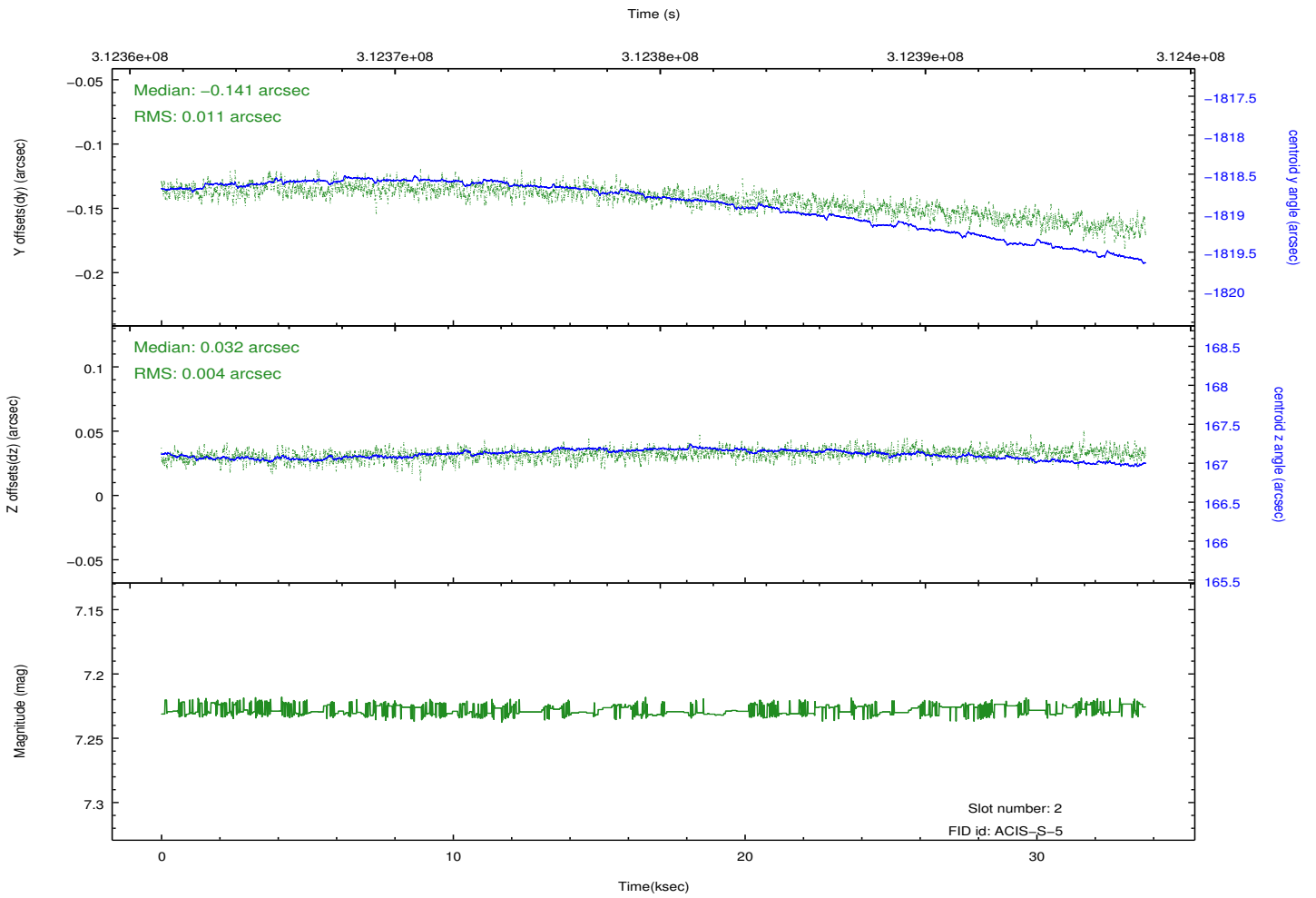
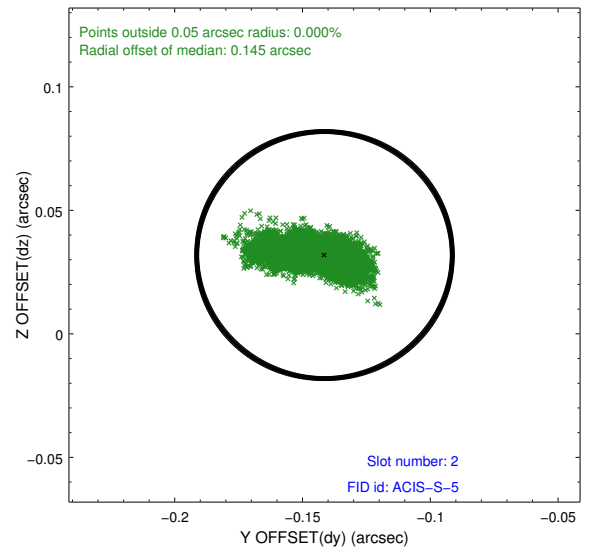
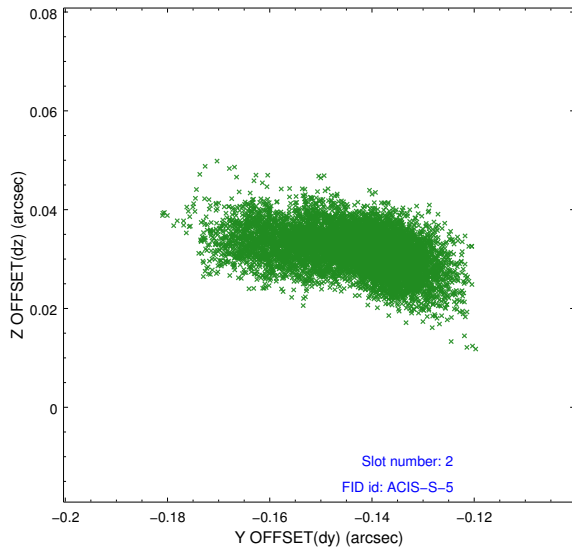
2.5.1 Slot 0



2.5.2 Slot 1



2.5.3 Slot 2



A Summary

A.1 Status

V&V Scientist	Jen Lauer
V&V Date (YYYY-MM-DD)	2012.05.07
V&V Edition	1
V&V Disposition and Status	OK
V&V Charge Time	33.0431998

A.2 Comments

All of the guide stars for this observation are good and relatively low noise. The absolute astrometry for this observation should be fine. The fid light in slot 1 appears to demonstrate some minor (normal) thermal settling. All slots are well within the aspect team's specified parameters. If there is a large deviation from the expected position of the source, this is likely due to error in the expected source position.