

V&V Reference Report

L2 ASCDS Version : 8.4.5

Observation 760 - L2 Version 4
Chandra X-Ray Center

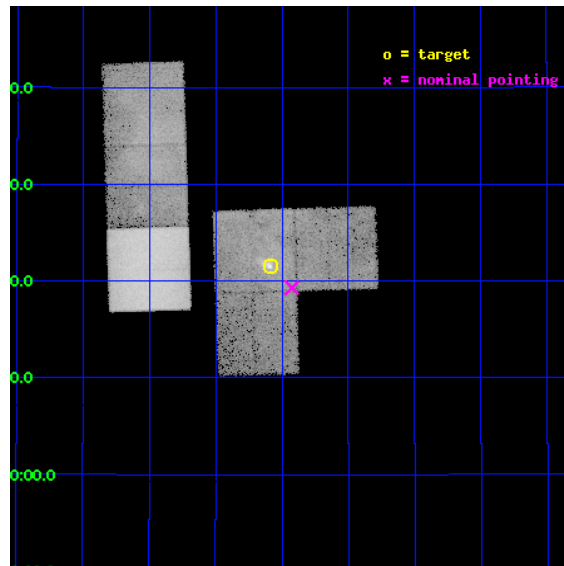
L2 Processing Date : Aug 25 2012

Contents

1	Front	2
2	OBI	3
2.1	OBI	3
2.1.1	Images	3
2.1.2	Bias	3
2.1.3	Parameters	4
2.1.4	Events	4
2.2	Compared Parameters	5
2.3	Aspect	6
2.4	Star Slots	9
2.4.1	Slot 3	9
2.4.2	Slot 4	10
2.4.3	Slot 5	11
2.4.4	Slot 6	12
2.4.5	Slot 7	13
2.5	FID Slots	14
2.5.1	Slot 0	14
2.5.2	Slot 1	15
2.5.3	Slot 2	16
A	Summary	17
A.1	Status	17
A.2	Comments	17

1 Front

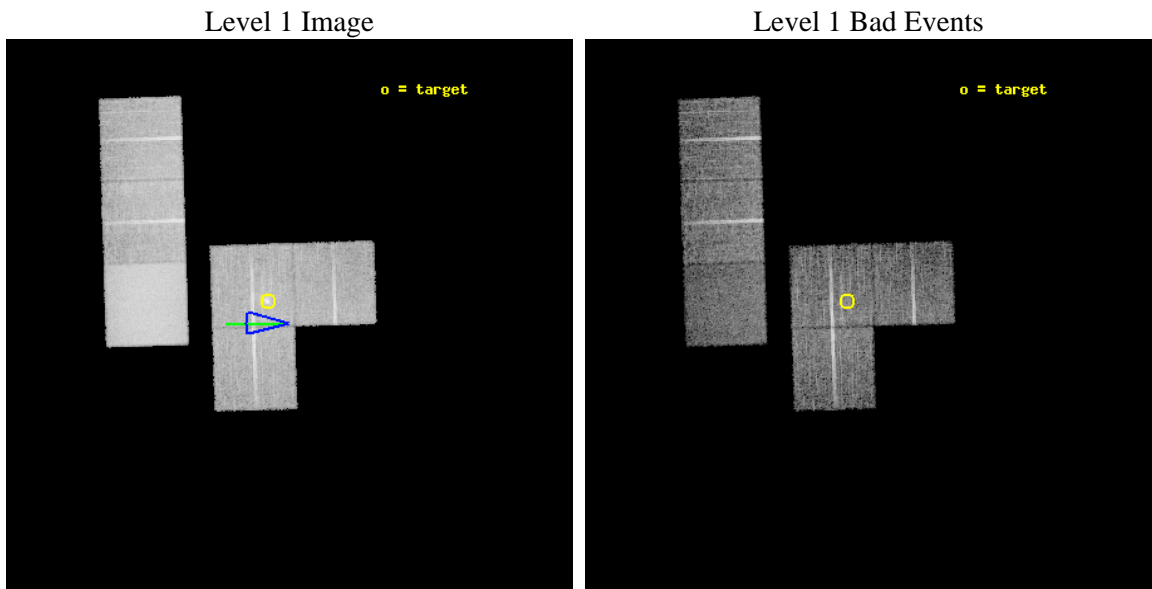
seq_num	500056	Sequence number
obs_id	760	Observation id
title	RESOLVING THE QUESTION OF IC443'S HARD EMISSION	Proposal title
observer	Dr. Jonathan Keohane	Principal investigator
object	IC 443	Source name
dtycycle	0	
cycle	P	events from which exps? Prim/Second/Both
ra_targ	94.270833	Observer's specified target RA [deg]
dec_targ	22.358333	Observer's specified target Dec [deg]
ra_nom	94.231245590779	Nominal RA [deg]
dec_nom	22.321652233905	Nominal Dec [deg]
roll_nom	268.22867084947	Nominal Roll [deg]
revision	4	Processing version of data
ontime	9714.2679970264	Sum of GTIs [s]
livetime	9591.2600864182	Livetime [s]
ontime1	9714.1859170347	Sum of GTIs [s]
ontime2	9714.226957038	Sum of GTIs [s]
ontime3	9714.2679970264	Sum of GTIs [s]
ontime7	9714.3090370297	Sum of GTIs [s]
ontime8	9714.1448770314	Sum of GTIs [s]
ontime9	9714.350077033	Sum of GTIs [s]
l2events	269945	Number of level 2 events



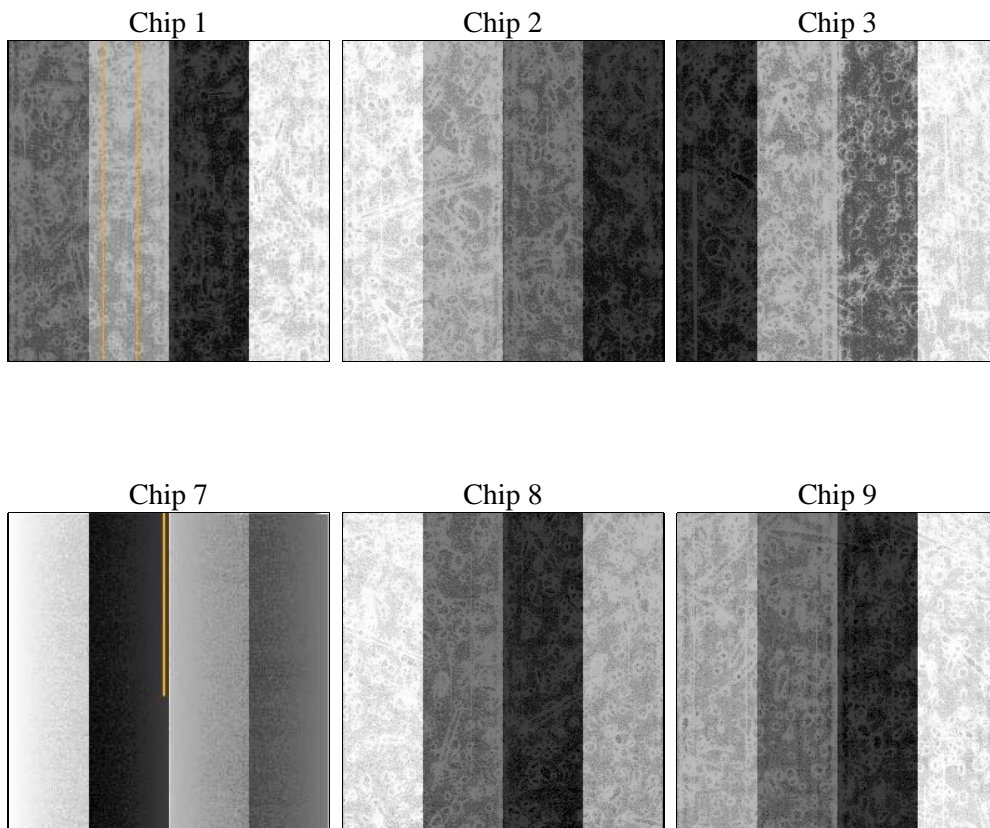
2 OBI

2.1 OBI

2.1.1 Images



2.1.2 Bias



2.1.3 Parameters

obi_num	0	Obi number	sched_exp_time	9800.000000	[s] Scheduled observation exposure time
ascdsver	8.4.5	Processing system revision	ontime	9714.2679970264	Sum of GTIs [s]
caldbver	4.5.1.1	 	ontime1	9714.1859170347	Sum of GTIs [s]
date	2012-08-25T15:16:02	Date and time of file creation	ontime2	9714.226957038	Sum of GTIs [s]
revision	4	Processing version of data	ontime3	9714.2679970264	Sum of GTIs [s]
			ontime7	9714.3090370297	Sum of GTIs [s]
			ontime8	9714.1448770314	Sum of GTIs [s]
			ontime9	9714.350077033	Sum of GTIs [s]
			l1events	655279	Number of level 1 events

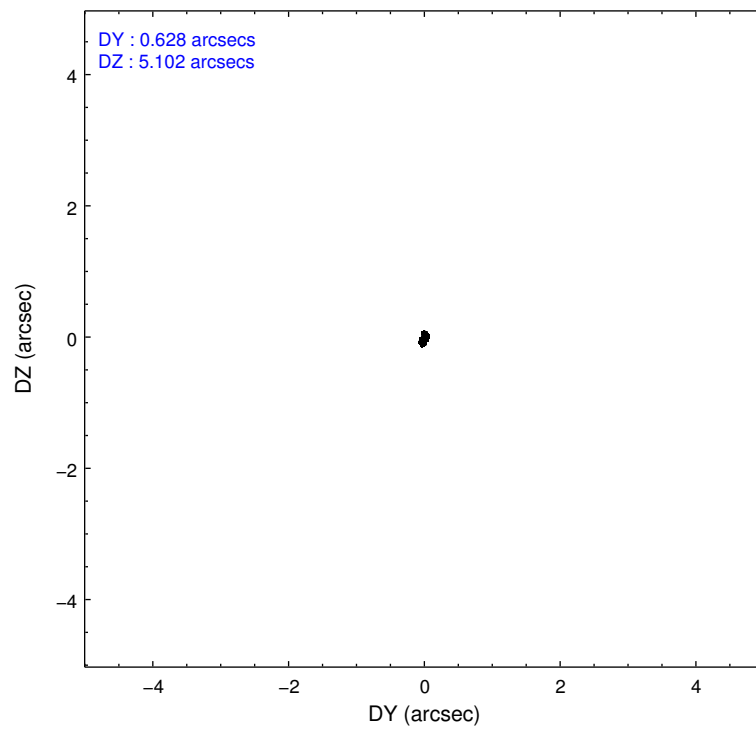
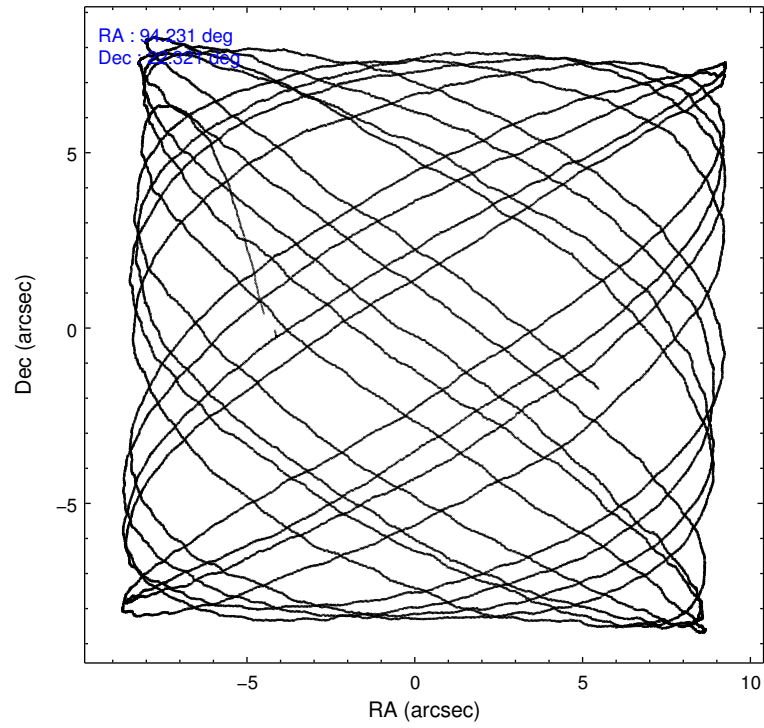
2.1.4 Events

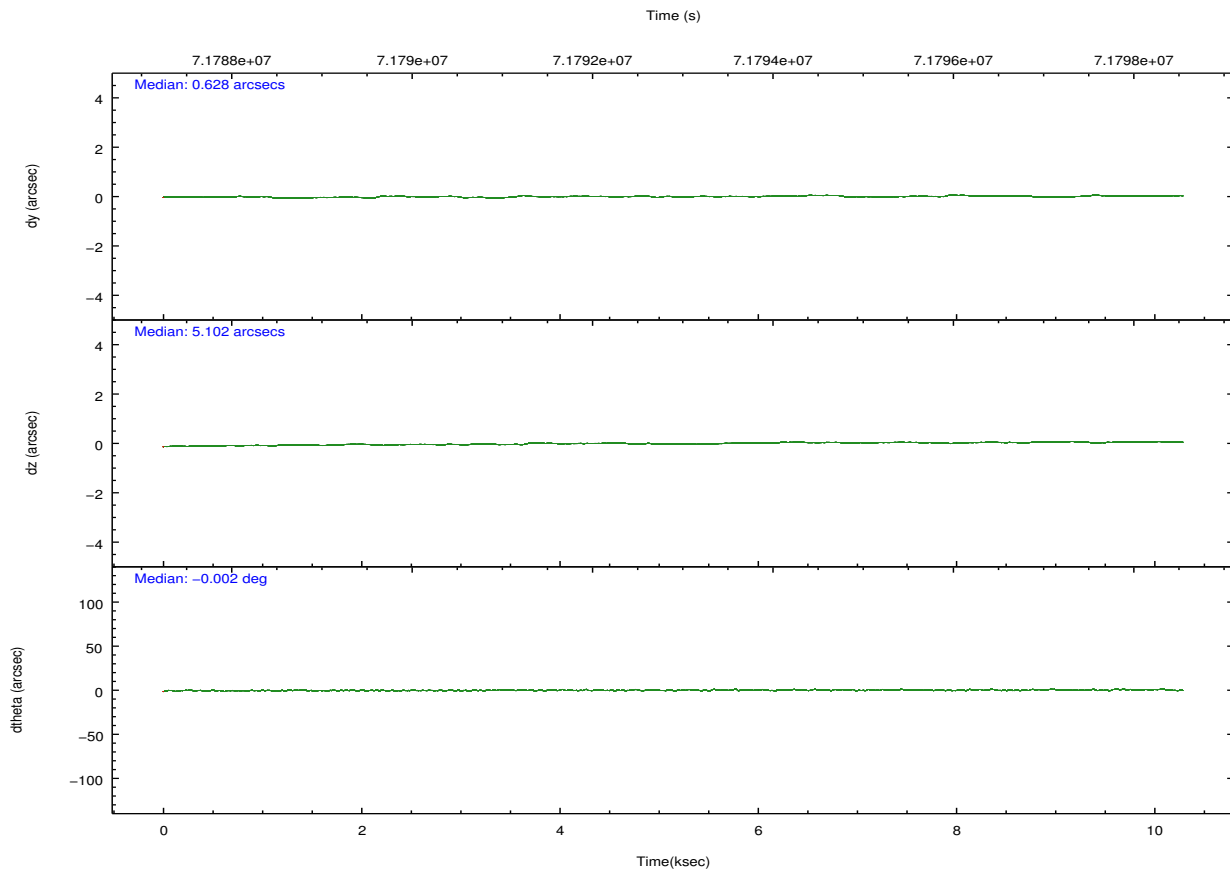
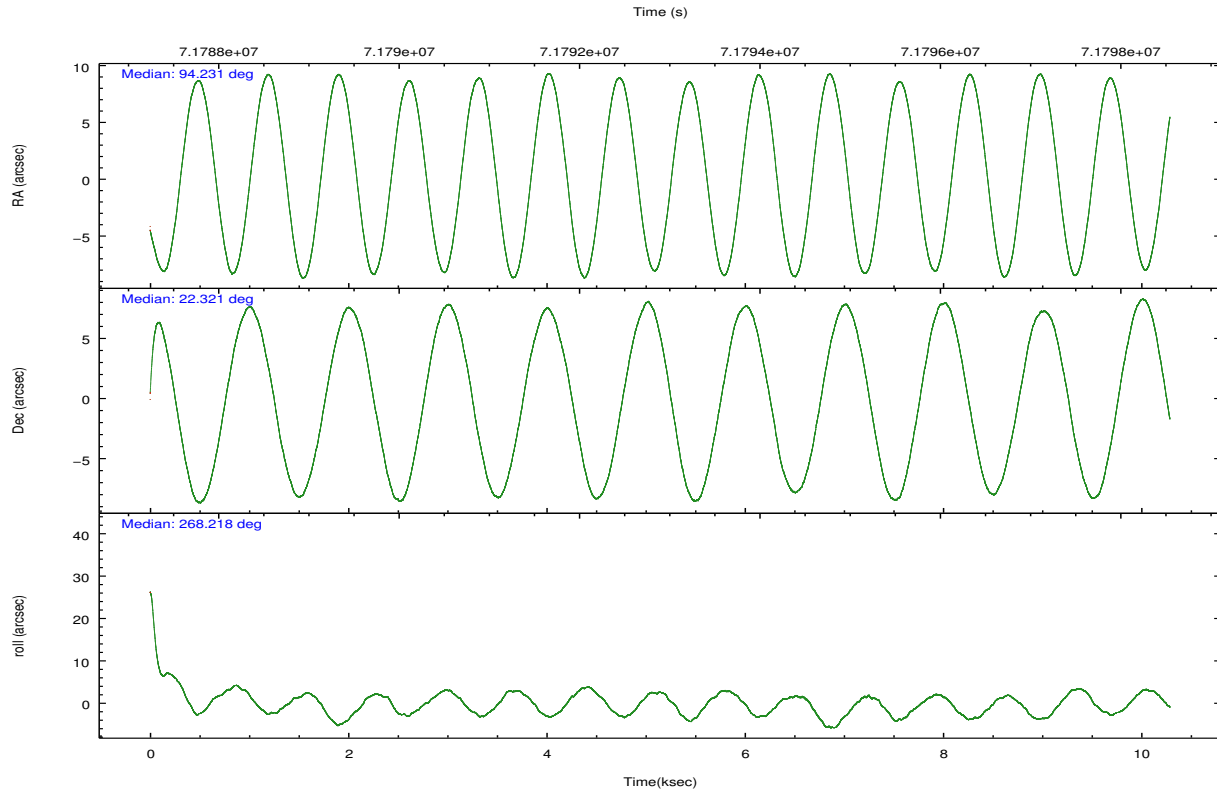
	ccd 1	ccd 2	ccd 3	ccd 7	ccd 8	ccd 9		ccd 1	ccd 2	ccd 3	ccd 7	ccd 8	ccd 9
level 1 events	78565	81097	99705	189199	108902	97811	grade 0 events	16573	11459	25779	17941	25872	26338
rejected events	54973	63990	65413	48248	69018	63182		21%	14%	25%	9%	23%	26%
rejected %	69%	78%	65%	25%	63%	64%	grade 1 events	85	65	115	80	131	134
								0%	0%	0%	0%	0%	0%
							grade 2 events	2970	2362	3900	26577	5289	3925
								3%	2%	3%	14%	4%	4%
							grade 3 events	1222	984	1473	11964	2350	1332
								1%	1%	1%	6%	2%	1%
							grade 4 events	1204	911	1423	11900	2197	1234
								1%	1%	1%	6%	2%	1%
							grade 5 events	2290	2116	2354	8208	3191	2762
								2%	2%	2%	4%	2%	2%
							grade 6 events	1644	1406	1749	72624	4213	1826
								2%	1%	1%	38%	3%	1%
							grade 7 events	52577	61794	62912	39905	65659	60260
								66%	76%	63%	21%	60%	61%

2.2 Compared Parameters

Parameter	Planned	Actual	Parameter	Planned	Actual
Instrument	ACIS	ACIS	Obspar format version number	7	7
Detector	ACIS-123789	ACIS-123789	Obspar file type	PREDICTED	ACTUAL
Grating	NONE	NONE	Obspar update status	NONE	UPDATED
Data mode	FAINT	FAINT	Number of optional ACIS chips dropped	0	0
Observation mode	POINTING	POINTING	On-chip summing requested	N	N
[deg] Pointing RA	94.217362	94.23124559077904	Subarray requested	NONE	NONE
[deg] Pointing Dec	22.346043	22.3216522339045	Alternating exposures requested	N	N
[deg] Pointing Roll	268.025240	268.2286708494672	[s] Primary exposure time	0.000000	3.2
[deg] Roll angle	270.000000	270.000000			
[deg] Roll tolerance	15.000000	15.000000			
Roll constraint allows 180D rotation	N	N			
[mm] SIM focus pos	-0.782348	-0.7809083437167272			
[mm] SIM defocus	0	0.001439871863259334			
[mm] SIM translation stage pos	-233.592463	-233.5874344608287			
[mm] SIM translation stage offset	0	-0.005018542100998502			
[s] Observation start time (MET)	71788235.184000	71787145.857049			
Observation start date	2000-04-10T21:09:31	2000-04-10T20:52:25			
[s] Observation end time (MET)	71798035.184000	71798707.857473			
Observation end date	2000-04-10T23:52:51	2000-04-11T00:05:07			
Read mode	TIMED	TIMED			

2.3 Aspect



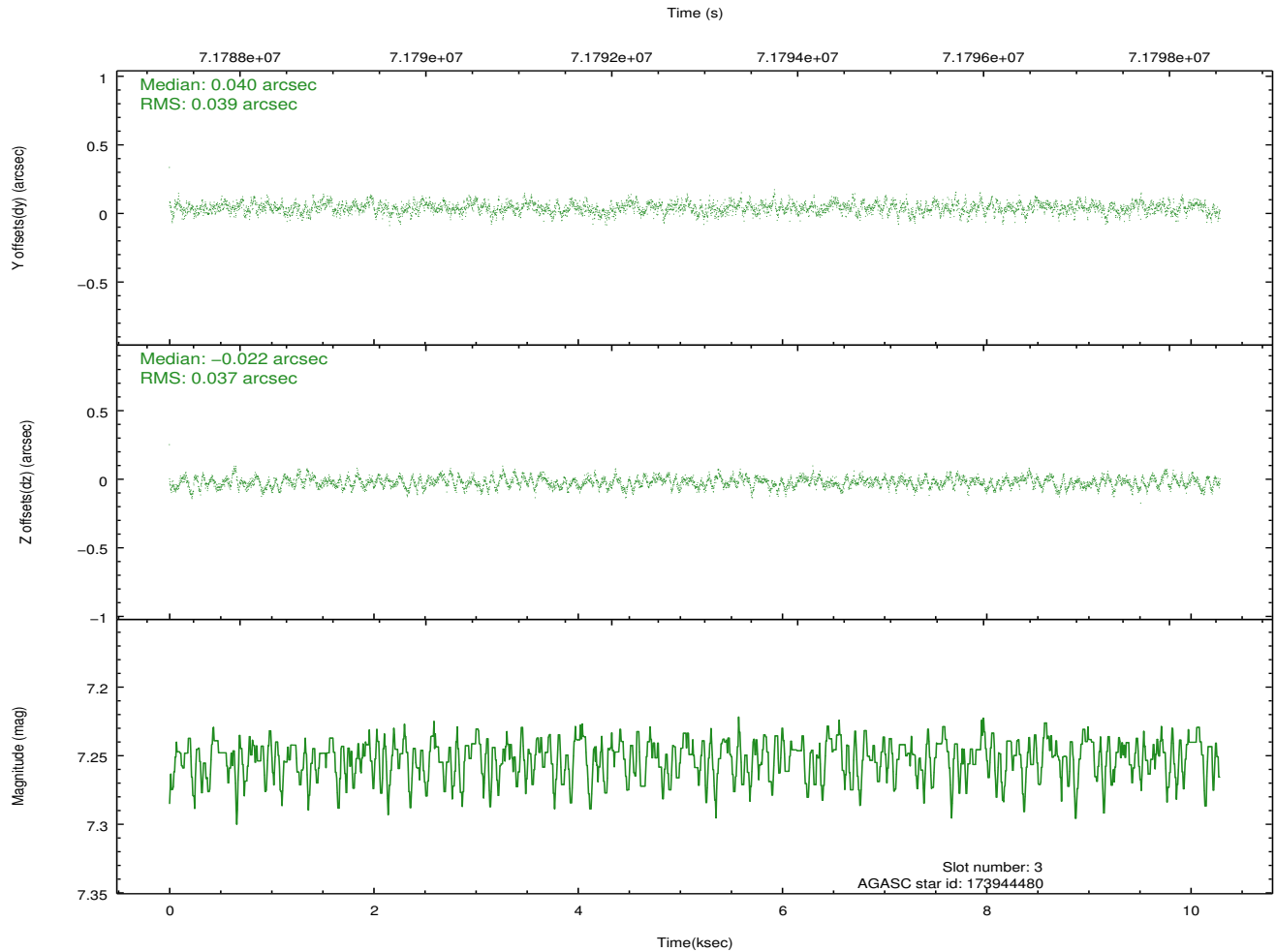
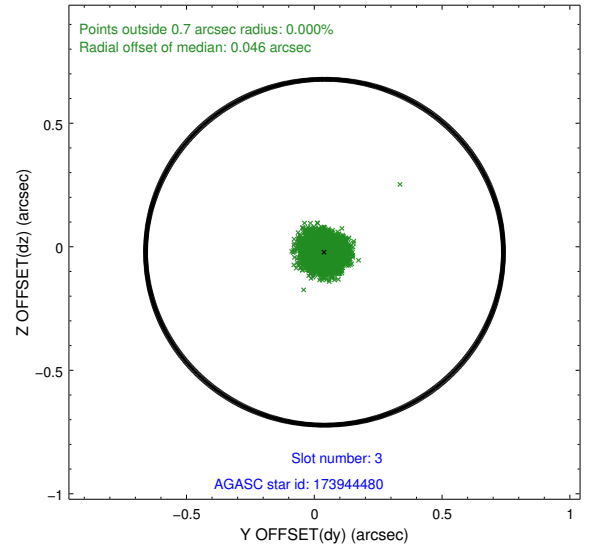
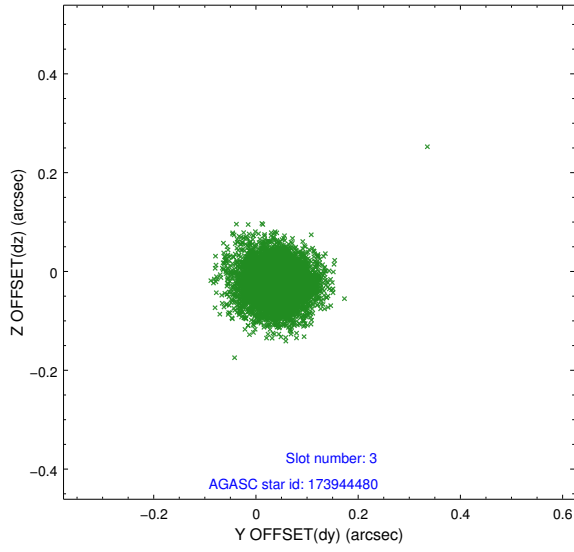


Slot Statistics

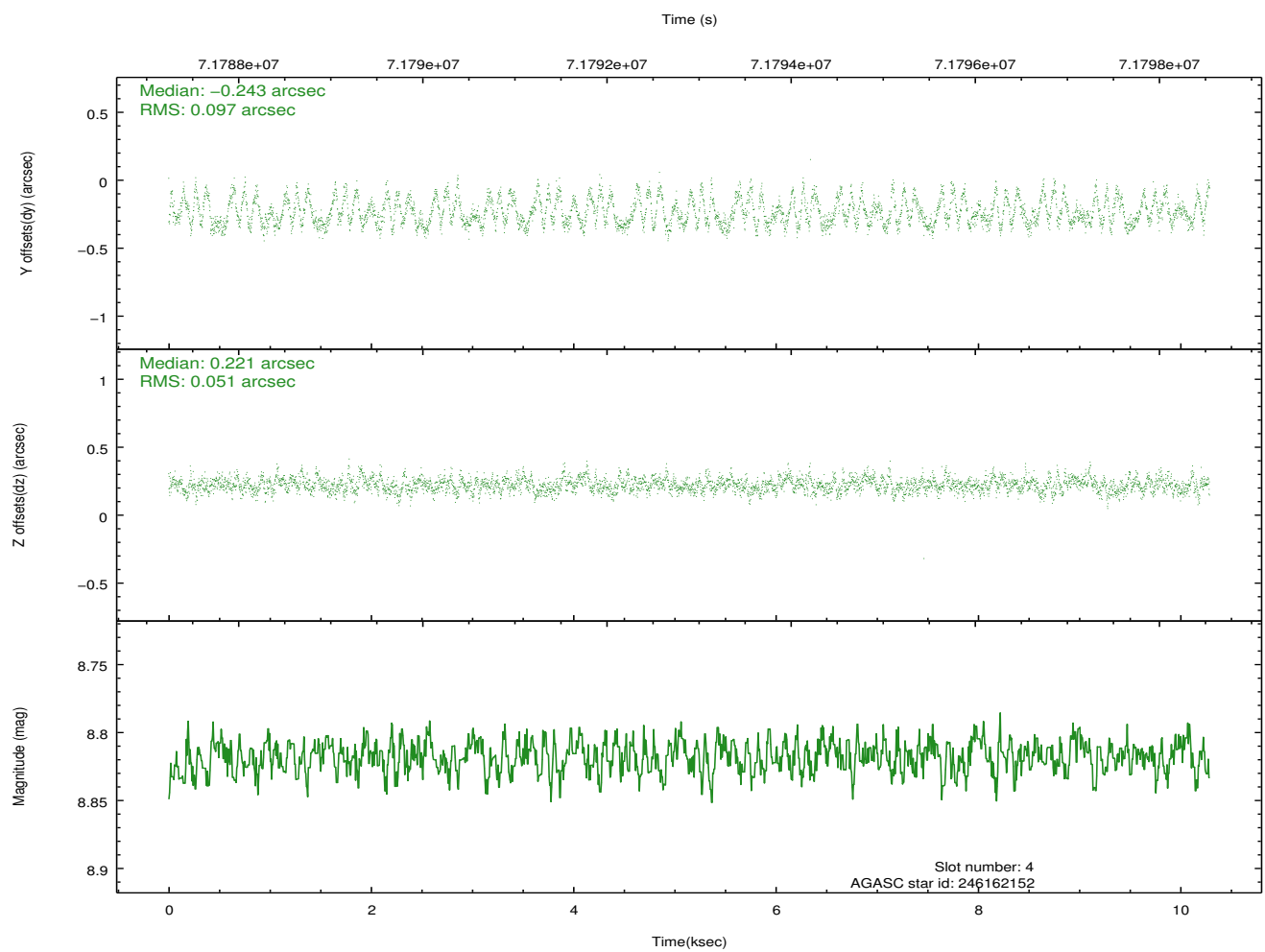
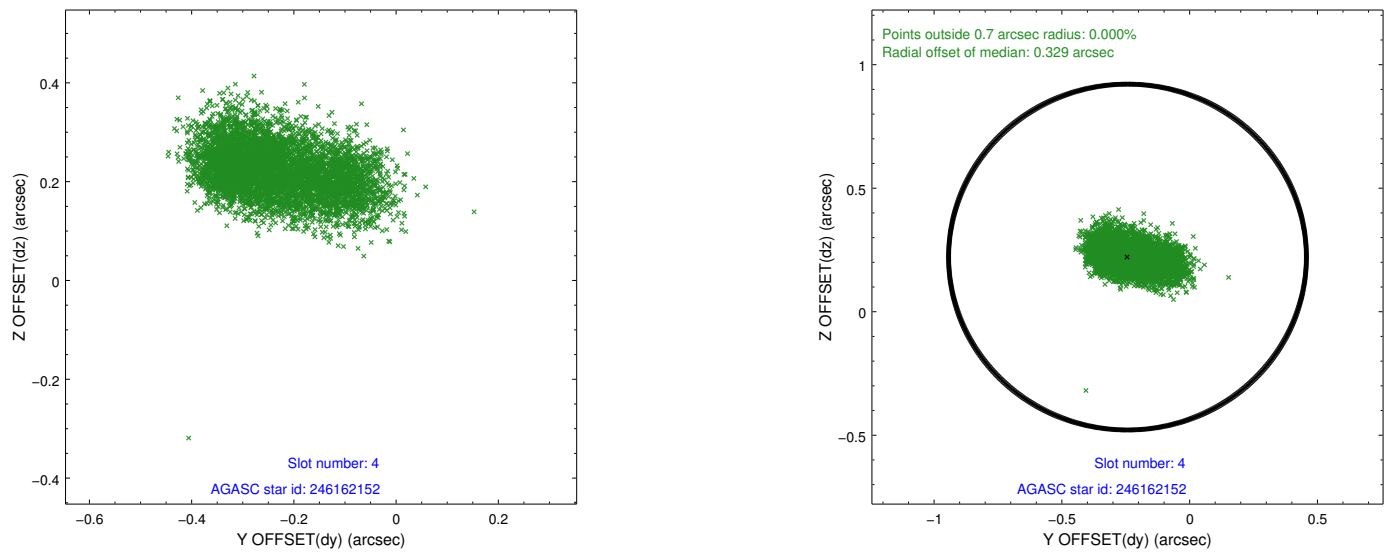
slot	status	id	mag	n_pts	med_dy	med_dz	dr1	dr2	ra	dec	mean_y	mean_z
0	FID	ACIS-I-1	7.25	2509	-0.027	0.046	0.006	0.011	0.000000	0.000000	939.20	-828.39
1	FID	ACIS-I-5	7.23	2509	-0.057	0.026	0.006	0.011	0.000000	0.000000	-1808.64	1068.83
2	FID	ACIS-I-6	7.27	2509	-0.008	-0.002	0.007	0.012	0.000000	0.000000	404.22	1713.88
3	GUIDE	173944480	7.25	5018	0.040	-0.022	0.058	0.091	94.334818	22.143978	712.66	416.67
4	GUIDE	246162152	8.82	5018	-0.243	0.221	0.117	0.190	94.893789	22.829873	-1824.40	2182.95
5	GUIDE	173939728	9.10	5010	0.147	-0.002	0.073	0.122	94.298523	22.069399	984.98	305.64
6	GUIDE	173806192	9.35	5016	0.040	-0.131	0.111	0.177	93.658163	22.115534	890.11	-1835.26
7	GUIDE	173806160	9.53	5017	0.004	-0.068	0.102	0.164	93.864592	22.452077	-342.68	-1186.64

2.4 Star Slots

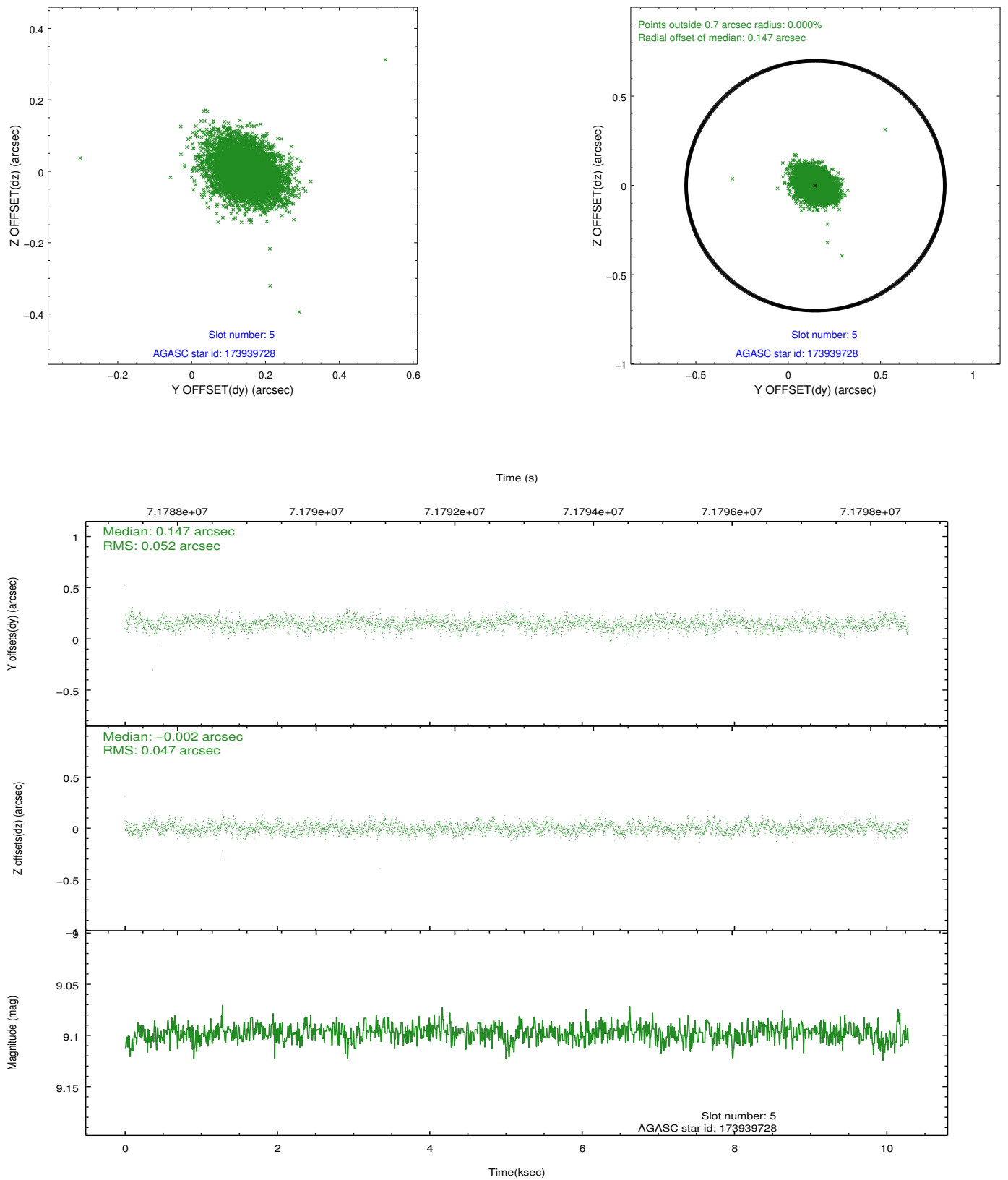
2.4.1 Slot 3



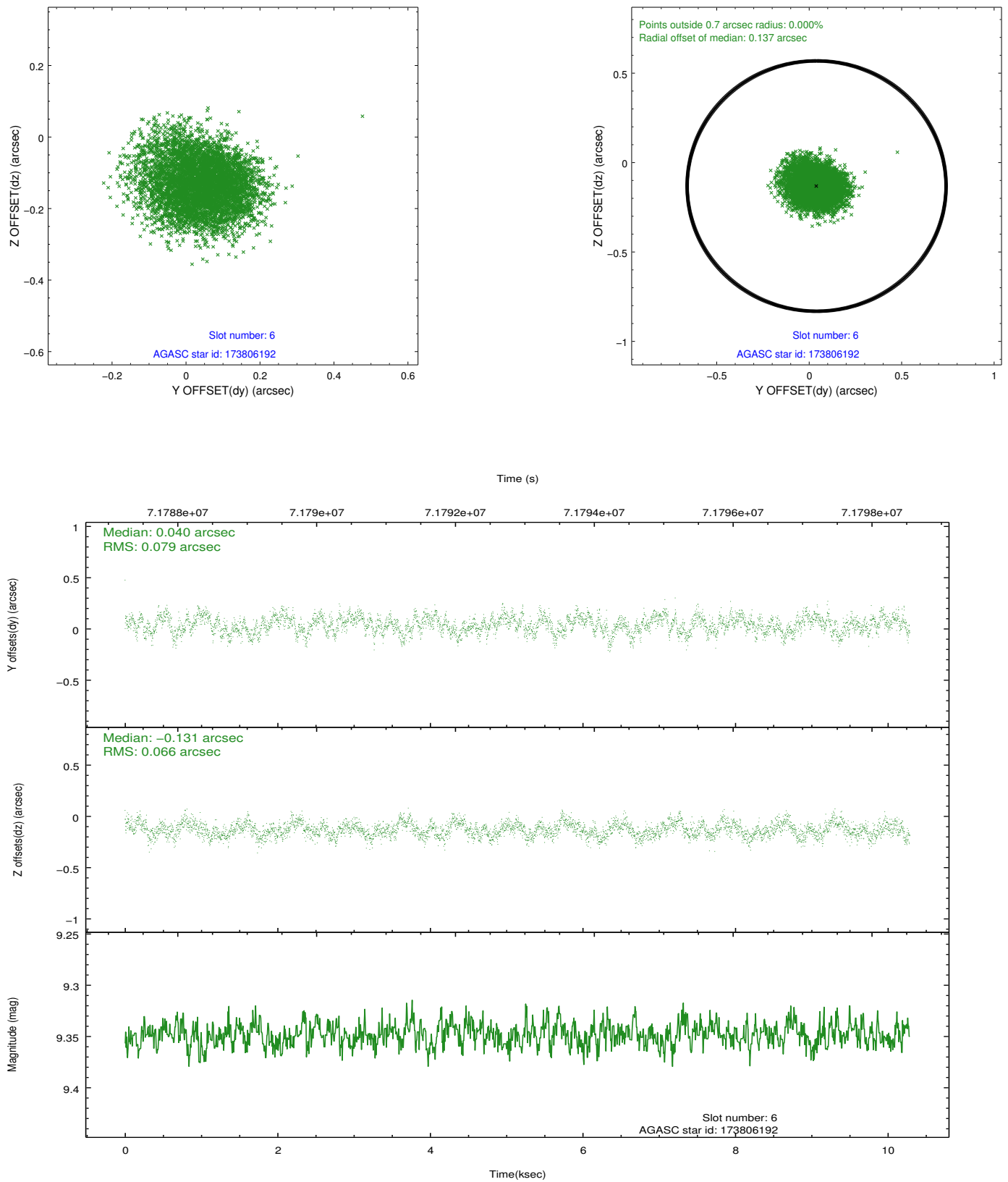
2.4.2 Slot 4



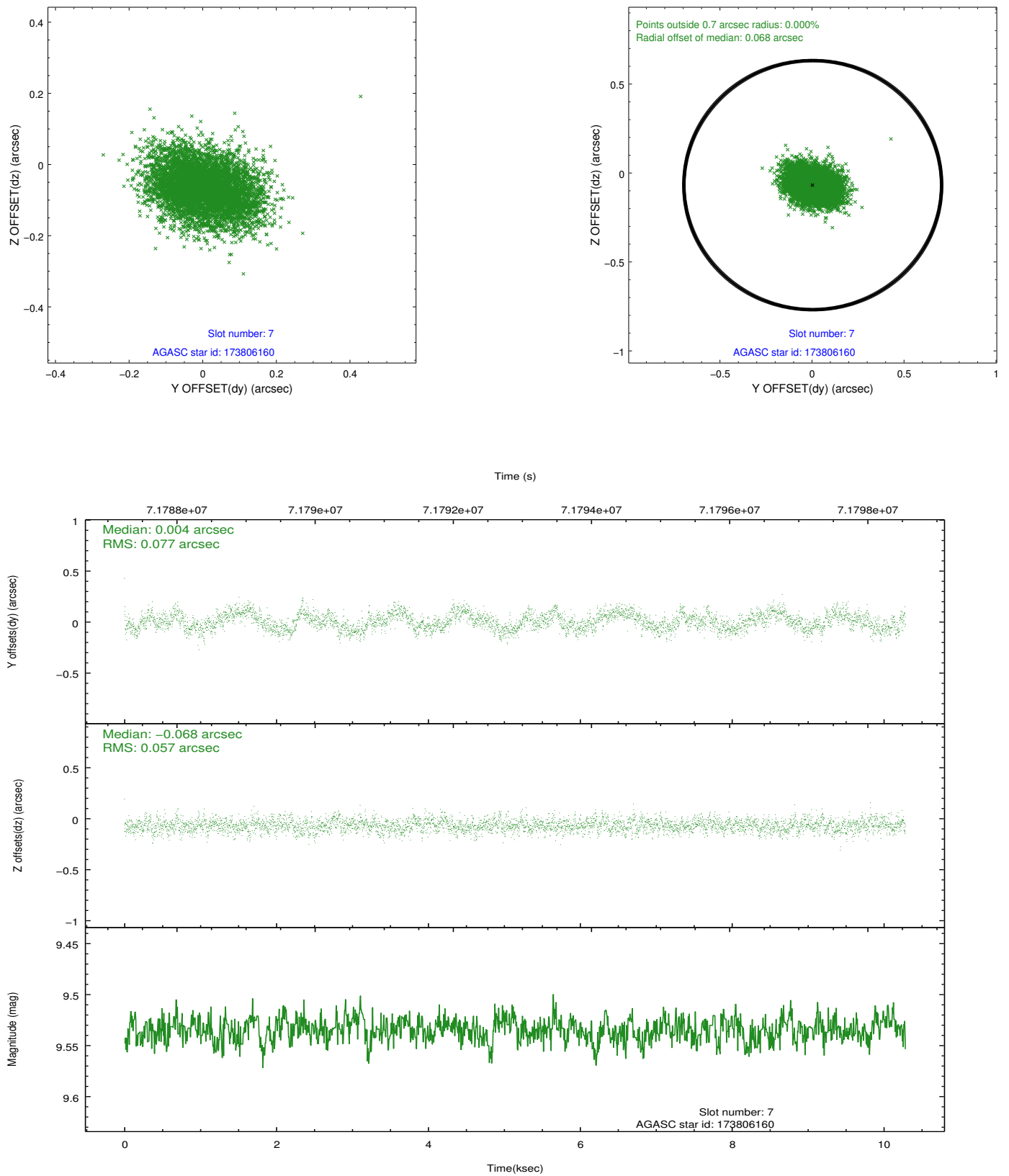
2.4.3 Slot 5



2.4.4 Slot 6

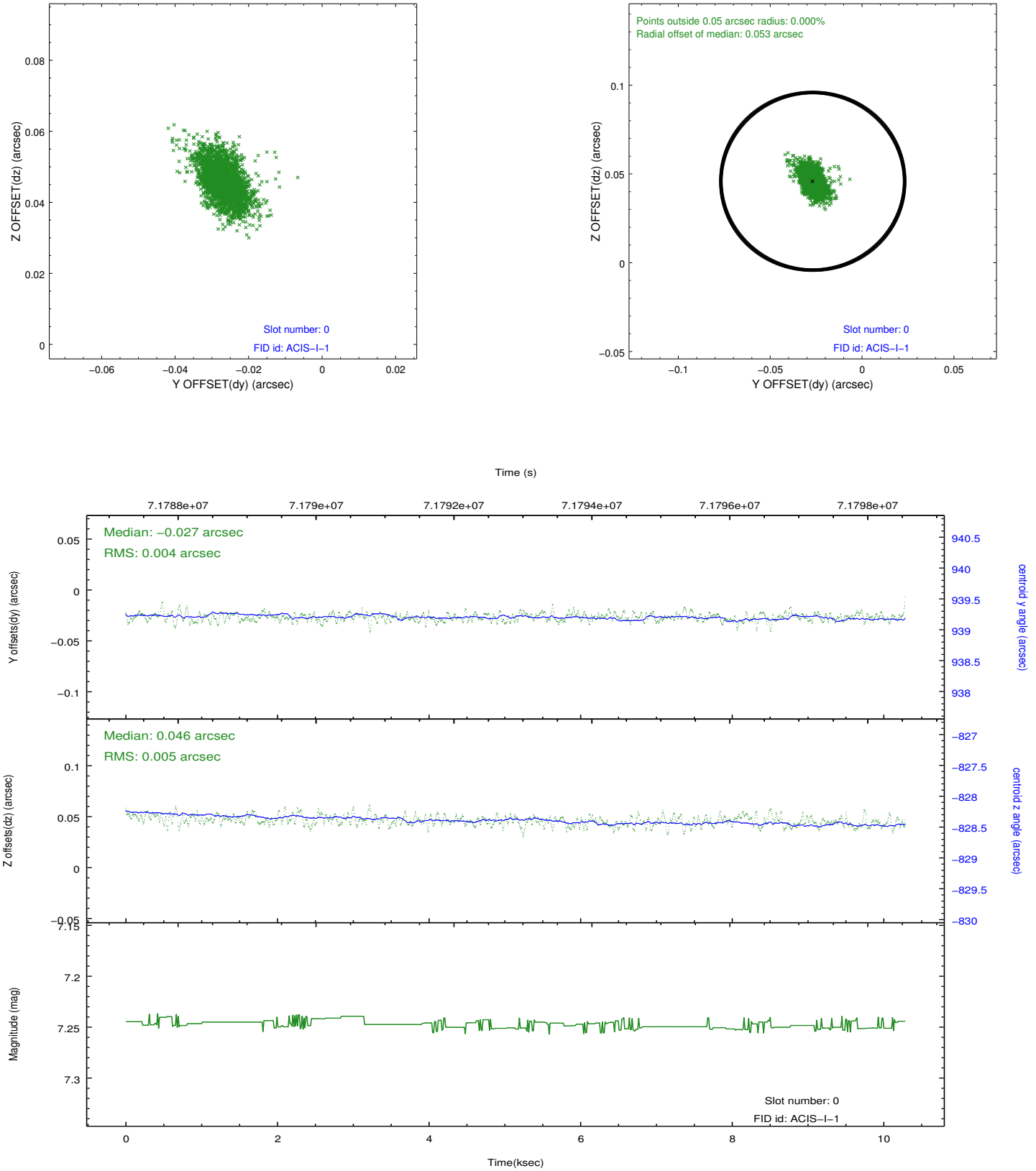


2.4.5 Slot 7

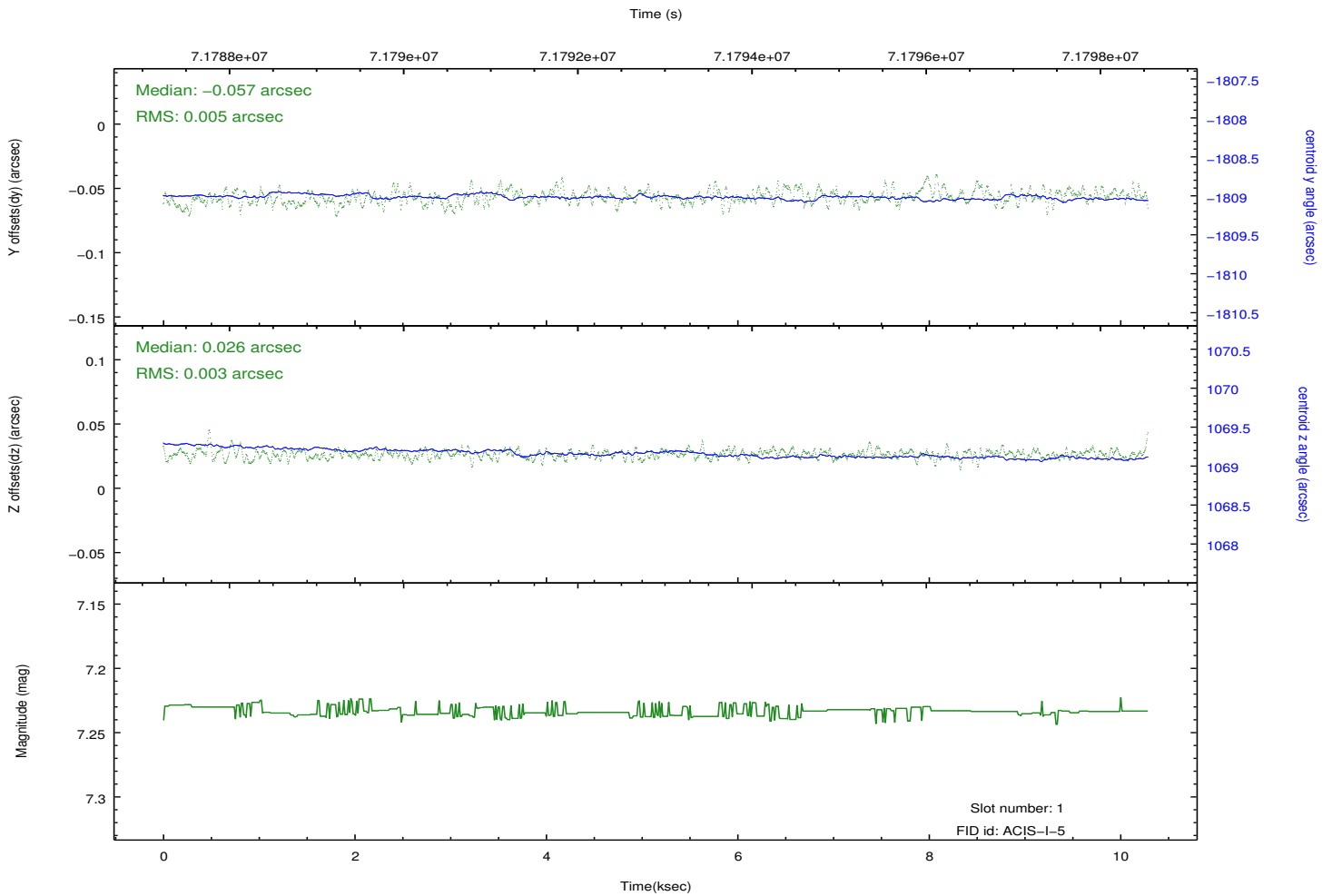
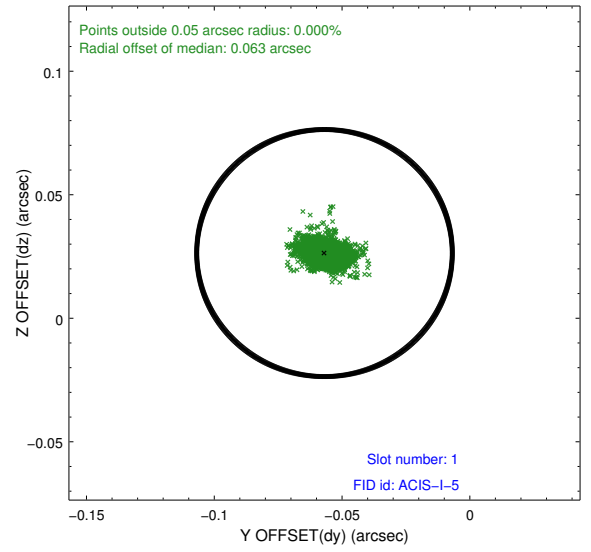
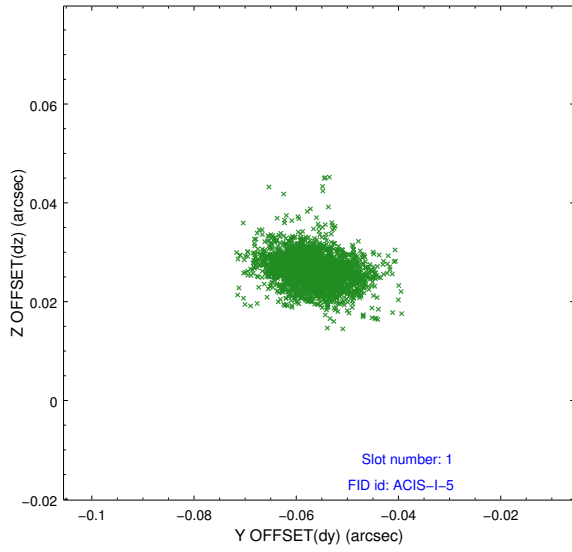


2.5 FID Slots

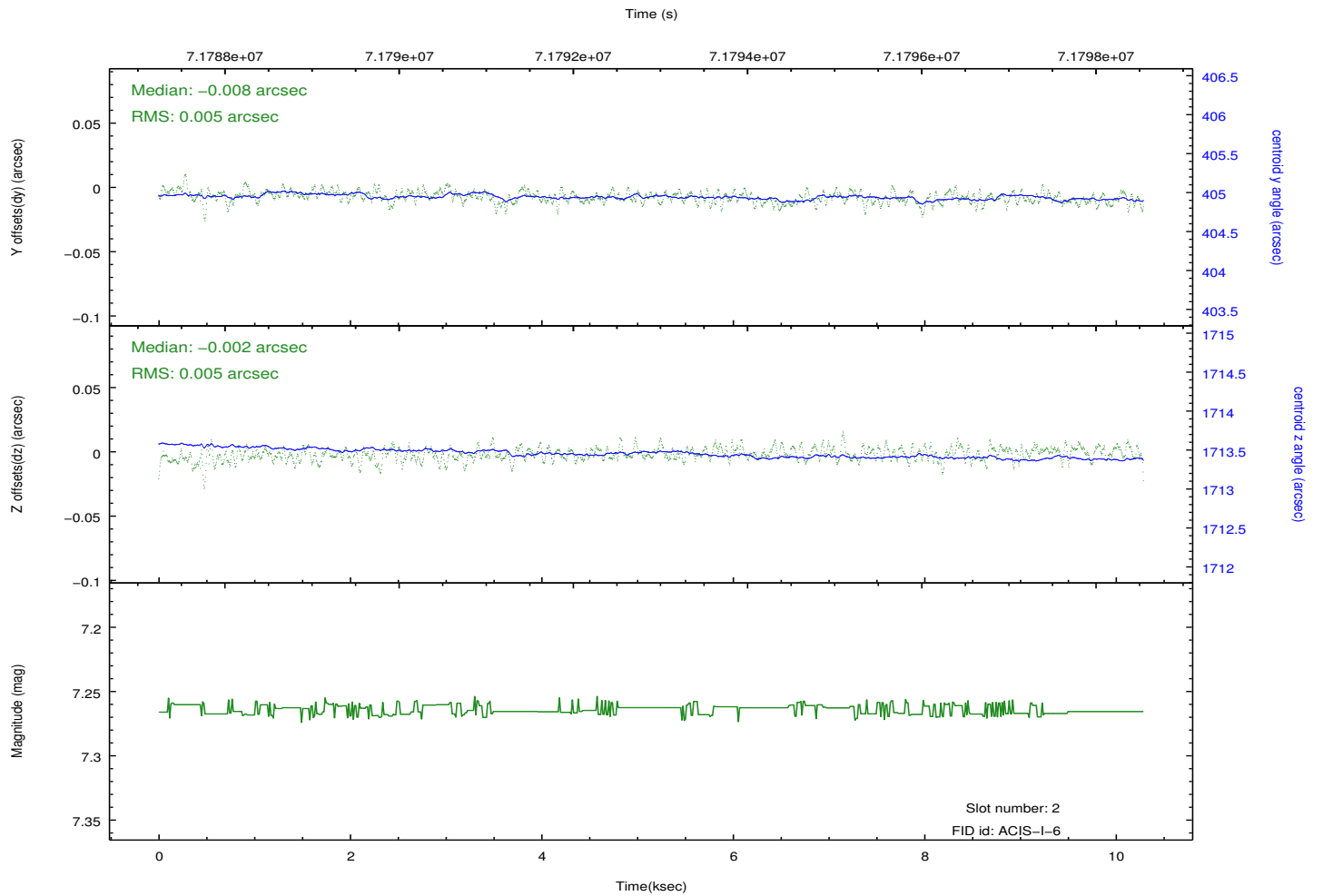
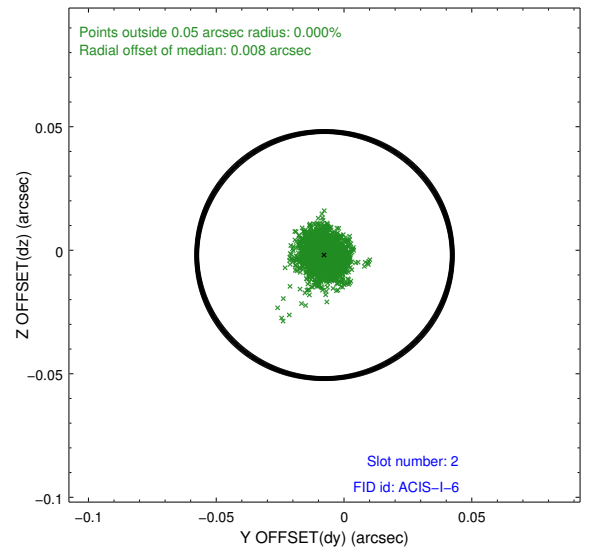
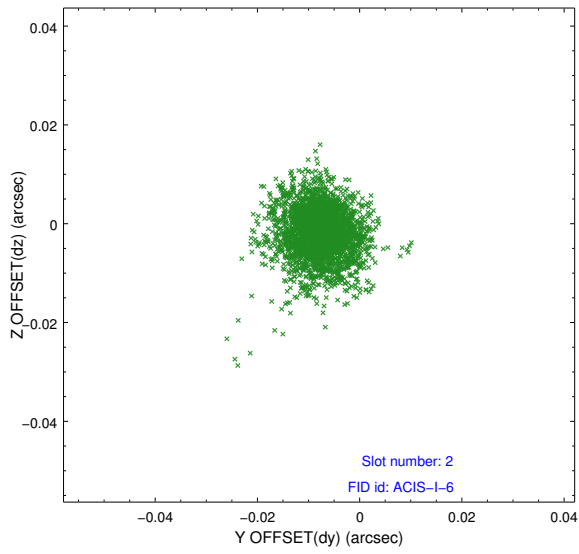
2.5.1 Slot 0



2.5.2 Slot 1



2.5.3 Slot 2



A Summary

A.1 Status

V&V Scientist	Jen Lauer
V&V Date (YYYY-MM-DD)	2012.08.28
V&V Edition	1
V&V Disposition and Status	OK
V&V Charge Time	9.715

A.2 Comments

Roll constraint met.