

V&V Reference Report

L2 ASCDS Version : 8.4.4

Observation 7750 - L2 Version 2
Chandra X-Ray Center

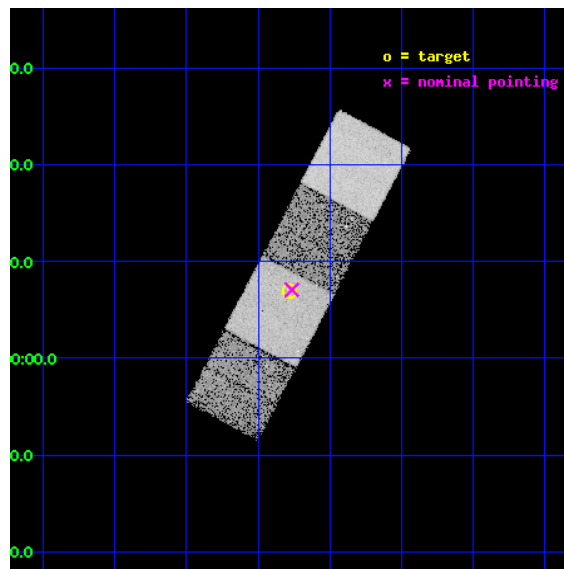
L2 Processing Date : Apr 26 2012

Contents

1	Front	2
2	OBI	3
2.1	OBI	3
2.1.1	Images	3
2.1.2	Bias	3
2.1.3	Parameters	4
2.1.4	Events	4
2.2	Compared Parameters	5
2.3	Aspect	6
2.4	Star Slots	9
2.4.1	Slot 3	9
2.4.2	Slot 4	10
2.4.3	Slot 5	11
2.4.4	Slot 6	12
2.4.5	Slot 7	13
2.5	FID Slots	14
2.5.1	Slot 0	14
2.5.2	Slot 1	15
2.5.3	Slot 2	16
A	Summary	17
A.1	Status	17
A.2	Comments	17

1 Front

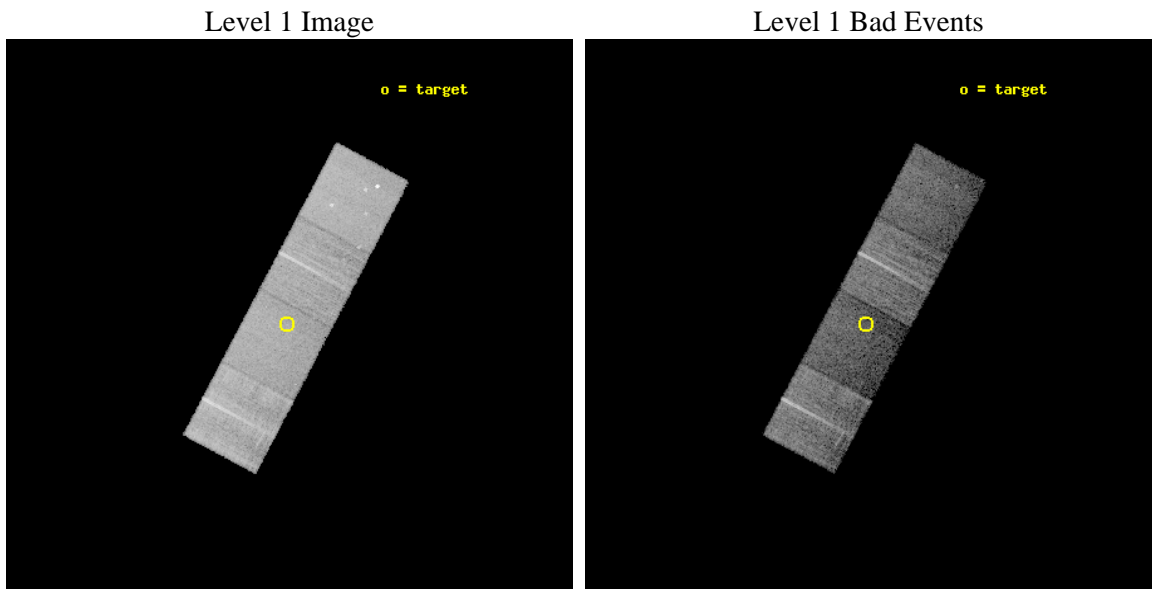
seq_num	701418	Sequence number
obs_id	7750	Observation id
title	Probing heavy obscuration in optically selected Type 2 quasar candidates	Proposal title
observer	Dr Cristian Vignali	Principal investigator
object	SDSS J015716.92-005304.8	Source name
dtcycle	0	
cycle	P	events from which exps? Prim/Second/Both
ra_targ	29.320417	Observer's specified target RA [deg]
dec_targ	-0.884667	Observer's specified target Dec [deg]
ra_nom	29.316260150355	Nominal RA [deg]
dec_nom	-0.88218817170975	Nominal Dec [deg]
roll_nom	117.90836505808	Nominal Roll [deg]
revision	2	Processing version of data
ontime	9743.300074935	Sum of GTIs [s]
livetime	9615.9966865428	Livetime [s]
ontime5	9743.300074935	Sum of GTIs [s]
ontime6	9743.300074935	Sum of GTIs [s]
ontime7	9743.300074935	Sum of GTIs [s]
ontime8	9743.300074935	Sum of GTIs [s]
l2events	91296	Number of level 2 events



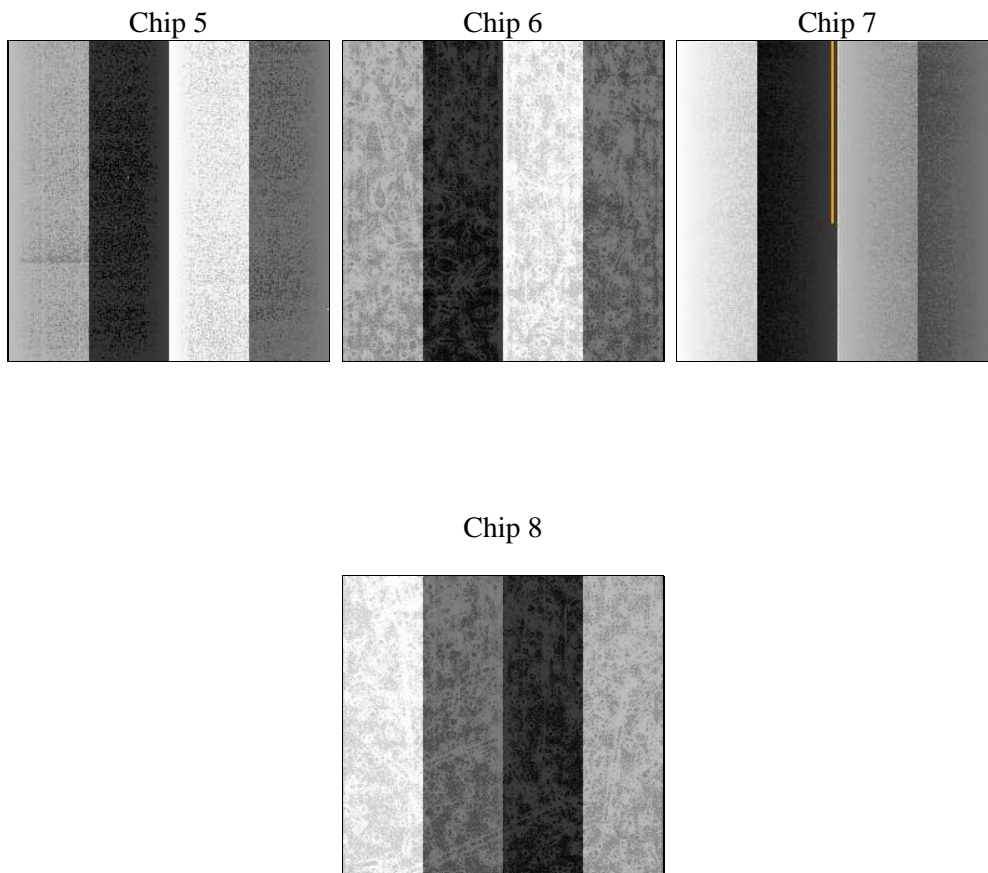
2 OBI

2.1 OBI

2.1.1 Images



2.1.2 Bias



2.1.3 Parameters

obi_num	0	Obi number	sched_exp_time	9700.000000	[s] Scheduled observation exposure time
ascdsver	8.4.4	Processing system revision	ontime	9743.300074935	Sum of GTIs [s]
caldsver	4.4.9	 	ontime5	9743.300074935	Sum of GTIs [s]
date	2012-04-26T13:22:53	Date and time of file creation	ontime6	9743.300074935	Sum of GTIs [s]
revision	2	Processing version of data	ontime7	9743.300074935	Sum of GTIs [s]
			ontime8	9743.300074935	Sum of GTIs [s]
			l1events	327010	Number of level 1 events

2.1.4 Events

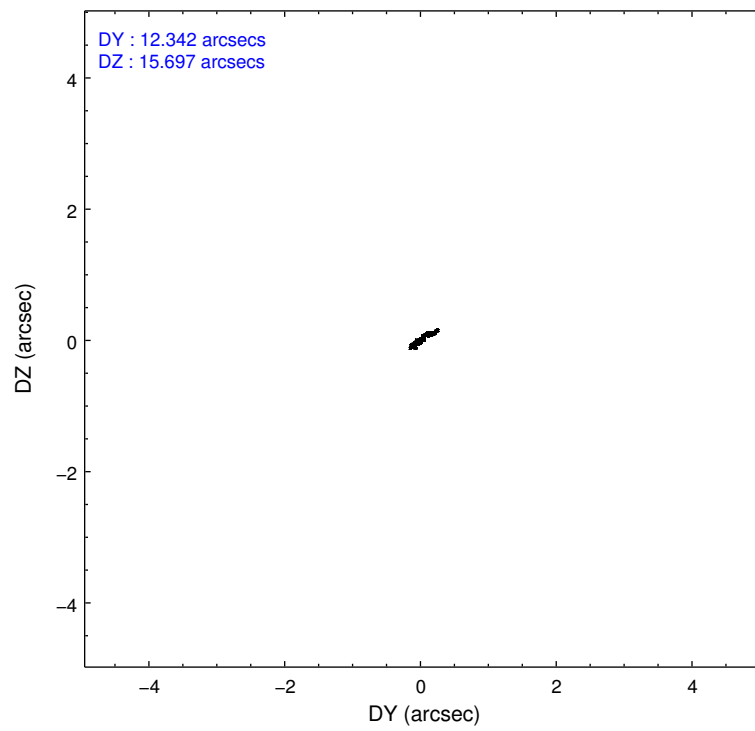
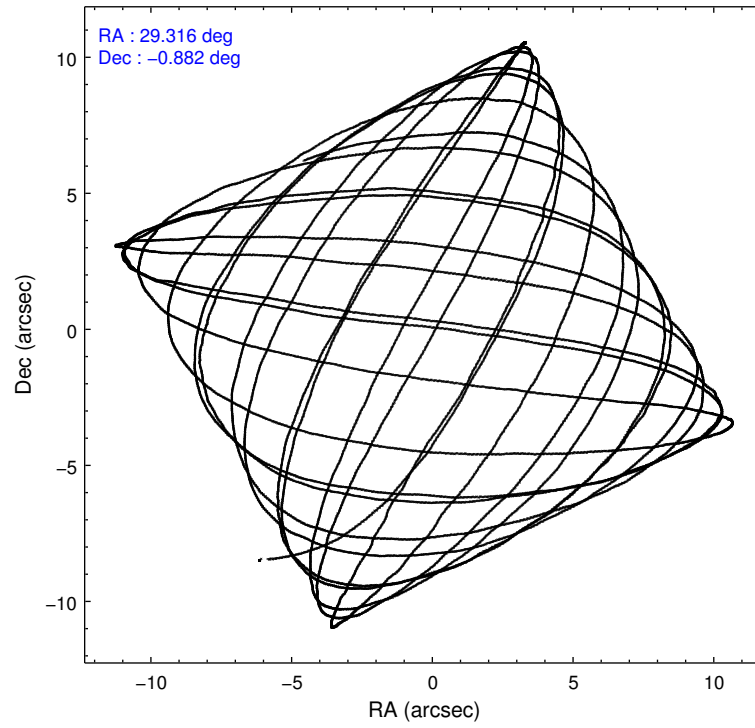
	ccd 5	ccd 6	ccd 7	ccd 8
level 1 events	91624	73869	69462	92055
rejected events	42693	66303	35635	69269
rejected %	46%	89%	51%	75%

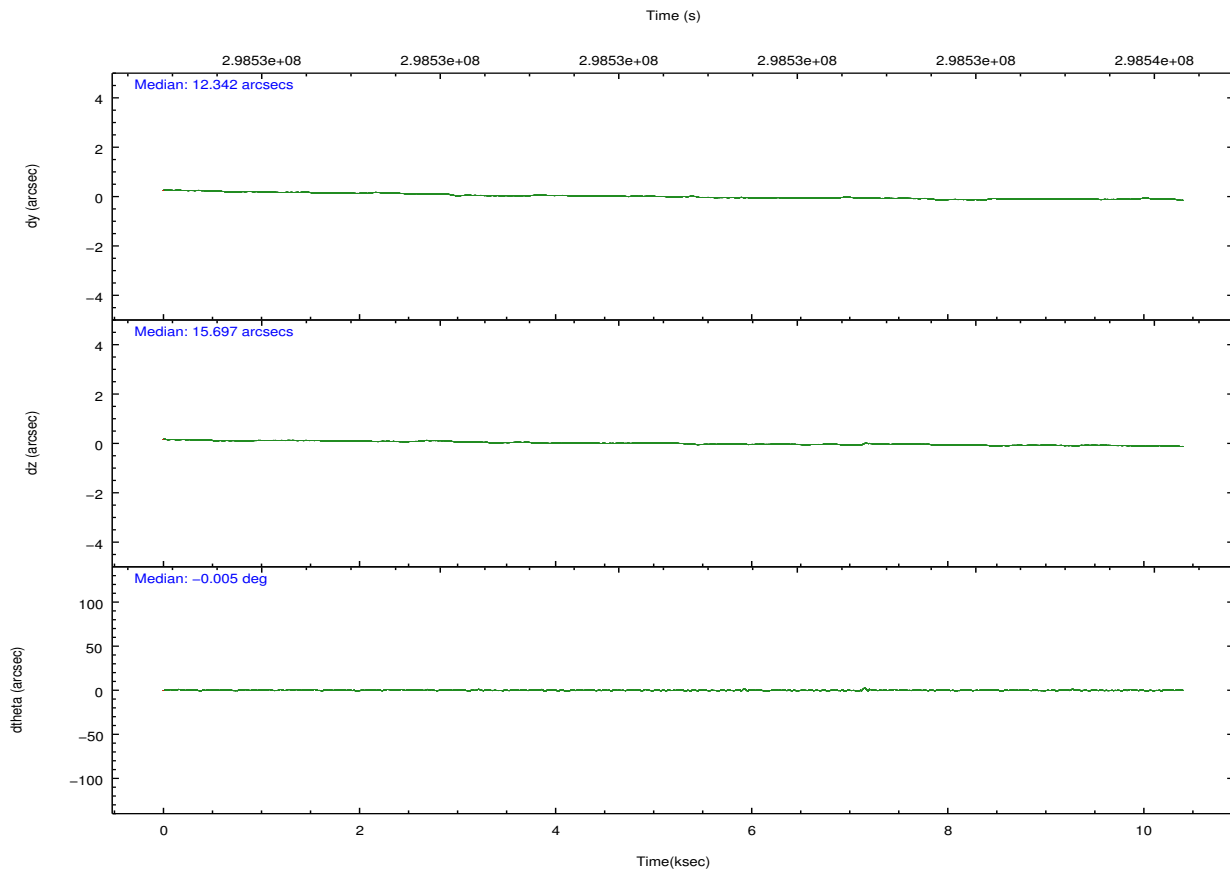
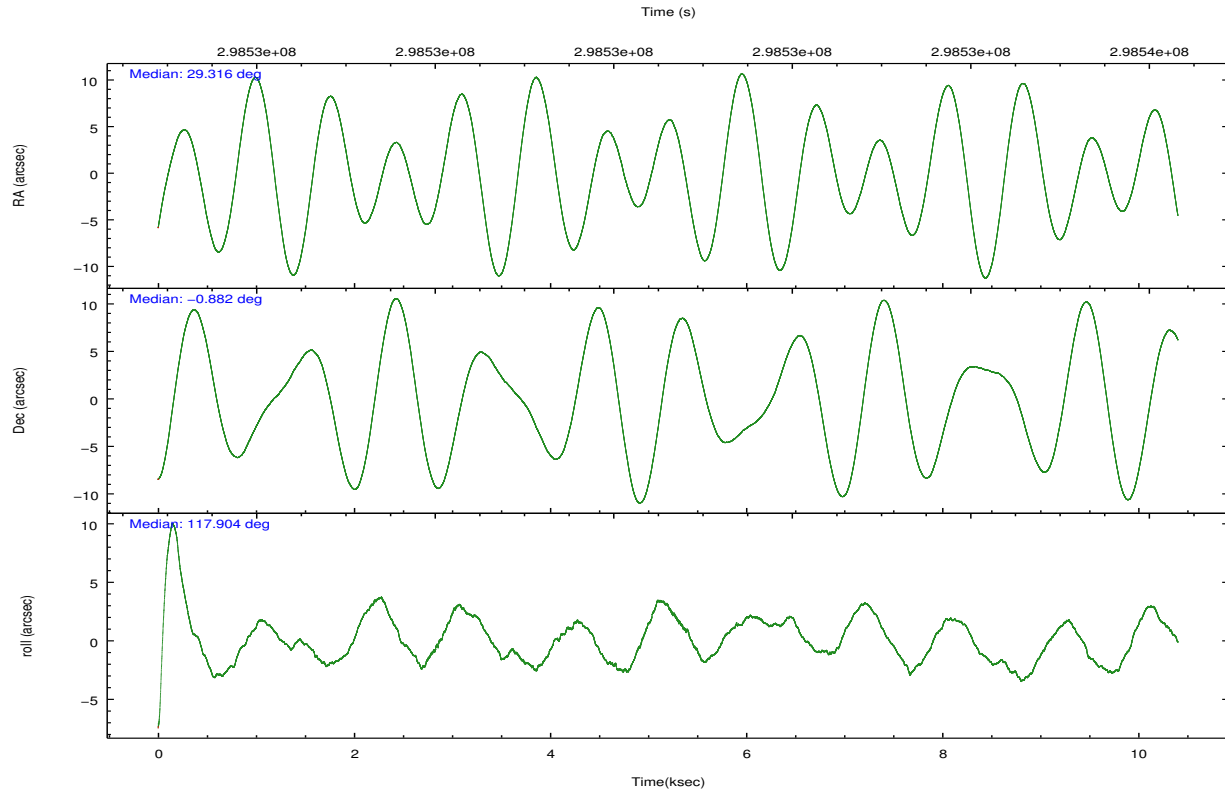
	ccd 5	ccd 6	ccd 7	ccd 8
grade 0 events	6216	2764	3443	6411
	6%	3%	4%	6%
grade 1 events	305	37	109	72
	0%	0%	0%	0%
grade 2 events	14607	1590	7132	5364
	15%	2%	10%	5%
grade 3 events	2184	893	3155	2490
	2%	1%	4%	2%
grade 4 events	2098	813	3127	2287
	2%	1%	4%	2%
grade 5 events	7488	2534	7512	3885
	8%	3%	10%	4%
grade 6 events	23861	1512	16993	6240
	26%	2%	24%	6%
grade 7 events	34865	63726	27991	65306
	38%	86%	40%	70%

2.2 Compared Parameters

Parameter	Planned	Actual	Parameter	Planned	Actual
Instrument	ACIS	ACIS	Obspar format version number	7	7
Detector	ACIS-5678	ACIS-5678	Obspar file type	PREDICTED	ACTUAL
Grating	NONE	NONE	Obspar update status	NONE	UPDATED
Data mode	VFAINT	VFAINT	Number of optional ACIS chips dropped	0	0
Observation mode	POINTING	POINTING	On-chip summing requested	N	N
[deg] Pointing RA	29.339601	29.31626015035458	Subarray requested	NONE	NONE
[deg] Pointing Dec	-0.896415	-0.8821881717097522	Alternating exposures requested	N	N
[deg] Pointing Roll	117.752117	117.908365058078	[s] Primary exposure time	0.000000	3.1
[mm] SIM focus pos	-0.684267	-0.6828225247311905			
[mm] SIM defocus	0	0.001444936568705701			
[mm] SIM translation stage pos	-190.132523	-190.1425803651734			
[mm] SIM translation stage offset	0	0.01005778216563158			
[s] Observation start time (MET)	298526107.184000	298524980.44669			
Observation start date	2007-06-18T03:54:02	2007-06-18T03:36:20			
[s] Observation end time (MET)	298535807.184000	298536495.80974			
Observation end date	2007-06-18T06:35:42	2007-06-18T06:48:15			
Read mode	TIMED	TIMED			

2.3 Aspect



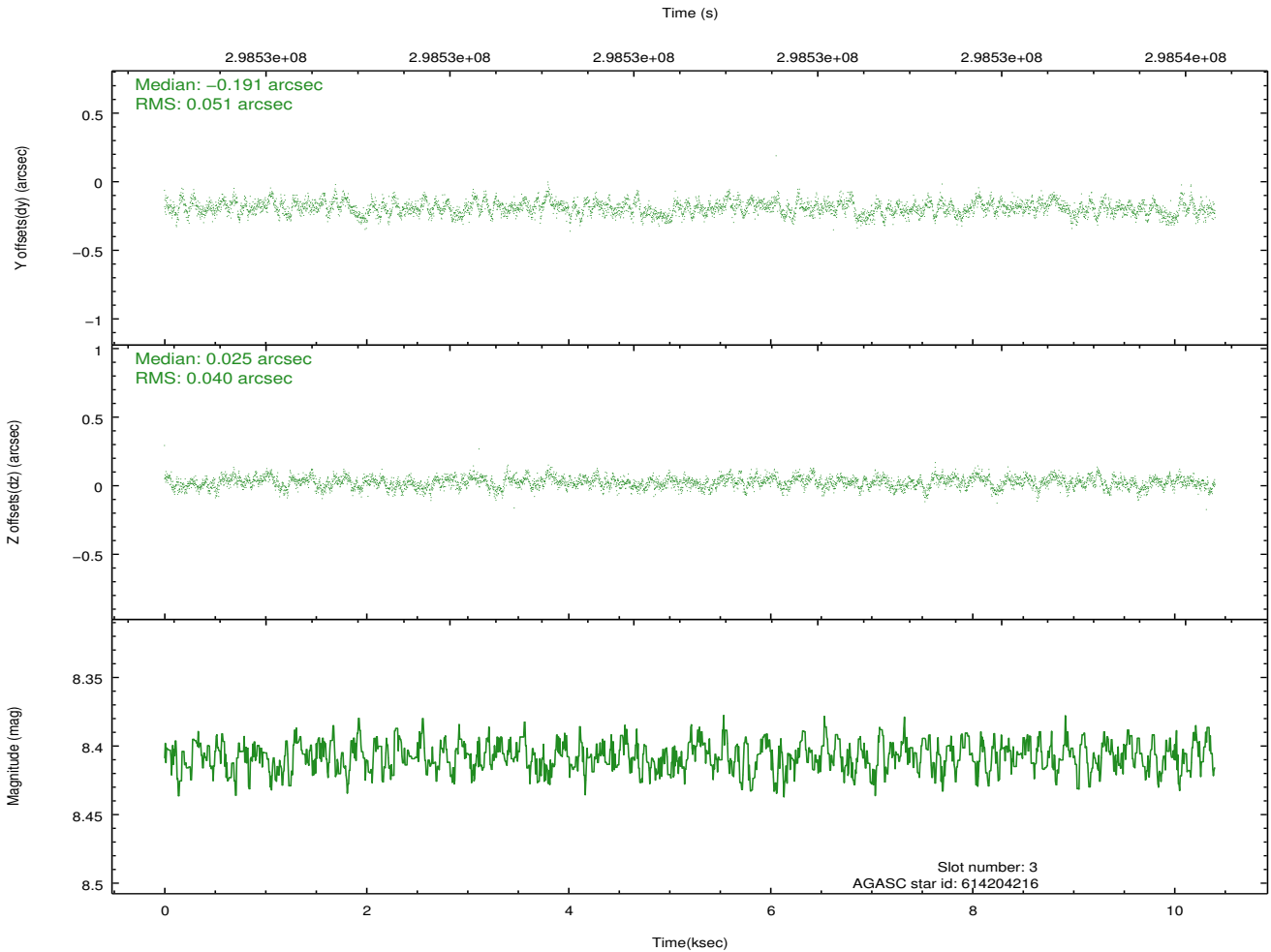
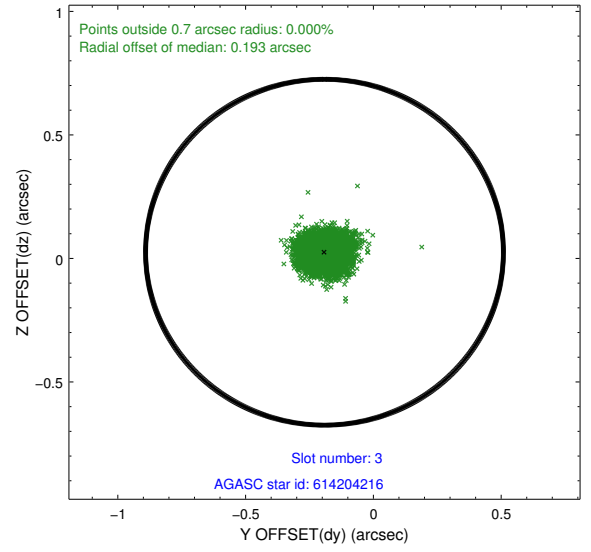
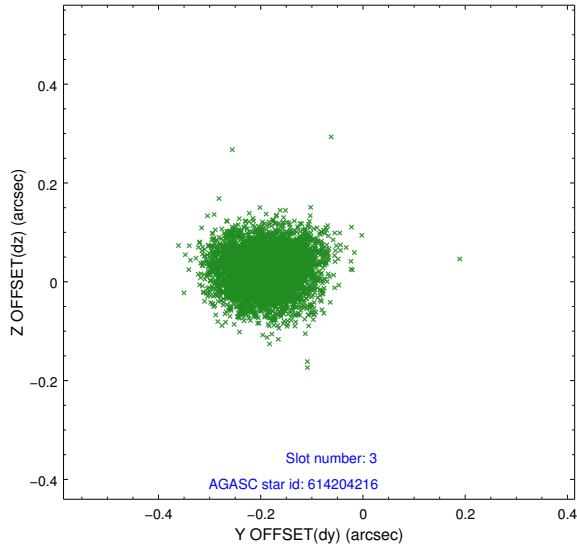


Slot Statistics

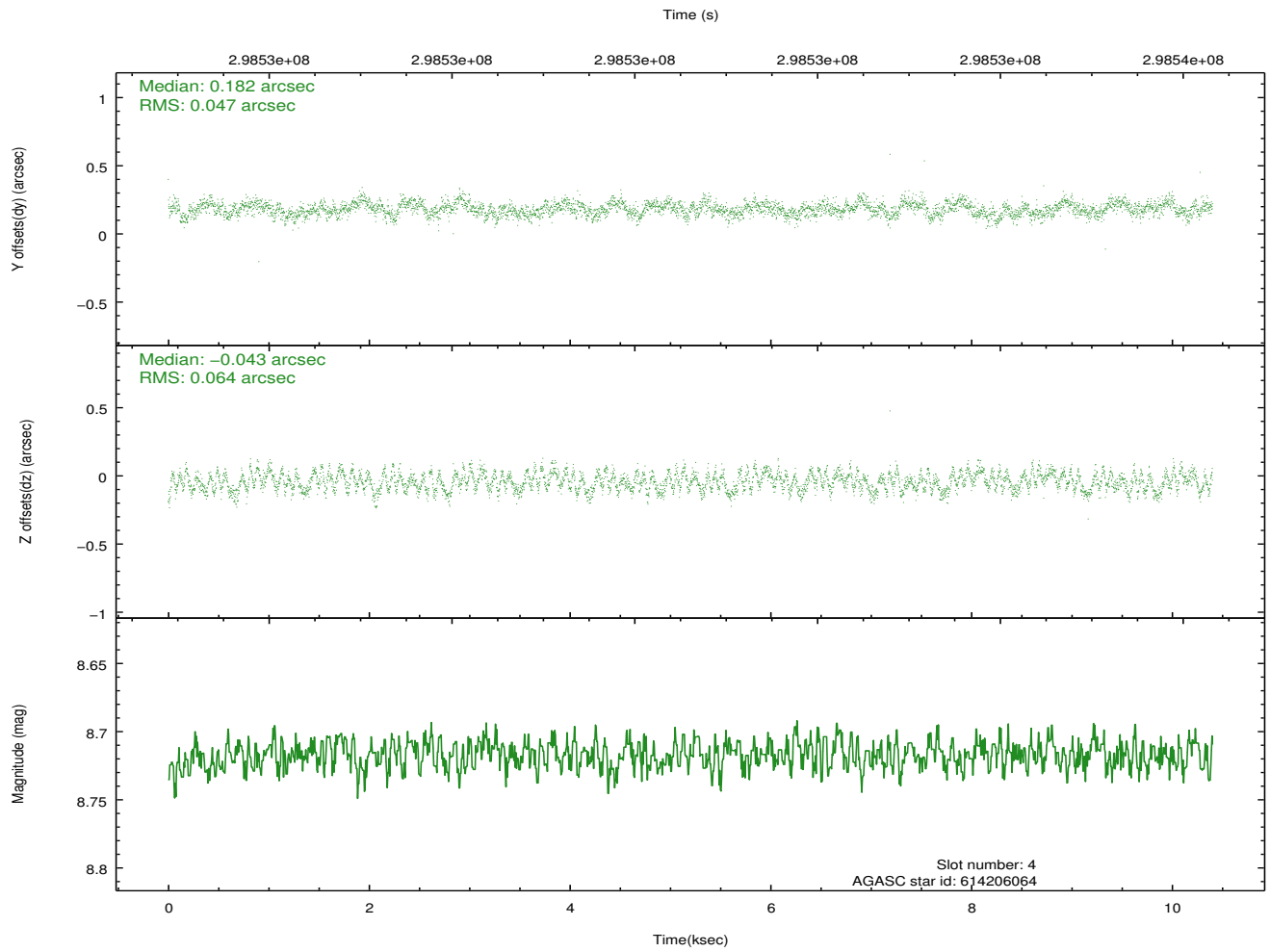
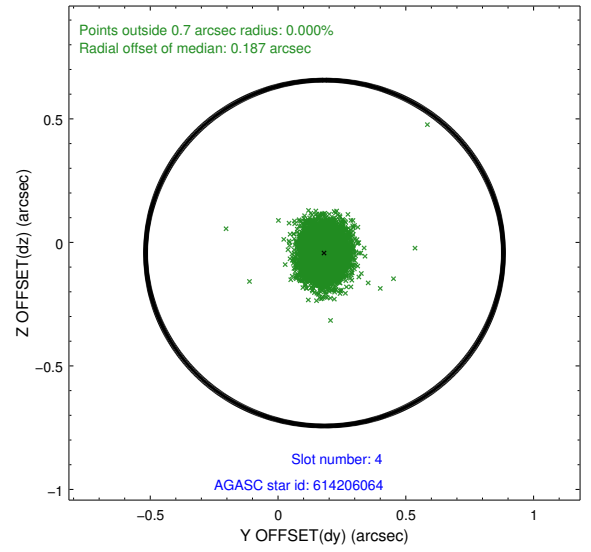
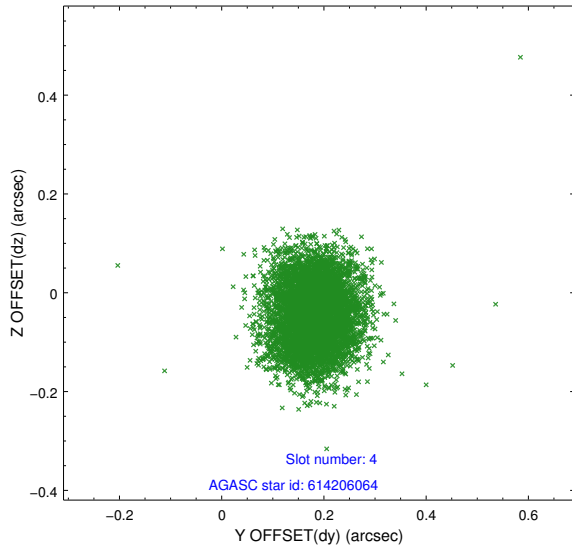
slot	status	id	mag	n_pts	med_dy	med_dz	dr1	dr2	ra	dec	mean_y	mean_z
0	FID	ACIS-S-2	7.09	2538	-0.047	-0.031	0.007	0.011	0.000000	0.000000	-765.28	-1737.09
1	FID	ACIS-S-4	7.19	2538	0.154	0.031	0.007	0.012	0.000000	0.000000	2147.94	170.97
2	FID	ACIS-S-5	7.22	2538	-0.137	0.008	0.008	0.014	0.000000	0.000000	-1817.59	165.13
3	GUIDE	614204216	8.41	5071	-0.191	0.025	0.068	0.111	29.234942	-0.240997	2263.63	-764.71
4	GUIDE	614206064	8.72	5071	0.182	-0.043	0.084	0.131	29.788440	-1.006441	-1101.91	-1245.43
5	GUIDE	614208096	9.42	5068	-0.231	-0.290	0.105	0.169	28.605478	-0.810535	1503.56	2194.76
6	GUIDE	614606264	9.45	5068	0.275	0.097	0.103	0.165	30.048555	-1.174884	-2074.76	-1790.47
7	GUIDE	614605472	9.46	5072	-0.036	0.217	0.096	0.157	30.188132	-1.121699	-2140.35	-2324.98

2.4 Star Slots

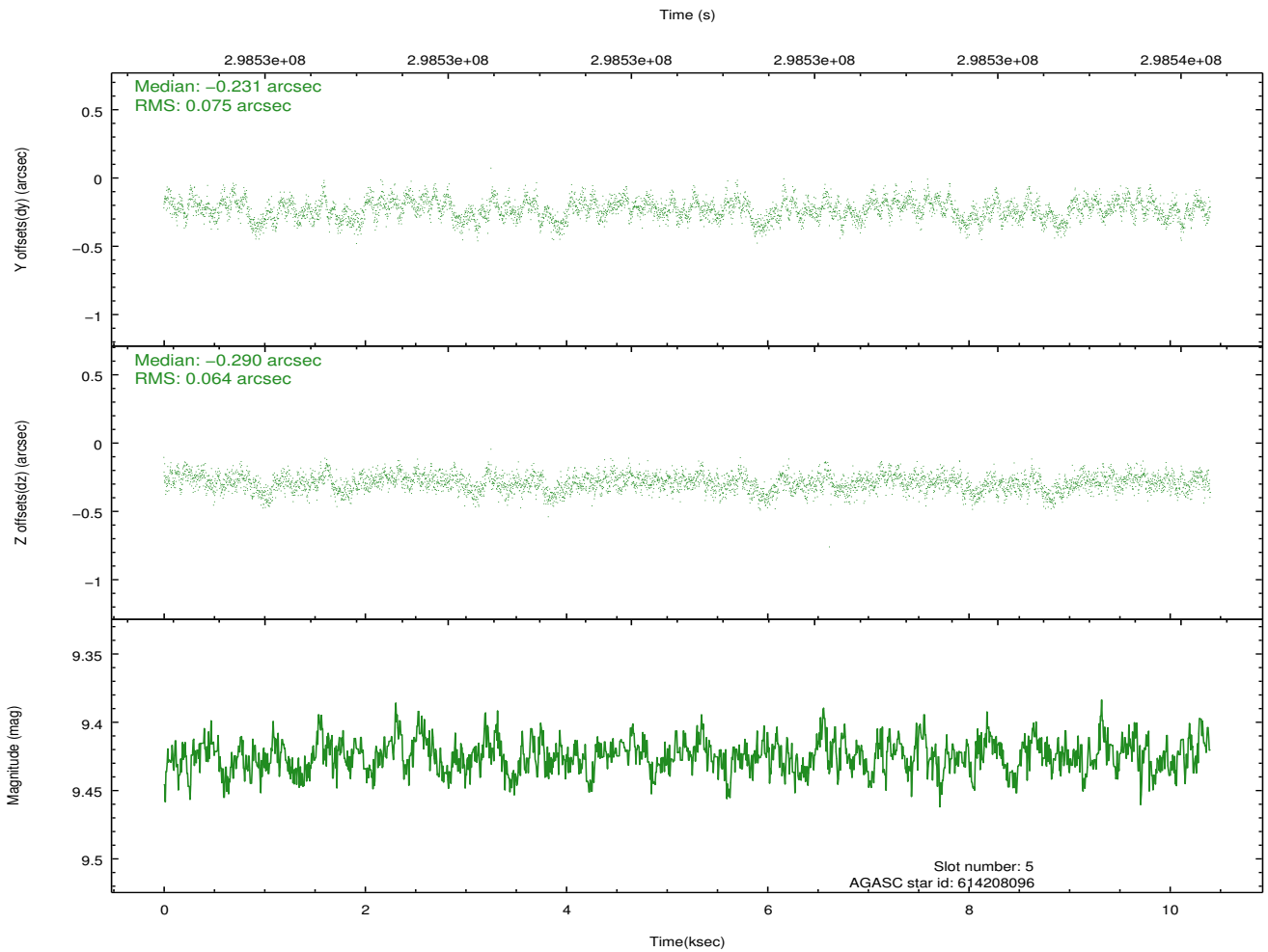
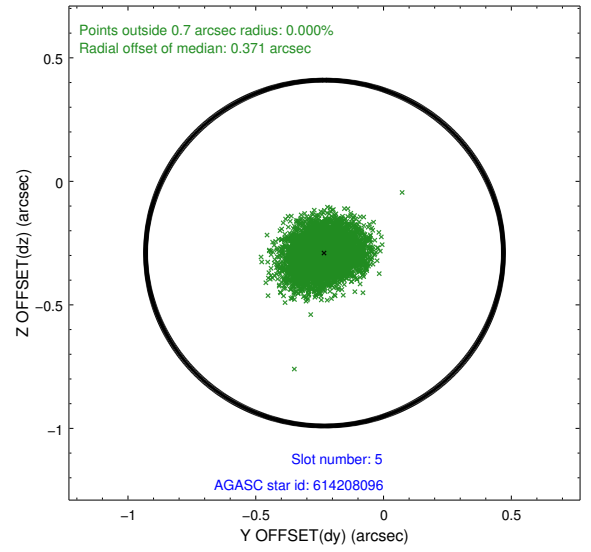
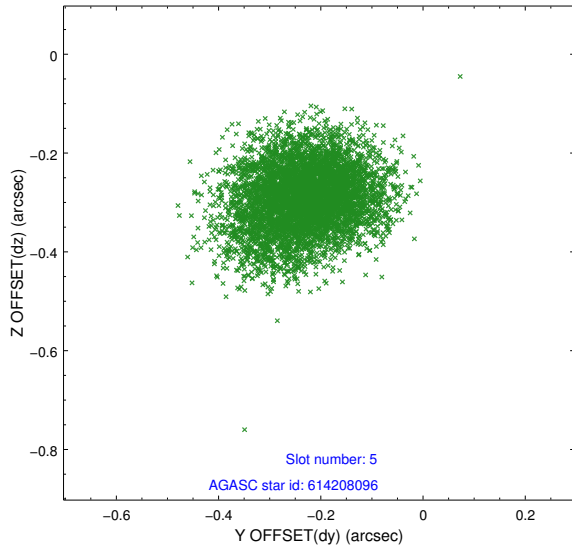
2.4.1 Slot 3



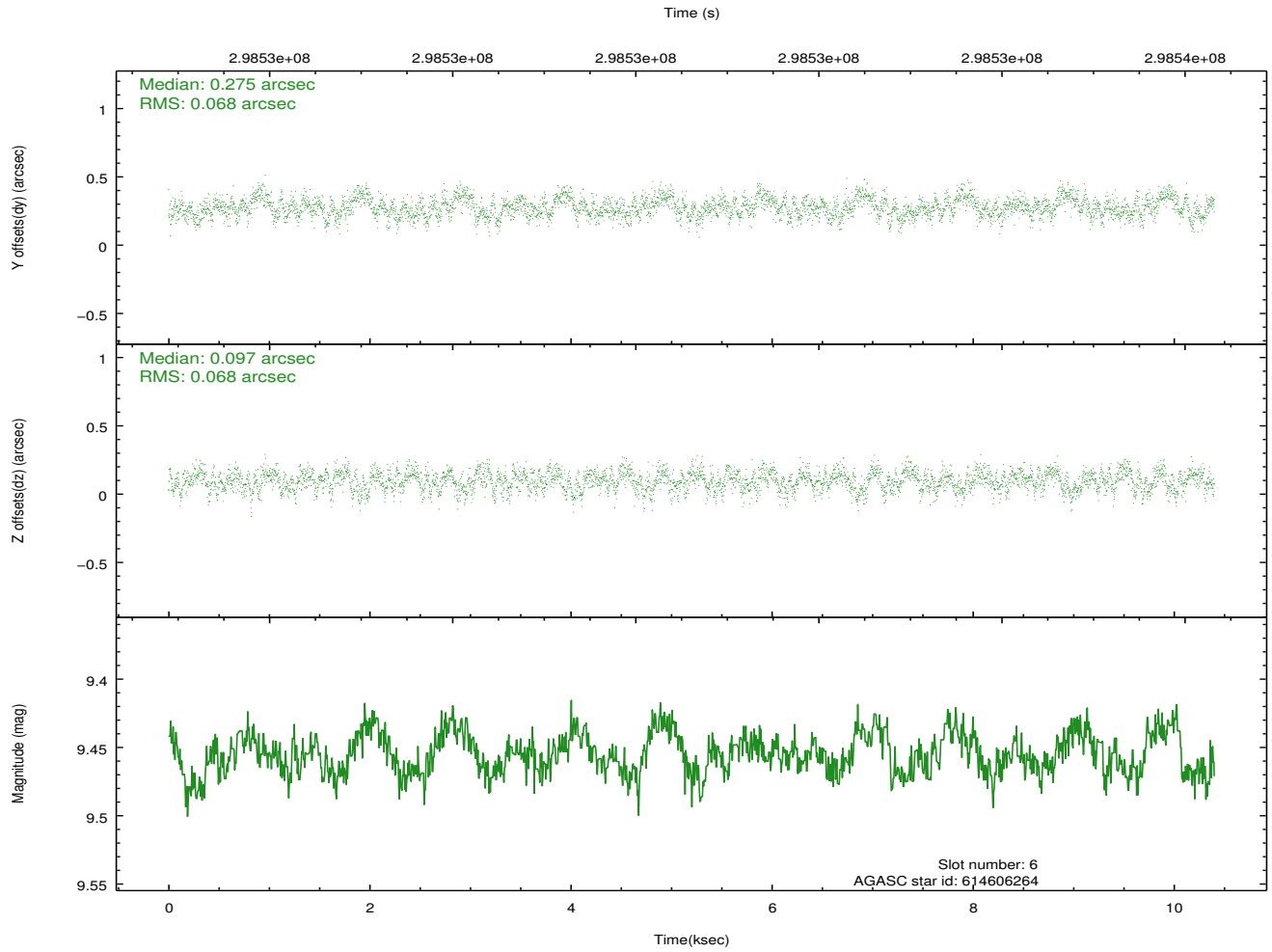
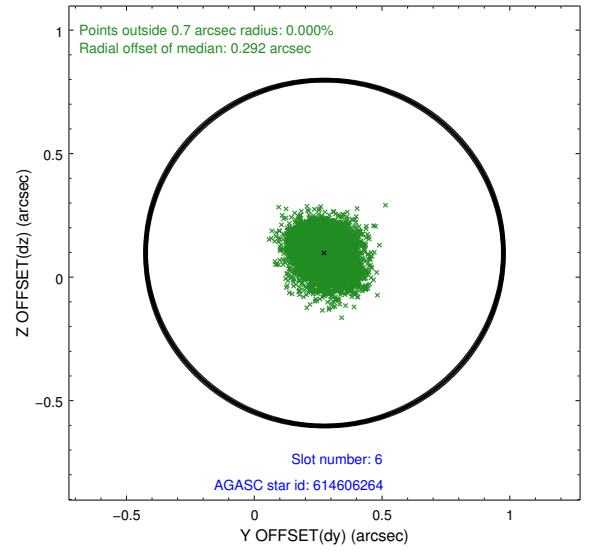
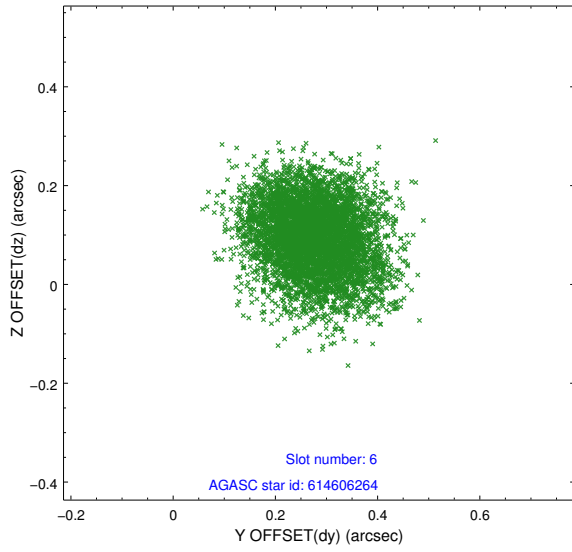
2.4.2 Slot 4



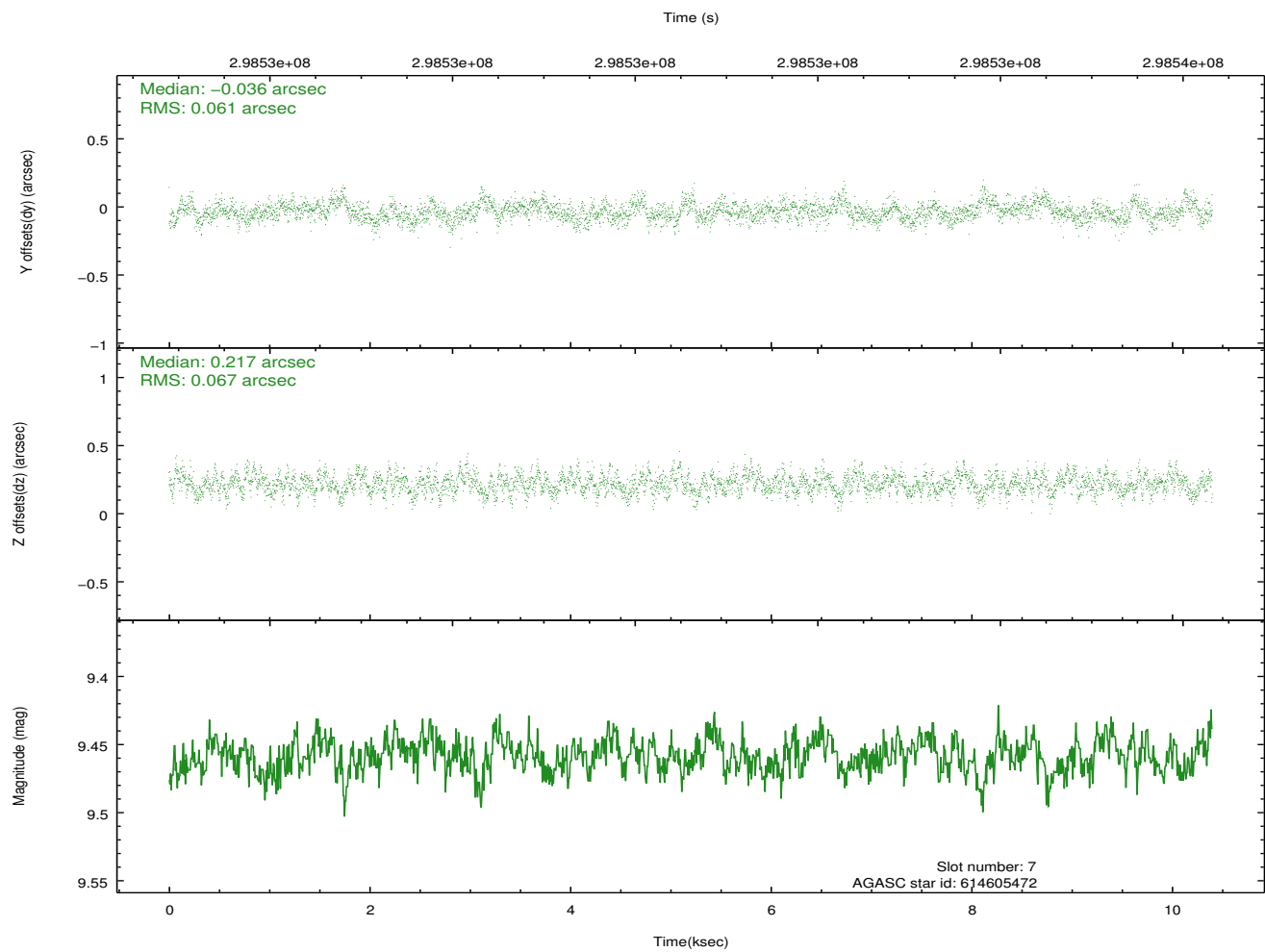
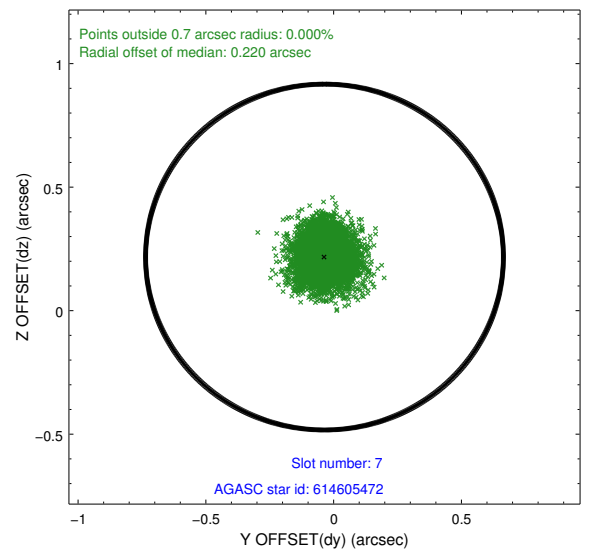
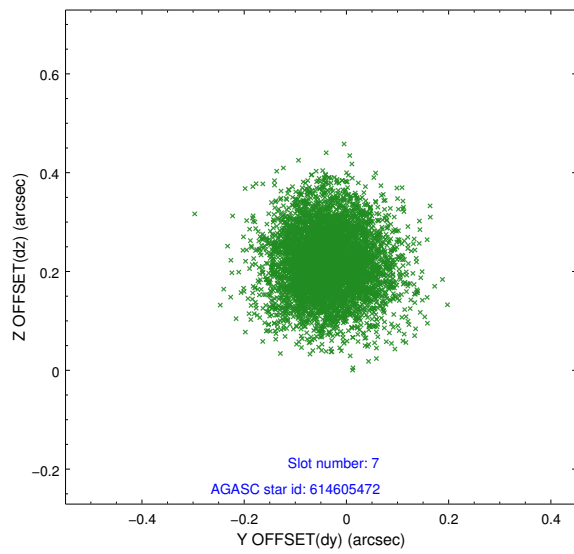
2.4.3 Slot 5



2.4.4 Slot 6

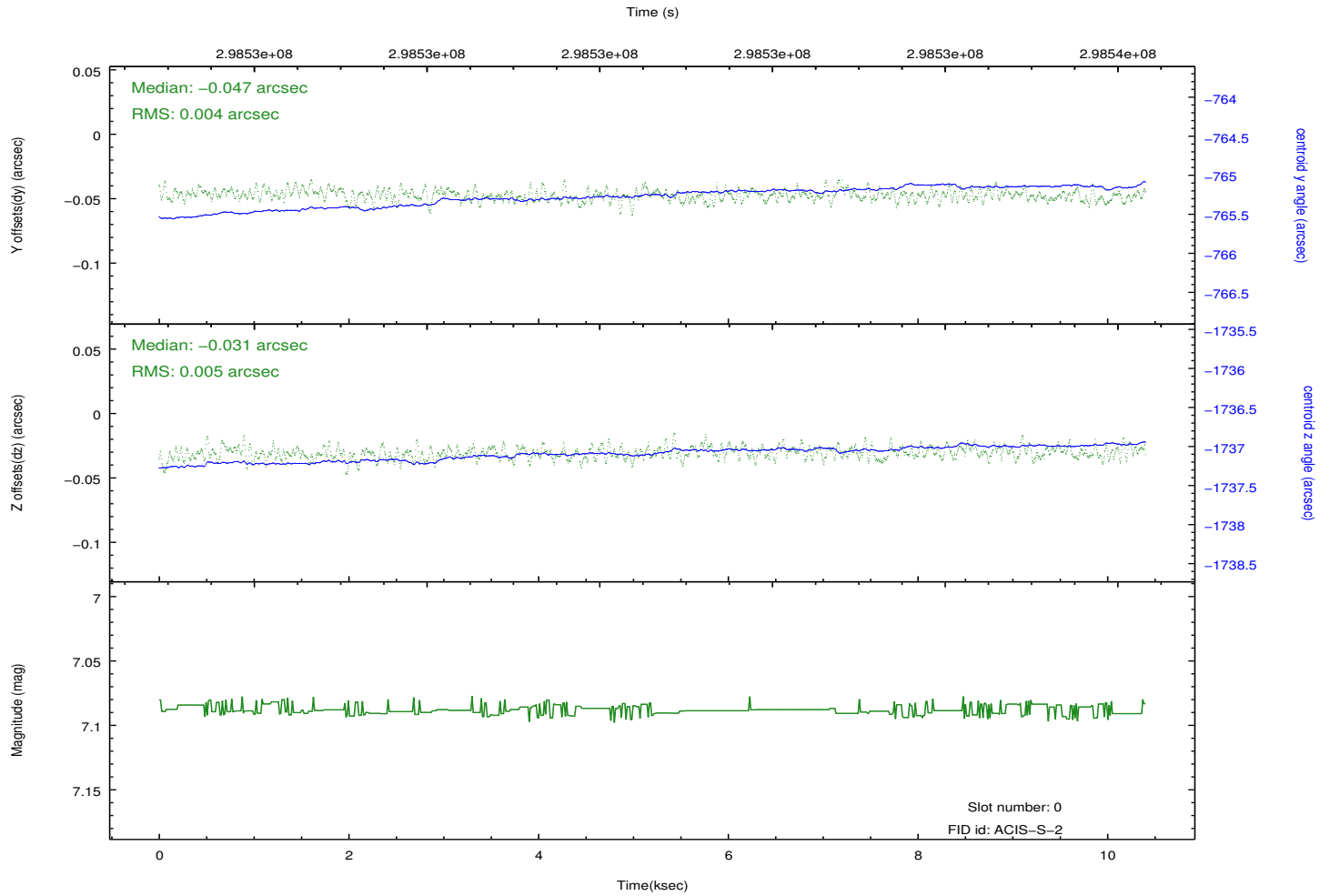
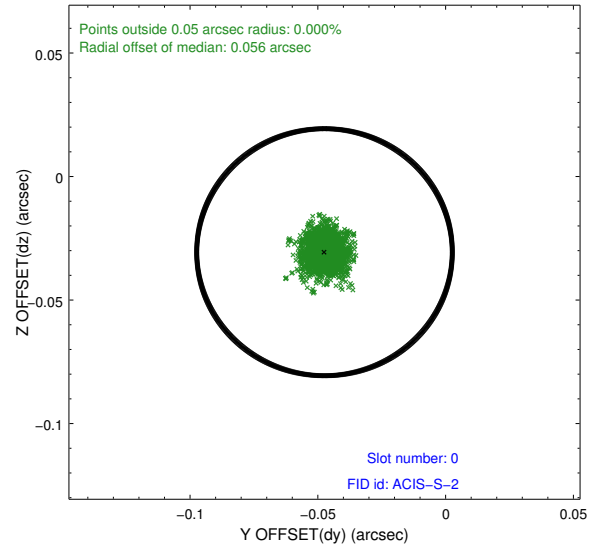
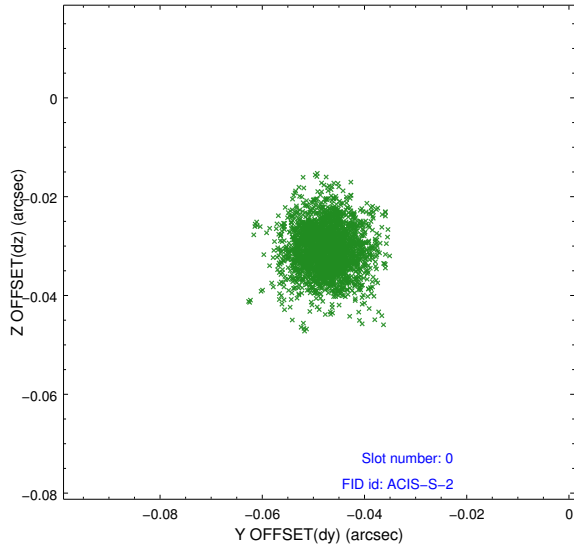


2.4.5 Slot 7

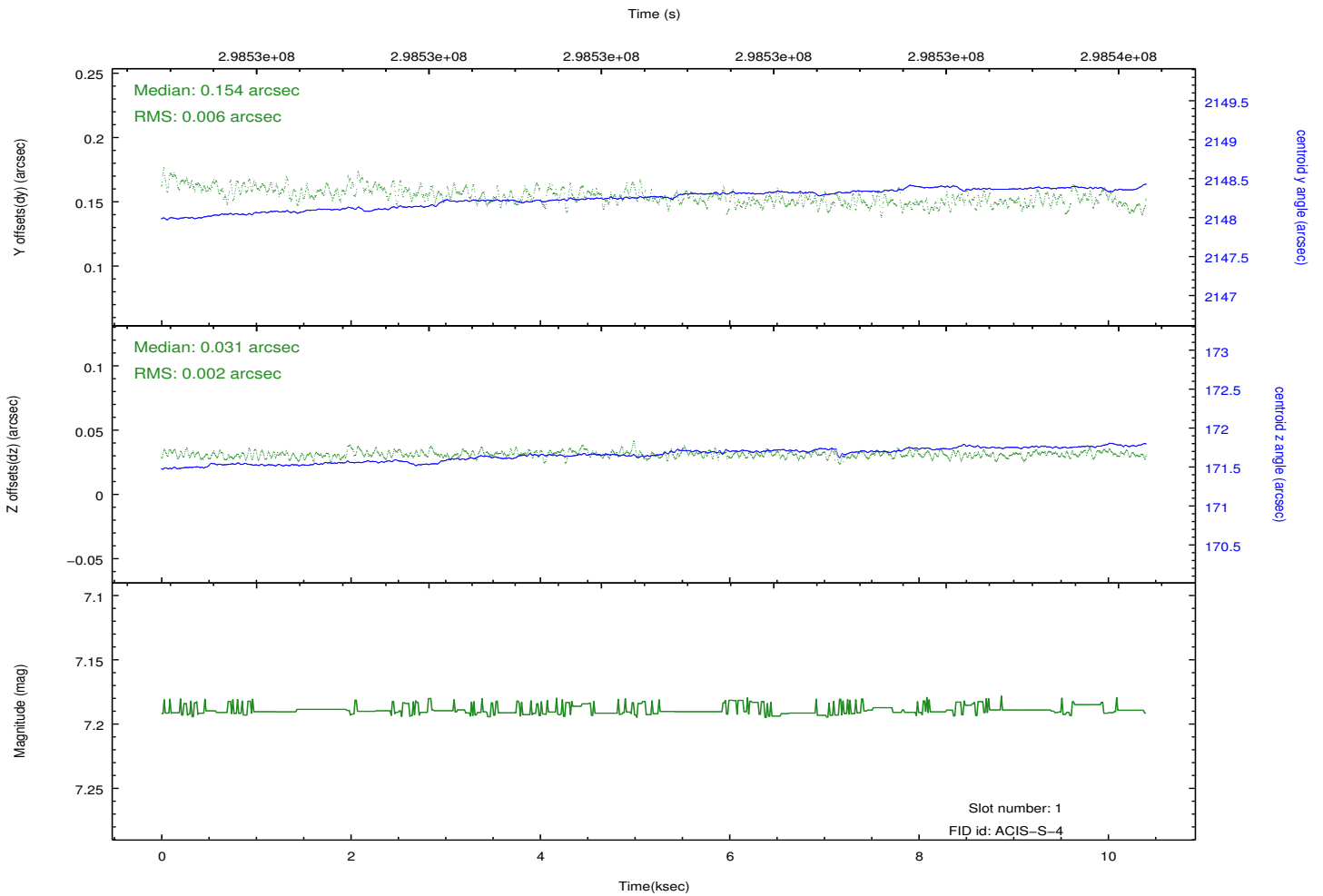
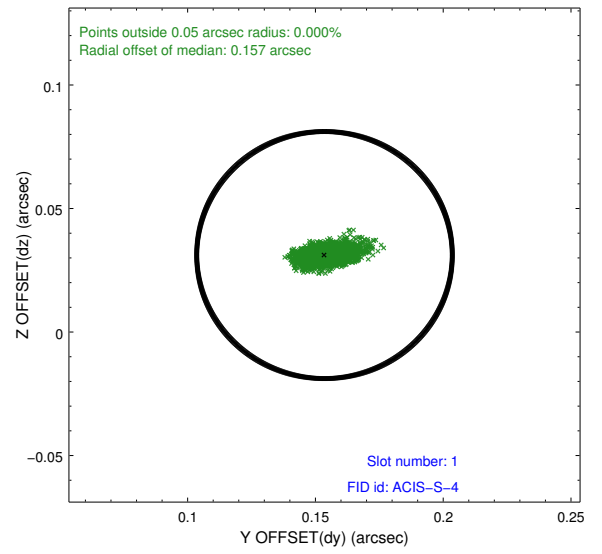
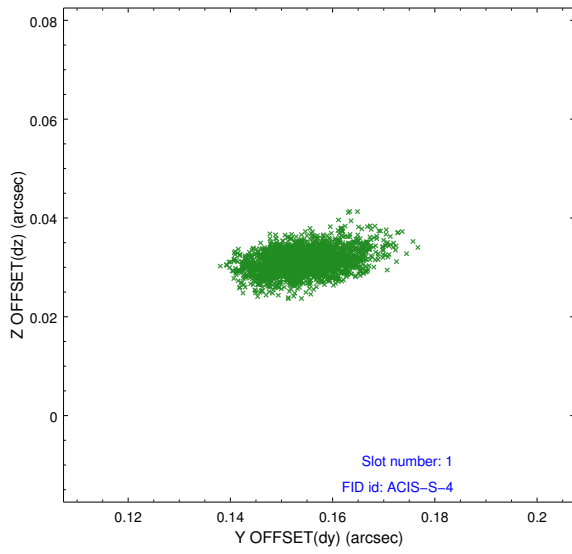


2.5 FID Slots

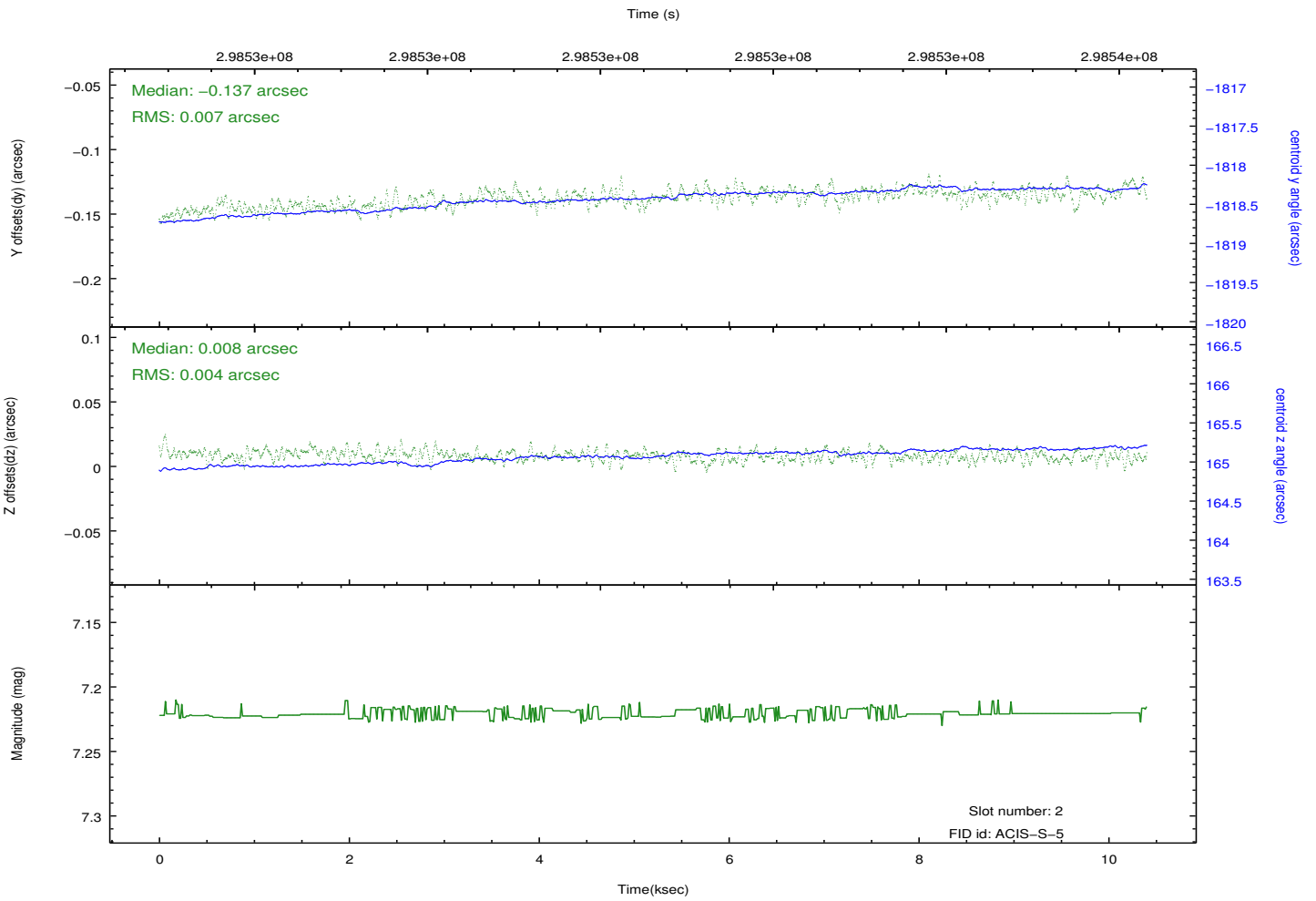
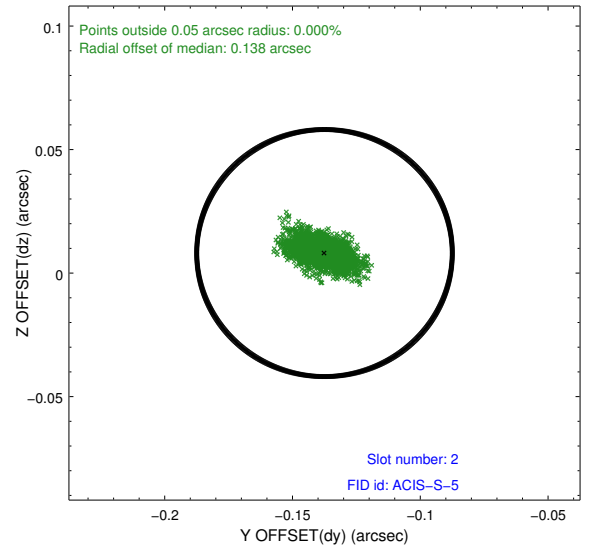
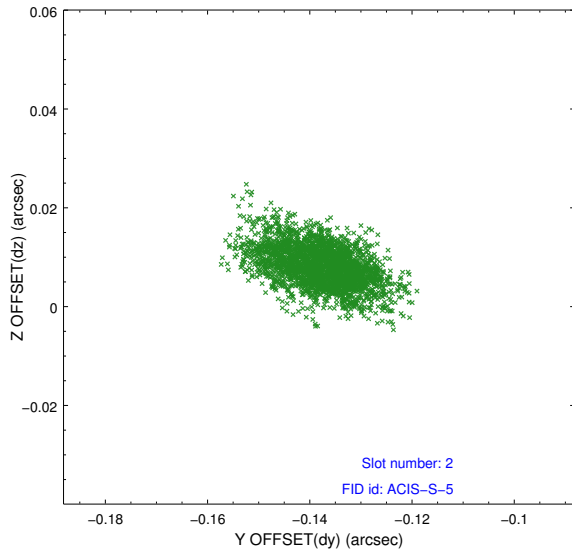
2.5.1 Slot 0



2.5.2 Slot 1



2.5.3 Slot 2



A Summary

A.1 Status

V&V Scientist	Jen Lauer
V&V Date (YYYY-MM-DD)	2012.04.26
V&V Edition	1
V&V Disposition and Status	OK
V&V Charge Time	9.74330007

A.2 Comments