

V&V Reference Report

L2 ASCDS Version : 8.4.4

Observation 7920 - L2 Version 2
Chandra X-Ray Center

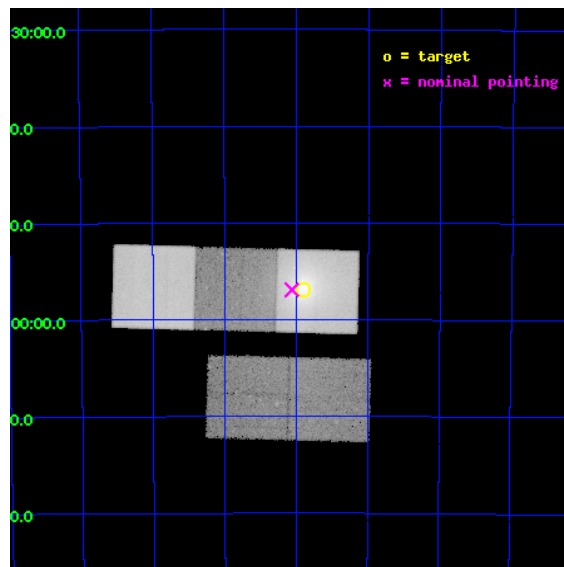
L2 Processing Date : Apr 30 2012

Contents

1	Front	2
2	OBI	3
2.1	OBI	3
2.1.1	Images	3
2.1.2	Bias	3
2.1.3	Parameters	4
2.1.4	Events	4
2.2	Compared Parameters	5
2.3	Aspect	6
2.4	Star Slots	9
2.4.1	Slot 3	9
2.4.2	Slot 4	10
2.4.3	Slot 5	11
2.4.4	Slot 6	12
2.4.5	Slot 7	13
2.5	FID Slots	14
2.5.1	Slot 0	14
2.5.2	Slot 1	15
2.5.3	Slot 2	16
A	Summary	17
A.1	Status	17
A.2	Comments	17

1 Front

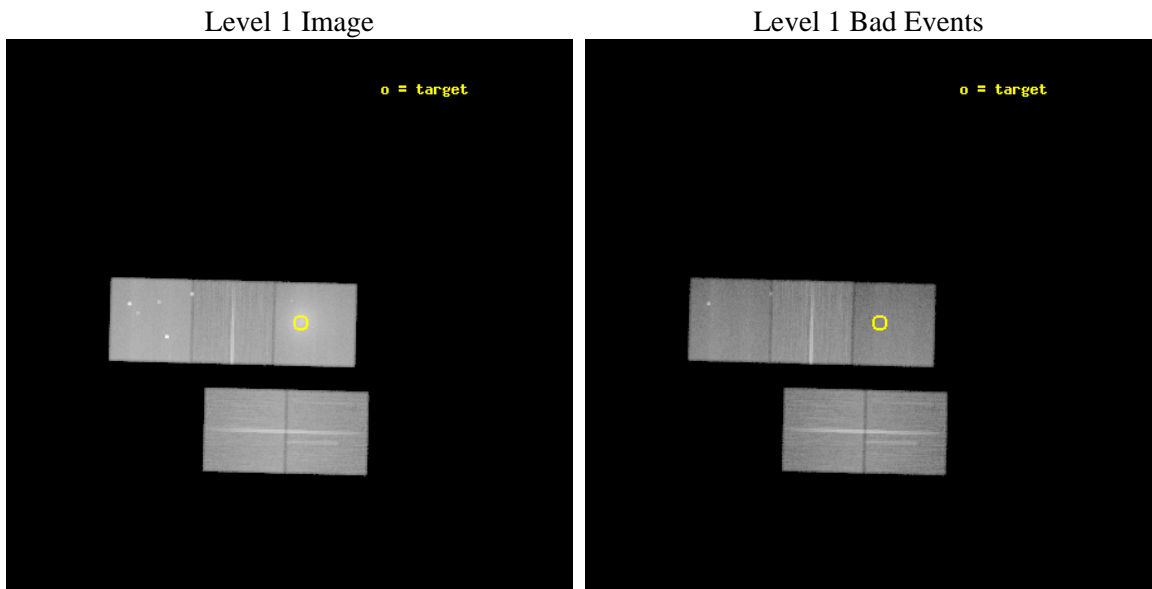
seq_num	800638	Sequence number
obs_id	7920	Observation id
title	The Core Dark Matter Profile of the Radio-Quiet Cluster A3827	Prop
observer	Dr Luca Zappacosta	Principal investigator
object	A3827	Source name
dtcycle	0	
cycle	P	events from which exps? Prim/Second/Both
ra_targ	330.474167	Observer's specified target RA [deg]
dec_targ	-59.947667	Observer's specified target Dec [deg]
ra_nom	330.51573771223	Nominal RA [deg]
dec_nom	-59.948782151201	Nominal Dec [deg]
roll_nom	1.5089461933343	Nominal Roll [deg]
revision	2	Processing version of data
ontime	46168.300355077	Sum of GTIs [s]
livetime	45565.077522329	Livetime [s]
ontime2	46152.595493317	Sum of GTIs [s]
ontime3	46158.877404094	Sum of GTIs [s]
ontime5	46168.300355077	Sum of GTIs [s]
ontime6	46162.018404305	Sum of GTIs [s]
ontime7	46168.300355077	Sum of GTIs [s]
l2events	690717	Number of level 2 events



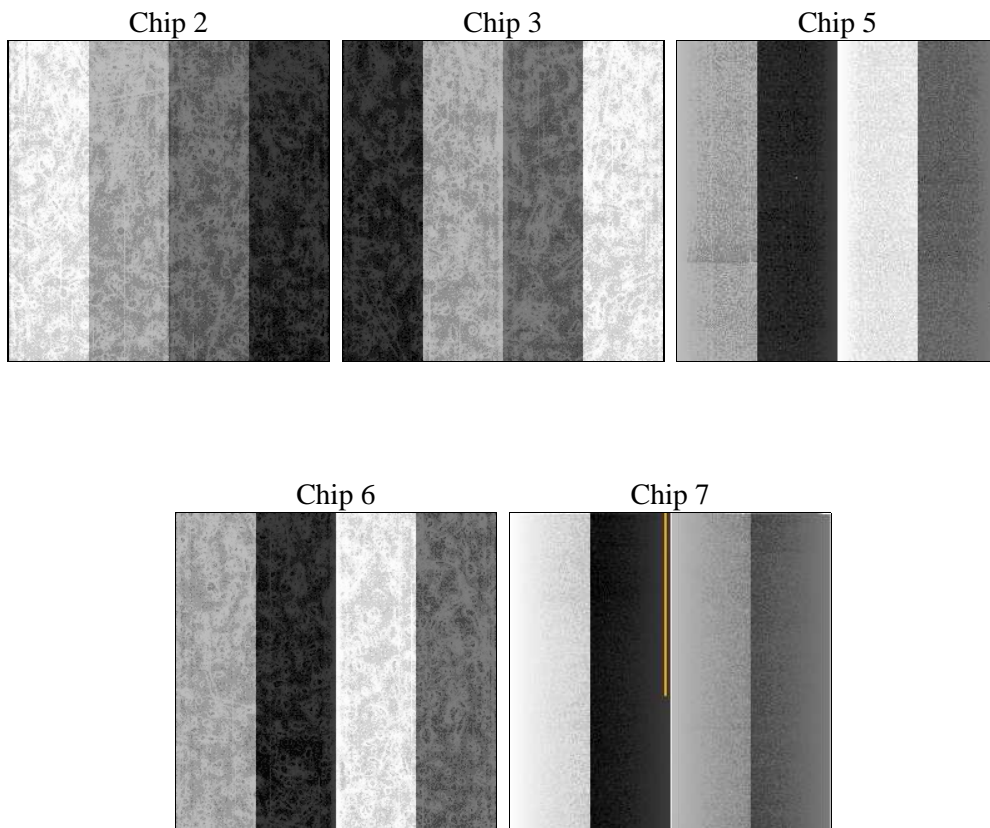
2 OBI

2.1 OBI

2.1.1 Images



2.1.2 Bias



2.1.3 Parameters

obi_num	0	Obi number	sched_exp_time	46135.438000	[s] Scheduled observation exposure time
ascdsver	8.4.4	Processing system revision	ontime	46168.300355077	Sum of GTIs [s]
caldbver	4.4.9	 	ontime2	46152.595493317	Sum of GTIs [s]
date	2012-04-30T02:35:41	Date and time of file creation	ontime3	46158.877404094	Sum of GTIs [s]
revision	2	Processing version of data	ontime5	46168.300355077	Sum of GTIs [s]
			ontime6	46162.018404305	Sum of GTIs [s]
			ontime7	46168.300355077	Sum of GTIs [s]
			l1events	2248259	Number of level 1 events

2.1.4 Events

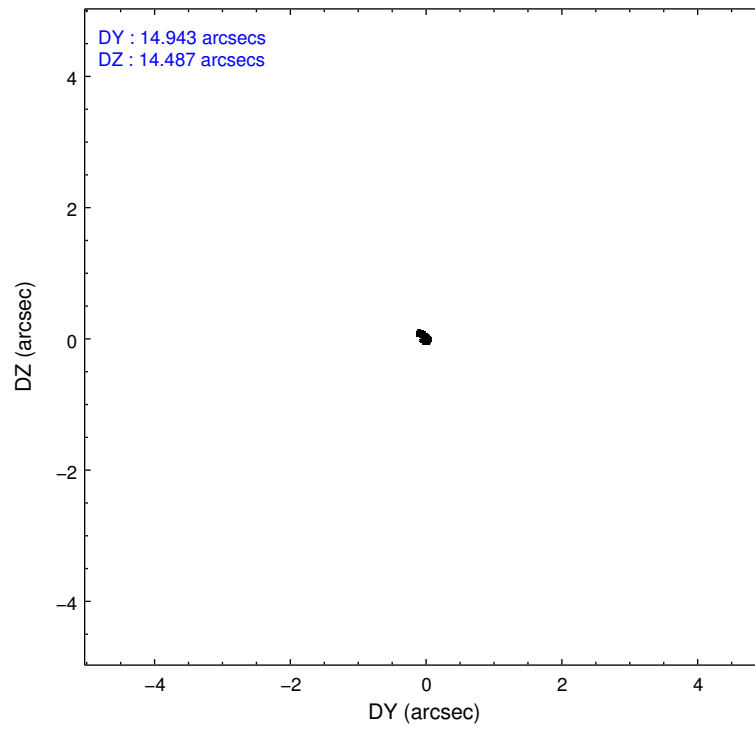
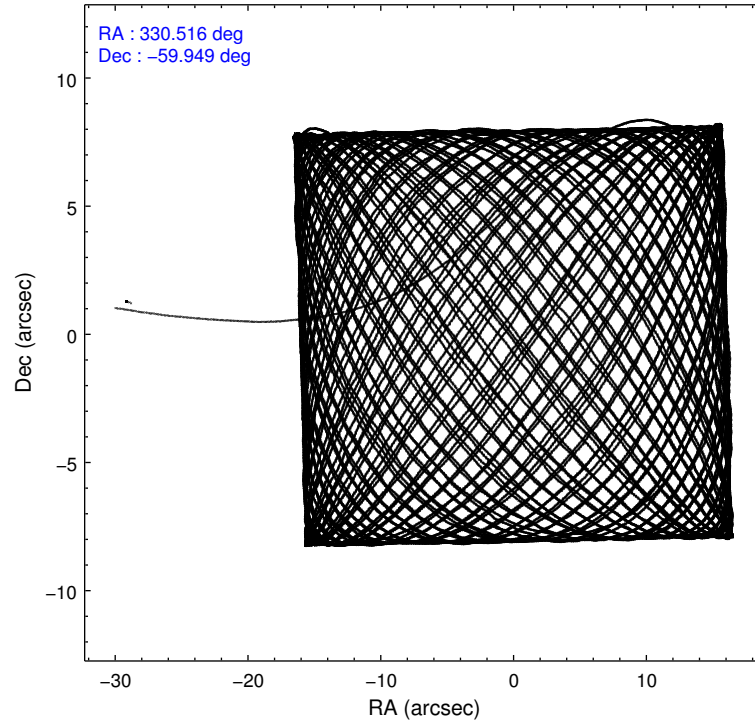
	ccd 2	ccd 3	ccd 5	ccd 6	ccd 7
level 1 events	388543	360710	527425	389018	582563
rejected events	351479	324276	262131	341035	229109
rejected %	90%	89%	49%	87%	39%

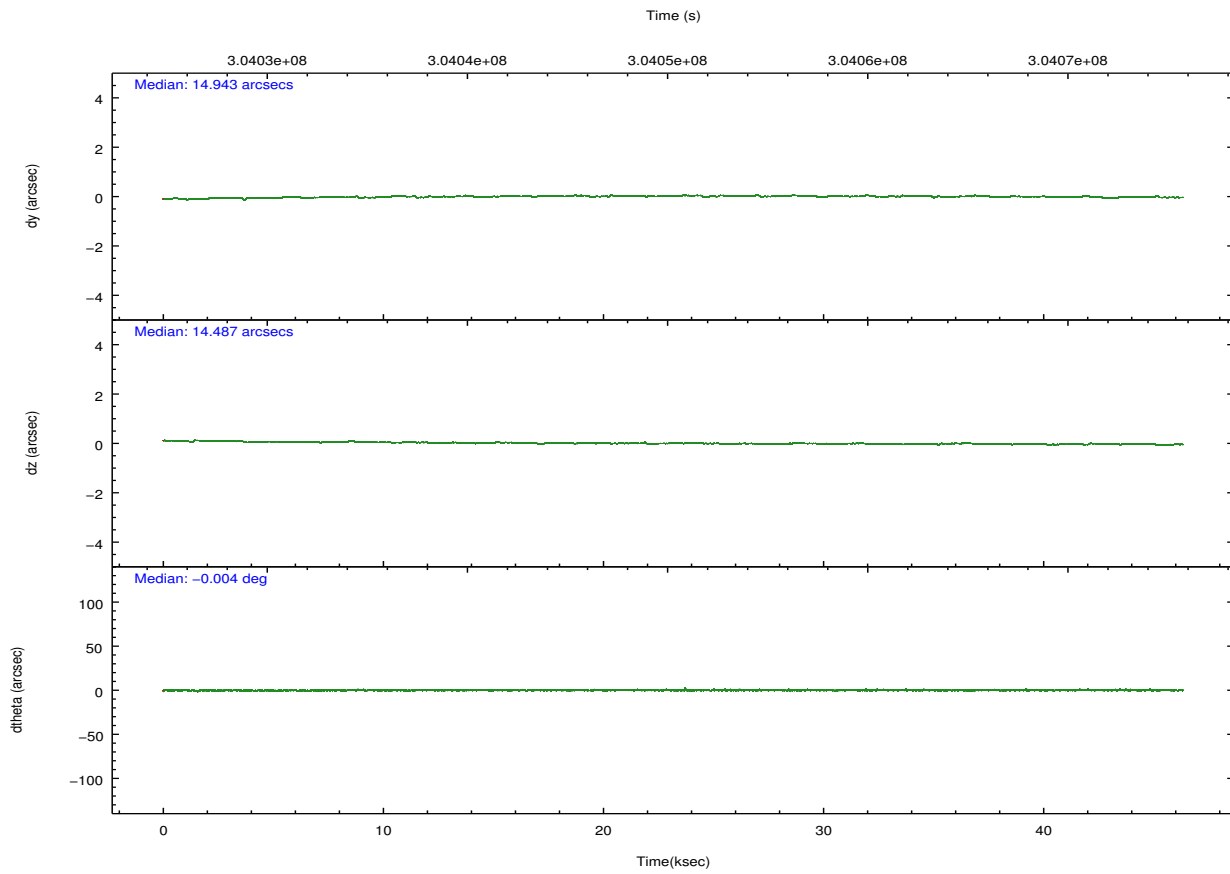
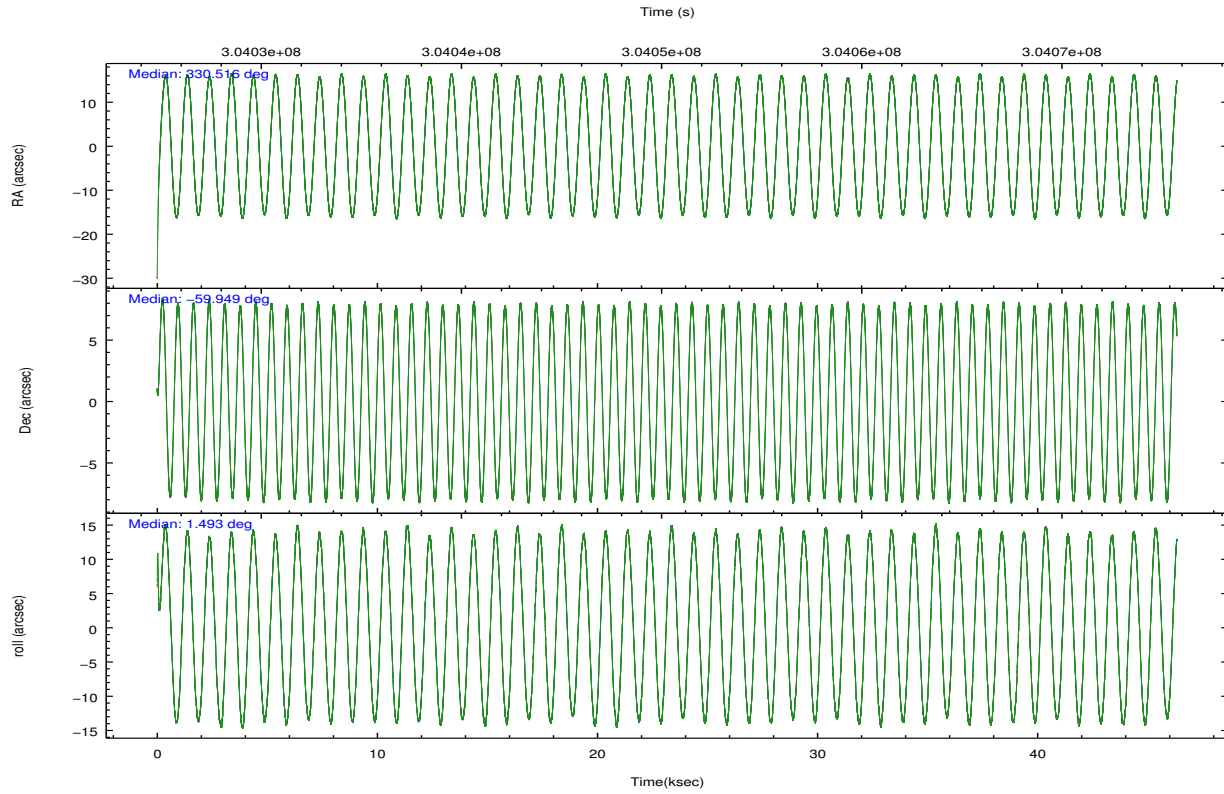
	ccd 2	ccd 3	ccd 5	ccd 6	ccd 7
grade 0 events	14116	13846	33419	20978	67622
	3%	3%	6%	5%	11%
grade 1 events	198	224	1352	224	607
	0%	0%	0%	0%	0%
grade 2 events	8717	7656	77326	9567	81246
	2%	2%	14%	2%	13%
grade 3 events	3790	4057	11268	4528	36128
	0%	1%	2%	1%	6%
grade 4 events	3816	3865	10396	4475	35907
	0%	1%	1%	1%	6%
grade 5 events	11900	14435	41049	14922	45052
	3%	4%	7%	3%	7%
grade 6 events	6629	7012	132928	8438	132570
	1%	1%	25%	2%	22%
grade 7 events	339377	309615	219687	325886	183431
	87%	85%	41%	83%	31%

2.2 Compared Parameters

Parameter	Planned	Actual	Parameter	Planned	Actual
Instrument	ACIS	ACIS	Obspar format version number	7	7
Detector	ACIS-23567	ACIS-23567	Obspar file type	PREDICTED	ACTUAL
Grating	NONE	NONE	Obspar update status	NONE	UPDATED
Data mode	VFAINT	VFAINT	CCD I0 on	N	N
Observation mode	POINTING	POINTING	CCD I1 on	N	N
[deg] Pointing RA	330.469565	330.5157377122329	CCD I2 on	O1	Y
[deg] Pointing Dec	-59.963391	-59.94878215120147	CCD I3 on	O2	Y
[deg] Pointing Roll	1.312343	1.508946193334321	CCD S0 on	N	N
[mm] SIM focus pos	-0.684267	-0.6828225247311905	CCD S1 on	Y	Y
[mm] SIM defocus	0	0.001444936568705701	CCD S2 on	Y	Y
[mm] SIM translation stage pos	-190.132523	-190.1425803651734	CCD S3 on	Y	Y
[mm] SIM translation stage offset	0	0.01005778216563158	CCD S4 on	N	N
[s] Observation start time (MET)	304027296.184000	304026362.24789	CCD S5 on	N	N
Observation start date	2007-08-20T20:00:31	2007-08-20T19:46:02	Number of optional ACIS chips dropped	0	0
[s] Observation end time (MET)	304073431.184000	304073651.13766	On-chip summing requested	N	N
Observation end date	2007-08-21T08:49:26	2007-08-21T08:54:11	Subarray requested	NONE	NONE
Read mode	TIMED	TIMED	Alternating exposures requested	N	N
			[s] Primary exposure time	0.000000	3.1

2.3 Aspect



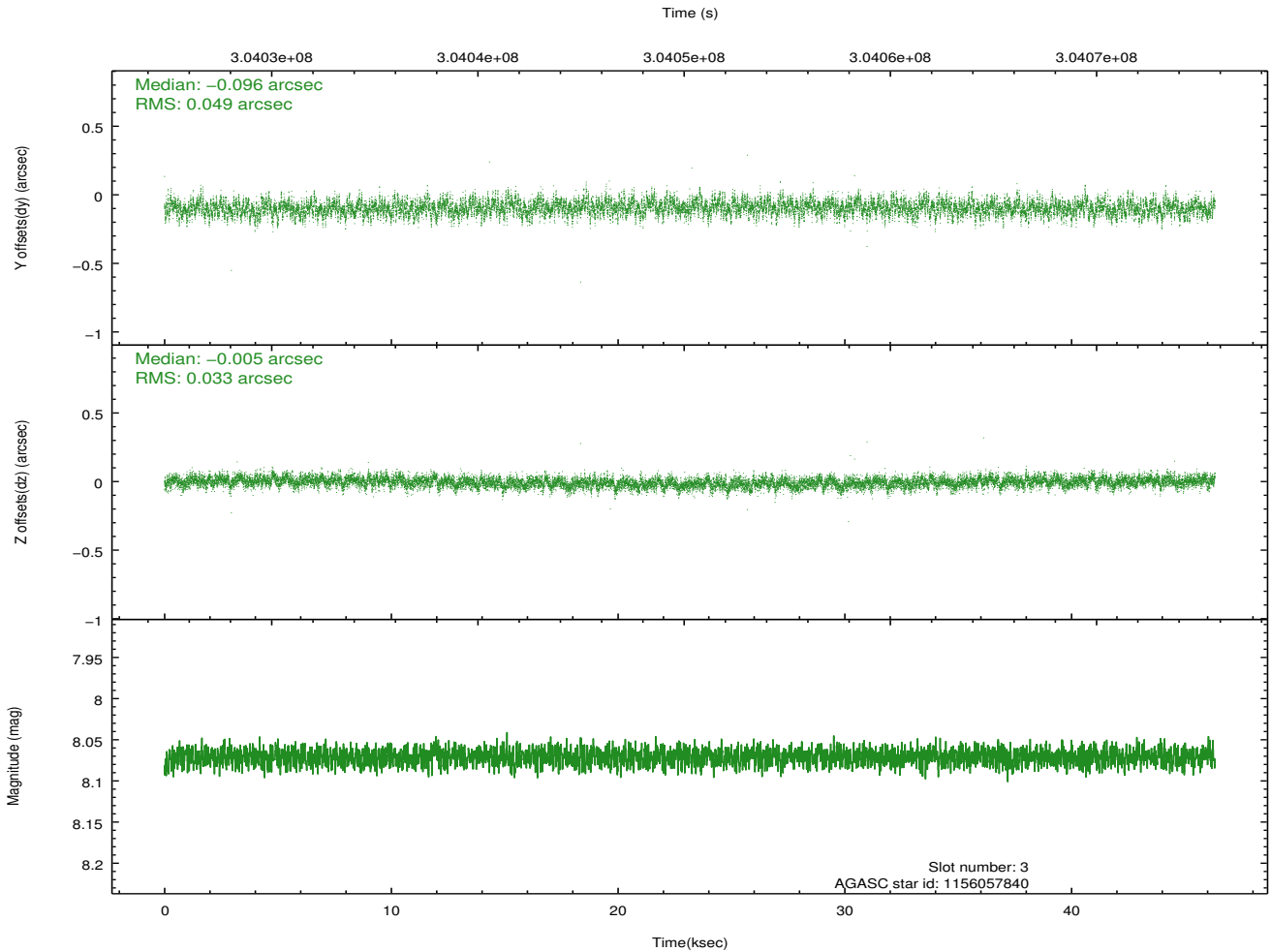
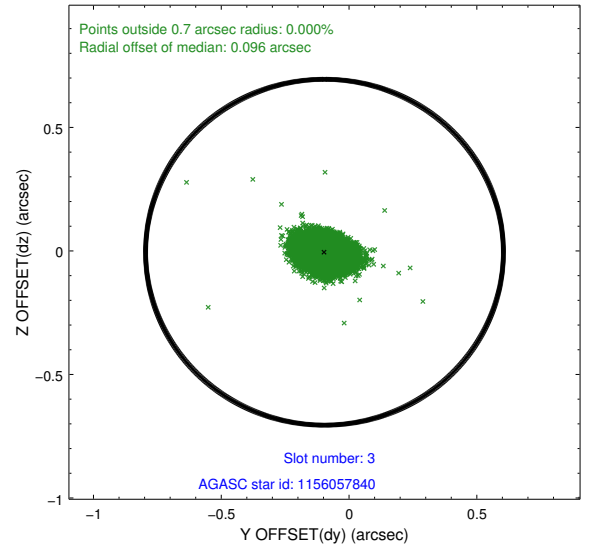
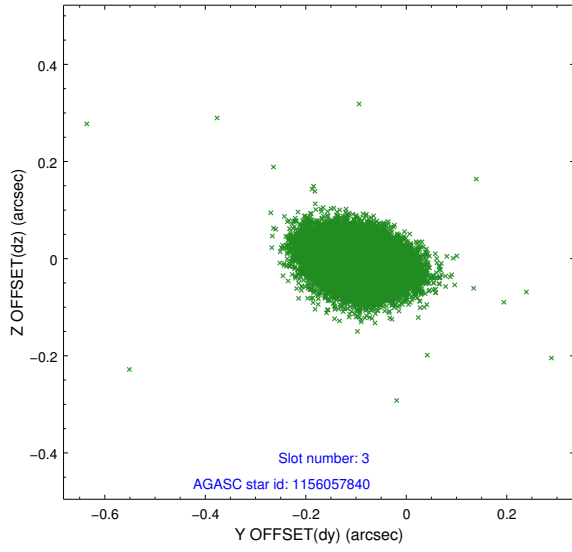


Slot Statistics

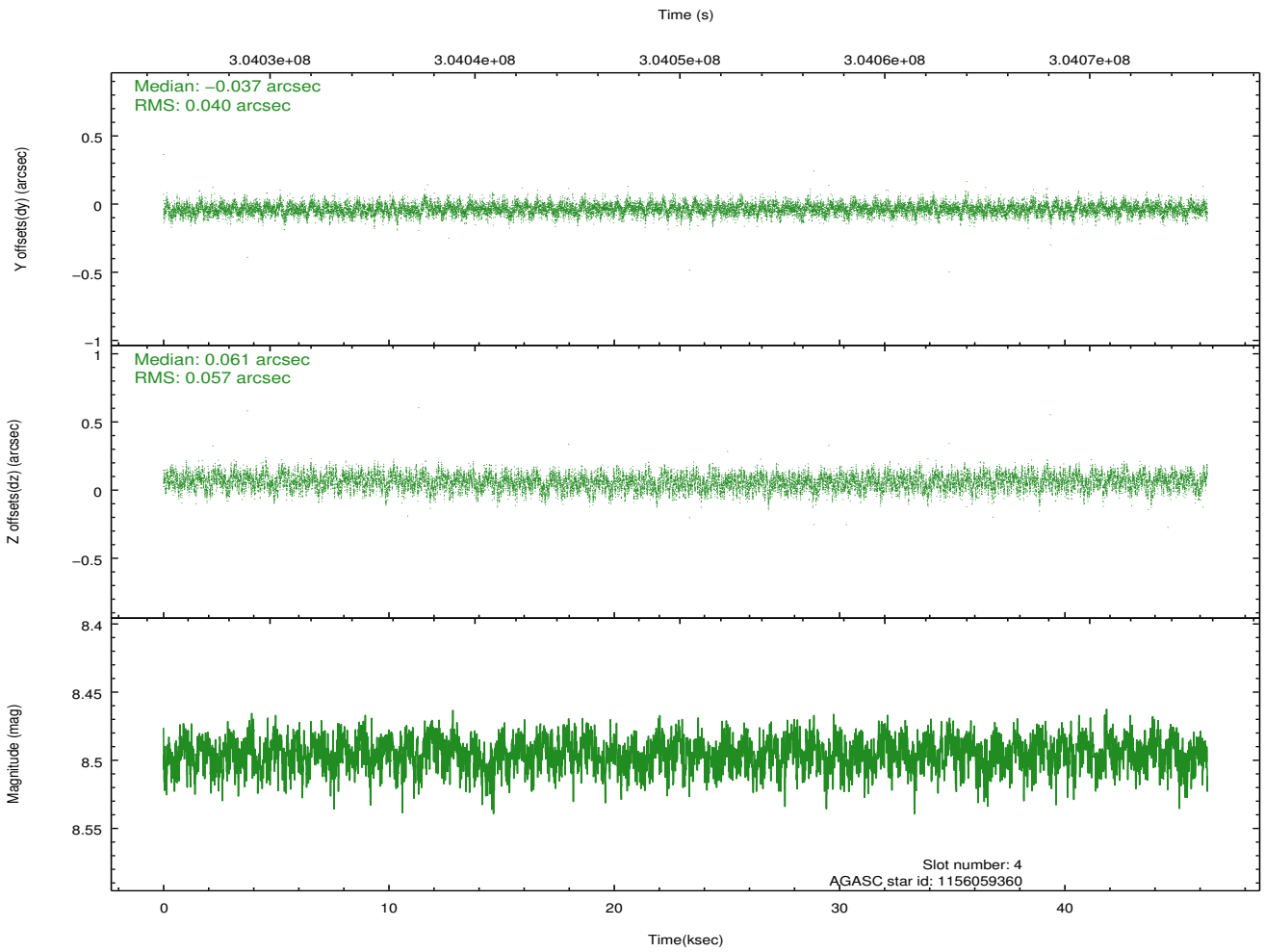
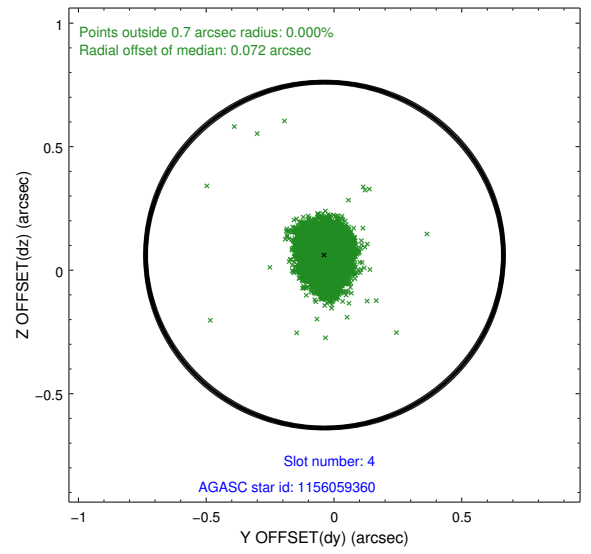
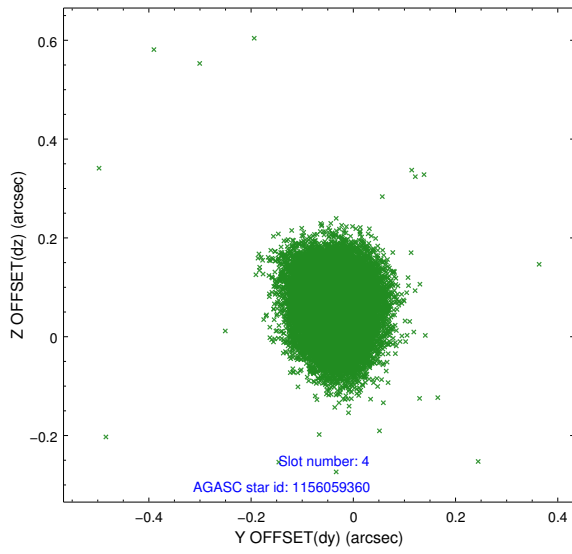
slot	status	id	mag	n_pts	med_dy	med_dz	dr1	dr2	ra	dec	mean_y	mean_z
0	FID	ACIS-S-2	7.09	11300	-0.101	-0.056	0.009	0.015	0.000000	0.000000	-768.00	-1735.87
1	FID	ACIS-S-4	7.19	11300	0.228	0.064	0.011	0.019	0.000000	0.000000	2145.60	172.74
2	FID	ACIS-S-5	7.22	11299	-0.157	0.001	0.011	0.017	0.000000	0.000000	-1820.91	166.34
3	GUIDE	1156057840	8.07	22594	-0.096	-0.005	0.062	0.105	329.259546	-59.474858	-2171.09	1787.72
4	GUIDE	1156059360	8.50	22589	-0.037	0.061	0.073	0.119	329.948850	-59.570010	-917.28	1434.08
5	GUIDE	1194866560	7.99	22584	0.628	-0.096	0.063	0.101	330.926756	-60.437459	773.89	-1727.04
6	GUIDE	1194867392	8.82	22586	-0.189	-0.036	0.091	0.148	331.185401	-60.464715	1229.04	-1839.66
7	GUIDE	1194869448	7.95	22592	-0.304	0.078	0.070	0.110	329.789620	-60.607878	-1254.02	-2298.42

2.4 Star Slots

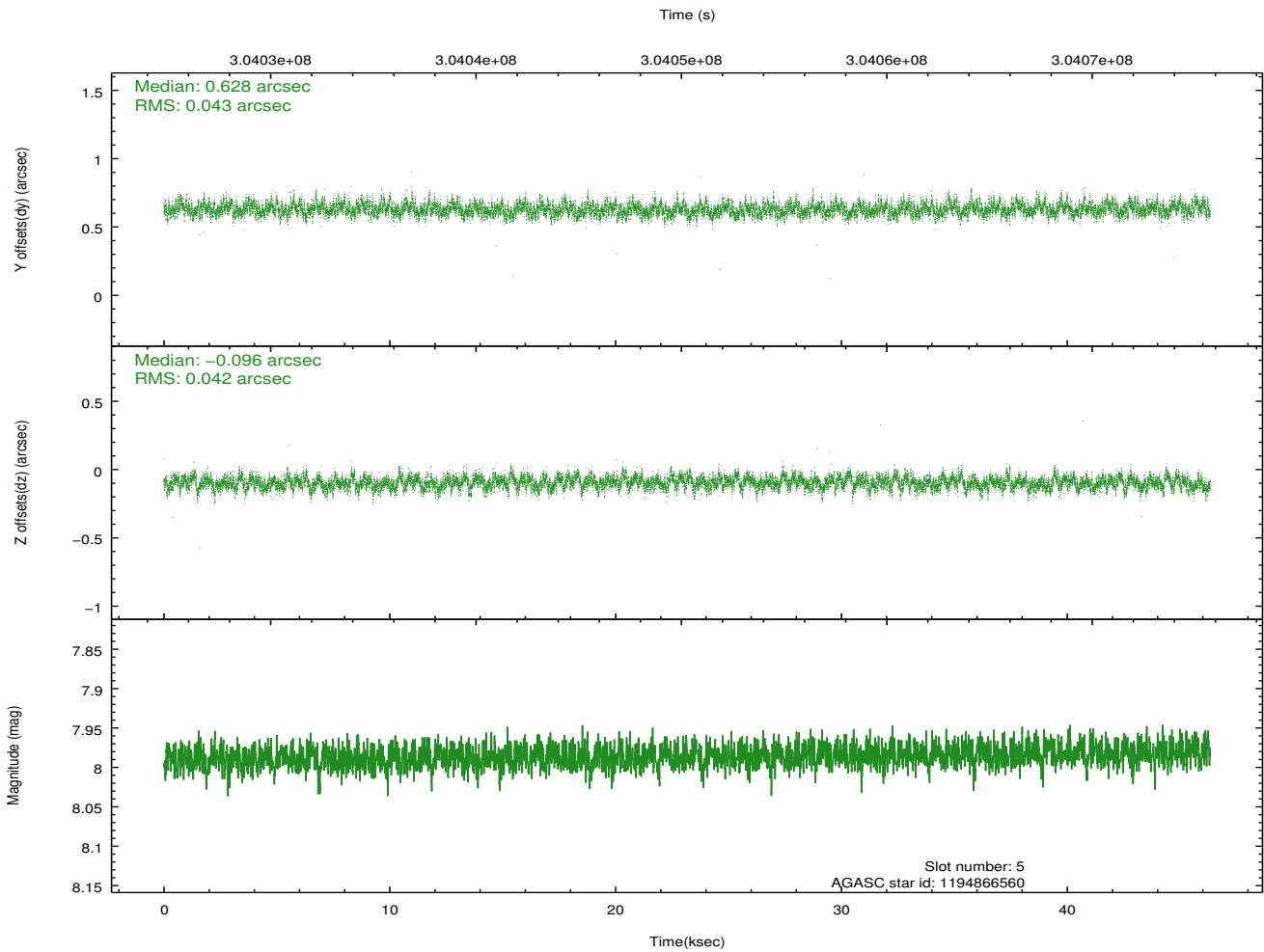
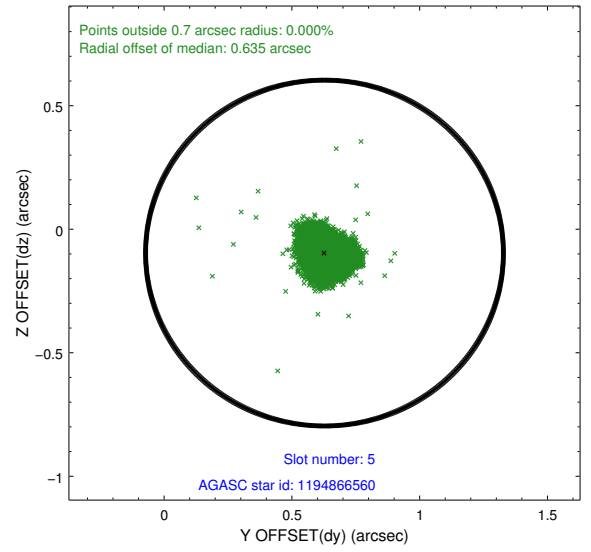
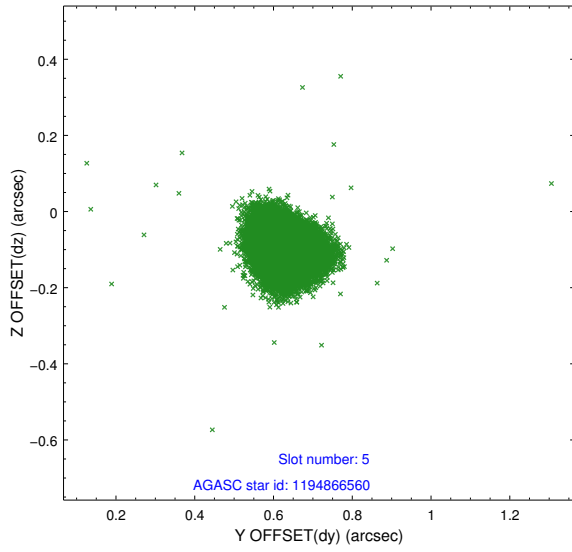
2.4.1 Slot 3



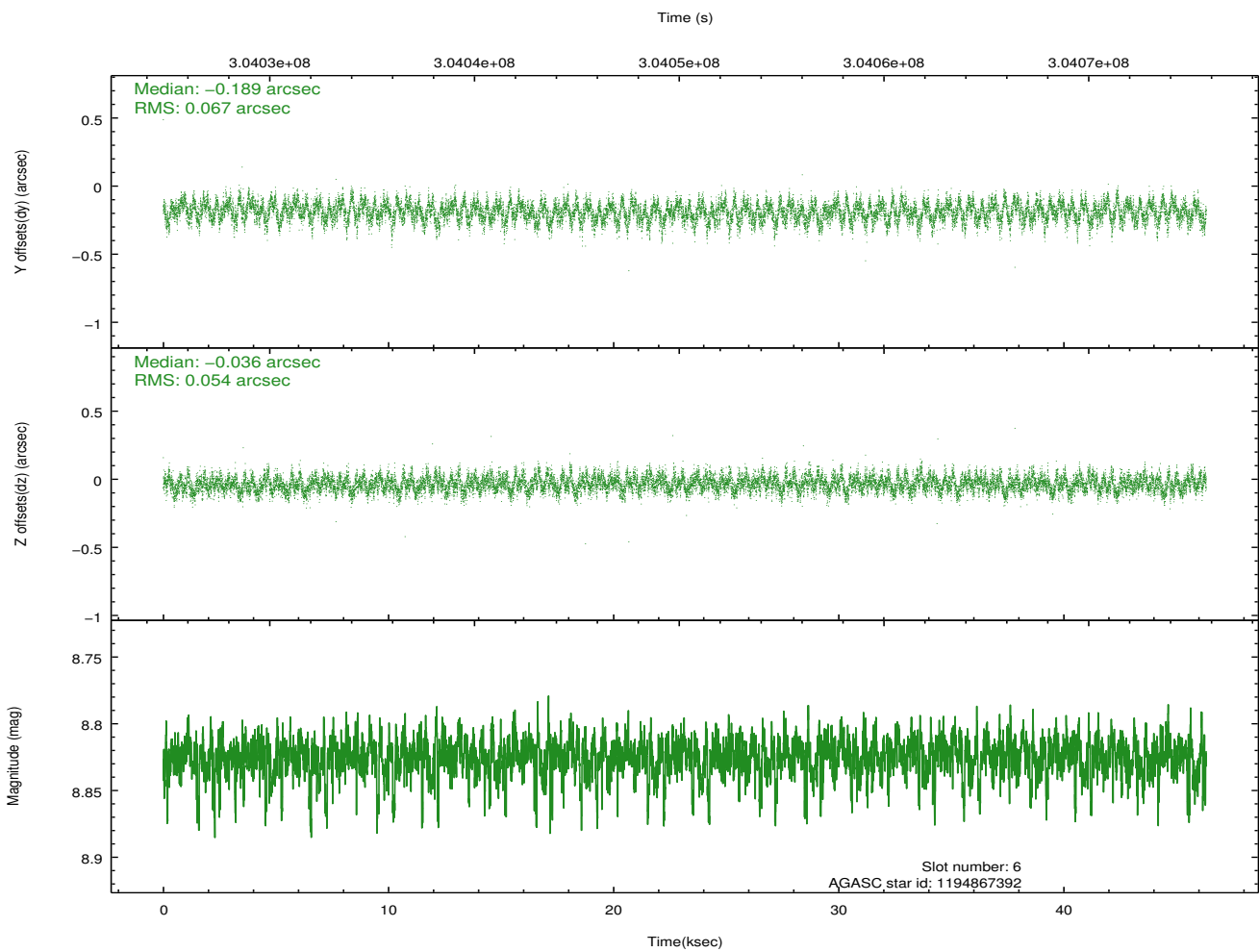
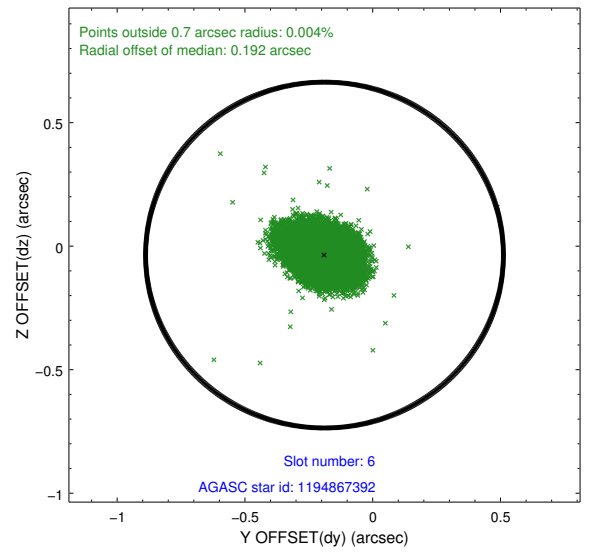
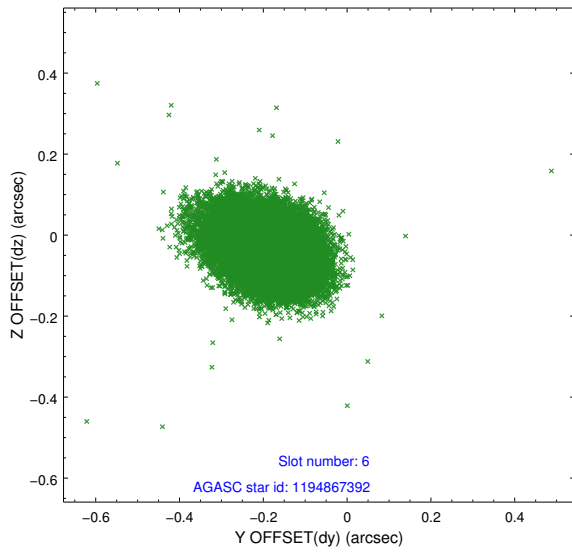
2.4.2 Slot 4



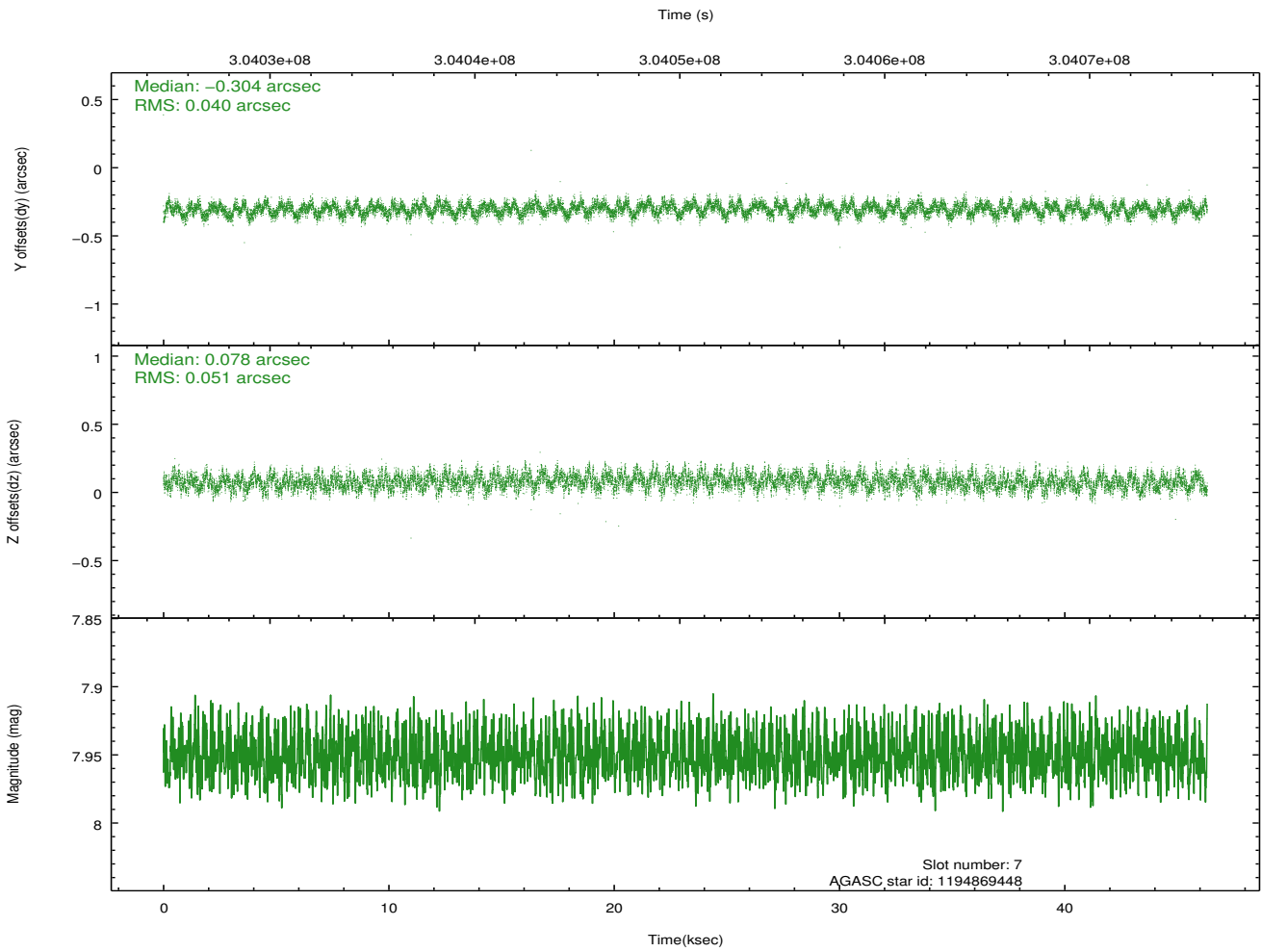
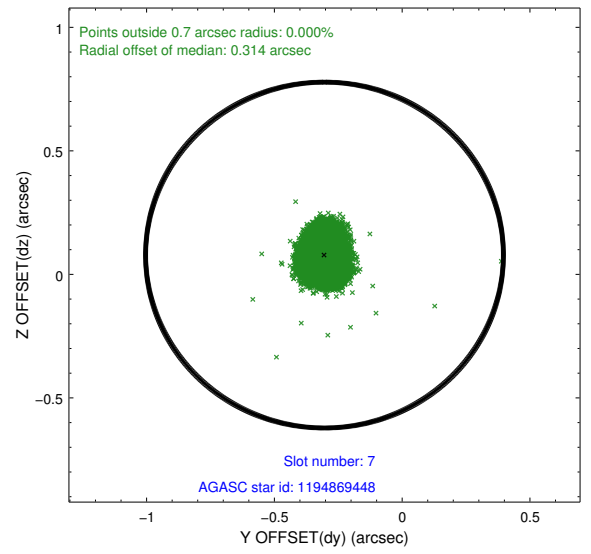
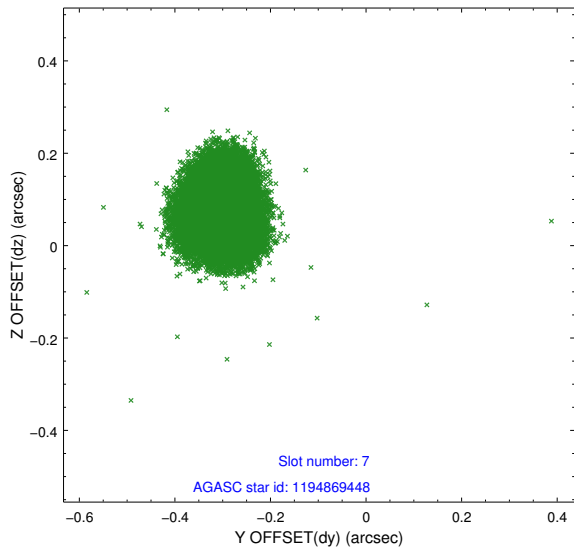
2.4.3 Slot 5



2.4.4 Slot 6

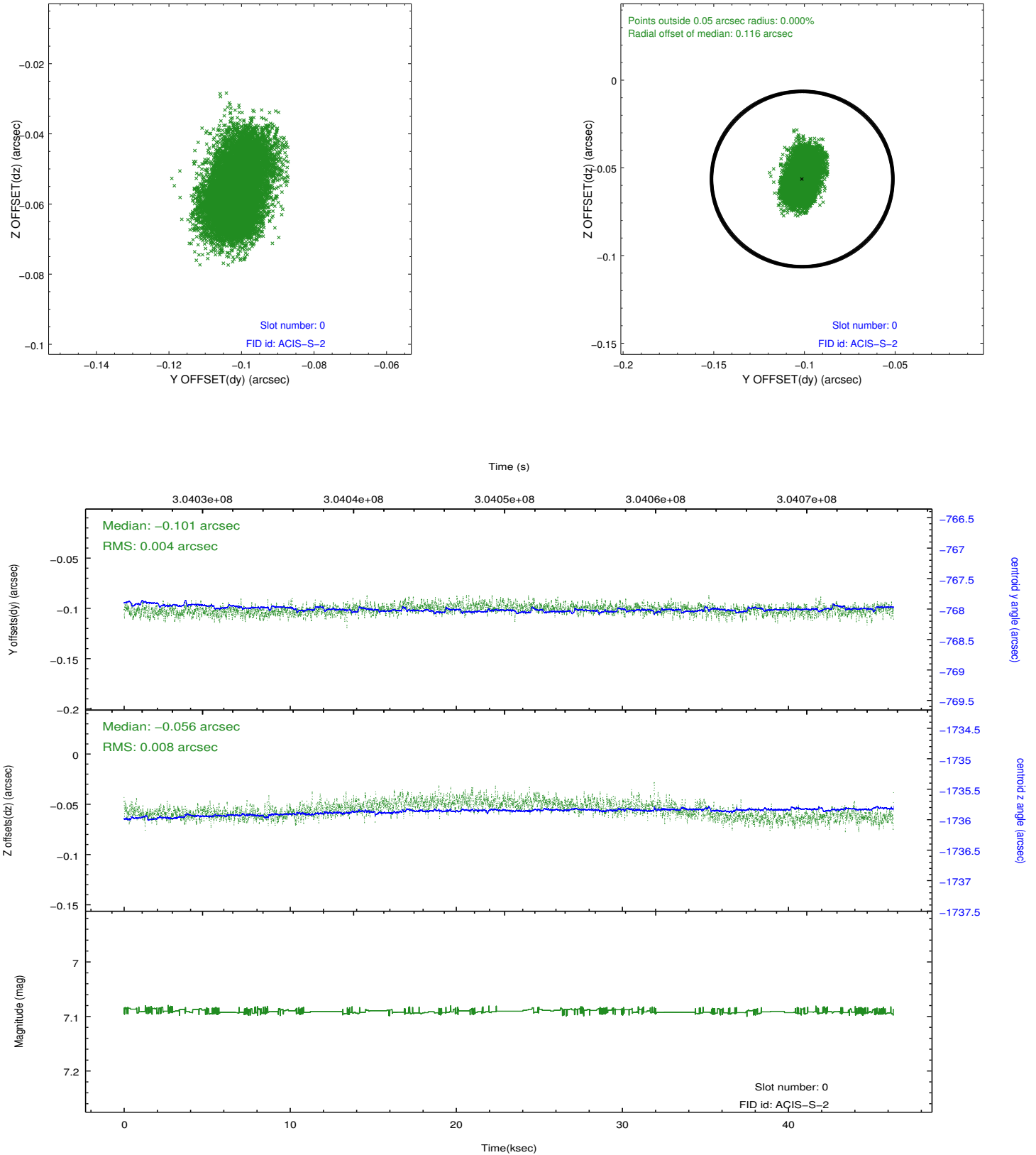


2.4.5 Slot 7

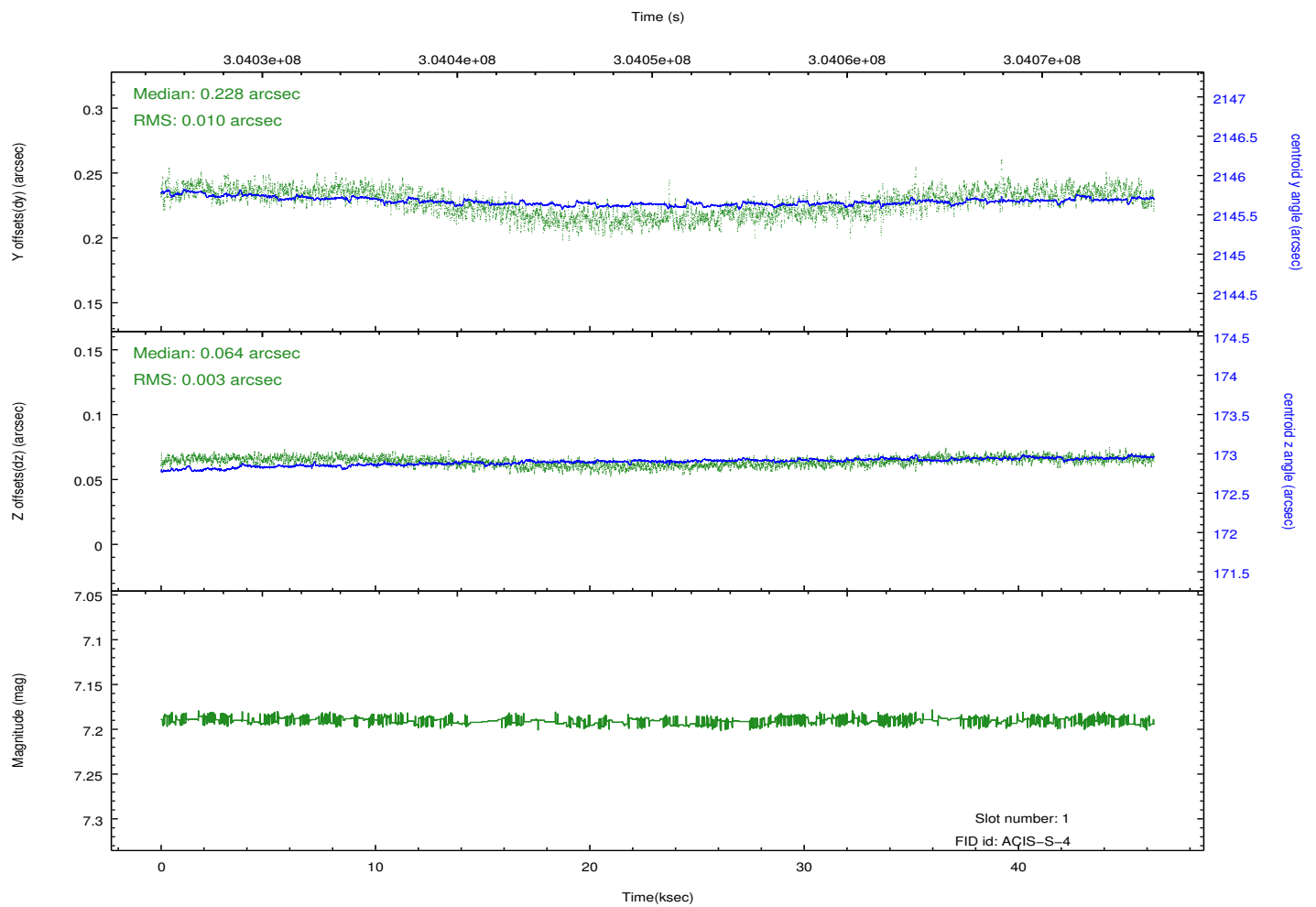
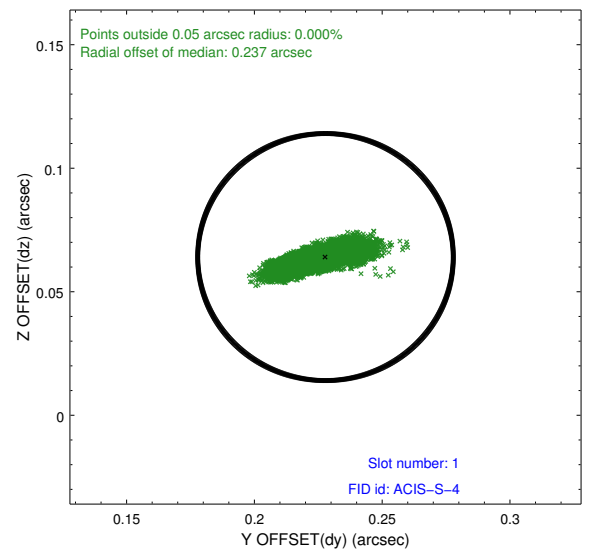
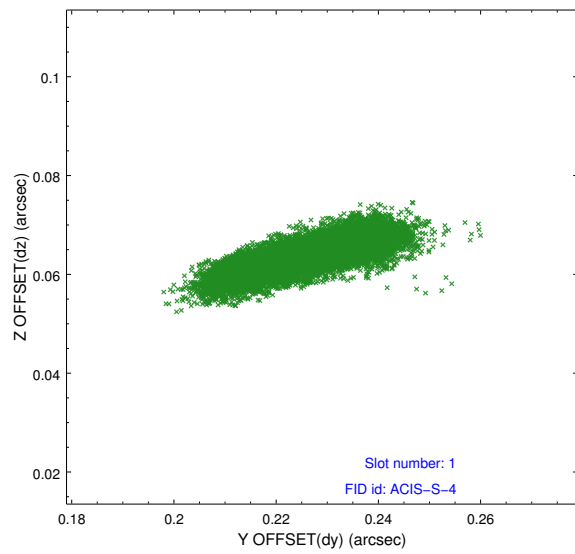


2.5 FID Slots

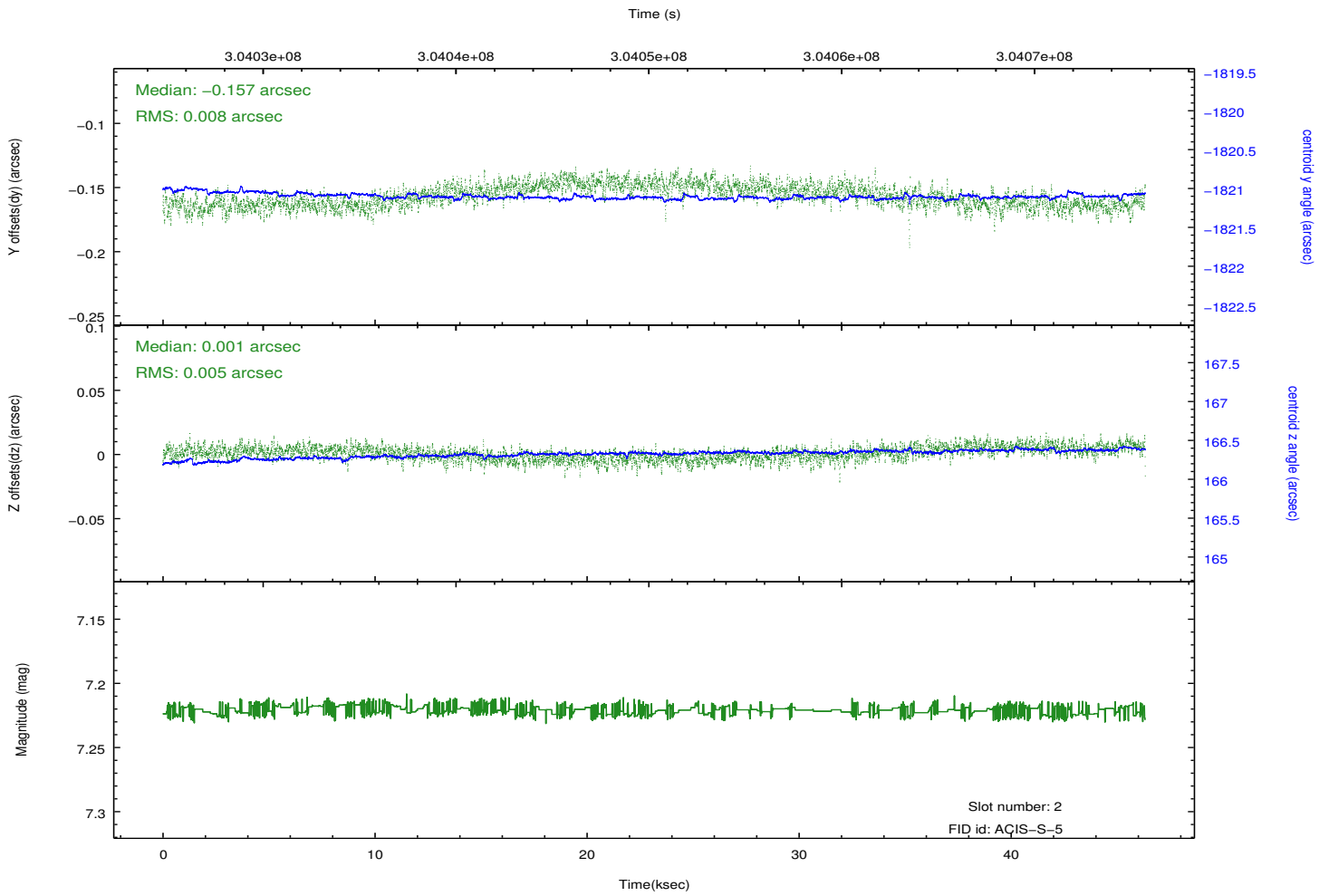
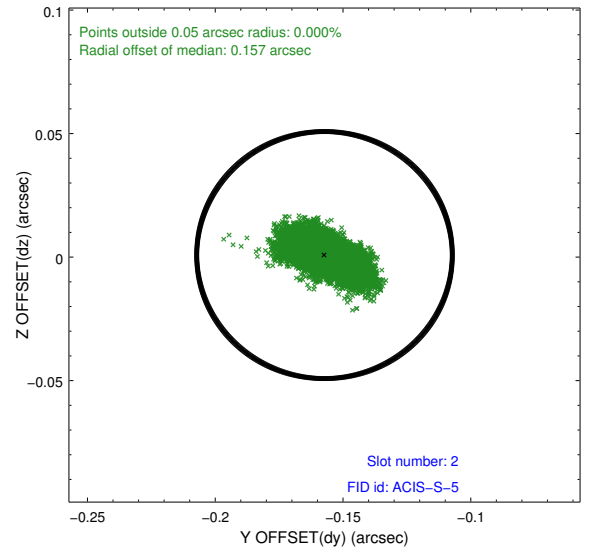
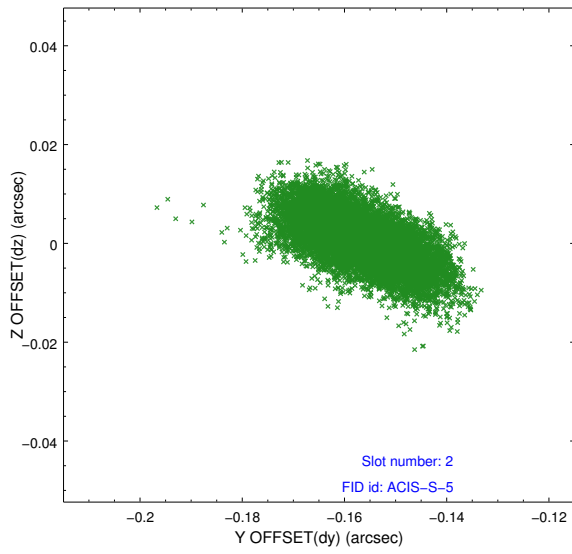
2.5.1 Slot 0



2.5.2 Slot 1



2.5.3 Slot 2



A Summary

A.1 Status

V&V Scientist	Jen Lauer
V&V Date (YYYY-MM-DD)	2012.05.02
V&V Edition	1
V&V Disposition and Status	OK
V&V Charge Time	46.1683003

A.2 Comments