

V&V Reference Report

L2 ASCDS Version : 8.4.4

Observation 7930 - L2 Version 2
Chandra X-Ray Center

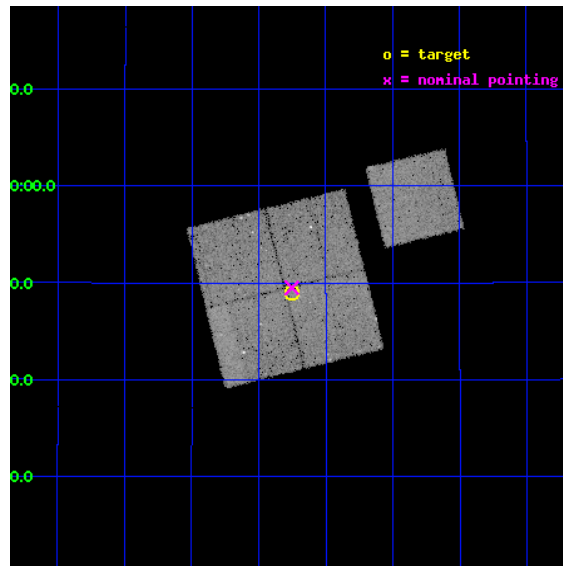
L2 Processing Date : May 1 2012

Contents

1	Front	2
2	OBI	3
2.1	OBI	3
2.1.1	Images	3
2.1.2	Bias	3
2.1.3	Parameters	4
2.1.4	Events	4
2.2	Compared Parameters	5
2.3	Aspect	6
2.4	Star Slots	9
2.4.1	Slot 3	9
2.4.2	Slot 4	10
2.4.3	Slot 5	11
2.4.4	Slot 6	12
2.4.5	Slot 7	13
2.5	FID Slots	14
2.5.1	Slot 0	14
2.5.2	Slot 1	15
2.5.3	Slot 2	16
A	Summary	17
A.1	Status	17
A.2	Comments	17

1 Front

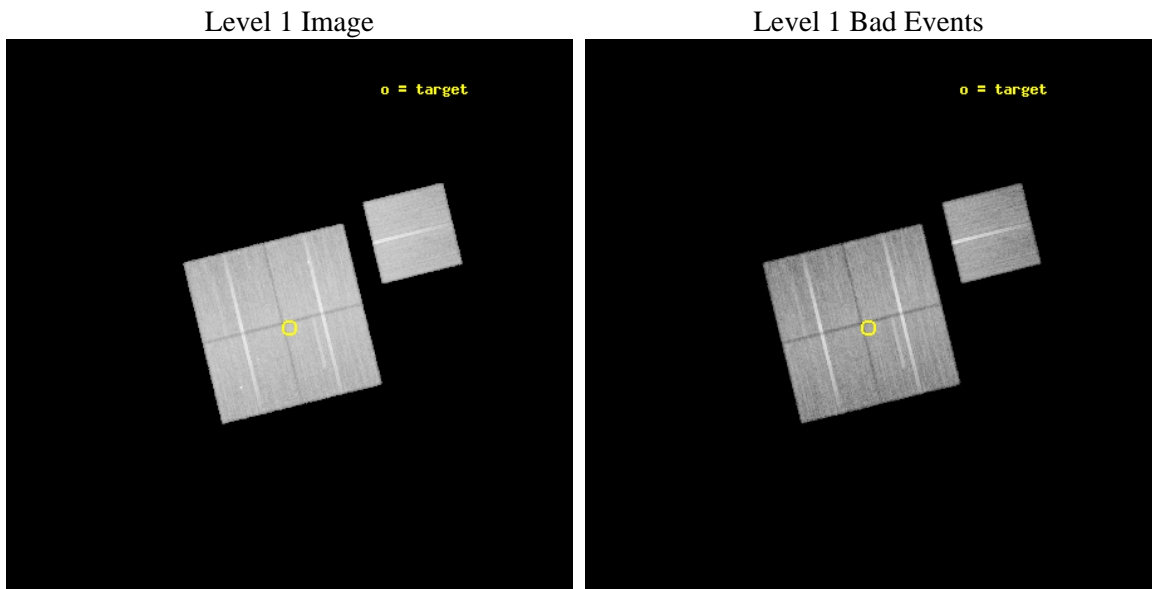
seq_num	800648	Sequence number
obs_id	7930	Observation id
title	A Complete Baryon Census in a Nearby Galaxy Group	Proposal title
observer	Dr. John Mulchaey	Principal investigator
object	NGC2563-P7	Source name
dtcycle	0	
cycle	P	events from which exps? Prim/Second/Both
ra_targ	124.81375	Observer's specified target RA [deg]
dec_targ	20.816778	Observer's specified target Dec [deg]
ra_nom	124.81323219091	Nominal RA [deg]
dec_nom	20.824850583973	Nominal Dec [deg]
roll_nom	76.217194361677	Nominal Roll [deg]
revision	2	Processing version of data
ontime	28693.559210539	Sum of GTIs [s]
livetime	28318.656735562	Livetime [s]
ontime0	28690.396722913	Sum of GTIs [s]
ontime1	28680.995399058	Sum of GTIs [s]
ontime2	28690.418399751	Sum of GTIs [s]
ontime3	28693.559210539	Sum of GTIs [s]
ontime6	28696.637503982	Sum of GTIs [s]
l2events	99412	Number of level 2 events



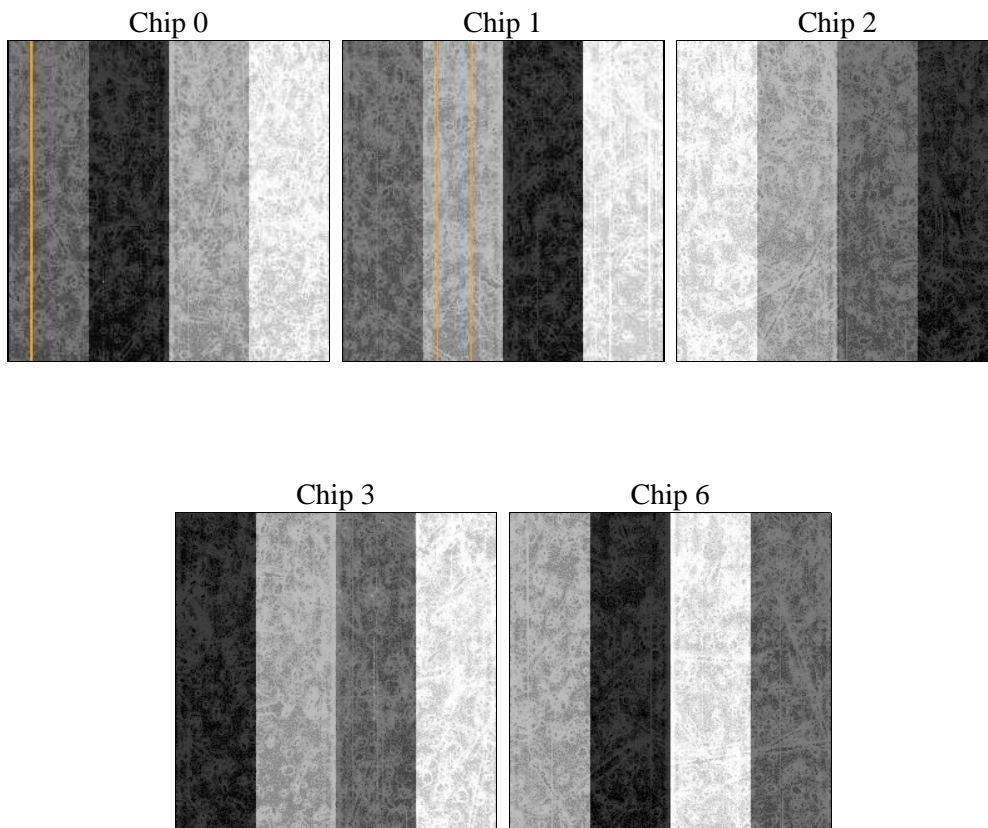
2 OBI

2.1 OBI

2.1.1 Images



2.1.2 Bias



2.1.3 Parameters

obi_num	0	Obi number	sched_exp_time	28922.000000	[s] Scheduled observation exposure time
ascdsver	8.4.4	Processing system revision	ontime	28693.559210539	Sum of GTIs [s]
caldbver	4.4.9	 	ontime0	28690.396722913	Sum of GTIs [s]
date	2012-05-01T20:28:49	Date and time of file creation	ontime1	28680.995399058	Sum of GTIs [s]
revision	2	Processing version of data	ontime2	28690.418399751	Sum of GTIs [s]
			ontime3	28693.559210539	Sum of GTIs [s]
			ontime6	28696.637503982	Sum of GTIs [s]
			l1events	1178508	Number of level 1 events

2.1.4 Events

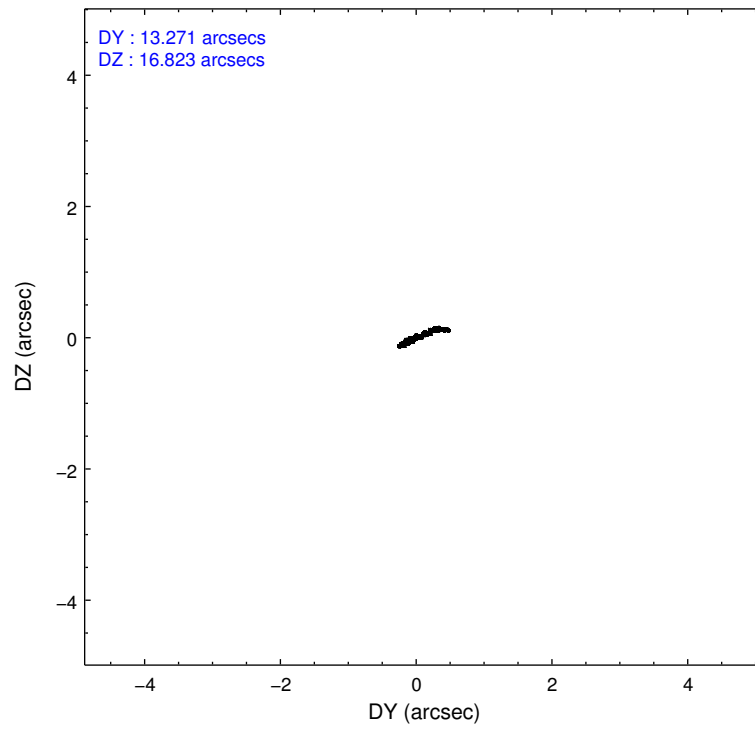
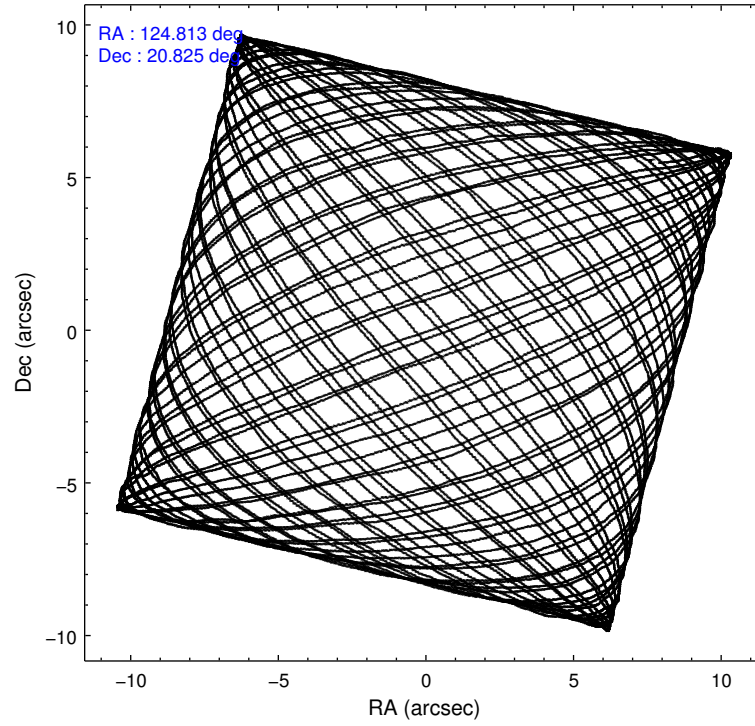
	ccd 0	ccd 1	ccd 2	ccd 3	ccd 6
level 1 events	223528	226916	254940	232588	240536
rejected events	199647	199907	231577	210591	216558
rejected %	89%	88%	90%	90%	90%

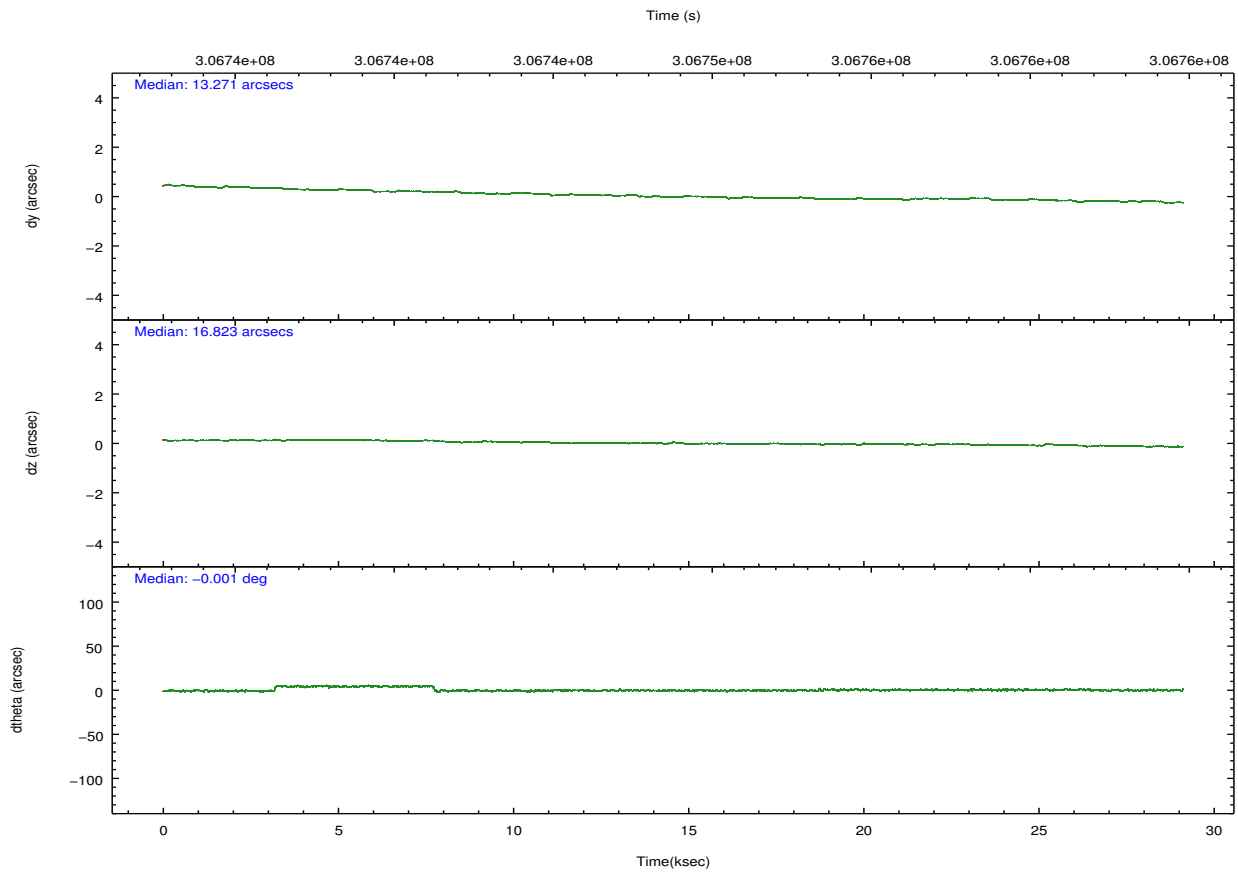
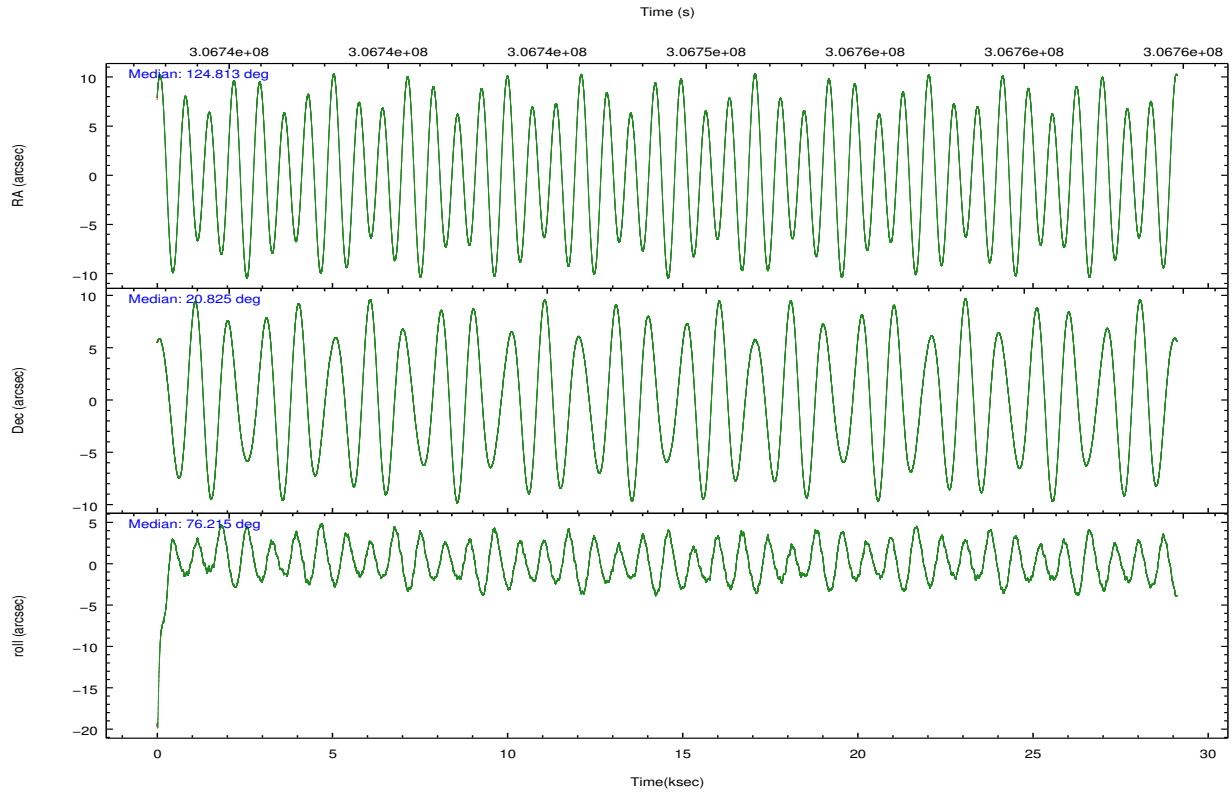
	ccd 0	ccd 1	ccd 2	ccd 3	ccd 6
grade 0 events	8488	10107	8549	7742	8244
	3%	4%	3%	3%	3%
grade 1 events	124	123	146	124	126
	0%	0%	0%	0%	0%
grade 2 events	5856	6025	5623	4871	5388
	2%	2%	2%	2%	2%
grade 3 events	2596	2816	2425	2477	2624
	1%	1%	0%	1%	1%
grade 4 events	2489	2795	2568	2415	2598
	1%	1%	1%	1%	1%
grade 5 events	7995	9131	7717	9346	9097
	3%	4%	3%	4%	3%
grade 6 events	4456	5272	4204	4499	5129
	1%	2%	1%	1%	2%
grade 7 events	191524	190647	223708	201114	207330
	85%	84%	87%	86%	86%

2.2 Compared Parameters

Parameter	Planned	Actual	Parameter	Planned	Actual
Instrument	ACIS	ACIS	Obspar format version number	7	7
Detector	ACIS-01236	ACIS-01236	Obspar file type	PREDICTED	ACTUAL
Grating	NONE	NONE	Obspar update status	NONE	UPDATED
Data mode	VFAINT	VFAINT	CCD I0 on	Y	Y
Observation mode	POINTING	POINTING	CCD I1 on	Y	Y
[deg] Pointing RA	124.821543	124.8132321909098	CCD I2 on	Y	Y
[deg] Pointing Dec	20.798474	20.82485058397279	CCD I3 on	Y	Y
[deg] Pointing Roll	76.005559	76.2171943616775	CCD S0 on	N	N
[mm] SIM focus pos	-0.782348	-0.7809083437167272	CCD S1 on	N	N
[mm] SIM defocus	0	0.001439871863259334	CCD S2 on	O1	Y
[mm] SIM translation stage pos	-233.592463	-233.5874344608287	CCD S3 on	N	N
[mm] SIM translation stage offset	0	-0.005018542100998502	CCD S4 on	N	N
[s] Observation start time (MET)	306734393.184000	306734017.7531	CCD S5 on	N	N
Observation start date	2007-09-21T03:58:48	2007-09-21T03:53:37	Number of optional ACIS chips dropped	0	0
[s] Observation end time (MET)	306763315.184000	306764390.04207	On-chip summing requested	N	N
Observation end date	2007-09-21T12:00:50	2007-09-21T12:19:50	Subarray requested	NONE	NONE
Read mode	TIMED	TIMED	Alternating exposures requested	N	N
			[s] Primary exposure time	0.000000	3.1

2.3 Aspect



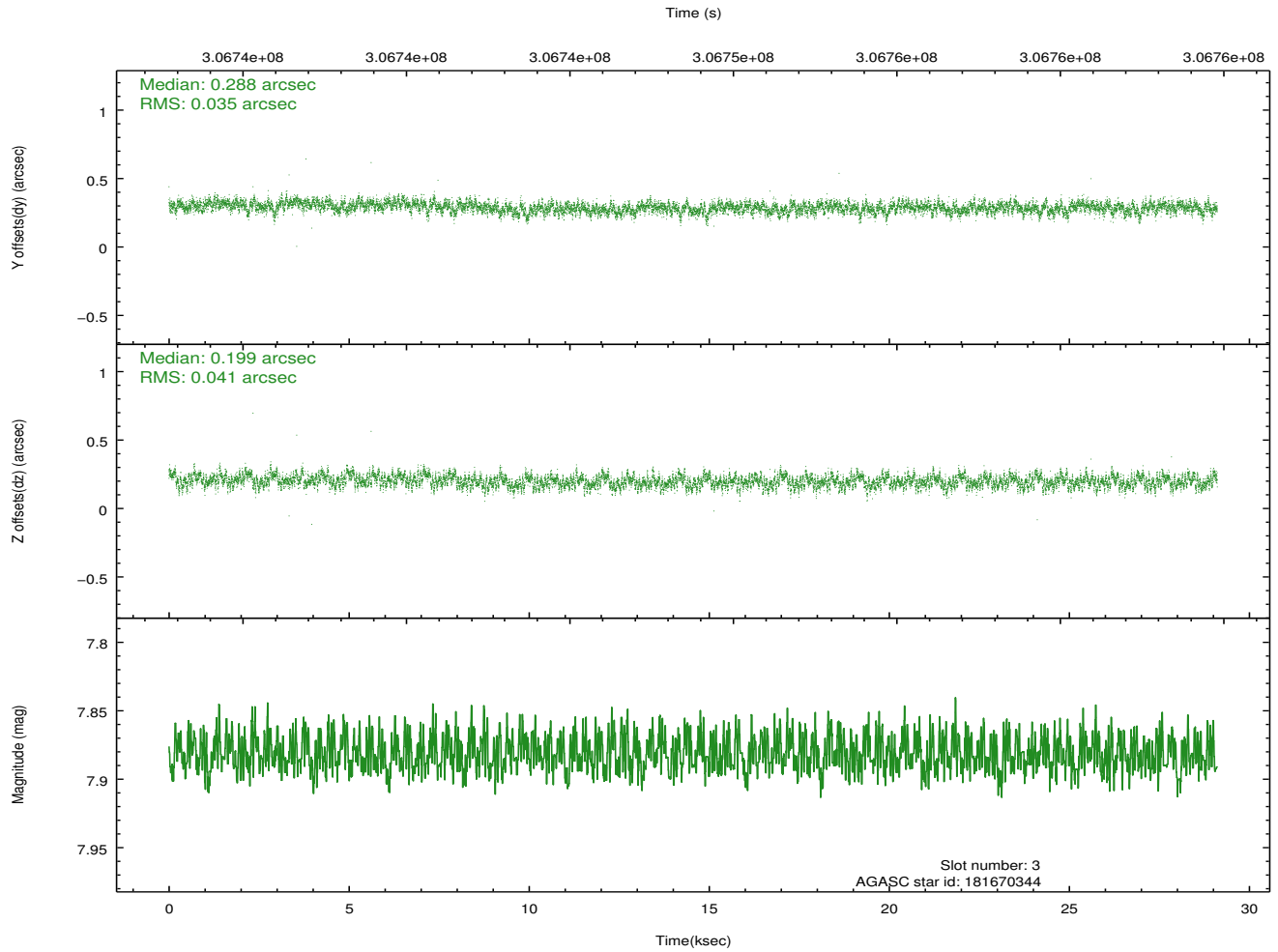
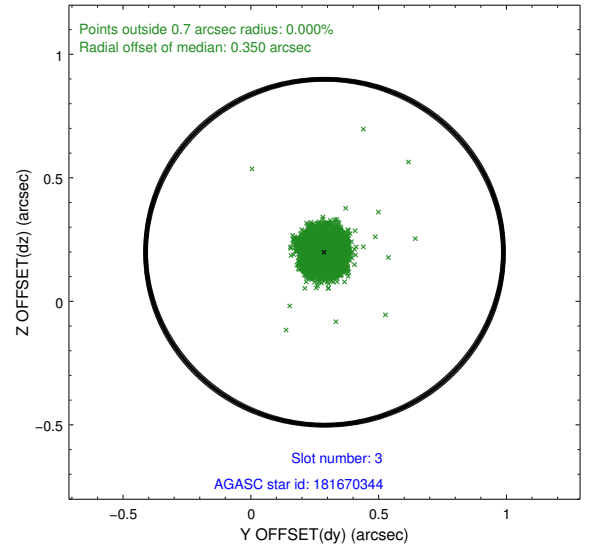
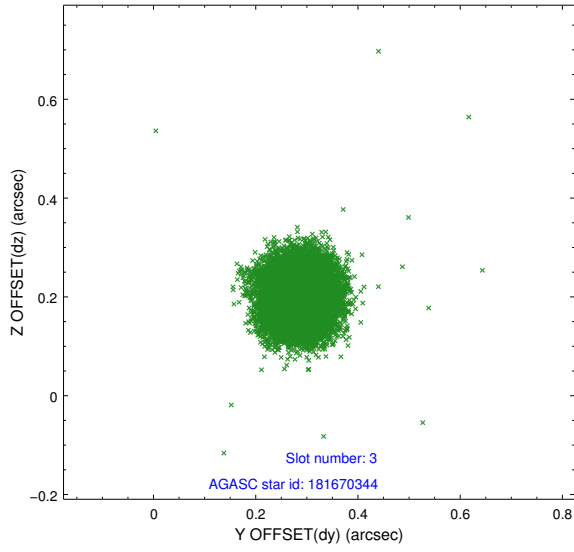


Slot Statistics

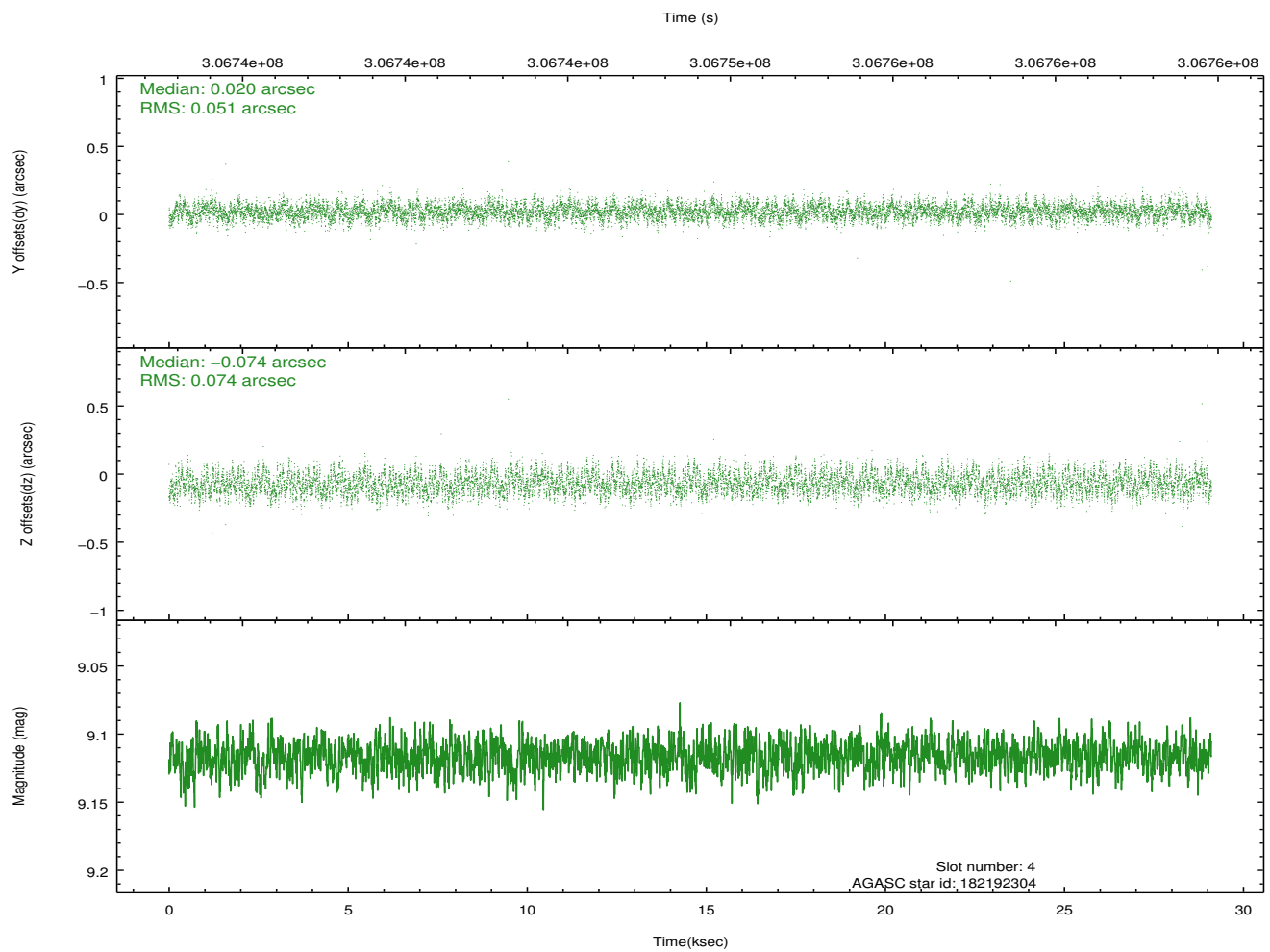
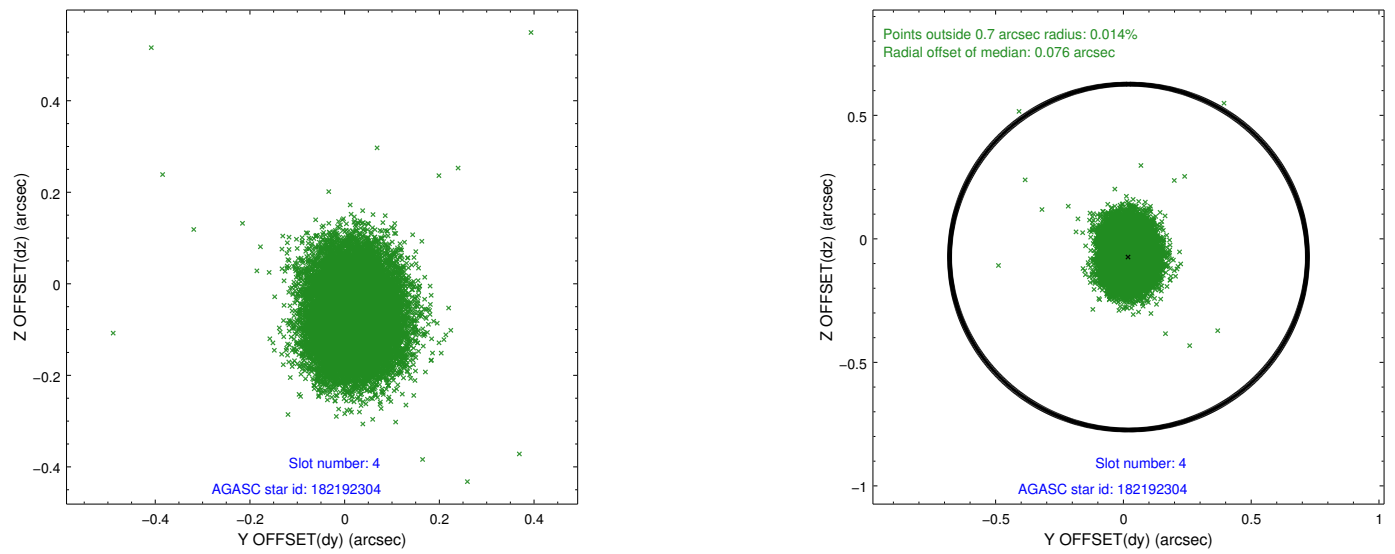
slot	status	id	mag	n_pts	med_dy	med_dz	dr1	dr2	ra	dec	mean_y	mean_z
0	FID	ACIS-I-1	7.23	7101	-0.006	-0.072	0.012	0.073	0.000000	0.000000	926.16	-840.57
1	FID	ACIS-I-4	7.15	7098	0.172	0.077	0.013	0.053	0.000000	0.000000	2146.46	1059.31
2	FID	ACIS-I-5	7.21	7100	-0.265	0.065	0.012	0.022	0.000000	0.000000	-1821.96	1057.32
3	GUIDE	181670344	7.88	14202	0.288	0.199	0.057	0.092	124.942618	20.336943	-1512.83	-798.13
4	GUIDE	182192304	9.12	14193	0.020	-0.074	0.096	0.152	124.313502	21.181082	926.47	1988.64
5	GUIDE	182193072	8.13	14192	-0.077	-0.086	0.076	0.125	124.468170	21.177590	1038.69	1481.51
6	GUIDE	182201632	7.64	14200	-0.220	0.022	0.058	0.092	124.727284	21.494130	2353.51	912.30
7	GUIDE	182202936	7.82	14198	-0.010	-0.065	0.050	0.078	124.849962	21.257255	1625.69	306.76

2.4 Star Slots

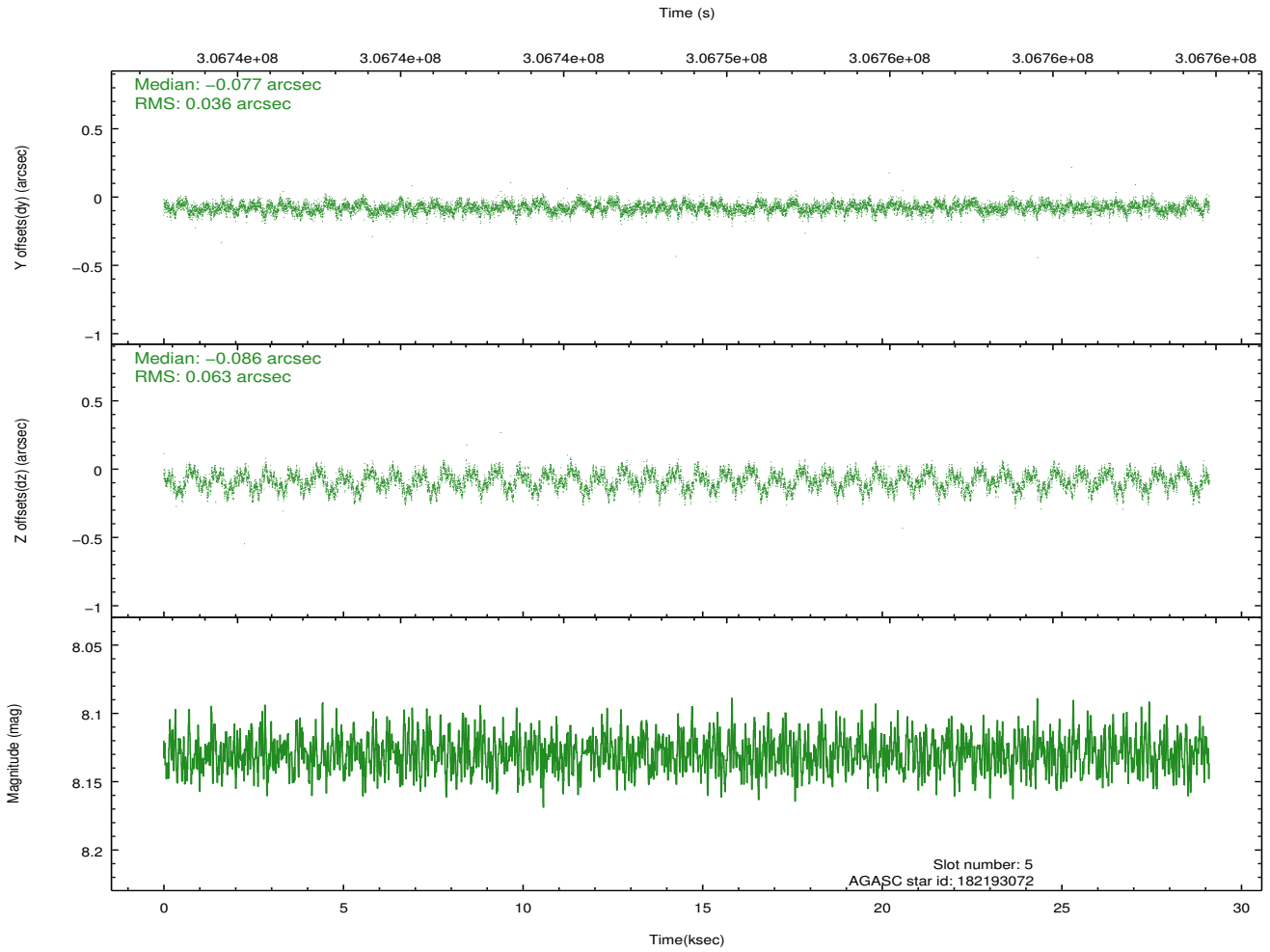
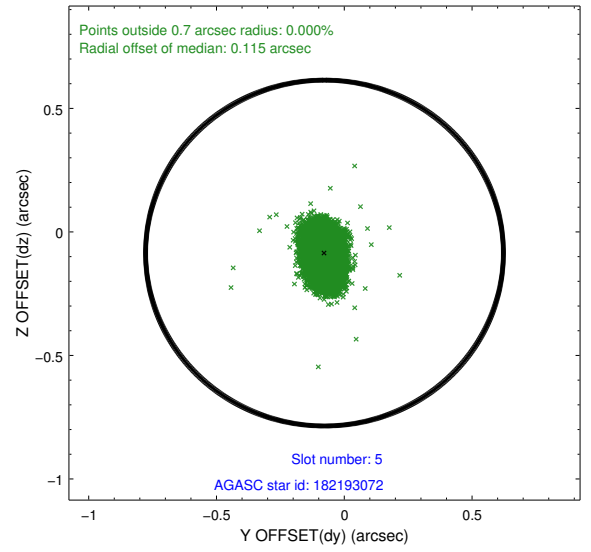
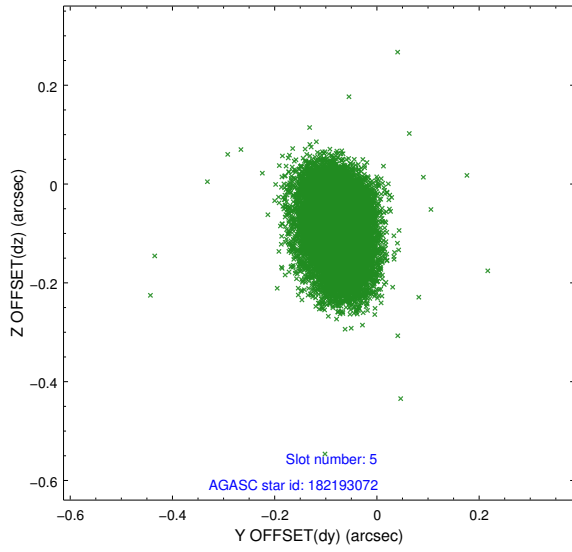
2.4.1 Slot 3



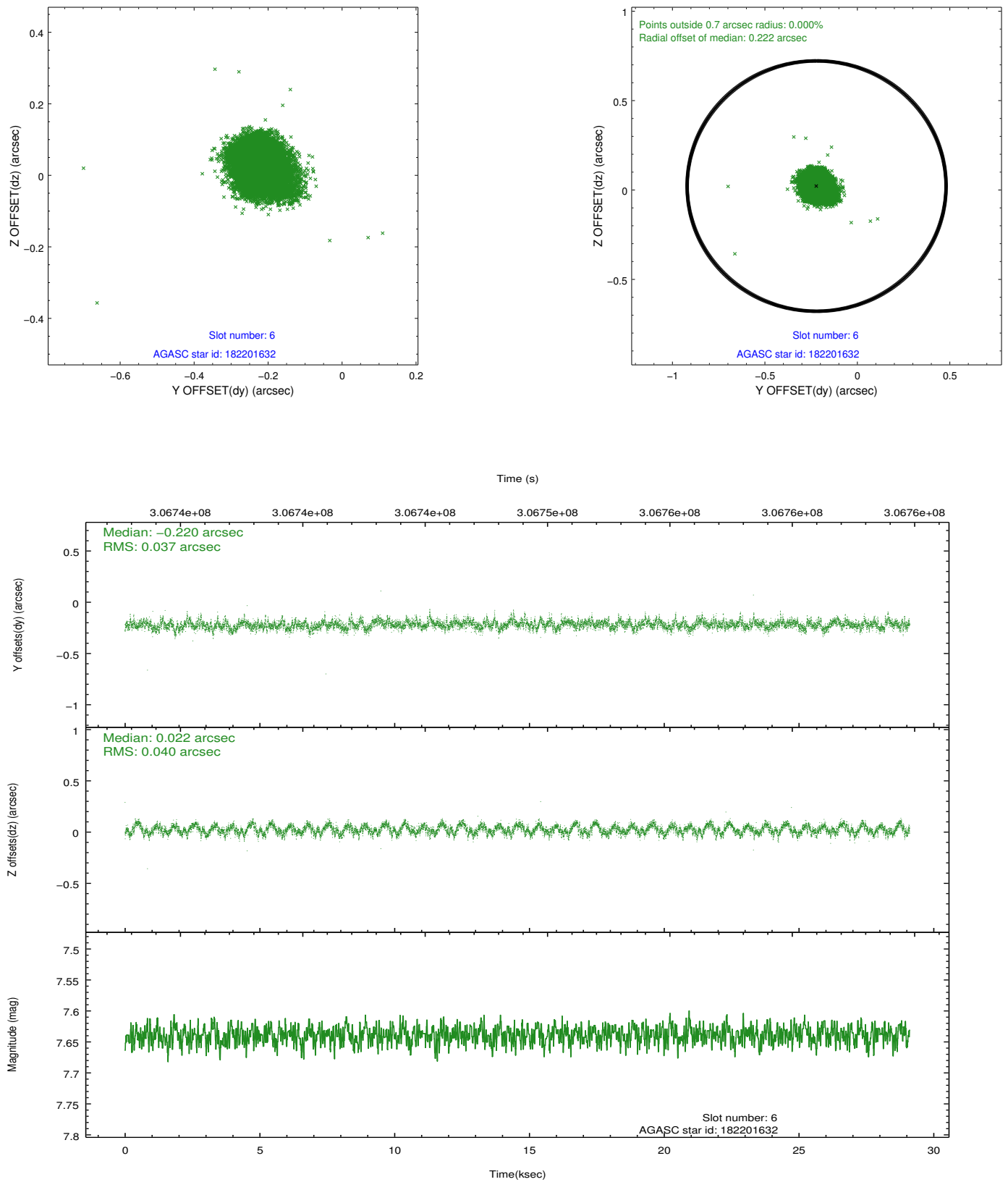
2.4.2 Slot 4



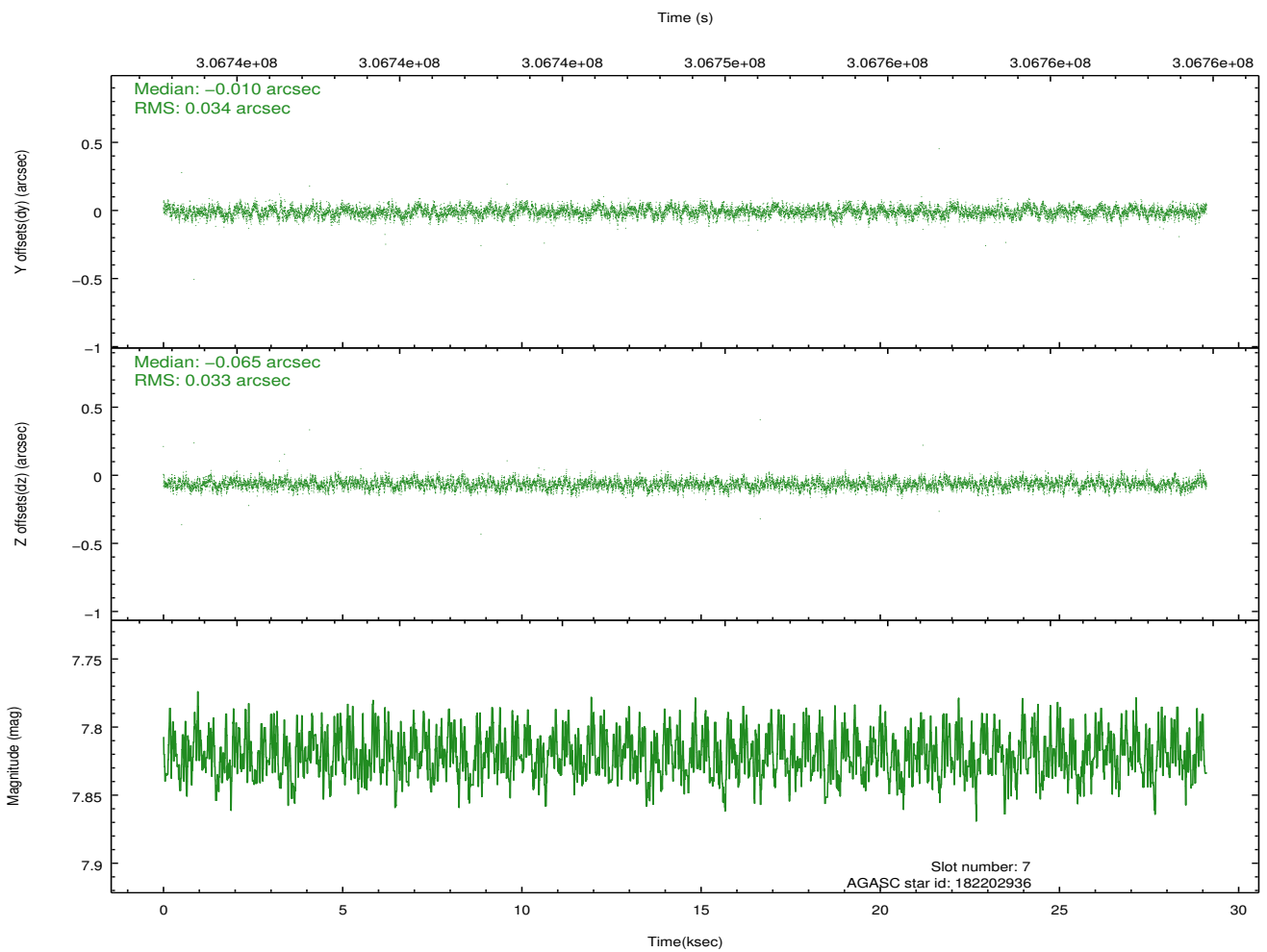
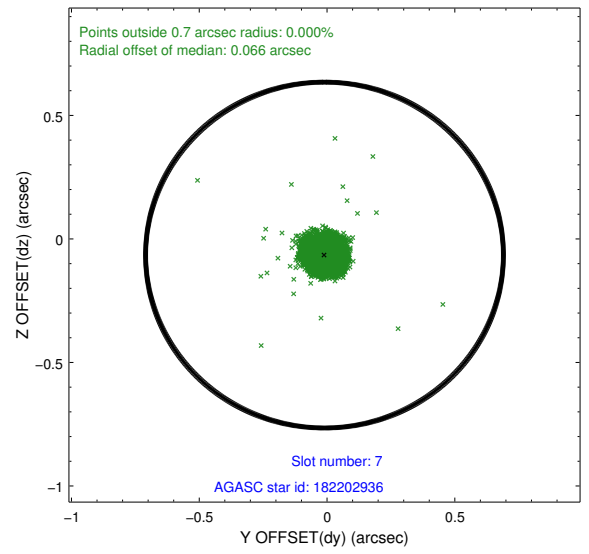
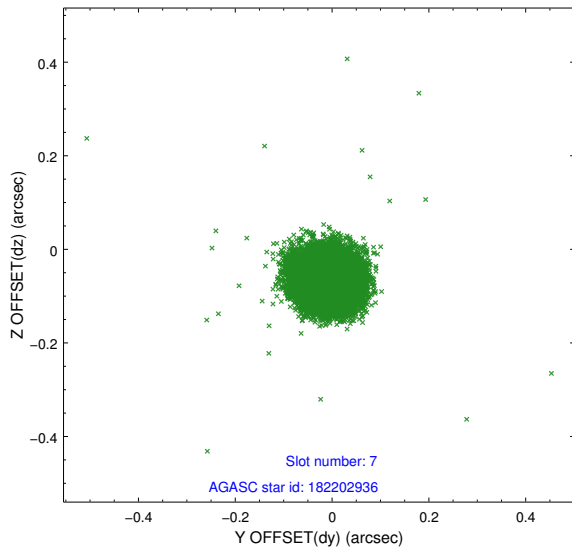
2.4.3 Slot 5



2.4.4 Slot 6

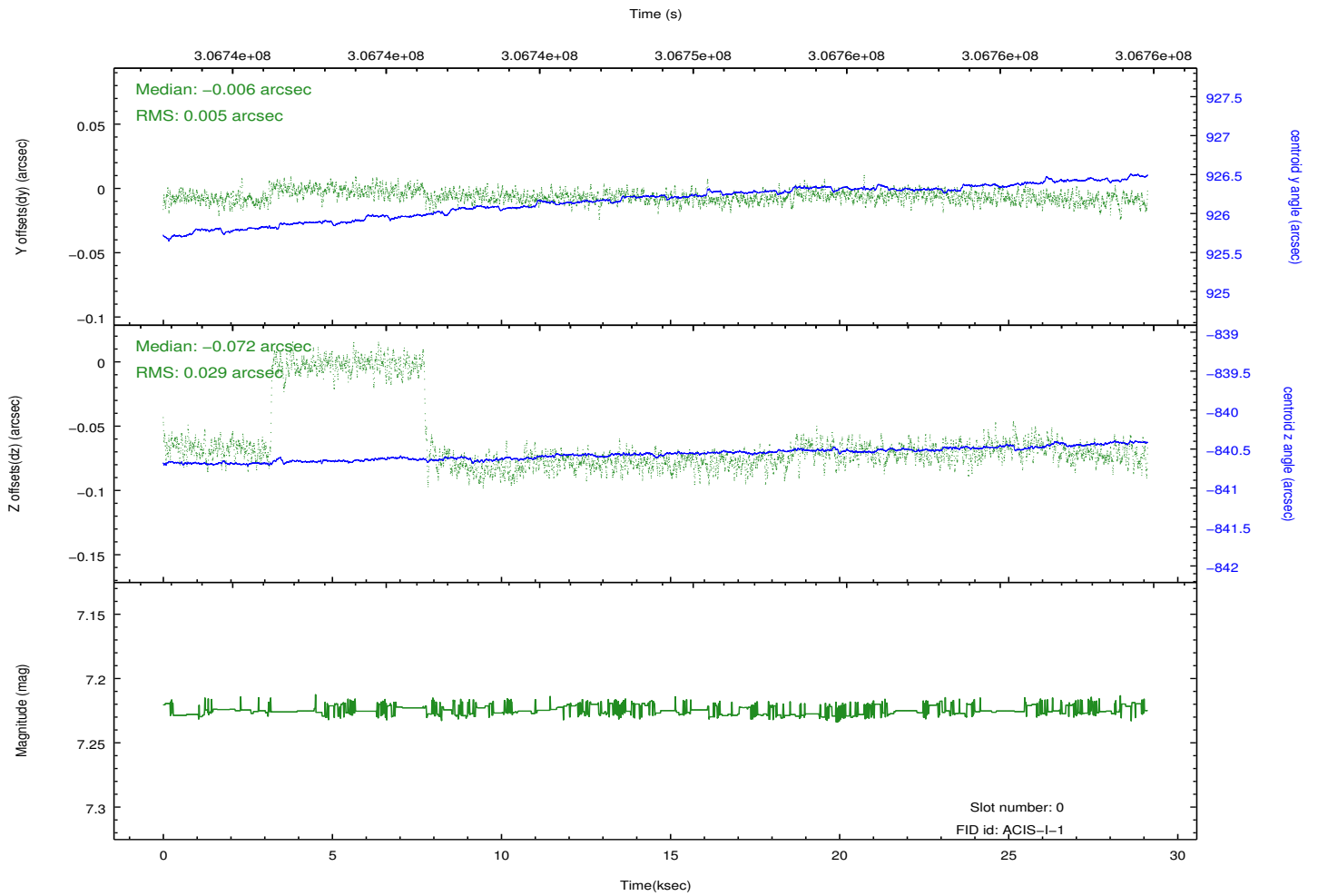
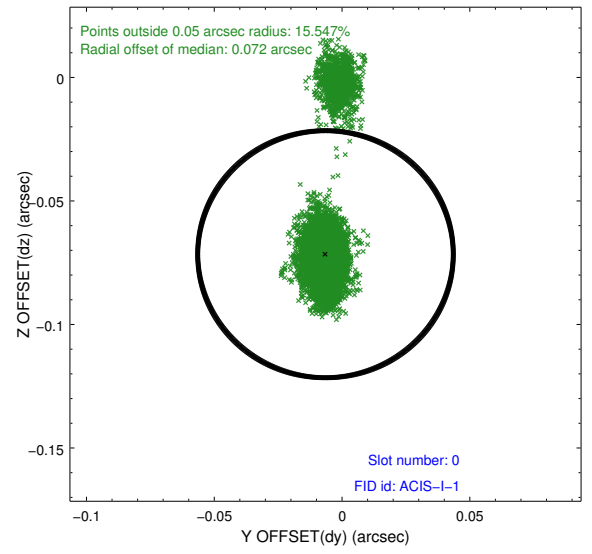
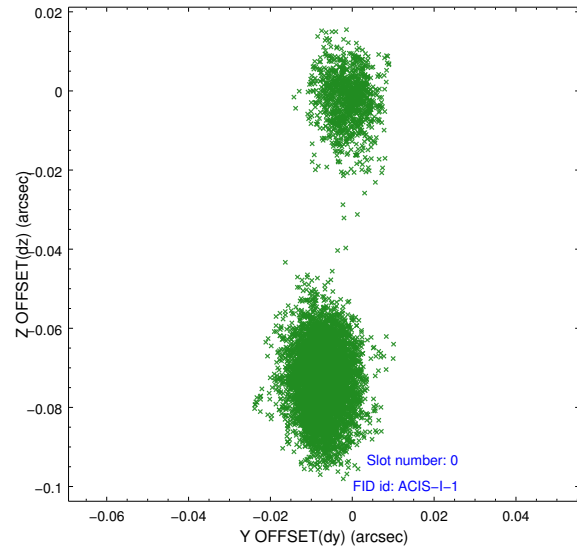


2.4.5 Slot 7

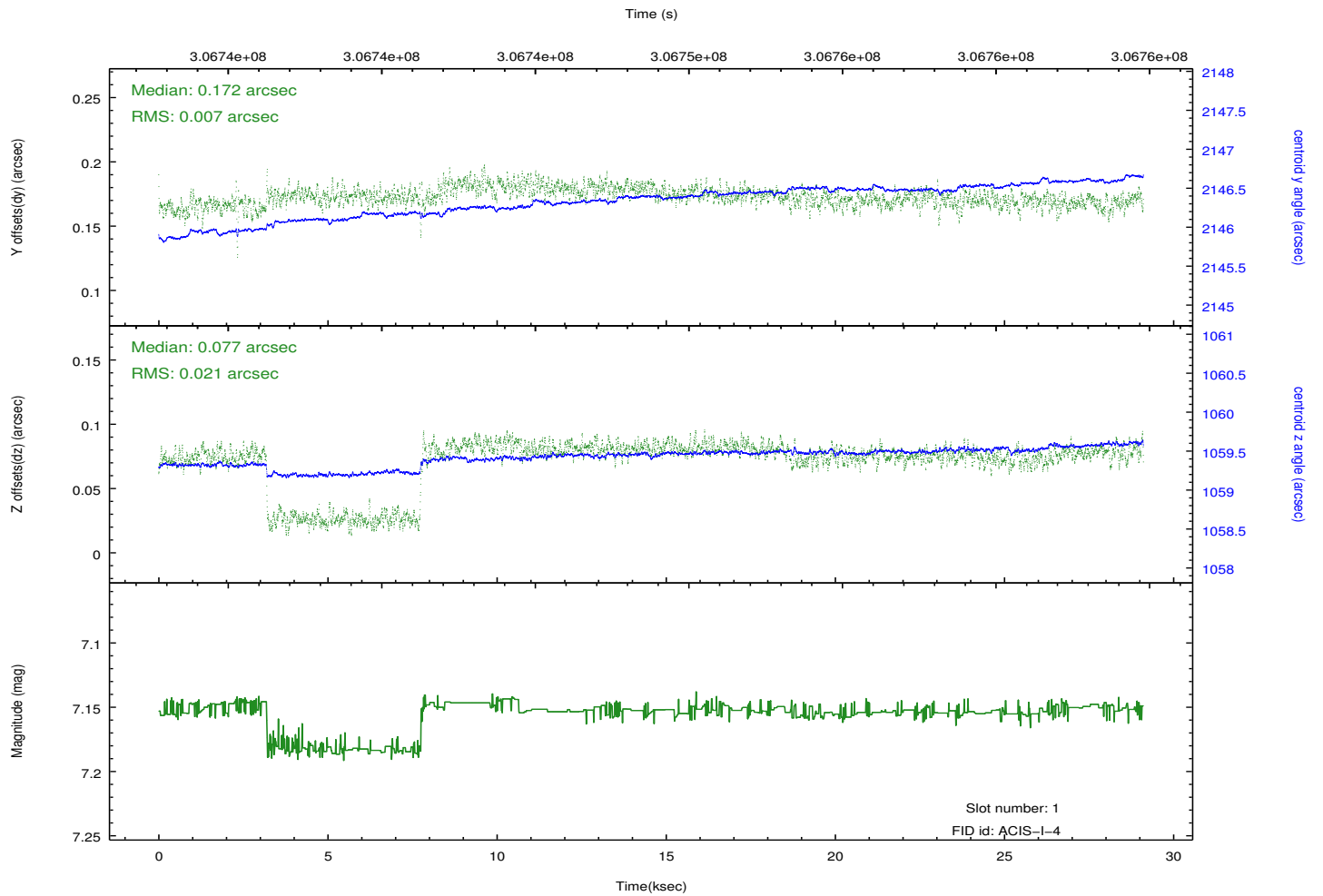
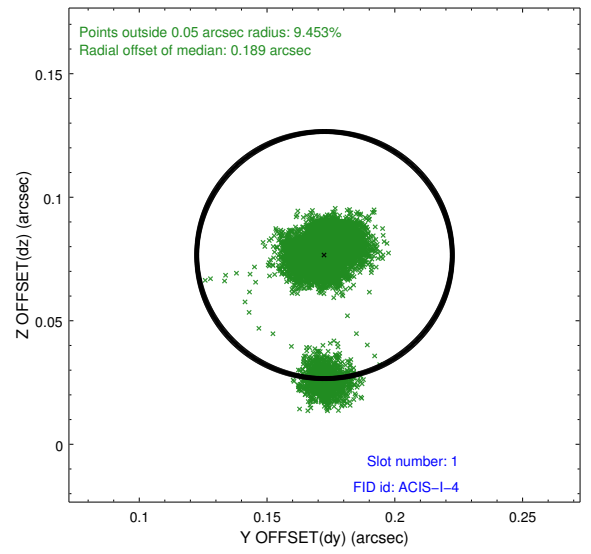
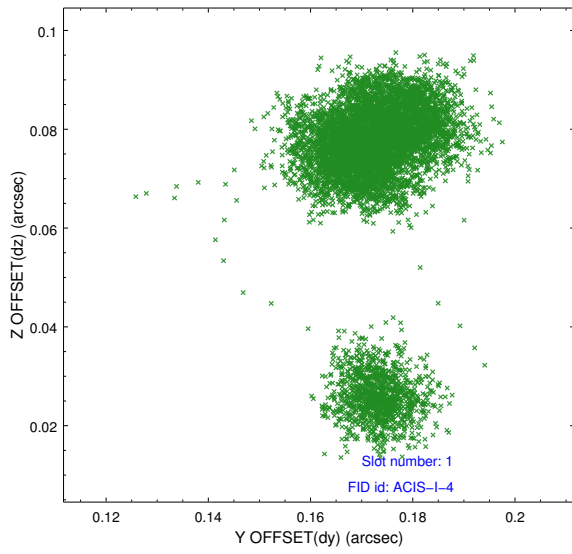


2.5 FID Slots

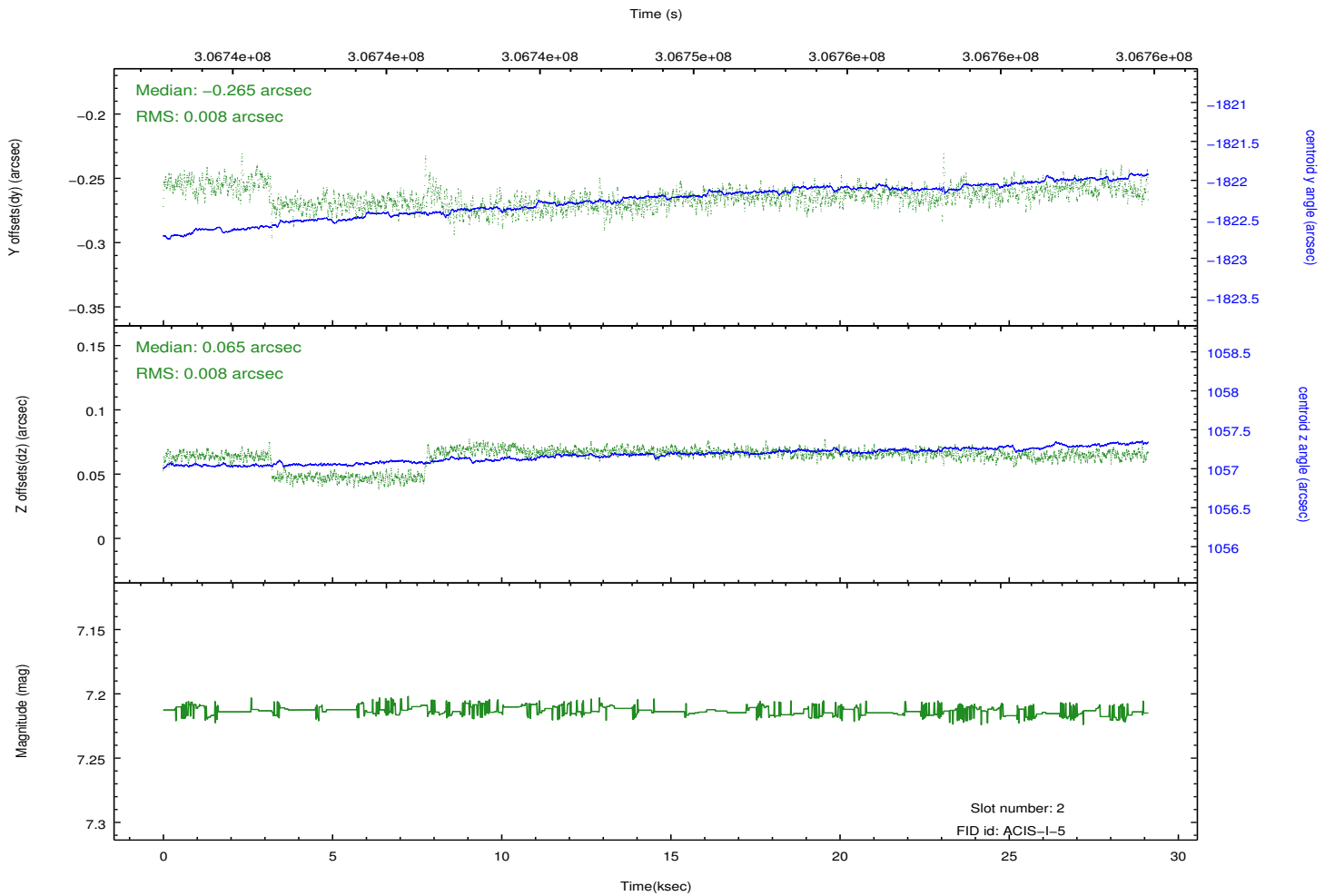
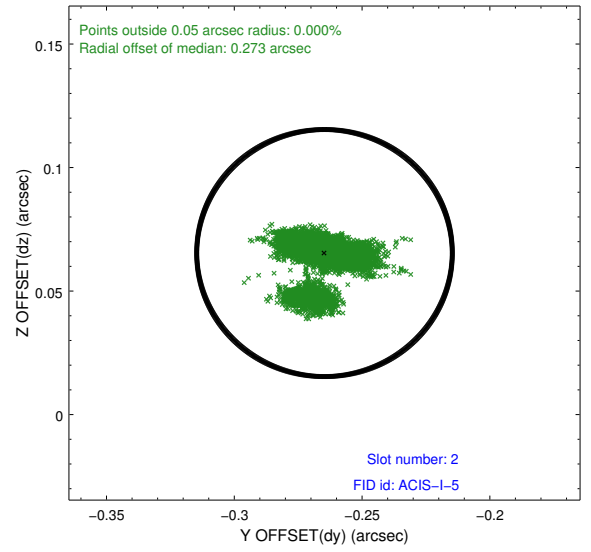
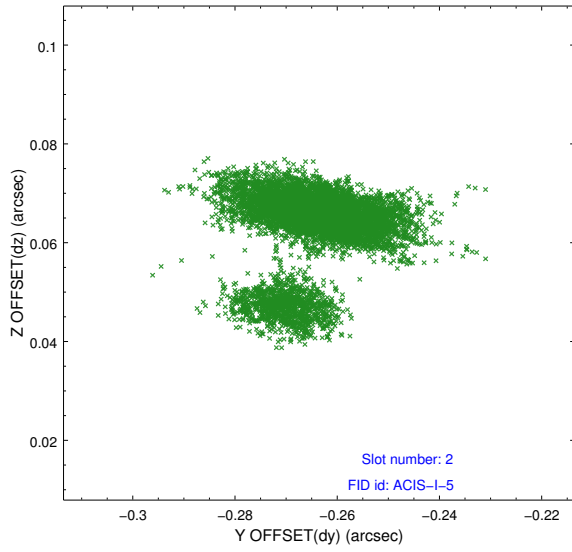
2.5.1 Slot 0



2.5.2 Slot 1



2.5.3 Slot 2



A Summary

A.1 Status

V&V Scientist	Beth Sundheim
V&V Date (YYYY-MM-DD)	2012.05.03
V&V Edition	1
V&V Disposition and Status	OK
V&V Charge Time	28.6935592

A.2 Comments