

# V&V Reference Report

## L2 ASCDS Version : 8.4.4

Observation 8000 - L2 Version 2  
Chandra X-Ray Center

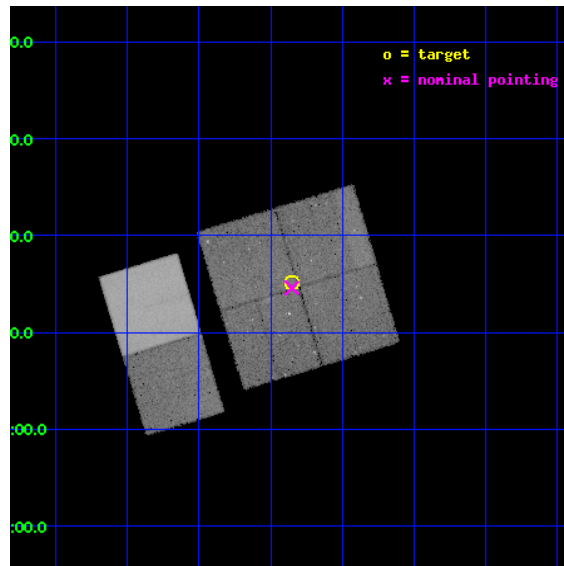
L2 Processing Date : Apr 25 2012

## Contents

<b>1</b>	<b>Front</b>	<b>2</b>
<b>2</b>	<b>OBI</b>	<b>3</b>
2.1	OBI . . . . .	3
2.1.1	Images . . . . .	3
2.1.2	Bias . . . . .	3
2.1.3	Parameters . . . . .	4
2.1.4	Events . . . . .	4
2.2	Compared Parameters . . . . .	5
2.3	Aspect . . . . .	6
2.4	Star Slots . . . . .	9
2.4.1	Slot 3 . . . . .	9
2.4.2	Slot 4 . . . . .	10
2.4.3	Slot 5 . . . . .	11
2.4.4	Slot 6 . . . . .	12
2.4.5	Slot 7 . . . . .	13
2.5	FID Slots . . . . .	14
2.5.1	Slot 0 . . . . .	14
2.5.2	Slot 1 . . . . .	15
2.5.3	Slot 2 . . . . .	16
<b>A</b>	<b>Summary</b>	<b>17</b>
A.1	Status . . . . .	17
A.2	Comments . . . . .	17

# 1 Front

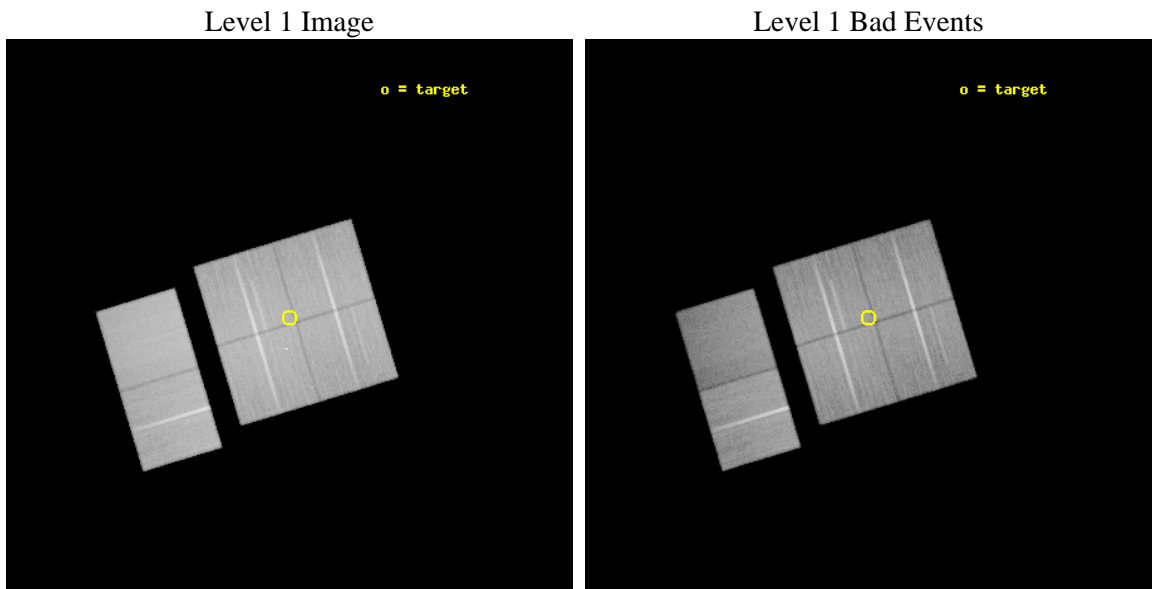
seq_num	900544	Sequence number
obs_id	8000	Observation id
title	THE CHANDRA-COSMOS SURVEY	Proposal title
observer	Dr. Martin Elvis	Principal investigator
object	C-COSMOS2-1	Source name
dtcycle	0	&#160
cycle	P	events from which exps? Prim/Second/Both
ra_targ	150.462917	Observer's specified target RA [deg]
dec_targ	2.251533	Observer's specified target Dec [deg]
ra_nom	150.46298427148	Nominal RA [deg]
dec_nom	2.2434416434801	Nominal Dec [deg]
roll_nom	253.20869274752	Nominal Roll [deg]
revision	2	Processing version of data
ontime	47260.717883348	Sum of GTIs [s]
livetime	46662.274216522	Livetime [s]
ontime0	47267.194213986	Sum of GTIs [s]
ontime1	47260.718072534	Sum of GTIs [s]
ontime2	47267.199823976	Sum of GTIs [s]
ontime3	47260.717883348	Sum of GTIs [s]
ontime6	47260.717863441	Sum of GTIs [s]
ontime7	47267.199823976	Sum of GTIs [s]
l2events	336029	Number of level 2 events



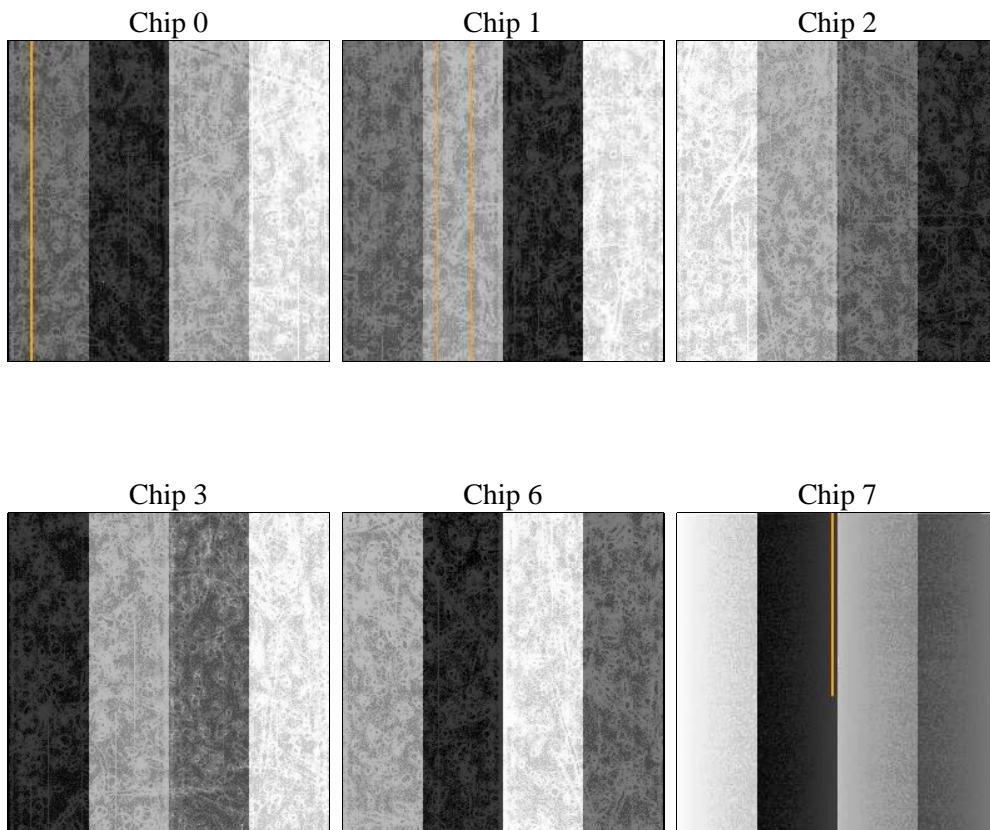
## 2 OBI

### 2.1 OBI

#### 2.1.1 Images



#### 2.1.2 Bias



### 2.1.3 Parameters

obi_num	0	Obi number	sched_exp_time	47200.000000	[s] Scheduled observation exposure time
ascdsver	8.4.4	Processing system revision	ontime	47260.717883348	Sum of GTIs [s]
caldbver	4.4.9	&#160	ontime0	47267.194213986	Sum of GTIs [s]
date	2012-04-25T10:37:42	Date and time of file creation	ontime1	47260.718072534	Sum of GTIs [s]
revision	2	Processing version of data	ontime2	47267.199823976	Sum of GTIs [s]
			ontime3	47260.717883348	Sum of GTIs [s]
			ontime6	47260.717863441	Sum of GTIs [s]
			ontime7	47267.199823976	Sum of GTIs [s]
			l1events	2239625	Number of level 1 events

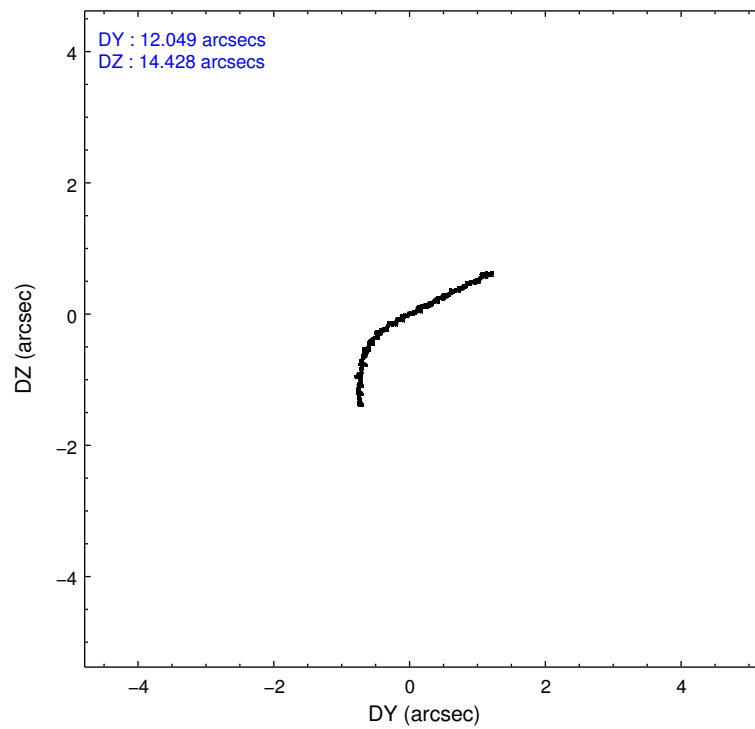
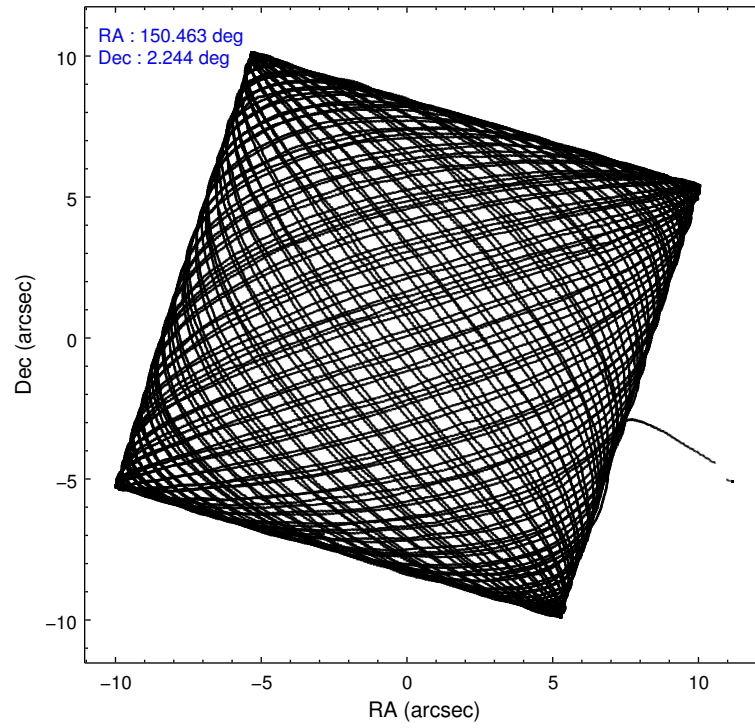
### 2.1.4 Events

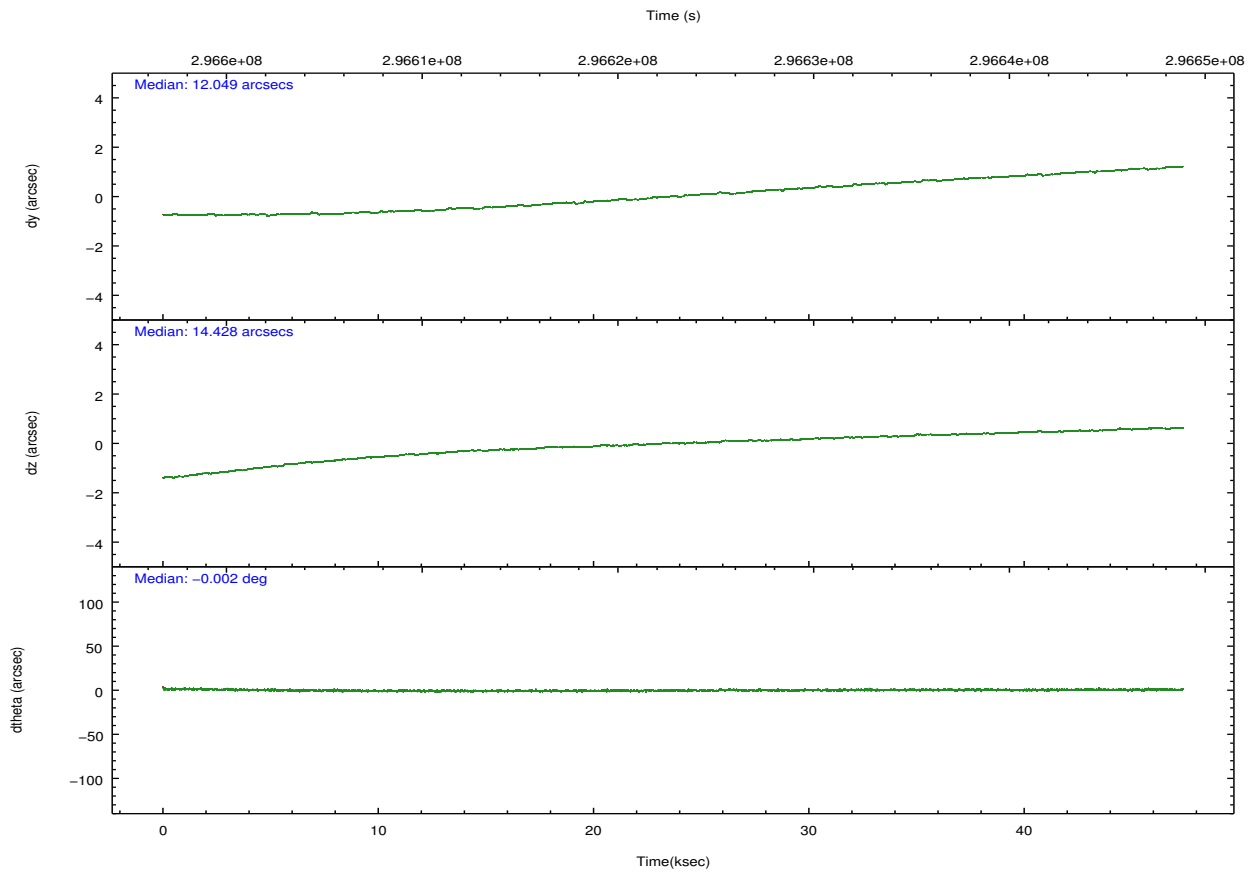
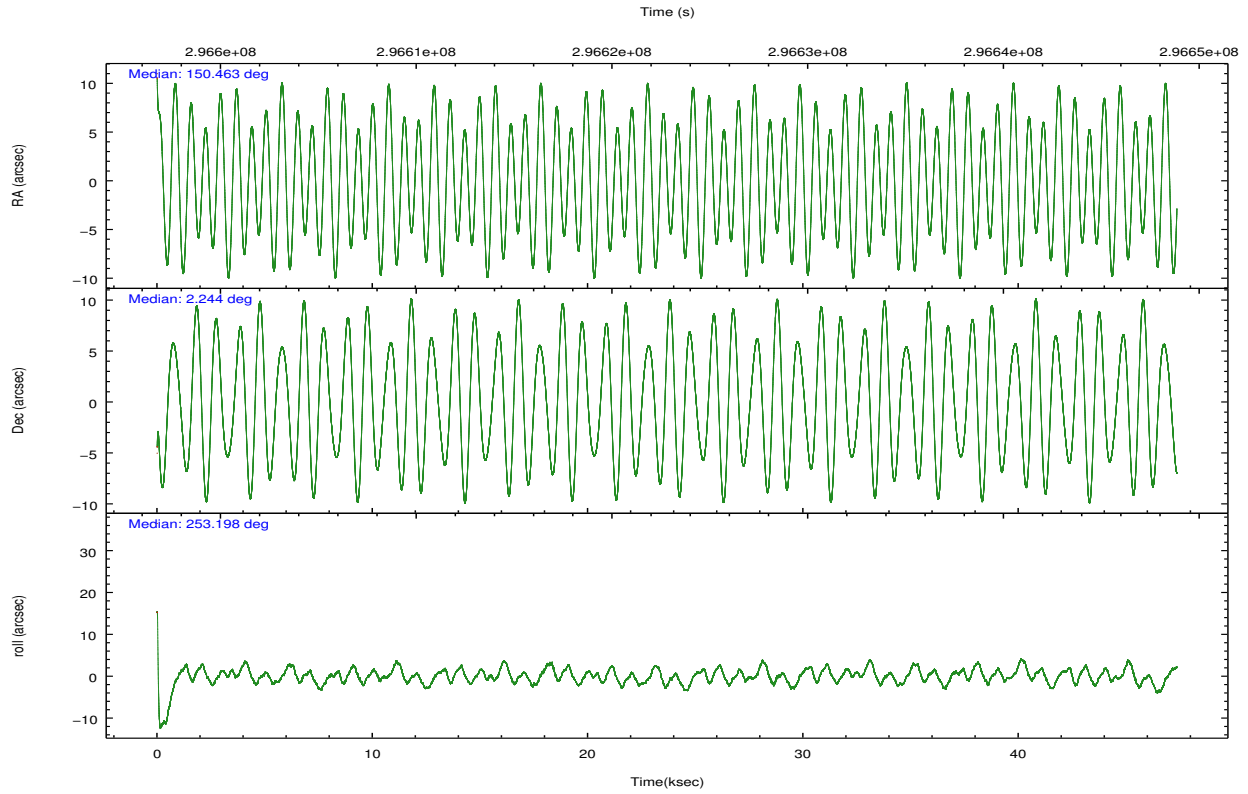
	ccd 0	ccd 1	ccd 2	ccd 3	ccd 6	ccd 7		ccd 0	ccd 1	ccd 2	ccd 3	ccd 6	ccd 7
level 1 events	345700	343233	384631	372779	384443	408839	grade 0 events	12751	14632	14661	12293	12630	17240
rejected events	309344	302532	347113	338391	347082	222210		3%	4%	3%	3%	3%	4%
rejected %	89%	88%	90%	90%	90%	54%	grade 1 events	188	150	246	205	205	500
								0%	0%	0%	0%	0%	0%
							grade 2 events	8692	9176	8574	7314	8130	37576
								2%	2%	2%	1%	2%	9%
							grade 3 events	4166	4403	3809	3899	4069	17196
								1%	1%	0%	1%	1%	4%
							grade 4 events	3763	4221	3953	3917	4207	16818
								1%	1%	1%	1%	1%	4%
							grade 5 events	12295	13597	11779	14508	14980	43190
								3%	3%	3%	3%	3%	10%
							grade 6 events	6990	8280	6524	6972	8329	97829
								2%	2%	1%	1%	2%	23%
							grade 7 events	296855	288774	335085	323671	331893	178490
								85%	84%	87%	86%	86%	43%

## 2.2 Compared Parameters

Parameter	Planned	Actual	Parameter	Planned	Actual
Instrument	ACIS	ACIS	Obspar format version number	7	7
Detector	ACIS-012367	ACIS-012367	Obspar file type	PREDICTED	ACTUAL
Grating	NONE	NONE	Obspar update status	NONE	UPDATED
Data mode	VFAINT	VFAINT	CCD I0 on	Y	Y
Observation mode	POINTING	POINTING	CCD I1 on	Y	Y
[deg] Pointing RA	150.456588	150.4629842714821	CCD I2 on	Y	Y
[deg] Pointing Dec	2.270192	2.243441643480085	CCD I3 on	Y	Y
[deg] Pointing Roll	253.000253	253.2086927475185	CCD S0 on	N	N
[mm] SIM focus pos	-0.782348	-0.7809083437167272	CCD S1 on	N	N
[mm] SIM defocus	0	0.001439871863259334	CCD S2 on	O1	Y
[mm] SIM translation stage pos	-233.592463	-233.5874344608287	CCD S3 on	O2	Y
[mm] SIM translation stage offset	0	-0.005018542100998502	CCD S4 on	N	N
[s] Observation start time (MET)	296599311.184000	296598290.41707	CCD S5 on	N	N
Observation start date	2007-05-26T20:40:46	2007-05-26T20:24:50	Number of optional ACIS chips dropped	0	0
[s] Observation end time (MET)	296646511.184000	296647442.75692	On-chip summing requested	N	N
Observation end date	2007-05-27T09:47:26	2007-05-27T10:04:02	Subarray requested	NONE	NONE
Read mode	TIMED	TIMED	Alternating exposures requested	N	N
			[s] Primary exposure time	0.000000	3.2

## 2.3 Aspect



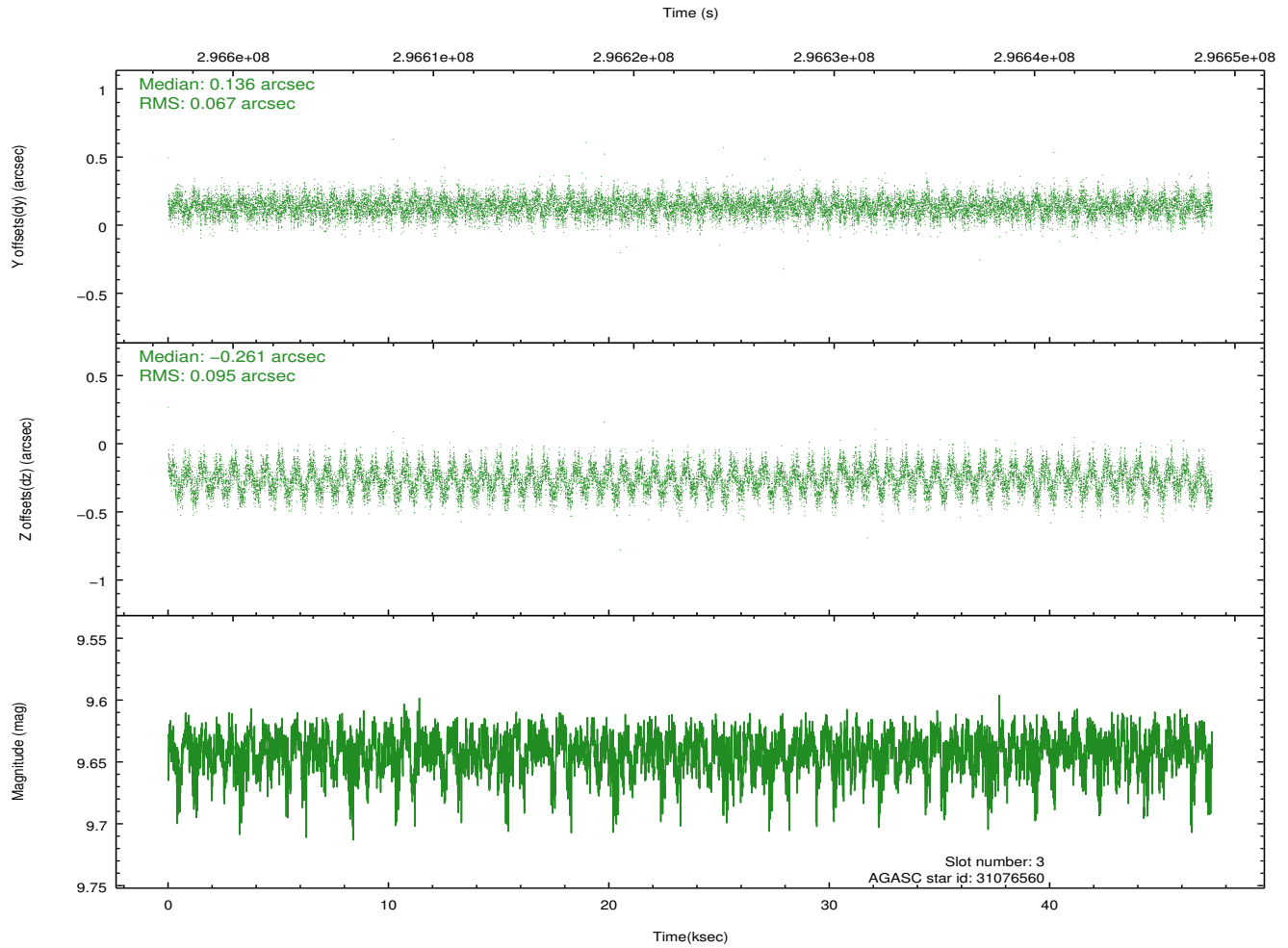
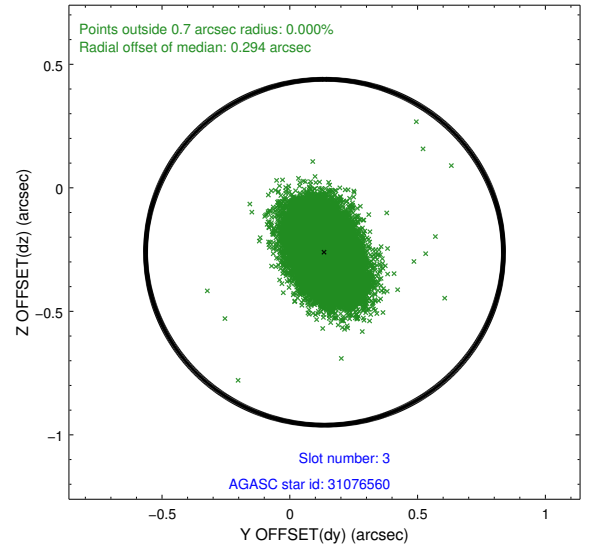
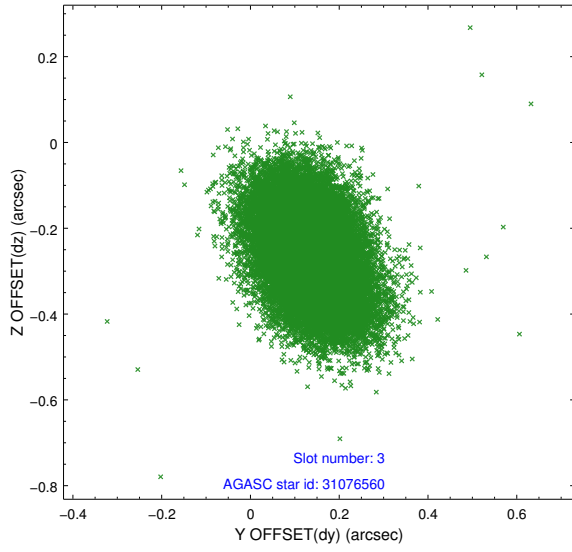


### Slot Statistics

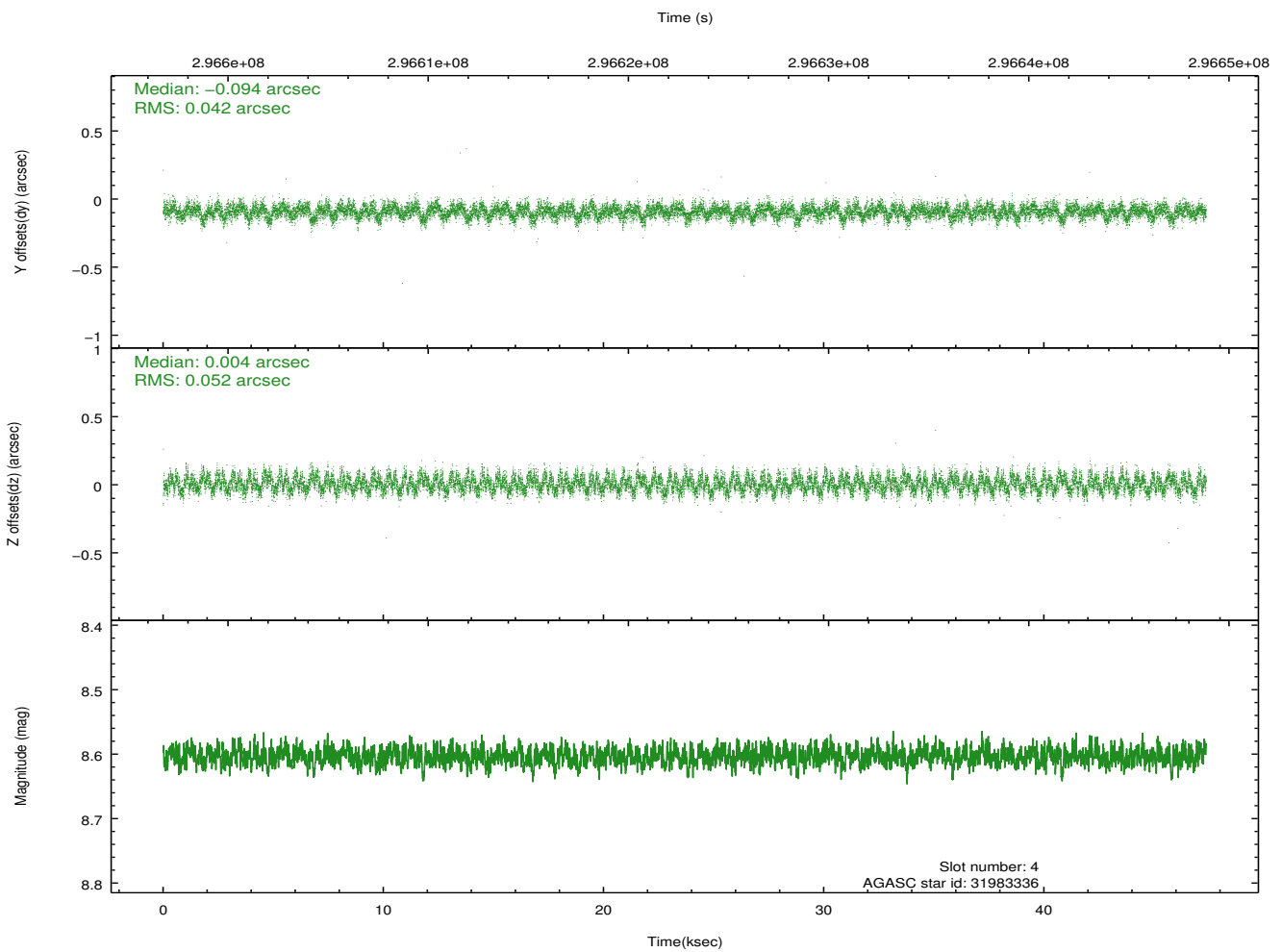
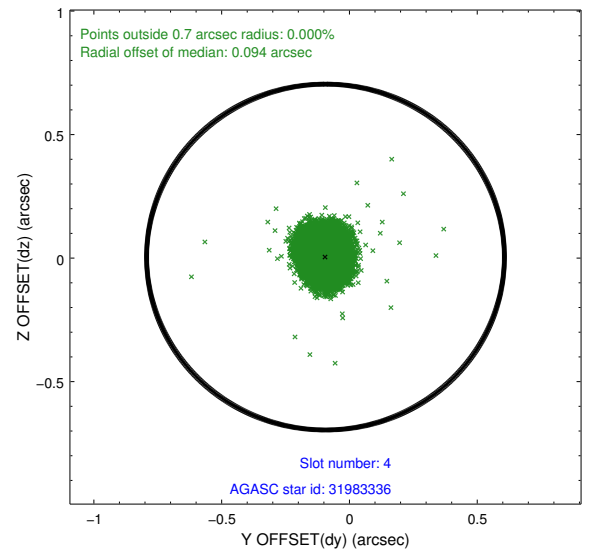
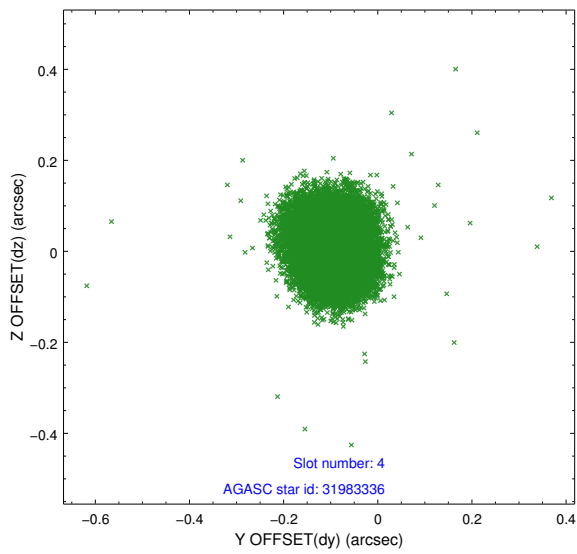
slot	status	id	mag	n_pts	med_dy	med_dz	dr1	dr2	ra	dec	mean_y	mean_z
0	FID	ACIS-I-1	7.23	11551	-0.013	0.022	0.014	0.025	0.000000	0.000000	927.41	-837.89
1	FID	ACIS-I-4	7.16	11551	0.172	0.014	0.019	0.028	0.000000	0.000000	2147.64	1061.91
2	FID	ACIS-I-5	7.22	11548	-0.258	0.034	0.015	0.027	0.000000	0.000000	-1820.84	1059.79
3	GUIDE	31076560	9.64	23074	0.136	-0.261	0.123	0.202	149.884782	2.009277	1500.29	-1692.62
4	GUIDE	31983336	8.60	23090	-0.094	0.004	0.071	0.113	150.429924	2.291234	-44.19	-113.91
5	GUIDE	31985760	8.46	23097	-0.081	0.103	0.072	0.114	150.924581	2.094394	112.76	1795.10
6	GUIDE	31986152	9.01	23095	0.136	0.243	0.106	0.169	150.840314	2.057585	328.39	1544.03
7	GUIDE	32374896	9.22	23090	-0.093	-0.088	0.070	0.115	150.682269	2.512794	-1072.39	520.75

## 2.4 Star Slots

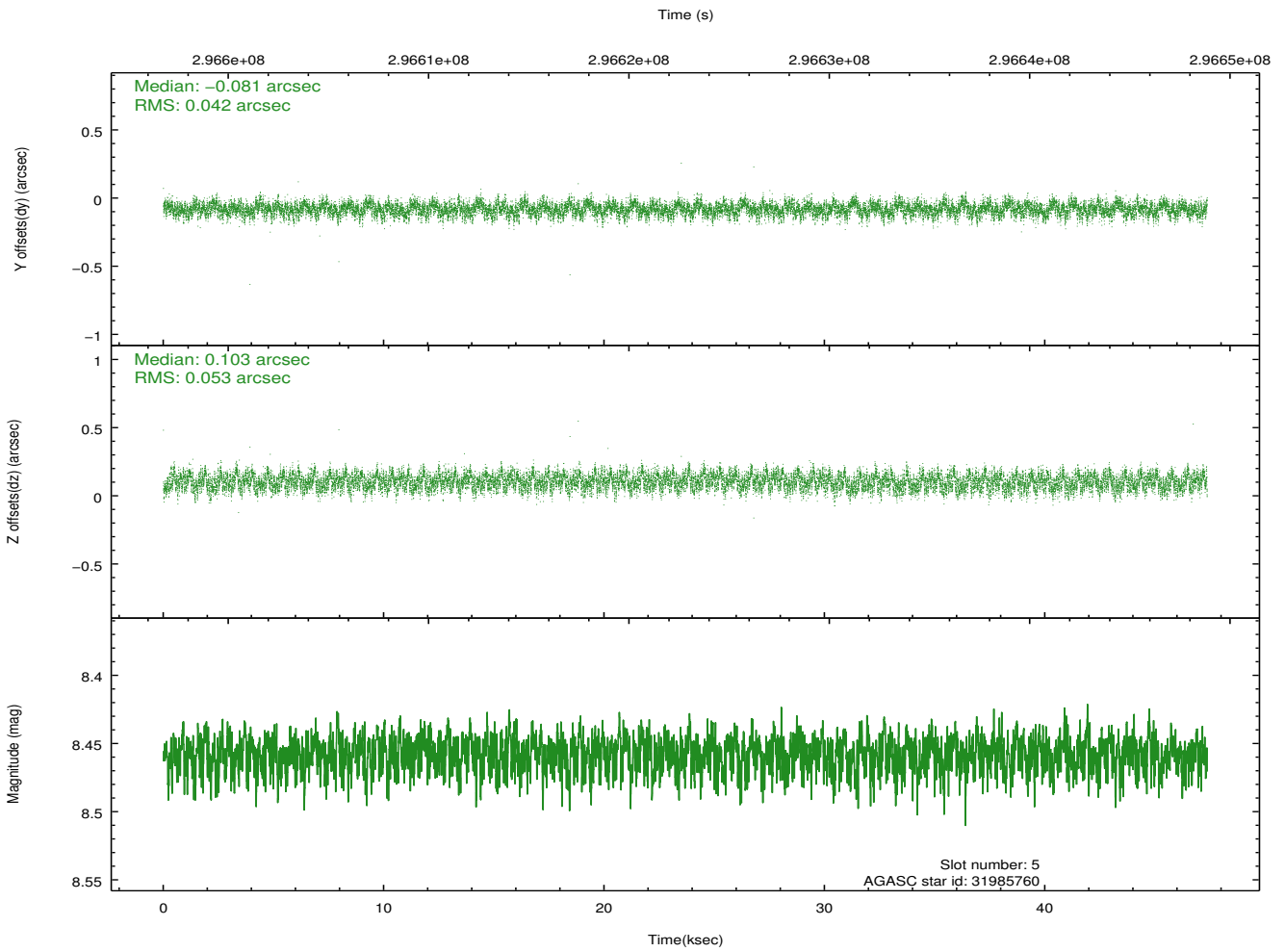
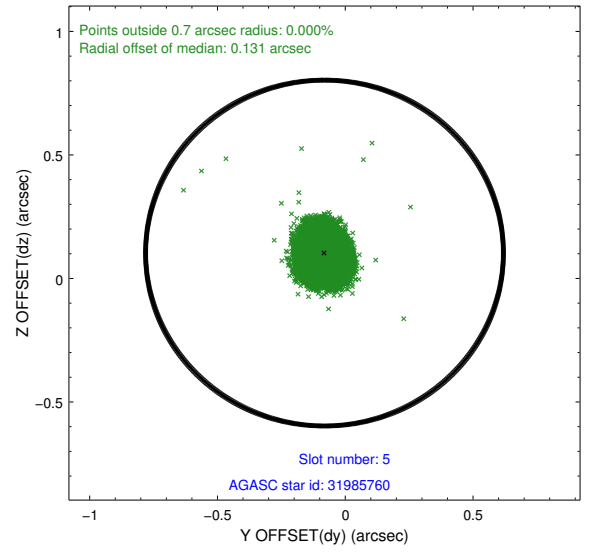
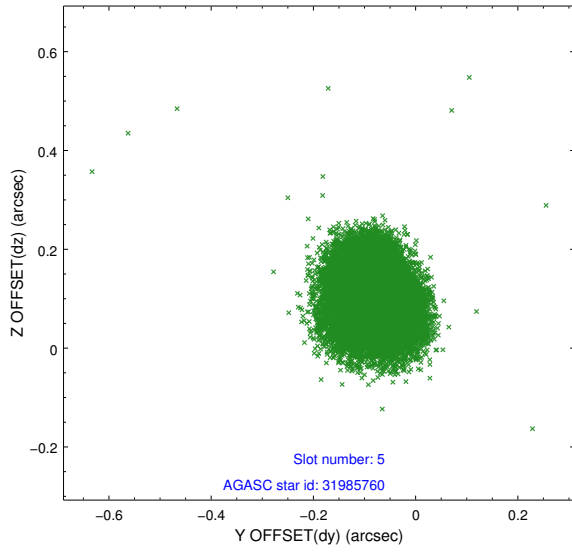
### 2.4.1 Slot 3



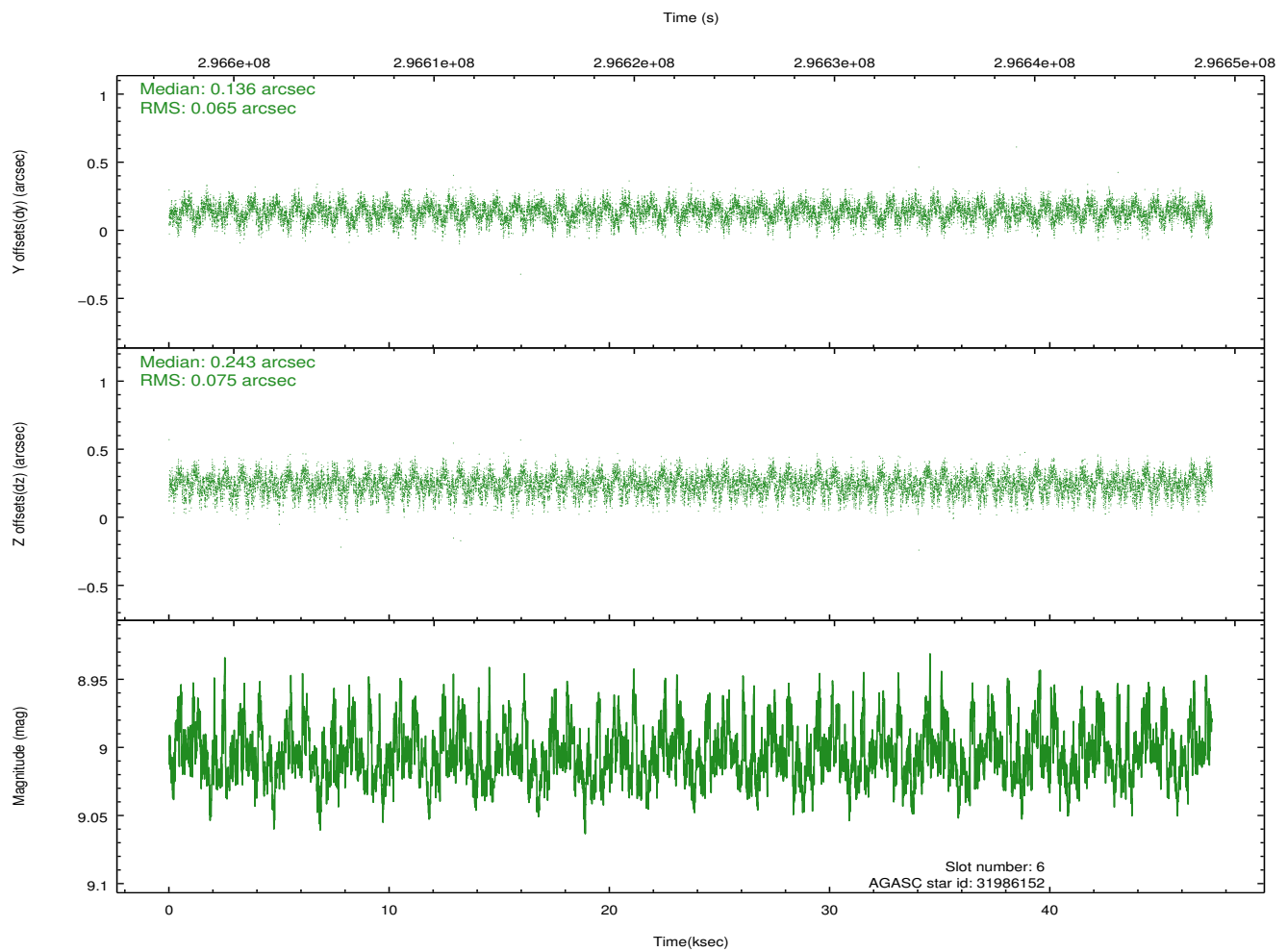
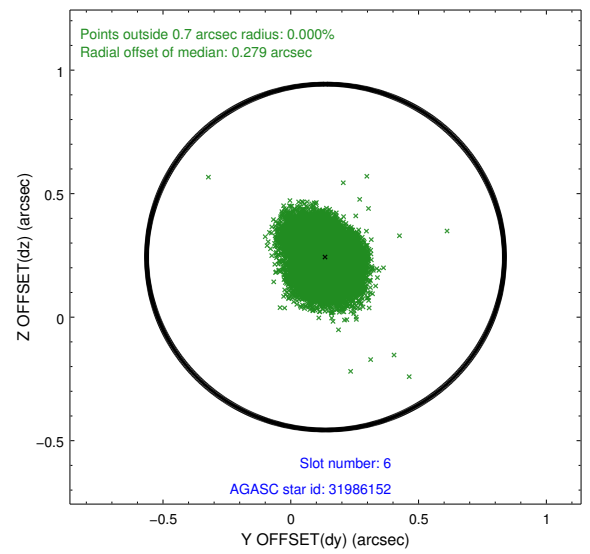
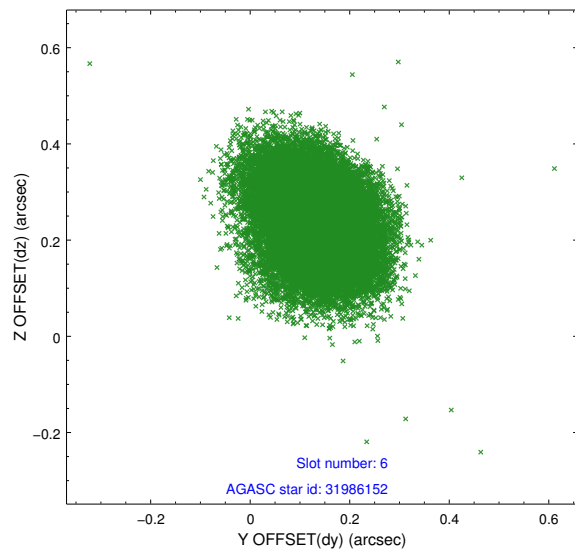
## 2.4.2 Slot 4



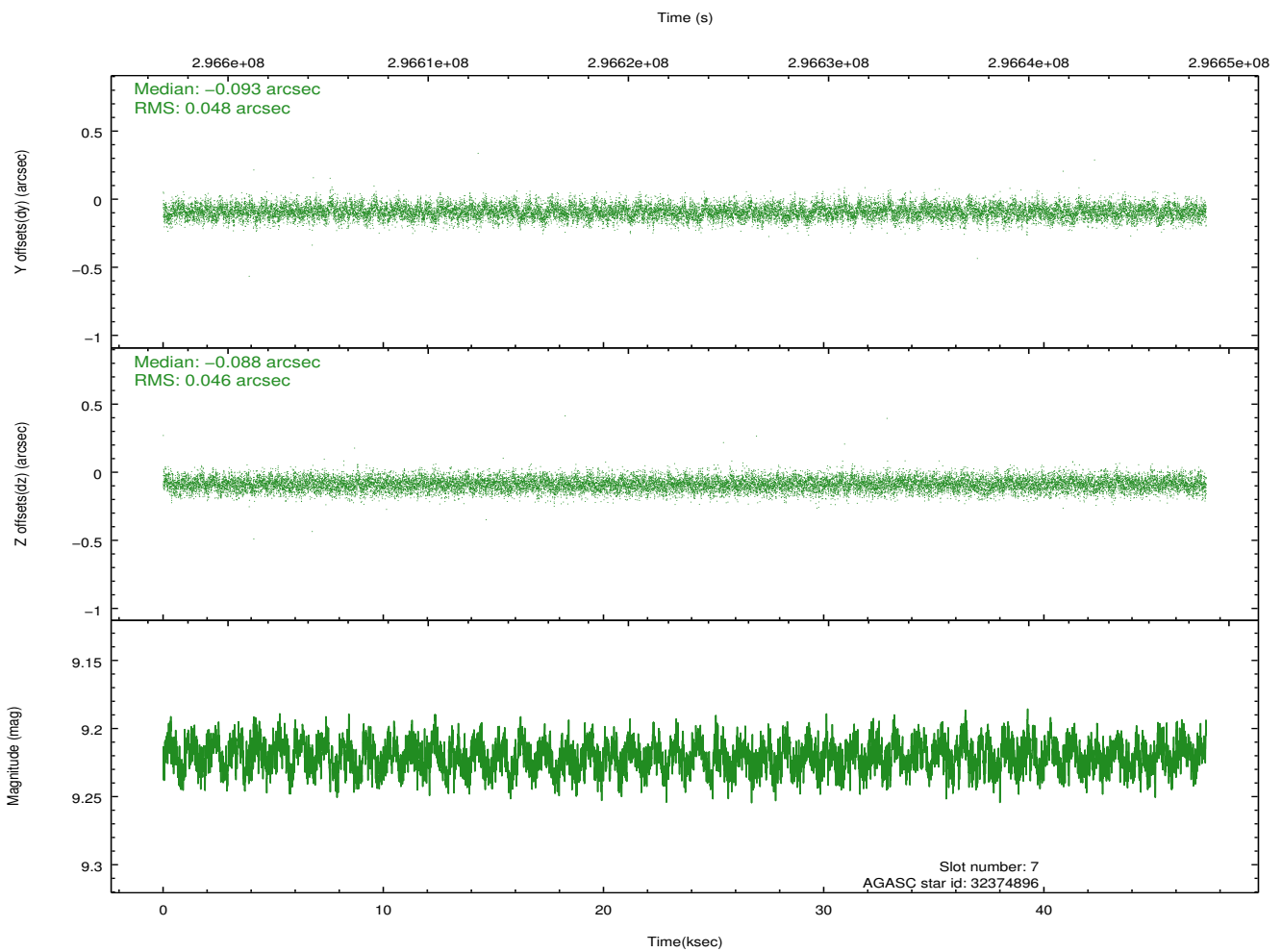
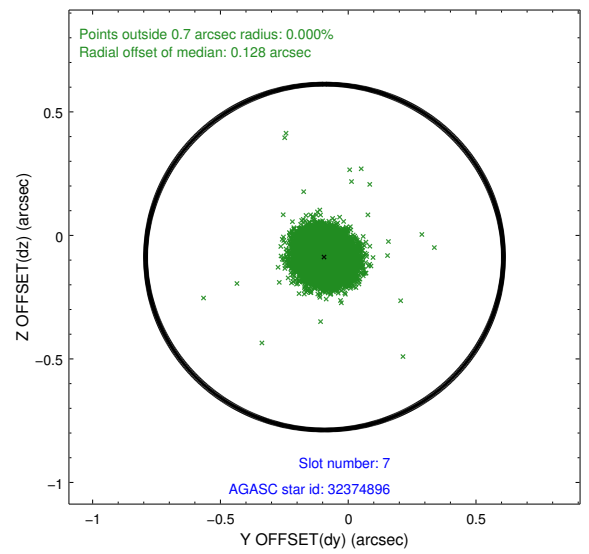
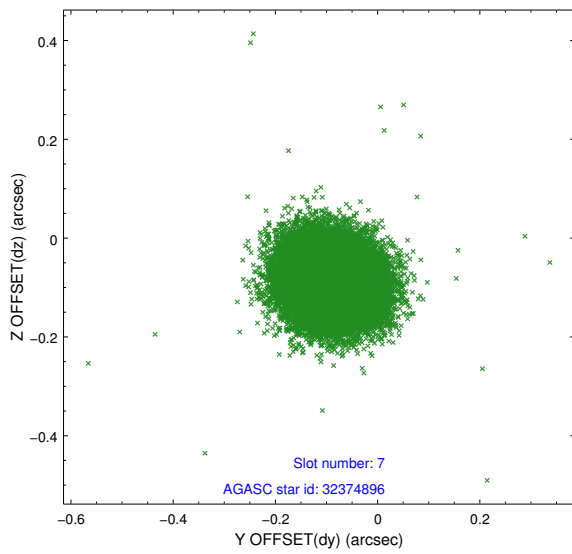
### 2.4.3 Slot 5



## 2.4.4 Slot 6

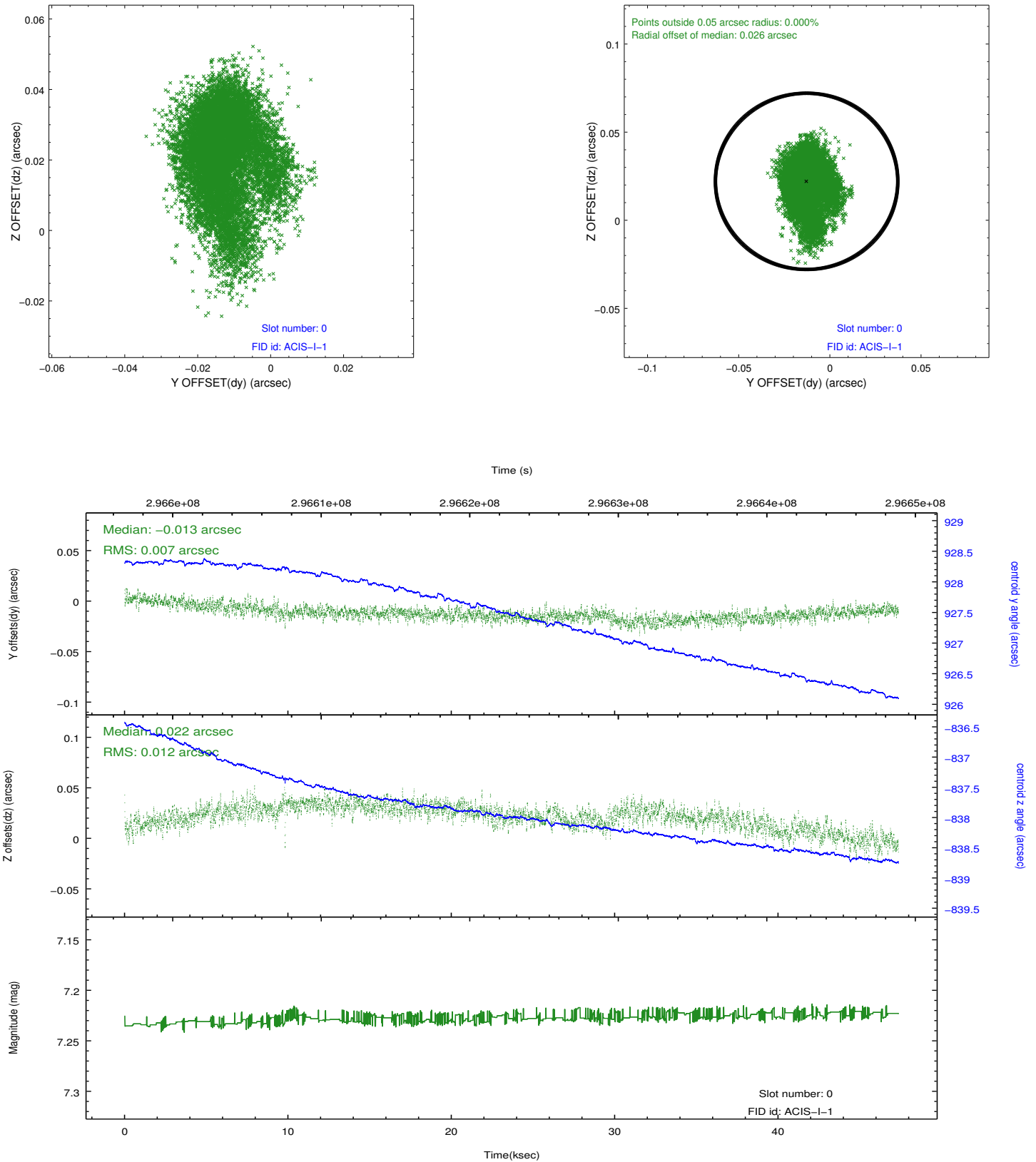


## 2.4.5 Slot 7

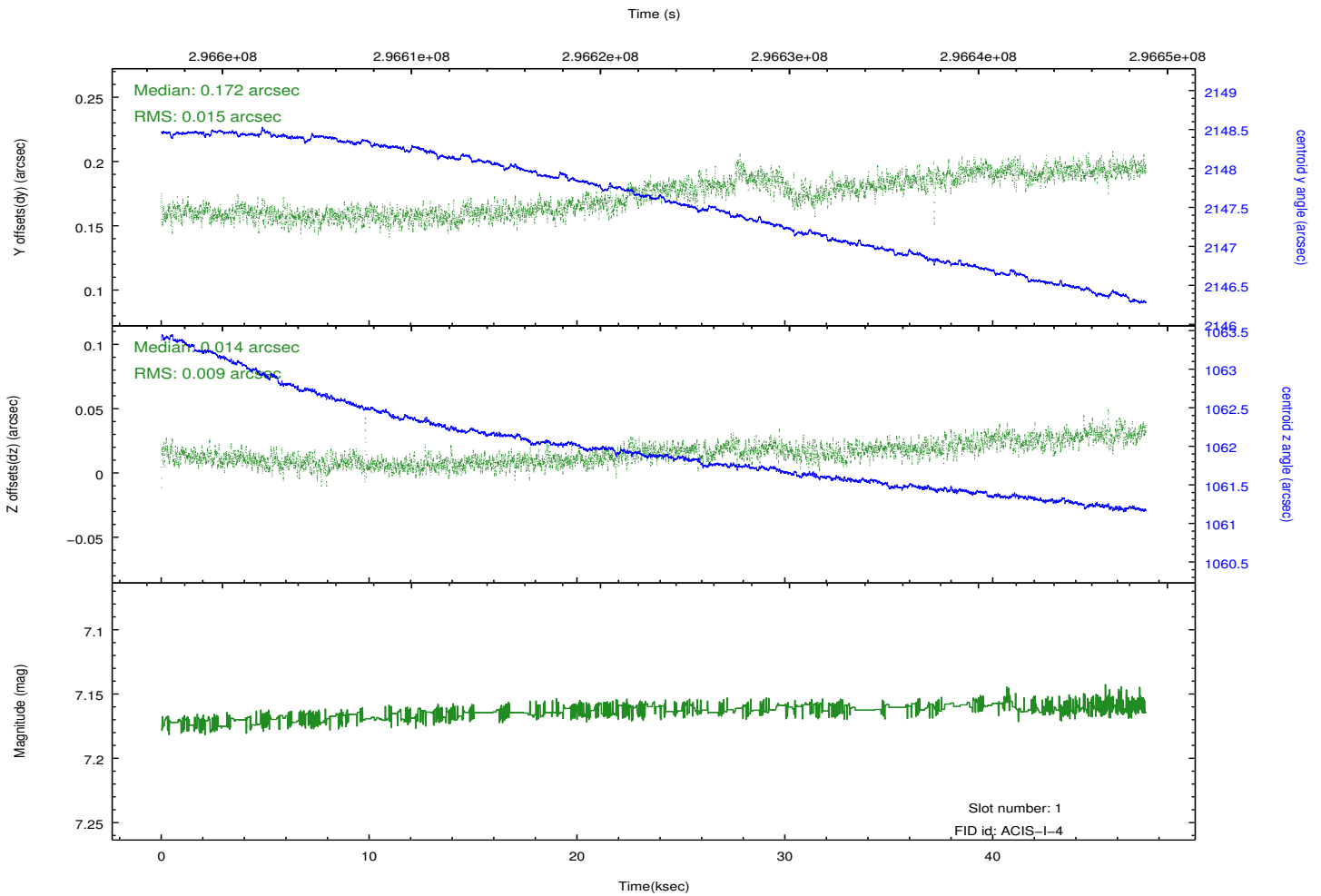
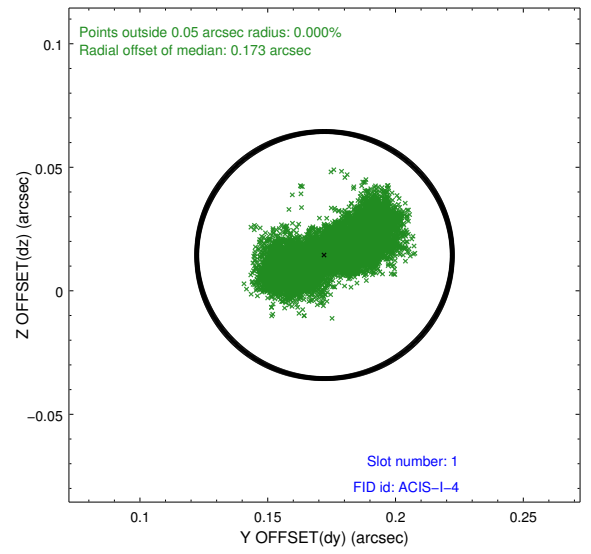
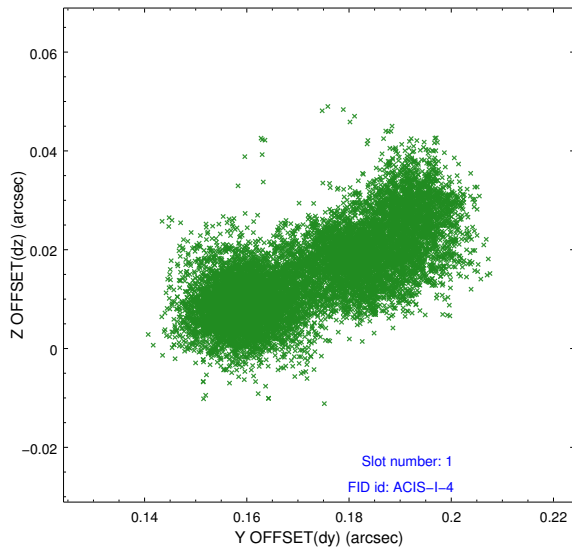


## 2.5 FID Slots

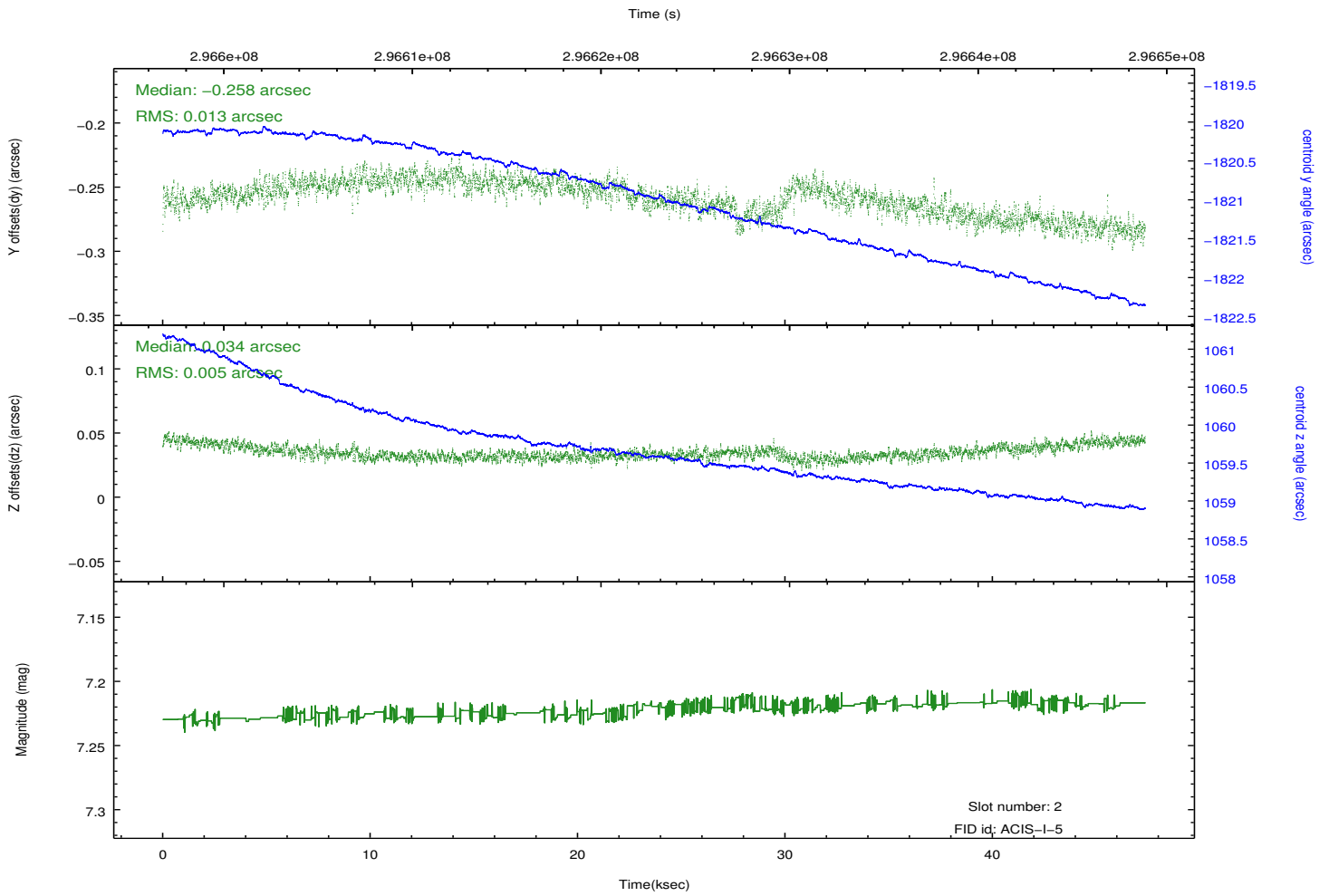
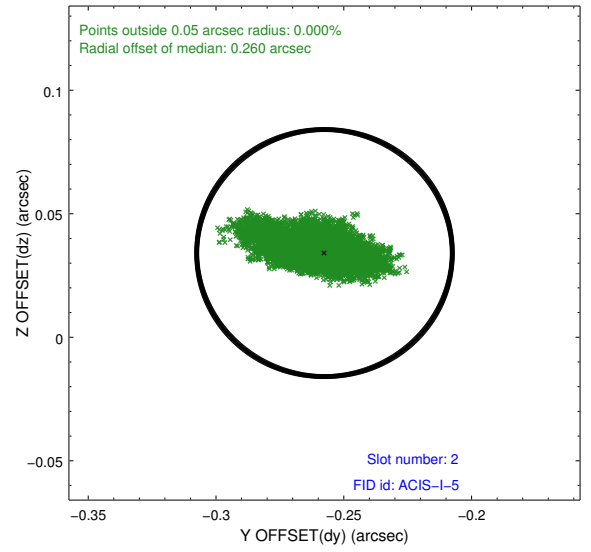
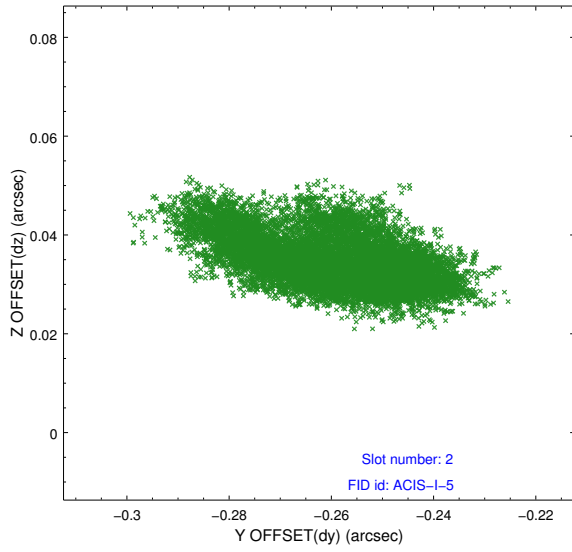
### 2.5.1 Slot 0



## 2.5.2 Slot 1



### 2.5.3 Slot 2



# A Summary

## A.1 Status

V&V Scientist	Joy Nichols
V&V Date (YYYY-MM-DD)	2012.04.26
V&V Edition	1
V&V Disposition and Status	OK
V&V Charge Time	47.2607178

## A.2 Comments