

# V&V Reference Report

## L2 ASCDS Version : 8.4.4

Observation 8010 - L2 Version 3  
Chandra X-Ray Center

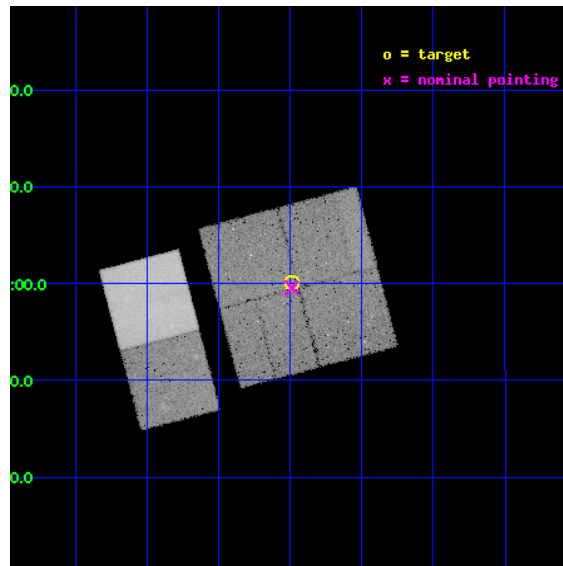
L2 Processing Date : Apr 23 2012

## Contents

<b>1</b>	<b>Front</b>	<b>2</b>
<b>2</b>	<b>OBI</b>	<b>3</b>
2.1	OBI . . . . .	3
2.1.1	Images . . . . .	3
2.1.2	Bias . . . . .	3
2.1.3	Parameters . . . . .	4
2.1.4	Events . . . . .	4
2.2	Compared Parameters . . . . .	5
2.3	Aspect . . . . .	6
2.4	Star Slots . . . . .	9
2.4.1	Slot 3 . . . . .	9
2.4.2	Slot 4 . . . . .	10
2.4.3	Slot 5 . . . . .	11
2.4.4	Slot 6 . . . . .	12
2.4.5	Slot 7 . . . . .	13
2.5	FID Slots . . . . .	14
2.5.1	Slot 0 . . . . .	14
2.5.2	Slot 1 . . . . .	15
2.5.3	Slot 2 . . . . .	16
<b>A</b>	<b>Summary</b>	<b>17</b>
A.1	Status . . . . .	17
A.2	Comments . . . . .	17

# 1 Front

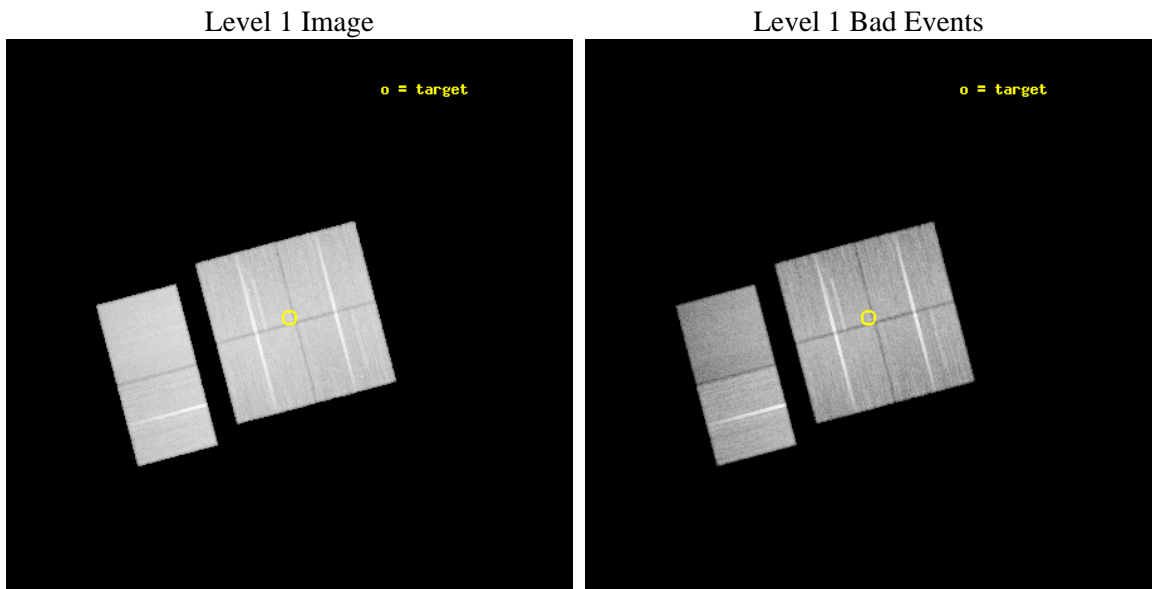
seq_num	900554	Sequence number
obs_id	8010	Observation id
title	THE CHANDRA-COSMOS SURVEY	Proposal title
observer	Dr. Martin Elvis	Principal investigator
object	C-COSMOS4-1	Source name
dtcycle	0	&#160
cycle	P	events from which exps? Prim/Second/Both
ra_targ	150.371642	Observer's specified target RA [deg]
dec_targ	2.000914	Observer's specified target Dec [deg]
ra_nom	150.37198612693	Nominal RA [deg]
dec_nom	1.9928240793266	Nominal Dec [deg]
roll_nom	255.20868595288	Nominal Roll [deg]
revision	3	Processing version of data
ontime	34031.193420053	Sum of GTIs [s]
livetime	33600.269957843	Livetime [s]
ontime0	34018.106338918	Sum of GTIs [s]
ontime1	34034.352220774	Sum of GTIs [s]
ontime2	34037.634251177	Sum of GTIs [s]
ontime3	34031.193420053	Sum of GTIs [s]
ontime6	34040.998381376	Sum of GTIs [s]
ontime7	34040.957341373	Sum of GTIs [s]
l2events	241750	Number of level 2 events



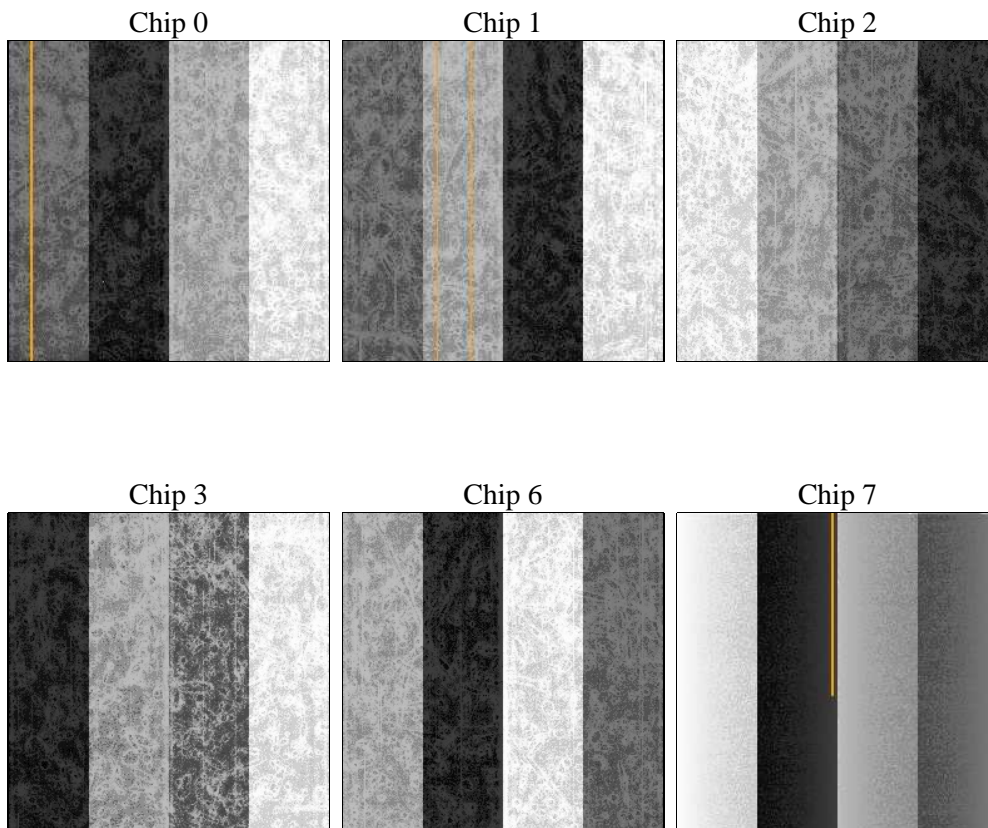
## 2 OBI

### 2.1 OBI

#### 2.1.1 Images



#### 2.1.2 Bias



### 2.1.3 Parameters

obi_num	0	Obi number	sched_exp_time	34000.000000	[s] Scheduled observation exposure time
ascdsver	8.4.4	Processing system revision	ontime	34031.193420053	Sum of GTIs [s]
caldbver	4.4.9	&#160	ontime0	34018.106338918	Sum of GTIs [s]
date	2012-04-23T22:12:28	Date and time of file creation	ontime1	34034.352220774	Sum of GTIs [s]
revision	3	Processing version of data	ontime2	34037.634251177	Sum of GTIs [s]
			ontime3	34031.193420053	Sum of GTIs [s]
			ontime6	34040.998381376	Sum of GTIs [s]
			ontime7	34040.957341373	Sum of GTIs [s]
			l1events	1614601	Number of level 1 events

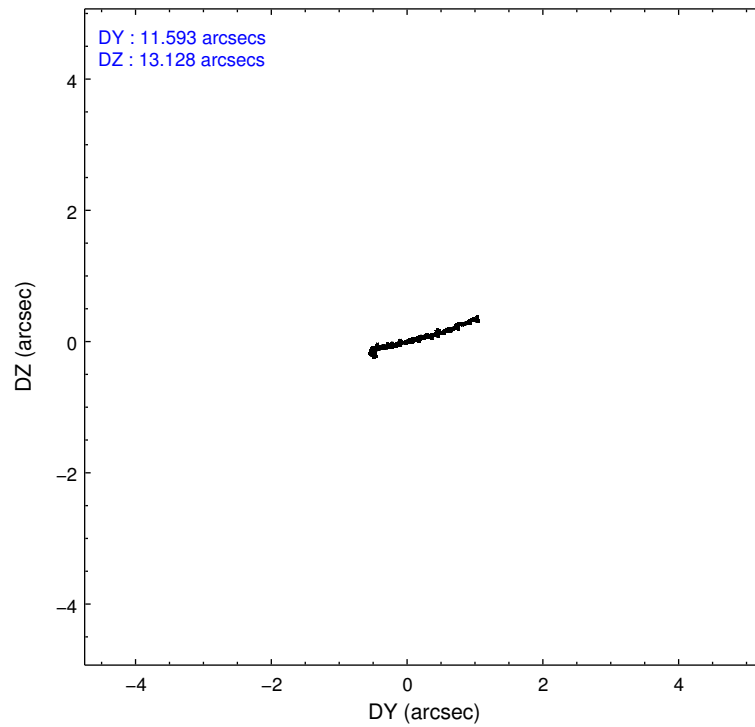
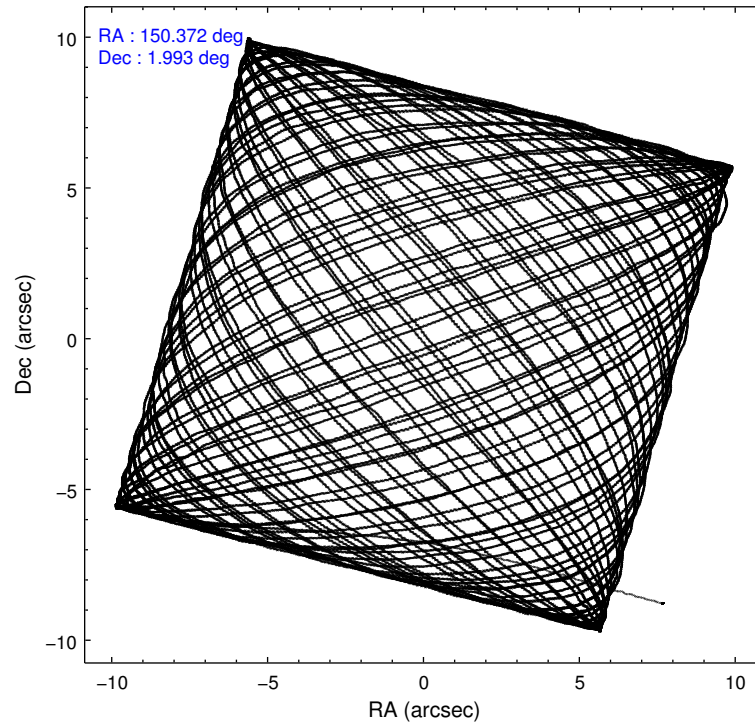
### 2.1.4 Events

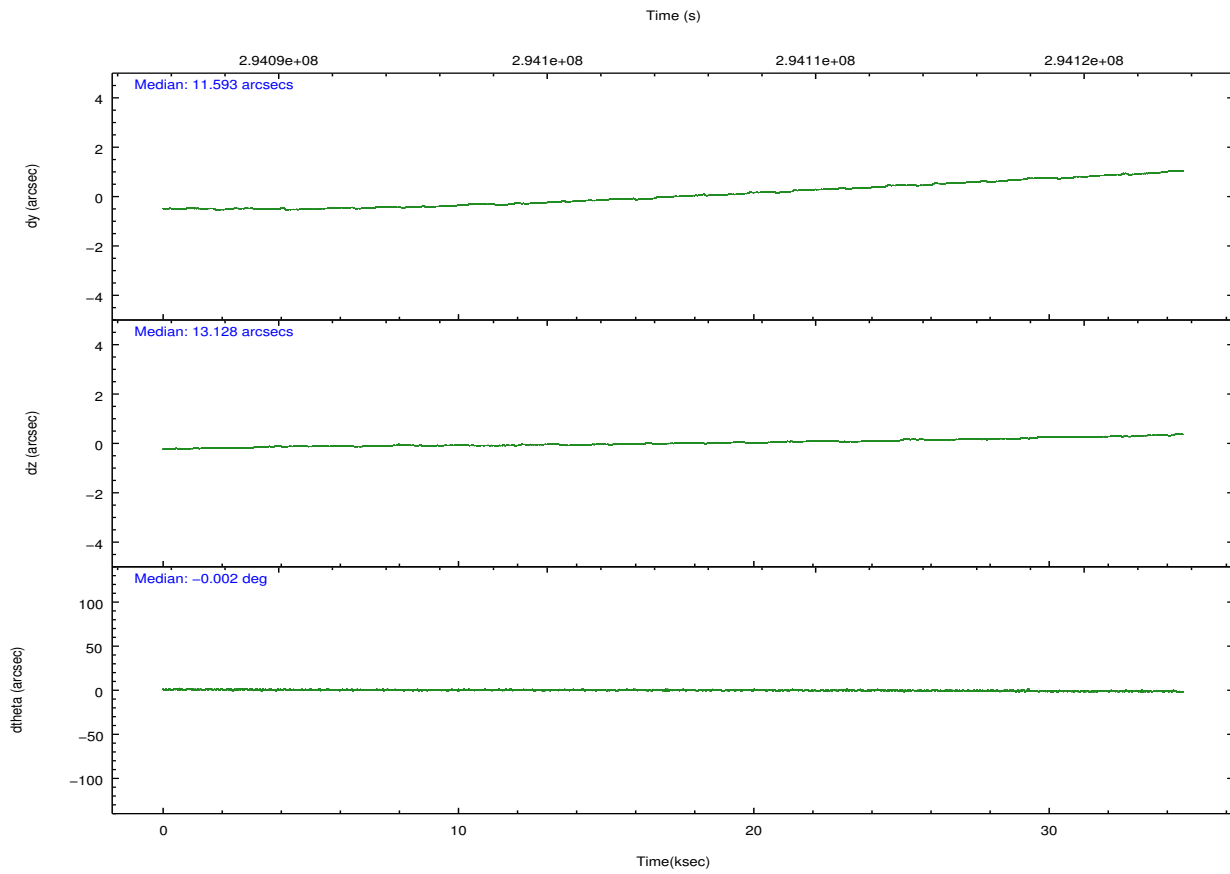
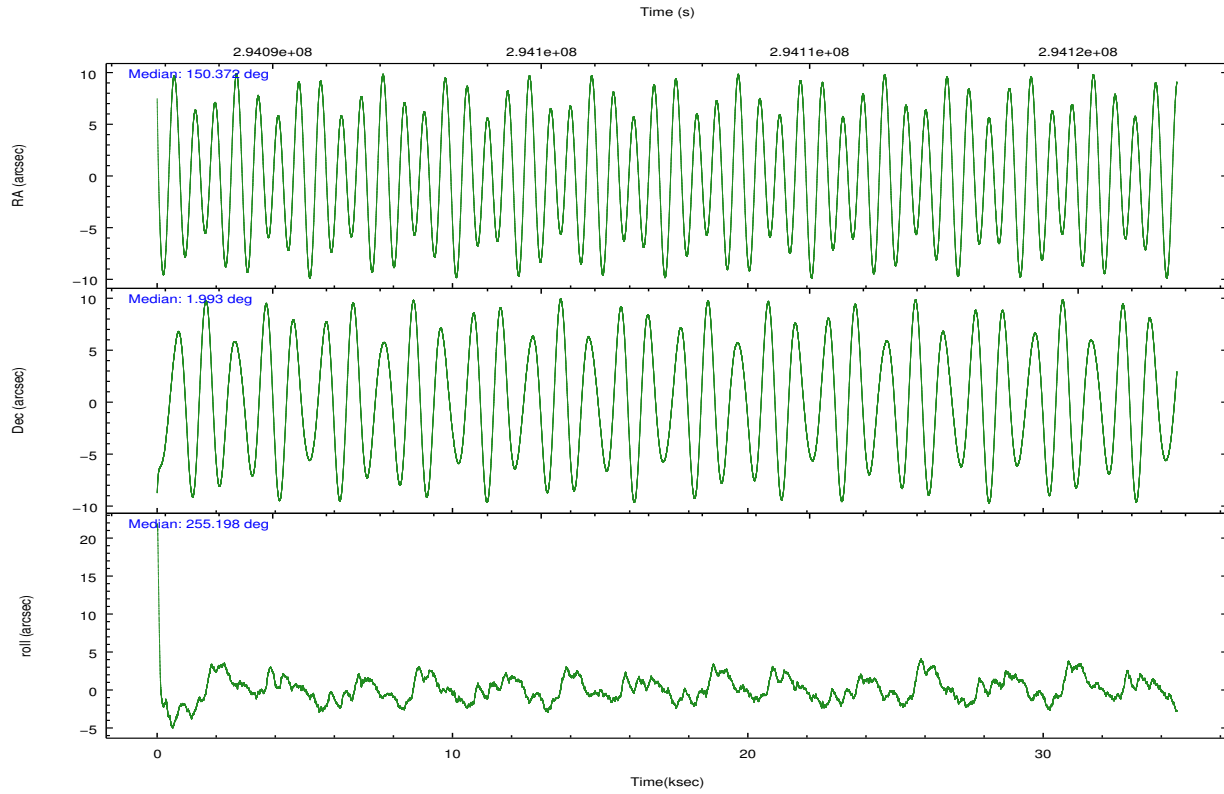
	ccd 0	ccd 1	ccd 2	ccd 3	ccd 6	ccd 7		ccd 0	ccd 1	ccd 2	ccd 3	ccd 6	ccd 7
level 1 events	252218	251854	274006	260550	281456	294517	grade 0 events	9123	10567	9256	9284	9705	12423
rejected events	226648	222749	248586	235534	253734	159679		3%	4%	3%	3%	3%	4%
rejected %	89%	88%	90%	90%	90%	54%	grade 1 events	131	109	136	139	122	342
								0%	0%	0%	0%	0%	0%
							grade 2 events	6020	6484	5739	5248	6150	27100
								2%	2%	2%	2%	2%	9%
							grade 3 events	2813	3121	2889	2755	2941	12429
								1%	1%	1%	1%	1%	4%
							grade 4 events	2667	3014	2866	2834	3012	12098
								1%	1%	1%	1%	1%	4%
							grade 5 events	8927	9822	8677	10340	10676	30962
								3%	3%	3%	3%	3%	10%
							grade 6 events	4948	5923	4675	4903	5915	70818
								1%	2%	1%	1%	2%	24%
							grade 7 events	217589	212814	239768	225047	242935	128345
								86%	84%	87%	86%	86%	43%

## 2.2 Compared Parameters

Parameter	Planned	Actual	Parameter	Planned	Actual
Instrument	ACIS	ACIS	Obspar format version number	7	7
Detector	ACIS-012367	ACIS-012367	Obspar file type	PREDICTED	ACTUAL
Grating	NONE	NONE	Obspar update status	NONE	UPDATED
Data mode	VFAINT	VFAINT	CCD I0 on	Y	Y
Observation mode	POINTING	POINTING	CCD I1 on	Y	Y
[deg] Pointing RA	150.364672	150.3719861269293	CCD I2 on	Y	Y
[deg] Pointing Dec	2.019340	1.992824079326612	CCD I3 on	Y	Y
[deg] Pointing Roll	255.000241	255.2086859528805	CCD S0 on	N	N
[mm] SIM focus pos	-0.782348	-0.7809083437167272	CCD S1 on	N	N
[mm] SIM defocus	0	0.001439871863259334	CCD S2 on	O1	Y
[mm] SIM translation stage pos	-233.592463	-233.5874344608287	CCD S3 on	O2	Y
[mm] SIM translation stage offset	0	-0.005018542100998502	CCD S4 on	N	N
[s] Observation start time (MET)	294087952.184000	294086772.25968	CCD S5 on	N	N
Observation start date	2007-04-27T19:04:47	2007-04-27T18:46:12	Number of optional ACIS chips dropped	0	0
[s] Observation end time (MET)	294121952.184000	294122624.19889	On-chip summing requested	N	N
Observation end date	2007-04-28T04:31:27	2007-04-28T04:43:44	Subarray requested	NONE	NONE
Read mode	TIMED	TIMED	Alternating exposures requested	N	N
			[s] Primary exposure time	0.000000	3.2

## 2.3 Aspect



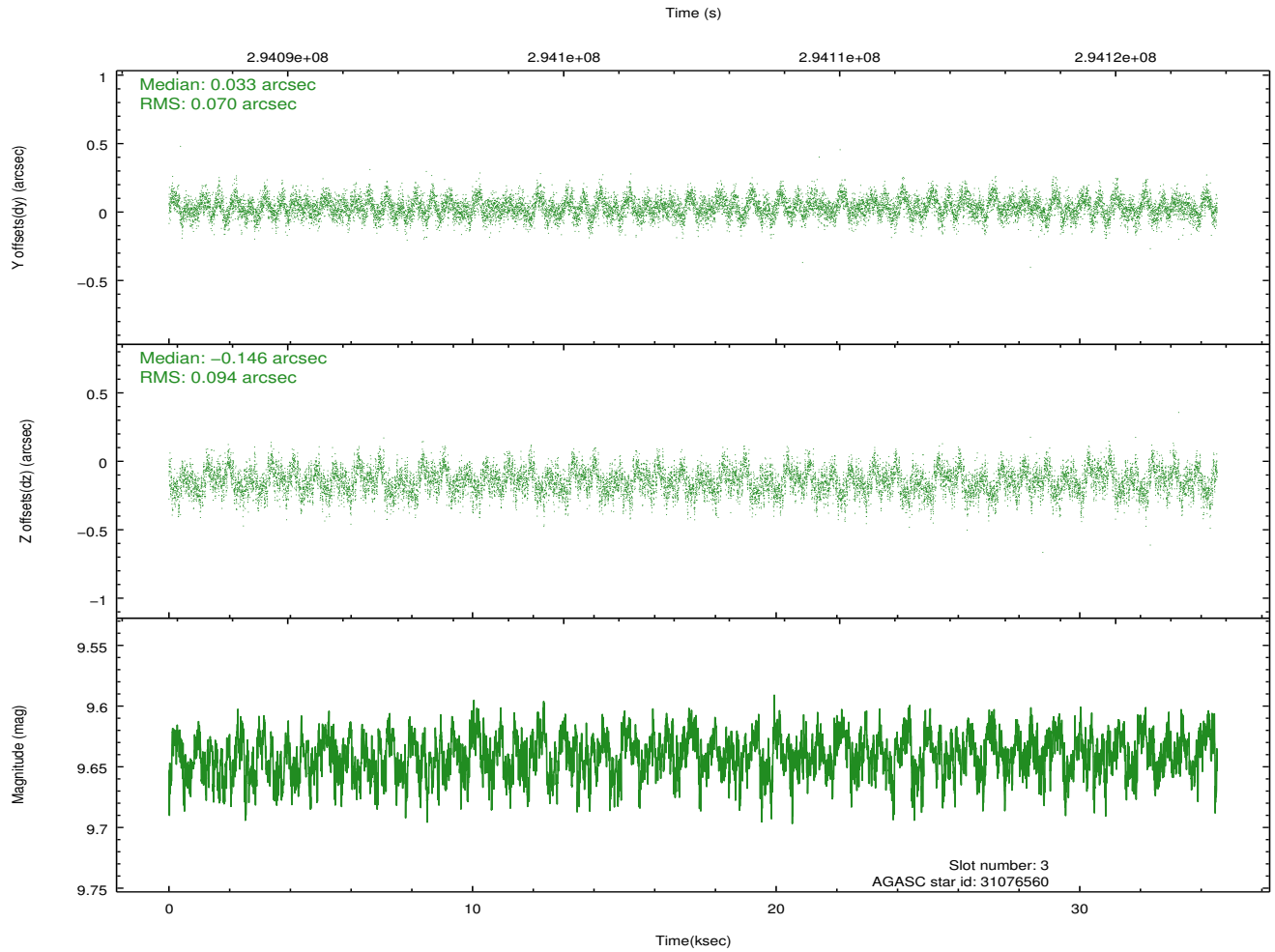
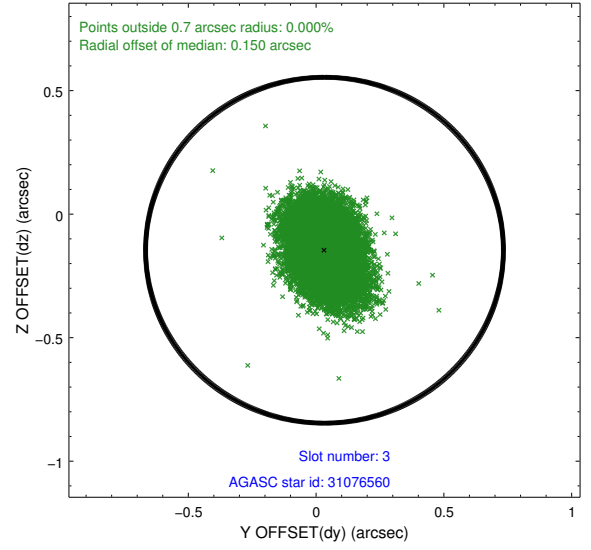
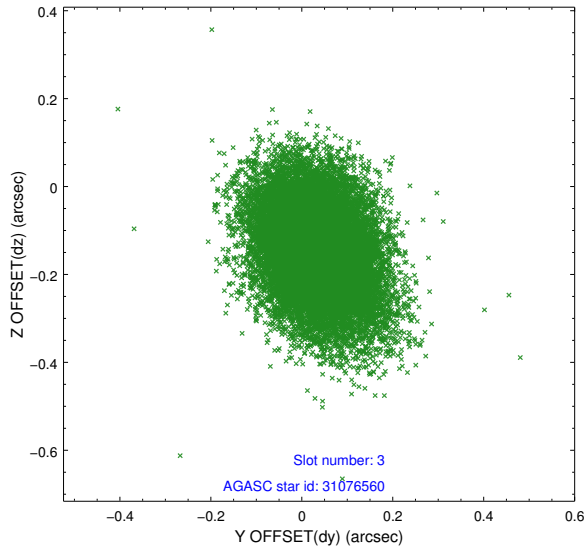


### Slot Statistics

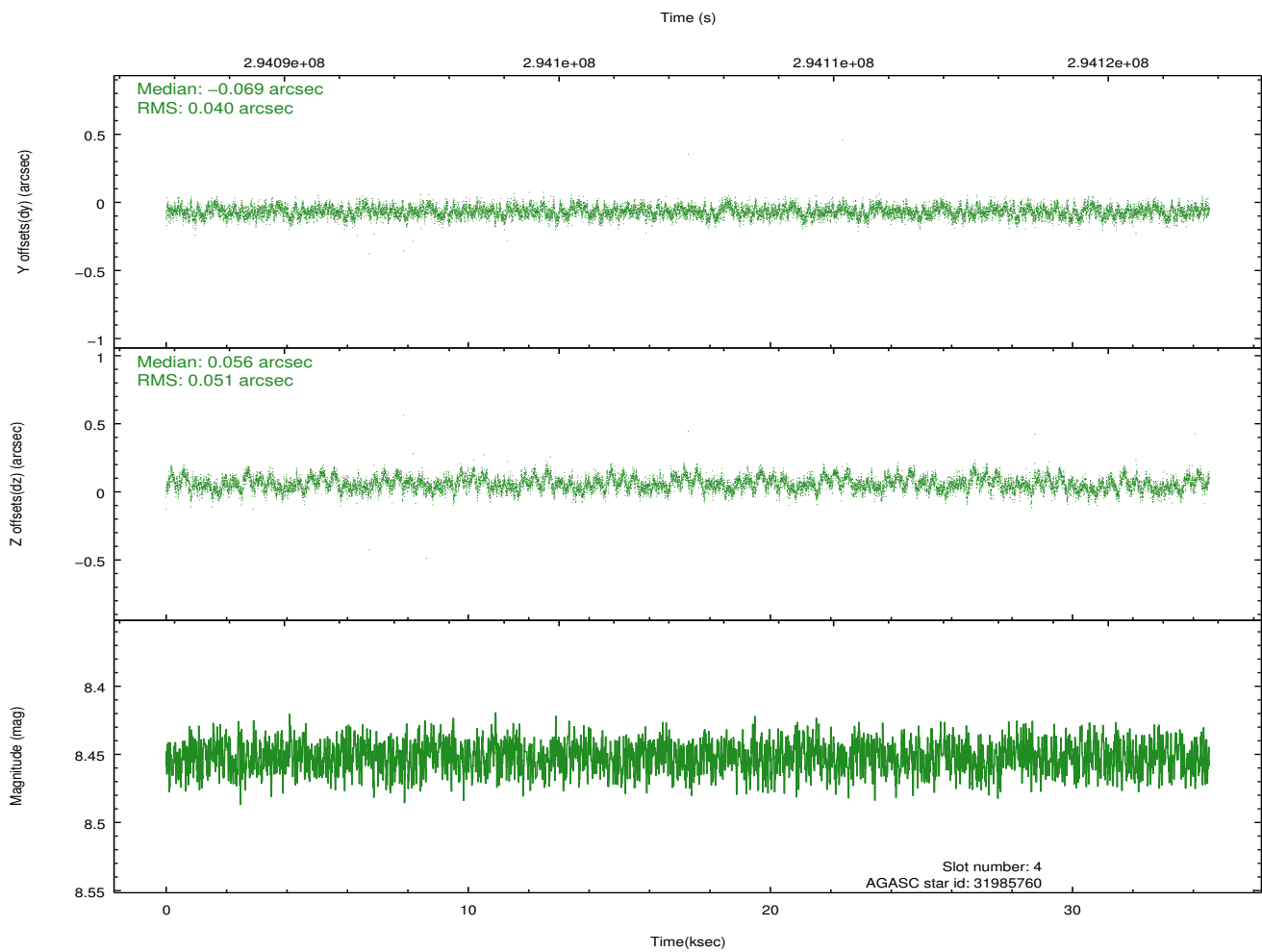
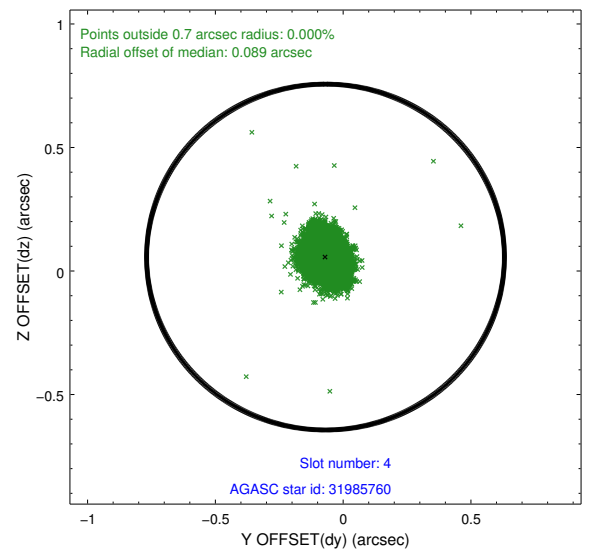
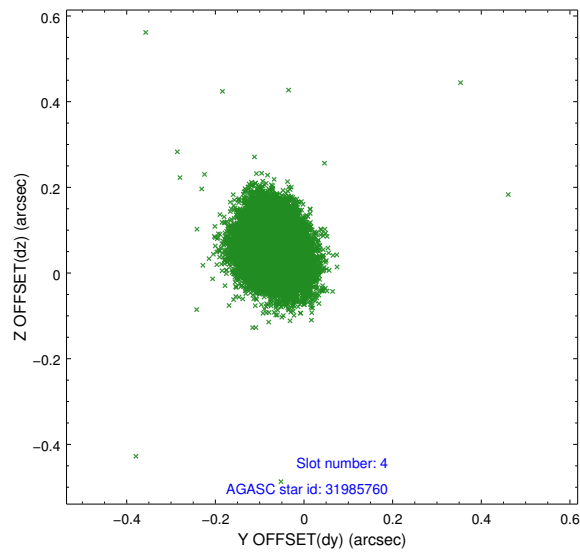
slot	status	id	mag	n_pts	med_dy	med_dz	dr1	dr2	ra	dec	mean_y	mean_z
0	FID	ACIS-I-1	7.23	8421	0.045	-0.002	0.009	0.019	0.000000	0.000000	927.93	-836.71
1	FID	ACIS-I-5	7.23	8422	-0.206	0.054	0.008	0.014	0.000000	0.000000	-1820.40	1060.82
2	FID	ACIS-I-6	7.24	8421	0.070	0.018	0.008	0.014	0.000000	0.000000	393.46	1705.33
3	GUIDE	31076560	9.64	16820	0.033	-0.146	0.123	0.206	149.884782	2.009277	482.37	-1657.90
4	GUIDE	31985760	8.45	16841	-0.069	0.056	0.069	0.109	150.924581	2.094394	-782.69	1875.76
5	GUIDE	31986152	9.01	16836	0.106	0.146	0.100	0.164	150.840314	2.057585	-576.06	1617.42
6	GUIDE	32374896	9.23	16828	-0.083	-0.111	0.106	0.169	150.682269	2.512794	-2011.59	643.63
7	GUIDE	32375384	9.98	16829	0.019	0.043	0.152	0.240	150.238117	2.622063	-1977.87	-1001.47

## 2.4 Star Slots

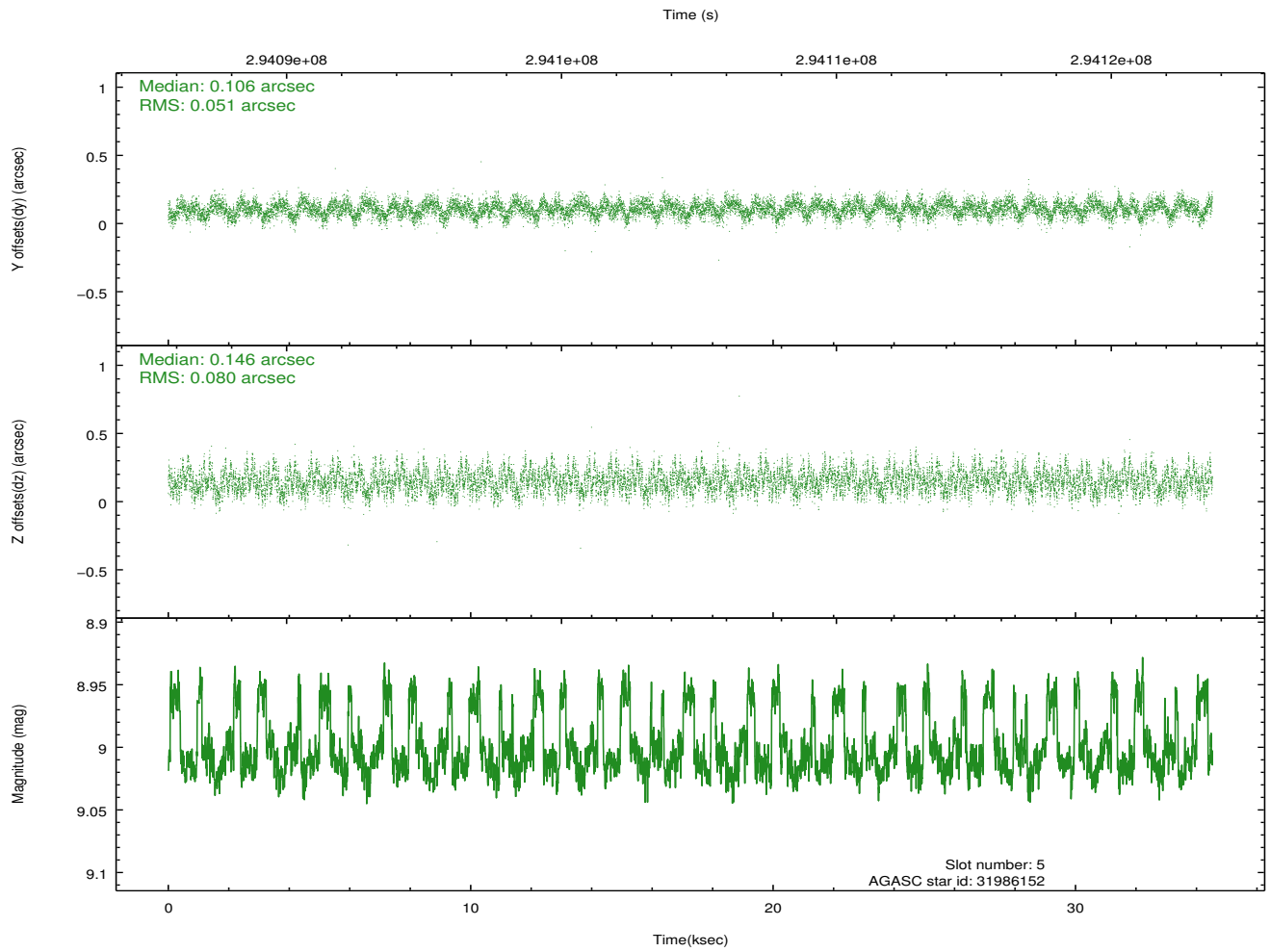
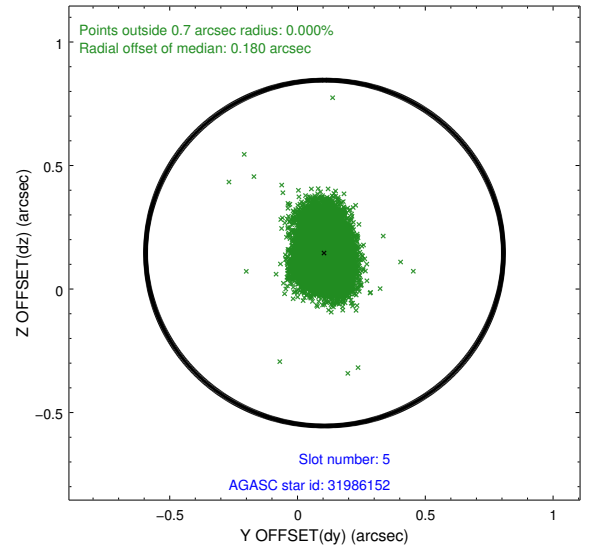
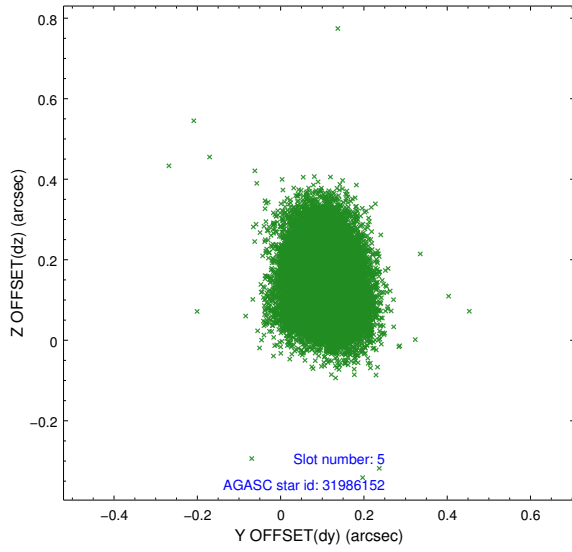
### 2.4.1 Slot 3



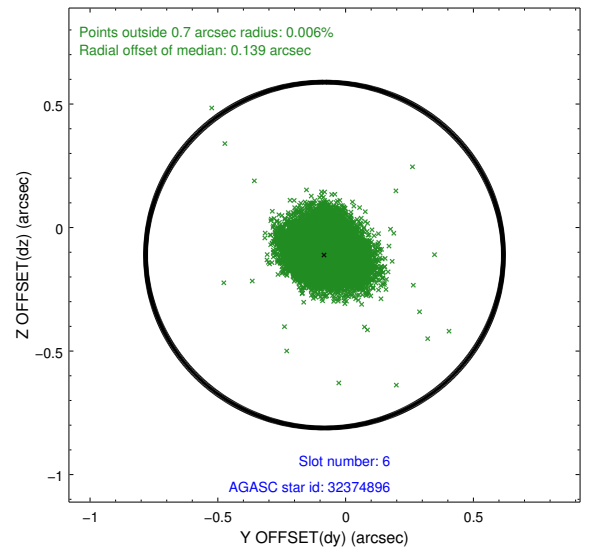
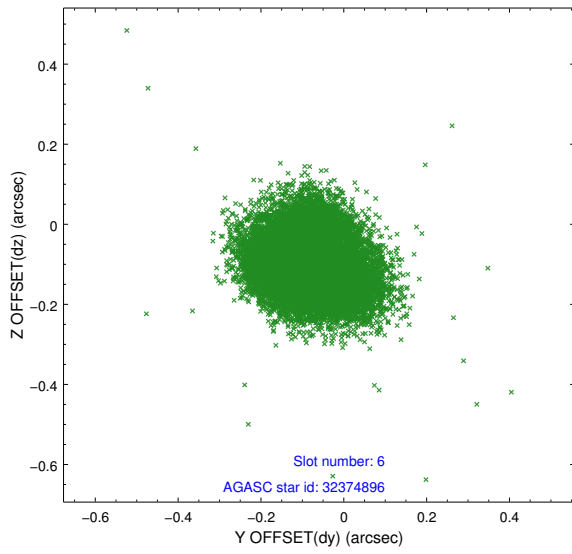
## 2.4.2 Slot 4



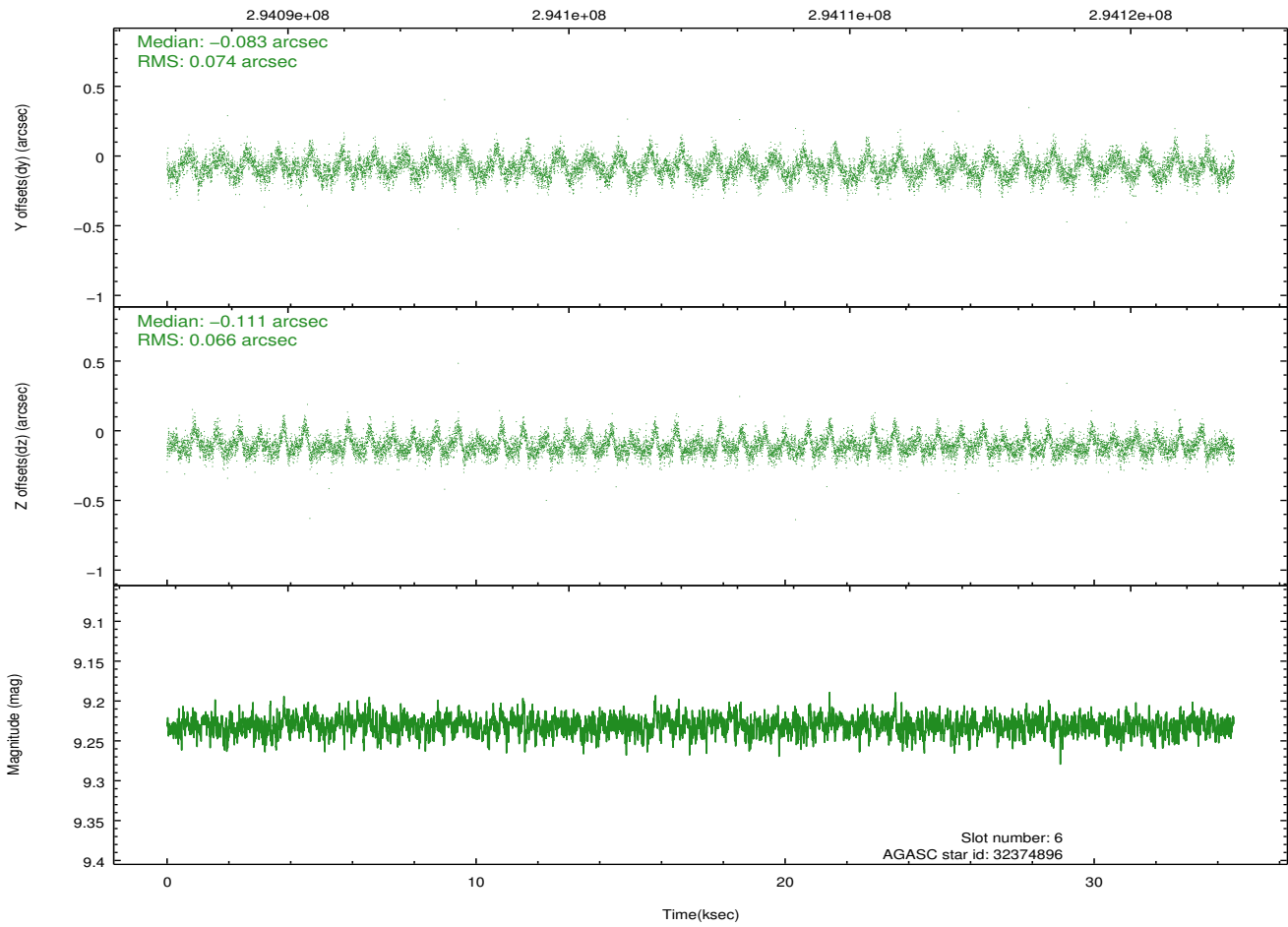
### 2.4.3 Slot 5



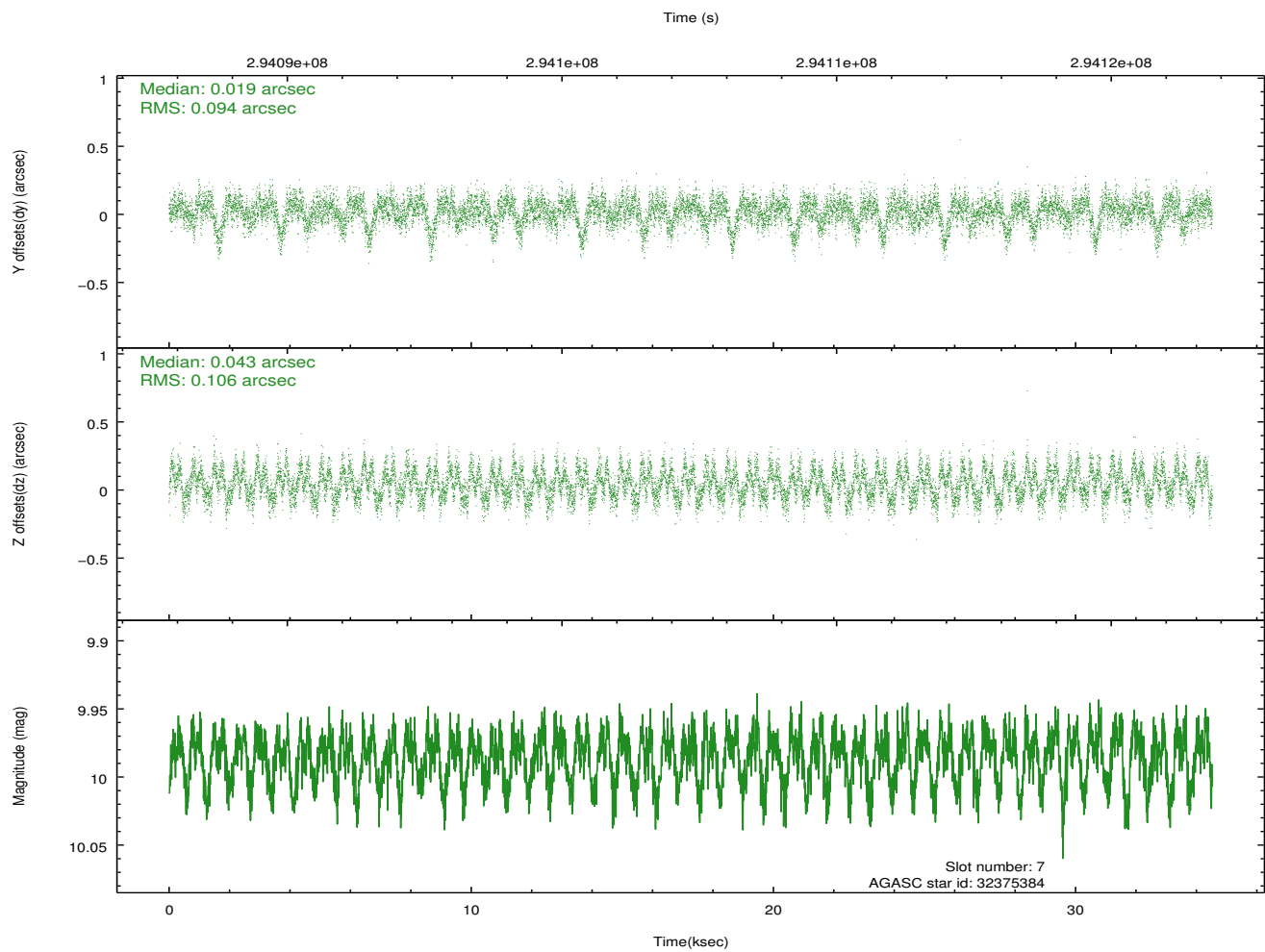
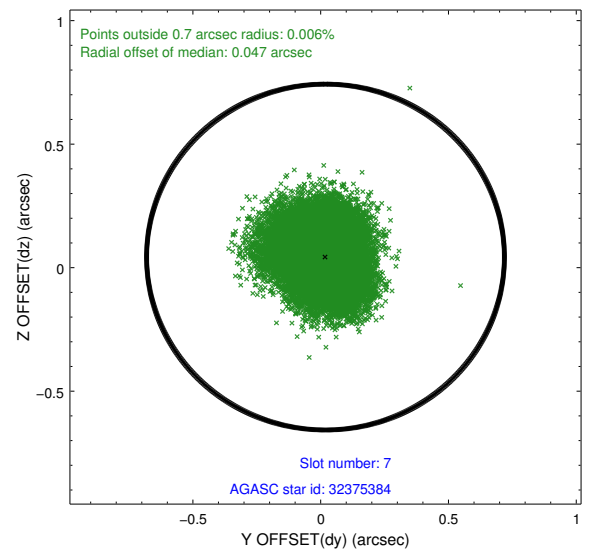
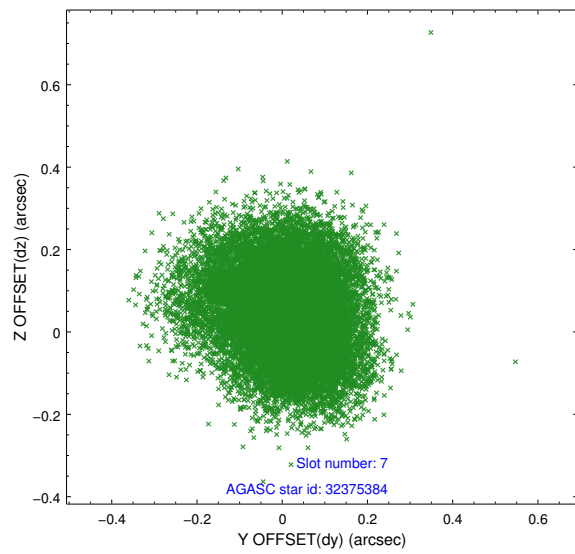
### 2.4.4 Slot 6



Time (s)

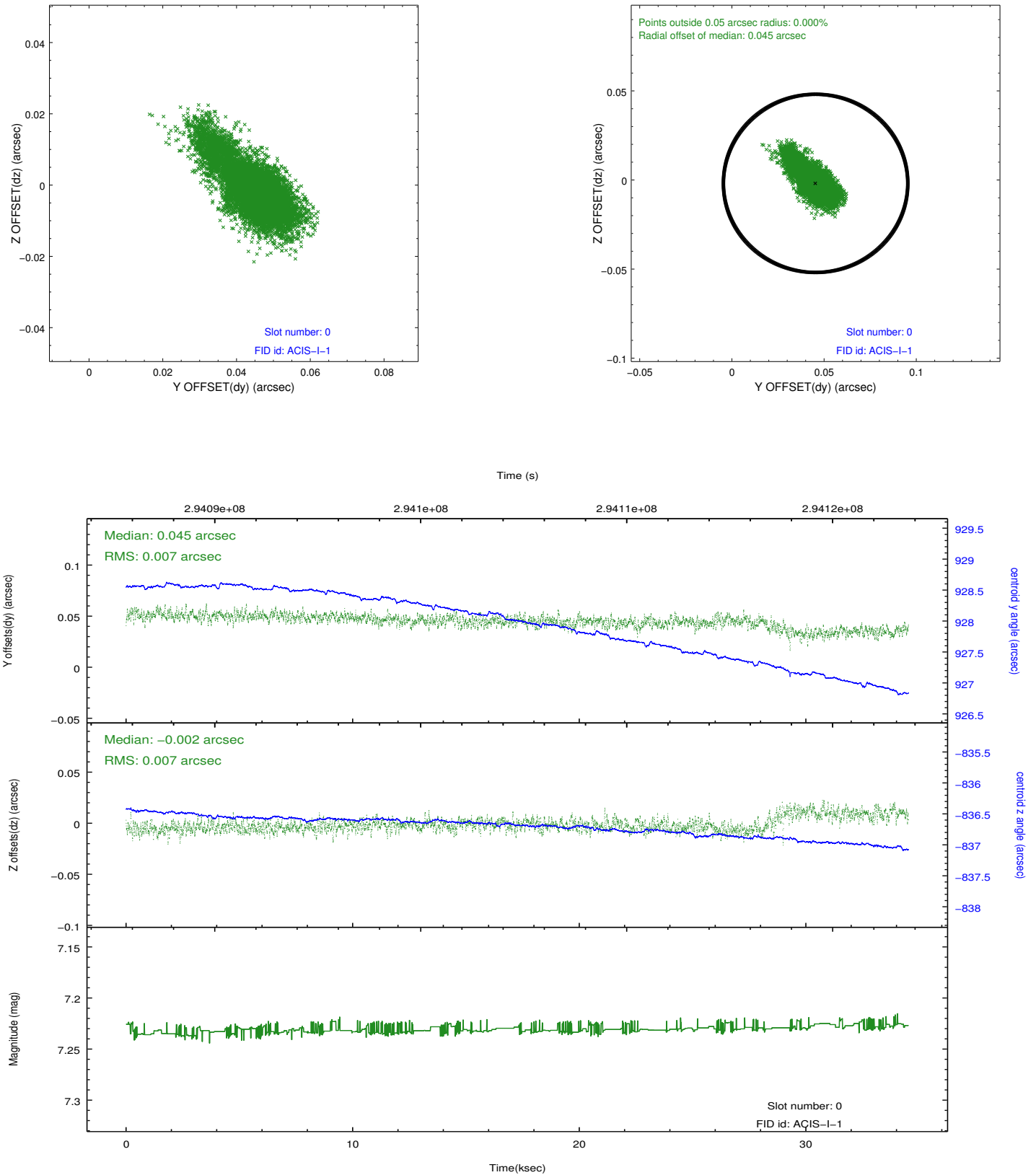


## 2.4.5 Slot 7

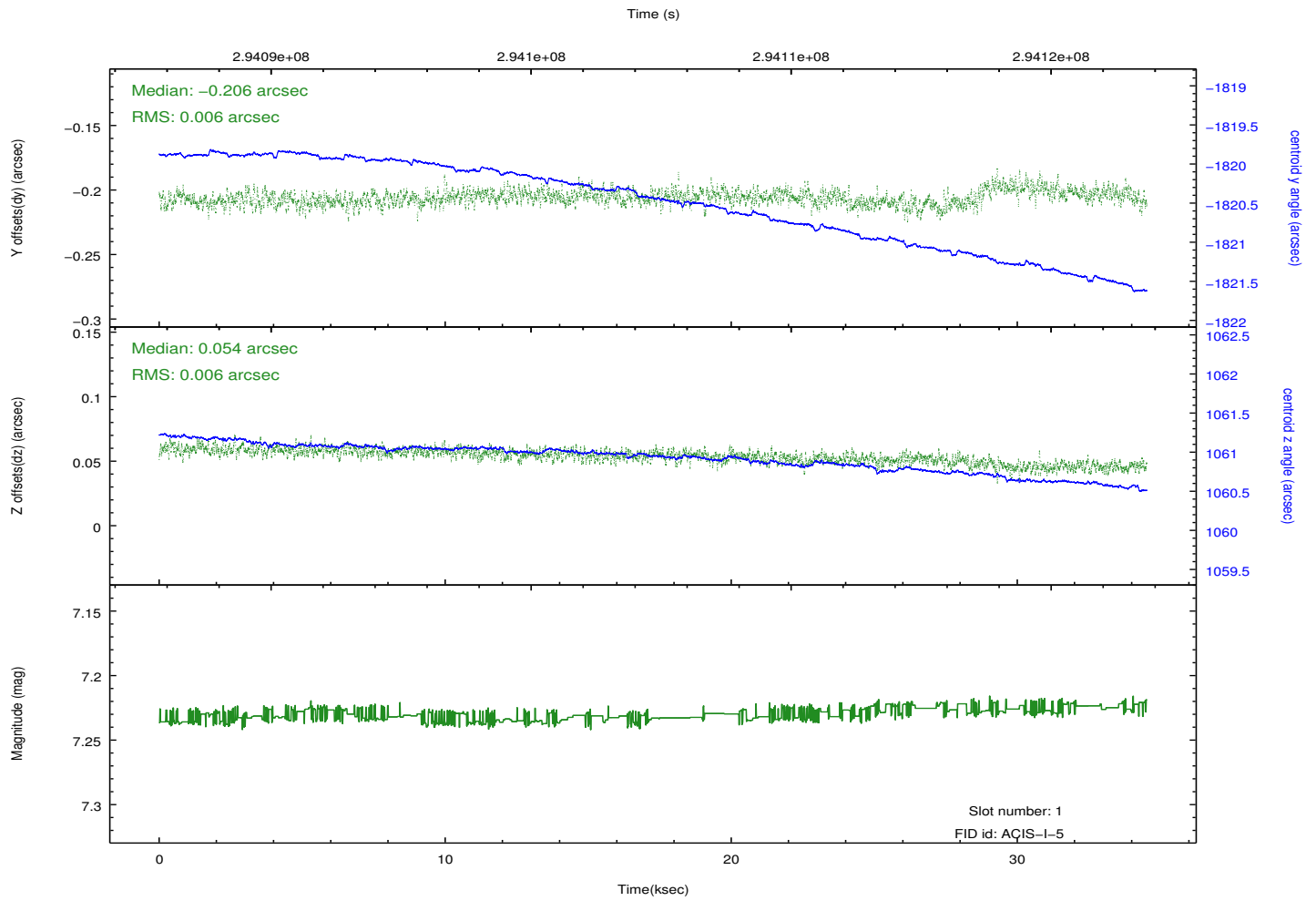
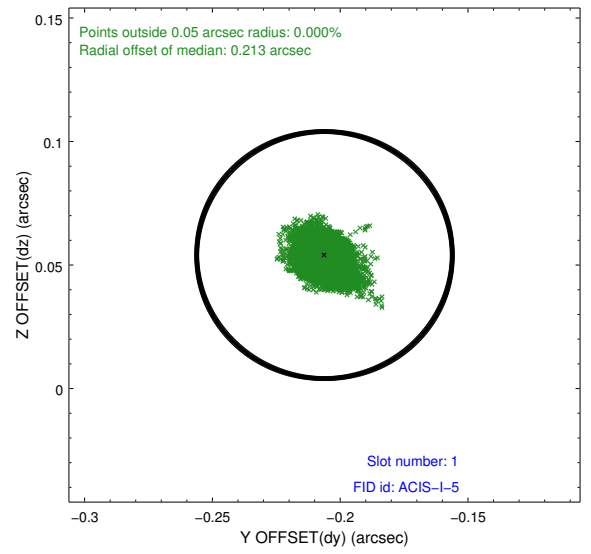
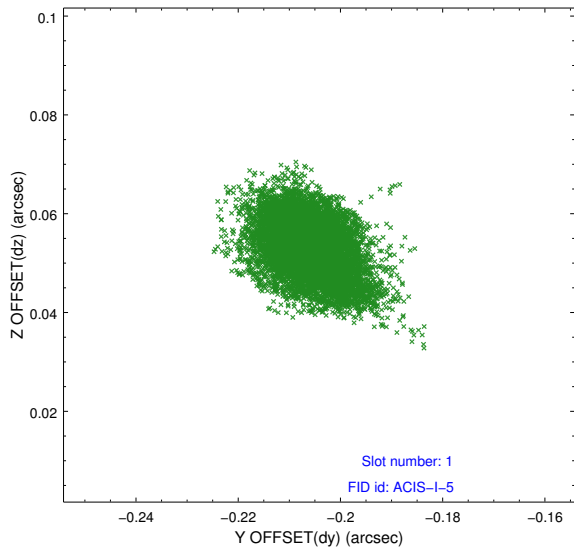


## 2.5 FID Slots

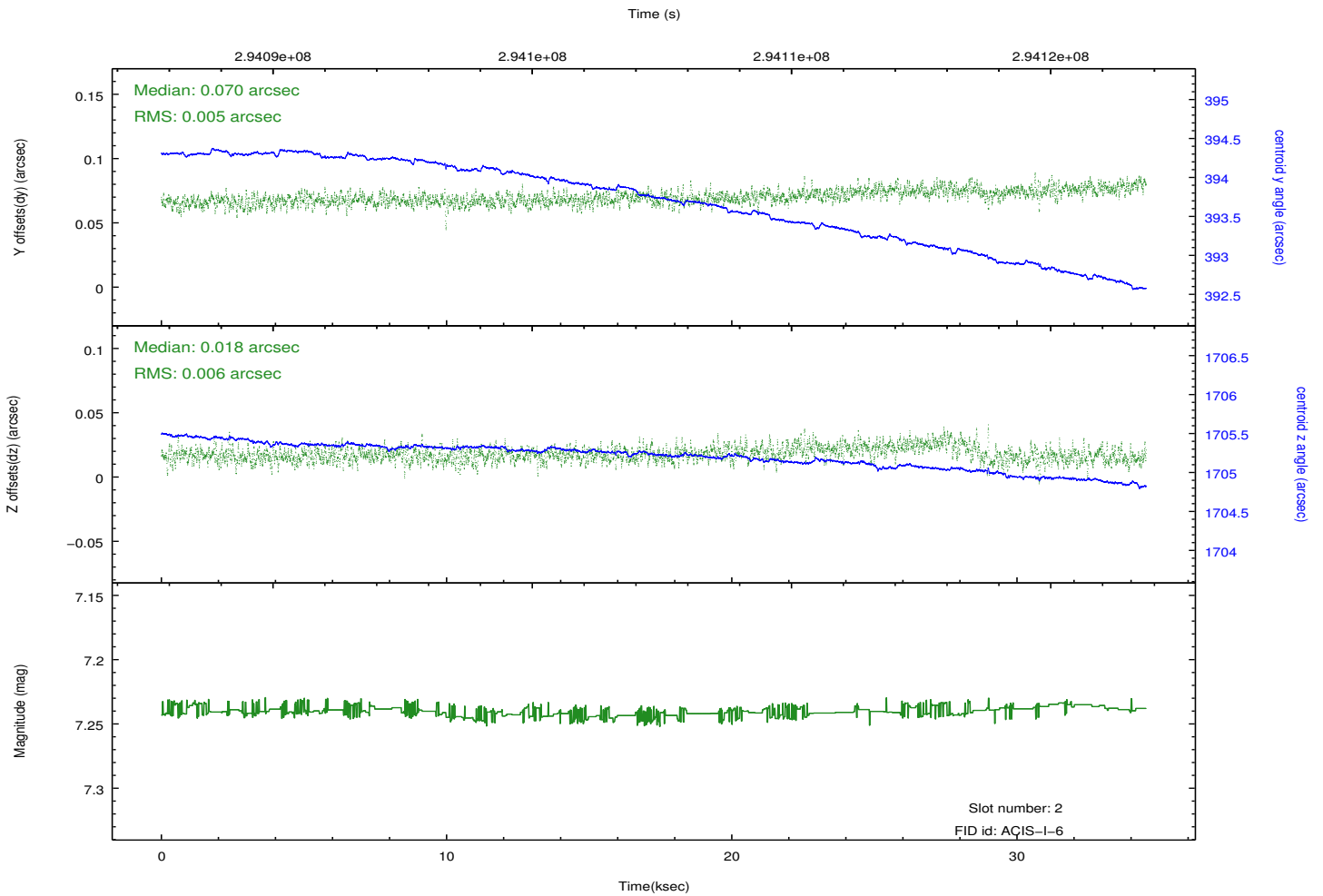
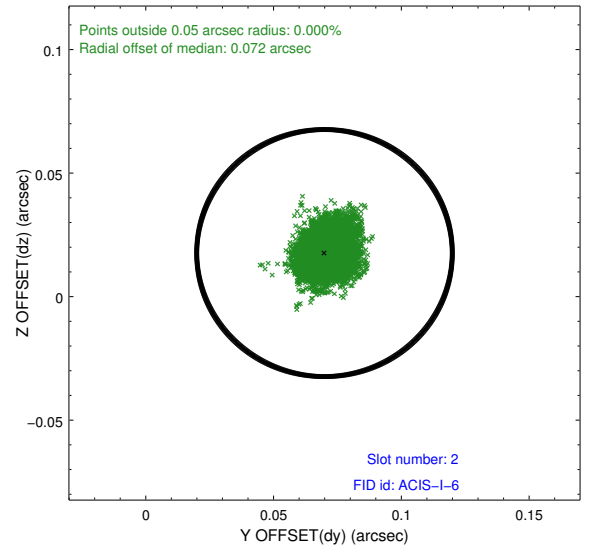
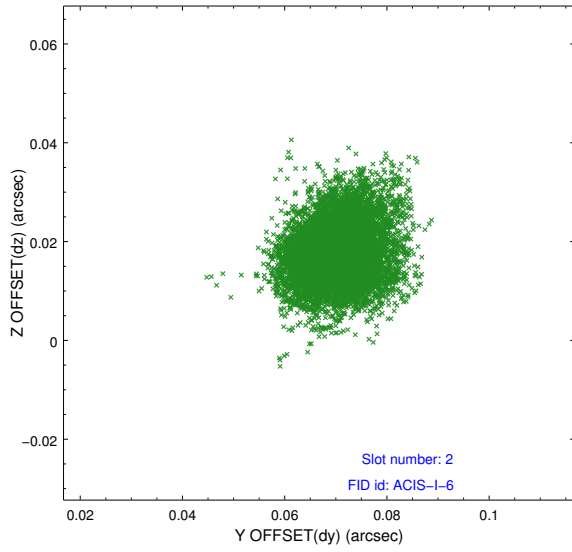
### 2.5.1 Slot 0



## 2.5.2 Slot 1



### 2.5.3 Slot 2



# A Summary

## A.1 Status

V&V Scientist	Beth Sundheim
V&V Date (YYYY-MM-DD)	2012.04.24
V&V Edition	1
V&V Disposition and Status	OK
V&V Charge Time	34.0318769

## A.2 Comments