

# V&V Reference Report

## L2 ASCDS Version : 8.4.5

Observation 830 - L2 Version 4  
Chandra X-Ray Center

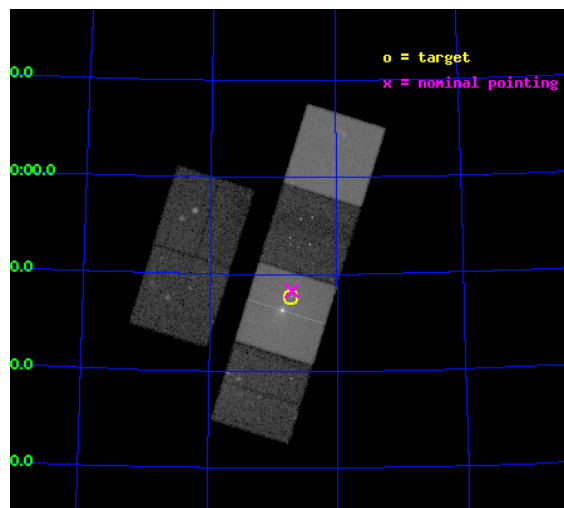
L2 Processing Date : Aug 25 2012

## Contents

<b>1</b>	<b>Front</b>	<b>2</b>
<b>2</b>	<b>OBI</b>	<b>3</b>
2.1	OBI . . . . .	3
2.1.1	Images . . . . .	3
2.1.2	Bias . . . . .	3
2.1.3	Parameters . . . . .	4
2.1.4	Events . . . . .	4
2.2	Compared Parameters . . . . .	5
2.3	Aspect . . . . .	6
2.4	Star Slots . . . . .	9
2.4.1	Slot 3 . . . . .	9
2.4.2	Slot 4 . . . . .	10
2.4.3	Slot 5 . . . . .	11
2.4.4	Slot 6 . . . . .	12
2.4.5	Slot 7 . . . . .	13
2.5	FID Slots . . . . .	14
2.5.1	Slot 0 . . . . .	14
2.5.2	Slot 1 . . . . .	15
2.5.3	Slot 2 . . . . .	16
<b>A</b>	<b>Summary</b>	<b>17</b>
A.1	Status . . . . .	17
A.2	Comments . . . . .	17

# 1 Front

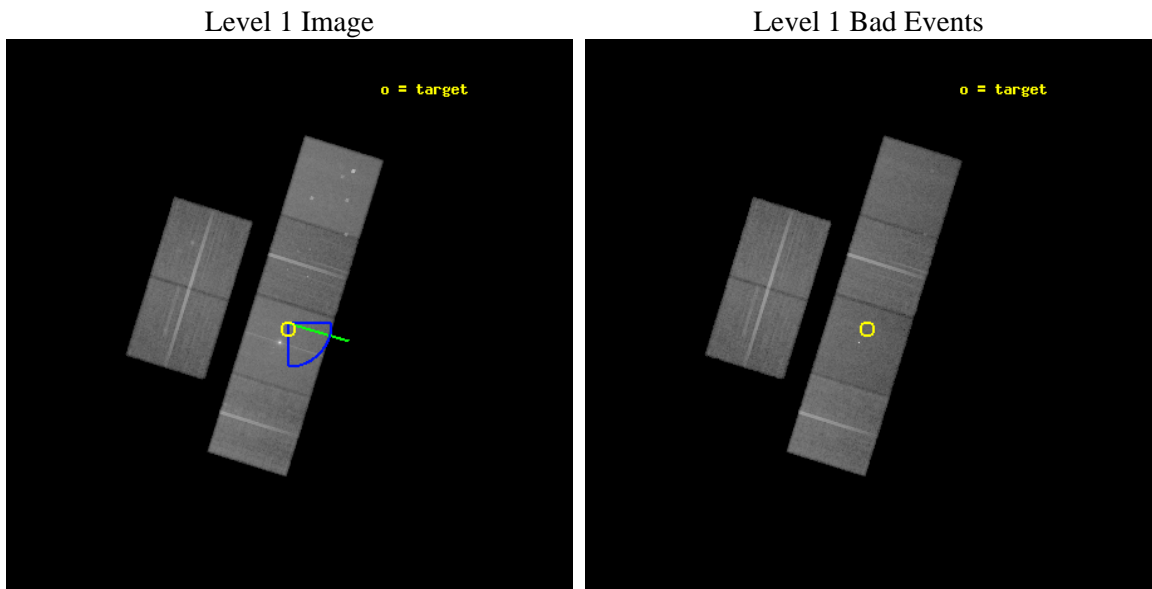
seq_num	700135	Sequence number
obs_id	830	Observation id
title	AN X-RAY SIGNATURE OF THE RADIO JET OF 3C 390.3	Proposal title
observer	PROF. STEFAN WAGNER	Principal investigator
object	JET OF 3C 390.3	Source name
dtcycle	0	&#160
cycle	P	events from which exps? Prim/Second/Both
ra_targ	280.45	Observer's specified target RA [deg]
dec_targ	79.795278	Observer's specified target Dec [deg]
ra_nom	280.44344704478	Nominal RA [deg]
dec_nom	79.805239003112	Nominal Dec [deg]
roll_nom	107.28236966116	Nominal Roll [deg]
revision	4	Processing version of data
ontime	34409.022709966	Sum of GTIs [s]
livetime	33973.314945786	Livetime [s]
ontime2	34409.063720062	Sum of GTIs [s]
ontime3	34408.899560064	Sum of GTIs [s]
ontime5	34408.981669962	Sum of GTIs [s]
ontime6	34408.940600067	Sum of GTIs [s]
ontime7	34409.022709966	Sum of GTIs [s]
ontime8	34405.617450118	Sum of GTIs [s]
l2events	427432	Number of level 2 events



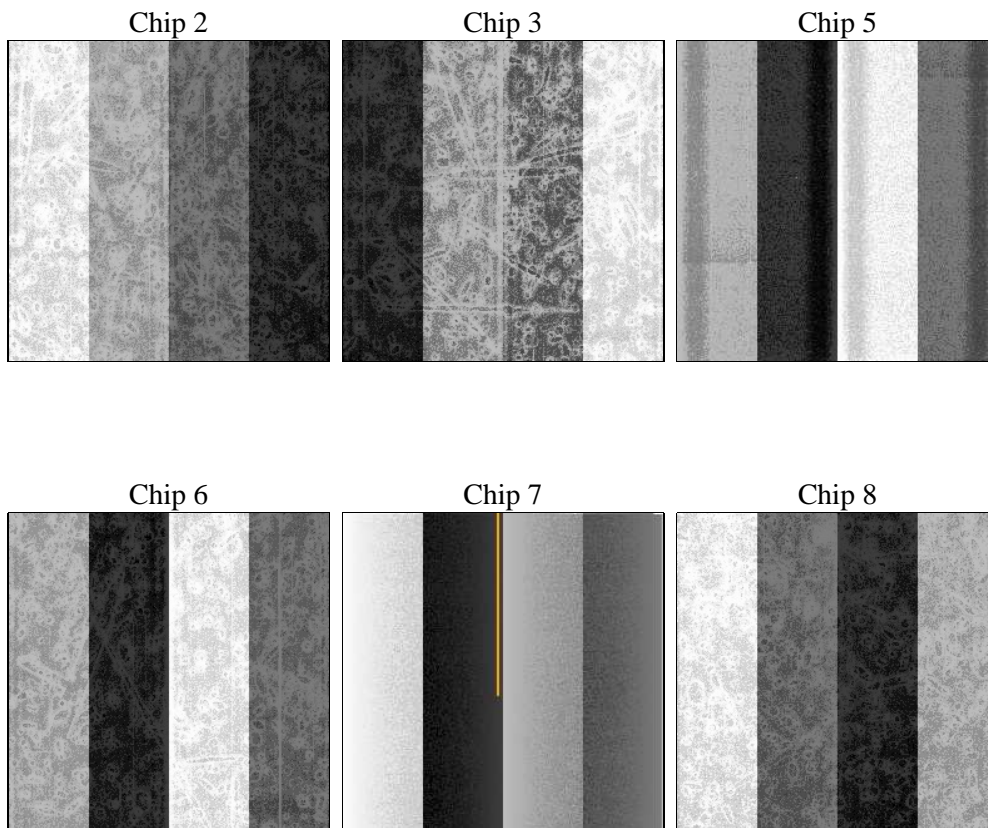
## 2 OBI

### 2.1 OBI

#### 2.1.1 Images



#### 2.1.2 Bias



### 2.1.3 Parameters

obi_num	0	Obi number	sched_exp_time	34674.902000	[s] Scheduled observation exposure time
ascdsver	8.4.5	Processing system revision	ontime	34409.022709966	Sum of GTIs [s]
caldbver	4.5.1.1	&#160	ontime2	34409.063720062	Sum of GTIs [s]
date	2012-08-25T20:50:03	Date and time of file creation	ontime3	34408.899560064	Sum of GTIs [s]
revision	4	Processing version of data	ontime5	34408.981669962	Sum of GTIs [s]
			ontime6	34408.940600067	Sum of GTIs [s]
			ontime7	34409.022709966	Sum of GTIs [s]
			ontime8	34405.617450118	Sum of GTIs [s]
			l1events	1761281	Number of level 1 events

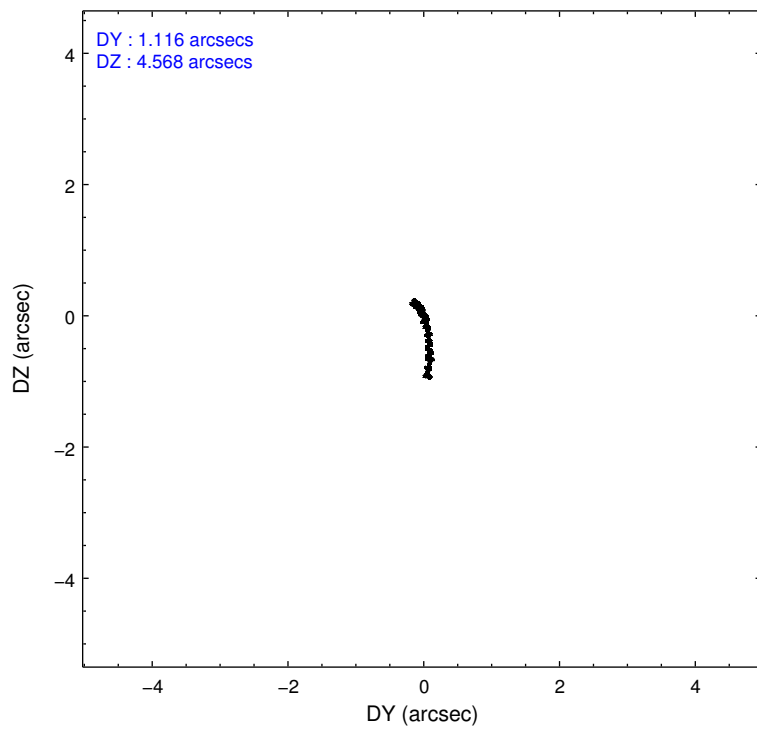
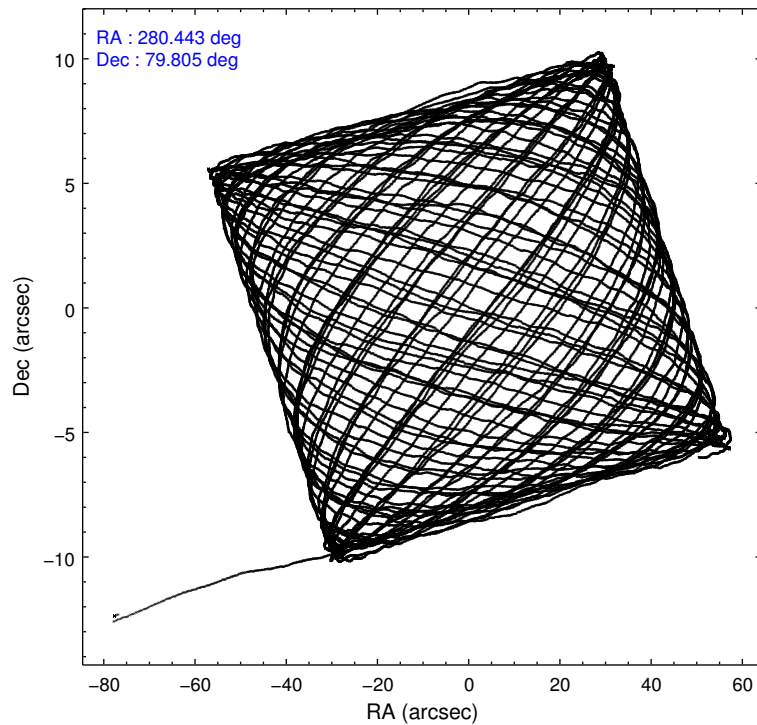
### 2.1.4 Events

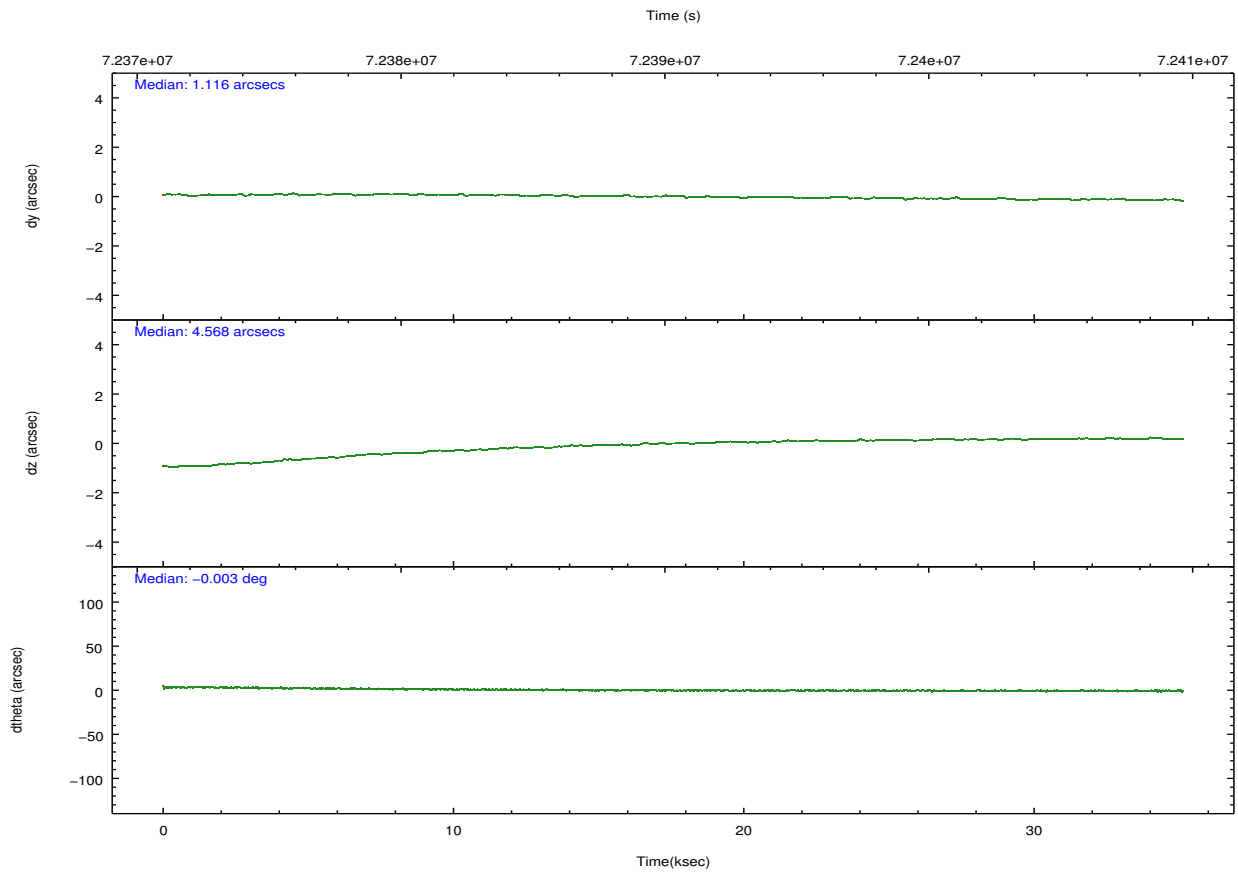
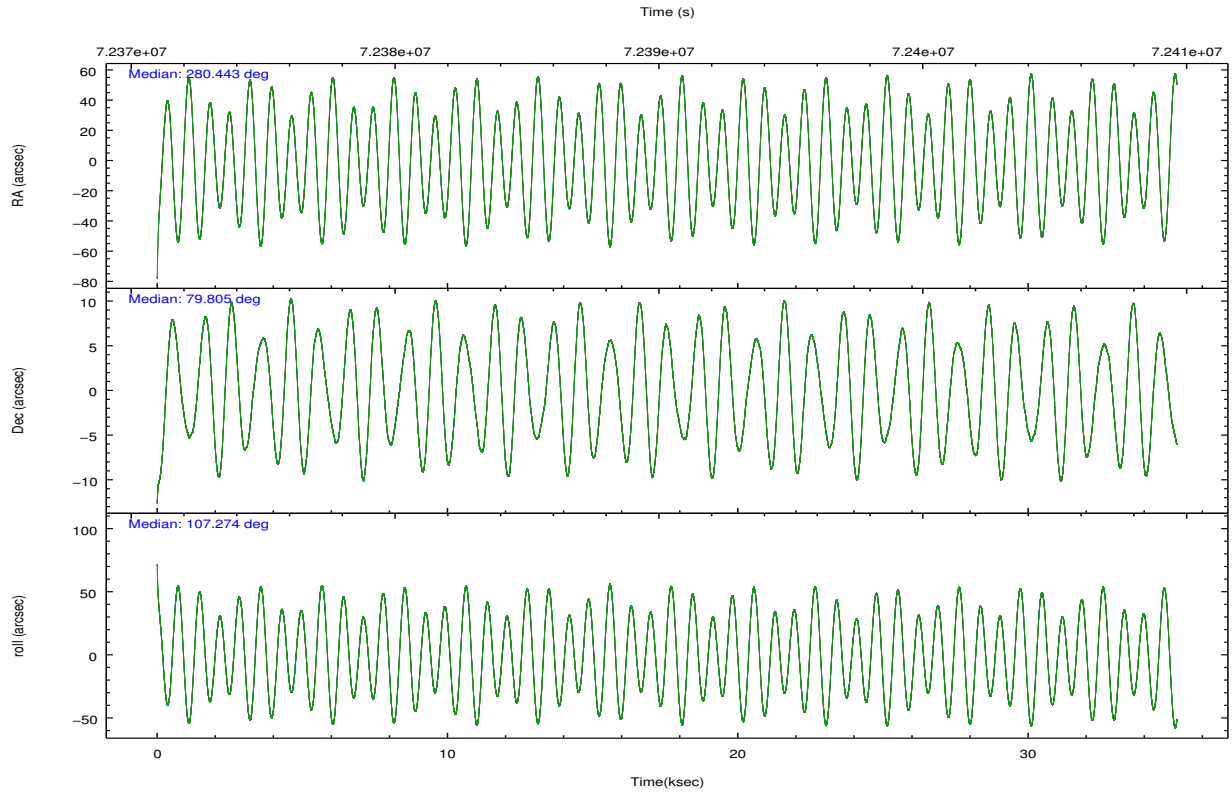
	ccd 2	ccd 3	ccd 5	ccd 6	ccd 7	ccd 8		ccd 2	ccd 3	ccd 5	ccd 6	ccd 7	ccd 8
level 1 events	261047	242775	346867	253553	343799	313240	grade 0 events	12202	12341	25154	13577	23176	19907
rejected events	233699	215699	171794	223789	172412	253686		4%	5%	7%	5%	6%	6%
rejected %	89%	88%	49%	88%	50%	80%	grade 1 events	132	103	664	135	635	176
								0%	0%	0%	0%	0%	0%
							grade 2 events	5661	5178	50079	5450	35426	12726
								2%	2%	14%	2%	10%	4%
							grade 3 events	2567	2608	8468	2918	16041	6420
								0%	1%	2%	1%	4%	2%
							grade 4 events	2469	2572	8184	2726	15743	5853
								0%	1%	2%	1%	4%	1%
							grade 5 events	7802	8270	25028	9157	29307	11772
								2%	3%	7%	3%	8%	3%
							grade 6 events	4454	4379	83225	5097	81029	14652
								1%	1%	23%	2%	23%	4%
							grade 7 events	225760	207324	146065	214493	142442	241734
								86%	85%	42%	84%	41%	77%

## 2.2 Compared Parameters

Parameter	Planned	Actual	Parameter	Planned	Actual
Instrument	ACIS	ACIS	Obspar format version number	7	7
Detector	ACIS-235678	ACIS-235678	Obspar file type	PREDICTED	ACTUAL
Grating	NONE	NONE	Obspar update status	NONE	UPDATED
Data mode	FAINT	FAINT	Number of optional ACIS chips dropped	0	0
Observation mode	POINTING	POINTING	On-chip summing requested	N	N
[deg] Pointing RA	280.557409	280.4434470447808	Subarray requested	NONE	NONE
[deg] Pointing Dec	79.786621	79.80523900311222	Alternating exposures requested	N	N
[deg] Pointing Roll	107.013587	107.2823696611646	[s] Primary exposure time	0.000000	3.2
[deg] Roll angle	135.000000	135.000000			
[deg] Roll tolerance	45.000000	45.000000			
Roll constraint allows 180D rotation	N	N			
[mm] SIM focus pos	-0.684267	-0.6828225247311905			
[mm] SIM defocus	0	0.001444936568705701			
[mm] SIM translation stage pos	-190.132523	-190.1400660498719			
[mm] SIM translation stage offset	0	0.00754346686406393			
[s] Observation start time (MET)	72373200.184000	72372024.715994			
Observation start date	2000-04-17T15:38:56	2000-04-17T15:20:24			
[s] Observation end time (MET)	72407875.184000	72408184.66732			
Observation end date	2000-04-18T01:16:51	2000-04-18T01:23:04			
Read mode	TIMED	TIMED			

## 2.3 Aspect



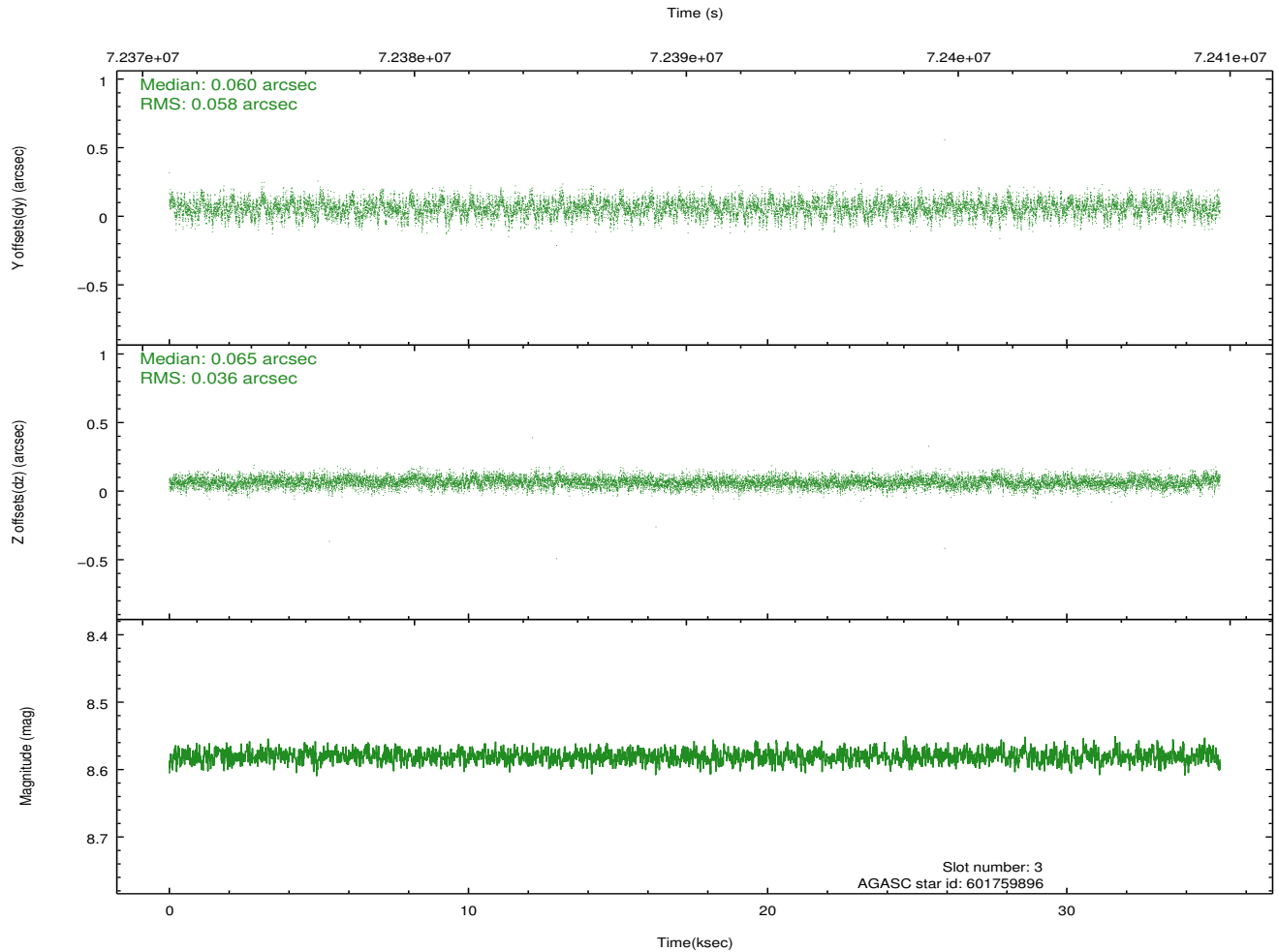
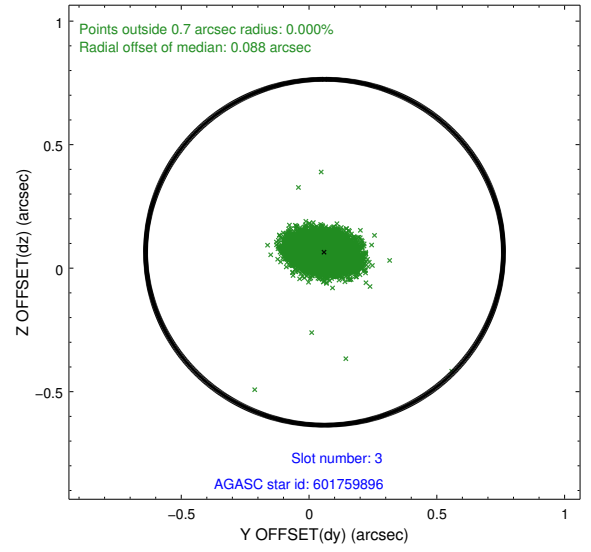
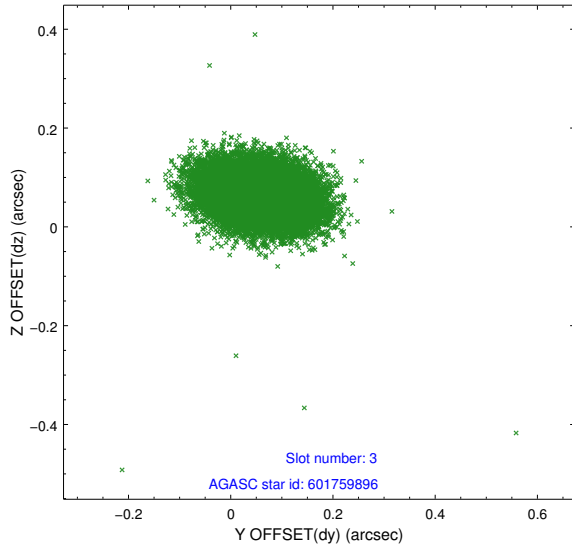


### Slot Statistics

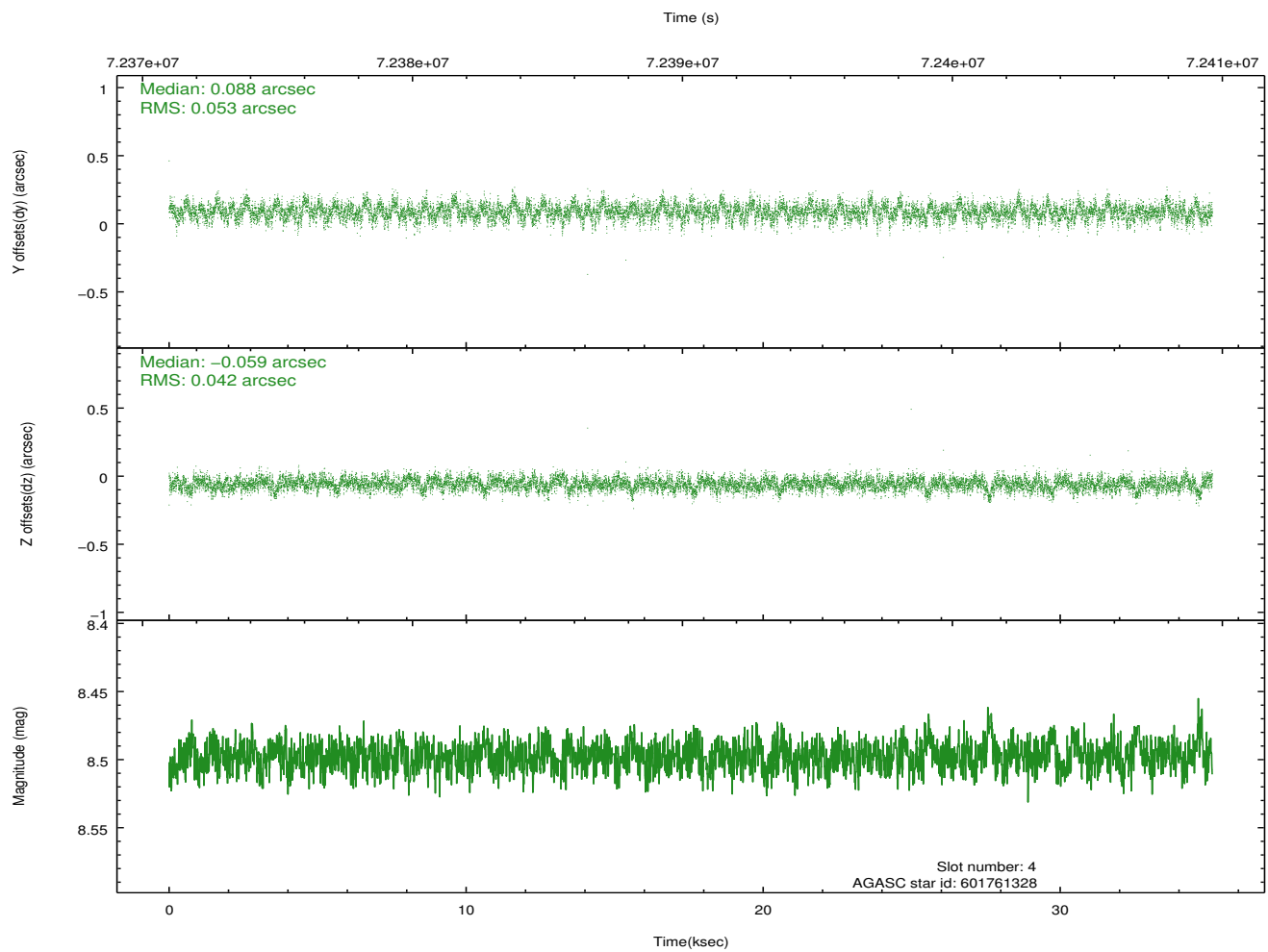
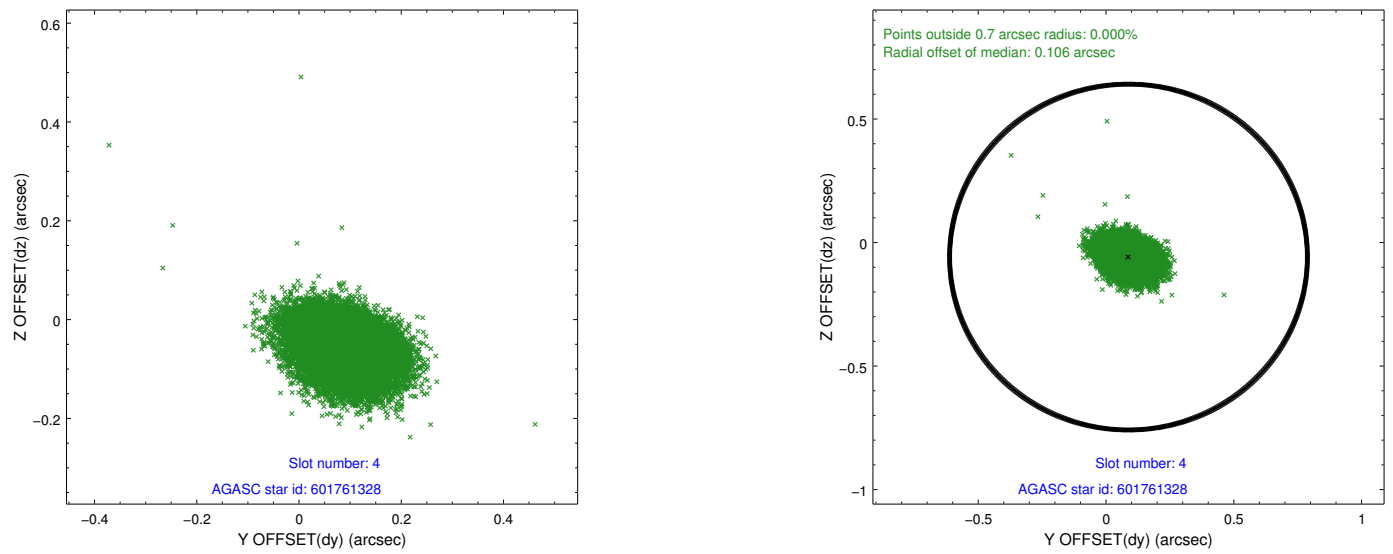
slot	status	id	mag	n_pts	med_dy	med_dz	dr1	dr2	ra	dec	mean_y	mean_z
0	FID	ACIS-S-2	7.11	8567	-0.025	-0.011	0.010	0.018	0.000000	0.000000	-753.74	-1725.52
1	FID	ACIS-S-4	7.21	8567	0.004	0.015	0.007	0.013	0.000000	0.000000	2159.57	182.91
2	FID	ACIS-S-5	7.24	8567	-0.011	0.005	0.009	0.016	0.000000	0.000000	-1806.50	176.66
3	GUIDE	601759896	8.58	17133	0.060	0.065	0.071	0.118	280.559343	80.320538	1838.52	-563.51
4	GUIDE	601761328	8.50	17124	0.088	-0.059	0.071	0.117	281.886981	80.160540	1057.95	-1178.95
5	GUIDE	601754488	8.55	17134	-0.155	-0.018	0.079	0.122	284.644593	79.389067	-2068.93	-2198.50
6	GUIDE	600054128	9.50	17125	-0.050	0.079	0.097	0.158	277.703619	79.772966	529.58	1744.59
7	GUIDE	600052640	9.77	17117	0.051	-0.064	0.125	0.204	278.415810	79.242030	-1427.92	1941.32

## 2.4 Star Slots

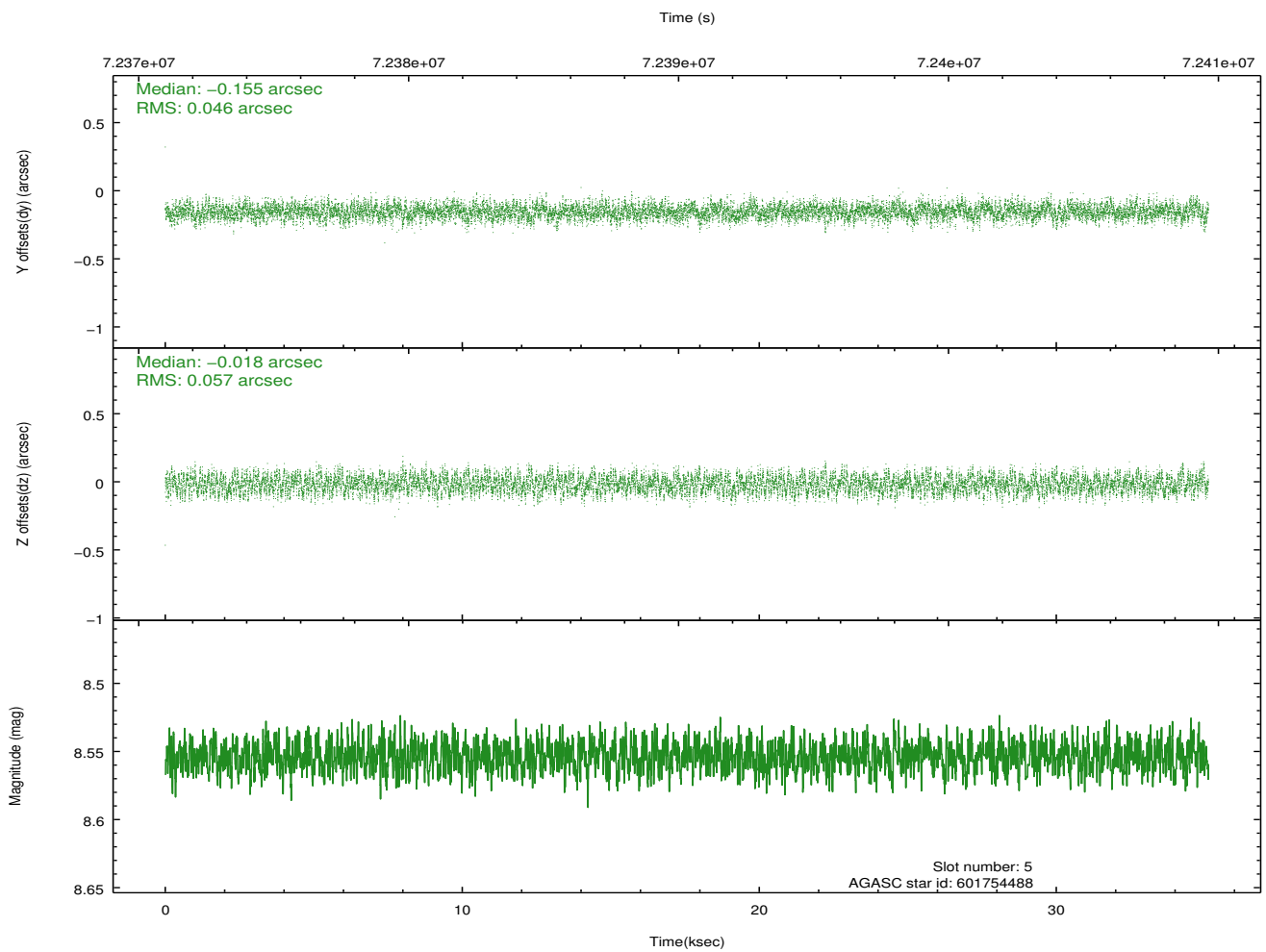
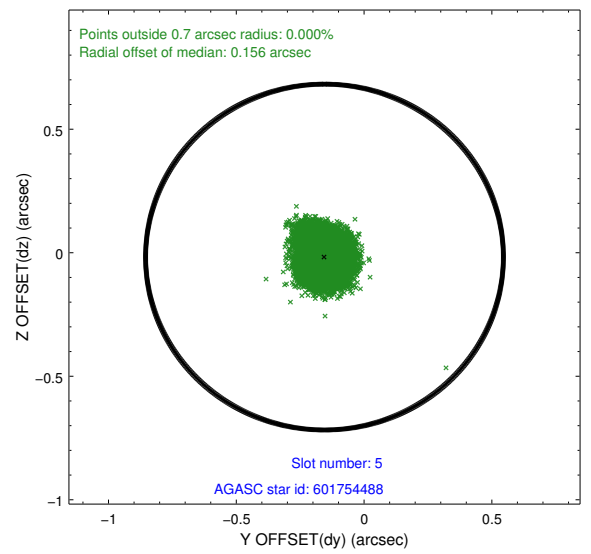
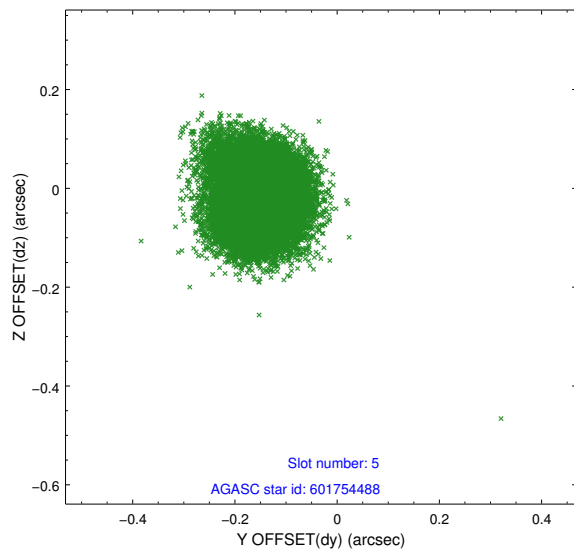
### 2.4.1 Slot 3



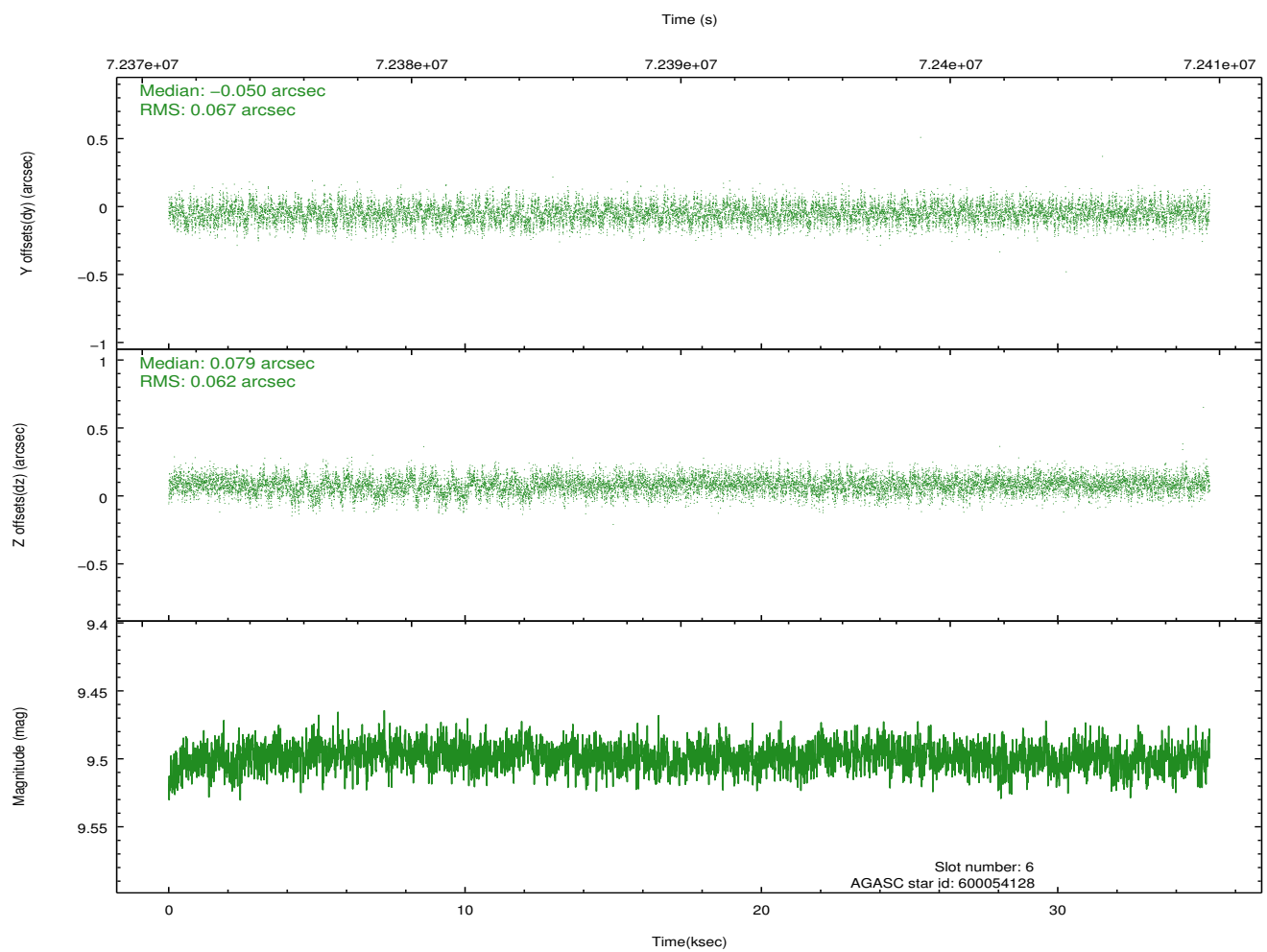
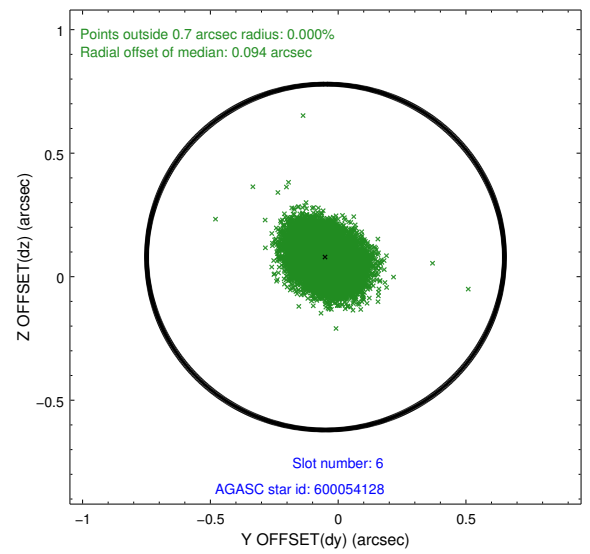
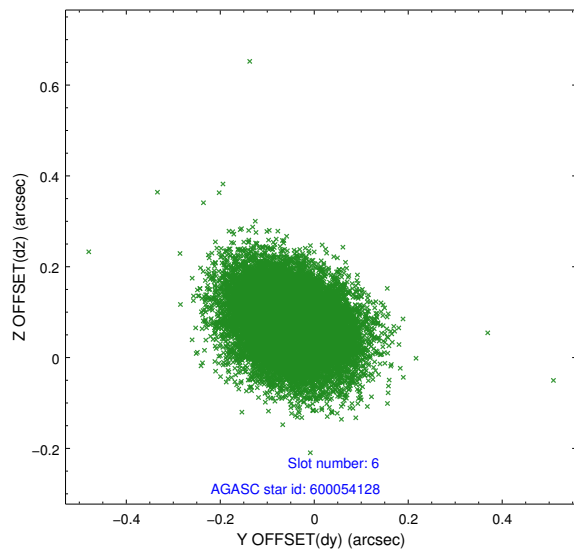
## 2.4.2 Slot 4



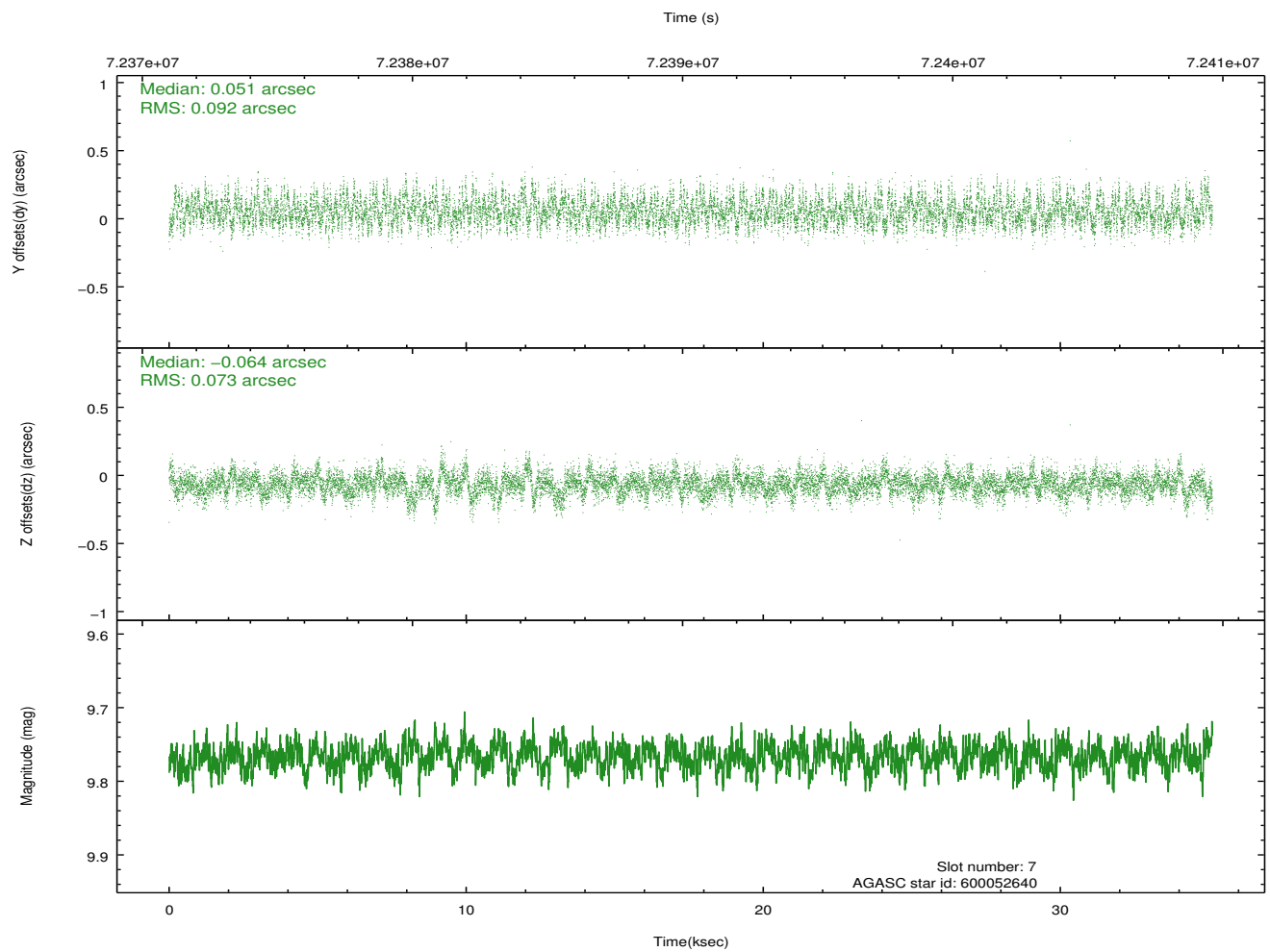
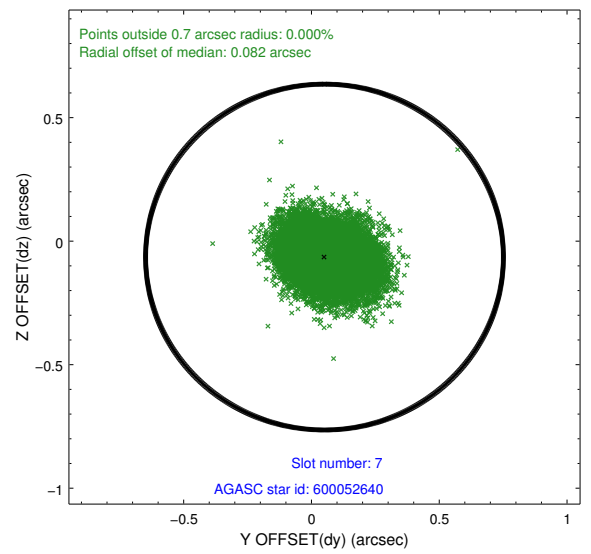
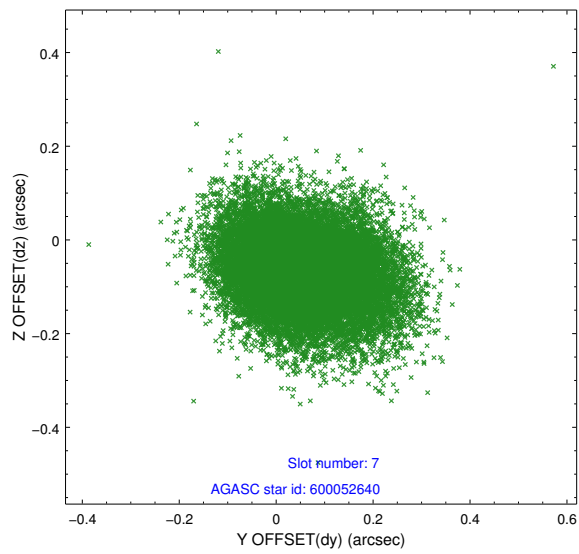
### 2.4.3 Slot 5



## 2.4.4 Slot 6

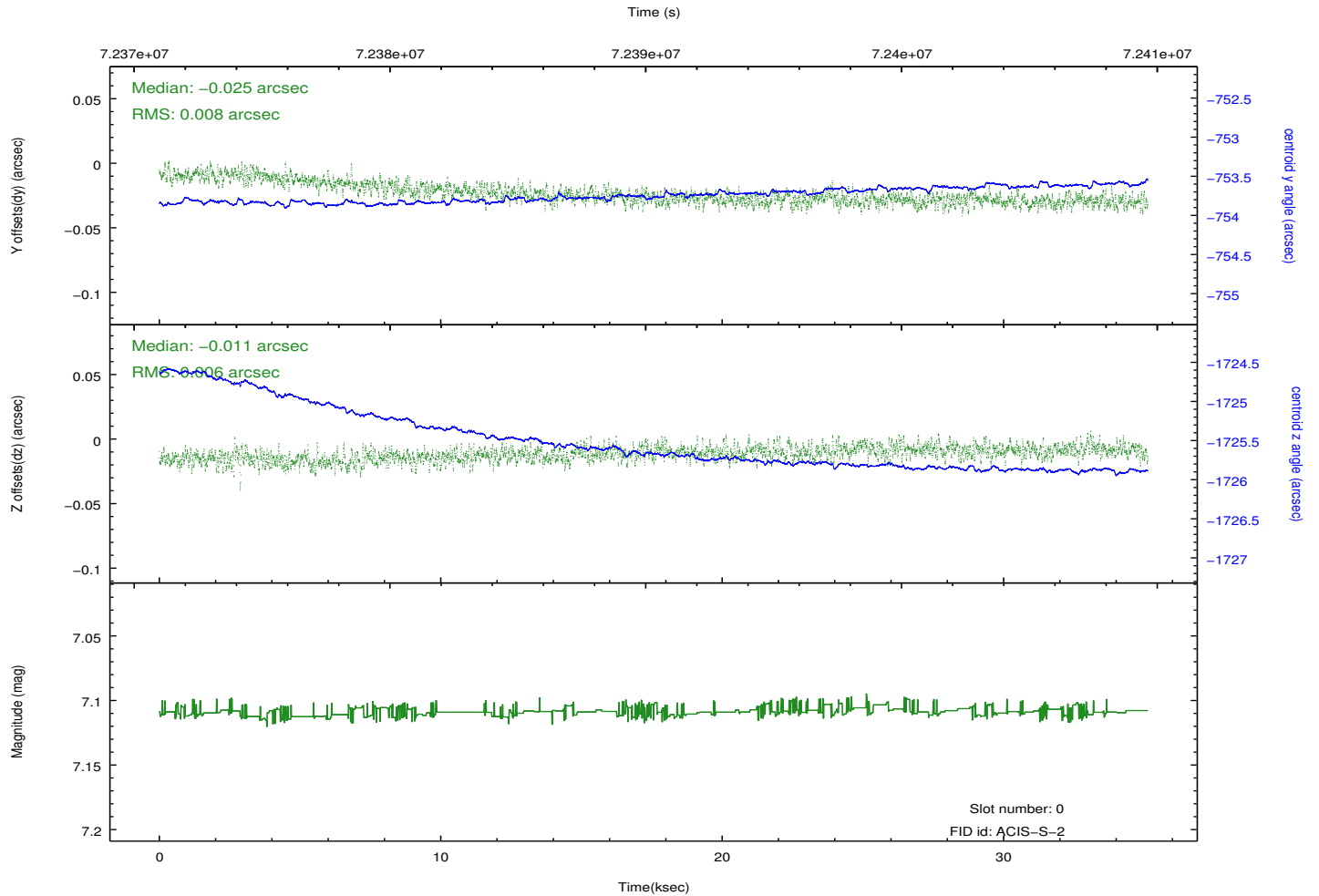
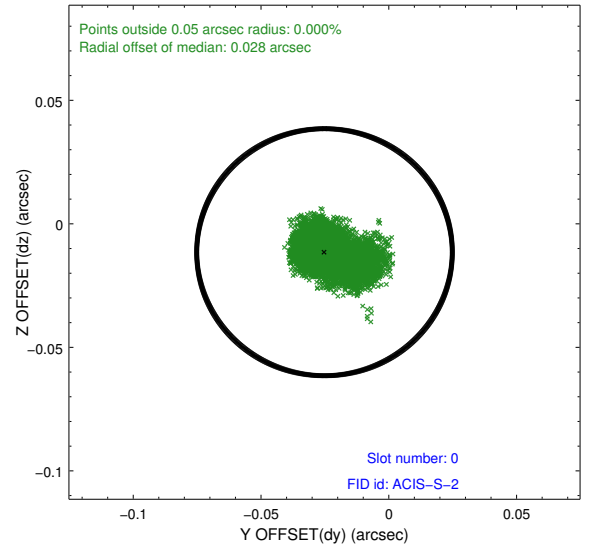
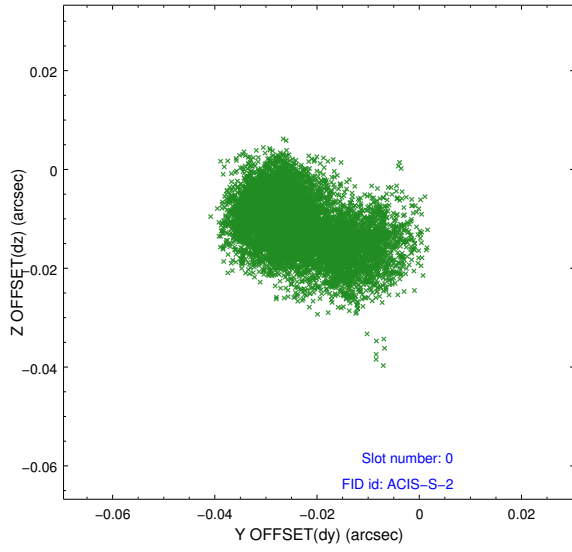


### 2.4.5 Slot 7

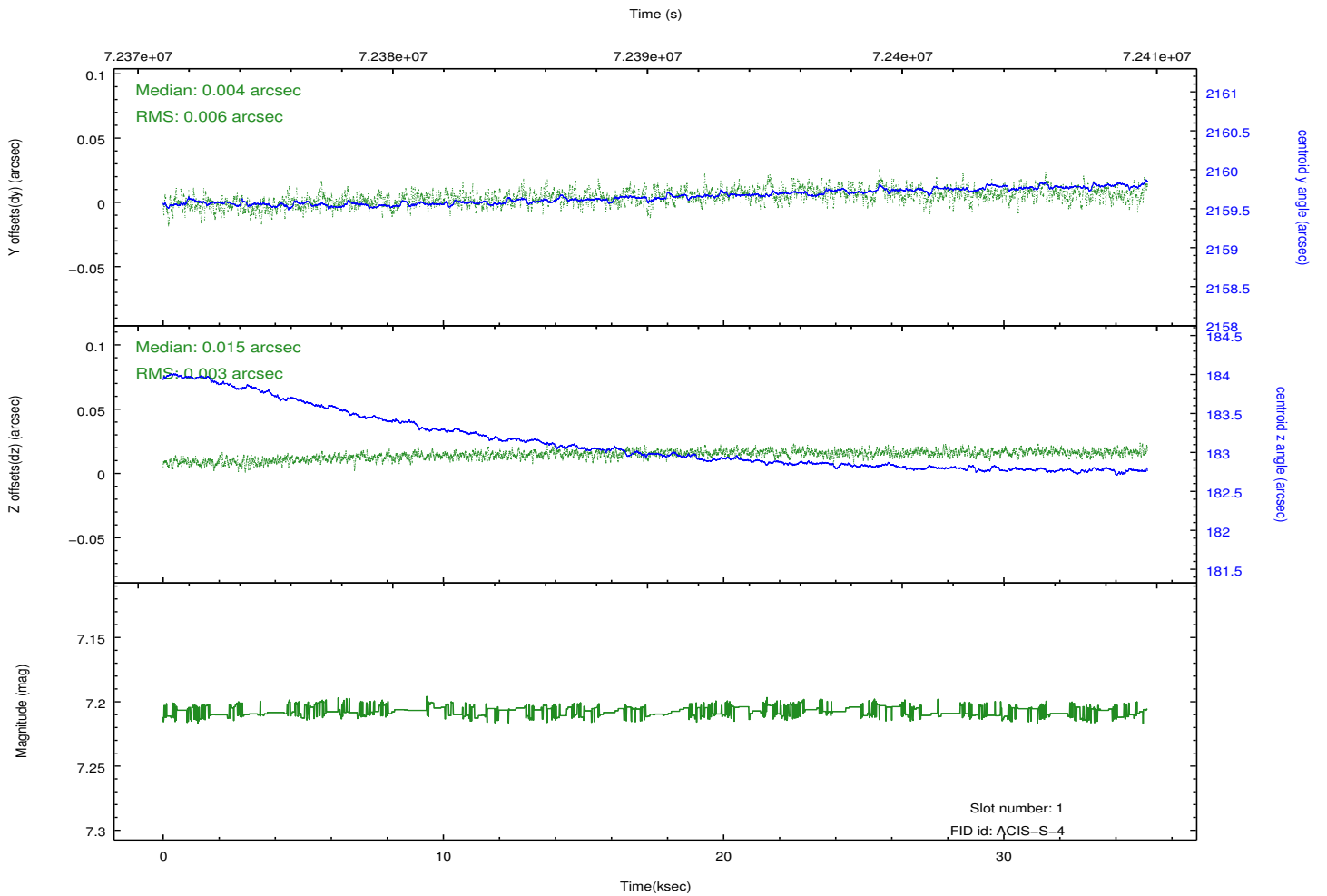
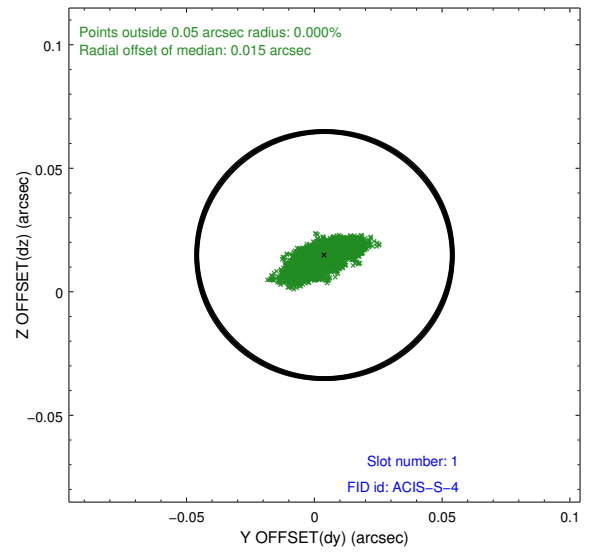
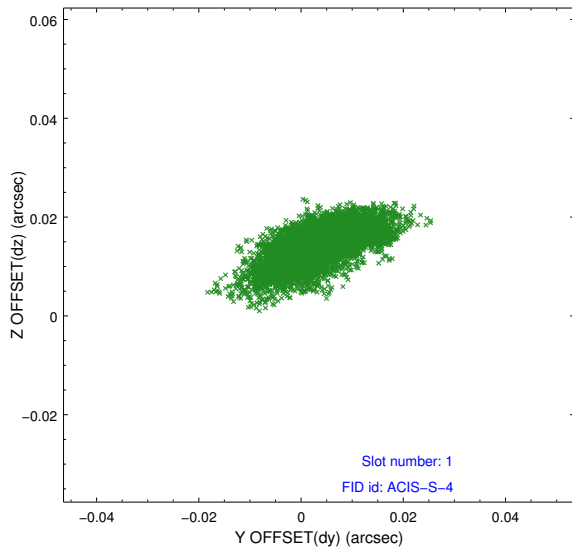


## 2.5 FID Slots

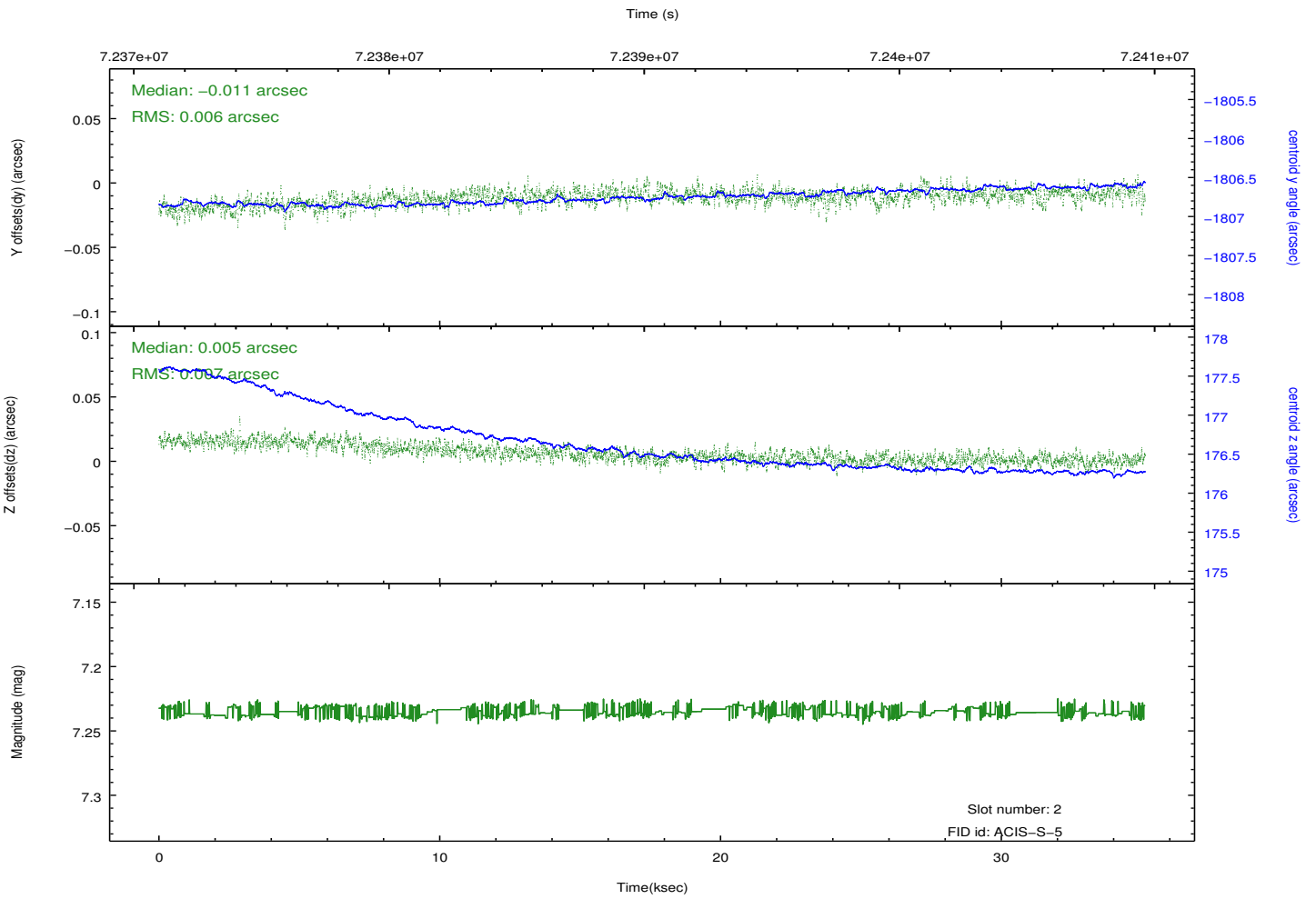
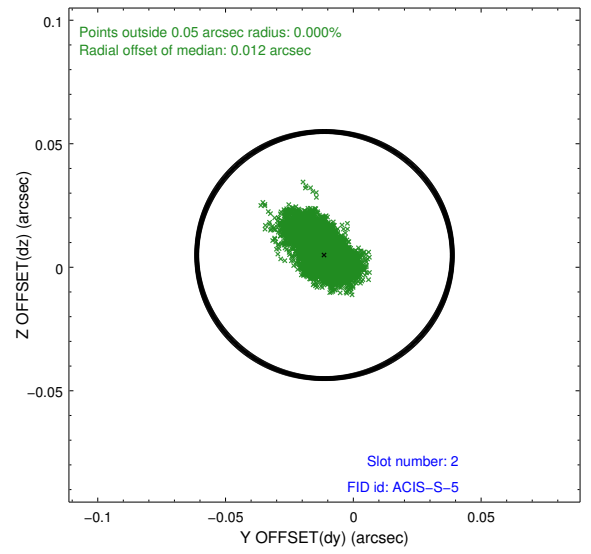
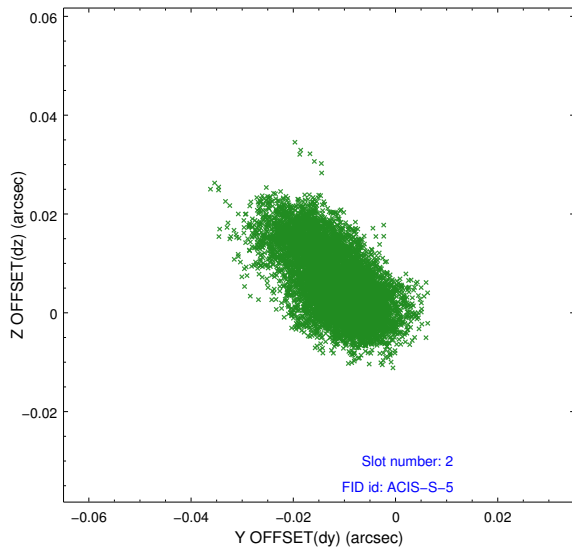
### 2.5.1 Slot 0



## 2.5.2 Slot 1



### 2.5.3 Slot 2



# A Summary

## A.1 Status

V&V Scientist	Jen Lauer
V&V Date (YYYY-MM-DD)	2012.08.28
V&V Edition	1
V&V Disposition and Status	OK
V&V Charge Time	34.409

## A.2 Comments

Roll constraint met.