

# V&V Reference Report

## L2 ASCDS Version : 8.4.4

Observation 8470 - L2 Version 2  
Chandra X-Ray Center

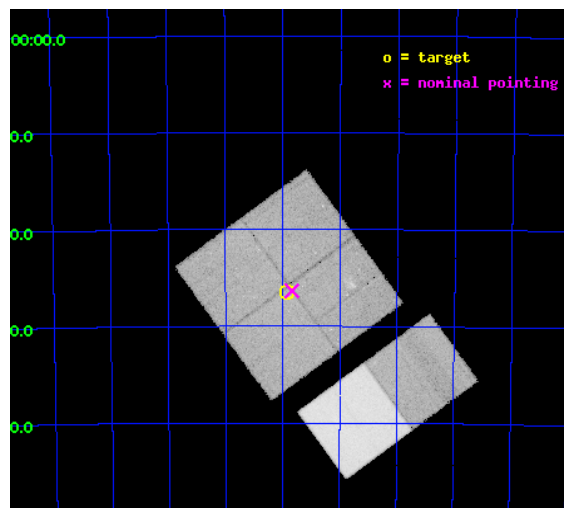
L2 Processing Date : Apr 28 2012

## Contents

<b>1</b>	<b>Front</b>	<b>2</b>
<b>2</b>	<b>OBI</b>	<b>3</b>
2.1	OBI . . . . .	3
2.1.1	Images . . . . .	3
2.1.2	Bias . . . . .	3
2.1.3	Parameters . . . . .	4
2.1.4	Events . . . . .	4
2.2	Compared Parameters . . . . .	5
2.3	Aspect . . . . .	6
2.4	Star Slots . . . . .	9
2.4.1	Slot 3 . . . . .	9
2.4.2	Slot 4 . . . . .	10
2.4.3	Slot 5 . . . . .	11
2.4.4	Slot 6 . . . . .	12
2.4.5	Slot 7 . . . . .	13
2.5	FID Slots . . . . .	14
2.5.1	Slot 0 . . . . .	14
2.5.2	Slot 1 . . . . .	15
2.5.3	Slot 2 . . . . .	16
<b>A</b>	<b>Summary</b>	<b>17</b>
A.1	Status . . . . .	17
A.2	Comments . . . . .	17

# 1 Front

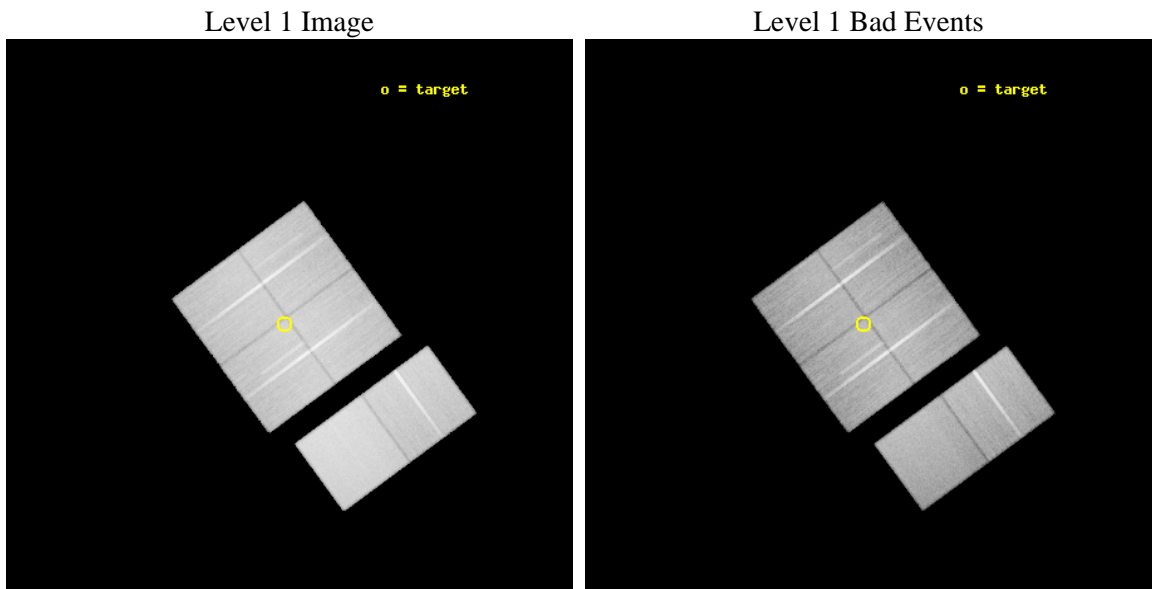
seq_num	600646	Sequence number
obs_id	8470	Observation id
title	Massive Star Formation and Energy Feedback in the Starburst Region N11	Proposal title
observer	Prof. You-Hua Chu	Principal investigator
object	LHA 120-N 11	Source name
dtcycle	0	&#160
cycle	P	events from which exps? Prim/Second/Both
ra_targ	73.979167	Observer's specified target RA [deg]
dec_targ	-66.441667	Observer's specified target Dec [deg]
ra_nom	73.960036585315	Nominal RA [deg]
dec_nom	-66.439050336834	Nominal Dec [deg]
roll_nom	143.77484709428	Nominal Roll [deg]
revision	2	Processing version of data
ontime	45247.958821237	Sum of GTIs [s]
livetime	44675.001921593	Livetime [s]
ontime0	45251.199831486	Sum of GTIs [s]
ontime1	45251.199831486	Sum of GTIs [s]
ontime2	45251.199831486	Sum of GTIs [s]
ontime3	45247.958821237	Sum of GTIs [s]
ontime6	45251.199831486	Sum of GTIs [s]
ontime7	45251.199831486	Sum of GTIs [s]
l2events	485236	Number of level 2 events



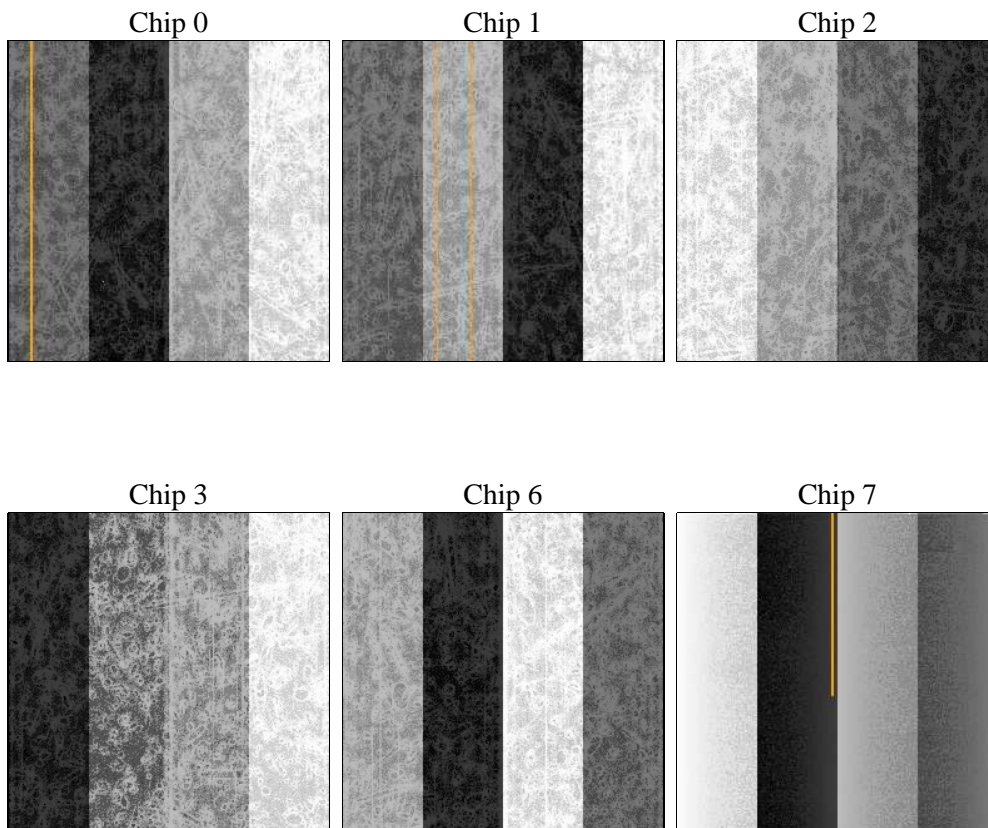
## 2 OBI

### 2.1 OBI

#### 2.1.1 Images



#### 2.1.2 Bias



### 2.1.3 Parameters

obi_num	0	Obi number	sched_exp_time	45300.265000	[s] Scheduled observation exposure time
ascdsver	8.4.4	Processing system revision	ontime	45247.958821237	Sum of GTIs [s]
caldbver	4.4.9	&#160	ontime0	45251.199831486	Sum of GTIs [s]
date	2012-04-28T01:57:58	Date and time of file creation	ontime1	45251.199831486	Sum of GTIs [s]
revision	2	Processing version of data	ontime2	45251.199831486	Sum of GTIs [s]
			ontime3	45247.958821237	Sum of GTIs [s]
			ontime6	45251.199831486	Sum of GTIs [s]
			ontime7	45251.199831486	Sum of GTIs [s]
			l1events	2703430	Number of level 1 events

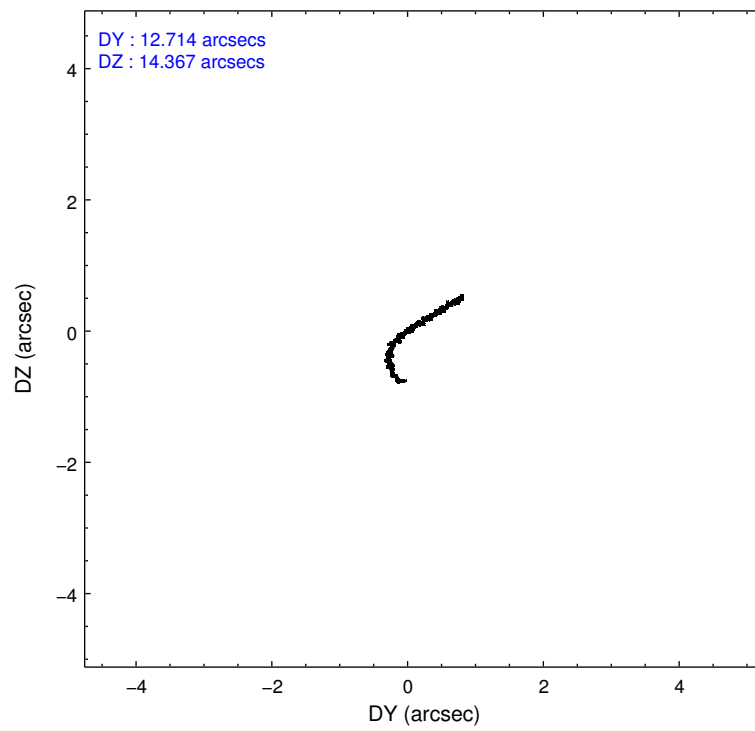
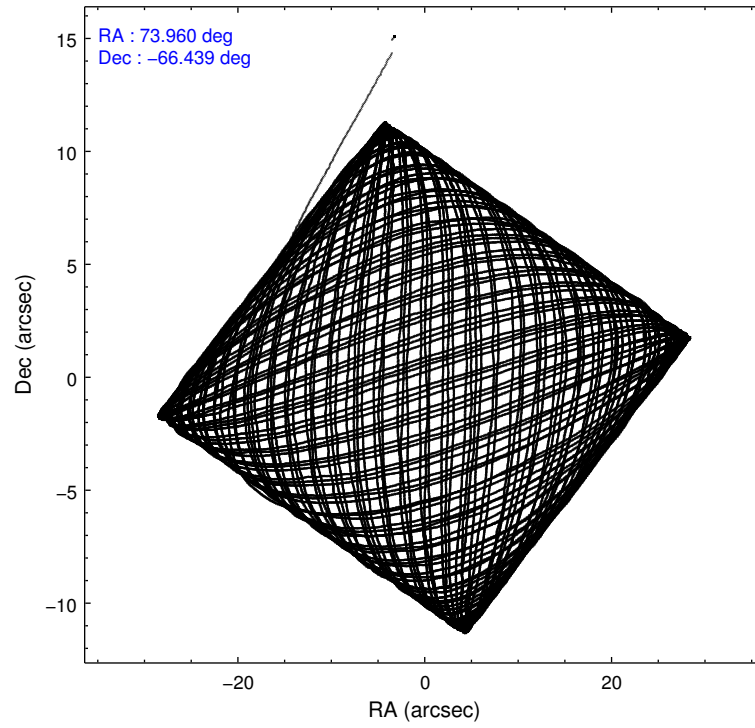
### 2.1.4 Events

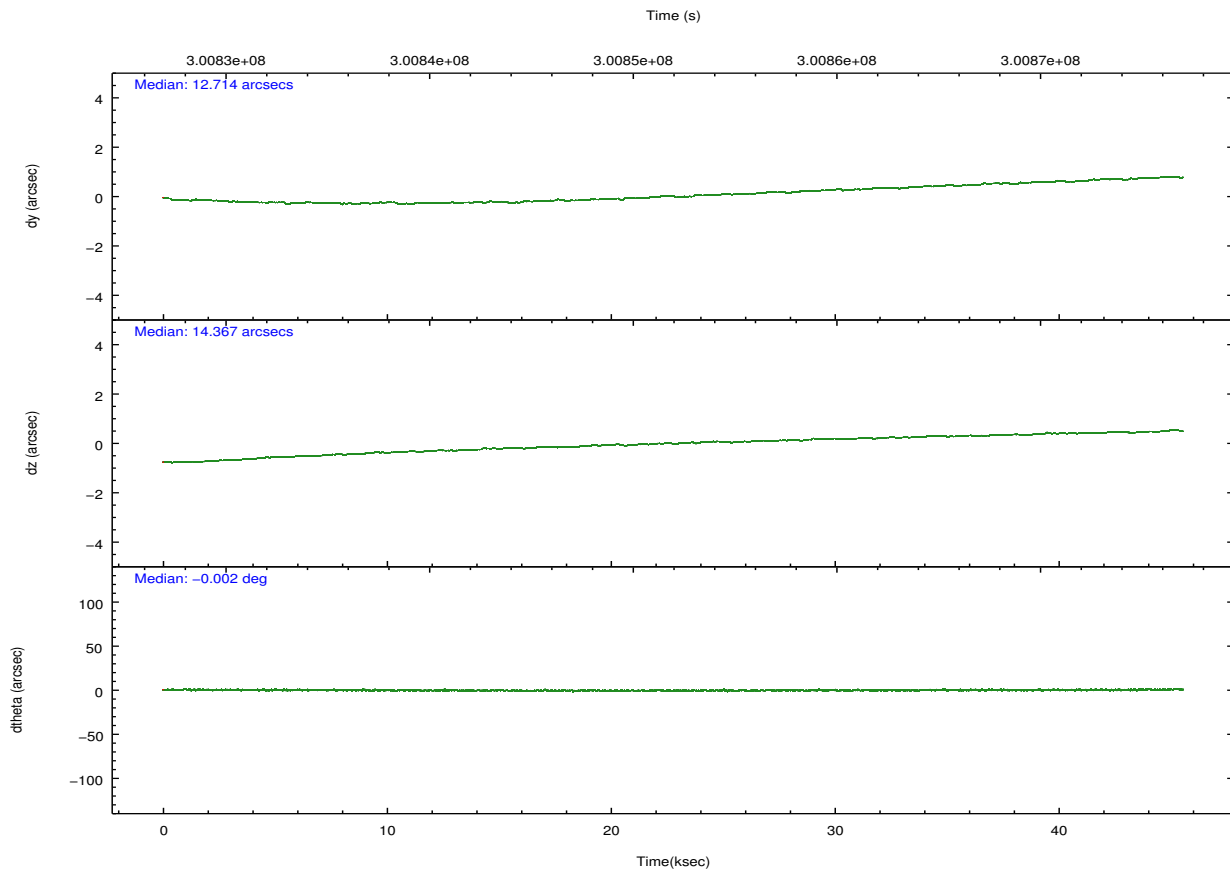
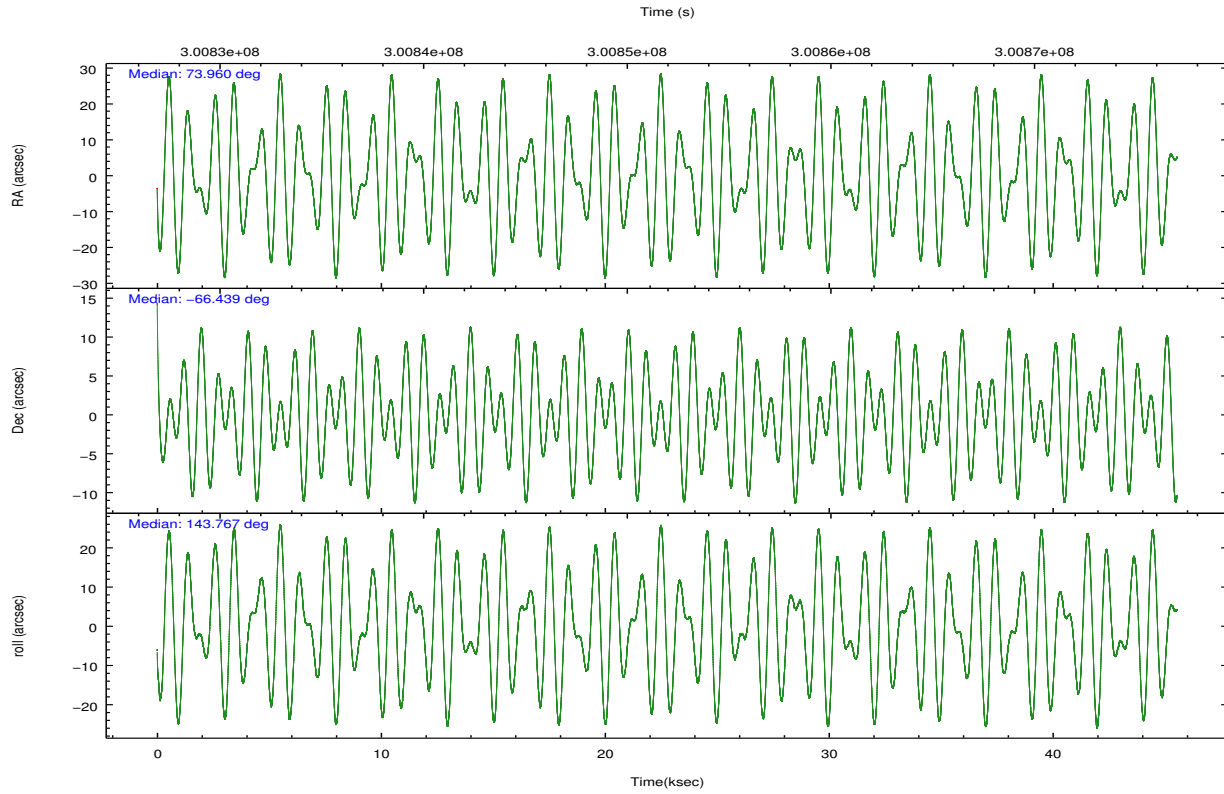
	ccd 0	ccd 1	ccd 2	ccd 3	ccd 6	ccd 7		ccd 0	ccd 1	ccd 2	ccd 3	ccd 6	ccd 7
level 1 events	396270	403353	432842	430297	446492	594176	grade 0 events	24474	24026	26010	25665	21041	22327
rejected events	341128	345017	377706	375307	393037	343434		6%	5%	6%	5%	4%	3%
rejected %	86%	85%	87%	87%	88%	57%	grade 1 events	254	226	332	331	244	618
								0%	0%	0%	0%	0%	0%
							grade 2 events	12068	13288	11234	10445	11929	50945
								3%	3%	2%	2%	2%	8%
							grade 3 events	4928	5219	4730	4941	4826	21454
								1%	1%	1%	1%	1%	3%
							grade 4 events	4646	4957	4706	4893	4857	21259
								1%	1%	1%	1%	1%	3%
							grade 5 events	17273	18711	16743	19685	20699	56027
								4%	4%	3%	4%	4%	9%
							grade 6 events	9031	10854	8464	9050	10809	134783
								2%	2%	1%	2%	2%	22%
							grade 7 events	323596	326072	360623	355287	372087	286763
								81%	80%	83%	82%	83%	48%

## 2.2 Compared Parameters

Parameter	Planned	Actual	Parameter	Planned	Actual
Instrument	ACIS	ACIS	Obspar format version number	7	7
Detector	ACIS-012367	ACIS-012367	Obspar file type	PREDICTED	ACTUAL
Grating	NONE	NONE	Obspar update status	NONE	UPDATED
Data mode	FAINT	FAINT	CCD I0 on	Y	Y
Observation mode	POINTING	POINTING	CCD I1 on	Y	Y
[deg] Pointing RA	74.028462	73.96003658531487	CCD I2 on	Y	Y
[deg] Pointing Dec	-66.441917	-66.43905033683374	CCD I3 on	Y	Y
[deg] Pointing Roll	143.628880	143.7748470942848	CCD S0 on	N	N
[mm] SIM focus pos	-0.782348	-0.7809083437167272	CCD S1 on	N	N
[mm] SIM defocus	0	0.001439871863259334	CCD S2 on	O1	Y
[mm] SIM translation stage pos	-233.592463	-233.5874344608287	CCD S3 on	O2	Y
[mm] SIM translation stage offset	0	-0.005018542100998502	CCD S4 on	N	N
[s] Observation start time (MET)	300829411.184000	300828271.89444	CCD S5 on	N	N
Observation start date	2007-07-14T19:42:26	2007-07-14T19:24:31	Number of optional ACIS chips dropped	0	0
[s] Observation end time (MET)	300874711.184000	300874946.29668	On-chip summing requested	N	N
Observation end date	2007-07-15T08:17:26	2007-07-15T08:22:26	Subarray requested	NONE	NONE
Read mode	TIMED	TIMED	Alternating exposures requested	N	N
			[s] Primary exposure time	0.000000	3.2

## 2.3 Aspect





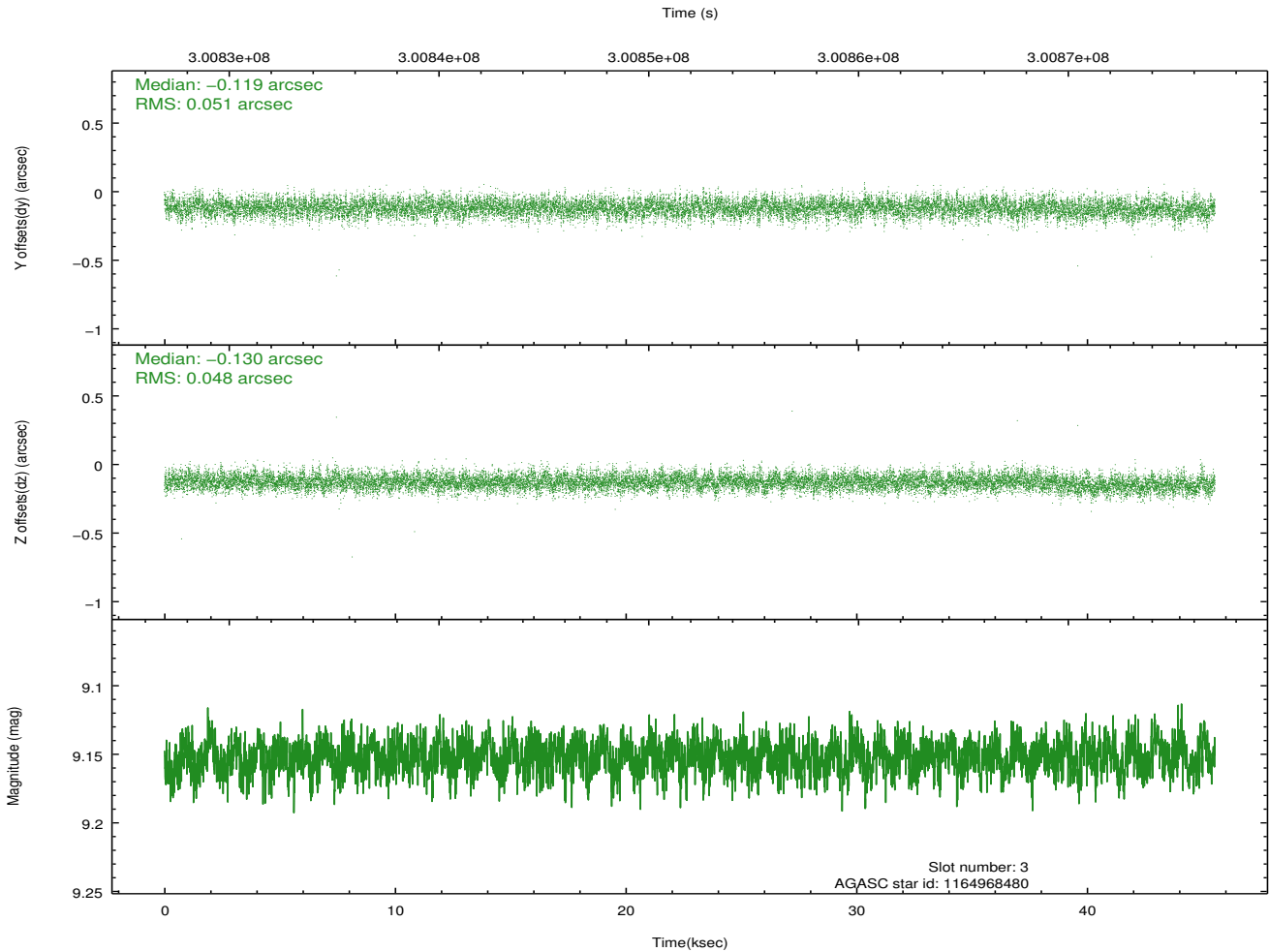
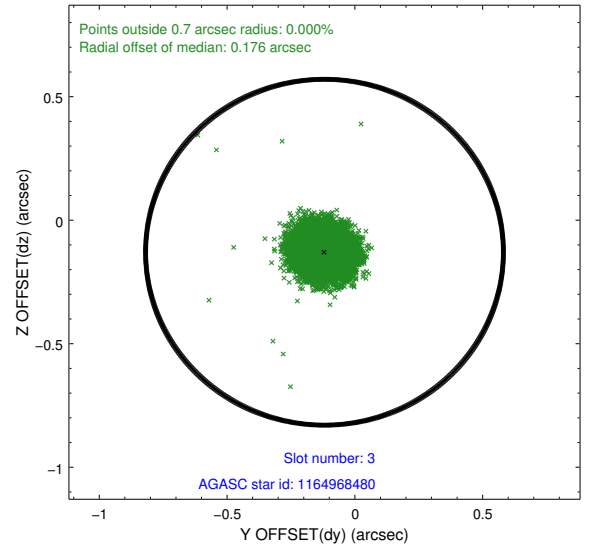
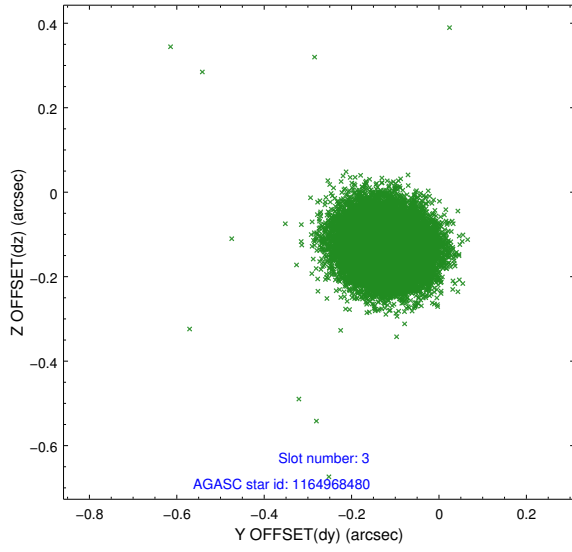
### Slot Statistics

slot	status	id	mag	n_pts	med_dy	med_dz	dr1	dr2	ra	dec	mean_y	mean_z
0	FID	ACIS-I-1	7.23	11106	0.032	-0.002	0.013	0.021	0.000000	0.000000	926.74	-837.90
1	FID	ACIS-I-5	7.22	11107	-0.211	0.037	0.010	0.017	0.000000	0.000000	-1821.63	1059.61
2	FID	ACIS-I-6	7.24	11107	0.089	0.036	0.014	0.023	0.000000	0.000000	392.32	1704.12
3	GUIDE	1164968480	9.15	22202	-0.119	-0.130	0.074	0.120	72.282043	-66.561249	1737.79	1857.09
4	GUIDE	1164970064	9.54	22189	0.026	-0.008	0.114	0.184	72.080416	-66.480750	2144.31	1808.78
5	GUIDE	1165103200	9.14	22201	0.160	-0.043	0.090	0.145	74.569037	-66.260082	-244.03	-988.89
6	GUIDE	1165103840	9.74	22192	-0.128	-0.016	0.105	0.174	74.488651	-66.144068	95.17	-1258.71
7	GUIDE	1165102224	9.52	22186	0.063	0.206	0.133	0.215	75.124856	-66.013882	-385.81	-2180.92

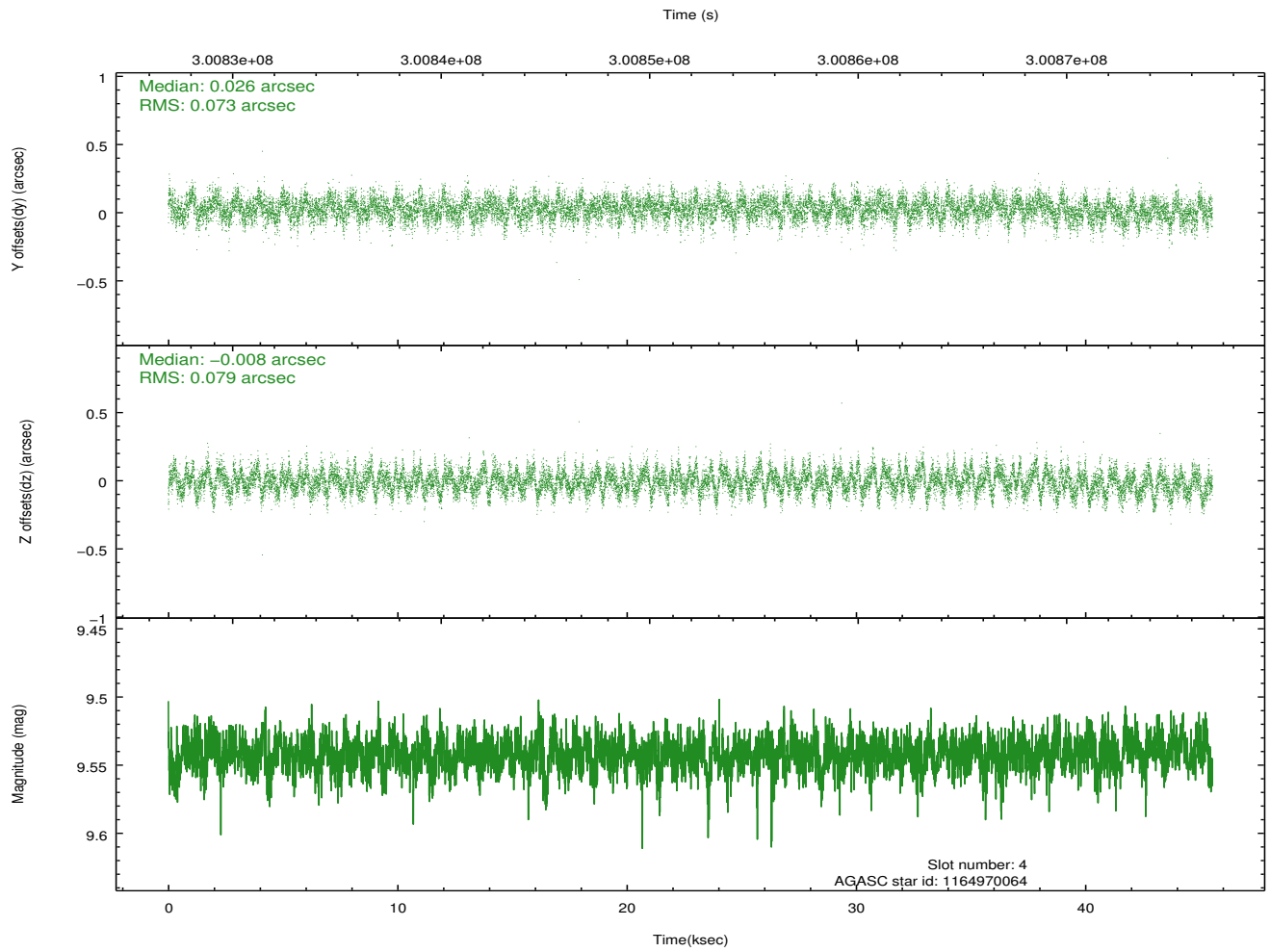
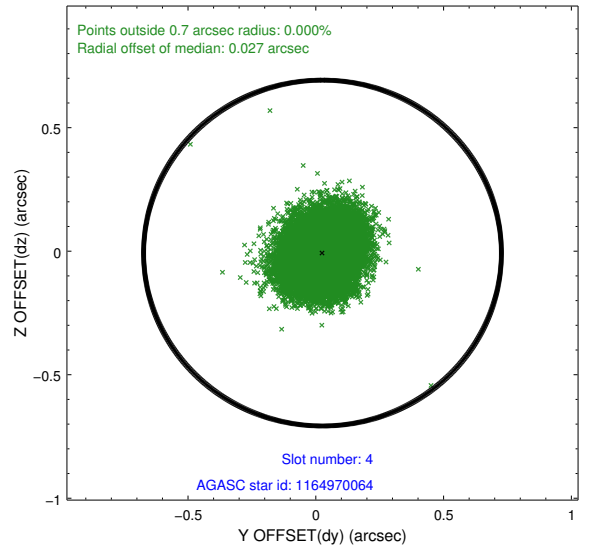
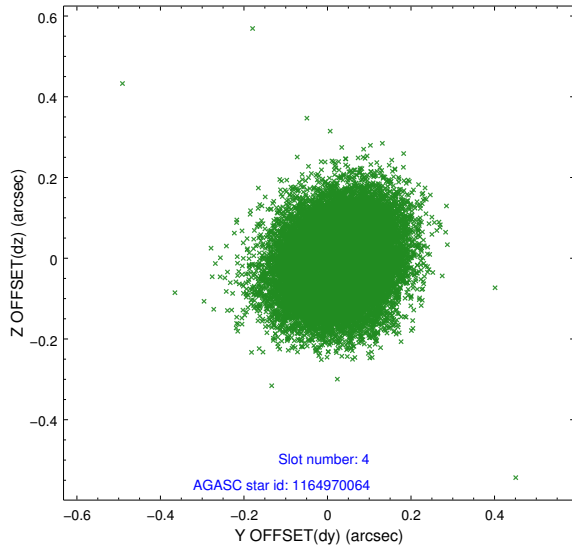
∞

## 2.4 Star Slots

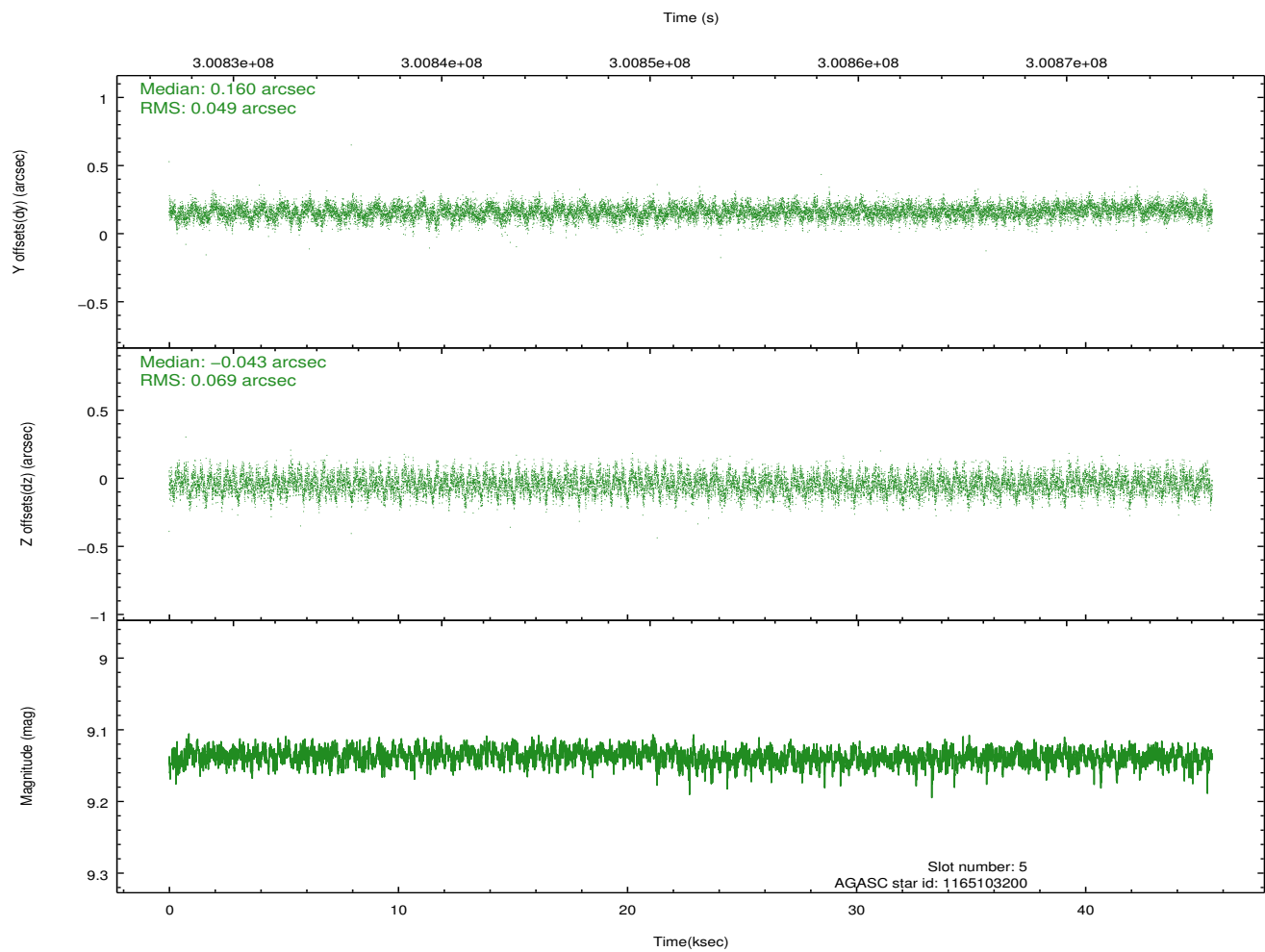
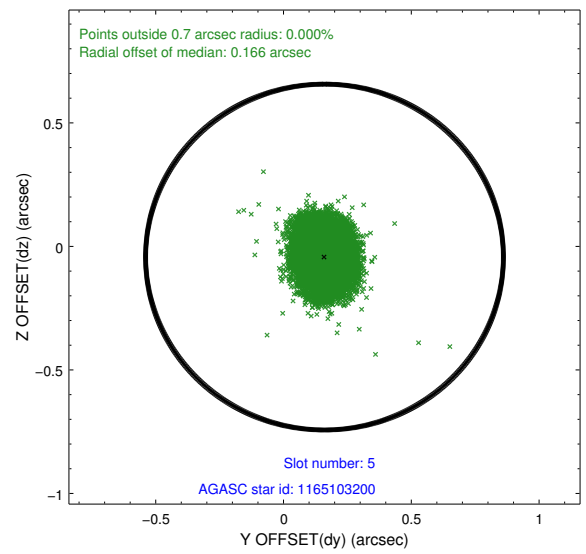
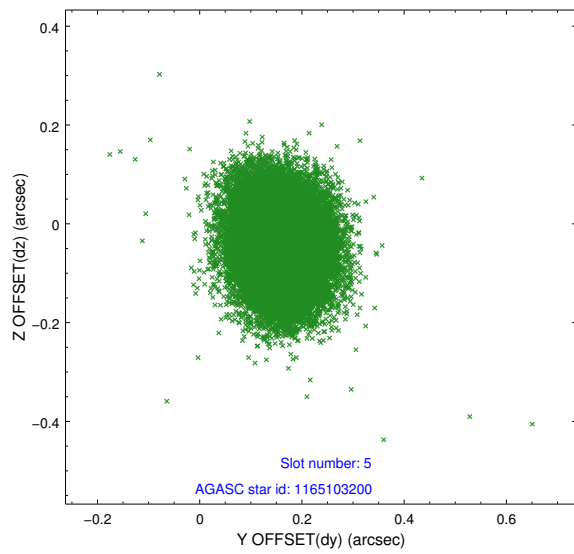
### 2.4.1 Slot 3



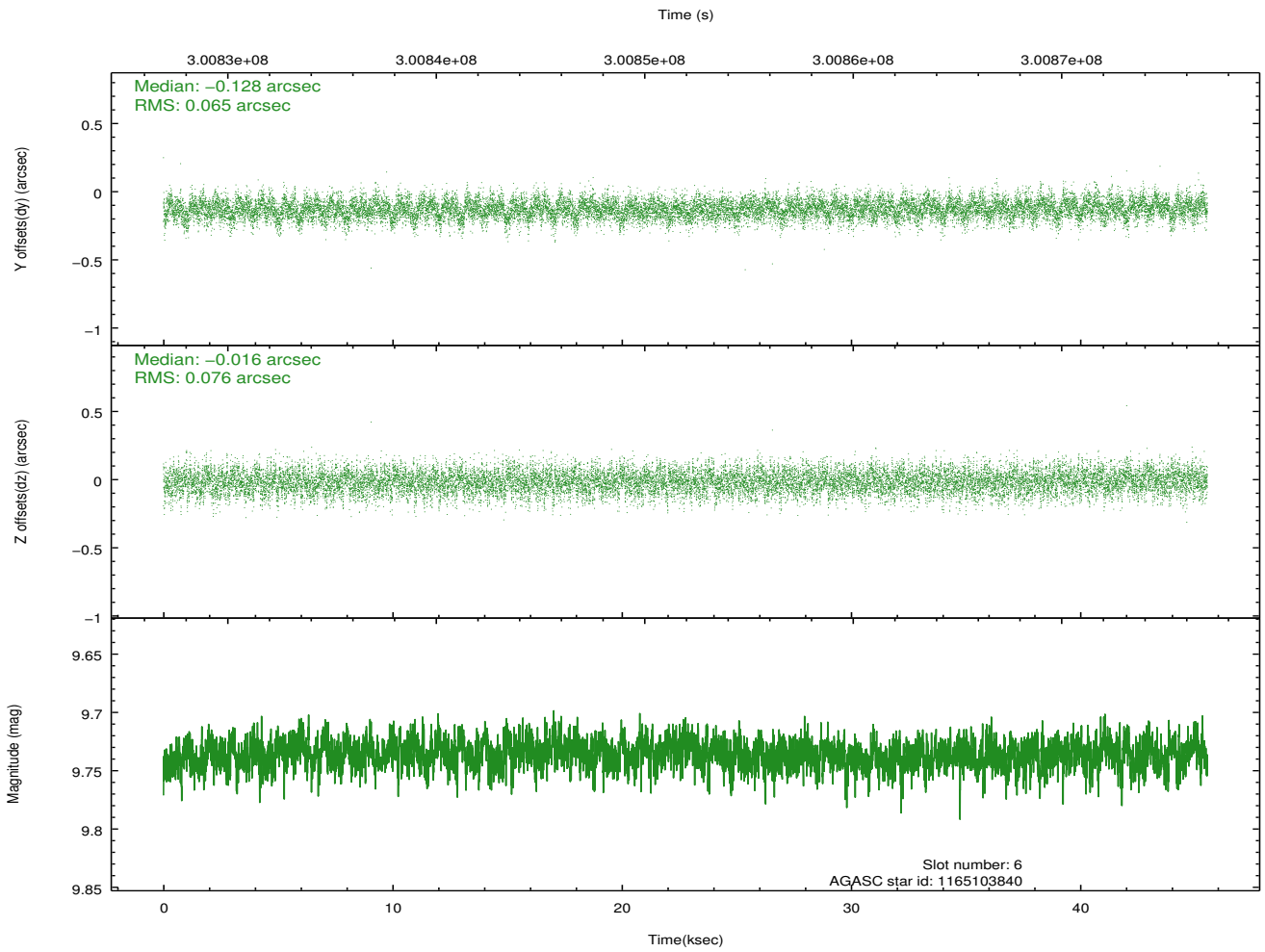
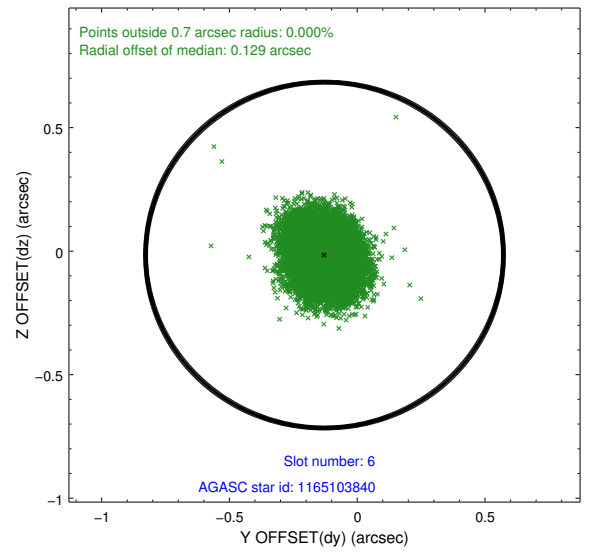
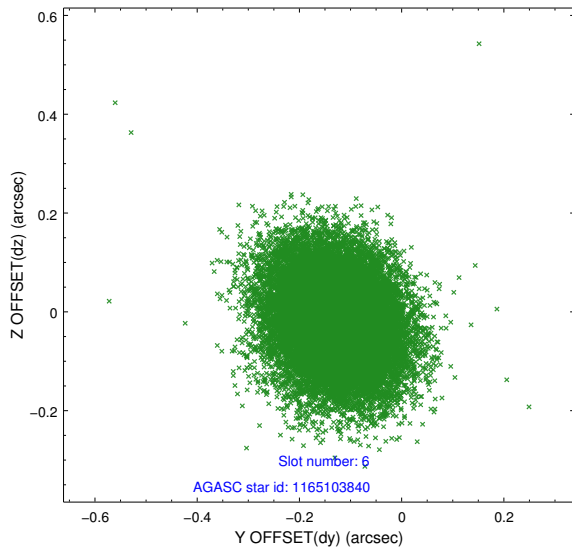
### 2.4.2 Slot 4



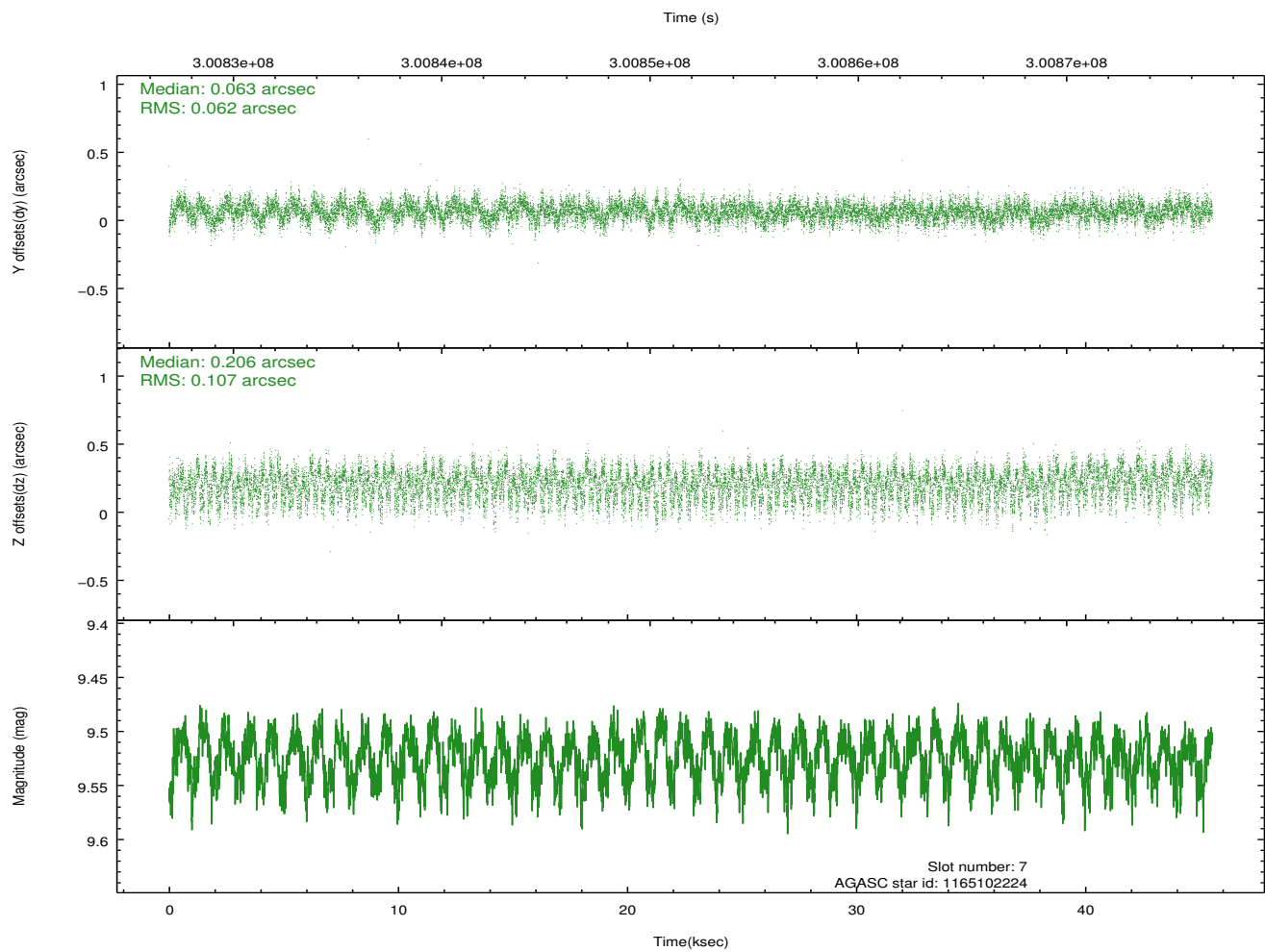
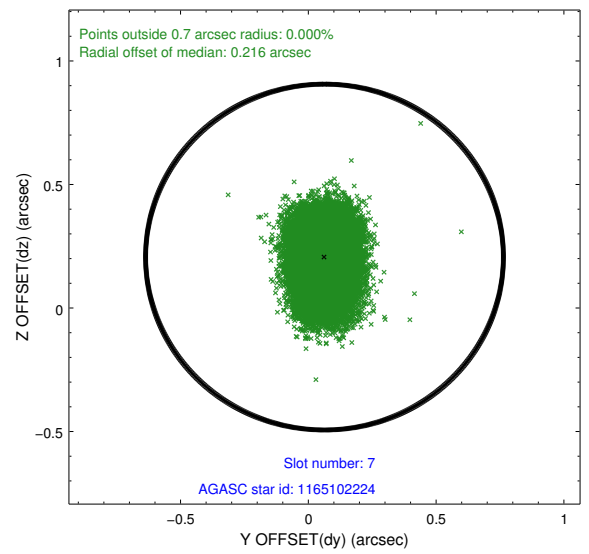
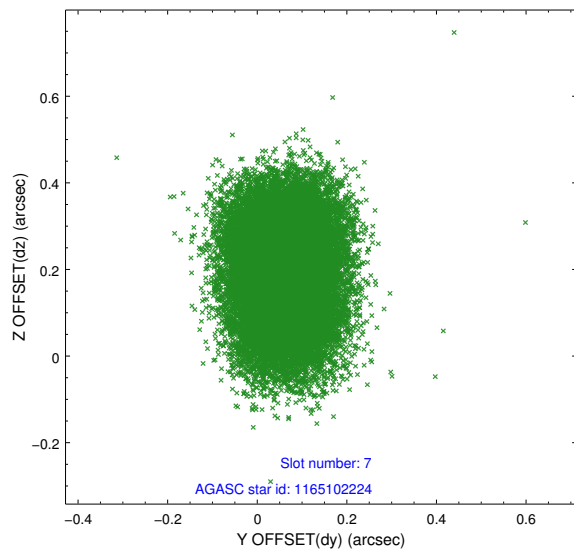
### 2.4.3 Slot 5



### 2.4.4 Slot 6

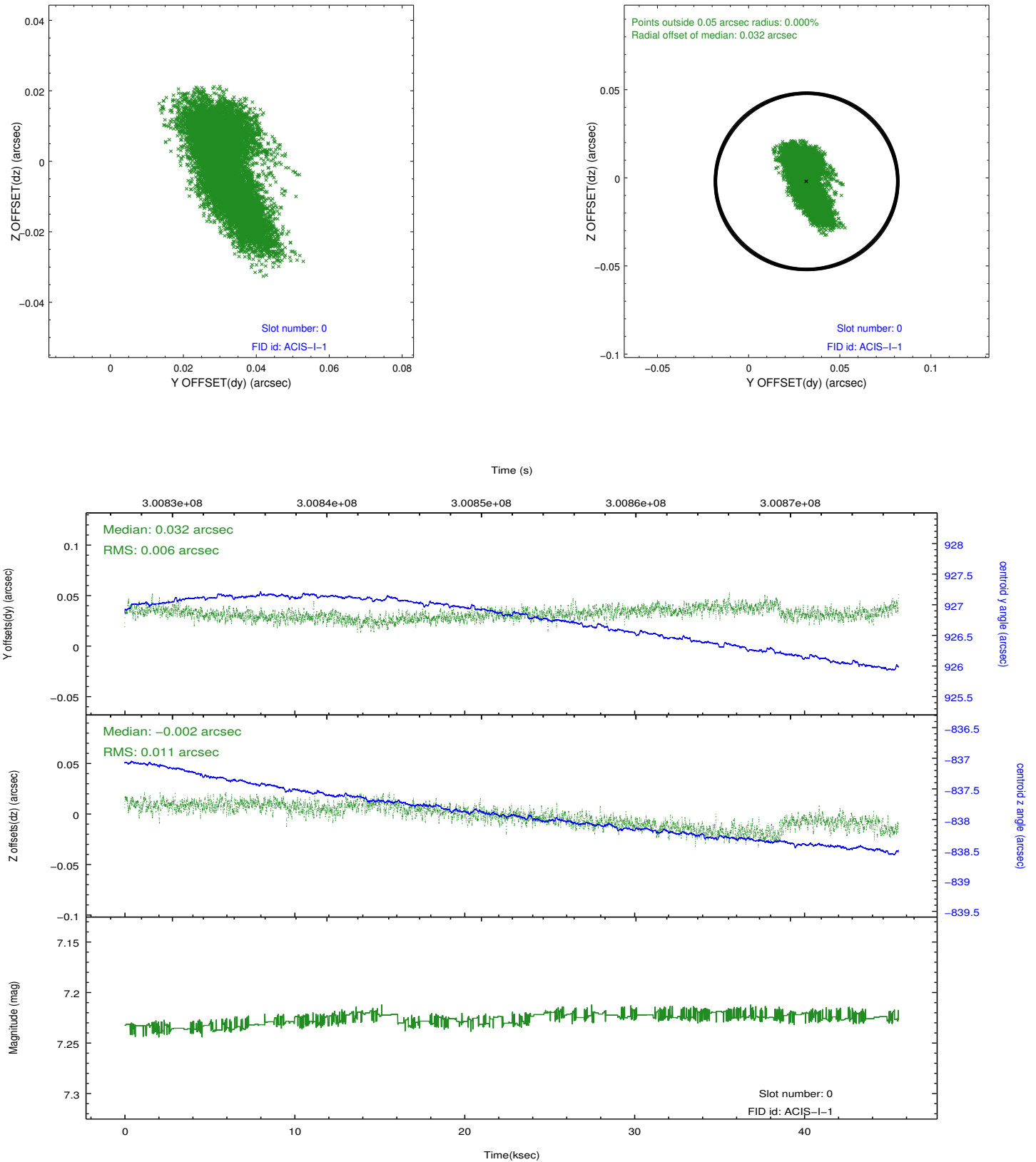


## 2.4.5 Slot 7

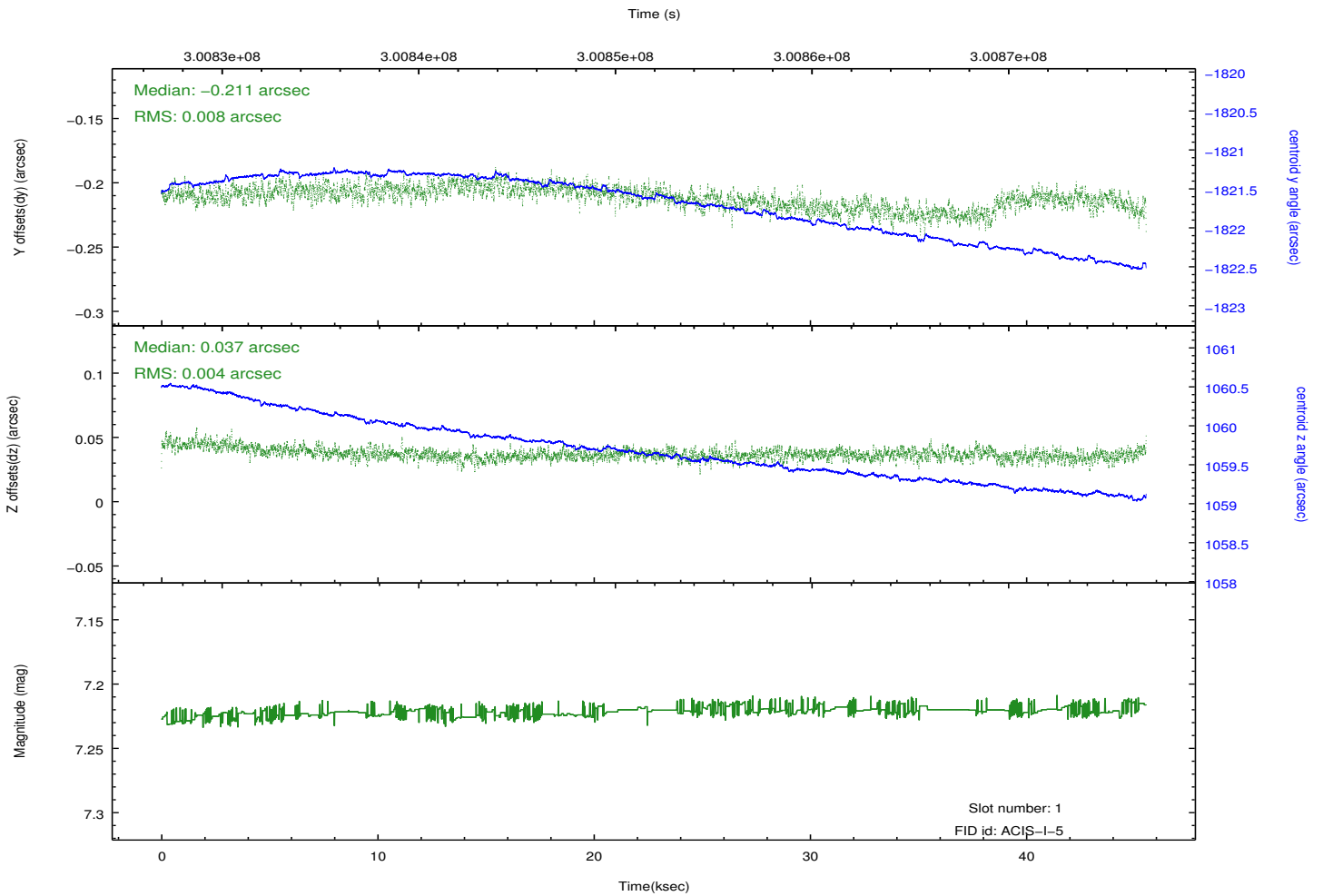
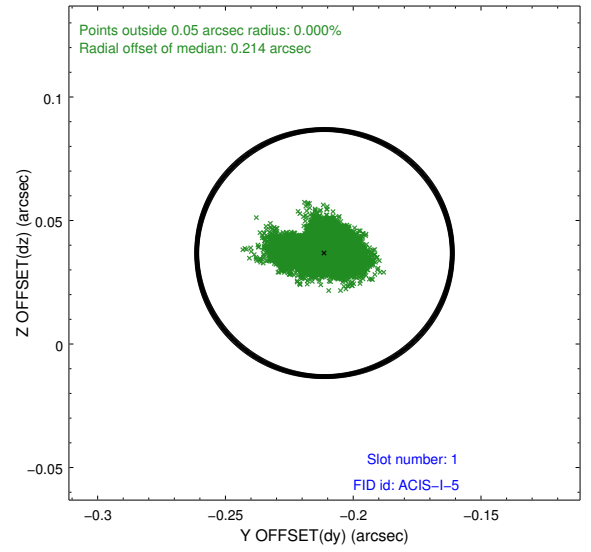
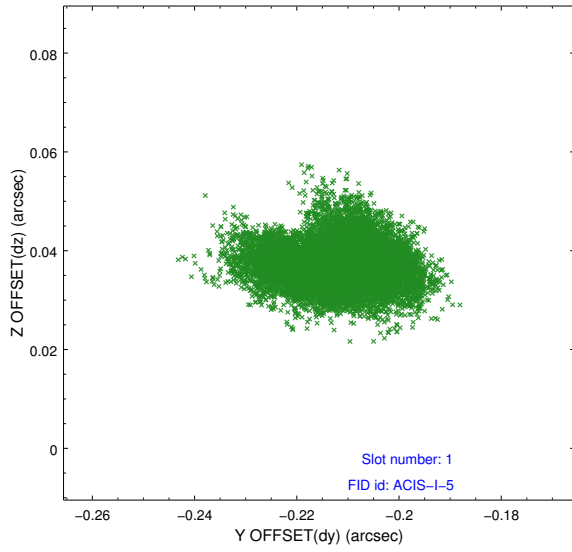


## 2.5 FID Slots

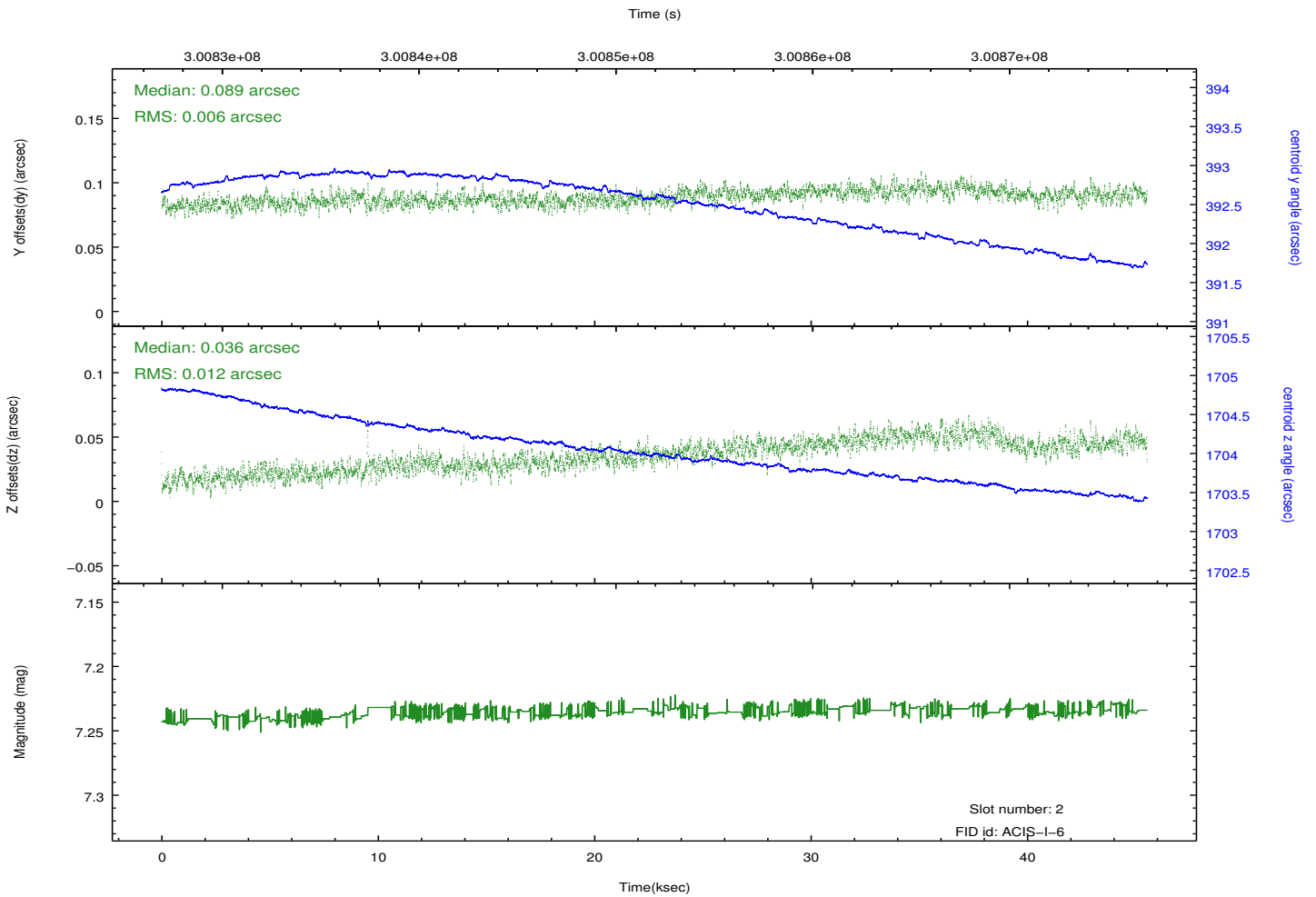
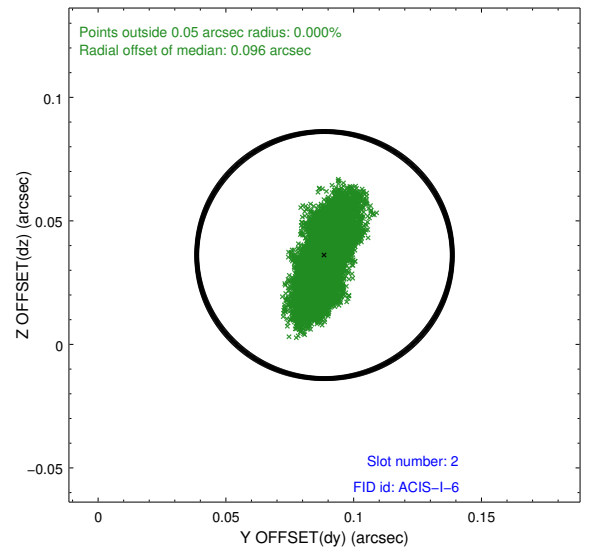
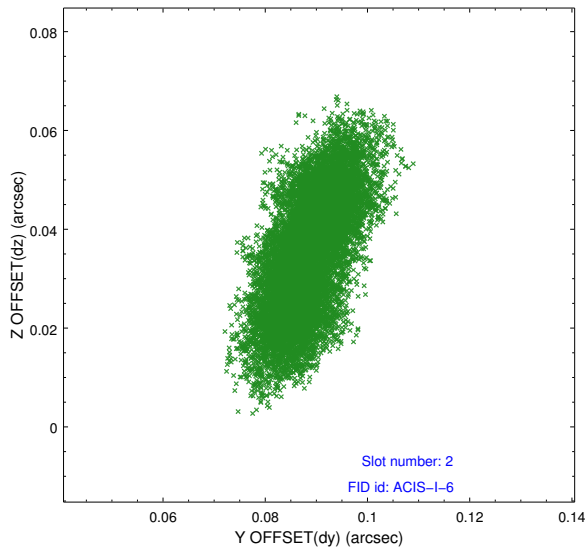
### 2.5.1 Slot 0



## 2.5.2 Slot 1



### 2.5.3 Slot 2



# A Summary

## A.1 Status

V&V Scientist	Jen Lauer
V&V Date (YYYY-MM-DD)	2012.04.30
V&V Edition	1
V&V Disposition and Status	OK
V&V Charge Time	45.2479588

## A.2 Comments