

V&V Reference Report

L2 ASCDS Version : 8.4.5

Observation 920 - L2 Version 4
Chandra X-Ray Center

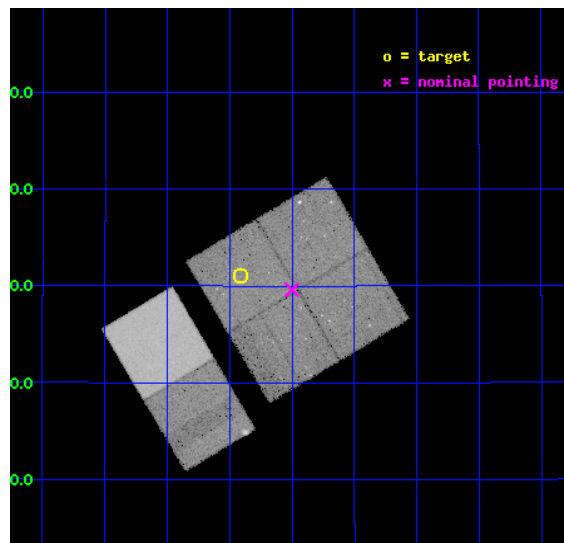
L2 Processing Date : Aug 29 2012

Contents

1	Front	2
2	OBI	3
2.1	OBI	3
2.1.1	Images	3
2.1.2	Bias	3
2.1.3	Parameters	4
2.1.4	Events	4
2.2	Compared Parameters	5
2.3	Aspect	6
2.4	Star Slots	9
2.4.1	Slot 3	9
2.4.2	Slot 4	10
2.4.3	Slot 5	11
2.4.4	Slot 6	12
2.4.5	Slot 7	13
2.5	FID Slots	14
2.5.1	Slot 0	14
2.5.2	Slot 1	15
2.5.3	Slot 2	16
A	Summary	17
A.1	Status	17
A.2	Comments	17

1 Front

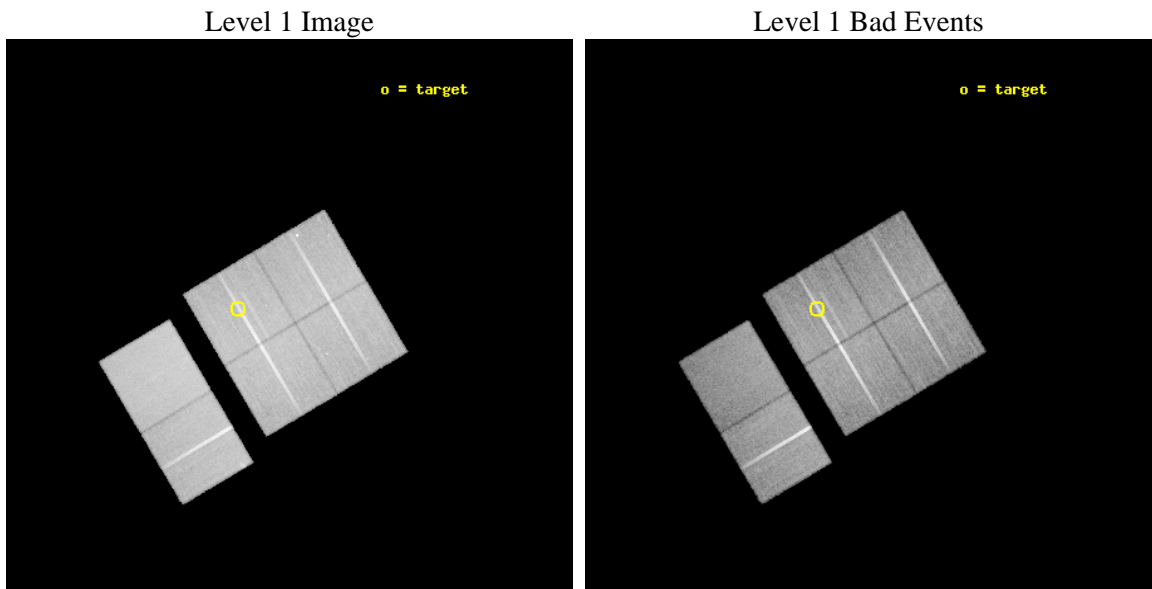
seq_num	800096	Sequence number
obs_id	920	Observation id
title	BENT-DOUBLE RADIO GALAXIES: SIGNPOSTS FOR THE HIGH DENSITY UNIVERSE	
observer	Prof. David Helfand	Principal investigator
object	BD CLUSTER 1338	Source name
dtcycle	0	
cycle	P	events from which exps? Prim/Second/Both
ra_targ	204.60375	Observer's specified target RA [deg]
dec_targ	29.518056	Observer's specified target Dec [deg]
ra_nom	204.50011895343	Nominal RA [deg]
dec_nom	29.493503355096	Nominal Dec [deg]
roll_nom	239.31770643803	Nominal Roll [deg]
revision	4	Processing version of data
ontime	38127.367089748	Sum of GTIs [s]
livetime	37644.575410114	Livetime [s]
ontime0	38130.484810293	Sum of GTIs [s]
ontime1	38137.007830605	Sum of GTIs [s]
ontime2	38127.325999901	Sum of GTIs [s]
ontime3	38127.367089748	Sum of GTIs [s]
ontime6	38133.931000441	Sum of GTIs [s]
ontime7	38137.1309506	Sum of GTIs [s]
l2events	270005	Number of level 2 events



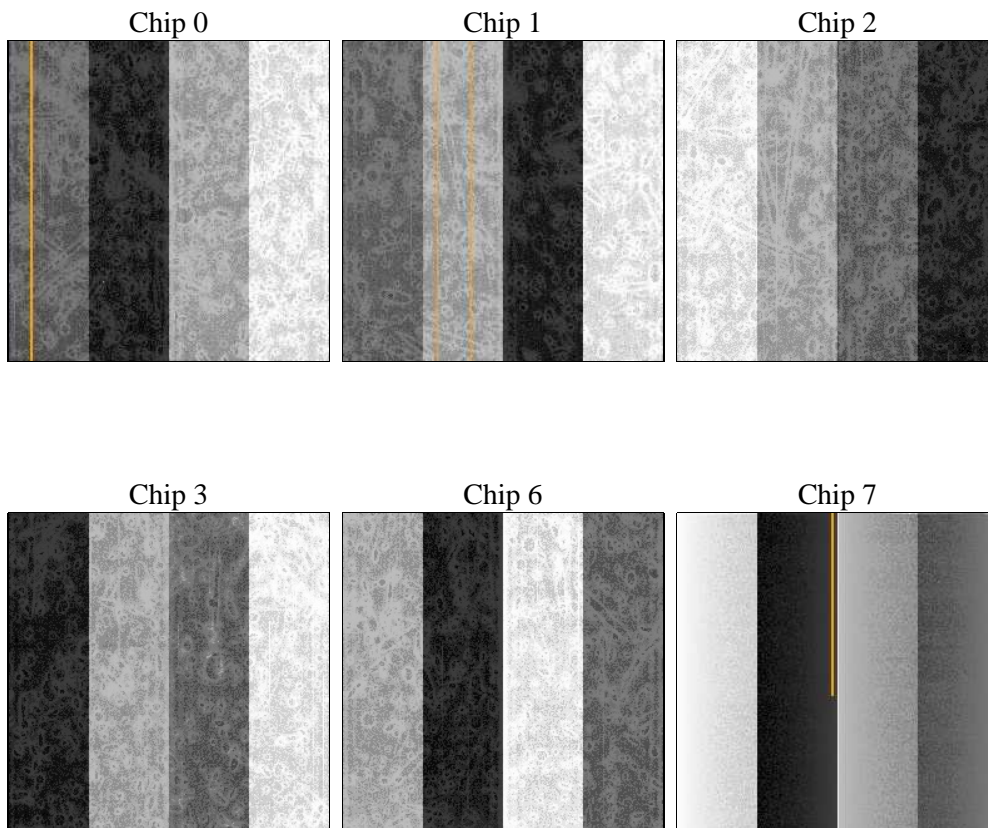
2 OBI

2.1 OBI

2.1.1 Images



2.1.2 Bias



2.1.3 Parameters

obi_num	0	Obi number	sched_exp_time	38190.000000	[s] Scheduled observation exposure time
ascdsver	8.4.5	Processing system revision	ontime	38127.367089748	Sum of GTIs [s]
caldbver	4.5.1.1	 	ontime0	38130.484810293	Sum of GTIs [s]
date	2012-08-29T23:24:19	Date and time of file creation	ontime1	38137.007830605	Sum of GTIs [s]
revision	4	Processing version of data	ontime2	38127.325999901	Sum of GTIs [s]
			ontime3	38127.367089748	Sum of GTIs [s]
			ontime6	38133.931000441	Sum of GTIs [s]
			ontime7	38137.1309506	Sum of GTIs [s]
			l1events	1540426	Number of level 1 events

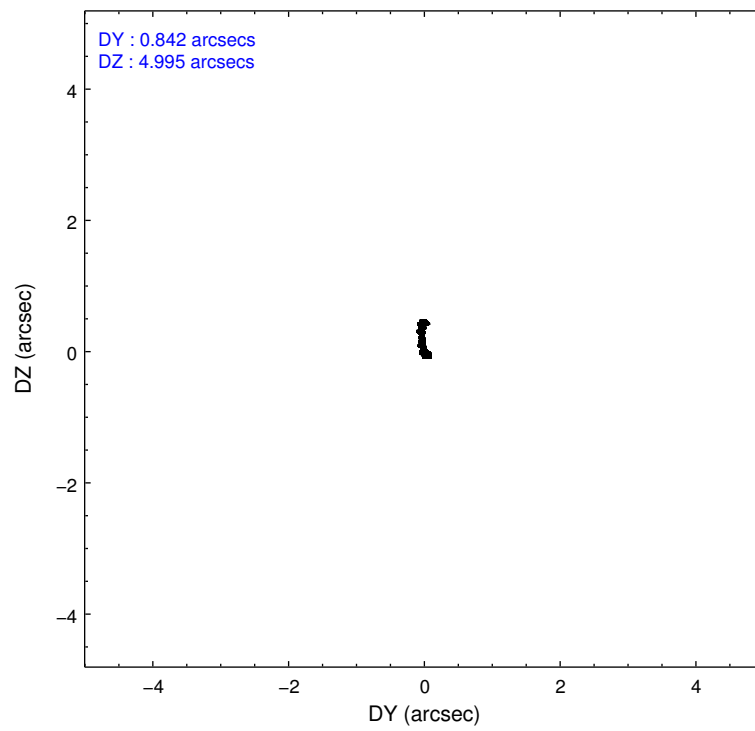
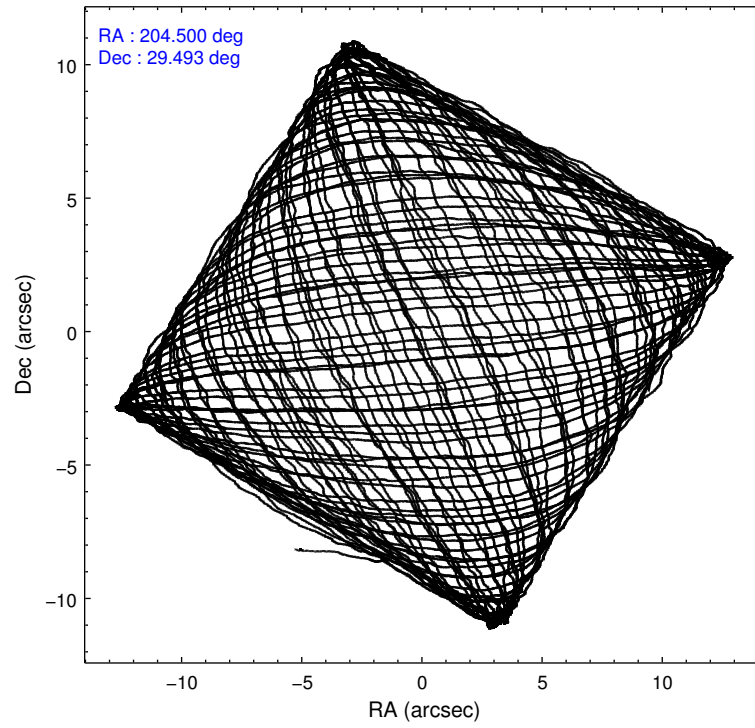
2.1.4 Events

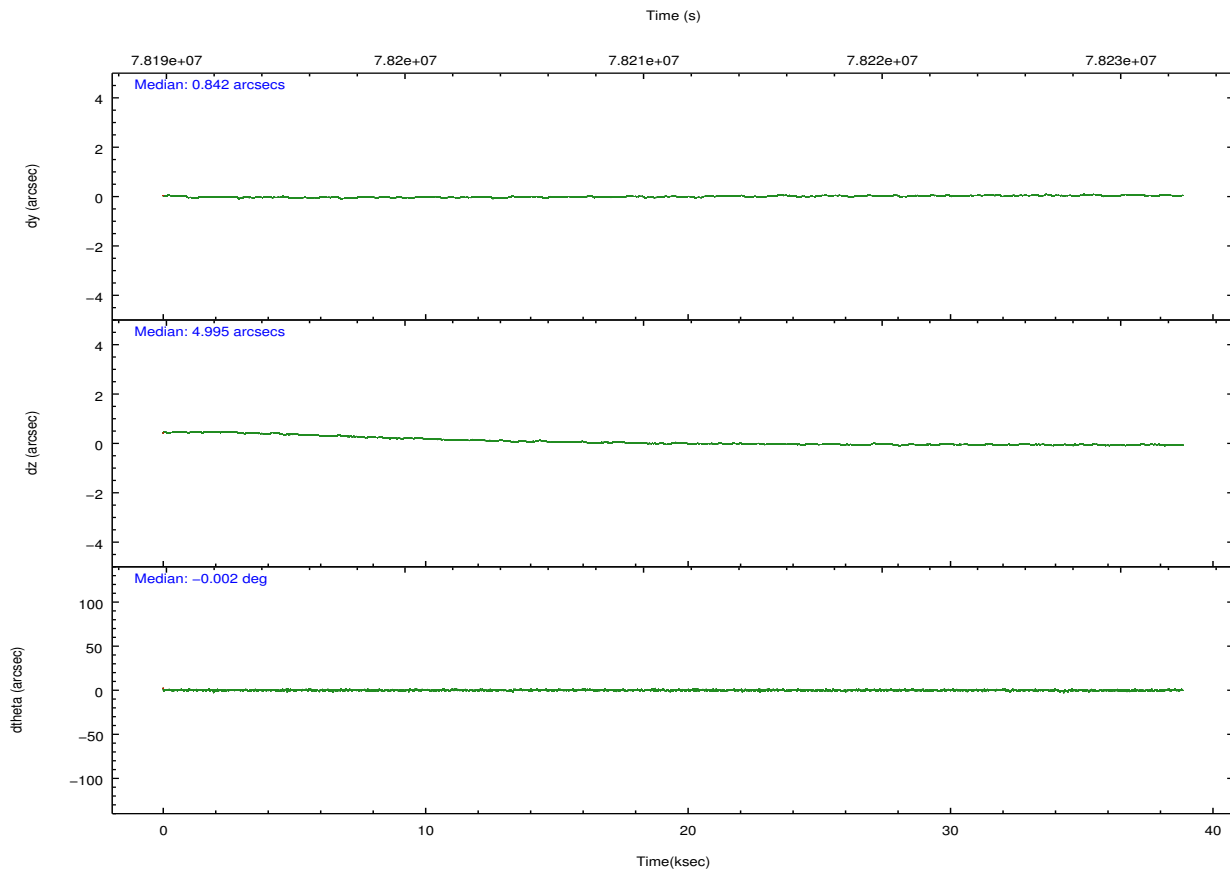
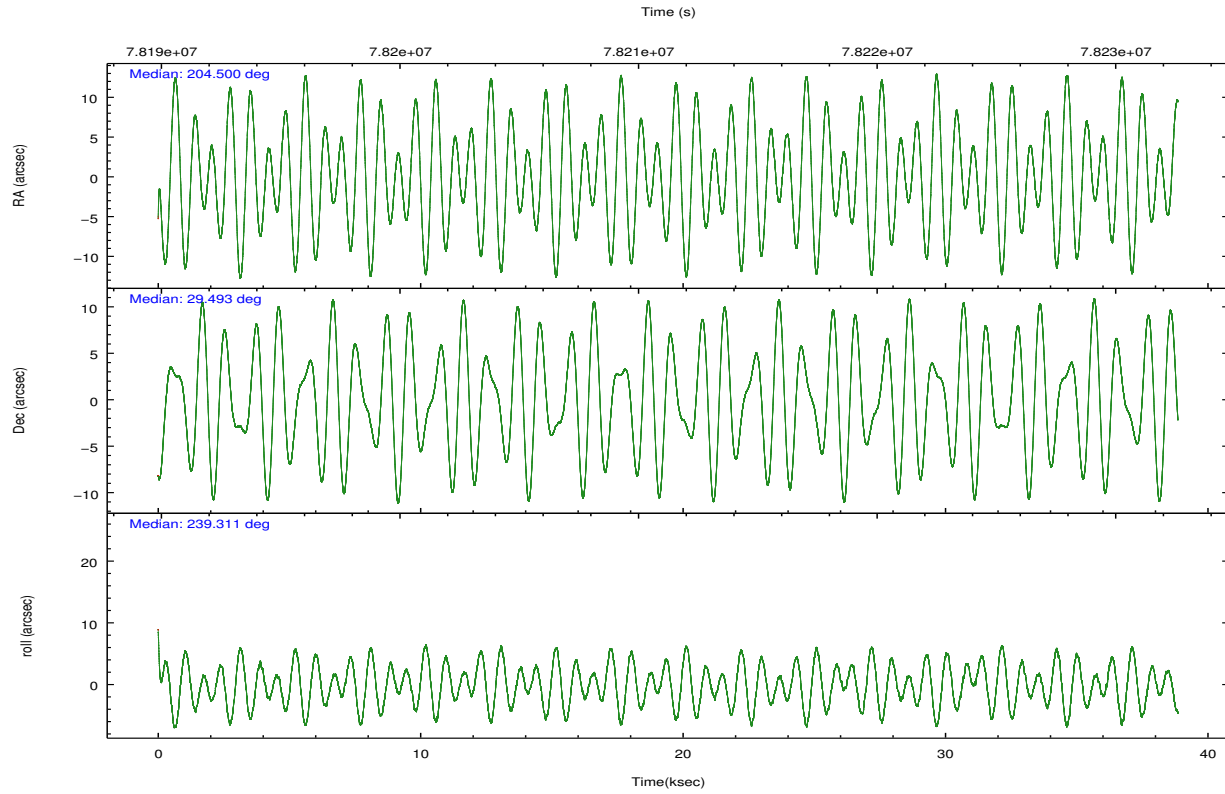
	ccd 0	ccd 1	ccd 2	ccd 3	ccd 6	ccd 7		ccd 0	ccd 1	ccd 2	ccd 3	ccd 6	ccd 7
level 1 events	234787	235573	255680	256119	259880	298387	grade 0 events	14850	15934	13779	14577	14711	13119
rejected events	201413	199700	224675	223656	226617	167558		6%	6%	5%	5%	5%	4%
rejected %	85%	84%	87%	87%	87%	56%	grade 1 events	110	117	128	115	124	306
								0%	0%	0%	0%	0%	0%
							grade 2 events	7285	7555	6655	7013	6986	25404
								3%	3%	2%	2%	2%	8%
							grade 3 events	2928	3202	2621	2642	2906	12059
								1%	1%	1%	1%	1%	4%
							grade 4 events	2726	3080	2724	2738	2796	11890
								1%	1%	1%	1%	1%	3%
							grade 5 events	8143	8525	7711	8400	9603	27914
								3%	3%	3%	3%	3%	9%
							grade 6 events	5595	6106	5232	5495	5875	68376
								2%	2%	2%	2%	2%	22%
							grade 7 events	193150	191054	216830	215139	216879	139319
								82%	81%	84%	83%	83%	46%

2.2 Compared Parameters

Parameter	Planned	Actual	Parameter	Planned	Actual
Instrument	ACIS	ACIS	Obspar format version number	7	7
Detector	ACIS-012367	ACIS-012367	Obspar file type	PREDICTED	ACTUAL
Grating	NONE	NONE	Obspar update status	NONE	UPDATED
Data mode	VFAINT	VFAINT	Number of optional ACIS chips dropped	0	0
Observation mode	POINTING	POINTING	On-chip summing requested	N	N
[deg] Pointing RA	204.500670	204.5001189534332	Subarray requested	NONE	NONE
[deg] Pointing Dec	29.521062	29.49350335509566	Alternating exposures requested	N	N
[deg] Pointing Roll	239.108751	239.3177064380286	[s] Primary exposure time	0.000000	3.2
[mm] SIM focus pos	-0.782348	-0.7809083437167272			
[mm] SIM defocus	0	0.001439871863259334			
[mm] SIM translation stage pos	-233.592463	-233.5899487761303			
[mm] SIM translation stage offset	0	-0.002504226799430853			
[s] Observation start time (MET)	78192473.184000	78191274.85492399			
Observation start date	2000-06-24T00:06:49	2000-06-23T23:47:54			
[s] Observation end time (MET)	78230663.184000	78230999.243889			
Observation end date	2000-06-24T10:43:19	2000-06-24T10:49:59			
Read mode	TIMED	TIMED			

2.3 Aspect



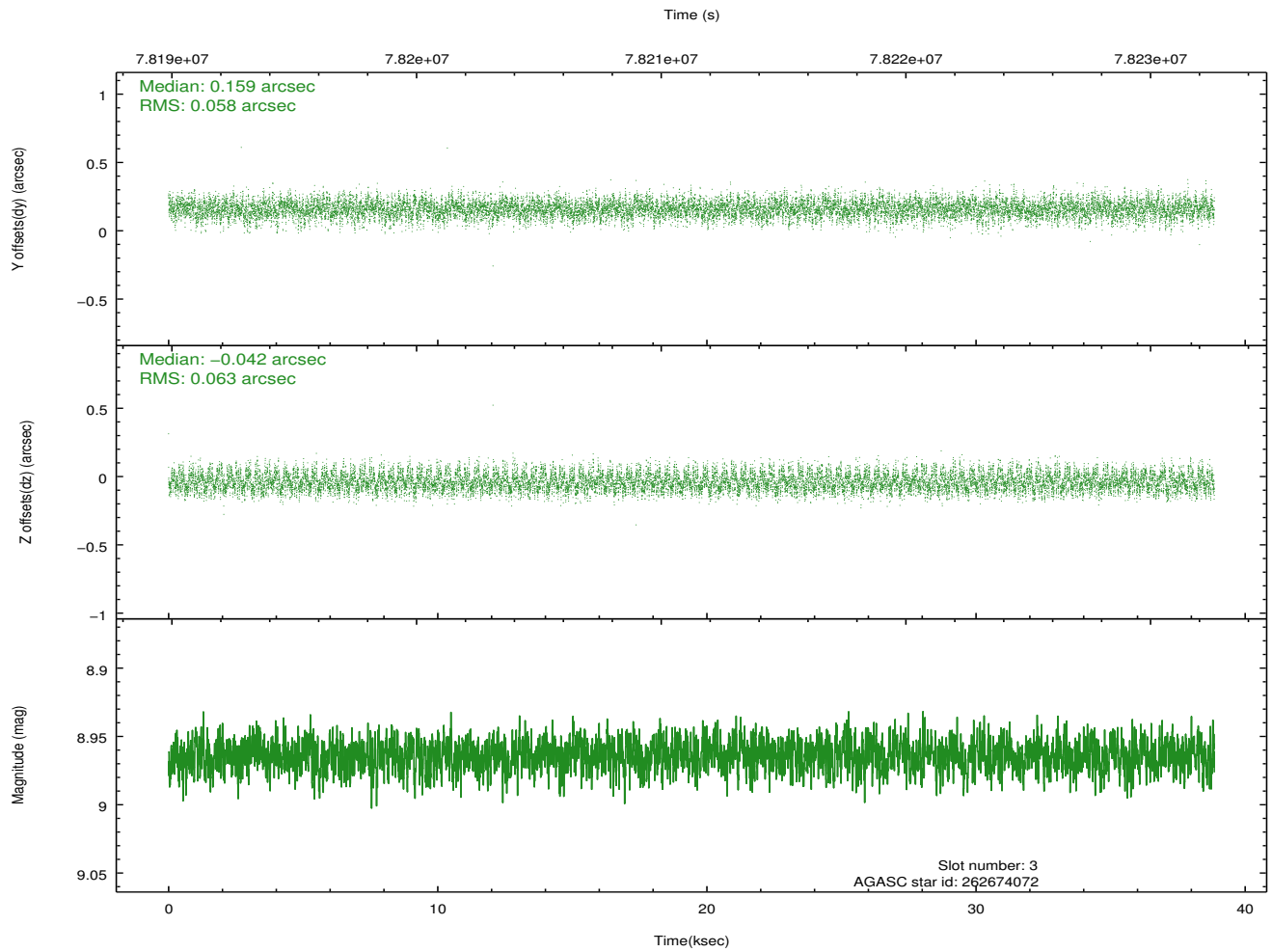
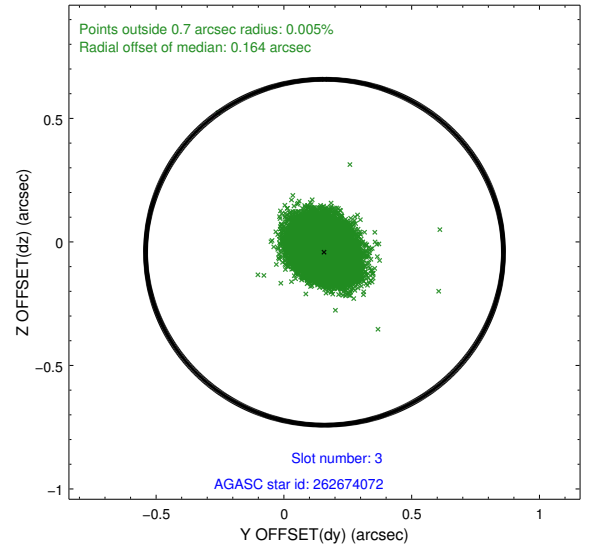
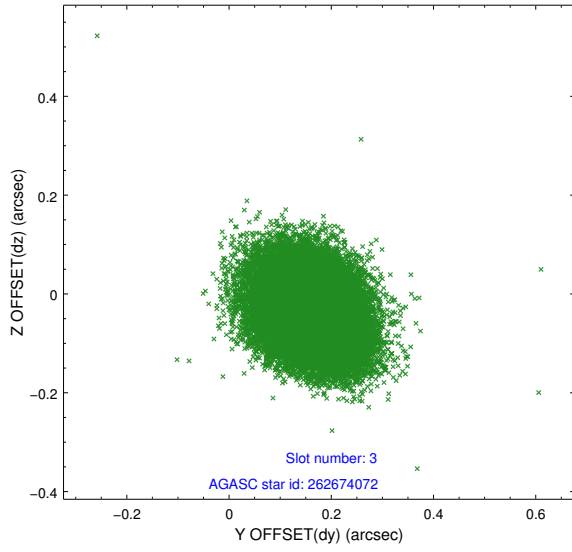


Slot Statistics

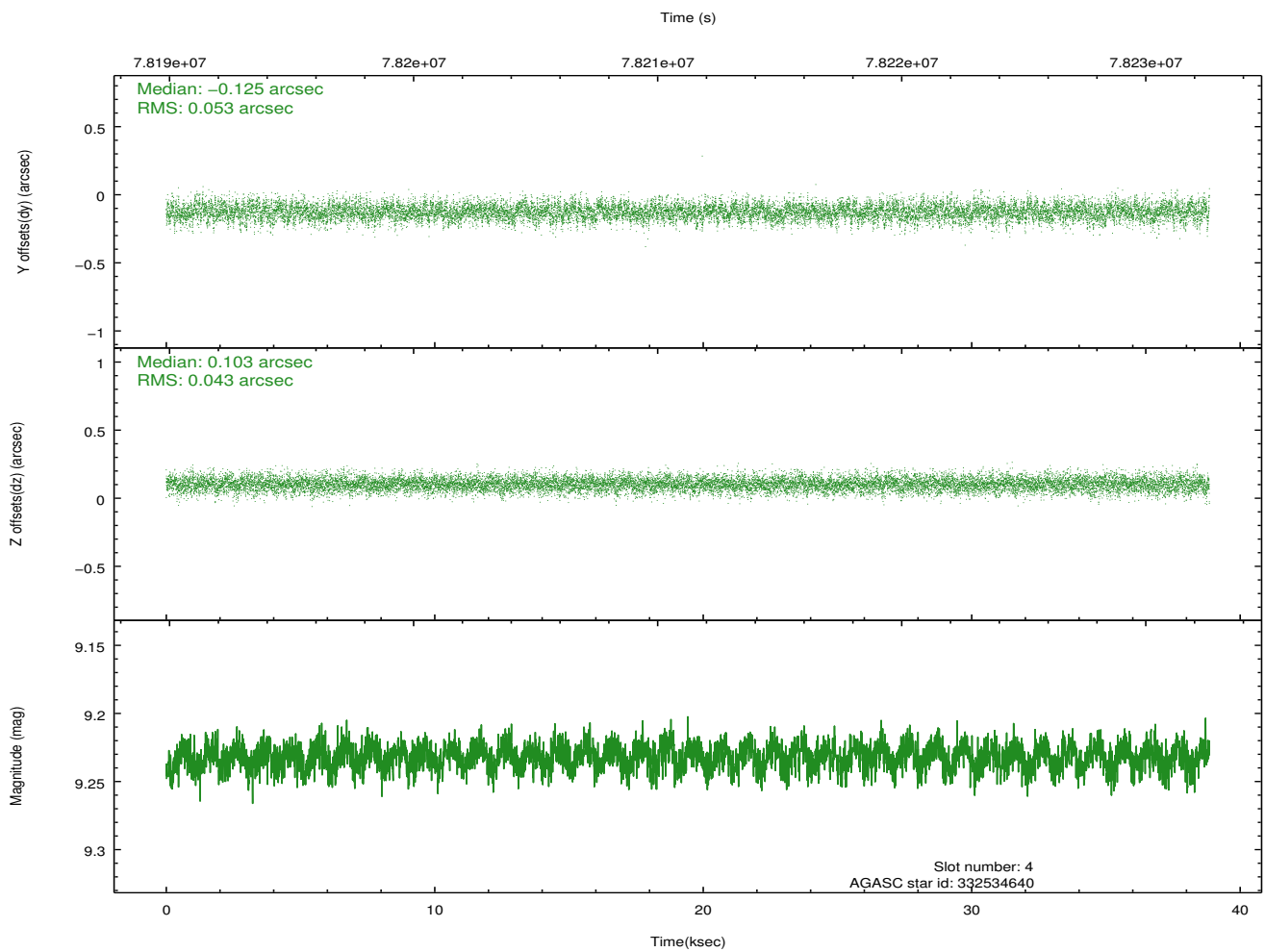
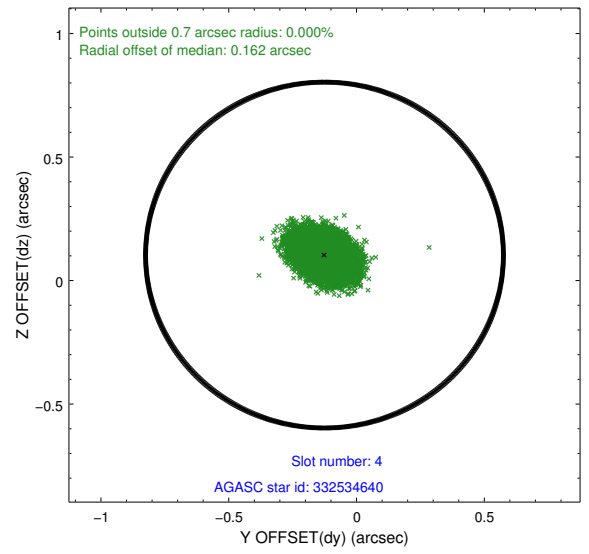
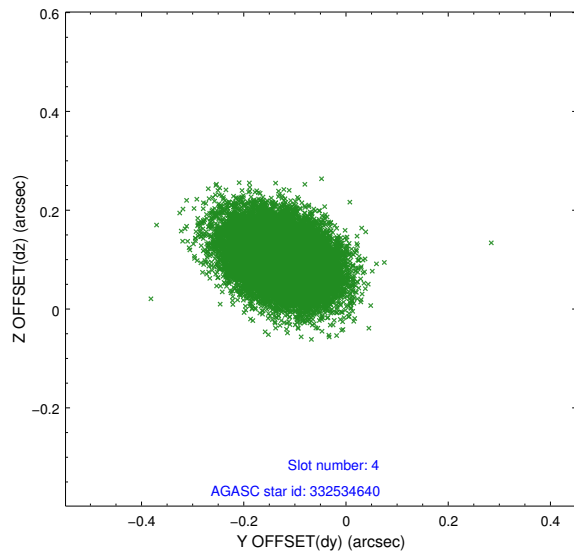
slot	status	id	mag	n_pts	med_dy	med_dz	dr1	dr2	ra	dec	mean_y	mean_z
0	FID	ACIS-I-2	7.15	9475	-0.029	-0.029	0.009	0.016	0.000000	0.000000	-755.19	-834.77
1	FID	ACIS-I-4	7.19	9474	-0.038	0.033	0.006	0.011	0.000000	0.000000	2158.85	1071.46
2	FID	ACIS-I-5	7.23	9476	-0.034	0.065	0.009	0.015	0.000000	0.000000	-1809.00	1069.37
3	GUIDE	262674072	8.96	18945	0.159	-0.042	0.091	0.144	203.817723	29.134613	2290.84	-1130.93
4	GUIDE	332534640	9.23	18942	-0.125	0.103	0.072	0.120	204.798572	30.031451	-2054.97	-146.62
5	GUIDE	262671000	9.99	18929	0.078	-0.124	0.108	0.181	203.991182	29.621604	504.64	-1555.21
6	GUIDE	262676648	8.48	18950	0.004	-0.021	0.094	0.149	205.067150	29.027569	604.61	2440.85
7	GUIDE	262673904	9.66	18944	-0.115	0.078	0.106	0.176	205.387915	29.658787	-1860.48	2122.65

2.4 Star Slots

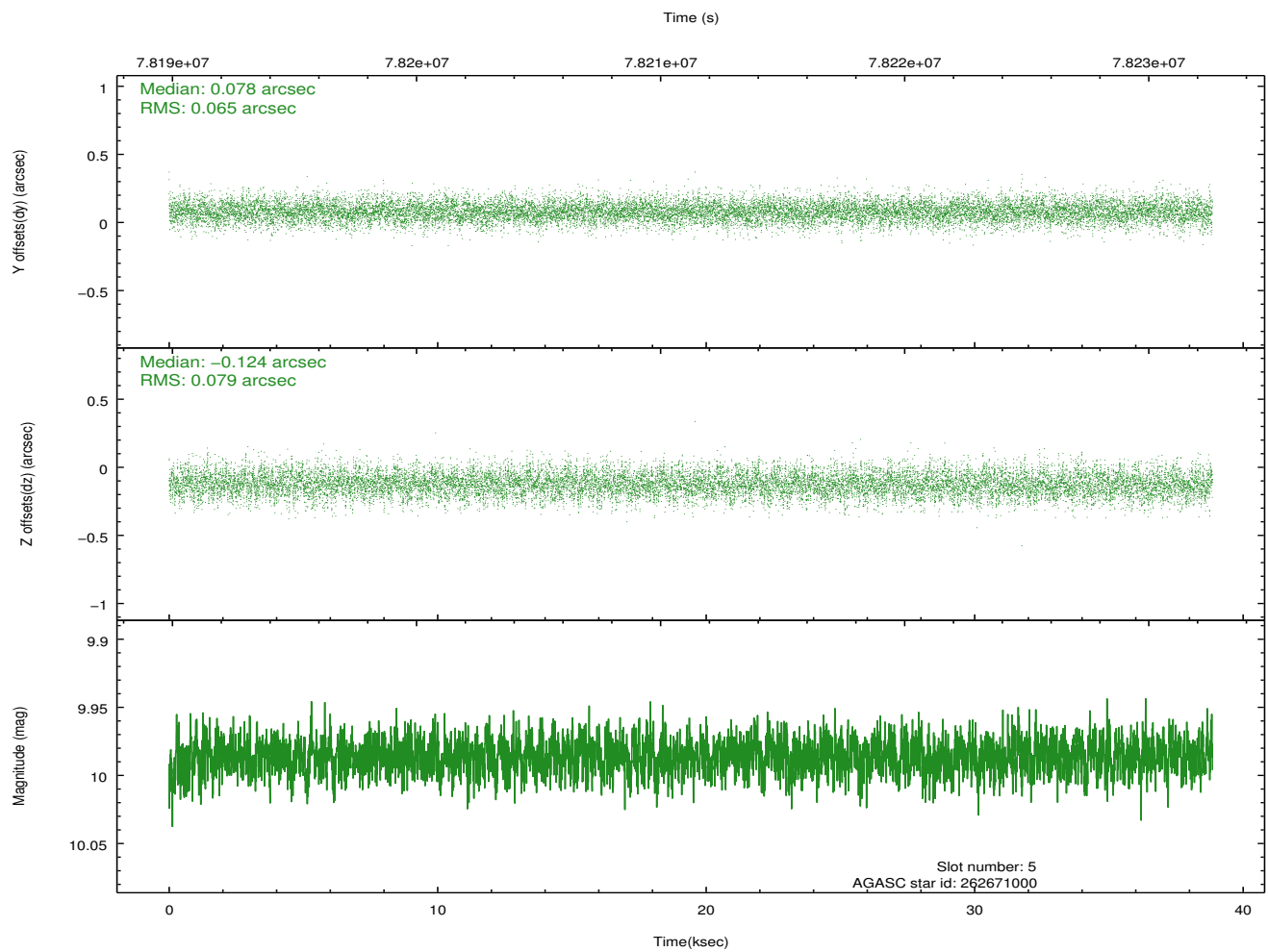
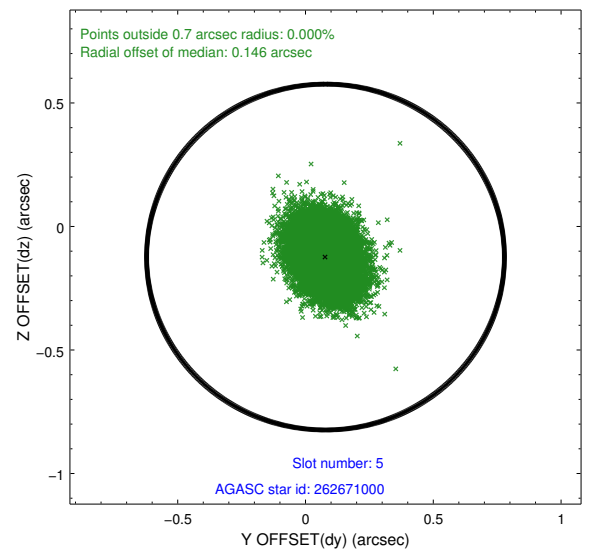
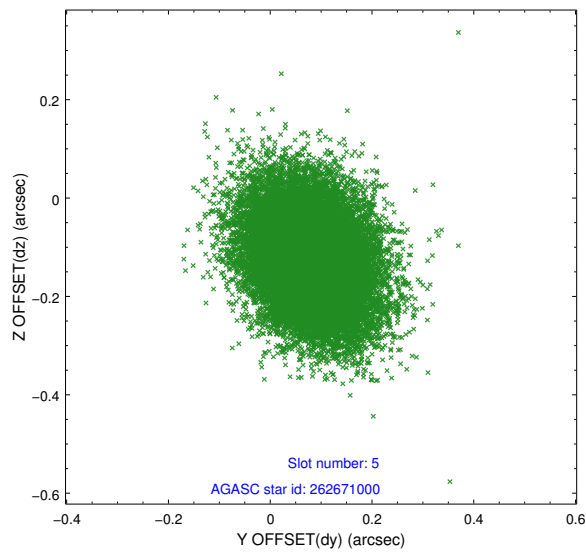
2.4.1 Slot 3



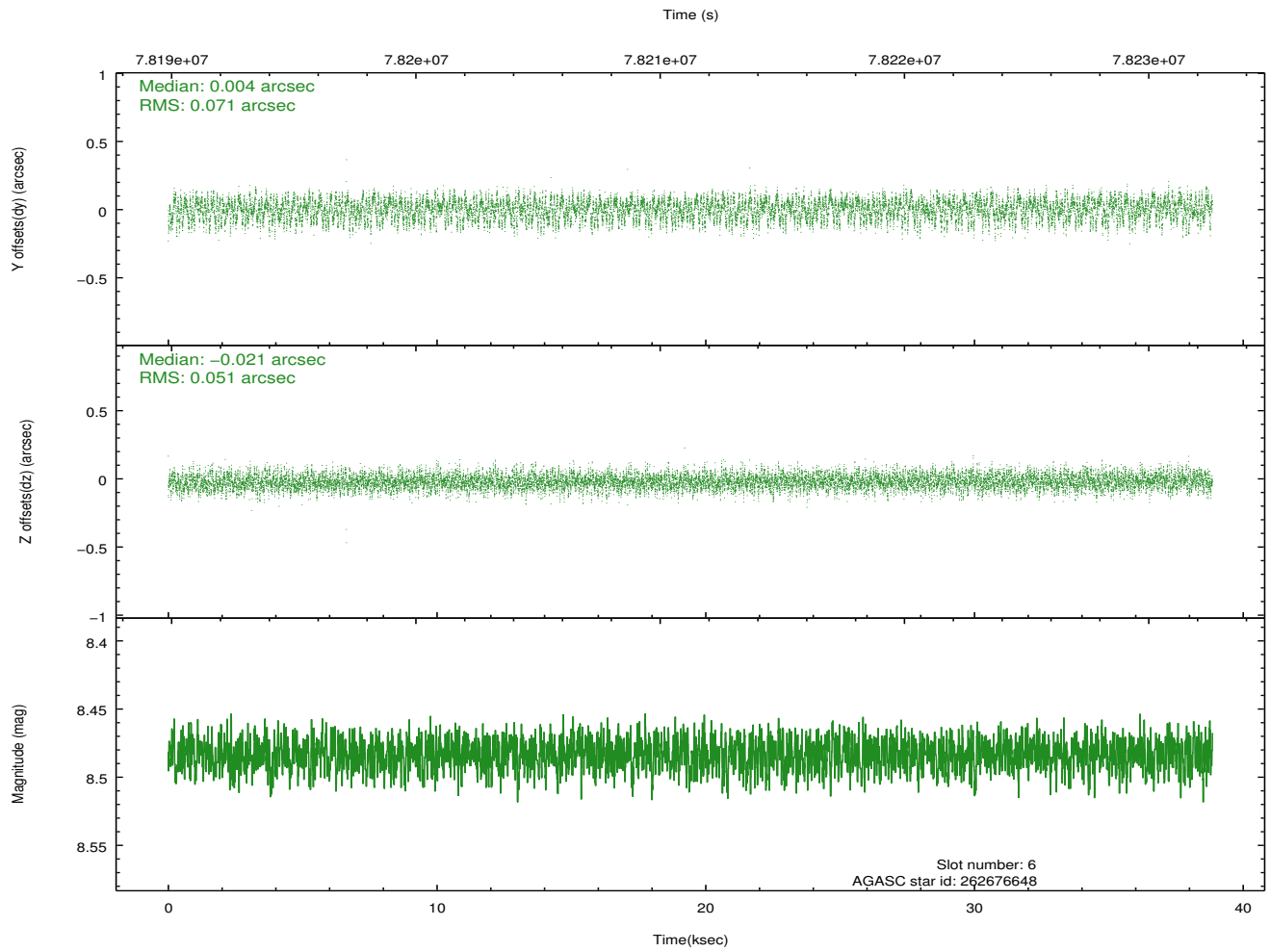
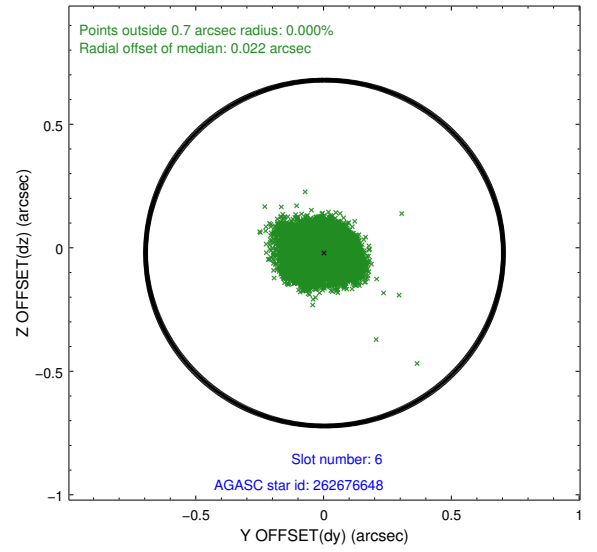
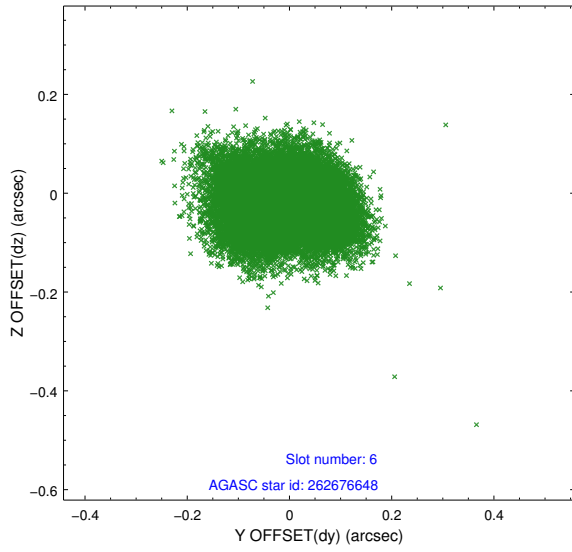
2.4.2 Slot 4



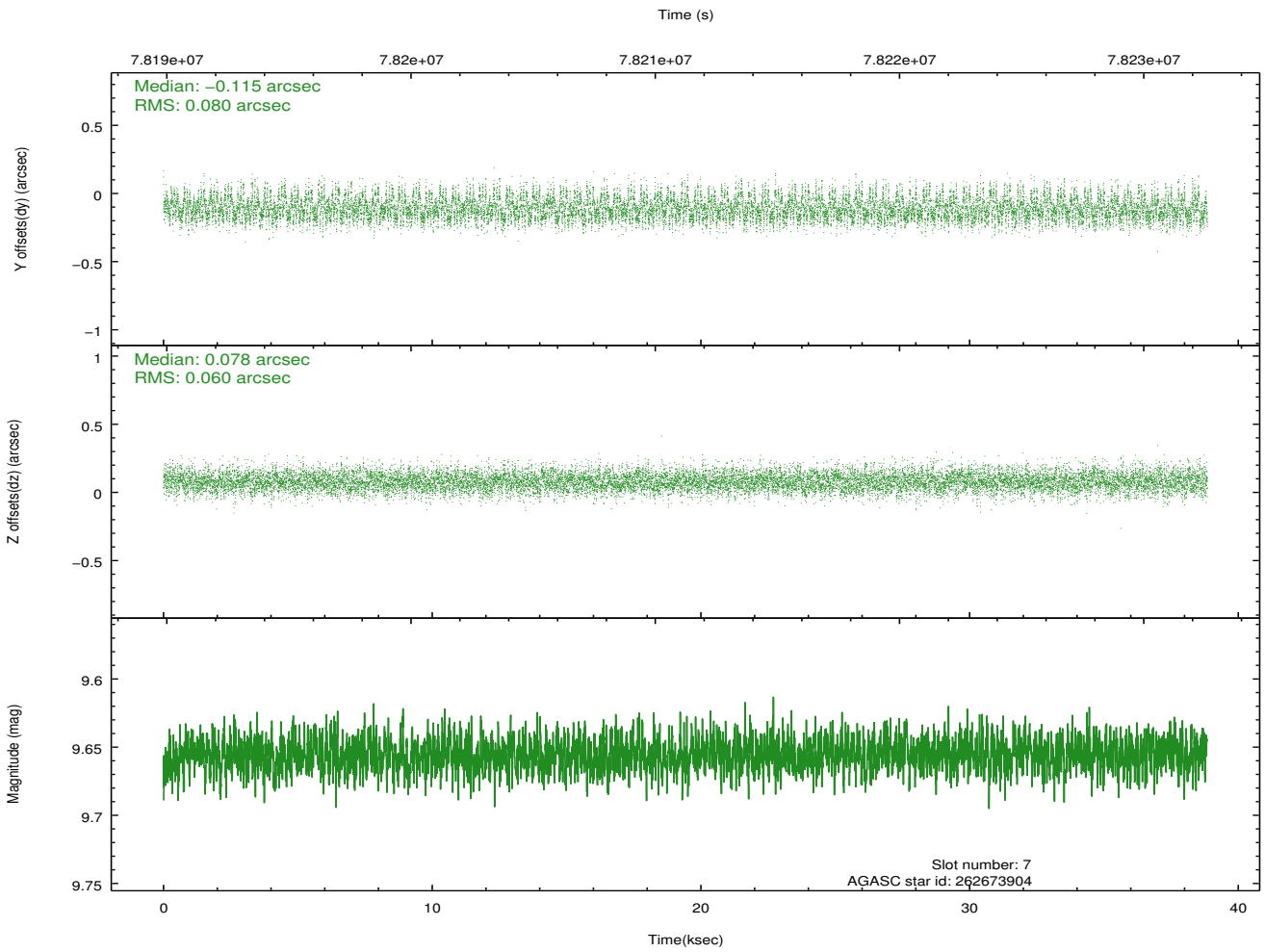
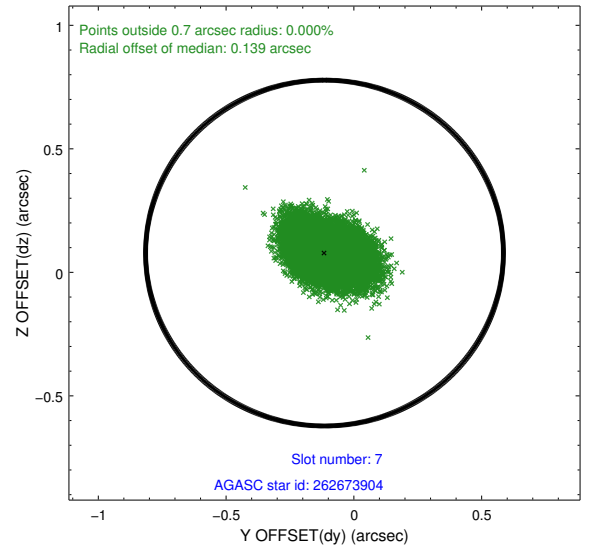
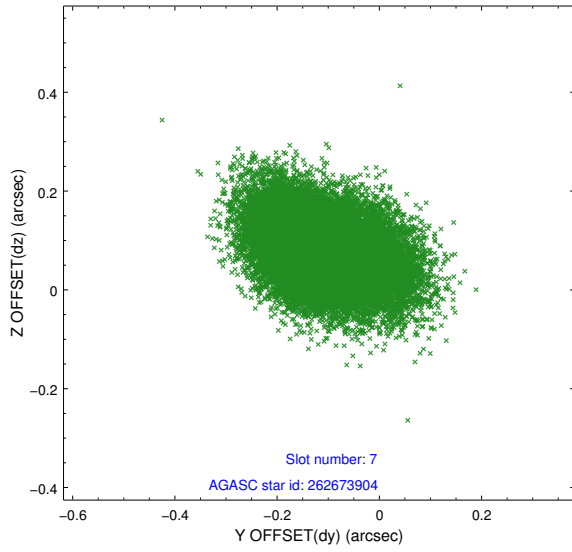
2.4.3 Slot 5



2.4.4 Slot 6

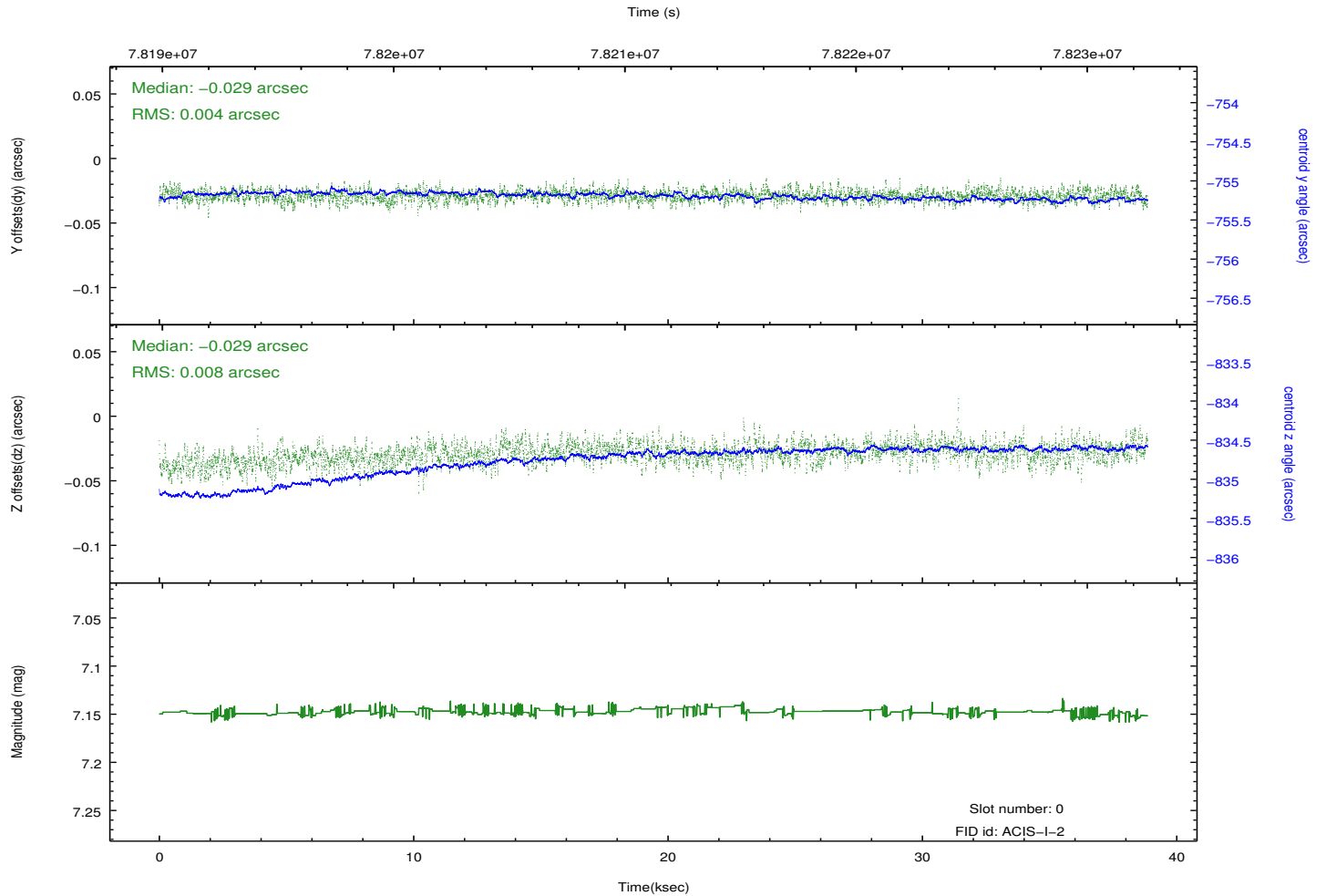
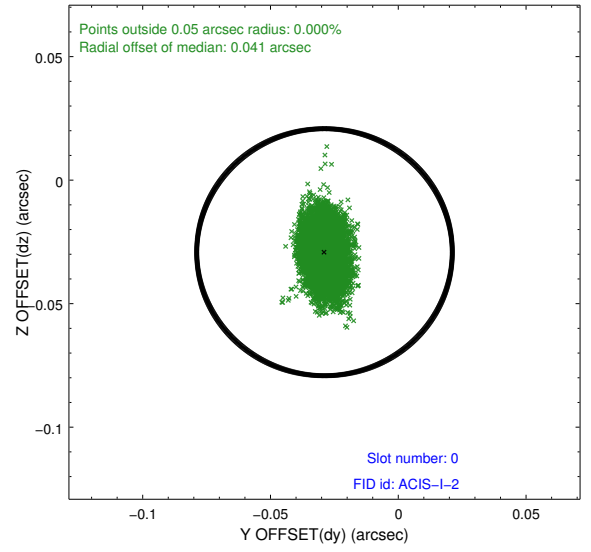
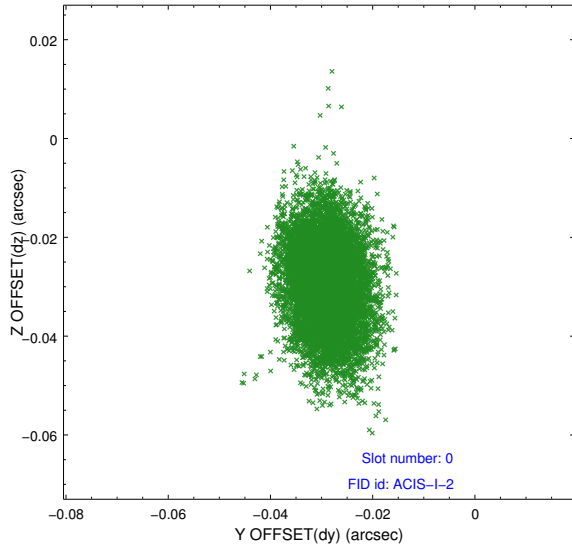


2.4.5 Slot 7

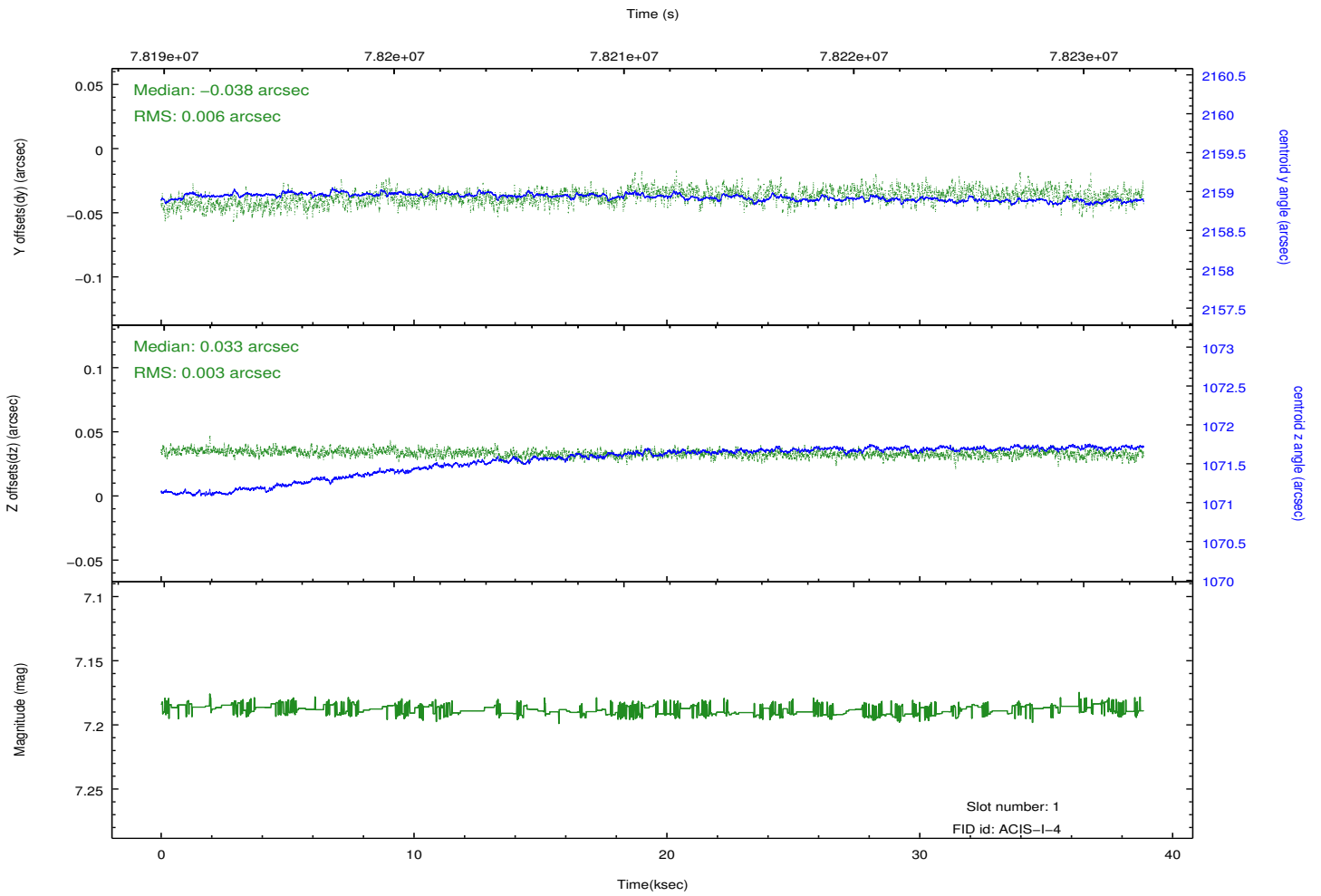
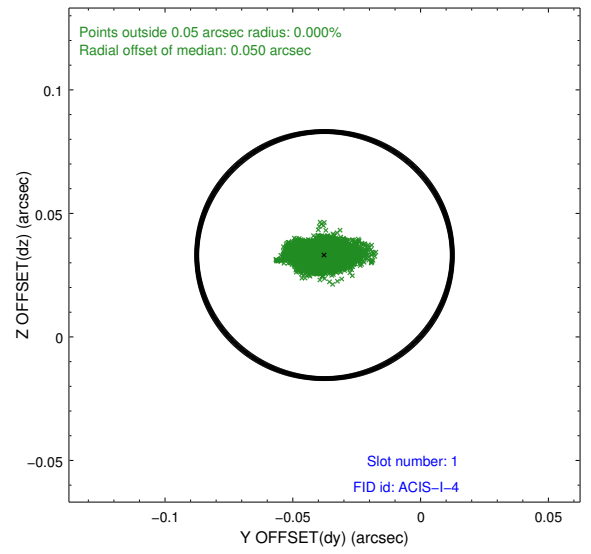
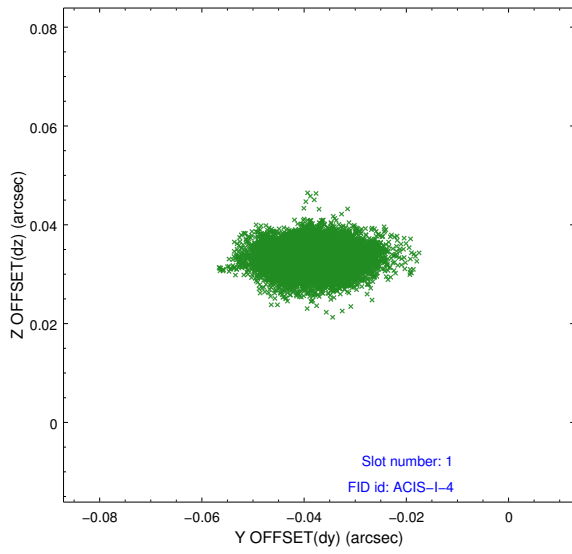


2.5 FID Slots

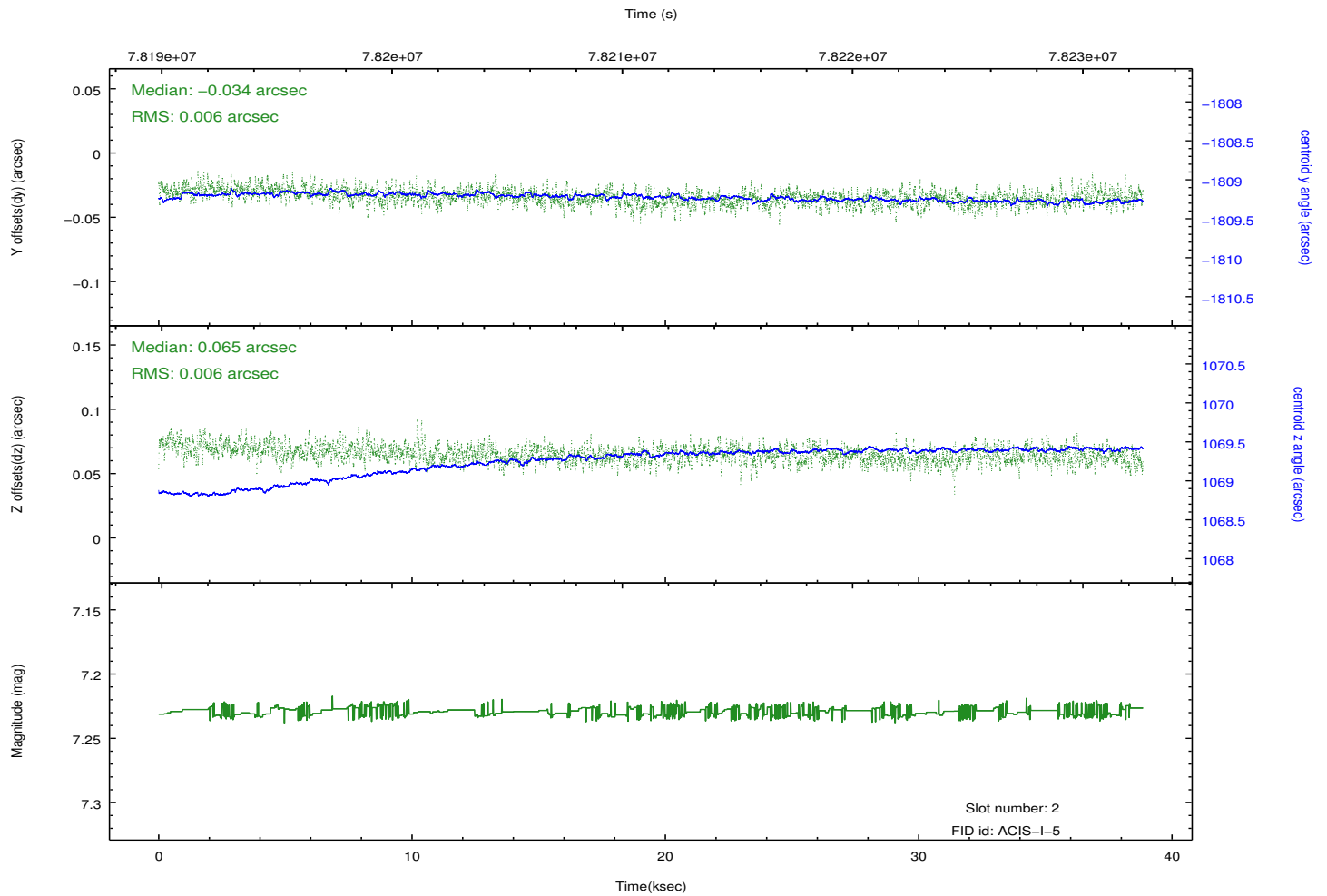
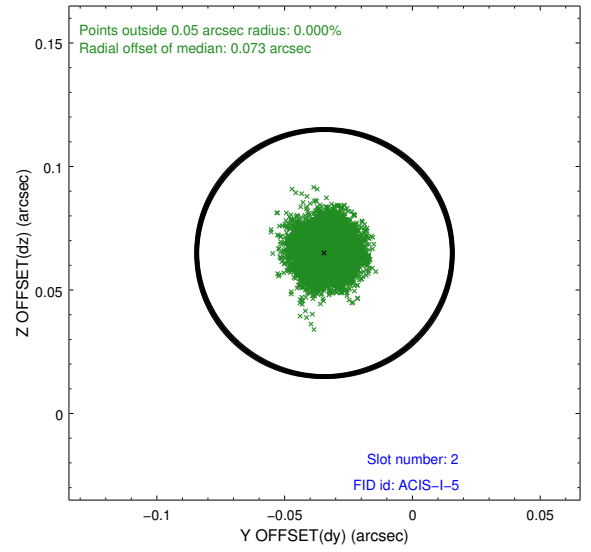
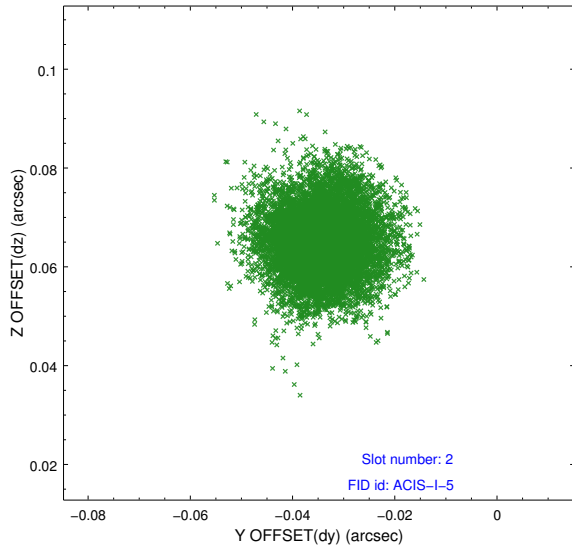
2.5.1 Slot 0



2.5.2 Slot 1



2.5.3 Slot 2



A Summary

A.1 Status

V&V Scientist	Jen Lauer
V&V Date (YYYY-MM-DD)	2012.09.04
V&V Edition	1
V&V Disposition and Status	OK
V&V Charge Time	38.134

A.2 Comments