

V&V Reference Report

L2 ASCDS Version : 8.4.5

Observation 9260 - L2 Version 2
Chandra X-Ray Center

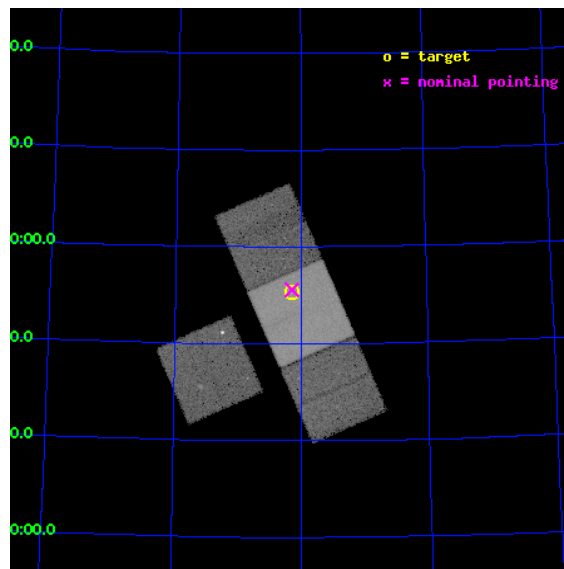
L2 Processing Date : Jun 7 2012

Contents

1	Front	2
2	OBI	3
2.1	OBI	3
2.1.1	Images	3
2.1.2	Bias	3
2.1.3	Parameters	4
2.1.4	Events	4
2.2	Compared Parameters	5
2.3	Aspect	6
2.4	Star Slots	9
2.4.1	Slot 3	9
2.4.2	Slot 4	10
2.4.3	Slot 5	11
2.4.4	Slot 6	12
2.4.5	Slot 7	13
2.5	FID Slots	14
2.5.1	Slot 0	14
2.5.2	Slot 1	15
2.5.3	Slot 2	16
A	Summary	17
A.1	Status	17
A.2	Comments	17

1 Front

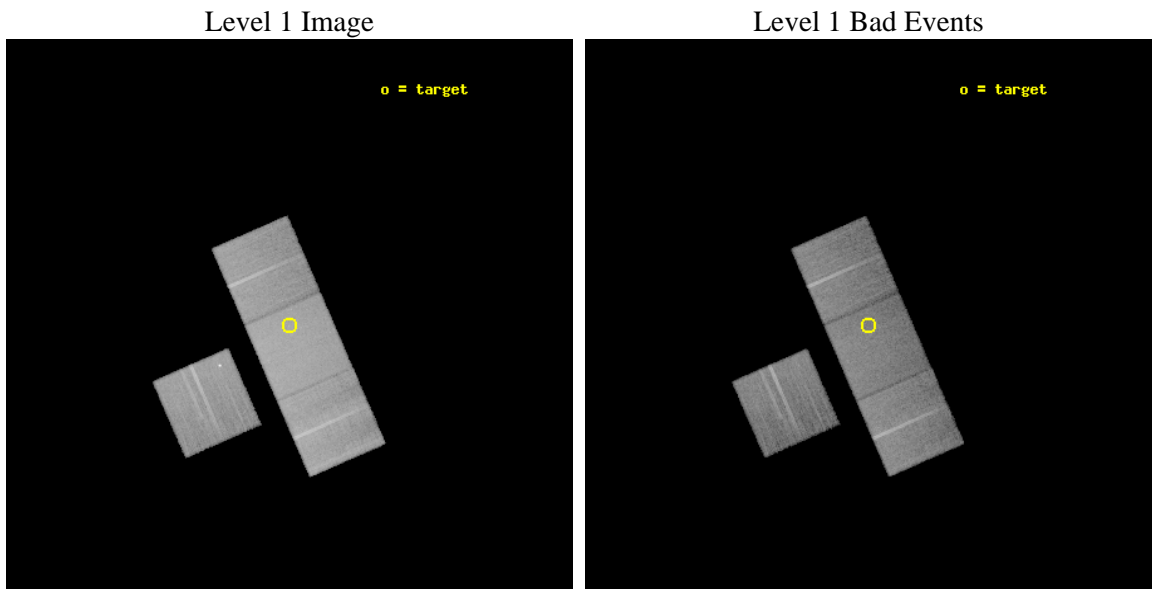
seq_num	701701	Sequence number
obs_id	9260	Observation id
title	Orientation effects in the X-ray and multi-wavelength properties of high-z, 3CRR quasars.	Proposal title
observer	Dr. Belinda Wilkes	Principal investigator
object	3CRR 469.1	Source name
dtcycle	0	
cycle	P	events from which exps? Prim/Second/Both
ra_targ	358.845833	Observer's specified target RA [deg]
dec_targ	79.921556	Observer's specified target Dec [deg]
ra_nom	358.84186436131	Nominal RA [deg]
dec_nom	79.926345773822	Nominal Dec [deg]
roll_nom	66.446766919294	Nominal Roll [deg]
revision	2	Processing version of data
ontime	20177.900155187	Sum of GTIs [s]
livetime	19914.261034905	Livetime [s]
ontime3	20174.75916481	Sum of GTIs [s]
ontime6	20177.900155187	Sum of GTIs [s]
ontime7	20177.900155187	Sum of GTIs [s]
ontime8	20177.900155187	Sum of GTIs [s]
l2events	195500	Number of level 2 events



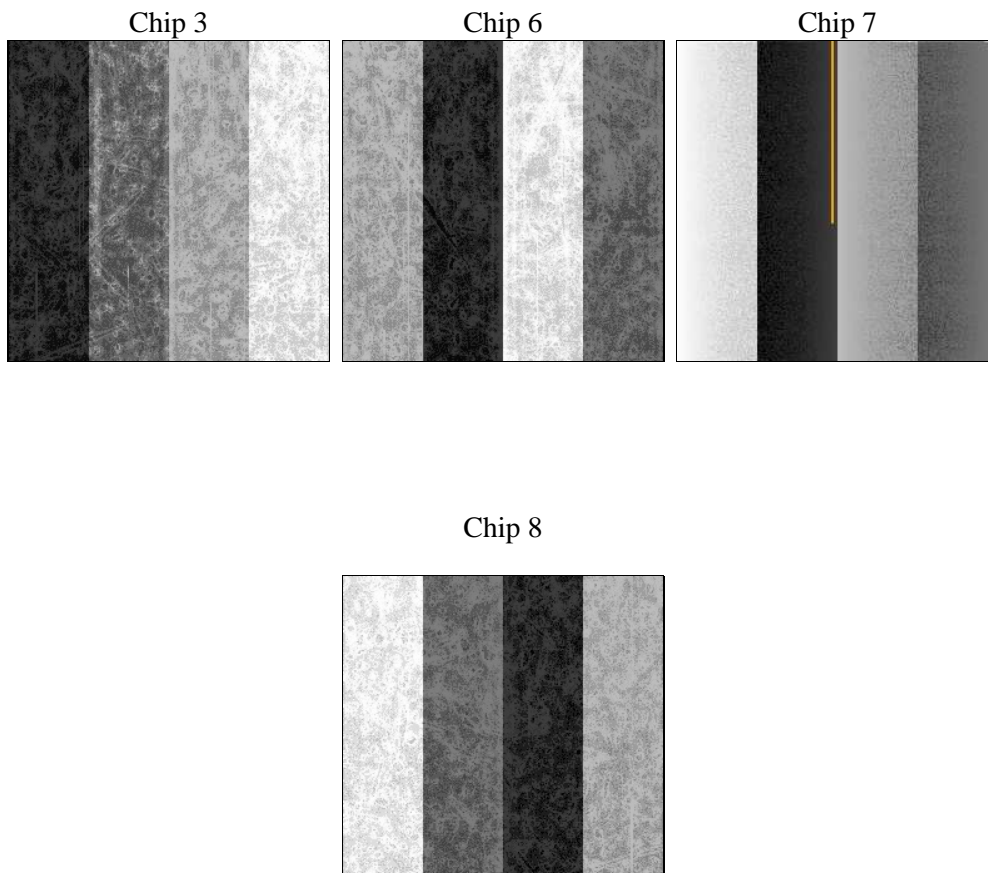
2 OBI

2.1 OBI

2.1.1 Images



2.1.2 Bias



2.1.3 Parameters

obi_num	0	Obi number	sched_exp_time	20000.000000	[s] Scheduled observation exposure time
ascdsver	8.4.5	Processing system revision	ontime	20177.900155187	Sum of GTIs [s]
caldbver	4.4.10	 	ontime3	20174.75916481	Sum of GTIs [s]
date	2012-06-07T17:05:34	Date and time of file creation	ontime6	20177.900155187	Sum of GTIs [s]
revision	2	Processing version of data	ontime7	20177.900155187	Sum of GTIs [s]
			ontime8	20177.900155187	Sum of GTIs [s]
			l1events	1001740	Number of level 1 events

2.1.4 Events

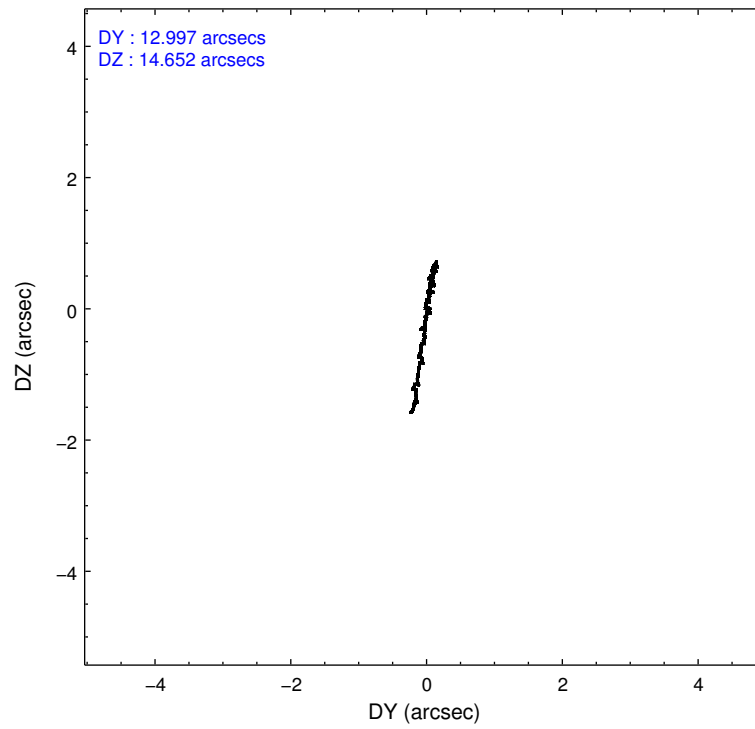
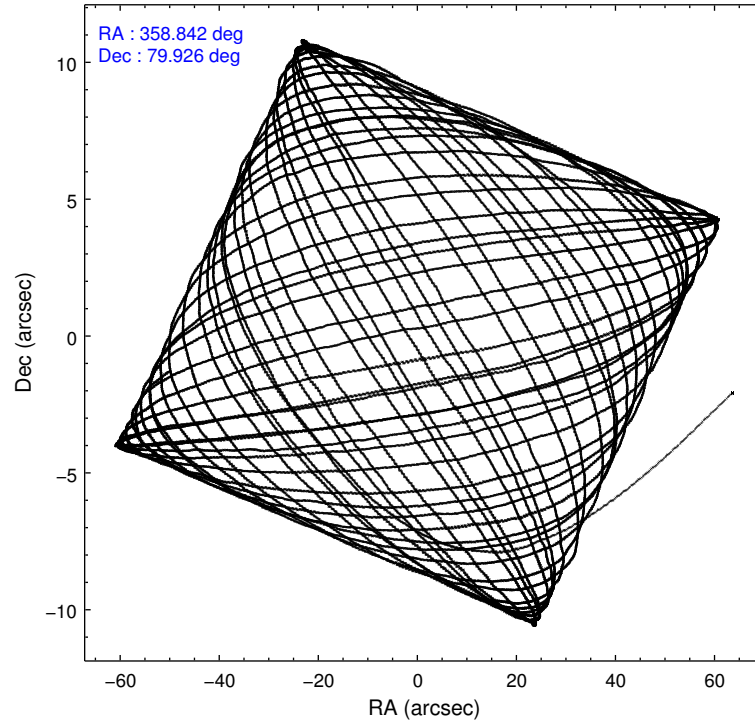
	ccd 3	ccd 6	ccd 7	ccd 8
level 1 events	209799	214852	301202	275887
rejected events	181669	188626	178506	212072
rejected %	86%	87%	59%	76%

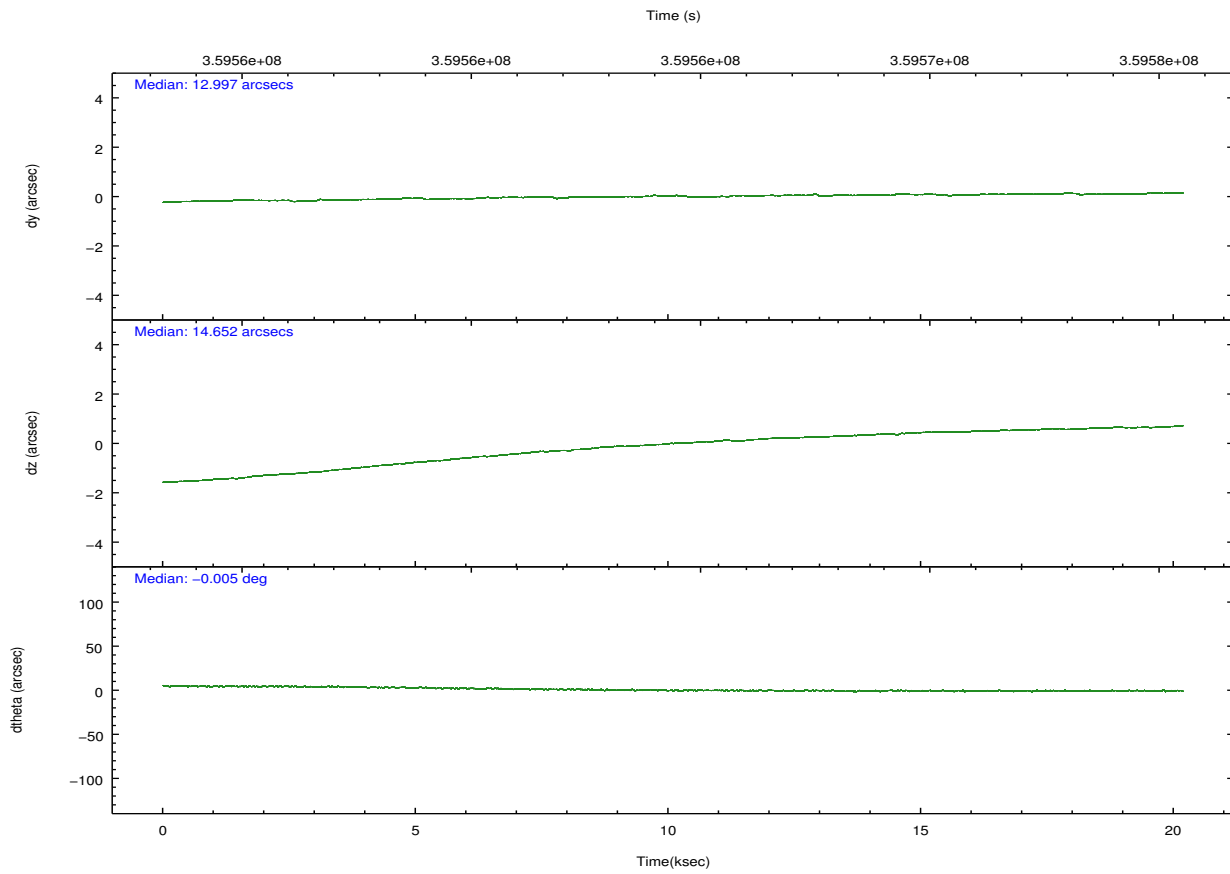
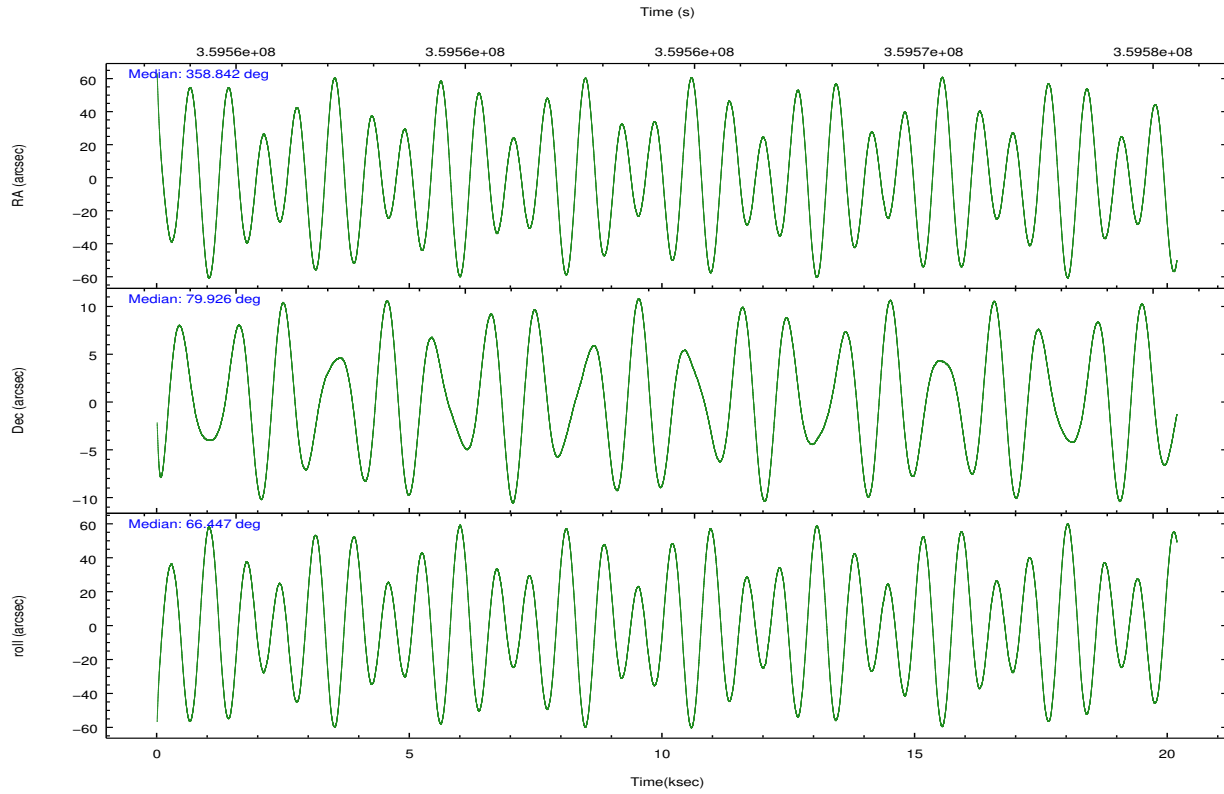
	ccd 3	ccd 6	ccd 7	ccd 8
grade 0 events	13487	10287	10392	20387
	6%	4%	3%	7%
grade 1 events	154	107	302	217
	0%	0%	0%	0%
grade 2 events	5399	5935	25686	14653
	2%	2%	8%	5%
grade 3 events	2537	2473	10422	6829
	1%	1%	3%	2%
grade 4 events	2468	2442	10183	6287
	1%	1%	3%	2%
grade 5 events	10310	10622	28306	14014
	4%	4%	9%	5%
grade 6 events	4674	5472	67877	16665
	2%	2%	22%	6%
grade 7 events	170770	177514	148034	196835
	81%	82%	49%	71%

2.2 Compared Parameters

Parameter	Planned	Actual	Parameter	Planned	Actual
Instrument	ACIS	ACIS	Obspar format version number	7	7
Detector	ACIS-3678	ACIS-3678	Obspar file type	PREDICTED	ACTUAL
Grating	NONE	NONE	Obspar update status	NONE	UPDATED
Data mode	FAINT	FAINT	CCD I0 on	N	N
Observation mode	POINTING	POINTING	CCD I1 on	N	N
[deg] Pointing RA	358.861524	358.8418643613057	CCD I2 on	N	N
[deg] Pointing Dec	79.899236	79.92634577382236	CCD I3 on	O1	Y
[deg] Pointing Roll	66.270787	66.44676691929396	CCD S0 on	N	N
[mm] SIM focus pos	-0.684267	-0.6828225247311905	CCD S1 on	N	N
[mm] SIM defocus	0	0.001444936568705701	CCD S2 on	O3	Y
[mm] SIM translation stage pos	-190.132523	-190.1425803651734	CCD S3 on	Y	Y
[mm] SIM translation stage offset	0	0.01005778216563158	CCD S4 on	O2	Y
[s] Observation start time (MET)	359554497.184000	359553410.42596	CCD S5 on	N	N
Observation start date	2009-05-24T12:13:51	2009-05-24T11:56:50	Number of optional ACIS chips dropped	0	0
[s] Observation end time (MET)	359574497.184000	359575424.86455	On-chip summing requested	N	N
Observation end date	2009-05-24T17:47:11	2009-05-24T18:03:44	Subarray requested	NONE	NONE
Read mode	TIMED	TIMED	Alternating exposures requested	N	N
			[s] Primary exposure time	0.000000	3.1

2.3 Aspect



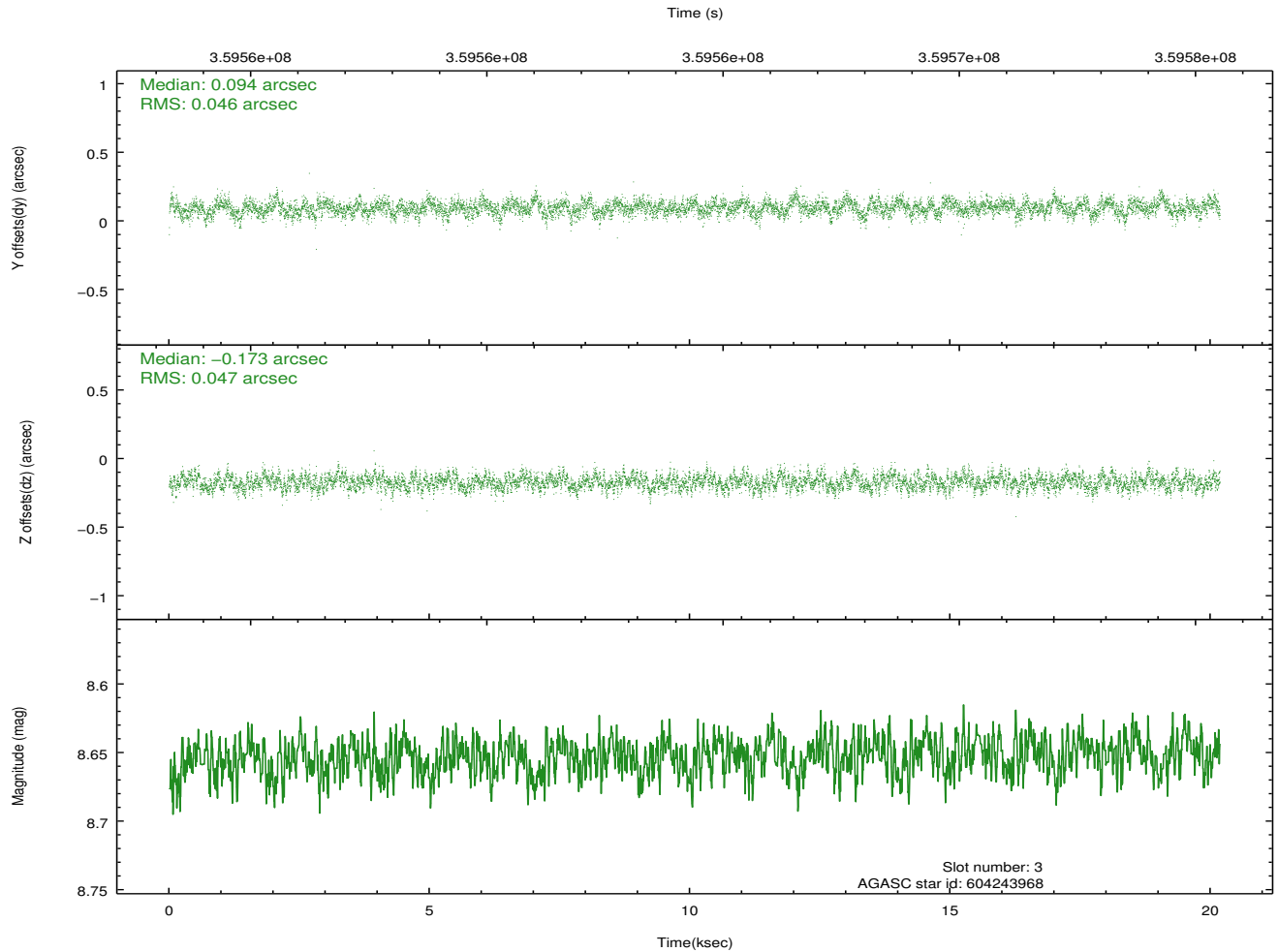
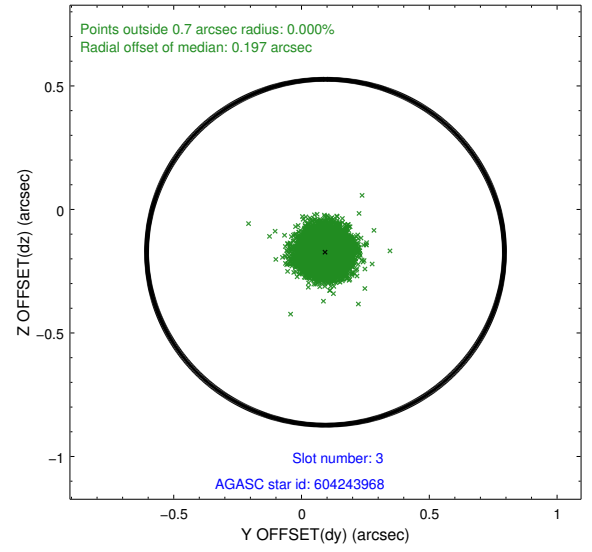
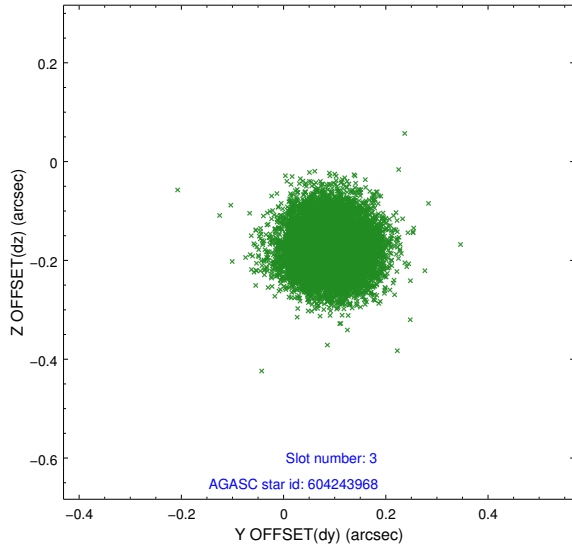


Slot Statistics

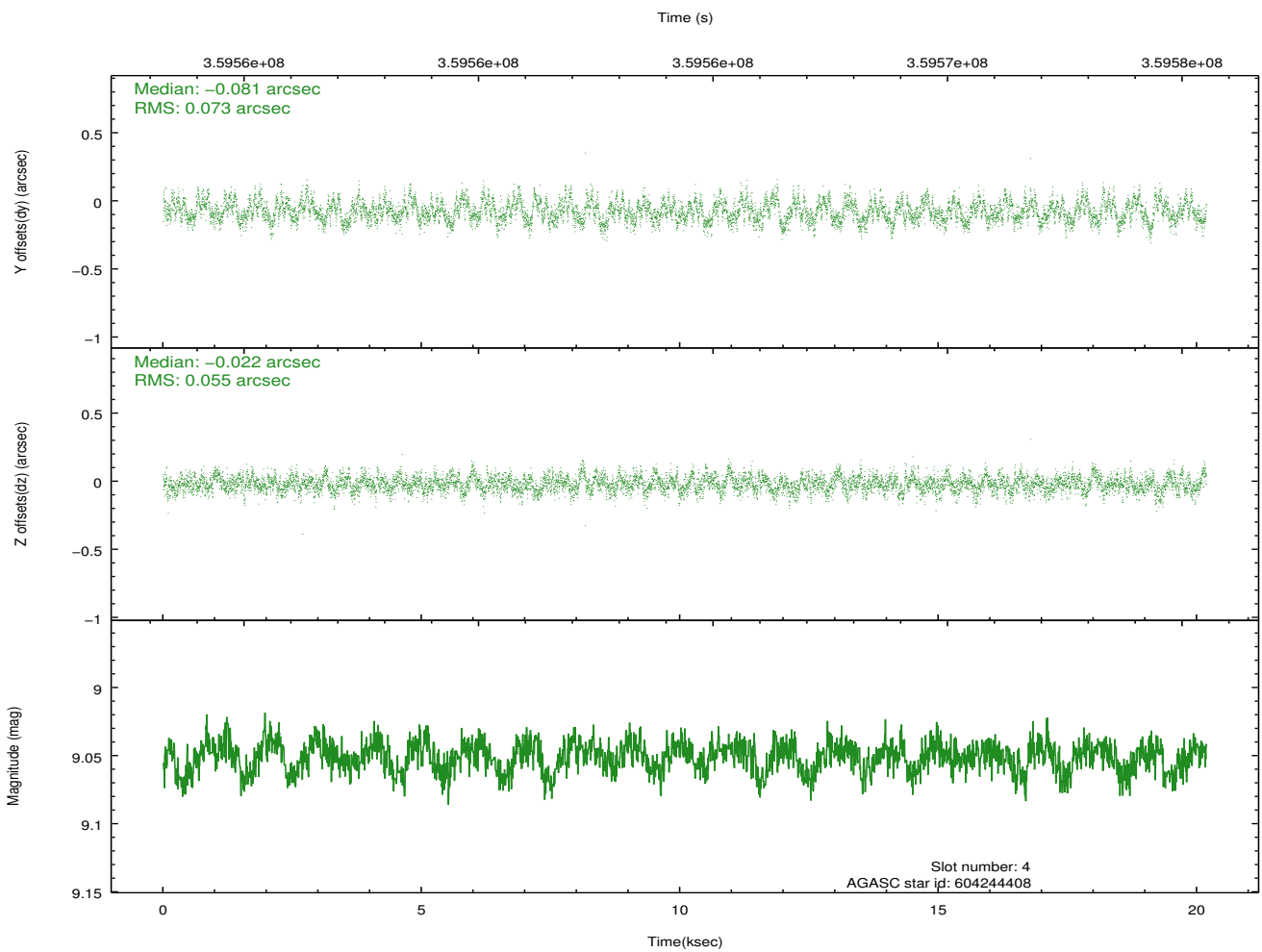
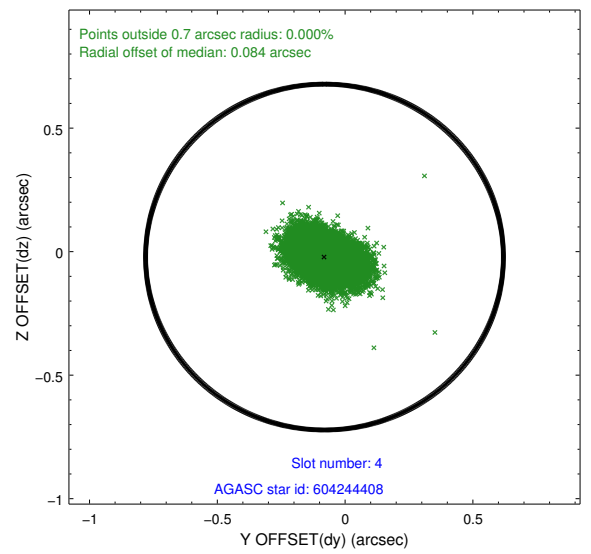
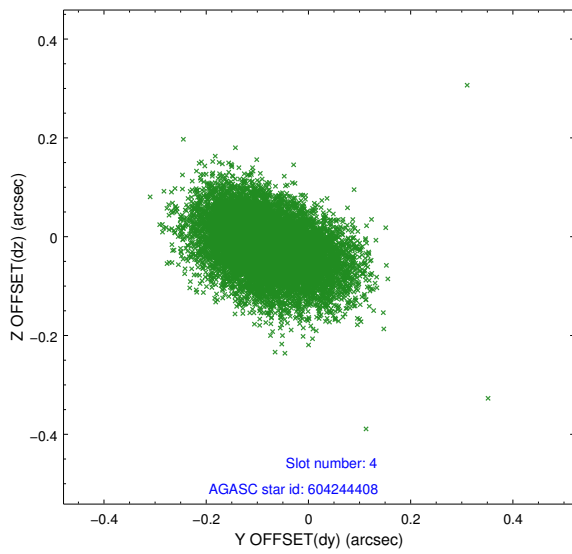
slot	status	id	mag	n_pts	med_dy	med_dz	dr1	dr2	ra	dec	mean_y	mean_z
0	FID	ACIS-S-2	6.95	4923	-0.047	-0.032	0.017	0.035	0.000000	0.000000	-765.92	-1735.81
1	FID	ACIS-S-4	7.03	4922	0.161	0.030	0.017	0.044	0.000000	0.000000	2147.45	172.57
2	FID	ACIS-S-5	7.07	4922	-0.145	0.010	0.014	0.023	0.000000	0.000000	-1818.65	166.39
3	GUIDE	604243968	8.65	9844	0.094	-0.173	0.070	0.111	356.998395	80.564945	1767.83	1977.90
4	GUIDE	604244408	9.05	9839	-0.081	-0.022	0.098	0.160	354.615268	79.542491	-2198.63	2062.08
5	GUIDE	604251720	7.98	9845	0.081	0.172	0.093	0.145	359.259108	79.756930	-366.07	-438.47
6	GUIDE	604255064	9.41	9837	-0.041	-0.022	0.152	0.225	356.627789	79.563004	-1668.67	857.49
7	GUIDE	604772384	8.70	9837	-0.056	0.046	0.103	0.153	357.983852	80.694158	2417.54	1621.20

2.4 Star Slots

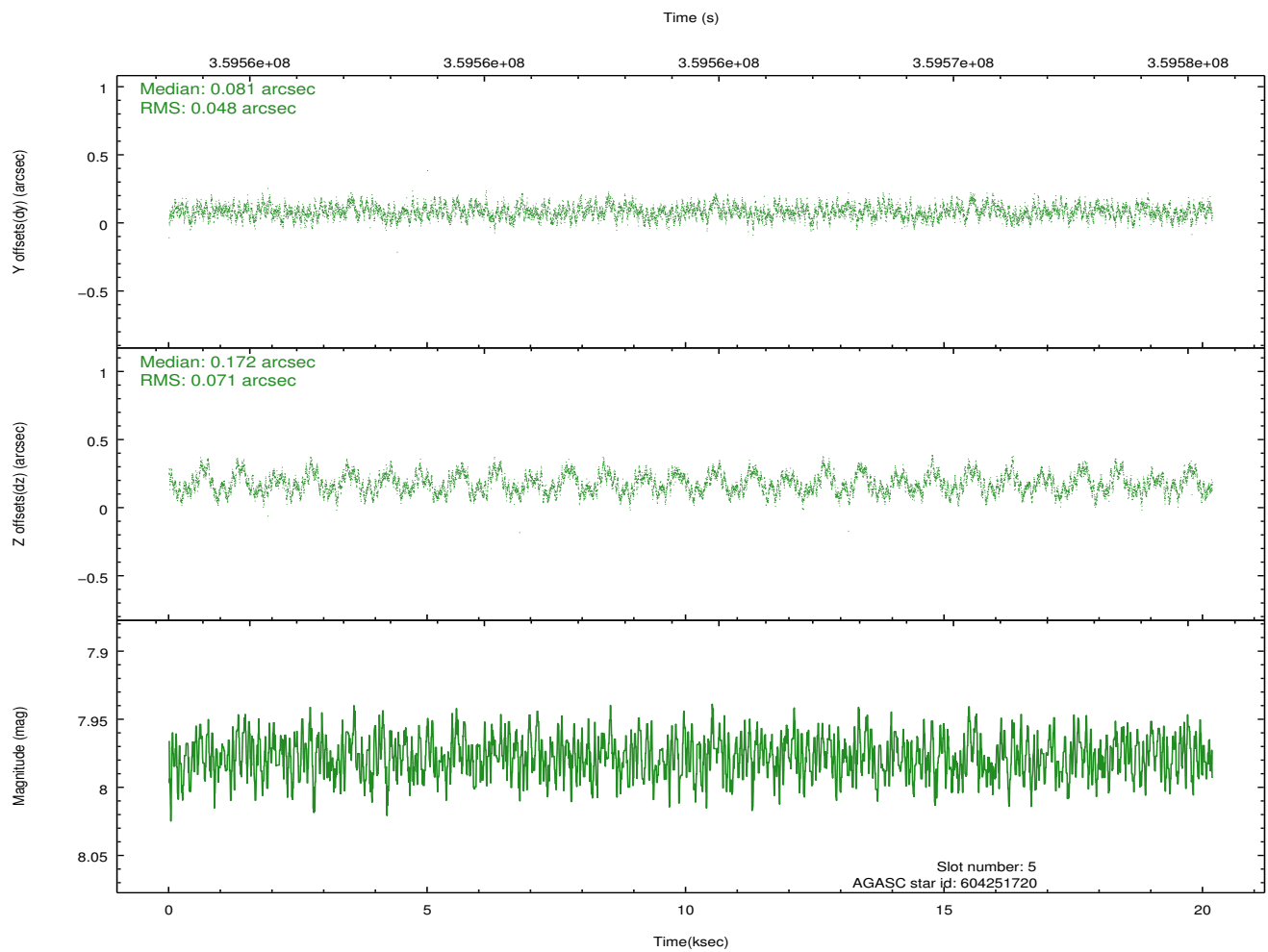
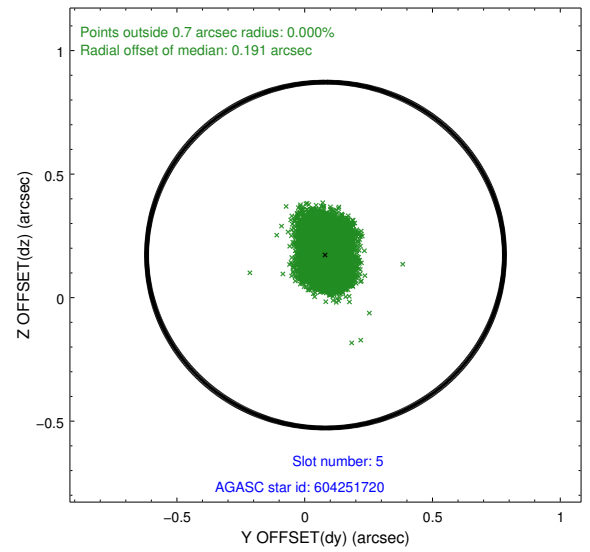
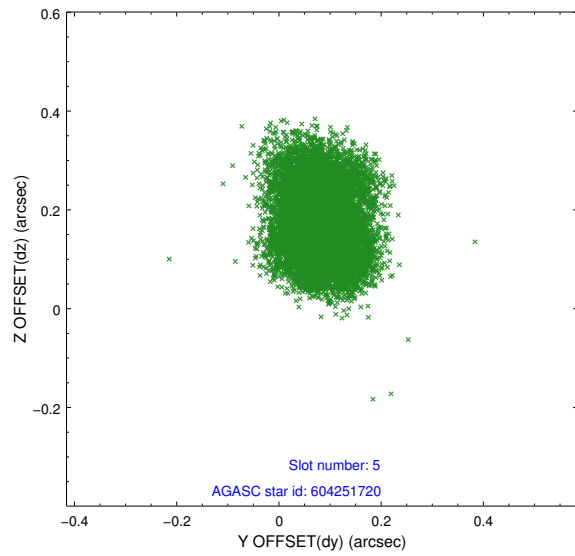
2.4.1 Slot 3



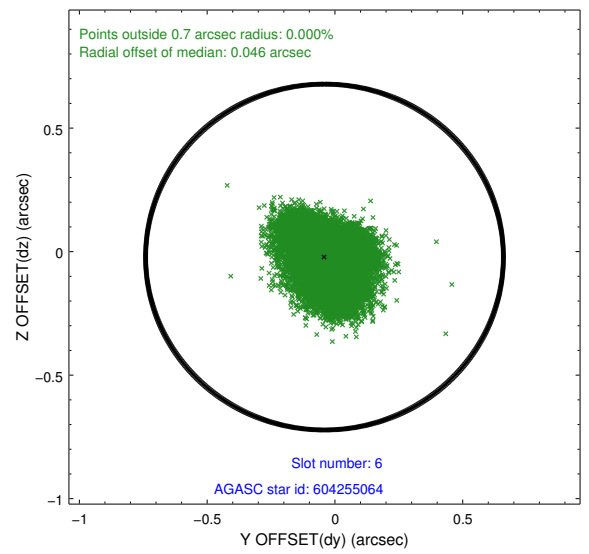
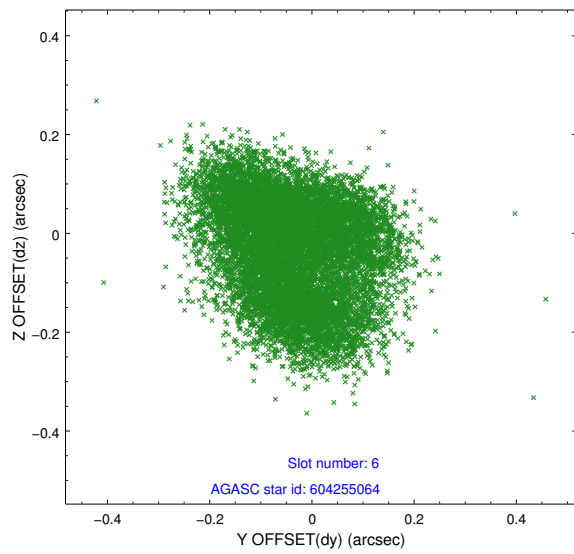
2.4.2 Slot 4



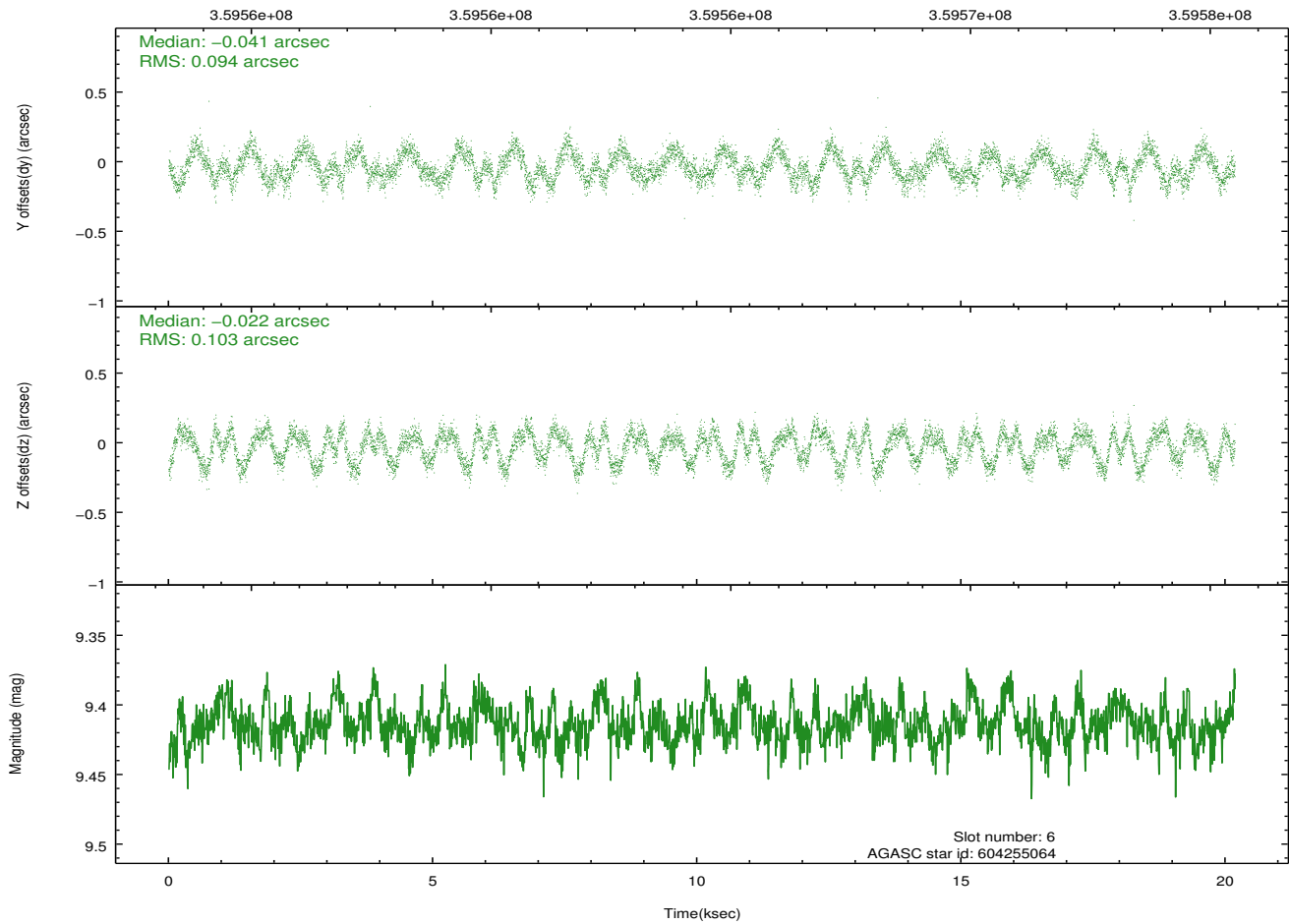
2.4.3 Slot 5



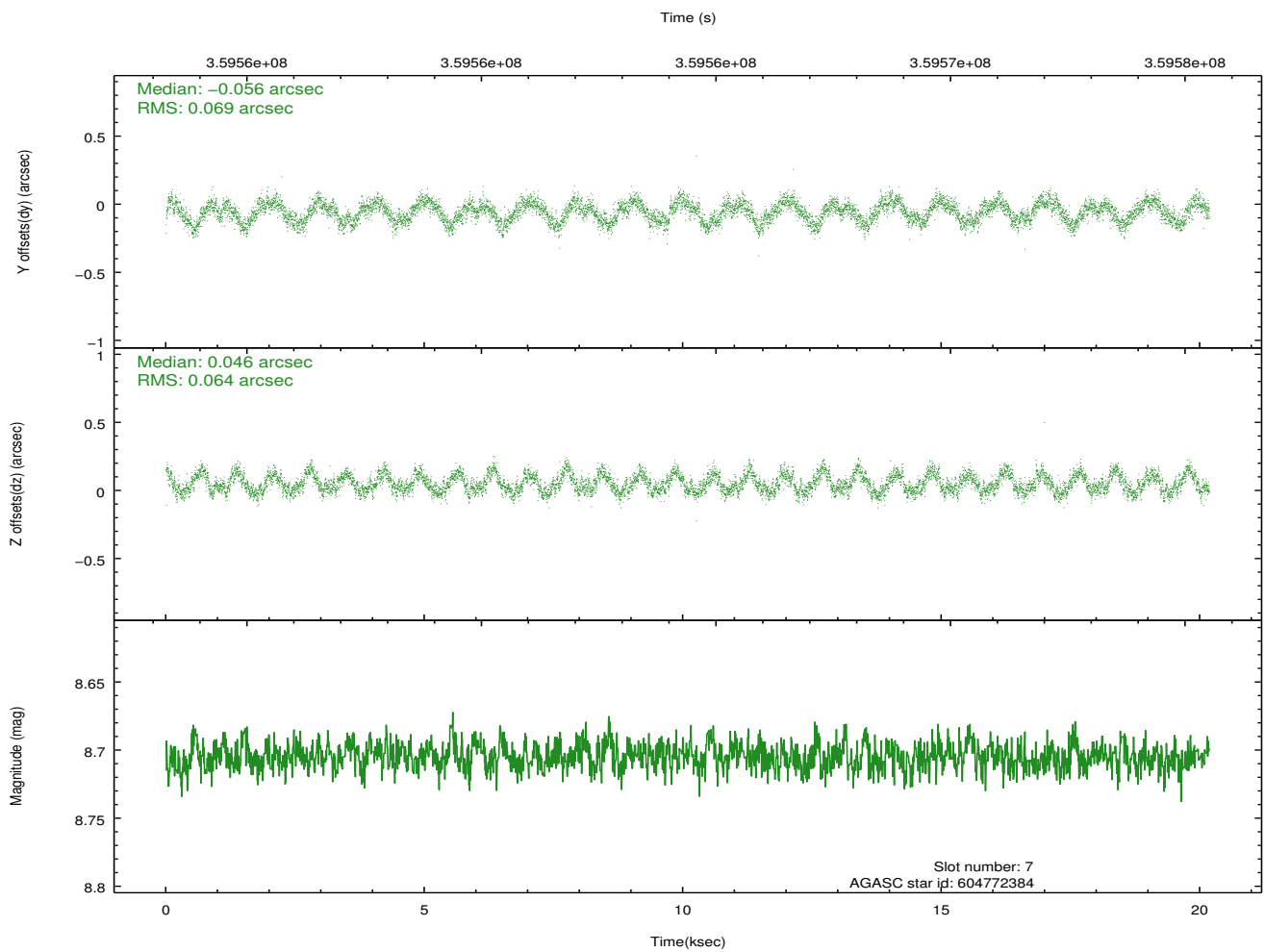
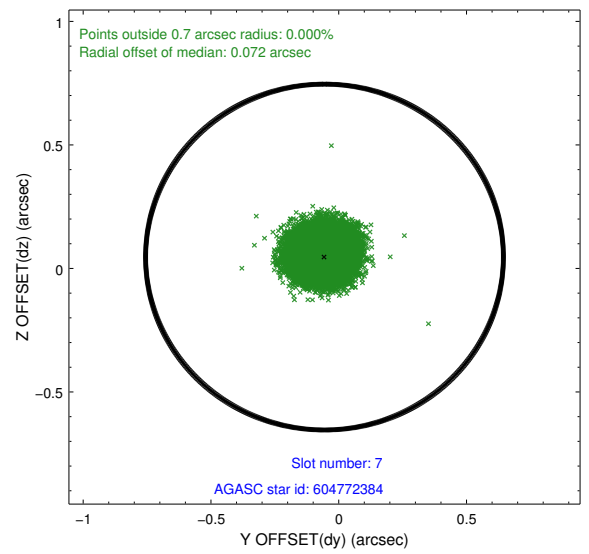
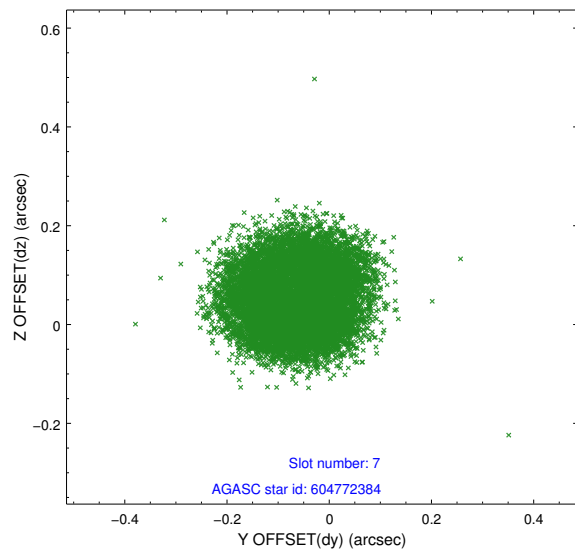
2.4.4 Slot 6



Time (s)

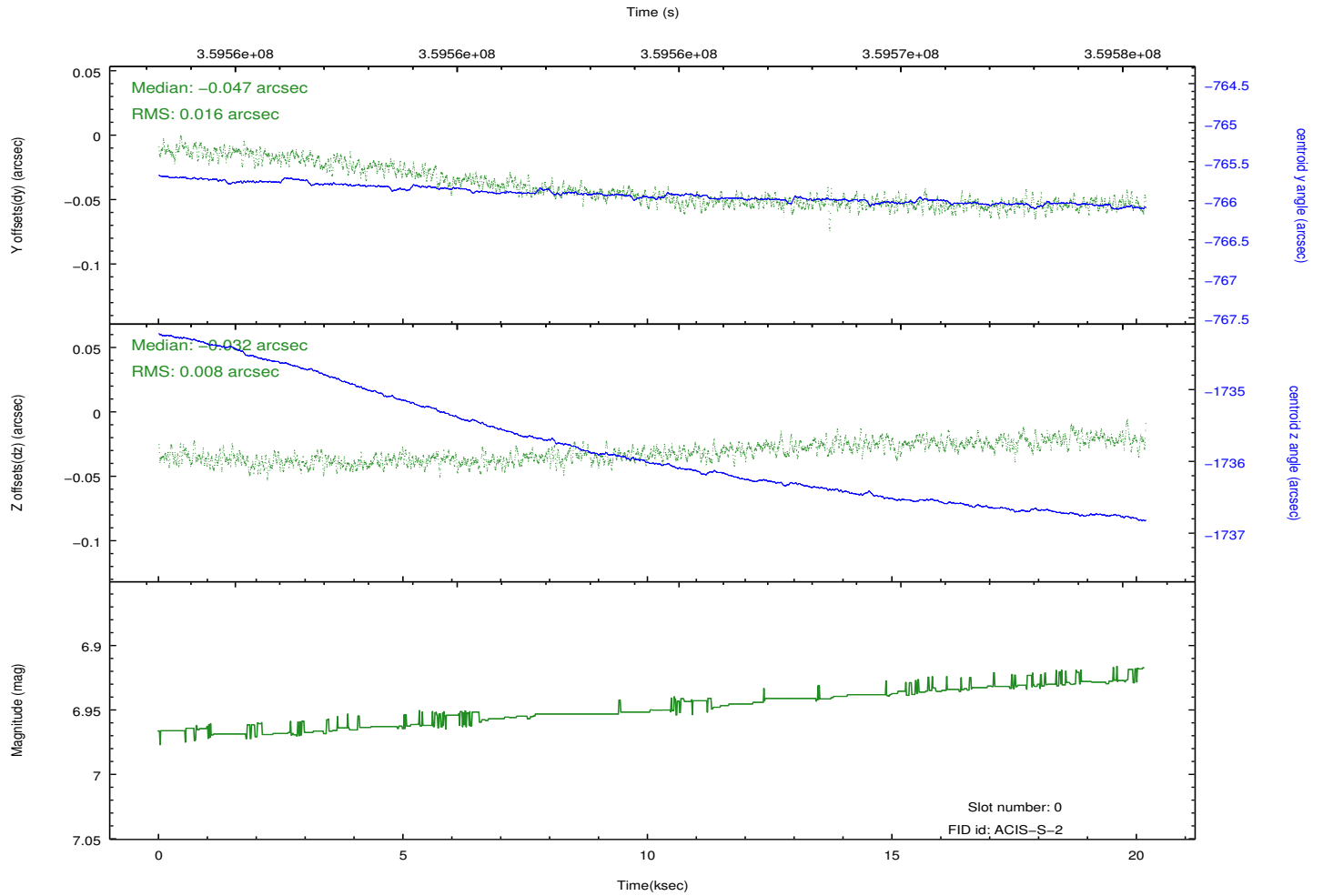
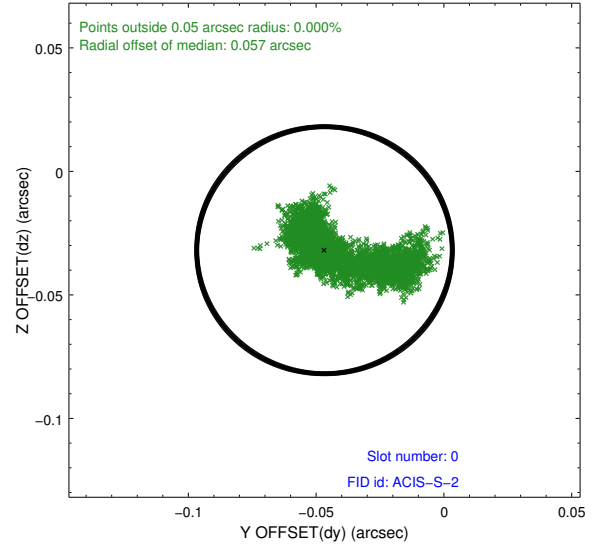
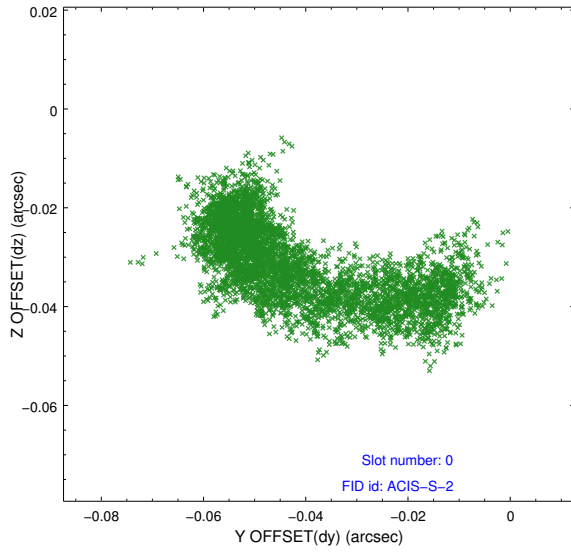


2.4.5 Slot 7

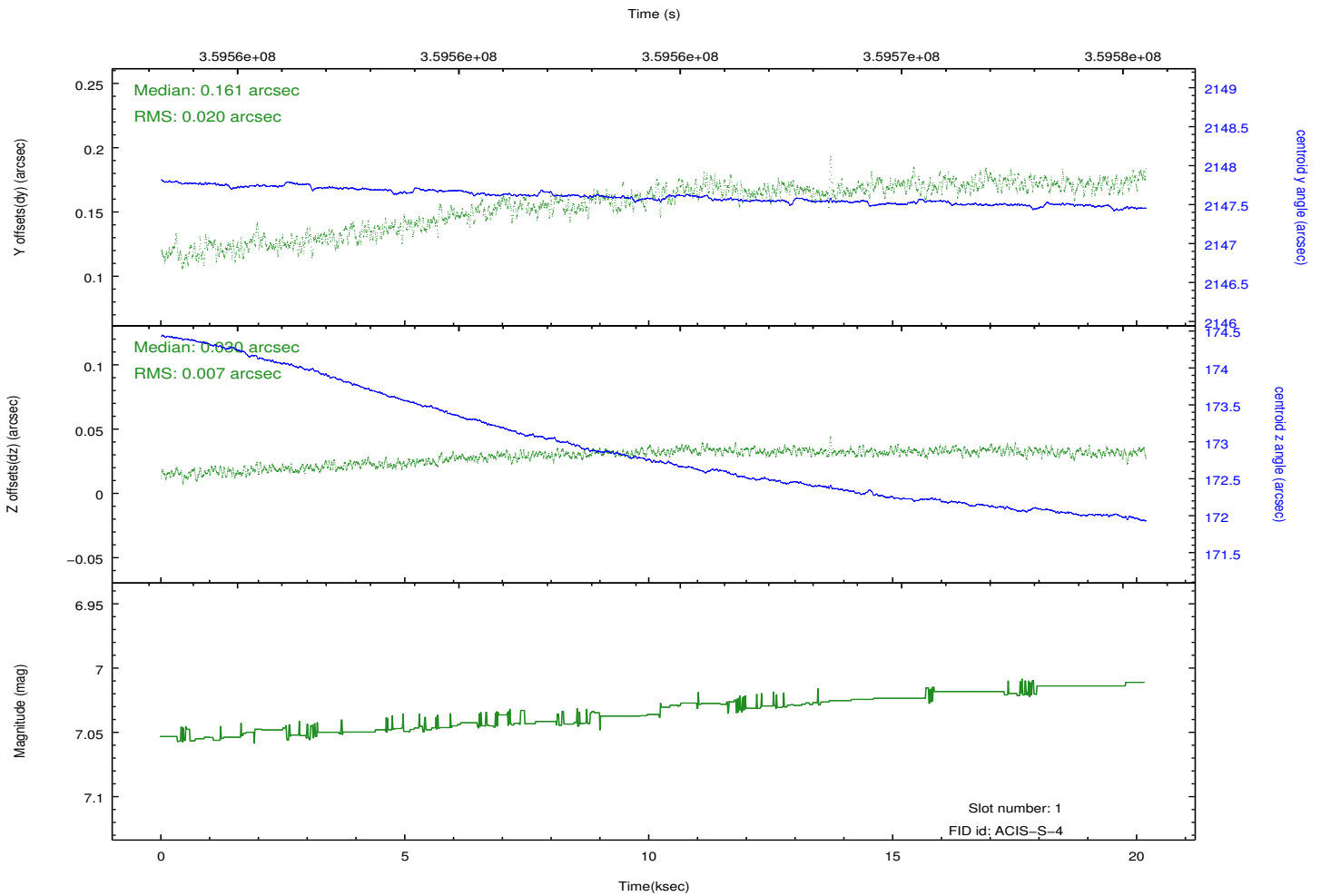
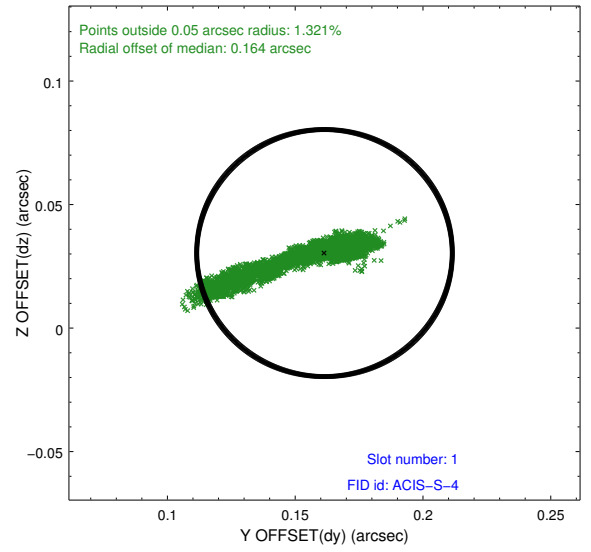
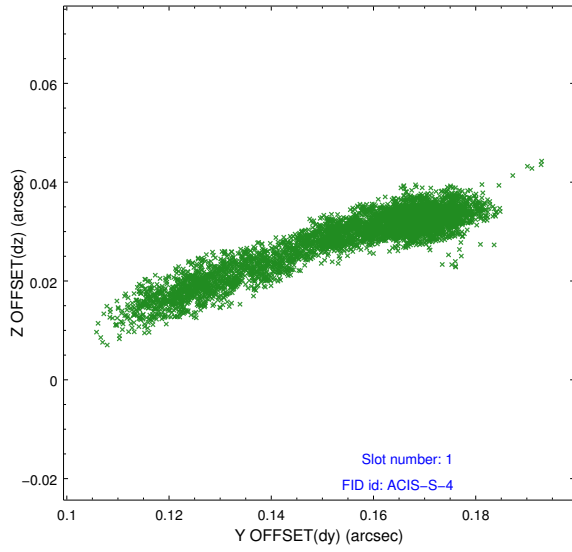


2.5 FID Slots

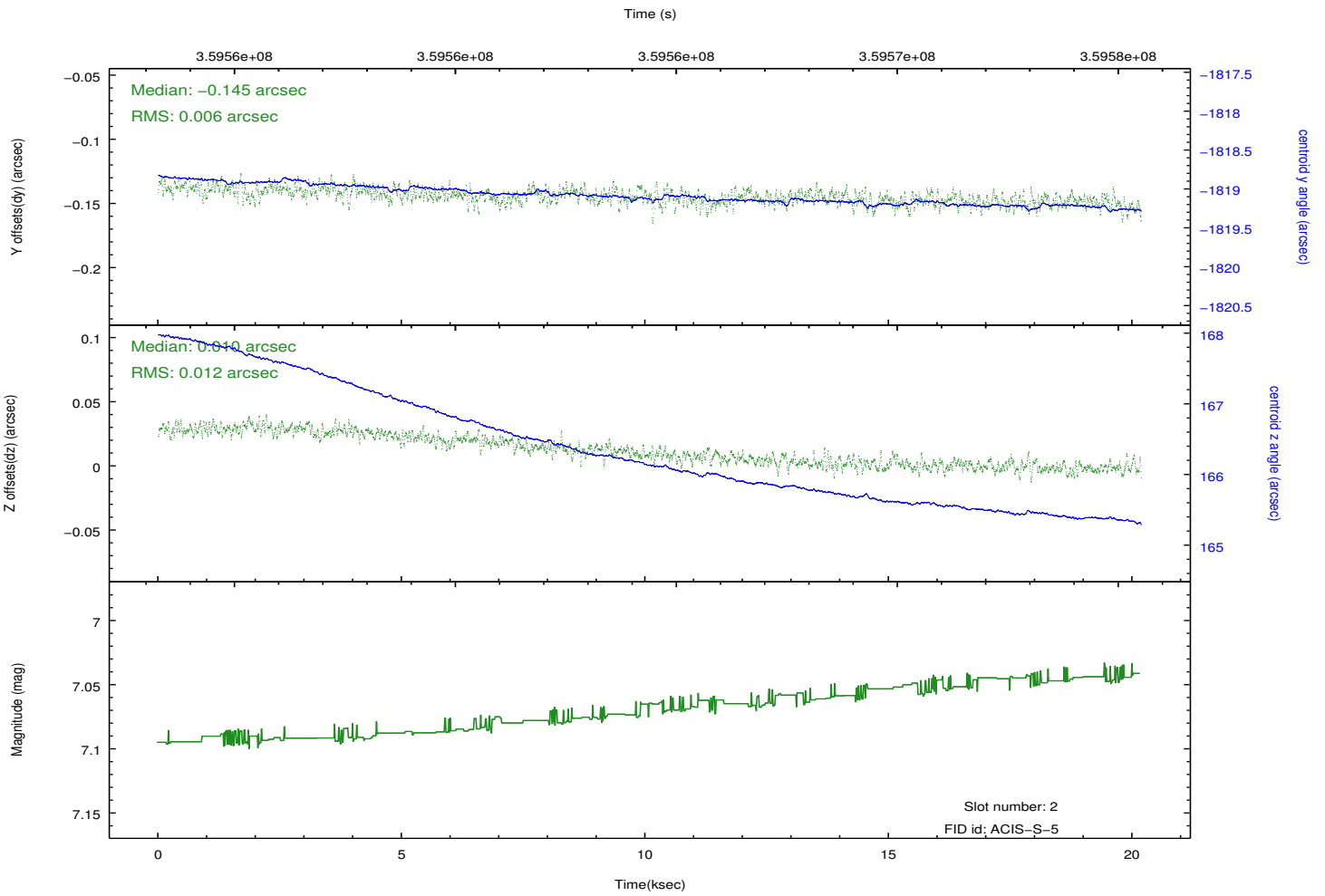
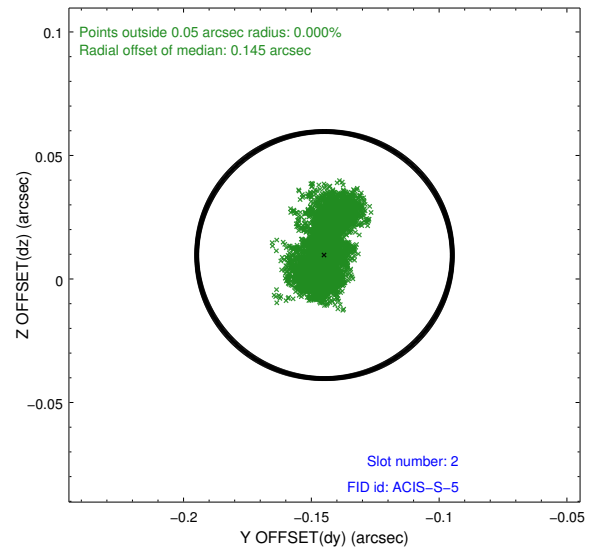
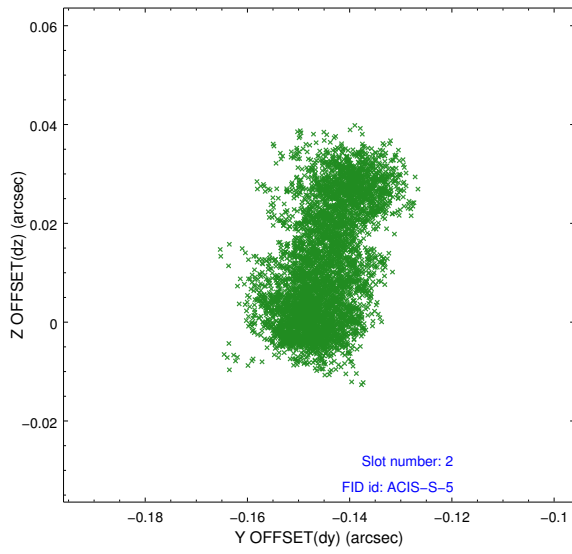
2.5.1 Slot 0



2.5.2 Slot 1



2.5.3 Slot 2



A Summary

A.1 Status

V&V Scientist	Jen Lauer
V&V Date (YYYY-MM-DD)	2012.06.11
V&V Edition	1
V&V Disposition and Status	OK
V&V Charge Time	20.1779001

A.2 Comments