

V&V Reference Report

L2 ASCDS Version : 8.4.4

Observation 9400 - L2 Version 2
Chandra X-Ray Center

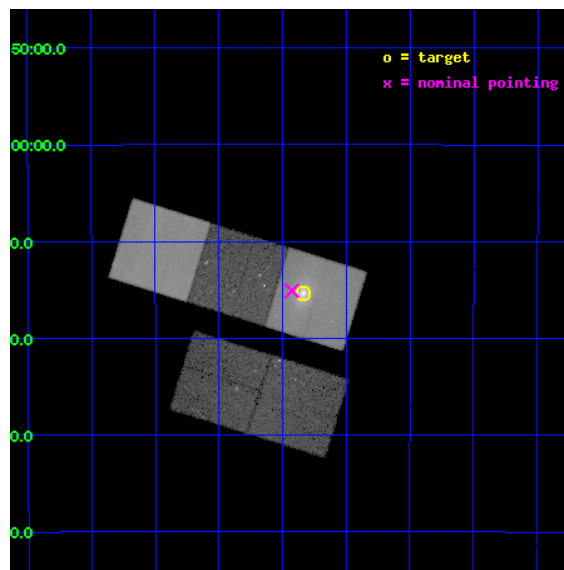
L2 Processing Date : May 9 2012

Contents

1	Front	2
2	OBI	3
2.1	OBI	3
2.1.1	Images	3
2.1.2	Bias	3
2.1.3	Parameters	4
2.1.4	Events	4
2.2	Compared Parameters	5
2.3	Aspect	6
2.4	Star Slots	9
2.4.1	Slot 3	9
2.4.2	Slot 4	10
2.4.3	Slot 5	11
2.4.4	Slot 6	12
2.4.5	Slot 7	13
2.5	FID Slots	14
2.5.1	Slot 0	14
2.5.2	Slot 1	15
2.5.3	Slot 2	16
A	Summary	17
A.1	Status	17
A.2	Comments	17

1 Front

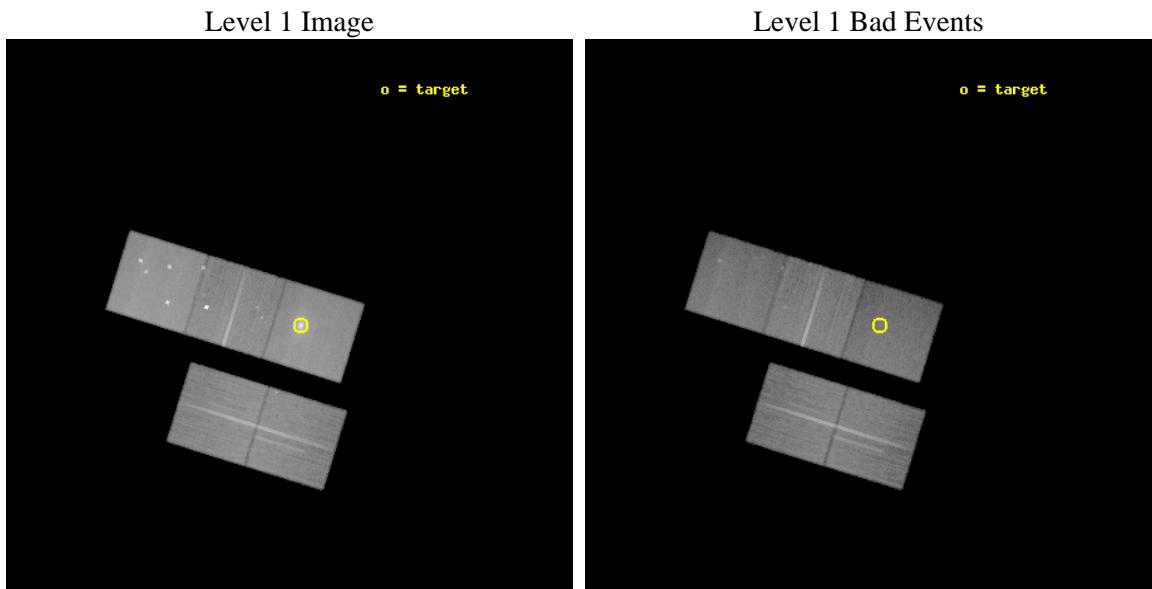
seq_num	800737	Sequence number
obs_id	9400	Observation id
title	The Link between optical nebulae and feedback in cluster cores	Pro
observer	Dr RODERICK JOHNSTONE	Principal investigator
object	RXCJ1023.8-2715	Source name
dtcycle	0	
cycle	P	events from which exps? Prim/Second/Both
ra_targ	155.958954	Observer's specified target RA [deg]
dec_targ	-27.256453	Observer's specified target Dec [deg]
ra_nom	155.98182645215	Nominal RA [deg]
dec_nom	-27.251891983379	Nominal Dec [deg]
roll_nom	17.203222499293	Nominal Roll [deg]
revision	2	Processing version of data
ontime	37178.300285935	Sum of GTIs [s]
livetime	36692.538422433	Livetime [s]
ontime2	37172.018245578	Sum of GTIs [s]
ontime3	37175.159275532	Sum of GTIs [s]
ontime5	37178.300285935	Sum of GTIs [s]
ontime6	37178.300285935	Sum of GTIs [s]
ontime7	37178.300285935	Sum of GTIs [s]
l2events	470843	Number of level 2 events



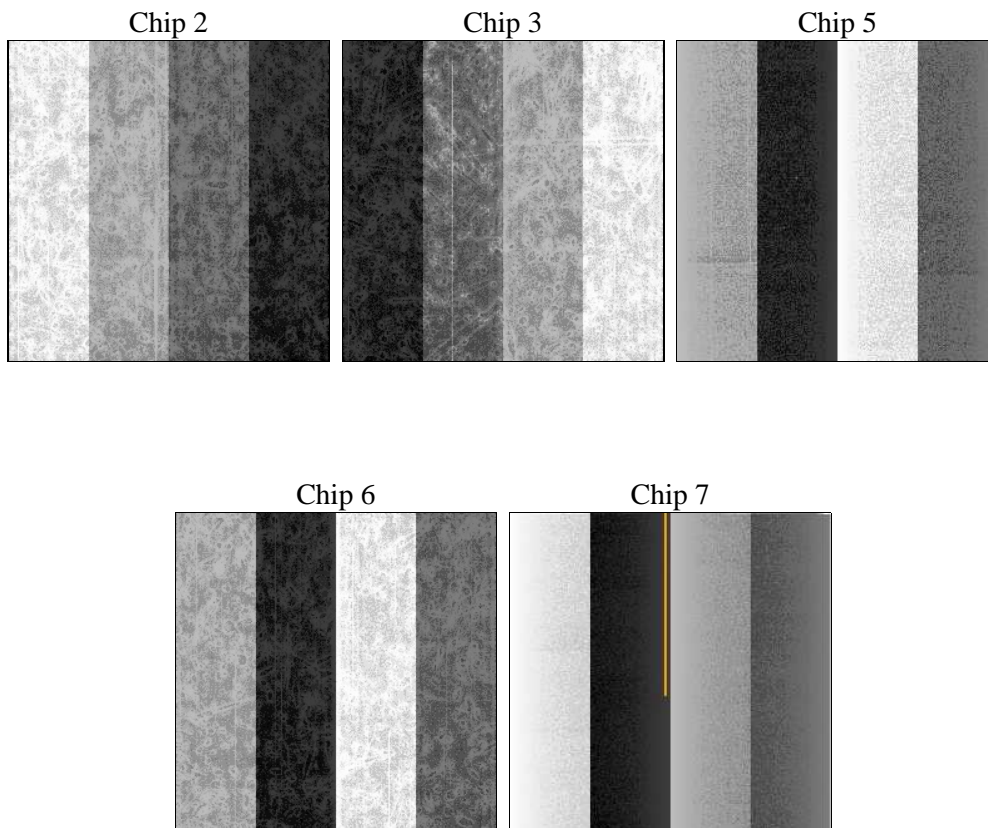
2 OBI

2.1 OBI

2.1.1 Images



2.1.2 Bias



2.1.3 Parameters

obi_num	0	Obi number	sched_exp_time	37000.000000	[s] Scheduled observation exposure time
ascdsver	8.4.4	Processing system revision	ontime	37178.300285935	Sum of GTIs [s]
caldbver	4.4.9	 	ontime2	37172.018245578	Sum of GTIs [s]
date	2012-05-09T18:50:40	Date and time of file creation	ontime3	37175.159275532	Sum of GTIs [s]
revision	2	Processing version of data	ontime5	37178.300285935	Sum of GTIs [s]
			ontime6	37178.300285935	Sum of GTIs [s]
			ontime7	37178.300285935	Sum of GTIs [s]
			l1events	1740008	Number of level 1 events

2.1.4 Events

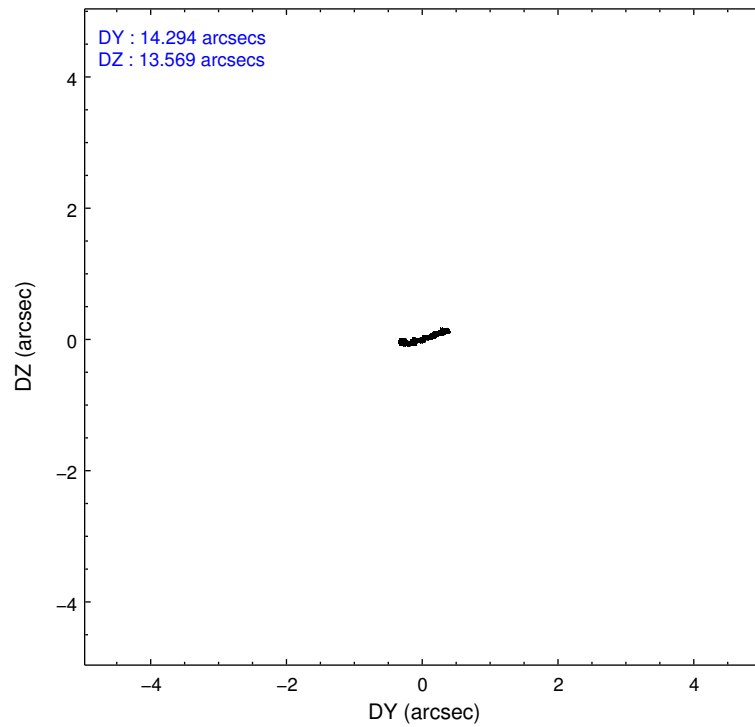
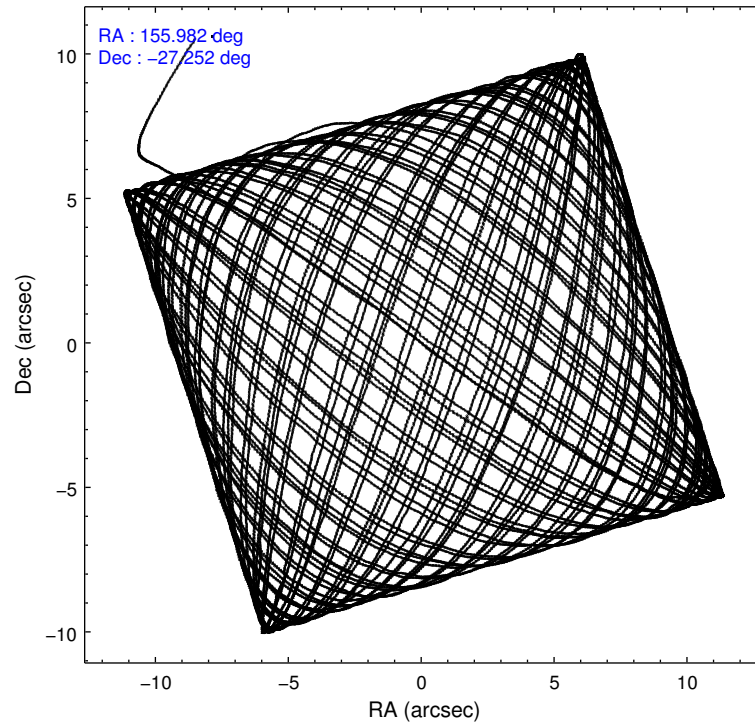
	ccd 2	ccd 3	ccd 5	ccd 6	ccd 7
level 1 events	301699	291776	428825	326676	391032
rejected events	273490	263706	208085	270851	181995
rejected %	90%	90%	48%	82%	46%

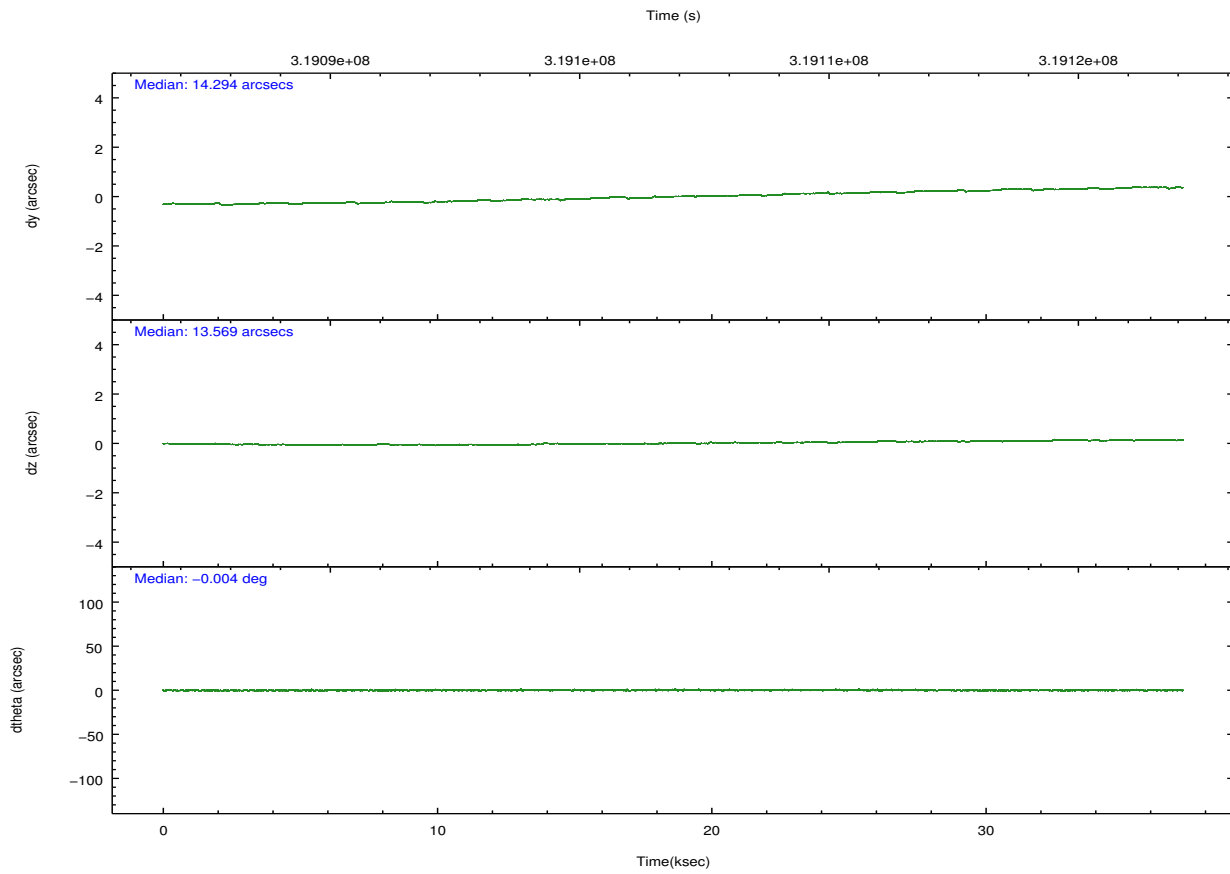
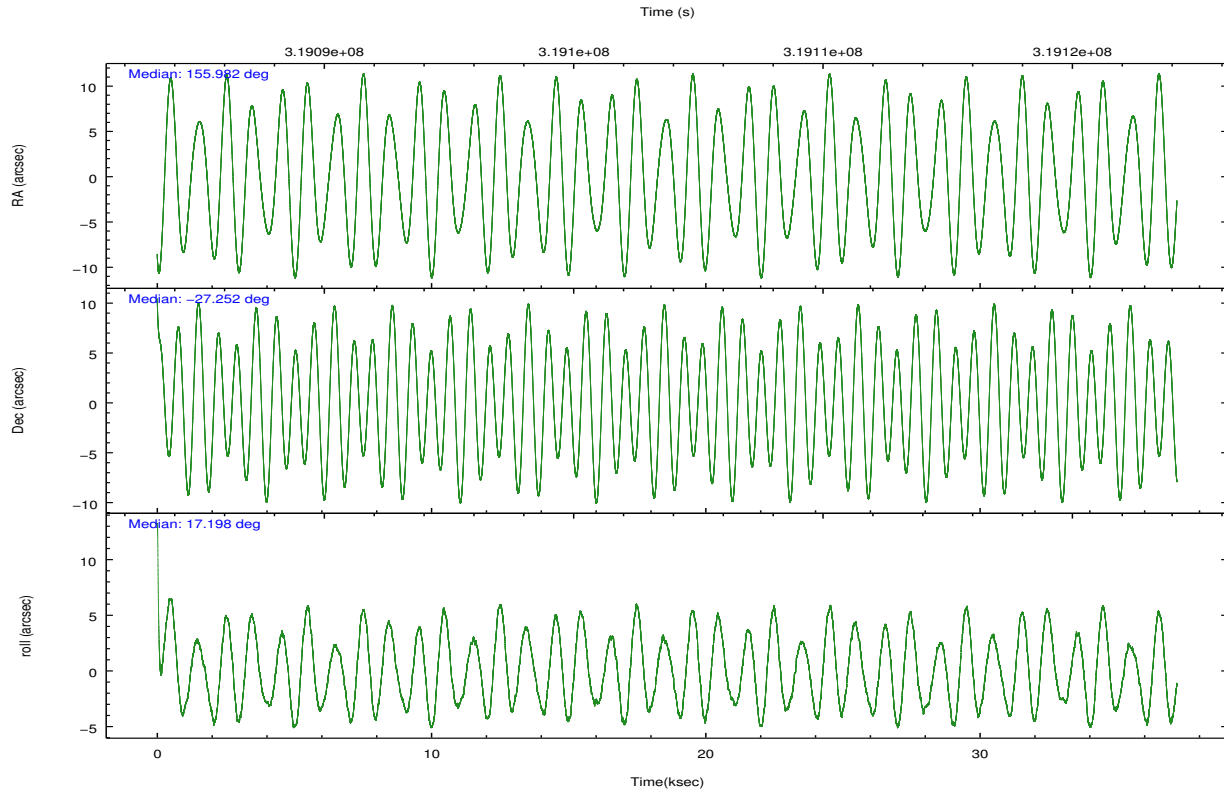
	ccd 2	ccd 3	ccd 5	ccd 6	ccd 7
grade 0 events	10123	10102	37786	24079	31634
	3%	3%	8%	7%	8%
grade 1 events	158	138	1485	216	412
	0%	0%	0%	0%	0%
grade 2 events	6613	6077	61015	18307	46345
	2%	2%	14%	5%	11%
grade 3 events	3058	3125	7801	3415	20365
	1%	1%	1%	1%	5%
grade 4 events	3217	3221	7450	3282	20198
	1%	1%	1%	1%	5%
grade 5 events	9429	11914	30967	12033	34623
	3%	4%	7%	3%	8%
grade 6 events	5257	5607	106958	6830	90746
	1%	1%	24%	2%	23%
grade 7 events	263844	251592	175363	258514	146709
	87%	86%	40%	79%	37%

2.2 Compared Parameters

Parameter	Planned	Actual	Parameter	Planned	Actual
Instrument	ACIS	ACIS	Obspar format version number	7	7
Detector	ACIS-23567	ACIS-23567	Obspar file type	PREDICTED	ACTUAL
Grating	NONE	NONE	Obspar update status	NONE	UPDATED
Data mode	VFAINT	VFAINT	CCD I0 on	N	N
Observation mode	POINTING	POINTING	CCD I1 on	N	N
[deg] Pointing RA	155.961252	155.9818264521525	CCD I2 on	O1	Y
[deg] Pointing Dec	-27.272210	-27.25189198337856	CCD I3 on	O2	Y
[deg] Pointing Roll	17.037168	17.2032224992932	CCD S0 on	N	N
[mm] SIM focus pos	-0.684267	-0.6828225247311905	CCD S1 on	Y	Y
[mm] SIM defocus	0	0.001444936568705701	CCD S2 on	O3	Y
[mm] SIM translation stage pos	-190.132523	-190.1425803651734	CCD S3 on	Y	Y
[mm] SIM translation stage offset	0	0.01005778216563158	CCD S4 on	N	N
[s] Observation start time (MET)	319085328.184000	319084304.33755	CCD S5 on	N	N
Observation start date	2008-02-11T02:47:43	2008-02-11T02:31:44	Number of optional ACIS chips dropped	0	0
[s] Observation end time (MET)	319122328.184000	319123162.08944	On-chip summing requested	N	N
Observation end date	2008-02-11T13:04:23	2008-02-11T13:19:22	Subarray requested	NONE	NONE
Read mode	TIMED	TIMED	Alternating exposures requested	N	N
			[s] Primary exposure time	0.000000	3.1

2.3 Aspect



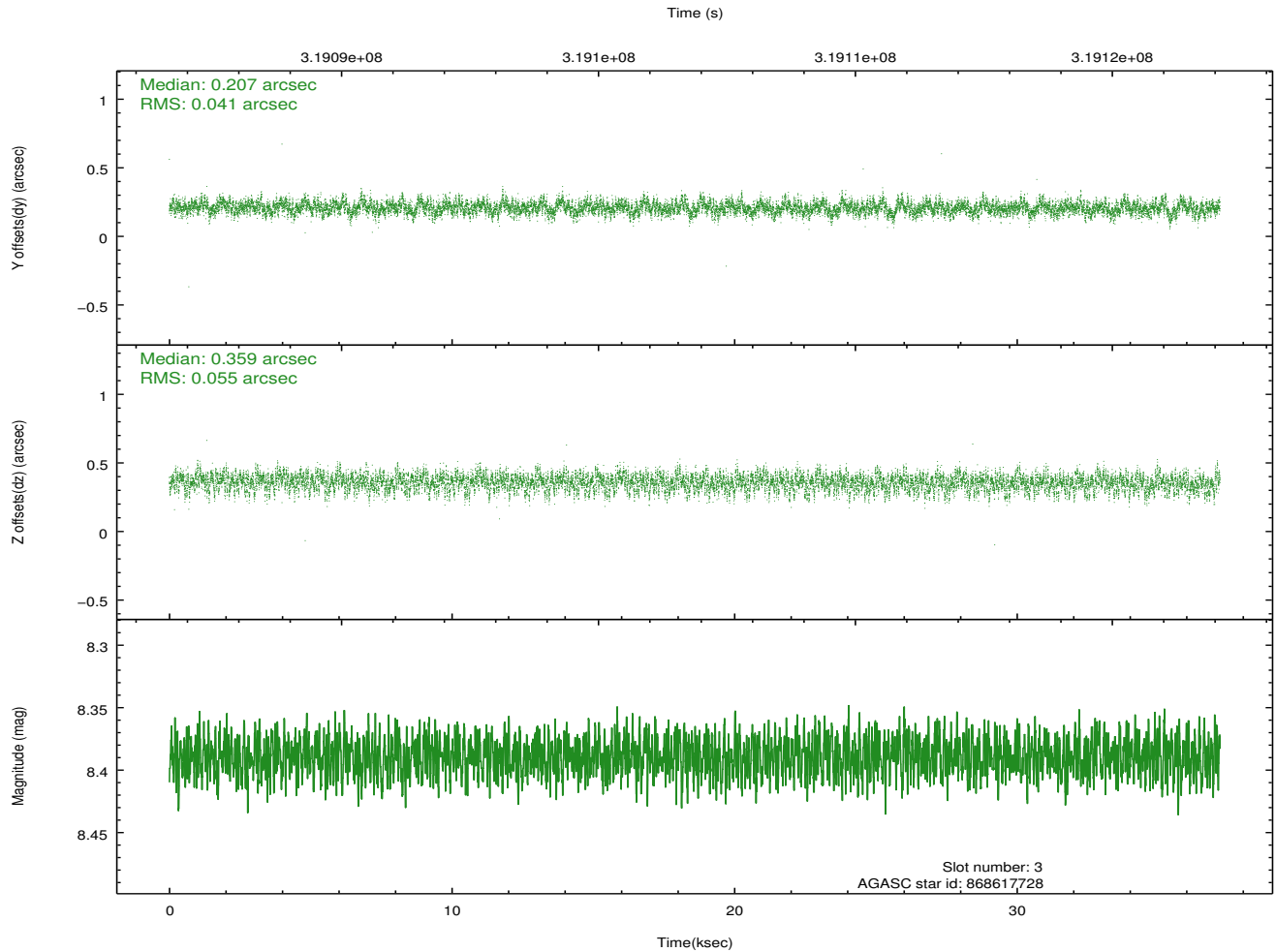
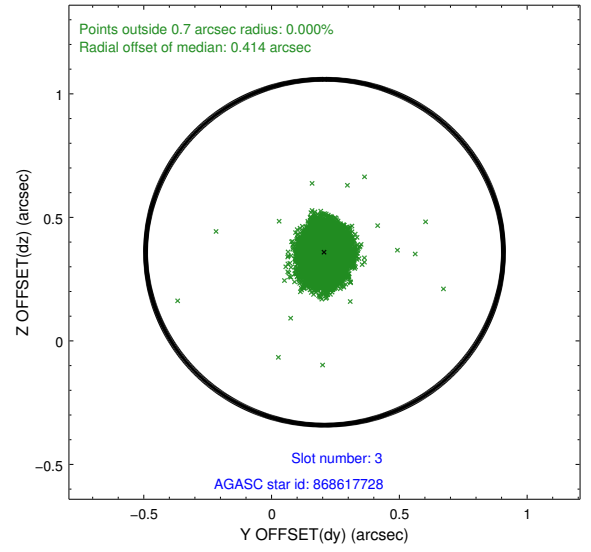
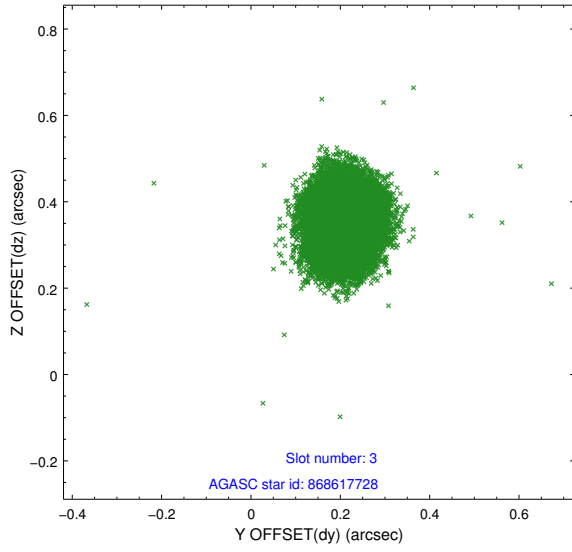


Slot Statistics

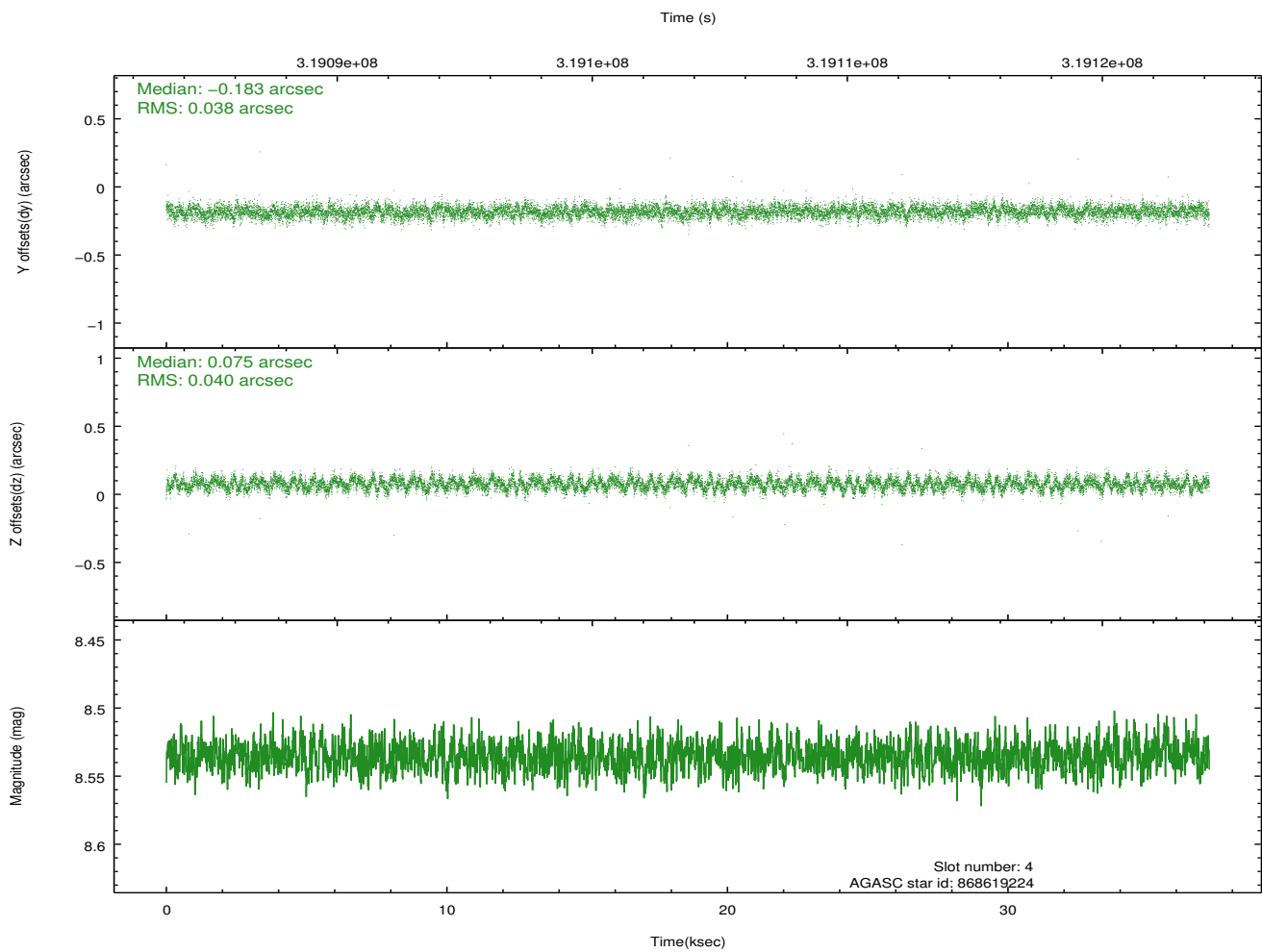
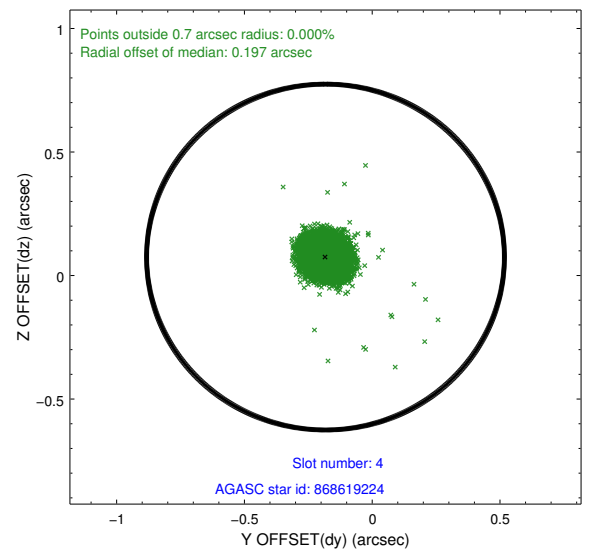
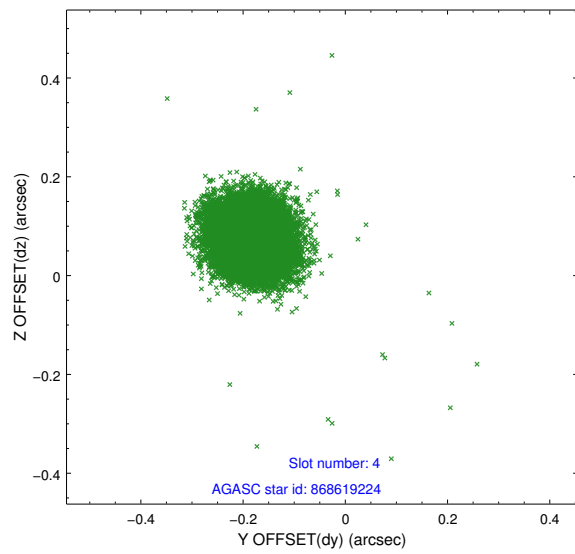
slot	status	id	mag	n_pts	med_dy	med_dz	dr1	dr2	ra	dec	mean_y	mean_z
0	FID	ACIS-S-2	7.10	9069	-0.060	-0.066	0.012	0.018	0.000000	0.000000	-767.32	-1734.94
1	FID	ACIS-S-4	7.19	9069	0.190	0.047	0.013	0.019	0.000000	0.000000	2146.21	173.61
2	FID	ACIS-S-5	7.23	9068	-0.160	0.028	0.007	0.011	0.000000	0.000000	-1820.21	167.32
3	GUIDE	868617728	8.39	18131	0.207	0.359	0.072	0.116	155.714299	-28.013499	-1532.62	-2321.64
4	GUIDE	868619224	8.54	18126	-0.183	0.075	0.058	0.093	156.517004	-26.987342	2003.72	454.55
5	GUIDE	868623192	8.23	18135	0.099	-0.169	0.075	0.119	155.710830	-26.673600	-138.91	2295.48
6	GUIDE	868624936	8.07	18134	-0.114	-0.186	0.053	0.088	156.340756	-26.598868	1877.58	1958.15
7	GUIDE	868623824	8.98	18125	-0.010	-0.075	0.075	0.123	155.217871	-26.869635	-1859.98	2078.31

2.4 Star Slots

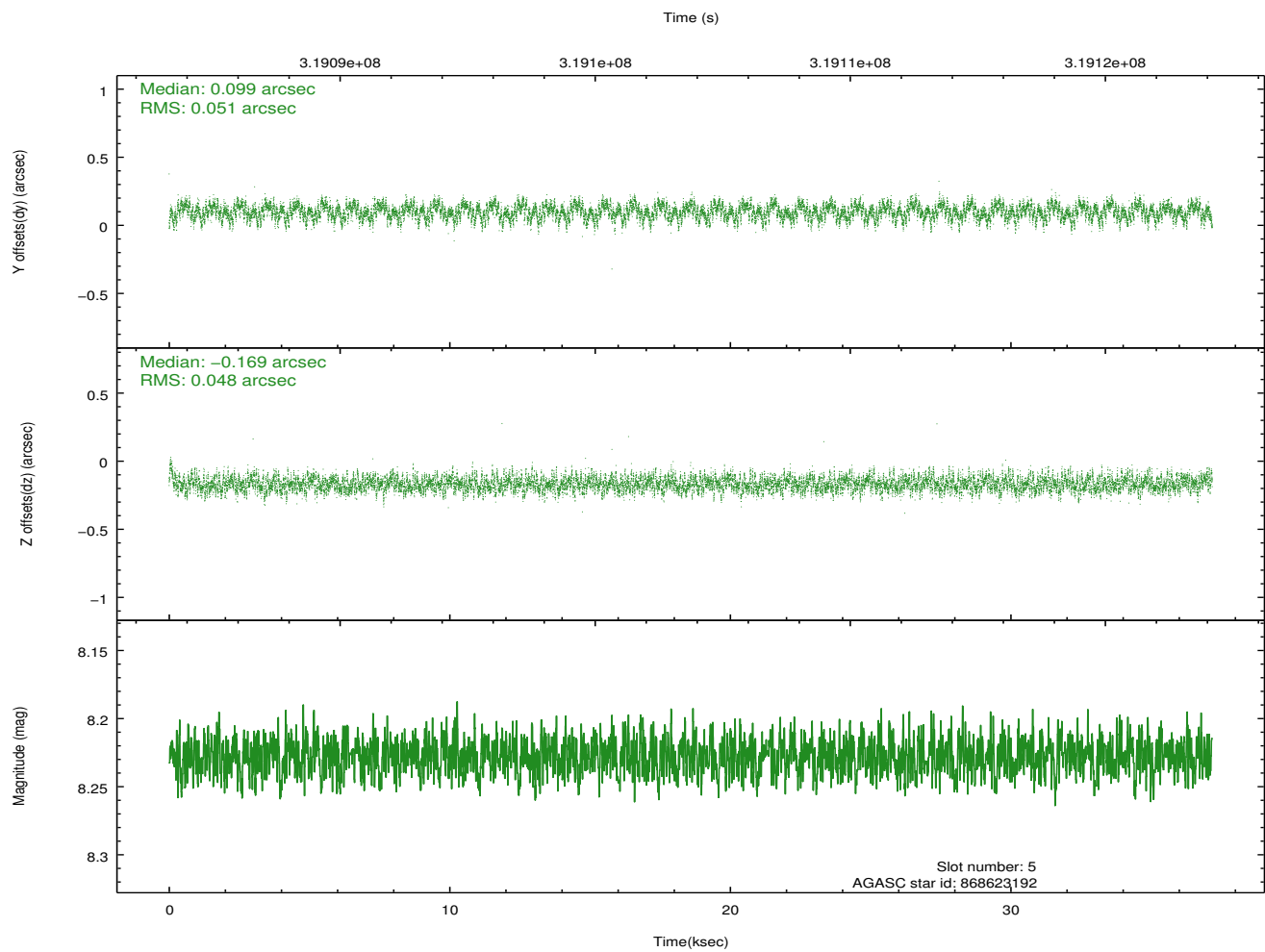
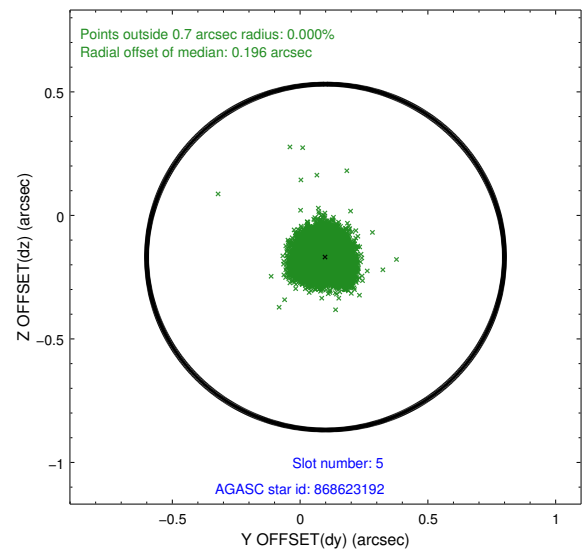
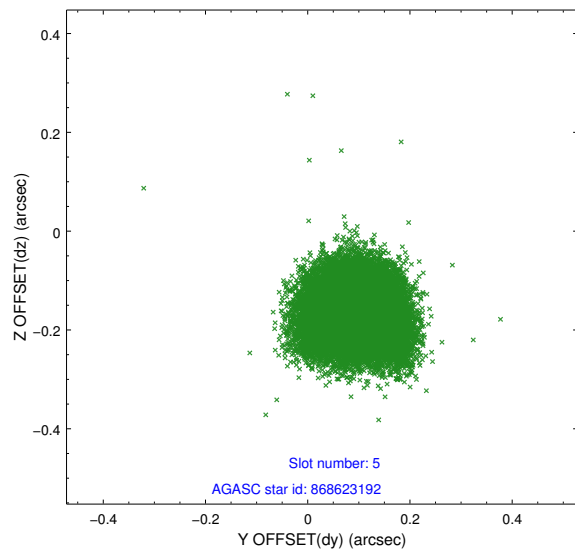
2.4.1 Slot 3



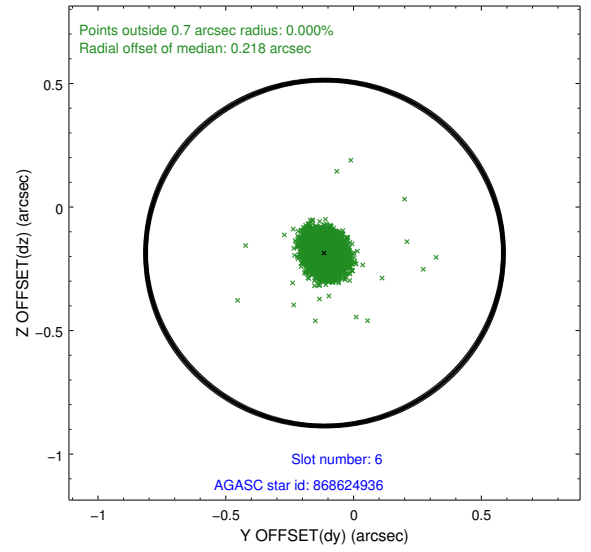
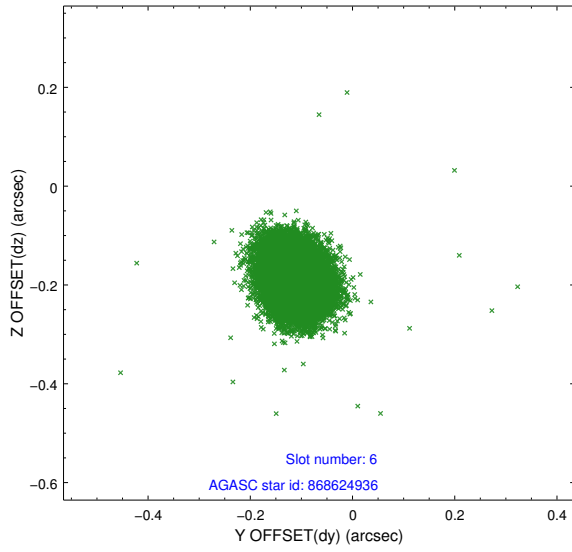
2.4.2 Slot 4



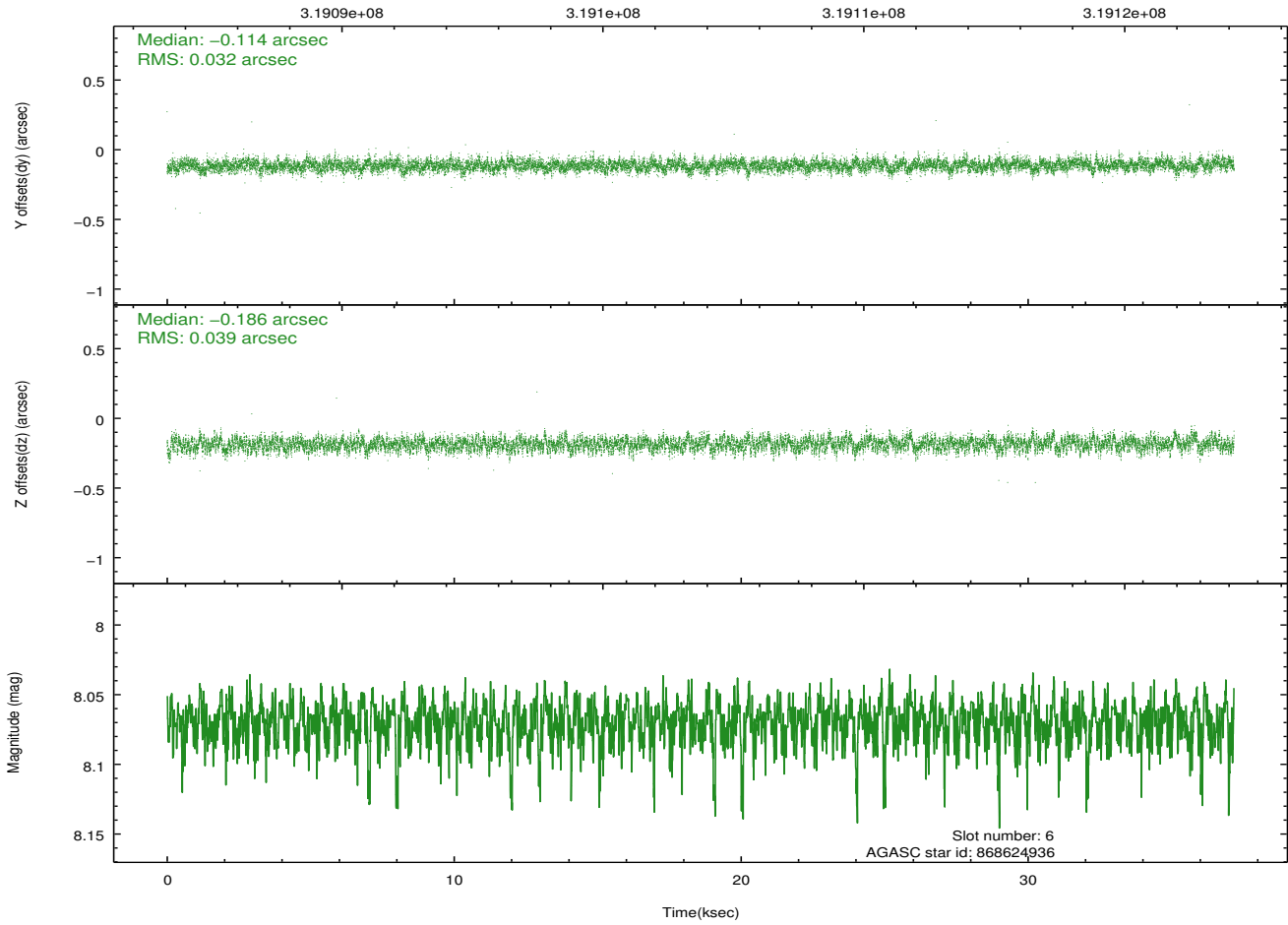
2.4.3 Slot 5



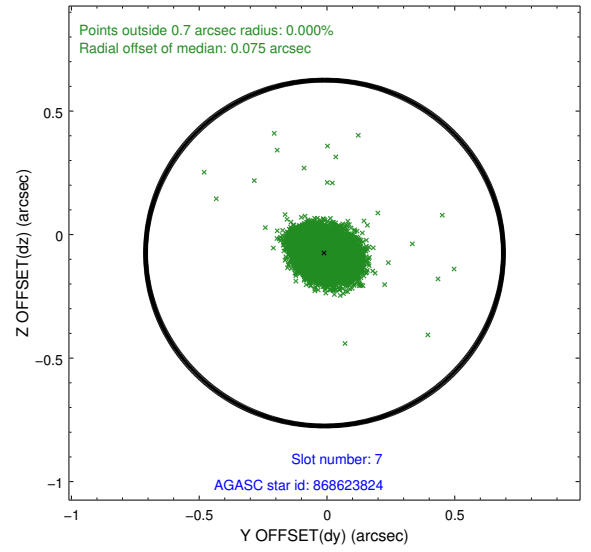
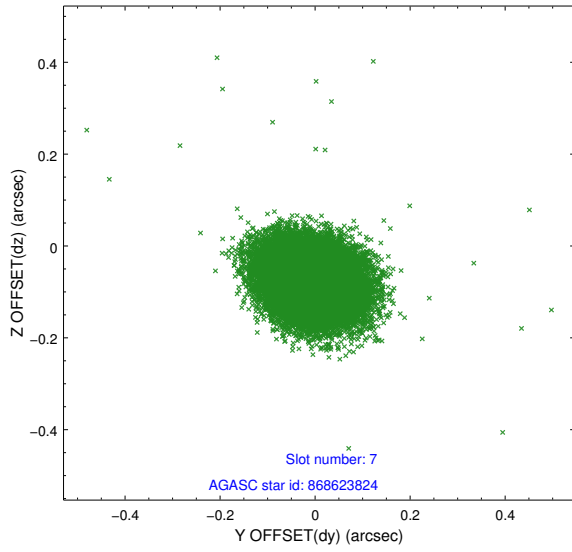
2.4.4 Slot 6



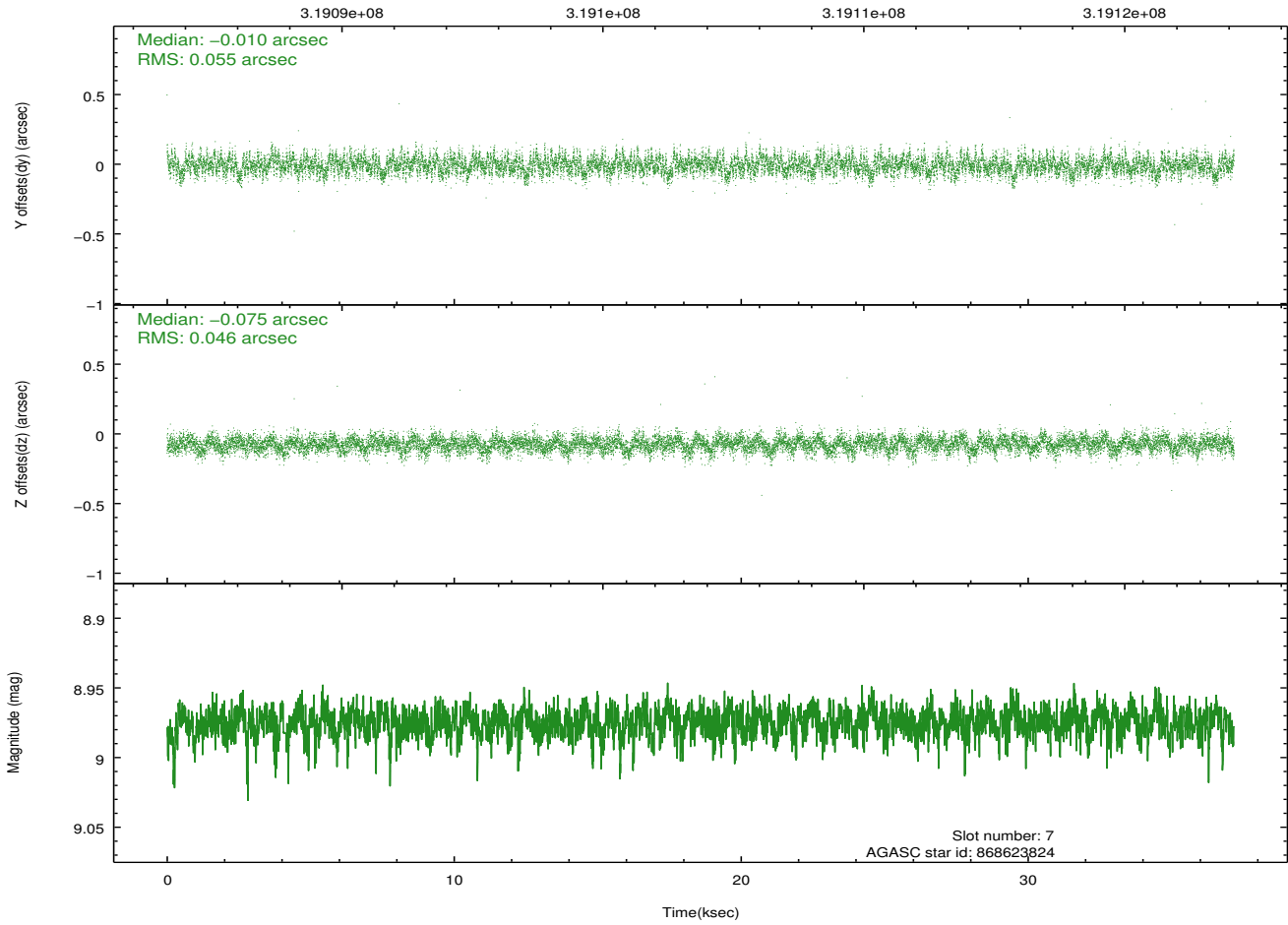
Time (s)



2.4.5 Slot 7

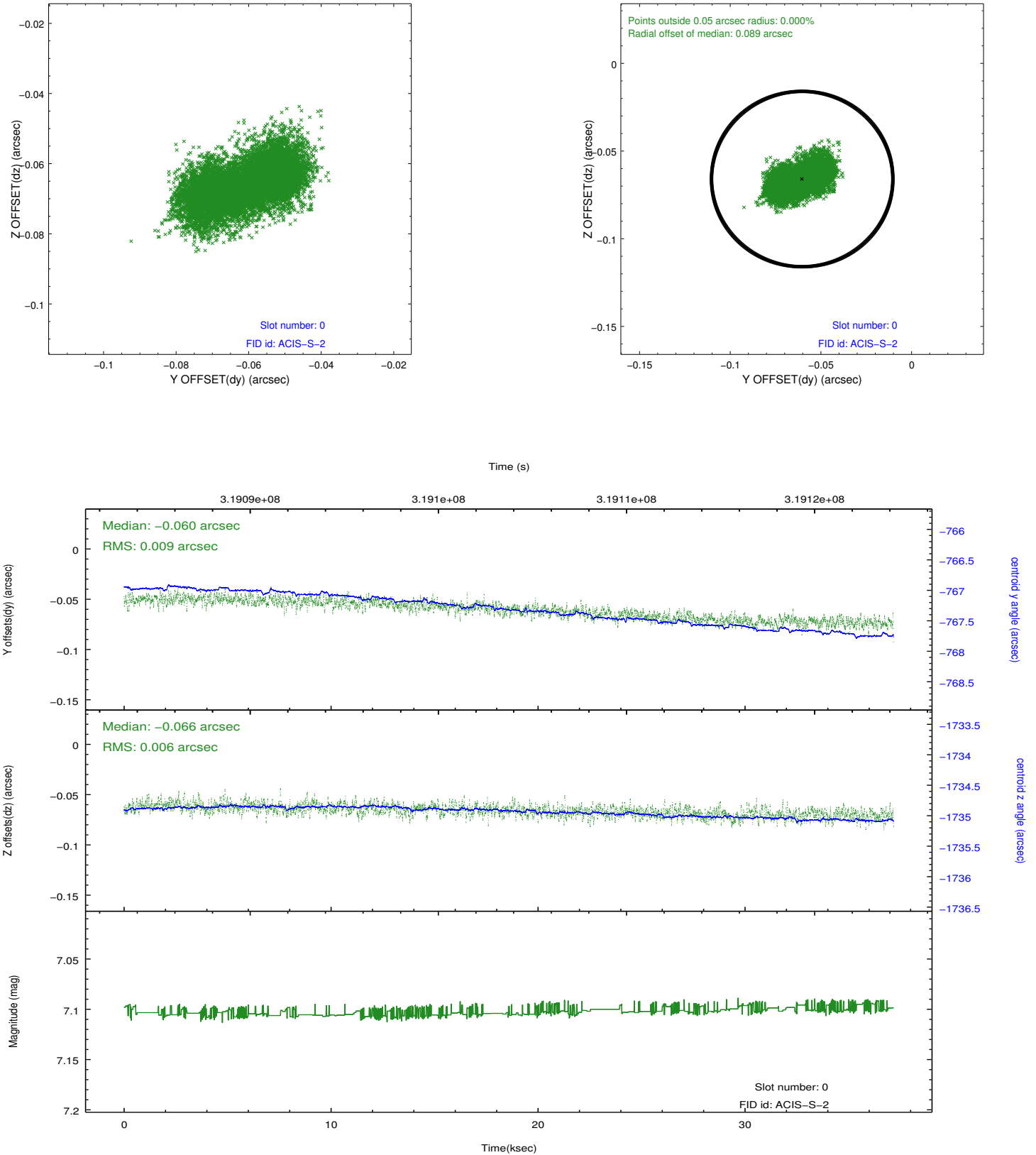


Time (s)

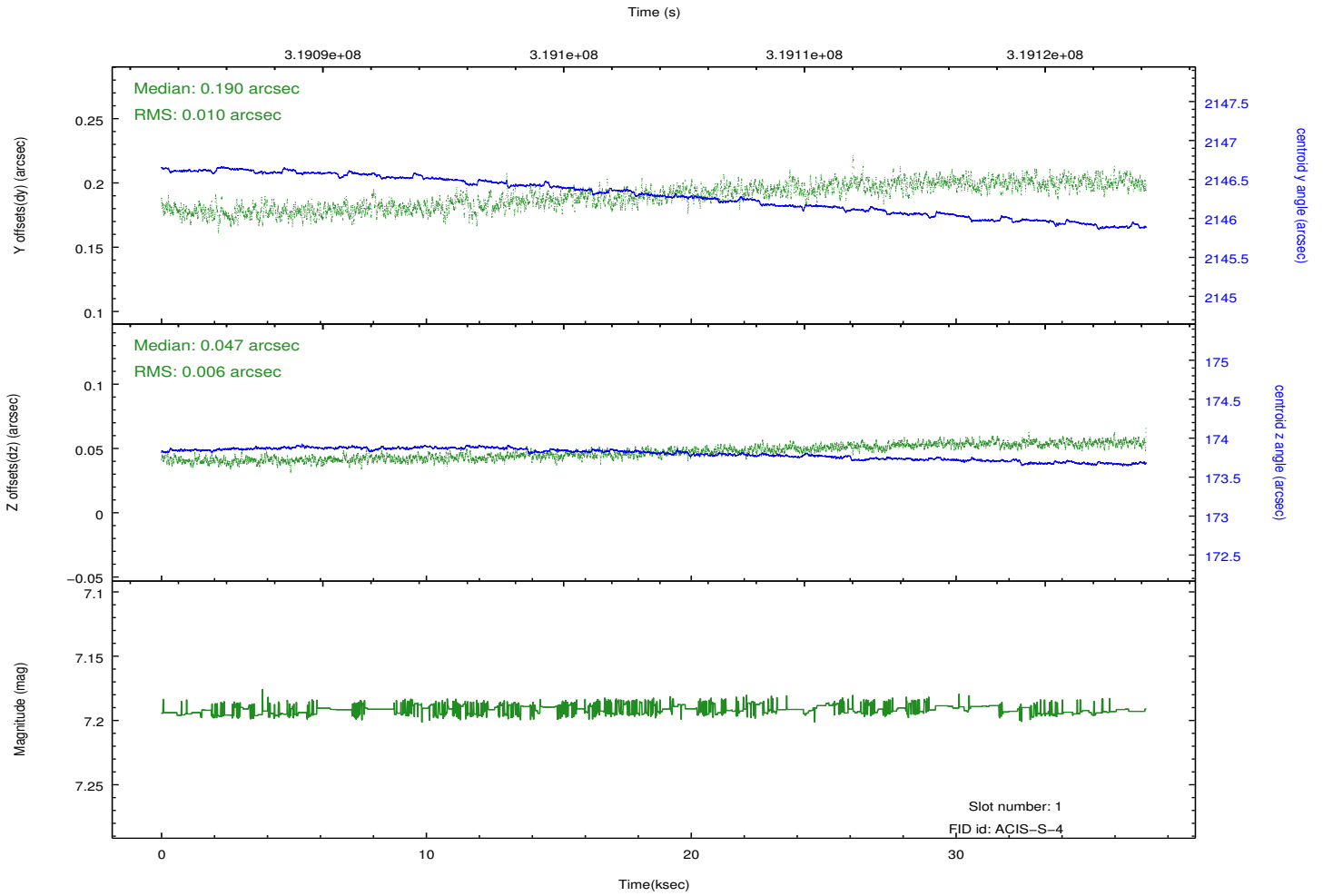
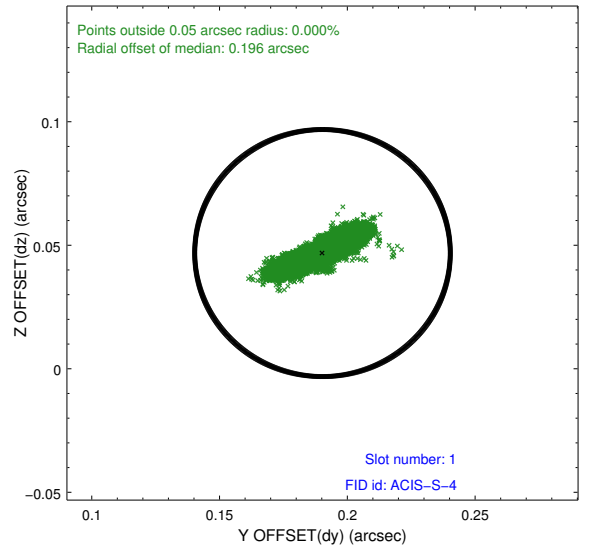
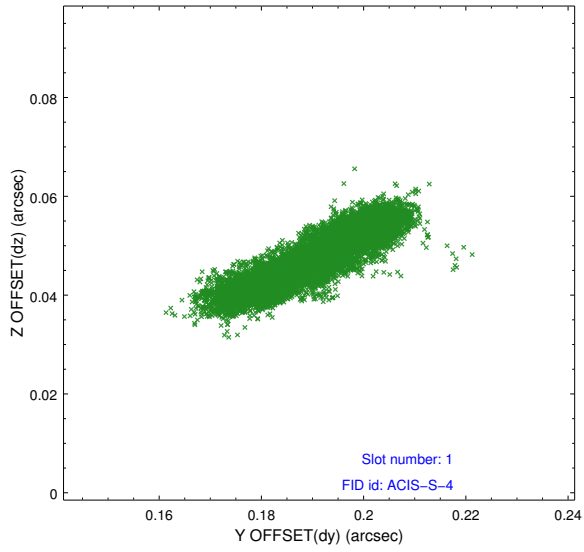


2.5 FID Slots

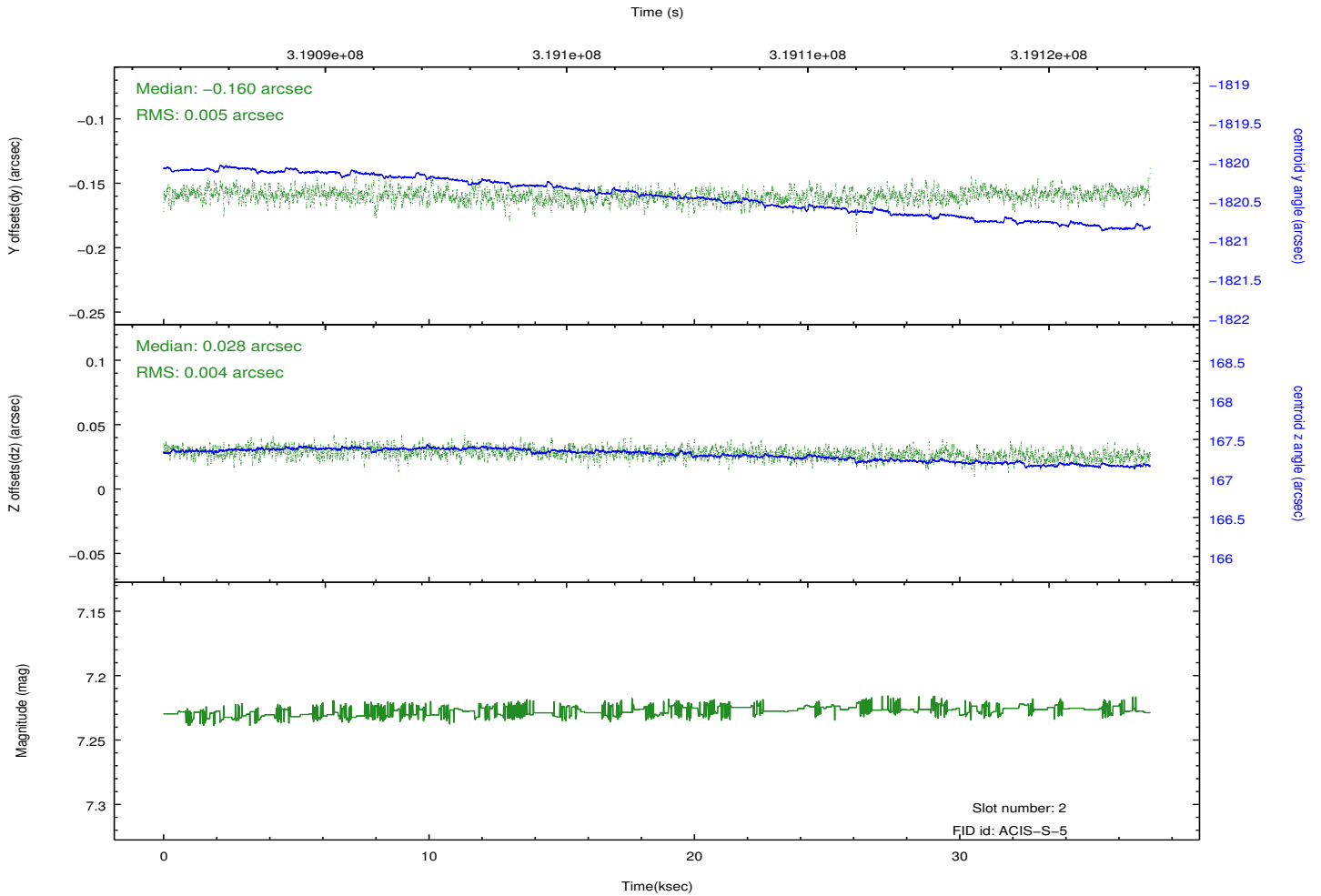
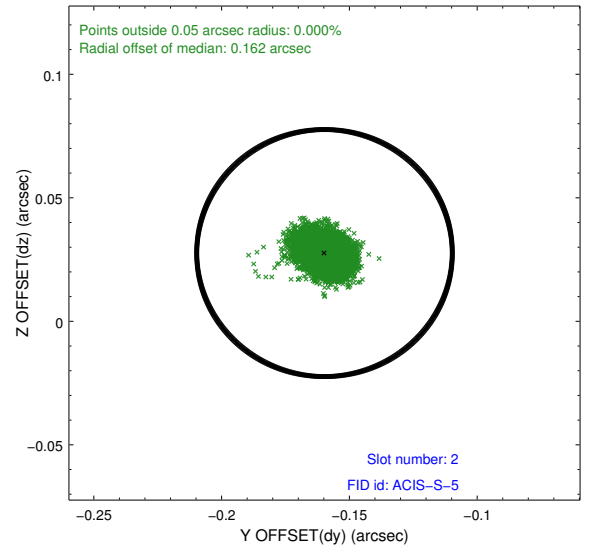
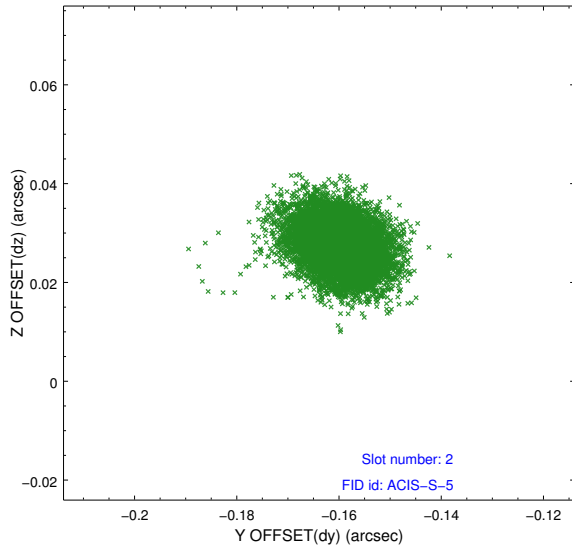
2.5.1 Slot 0



2.5.2 Slot 1



2.5.3 Slot 2



A Summary

A.1 Status

V&V Scientist	Beth Sundheim
V&V Date (YYYY-MM-DD)	2012.05.14
V&V Edition	1
V&V Disposition and Status	OK
V&V Charge Time	37.1783002

A.2 Comments