

V&V Reference Report

L2 ASCDS Version : 8.4.4

Observation 9540 - L2 Version 2
Chandra X-Ray Center

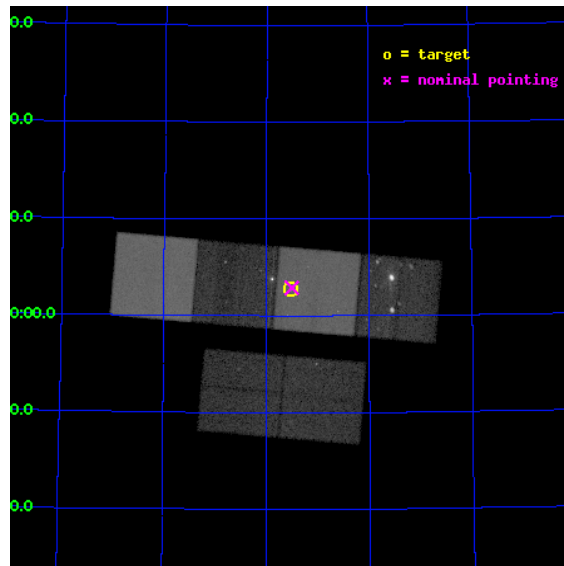
L2 Processing Date : May 19 2012

Contents

1	Front	2
2	OBI	3
2.1	OBI	3
2.1.1	Images	3
2.1.2	Bias	3
2.1.3	Parameters	4
2.1.4	Events	4
2.2	Compared Parameters	5
2.3	Aspect	6
2.4	Star Slots	9
2.4.1	Slot 3	9
2.4.2	Slot 4	10
2.4.3	Slot 5	11
2.4.4	Slot 6	12
2.4.5	Slot 7	13
2.5	FID Slots	14
2.5.1	Slot 0	14
2.5.2	Slot 1	15
2.5.3	Slot 2	16
A	Summary	17
A.1	Status	17
A.2	Comments	17

1 Front

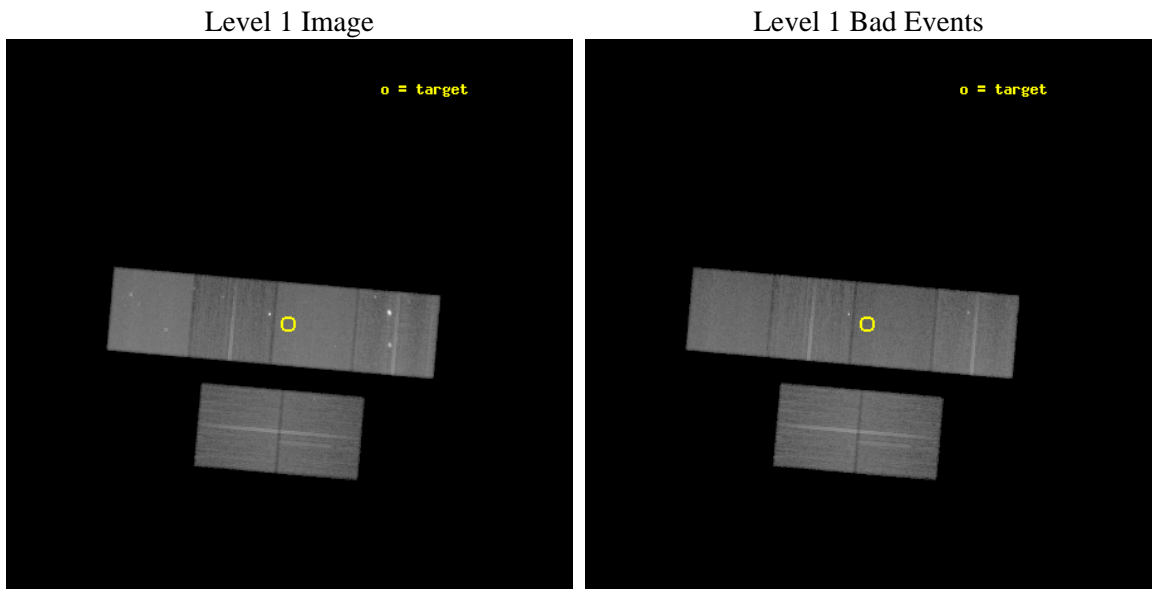
seq_num	600681	Sequence number
obs_id	9540	Observation id
title	Galaxies across the Octaves: A Chandra Legacy Survey of SINGS Galaxies	Proposal title
observer	Dr Leigh Jenkins	Principal investigator
object	Holmberg IX	Source name
dtycycle	0	
cycle	P	events from which exps? Prim/Second/Both
ra_targ	149.383333	Observer's specified target RA [deg]
dec_targ	69.045833	Observer's specified target Dec [deg]
ra_nom	149.37570762382	Nominal RA [deg]
dec_nom	69.048180315903	Nominal Dec [deg]
roll_nom	4.9284836630065	Nominal Roll [deg]
revision	2	Processing version of data
ontime	26054.399902999	Sum of GTIs [s]
livetime	25724.483403351	Livetime [s]
ontime2	26054.399902999	Sum of GTIs [s]
ontime3	26054.399902999	Sum of GTIs [s]
ontime5	26054.399902999	Sum of GTIs [s]
ontime6	26054.399902999	Sum of GTIs [s]
ontime7	26054.399902999	Sum of GTIs [s]
ontime8	26051.158932626	Sum of GTIs [s]
l2events	492489	Number of level 2 events



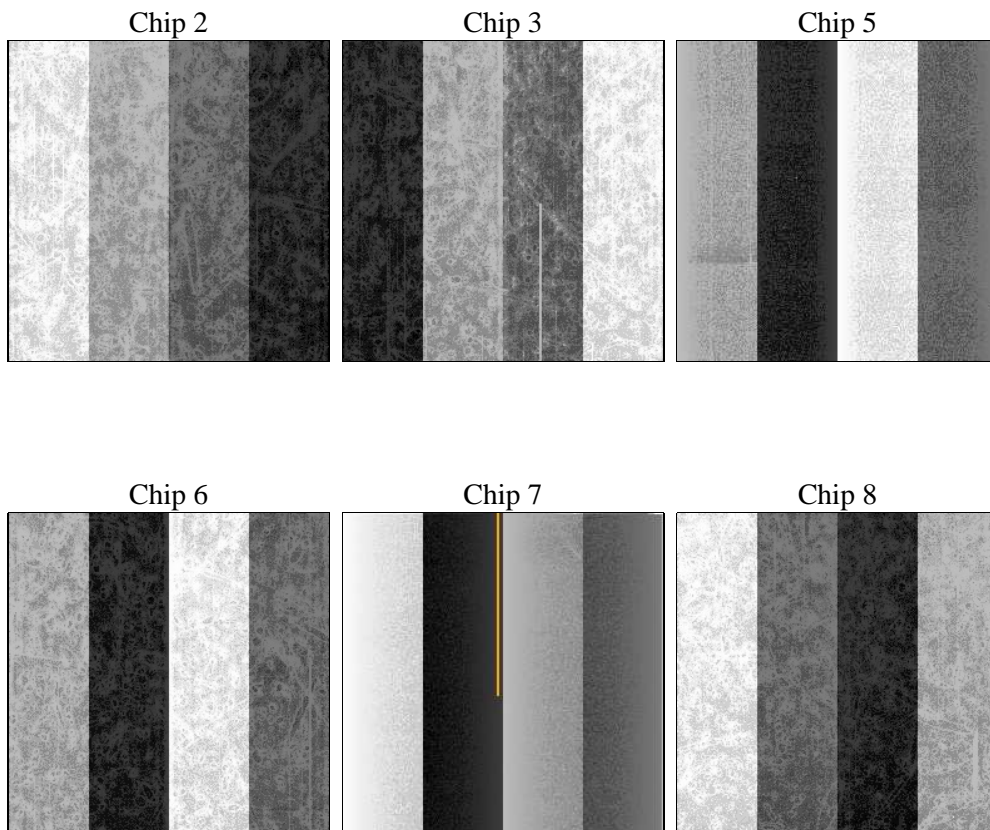
2 OBI

2.1 OBI

2.1.1 Images



2.1.2 Bias



2.1.3 Parameters

obi_num	0	Obi number	sched_exp_time	26300.000000	[s] Scheduled observation exposure time
ascdsver	8.4.4	Processing system revision	ontime	26054.399902999	Sum of GTIs [s]
caldbver	4.4.9	 	ontime2	26054.399902999	Sum of GTIs [s]
date	2012-05-19T22:00:00	Date and time of file creation	ontime3	26054.399902999	Sum of GTIs [s]
revision	2	Processing version of data	ontime5	26054.399902999	Sum of GTIs [s]
			ontime6	26054.399902999	Sum of GTIs [s]
			ontime7	26054.399902999	Sum of GTIs [s]
			ontime8	26051.158932626	Sum of GTIs [s]
			l1events	1936131	Number of level 1 events

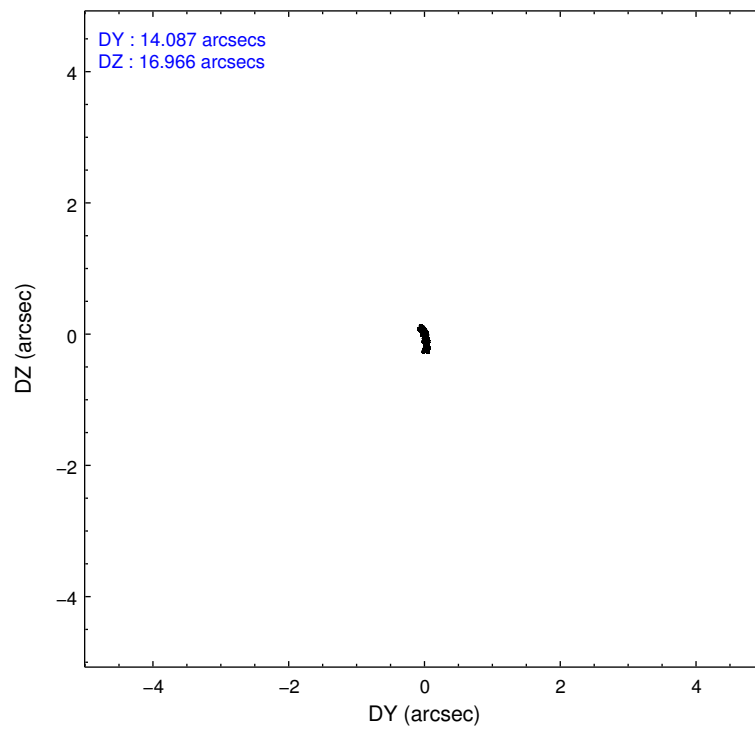
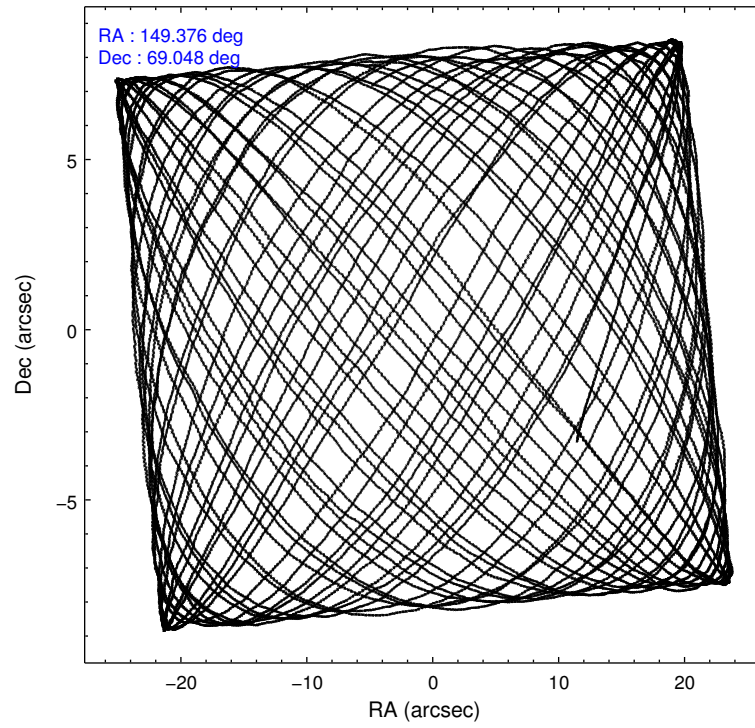
2.1.4 Events

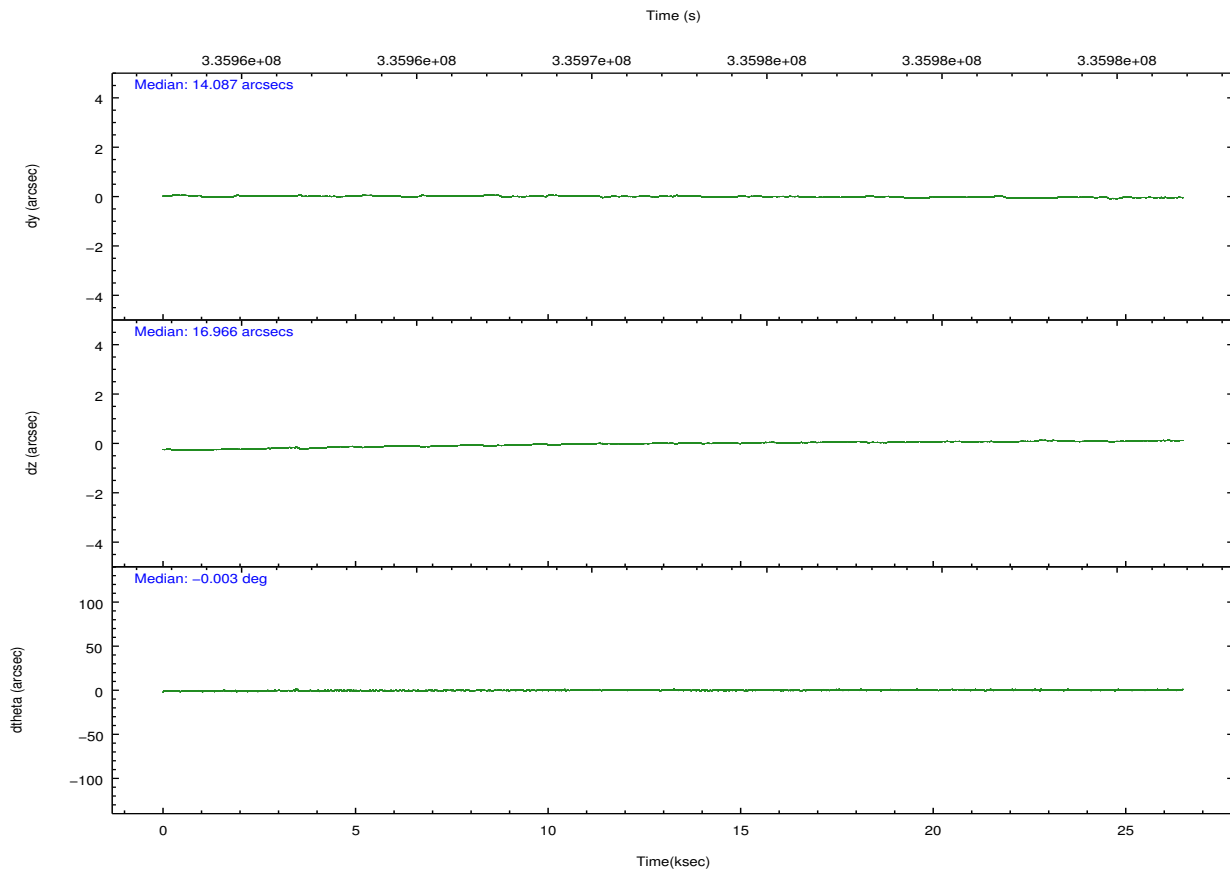
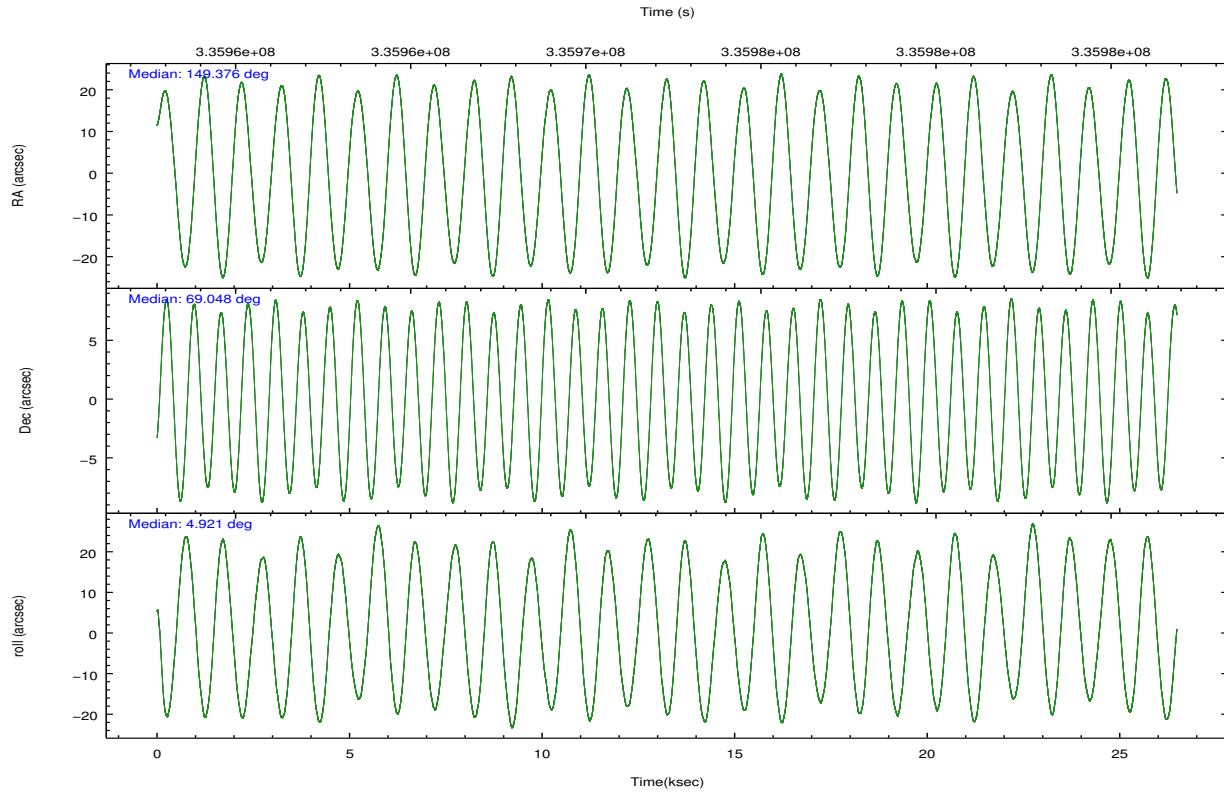
	ccd 2	ccd 3	ccd 5	ccd 6	ccd 7	ccd 8		ccd 2	ccd 3	ccd 5	ccd 6	ccd 7	ccd 8
level 1 events	264290	250346	399000	283578	362050	376867	grade 0 events	13760	13587	13093	20379	13221	58668
rejected events	232928	219352	216697	238093	210597	258140		5%	5%	3%	7%	3%	15%
rejected %	88%	87%	54%	83%	58%	68%	grade 1 events	173	210	615	2180	374	655
								0%	0%	0%	0%	0%	0%
							grade 2 events	6653	6079	56938	9240	31175	21360
								2%	2%	14%	3%	8%	5%
							grade 3 events	2795	2869	6857	3953	12760	9459
								1%	1%	1%	1%	3%	2%
							grade 4 events	2893	2914	6647	3829	12756	8643
								1%	1%	1%	1%	3%	2%
							grade 5 events	10439	11911	29055	14200	34072	16741
								3%	4%	7%	5%	9%	4%
							grade 6 events	5266	5547	98815	8095	81591	20621
								1%	2%	24%	2%	22%	5%
							grade 7 events	222311	207229	186980	221702	176101	240720
								84%	82%	46%	78%	48%	63%

2.2 Compared Parameters

Parameter	Planned	Actual	Parameter	Planned	Actual
Instrument	ACIS	ACIS	Obspar format version number	7	7
Detector	ACIS-235678	ACIS-235678	Obspar file type	PREDICTED	ACTUAL
Grating	NONE	NONE	Obspar update status	NONE	UPDATED
Data mode	FAINT	FAINT	CCD I0 on	N	N
Observation mode	POINTING	POINTING	CCD I1 on	N	N
[deg] Pointing RA	149.313595	149.3757076238158	CCD I2 on	O1	Y
[deg] Pointing Dec	69.032190	69.04818031590321	CCD I3 on	O2	Y
[deg] Pointing Roll	4.829860	4.928483663006519	CCD S0 on	N	N
[mm] SIM focus pos	-0.684267	-0.6828225247311905	CCD S1 on	Y	Y
[mm] SIM defocus	0	0.001444936568705701	CCD S2 on	Y	Y
[mm] SIM translation stage pos	-190.132523	-190.1400660498719	CCD S3 on	Y	Y
[mm] SIM translation stage offset	0	0.00754346686406393	CCD S4 on	Y	Y
[s] Observation start time (MET)	335959256.184000	335958701.58322	CCD S5 on	N	N
Observation start date	2008-08-24T09:59:51	2008-08-24T09:51:41	Number of optional ACIS chips dropped	0	0
[s] Observation end time (MET)	335985556.184000	335986552.37209	On-chip summing requested	N	N
Observation end date	2008-08-24T17:18:11	2008-08-24T17:35:52	Subarray requested	NONE	NONE
Read mode	TIMED	TIMED	Alternating exposures requested	N	N
			[s] Primary exposure time	0.000000	3.2

2.3 Aspect



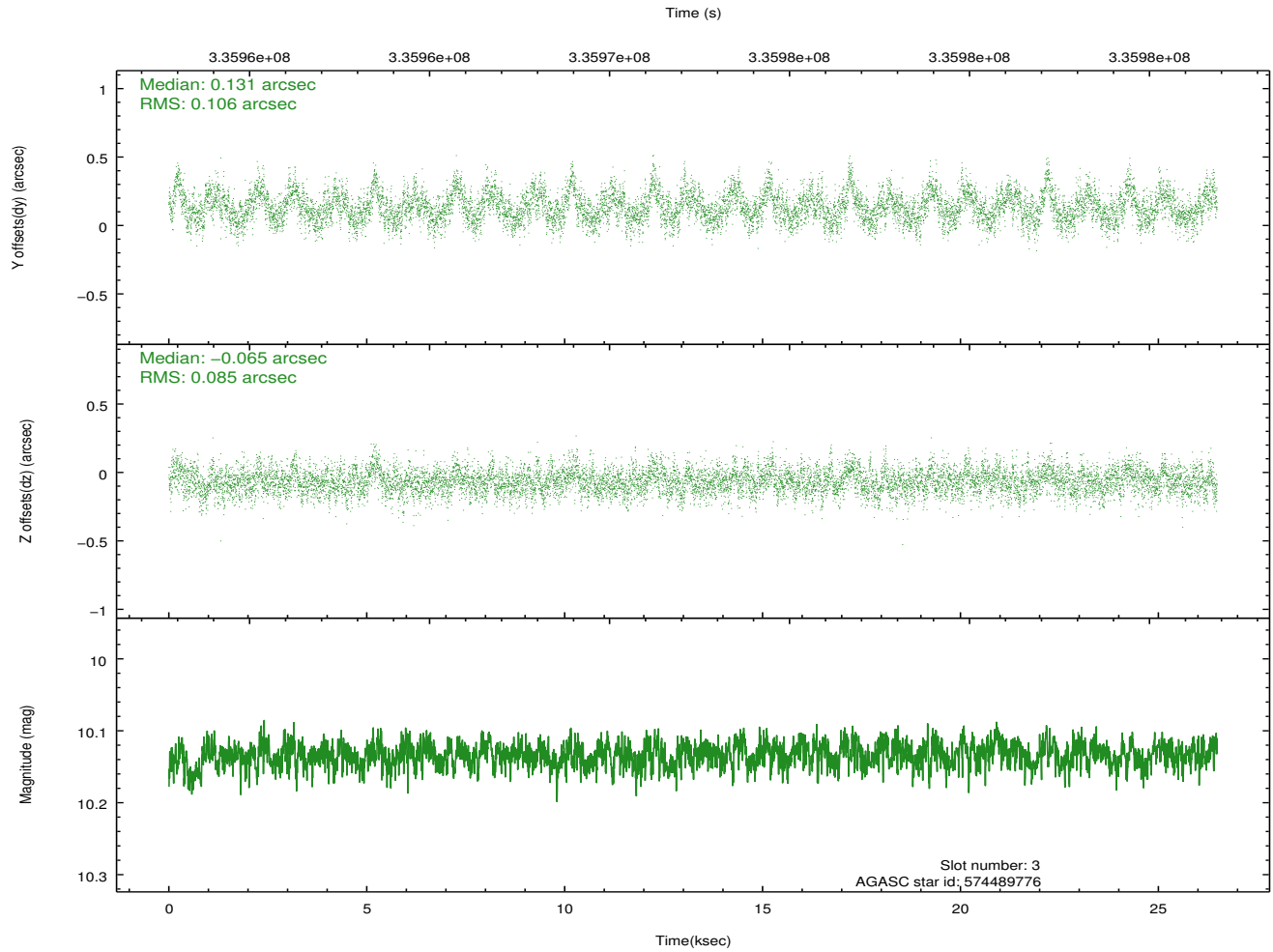
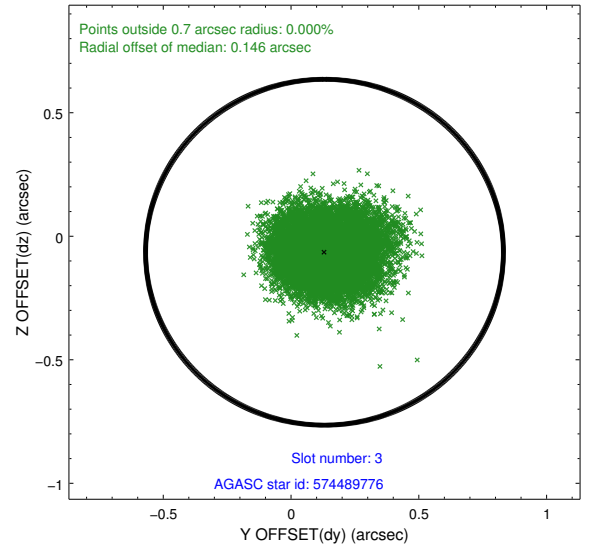
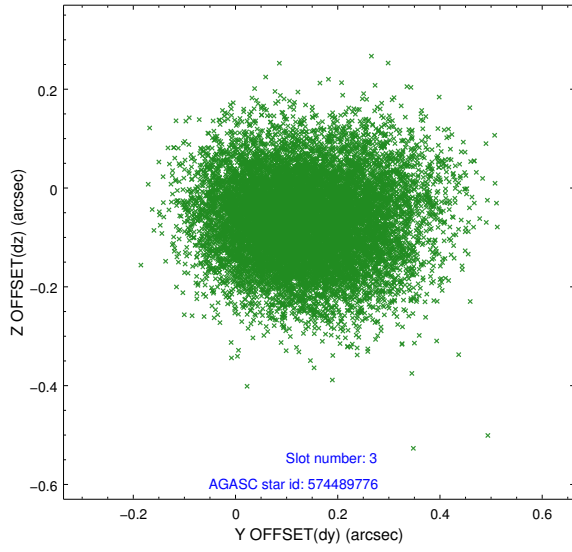


Slot Statistics

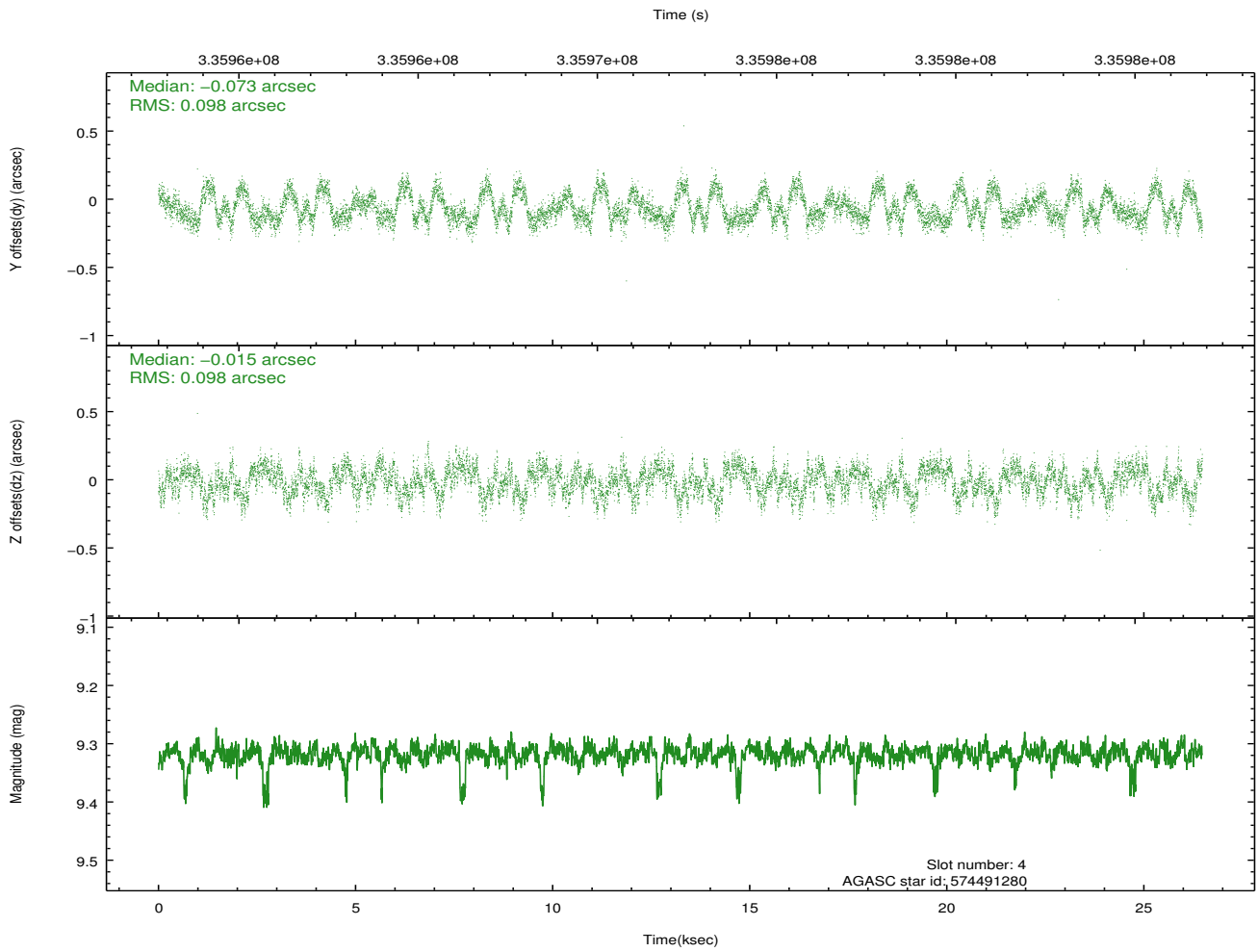
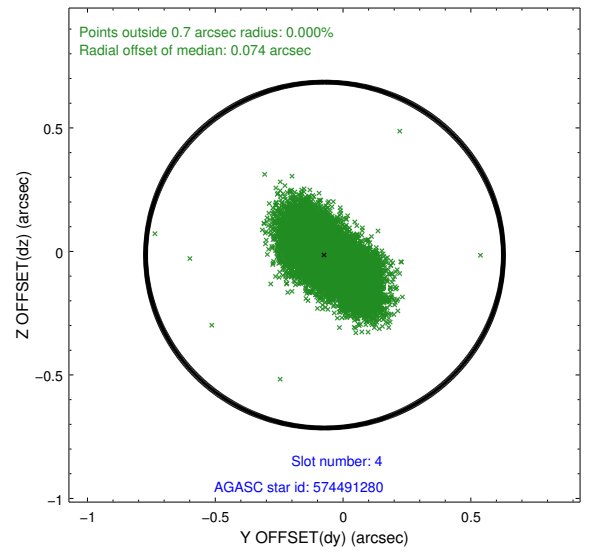
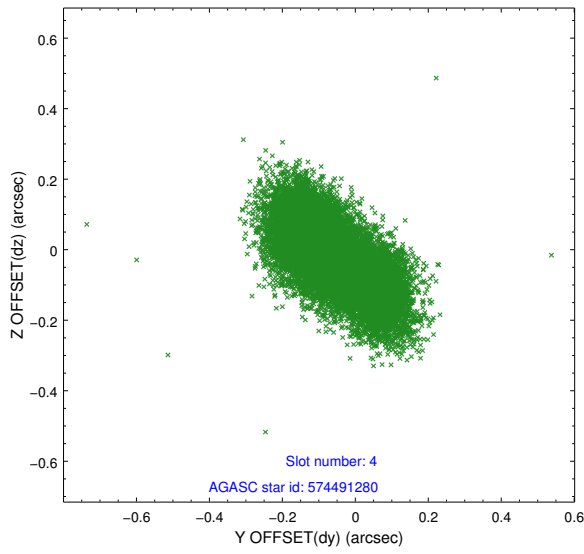
slot	status	id	mag	n_pts	med_dy	med_dz	dr1	dr2	ra	dec	mean_y	mean_z
0	FID	ACIS-S-2	6.87	6459	-0.043	-0.024	0.007	0.012	0.000000	0.000000	-767.10	-1738.38
1	FID	ACIS-S-4	6.95	6459	0.174	0.027	0.006	0.011	0.000000	0.000000	2146.38	170.00
2	FID	ACIS-S-5	6.99	6459	-0.162	0.005	0.007	0.012	0.000000	0.000000	-1819.90	163.83
3	GUIDE	574489776	10.13	12893	0.131	-0.065	0.144	0.234	148.323662	69.046710	-1264.12	169.62
4	GUIDE	574491280	9.32	12903	-0.073	-0.015	0.147	0.242	148.611567	69.450135	-758.04	1578.36
5	GUIDE	574496360	9.45	12873	-0.183	0.105	0.134	0.209	150.806604	68.529829	1810.26	-1943.27
6	GUIDE	574497600	10.47	12891	0.091	0.185	0.203	0.332	147.824120	68.451903	-2135.68	-1892.21
7	GUIDE	574490960	9.75	12897	0.011	-0.192	0.132	0.211	148.185918	69.658768	-1215.47	2378.93

2.4 Star Slots

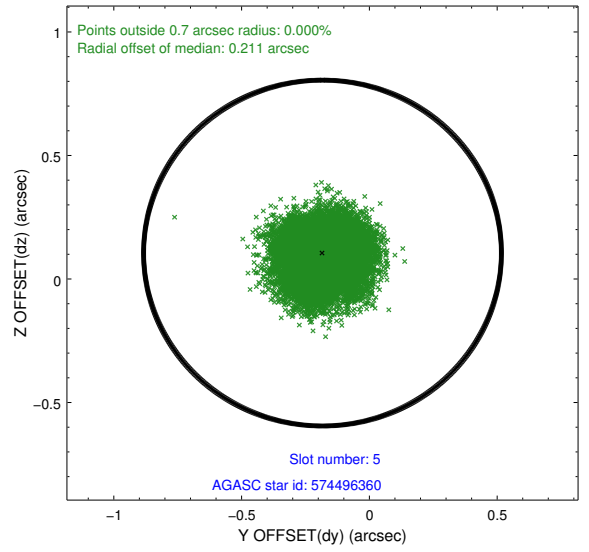
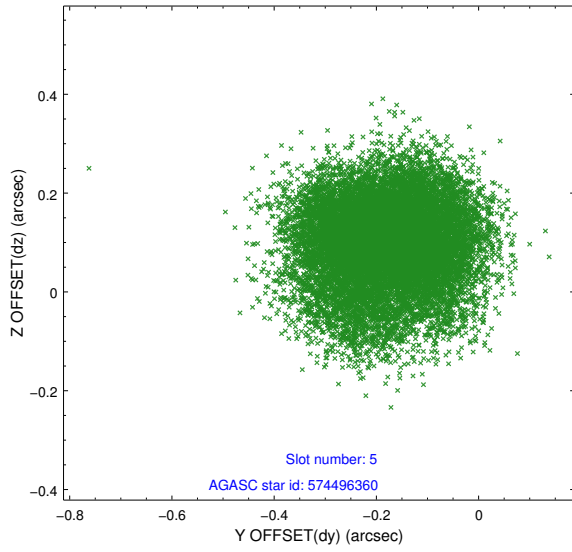
2.4.1 Slot 3



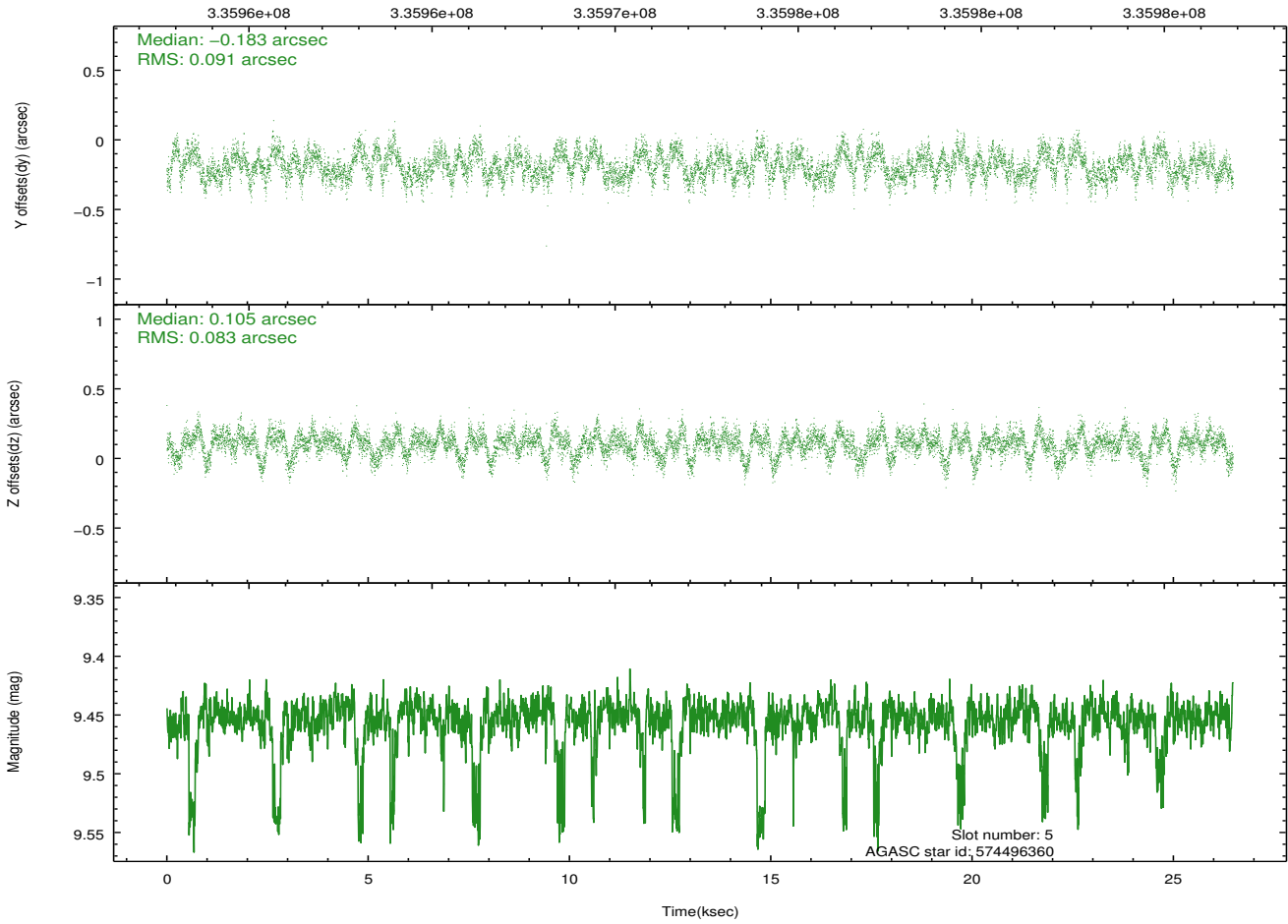
2.4.2 Slot 4



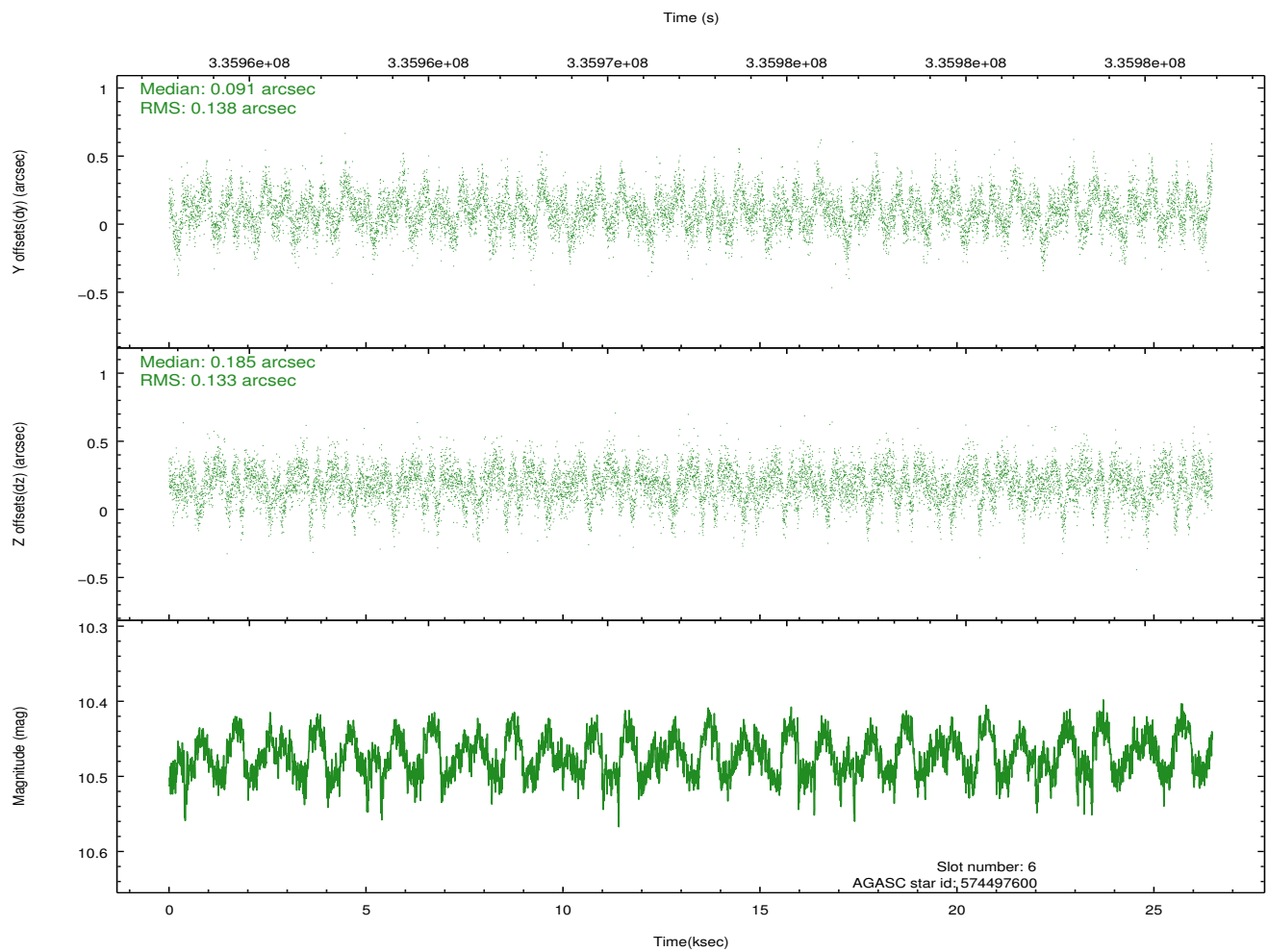
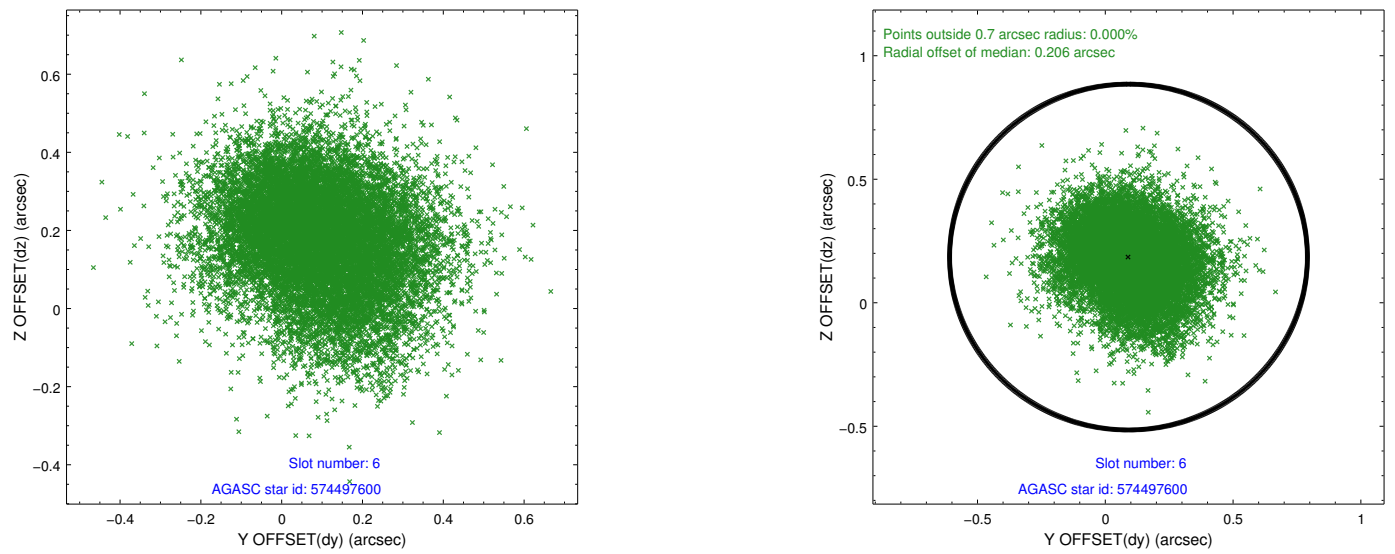
2.4.3 Slot 5



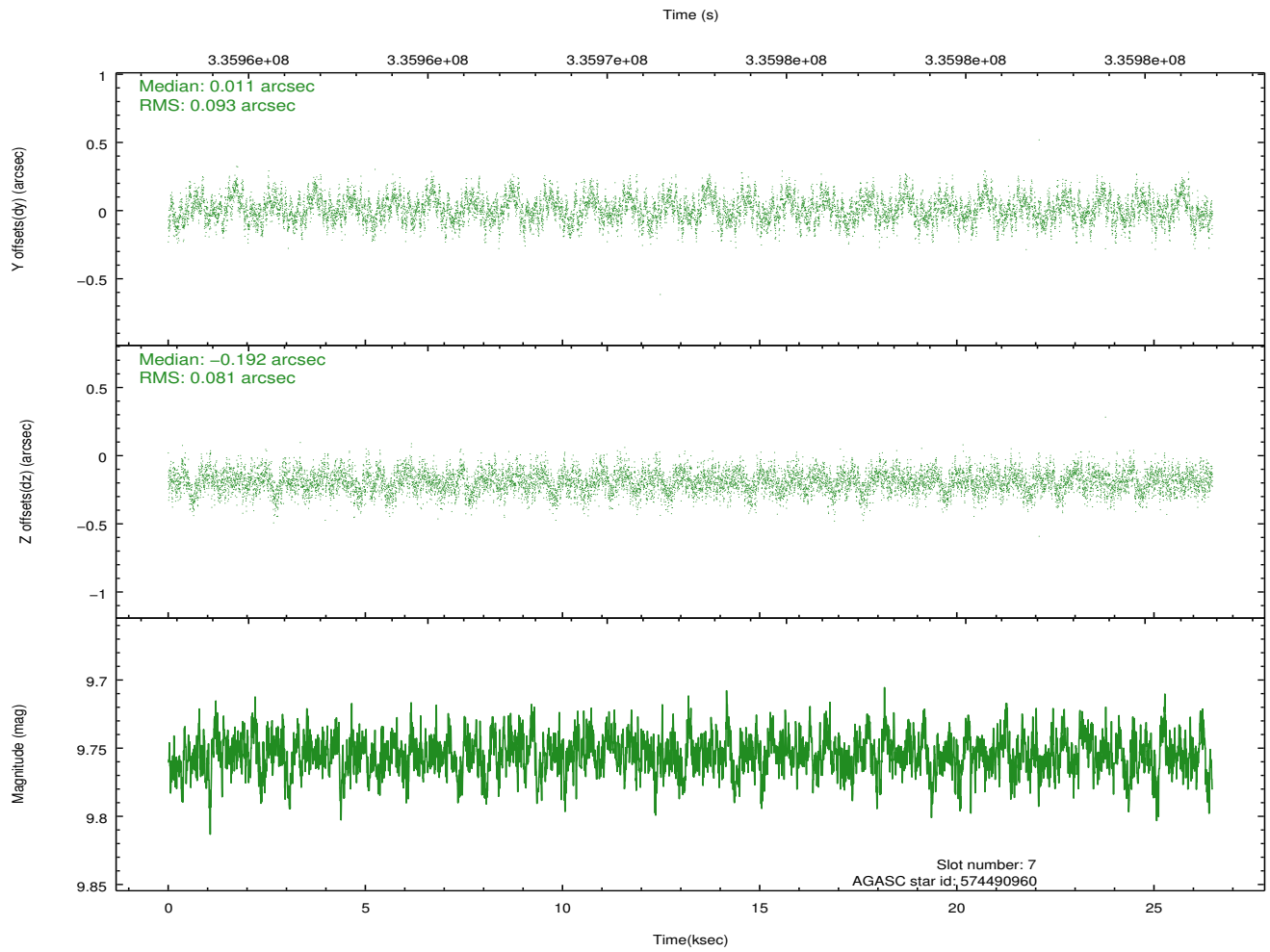
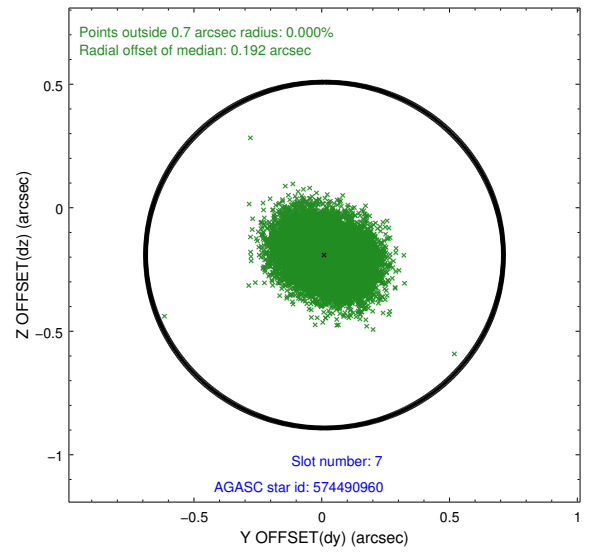
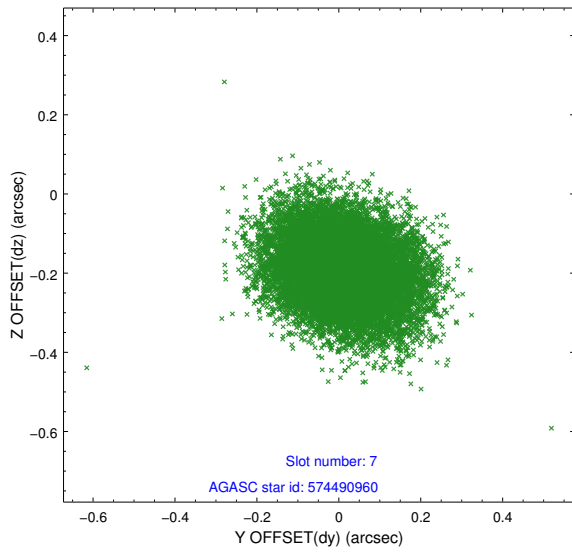
Time (s)



2.4.4 Slot 6

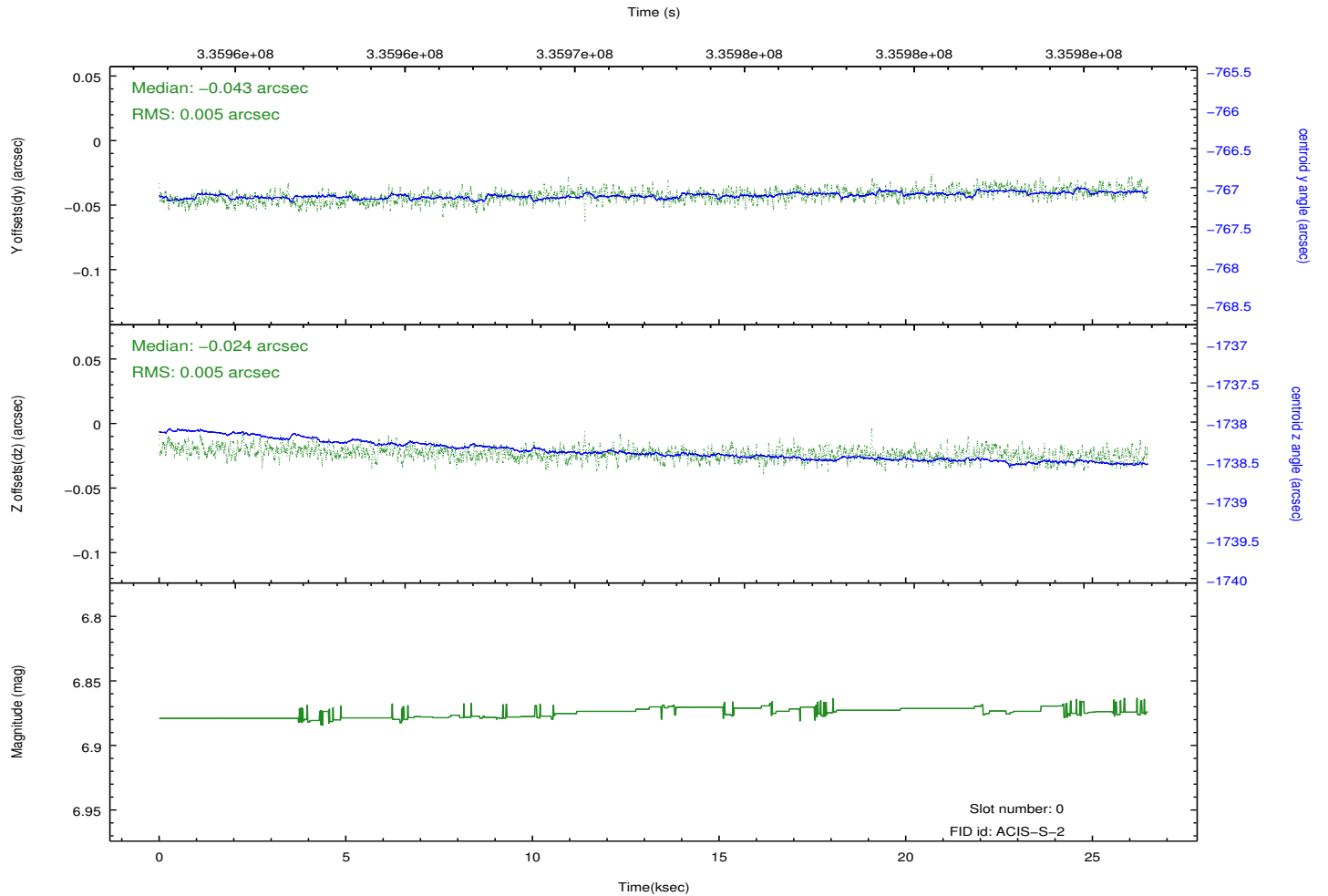
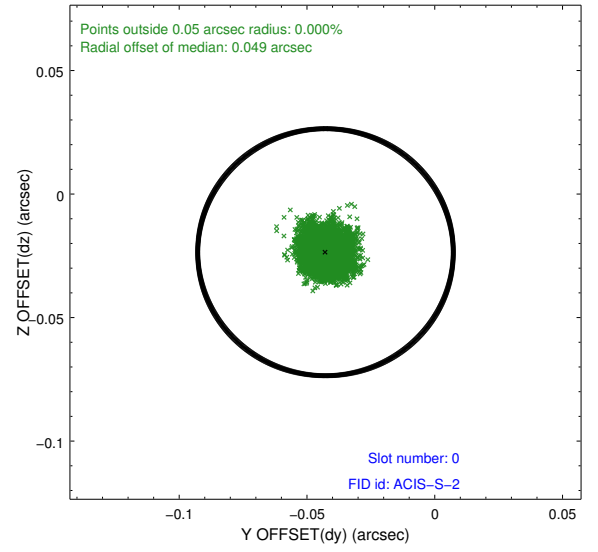
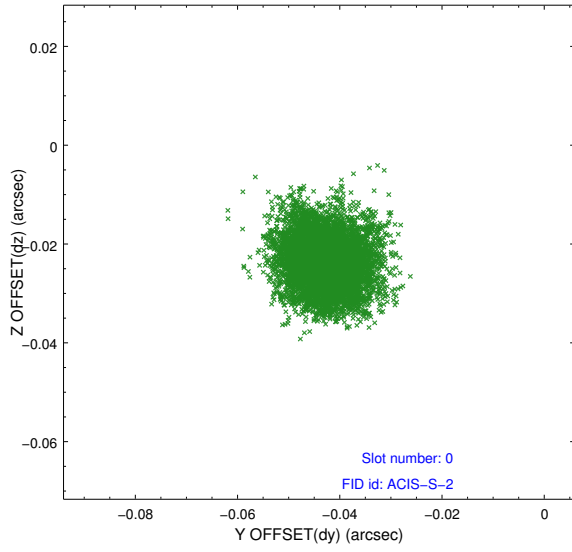


2.4.5 Slot 7

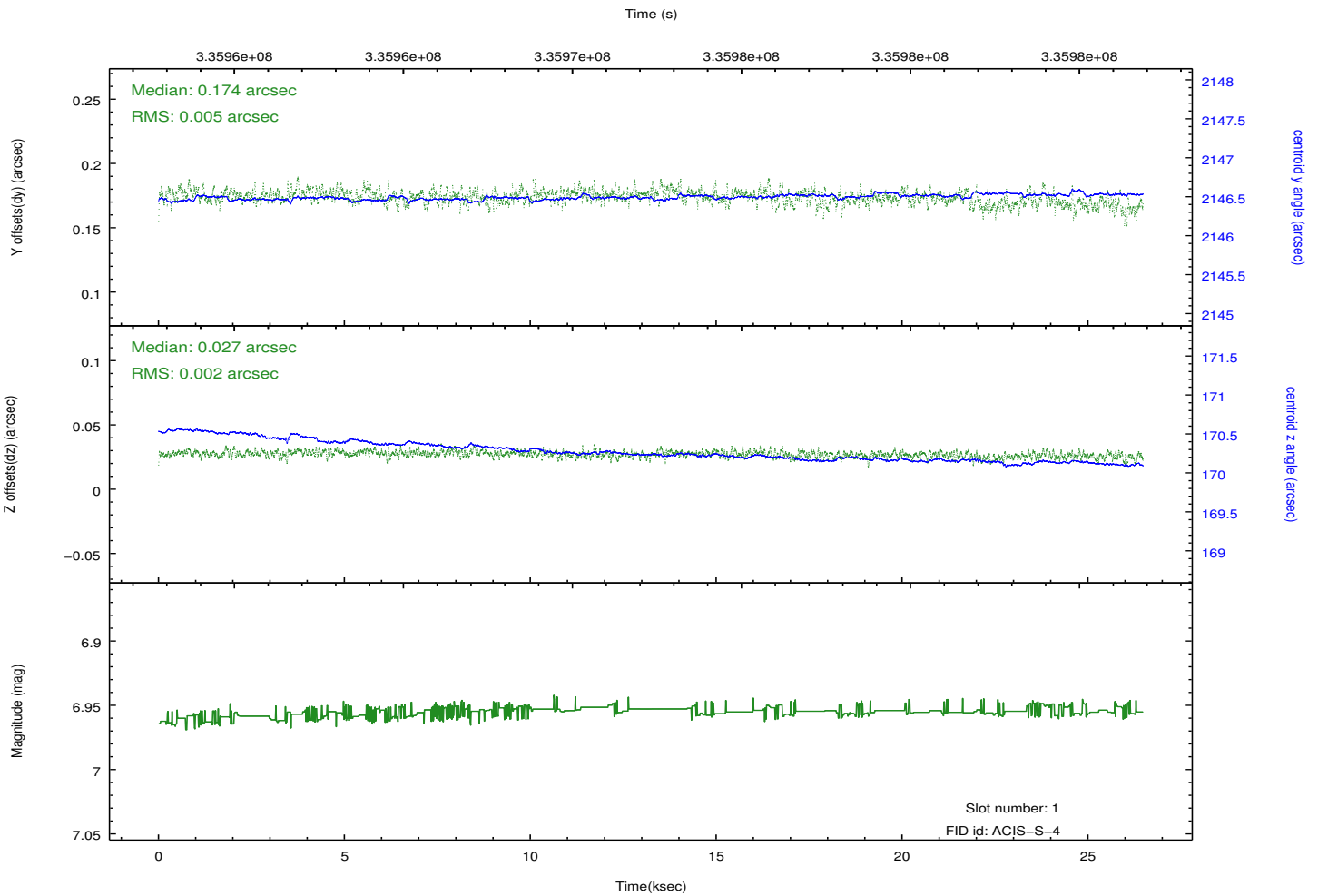
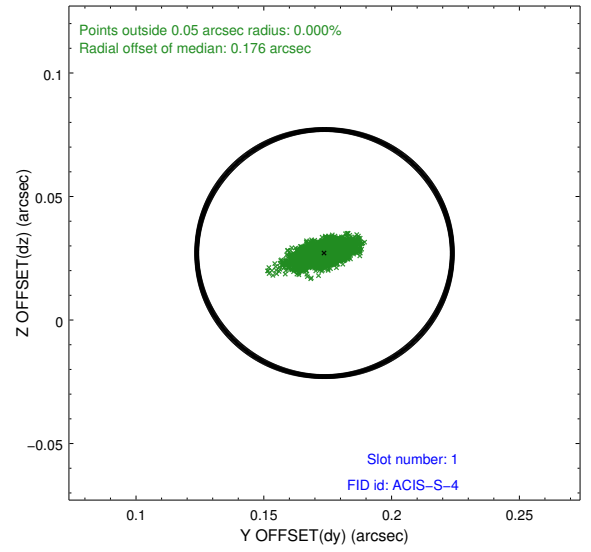
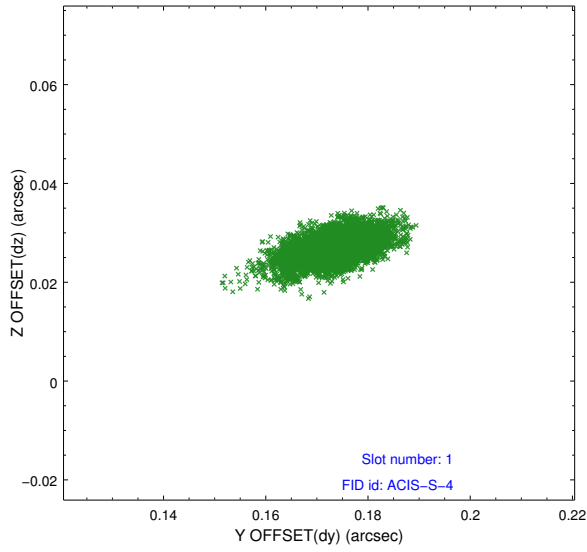


2.5 FID Slots

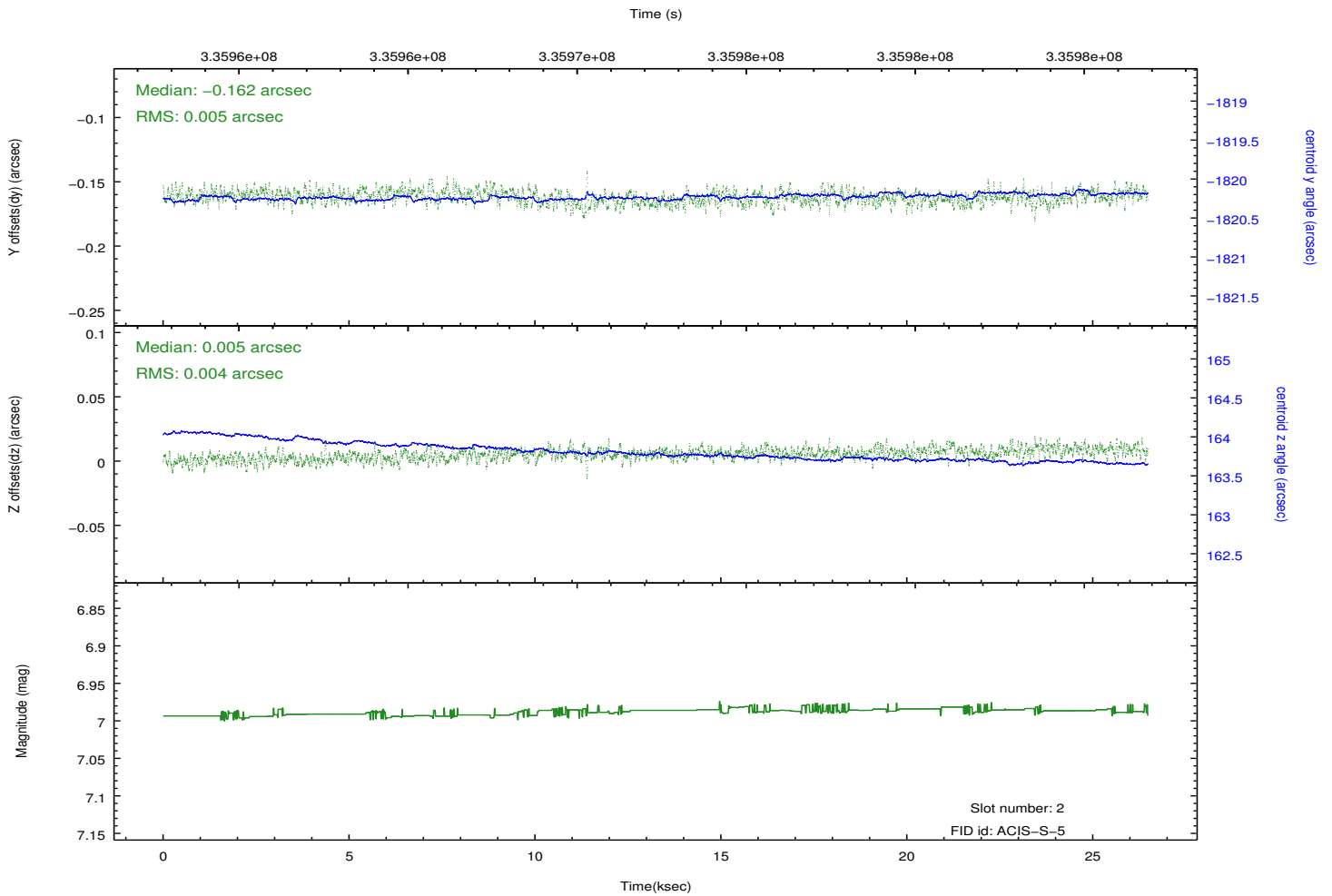
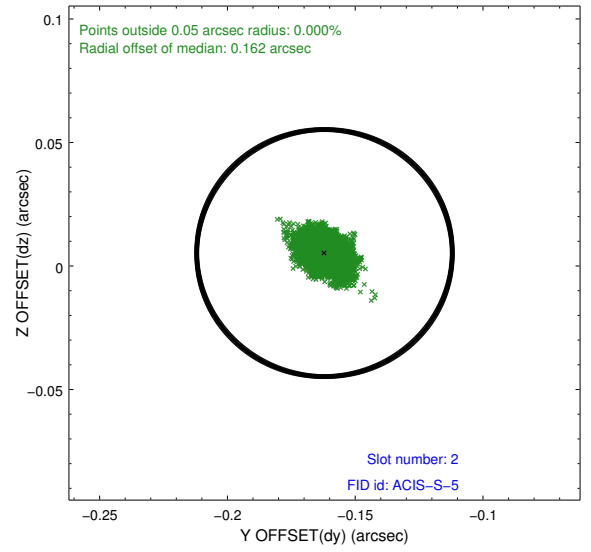
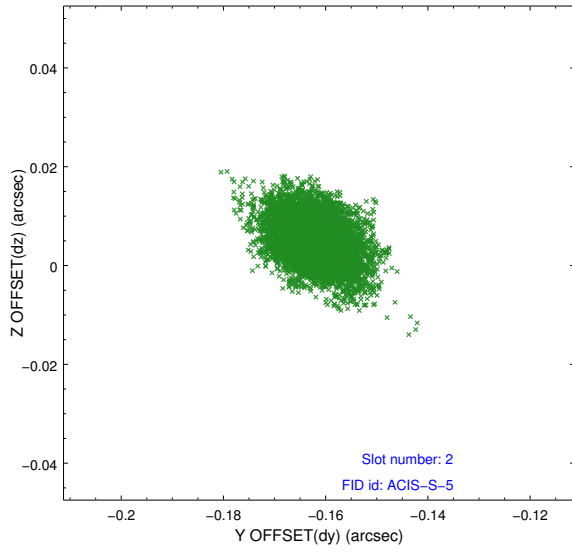
2.5.1 Slot 0



2.5.2 Slot 1



2.5.3 Slot 2



A Summary

A.1 Status

V&V Scientist	Beth Sundheim
V&V Date (YYYY-MM-DD)	2012.05.29
V&V Edition	1
V&V Disposition and Status	OK
V&V Charge Time	26.0543999

A.2 Comments