

# V&V Reference Report

## L2 ASCDS Version : 8.4.4

Observation 9560 - L2 Version 2  
Chandra X-Ray Center

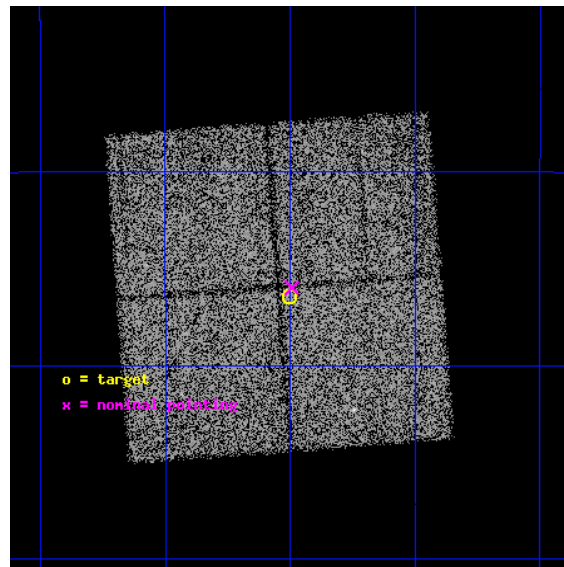
L2 Processing Date : May 13 2012

## Contents

<b>1</b>	<b>Front</b>	<b>2</b>
<b>2</b>	<b>OBI</b>	<b>3</b>
2.1	OBI . . . . .	3
2.1.1	Images . . . . .	3
2.1.2	Bias . . . . .	3
2.1.3	Parameters . . . . .	4
2.1.4	Events . . . . .	4
2.2	Compared Parameters . . . . .	5
2.3	Aspect . . . . .	6
2.4	Star Slots . . . . .	9
2.4.1	Slot 3 . . . . .	9
2.4.2	Slot 4 . . . . .	10
2.4.3	Slot 5 . . . . .	11
2.4.4	Slot 6 . . . . .	12
2.4.5	Slot 7 . . . . .	13
2.5	FID Slots . . . . .	14
2.5.1	Slot 0 . . . . .	14
2.5.2	Slot 1 . . . . .	15
2.5.3	Slot 2 . . . . .	16
<b>A</b>	<b>Summary</b>	<b>17</b>
A.1	Status . . . . .	17
A.2	Comments . . . . .	17

# 1 Front

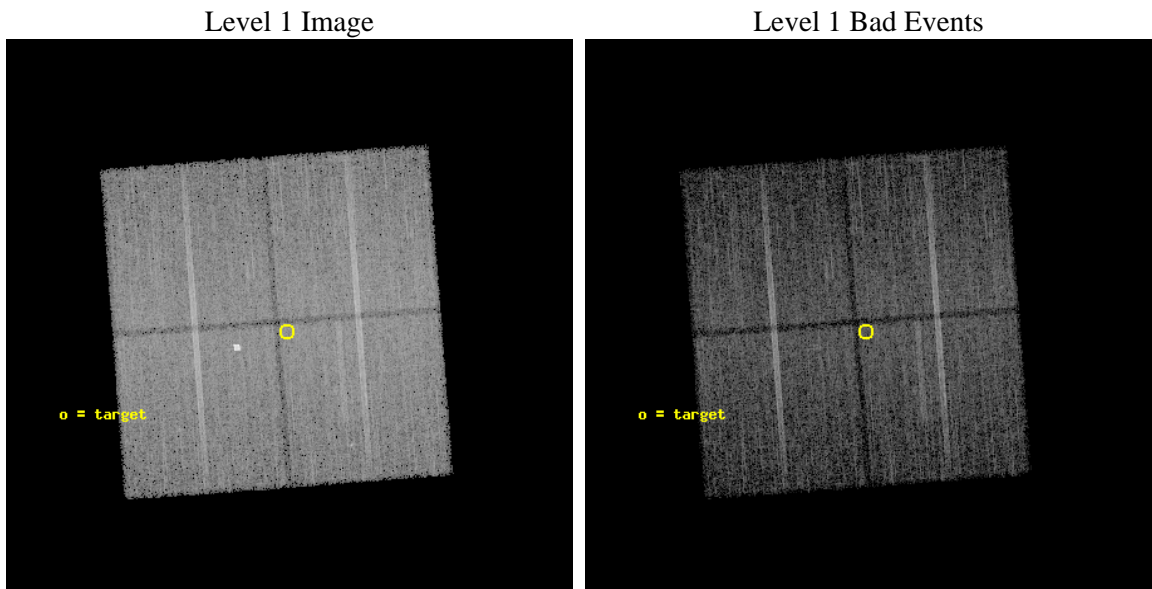
seq_num	600701	Sequence number
obs_id	9560	Observation id
title	Galactic Bulge Latitude Survey -3	Proposal title
observer	Professor Johnathan Grindlay	Principal investigator
object	GBW14	Source name
dtcycle	0	&#160
cycle	P	events from which exps? Prim/Second/Both
ra_targ	266.875417	Observer's specified target RA [deg]
dec_targ	-29.441139	Observer's specified target Dec [deg]
ra_nom	266.87332986752	Nominal RA [deg]
dec_nom	-29.433237659322	Nominal Dec [deg]
roll_nom	85.707665636339	Nominal Roll [deg]
revision	2	Processing version of data
ontime	14814.90011394	Sum of GTIs [s]
livetime	14621.332537381	Livetime [s]
ontime0	14799.195122361	Sum of GTIs [s]
ontime1	14814.90011394	Sum of GTIs [s]
ontime2	14811.759103715	Sum of GTIs [s]
ontime3	14814.90011394	Sum of GTIs [s]
l2events	68705	Number of level 2 events



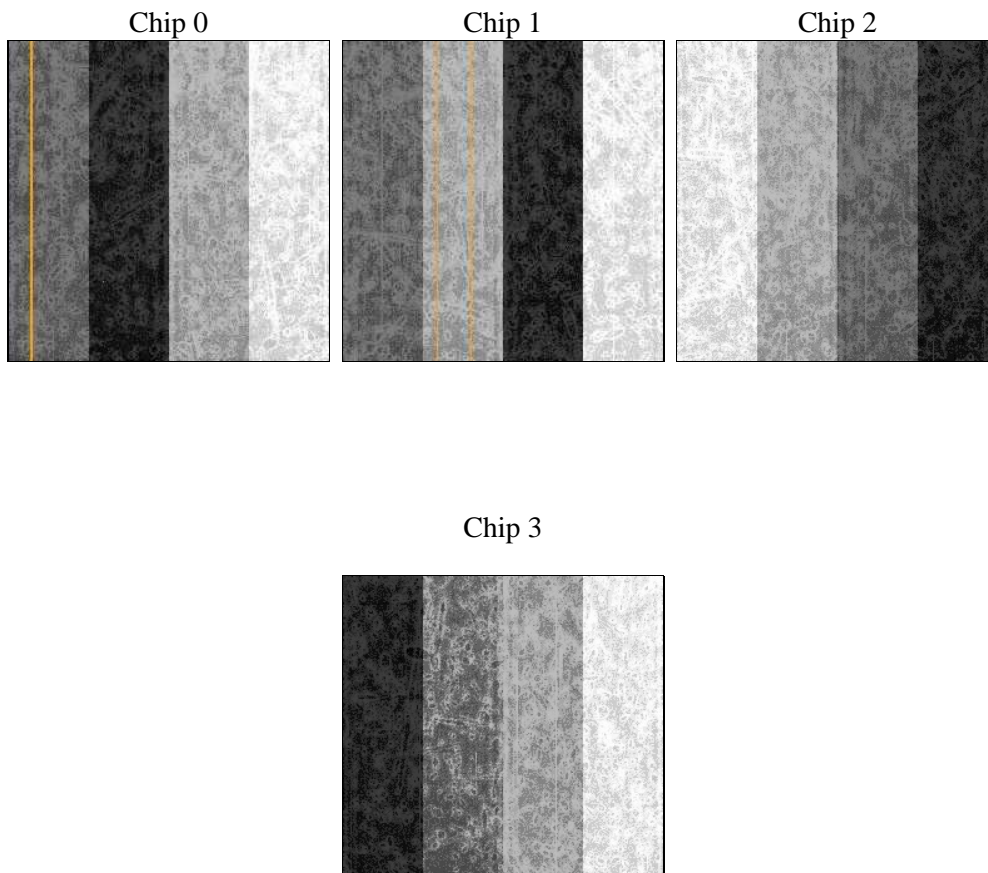
## 2 OBI

### 2.1 OBI

#### 2.1.1 Images



#### 2.1.2 Bias



### 2.1.3 Parameters

obi_num	0	Obi number	sched_exp_time	14755.000000	[s] Scheduled observation exposure time
ascdsver	8.4.4	Processing system revision	ontime	14814.90011394	Sum of GTIs [s]
caldsver	4.4.9	&#160	ontime0	14799.195122361	Sum of GTIs [s]
date	2012-05-14T01:14:05	Date and time of file creation	ontime1	14814.90011394	Sum of GTIs [s]
revision	2	Processing version of data	ontime2	14811.759103715	Sum of GTIs [s]
			ontime3	14814.90011394	Sum of GTIs [s]
			l1events	543430	Number of level 1 events

### 2.1.4 Events

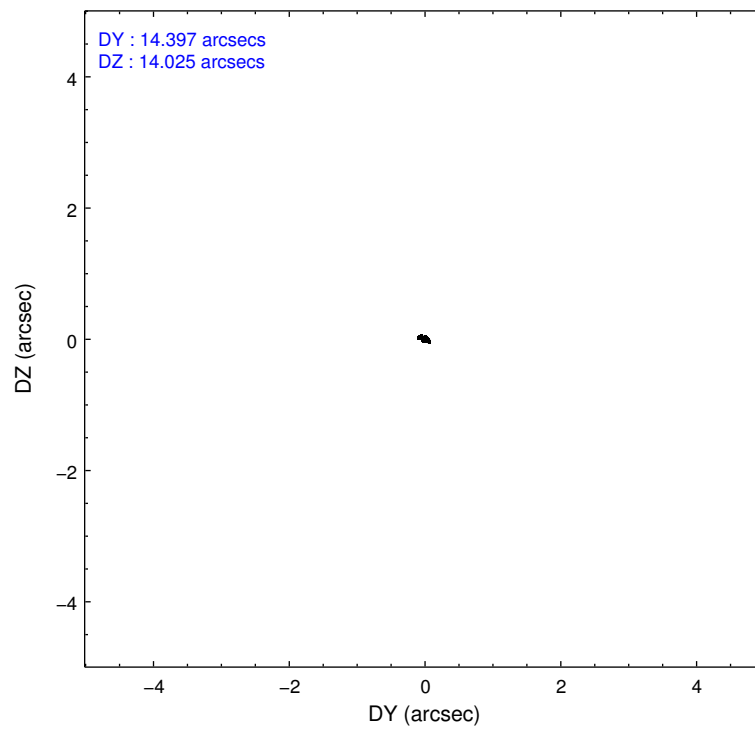
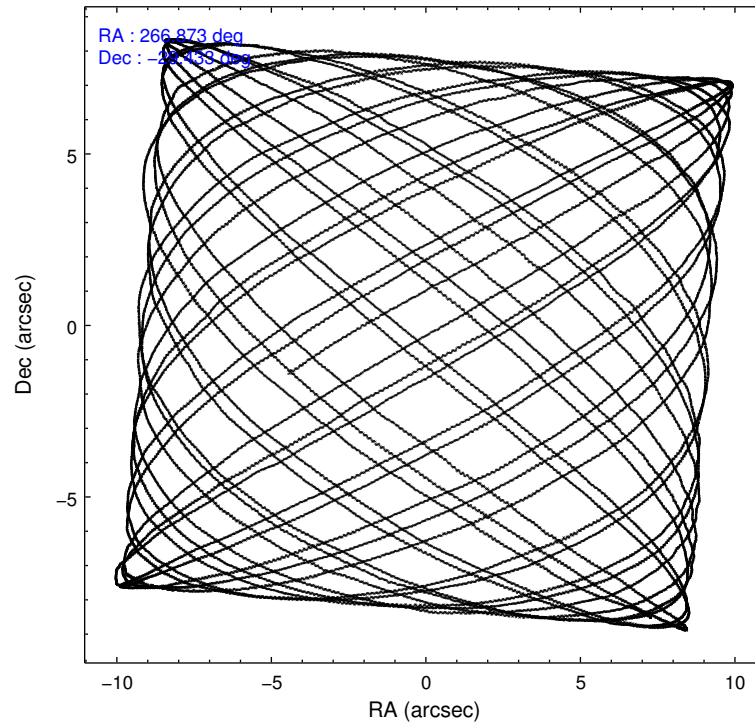
	ccd 0	ccd 1	ccd 2	ccd 3
level 1 events	128567	135252	140685	138926
rejected events	108492	110406	121635	119303
rejected %	84%	81%	86%	85%

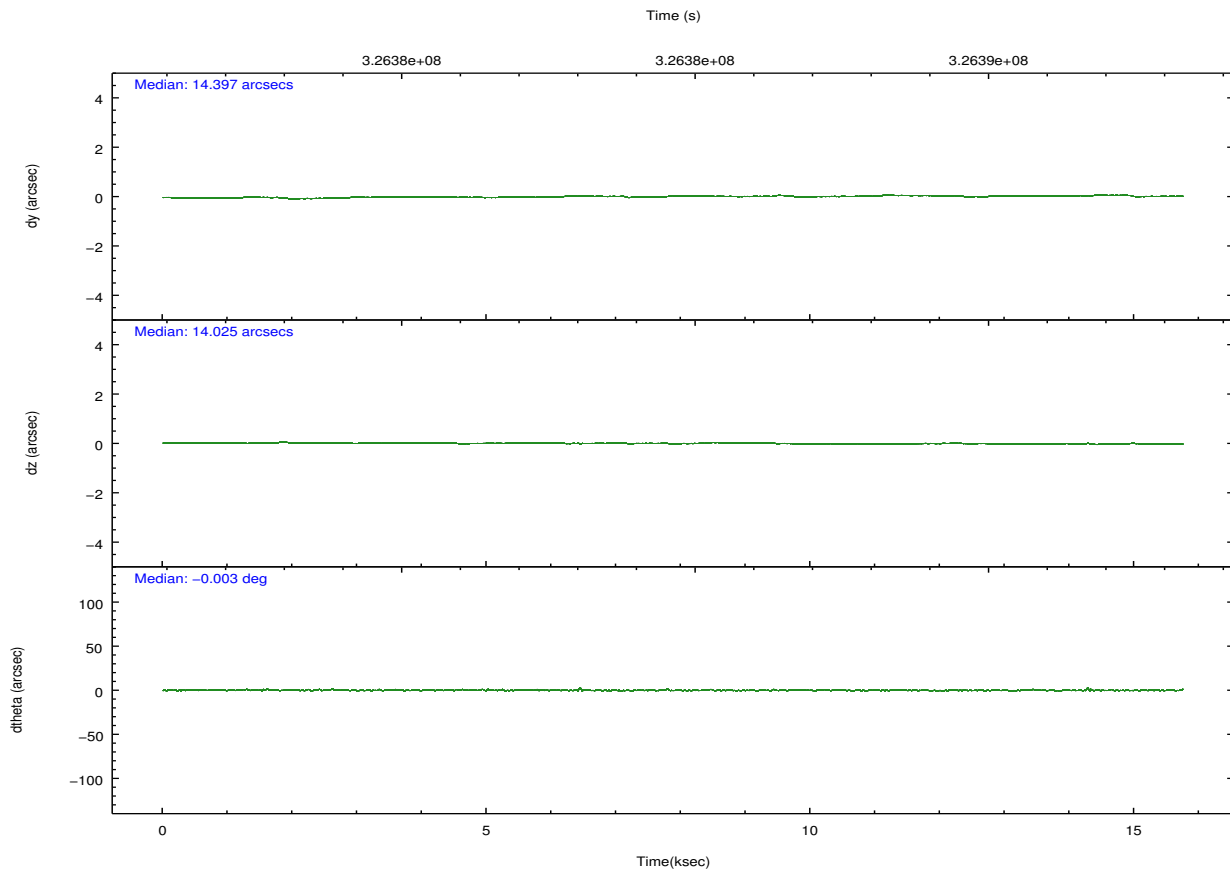
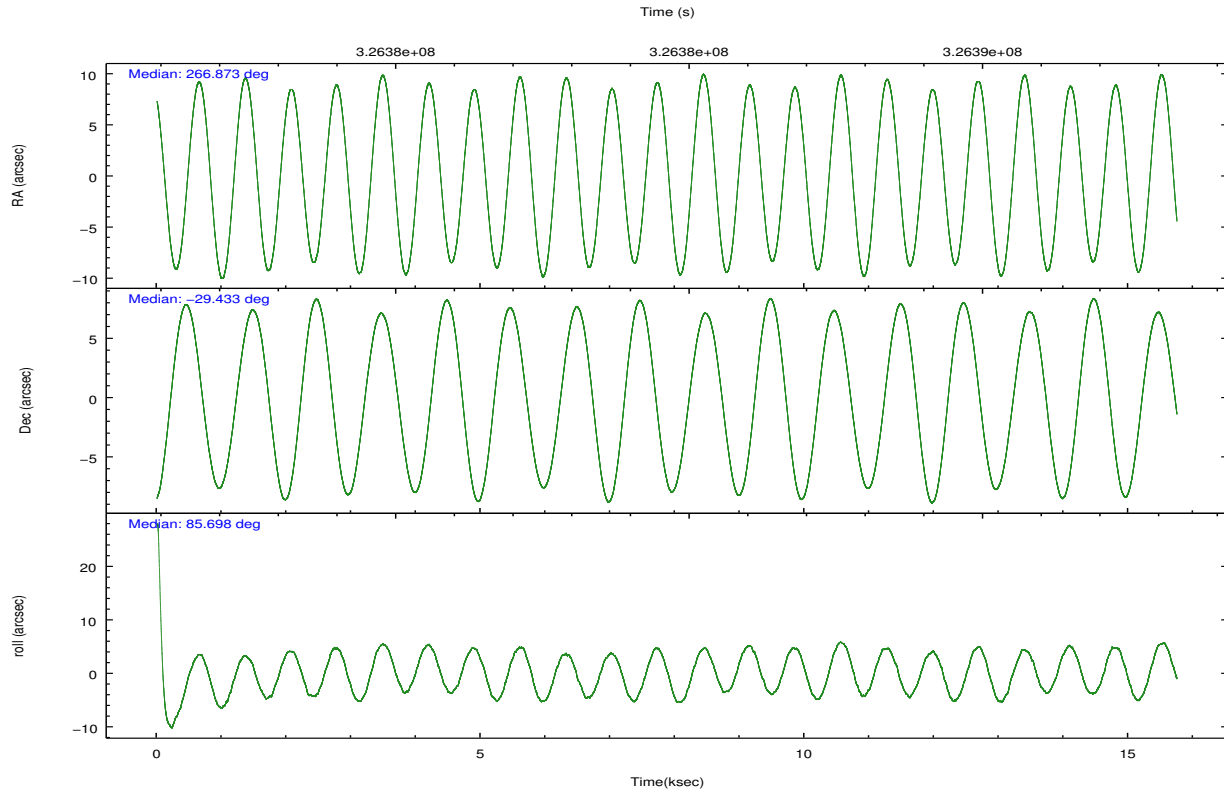
	ccd 0	ccd 1	ccd 2	ccd 3
grade 0 events	9557	13141	9192	9398
	7%	9%	6%	6%
grade 1 events	96	110	103	110
	0%	0%	0%	0%
grade 2 events	4138	4571	3815	3597
	3%	3%	2%	2%
grade 3 events	1677	1753	1533	1726
	1%	1%	1%	1%
grade 4 events	1638	1735	1661	1699
	1%	1%	1%	1%
grade 5 events	5727	6292	5809	6506
	4%	4%	4%	4%
grade 6 events	3070	3655	2851	3206
	2%	2%	2%	2%
grade 7 events	102664	103995	115721	112684
	79%	76%	82%	81%

## 2.2 Compared Parameters

Parameter	Planned	Actual	Parameter	Planned	Actual
Instrument	ACIS	ACIS	Obspar format version number	7	7
Detector	ACIS-0123	ACIS-0123	Obspar file type	PREDICTED	ACTUAL
Grating	NONE	NONE	Obspar update status	NONE	UPDATED
Data mode	VFAINT	VFAINT	Number of optional ACIS chips dropped	0	0
Observation mode	POINTING	POINTING	On-chip summing requested	N	N
[deg] Pointing RA	266.887146	266.8733298675223	Subarray requested	NONE	NONE
[deg] Pointing Dec	-29.457991	-29.43323765932168	Alternating exposures requested	N	N
[deg] Pointing Roll	85.505769	85.70766563633933	[s] Primary exposure time	0.000000	3.1
[mm] SIM focus pos	-0.782348	-0.7809083437167272			
[mm] SIM defocus	0	0.001439871863259334			
[mm] SIM translation stage pos	-233.592463	-233.5874344608287			
[mm] SIM translation stage offset	0	-0.005018542100998502			
[s] Observation start time (MET)	326377744.184000	326376469.36725			
Observation start date	2008-05-05T12:27:59	2008-05-05T12:07:49			
[s] Observation end time (MET)	326392499.184000	326392633.61803			
Observation end date	2008-05-05T16:33:54	2008-05-05T16:37:13			
Read mode	TIMED	TIMED			

## 2.3 Aspect



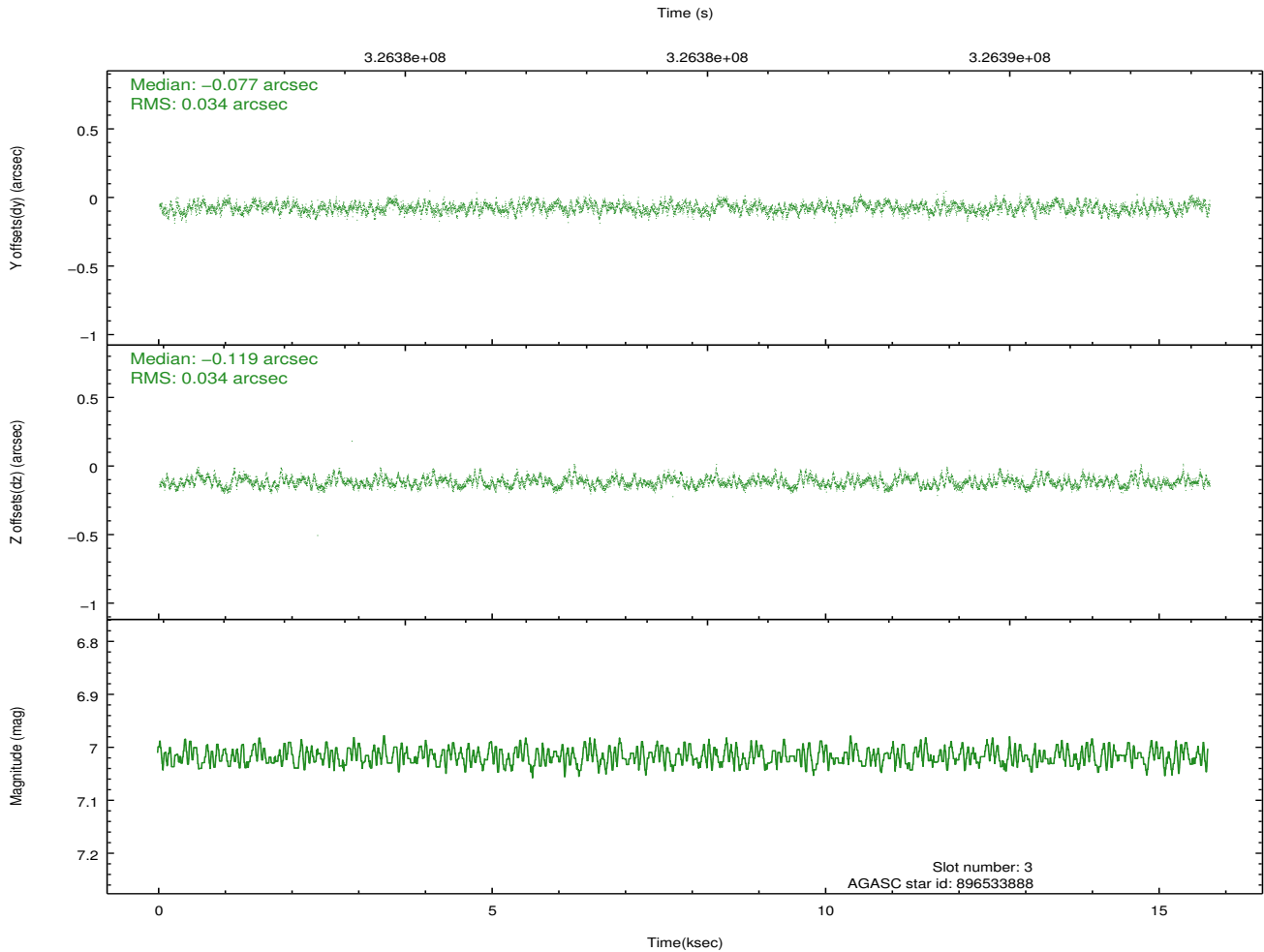
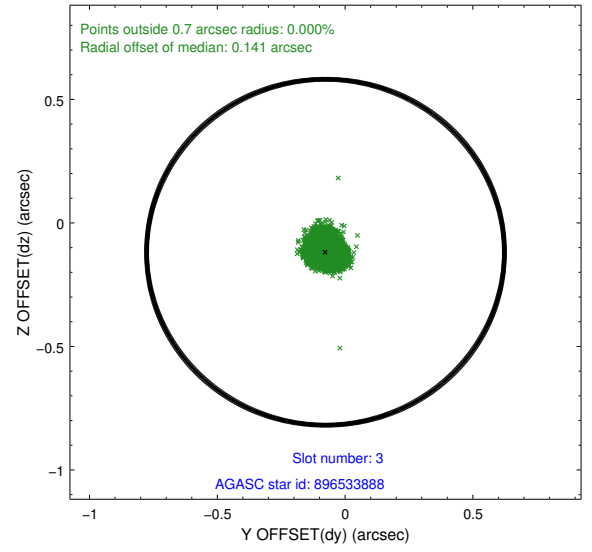
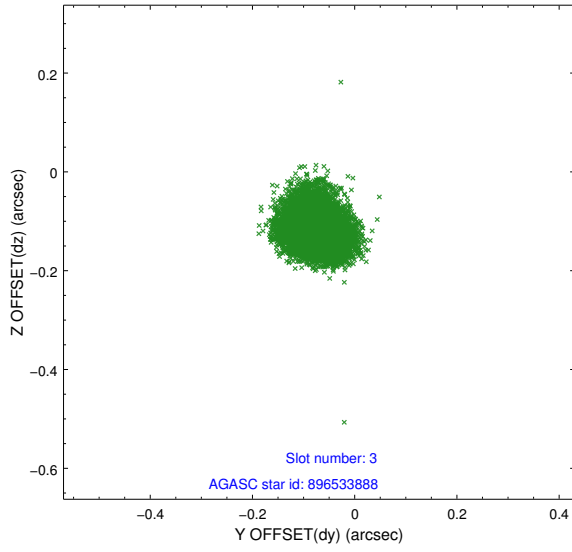


### Slot Statistics

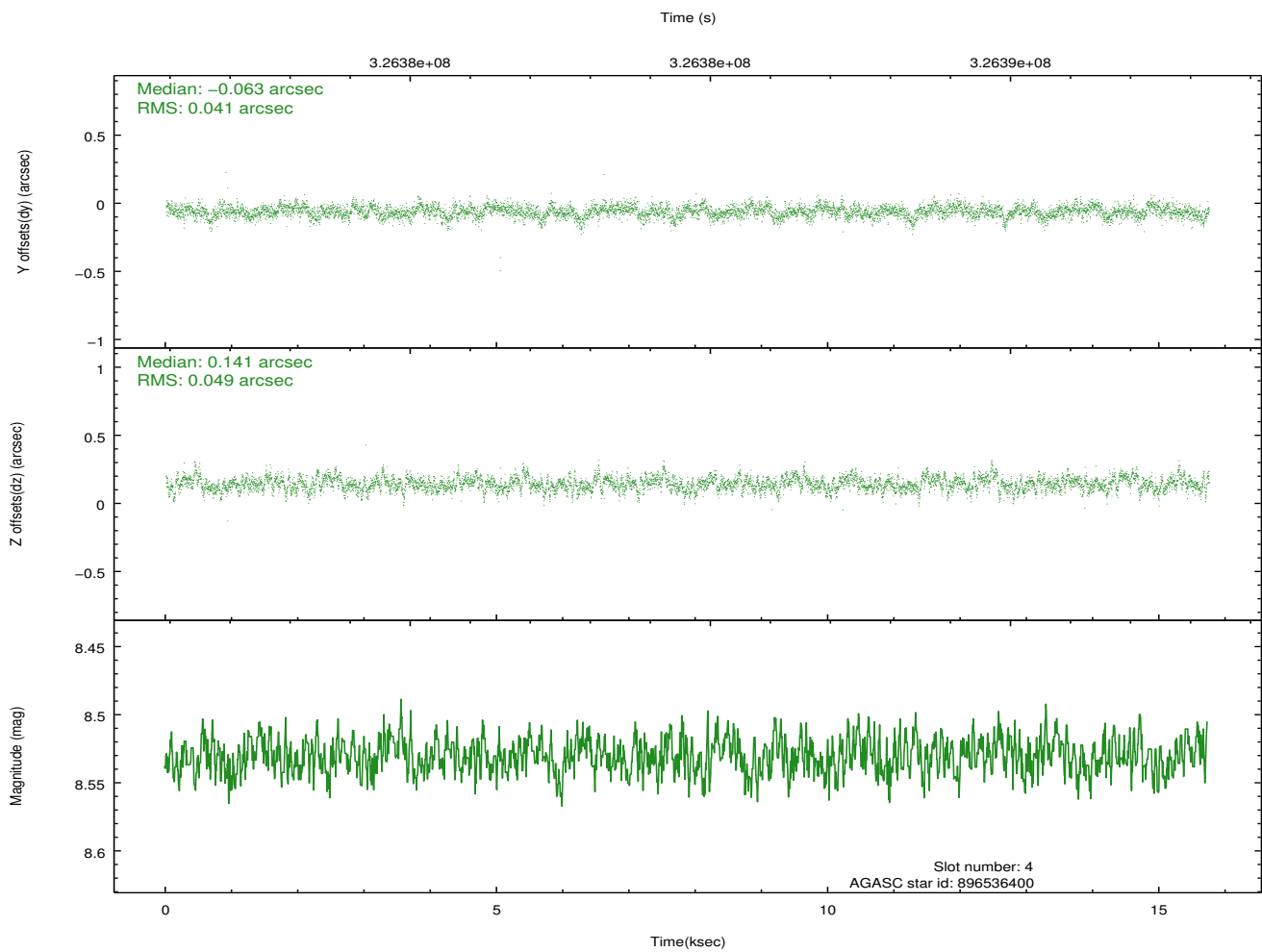
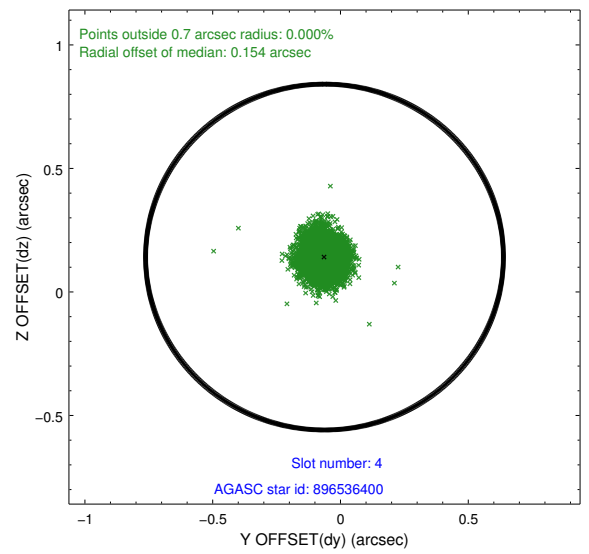
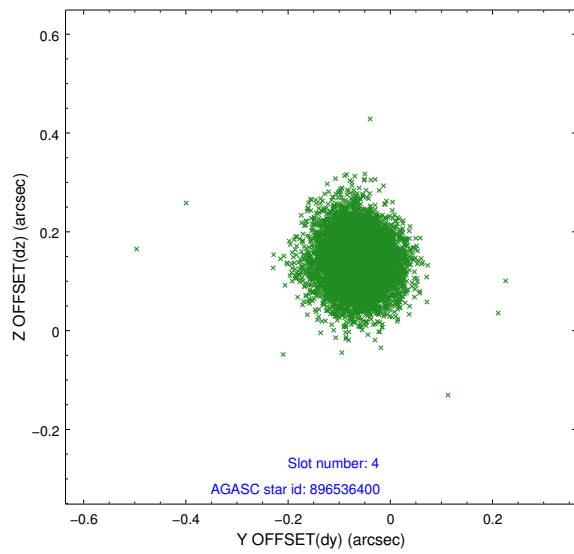
slot	status	id	mag	n_pts	med_dy	med_dz	dr1	dr2	ra	dec	mean_y	mean_z
0	FID	ACIS-I-1	7.06	3841	0.007	0.050	0.006	0.011	0.000000	0.000000	925.10	-837.54
1	FID	ACIS-I-5	7.05	3840	-0.188	0.028	0.006	0.010	0.000000	0.000000	-1823.07	1059.75
2	FID	ACIS-I-6	7.06	3841	0.089	-0.008	0.007	0.011	0.000000	0.000000	390.39	1704.57
3	GUIDE	896533888	7.02	7683	-0.077	-0.119	0.052	0.080	266.666434	-29.392757	179.10	708.47
4	GUIDE	896536400	8.53	7680	-0.063	0.141	0.067	0.111	267.359146	-29.438655	182.65	-1469.72
5	GUIDE	896538920	8.89	7675	-0.082	-0.061	0.079	0.126	266.278728	-29.143592	973.20	1995.41
6	GUIDE	896540528	8.25	7677	-0.010	0.175	0.069	0.115	267.368305	-29.314773	629.59	-1465.34
7	GUIDE	896541168	8.14	7682	0.228	-0.143	0.073	0.116	266.319970	-29.850801	-1552.89	1653.96

## 2.4 Star Slots

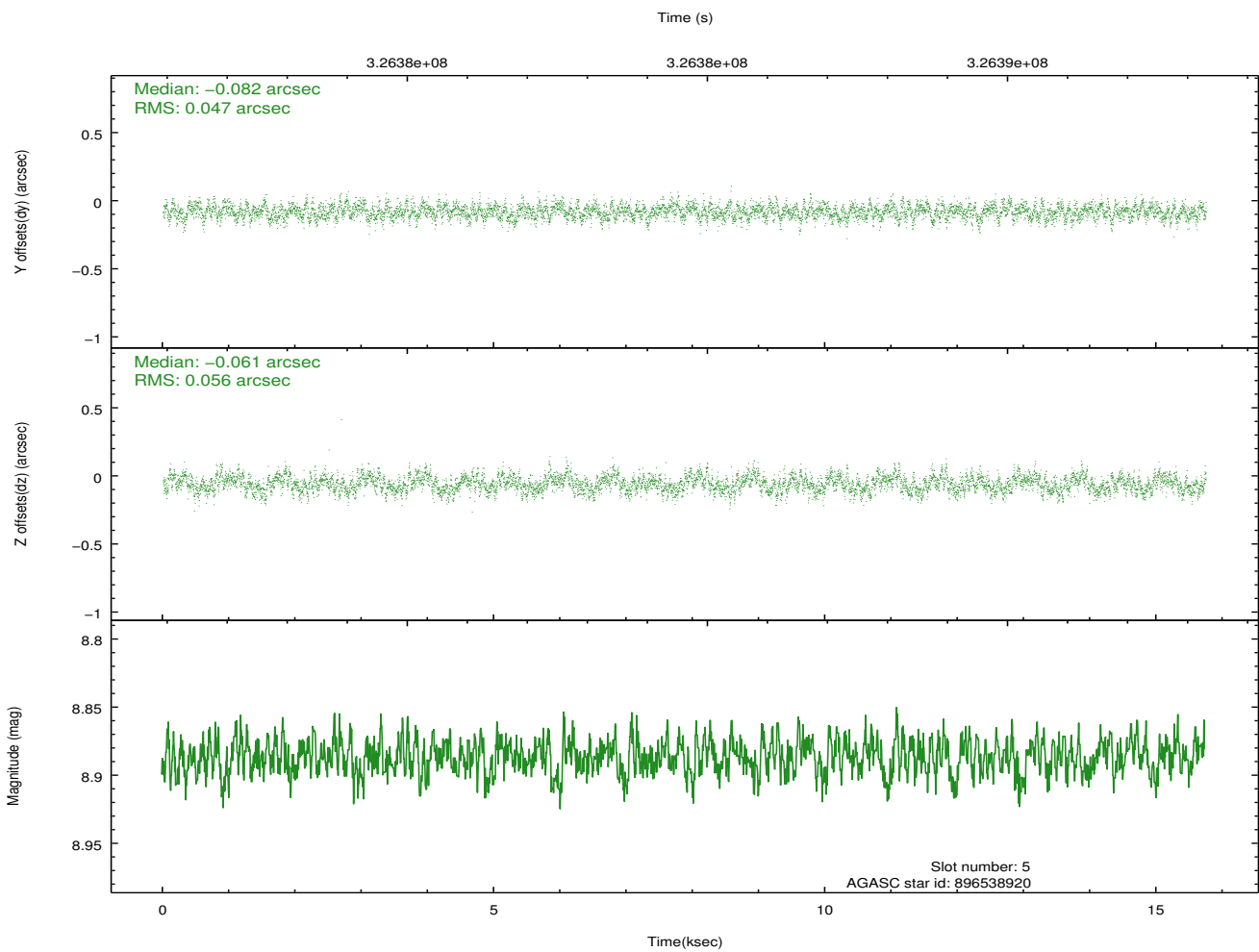
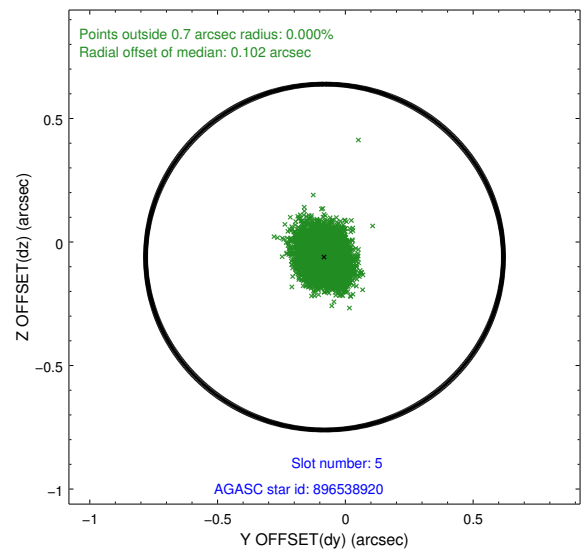
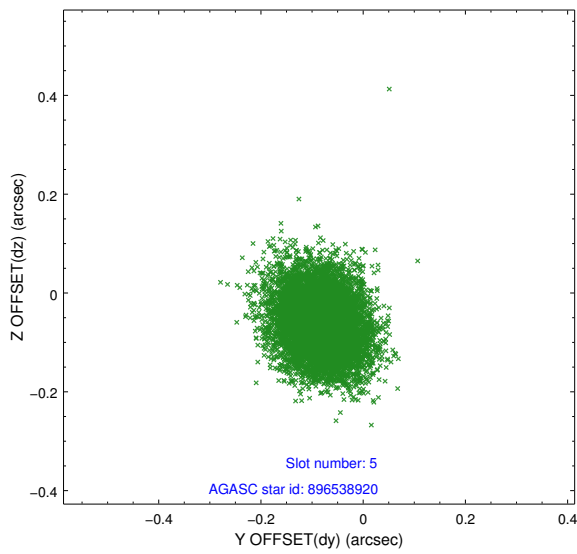
### 2.4.1 Slot 3



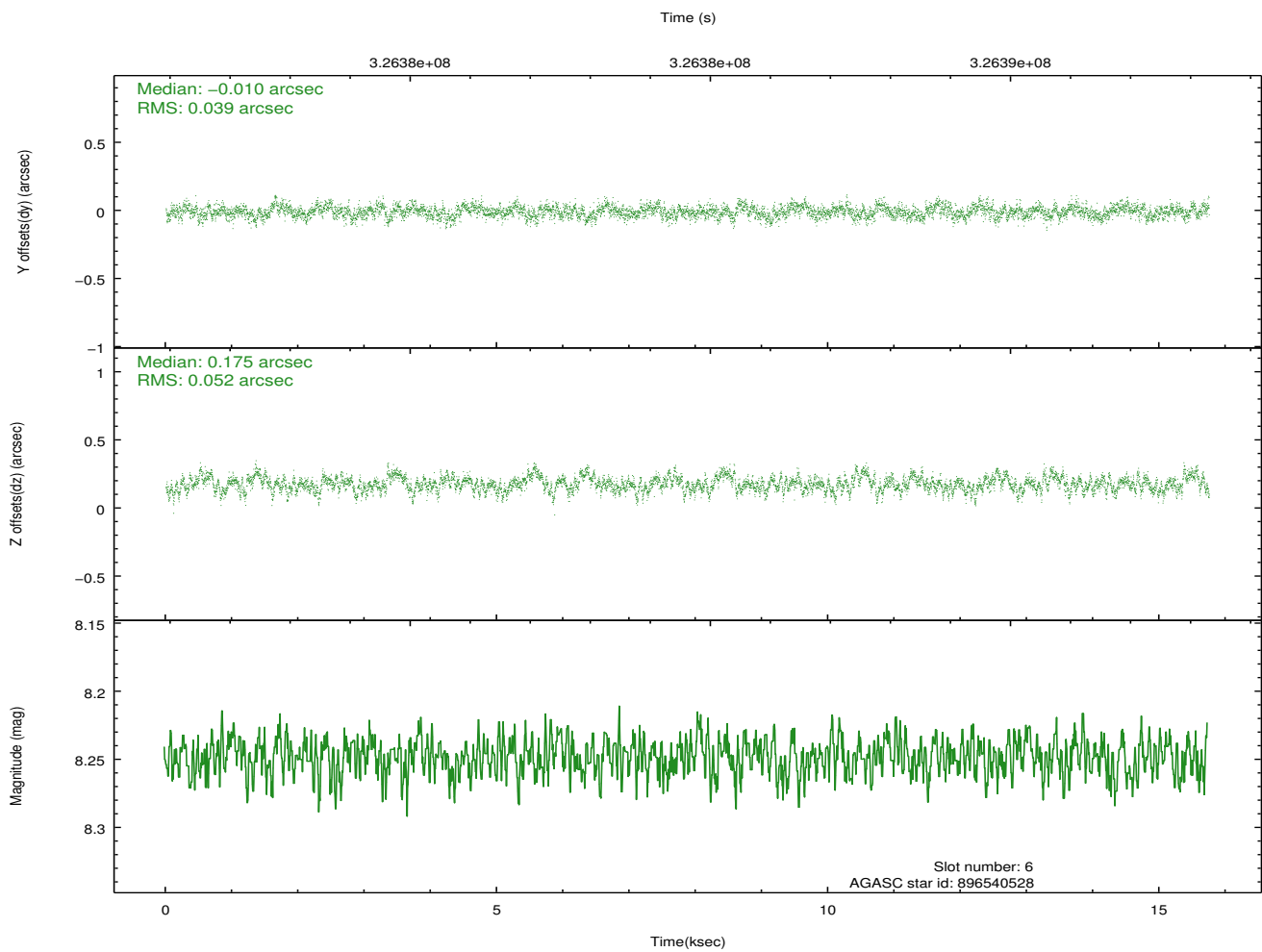
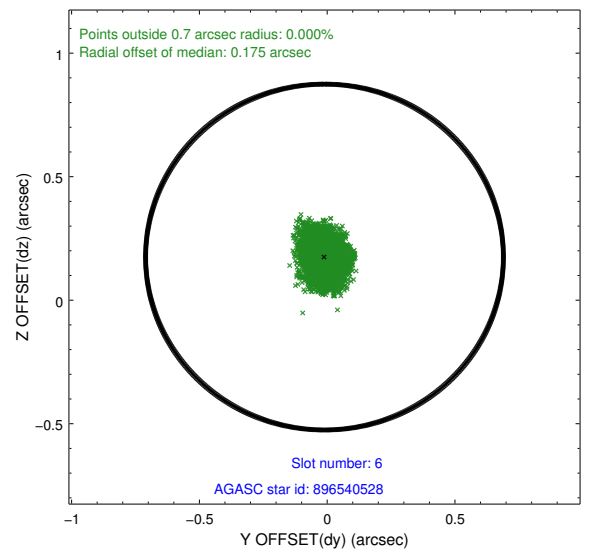
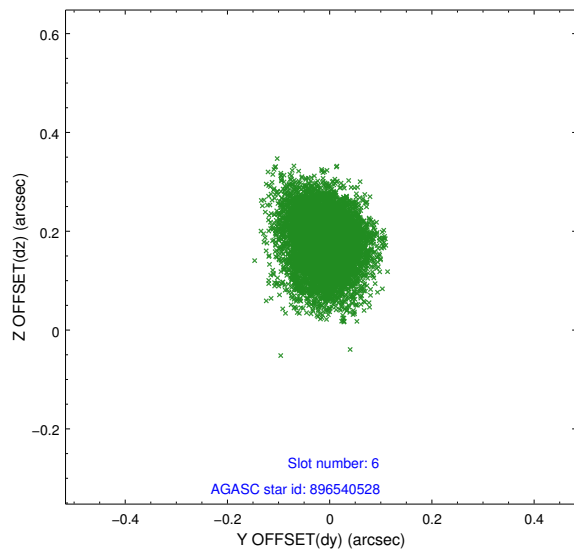
## 2.4.2 Slot 4



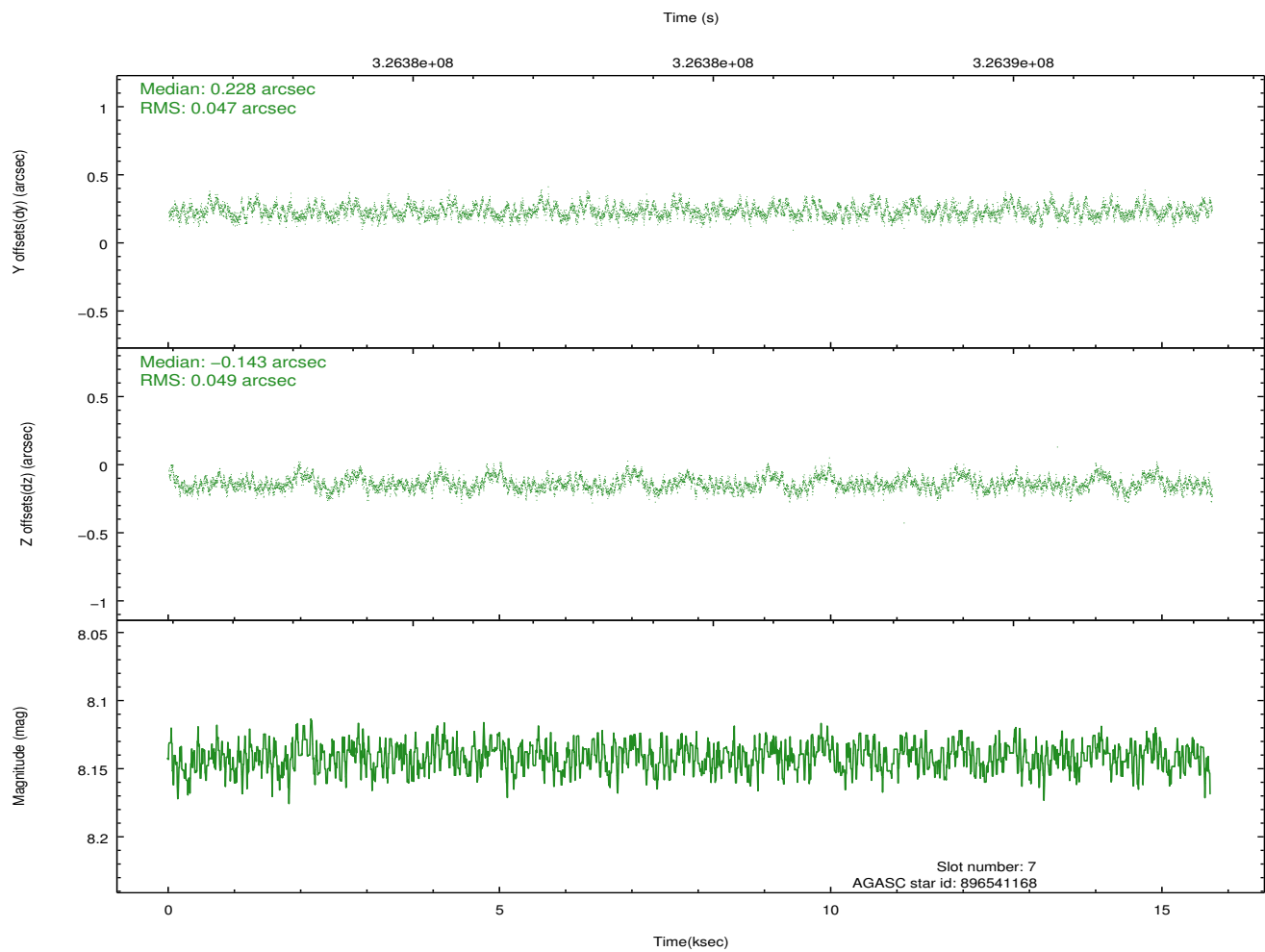
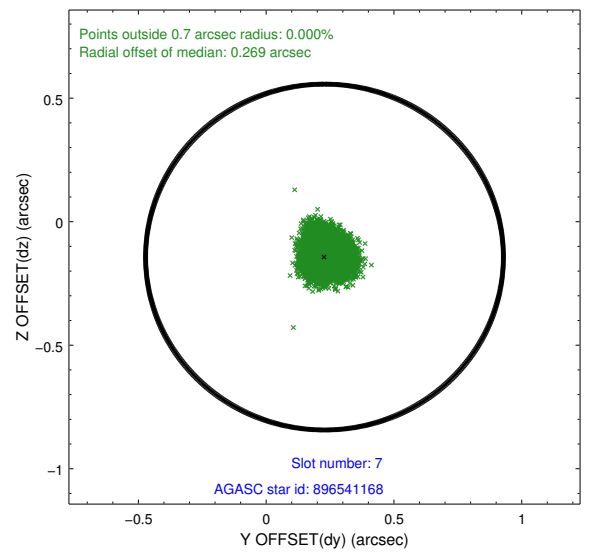
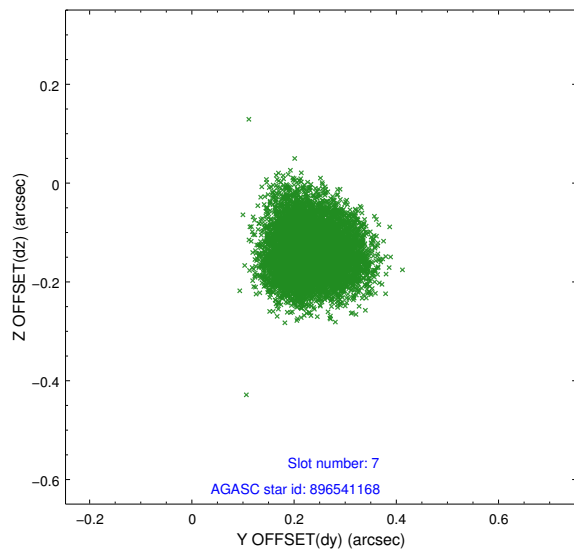
### 2.4.3 Slot 5



## 2.4.4 Slot 6

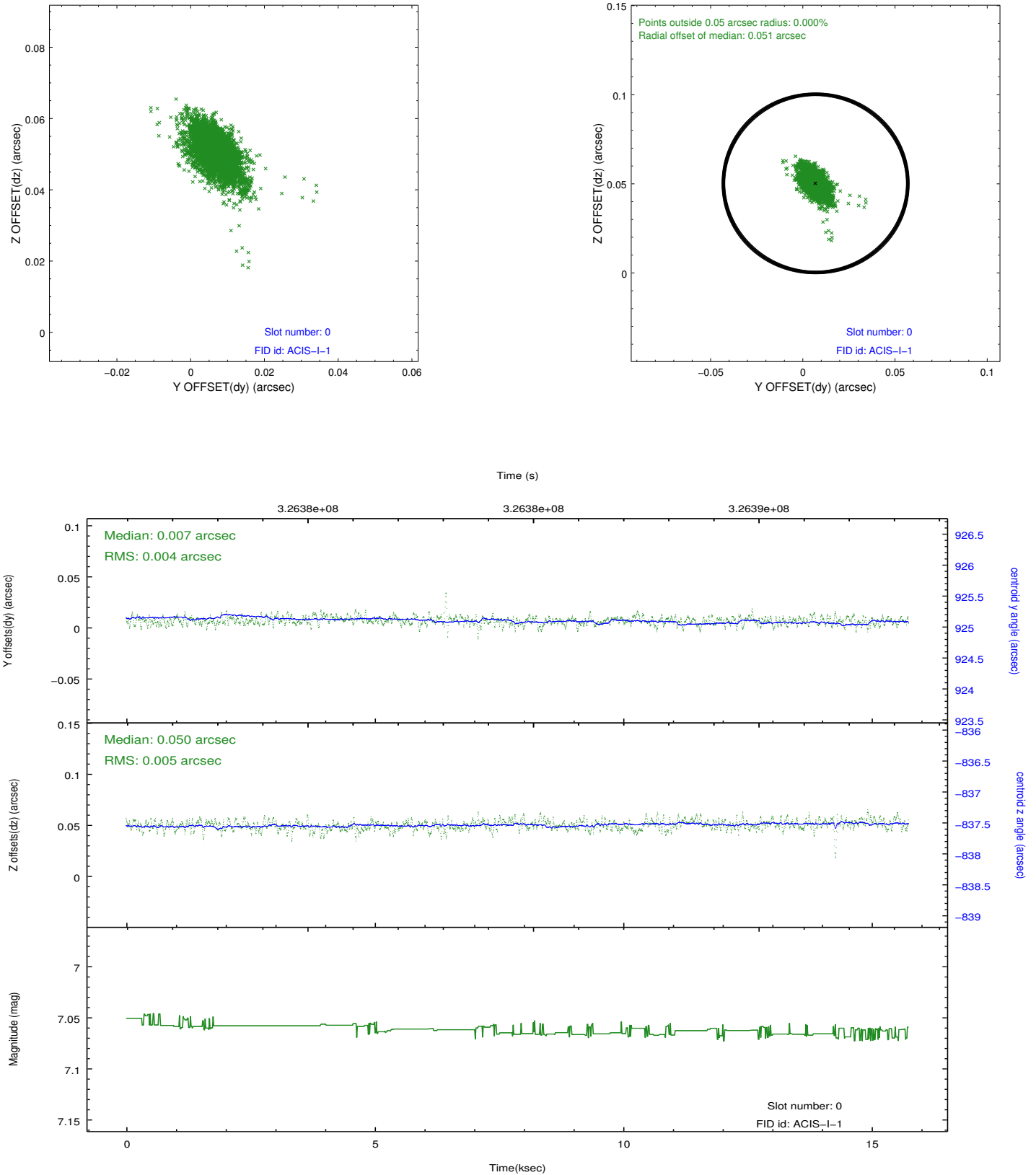


## 2.4.5 Slot 7

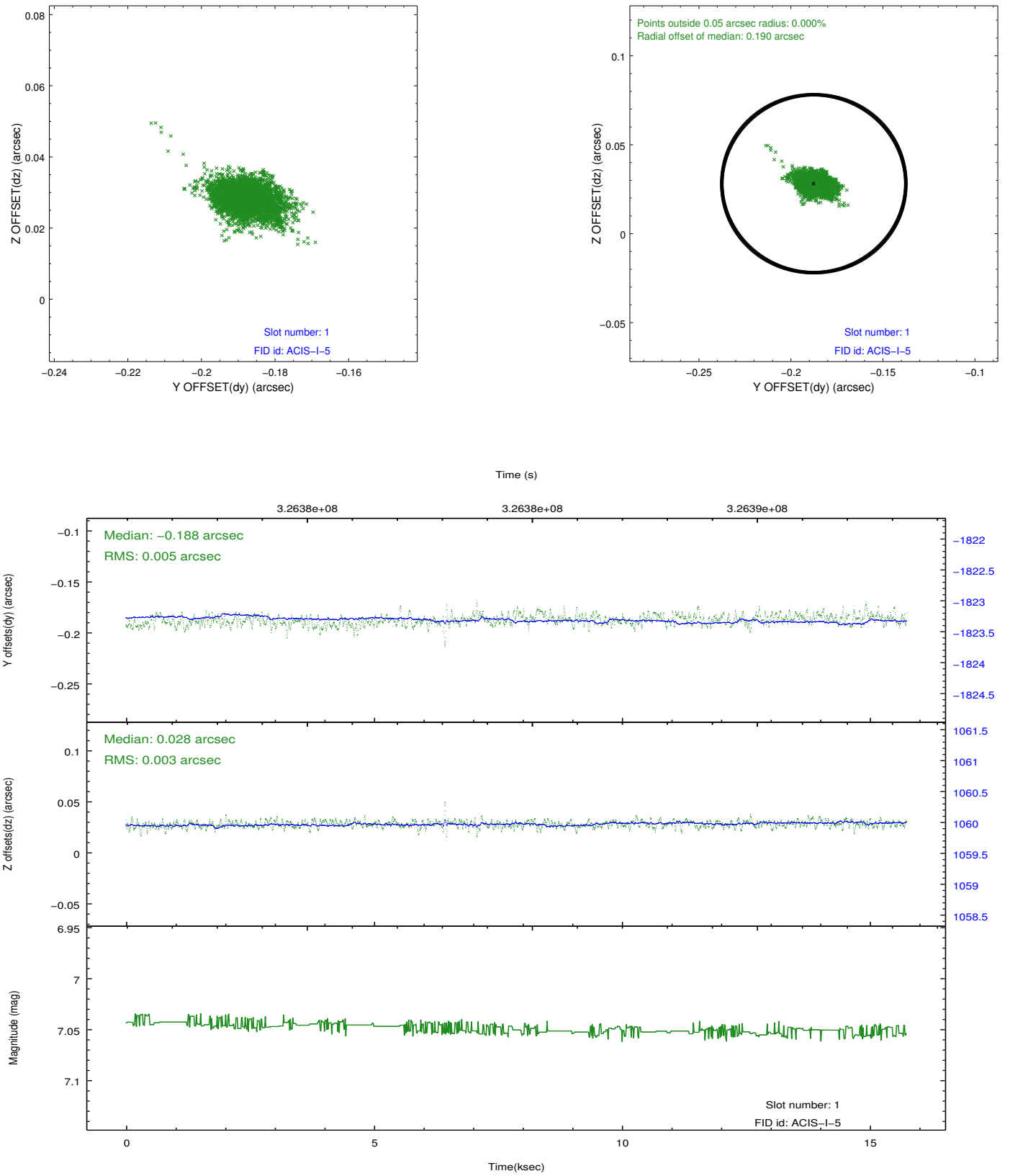


## 2.5 FID Slots

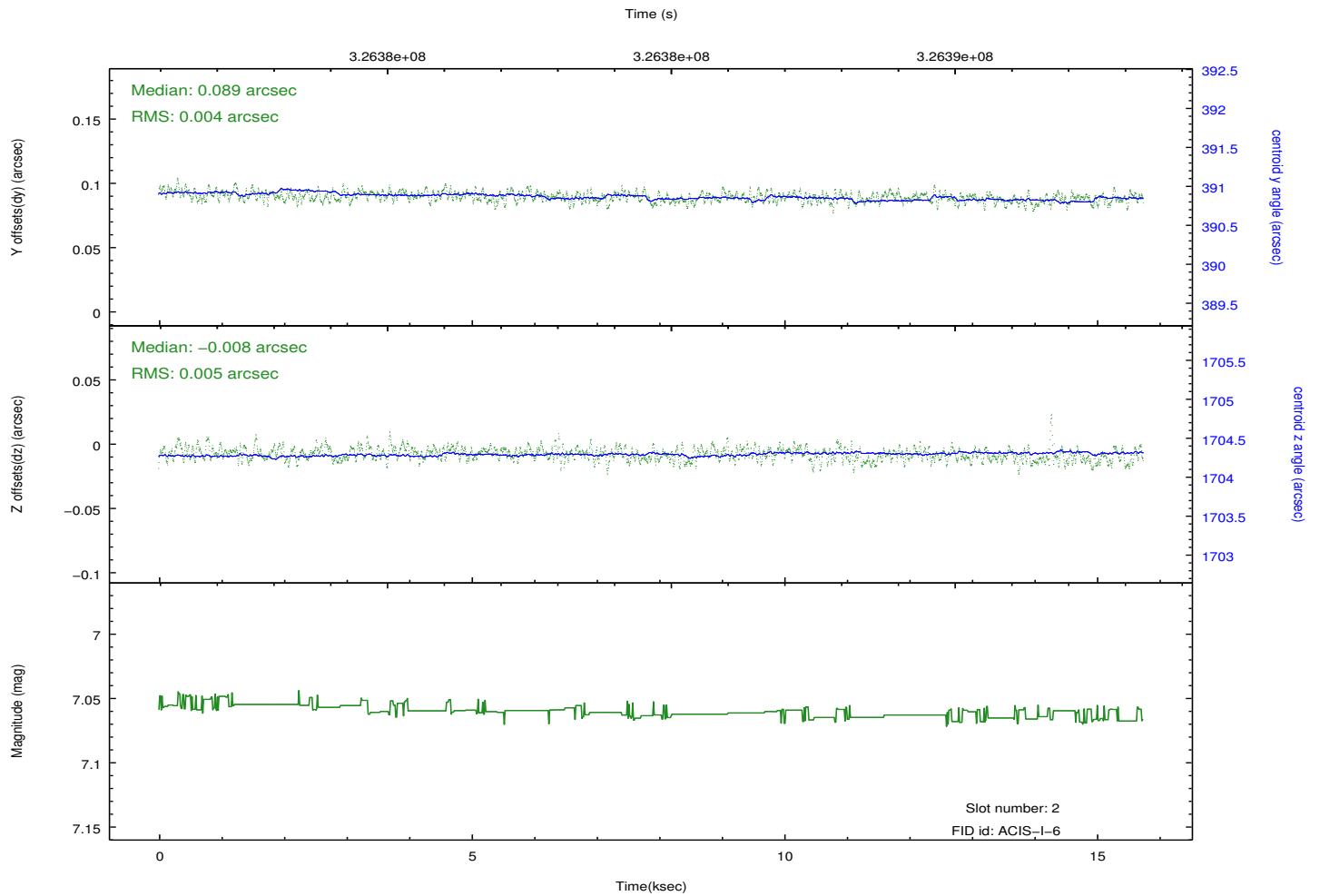
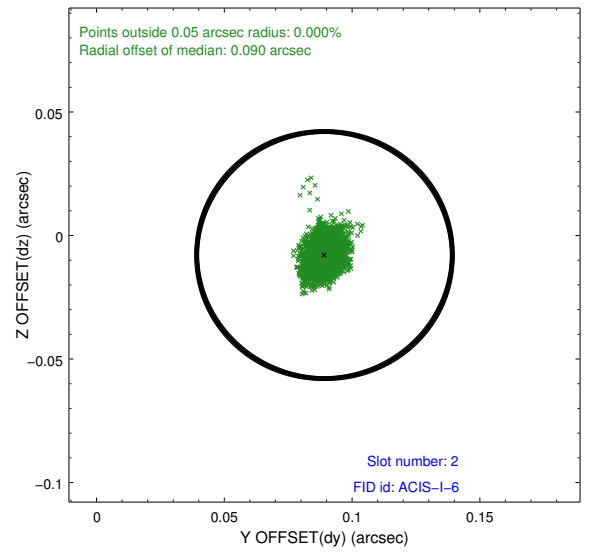
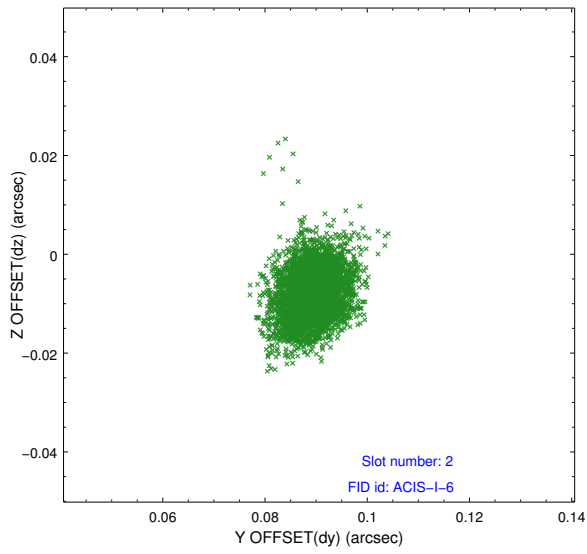
### 2.5.1 Slot 0



## 2.5.2 Slot 1



### 2.5.3 Slot 2



# A Summary

## A.1 Status

V&V Scientist	Jen Lauer
V&V Date (YYYY-MM-DD)	2012.05.15
V&V Edition	1
V&V Disposition and Status	OK
V&V Charge Time	14.8149001

## A.2 Comments

Preferred roll angle met. Joint proposal with NOAO.