

V&V Reference Report

L2 ASCDS Version : 8.4.4

Observation 9830 - L2 Version 2
Chandra X-Ray Center

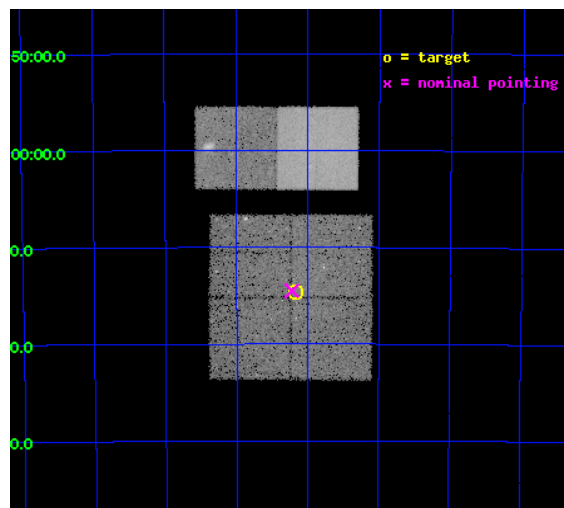
L2 Processing Date : May 10 2012

Contents

1	Front	2
2	OBI	3
2.1	OBI	3
2.1.1	Images	3
2.1.2	Bias	3
2.1.3	Parameters	4
2.1.4	Events	4
2.2	Compared Parameters	5
2.3	Aspect	6
2.4	Star Slots	9
2.4.1	Slot 3	9
2.4.2	Slot 4	10
2.4.3	Slot 5	11
2.4.4	Slot 6	12
2.4.5	Slot 7	13
2.5	FID Slots	14
2.5.1	Slot 0	14
2.5.2	Slot 1	15
2.5.3	Slot 2	16
A	Summary	17
A.1	Status	17
A.2	Comments	17

1 Front

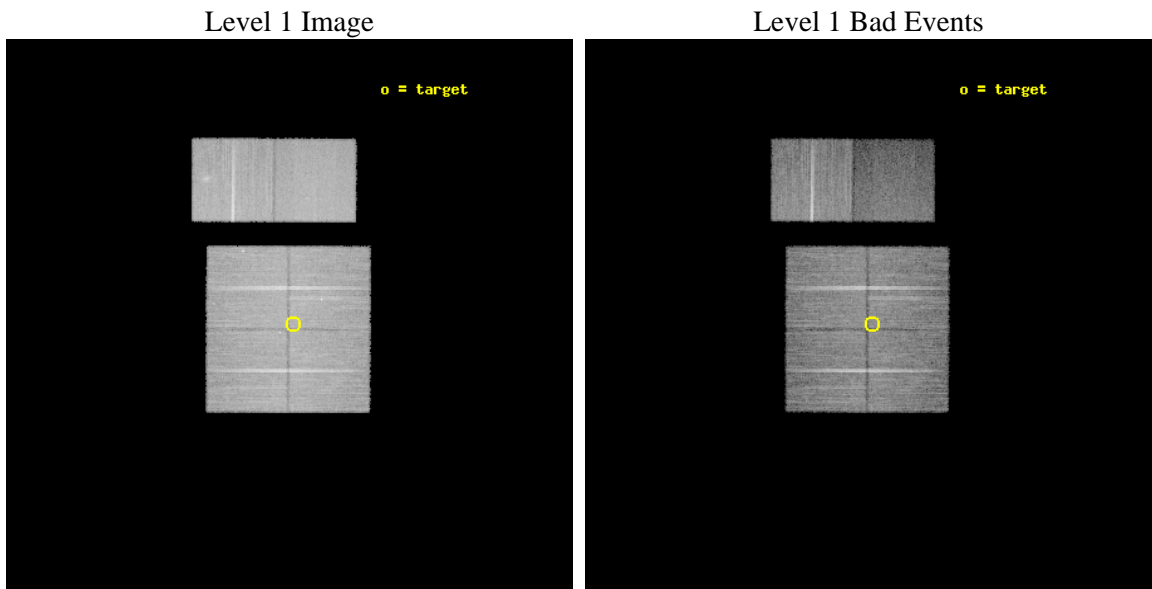
seq_num	900830	Sequence number
obs_id	9830	Observation id
title	The Great Nebula in Carina: Protoplanetary Disks to Starburst Galaxies	Proposal title
observer	Dr. Leisa Townsley	Principal investigator
object	Carina South Pillars Ptg 2	Source name
dtcycle	0	
cycle	P	events from which exps? Prim/Second/Both
ra_targ	160.790417	Observer's specified target RA [deg]
dec_targ	-60.244139	Observer's specified target Dec [deg]
ra_nom	160.80592854823	Nominal RA [deg]
dec_nom	-60.241703336203	Nominal Dec [deg]
roll_nom	0.22215175678076	Nominal Roll [deg]
revision	2	Processing version of data
ontime	20040.129024565	Sum of GTIs [s]
livetime	19786.368844139	Livetime [s]
ontime0	20040.005904555	Sum of GTIs [s]
ontime1	20040.046944559	Sum of GTIs [s]
ontime2	20040.087984562	Sum of GTIs [s]
ontime3	20040.129024565	Sum of GTIs [s]
ontime6	20040.211104572	Sum of GTIs [s]
ontime7	20040.170064569	Sum of GTIs [s]
l2events	160767	Number of level 2 events



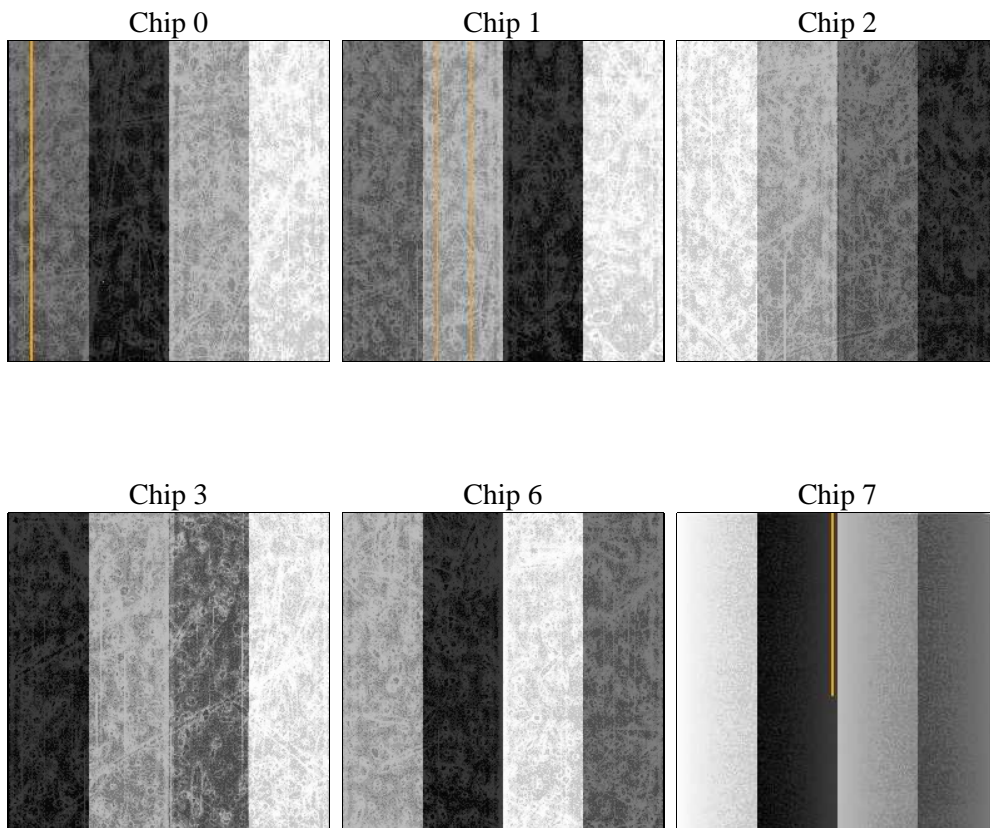
2 OBI

2.1 OBI

2.1.1 Images



2.1.2 Bias



2.1.3 Parameters

obi_num	0	Obi number	sched_exp_time	20000.000000	[s] Scheduled observation exposure time
ascdsver	8.4.4	Processing system revision	ontime	20040.129024565	Sum of GTIs [s]
caldbver	4.4.9	 	ontime0	20040.005904555	Sum of GTIs [s]
date	2012-05-10T11:15:30	Date and time of file creation	ontime1	20040.046944559	Sum of GTIs [s]
revision	2	Processing version of data	ontime2	20040.087984562	Sum of GTIs [s]
			ontime3	20040.129024565	Sum of GTIs [s]
			ontime6	20040.211104572	Sum of GTIs [s]
			ontime7	20040.170064569	Sum of GTIs [s]
			l1events	918849	Number of level 1 events

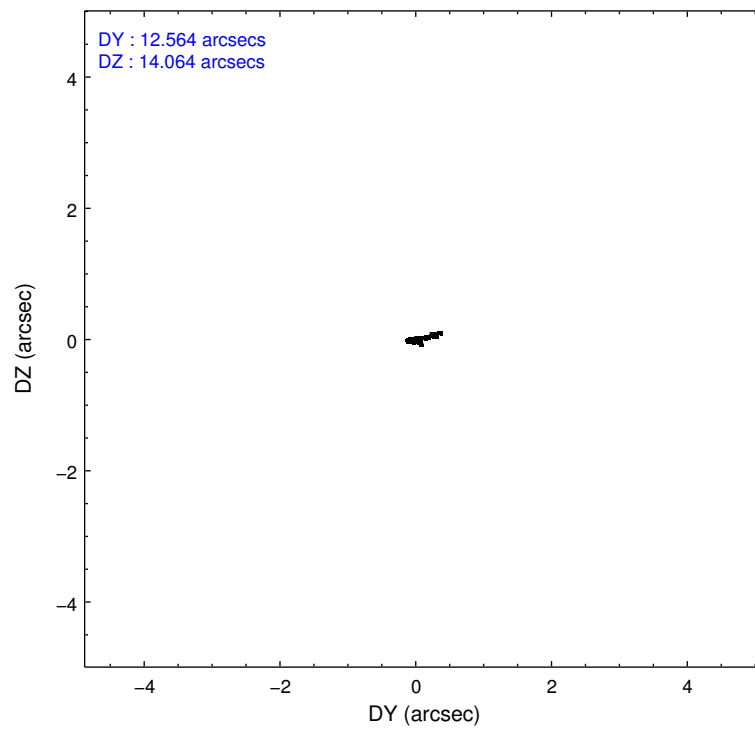
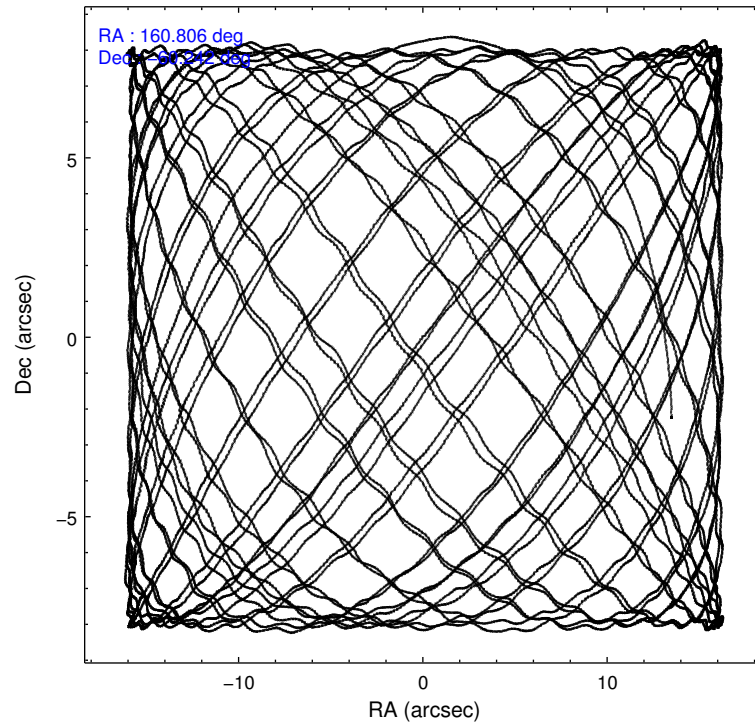
2.1.4 Events

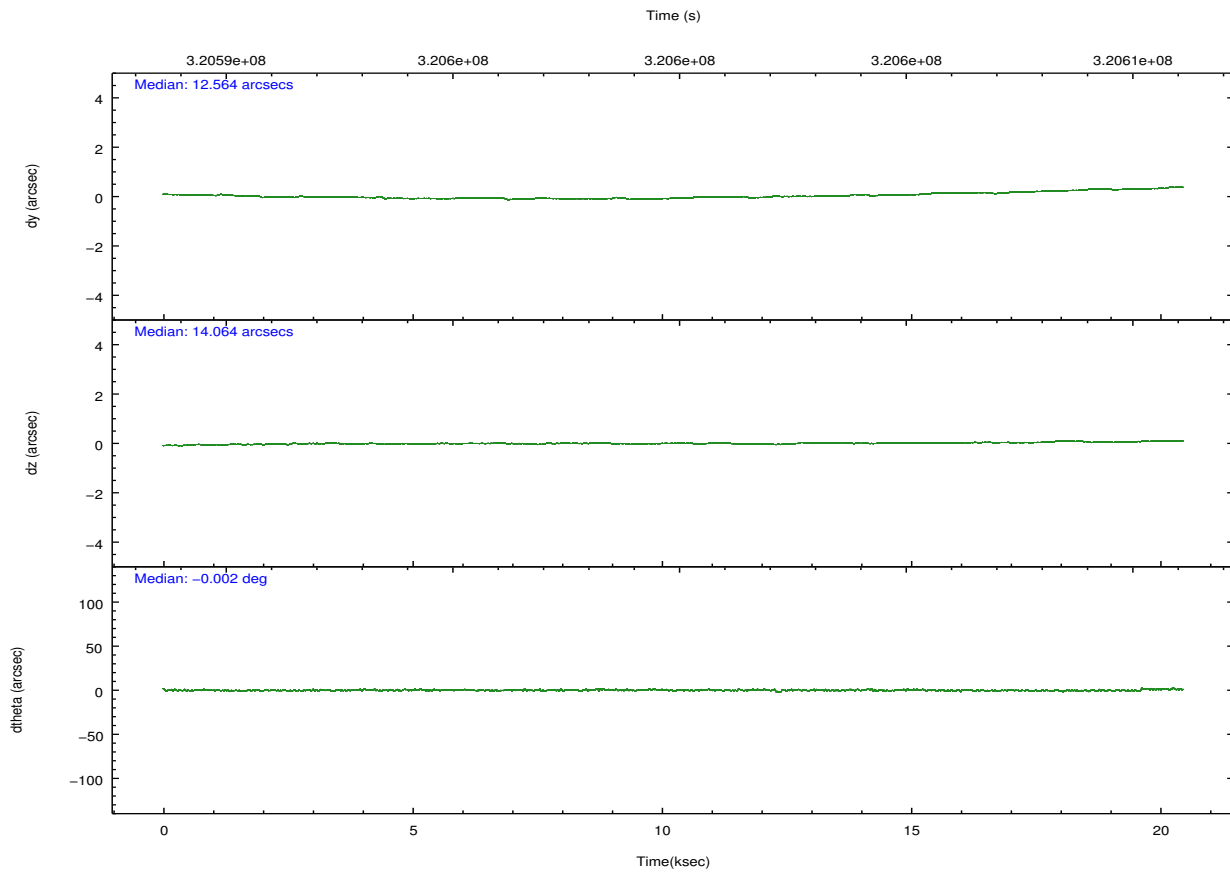
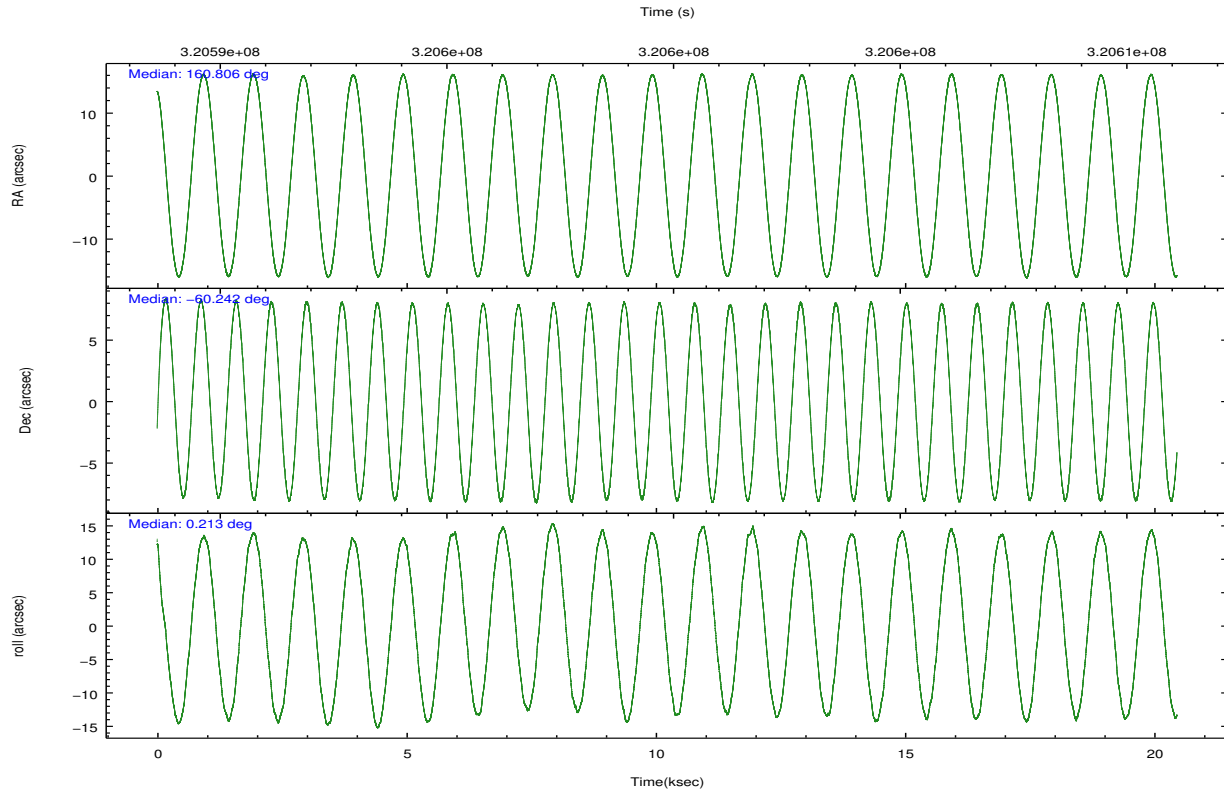
	ccd 0	ccd 1	ccd 2	ccd 3	ccd 6	ccd 7		ccd 0	ccd 1	ccd 2	ccd 3	ccd 6	ccd 7
level 1 events	144329	142067	160530	154220	163801	153902	grade 0 events	7717	7570	8734	9334	13413	10829
rejected events	126963	124157	142198	135602	139504	72700		5%	5%	5%	6%	8%	7%
rejected %	87%	87%	88%	87%	85%	47%	grade 1 events	113	83	109	110	119	219
								0%	0%	0%	0%	0%	0%
							grade 2 events	3720	3593	3831	3348	4038	17748
								2%	2%	2%	2%	2%	11%
							grade 3 events	1657	1836	1628	1670	1867	7855
								1%	1%	1%	1%	1%	5%
							grade 4 events	1574	1758	1660	1580	1795	7917
								1%	1%	1%	1%	1%	5%
							grade 5 events	4412	5009	4147	5171	5390	15488
								3%	3%	2%	3%	3%	10%
							grade 6 events	2704	3159	2484	2691	3191	36875
								1%	2%	1%	1%	1%	23%
							grade 7 events	122432	119059	137937	130316	133988	56971
								84%	83%	85%	84%	81%	37%

2.2 Compared Parameters

Parameter	Planned	Actual	Parameter	Planned	Actual
Instrument	ACIS	ACIS	Obspar format version number	7	7
Detector	ACIS-012367	ACIS-012367	Obspar file type	PREDICTED	ACTUAL
Grating	NONE	NONE	Obspar update status	NONE	UPDATED
Data mode	VFAINT	VFAINT	CCD I0 on	Y	Y
Observation mode	POINTING	POINTING	CCD I1 on	Y	Y
[deg] Pointing RA	160.758160	160.8059285482258	CCD I2 on	Y	Y
[deg] Pointing Dec	-60.255637	-60.24170333620265	CCD I3 on	Y	Y
[deg] Pointing Roll	359.971989	0.2221517567807648	CCD S0 on	N	N
[mm] SIM focus pos	-0.782348	-0.7809083437167272	CCD S1 on	N	N
[mm] SIM defocus	0	0.001439871863259334	CCD S2 on	O1	Y
[mm] SIM translation stage pos	-233.592463	-233.5874344608287	CCD S3 on	O2	Y
[mm] SIM translation stage offset	0	-0.005018542100998502	CCD S4 on	N	N
[s] Observation start time (MET)	320590073.184000	320588928.56059	CCD S5 on	N	N
Observation start date	2008-02-28T12:46:48	2008-02-28T12:28:48	Number of optional ACIS chips dropped	0	0
[s] Observation end time (MET)	320610073.184000	320610803.08666	On-chip summing requested	N	N
Observation end date	2008-02-28T18:20:08	2008-02-28T18:33:23	Subarray requested	NONE	NONE
Read mode	TIMED	TIMED	Alternating exposures requested	N	N
			[s] Primary exposure time	0.000000	3.2

2.3 Aspect



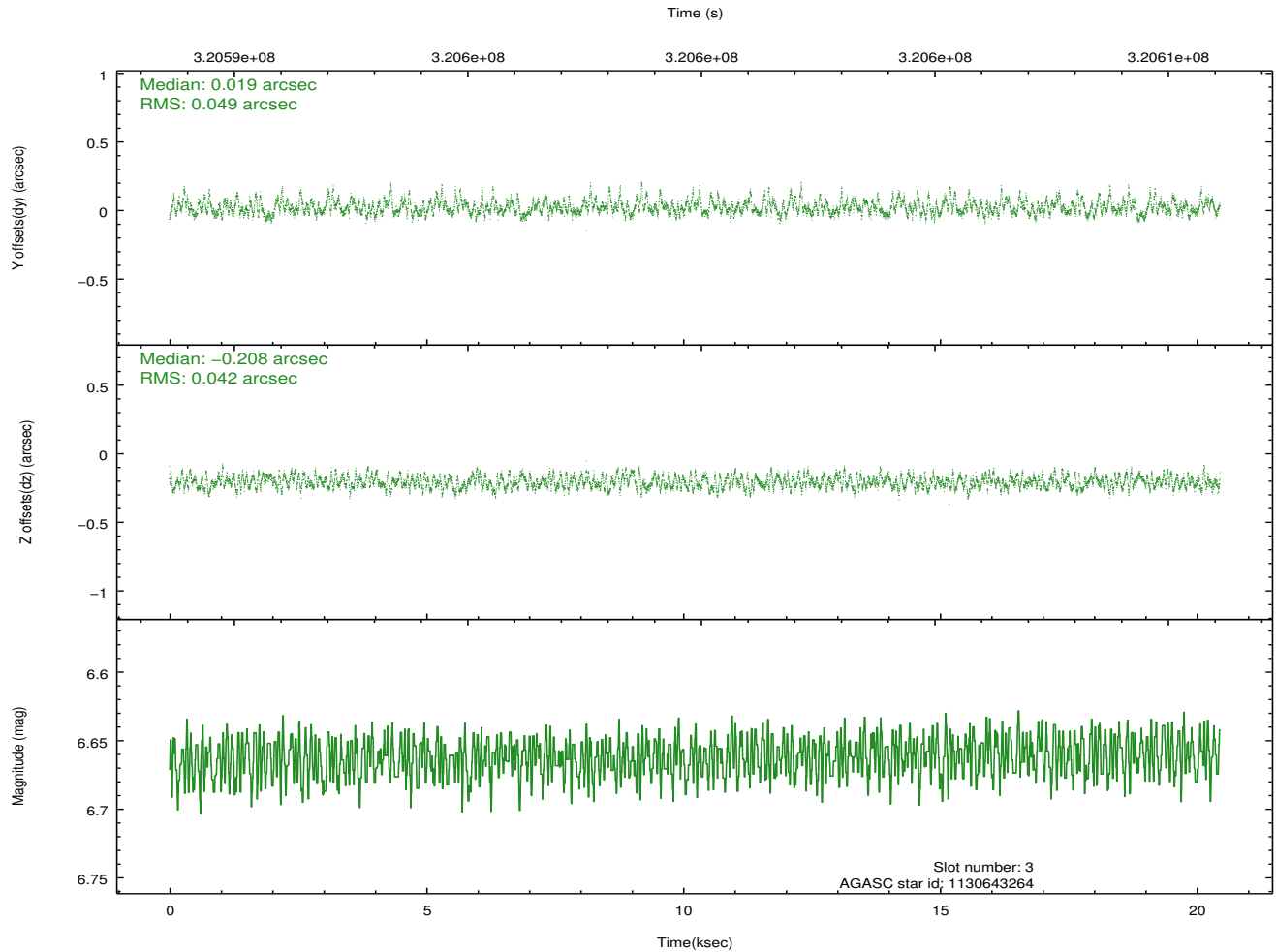
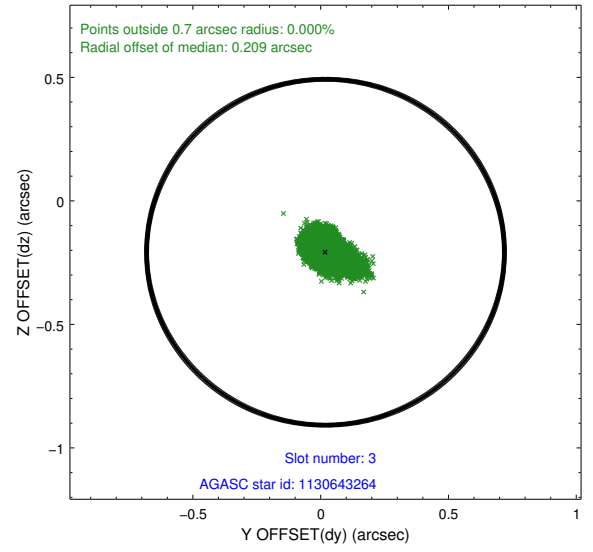
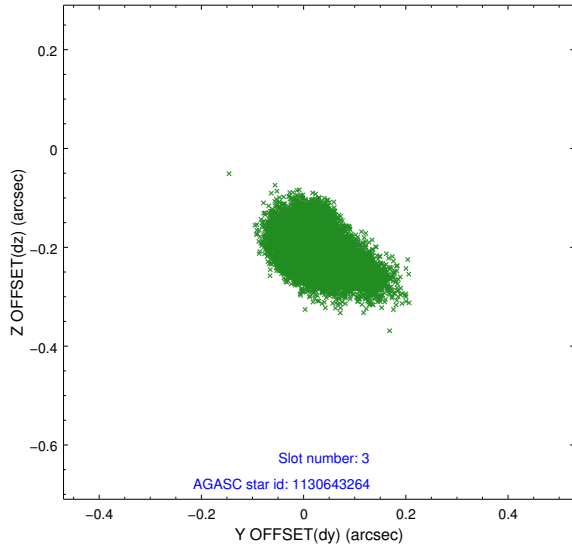


Slot Statistics

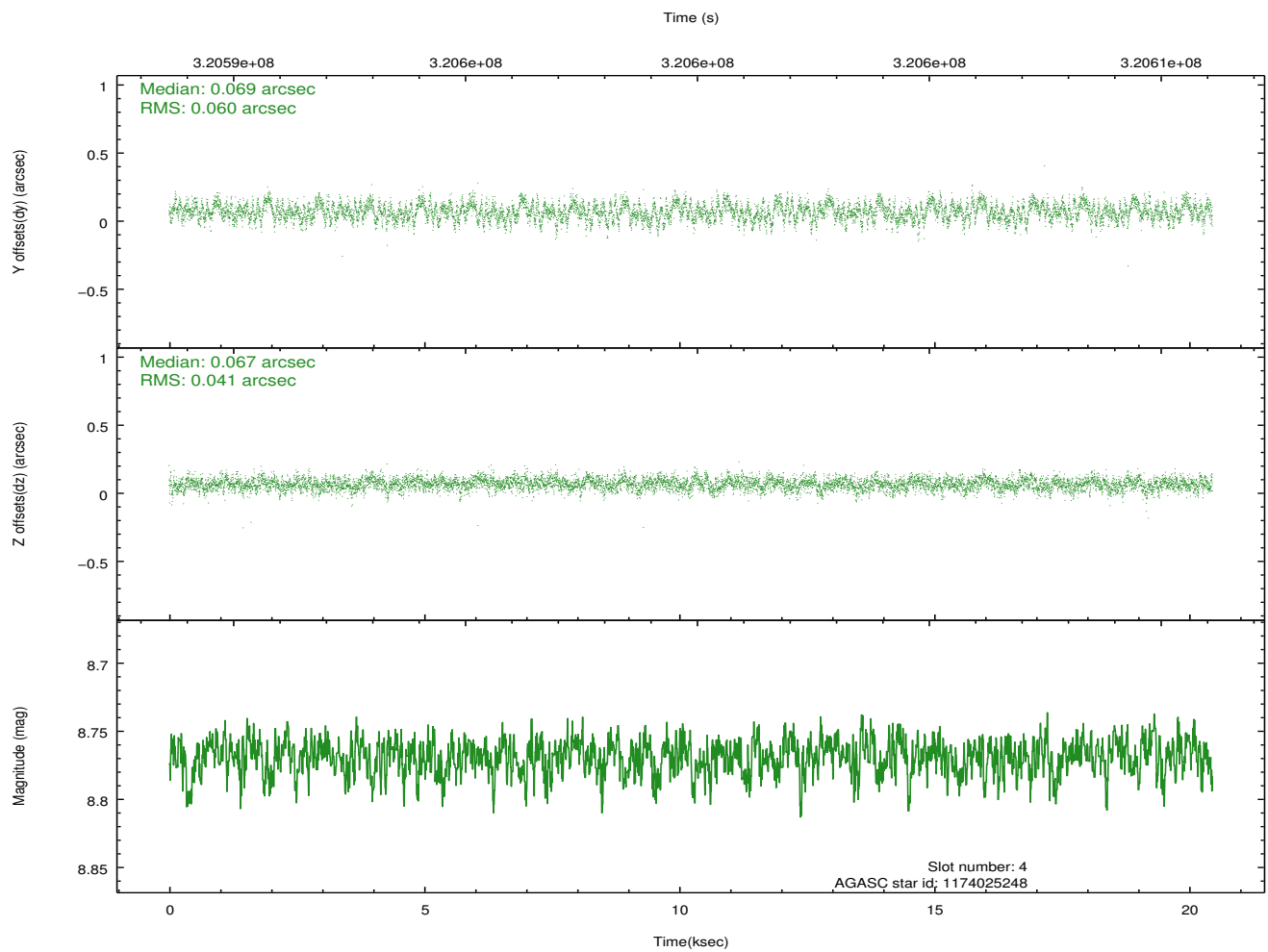
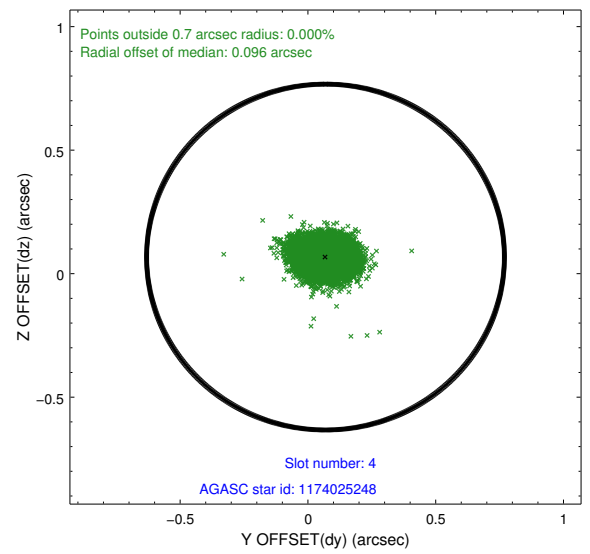
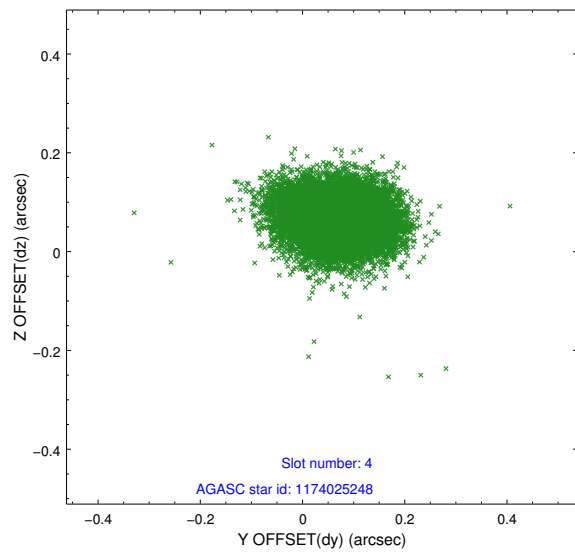
slot	status	id	mag	n_pts	med_dy	med_dz	dr1	dr2	ra	dec	mean_y	mean_z
0	FID	ACIS-I-1	7.23	4990	-0.021	0.012	0.009	0.018	0.000000	0.000000	926.89	-837.63
1	FID	ACIS-I-4	7.17	4988	0.173	0.026	0.010	0.018	0.000000	0.000000	2147.25	1062.08
2	FID	ACIS-I-5	7.21	4990	-0.250	0.033	0.009	0.016	0.000000	0.000000	-1821.09	1060.18
3	GUIDE	1130643264	6.66	9979	0.019	-0.208	0.066	0.115	160.322990	-59.676912	-791.97	2080.36
4	GUIDE	1174025248	8.77	9973	0.069	0.067	0.077	0.125	161.784801	-60.573378	1816.86	-1156.32
5	GUIDE	1174042520	8.70	9970	-0.155	0.047	0.074	0.124	161.882835	-60.770414	1978.64	-1868.66
6	GUIDE	1174043408	8.77	9976	-0.108	0.106	0.078	0.123	161.559146	-60.825256	1407.45	-2058.12
7	GUIDE	1174020184	8.13	9976	0.174	-0.013	0.054	0.089	159.502388	-60.147833	-2249.85	365.23

2.4 Star Slots

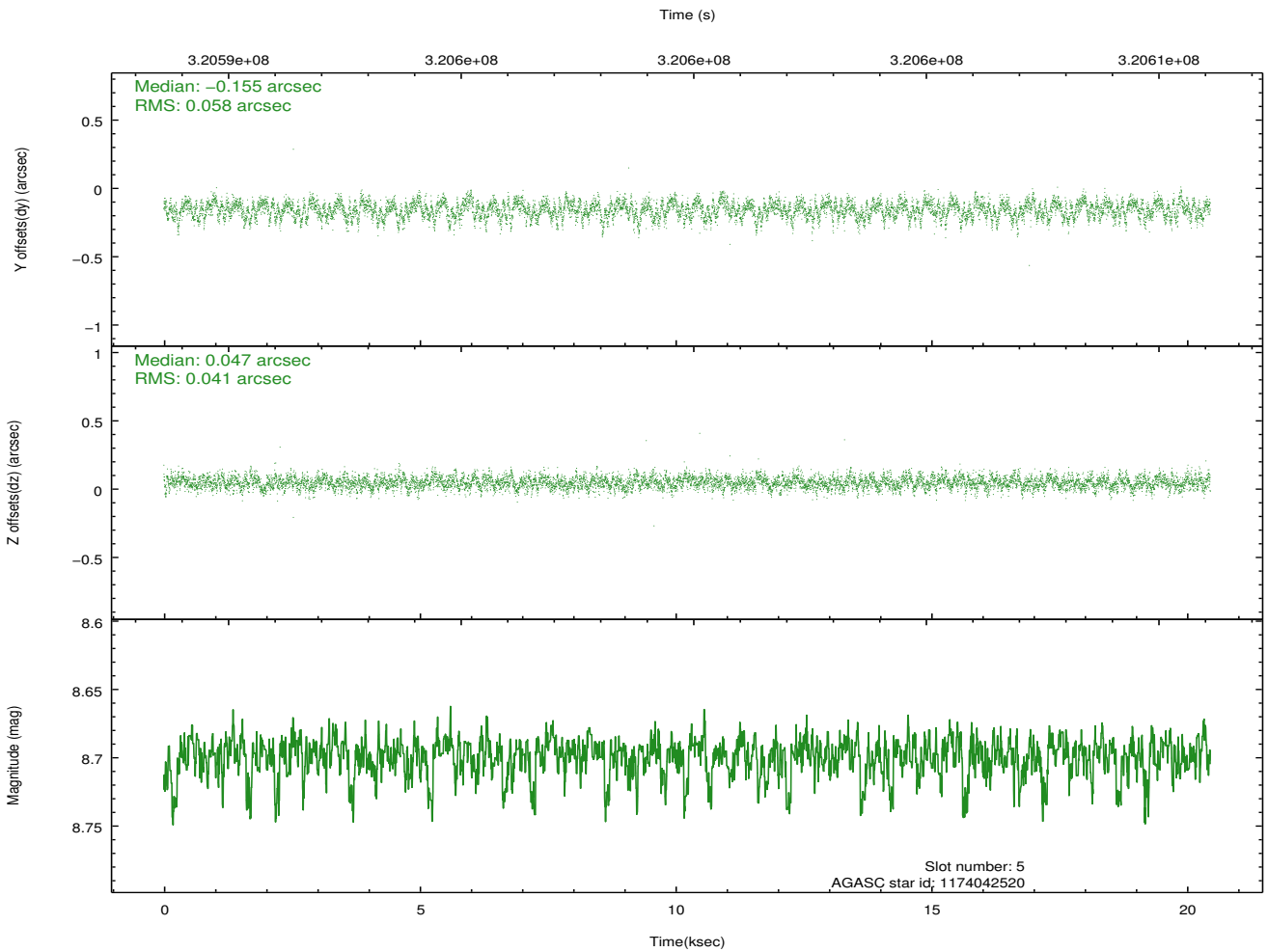
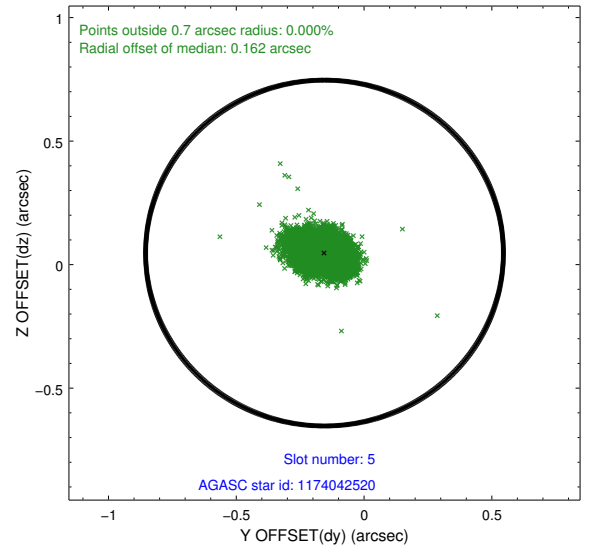
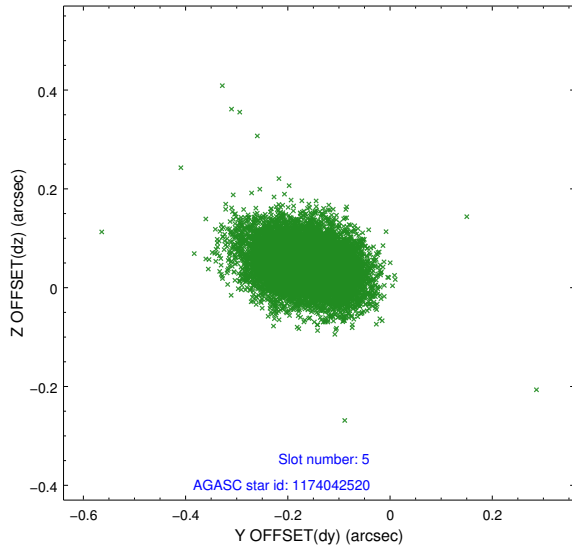
2.4.1 Slot 3



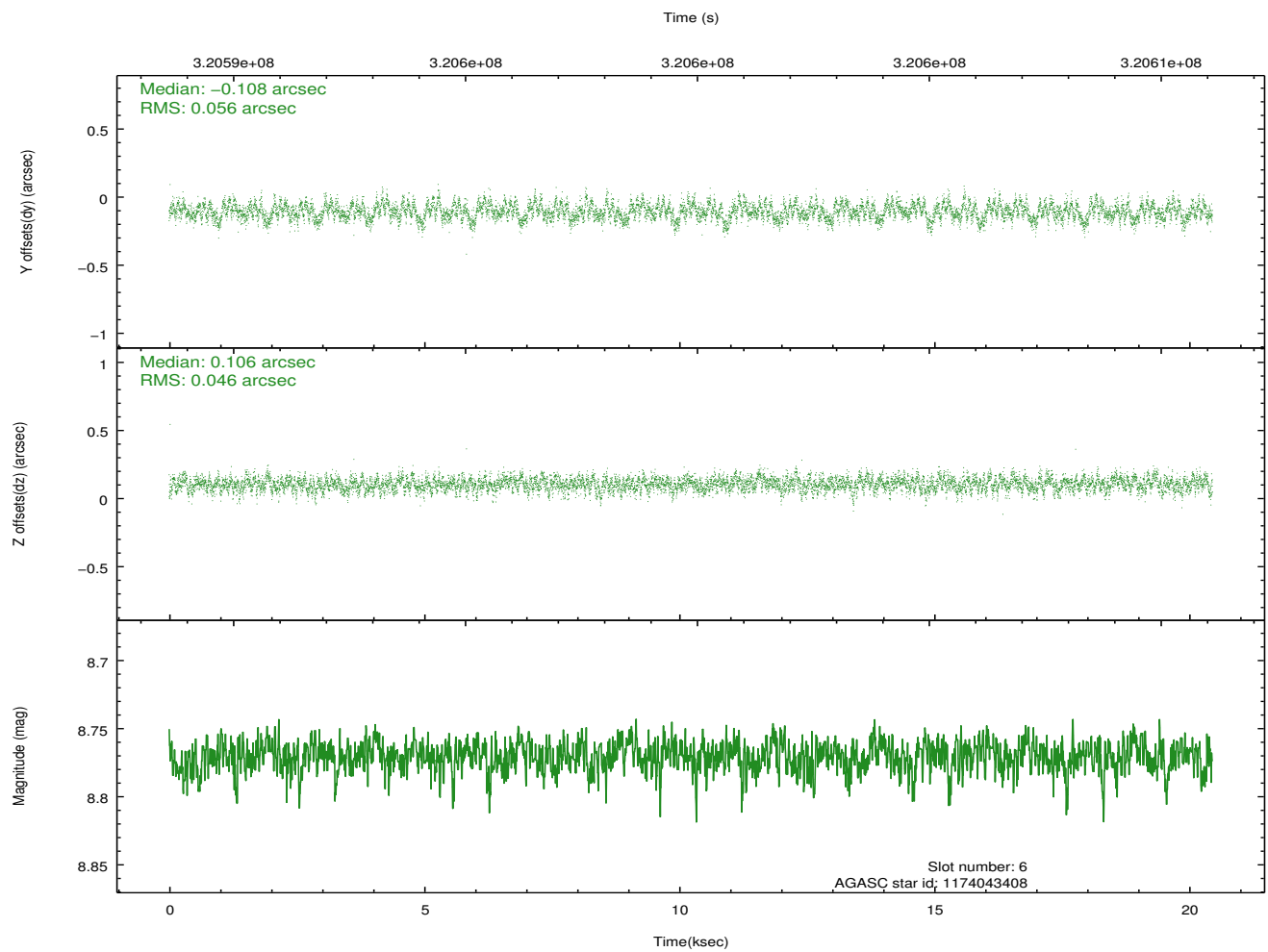
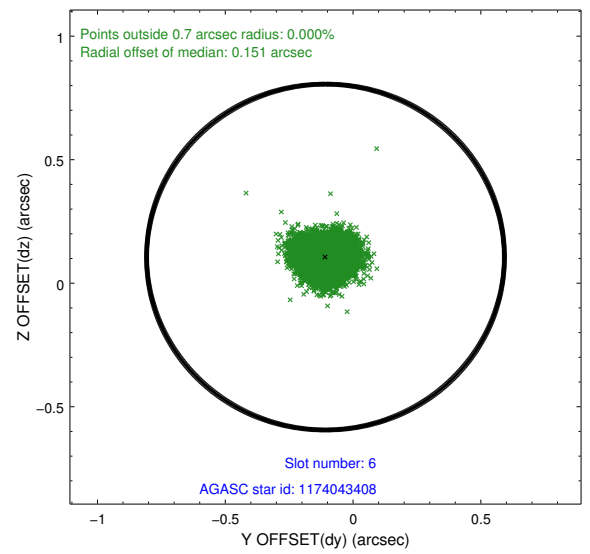
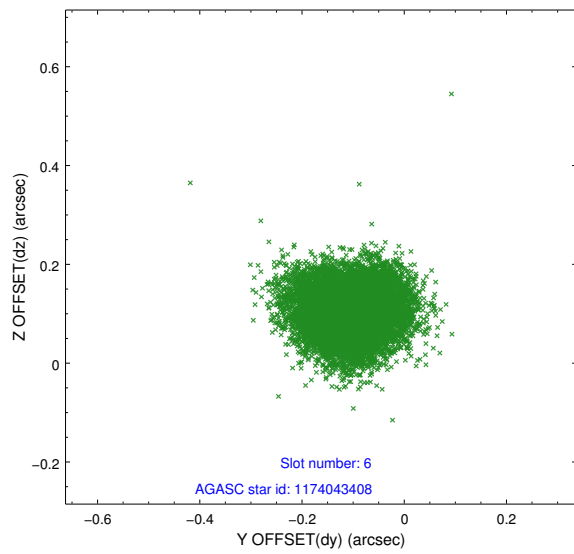
2.4.2 Slot 4



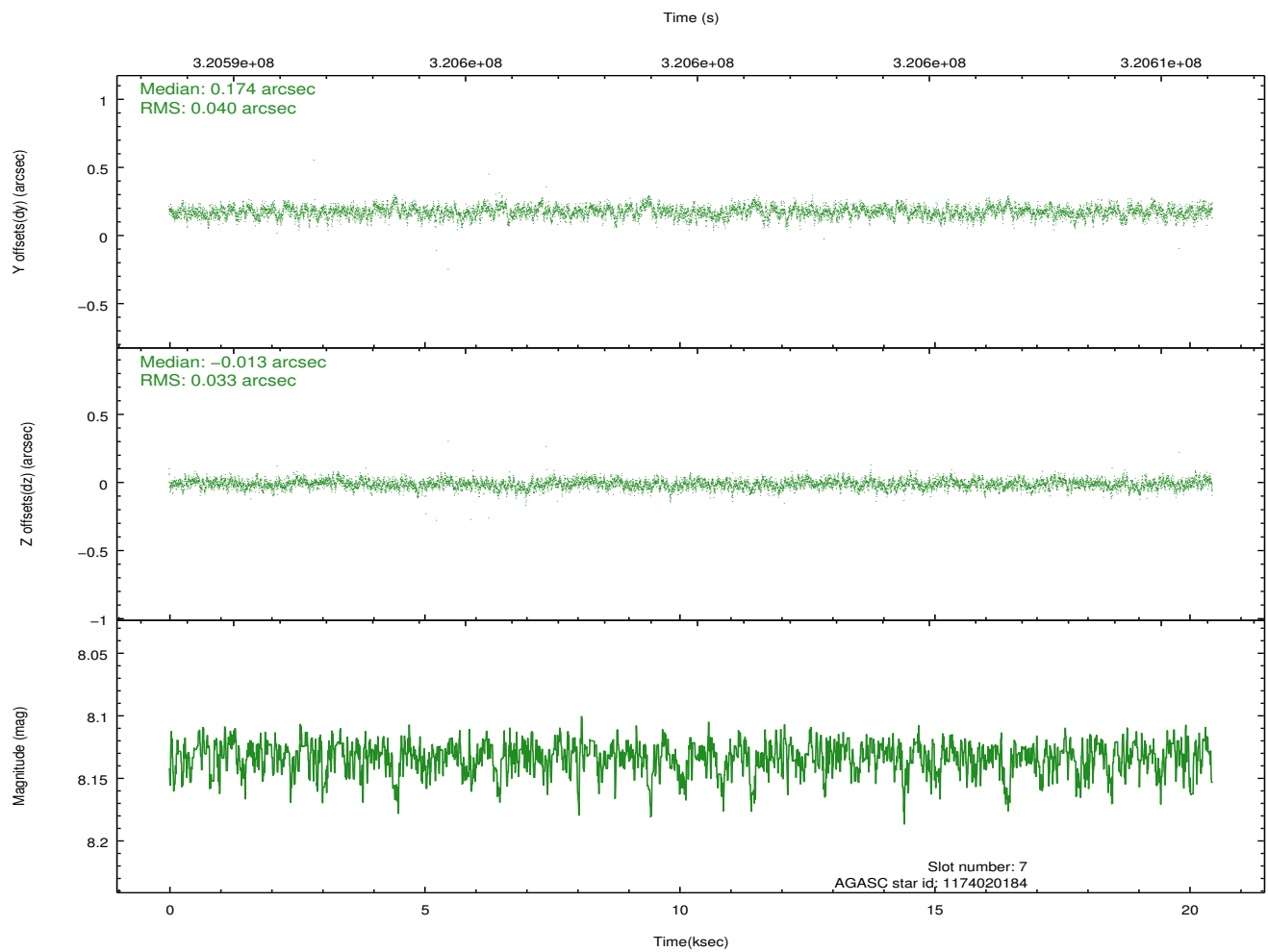
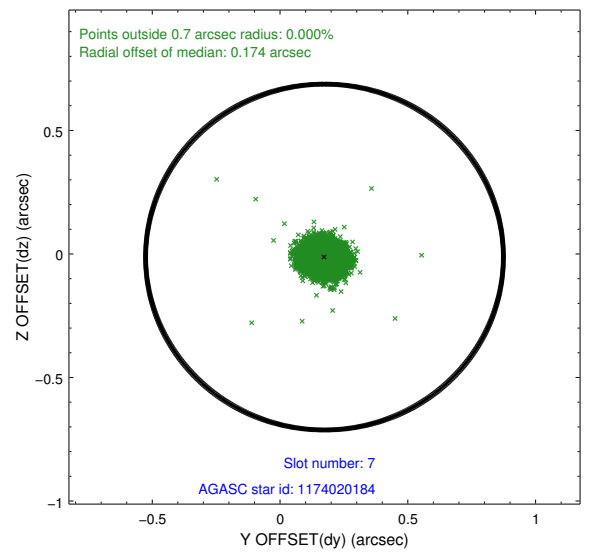
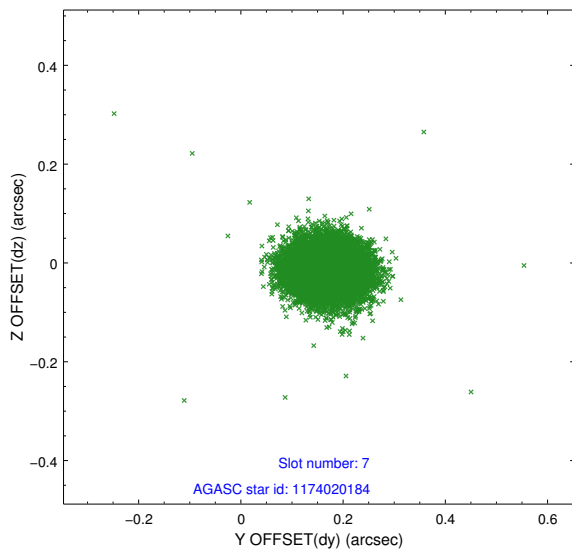
2.4.3 Slot 5



2.4.4 Slot 6

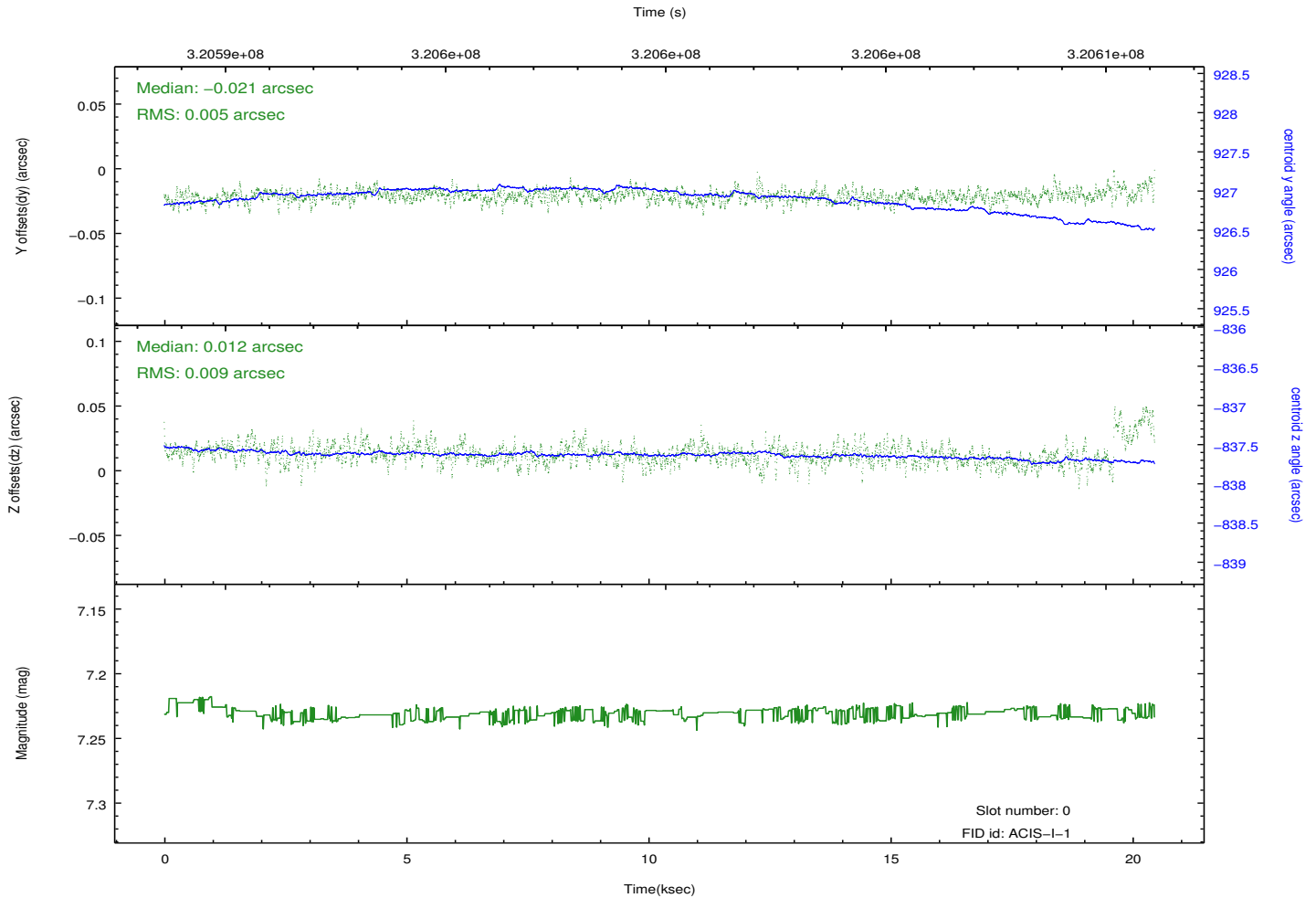
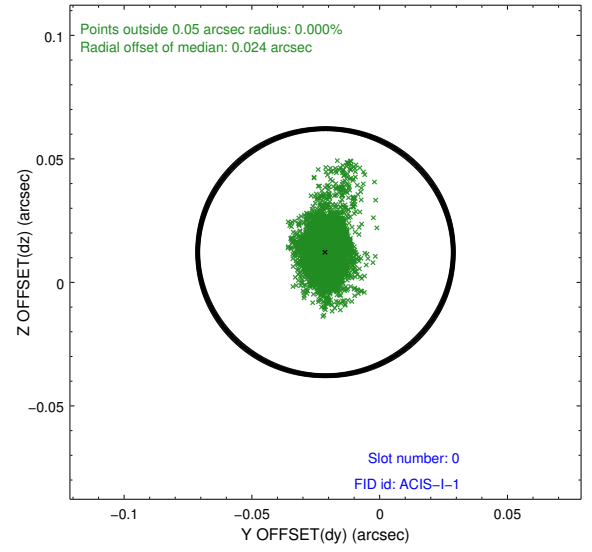
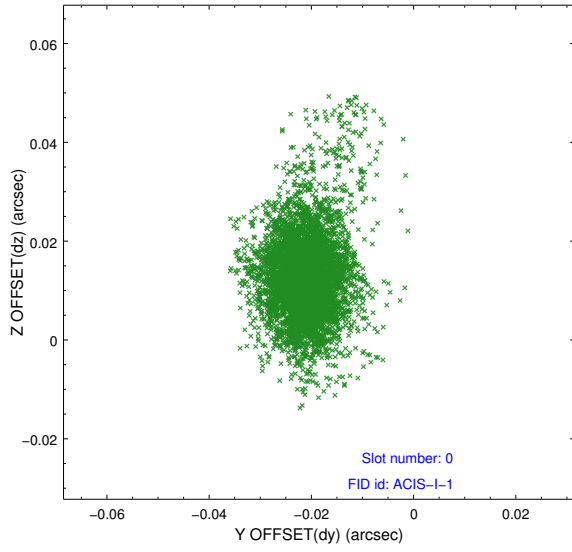


2.4.5 Slot 7

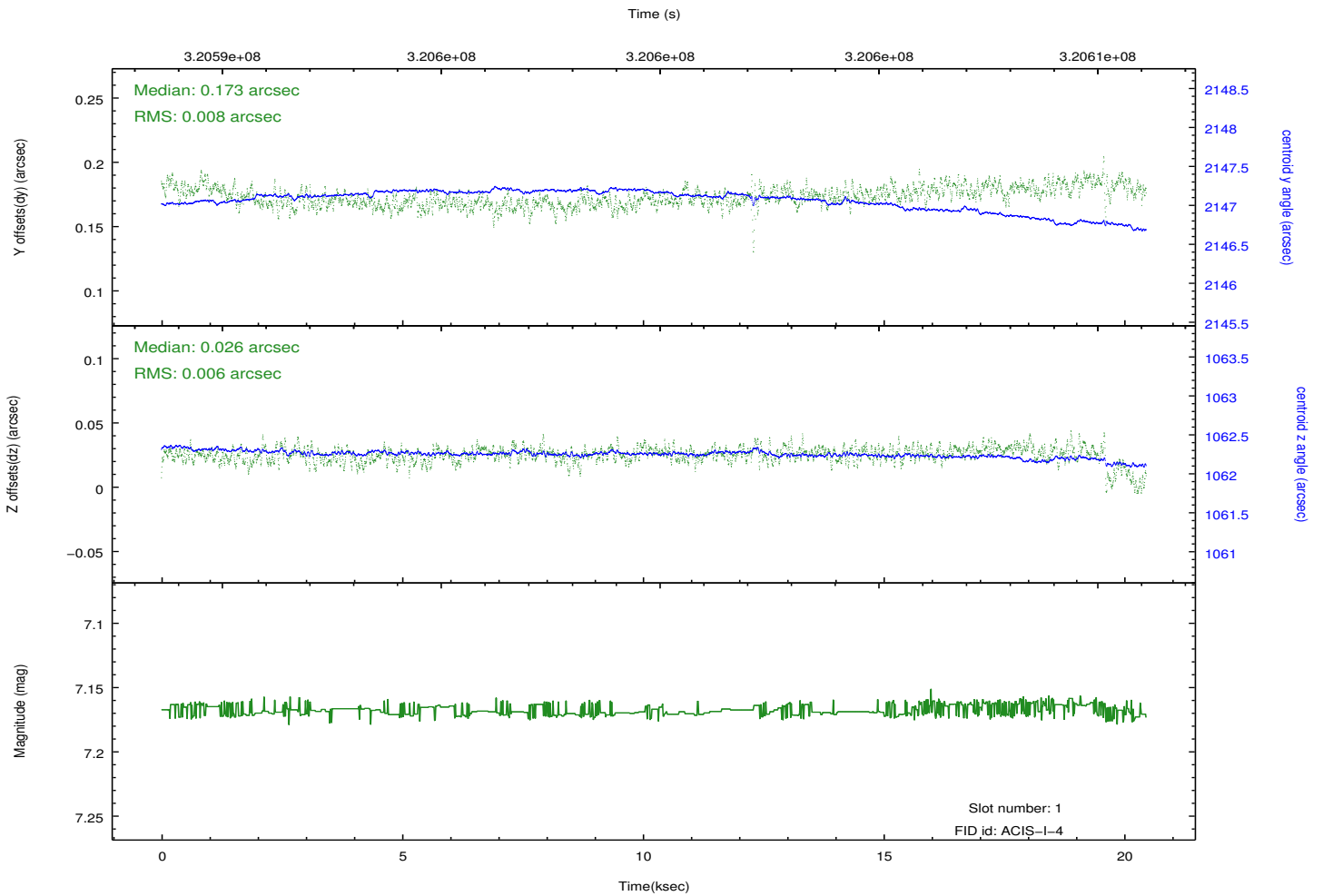
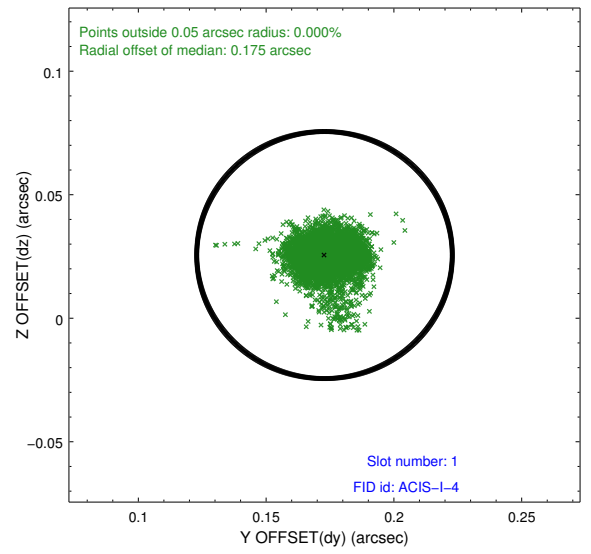
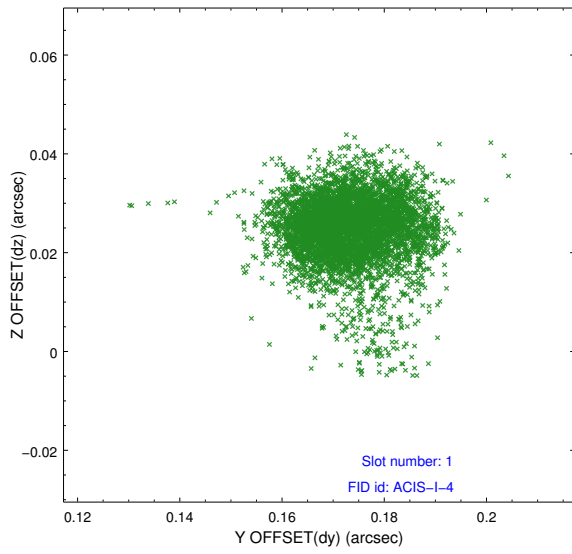


2.5 FID Slots

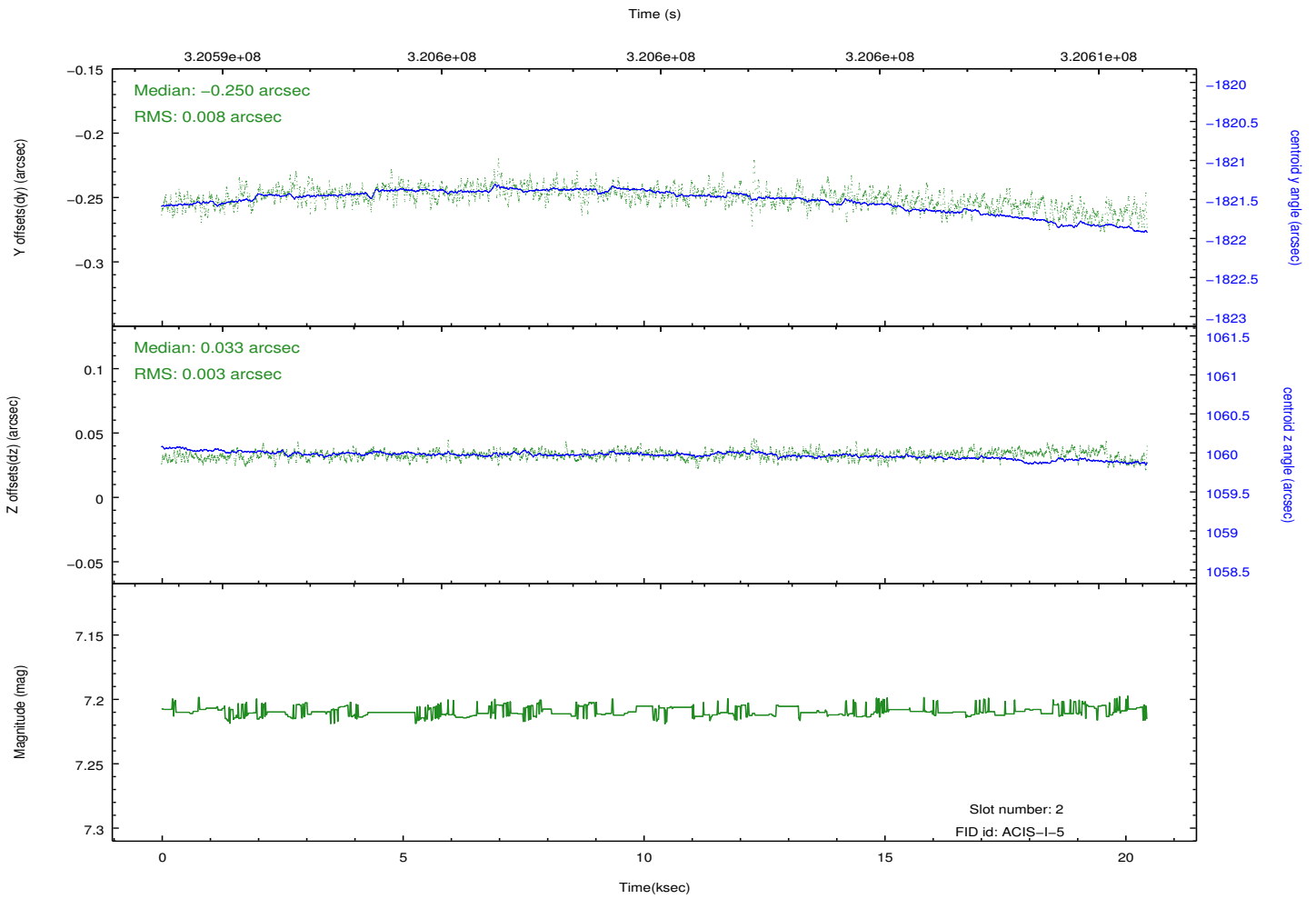
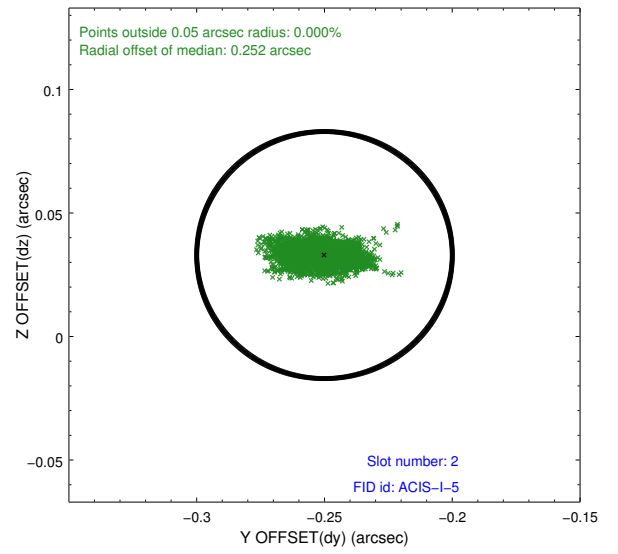
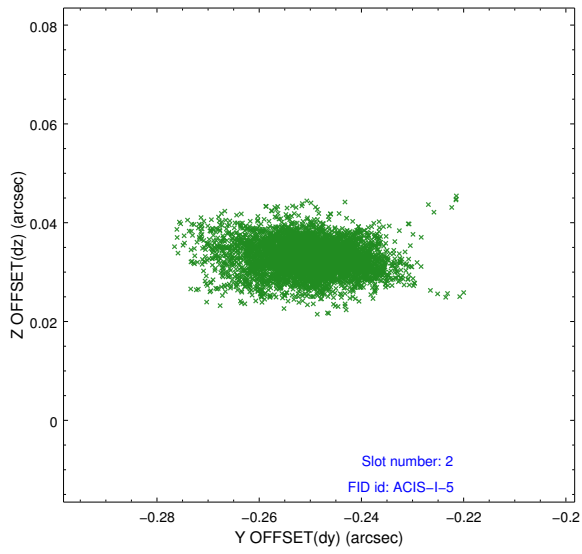
2.5.1 Slot 0



2.5.2 Slot 1



2.5.3 Slot 2



A Summary

A.1 Status

V&V Scientist	Jen Lauer
V&V Date (YYYY-MM-DD)	2012.05.13
V&V Edition	1
V&V Disposition and Status	OK
V&V Charge Time	20.0415999

A.2 Comments