

V&V Reference Report

L2 ASCDS Version : 8.4.4

Observation 9840 - L2 Version 2
Chandra X-Ray Center

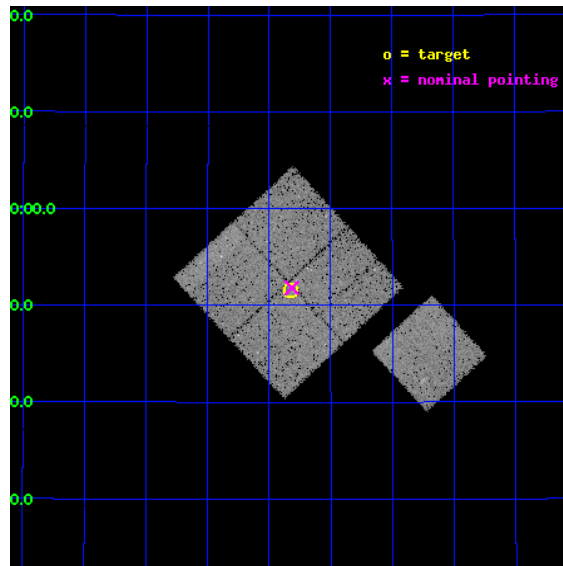
L2 Processing Date : May 11 2012

Contents

1	Front	2
2	OBI	3
2.1	OBI	3
2.1.1	Images	3
2.1.2	Bias	3
2.1.3	Parameters	4
2.1.4	Events	4
2.2	Compared Parameters	5
2.3	Aspect	6
2.4	Star Slots	9
2.4.1	Slot 3	9
2.4.2	Slot 4	10
2.4.3	Slot 5	11
2.4.4	Slot 6	12
2.4.5	Slot 7	13
2.5	FID Slots	14
2.5.1	Slot 0	14
2.5.2	Slot 1	15
2.5.3	Slot 2	16
A	Summary	17
A.1	Status	17
A.2	Comments	17

1 Front

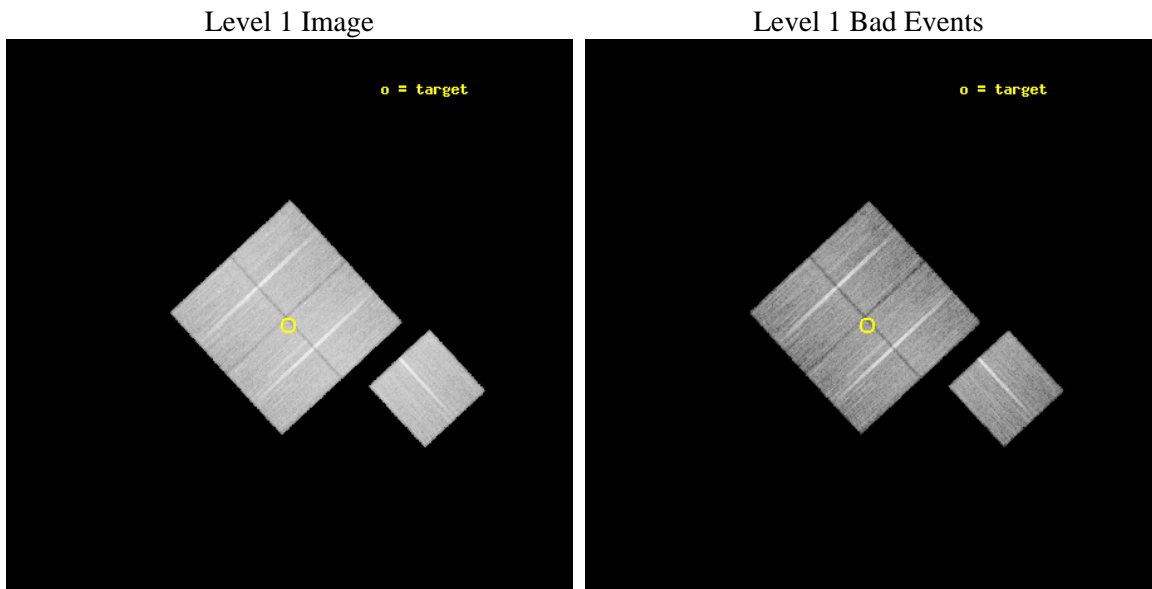
seq_num	800740	Sequence number
obs_id	9840	Observation id
title	The Active Galaxy Population in a Supercluster at z = 0.7	Proposal
observer	Prof Lori Lubin	Principal investigator
object	SC1324+3051	Source name
dtcycle	0	
cycle	P	events from which exps? Prim/Second/Both
ra_targ	201.20625	Observer's specified target RA [deg]
dec_targ	30.859472	Observer's specified target Dec [deg]
ra_nom	201.20390964565	Nominal RA [deg]
dec_nom	30.863724453689	Nominal Dec [deg]
roll_nom	137.20988799519	Nominal Roll [deg]
revision	2	Processing version of data
ontime	21736.762749434	Sum of GTIs [s]
livetime	21452.75594174	Livetime [s]
ontime0	21742.921629965	Sum of GTIs [s]
ontime1	21736.680689216	Sum of GTIs [s]
ontime2	21739.862719715	Sum of GTIs [s]
ontime3	21736.762749434	Sum of GTIs [s]
ontime6	21739.739589632	Sum of GTIs [s]
l2events	74823	Number of level 2 events



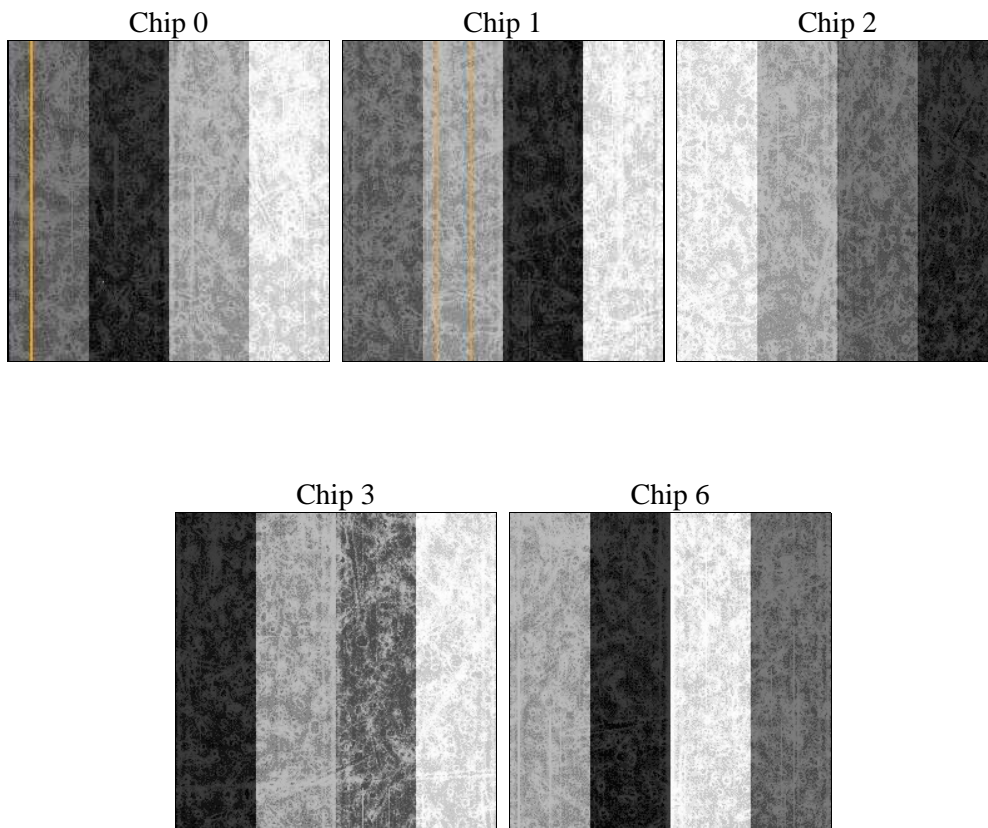
2 OBI

2.1 OBI

2.1.1 Images



2.1.2 Bias



2.1.3 Parameters

obi_num	0	Obi number	sched_exp_time	21700.000000	[s] Scheduled observation exposure time
ascdsver	8.4.4	Processing system revision	ontime	21736.762749434	Sum of GTIs [s]
caldbver	4.4.9	 	ontime0	21742.921629965	Sum of GTIs [s]
date	2012-05-12T00:27:19	Date and time of file creation	ontime1	21736.680689216	Sum of GTIs [s]
revision	2	Processing version of data	ontime2	21739.862719715	Sum of GTIs [s]
			ontime3	21736.762749434	Sum of GTIs [s]
			ontime6	21739.739589632	Sum of GTIs [s]
			l1events	862702	Number of level 1 events

2.1.4 Events

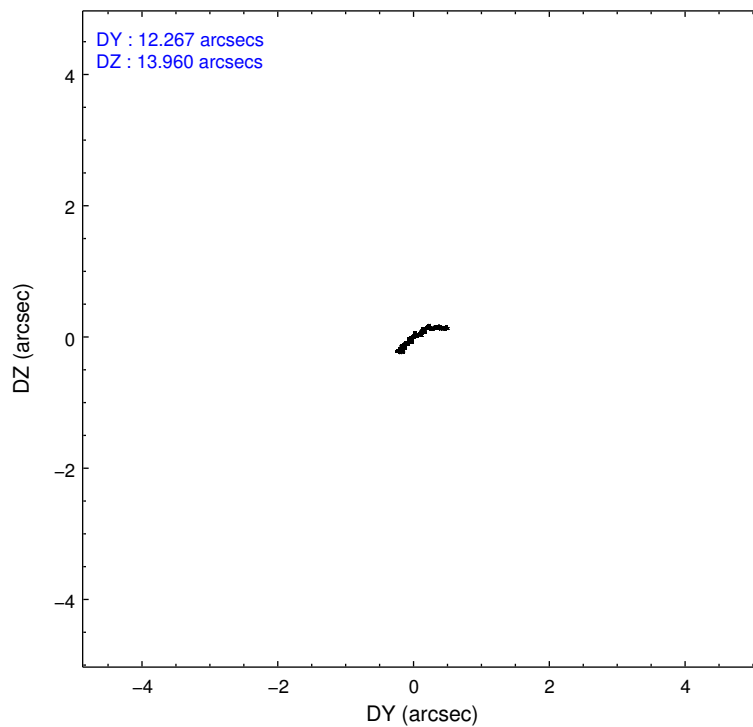
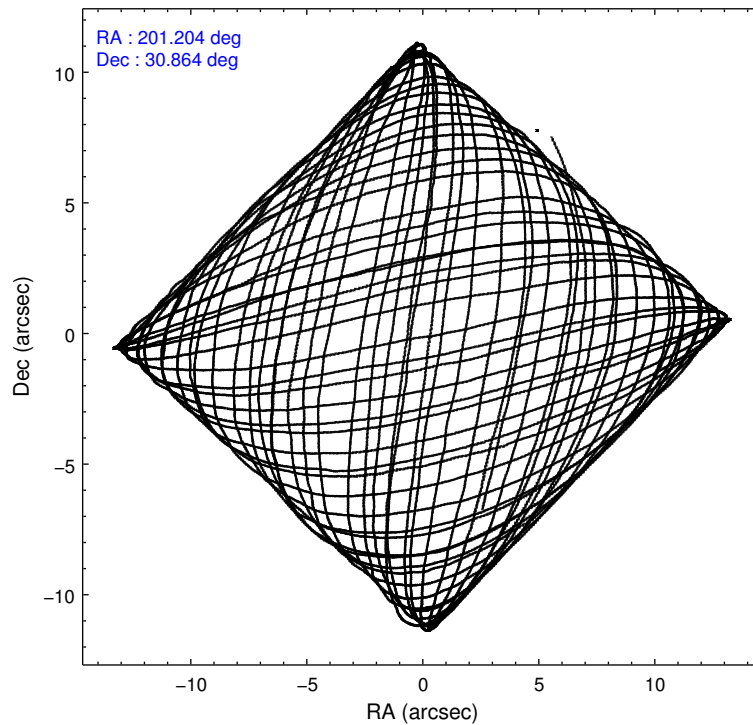
	ccd 0	ccd 1	ccd 2	ccd 3	ccd 6
level 1 events	161613	167979	181872	175796	175442
rejected events	143591	148322	164410	159238	157371
rejected %	88%	88%	90%	90%	89%

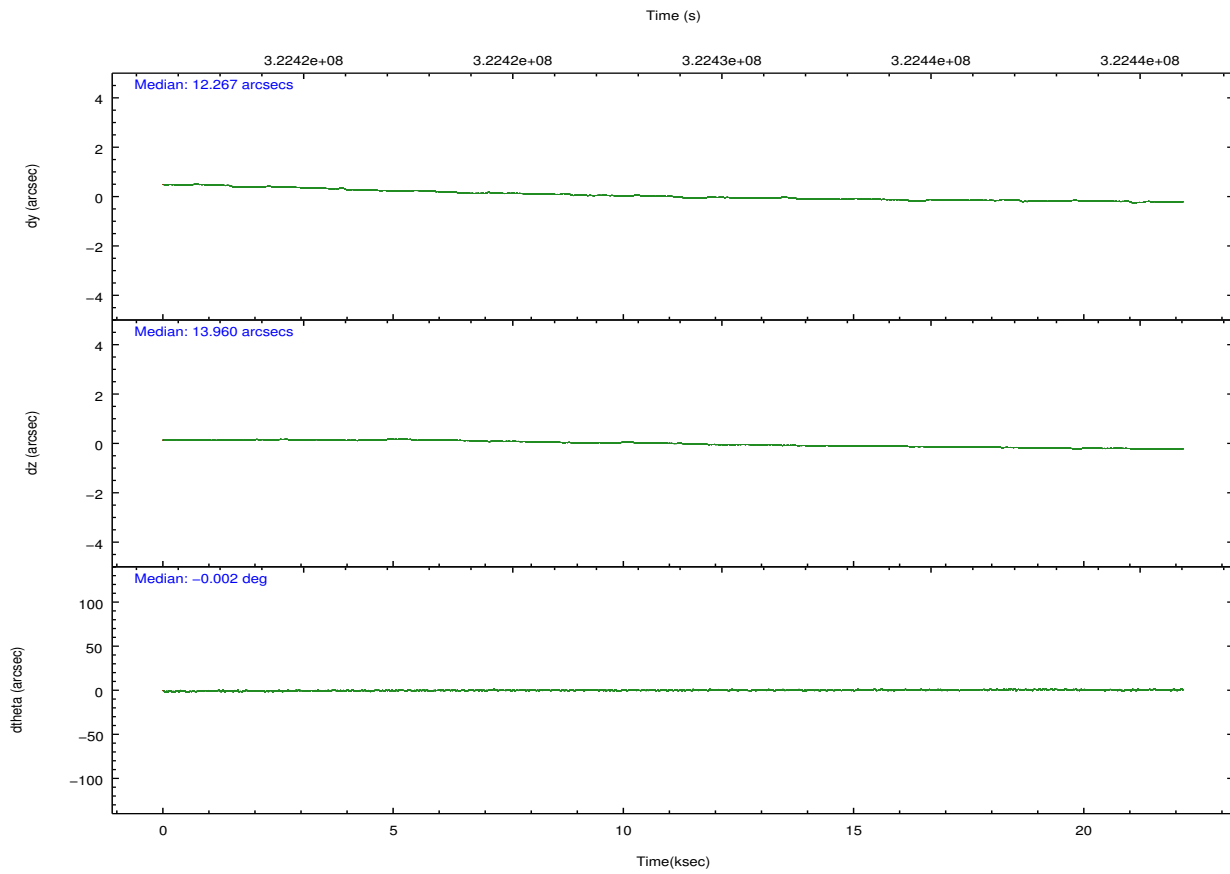
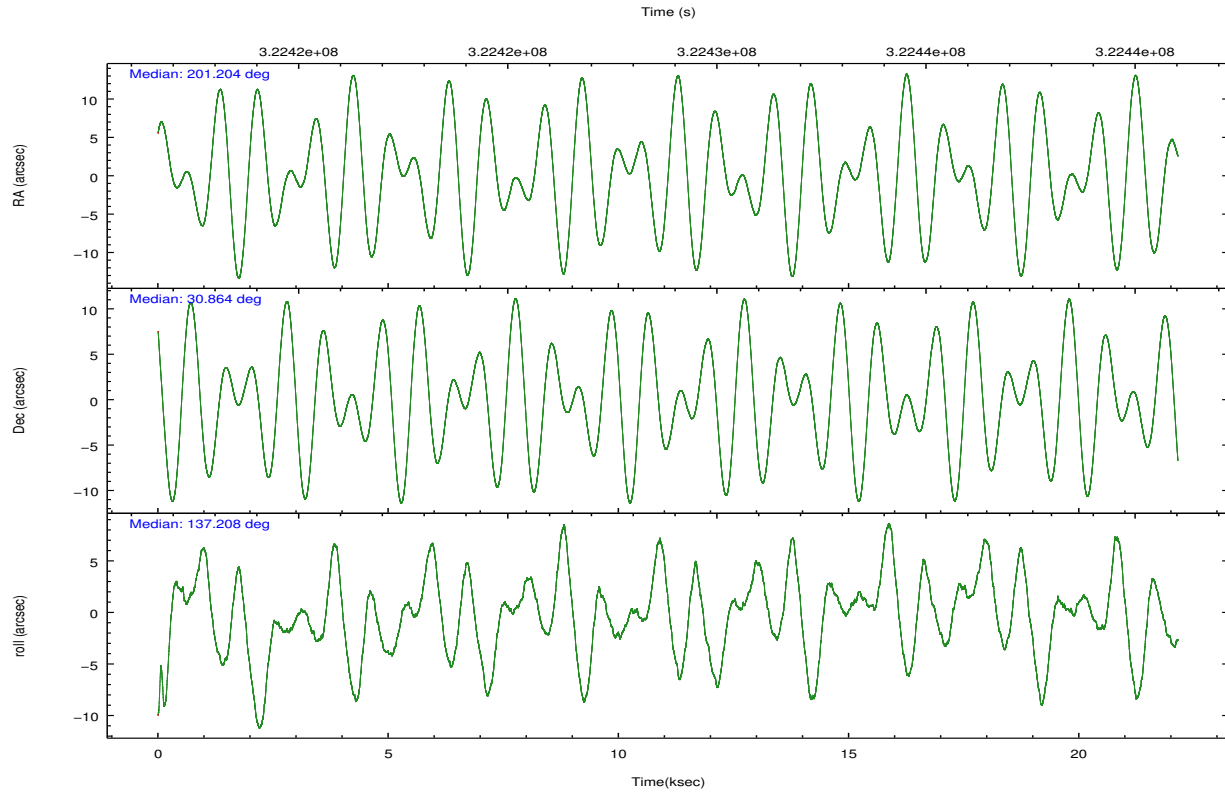
	ccd 0	ccd 1	ccd 2	ccd 3	ccd 6
grade 0 events	6377	7109	6251	5859	6392
	3%	4%	3%	3%	3%
grade 1 events	106	103	100	97	70
	0%	0%	0%	0%	0%
grade 2 events	4409	4490	4158	3635	3983
	2%	2%	2%	2%	2%
grade 3 events	1945	2031	1892	1868	1958
	1%	1%	1%	1%	1%
grade 4 events	1872	2089	1906	1813	1946
	1%	1%	1%	1%	1%
grade 5 events	6350	6761	5987	7336	7143
	3%	4%	3%	4%	4%
grade 6 events	3423	3948	3257	3385	3794
	2%	2%	1%	1%	2%
grade 7 events	137131	141448	158321	151803	150156
	84%	84%	87%	86%	85%

2.2 Compared Parameters

Parameter	Planned	Actual	Parameter	Planned	Actual
Instrument	ACIS	ACIS	Obspar format version number	7	7
Detector	ACIS-01236	ACIS-01236	Obspar file type	PREDICTED	ACTUAL
Grating	NONE	NONE	Obspar update status	NONE	UPDATED
Data mode	VFAINT	VFAINT	CCD I0 on	Y	Y
Observation mode	POINTING	POINTING	CCD I1 on	Y	Y
[deg] Pointing RA	201.235170	201.2039096456494	CCD I2 on	Y	Y
[deg] Pointing Dec	30.857735	30.86372445368897	CCD I3 on	Y	Y
[deg] Pointing Roll	136.985172	137.2098879951868	CCD S0 on	N	N
[mm] SIM focus pos	-0.782348	-0.7809083437167272	CCD S1 on	N	N
[mm] SIM defocus	0	0.001439871863259334	CCD S2 on	O1	Y
[mm] SIM translation stage pos	-233.592463	-233.5874344608287	CCD S3 on	N	N
[mm] SIM translation stage offset	0	-0.005018542100998502	CCD S4 on	N	N
[s] Observation start time (MET)	322418213.184000	322417154.52446	CCD S5 on	N	N
Observation start date	2008-03-20T16:35:48	2008-03-20T16:19:14	Number of optional ACIS chips dropped	0	0
[s] Observation end time (MET)	322439913.184000	322440279.55058	On-chip summing requested	N	N
Observation end date	2008-03-20T22:37:28	2008-03-20T22:44:39	Subarray requested	NONE	NONE
Read mode	TIMED	TIMED	Alternating exposures requested	N	N
			[s] Primary exposure time	0.000000	3.1

2.3 Aspect



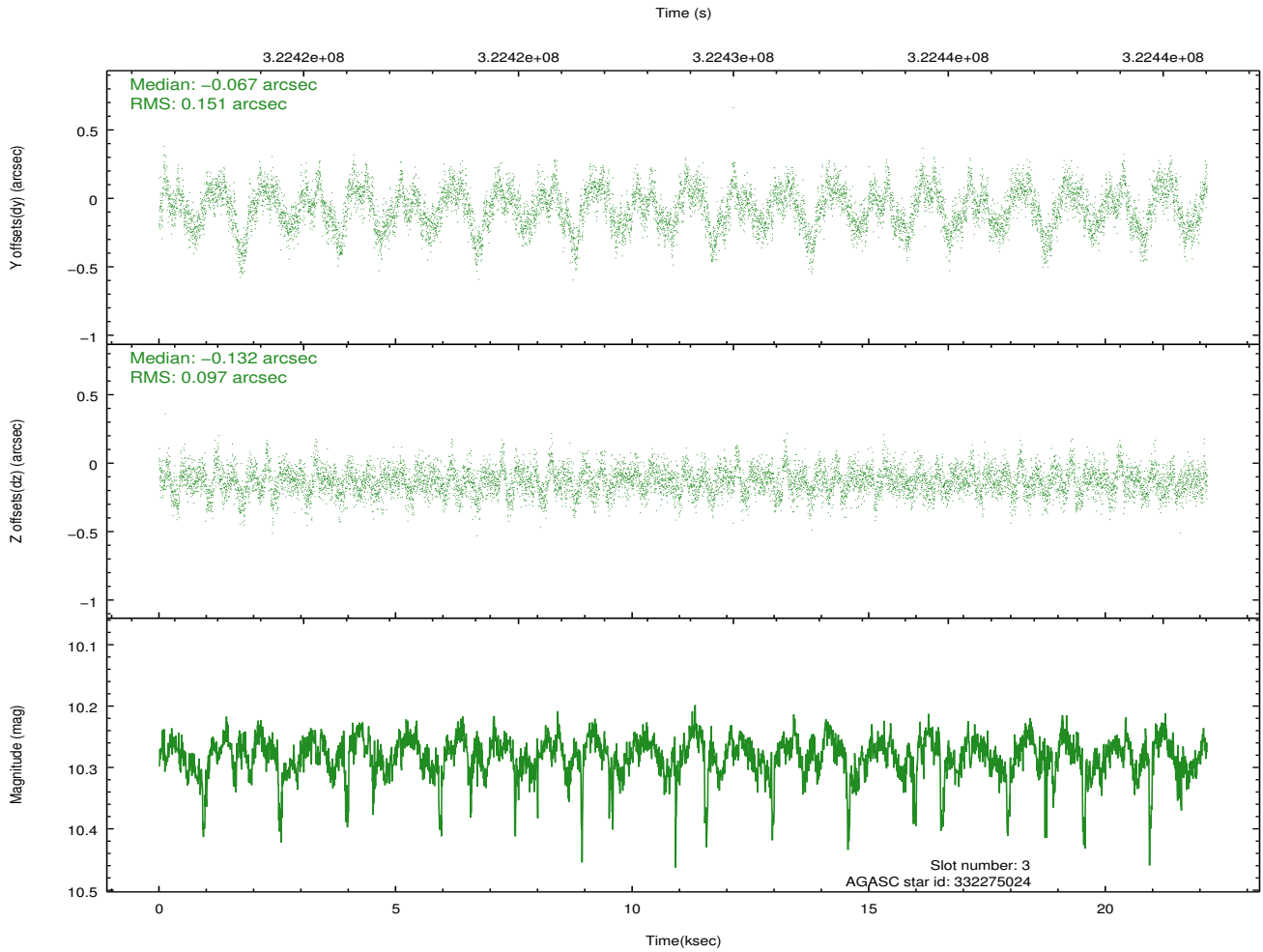
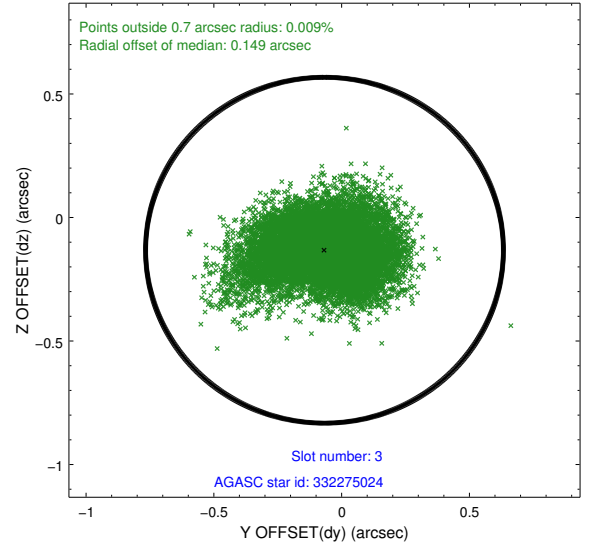
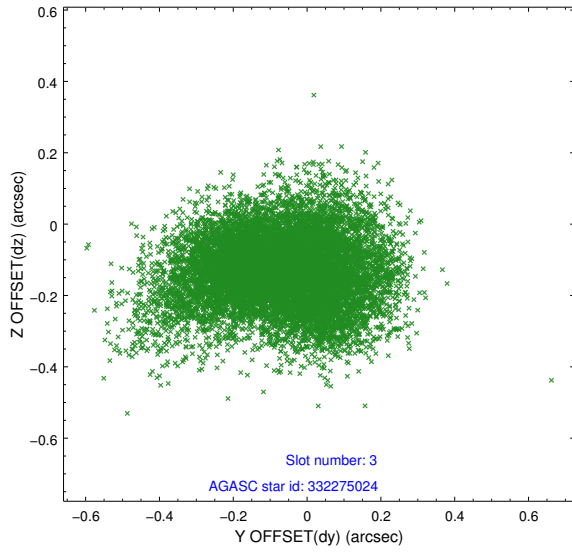


Slot Statistics

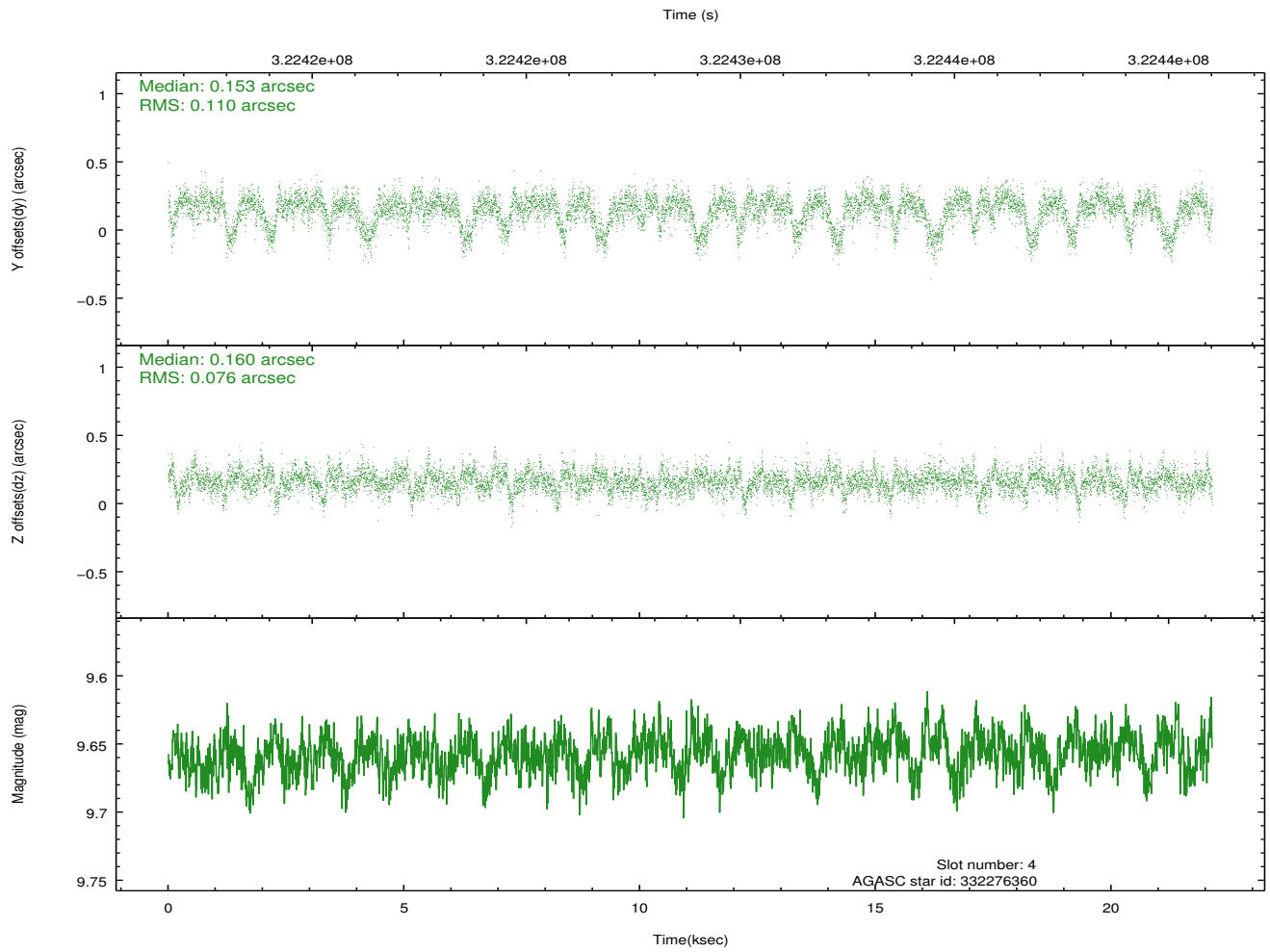
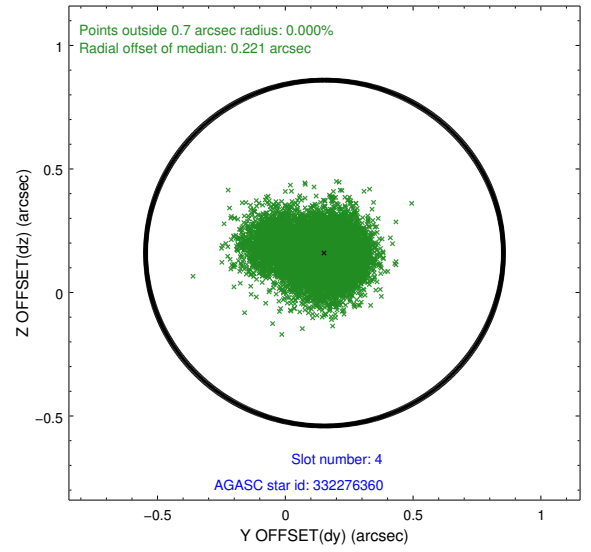
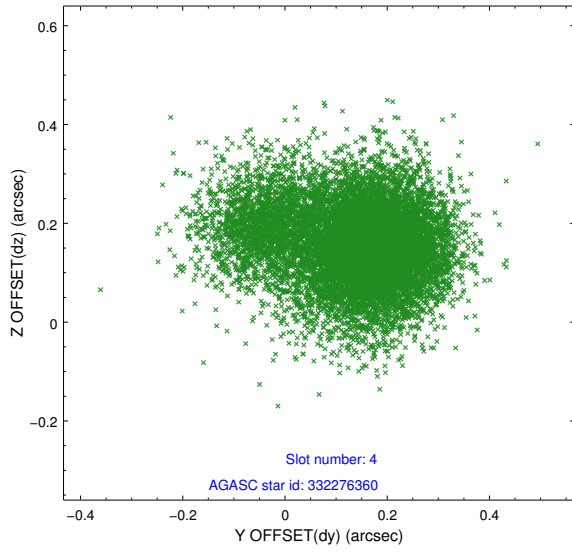
slot	status	id	mag	n_pts	med_dy	med_dz	dr1	dr2	ra	dec	mean_y	mean_z
0	FID	ACIS-I-1	7.23	5402	0.022	0.017	0.007	0.011	0.000000	0.000000	927.24	-837.50
1	FID	ACIS-I-5	7.22	5401	-0.184	0.038	0.009	0.014	0.000000	0.000000	-1820.99	1059.92
2	FID	ACIS-I-6	7.24	5402	0.070	0.015	0.010	0.016	0.000000	0.000000	392.66	1704.59
3	GUIDE	332275024	10.28	10781	-0.067	-0.132	0.190	0.309	200.716549	30.947068	1393.41	855.43
4	GUIDE	332276360	9.66	10791	0.153	0.160	0.137	0.248	200.487946	31.060060	2187.43	1034.36
5	GUIDE	332400040	8.92	10797	0.013	-0.021	0.107	0.161	201.663081	30.837002	-1015.84	-849.11
6	GUIDE	332401000	9.57	10784	0.070	-0.104	0.129	0.220	201.249948	30.730833	-345.33	303.76
7	GUIDE	332402160	8.15	10801	-0.153	0.109	0.086	0.169	201.528672	30.702288	-1044.67	-210.96

2.4 Star Slots

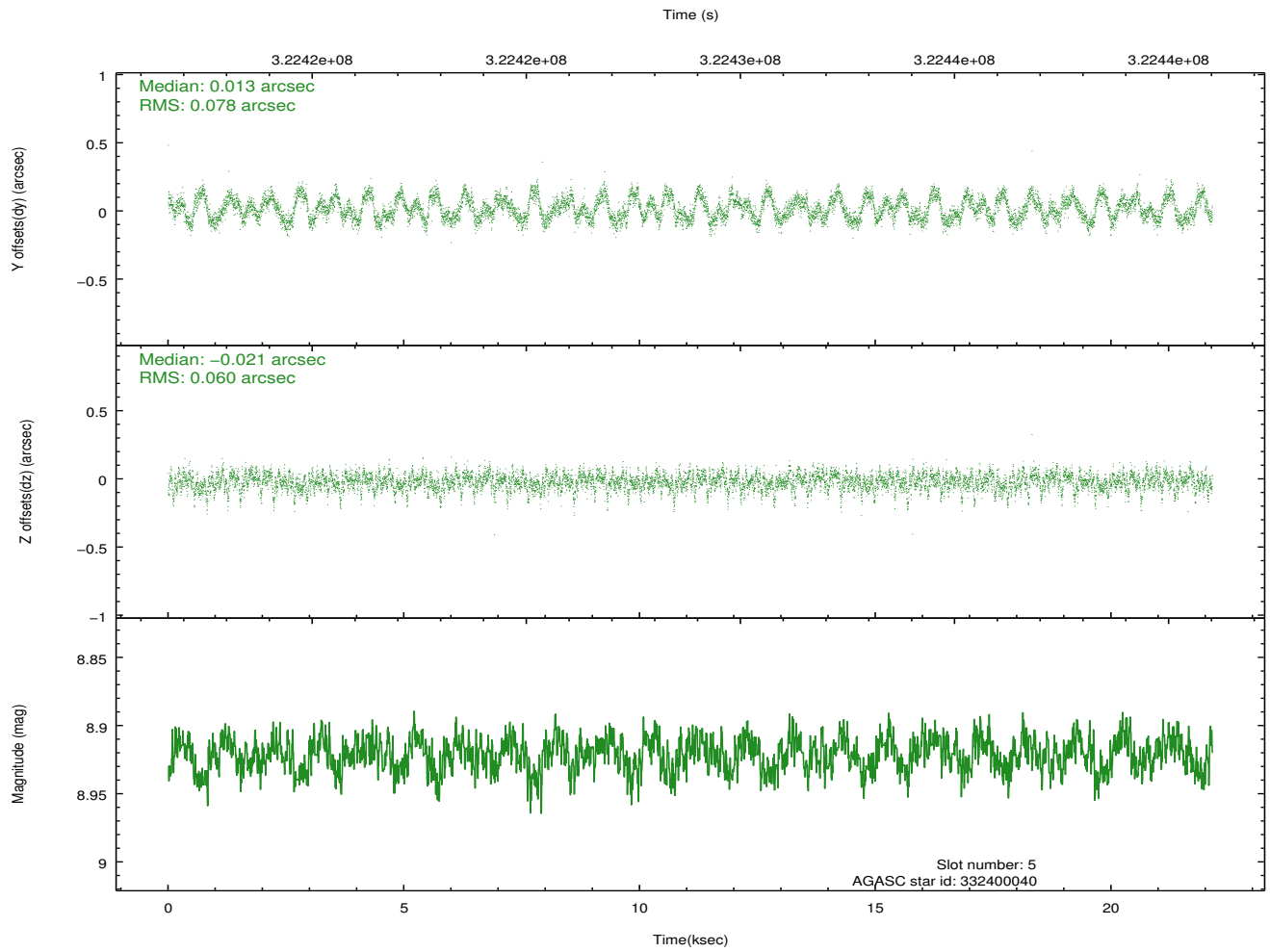
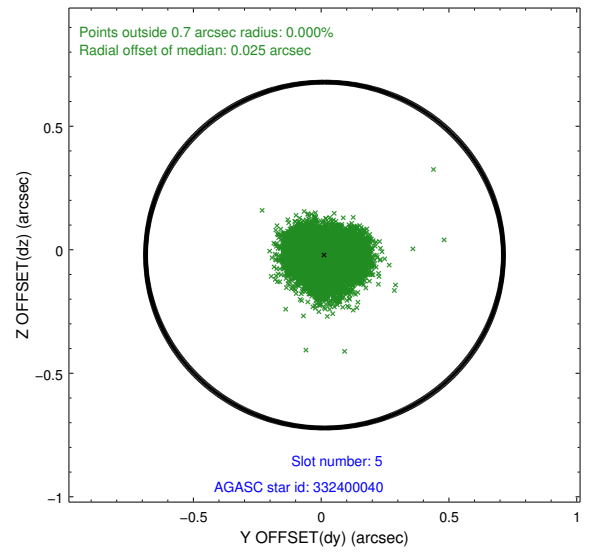
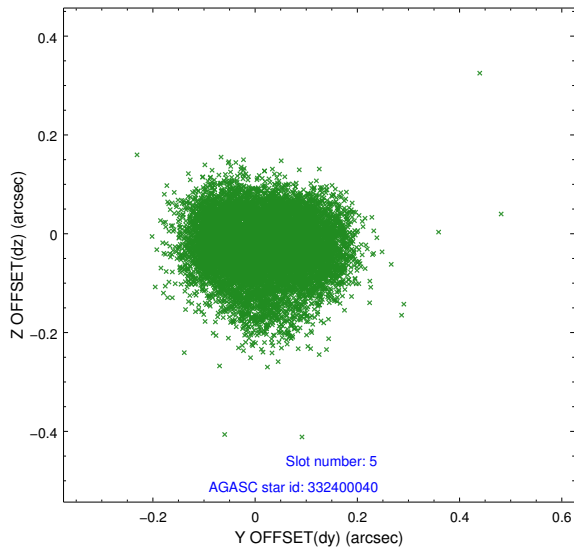
2.4.1 Slot 3



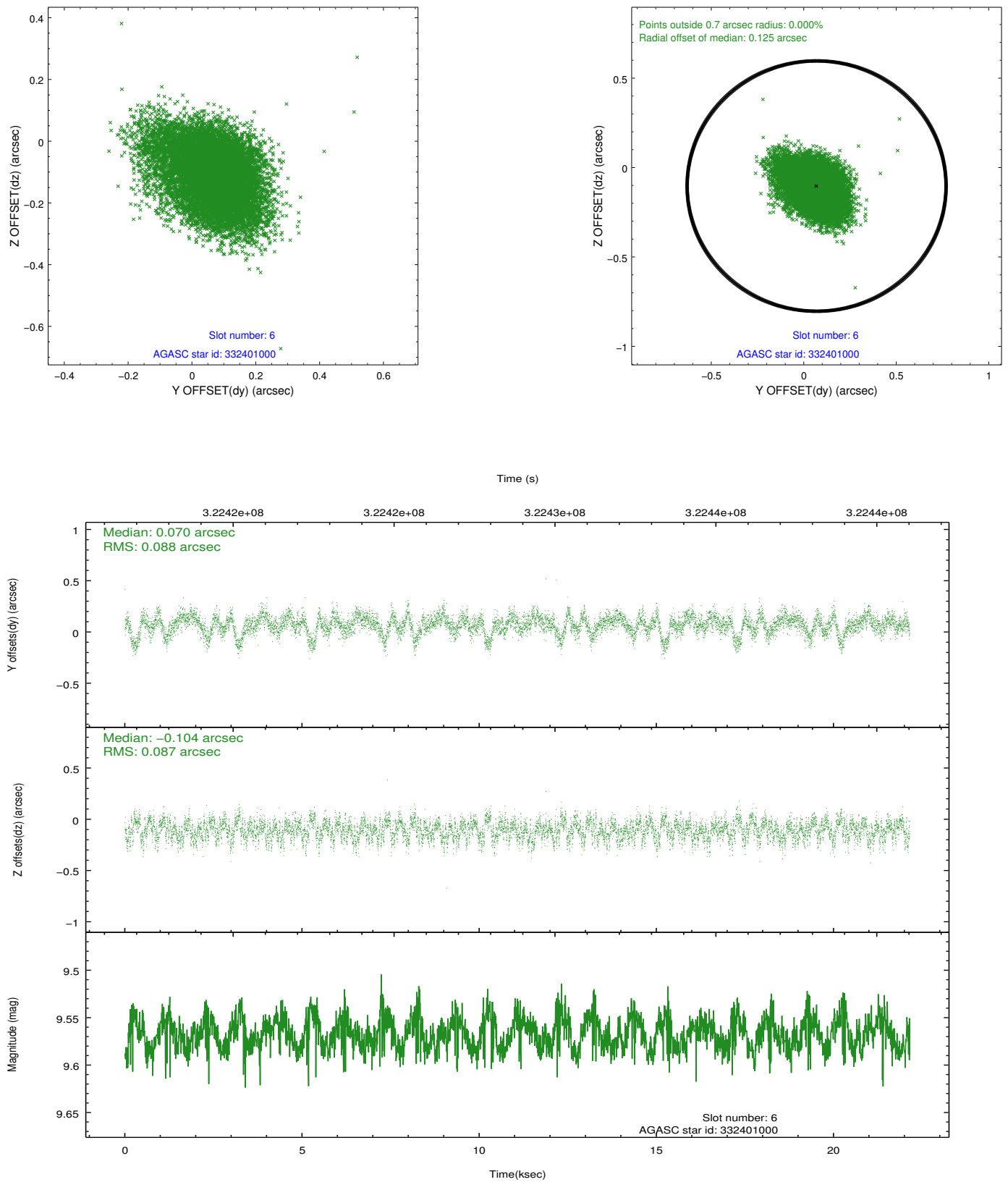
2.4.2 Slot 4



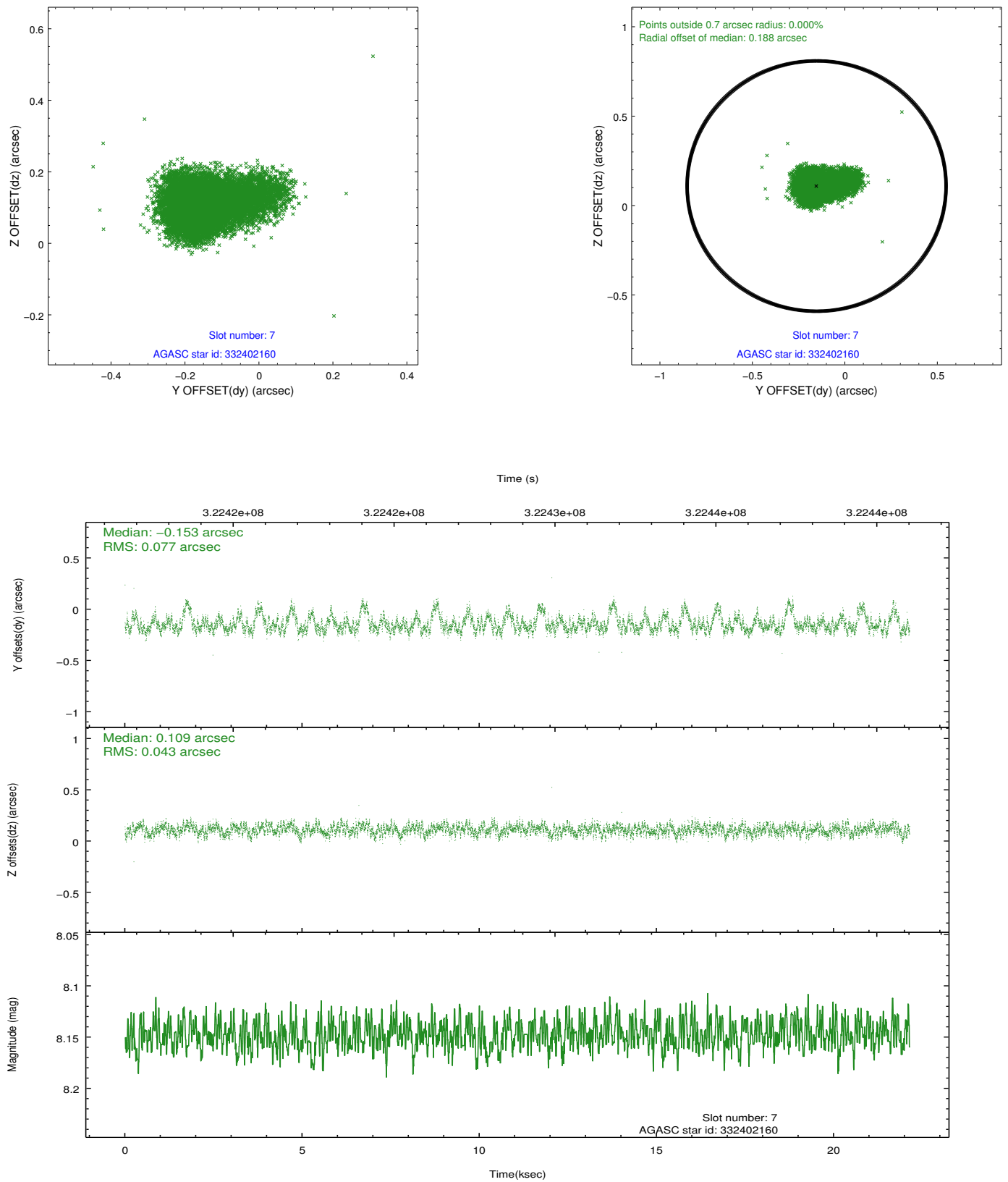
2.4.3 Slot 5



2.4.4 Slot 6

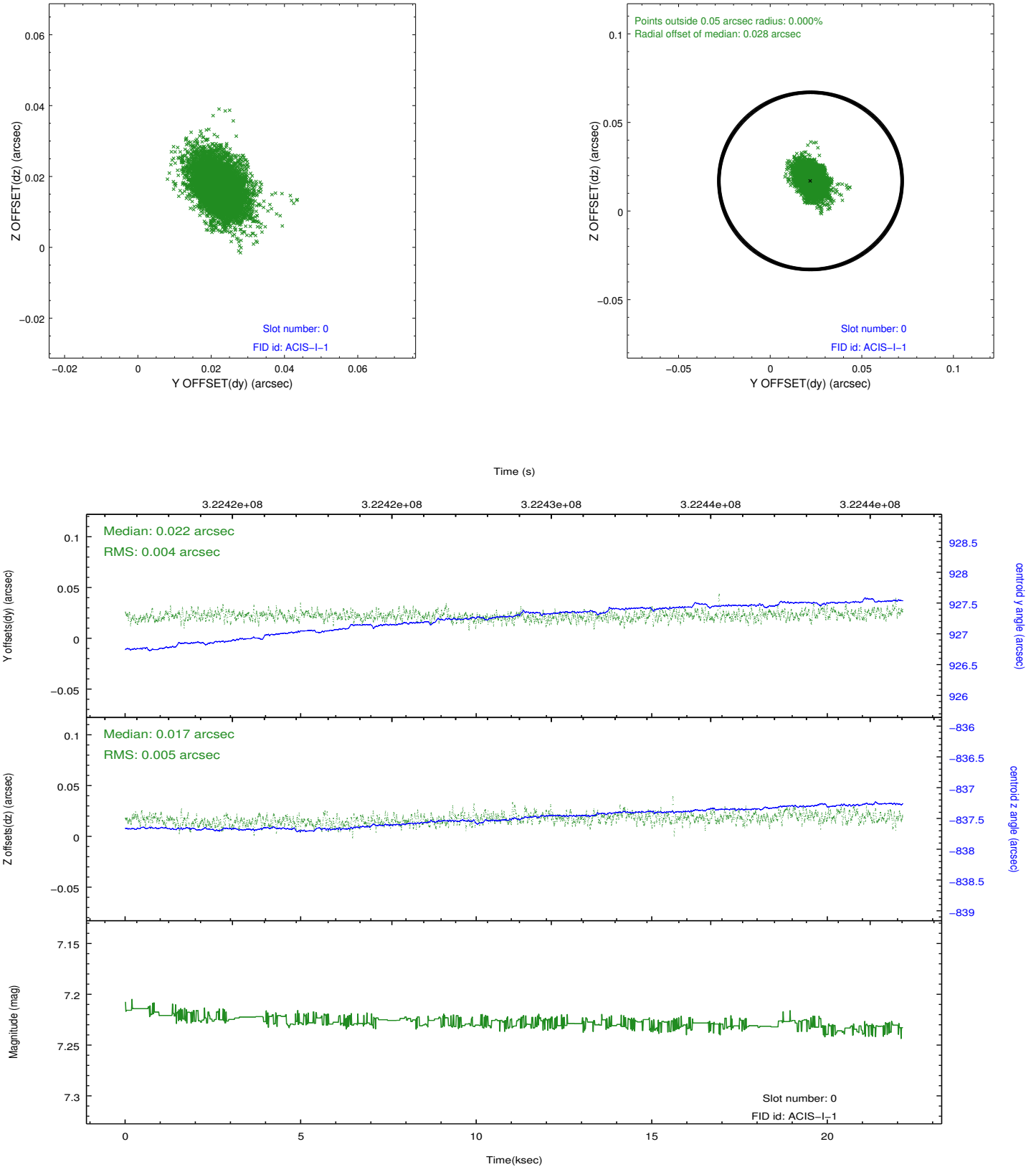


2.4.5 Slot 7

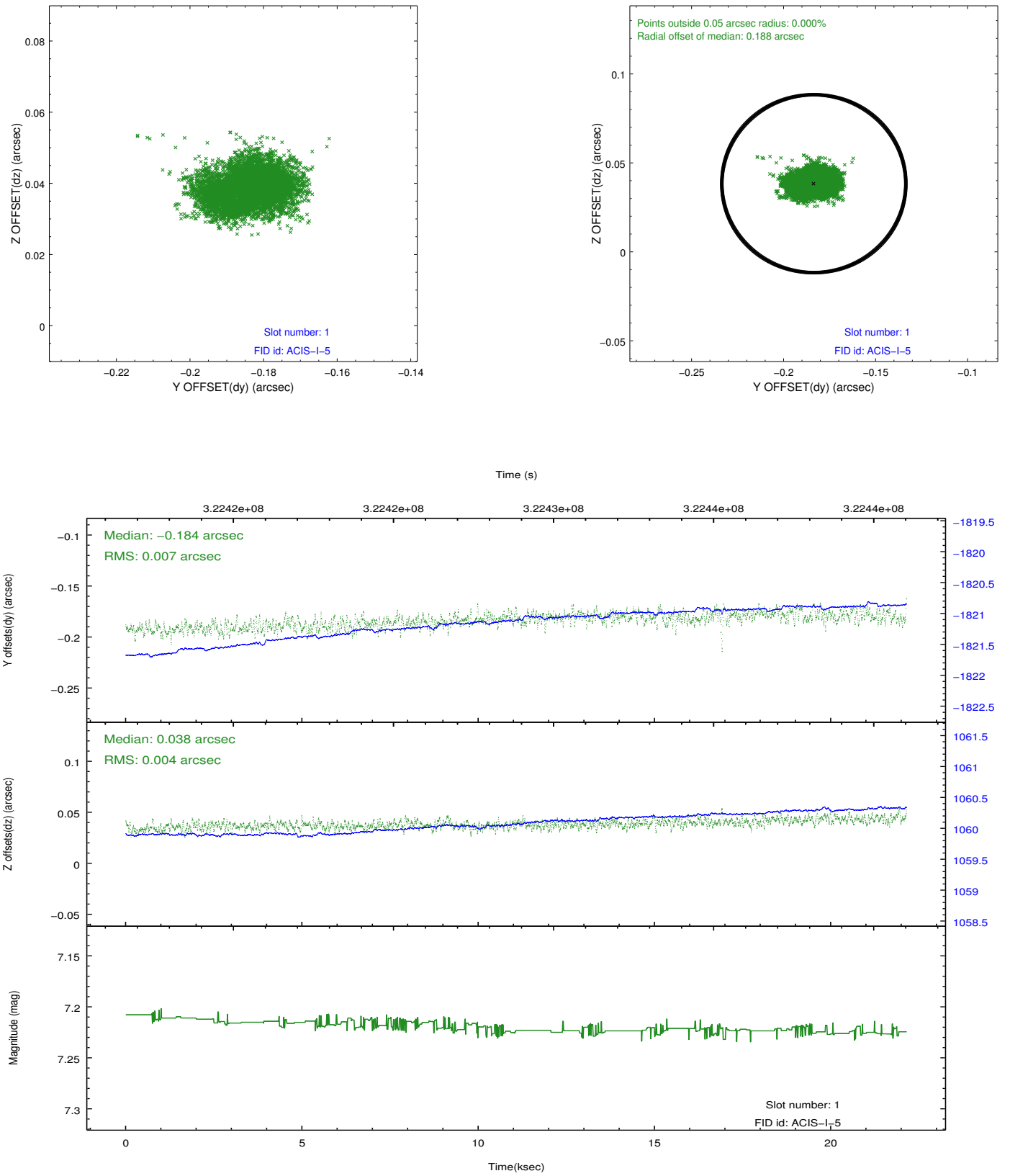


2.5 FID Slots

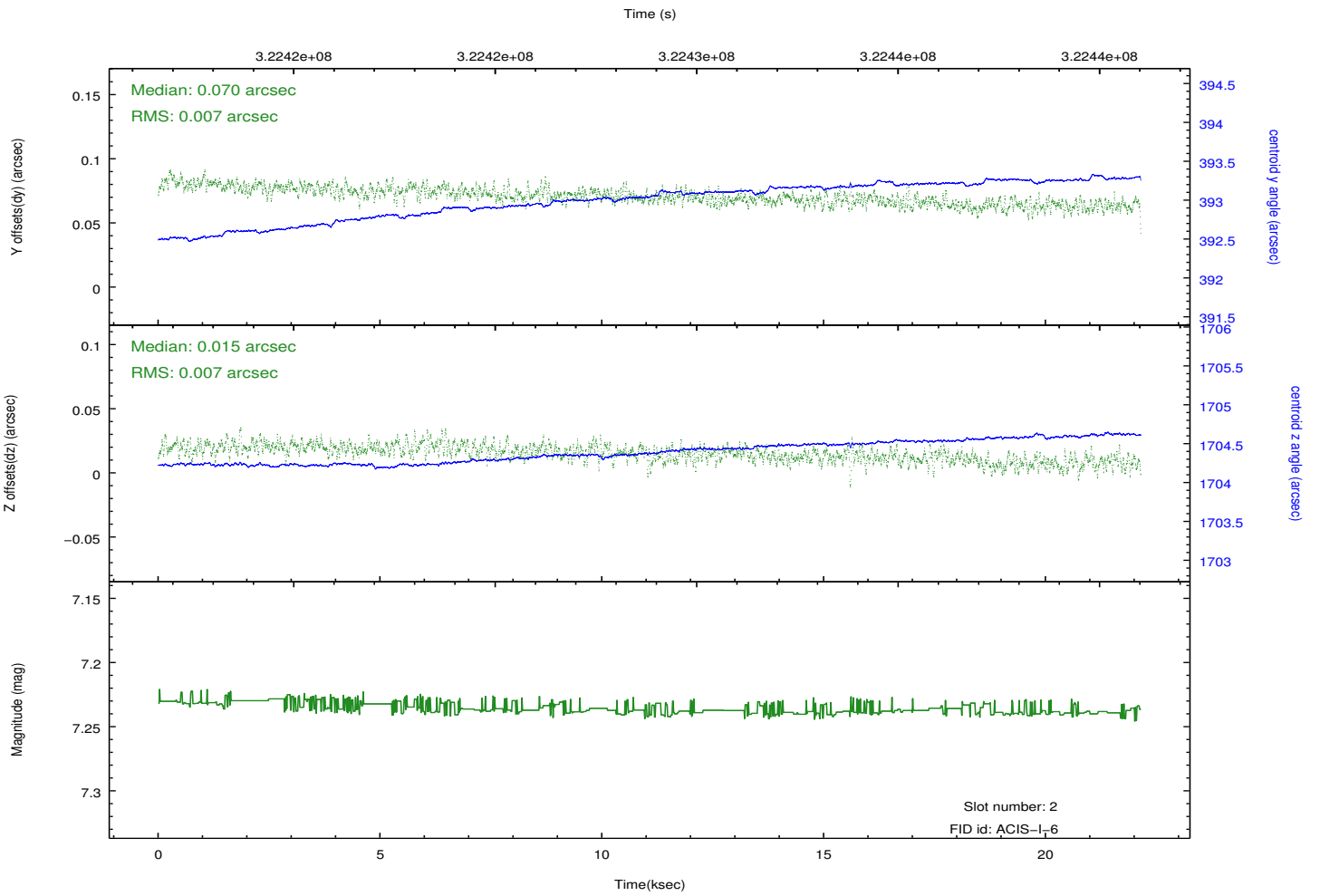
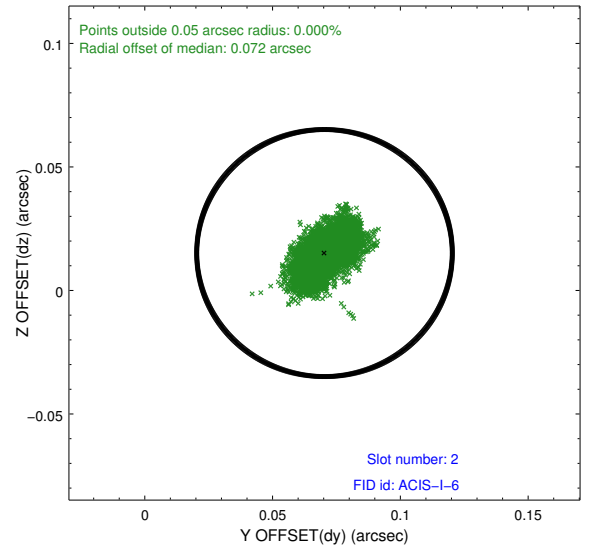
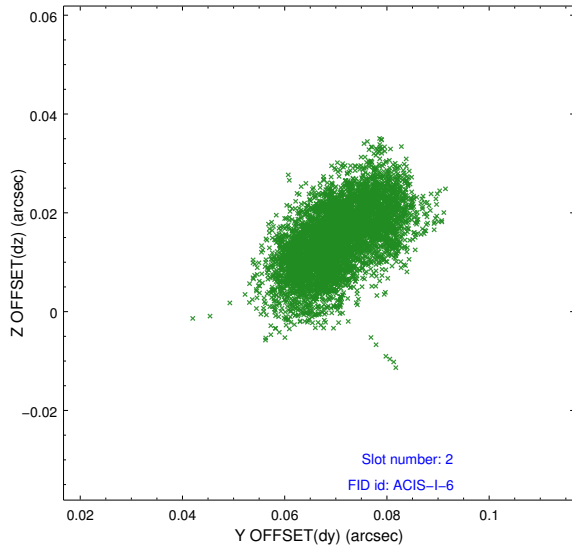
2.5.1 Slot 0



2.5.2 Slot 1



2.5.3 Slot 2



A Summary

A.1 Status

V&V Scientist	Jen Lauer
V&V Date (YYYY-MM-DD)	2012.05.14
V&V Edition	1
V&V Disposition and Status	OK
V&V Charge Time	21.7371181

A.2 Comments

Joint Proposal: NRAO