

V&V Reference Report

L2 ASCDS Version : 8.4.4

Observation 9970 - L2 Version 3
Chandra X-Ray Center

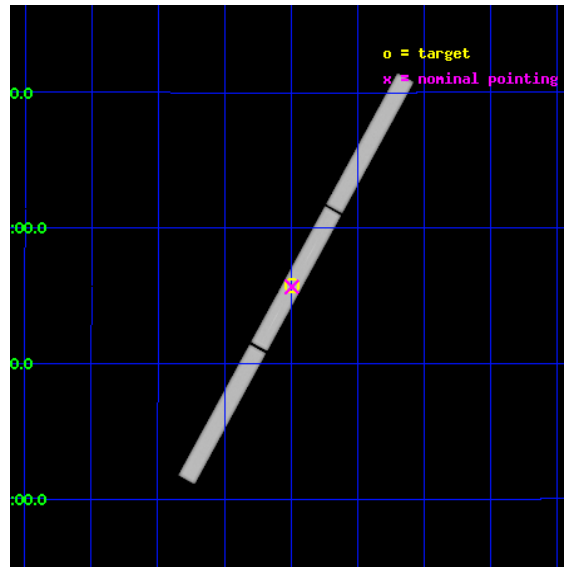
L2 Processing Date : Aug 13 2012

Contents

1	Front	2
2	OBI	3
2.1	OBI	3
2.1.1	Images	3
2.1.2	Parameters	4
2.1.3	Events	4
2.2	Compared Parameters	5
2.3	Aspect	6
2.4	Star Slots	9
2.4.1	Slot 3	9
2.4.2	Slot 4	10
2.4.3	Slot 5	11
2.4.4	Slot 6	12
2.4.5	Slot 7	13
2.5	FID Slots	14
2.5.1	Slot 0	14
2.5.2	Slot 1	15
2.5.3	Slot 2	16
3	Gratings	17
3.1	LETG Arm	17
A	Summary	19
A.1	Status	19
A.2	Comments	19

1 Front

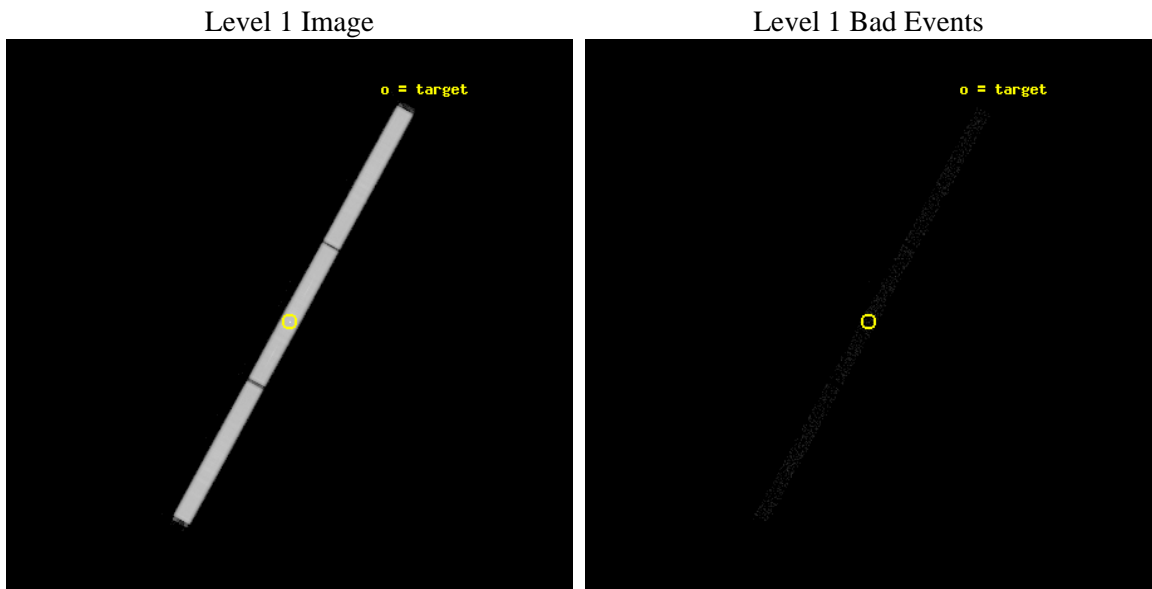
seq_num	300256	Sequence number
obs_id	9970	Observation id
title	Grating spectroscopy of a bright nova in outburst	Proposal title
observer	Dr Thomas Nelson	Principal investigator
object	CSS 081007:030559+054715	Source name
ra_targ	46.494167	Observer's specified target RA [deg]
dec_targ	5.7875	Observer's specified target Dec [deg]
ra_nom	46.496460485627	Nominal RA [deg]
dec_nom	5.7832703957735	Nominal Dec [deg]
roll_nom	298.81687598282	Nominal Roll [deg]
revision	3	Processing version of data
ontime	35162.626738846	[s]
livetime	34802.219183362	Ontime multiplied by DTCOR
l2events	3055433	Number of level 2 events



2 OBI

2.1 OBI

2.1.1 Images



2.1.2 Parameters

obi_num	0	Obi number	sched_exp_time	35000.000000	[s] Scheduled observation exposure time
ascdsver	8.4.5	Processing system revision	ontime	35162.626738846	[s]
caldbver	4.5.1.1	 	l1events	4062411	Number of level 1 events
date	2012-08-13T01:13:15	Date and time of file creation			
revision	3	Processing version of data			

2.1.3 Events

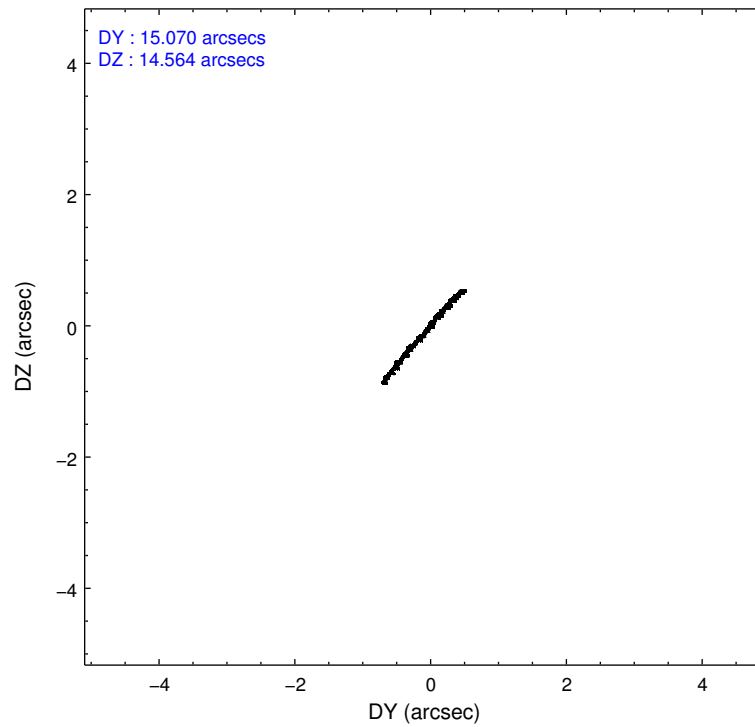
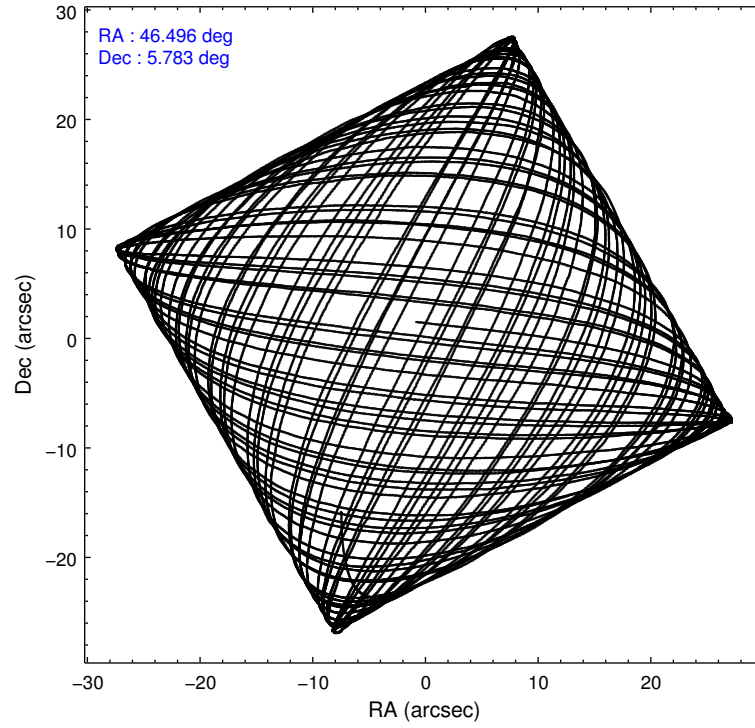
Level 1 Events

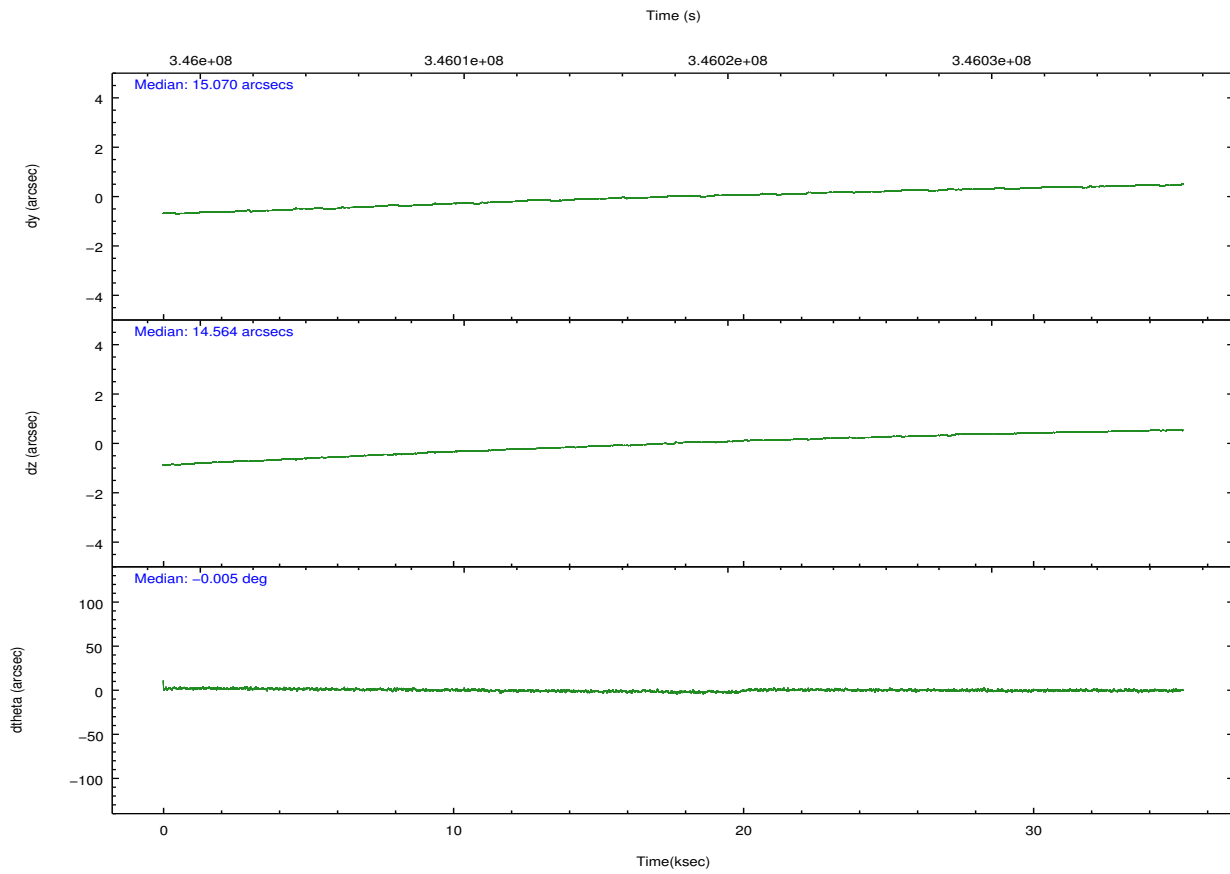
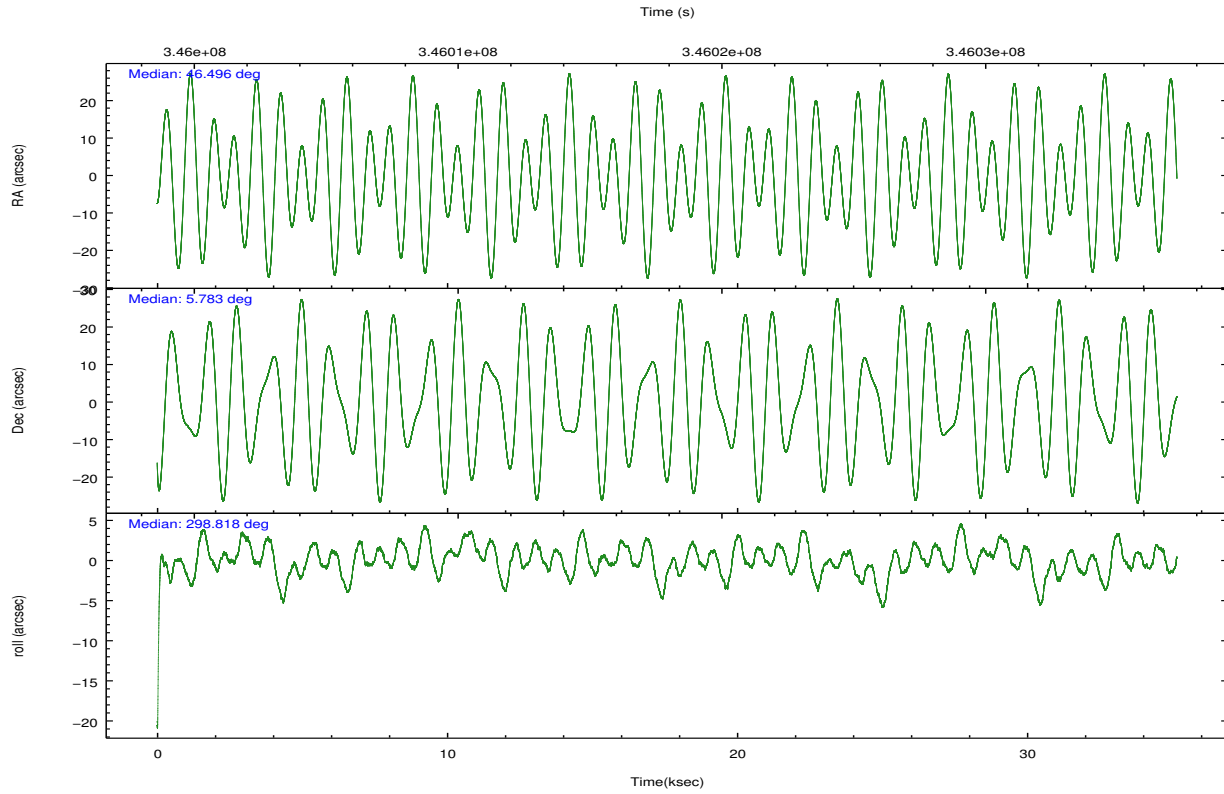
	segment 1	segment 2	segment 3
level 1 events	1352336	1352514	1357561
rejected events	32212	31720	32415
rejected %	2%	2%	2%

2.2 Compared Parameters

Parameter	Planned	Actual	Parameter	Planned	Actual
Instrument	HRC	HRC	Obspar format version number	7	7
Detector	HRC-S	HRC-S	Obspar file type	PREDICTED	ACTUAL
Grating	LETG	LETG	Obspar update status	NONE	UPDATED
Data mode	OBSERVING	OBSERVING			
Observation mode	POINTING	POINTING			
[deg] Pointing RA	46.471019	46.49646048562714			
[deg] Pointing Dec	5.796913	5.783270395773513			
[deg] Pointing Roll	298.752110	298.81687598282			
[mm] SIM focus pos	-1.429586	-1.428180813131781			
[mm] SIM defocus	0.1037507710433287	0.1051558262725154			
[mm] SIM translation stage pos	250.455976	250.466033080201			
[mm] SIM translation stage offset	0	-0.01005468664627074			
[s] Observation start time (MET)	346000501.184000	345999526.22804			
Observation start date	2008-12-18T15:13:56	2008-12-18T14:58:46			
[s] Observation end time (MET)	346035501.184000	346036353.96736			
Observation end date	2008-12-19T00:57:16	2008-12-19T01:12:33			

2.3 Aspect



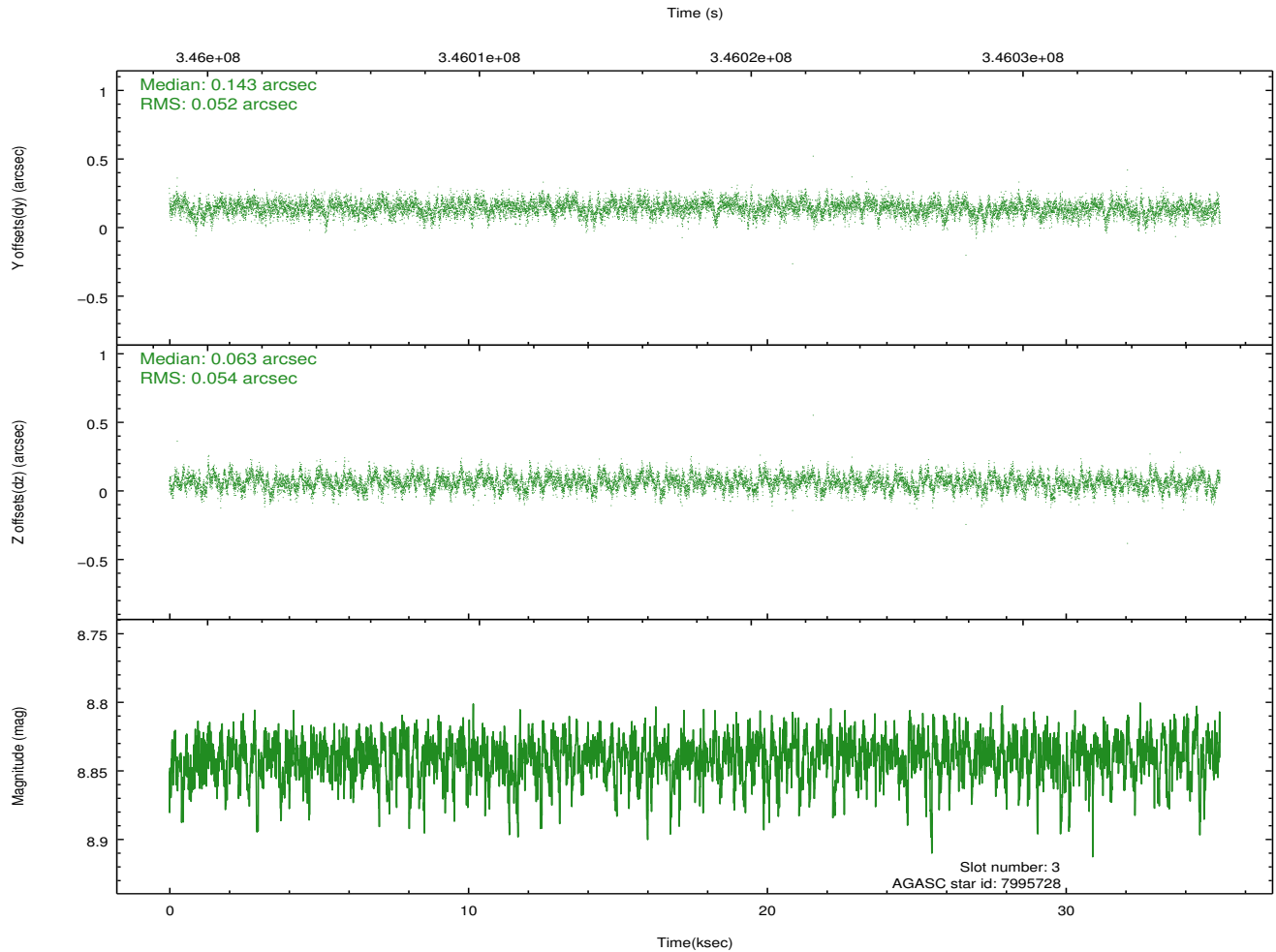
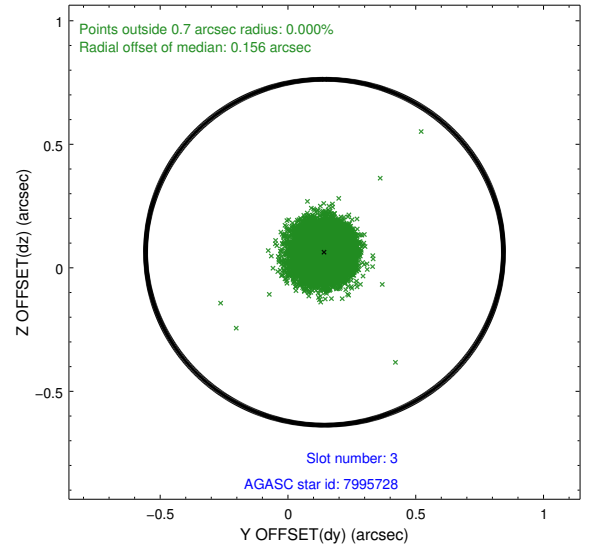
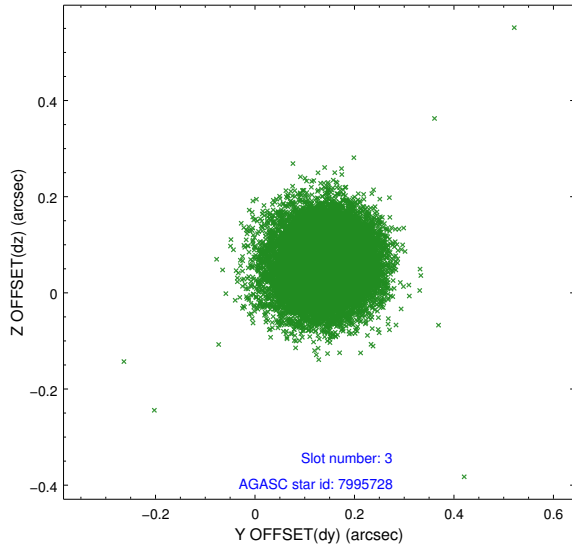


Slot Statistics

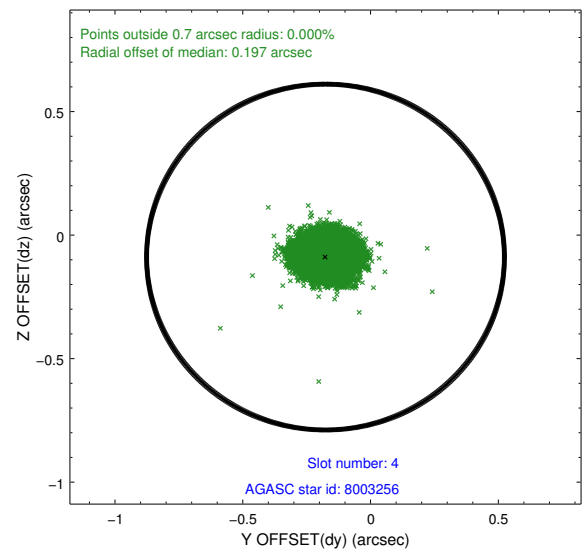
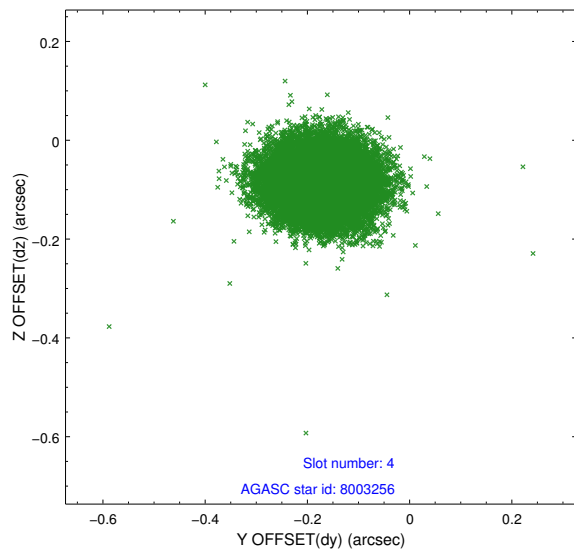
slot	status	id	mag	n_pts	med_dy	med_dz	dr1	dr2	ra	dec	mean_y	mean_z
0	FID	HRC-S-1	7.03	8577	0.018	-0.137	0.009	0.015	0.000000	0.000000	-1169.48	-463.35
1	FID	HRC-S-2	7.01	8577	0.173	-0.113	0.020	0.043	0.000000	0.000000	1230.22	-455.97
2	FID	HRC-S-4	6.98	8577	0.216	-0.054	0.016	0.032	0.000000	0.000000	1229.10	568.82
3	GUIDE	7995728	8.84	17140	0.143	0.063	0.080	0.128	47.034692	5.525622	1827.17	1301.63
4	GUIDE	8003256	7.33	17153	-0.176	-0.089	0.074	0.120	46.410339	6.117435	-1115.95	364.98
5	GUIDE	8003328	8.39	17147	0.131	-0.127	0.078	0.126	46.709156	5.650036	874.59	493.88
6	GUIDE	8004328	8.54	17133	0.034	0.073	0.082	0.134	46.582858	5.314720	1714.81	-483.35
7	GUIDE	8004896	9.68	17137	-0.127	0.083	0.136	0.228	46.440056	6.520849	-2337.89	1156.79

2.4 Star Slots

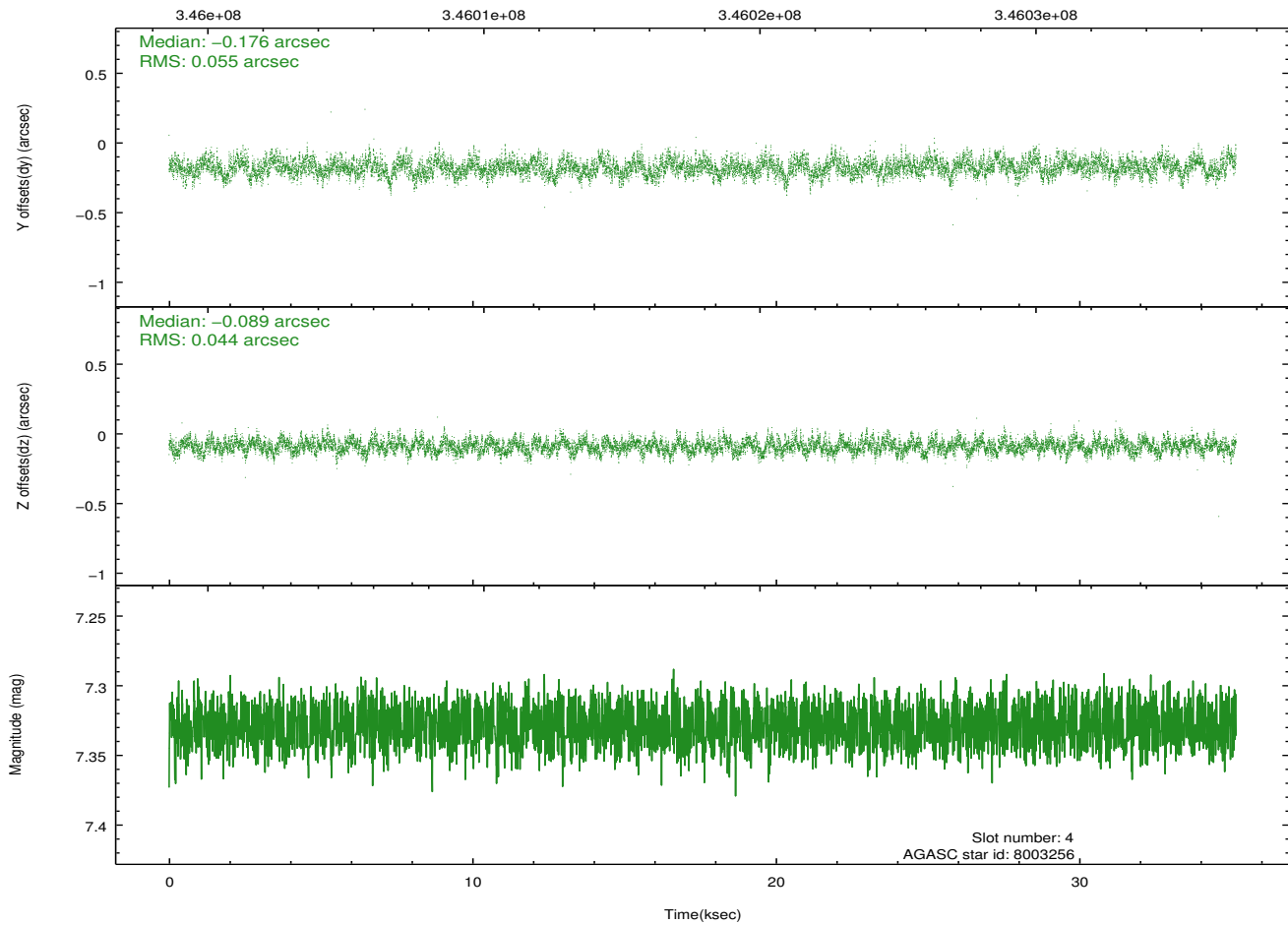
2.4.1 Slot 3



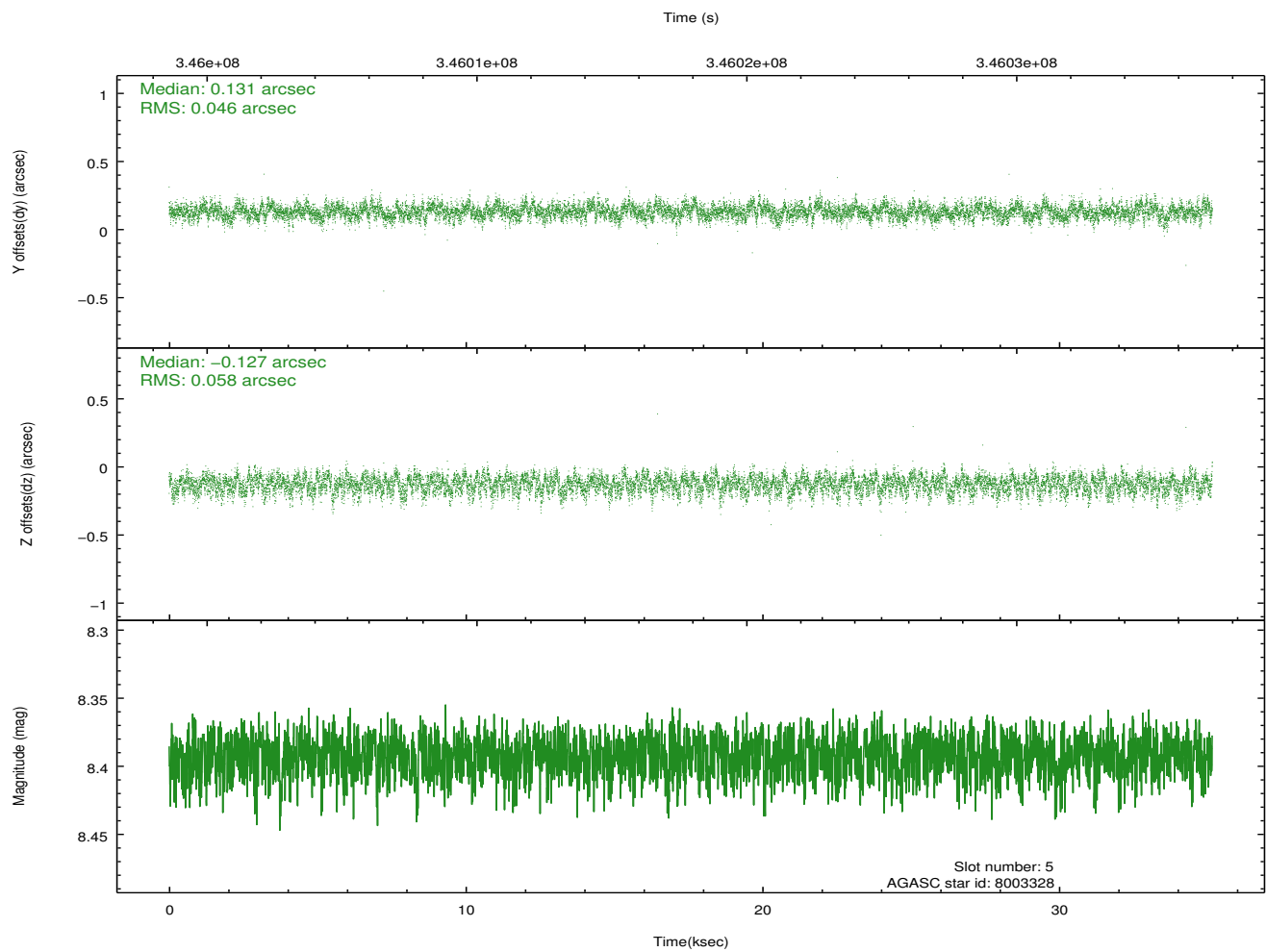
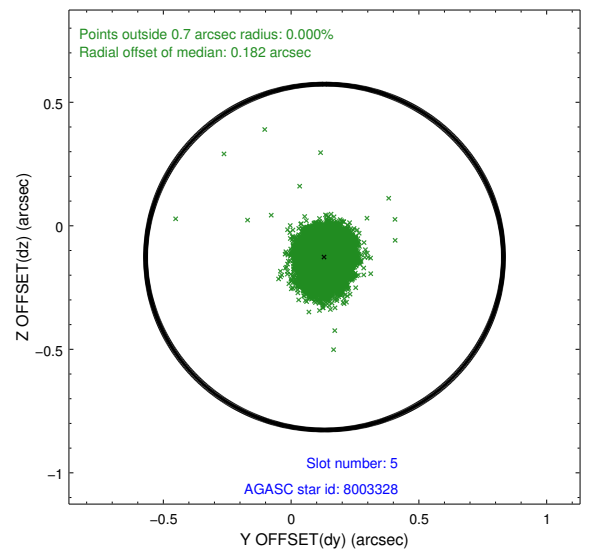
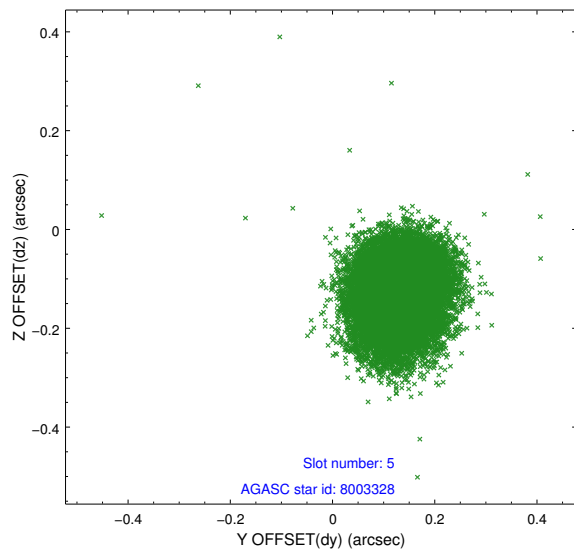
2.4.2 Slot 4



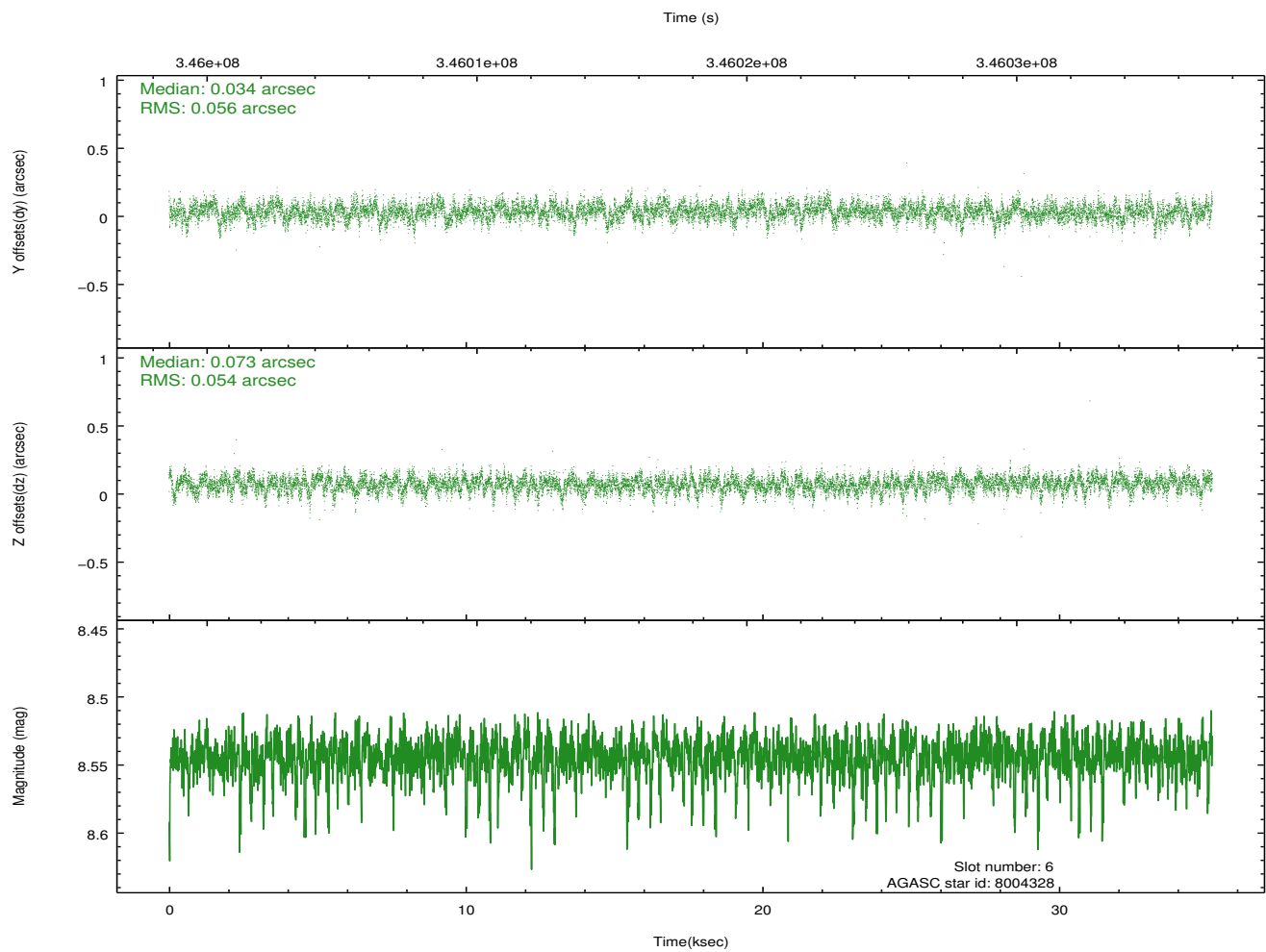
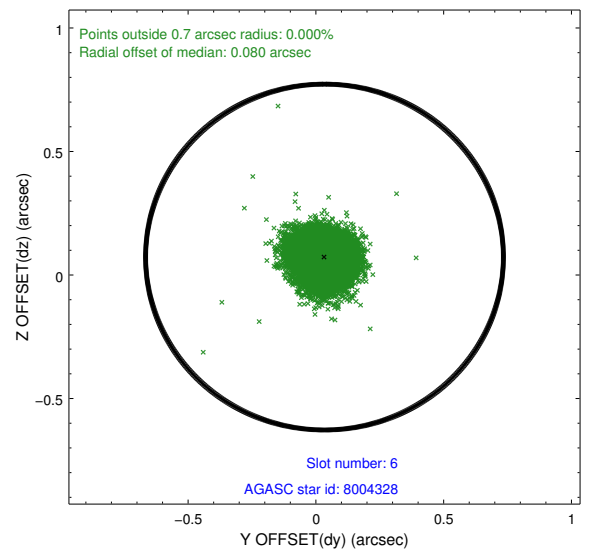
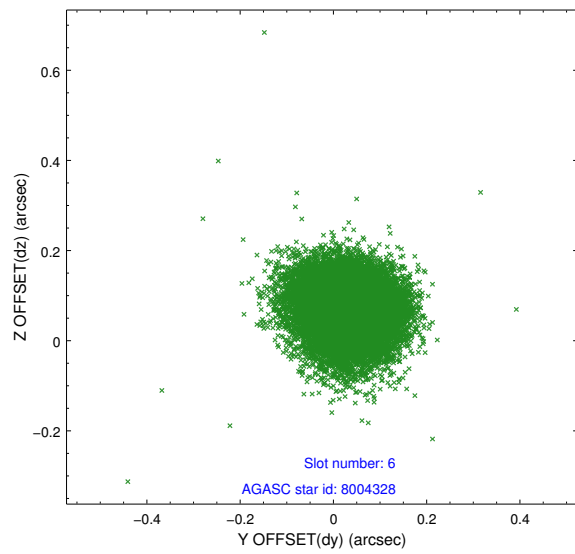
Time (s)



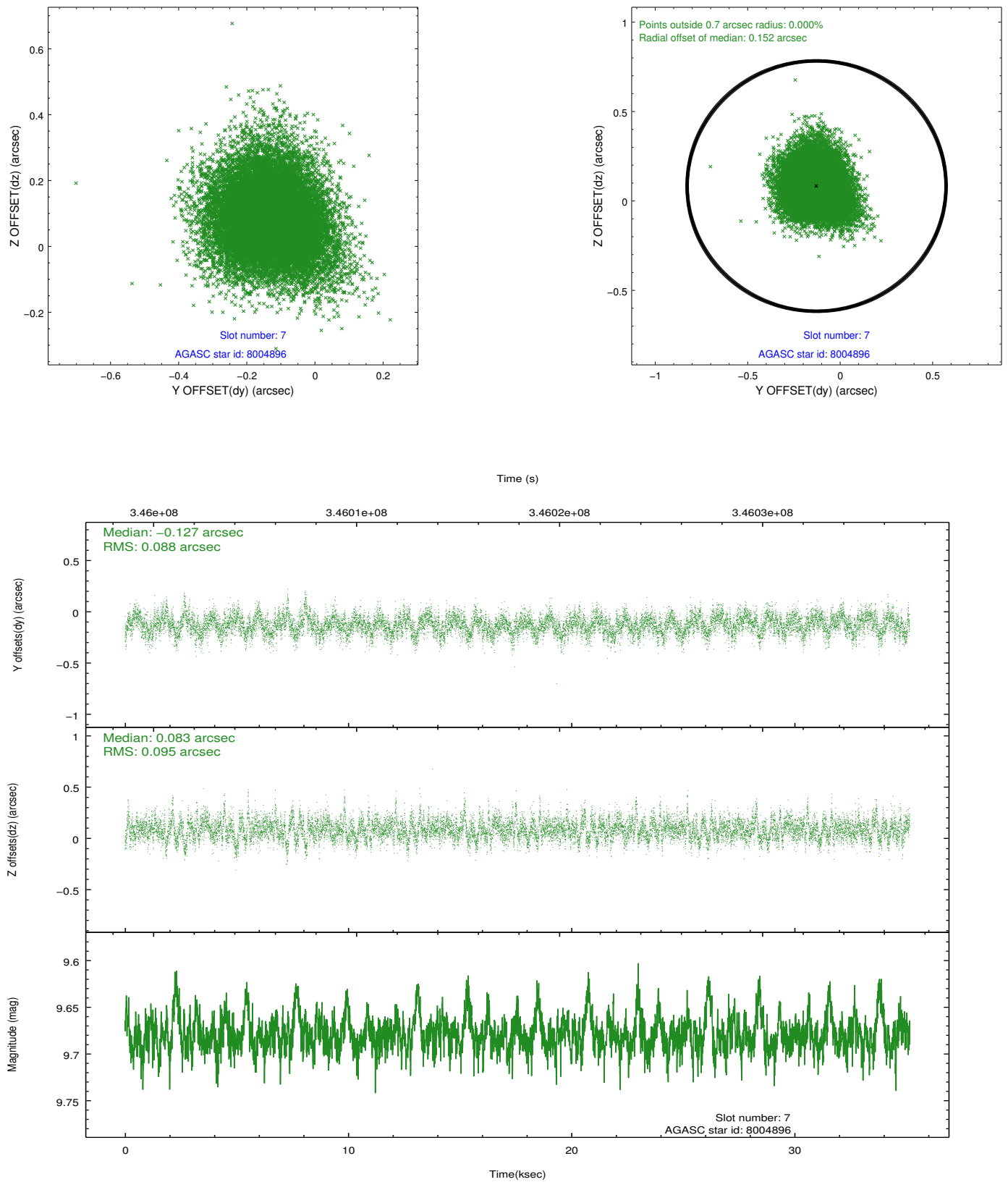
2.4.3 Slot 5



2.4.4 Slot 6

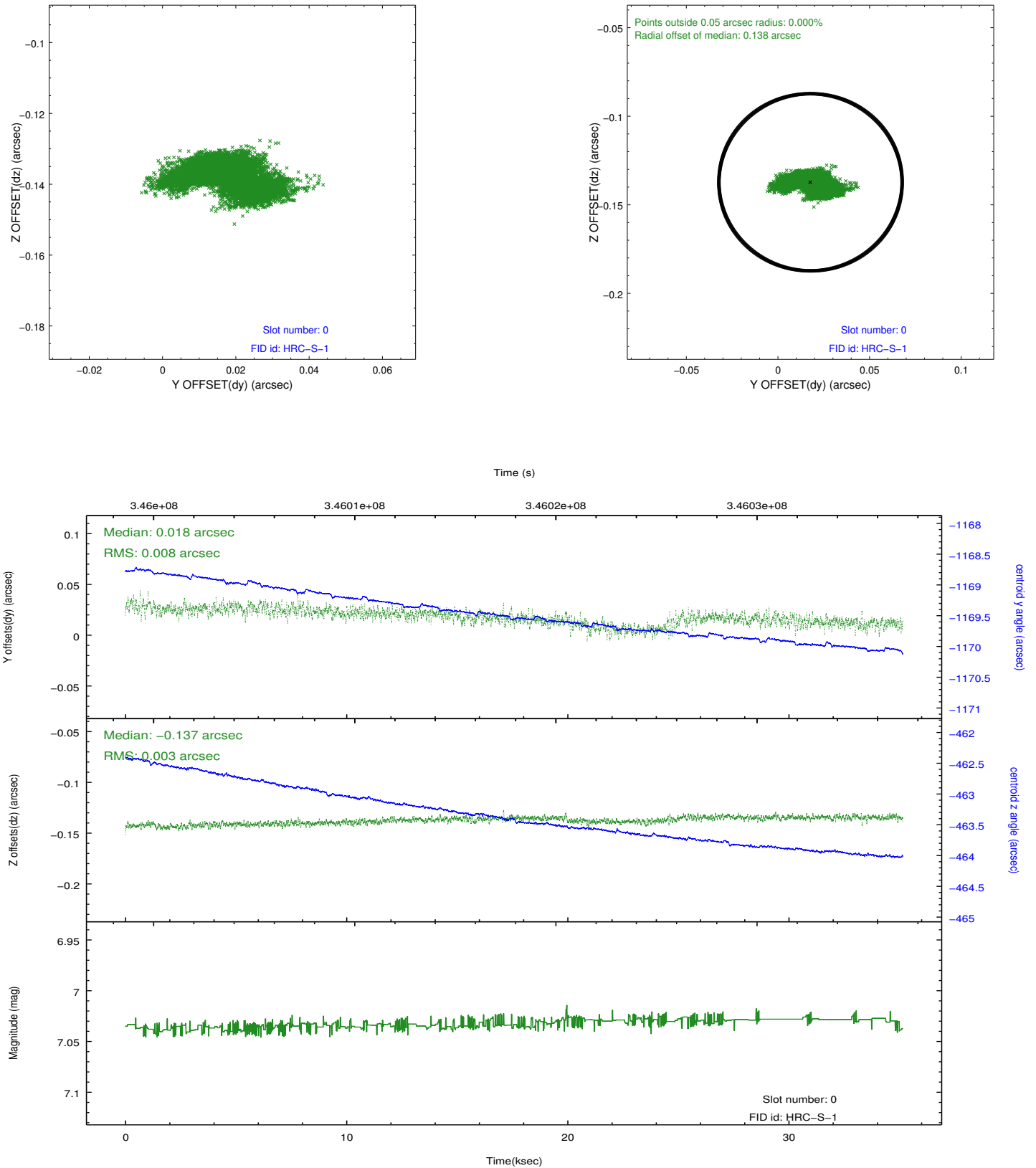


2.4.5 Slot 7

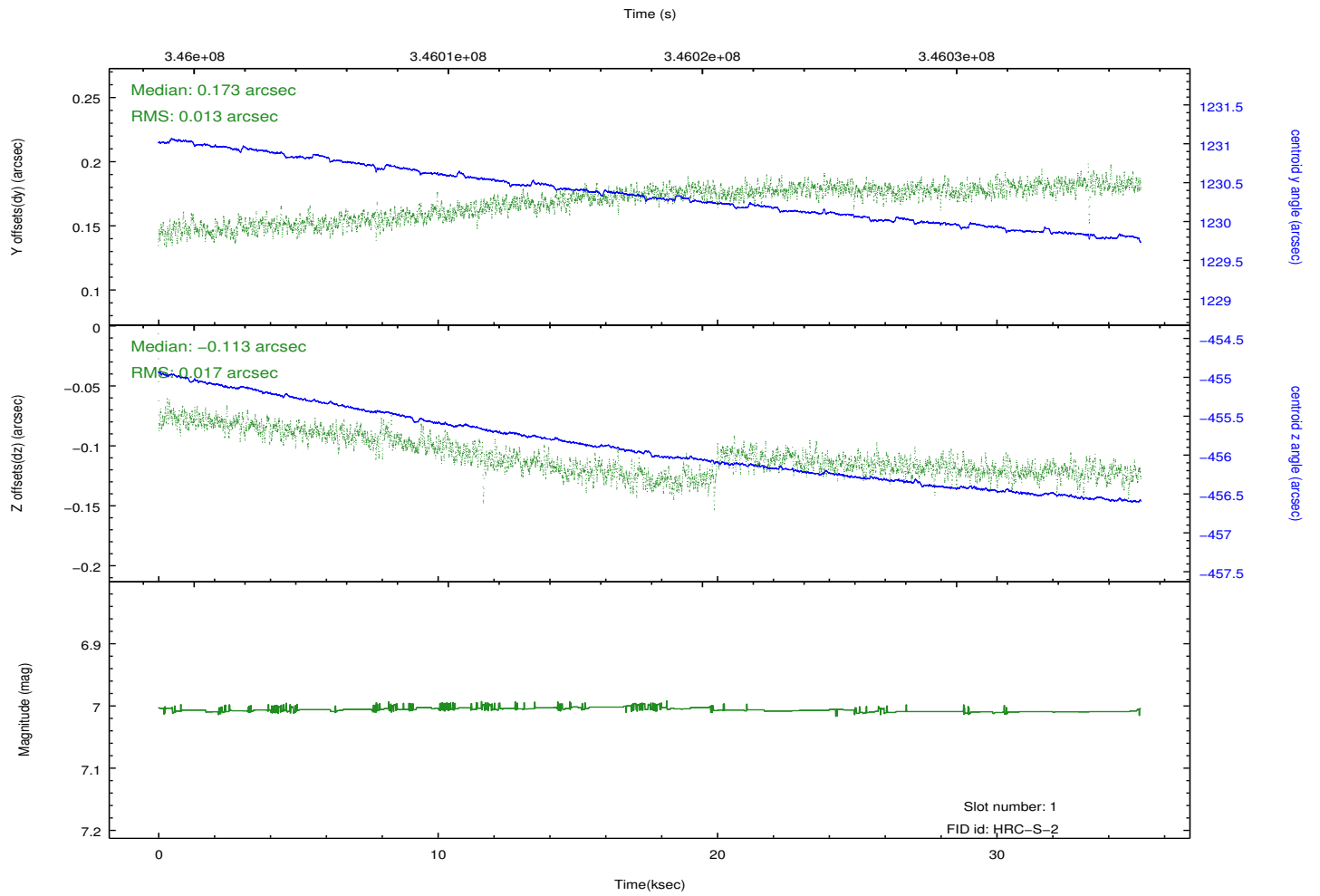
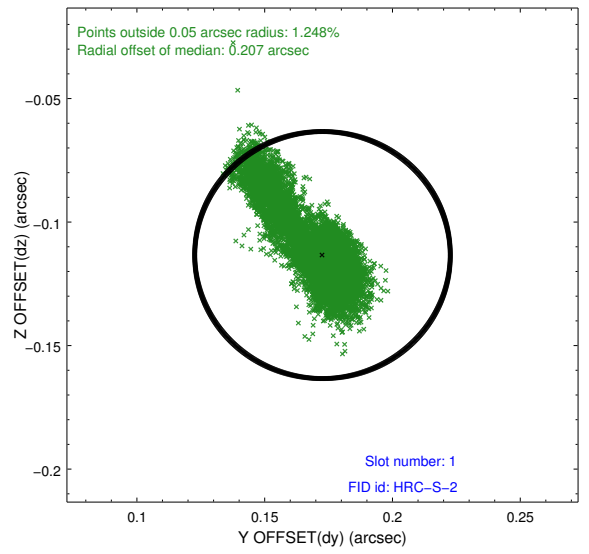
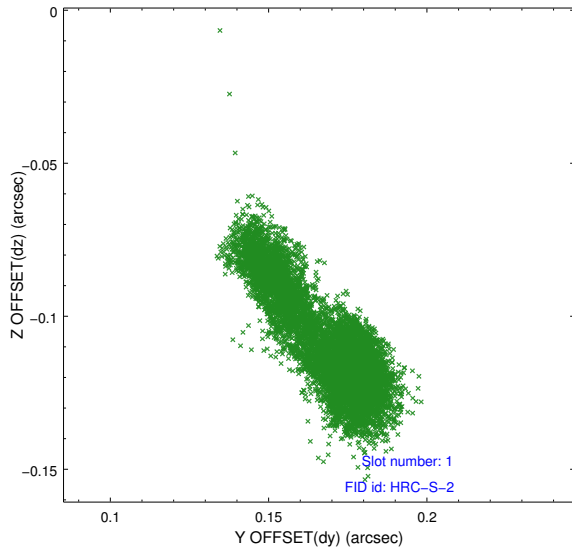


2.5 FID Slots

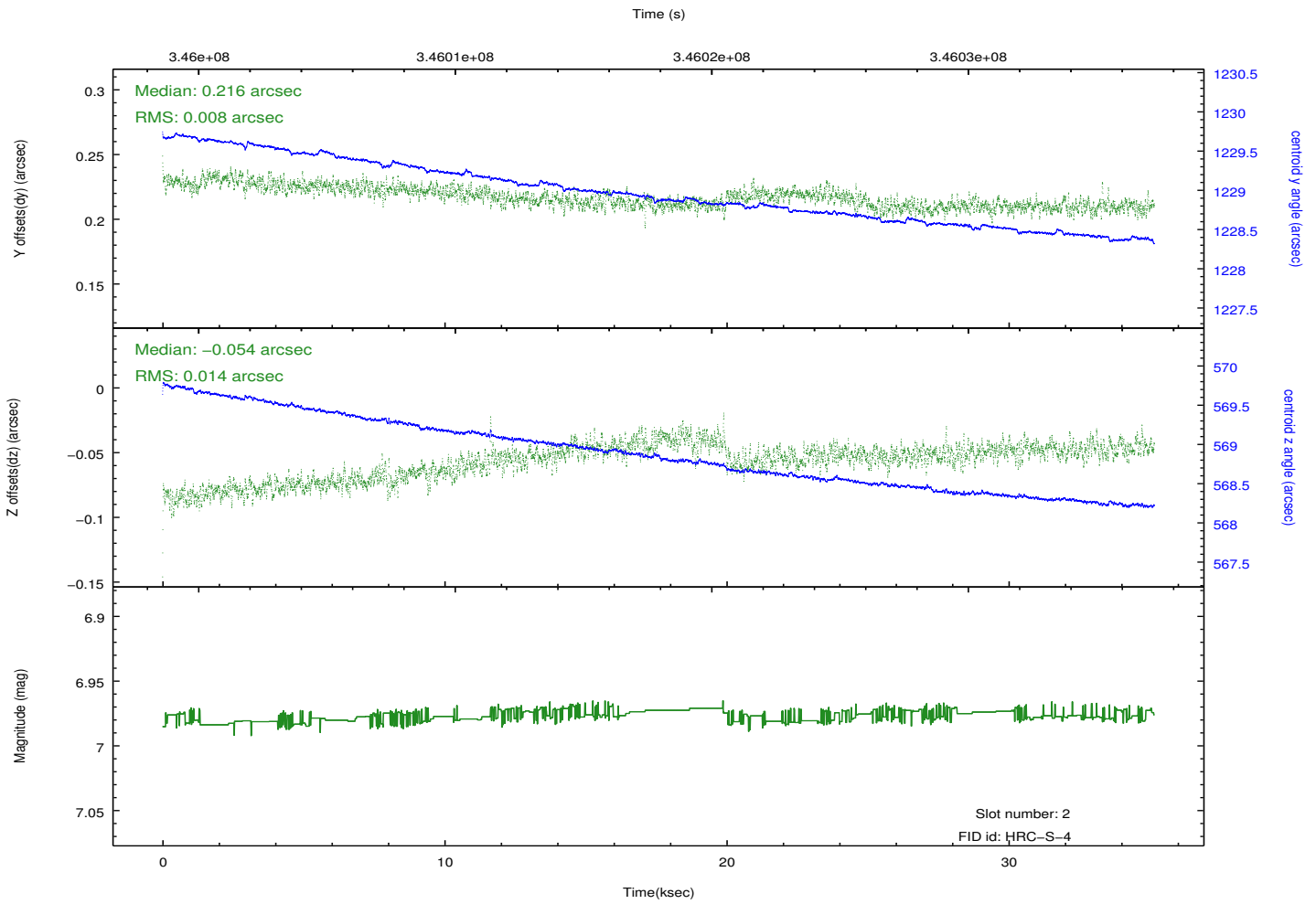
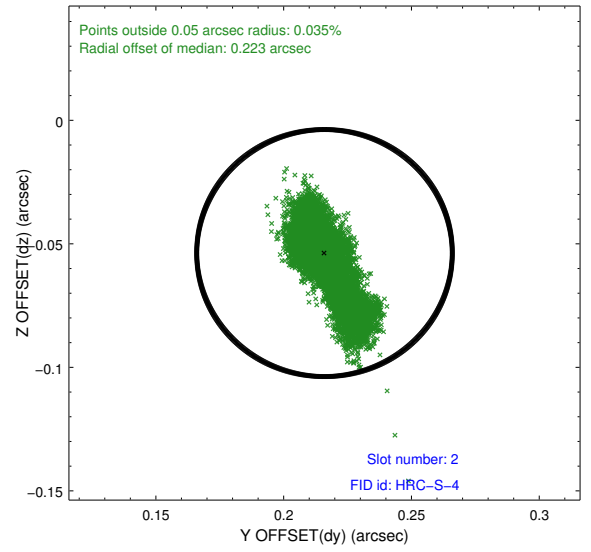
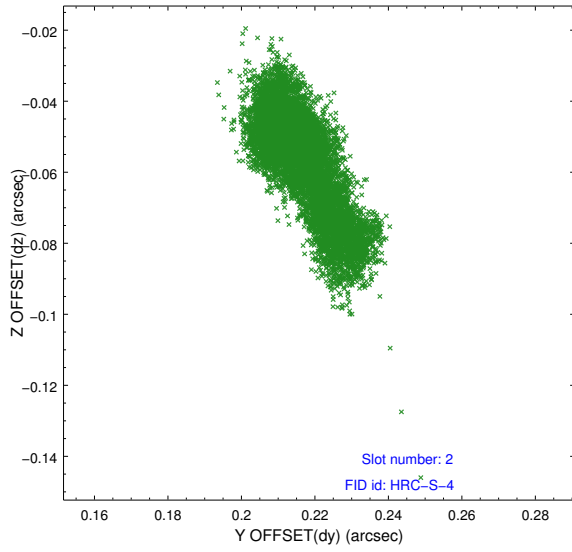
2.5.1 Slot 0



2.5.2 Slot 1

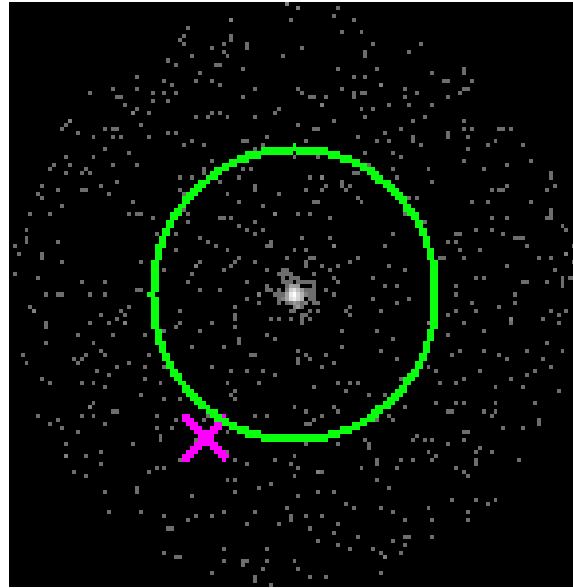


2.5.3 Slot 2

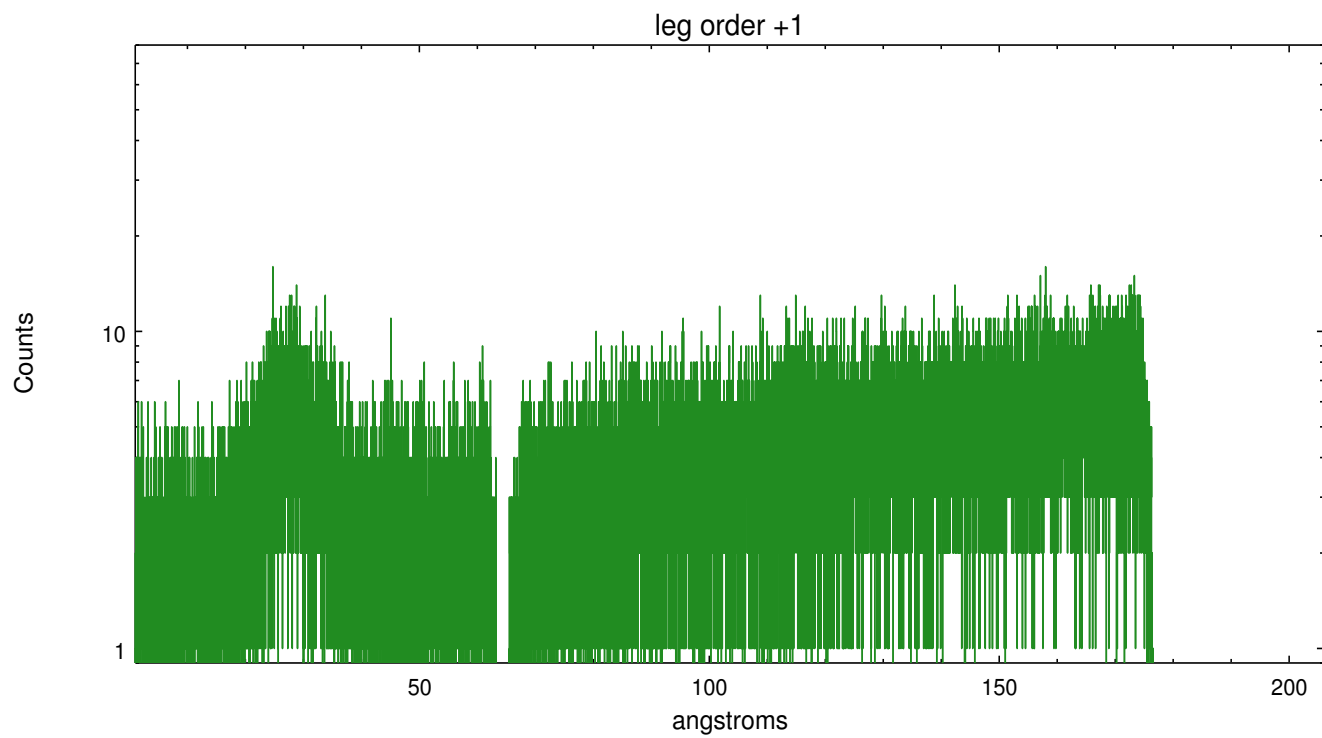
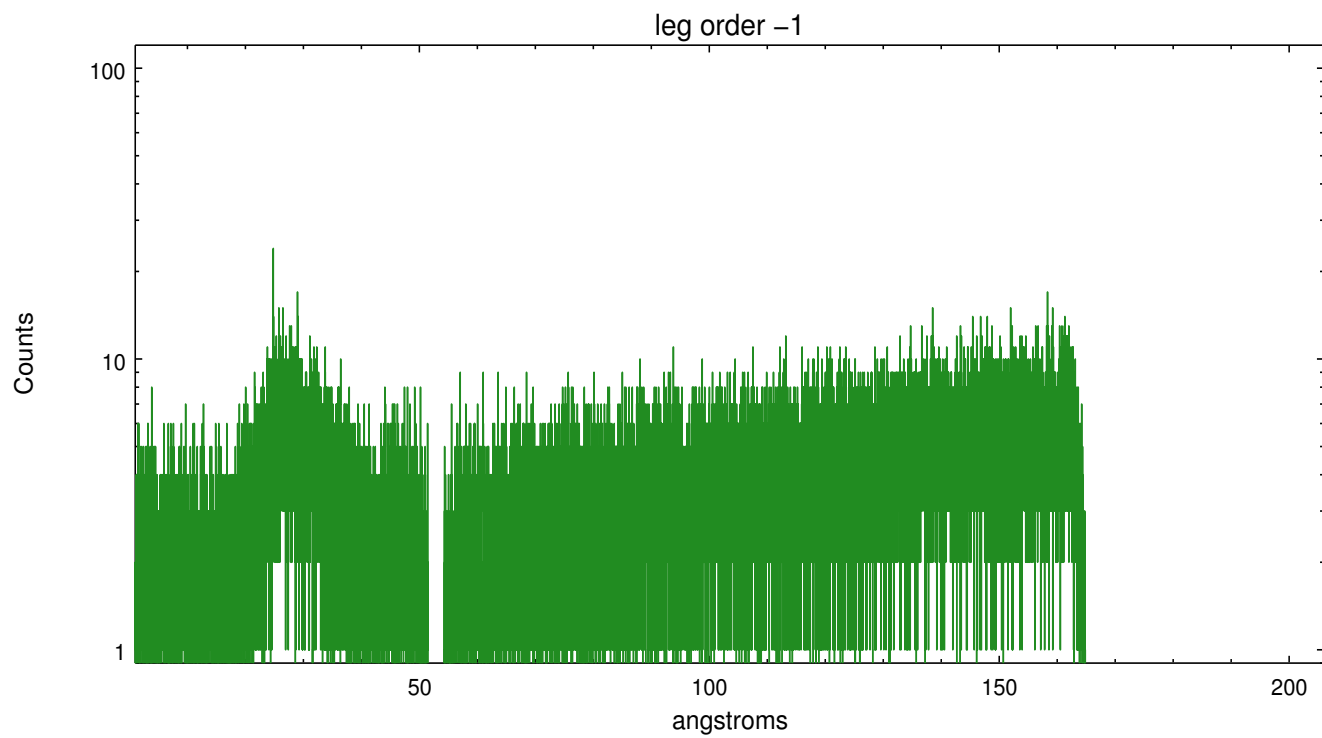


3 Gratings

3.1 LETG Arm



LETG Zero Order



A Summary

A.1 Status

V&V Scientist	Joy Nichols
V&V Date (YYYY-MM-DD)	2012.08.20
V&V Edition	1
V&V Disposition and Status	OK
V&V Charge Time	35.1628829

A.2 Comments