

V&V Reference Report

L2 ASCDS Version : 8.4.5

Observation 10091 - L2 Version 2
Chandra X-Ray Center

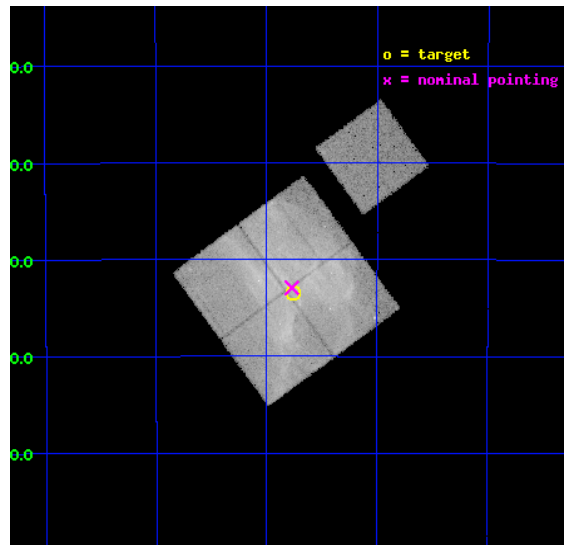
L2 Processing Date : Jun 7 2012

Contents

1	Front	2
2	OBI	3
2.1	OBI	3
2.1.1	Images	3
2.1.2	Bias	3
2.1.3	Parameters	4
2.1.4	Events	4
2.2	Compared Parameters	5
2.3	Aspect	6
2.4	Star Slots	9
2.4.1	Slot 3	9
2.4.2	Slot 4	10
2.4.3	Slot 5	11
2.4.4	Slot 6	12
2.4.5	Slot 7	13
2.5	FID Slots	14
2.5.1	Slot 0	14
2.5.2	Slot 1	15
2.5.3	Slot 2	16
A	Summary	17
A.1	Status	17
A.2	Comments	17

1 Front

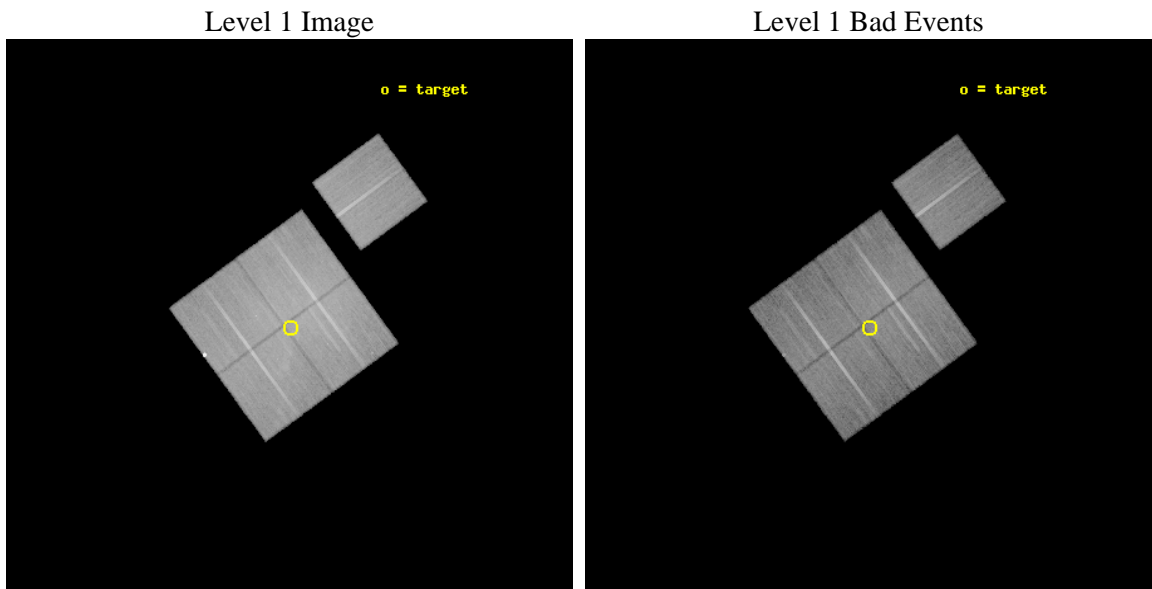
seq_num	501023	Sequence number
obs_id	10091	Observation id
title	Time Variability of Synchrotron X-ray Emission in SNR RX J1713.7-3946	Proposal title
observer	Dr Yasunobu Uchiyama	Principal investigator
object	RX J1713.7-3946 NW	Source name
dtycycle	0	
cycle	P	events from which exps? Prim/Second/Both
ra_targ	257.939583	Observer's specified target RA [deg]
dec_targ	-39.556444	Observer's specified target Dec [deg]
ra_nom	257.94297998249	Nominal RA [deg]
dec_nom	-39.548804099297	Nominal Dec [deg]
roll_nom	53.75306318445	Nominal Roll [deg]
revision	2	Processing version of data
ontime	30038.959210753	Sum of GTIs [s]
livetime	29646.478094305	Livetime [s]
ontime0	30035.818190455	Sum of GTIs [s]
ontime1	30029.536139846	Sum of GTIs [s]
ontime2	30042.100231051	Sum of GTIs [s]
ontime3	30038.959210753	Sum of GTIs [s]
ontime6	30035.818190455	Sum of GTIs [s]
l2events	287603	Number of level 2 events



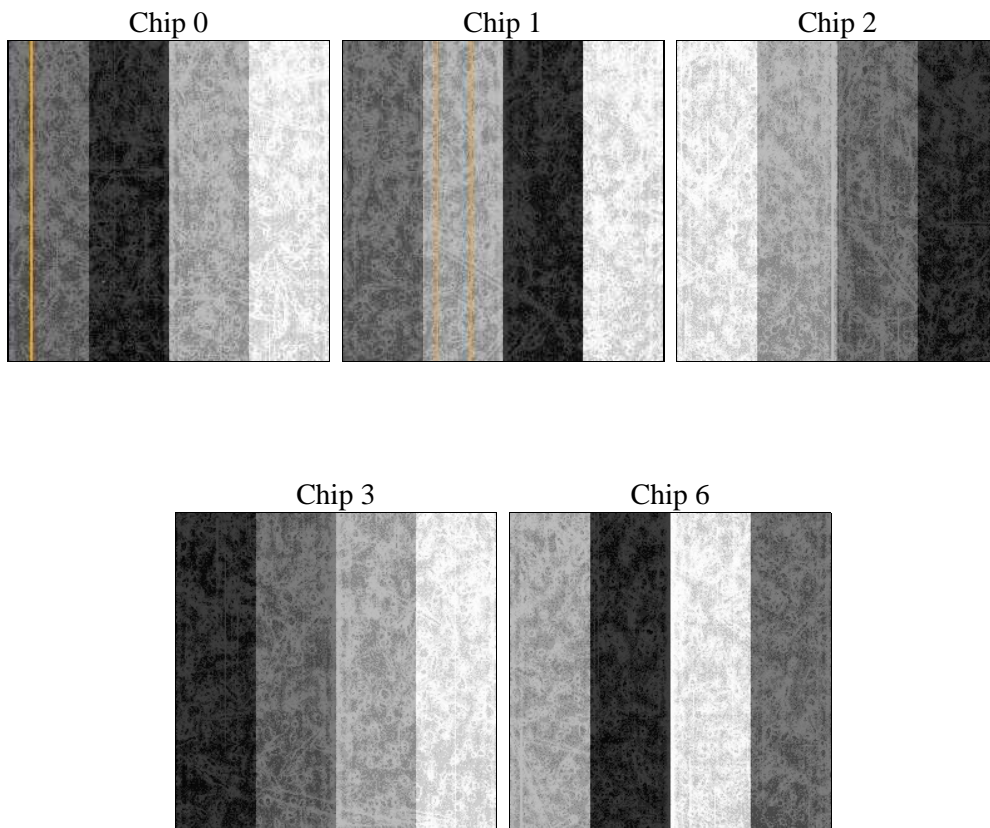
2 OBI

2.1 OBI

2.1.1 Images



2.1.2 Bias



2.1.3 Parameters

obi_num	0	Obi number	sched_exp_time	30000.000000	[s] Scheduled observation exposure time
ascdsver	8.4.5	Processing system revision	ontime	30038.959210753	Sum of GTIs [s]
caldbver	4.4.10	 	ontime0	30035.818190455	Sum of GTIs [s]
date	2012-06-07T04:05:07	Date and time of file creation	ontime1	30029.536139846	Sum of GTIs [s]
revision	2	Processing version of data	ontime2	30042.100231051	Sum of GTIs [s]
			ontime3	30038.959210753	Sum of GTIs [s]
			ontime6	30035.818190455	Sum of GTIs [s]
			l1events	1419027	Number of level 1 events

2.1.4 Events

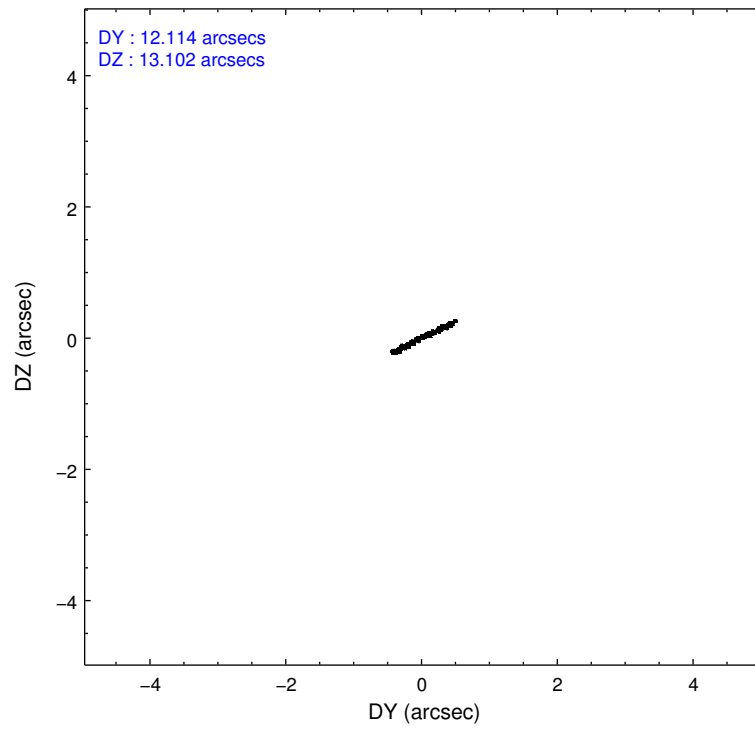
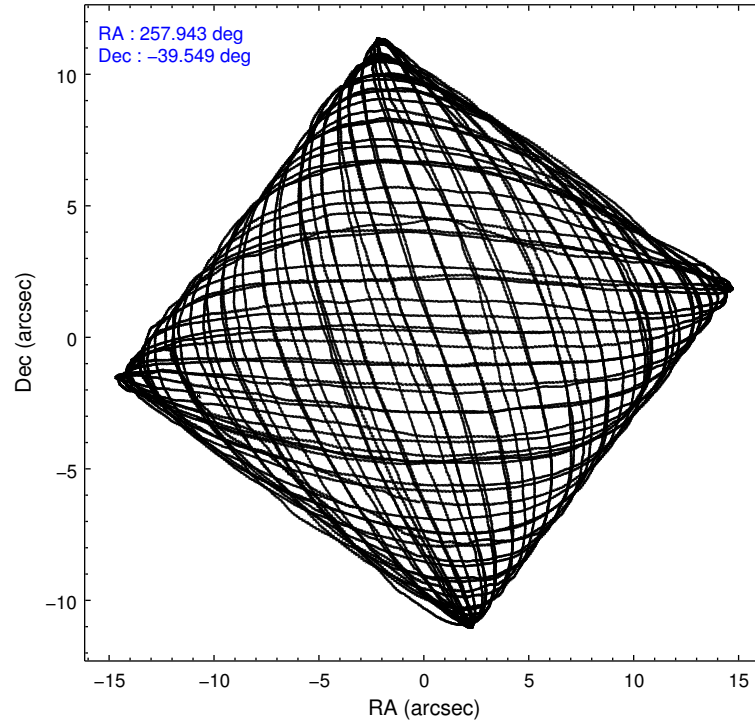
	ccd 0	ccd 1	ccd 2	ccd 3	ccd 6
level 1 events	284932	272086	315189	300583	246237
rejected events	204202	199615	236162	230021	219136
rejected %	71%	73%	74%	76%	88%

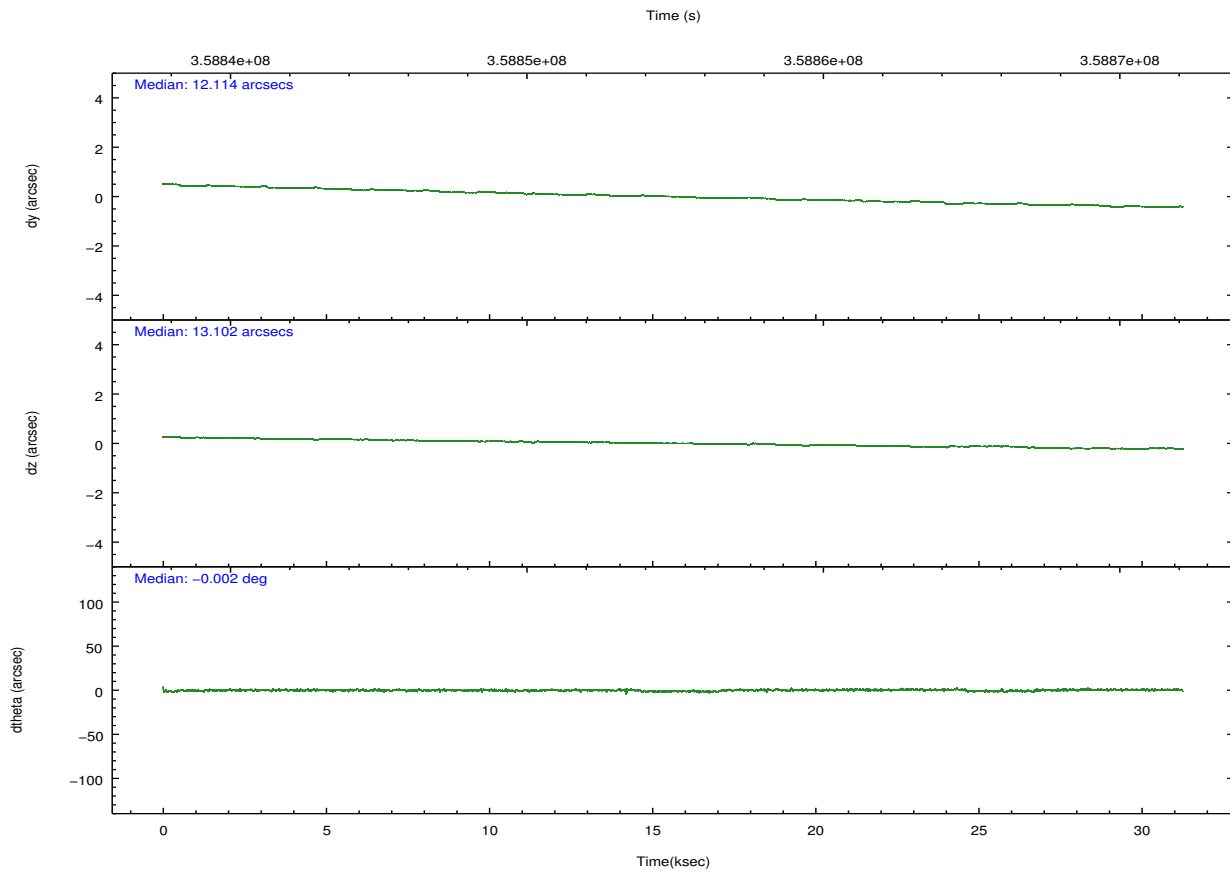
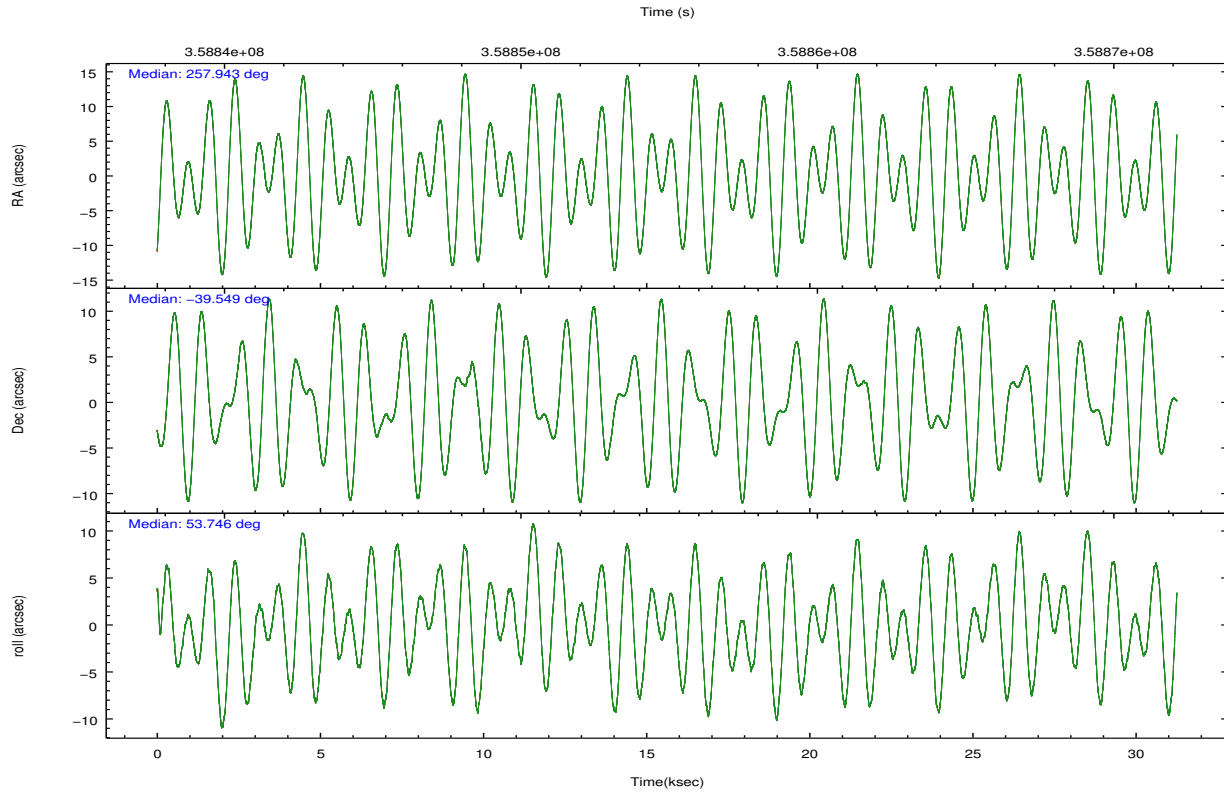
	ccd 0	ccd 1	ccd 2	ccd 3	ccd 6
grade 0 events	46275	46039	52463	46159	10600
	16%	16%	16%	15%	4%
grade 1 events	361	285	452	449	115
	0%	0%	0%	0%	0%
grade 2 events	19939	11047	11685	10237	5772
	6%	4%	3%	3%	2%
grade 3 events	4264	4447	4426	4144	2738
	1%	1%	1%	1%	1%
grade 4 events	4197	4447	4489	4126	2710
	1%	1%	1%	1%	1%
grade 5 events	7842	8568	7357	9019	8345
	2%	3%	2%	3%	3%
grade 6 events	6060	6495	5972	5901	5286
	2%	2%	1%	1%	2%
grade 7 events	195994	190758	228345	220548	210671
	68%	70%	72%	73%	85%

2.2 Compared Parameters

Parameter	Planned	Actual	Parameter	Planned	Actual
Instrument	ACIS	ACIS	Obspar format version number	7	7
Detector	ACIS-01236	ACIS-01236	Obspar file type	PREDICTED	ACTUAL
Grating	NONE	NONE	Obspar update status	NONE	UPDATED
Data mode	VFAINT	VFAINT	Number of optional ACIS chips dropped	0	0
Observation mode	POINTING	POINTING	On-chip summing requested	N	N
[deg] Pointing RA	257.939249	257.9429799824902	Subarray requested	NONE	NONE
[deg] Pointing Dec	-39.576134	-39.54880409929718	Alternating exposures requested	N	N
[deg] Pointing Roll	53.542002	53.75306318444968	[s] Primary exposure time	0.000000	3.1
[mm] SIM focus pos	-0.782348	-0.7809083437167272			
[mm] SIM defocus	0	0.001439871863259334			
[mm] SIM translation stage pos	-233.592463	-233.5874344608287			
[mm] SIM translation stage offset	0	-0.005018542100998502			
[s] Observation start time (MET)	358840547.184000	358839084.81543			
Observation start date	2009-05-16T05:54:41	2009-05-16T05:31:24			
[s] Observation end time (MET)	358870547.184000	358871025.86702			
Observation end date	2009-05-16T14:14:41	2009-05-16T14:23:45			
Read mode	TIMED	TIMED			

2.3 Aspect



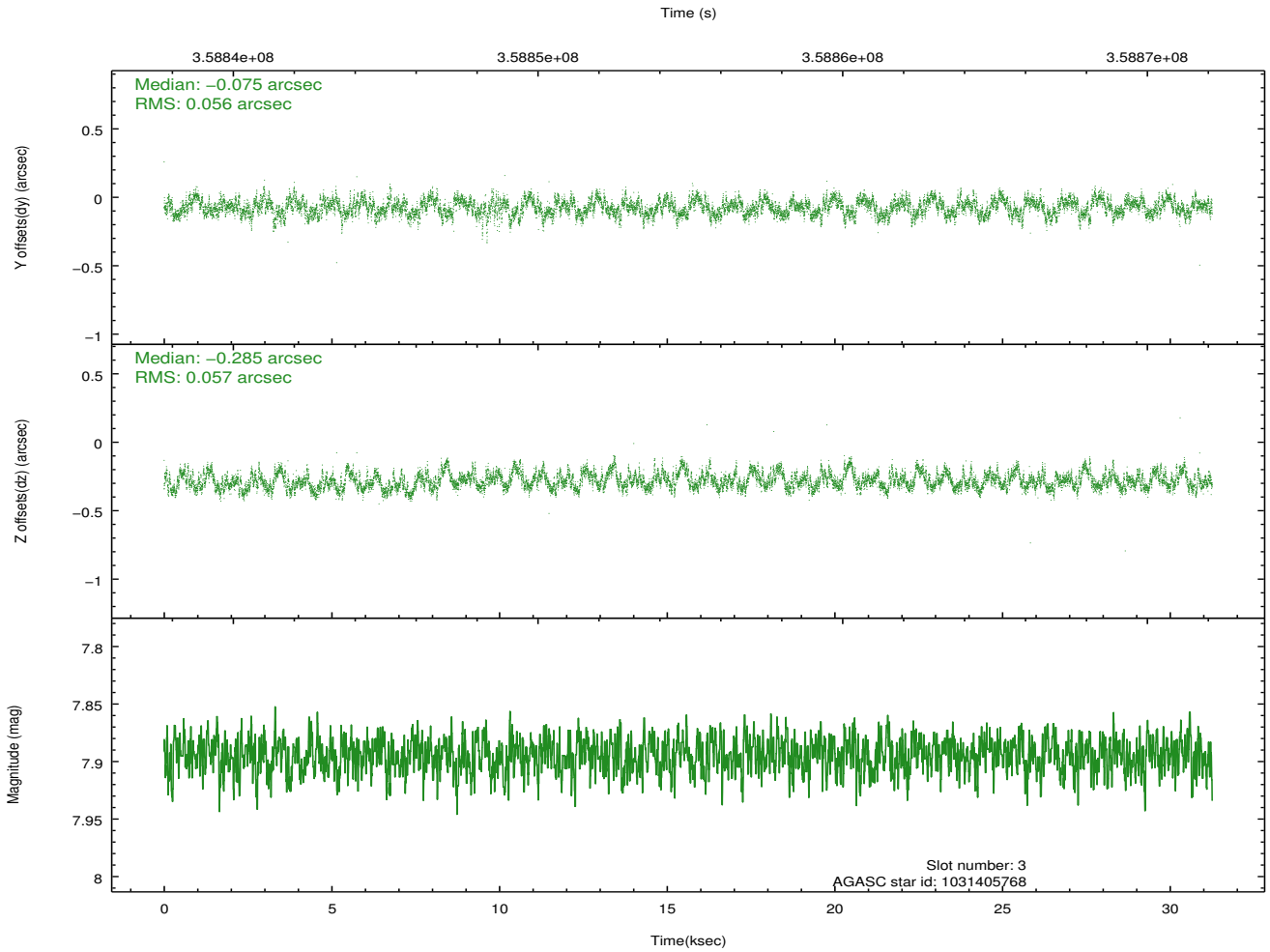
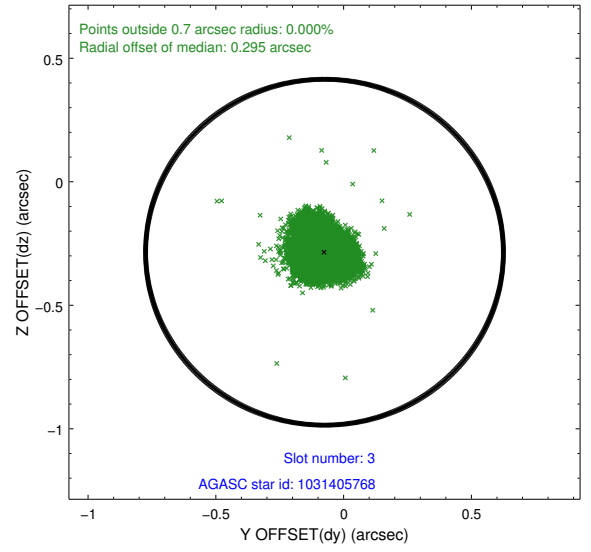
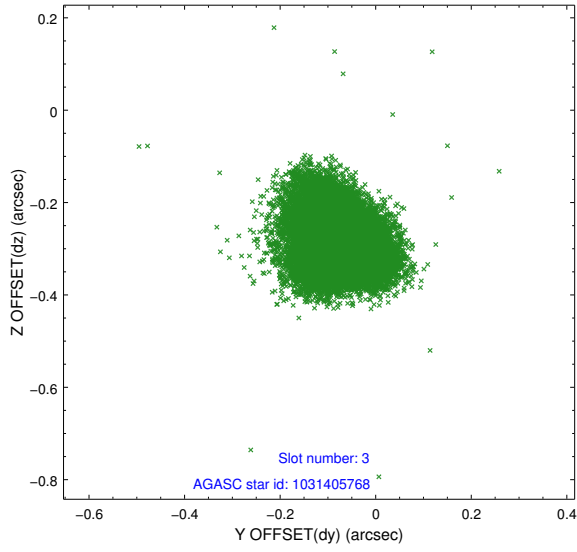


Slot Statistics

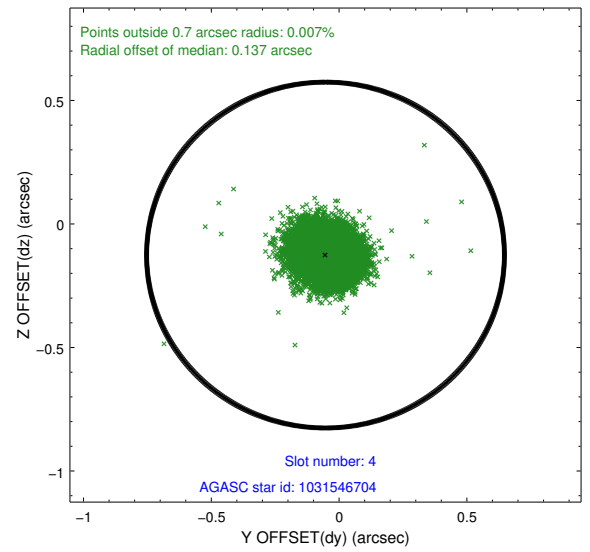
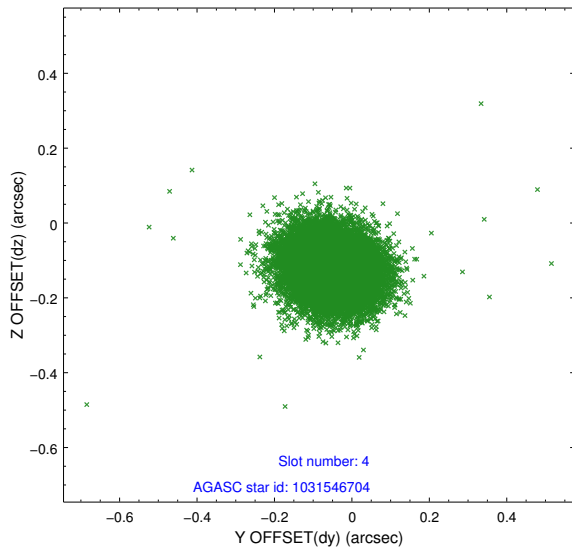
slot	status	id	mag	n_pts	med_dy	med_dz	dr1	dr2	ra	dec	mean_y	mean_z
0	FID	ACIS-I-1	7.11	7623	0.014	0.049	0.011	0.018	0.000000	0.000000	927.44	-836.60
1	FID	ACIS-I-2	7.03	7619	-0.116	-0.053	0.013	0.023	0.000000	0.000000	-766.74	-843.18
2	FID	ACIS-I-6	7.11	7623	0.009	0.073	0.014	0.026	0.000000	0.000000	393.05	1705.20
3	GUIDE	1031405768	7.89	15243	-0.075	-0.285	0.086	0.134	257.178877	-39.338023	-575.97	2206.64
4	GUIDE	1031546704	9.15	15233	-0.053	-0.126	0.087	0.144	258.328569	-39.071177	2106.82	204.03
5	GUIDE	1031931920	9.34	15195	0.139	-0.205	0.118	0.184	257.217218	-39.776204	-1772.35	1173.74
6	GUIDE	1032064704	8.56	15241	-0.068	0.229	0.092	0.143	258.960381	-39.623855	1531.99	-2388.33
7	GUIDE	1032068792	8.56	15241	0.049	0.388	0.073	0.117	258.324911	-40.288108	-1433.21	-2376.08

2.4 Star Slots

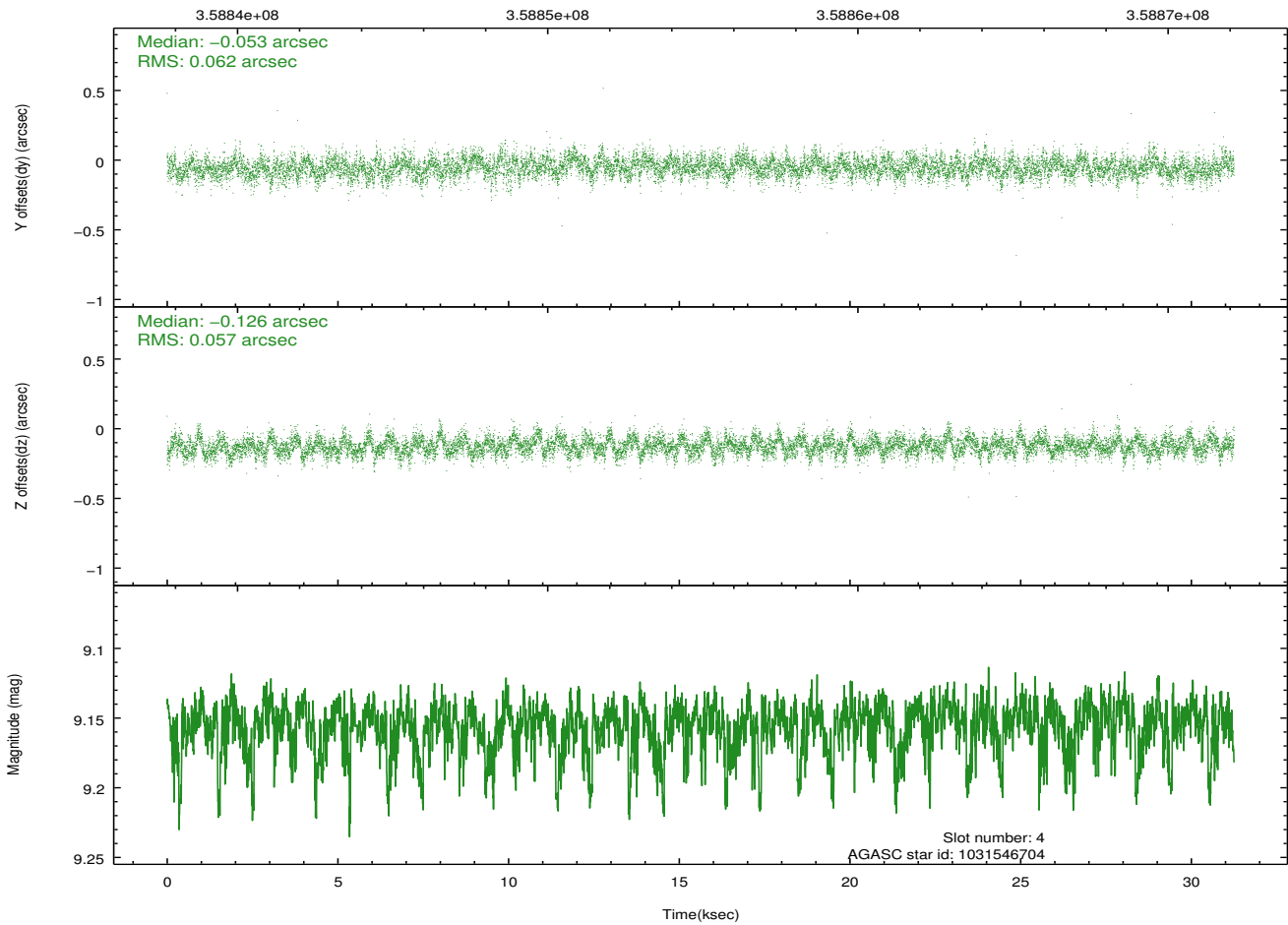
2.4.1 Slot 3



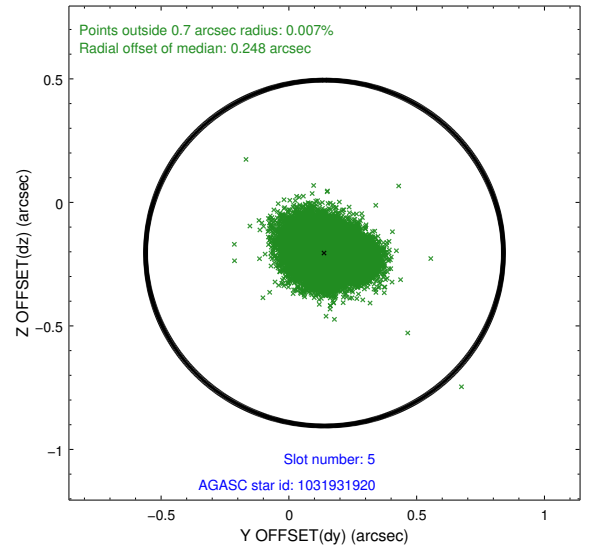
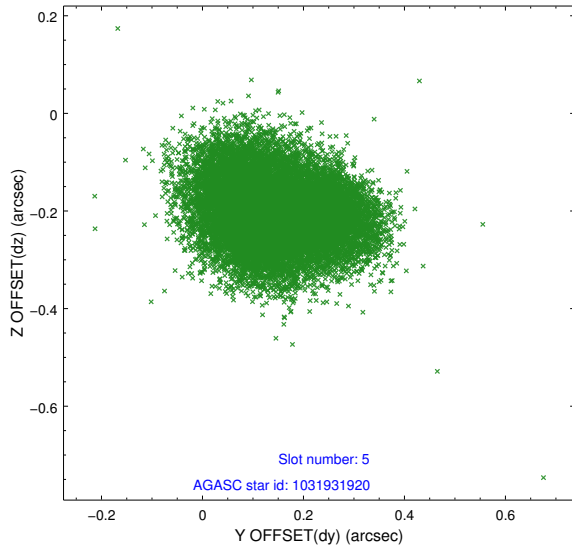
2.4.2 Slot 4



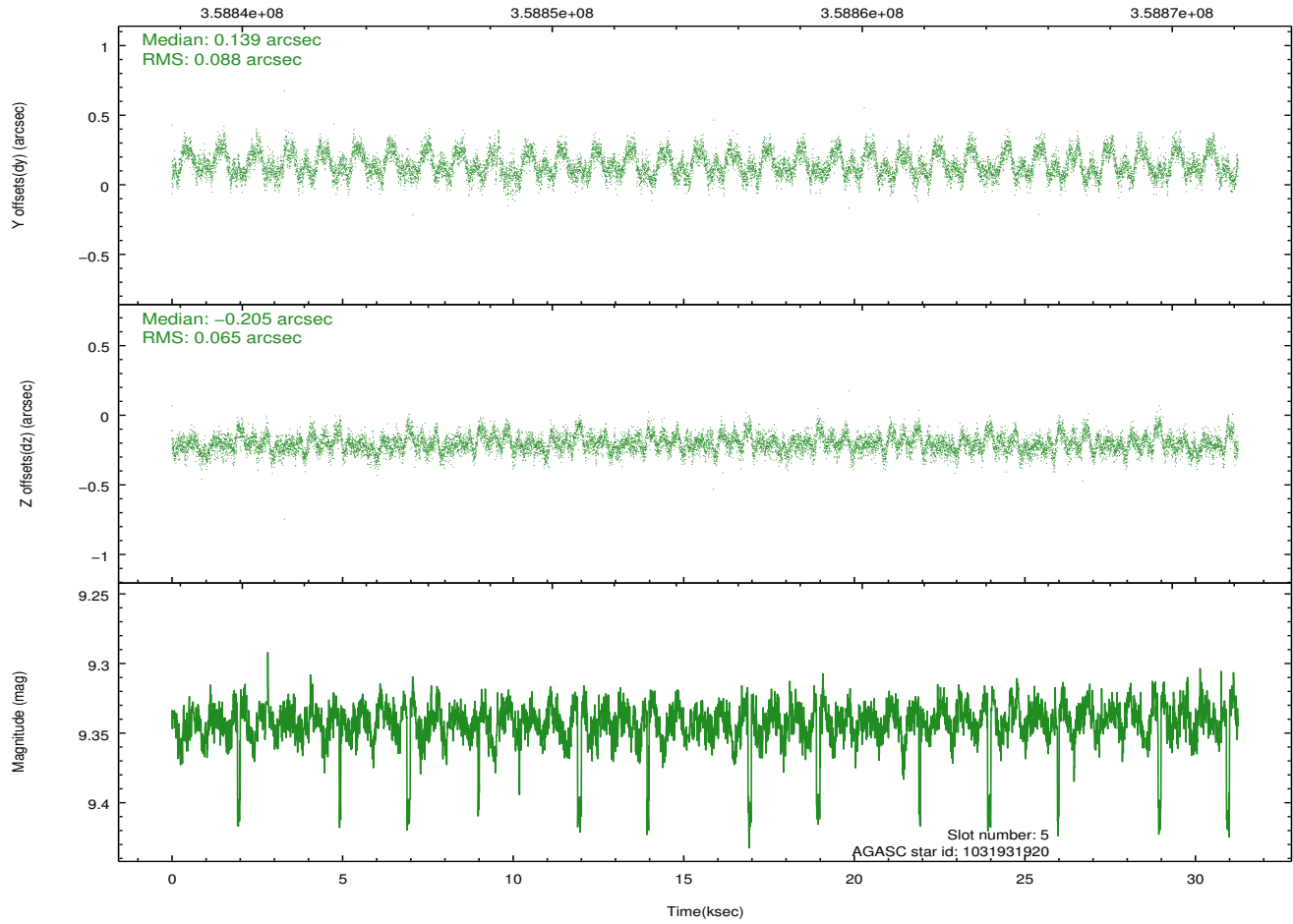
Time (s)



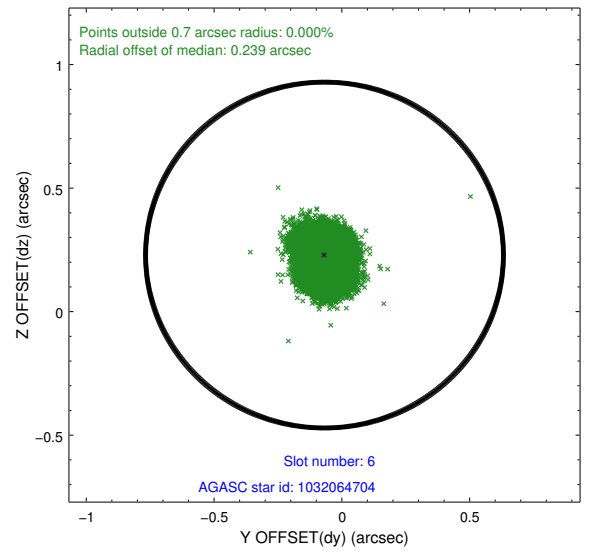
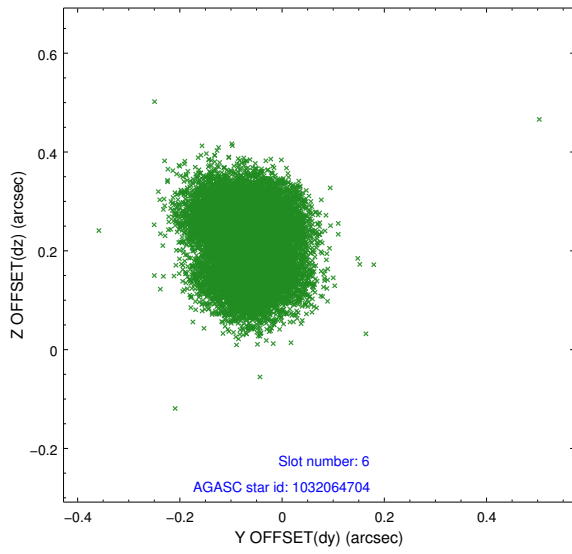
2.4.3 Slot 5



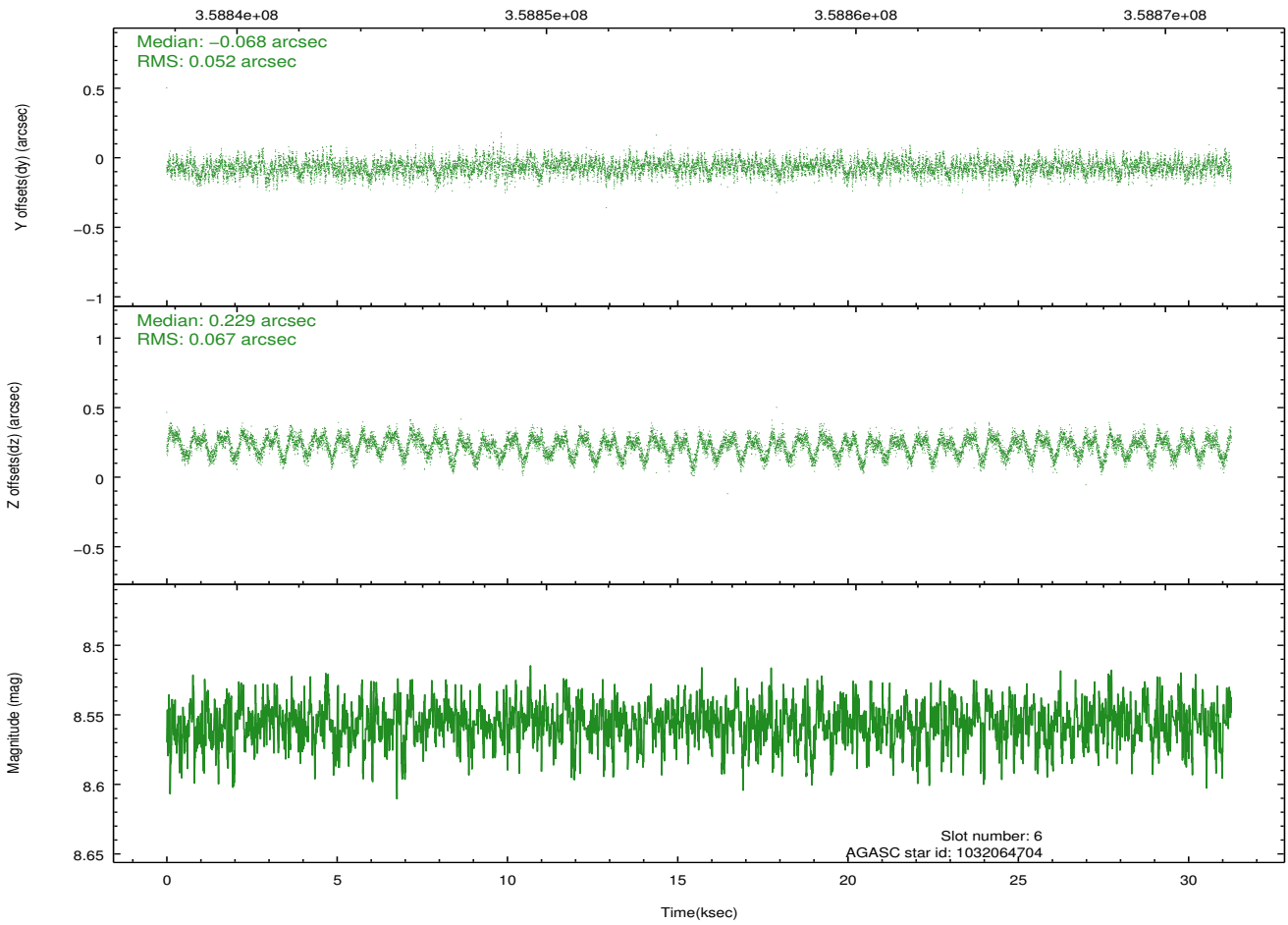
Time (s)



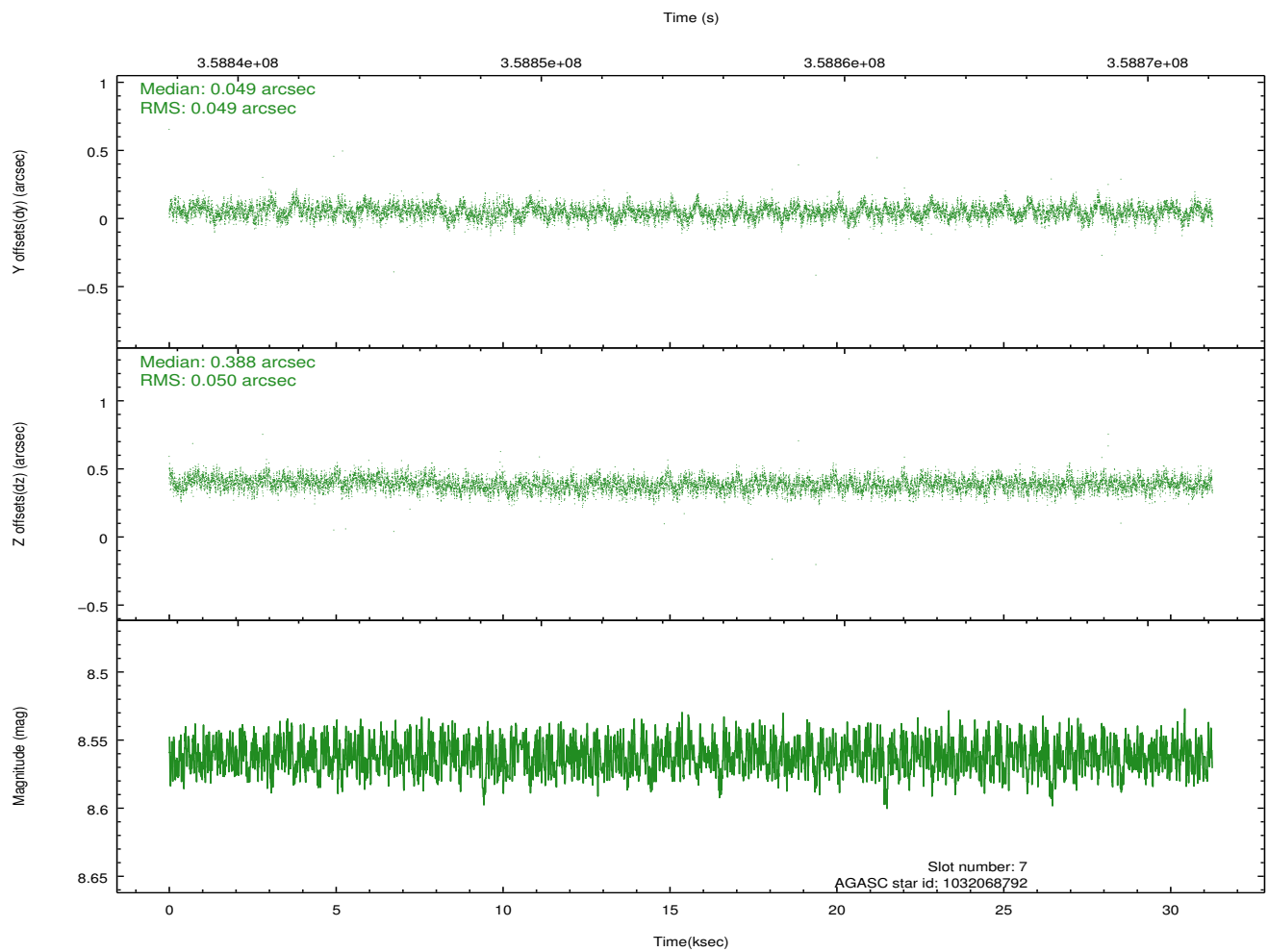
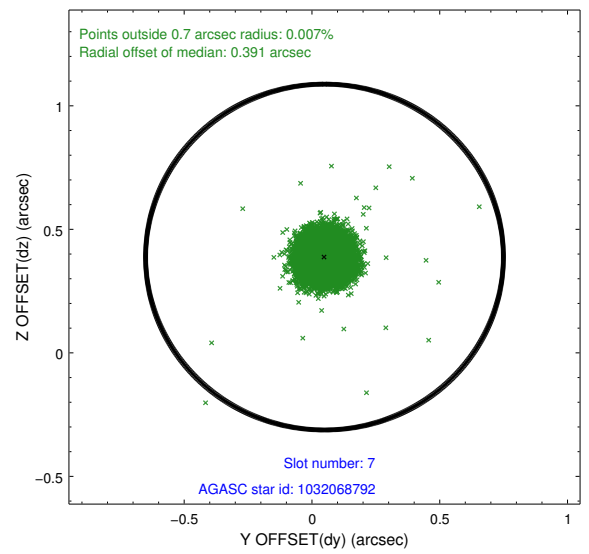
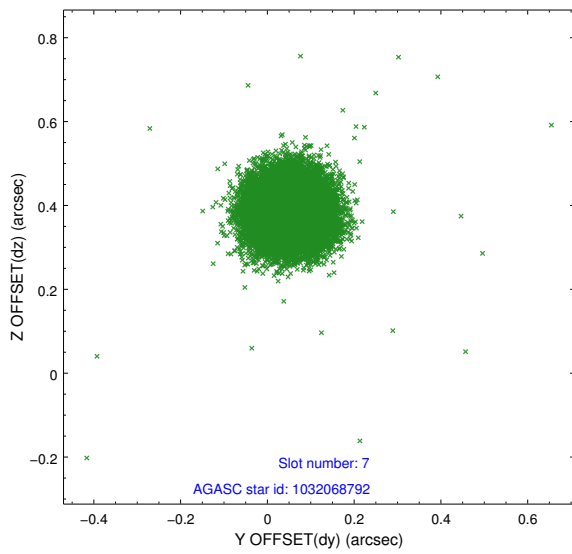
2.4.4 Slot 6



Time (s)

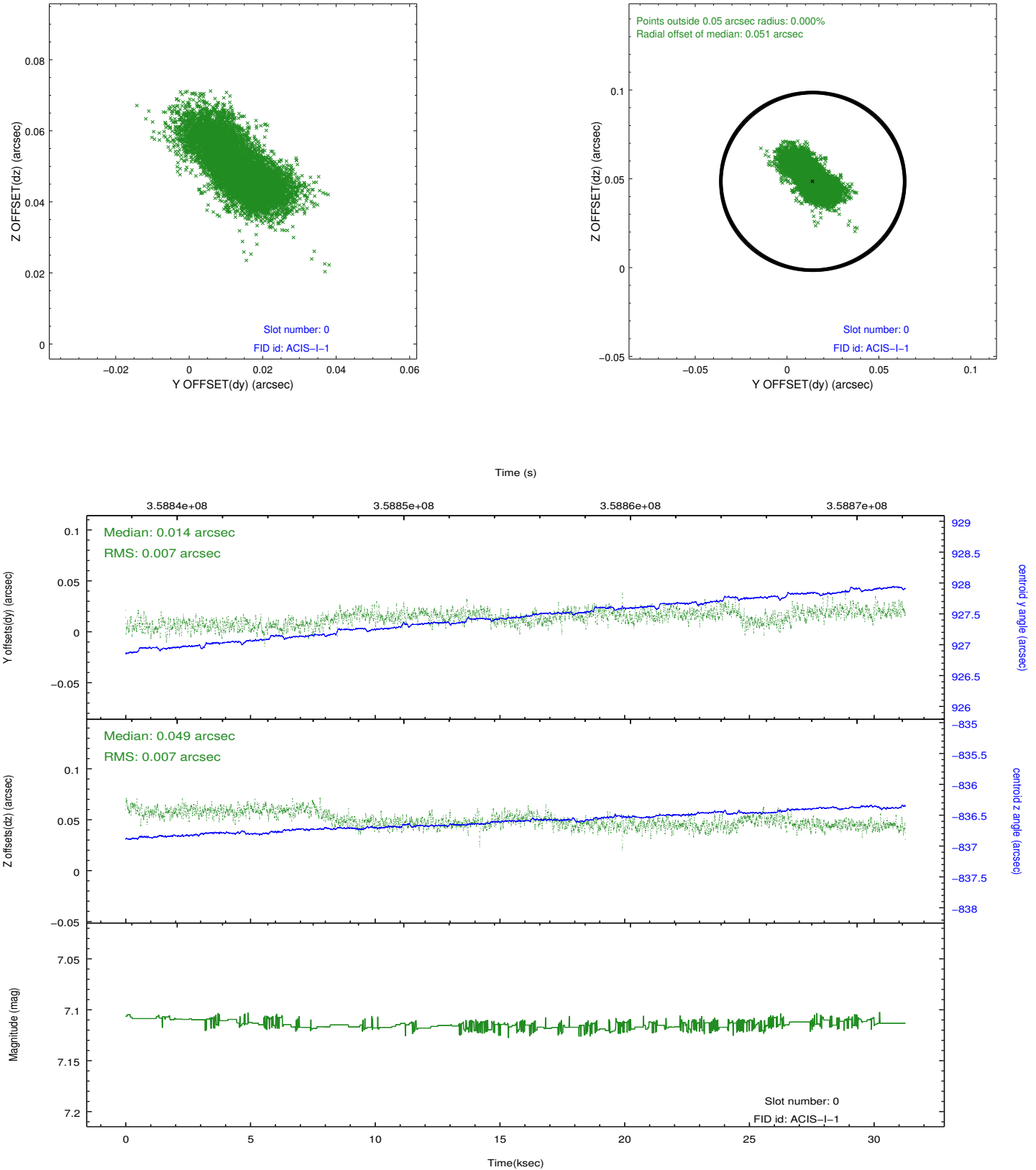


2.4.5 Slot 7

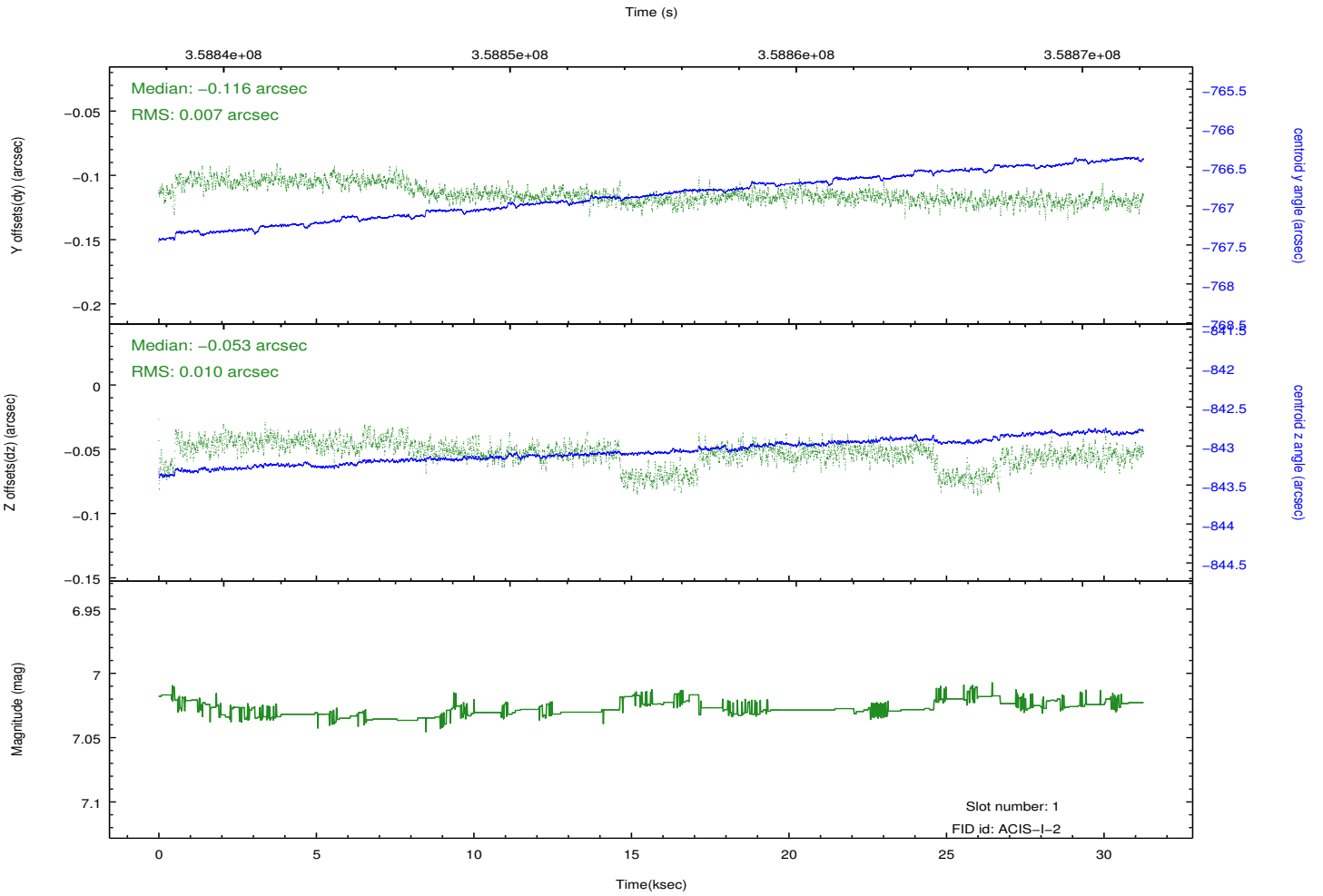
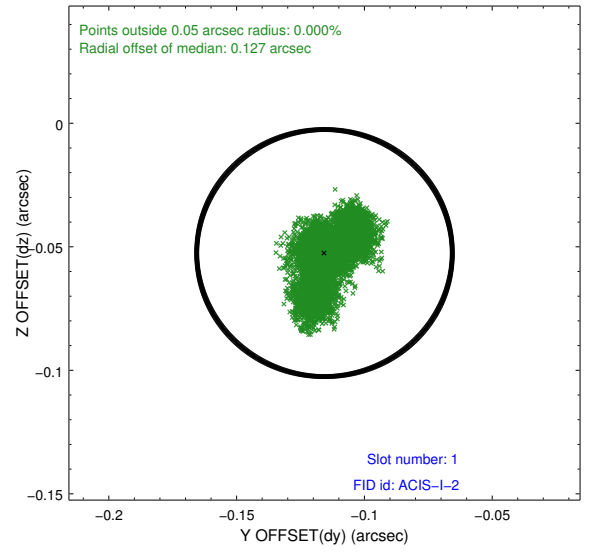
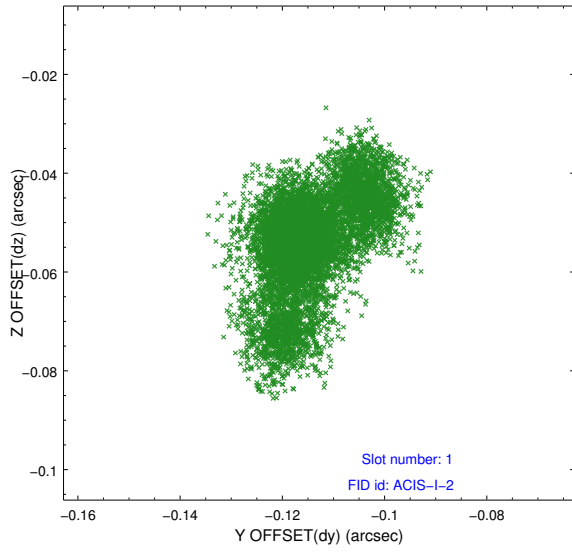


2.5 FID Slots

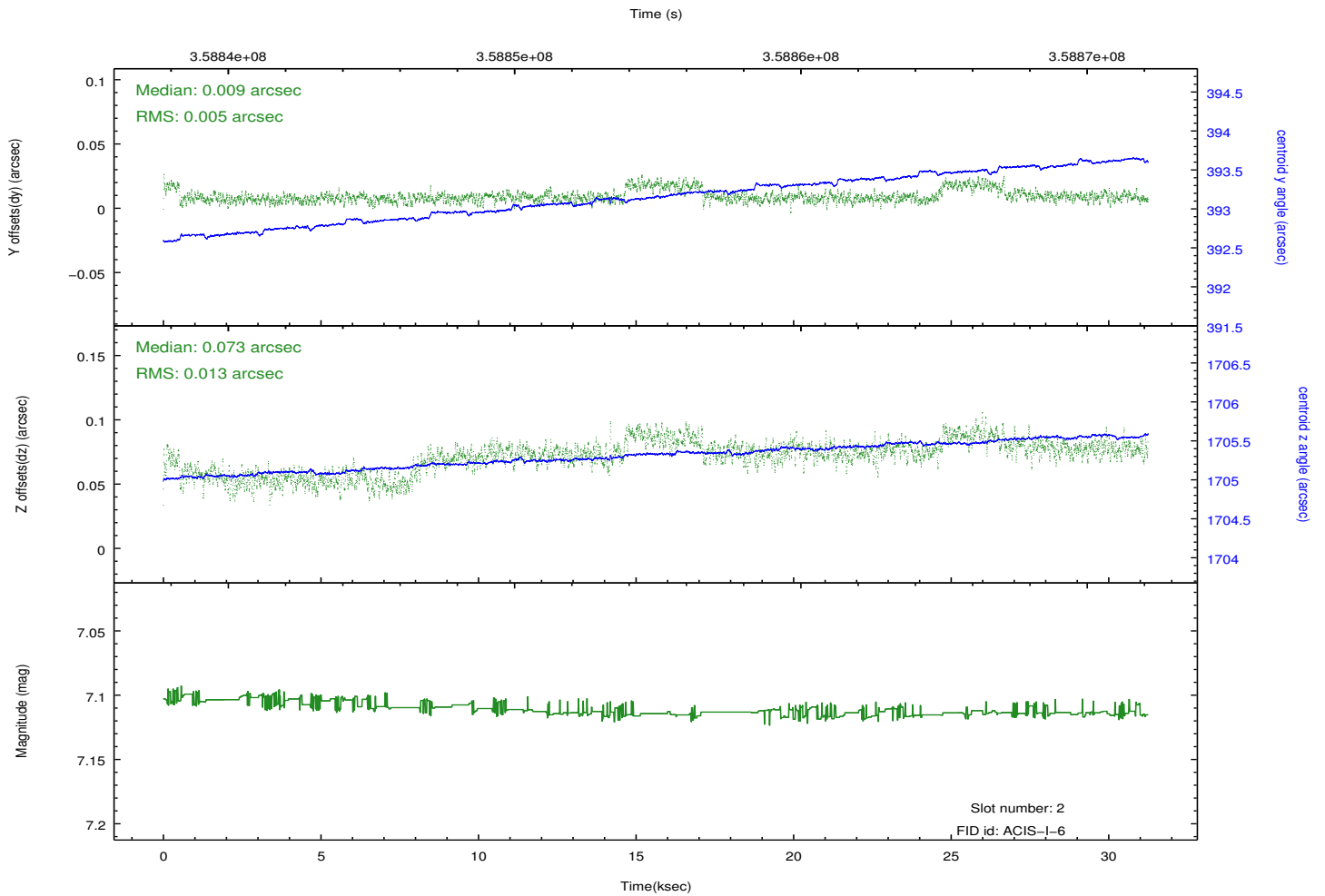
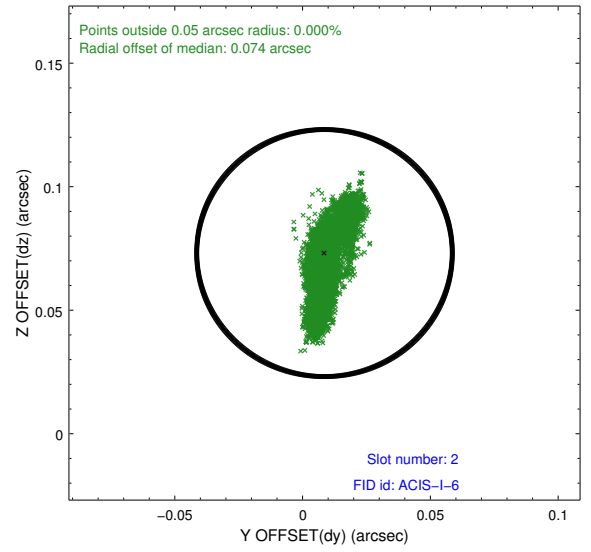
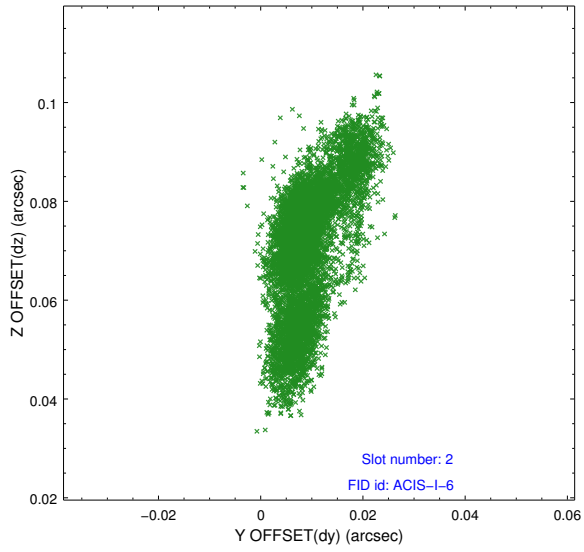
2.5.1 Slot 0



2.5.2 Slot 1



2.5.3 Slot 2



A Summary

A.1 Status

V&V Scientist	Beth Sundheim
V&V Date (YYYY-MM-DD)	2012.06.11
V&V Edition	1
V&V Disposition and Status	OK
V&V Charge Time	30.0389592

A.2 Comments