

V&V Reference Report

L2 ASCDS Version : 8.4.4

Observation 10131 - L2 Version 2
Chandra X-Ray Center

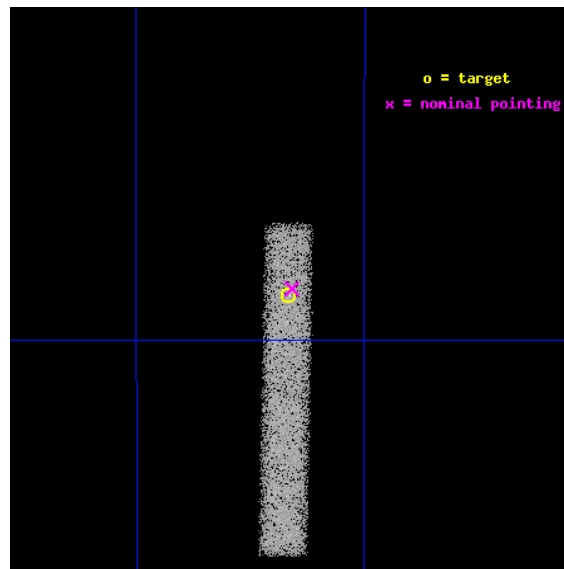
L2 Processing Date : May 31 2012

Contents

1	Front	2
2	OBI	3
2.1	OBI	3
2.1.1	Images	3
2.1.2	Bias	3
2.1.3	Parameters	4
2.1.4	Events	4
2.2	Compared Parameters	5
2.3	Aspect	6
2.4	Star Slots	9
2.4.1	Slot 3	9
2.4.2	Slot 4	10
2.4.3	Slot 5	11
2.4.4	Slot 6	12
2.4.5	Slot 7	13
2.5	FID Slots	14
2.5.1	Slot 0	14
2.5.2	Slot 1	15
2.5.3	Slot 2	16
A	Summary	17
A.1	Status	17
A.2	Comments	17

1 Front

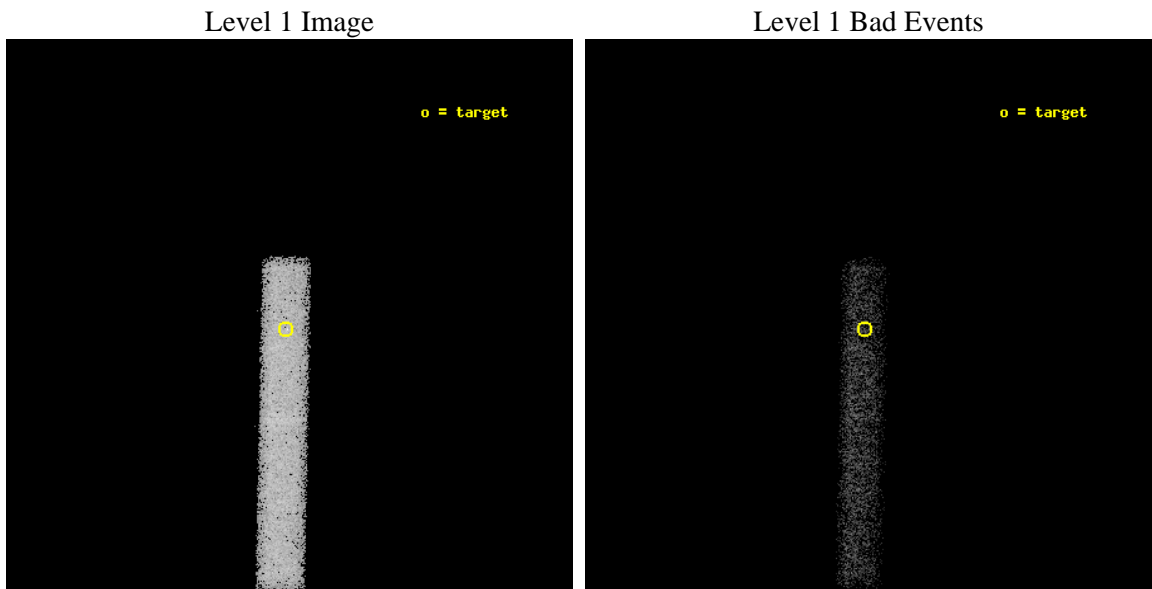
seq_num	501058	Sequence number
obs_id	10131	Observation id
title	The High-B Radio Pulsar PSR J1718-3718: A Quiescent Magnetar?	Prop
observer	Dr Maura McLaughlin	Principal investigator
object	J1718-3718	Source name
dtycycle	0	
cycle	P	events from which exps? Prim/Second/Both
ra_targ	259.541667	Observer's specified target RA [deg]
dec_targ	-37.313889	Observer's specified target Dec [deg]
ra_nom	259.53987058317	Nominal RA [deg]
dec_nom	-37.311475457032	Nominal Dec [deg]
roll_nom	91.13026387242	Nominal Roll [deg]
revision	2	Processing version of data
ontime	35318.397894859	Sum of GTIs [s]
lifetime	32031.92263274	Lifetime [s]
ontime7	35318.397894859	Sum of GTIs [s]
l2events	20541	Number of level 2 events



2 OBI

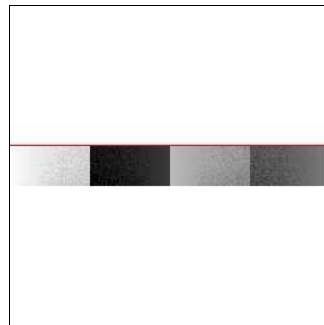
2.1 OBI

2.1.1 Images



2.1.2 Bias

Chip 7



2.1.3 Parameters

obi_num	0	Obi number	sched_exp_time	35167.000000	[s] Scheduled observation exposure time
ascdsver	8.4.4	Processing system revision	ontime	35318.397894859	Sum of GTIs [s]
caldbver	4.4.9	 	ontime7	35318.397894859	Sum of GTIs [s]
date	2012-05-31T02:40:29	Date and time of file creation	l1events	39955	Number of level 1 events
revision	2	Processing version of data			

2.1.4 Events

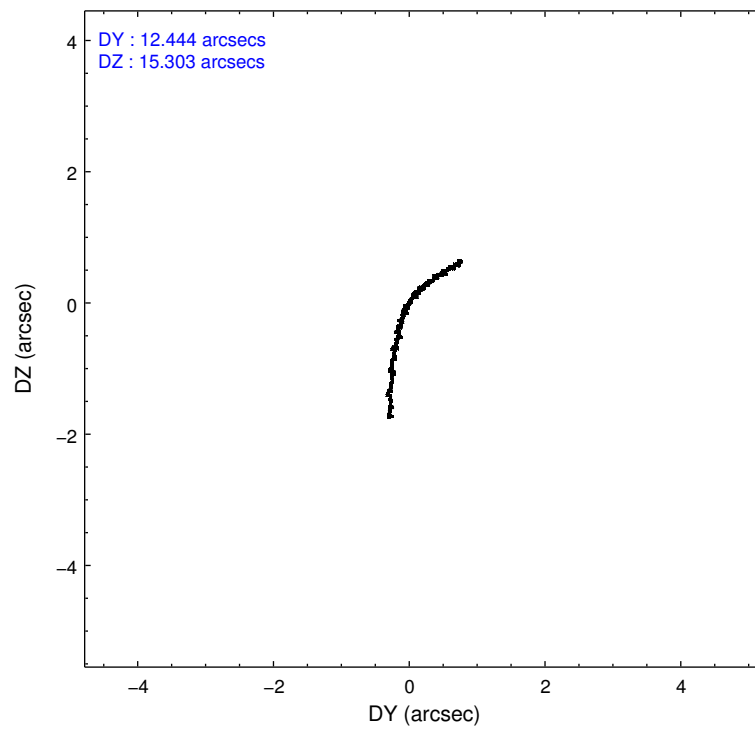
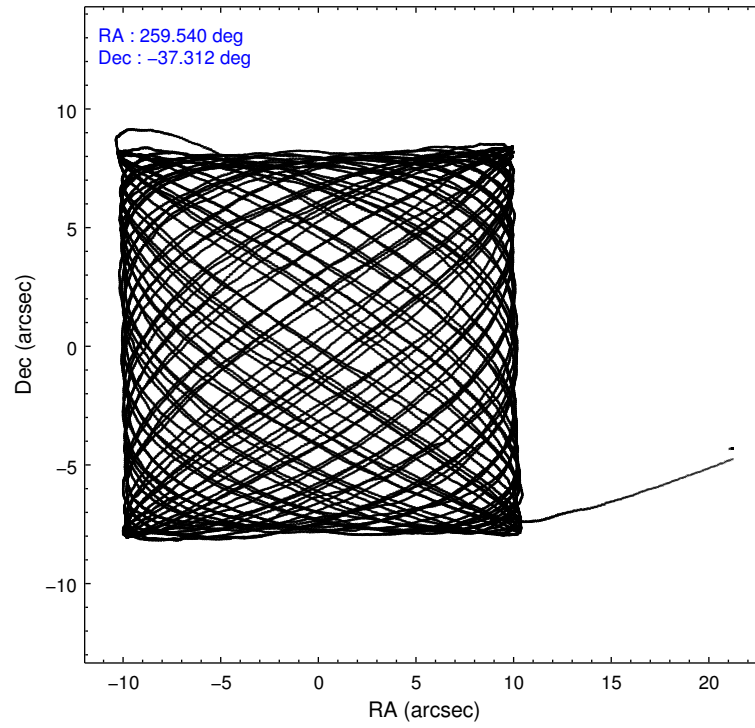
	ccd 7
level 1 events	39955
rejected events	18354
rejected %	45%

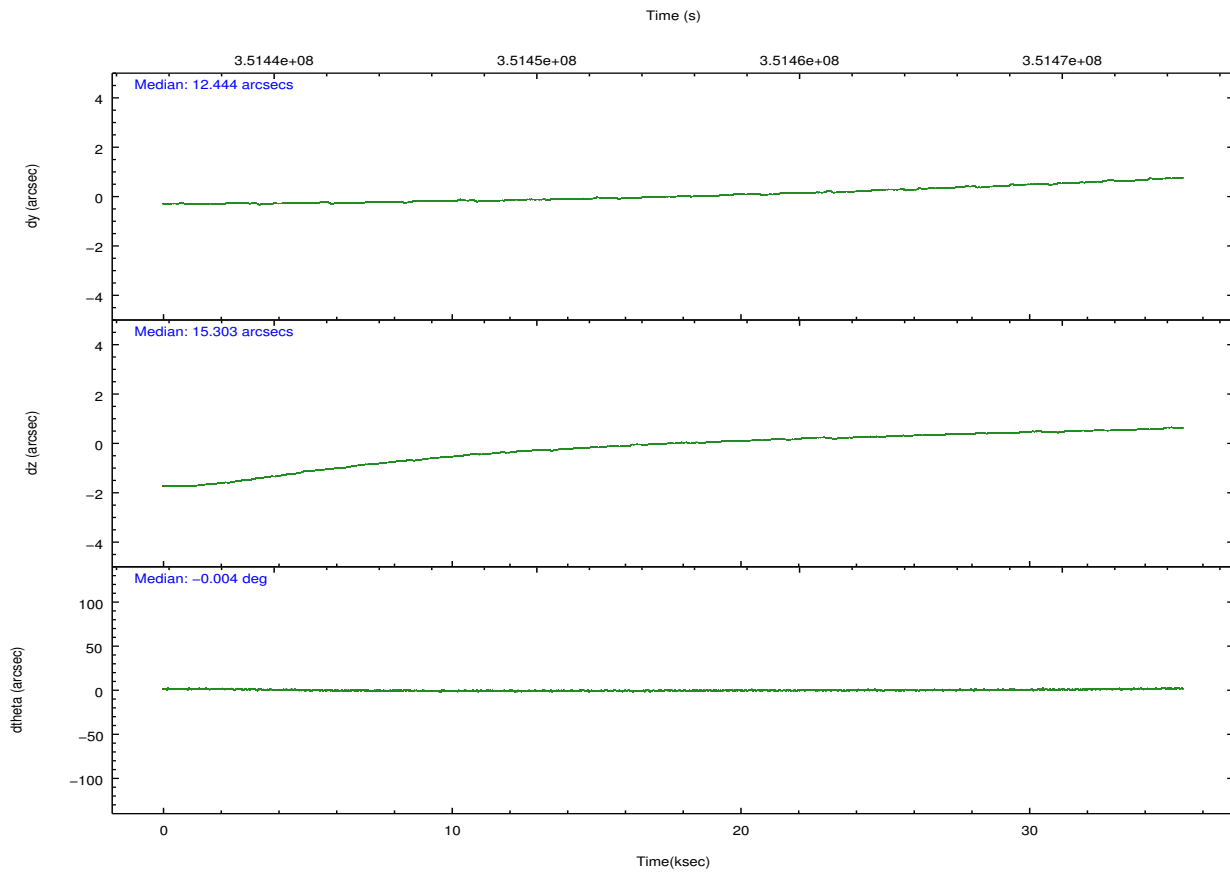
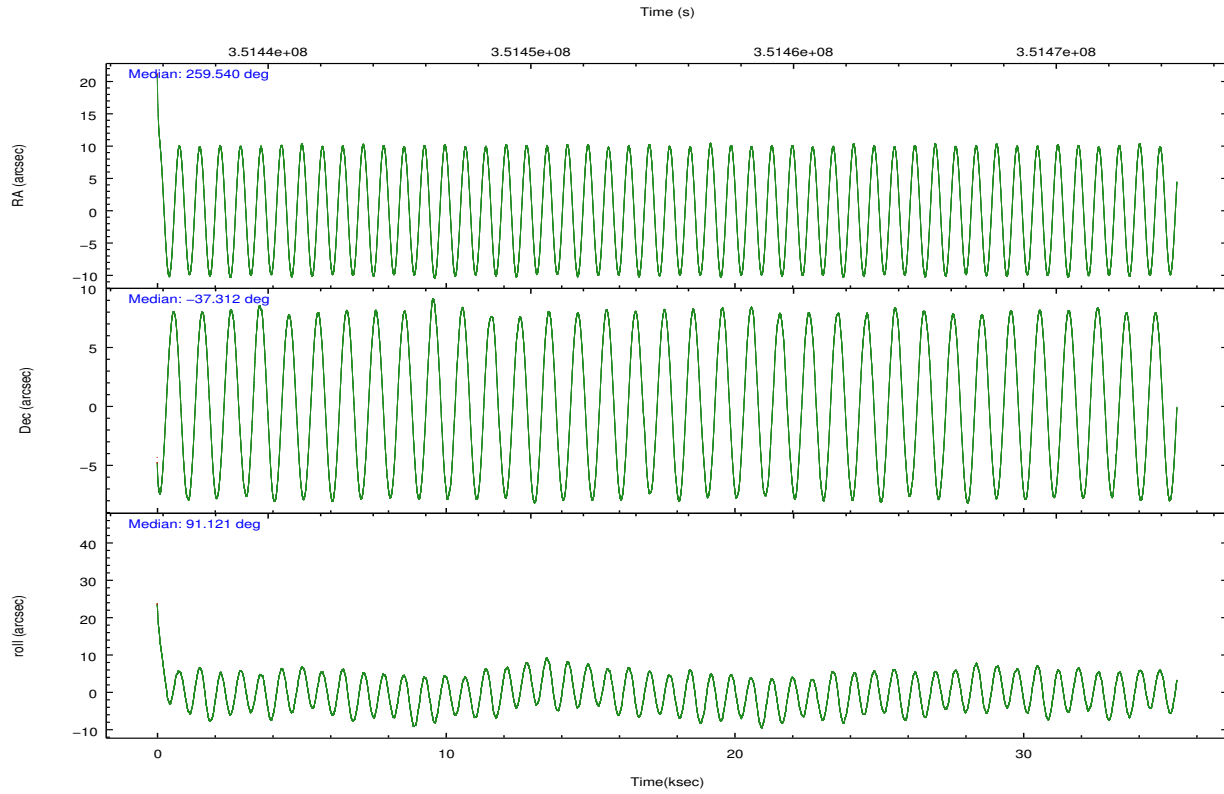
	ccd 7
grade 0 events	2545
	6%
grade 1 events	73
	0%
grade 2 events	4443
	11%
grade 3 events	3173
	7%
grade 4 events	3131
	7%
grade 5 events	3999
	10%
grade 6 events	8889
	22%
grade 7 events	13702
	34%

2.2 Compared Parameters

Parameter	Planned	Actual	Parameter	Planned	Actual
Instrument	ACIS	ACIS	Obspar format version number	7	7
Detector	ACIS-7	ACIS-7	Obspar file type	PREDICTED	ACTUAL
Grating	NONE	NONE	Obspar update status	NONE	UPDATED
Data mode	VFAINT	VFAINT	Number of optional ACIS chips dropped	0	0
Observation mode	POINTING	POINTING	On-chip summing requested	N	N
[deg] Pointing RA	259.558047	259.5398705831692	Subarray requested	CUSTOM	1/8
[deg] Pointing Dec	-37.334671	-37.31147545703195	Subarray start row	449	449
[deg] Pointing Roll	90.984651	91.13026387241977	Subarray row count	128	128
[mm] SIM focus pos	-0.684267	-0.6828225247311905	Alternating exposures requested	N	N
[mm] SIM defocus	0	0.001444936568705701	[s] Primary exposure time	0.000000	0.4
[mm] SIM translation stage pos	-190.132523	-190.1425803651734			
[mm] SIM translation stage offset	0	0.01005778216563158			
[s] Observation start time (MET)	351437676.184000	351436580.05973			
Observation start date	2009-02-19T13:33:30	2009-02-19T13:16:20			
[s] Observation end time (MET)	351472843.184000	351473399.08656			
Observation end date	2009-02-19T23:19:37	2009-02-19T23:29:59			
Read mode	TIMED	TIMED			

2.3 Aspect



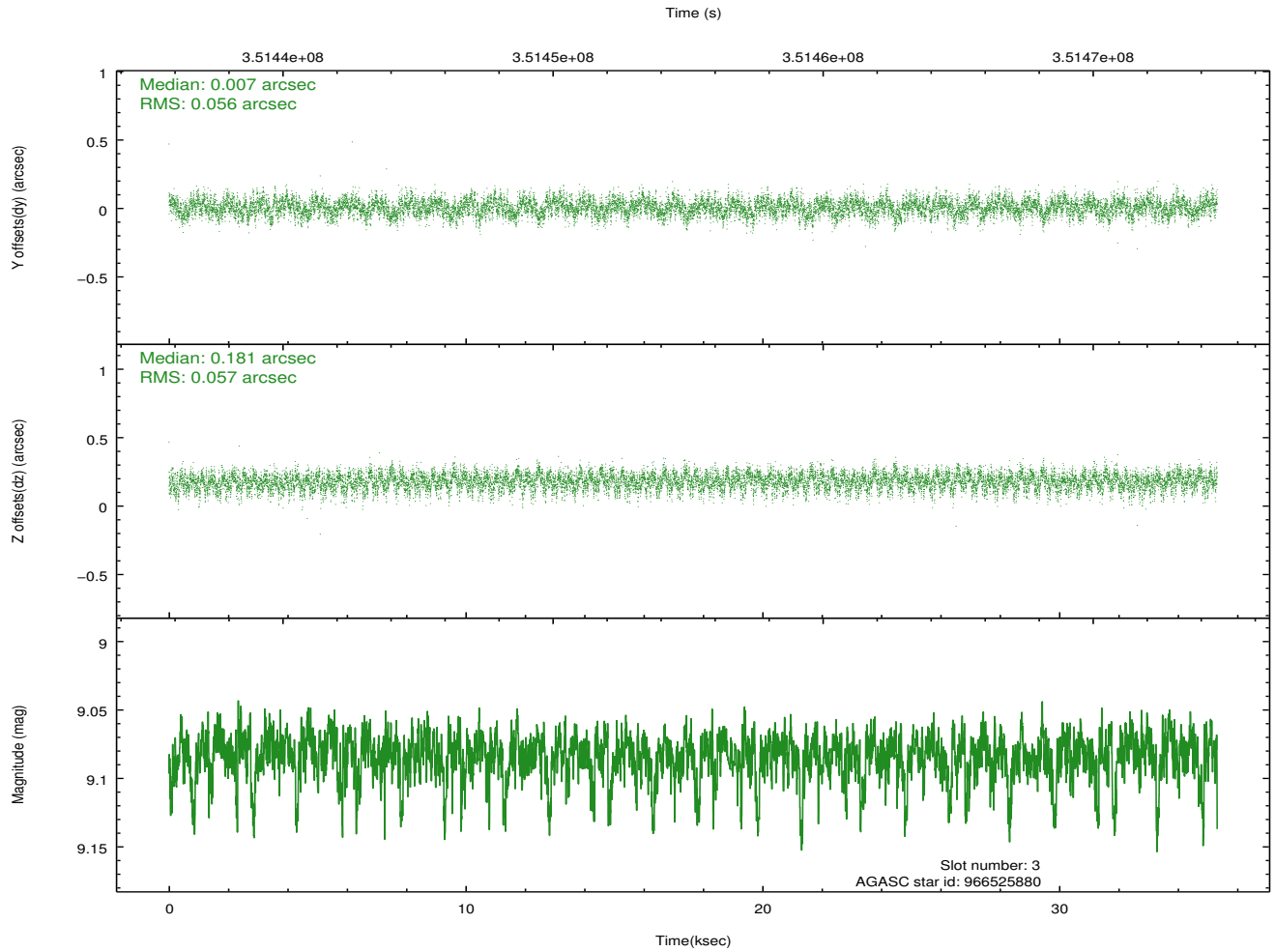
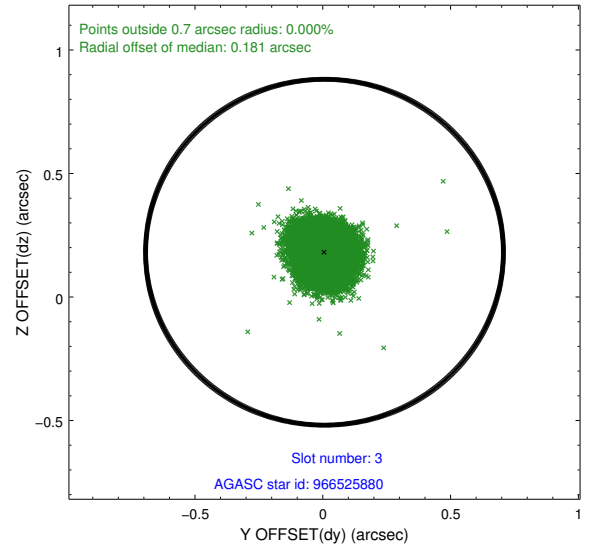
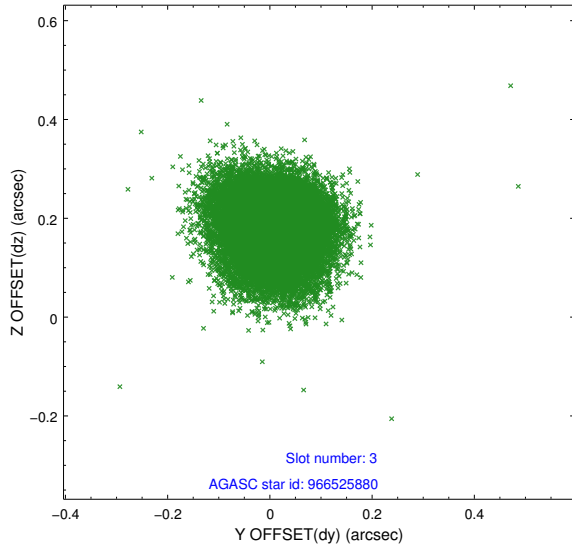


Slot Statistics

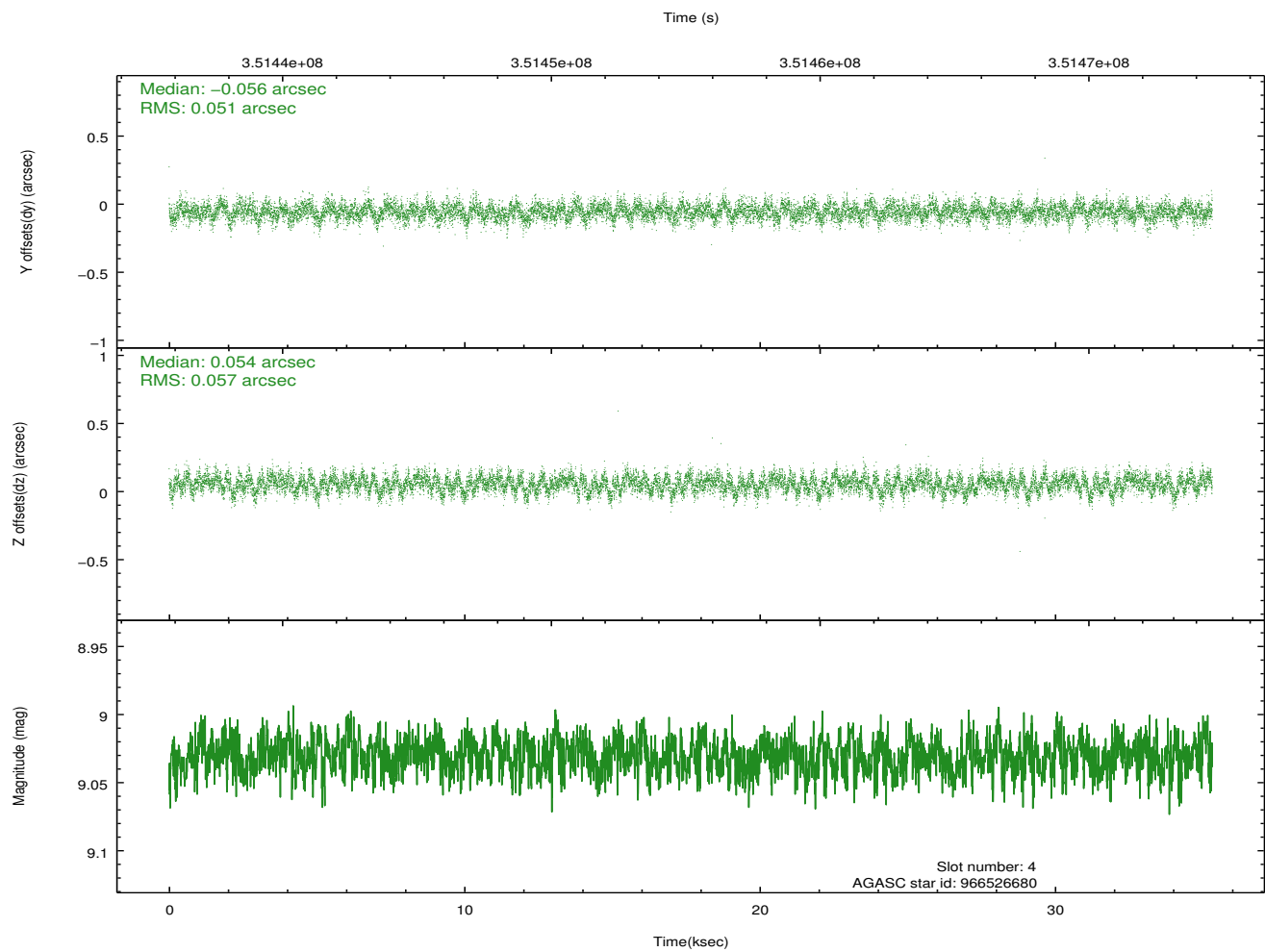
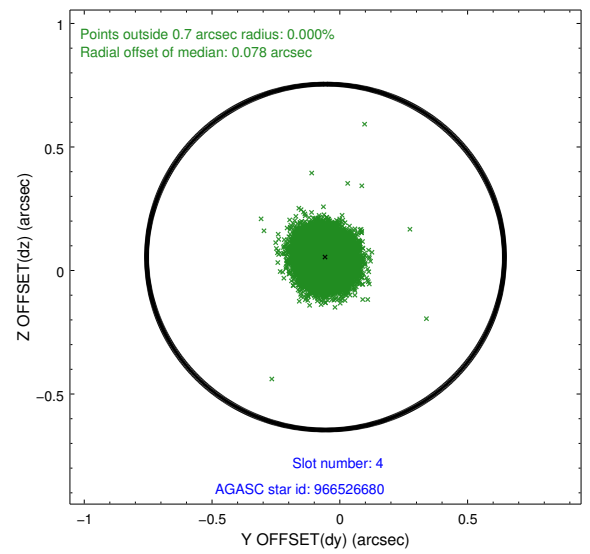
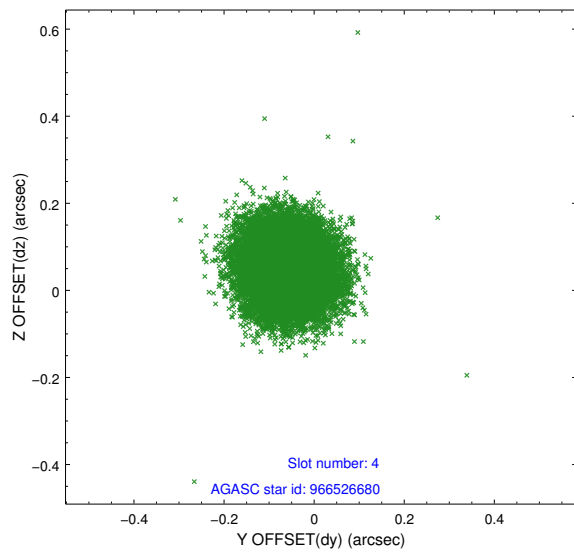
slot	status	id	mag	n_pts	med_dy	med_dz	dr1	dr2	ra	dec	mean_y	mean_z
0	FID	ACIS-S-2	6.90	8615	-0.074	-0.045	0.011	0.025	0.000000	0.000000	-765.49	-1736.46
1	FID	ACIS-S-4	6.98	8615	0.098	0.030	0.009	0.016	0.000000	0.000000	2147.93	172.06
2	FID	ACIS-S-6	7.12	8615	-0.054	0.022	0.012	0.021	0.000000	0.000000	396.55	809.49
3	GUIDE	966525880	9.08	17202	0.007	0.181	0.085	0.137	260.250454	-37.024776	1074.46	-2008.41
4	GUIDE	966526680	9.03	17217	-0.056	0.054	0.081	0.131	259.712281	-37.092655	863.50	-457.71
5	GUIDE	966527864	8.14	17226	0.248	-0.173	0.072	0.115	259.198901	-37.409371	-252.79	1031.27
6	GUIDE	966527920	8.33	17220	-0.000	-0.235	0.073	0.116	259.397566	-37.262380	267.90	455.15
7	GUIDE	966530176	8.78	17209	-0.196	0.175	0.083	0.139	260.167913	-36.682742	2311.11	-1800.20

2.4 Star Slots

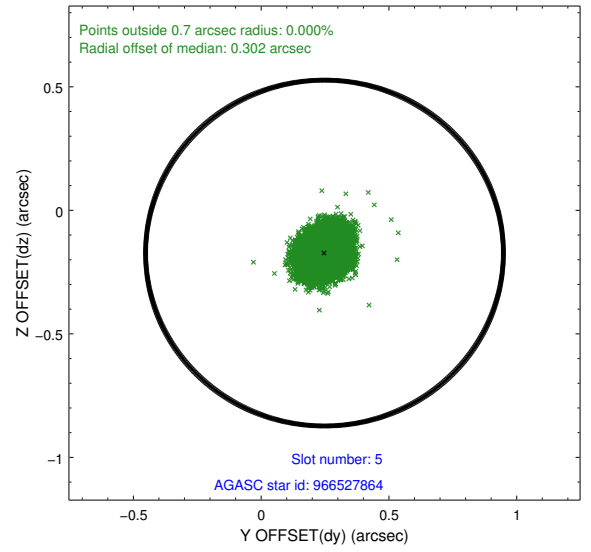
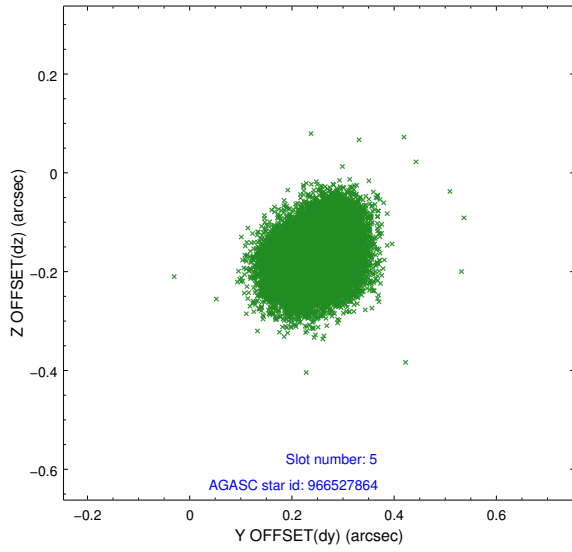
2.4.1 Slot 3



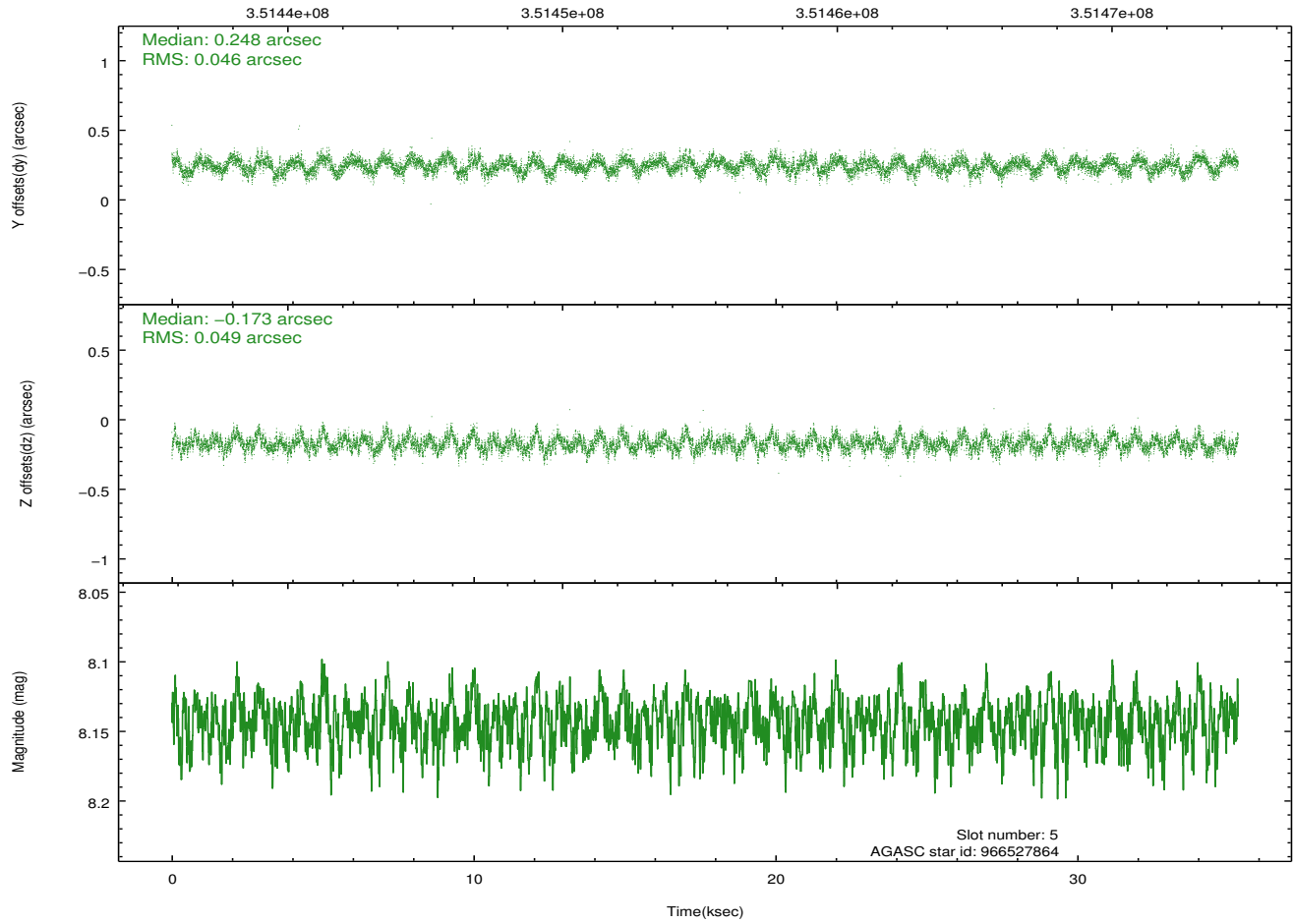
2.4.2 Slot 4



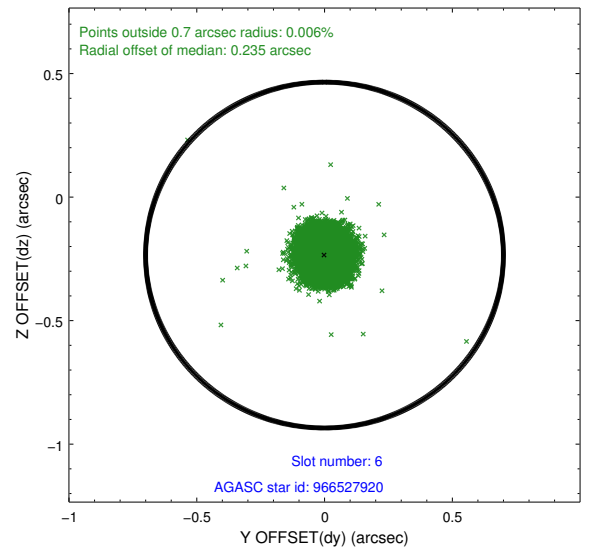
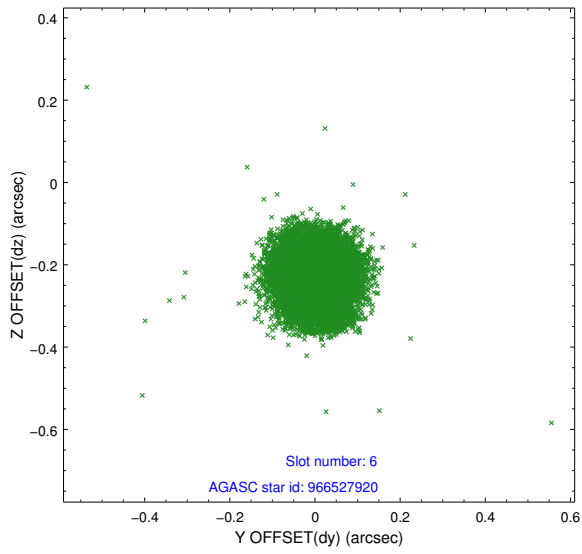
2.4.3 Slot 5



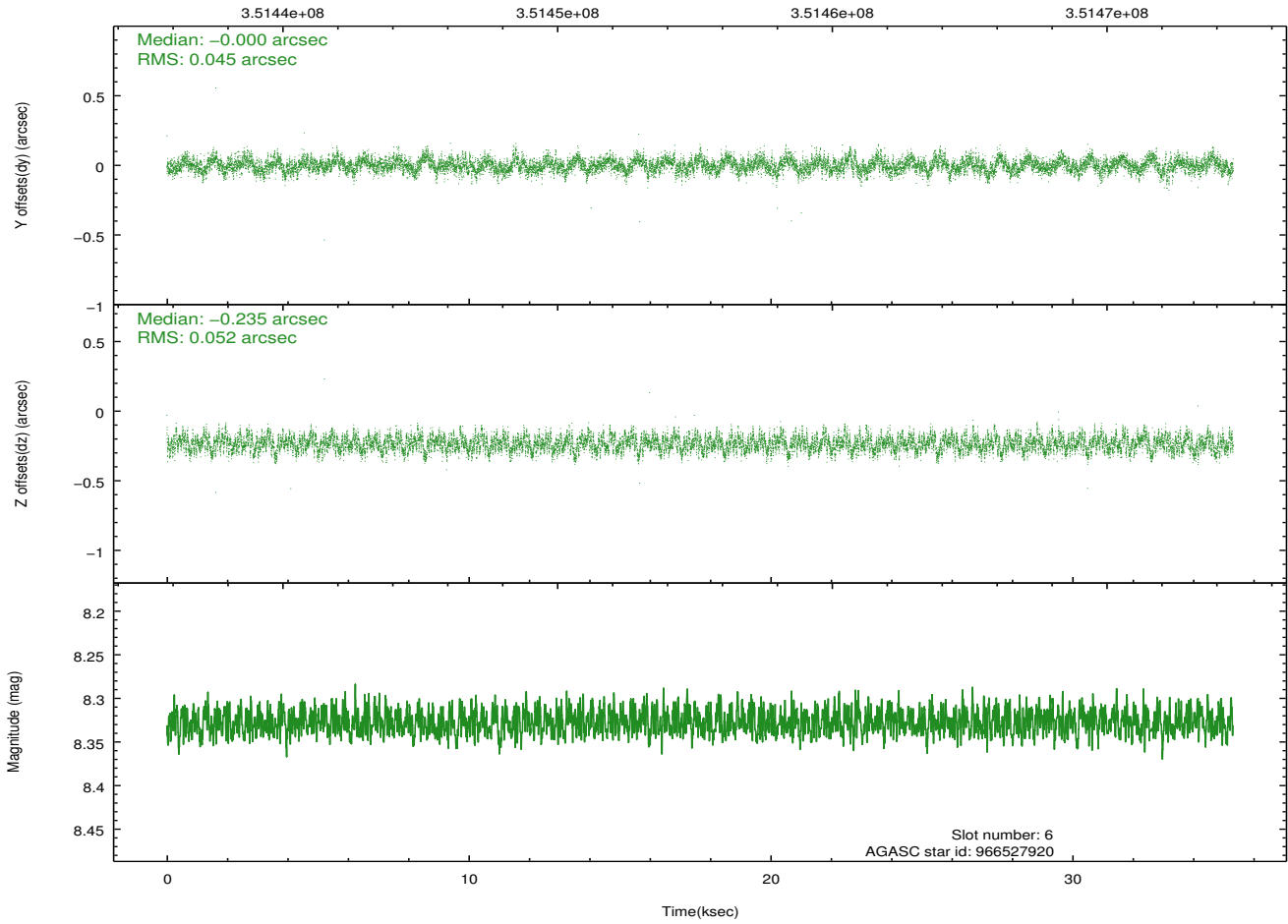
Time (s)



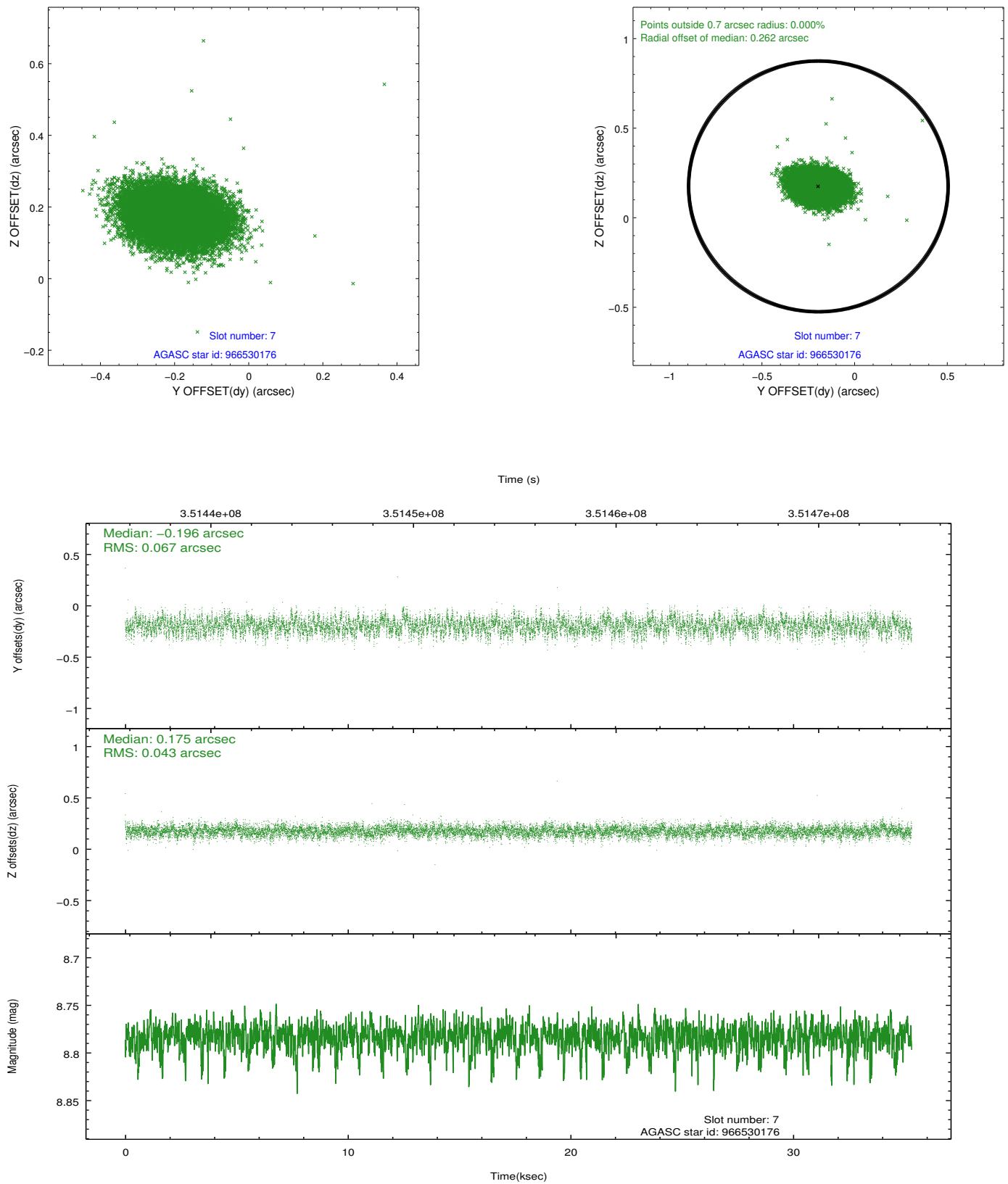
2.4.4 Slot 6



Time (s)

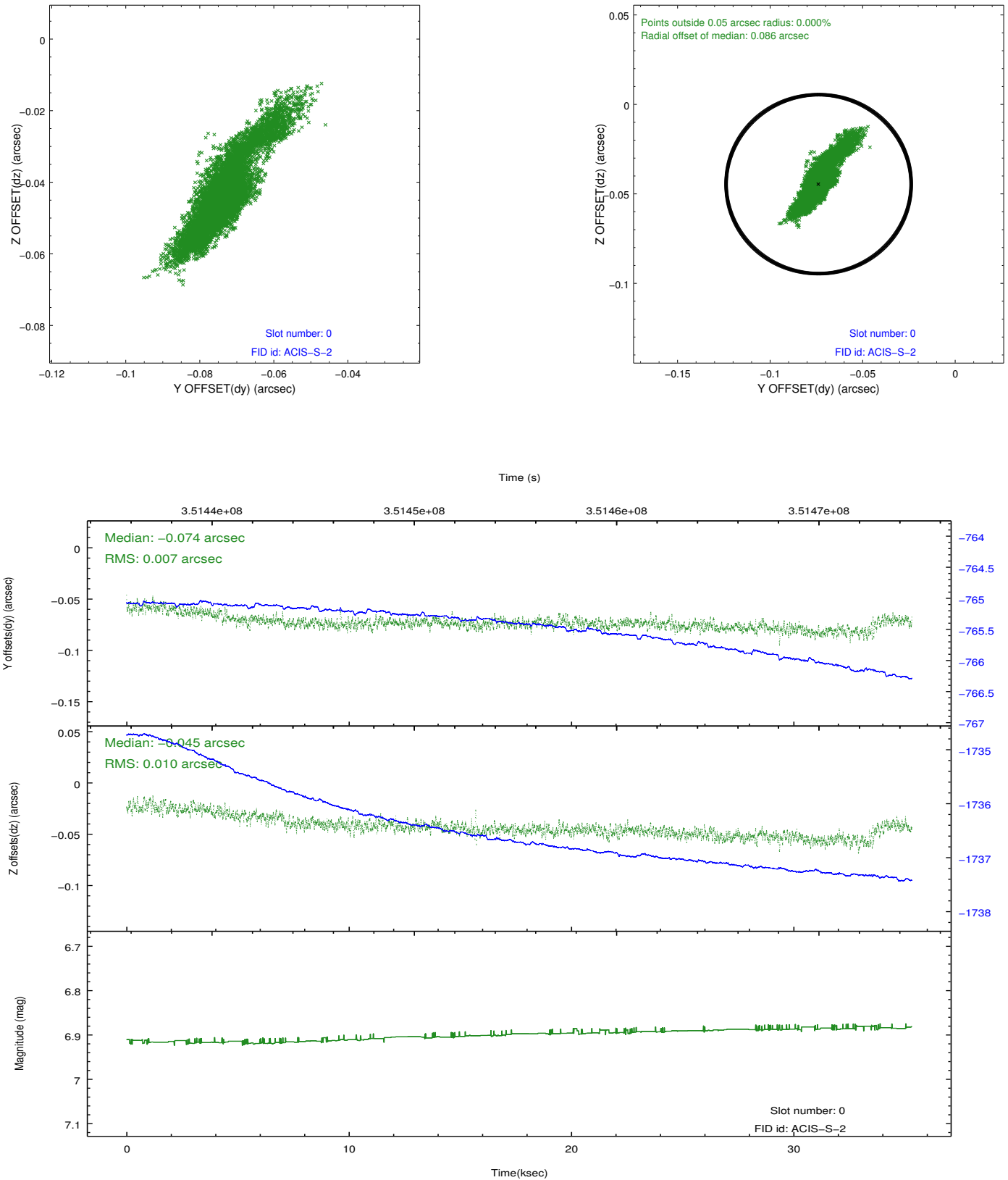


2.4.5 Slot 7

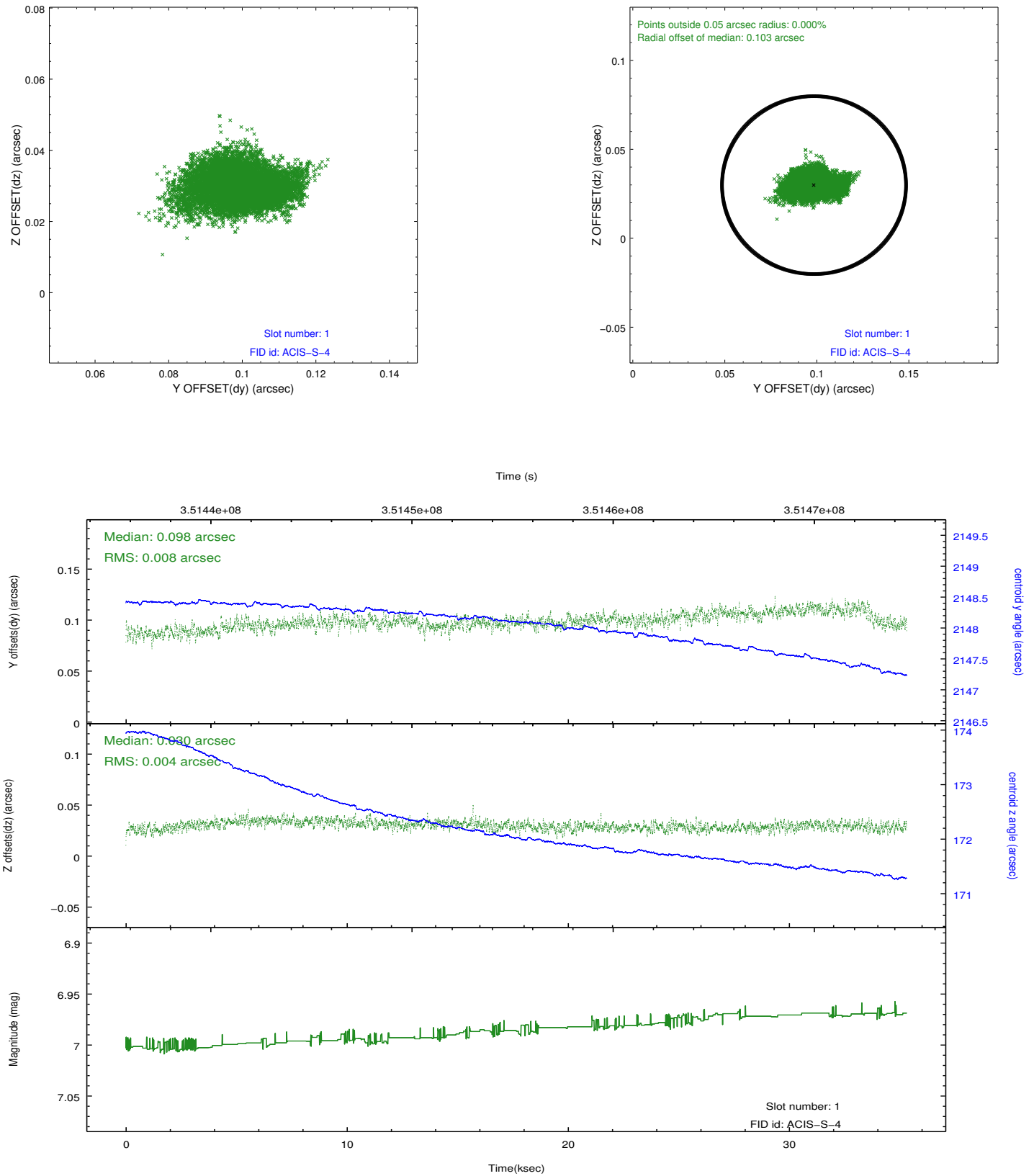


2.5 FID Slots

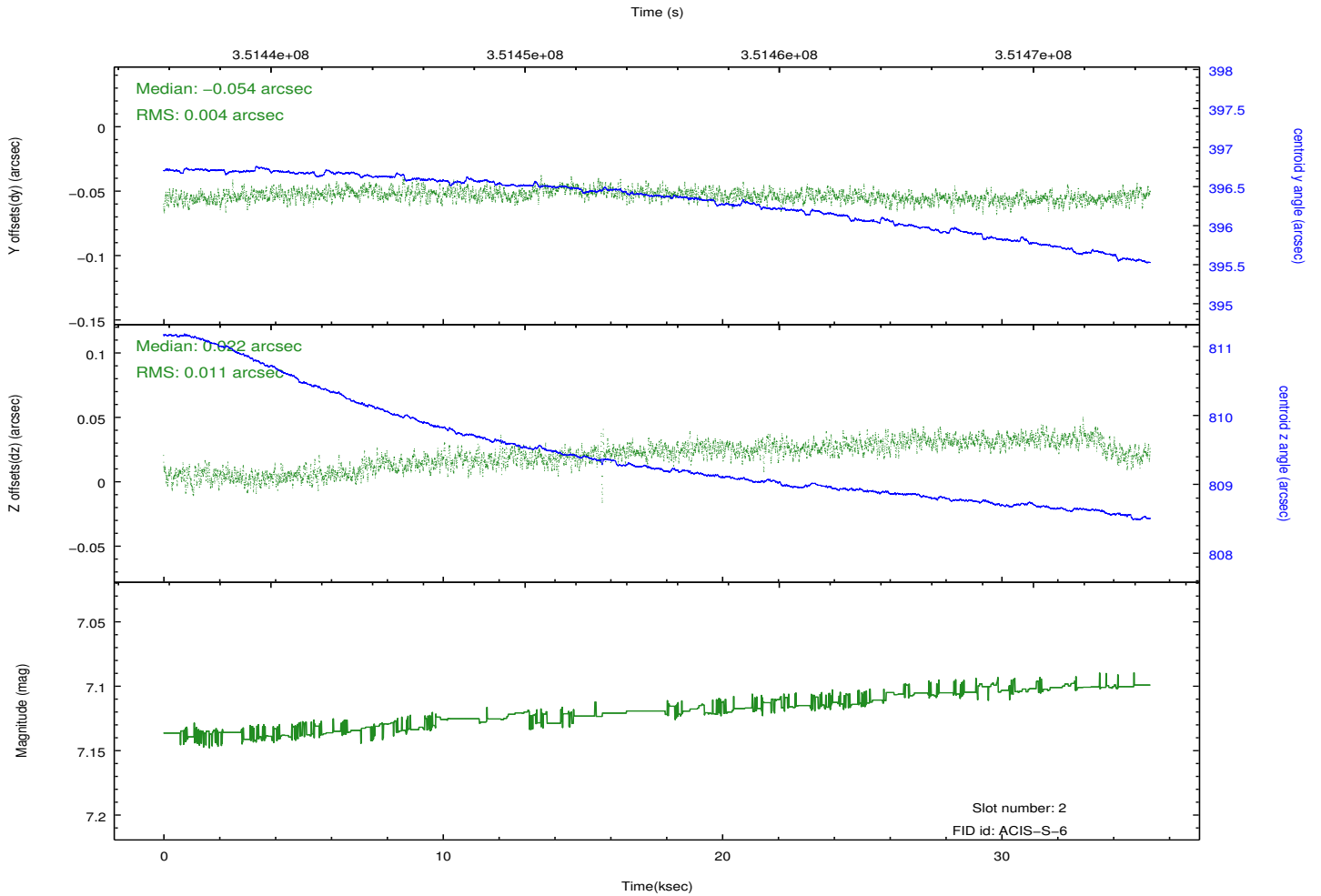
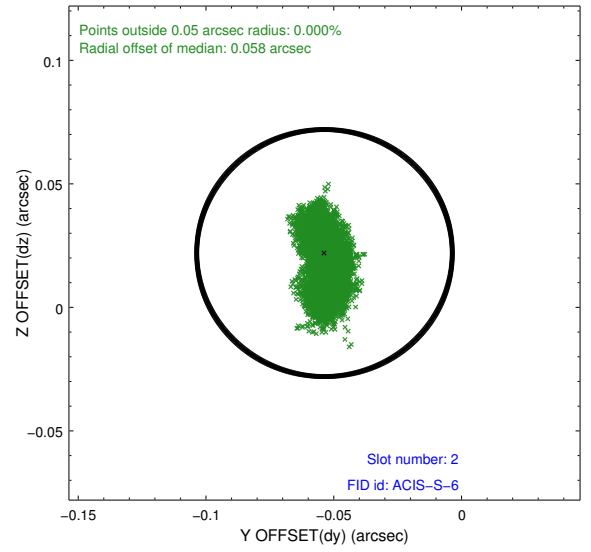
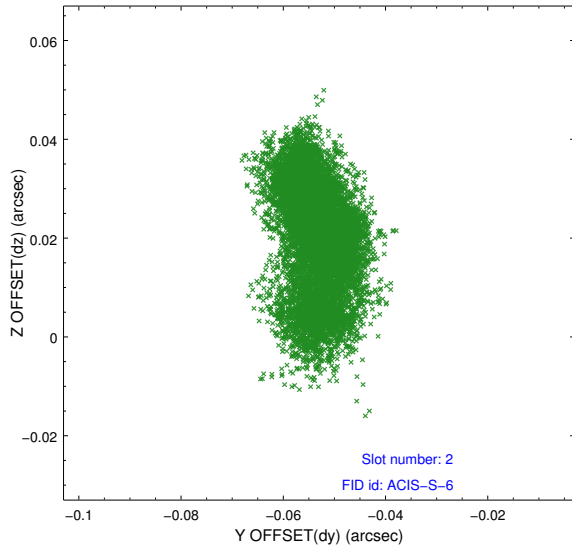
2.5.1 Slot 0



2.5.2 Slot 1



2.5.3 Slot 2



A Summary

A.1 Status

V&V Scientist	Jen Lauer
V&V Date (YYYY-MM-DD)	2012.06.05
V&V Edition	1
V&V Disposition and Status	OK
V&V Charge Time	35.3183978

A.2 Comments