

# V&V Reference Report

## L2 ASCDS Version : 8.4.5

Observation 1041 - L2 Version 3  
Chandra X-Ray Center

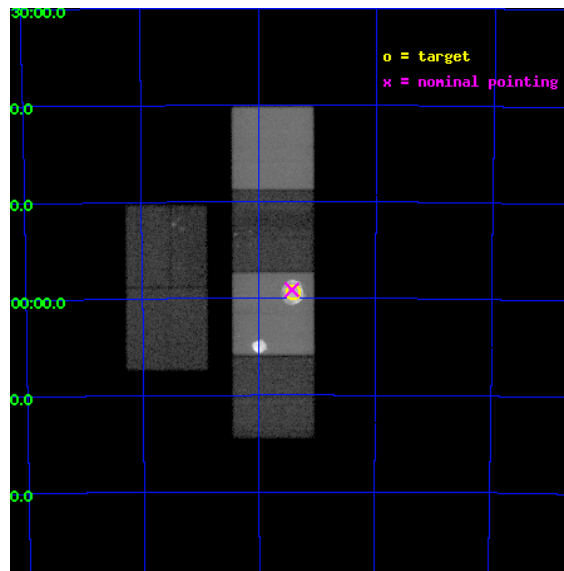
L2 Processing Date : Sep 24 2012

## Contents

<b>1</b>	<b>Front</b>	<b>2</b>
<b>2</b>	<b>OBI</b>	<b>3</b>
2.1	OBI . . . . .	3
2.1.1	Images . . . . .	3
2.1.2	Bias . . . . .	3
2.1.3	Parameters . . . . .	4
2.1.4	Events . . . . .	4
2.2	Compared Parameters . . . . .	5
2.3	Aspect . . . . .	6
2.4	Star Slots . . . . .	9
2.4.1	Slot 3 . . . . .	9
2.4.2	Slot 4 . . . . .	10
2.4.3	Slot 5 . . . . .	11
2.4.4	Slot 6 . . . . .	12
2.4.5	Slot 7 . . . . .	13
2.5	FID Slots . . . . .	14
2.5.1	Slot 0 . . . . .	14
2.5.2	Slot 1 . . . . .	15
2.5.3	Slot 2 . . . . .	16
<b>A</b>	<b>Summary</b>	<b>17</b>
A.1	Status . . . . .	17
A.2	Comments . . . . .	17

# 1 Front

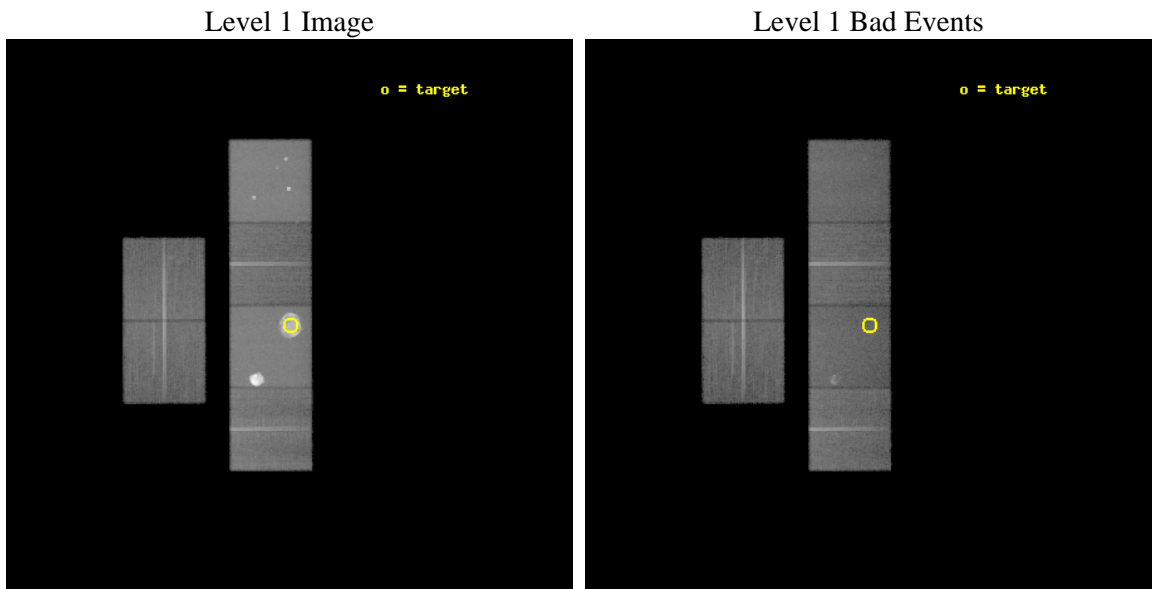
seq_num	500107	Sequence number
obs_id	1041	Observation id
title	OBSERVATION OF SNR N49B	Proposal title
observer	Professor Gordon Garmire	Principal investigator
object	N49B	Source name
dtcycle	0	&#160
cycle	P	events from which exps? Prim/Second/Both
ra_targ	81.354167	Observer's specified target RA [deg]
dec_targ	-65.989444	Observer's specified target Dec [deg]
ra_nom	81.358393816267	Nominal RA [deg]
dec_nom	-65.985374825488	Nominal Dec [deg]
roll_nom	89.798948486106	Nominal Roll [deg]
revision	3	Processing version of data
ontime	34297.55907169	Sum of GTIs [s]
livetime	33863.262727213	Livetime [s]
ontime2	34300.80003193	Sum of GTIs [s]
ontime3	34300.80003193	Sum of GTIs [s]
ontime5	34300.80003193	Sum of GTIs [s]
ontime6	34300.80003193	Sum of GTIs [s]
ontime7	34297.55907169	Sum of GTIs [s]
ontime8	34300.80003193	Sum of GTIs [s]
l2events	975286	Number of level 2 events



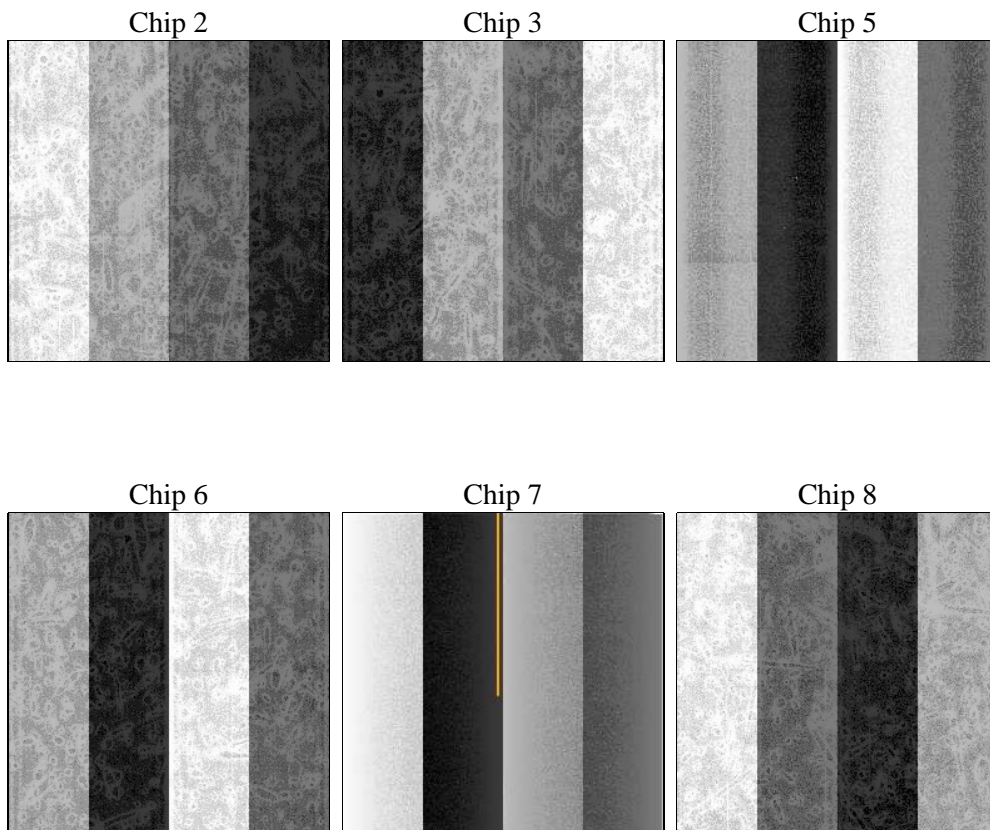
## 2 OBI

### 2.1 OBI

#### 2.1.1 Images



#### 2.1.2 Bias



### 2.1.3 Parameters

obi_num	0	Obi number	sched_exp_time	34352.599000	[s] Scheduled observation exposure time
ascdsver	8.4.5	Processing system revision	ontime	34297.55907169	Sum of GTIs [s]
caldbver	4.5.1.1	&#160	ontime2	34300.80003193	Sum of GTIs [s]
date	2012-09-24T10:30:55	Date and time of file creation	ontime3	34300.80003193	Sum of GTIs [s]
revision	3	Processing version of data	ontime5	34300.80003193	Sum of GTIs [s]
			ontime6	34300.80003193	Sum of GTIs [s]
			ontime7	34297.55907169	Sum of GTIs [s]
			ontime8	34300.80003193	Sum of GTIs [s]
			l1events	2231533	Number of level 1 events

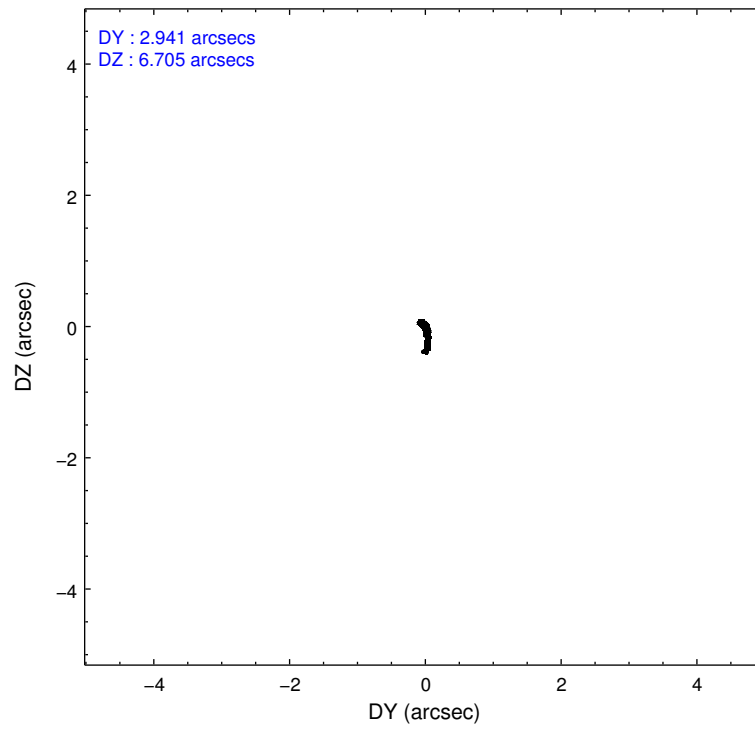
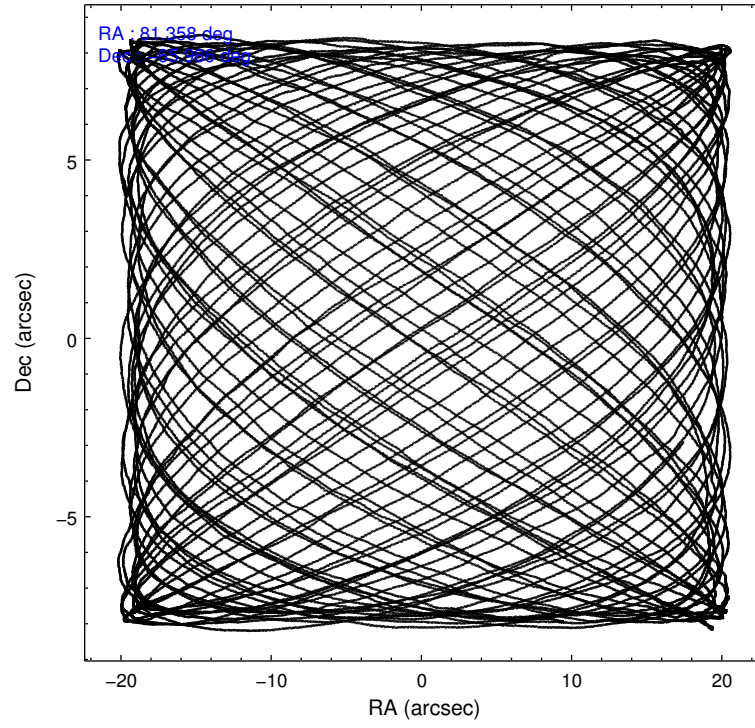
### 2.1.4 Events

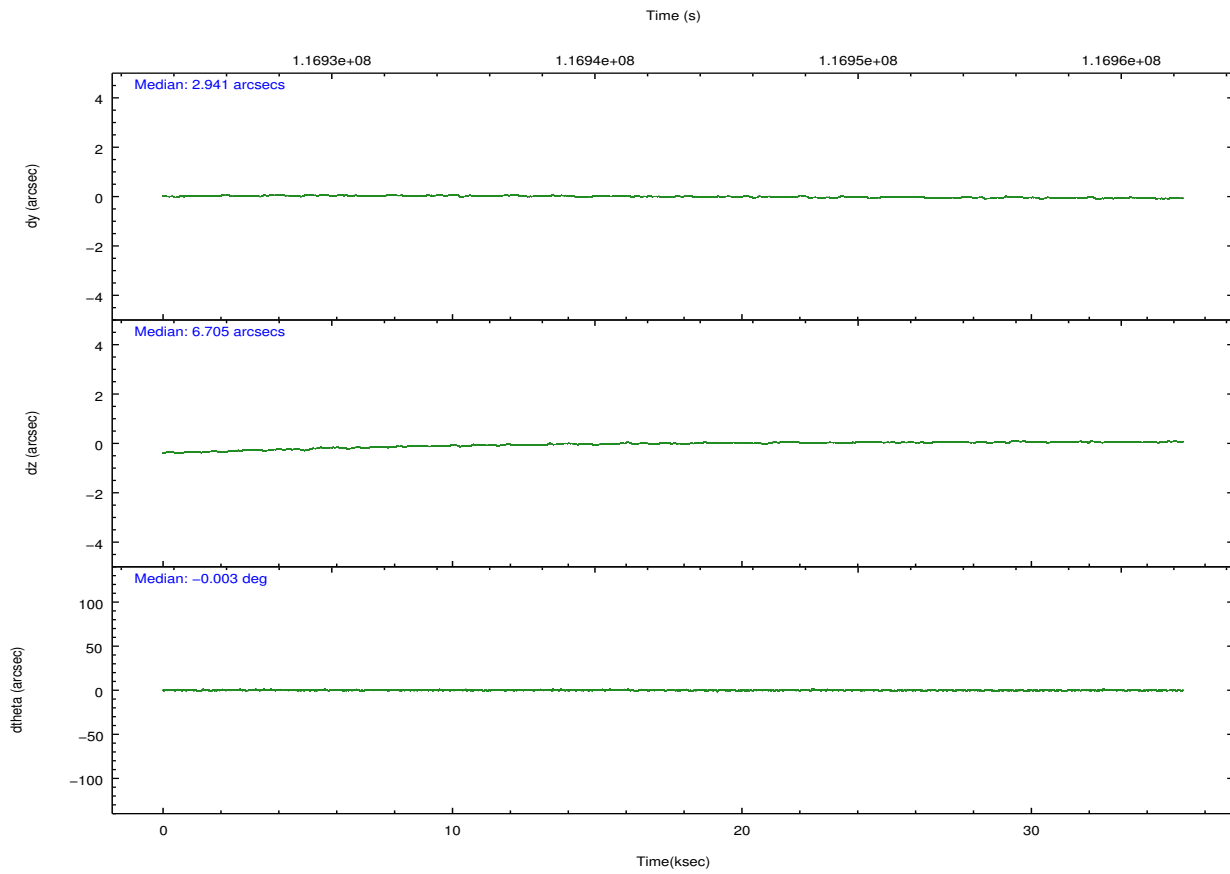
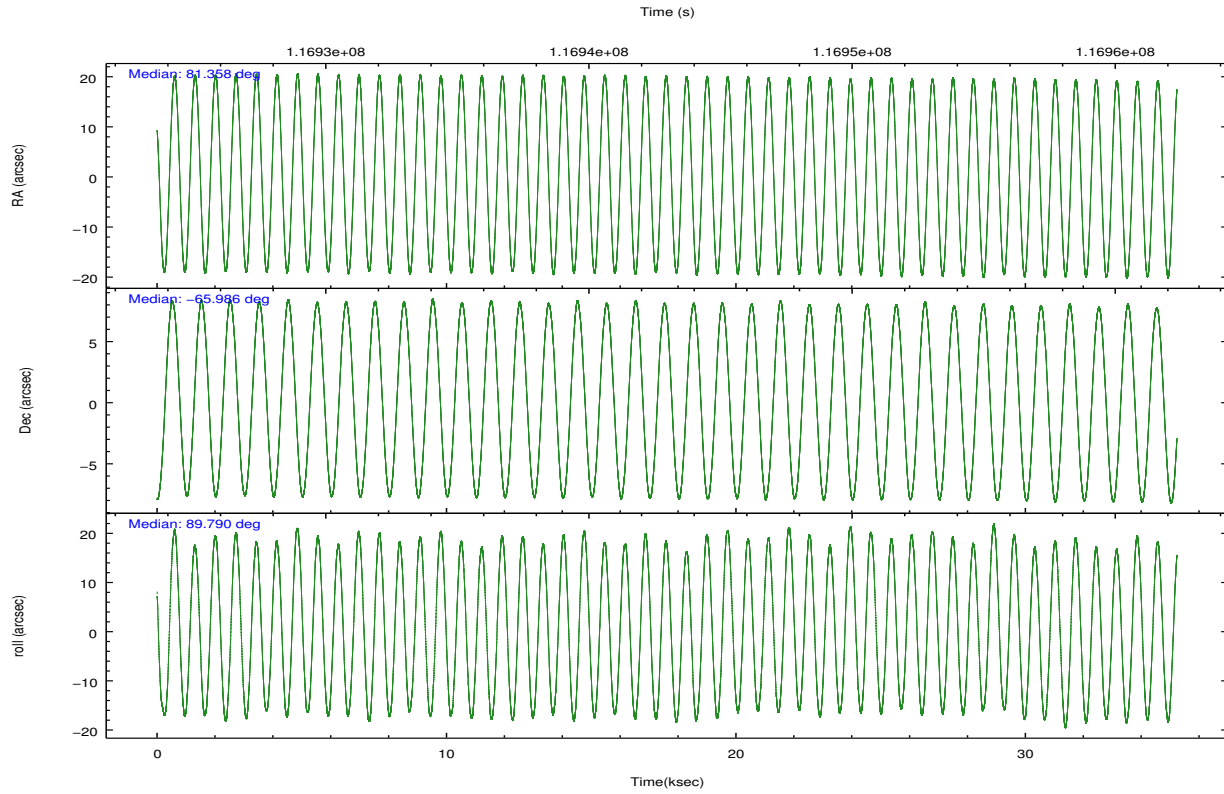
	ccd 2	ccd 3	ccd 5	ccd 6	ccd 7	ccd 8		ccd 2	ccd 3	ccd 5	ccd 6	ccd 7	ccd 8
level 1 events	238716	227248	423236	241811	798943	301579	grade 0 events	17796	16764	43753	20176	165726	29808
rejected events	204066	193990	178181	203746	173236	224769		7%	7%	10%	8%	20%	9%
rejected %	85%	85%	42%	84%	21%	74%	grade 1 events	116	129	641	131	827	208
								0%	0%	0%	0%	0%	0%
							grade 2 events	6679	6376	66583	6855	152349	14958
								2%	2%	15%	2%	19%	4%
							grade 3 events	2654	2620	12278	2848	67460	7716
								1%	1%	2%	1%	8%	2%
							grade 4 events	2610	2699	11959	2775	67072	7191
								1%	1%	2%	1%	8%	2%
							grade 5 events	7713	8615	24608	9357	31436	11743
								3%	3%	5%	3%	3%	3%
							grade 6 events	4977	4857	110588	5539	173247	17256
								2%	2%	26%	2%	21%	5%
							grade 7 events	196171	185188	152826	194130	140826	212699
								82%	81%	36%	80%	17%	70%

## 2.2 Compared Parameters

Parameter	Planned	Actual	Parameter	Planned	Actual
Instrument	ACIS	ACIS	Obspar format version number	7	7
Detector	ACIS-235678	ACIS-235678	Obspar file type	PREDICTED	ACTUAL
Grating	NONE	NONE	Obspar update status	NONE	UPDATED
Data mode	FAINT	FAINT	Number of optional ACIS chips dropped	0	0
Observation mode	POINTING	POINTING	On-chip summing requested	N	N
[deg] Pointing RA	81.392407	81.35839381626658	Subarray requested	NONE	NONE
[deg] Pointing Dec	-66.008855	-65.98537482548839	Alternating exposures requested	N	N
[deg] Pointing Roll	89.673389	89.79894848610599	[s] Primary exposure time	0.000000	3.2
[mm] SIM focus pos	-0.684267	-0.6828225247311905			
[mm] SIM defocus	0	0.001444936568705701			
[mm] SIM translation stage pos	-184.272523	-184.2716541360309			
[mm] SIM translation stage offset	-5.86	-5.860868446976951			
[s] Observation start time (MET)	116926235.184000	116924930.10347			
Observation start date	2001-09-15T07:29:31	2001-09-15T07:08:50			
[s] Observation end time (MET)	116960587.184000	116960901.96739			
Observation end date	2001-09-15T17:02:03	2001-09-15T17:08:21			
Read mode	TIMED	TIMED			

## 2.3 Aspect



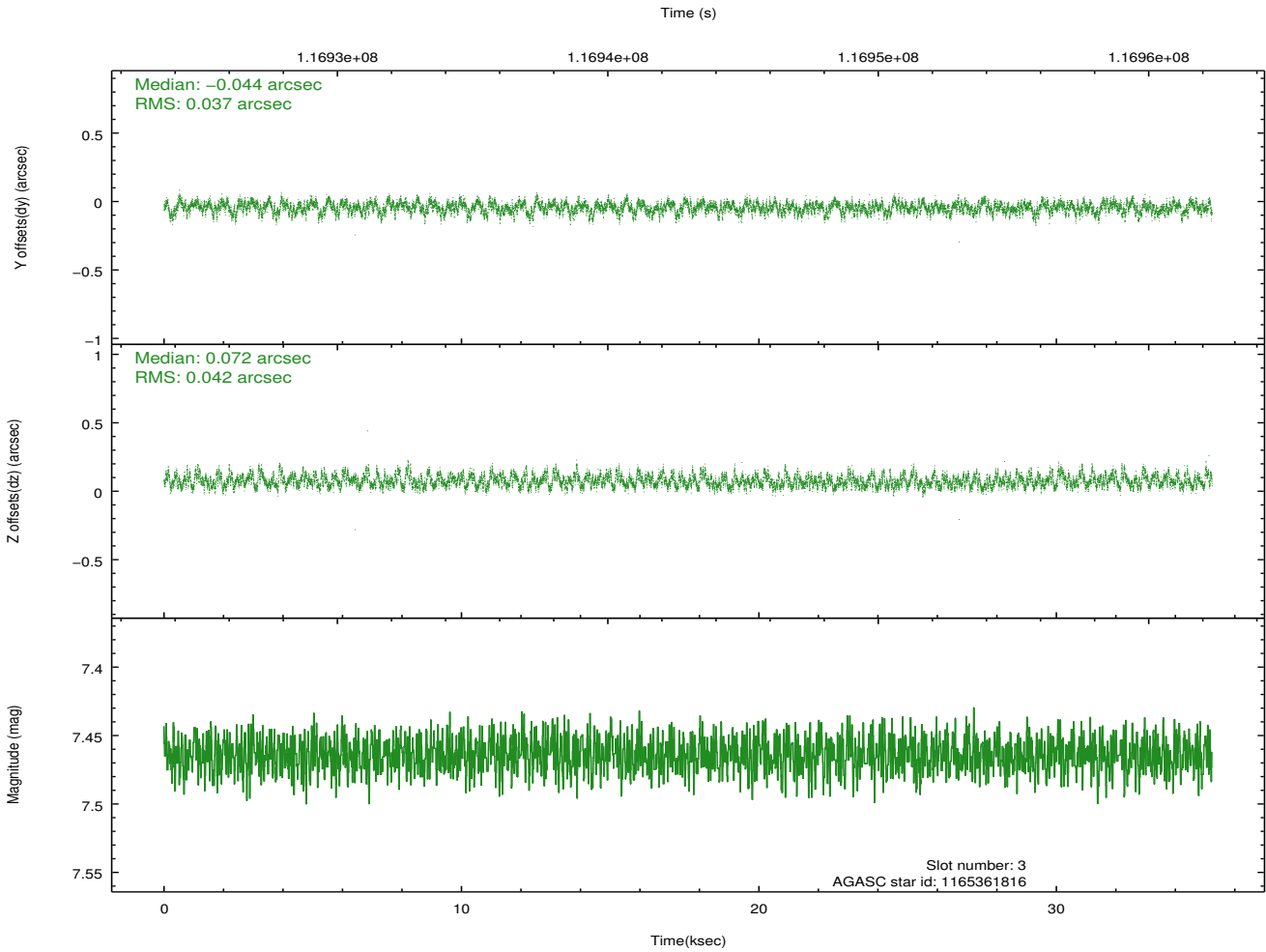
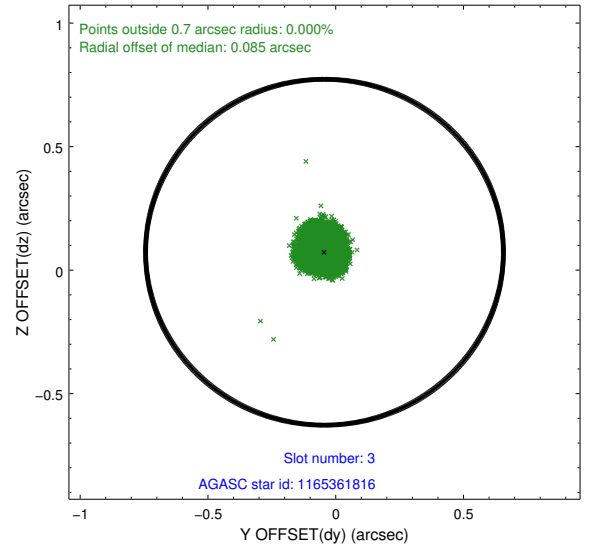
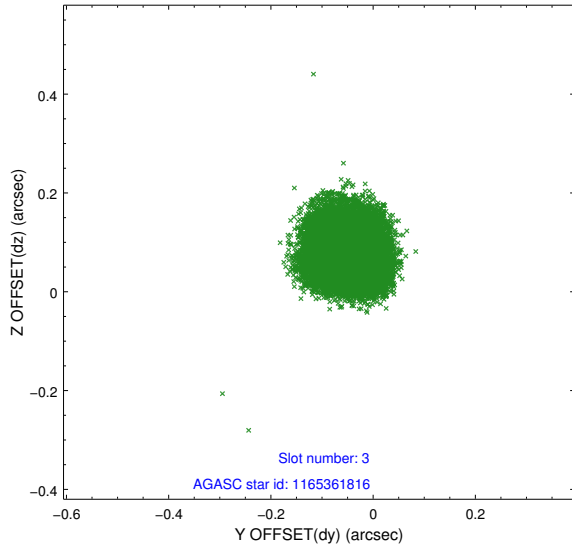


### Slot Statistics

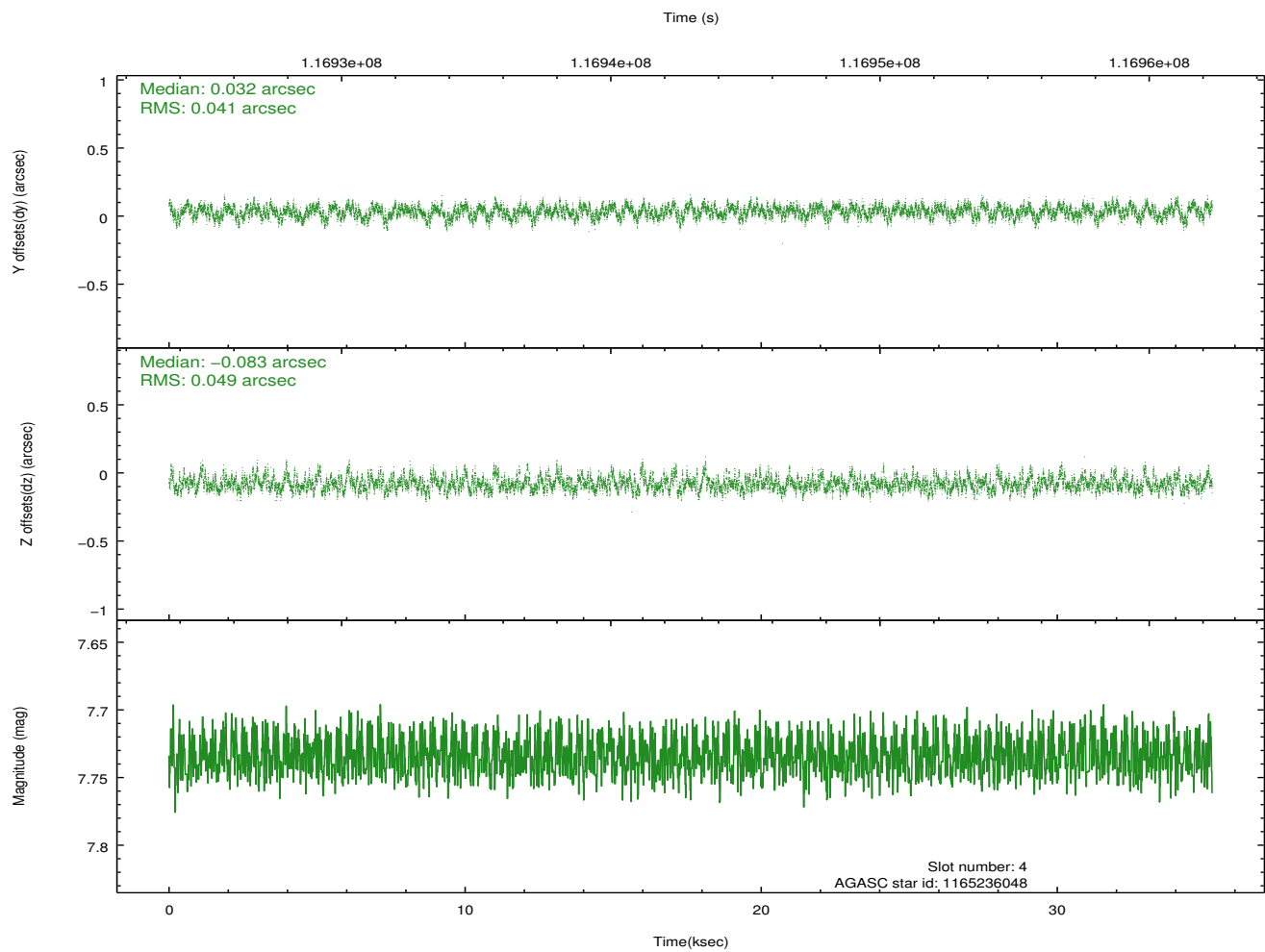
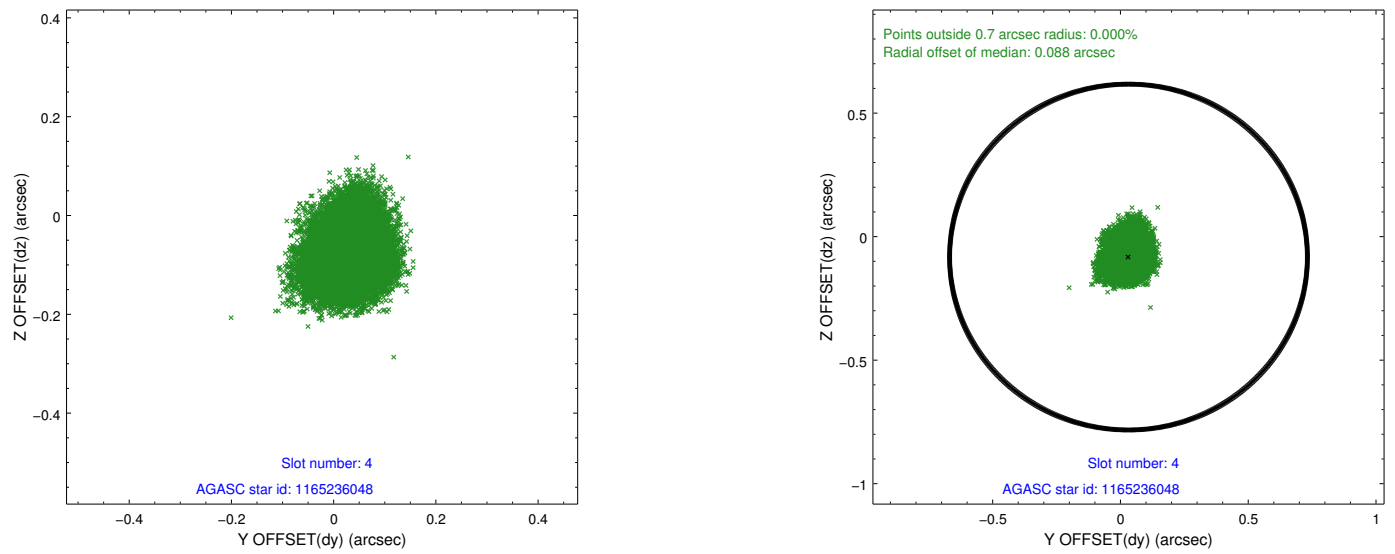
slot	status	id	mag	n_pts	med_dy	med_dz	dr1	dr2	ra	dec	mean_y	mean_z
0	FID	ACIS-S-2	7.08	8594	-0.028	-0.113	0.009	0.015	0.000000	0.000000	-755.22	-1848.72
1	FID	ACIS-S-4	7.19	8594	-0.030	0.043	0.007	0.012	0.000000	0.000000	2158.07	59.81
2	FID	ACIS-S-5	7.23	8594	0.027	0.078	0.008	0.013	0.000000	0.000000	-1807.93	53.62
3	GUIDE	1165361816	7.46	17186	-0.044	0.072	0.060	0.095	81.473501	-65.742228	961.07	-114.32
4	GUIDE	1165236048	7.73	17184	0.032	-0.083	0.068	0.110	80.001541	-66.057801	-209.79	2030.50
5	GUIDE	1165235856	8.26	17181	0.041	-0.013	0.070	0.115	79.957487	-66.443092	-1598.31	2055.14
6	GUIDE	1165237552	9.65	17181	-0.009	0.027	0.117	0.194	80.257142	-65.800667	725.09	1679.58
7	GUIDE	1165237040	10.03	17003	-0.009	-0.007	0.180	0.291	80.427842	-65.641485	1303.86	1439.94

## 2.4 Star Slots

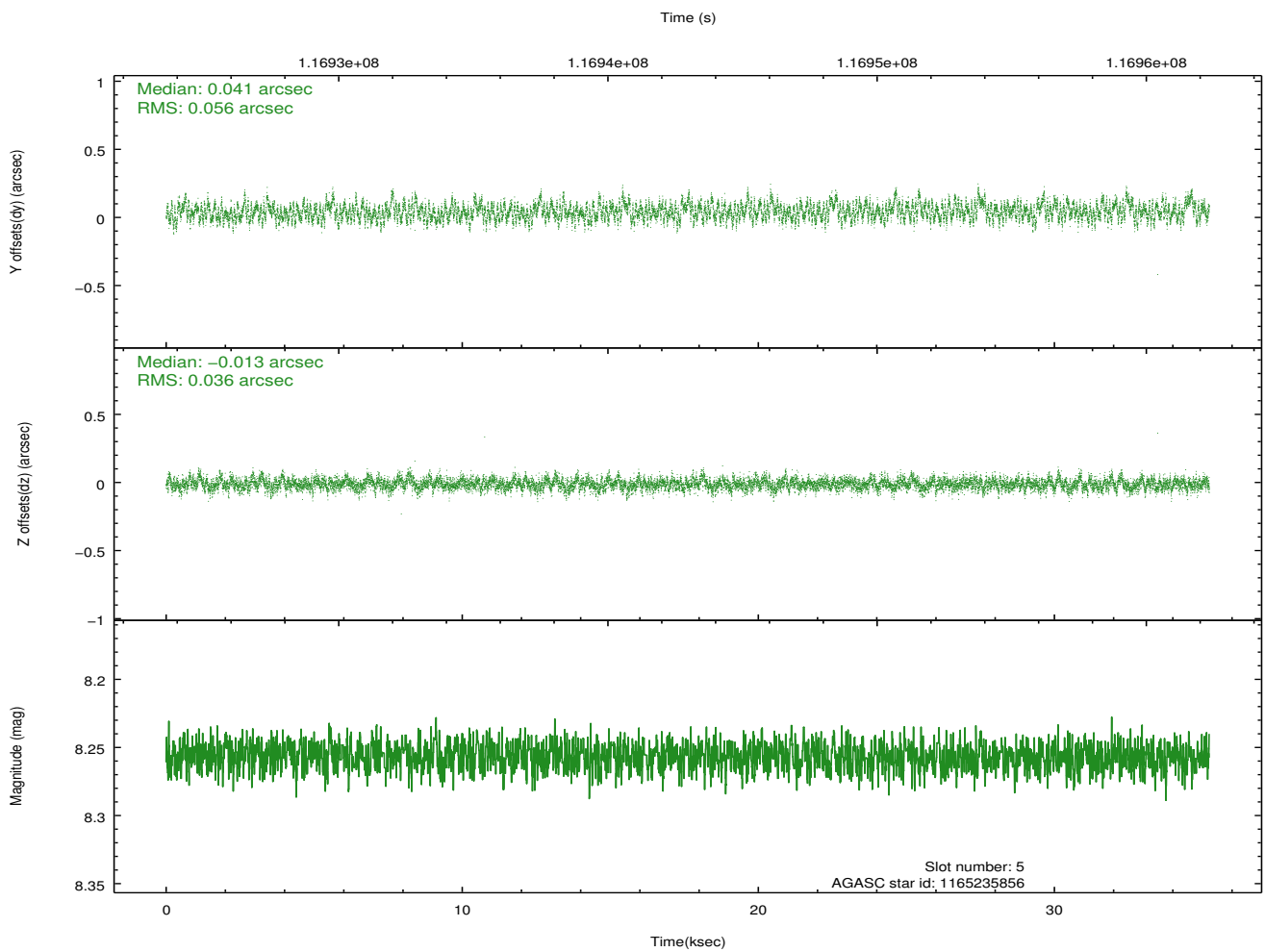
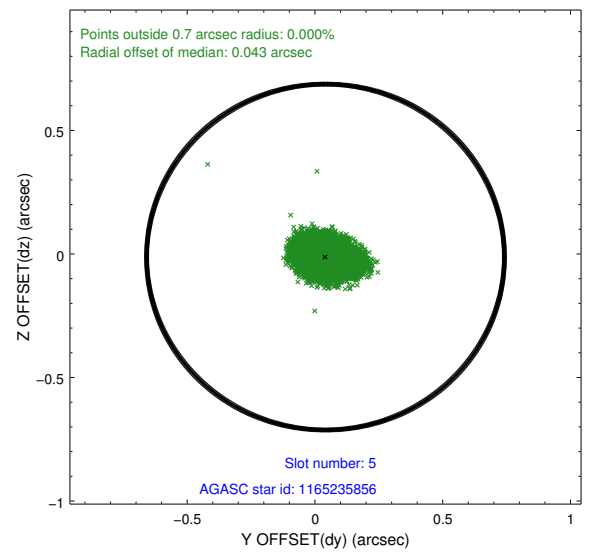
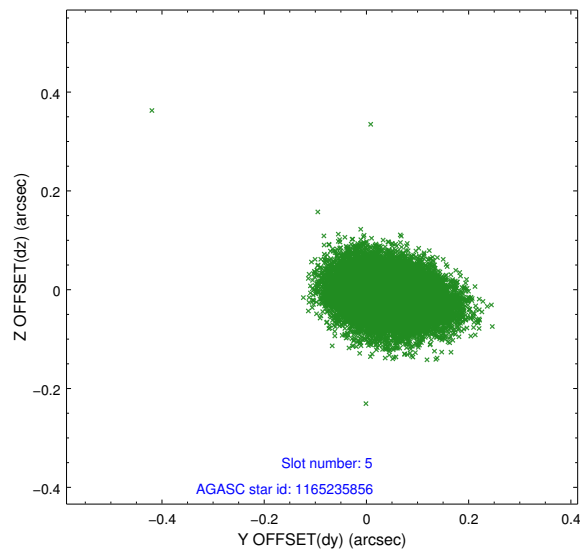
### 2.4.1 Slot 3



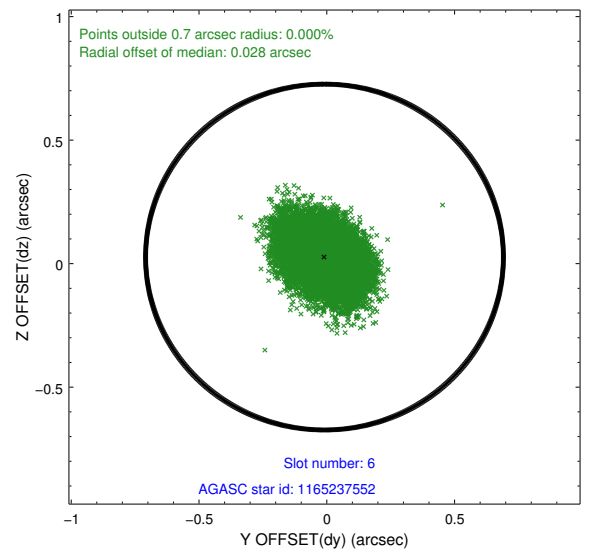
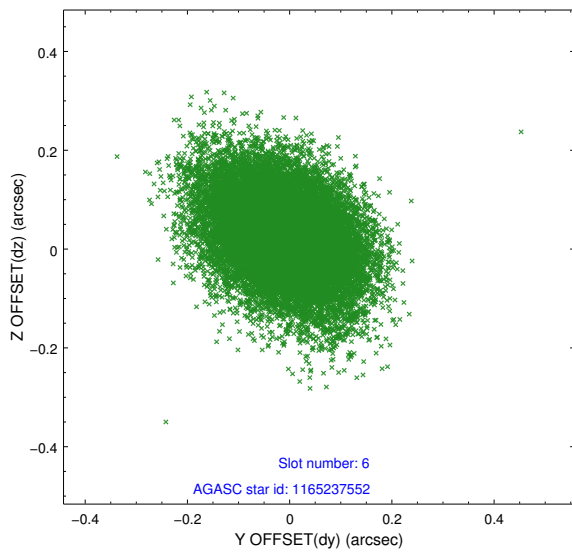
## 2.4.2 Slot 4



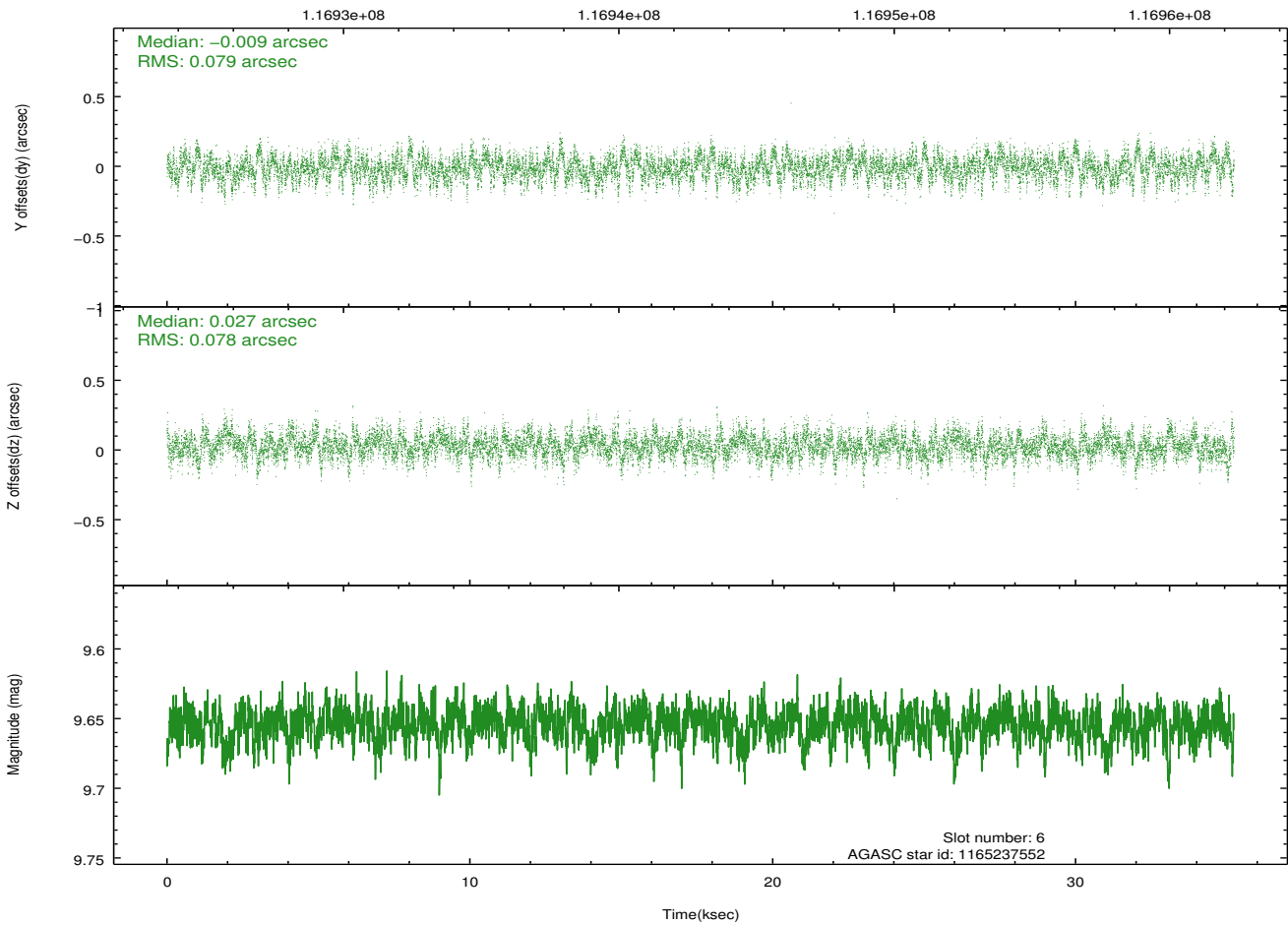
### 2.4.3 Slot 5



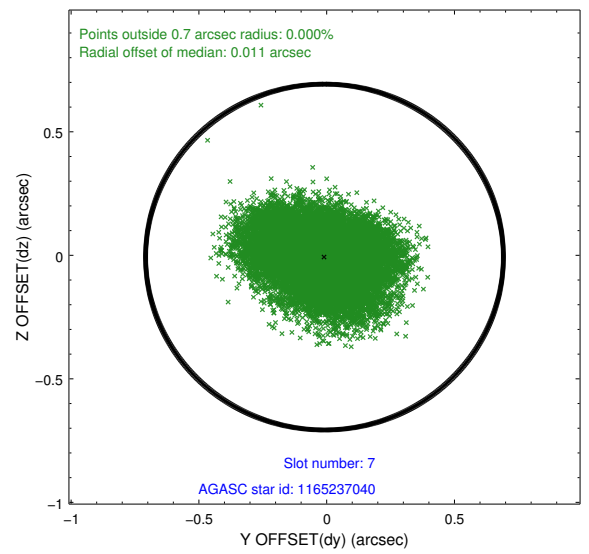
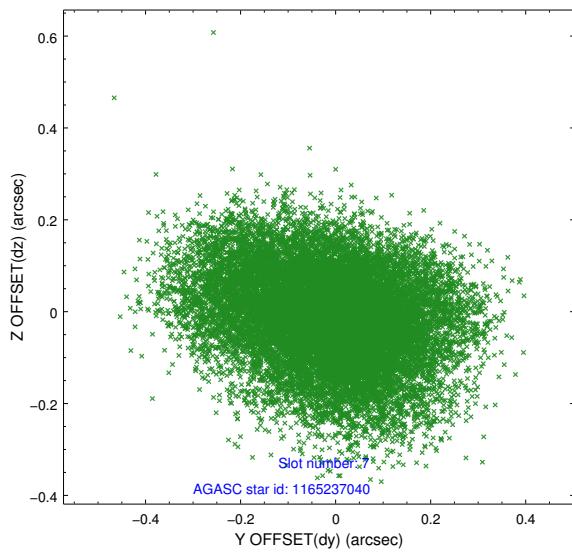
## 2.4.4 Slot 6



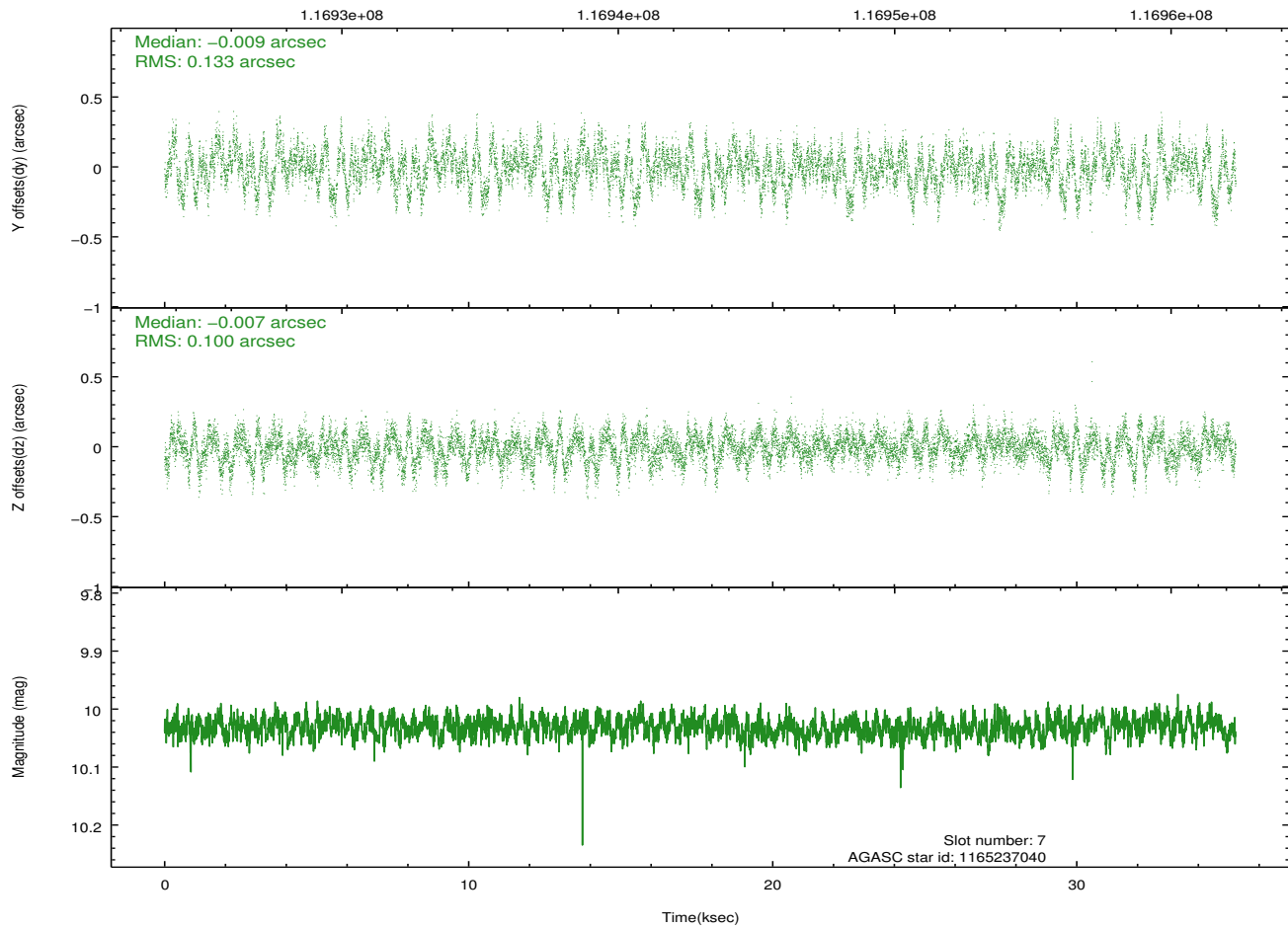
Time (s)



## 2.4.5 Slot 7

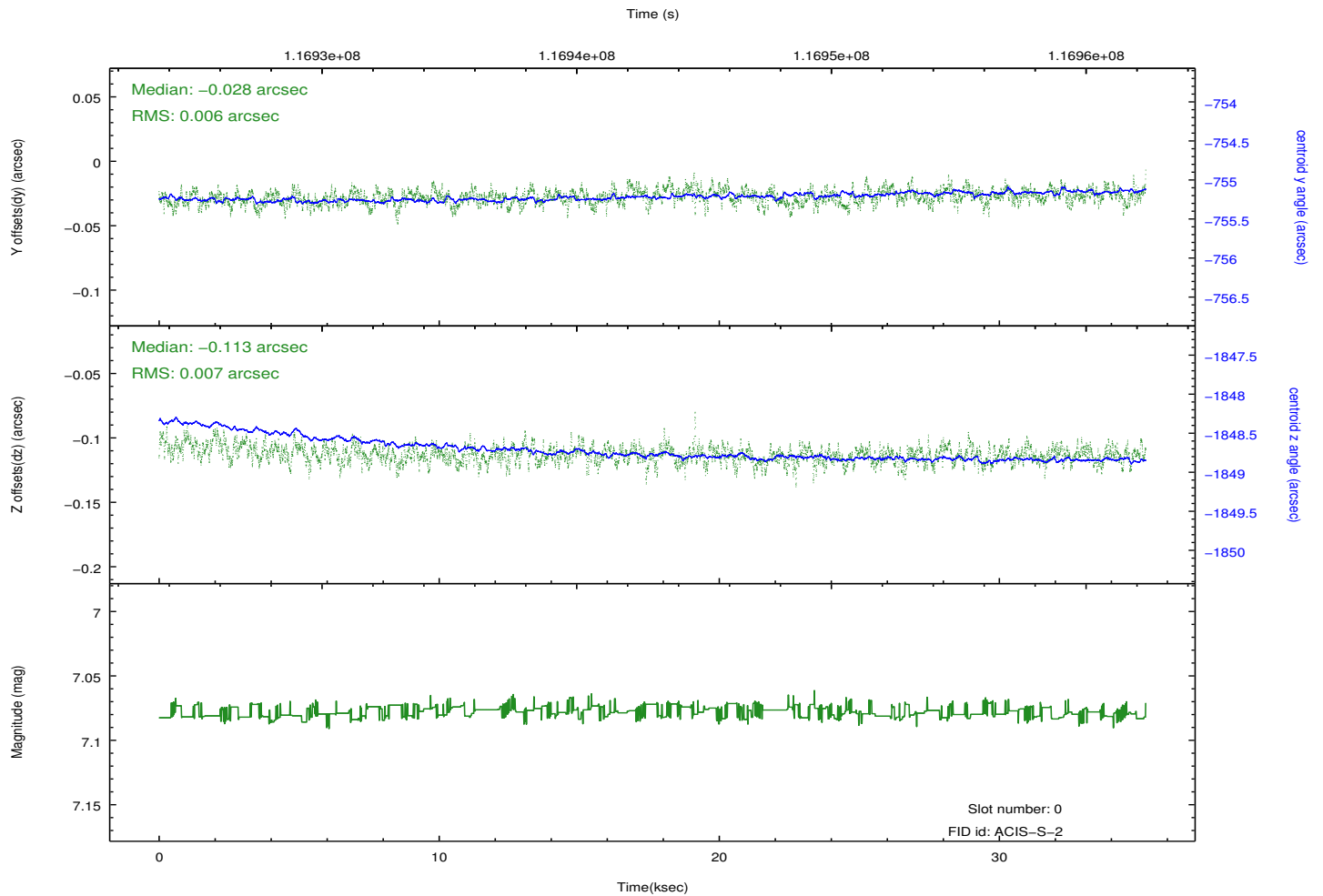
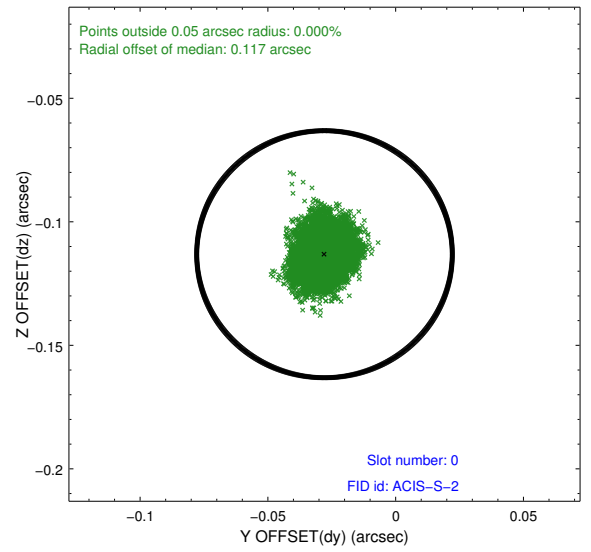
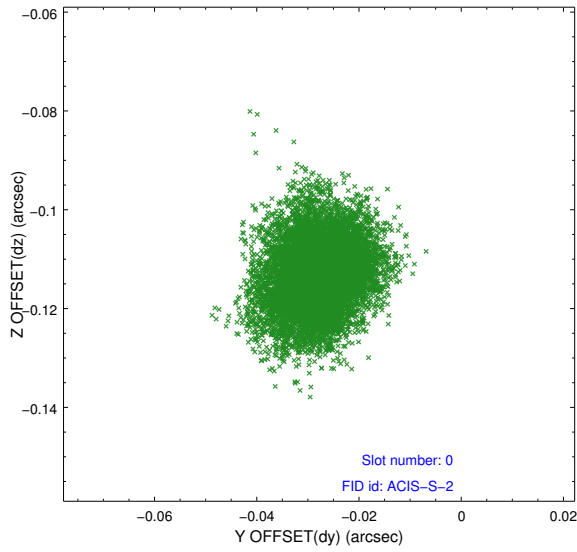


Time (s)

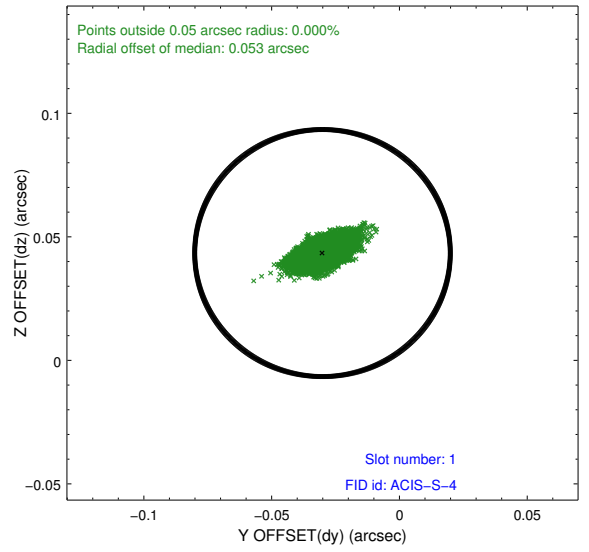
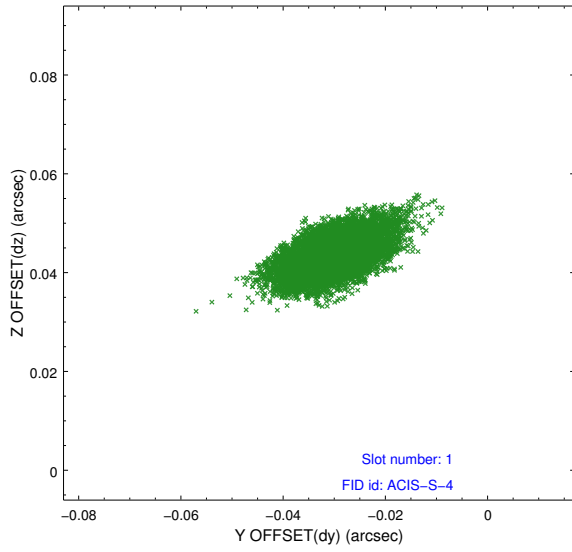


## 2.5 FID Slots

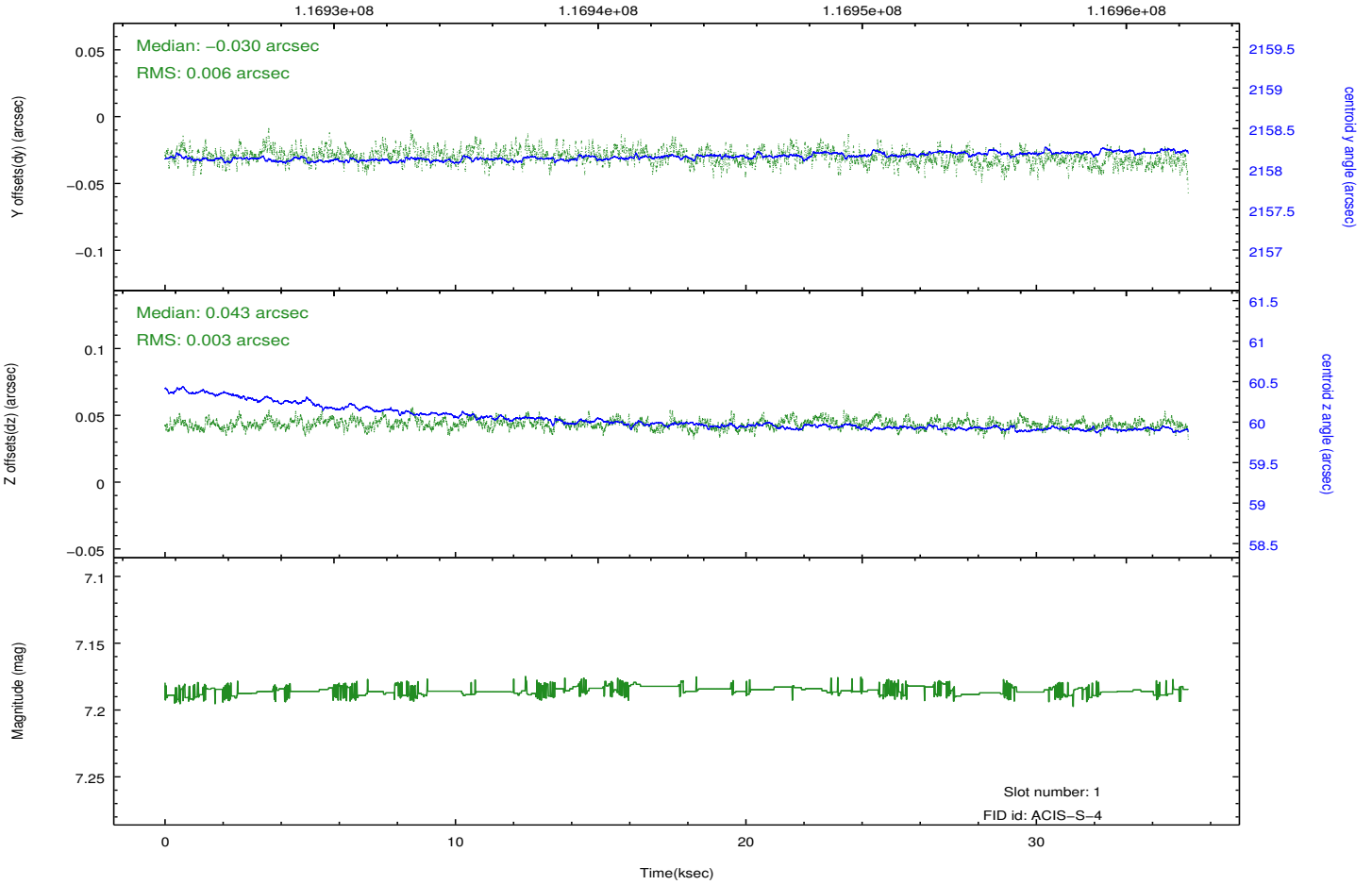
### 2.5.1 Slot 0



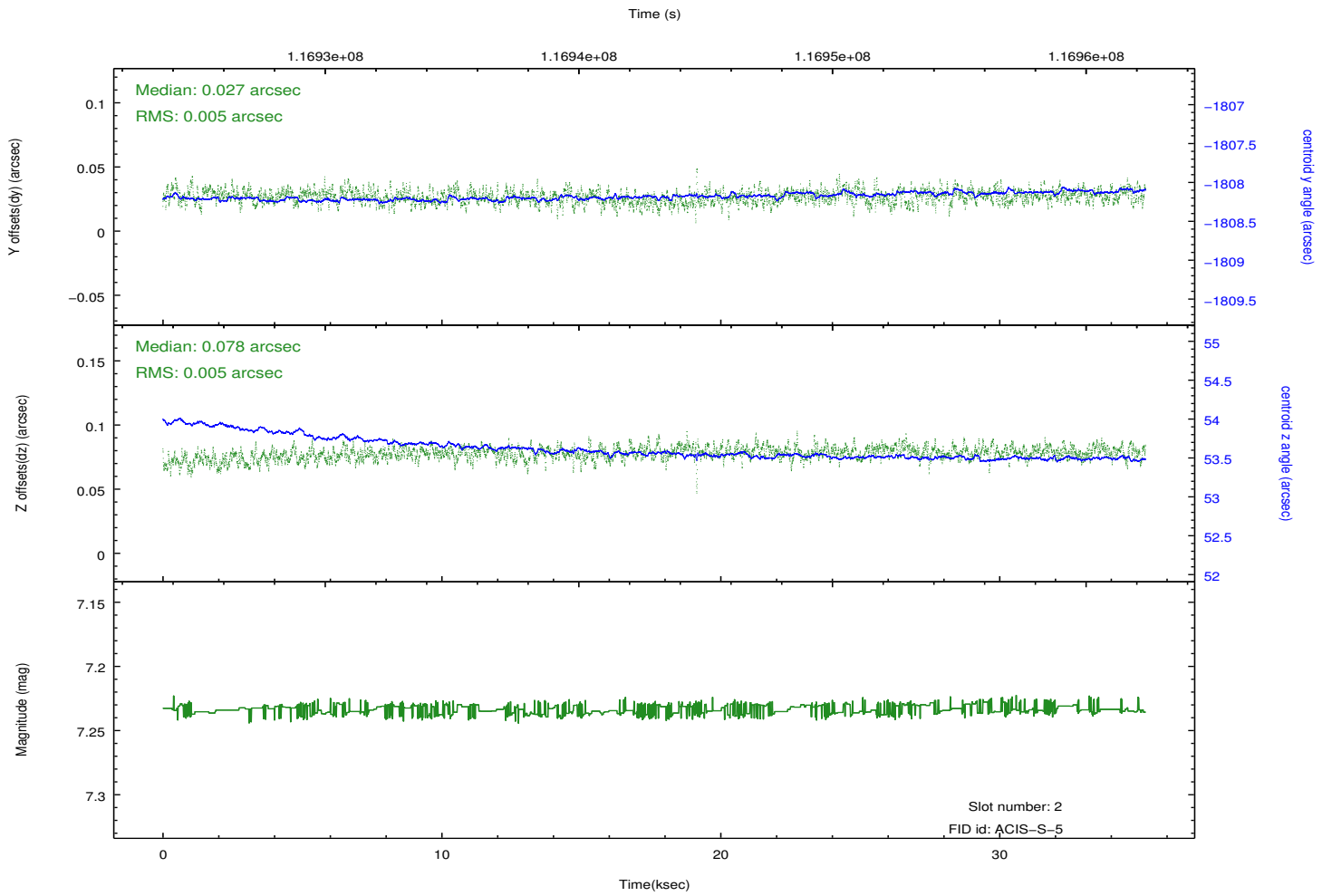
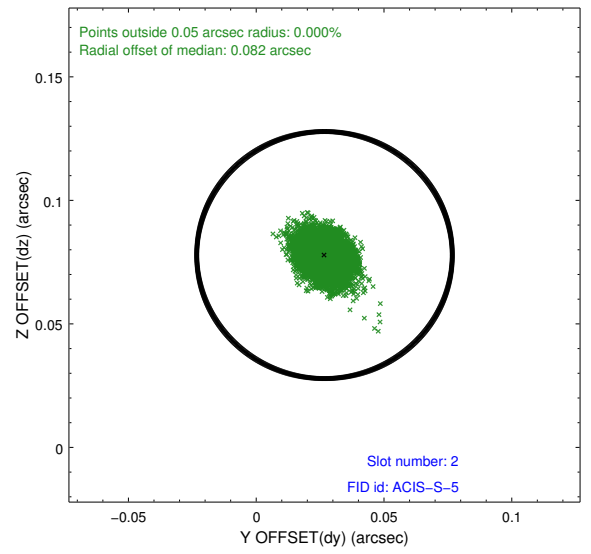
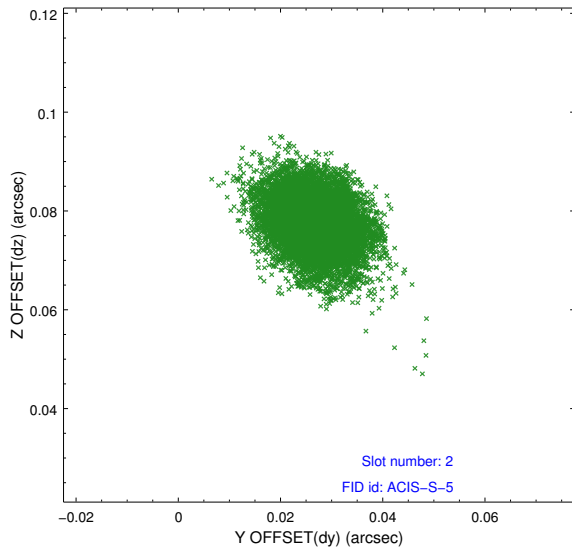
## 2.5.2 Slot 1



Time (s)



### 2.5.3 Slot 2



## A Summary

### A.1 Status

V&V Scientist	Jen Lauer
V&V Date (YYYY-MM-DD)	2012.09.27
V&V Edition	1
V&V Disposition and Status	OK
V&V Charge Time	34.3

### A.2 Comments