

V&V Reference Report

L2 ASCDS Version : 8.4.4

Observation 10441 - L2 Version 2
Chandra X-Ray Center

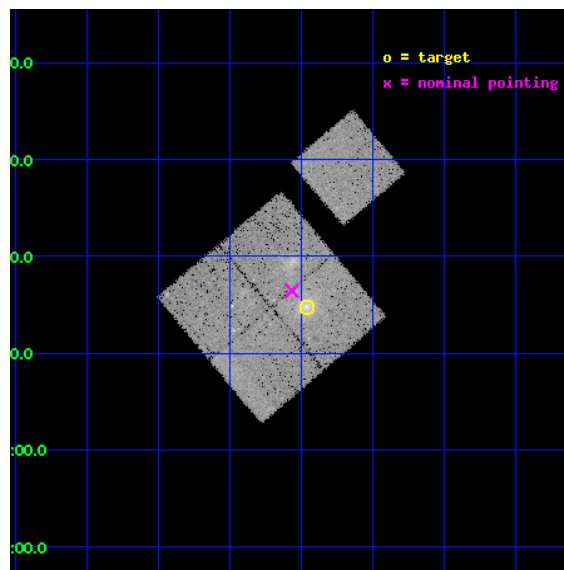
L2 Processing Date : May 28 2012

Contents

1	Front	2
2	OBI	3
2.1	OBI	3
2.1.1	Images	3
2.1.2	Bias	3
2.1.3	Parameters	4
2.1.4	Events	4
2.2	Compared Parameters	5
2.3	Aspect	6
2.4	Star Slots	9
2.4.1	Slot 3	9
2.4.2	Slot 4	10
2.4.3	Slot 5	11
2.4.4	Slot 6	12
2.4.5	Slot 7	13
2.5	FID Slots	14
2.5.1	Slot 0	14
2.5.2	Slot 1	15
2.5.3	Slot 2	16
A	Summary	17
A.1	Status	17
A.2	Comments	17

1 Front

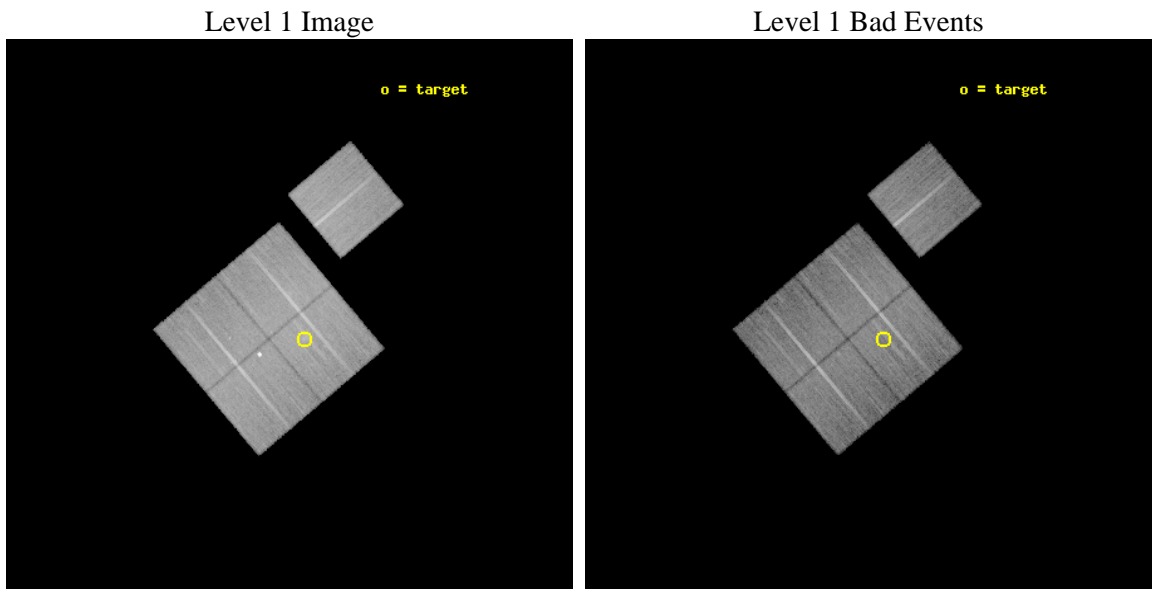
seq_num	800802	Sequence number
obs_id	10441	Observation id
title	LoCuSS: An Unbiased Multi-wavelength Study of the Cluster Quadchotomy - Gas Cooling and Cluster Merging at z=0.2	Proposal title
observer	Dr Graham Smith	Principal investigator
object	ZwCl 0823.2+0425	Source name
dtcycle	0	
cycle	P	events from which exps? Prim/Second/Both
ra_targ	126.490833	Observer's specified target RA [deg]
dec_targ	4.246528	Observer's specified target Dec [deg]
ra_nom	126.51666652834	Nominal RA [deg]
dec_nom	4.2741488824192	Nominal Dec [deg]
roll_nom	49.846628275981	Nominal Roll [deg]
revision	2	Processing version of data
ontime	21703.059146702	Sum of GTIs [s]
livetime	21419.492701391	Livetime [s]
ontime0	21703.059146702	Sum of GTIs [s]
ontime1	21706.200166941	Sum of GTIs [s]
ontime2	21706.200166941	Sum of GTIs [s]
ontime3	21703.059146702	Sum of GTIs [s]
ontime6	21706.200166941	Sum of GTIs [s]
l2events	85685	Number of level 2 events



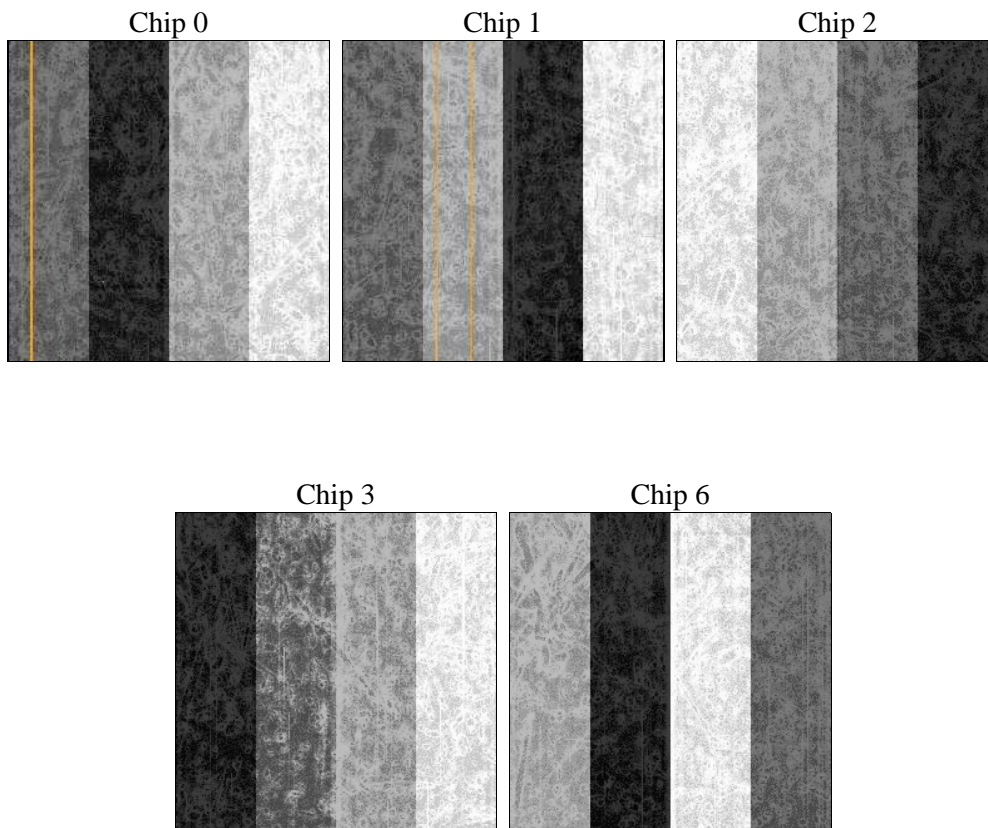
2 OBI

2.1 OBI

2.1.1 Images



2.1.2 Bias



2.1.3 Parameters

obi_num	0	Obi number	sched_exp_time	21530.000000	[s] Scheduled observation exposure time
ascdsver	8.4.4	Processing system revision	ontime	21703.059146702	Sum of GTIs [s]
caldbver	4.4.9	 	ontime0	21703.059146702	Sum of GTIs [s]
date	2012-05-28T12:16:28	Date and time of file creation	ontime1	21706.200166941	Sum of GTIs [s]
revision	2	Processing version of data	ontime2	21706.200166941	Sum of GTIs [s]
			ontime3	21703.059146702	Sum of GTIs [s]
			ontime6	21706.200166941	Sum of GTIs [s]
			l1events	919278	Number of level 1 events

2.1.4 Events

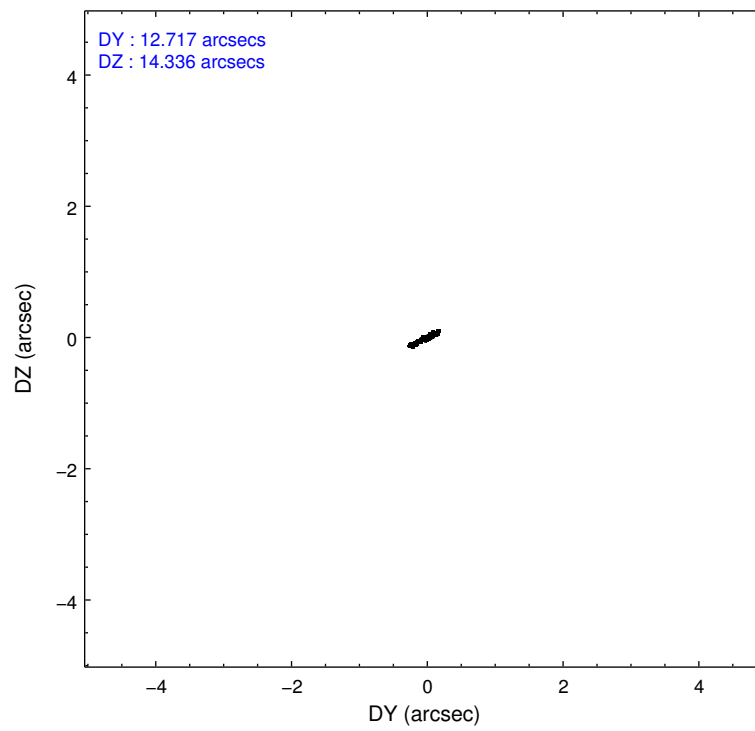
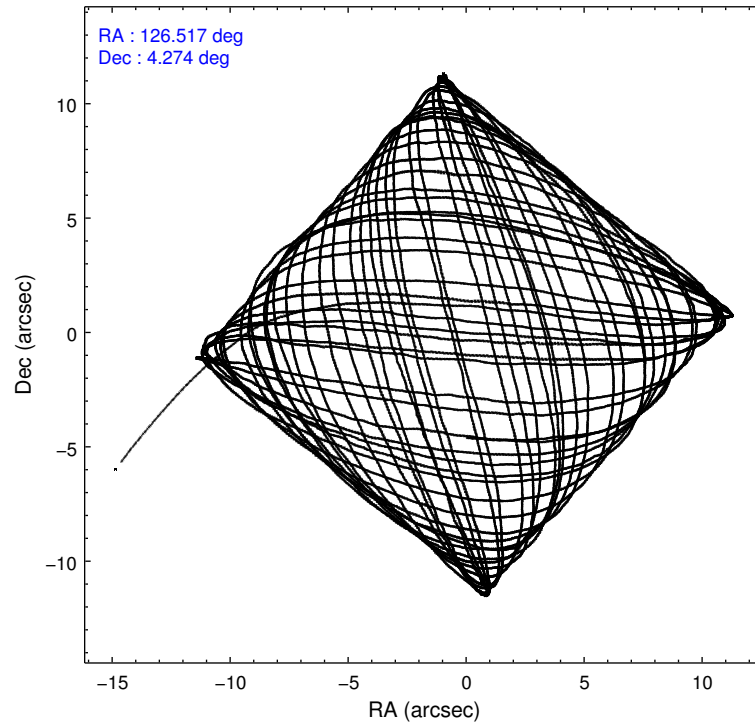
	ccd 0	ccd 1	ccd 2	ccd 3	ccd 6
level 1 events	168984	179992	193599	190195	186508
rejected events	150023	152723	173183	167586	167556
rejected %	88%	84%	89%	88%	89%

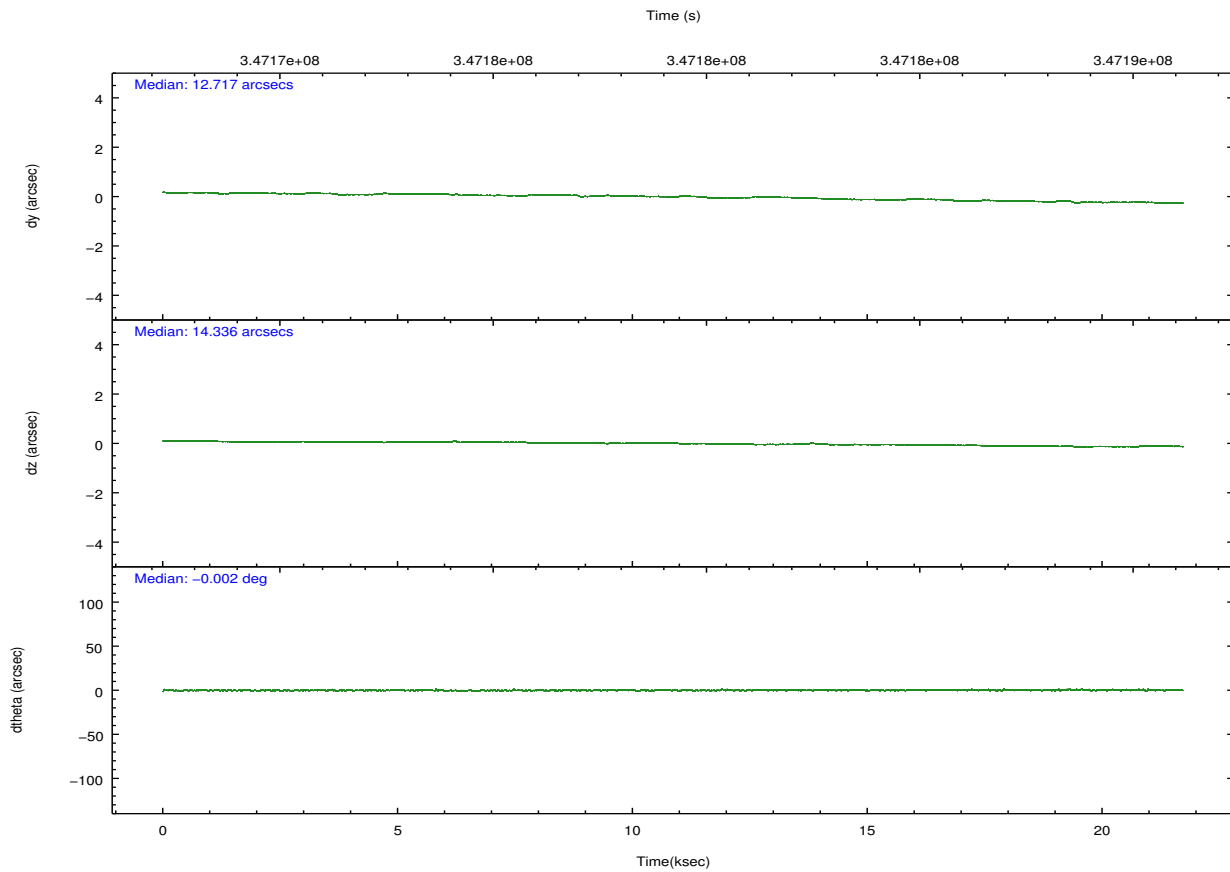
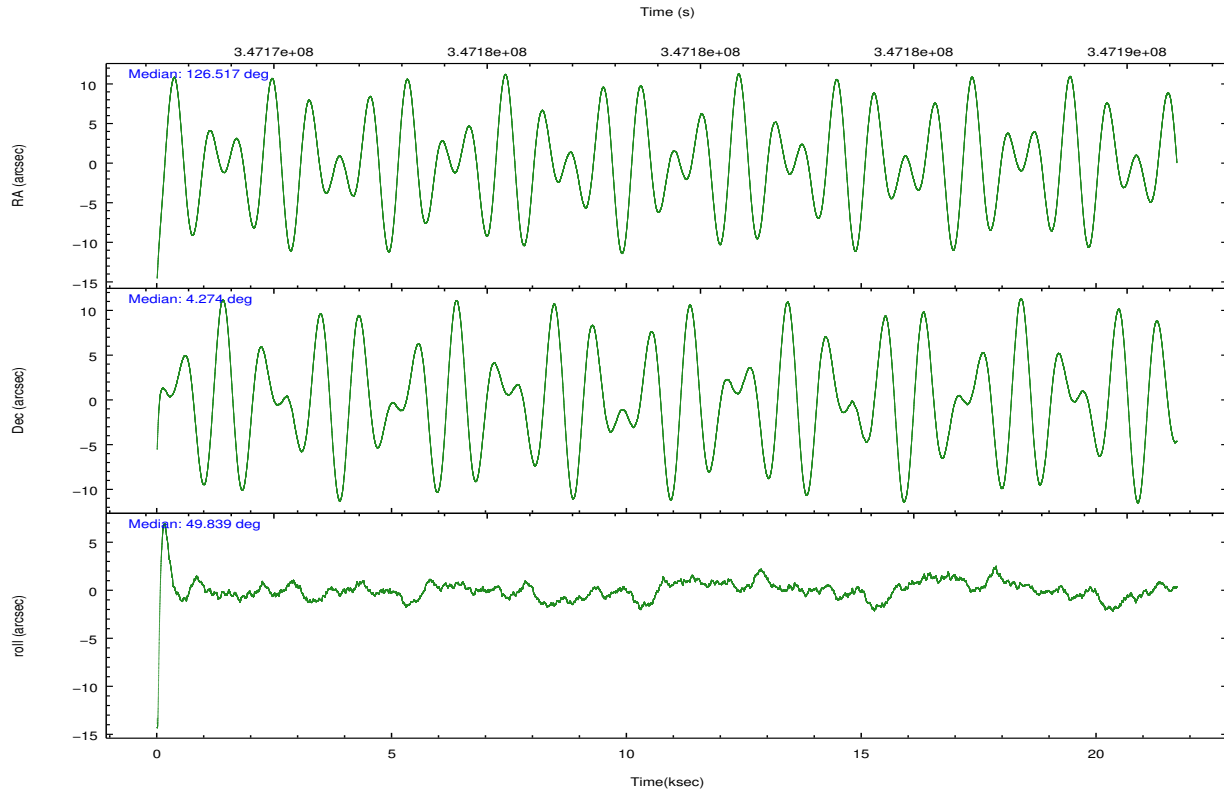
	ccd 0	ccd 1	ccd 2	ccd 3	ccd 6
grade 0 events	7133	14236	8401	10642	6835
	4%	7%	4%	5%	3%
grade 1 events	90	150	107	149	76
	0%	0%	0%	0%	0%
grade 2 events	4549	5020	4727	4439	4353
	2%	2%	2%	2%	2%
grade 3 events	2128	2217	2080	2142	2060
	1%	1%	1%	1%	1%
grade 4 events	1935	2211	2087	2120	2123
	1%	1%	1%	1%	1%
grade 5 events	6794	7474	6203	7898	7435
	4%	4%	3%	4%	3%
grade 6 events	3688	4250	3561	3751	4076
	2%	2%	1%	1%	2%
grade 7 events	142667	144434	166433	159054	159550
	84%	80%	85%	83%	85%

2.2 Compared Parameters

Parameter	Planned	Actual	Parameter	Planned	Actual
Instrument	ACIS	ACIS	Obspar format version number	7	7
Detector	ACIS-01236	ACIS-01236	Obspar file type	PREDICTED	ACTUAL
Grating	NONE	NONE	Obspar update status	NONE	UPDATED
Data mode	VFAINT	VFAINT	Number of optional ACIS chips dropped	0	0
Observation mode	POINTING	POINTING	On-chip summing requested	N	N
[deg] Pointing RA	126.511890	126.5166665283364	Subarray requested	NONE	NONE
[deg] Pointing Dec	4.247053	4.274148882419198	Alternating exposures requested	N	N
[deg] Pointing Roll	49.638308	49.84662827598073	[s] Primary exposure time	0.000000	3.1
[mm] SIM focus pos	-0.782348	-0.7809083437167272			
[mm] SIM defocus	0	0.001439871863259334			
[mm] SIM translation stage pos	-227.592463	-227.5933067819097			
[mm] SIM translation stage offset	-6	-5.999146221020027			
[s] Observation start time (MET)	347168546.184000	347167279.57328			
Observation start date	2009-01-01T03:41:20	2009-01-01T03:21:19			
[s] Observation end time (MET)	347190076.184000	347190911.46195			
Observation end date	2009-01-01T09:40:10	2009-01-01T09:55:11			
Read mode	TIMED	TIMED			

2.3 Aspect



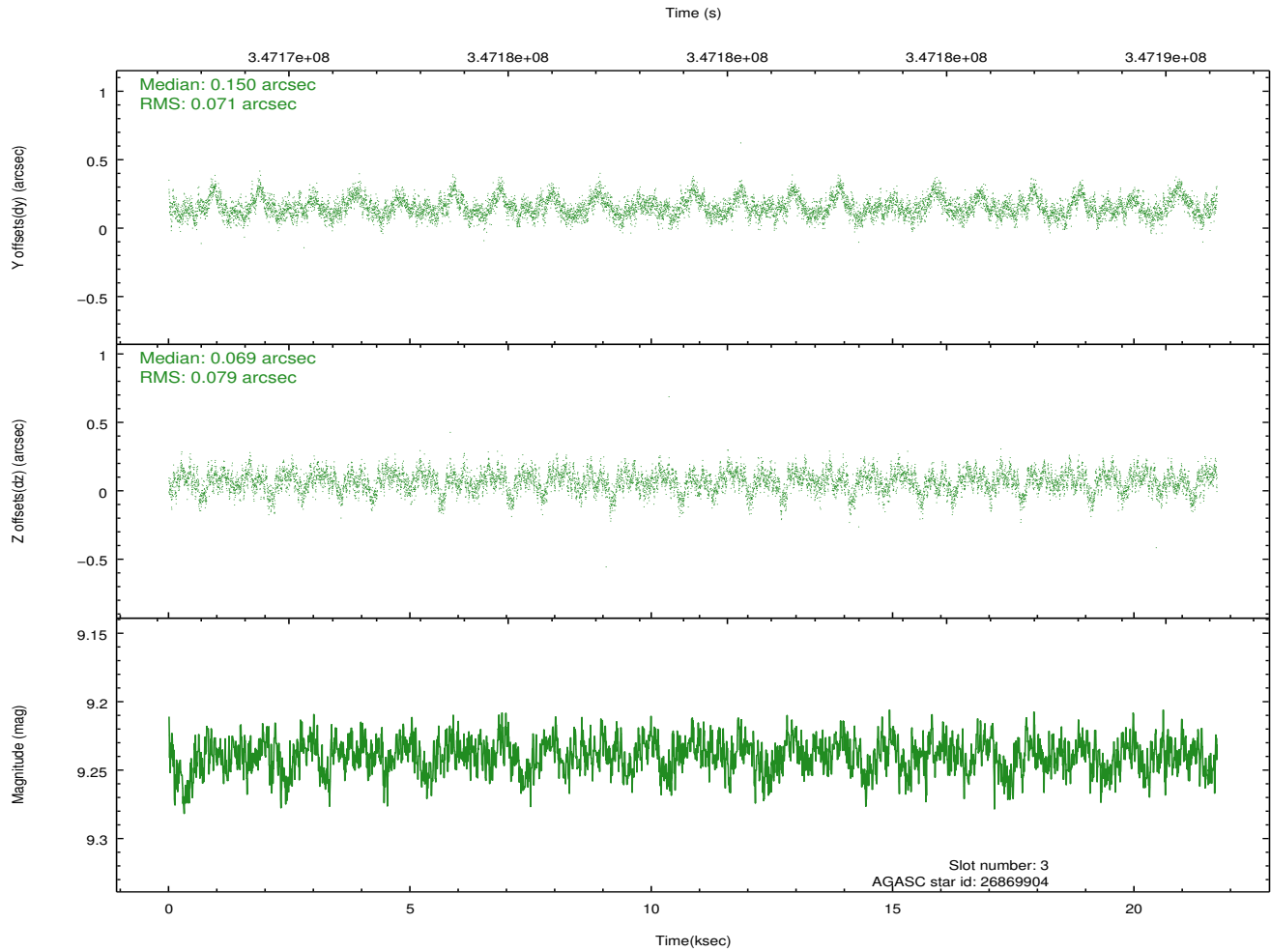
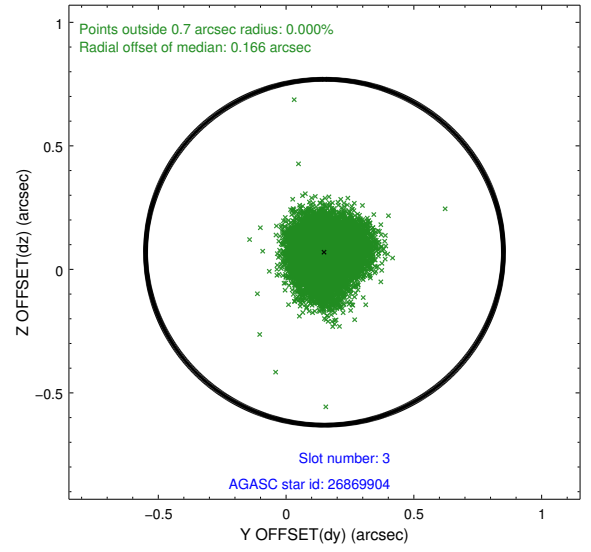
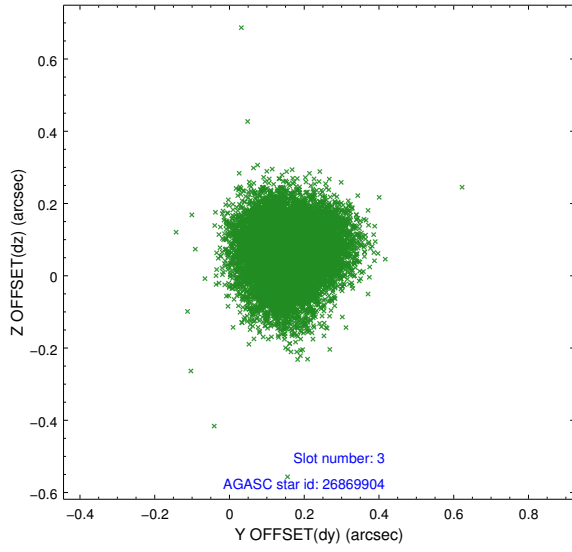


Slot Statistics

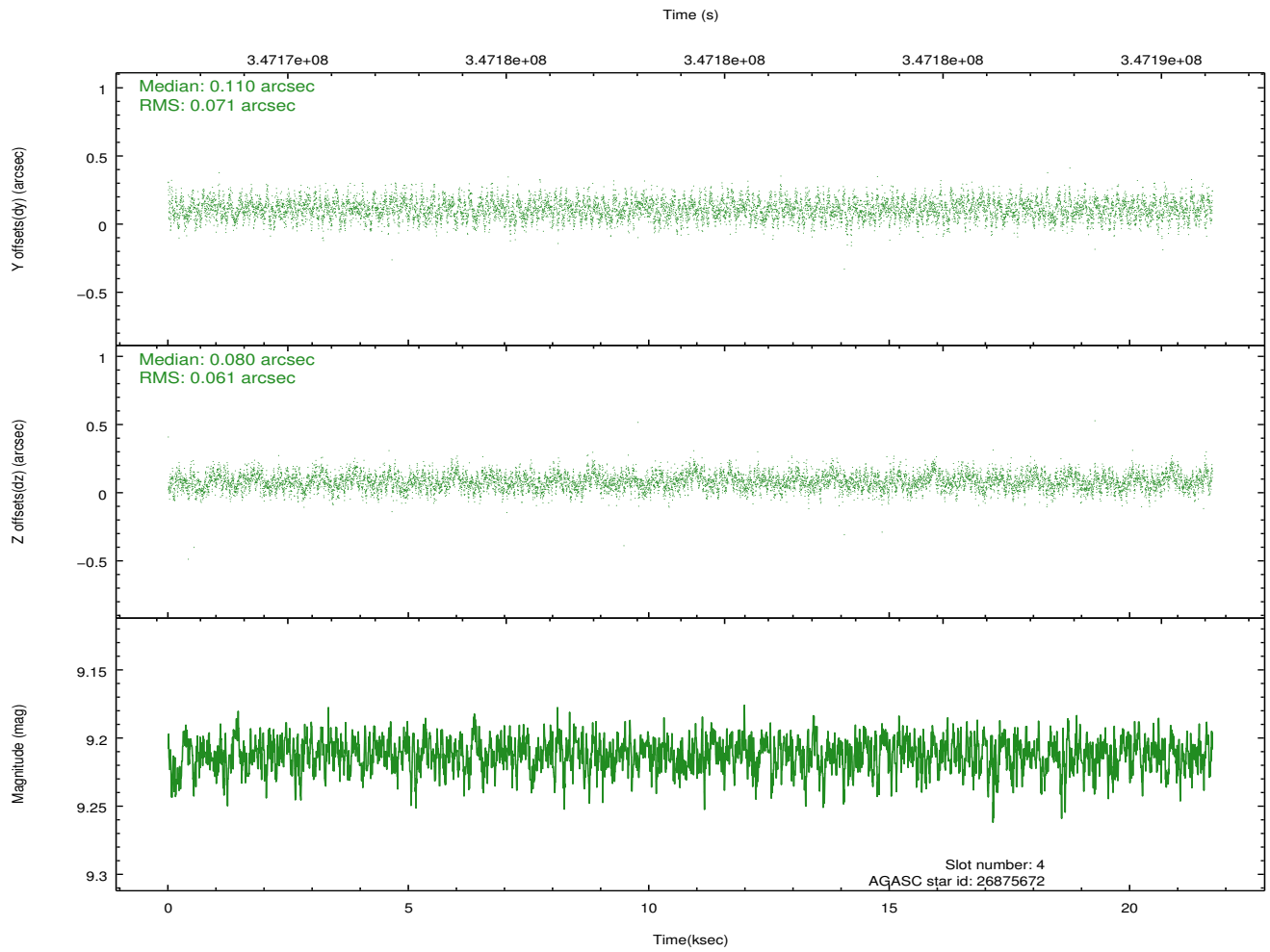
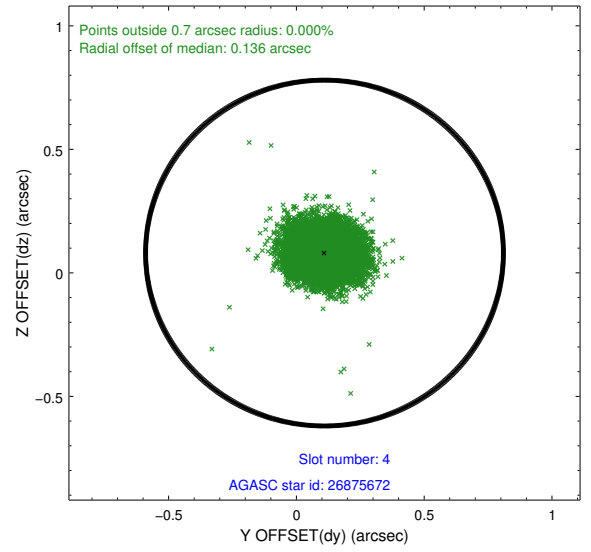
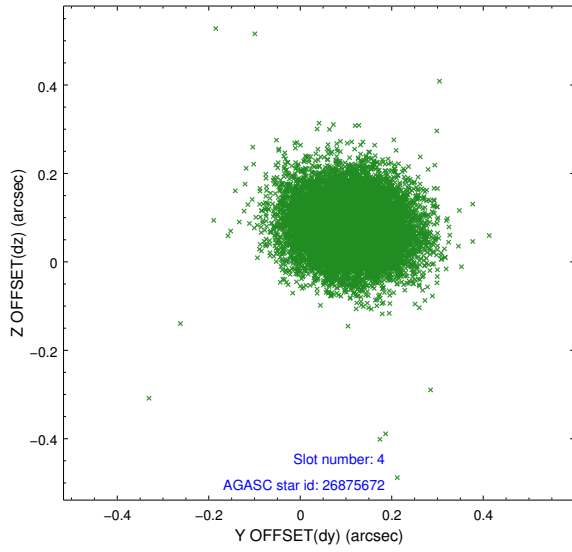
slot	status	id	mag	n_pts	med_dy	med_dz	dr1	dr2	ra	dec	mean_y	mean_z
0	FID	ACIS-I-1	7.07	5295	0.104	-0.054	0.006	0.011	0.000000	0.000000	926.83	-961.08
1	FID	ACIS-I-5	7.07	5296	-0.255	0.095	0.008	0.013	0.000000	0.000000	-1821.56	936.43
2	FID	ACIS-I-6	7.08	5295	0.060	0.029	0.009	0.015	0.000000	0.000000	392.13	1581.07
3	GUIDE	26869904	9.24	10581	0.150	0.069	0.113	0.180	126.769814	3.979879	-132.36	-1328.52
4	GUIDE	26875672	9.21	10588	0.110	0.080	0.099	0.160	127.179834	4.530534	2331.05	-1164.32
5	GUIDE	26878176	7.67	10589	-0.256	-0.101	0.068	0.107	127.181759	4.324182	1770.08	-1651.78
6	GUIDE	26882512	8.95	10580	0.048	0.025	0.147	0.210	126.849477	4.684840	1985.92	98.04
7	GUIDE	26884136	6.51	10591	-0.047	-0.066	0.064	0.099	126.276906	4.497224	140.35	1225.71

2.4 Star Slots

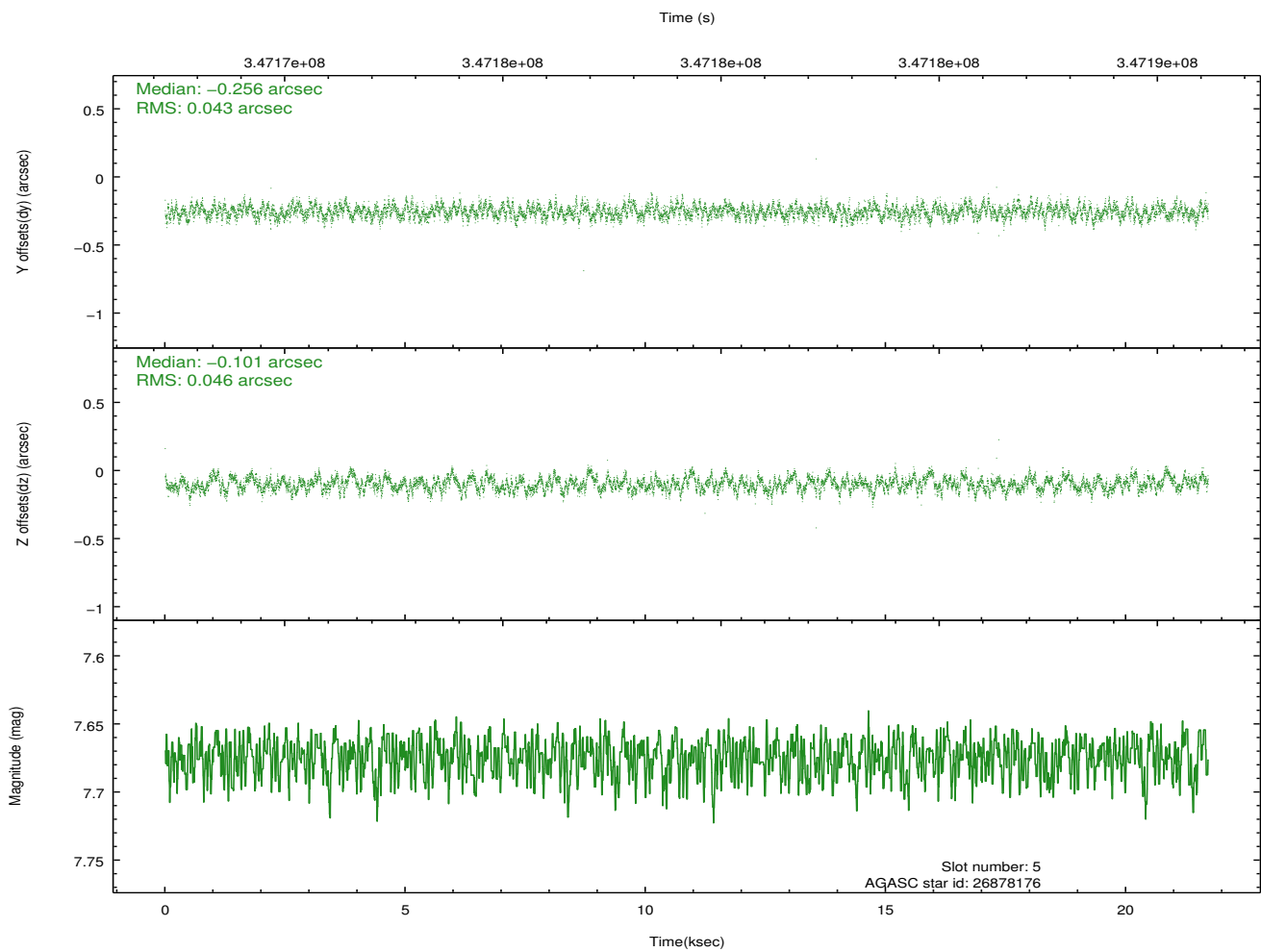
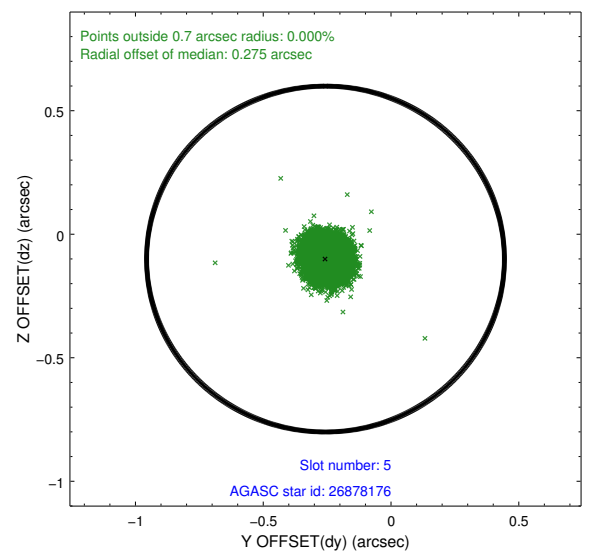
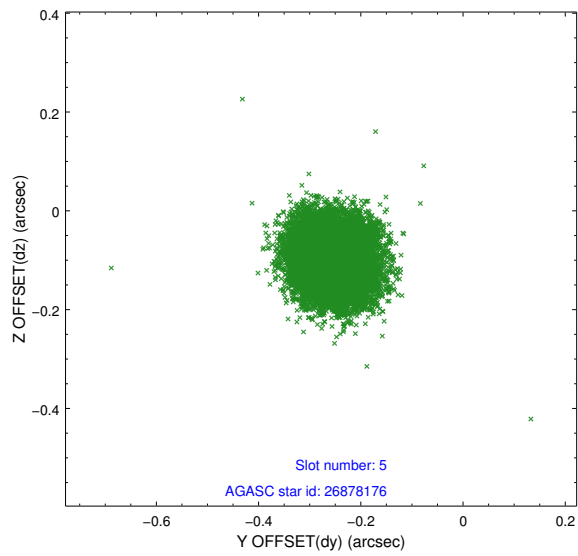
2.4.1 Slot 3



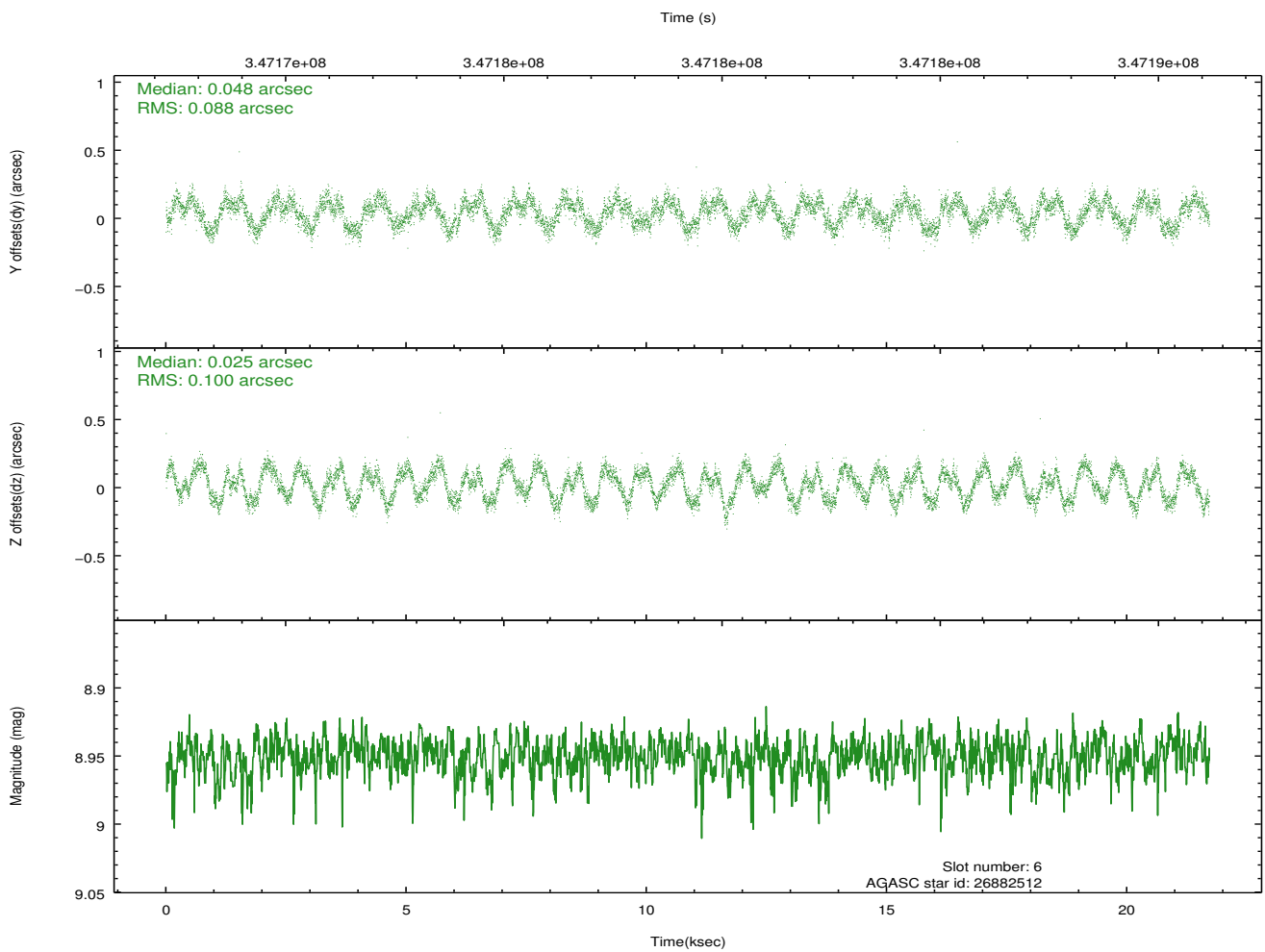
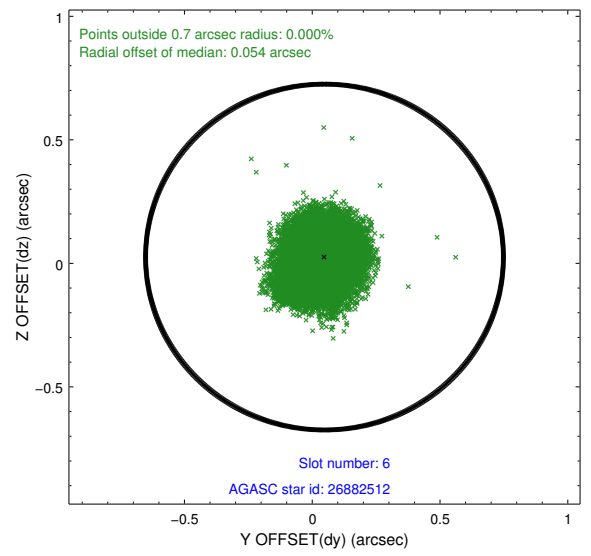
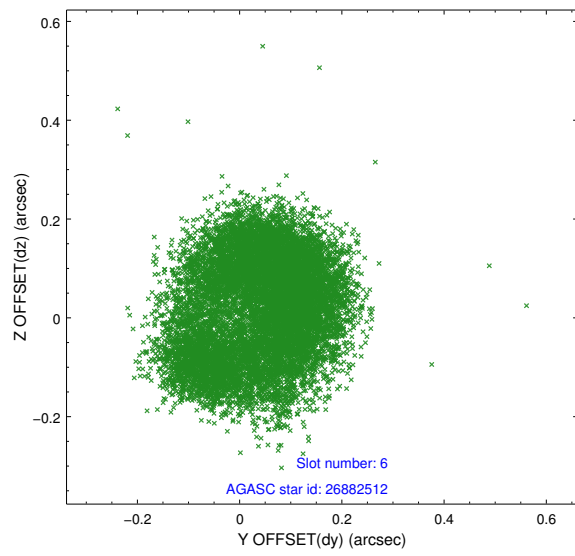
2.4.2 Slot 4



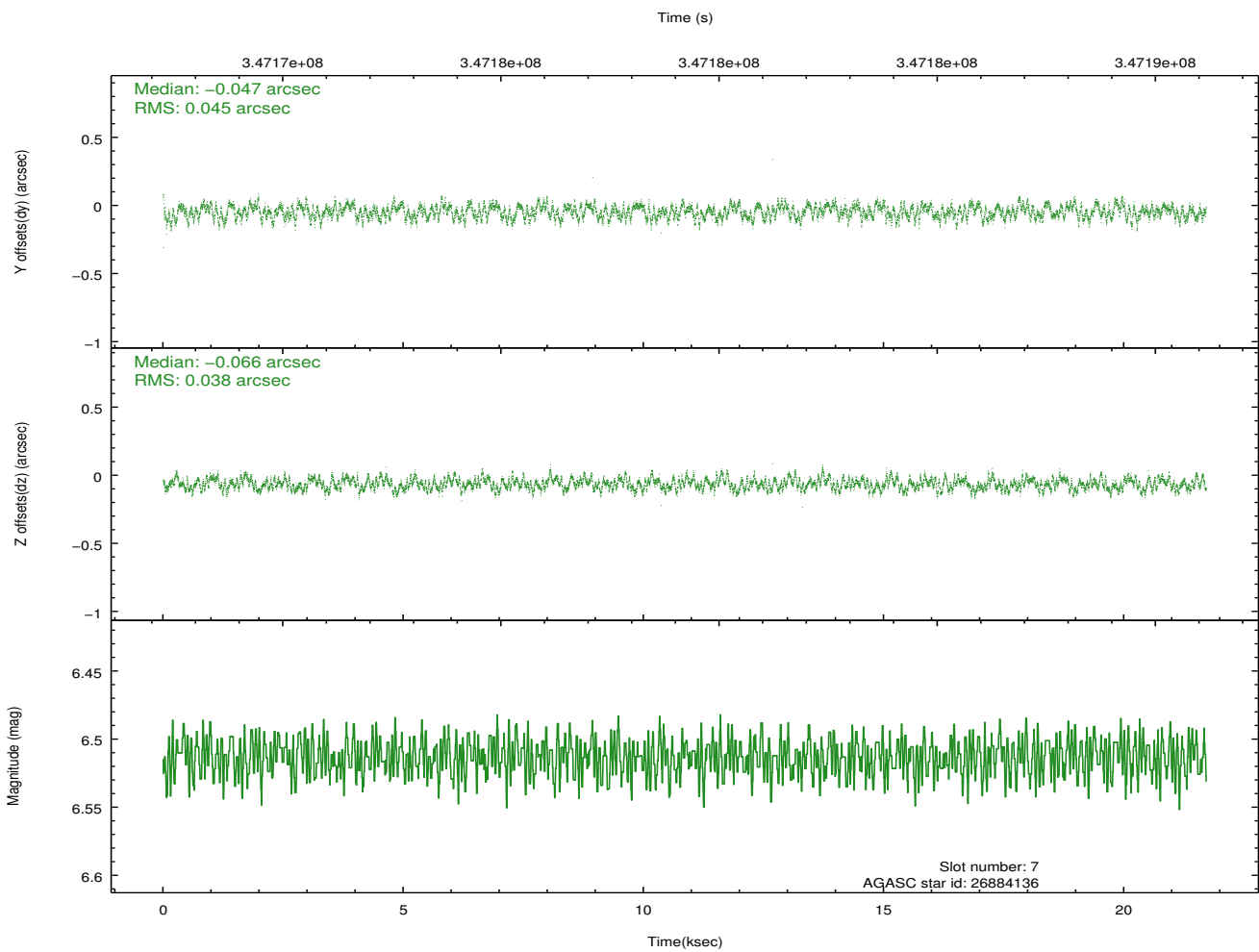
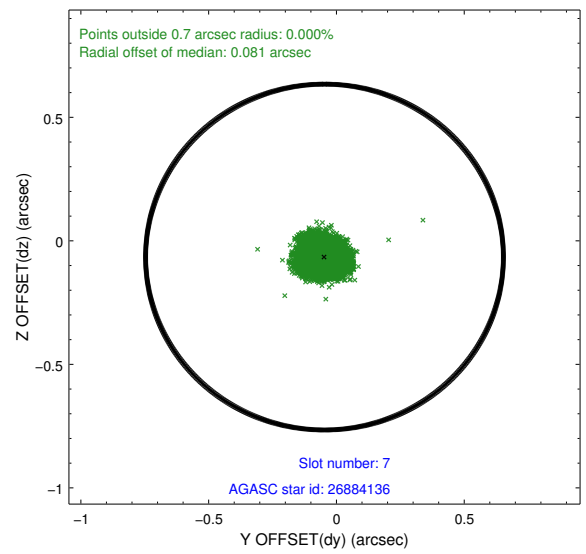
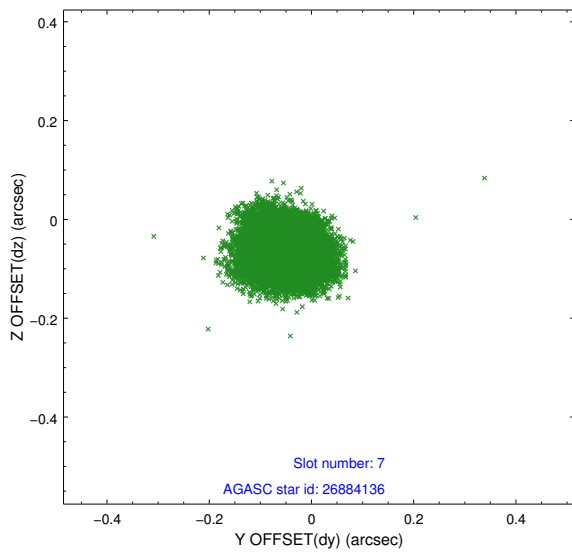
2.4.3 Slot 5



2.4.4 Slot 6

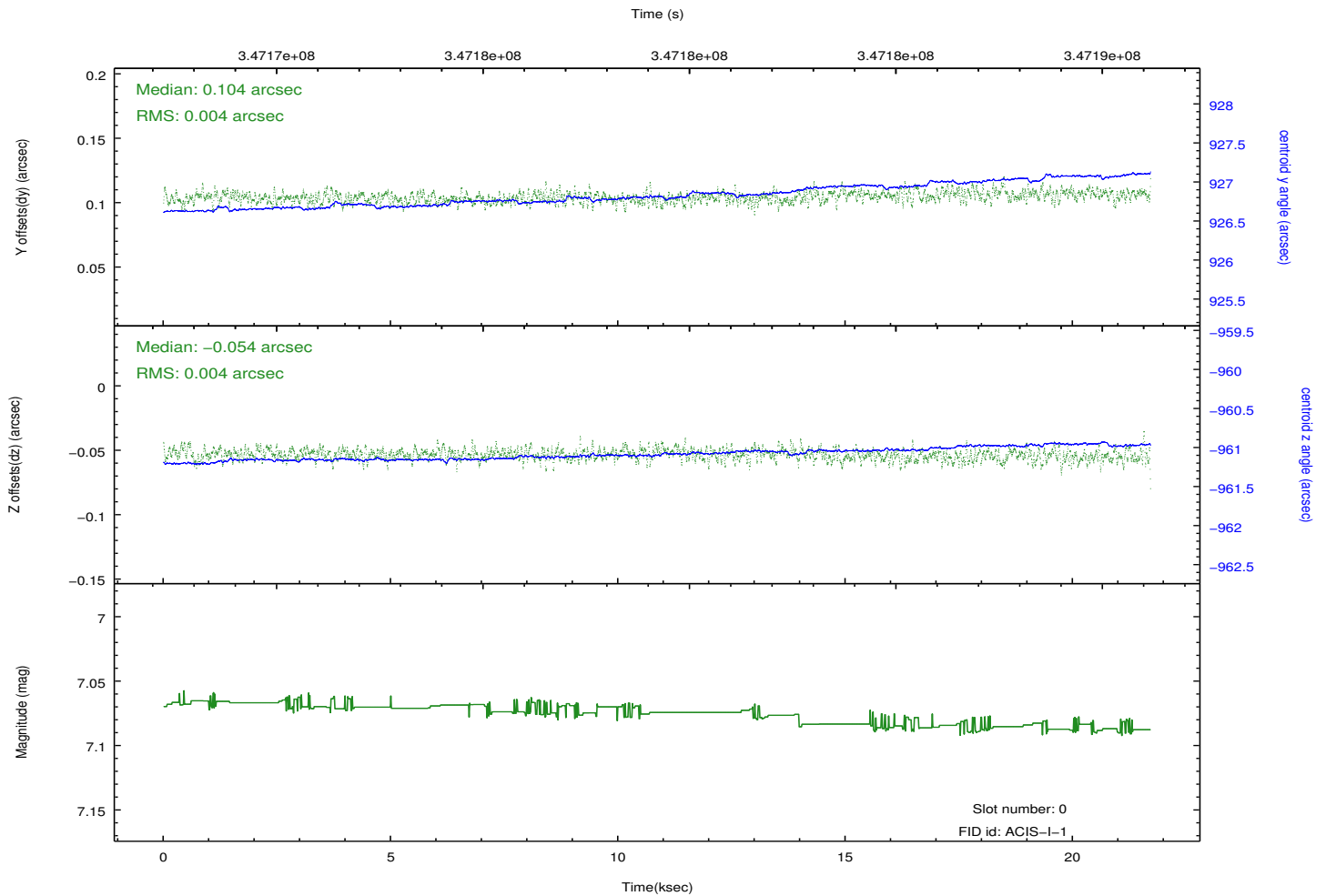
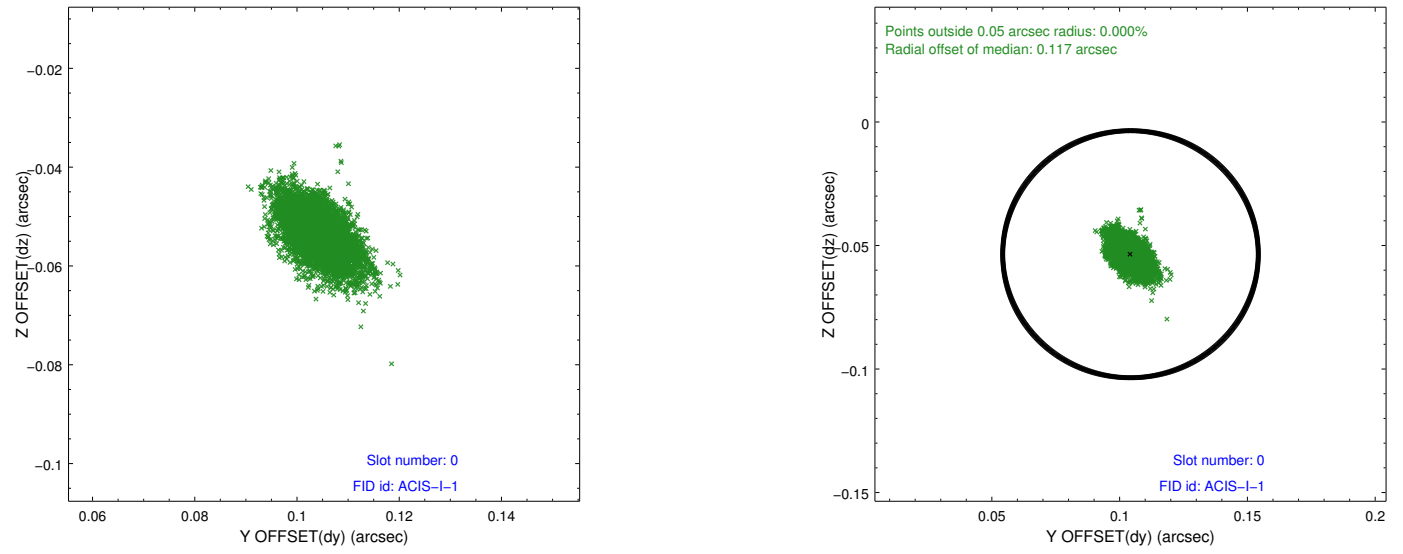


2.4.5 Slot 7

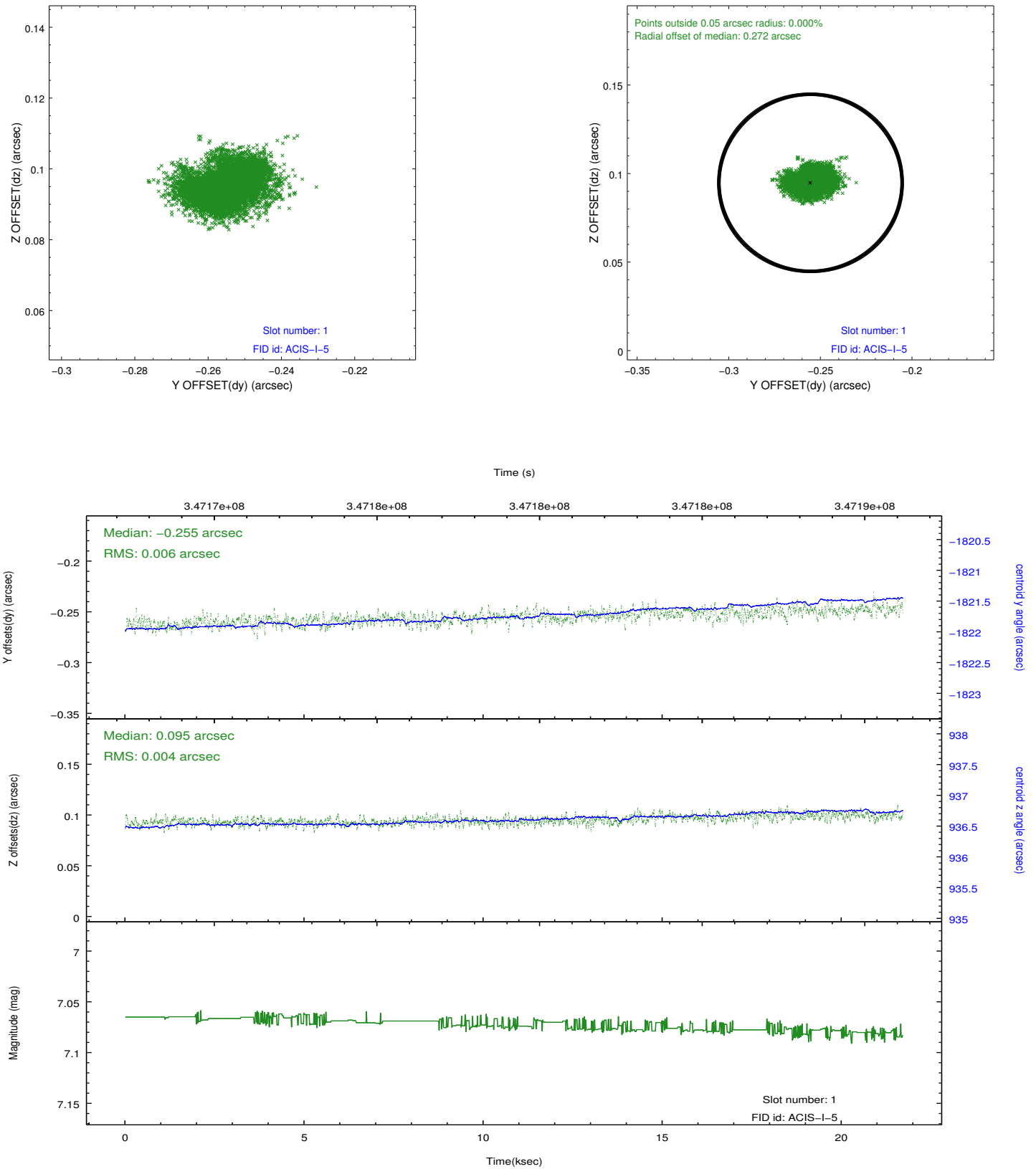


2.5 FID Slots

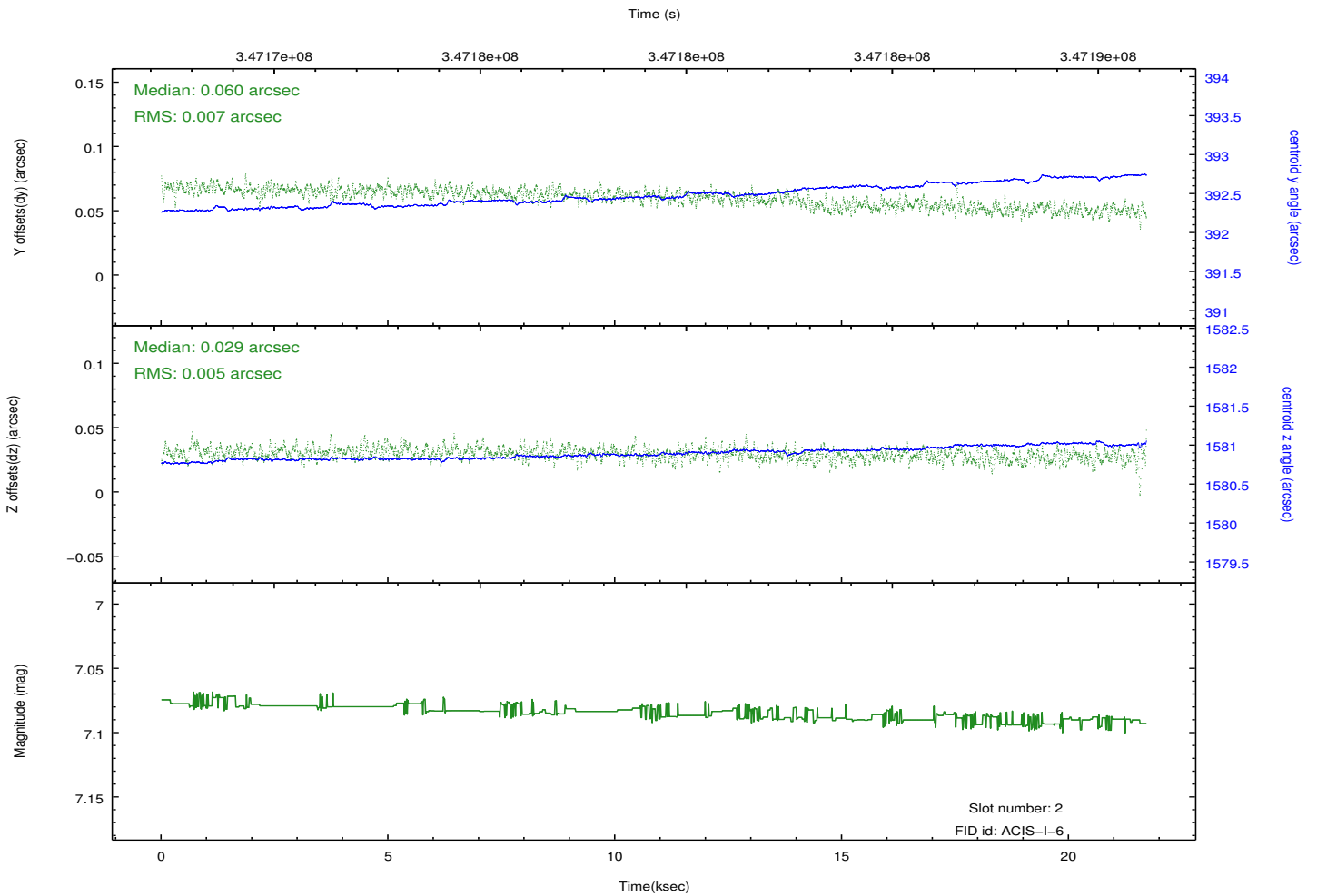
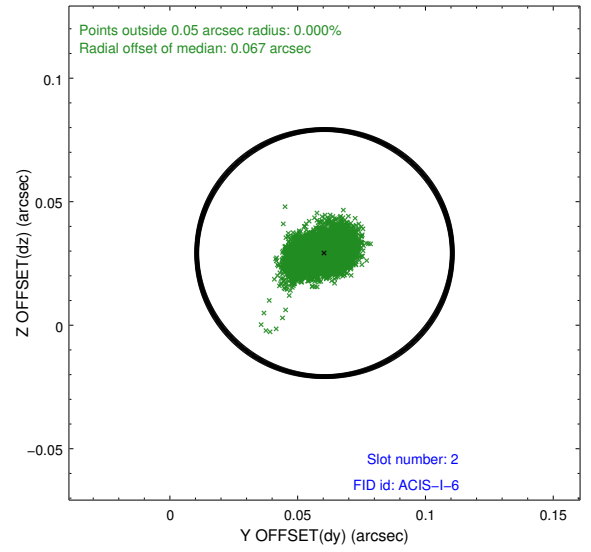
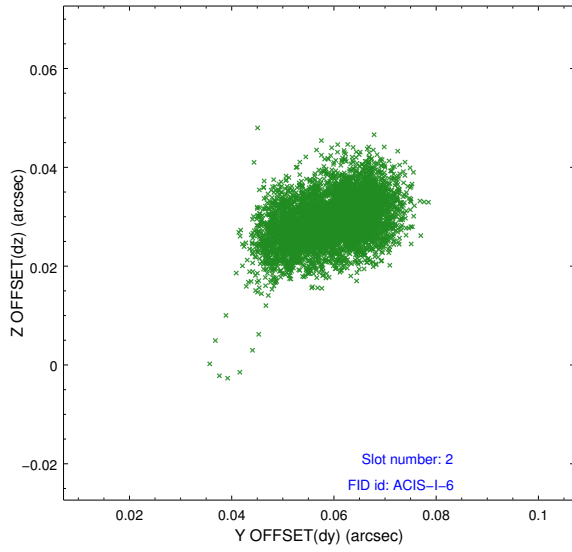
2.5.1 Slot 0



2.5.2 Slot 1



2.5.3 Slot 2



A Summary

A.1 Status

V&V Scientist	Jen Lauer
V&V Date (YYYY-MM-DD)	2012.06.04
V&V Edition	1
V&V Disposition and Status	OK
V&V Charge Time	21.7030591

A.2 Comments