

# V&V Reference Report

## L2 ASCDS Version : 8.4.4

Observation 10481 - L2 Version 2  
Chandra X-Ray Center

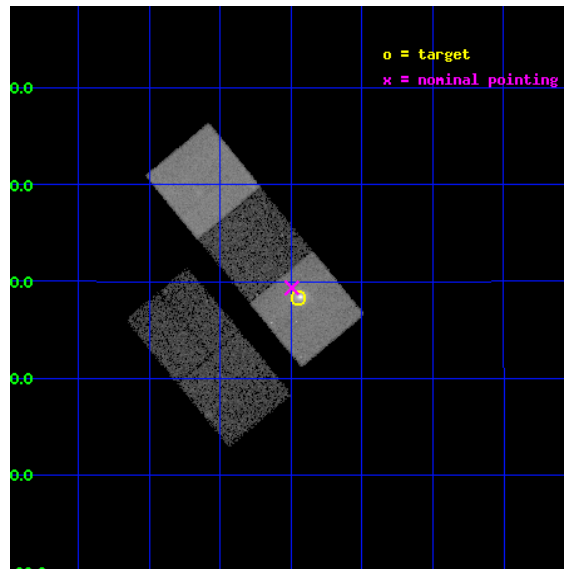
L2 Processing Date : May 26 2012

## Contents

<b>1</b>	<b>Front</b>	<b>2</b>
<b>2</b>	<b>OBI</b>	<b>3</b>
2.1	OBI . . . . .	3
2.1.1	Images . . . . .	3
2.1.2	Bias . . . . .	3
2.1.3	Parameters . . . . .	4
2.1.4	Events . . . . .	4
2.2	Compared Parameters . . . . .	5
2.3	Aspect . . . . .	6
2.4	Star Slots . . . . .	9
2.4.1	Slot 3 . . . . .	9
2.4.2	Slot 4 . . . . .	10
2.4.3	Slot 5 . . . . .	11
2.4.4	Slot 6 . . . . .	12
2.4.5	Slot 7 . . . . .	13
2.5	FID Slots . . . . .	14
2.5.1	Slot 0 . . . . .	14
2.5.2	Slot 1 . . . . .	15
2.5.3	Slot 2 . . . . .	16
<b>A</b>	<b>Summary</b>	<b>17</b>
A.1	Status . . . . .	17
A.2	Comments . . . . .	17

# 1 Front

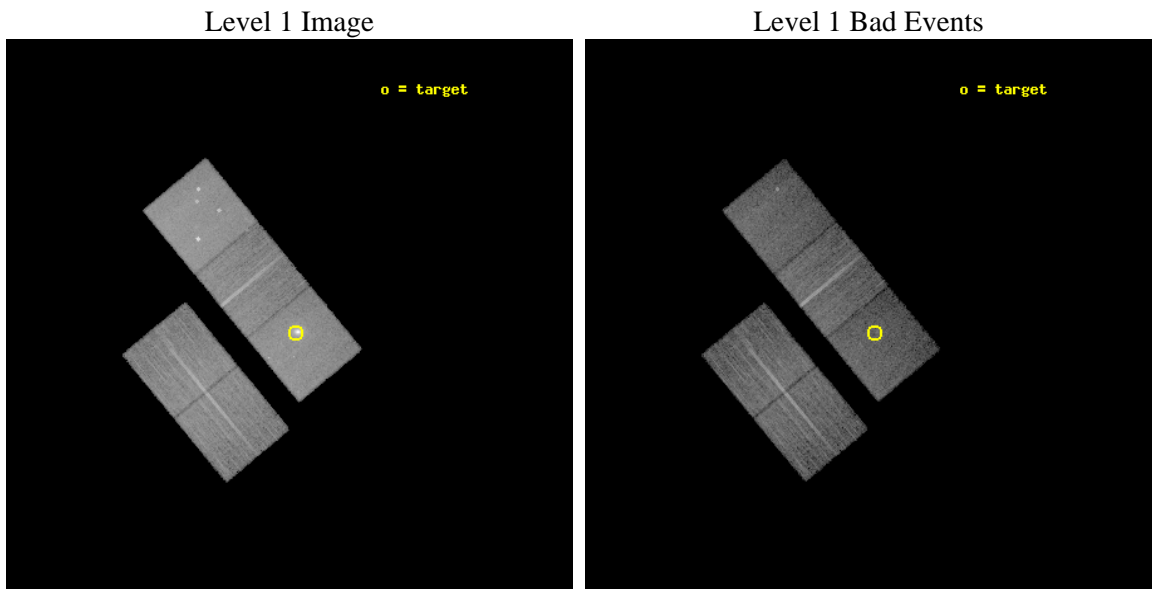
seq_num	800836	Sequence number
obs_id	10481	Observation id
title	Deciphering Cluster Observables: Tracing the Baryons in Clusters of Galaxies	Proposal title
observer	Dr. Amalia Hicks	Principal investigator
object	RCS1447+0828	Source name
dtcycle	0	&#160
cycle	P	events from which exps? Prim/Second/Both
ra_targ	221.862083	Observer's specified target RA [deg]
dec_targ	8.471528	Observer's specified target Dec [deg]
ra_nom	221.87354852558	Nominal RA [deg]
dec_nom	8.4891401609054	Nominal Dec [deg]
roll_nom	50.435279070864	Nominal Roll [deg]
revision	2	Processing version of data
ontime	12158.200093508	Sum of GTIs [s]
livetime	11999.344258549	Livetime [s]
ontime2	12158.200093508	Sum of GTIs [s]
ontime3	12155.059133172	Sum of GTIs [s]
ontime5	12158.200093508	Sum of GTIs [s]
ontime6	12158.200093508	Sum of GTIs [s]
ontime7	12158.200093508	Sum of GTIs [s]
l2events	164383	Number of level 2 events



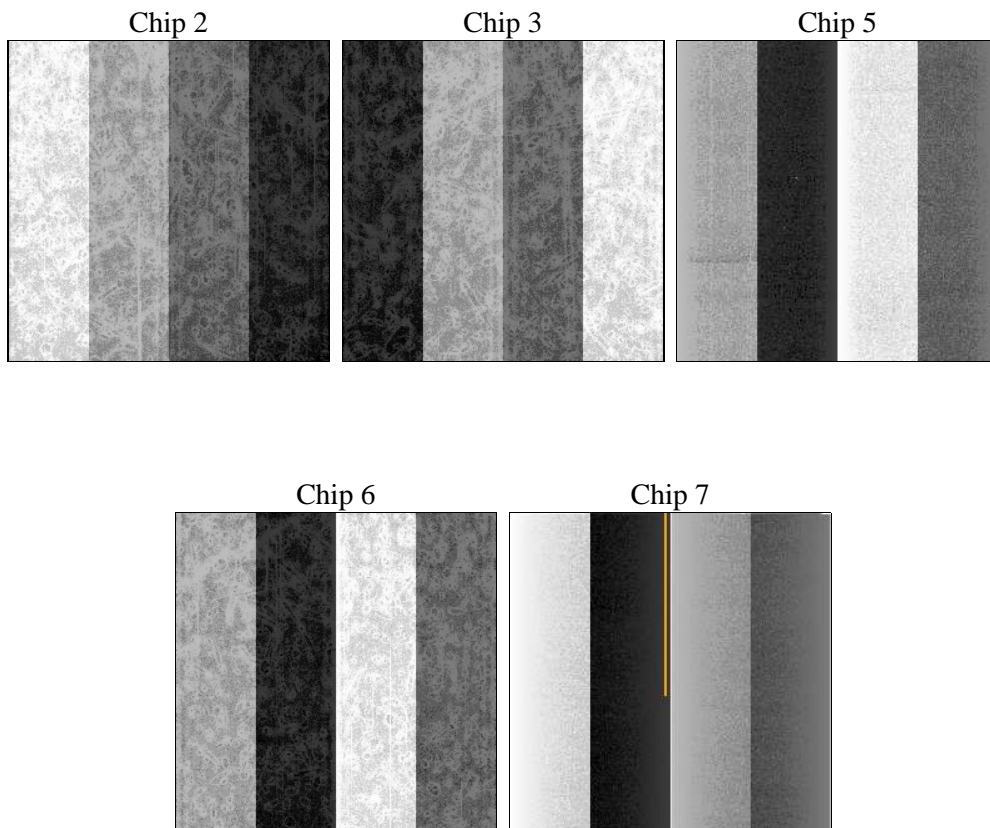
## 2 OBI

### 2.1 OBI

#### 2.1.1 Images



#### 2.1.2 Bias



### 2.1.3 Parameters

obi_num	0	Obi number	sched_exp_time	12000.788000	[s] Scheduled observation exposure time
ascdsver	8.4.4	Processing system revision	ontime	12158.200093508	Sum of GTIs [s]
caldbver	4.4.9	&#160	ontime2	12158.200093508	Sum of GTIs [s]
date	2012-05-26T05:03:51	Date and time of file creation	ontime3	12155.059133172	Sum of GTIs [s]
revision	2	Processing version of data	ontime5	12158.200093508	Sum of GTIs [s]
			ontime6	12158.200093508	Sum of GTIs [s]
			ontime7	12158.200093508	Sum of GTIs [s]
			l1events	598417	Number of level 1 events

### 2.1.4 Events

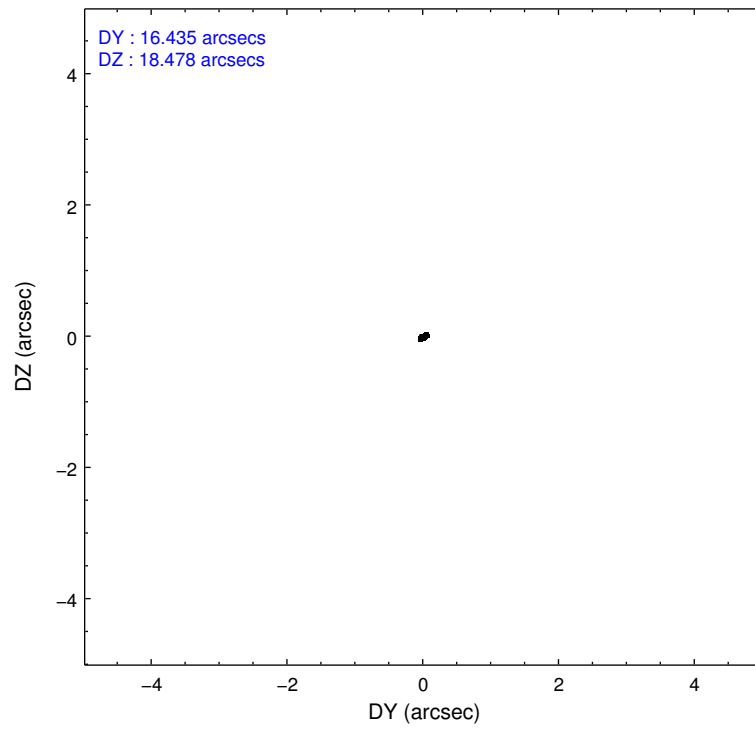
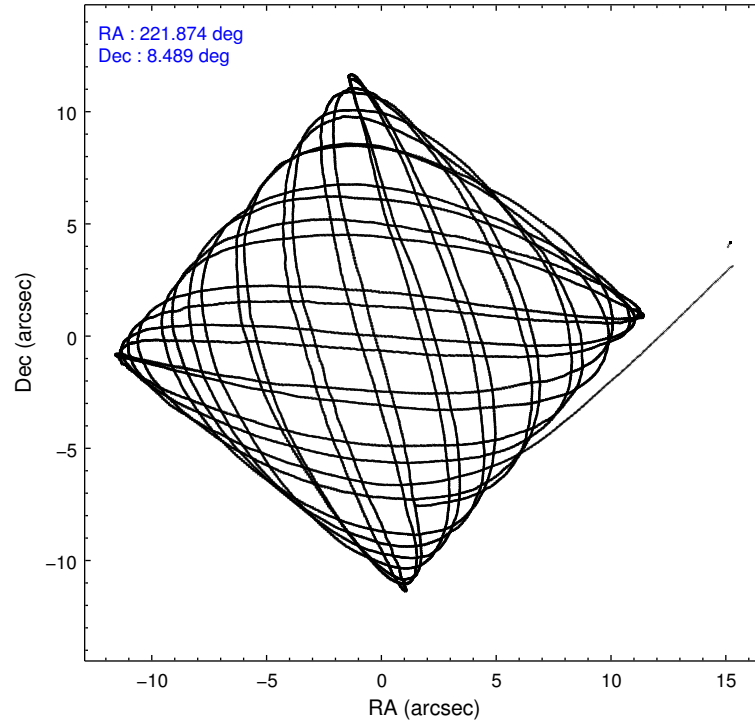
	ccd 2	ccd 3	ccd 5	ccd 6	ccd 7
level 1 events	105930	100386	151765	104755	135581
rejected events	95422	90420	75118	93307	65563
rejected %	90%	90%	49%	89%	48%

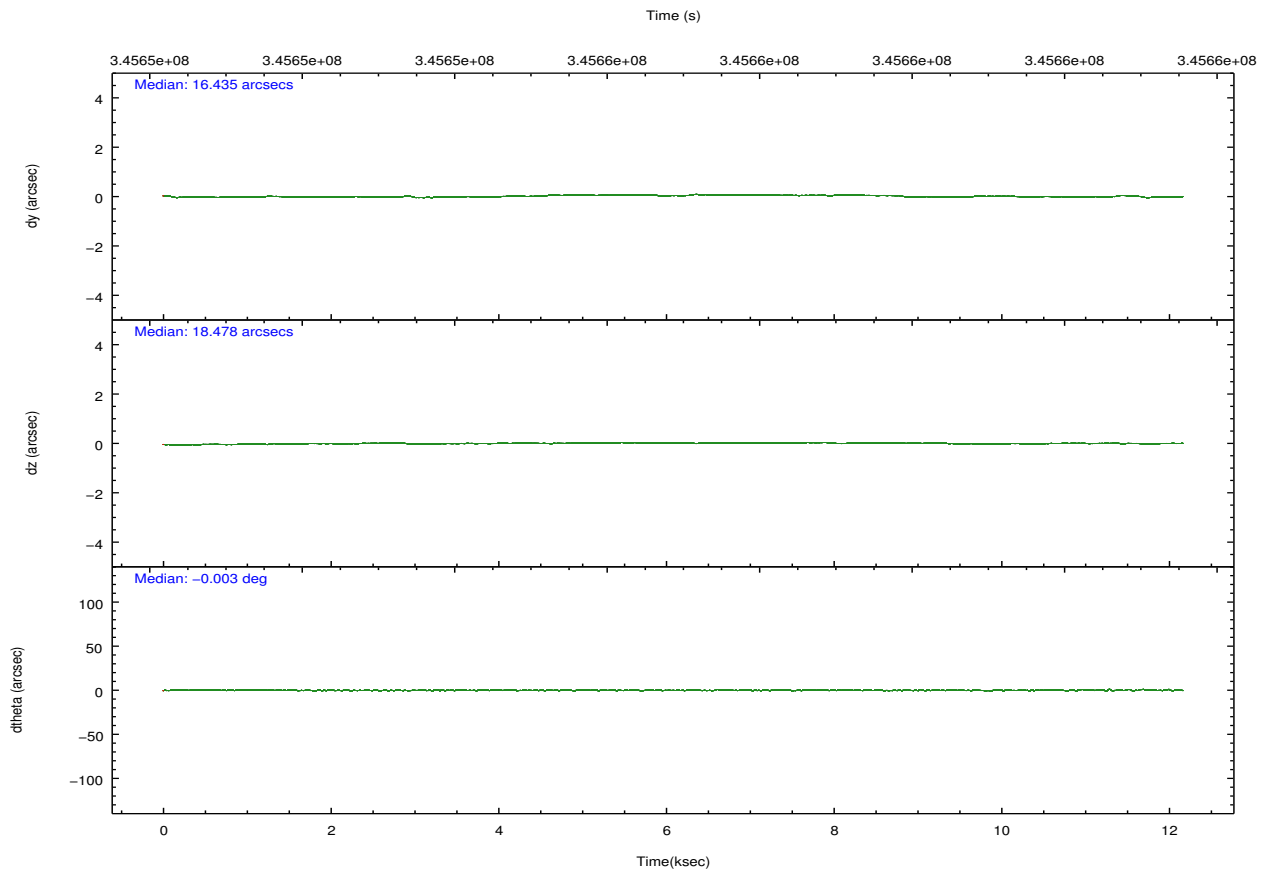
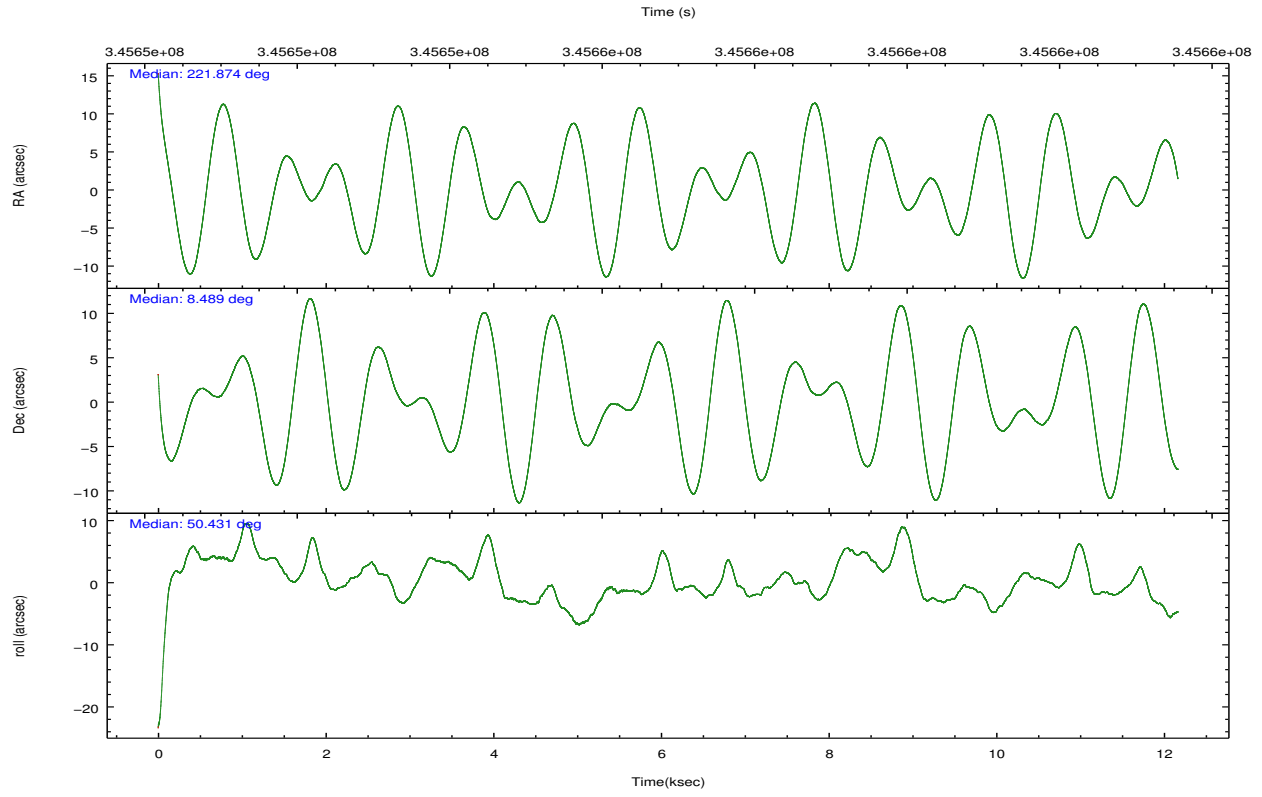
	ccd 2	ccd 3	ccd 5	ccd 6	ccd 7
grade 0 events	3786	3755	10608	4349	10469
	3%	3%	6%	4%	7%
grade 1 events	52	60	293	59	190
	0%	0%	0%	0%	0%
grade 2 events	2591	2113	22946	2449	15346
	2%	2%	15%	2%	11%
grade 3 events	1141	1153	3067	1197	6812
	1%	1%	2%	1%	5%
grade 4 events	1115	1070	2929	1165	6870
	1%	1%	1%	1%	5%
grade 5 events	3383	4278	11277	4299	12431
	3%	4%	7%	4%	9%
grade 6 events	2012	1991	38060	2434	31392
	1%	1%	25%	2%	23%
grade 7 events	91850	85966	62585	88803	52071
	86%	85%	41%	84%	38%

## 2.2 Compared Parameters

Parameter	Planned	Actual	Parameter	Planned	Actual
Instrument	ACIS	ACIS	Obspar format version number	7	7
Detector	ACIS-23567	ACIS-23567	Obspar file type	PREDICTED	ACTUAL
Grating	NONE	NONE	Obspar update status	NONE	UPDATED
Data mode	VFAINT	VFAINT	CCD I0 on	N	N
Observation mode	POINTING	POINTING	CCD I1 on	N	N
[deg] Pointing RA	221.869307	221.8735485255843	CCD I2 on	O1	Y
[deg] Pointing Dec	8.462127	8.489140160905359	CCD I3 on	O2	Y
[deg] Pointing Roll	50.279290	50.43527907086444	CCD S0 on	N	N
[mm] SIM focus pos	-0.684267	-0.6828225247311905	CCD S1 on	O4	Y
[mm] SIM defocus	0	0.001444936568705701	CCD S2 on	O3	Y
[mm] SIM translation stage pos	-190.132523	-190.1425803651734	CCD S3 on	Y	Y
[mm] SIM translation stage offset	0	0.01005778216563158	CCD S4 on	N	N
[s] Observation start time (MET)	345650943.184000	345649876.16075	CCD S5 on	N	N
Observation start date	2008-12-14T14:07:58	2008-12-14T13:51:16	Number of optional ACIS chips dropped	0	0
[s] Observation end time (MET)	345662944.184000	345663171.43641	On-chip summing requested	N	N
Observation end date	2008-12-14T17:27:59	2008-12-14T17:32:51	Subarray requested	NONE	NONE
Read mode	TIMED	TIMED	Alternating exposures requested	N	N
			[s] Primary exposure time	0.000000	3.1

## 2.3 Aspect



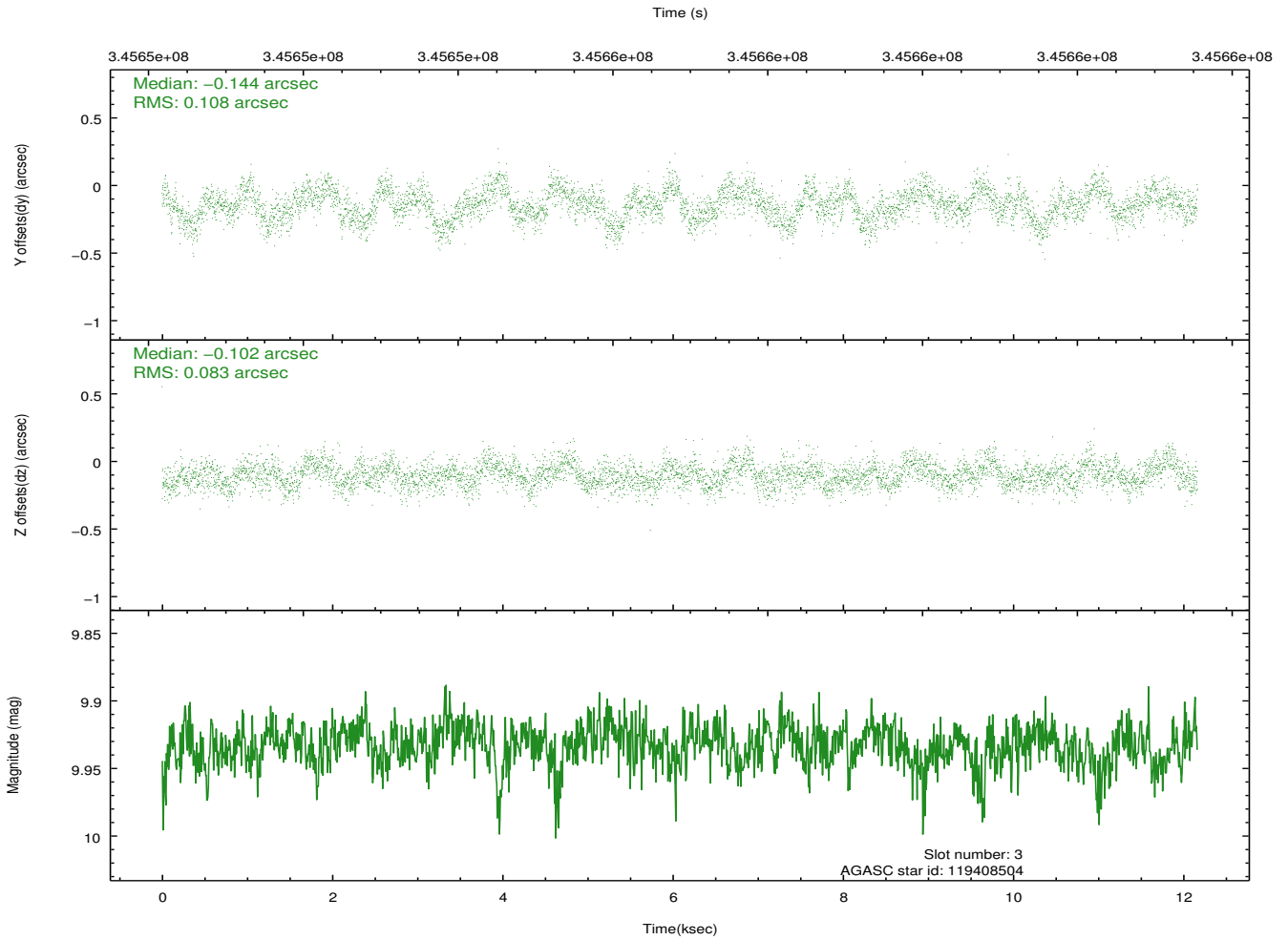
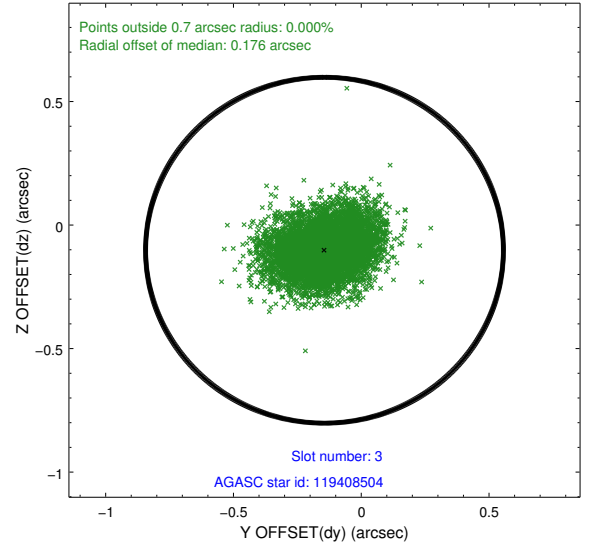
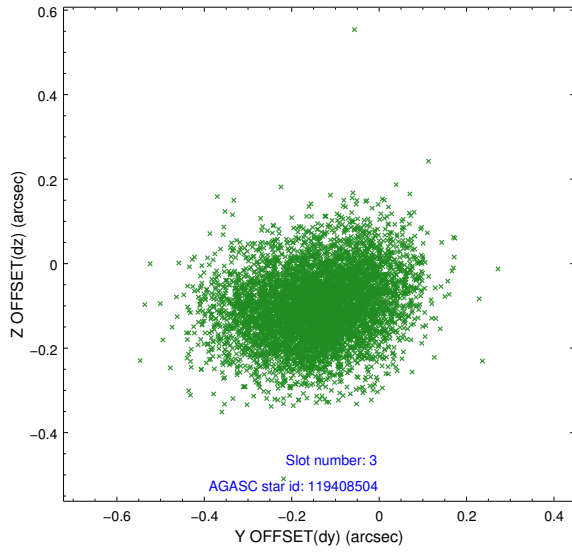


### Slot Statistics

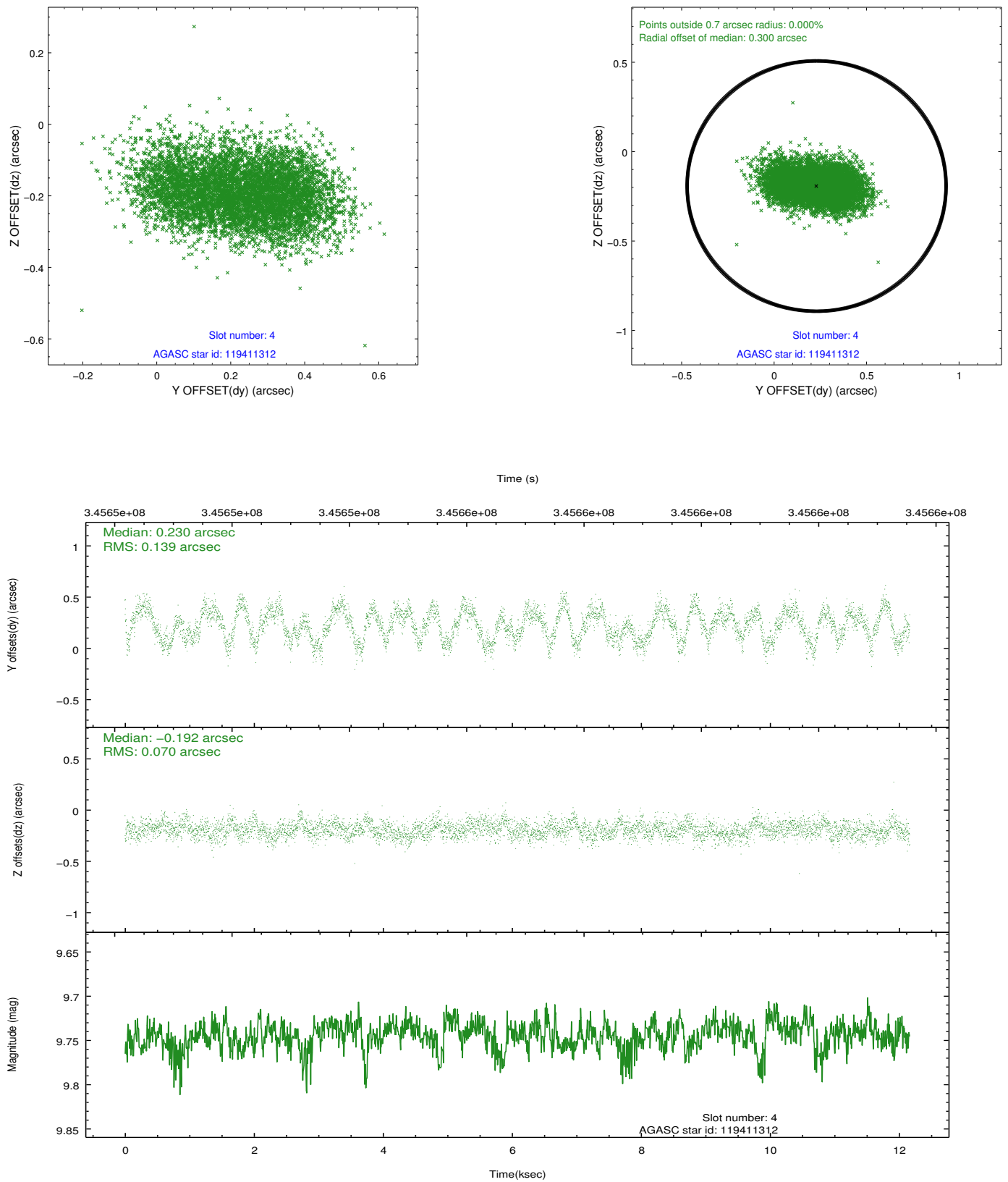
slot	status	id	mag	n_pts	med_dy	med_dz	dr1	dr2	ra	dec	mean_y	mean_z
0	FID	ACIS-S-2	6.89	2968	-0.056	-0.027	0.007	0.011	0.000000	0.000000	-769.55	-1739.91
1	FID	ACIS-S-4	6.97	2966	0.115	0.034	0.005	0.010	0.000000	0.000000	2143.75	168.15
2	FID	ACIS-S-5	7.01	2968	-0.090	0.001	0.006	0.010	0.000000	0.000000	-1821.86	162.34
3	GUIDE	119408504	9.93	5920	-0.144	-0.102	0.145	0.236	221.832340	9.291683	2213.40	2010.29
4	GUIDE	119411312	9.74	5922	0.230	-0.192	0.169	0.268	221.132597	8.336624	-2021.97	1731.55
5	GUIDE	119419488	7.85	5934	0.035	0.241	0.068	0.111	221.772256	8.208674	-922.88	-316.37
6	GUIDE	119420080	6.85	5930	-0.061	-0.056	0.074	0.126	221.400687	8.159680	-1904.01	588.72
7	GUIDE	120327320	9.65	5894	-0.040	0.103	0.128	0.230	222.306742	8.399268	822.08	-1341.94

## 2.4 Star Slots

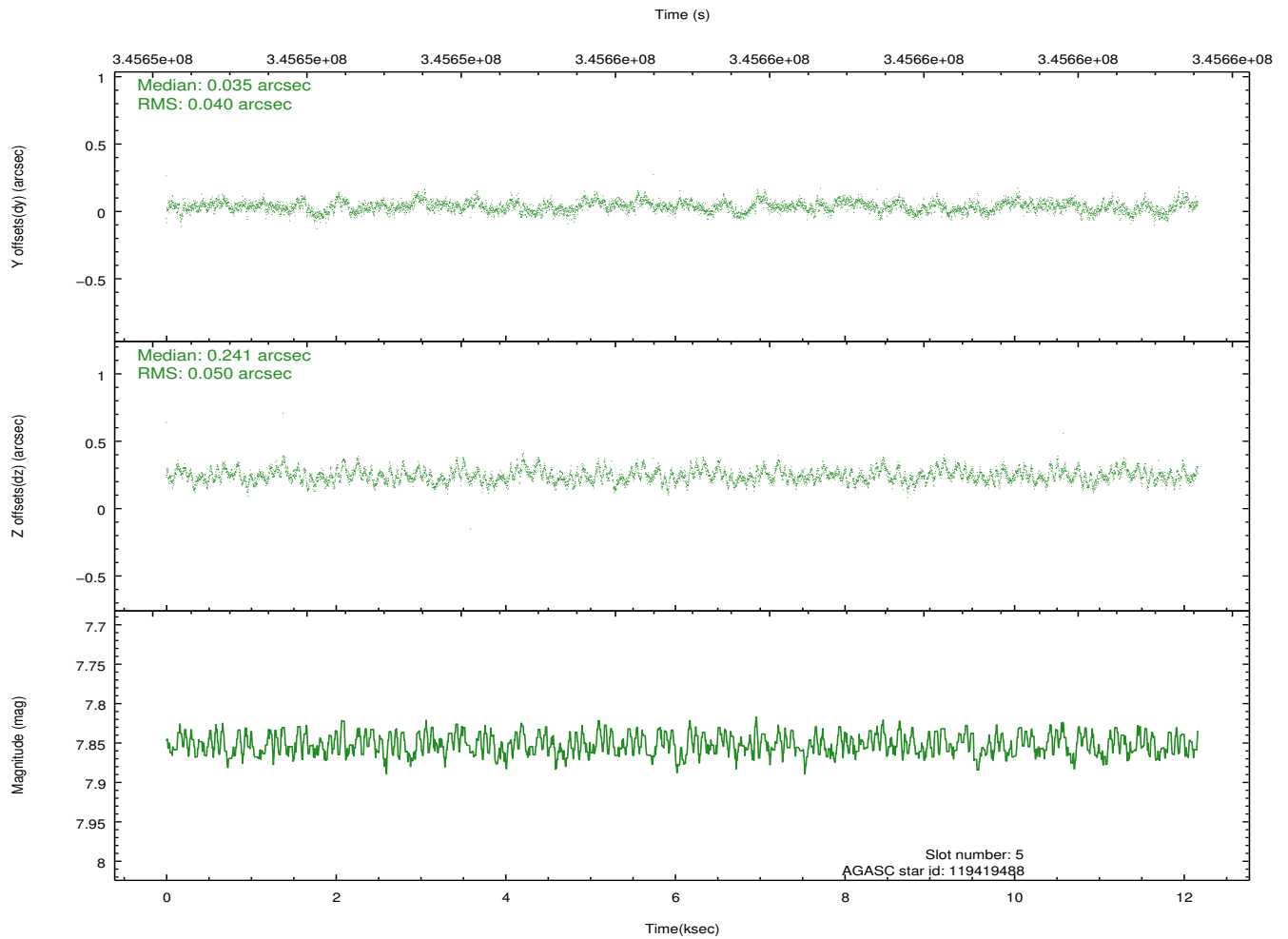
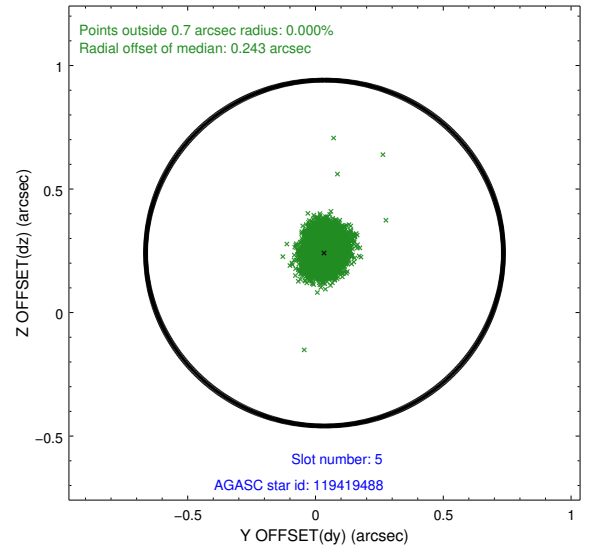
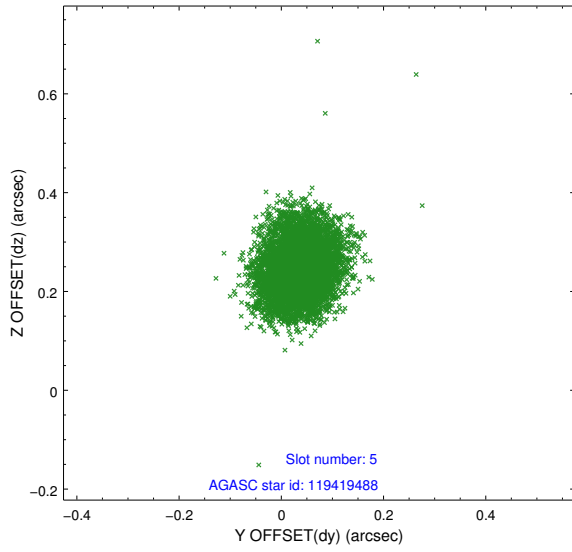
### 2.4.1 Slot 3



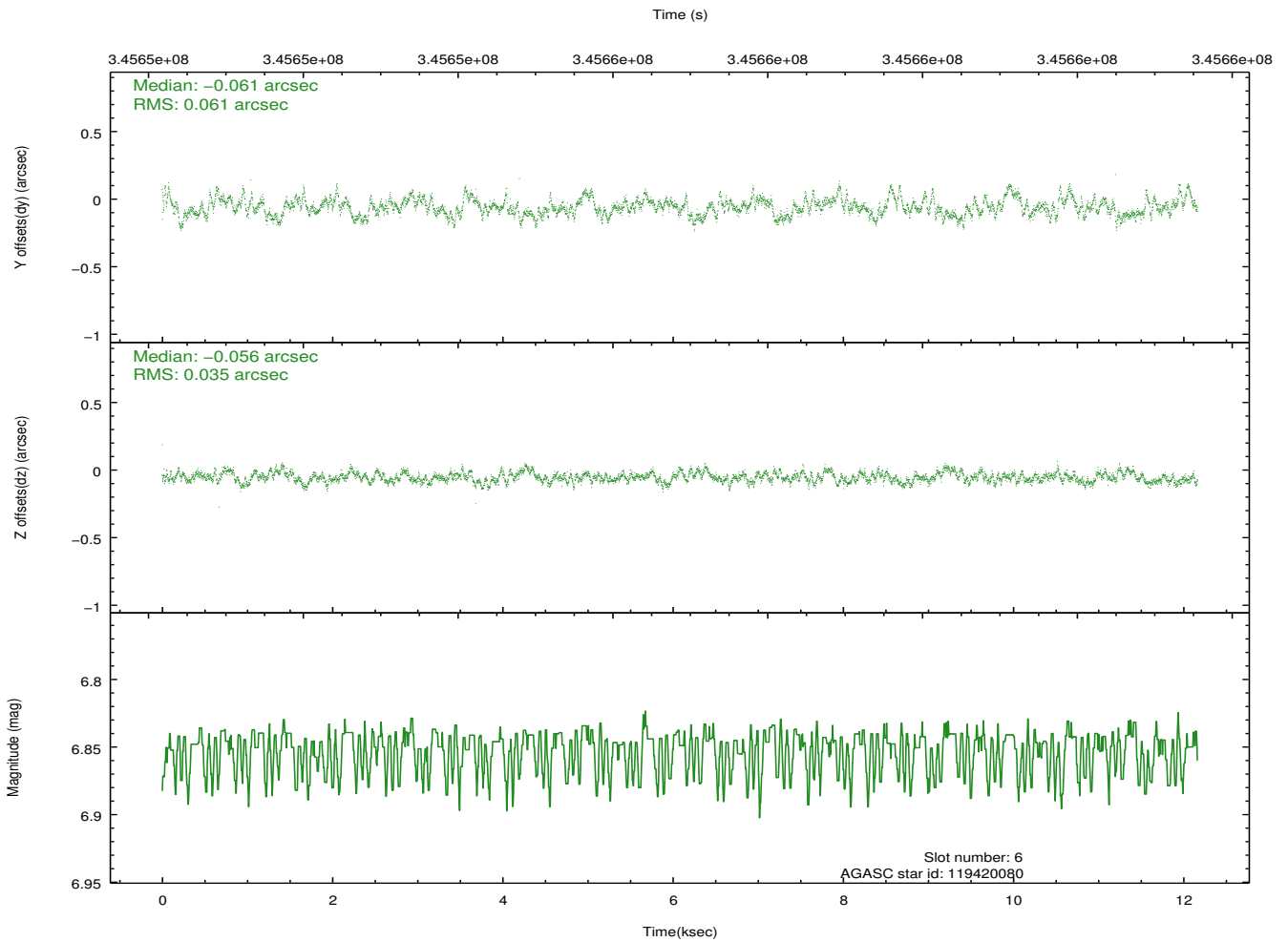
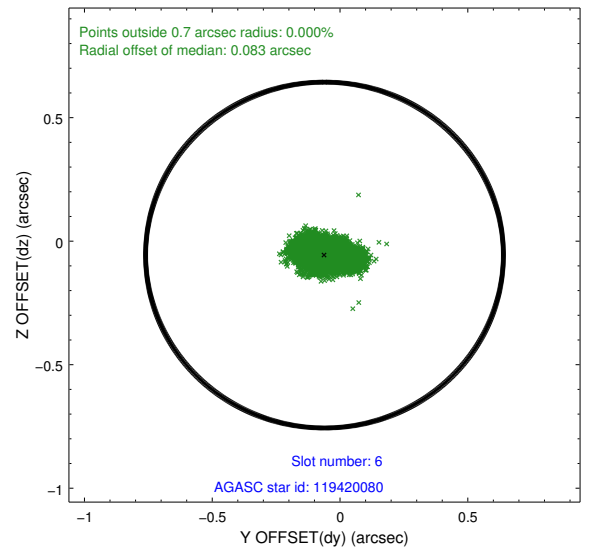
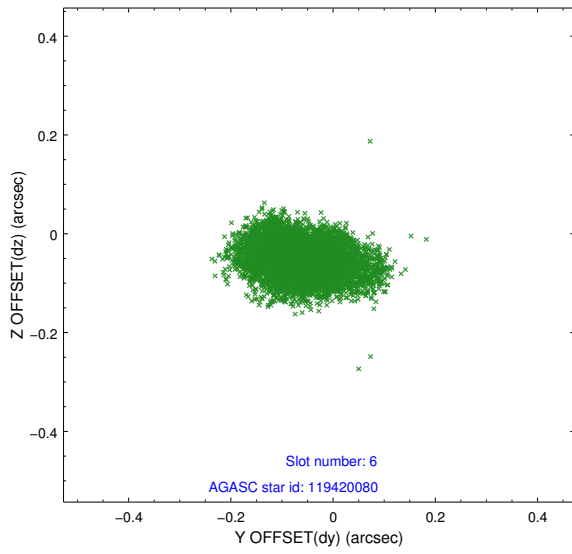
## 2.4.2 Slot 4



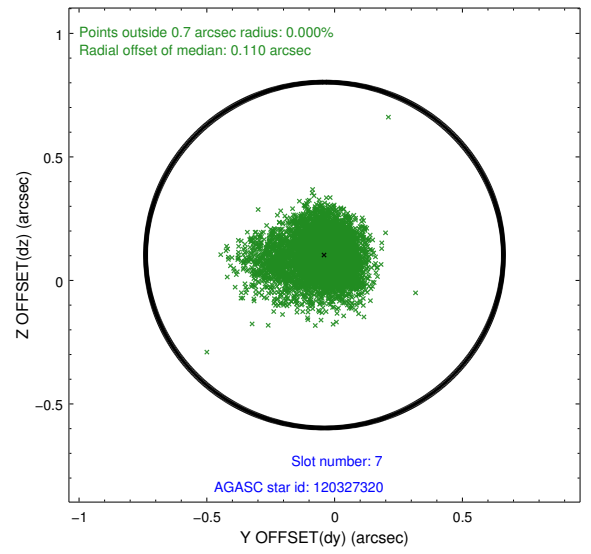
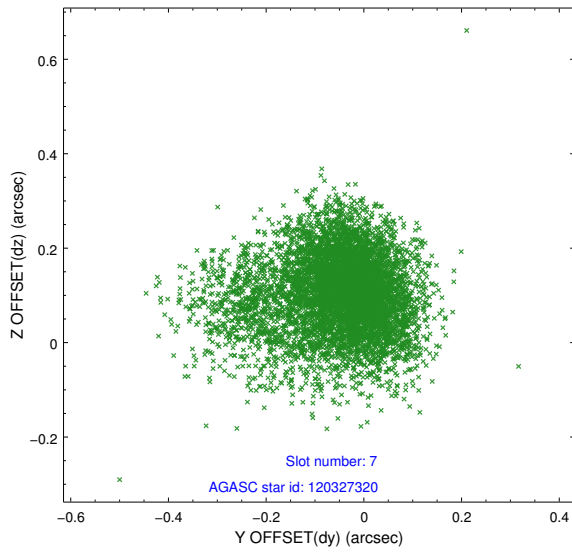
### 2.4.3 Slot 5



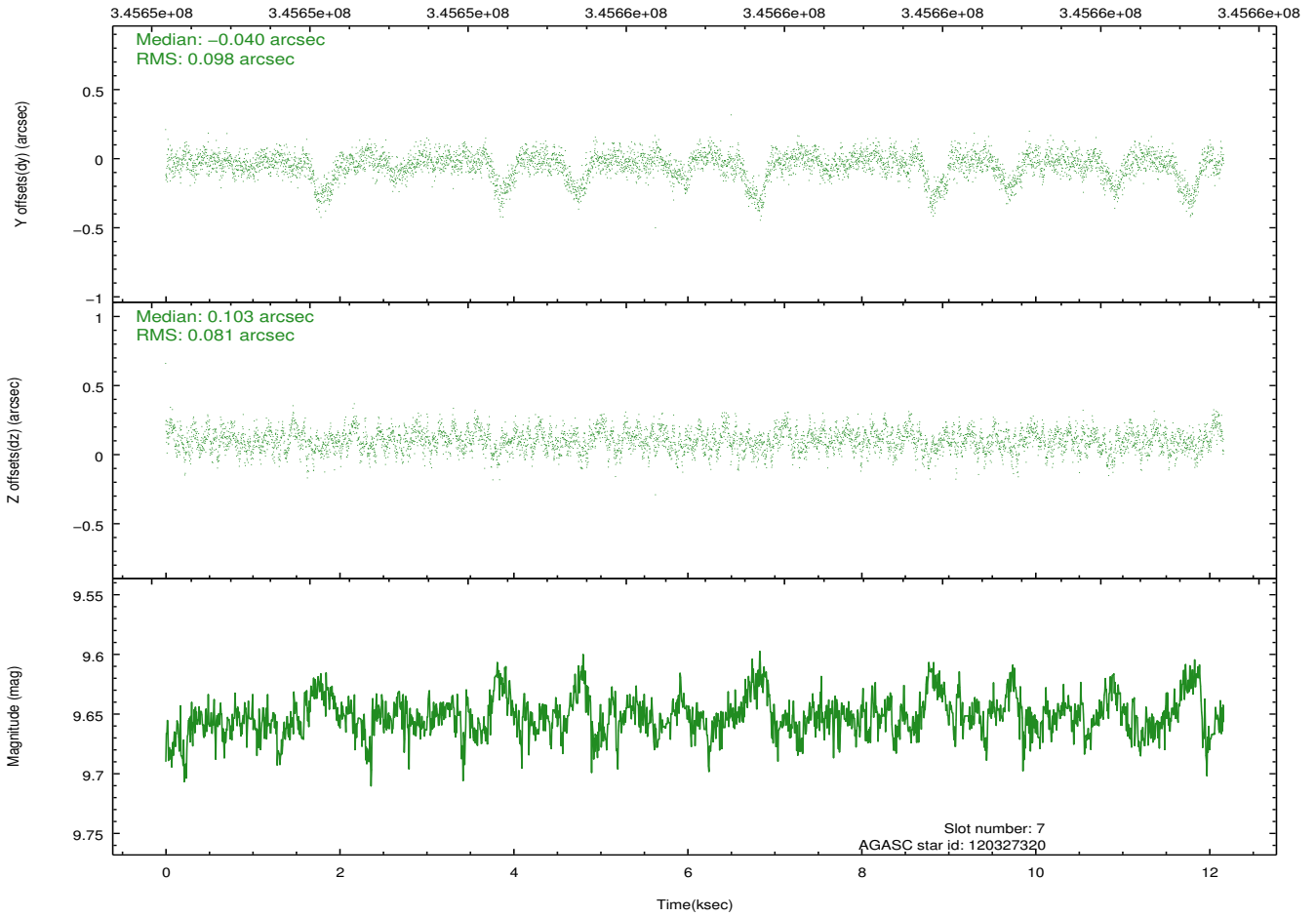
## 2.4.4 Slot 6



### 2.4.5 Slot 7

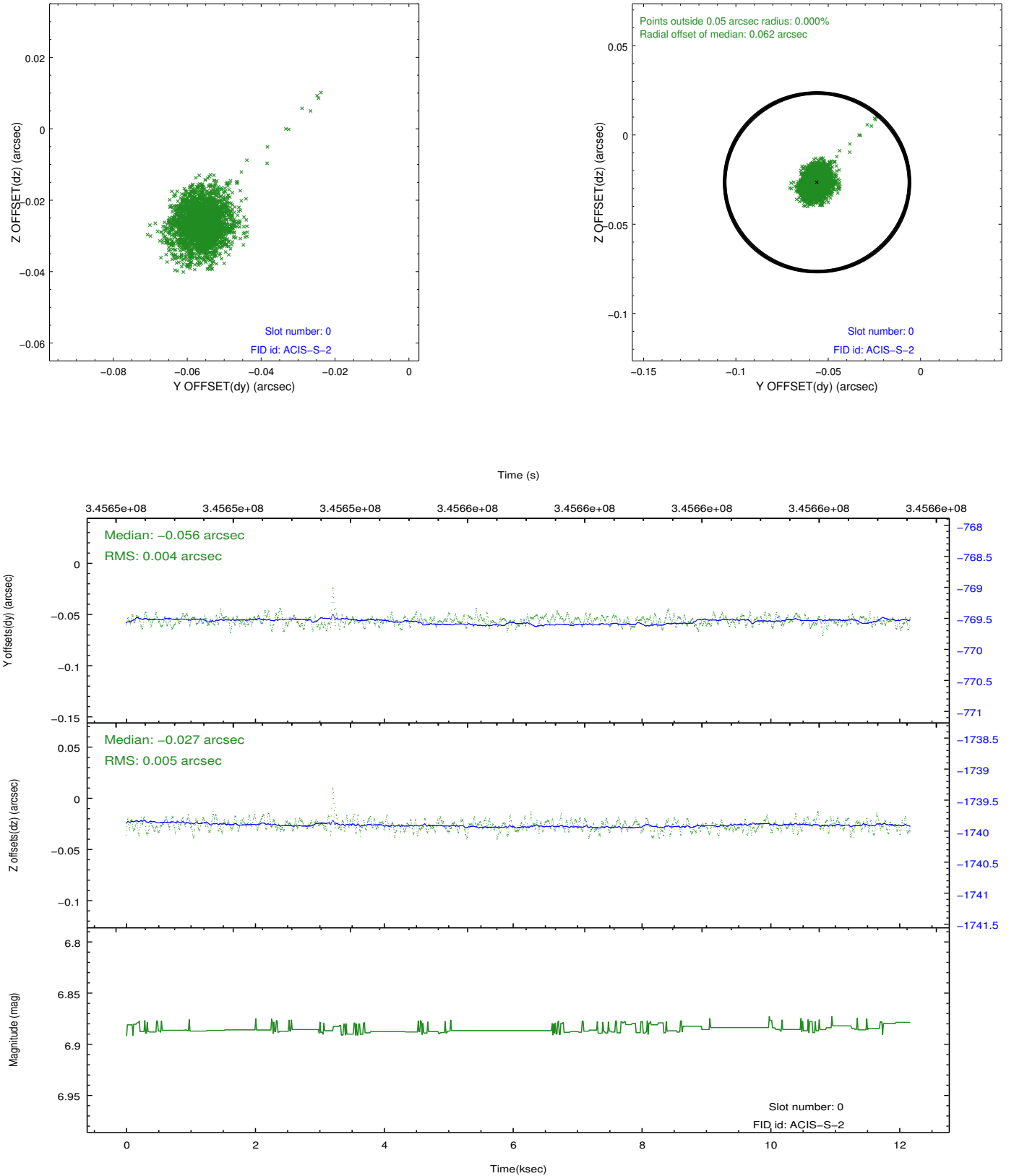


Time (s)

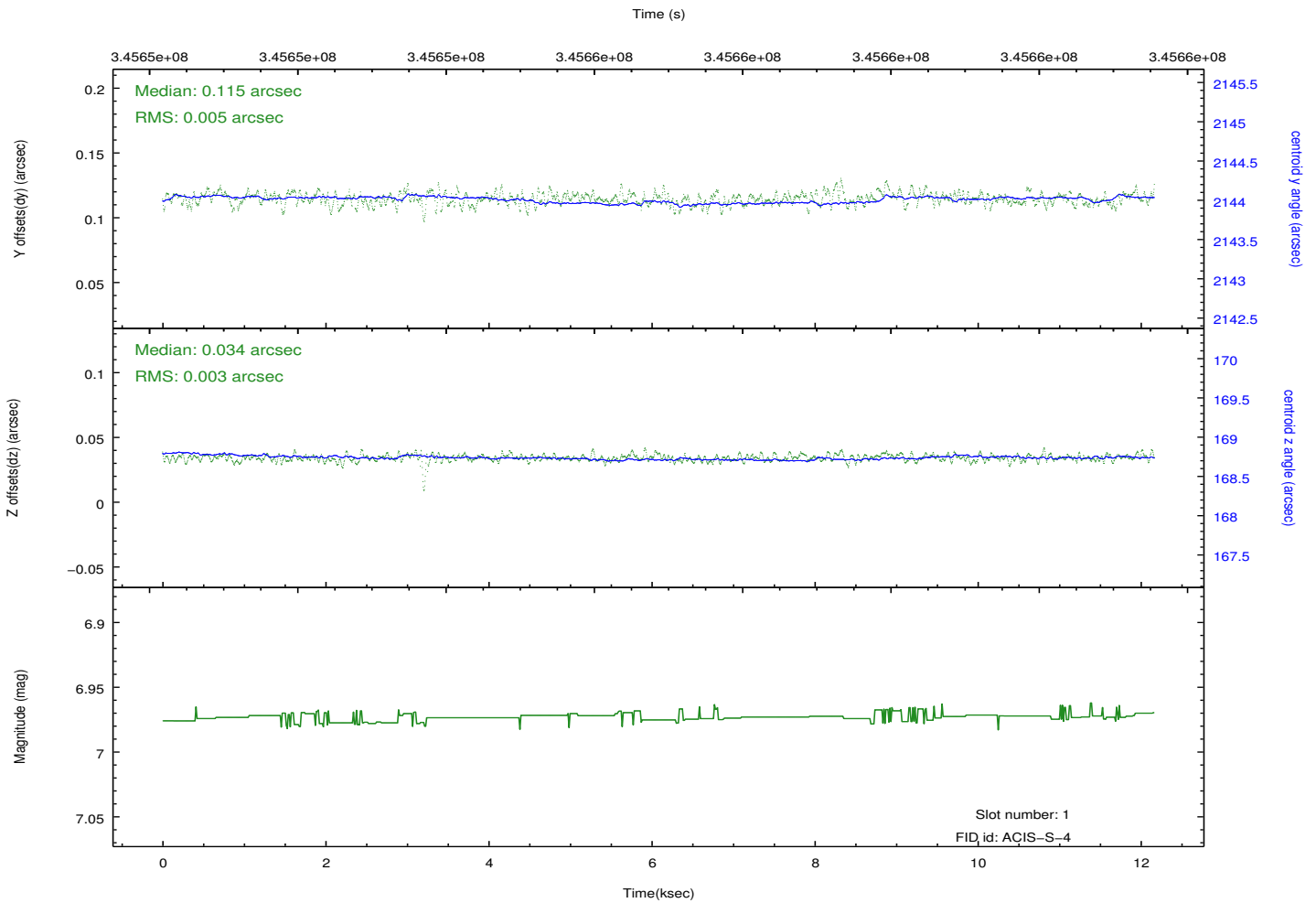
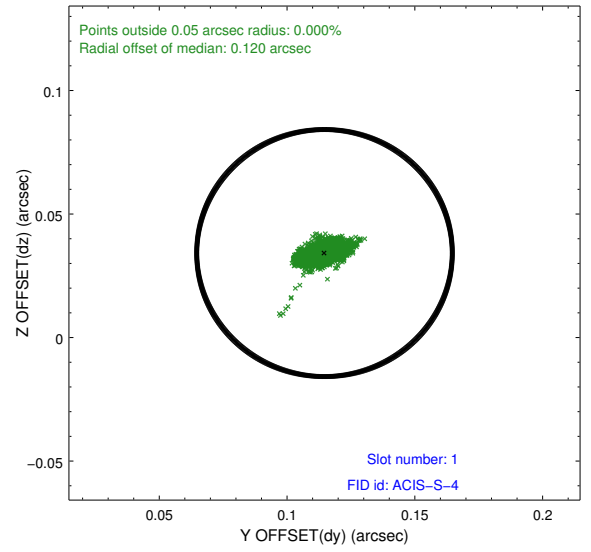
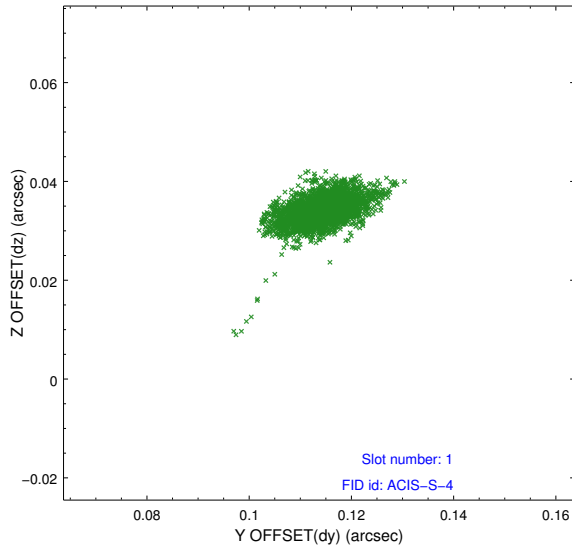


## 2.5 FID Slots

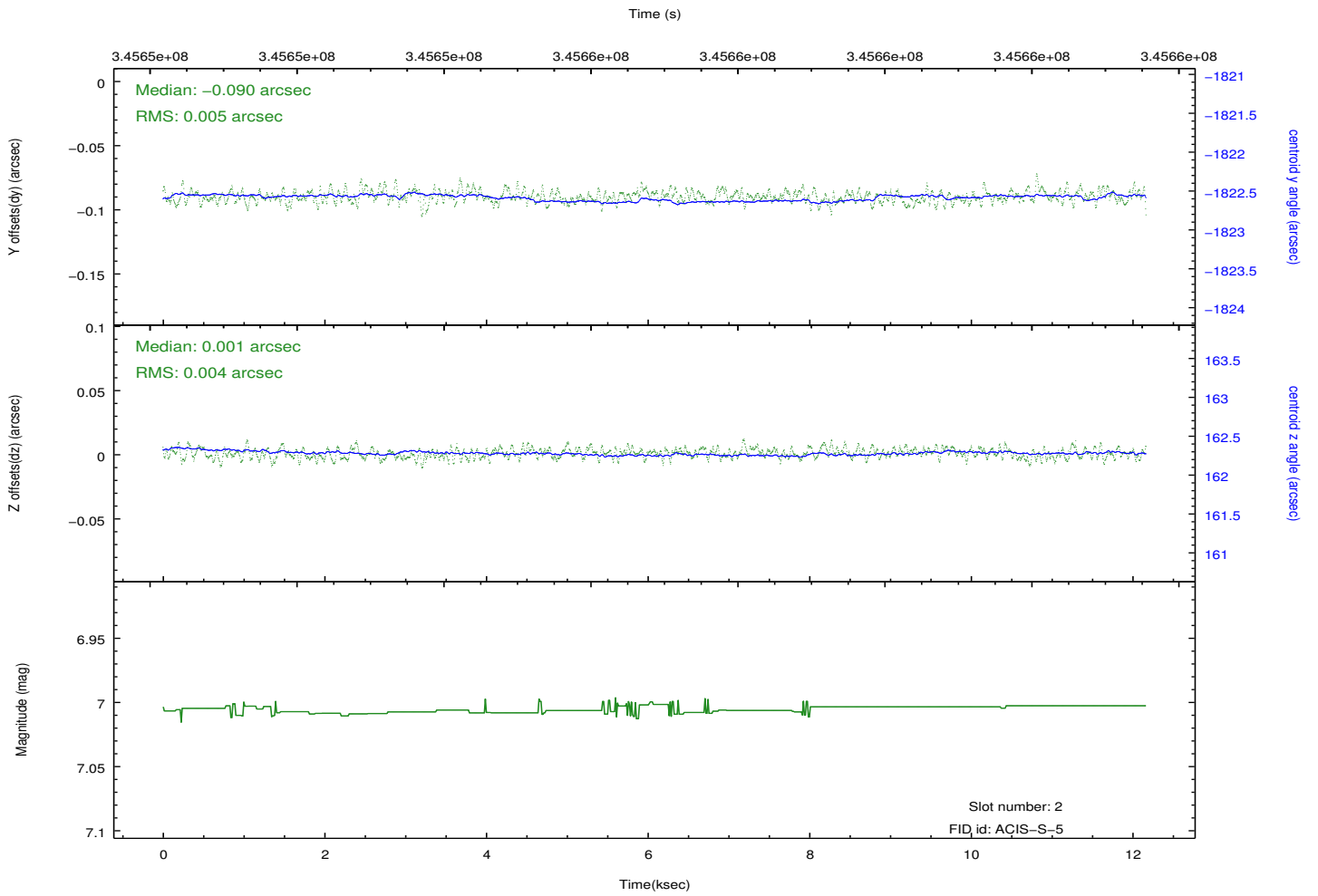
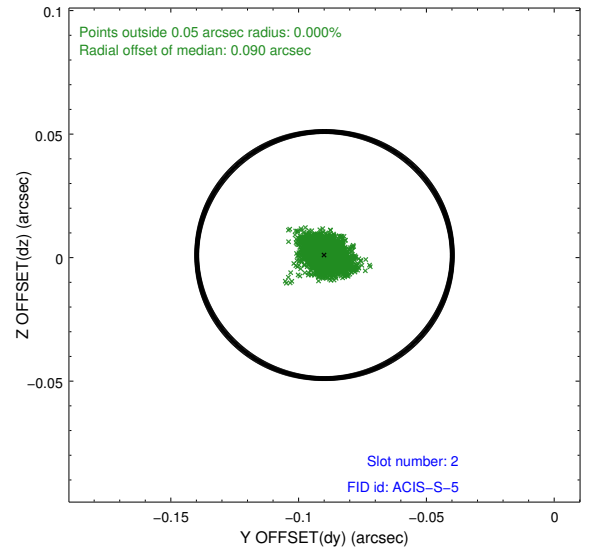
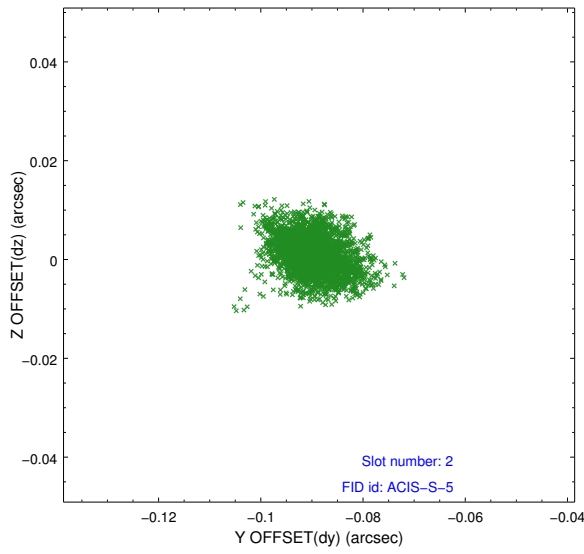
### 2.5.1 Slot 0



## 2.5.2 Slot 1



### 2.5.3 Slot 2



# A Summary

## A.1 Status

V&V Scientist	Jen Lauer
V&V Date (YYYY-MM-DD)	2012.06.01
V&V Edition	1
V&V Disposition and Status	OK
V&V Charge Time	12.1582

## A.2 Comments