

V&V Reference Report

L2 ASCDS Version : 8.4.4

Observation 10681 - L2 Version 2
Chandra X-Ray Center

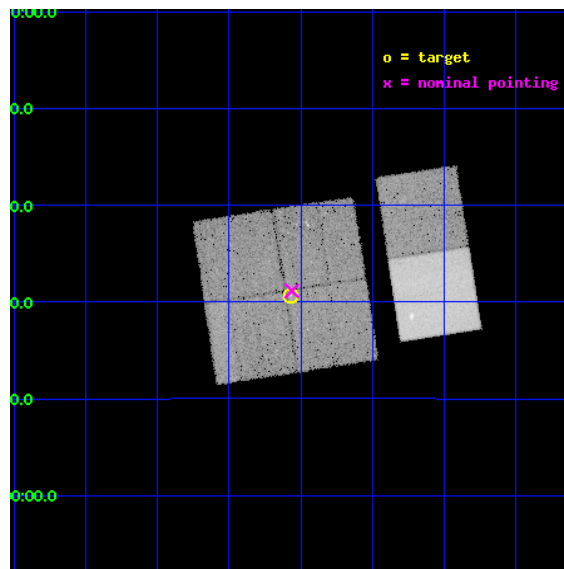
L2 Processing Date : May 31 2012

Contents

1	Front	2
2	OBI	3
2.1	OBI	3
2.1.1	Images	3
2.1.2	Bias	3
2.1.3	Parameters	4
2.1.4	Events	4
2.2	Compared Parameters	5
2.3	Aspect	6
2.4	Star Slots	9
2.4.1	Slot 3	9
2.4.2	Slot 4	10
2.4.3	Slot 5	11
2.4.4	Slot 6	12
2.4.5	Slot 7	13
2.5	FID Slots	14
2.5.1	Slot 0	14
2.5.2	Slot 1	15
2.5.3	Slot 2	16
A	Summary	17
A.1	Status	17
A.2	Comments	17

1 Front

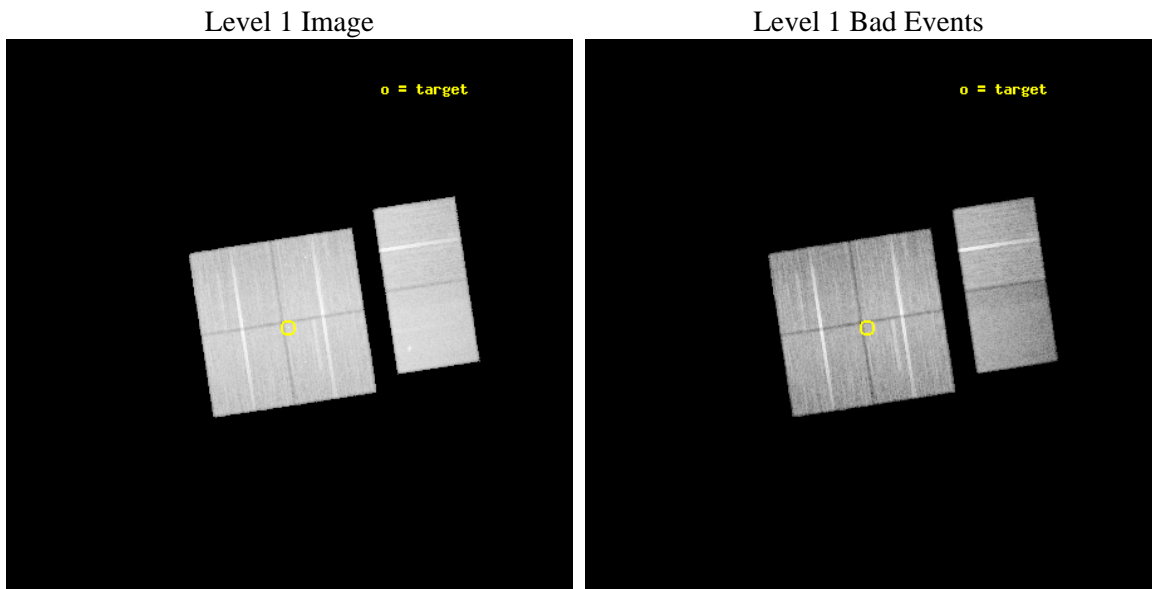
seq_num	200566	Sequence number
obs_id	10681	Observation id
title	G29.96-0.02: The enigma of ultra-compact HII regions	Proposal titl
observer	Professor Gordon Garmire	Principal investigator
object	G29.96-0.02	Source name
dtycycle	0	
cycle	P	events from which exps? Prim/Second/Both
ra_targ	281.516667	Observer's specified target RA [deg]
dec_targ	-2.655556	Observer's specified target Dec [deg]
ra_nom	281.51548398558	Nominal RA [deg]
dec_nom	-2.6475663935229	Nominal Dec [deg]
roll_nom	81.260681832413	Nominal Roll [deg]
revision	2	Processing version of data
ontime	27875.158925891	Sum of GTIs [s]
livetime	27522.186879166	Livetime [s]
ontime0	27878.399896204	Sum of GTIs [s]
ontime1	27878.399896204	Sum of GTIs [s]
ontime2	27878.399896204	Sum of GTIs [s]
ontime3	27875.158925891	Sum of GTIs [s]
ontime6	27871.917905807	Sum of GTIs [s]
ontime7	27878.399896204	Sum of GTIs [s]
l2events	229129	Number of level 2 events



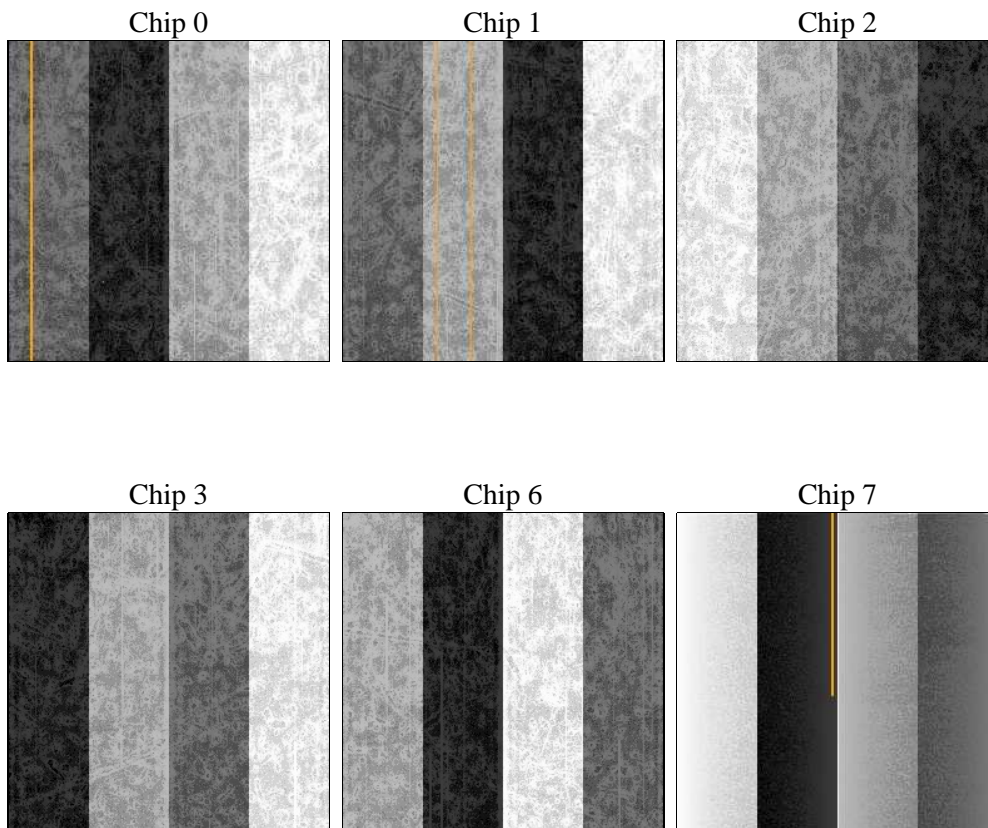
2 OBI

2.1 OBI

2.1.1 Images



2.1.2 Bias



2.1.3 Parameters

obi_num	0	Obi number	sched_exp_time	27750.000000	[s] Scheduled observation exposure time
ascdsver	8.4.4	Processing system revision	ontime	27875.158925891	Sum of GTIs [s]
caldbver	4.4.9	 	ontime0	27878.399896204	Sum of GTIs [s]
date	2012-05-31T15:32:18	Date and time of file creation	ontime1	27878.399896204	Sum of GTIs [s]
revision	2	Processing version of data	ontime2	27878.399896204	Sum of GTIs [s]
			ontime3	27875.158925891	Sum of GTIs [s]
			ontime6	27871.917905807	Sum of GTIs [s]
			ontime7	27878.399896204	Sum of GTIs [s]
			l1events	1459046	Number of level 1 events

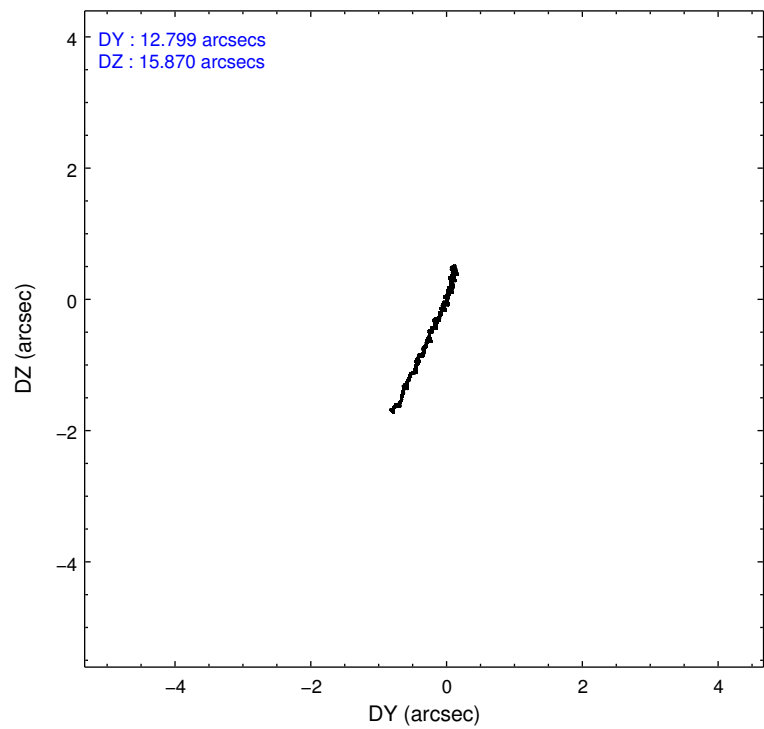
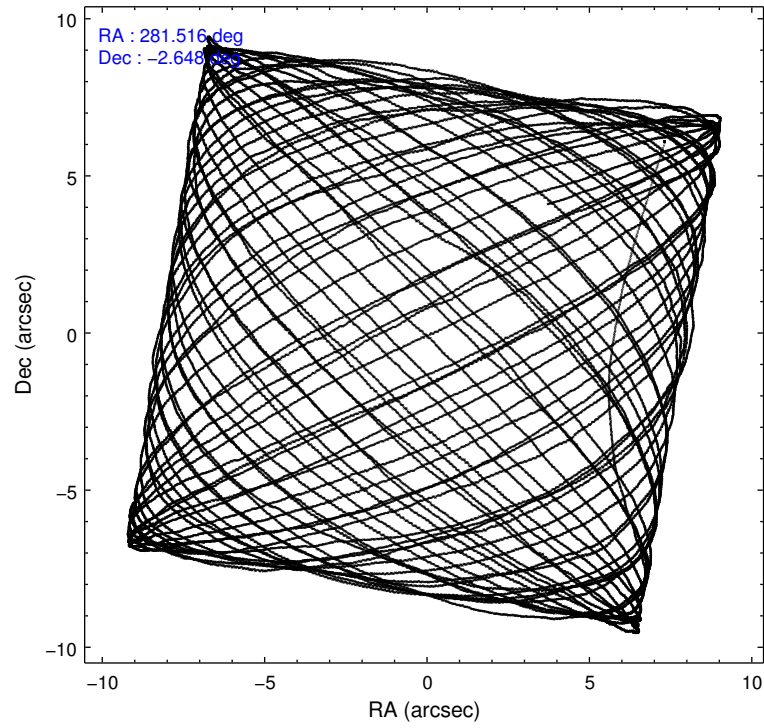
2.1.4 Events

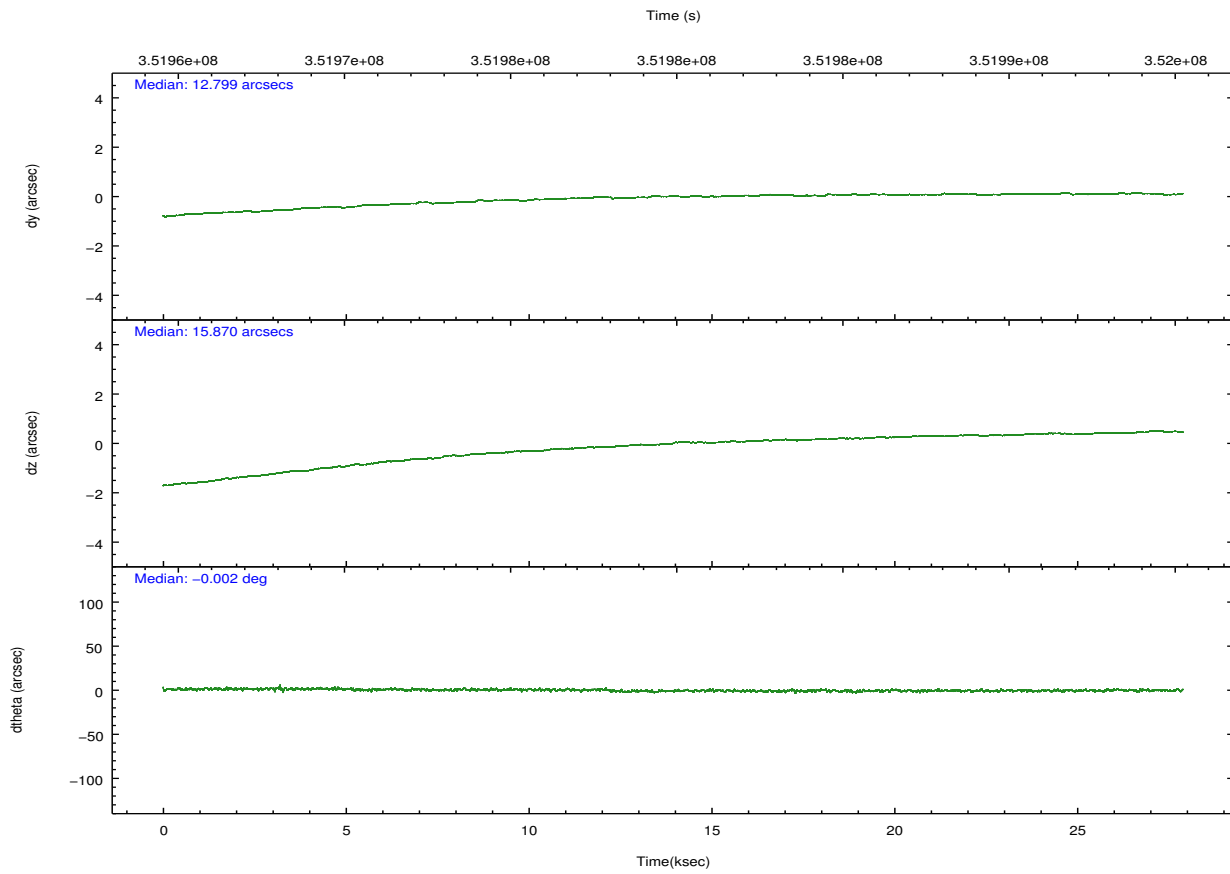
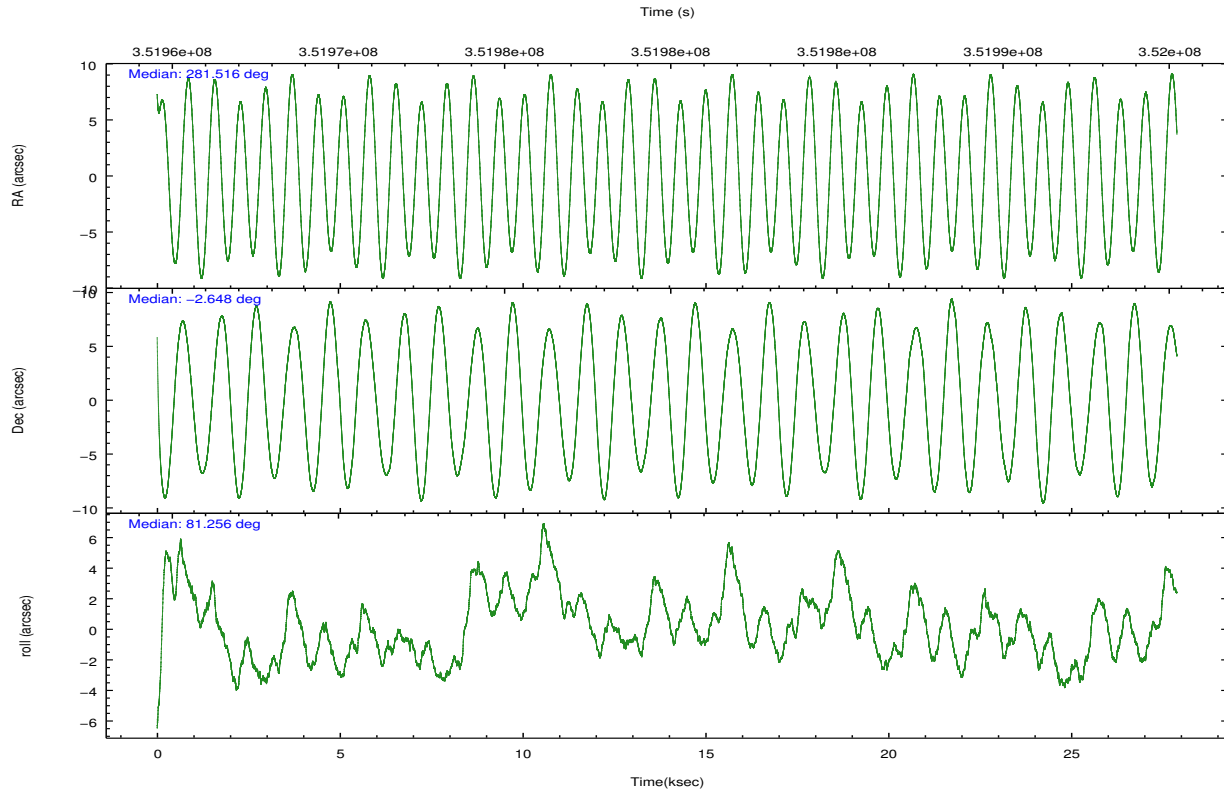
	ccd 0	ccd 1	ccd 2	ccd 3	ccd 6	ccd 7		ccd 0	ccd 1	ccd 2	ccd 3	ccd 6	ccd 7
level 1 events	221994	225908	246668	239744	247688	277044	grade 0 events	9409	10944	9778	9621	9397	11938
rejected events	196942	197592	221482	215320	222066	151957		4%	4%	3%	4%	3%	4%
rejected %	88%	87%	89%	89%	89%	54%	grade 1 events	122	127	144	162	150	369
								0%	0%	0%	0%	0%	0%
							grade 2 events	6173	6422	5891	5347	5819	26328
								2%	2%	2%	2%	2%	9%
							grade 3 events	2682	3058	2629	2572	2707	11710
								1%	1%	1%	1%	1%	4%
							grade 4 events	2532	2908	2727	2653	2650	11702
								1%	1%	1%	1%	1%	4%
							grade 5 events	8476	9208	8276	9862	10031	29085
								3%	4%	3%	4%	4%	10%
							grade 6 events	4806	5555	4674	4708	5592	65907
								2%	2%	1%	1%	2%	23%
							grade 7 events	187794	187686	212549	204819	211342	120005
								84%	83%	86%	85%	85%	43%

2.2 Compared Parameters

Parameter	Planned	Actual	Parameter	Planned	Actual
Instrument	ACIS	ACIS	Obspar format version number	7	7
Detector	ACIS-012367	ACIS-012367	Obspar file type	PREDICTED	ACTUAL
Grating	NONE	NONE	Obspar update status	NONE	UPDATED
Data mode	VFAINT	VFAINT	Number of optional ACIS chips dropped	0	0
Observation mode	POINTING	POINTING	On-chip summing requested	N	N
[deg] Pointing RA	281.525552	281.5154839855828	Subarray requested	NONE	NONE
[deg] Pointing Dec	-2.673148	-2.647566393522889	Alternating exposures requested	N	N
[deg] Pointing Roll	81.052465	81.26068183241318	[s] Primary exposure time	0.000000	3.2
[mm] SIM focus pos	-0.782348	-0.7809083437167272			
[mm] SIM defocus	0	0.001439871863259334			
[mm] SIM translation stage pos	-233.592463	-233.5874344608287			
[mm] SIM translation stage offset	0	-0.005018542100998502			
[s] Observation start time (MET)	351966080.184000	351964743.62343			
Observation start date	2009-02-25T16:20:14	2009-02-25T15:59:03			
[s] Observation end time (MET)	351993830.184000	351994820.19993			
Observation end date	2009-02-26T00:02:44	2009-02-26T00:20:20			
Read mode	TIMED	TIMED			

2.3 Aspect



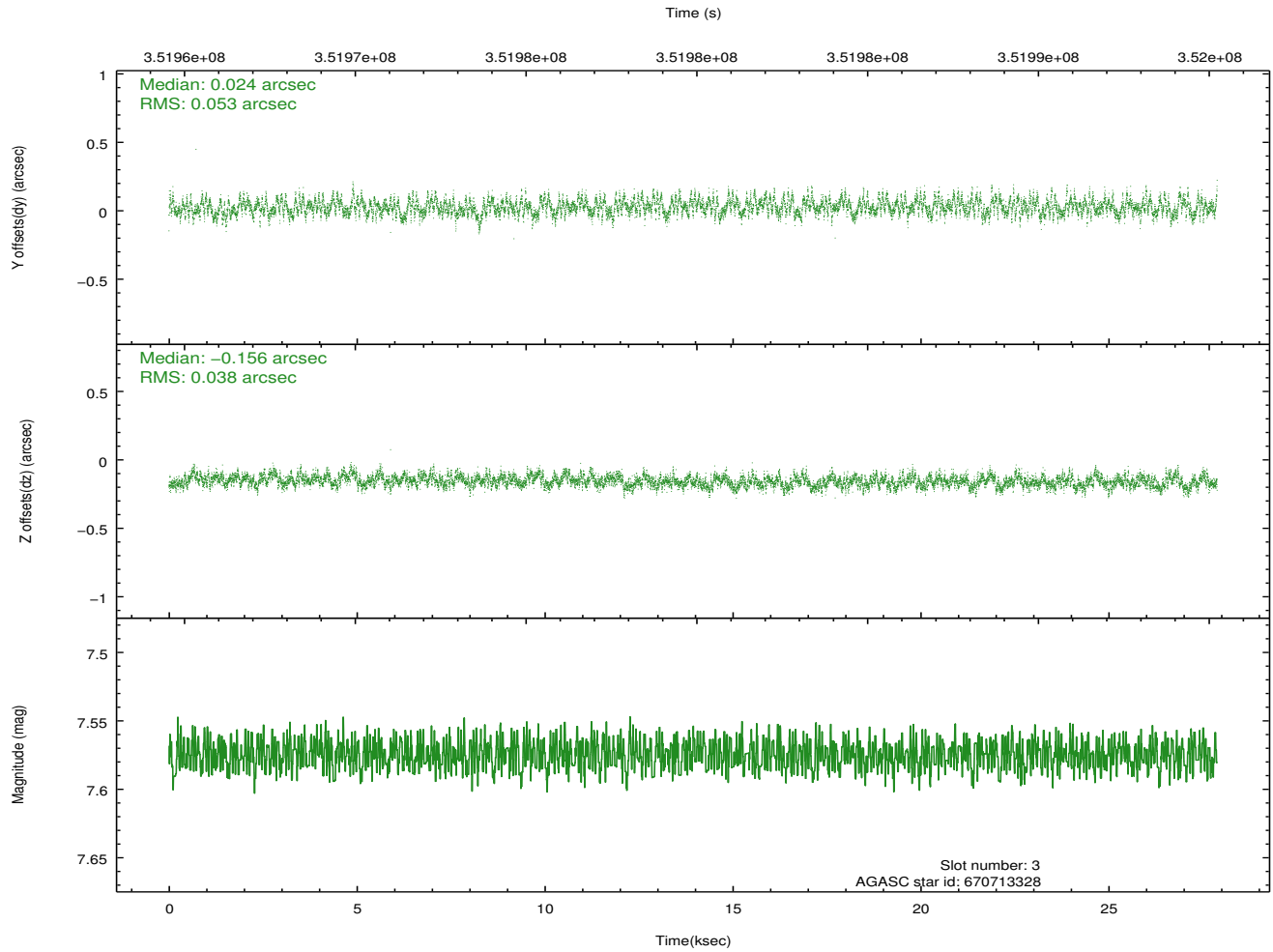
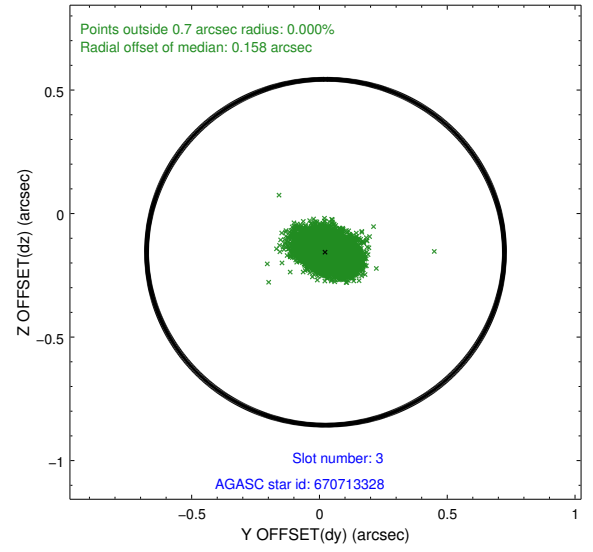
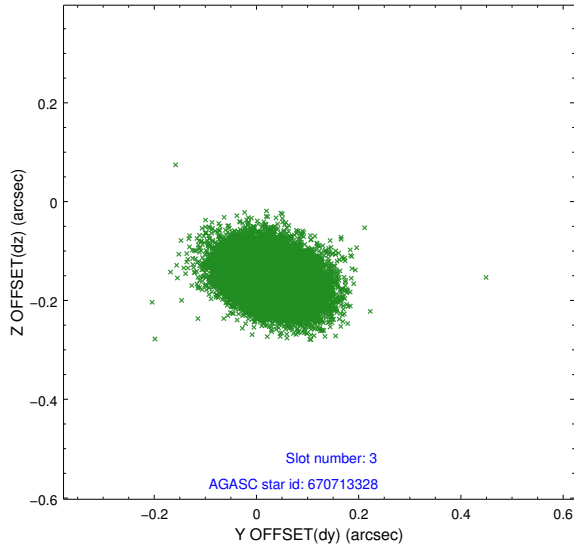


Slot Statistics

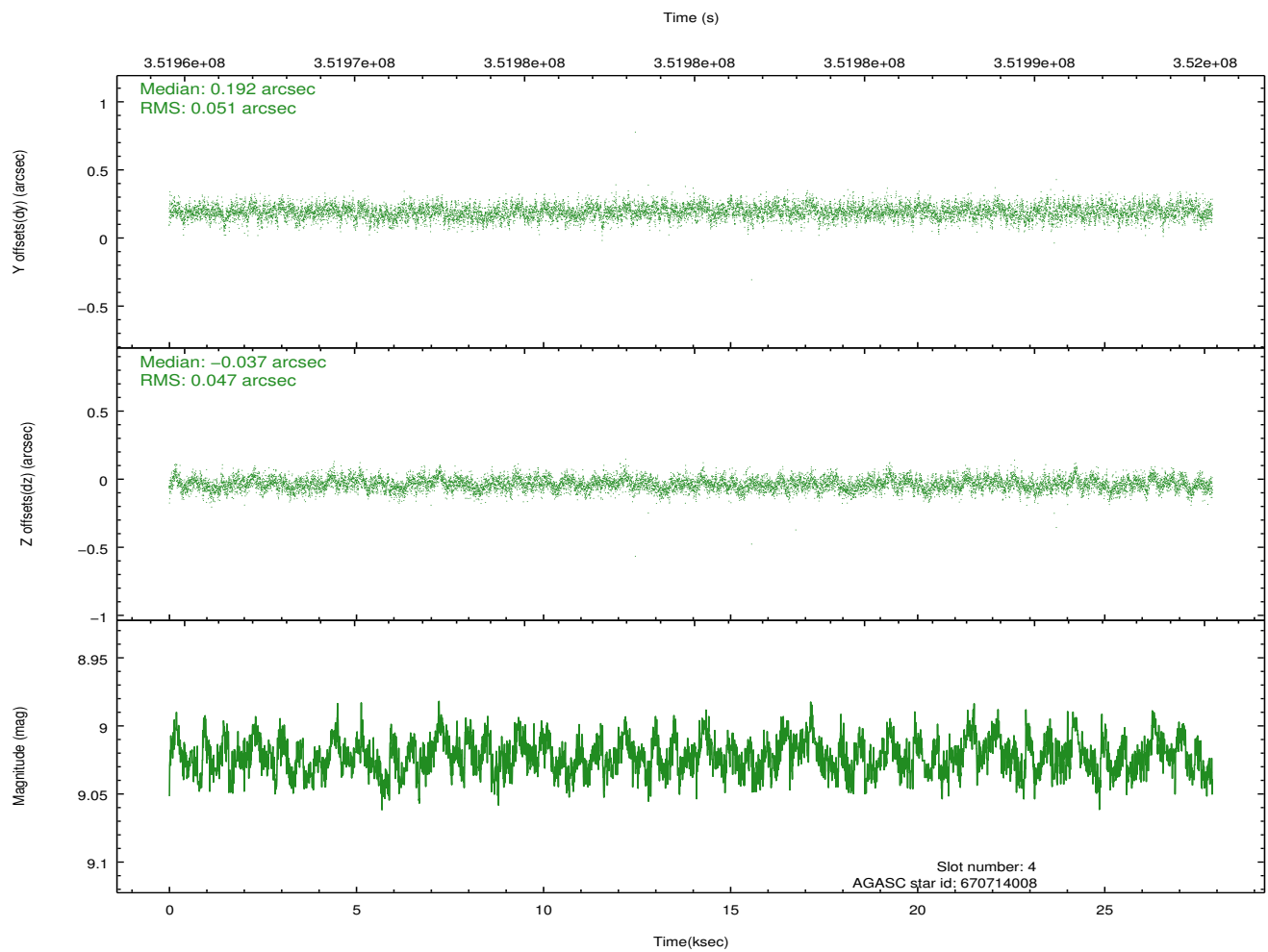
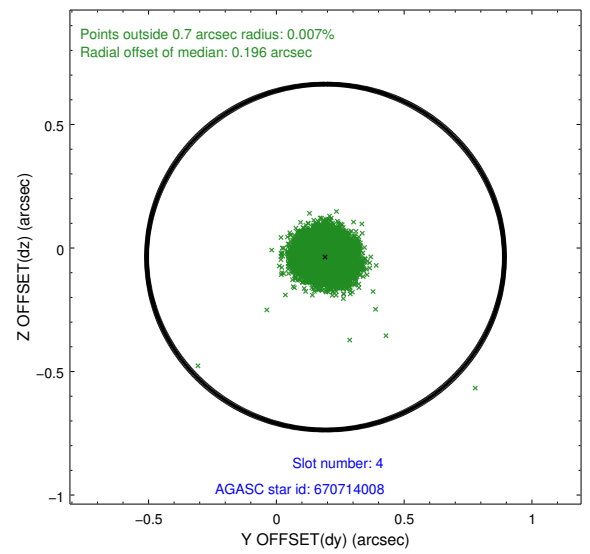
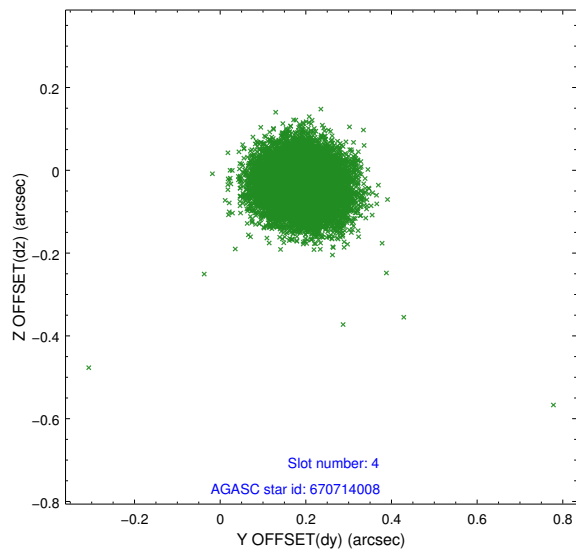
slot	status	id	mag	n_pts	med_dy	med_dz	dr1	dr2	ra	dec	mean_y	mean_z
0	FID	ACIS-I-1	7.02	6800	-0.059	0.013	0.023	0.061	0.000000	0.000000	926.78	-839.24
1	FID	ACIS-I-2	6.95	6801	-0.145	-0.068	0.011	0.022	0.000000	0.000000	-767.34	-845.81
2	FID	ACIS-I-4	6.94	6801	0.106	0.121	0.017	0.042	0.000000	0.000000	2146.81	1060.60
3	GUIDE	670713328	7.57	13603	0.024	-0.156	0.070	0.114	280.824681	-3.187771	-2222.57	2200.56
4	GUIDE	670714008	9.02	13596	0.192	-0.037	0.072	0.119	281.129237	-3.153193	-1928.93	1138.79
5	GUIDE	670830264	8.74	13586	0.177	-0.013	0.080	0.127	281.361536	-3.231556	-2077.44	269.95
6	GUIDE	670827280	9.40	13517	-0.224	-0.064	0.124	0.198	281.434708	-1.976010	2427.19	713.99
7	GUIDE	670827848	9.70	13546	-0.168	0.281	0.167	0.269	282.233886	-2.502228	1003.62	-2420.41

2.4 Star Slots

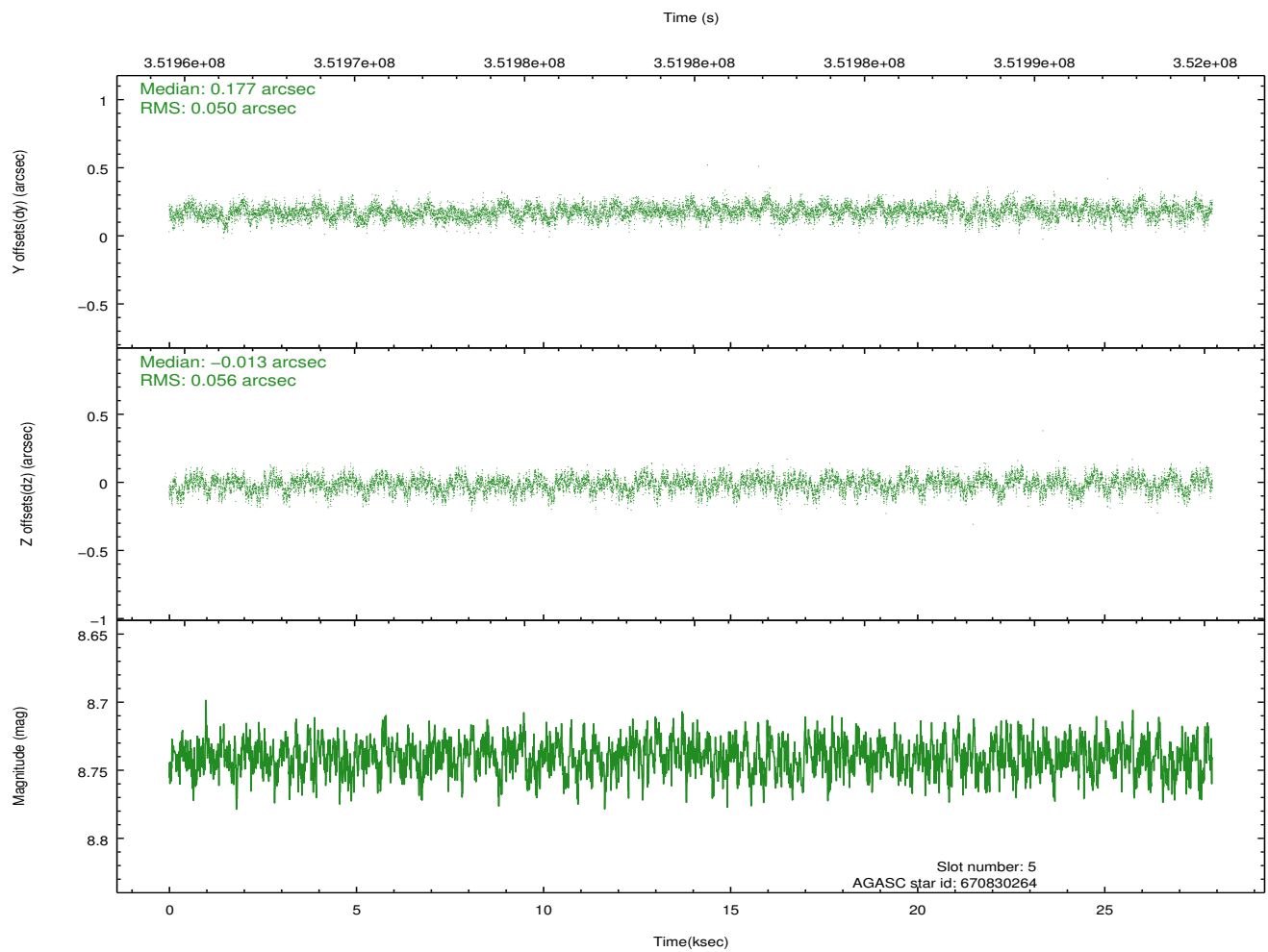
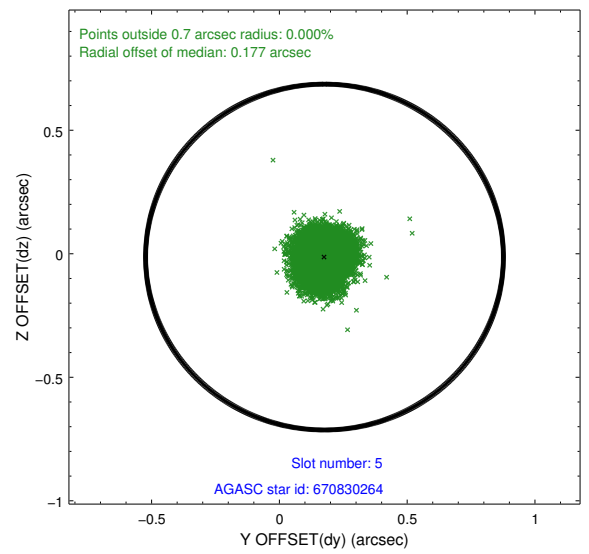
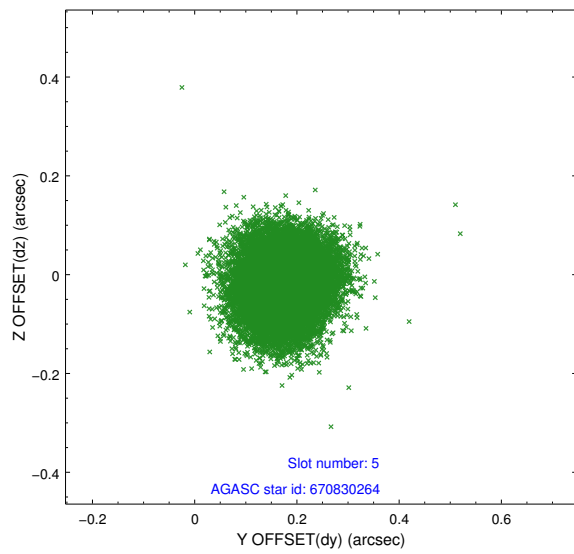
2.4.1 Slot 3



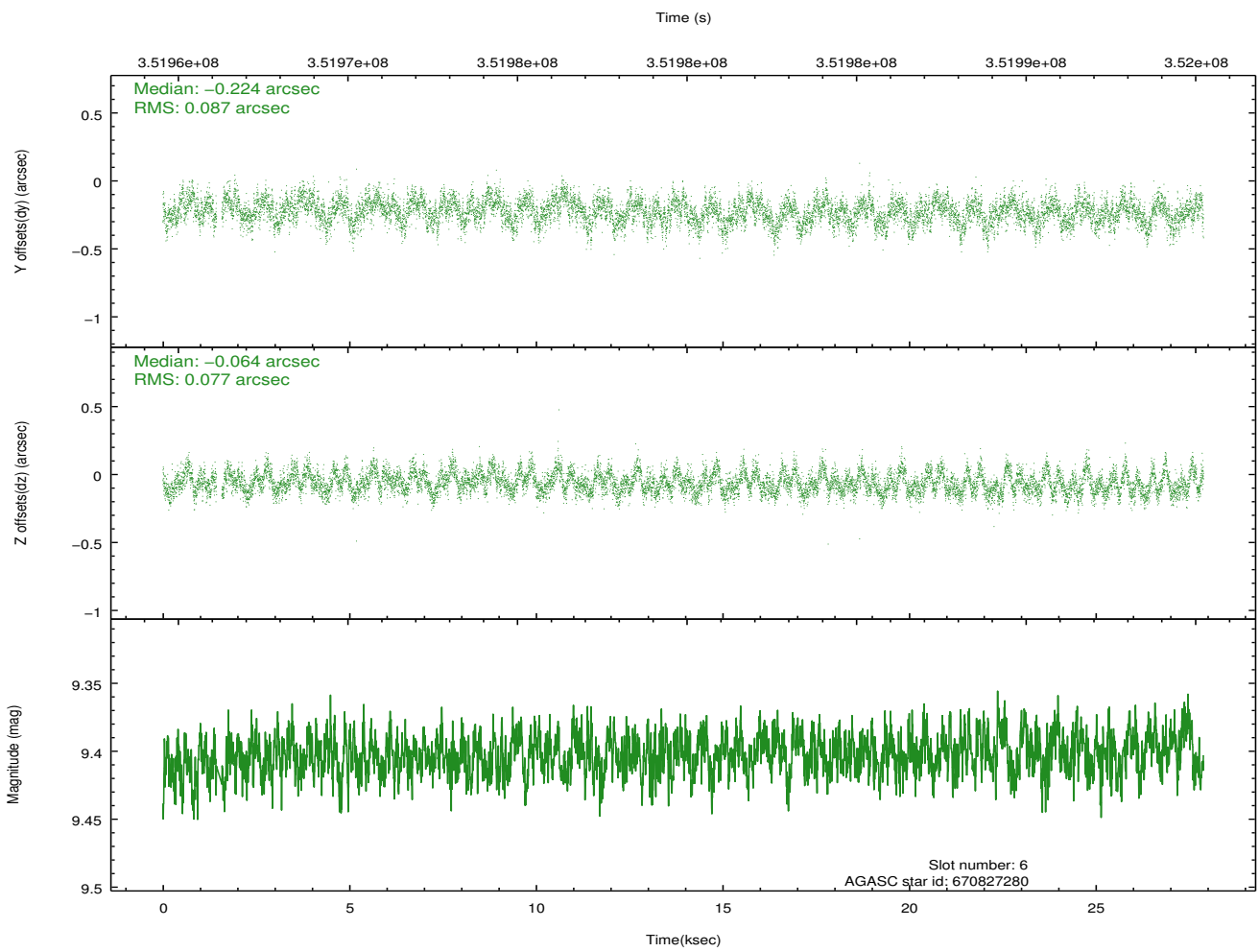
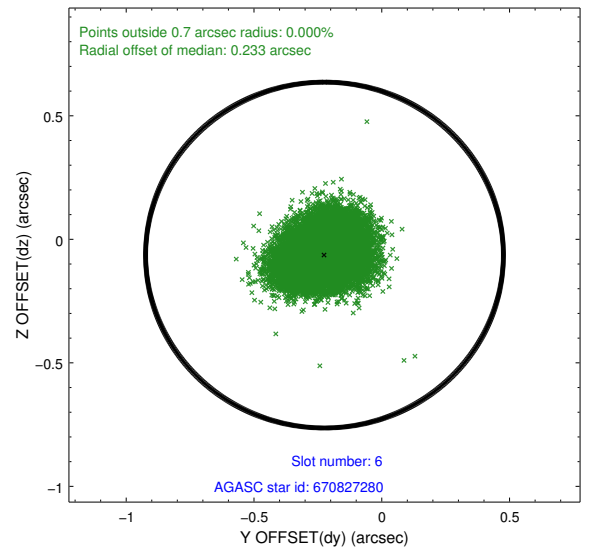
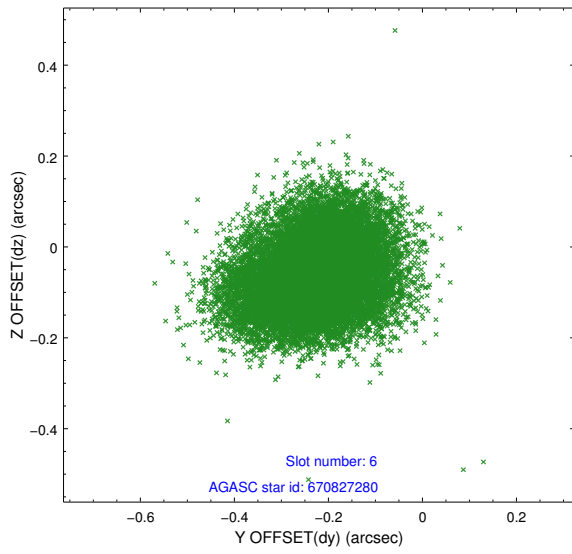
2.4.2 Slot 4



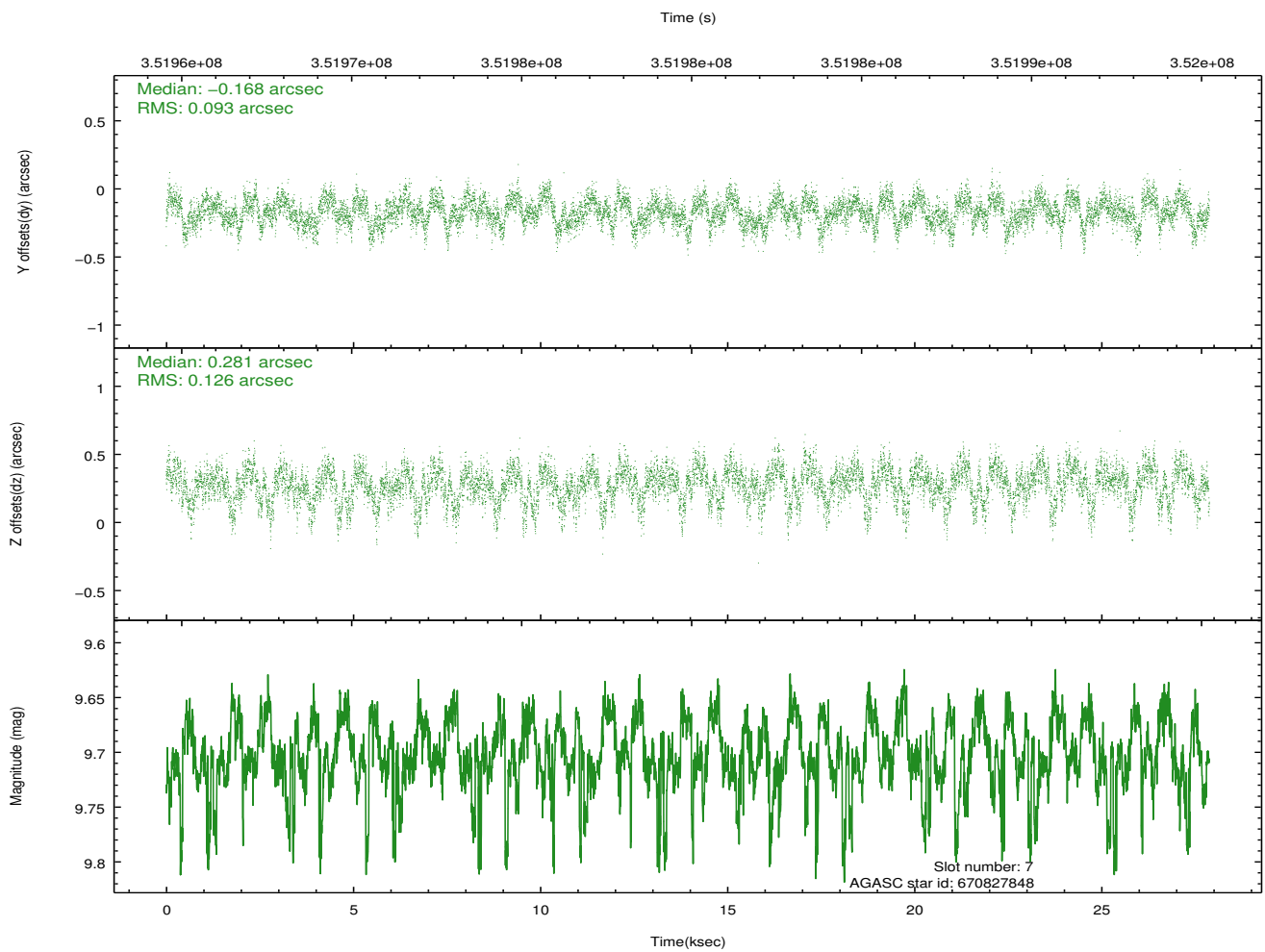
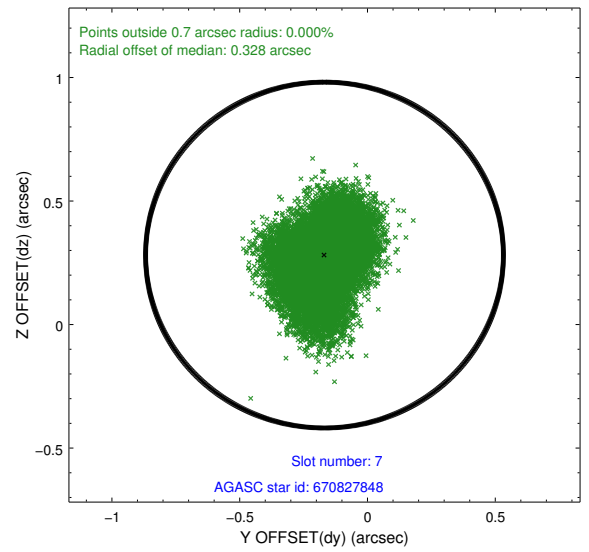
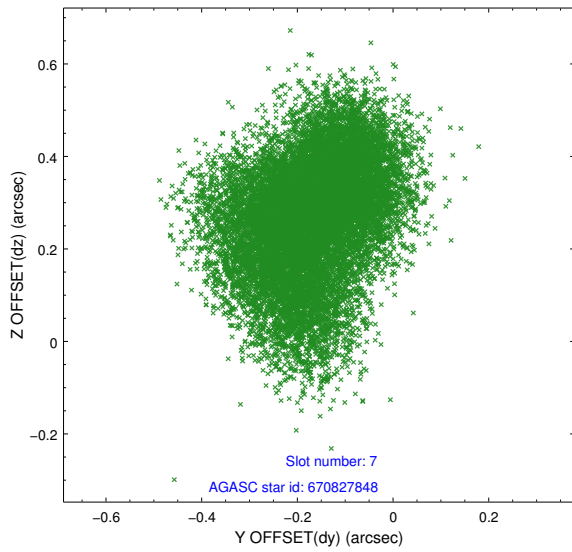
2.4.3 Slot 5



2.4.4 Slot 6

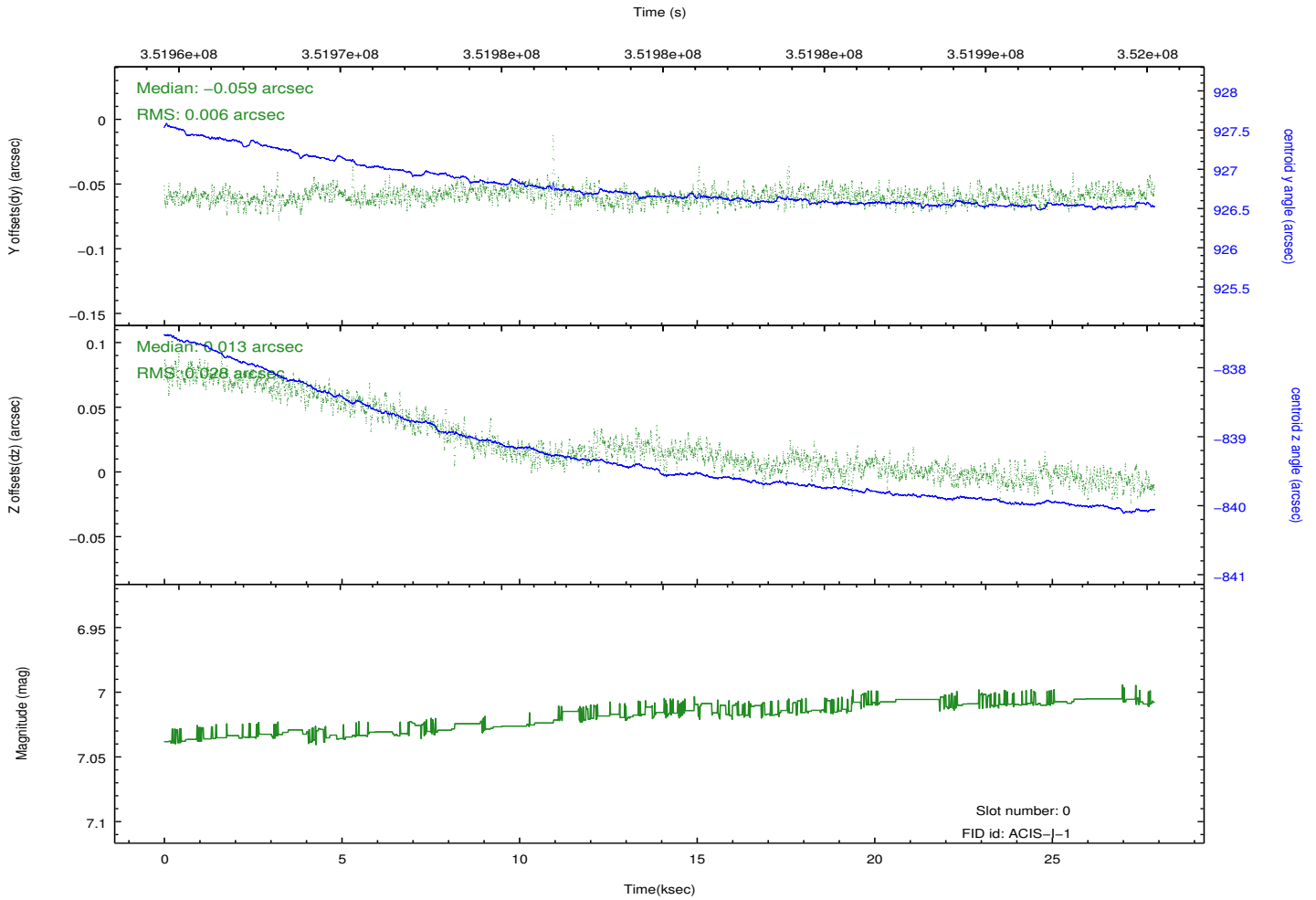
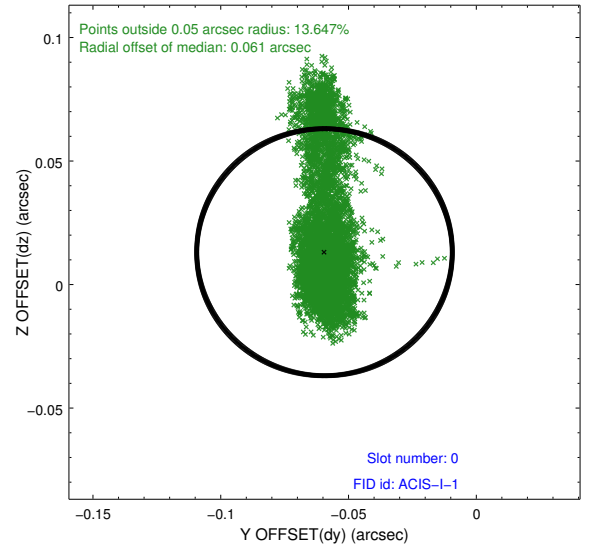
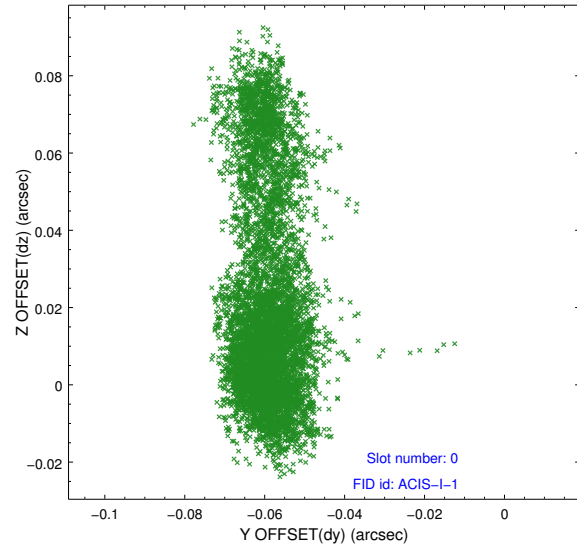


2.4.5 Slot 7

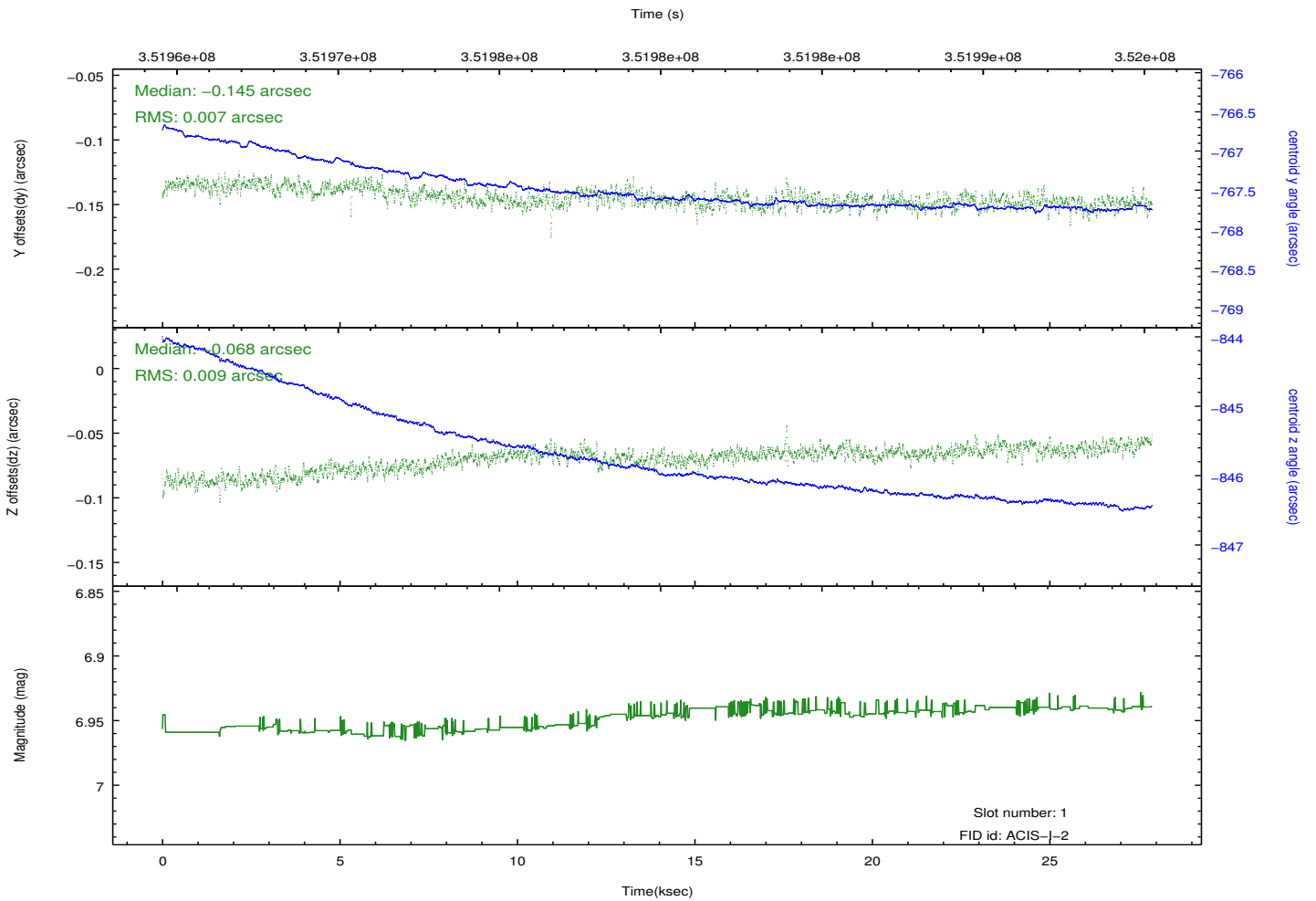
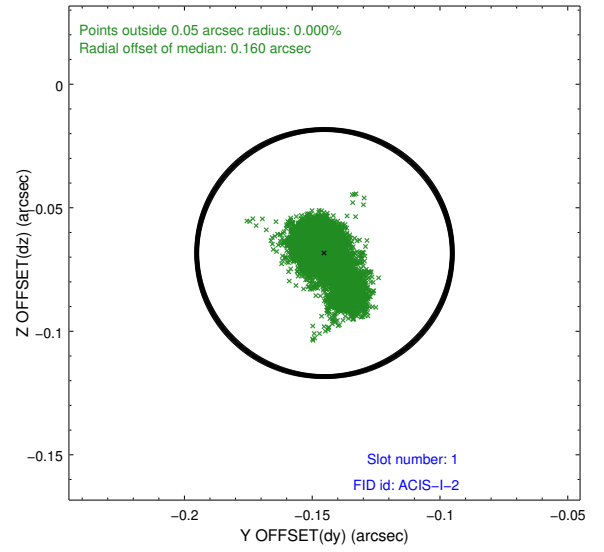
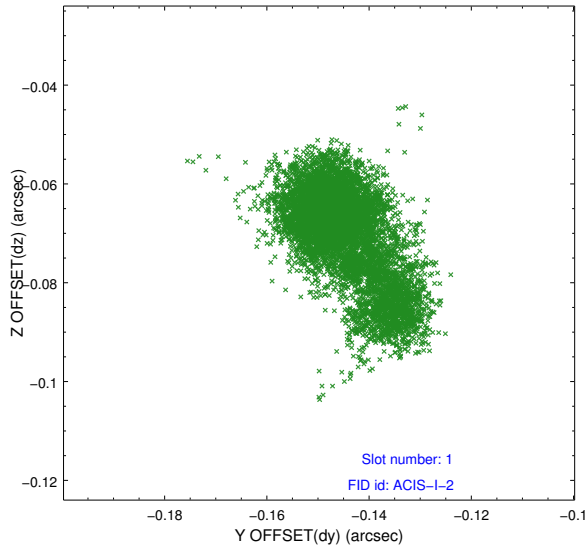


2.5 FID Slots

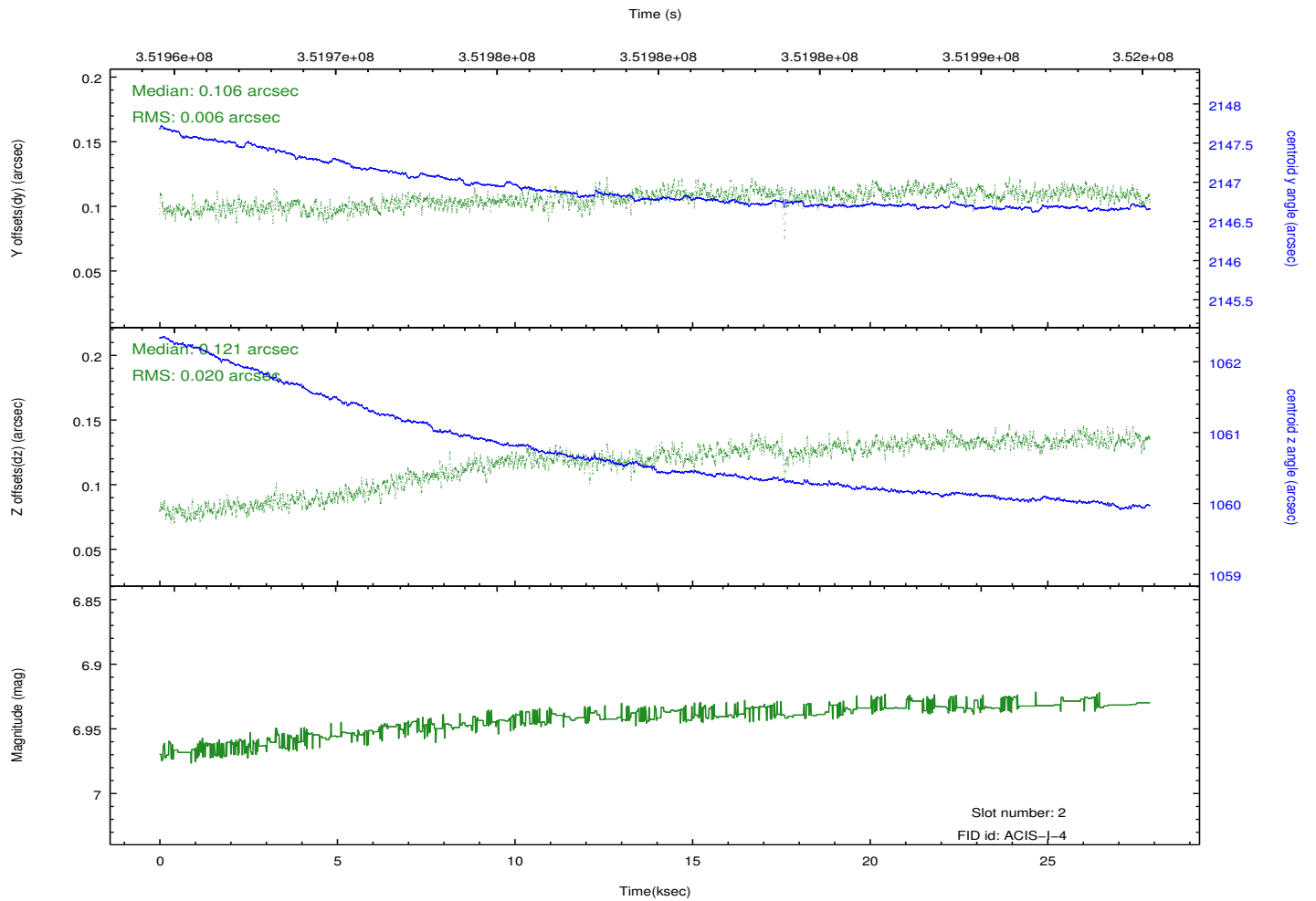
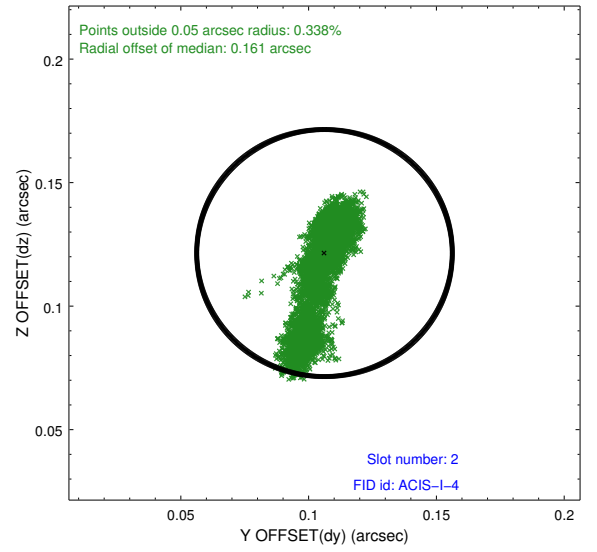
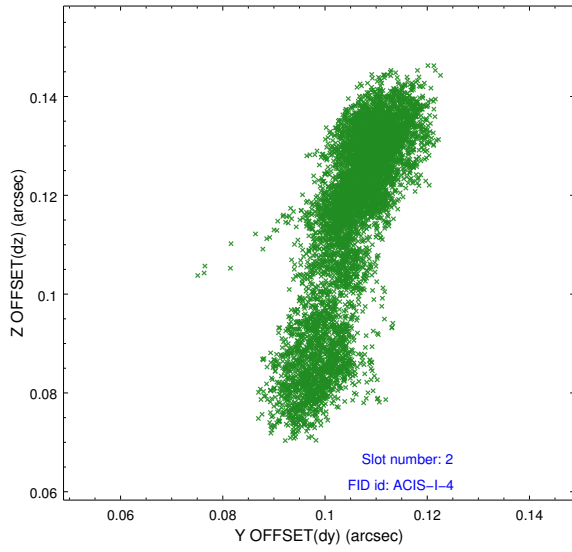
2.5.1 Slot 0



2.5.2 Slot 1



2.5.3 Slot 2



A Summary

A.1 Status

V&V Scientist	Joy Nichols
V&V Date (YYYY-MM-DD)	2012.06.06
V&V Edition	1
V&V Disposition and Status	OK
V&V Charge Time	27.8751589

A.2 Comments