

V&V Reference Report

L2 ASCDS Version : 8.4.5

Observation 10701 - L2 Version 4
Chandra X-Ray Center

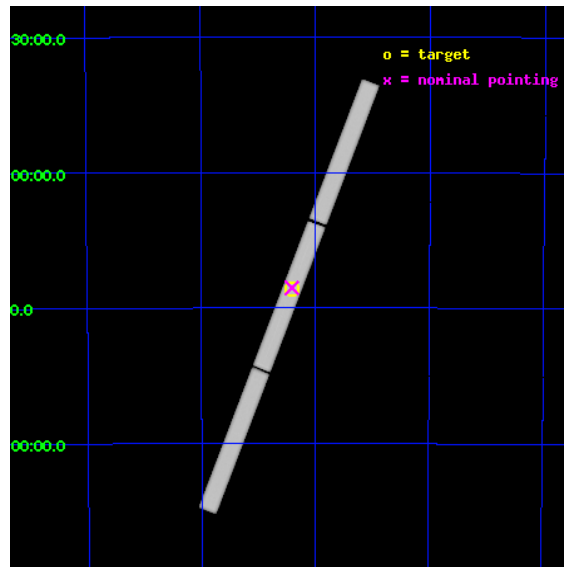
L2 Processing Date : Aug 13 2012

Contents

1	Front	2
2	OBI	3
2.1	OBI	3
2.1.1	Images	3
2.1.2	Parameters	4
2.1.3	Events	4
2.2	Compared Parameters	5
2.3	Aspect	6
2.4	Star Slots	9
2.4.1	Slot 3	9
2.4.2	Slot 4	10
2.4.3	Slot 5	11
2.4.4	Slot 6	12
2.4.5	Slot 7	13
2.5	FID Slots	14
2.5.1	Slot 0	14
2.5.2	Slot 1	15
3	Gratings	16
3.1	LETG Arm	16
A	Summary	18
A.1	Status	18
A.2	Comments	18

1 Front

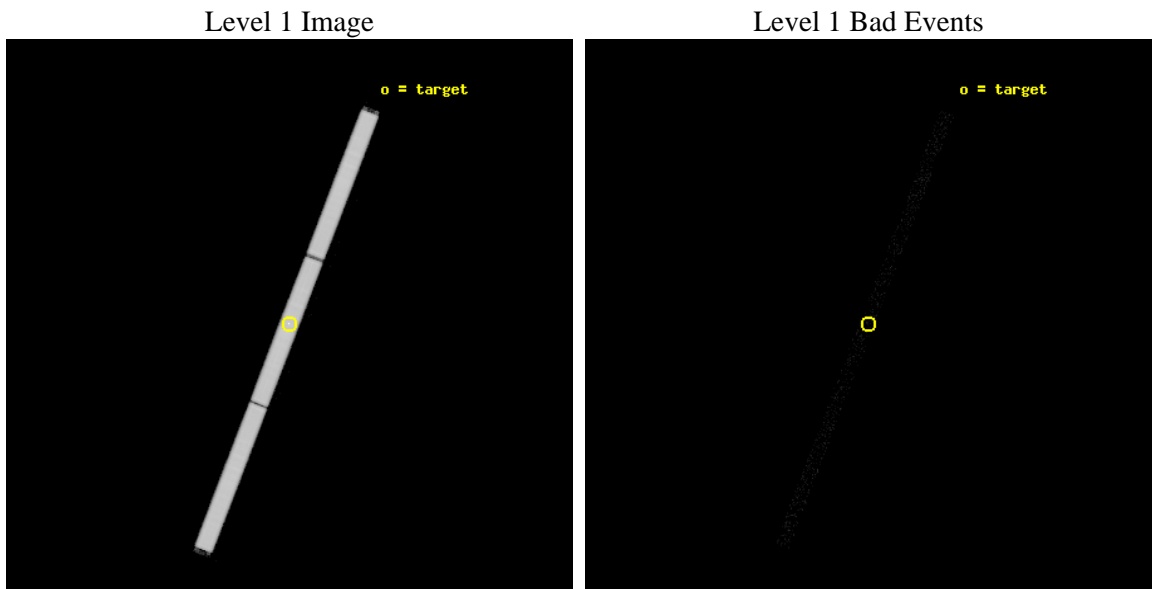
seq_num	501157	Sequence number
obs_id	10701	Observation id
title	Monitoring the spectral evolution of RXJ0720-3125 and determining its nature	Proposal title
observer	Dr Jelle Kaastra	Principal investigator
object	RX J0720-3125	Source name
ra_targ	110.104167	Observer's specified target RA [deg]
dec_targ	-31.430611	Observer's specified target Dec [deg]
ra_nom	110.10223463441	Nominal RA [deg]
dec_nom	-31.426085683104	Nominal Dec [deg]
roll_nom	111.05201606026	Nominal Roll [deg]
revision	4	Processing version of data
ontime	33174.382914603	[s]
livetime	32809.55778933	Overtime multiplied by DTCOR
l2events	3098176	Number of level 2 events



2 OBI

2.1 OBI

2.1.1 Images



2.1.2 Parameters

obi_num	0	Obi number	sched_exp_time	33000.000000	[s] Scheduled observation exposure time
ascdsver	8.4.5	Processing system revision	ontime	33174.382914603	[s]
caldbver	4.5.1.1	 	l1events	4109627	Number of level 1 events
date	2012-08-13T10:47:26	Date and time of file creation			
revision	4	Processing version of data			

2.1.3 Events

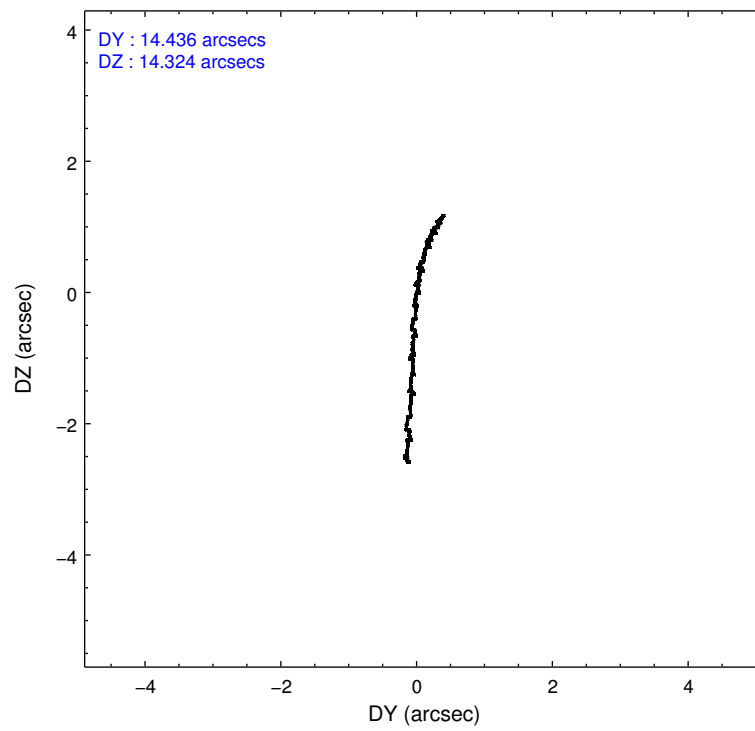
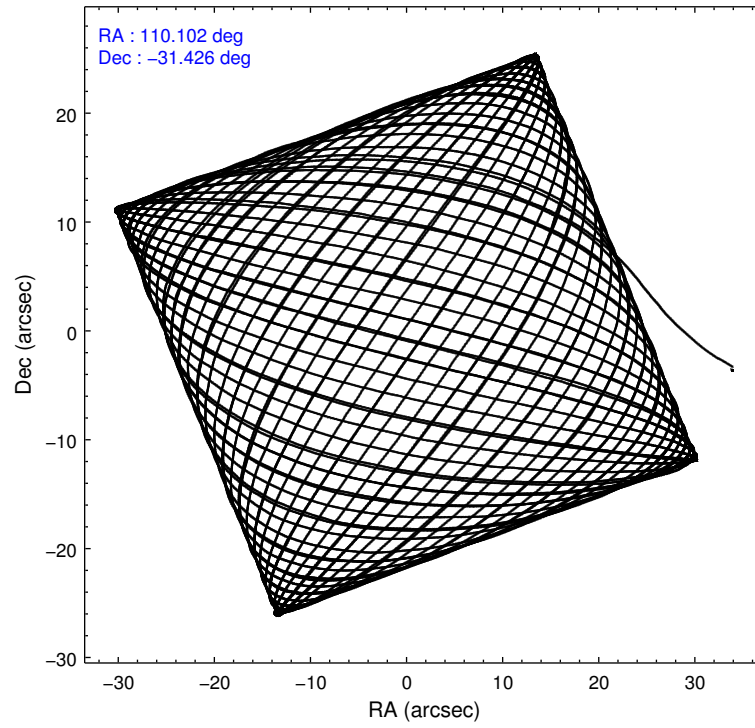
Level 1 Events

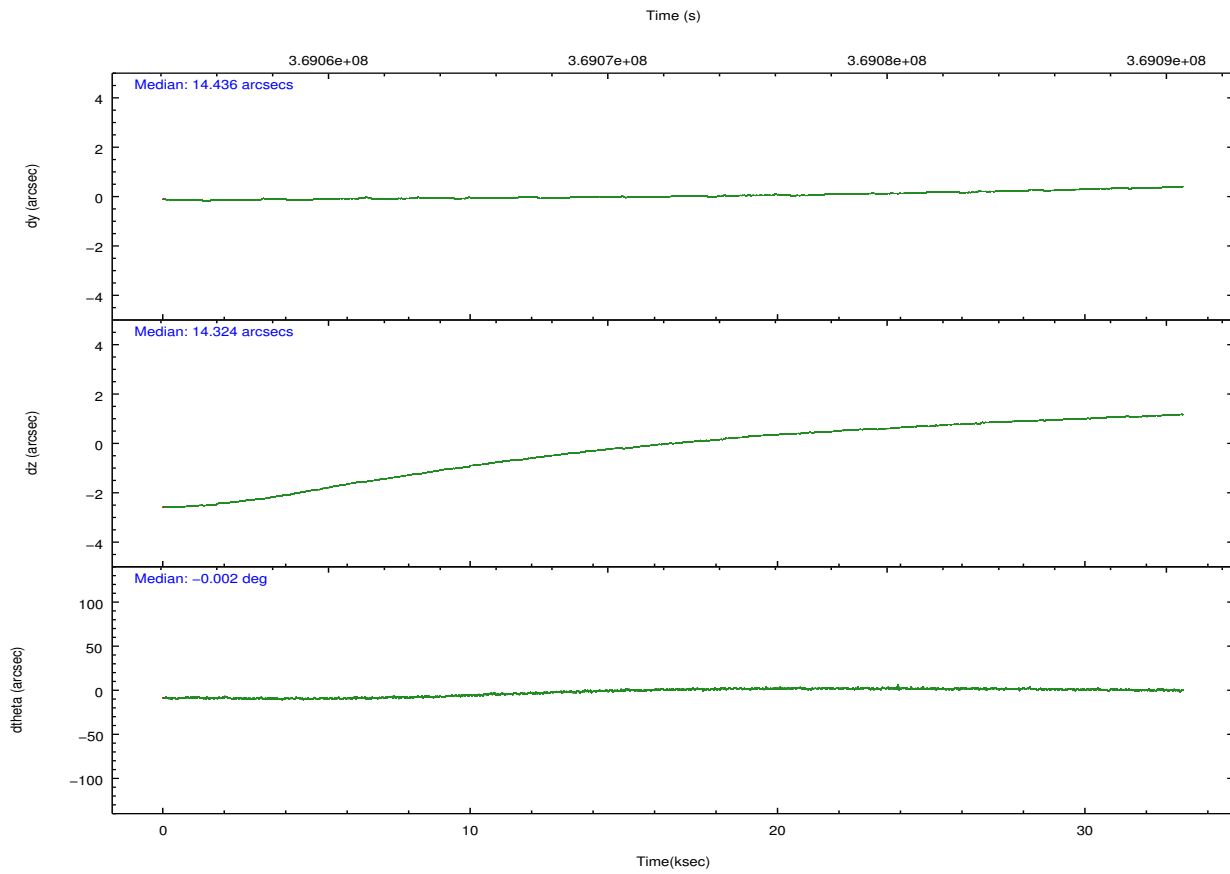
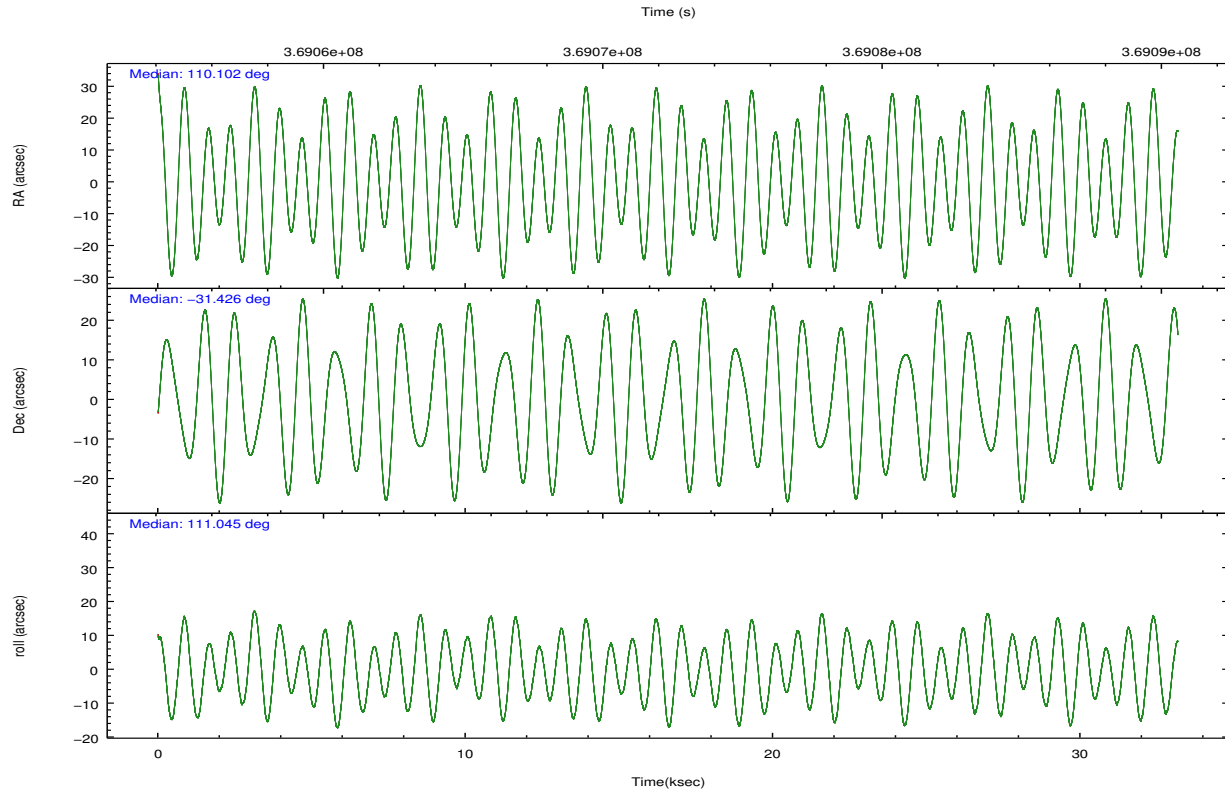
	segment 1	segment 2	segment 3
level 1 events	1366626	1368314	1374687
rejected events	39232	38394	38645
rejected %	2%	2%	2%

2.2 Compared Parameters

Parameter	Planned	Actual	Parameter	Planned	Actual
Instrument	HRC	HRC	Obspar format version number	7	7
Detector	HRC-S	HRC-S	Obspar file type	PREDICTED	ACTUAL
Grating	LETG	LETG	Obspar update status	NONE	UPDATED
Data mode	OBSERVING	OBSERVING			
Observation mode	POINTING	POINTING			
[deg] Pointing RA	110.129435	110.1022346344115			
[deg] Pointing Dec	-31.443051	-31.42608568310383			
[deg] Pointing Roll	110.998871	111.0520160602582			
[mm] SIM focus pos	-1.429586	-1.428180813131781			
[mm] SIM defocus	0.1037507710433287	0.1051558262725154			
[mm] SIM translation stage pos	250.455976	250.466033080201			
[mm] SIM translation stage offset	0	-0.01005468664627074			
[s] Observation start time (MET)	369055933.184000	369054815.9887			
Observation start date	2009-09-11T11:31:07	2009-09-11T11:13:35			
[s] Observation end time (MET)	369088933.184000	369089873.04046			
Observation end date	2009-09-11T20:41:07	2009-09-11T20:57:53			

2.3 Aspect



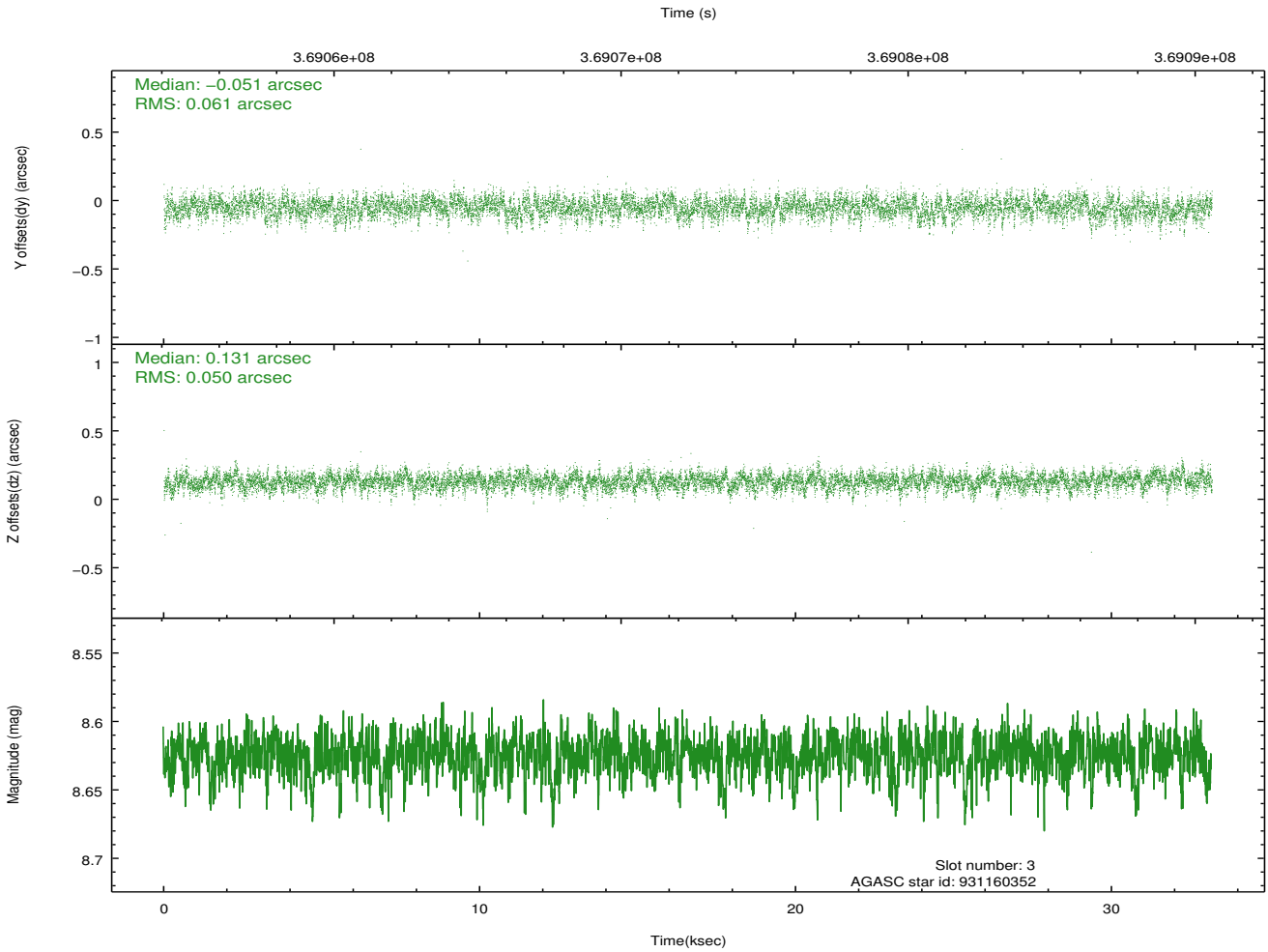
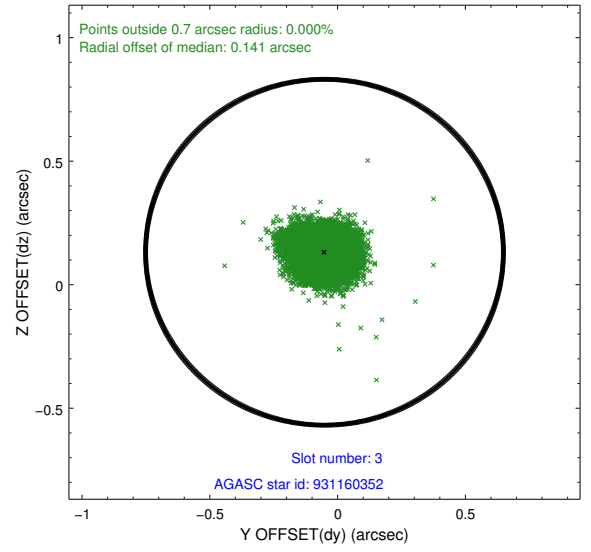
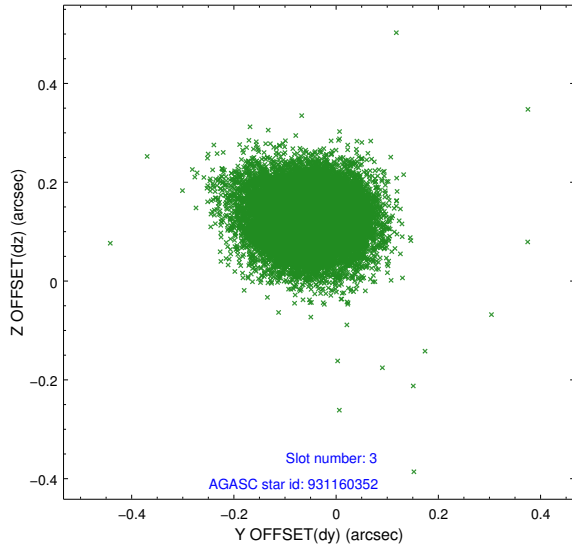


Slot Statistics

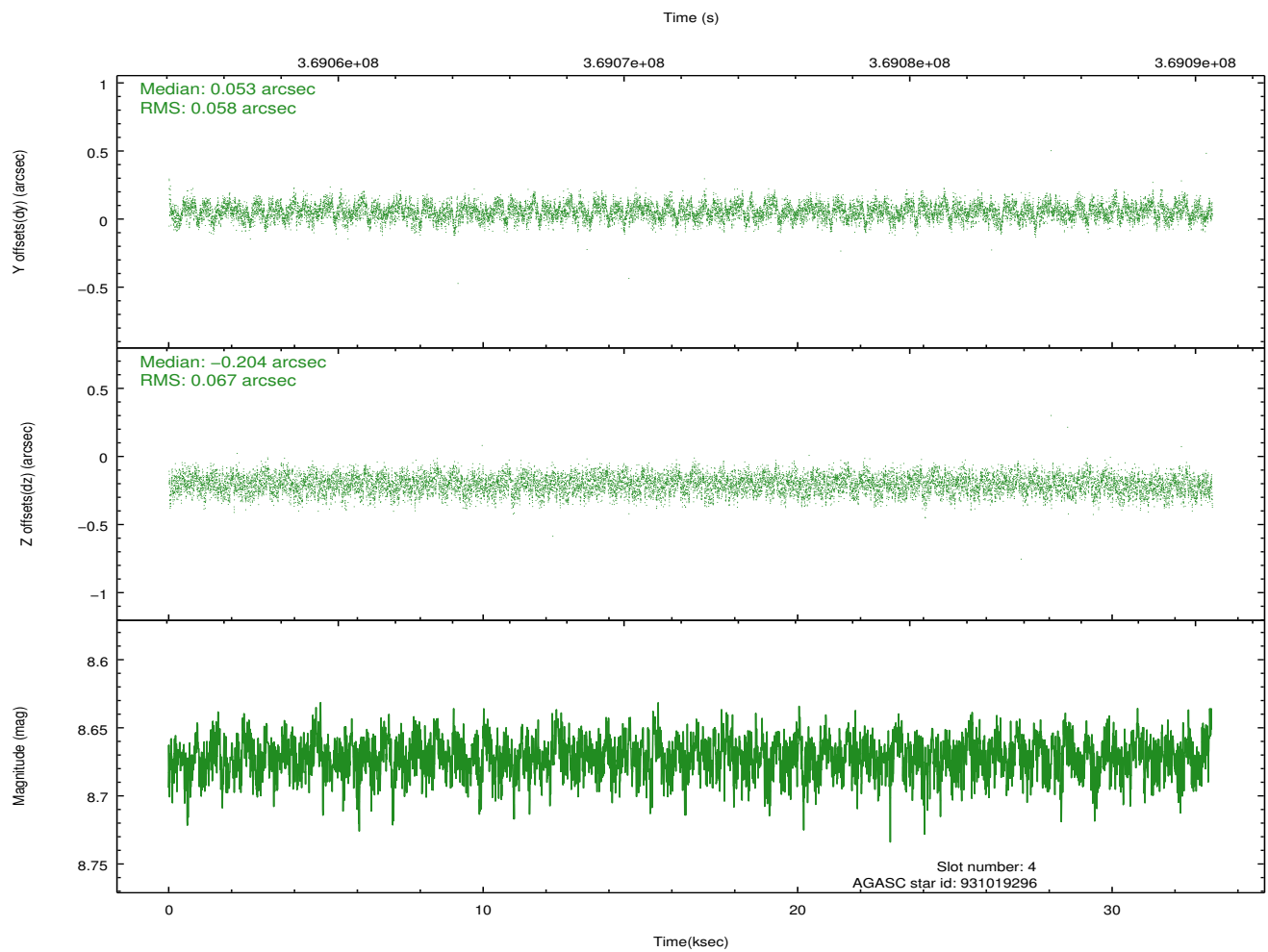
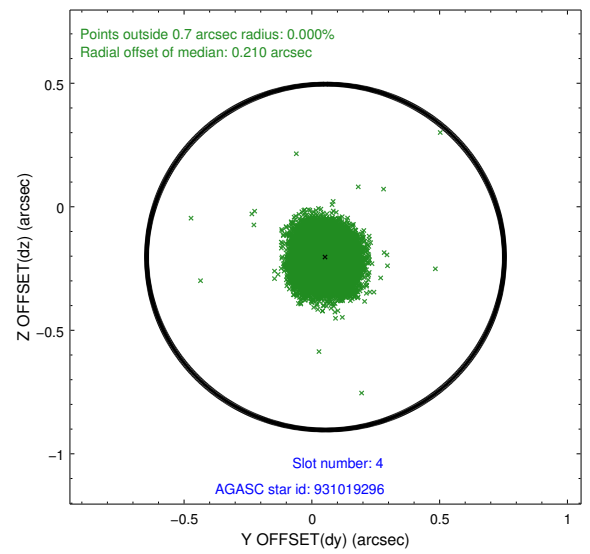
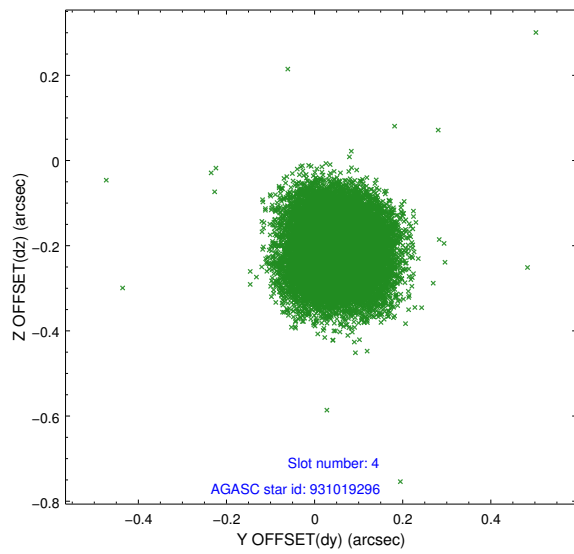
slot	status	id	mag	n_pts	med_dy	med_dz	dr1	dr2	ra	dec	mean_y	mean_z
0	FID	HRC-S-2	6.95	8092	0.195	-0.125	0.010	0.017	0.000000	0.000000	1230.91	-455.46
1	FID	HRC-S-3	6.98	8089	0.071	-0.073	0.010	0.017	0.000000	0.000000	-1171.45	566.73
2	OMITTED		0.00	0	0.000	0.000	0.000	0.000	0.000000	0.000000	0.00	0.00
3	GUIDE	931160352	8.62	16175	-0.051	0.131	0.083	0.136	110.268138	-30.864891	1789.63	-1145.36
4	GUIDE	931019296	8.67	16174	0.053	-0.204	0.096	0.148	109.471771	-31.694370	-128.99	2207.43
5	GUIDE	931025288	8.44	16179	-0.037	-0.037	0.073	0.120	109.511084	-30.937793	2377.16	1133.28
6	GUIDE	931163512	8.46	16171	0.002	0.165	0.092	0.147	110.894384	-31.299941	-369.46	-2378.08
7	GUIDE	931533624	8.84	16174	0.036	-0.054	0.087	0.140	109.647585	-32.151630	-1858.58	2286.19

2.4 Star Slots

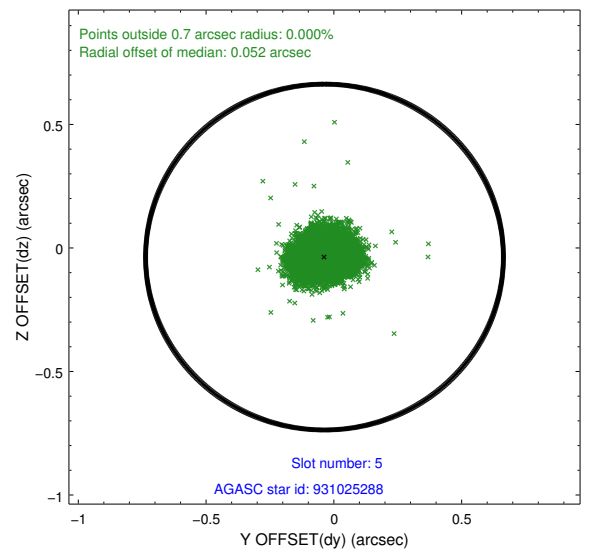
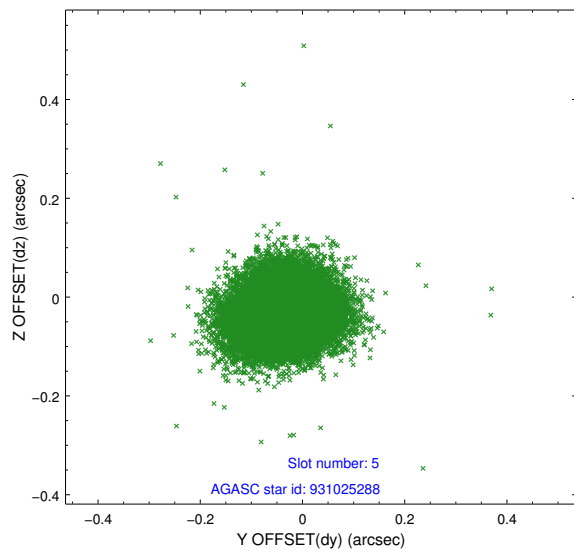
2.4.1 Slot 3



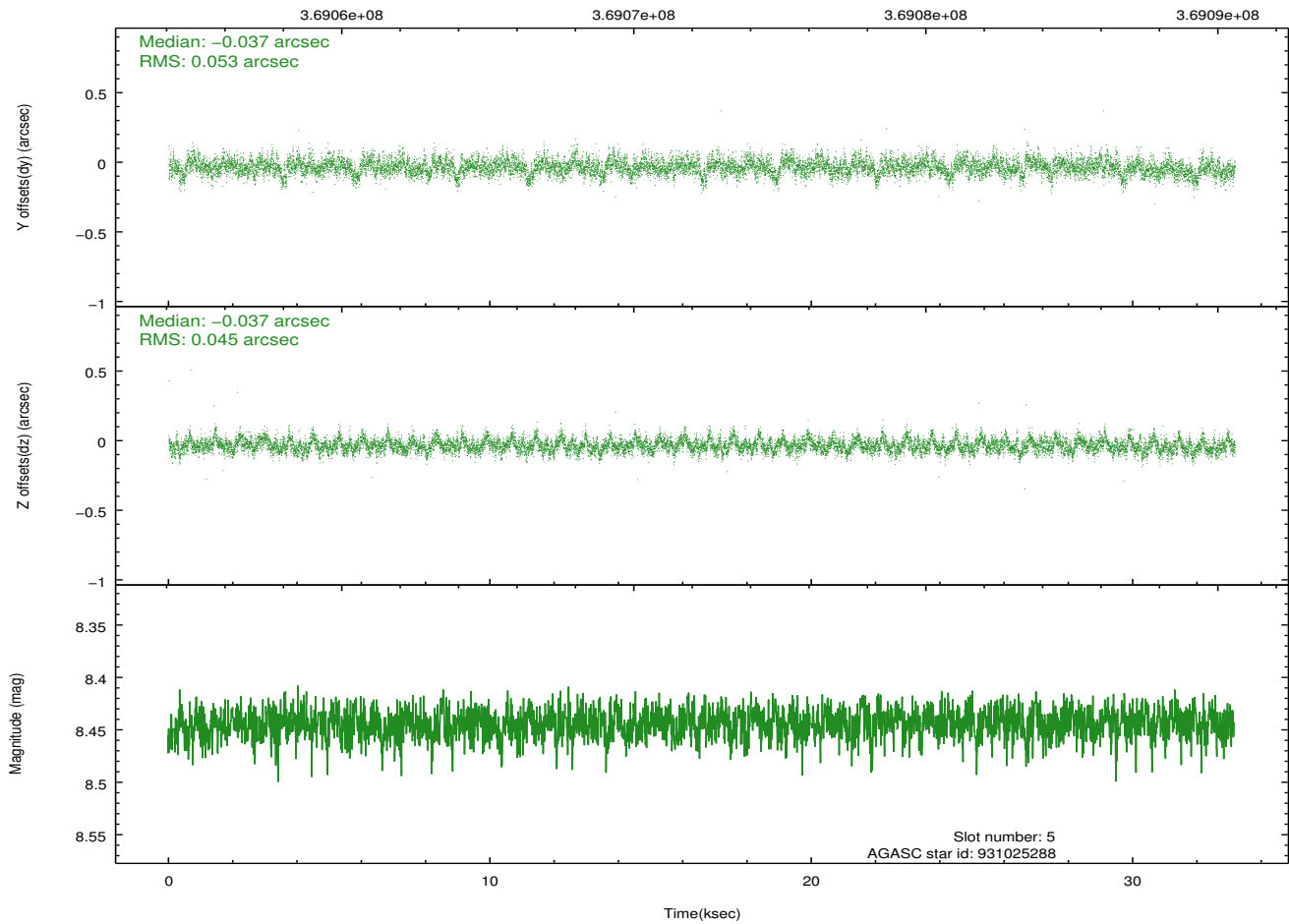
2.4.2 Slot 4



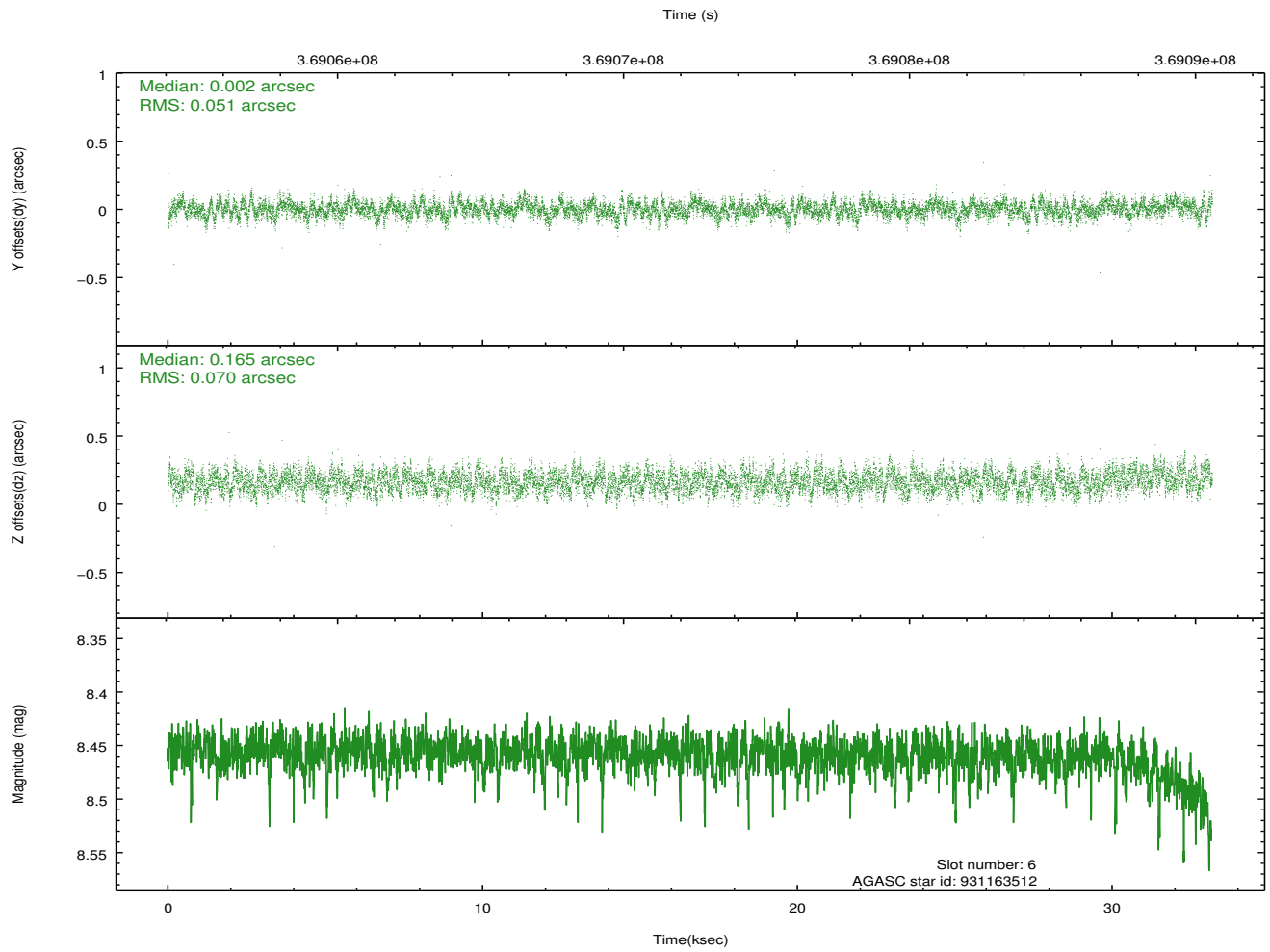
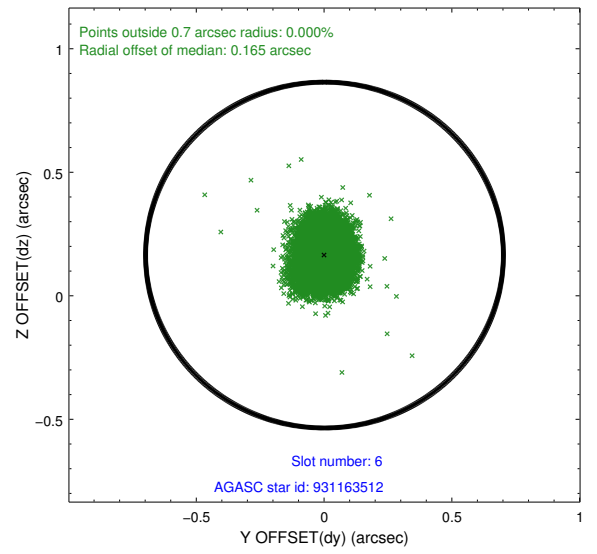
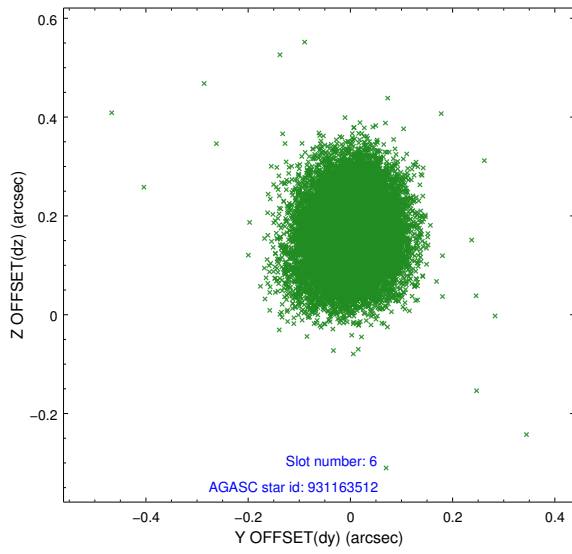
2.4.3 Slot 5



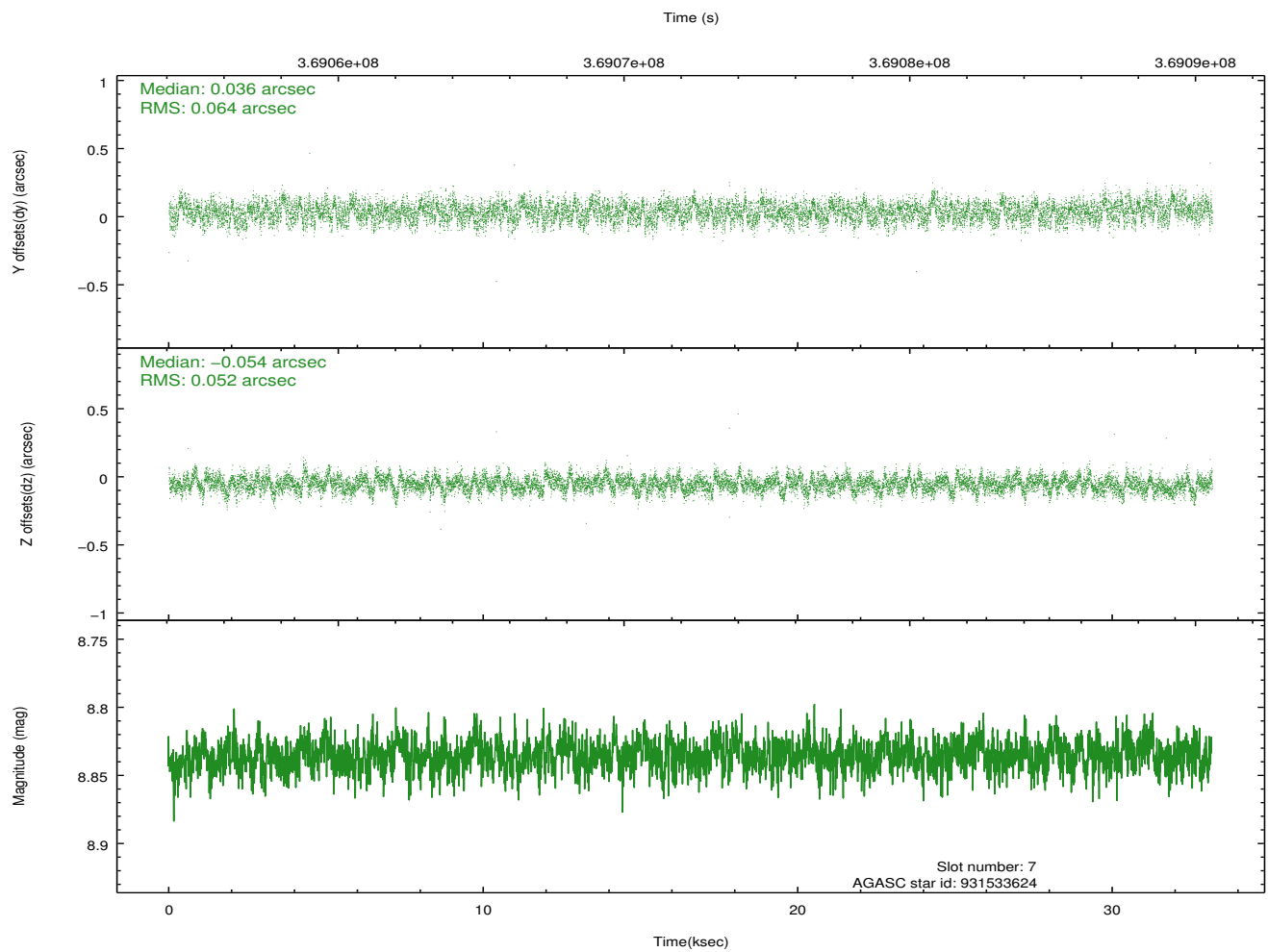
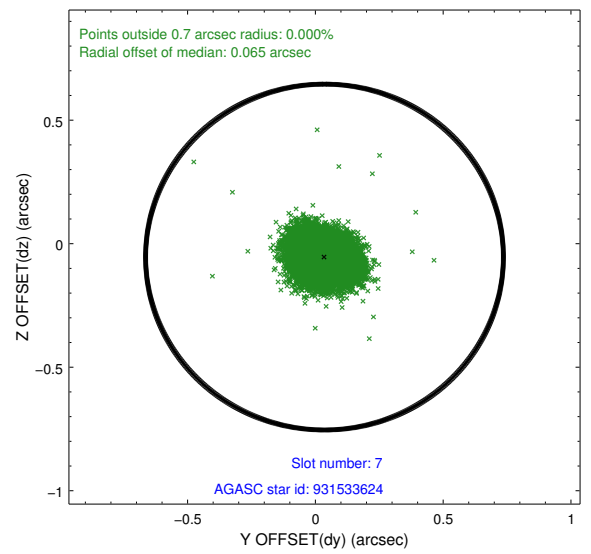
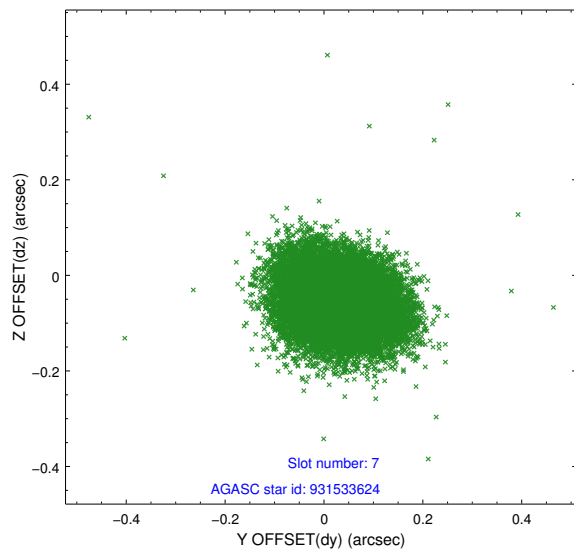
Time (s)



2.4.4 Slot 6

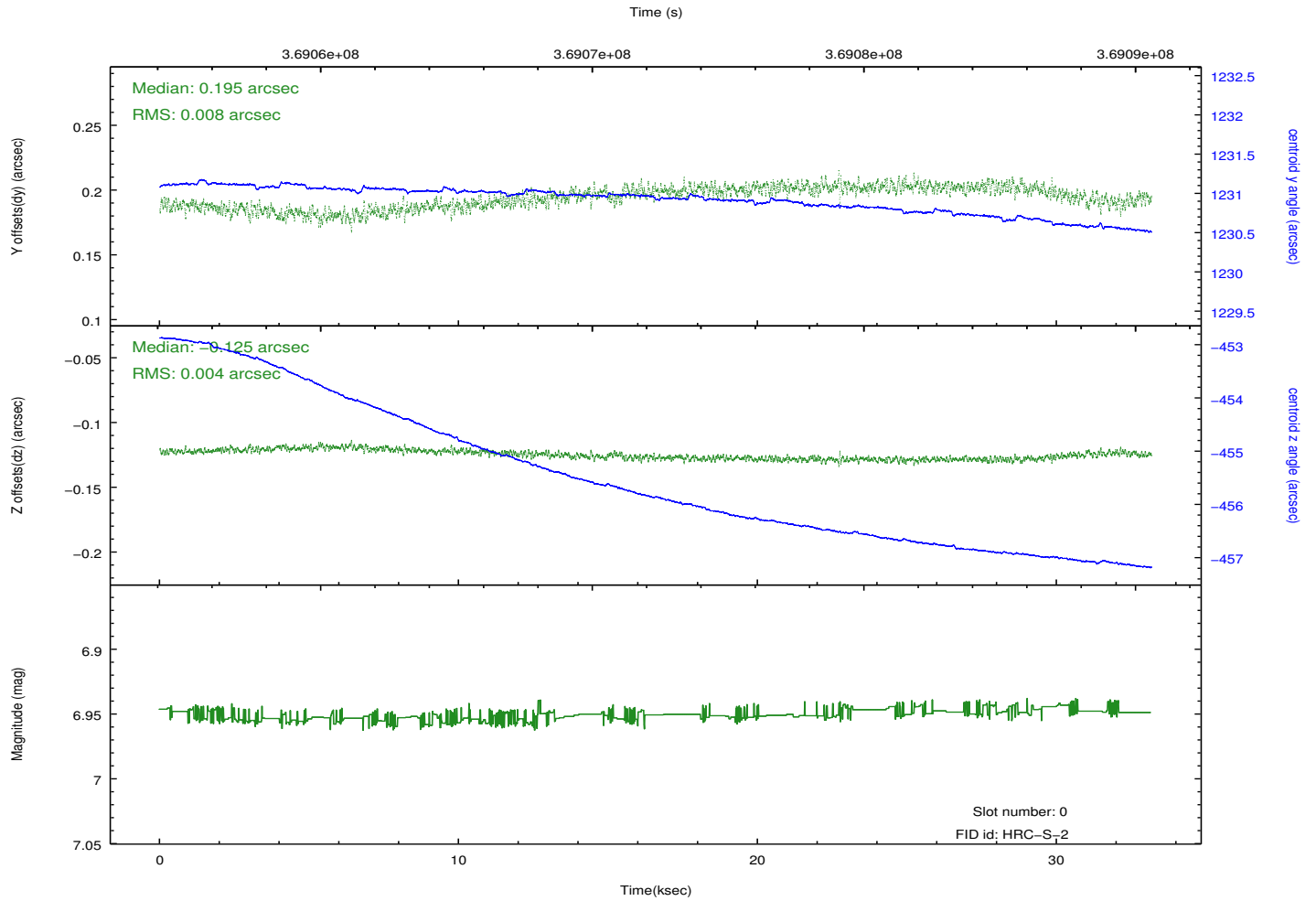
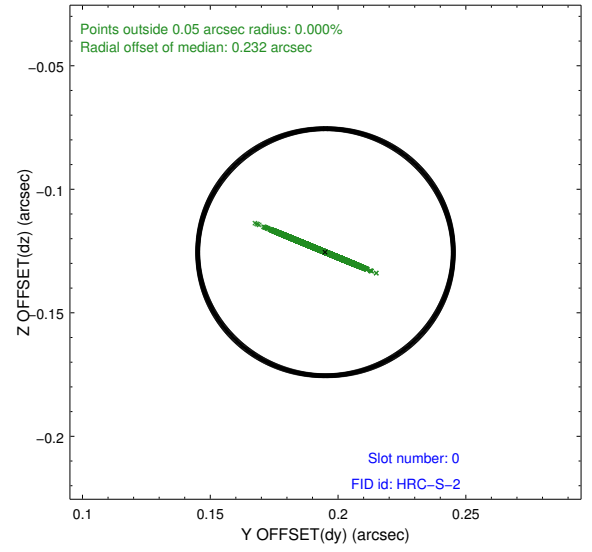
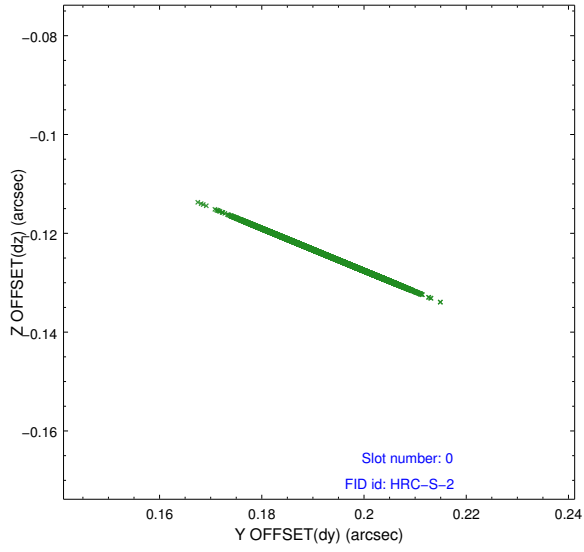


2.4.5 Slot 7

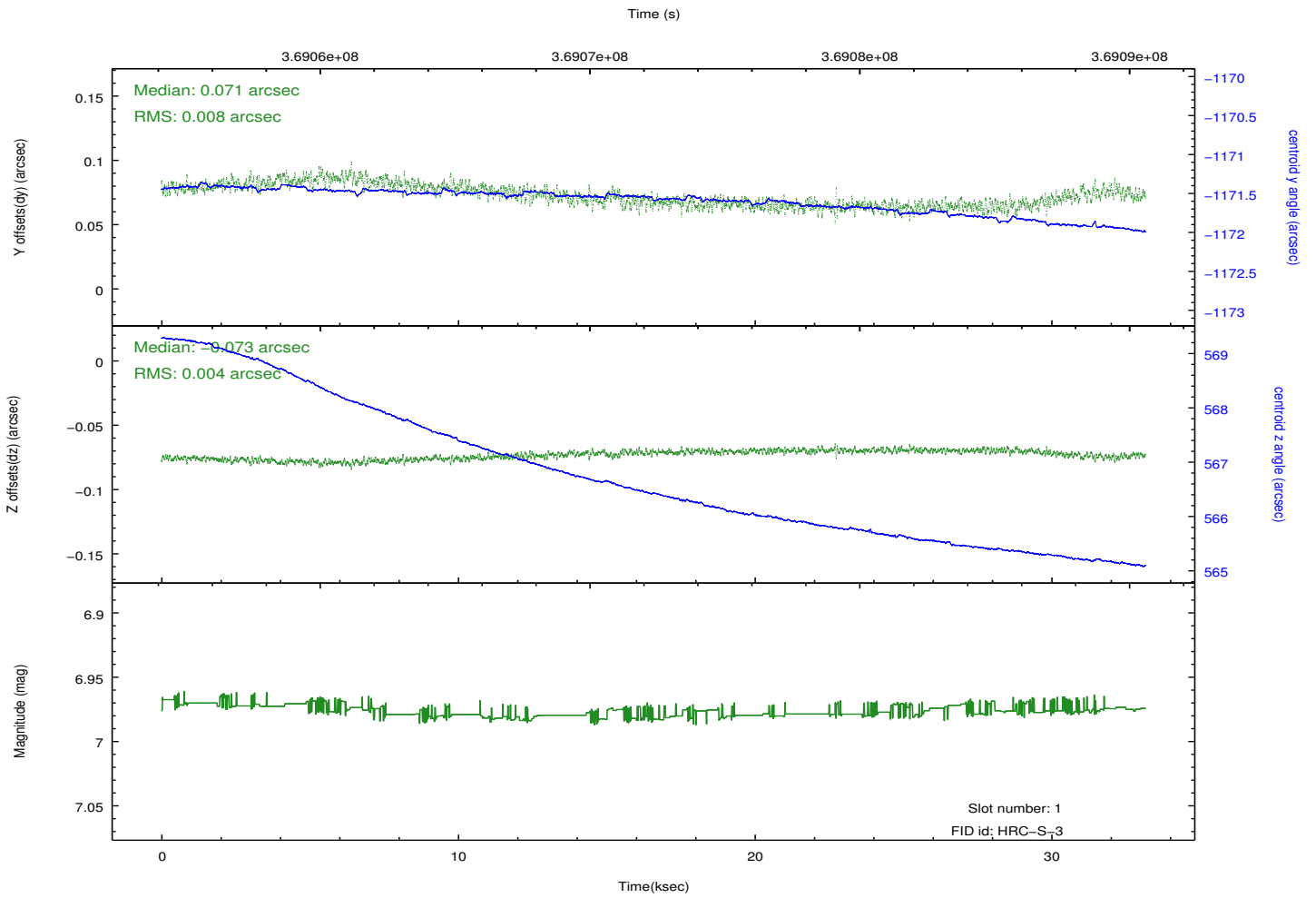
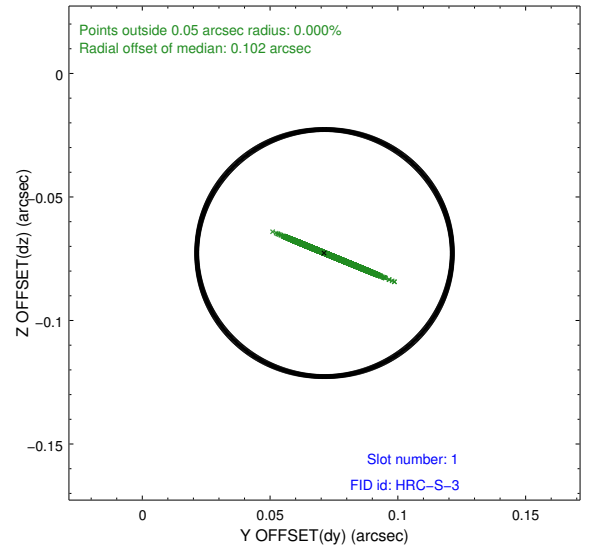
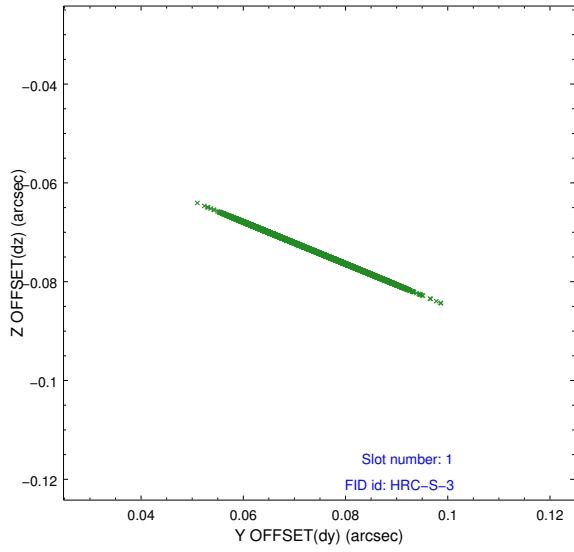


2.5 FID Slots

2.5.1 Slot 0

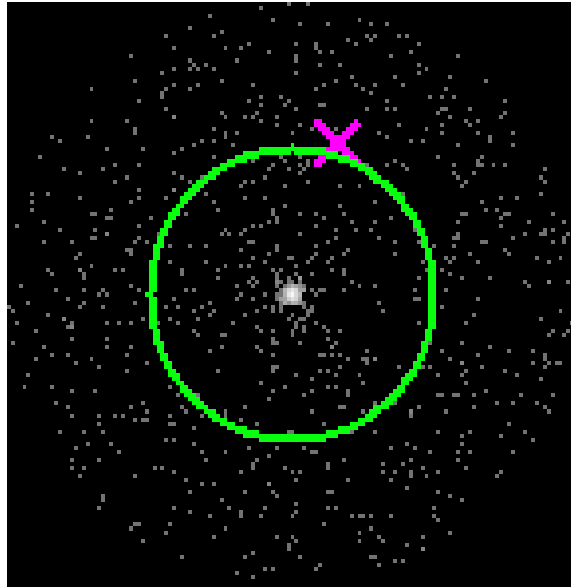


2.5.2 Slot 1

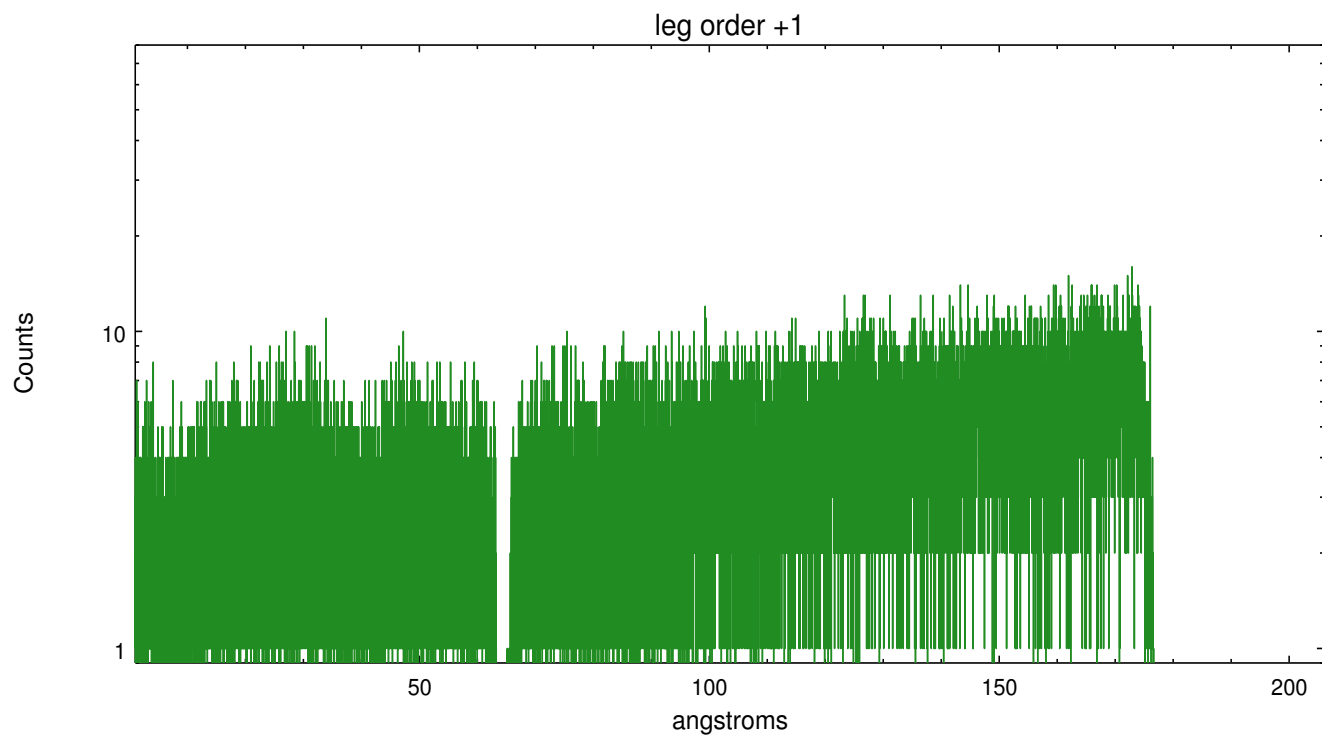
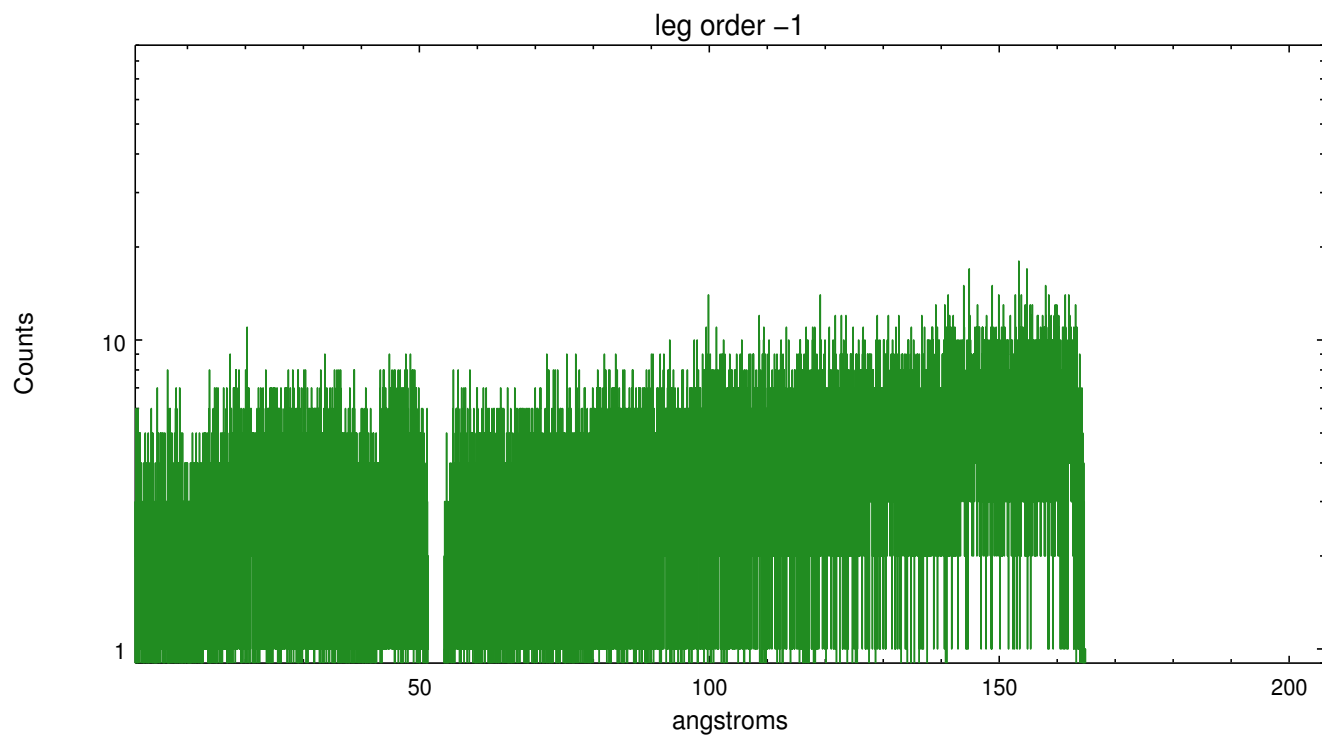


3 Gratings

3.1 LETG Arm



LETG Zero Order



A Summary

A.1 Status

V&V Scientist	Joy Nichols
V&V Date (YYYY-MM-DD)	2012.08.21
V&V Edition	1
V&V Disposition and Status	OK
V&V Charge Time	33.174382918298

A.2 Comments

The fid light in slot 2 was removed from the aspect solution due to poor data quality. The aspect solution is improved by the removal of this fid light from the solution.