

V&V Reference Report

L2 ASCDS Version : 8.4.4

Observation 10721 - L2 Version 2
Chandra X-Ray Center

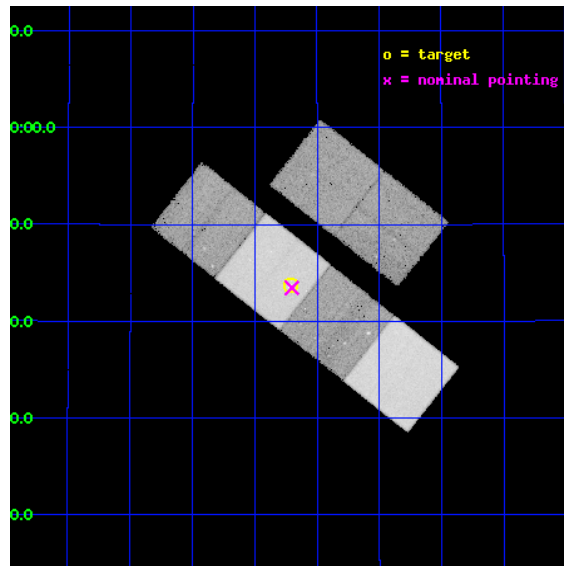
L2 Processing Date : May 31 2012

Contents

1	Front	2
2	OBI	3
2.1	OBI	3
2.1.1	Images	3
2.1.2	Bias	3
2.1.3	Parameters	4
2.1.4	Events	4
2.2	Compared Parameters	5
2.3	Aspect	6
2.4	Star Slots	9
2.4.1	Slot 3	9
2.4.2	Slot 4	10
2.4.3	Slot 5	11
2.4.4	Slot 6	12
2.4.5	Slot 7	13
2.5	FID Slots	14
2.5.1	Slot 0	14
2.5.2	Slot 1	15
2.5.3	Slot 2	16
A	Summary	17
A.1	Status	17
A.2	Comments	17

1 Front

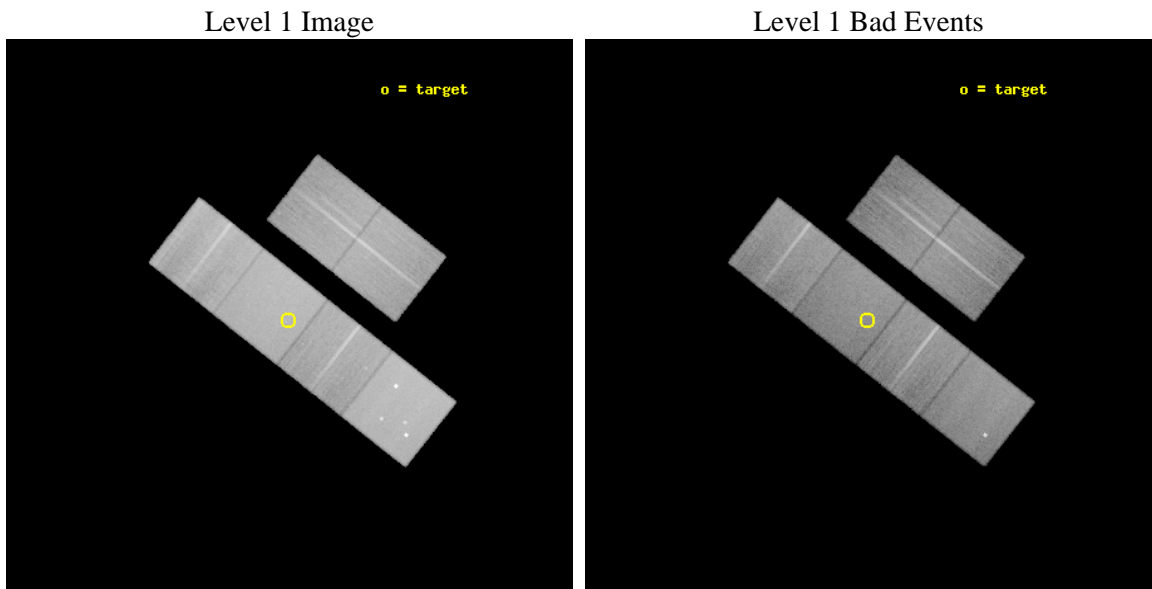
seq_num	701951	Sequence number
obs_id	10721	Observation id
title	X-ray spectroscopy of a recoiling SMBH candidate	Proposal title
observer	Dr. Peter Predehl	Principal investigator
object	J0927+2943	Source name
dtycycle	0	
cycle	P	events from which exps? Prim/Second/Both
ra_targ	141.8025	Observer's specified target RA [deg]
dec_targ	29.728889	Observer's specified target Dec [deg]
ra_nom	141.80057881473	Nominal RA [deg]
dec_nom	29.724350799681	Nominal Dec [deg]
roll_nom	218.20882270773	Nominal Roll [deg]
revision	2	Processing version of data
ontime	27000.601441741	Sum of GTIs [s]
livetime	26658.703568475	Livetime [s]
ontime2	27000.642481744	Sum of GTIs [s]
ontime3	27000.478321731	Sum of GTIs [s]
ontime5	27000.560401738	Sum of GTIs [s]
ontime6	27000.519361734	Sum of GTIs [s]
ontime7	27000.601441741	Sum of GTIs [s]
ontime8	27000.437281728	Sum of GTIs [s]
l2events	461130	Number of level 2 events



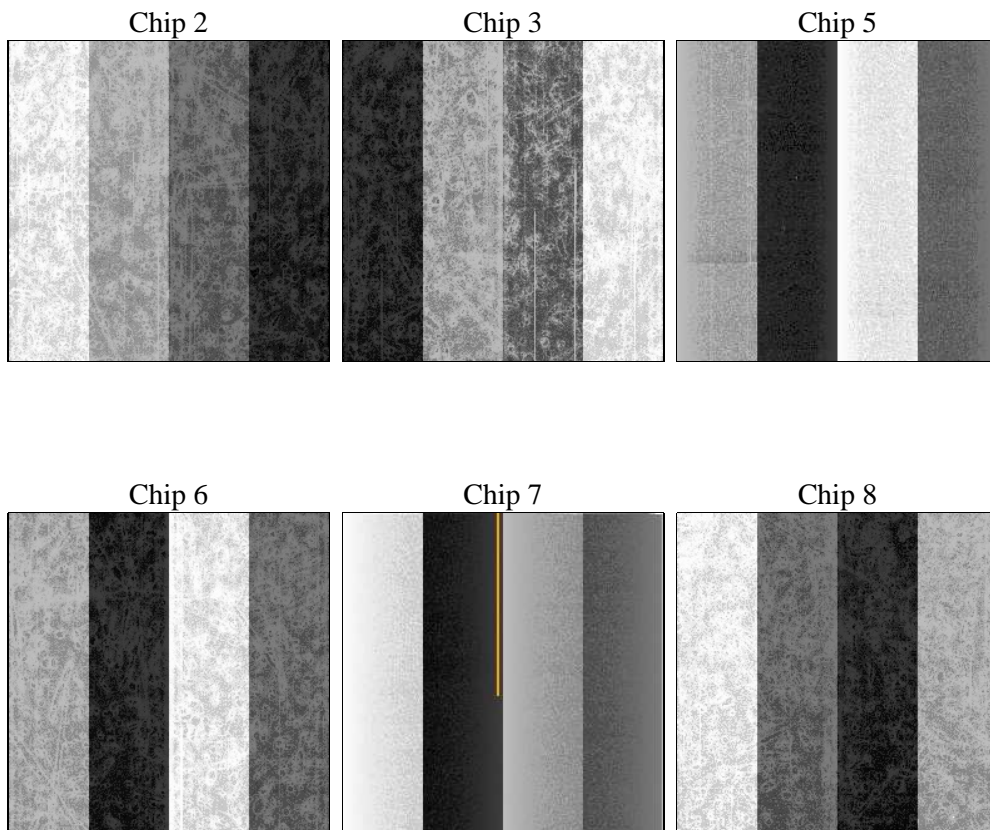
2 OBI

2.1 OBI

2.1.1 Images



2.1.2 Bias



2.1.3 Parameters

obi_num	0	Obi number	sched_exp_time	26950.000000	[s] Scheduled observation exposure time
ascdsver	8.4.4	Processing system revision	ontime	27000.601441741	Sum of GTIs [s]
caldbver	4.4.9	 	ontime2	27000.642481744	Sum of GTIs [s]
date	2012-05-31T15:18:03	Date and time of file creation	ontime3	27000.478321731	Sum of GTIs [s]
revision	2	Processing version of data	ontime5	27000.560401738	Sum of GTIs [s]
			ontime6	27000.519361734	Sum of GTIs [s]
			ontime7	27000.601441741	Sum of GTIs [s]
			ontime8	27000.437281728	Sum of GTIs [s]
			l1events	2008771	Number of level 1 events

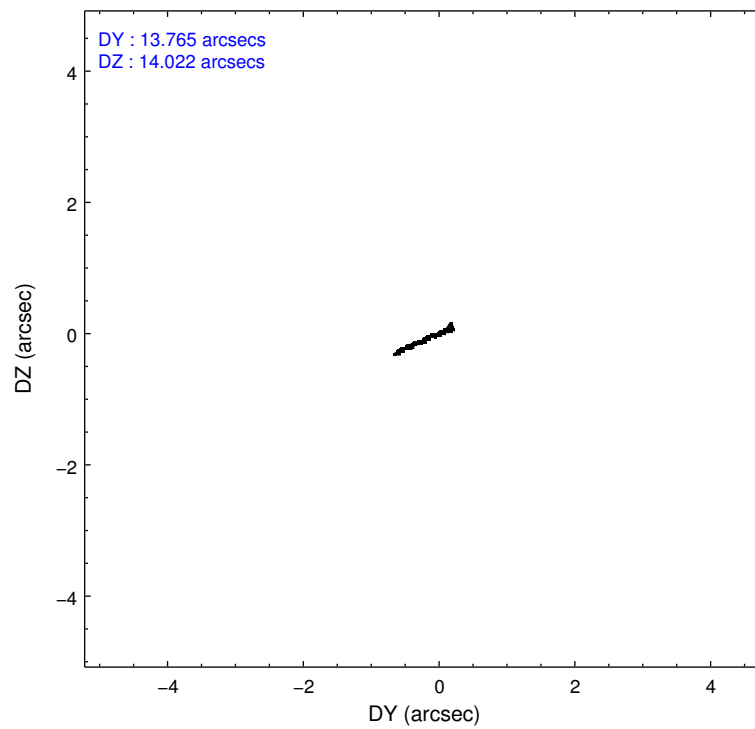
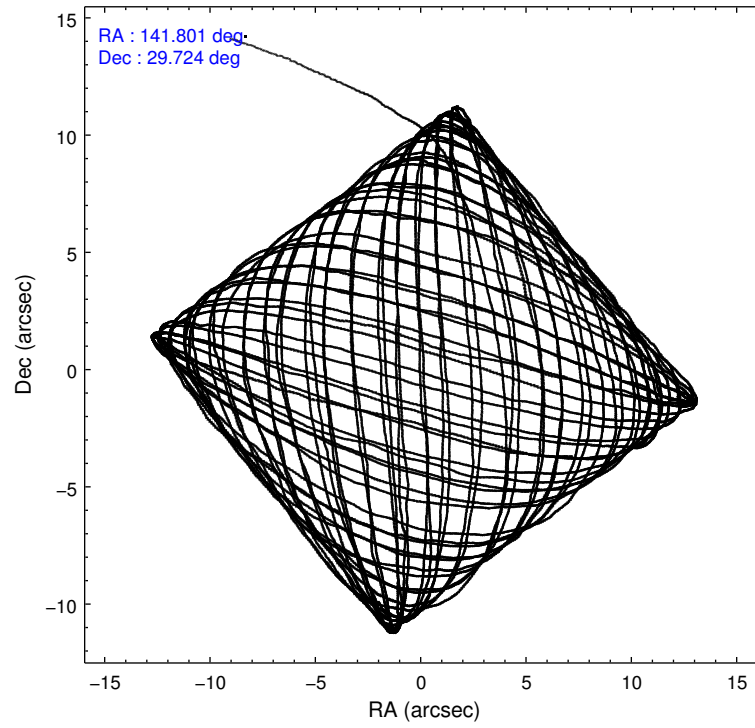
2.1.4 Events

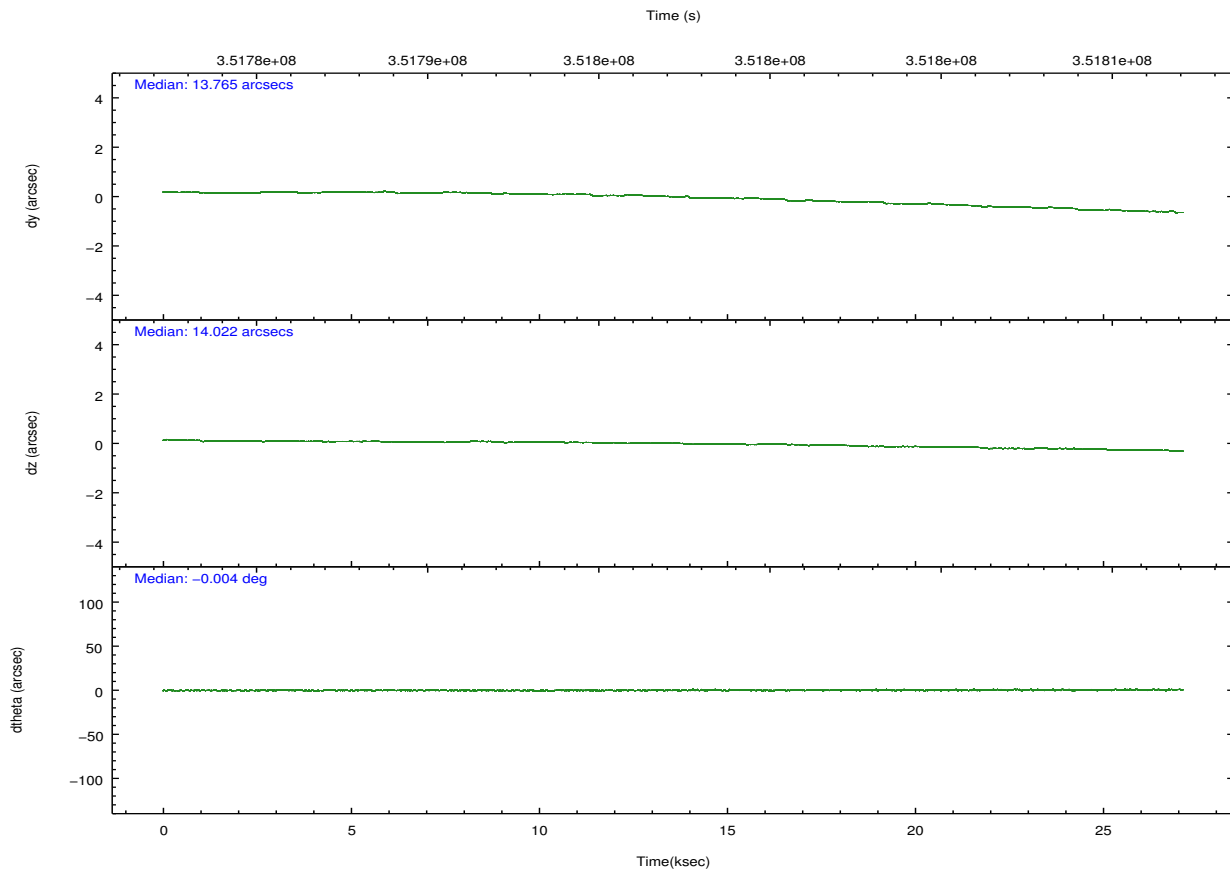
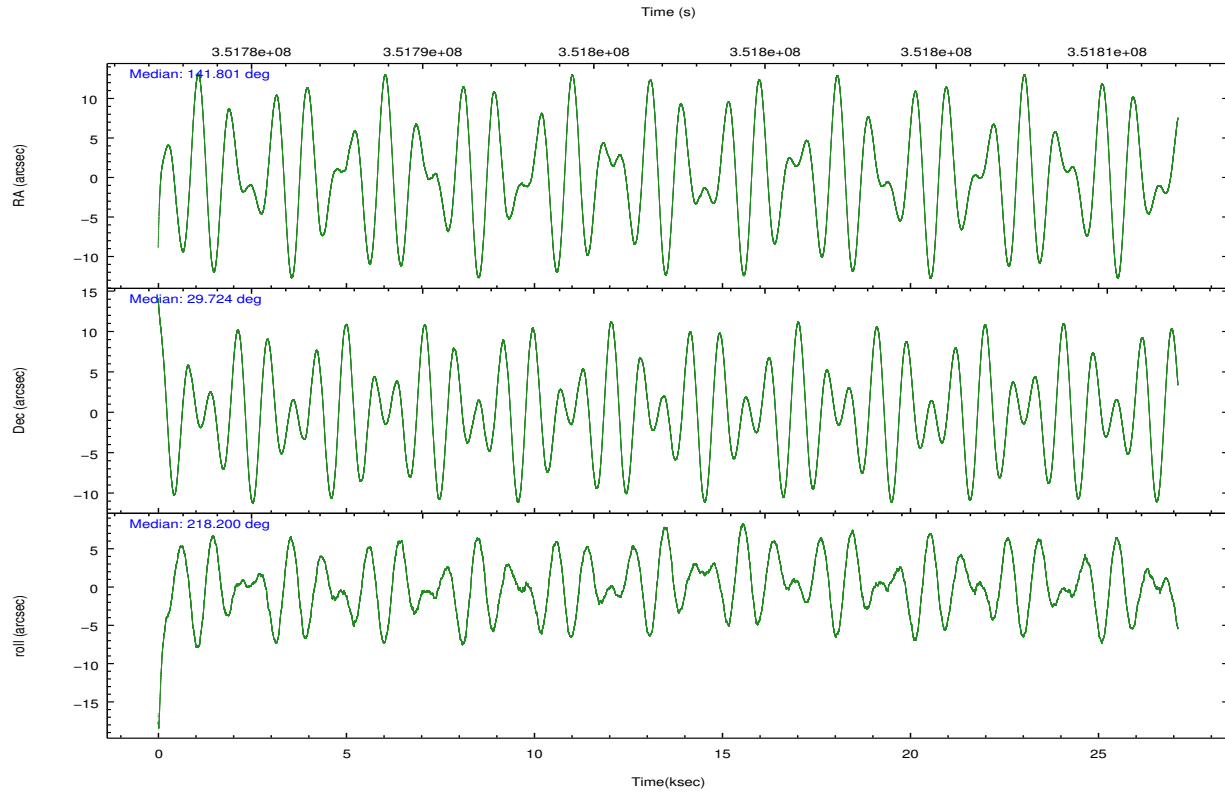
	ccd 2	ccd 3	ccd 5	ccd 6	ccd 7	ccd 8		ccd 2	ccd 3	ccd 5	ccd 6	ccd 7	ccd 8
level 1 events	282015	266016	439659	280497	386490	354094	grade 0 events	13559	14259	21495	13700	13968	25103
rejected events	249725	233346	236511	245886	226337	273353		4%	5%	4%	4%	3%	7%
rejected %	88%	87%	53%	87%	58%	77%	grade 1 events	209	191	634	183	421	249
								0%	0%	0%	0%	0%	0%
							grade 2 events	7185	6420	63204	7730	32831	18814
								2%	2%	14%	2%	8%	5%
							grade 3 events	2934	3033	6550	3113	13463	7886
								1%	1%	1%	1%	3%	2%
							grade 4 events	3069	3079	6373	3075	13427	7496
								1%	1%	1%	1%	3%	2%
							grade 5 events	11529	12927	30657	13274	36230	17989
								4%	4%	6%	4%	9%	5%
							grade 6 events	5549	5884	105552	7000	86477	21447
								1%	2%	24%	2%	22%	6%
							grade 7 events	237981	220223	205194	232422	189673	255110
								84%	82%	46%	82%	49%	72%

2.2 Compared Parameters

Parameter	Planned	Actual	Parameter	Planned	Actual
Instrument	ACIS	ACIS	Obspar format version number	7	7
Detector	ACIS-235678	ACIS-235678	Obspar file type	PREDICTED	ACTUAL
Grating	NONE	NONE	Obspar update status	NONE	UPDATED
Data mode	FAINT	FAINT	CCD I0 on	N	N
Observation mode	POINTING	POINTING	CCD I1 on	N	N
[deg] Pointing RA	141.811875	141.8005788147314	CCD I2 on	O2	Y
[deg] Pointing Dec	29.749859	29.72435079968123	CCD I3 on	O3	Y
[deg] Pointing Roll	218.046600	218.2088227077333	CCD S0 on	N	N
[mm] SIM focus pos	-0.684267	-0.6828225247311905	CCD S1 on	O1	Y
[mm] SIM defocus	0	0.001444936568705701	CCD S2 on	O4	Y
[mm] SIM translation stage pos	-190.132523	-190.1425803651734	CCD S3 on	Y	Y
[mm] SIM translation stage offset	0	0.01005778216563158	CCD S4 on	O5	Y
[s] Observation start time (MET)	351783778.184000	351782769.21441	CCD S5 on	N	N
Observation start date	2009-02-23T13:41:52	2009-02-23T13:26:09	Number of optional ACIS chips dropped	0	0
[s] Observation end time (MET)	351810728.184000	351811905.35335	On-chip summing requested	N	N
Observation end date	2009-02-23T21:11:02	2009-02-23T21:31:45	Subarray requested	NONE	NONE
Read mode	TIMED	TIMED	Alternating exposures requested	N	N
			[s] Primary exposure time	0.000000	3.2

2.3 Aspect



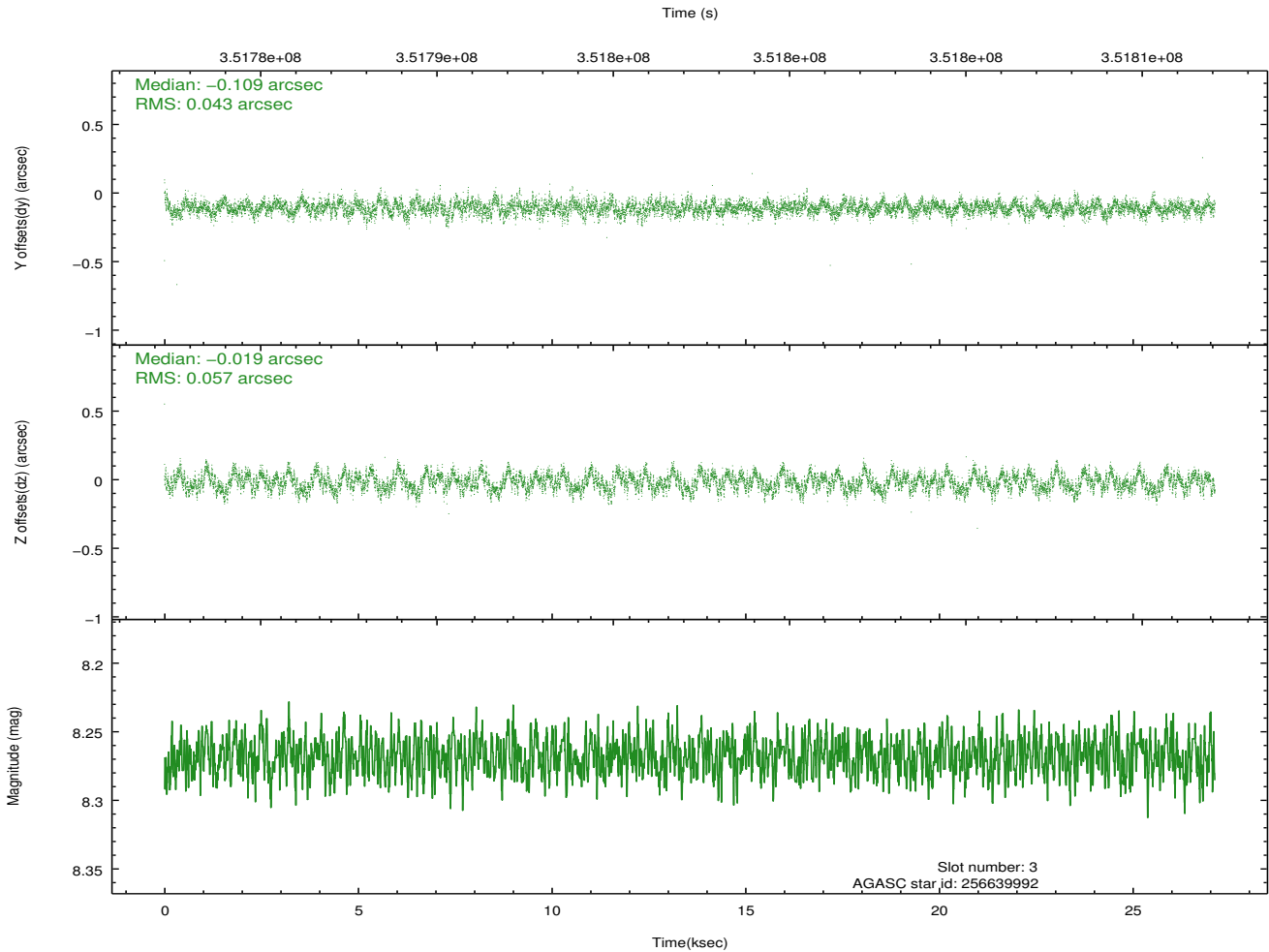
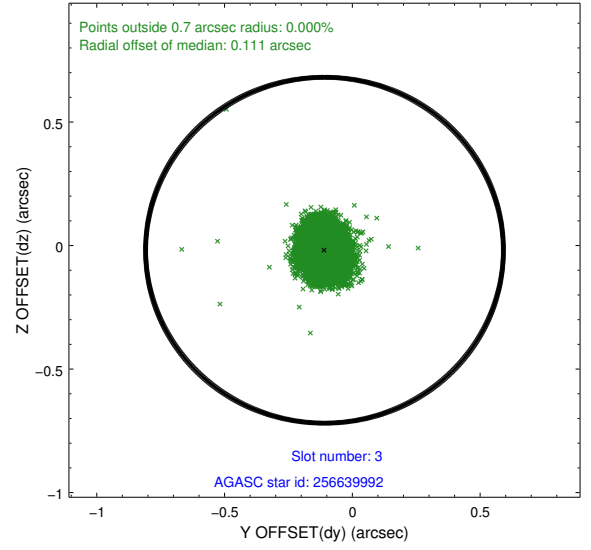
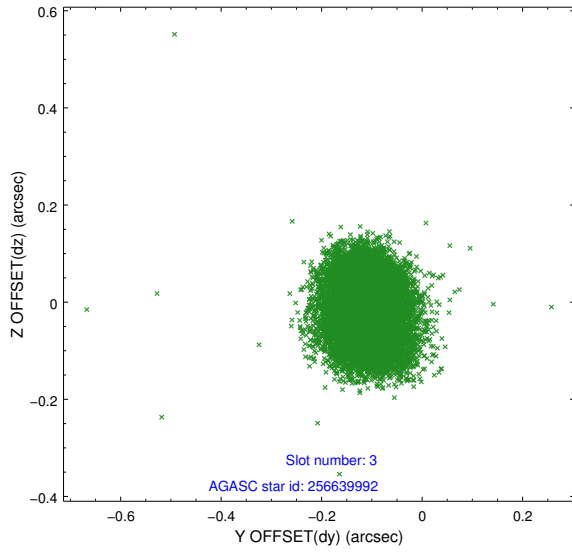


Slot Statistics

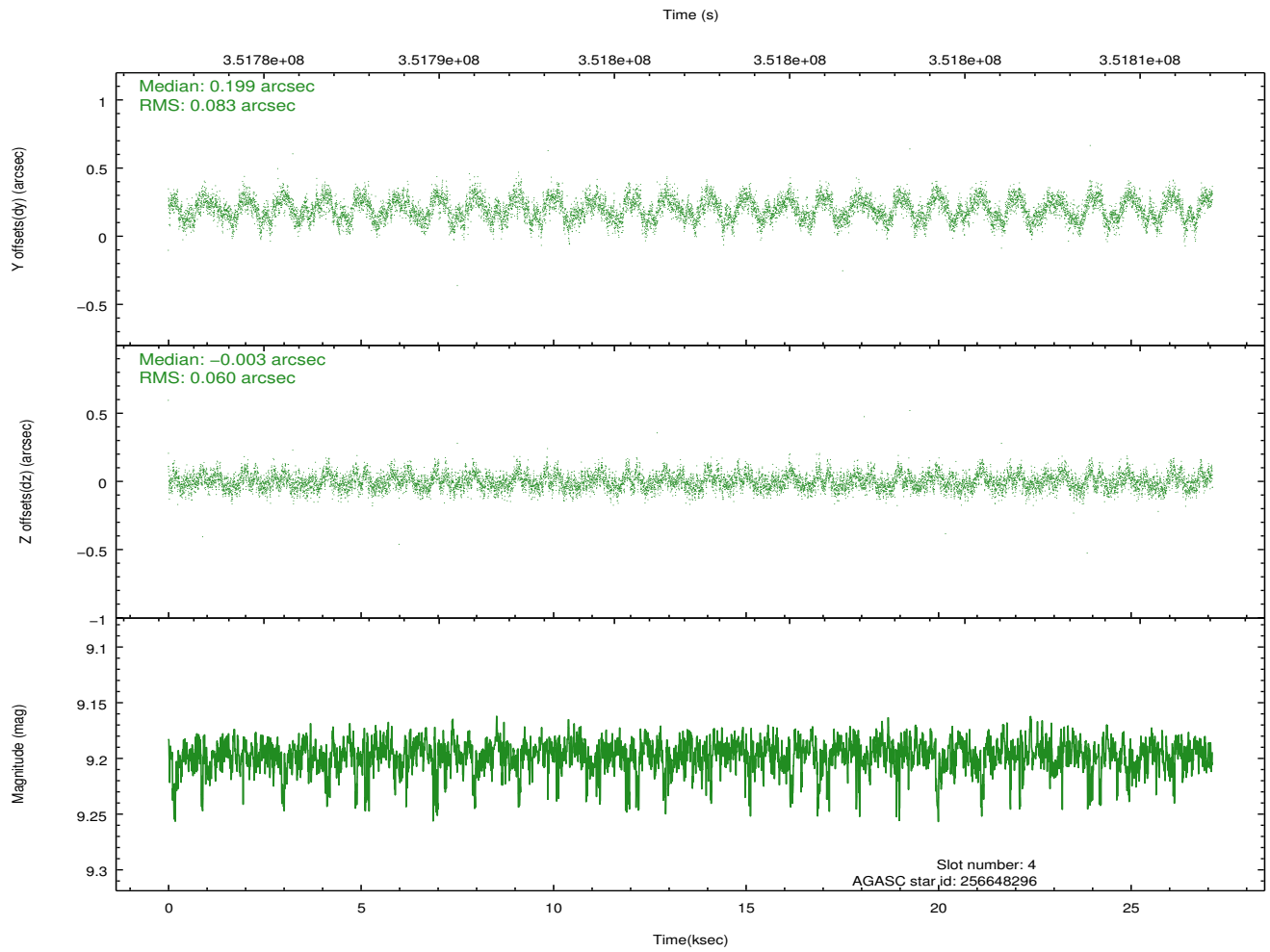
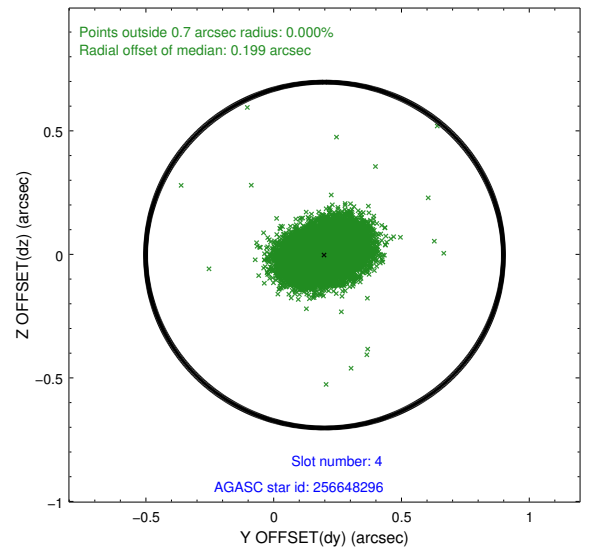
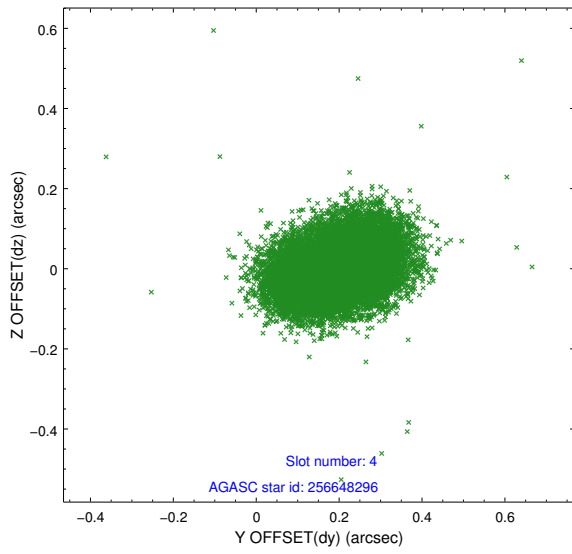
slot	status	id	mag	n_pts	med_dy	med_dz	dr1	dr2	ra	dec	mean_y	mean_z
0	FID	ACIS-S-2	6.98	6615	-0.052	-0.054	0.013	0.024	0.000000	0.000000	-766.65	-1735.34
1	FID	ACIS-S-4	7.06	6615	0.195	0.040	0.016	0.038	0.000000	0.000000	2146.82	173.14
2	FID	ACIS-S-5	7.09	6614	-0.173	0.024	0.009	0.016	0.000000	0.000000	-1819.50	166.90
3	GUIDE	256639992	8.27	13225	-0.109	-0.019	0.076	0.122	141.843976	29.234010	1065.16	1525.13
4	GUIDE	256648296	9.20	13213	0.199	-0.003	0.109	0.171	141.500164	29.391660	1564.38	412.59
5	GUIDE	257559592	9.34	13216	-0.053	0.041	0.095	0.155	142.616650	29.573449	-1598.03	2046.44
6	GUIDE	326894960	8.95	13220	0.089	-0.034	0.108	0.166	141.736989	30.296358	-1028.53	-1692.17
7	GUIDE	326904496	9.63	13205	-0.126	0.009	0.124	0.201	141.156023	30.122423	778.86	-2319.22

2.4 Star Slots

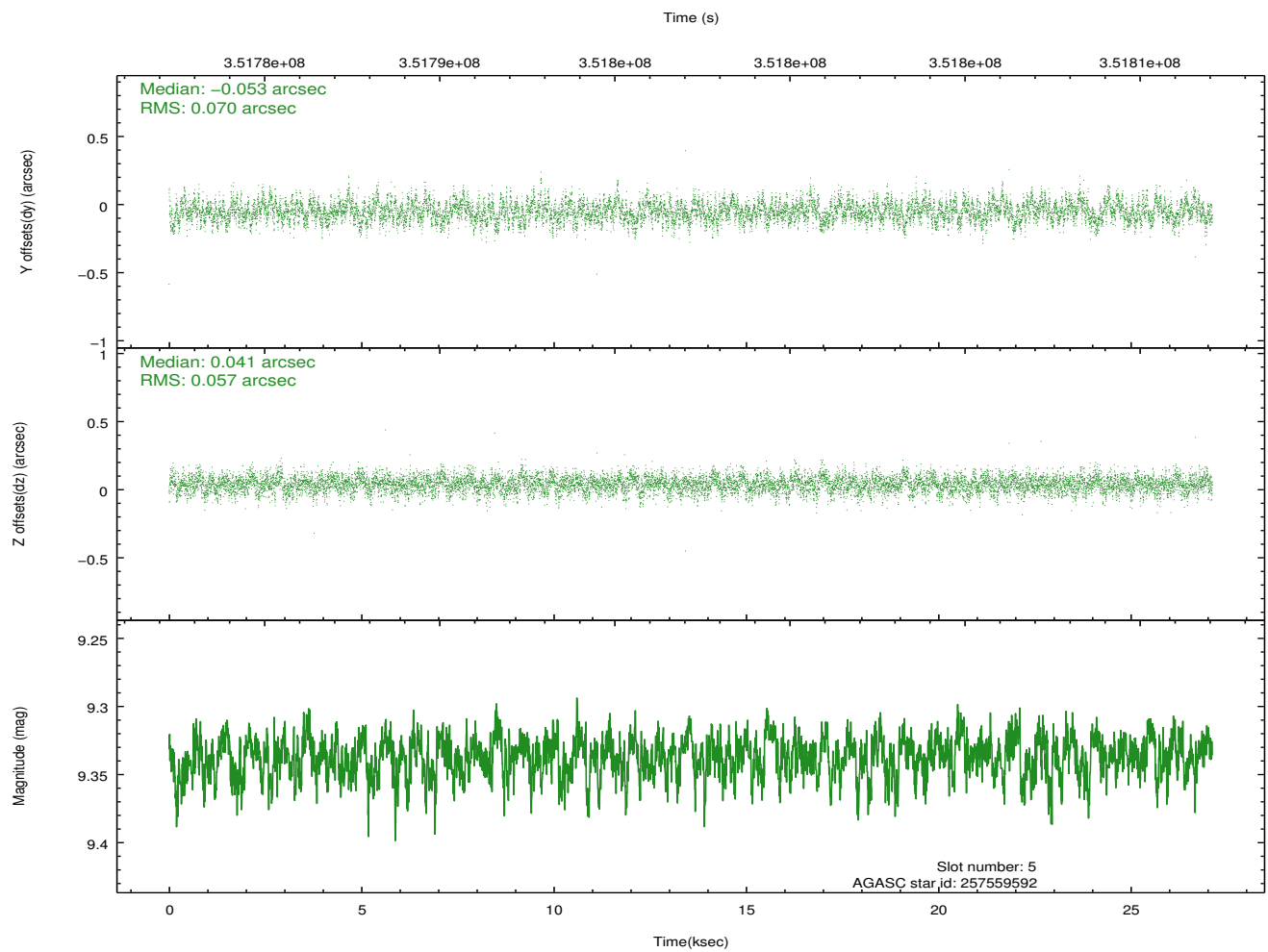
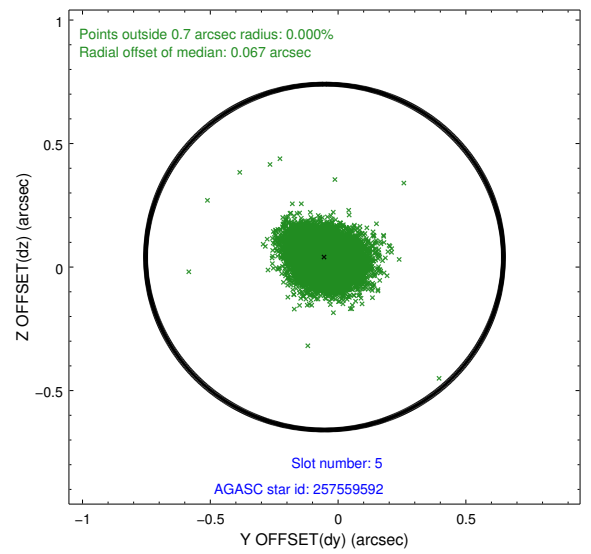
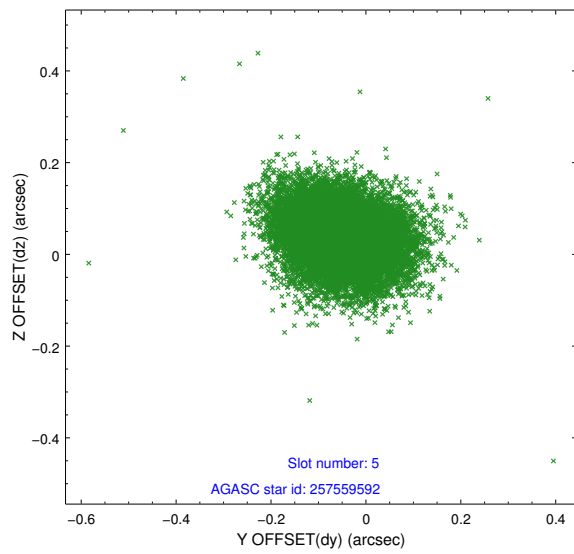
2.4.1 Slot 3



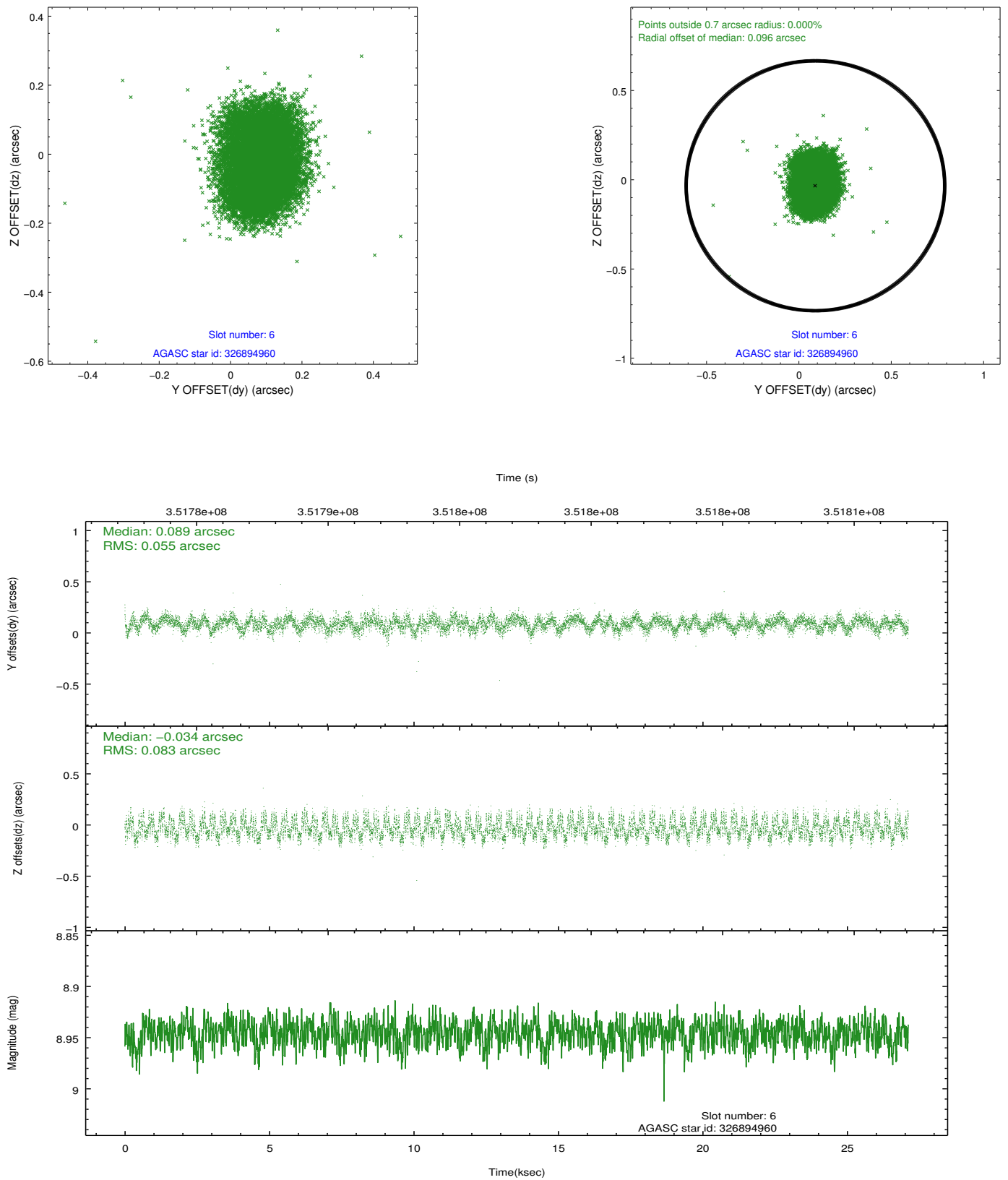
2.4.2 Slot 4



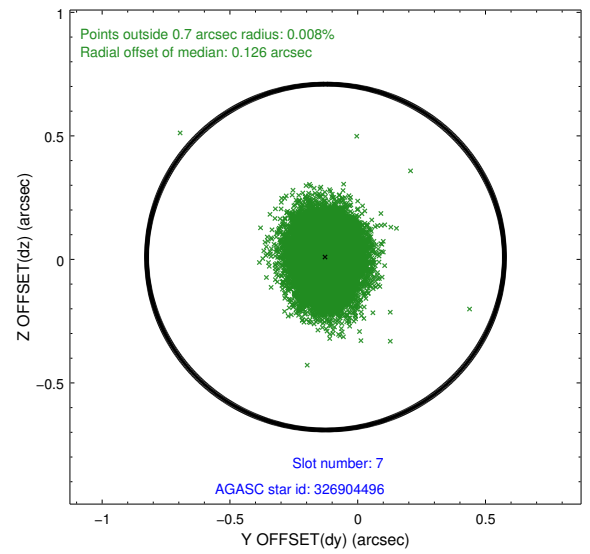
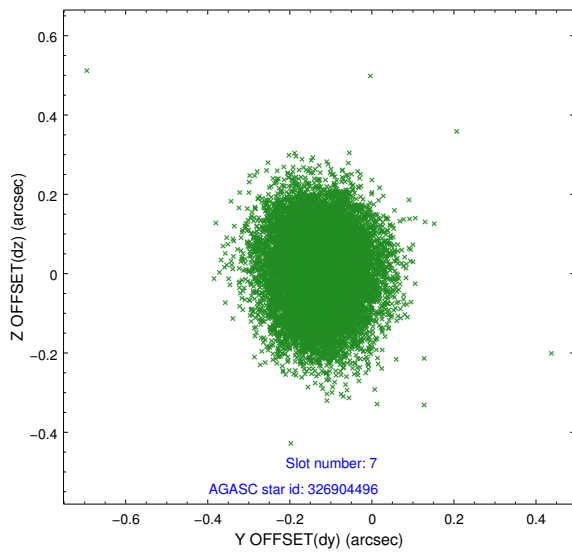
2.4.3 Slot 5



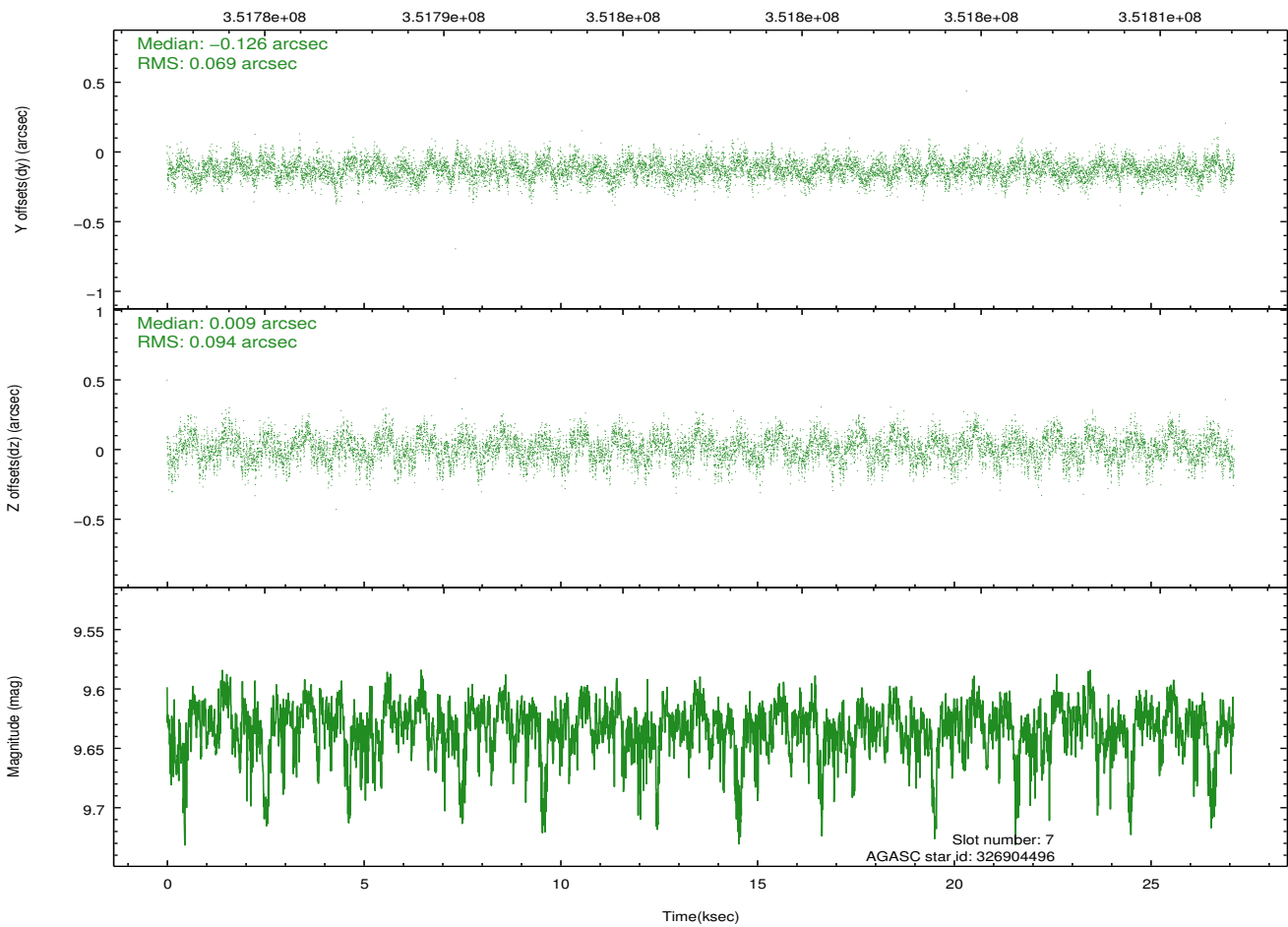
2.4.4 Slot 6



2.4.5 Slot 7

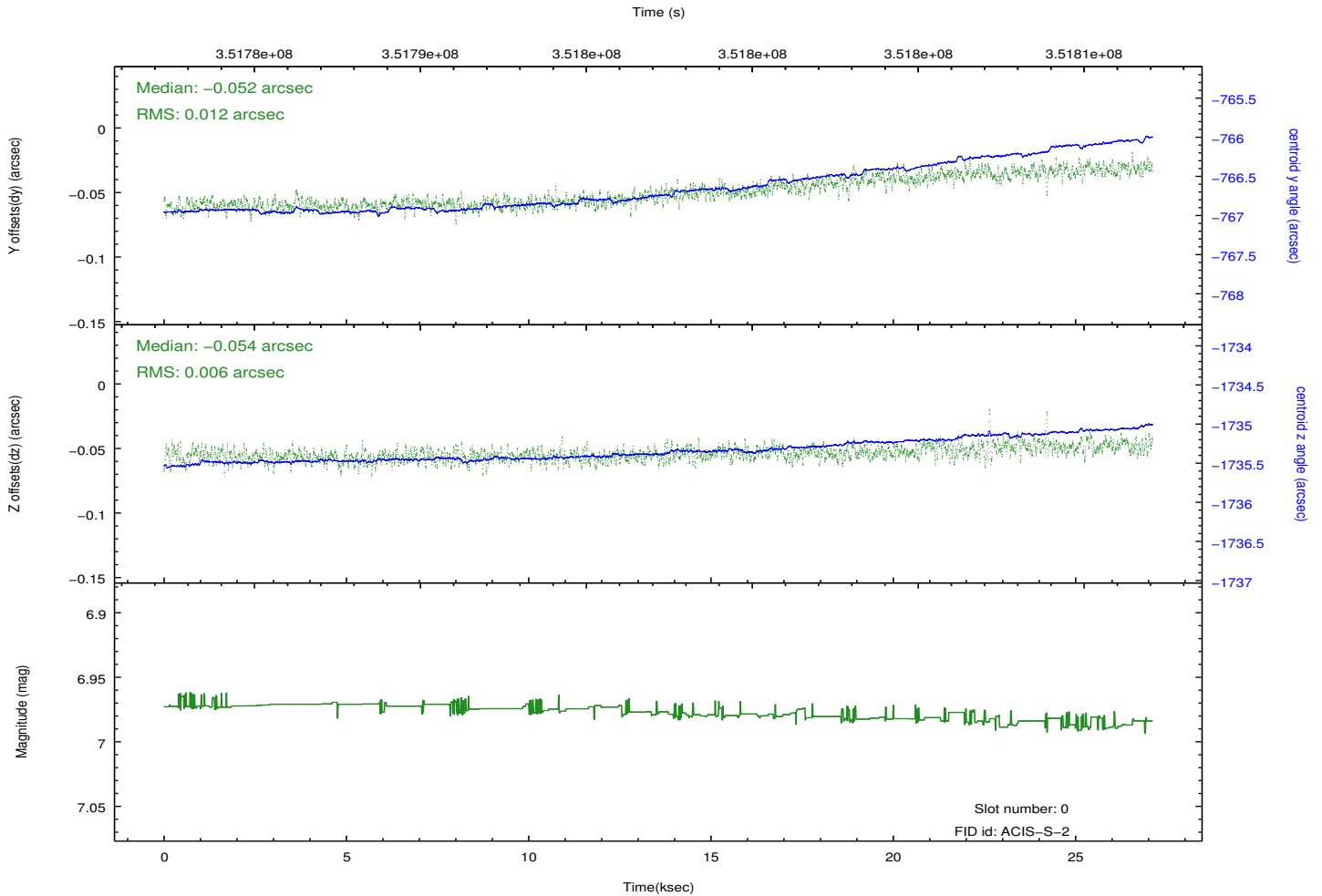
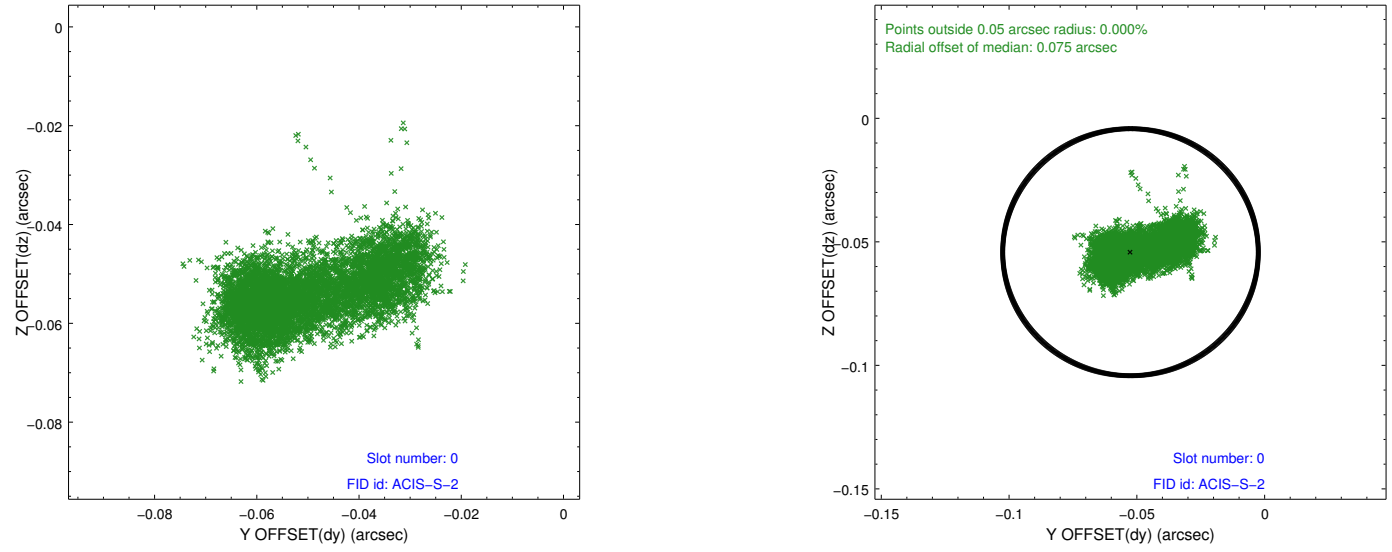


Time (s)

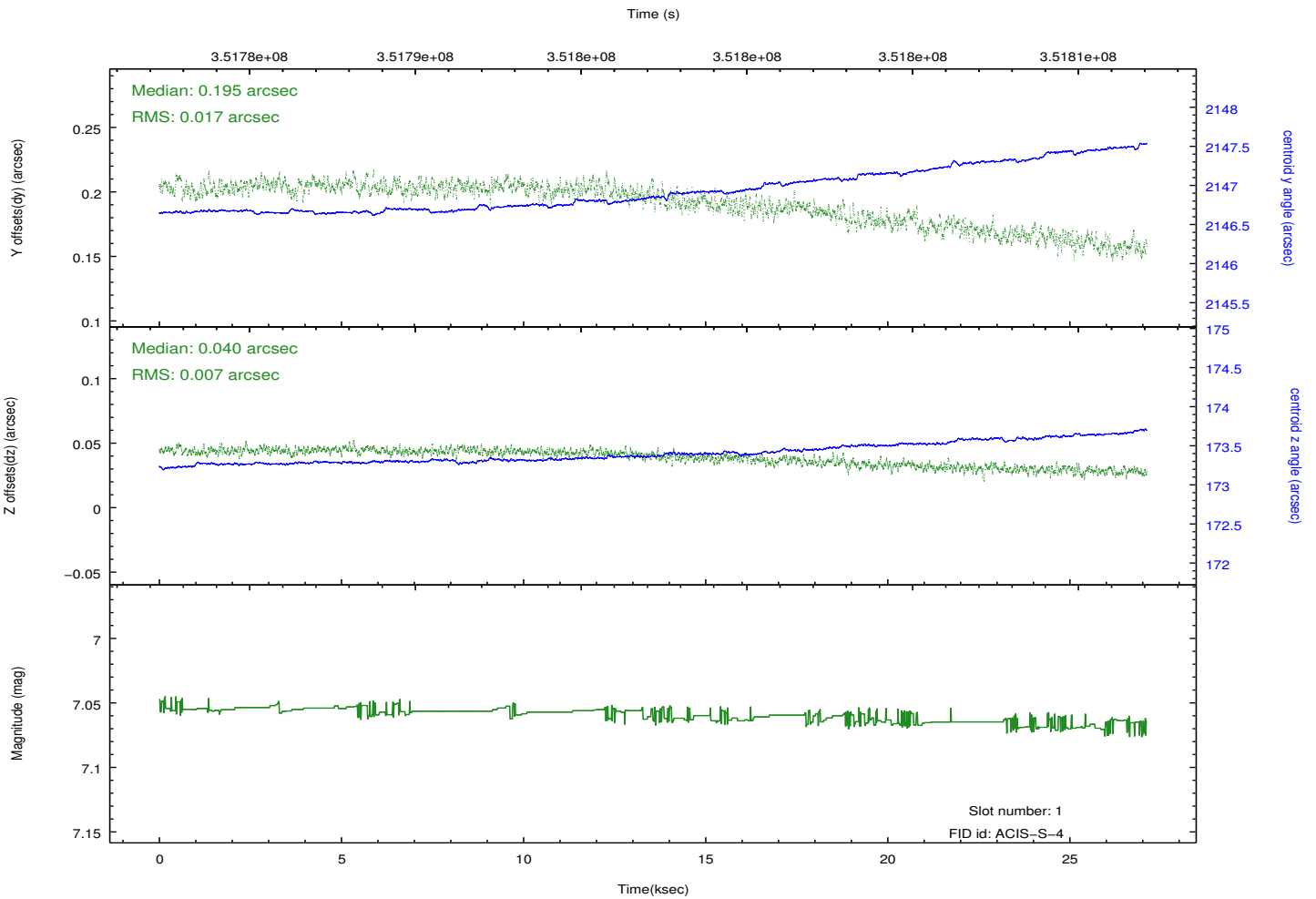
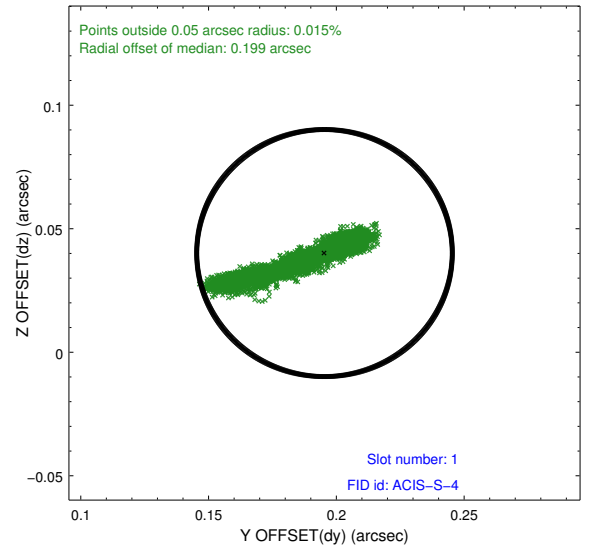
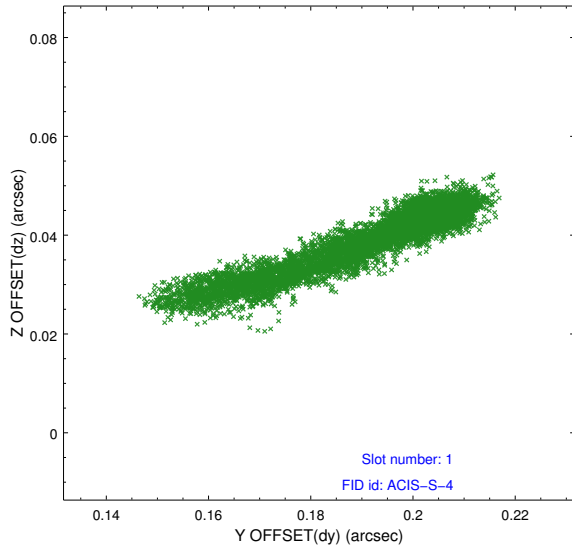


2.5 FID Slots

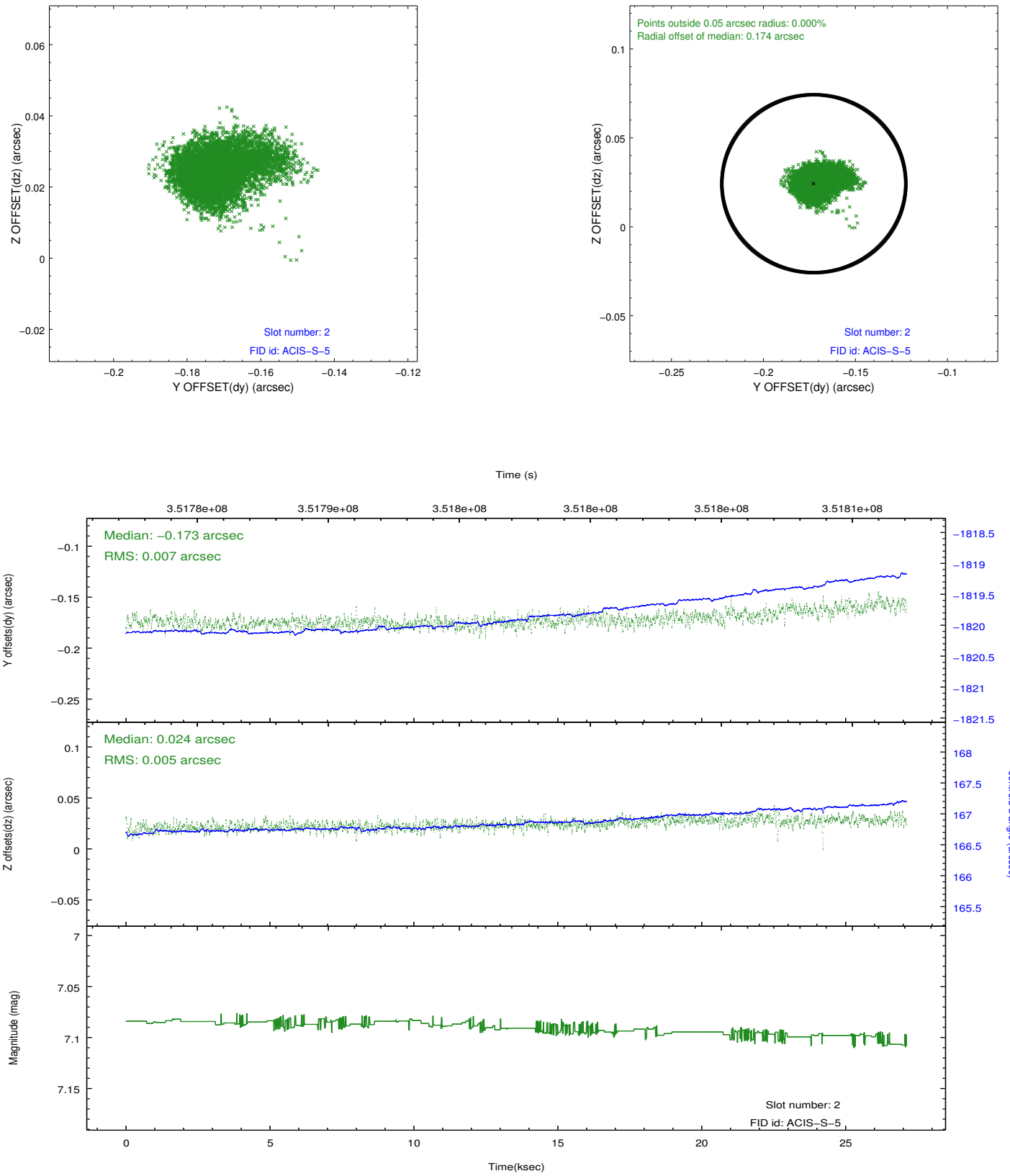
2.5.1 Slot 0



2.5.2 Slot 1



2.5.3 Slot 2



A Summary

A.1 Status

V&V Scientist	Jen Lauer
V&V Date (YYYY-MM-DD)	2012.06.06
V&V Edition	1
V&V Disposition and Status	OK
V&V Charge Time	27.0015998

A.2 Comments