

V&V Reference Report

L2 ASCDS Version : 8.4.4

Observation 10761 - L2 Version 3
Chandra X-Ray Center

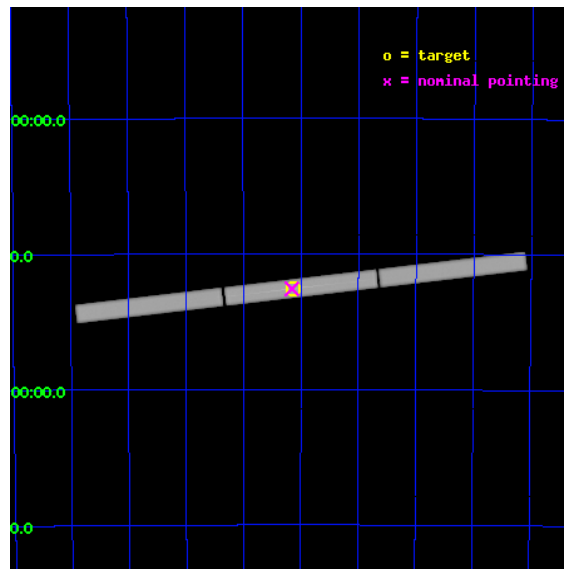
L2 Processing Date : Aug 13 2012

Contents

1	Front	2
2	OBI	3
2.1	OBI	3
2.1.1	Images	3
2.1.2	Parameters	4
2.1.3	Events	4
2.2	Compared Parameters	5
2.3	Aspect	6
2.4	Star Slots	9
2.4.1	Slot 3	9
2.4.2	Slot 4	10
2.4.3	Slot 5	11
2.4.4	Slot 6	12
2.4.5	Slot 7	13
2.5	FID Slots	14
2.5.1	Slot 0	14
2.5.2	Slot 1	15
2.5.3	Slot 2	16
3	Gratings	17
3.1	LETG Arm	17
A	Summary	19
A.1	Status	19
A.2	Comments	19

1 Front

seq_num	900868	Sequence number
obs_id	10761	Observation id
title	A Benchmark Observation of the Warm-Hot Intergalactic Medium	Propo
observer	Dr. Taotao Fang	Principal investigator
object	H 2356-309	Source name
ra_targ	359.782917	Observer's specified target RA [deg]
dec_targ	-30.628056	Observer's specified target Dec [deg]
ra_nom	359.78844471679	Nominal RA [deg]
dec_nom	-30.628670363404	Nominal Dec [deg]
roll_nom	353.27015074085	Nominal Roll [deg]
revision	3	Processing version of data
ontime	42149.027074158	[s]
livetime	41696.589306498	Ontime multiplied by DTCOR
l2events	3675509	Number of level 2 events

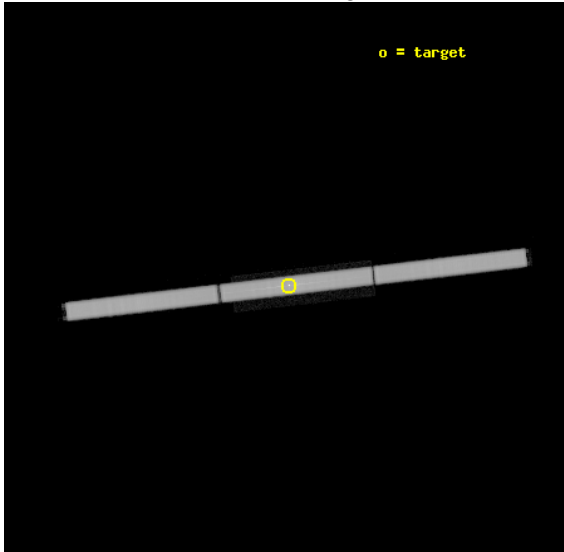


2 OBI

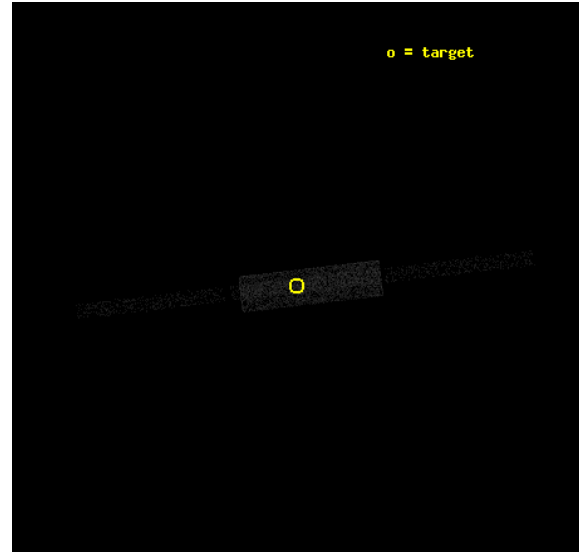
2.1 OBI

2.1.1 Images

Level 1 Image



Level 1 Bad Events



2.1.2 Parameters

obi_num	0	Obi number	sched_exp_time	42000.000000	[s] Scheduled observation exposure time
ascdsver	8.4.5	Processing system revision	ontime	42149.027074158	[s]
caldbver	4.5.1.1	 	l1events	4899610	Number of level 1 events
date	2012-08-12T22:30:25	Date and time of file creation			
revision	3	Processing version of data			

2.1.3 Events

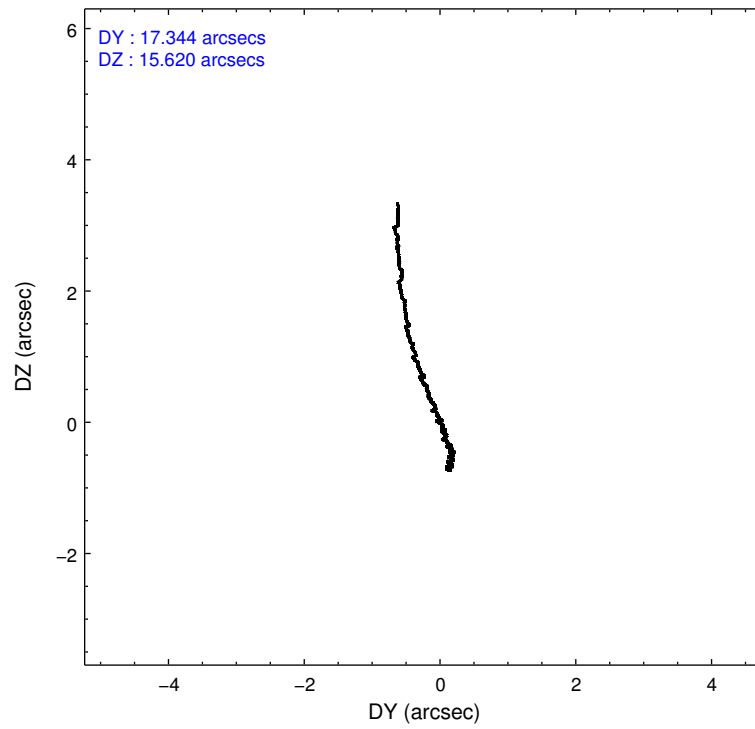
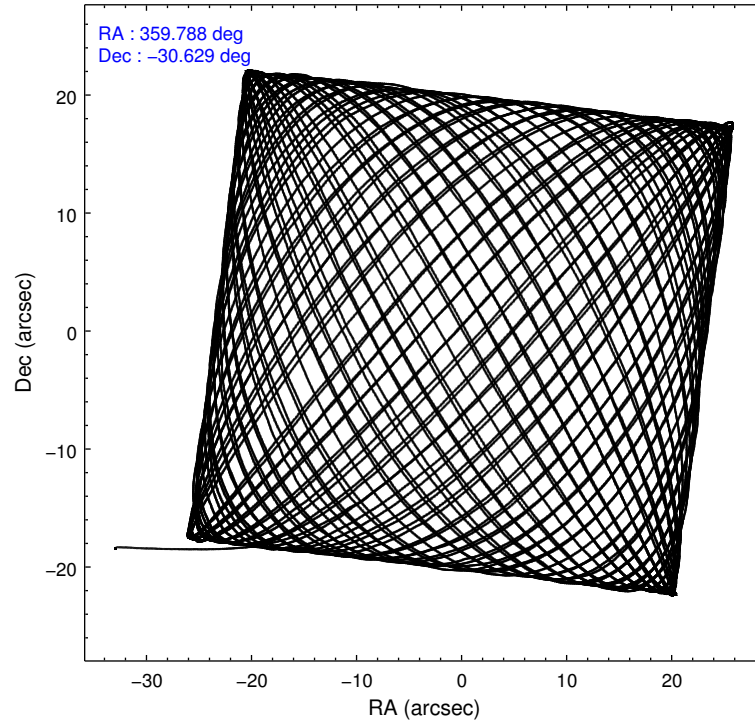
Level 1 Events

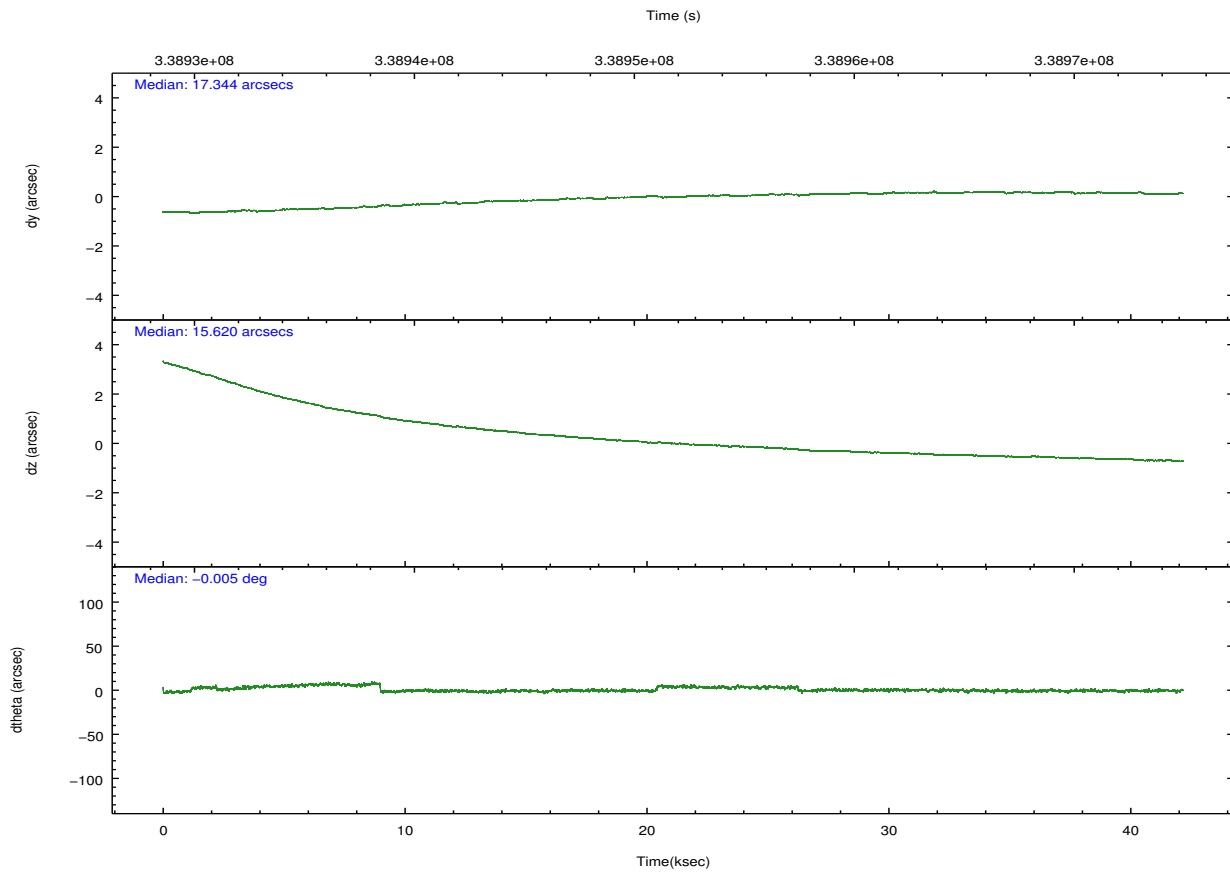
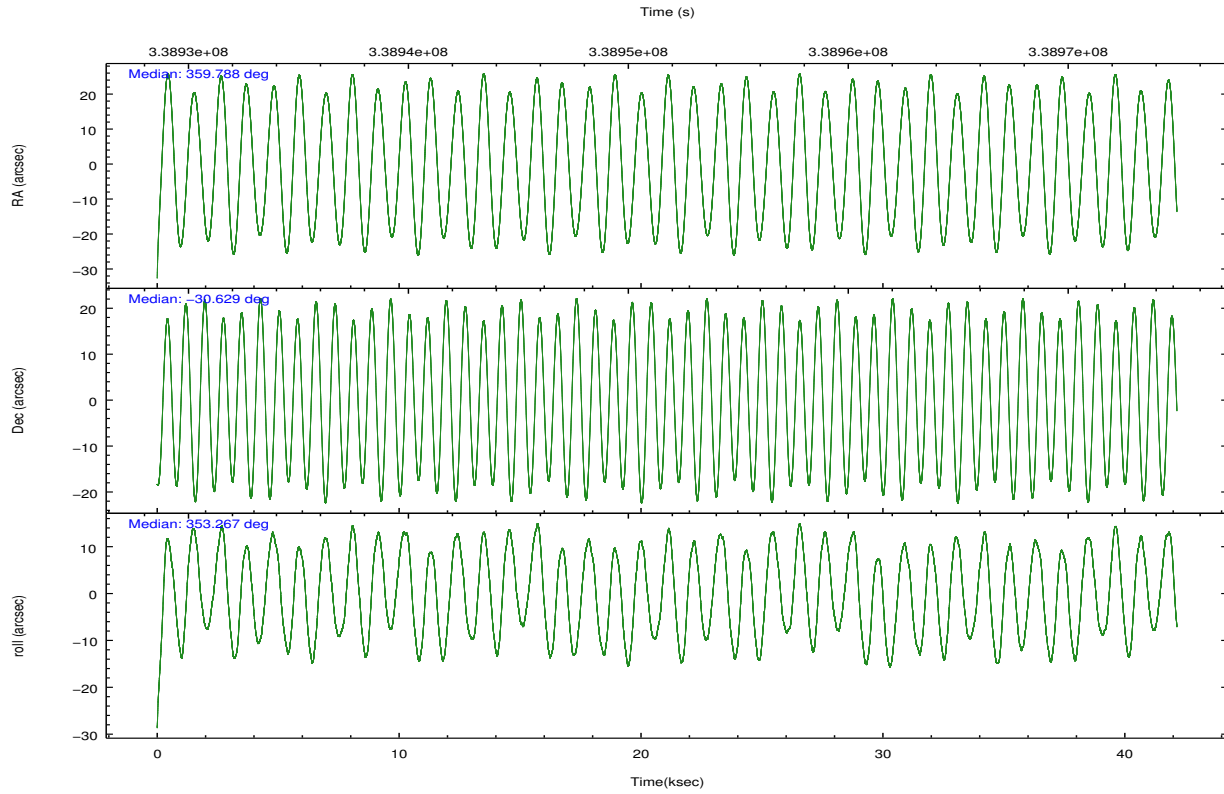
	segment 1	segment 2	segment 3
level 1 events	1615815	1659747	1624048
rejected events	38623	46037	38802
rejected %	2%	2%	2%

2.2 Compared Parameters

Parameter	Planned	Actual	Parameter	Planned	Actual
Instrument	HRC	HRC	Obspar format version number	7	7
Detector	HRC-S	HRC-S	Obspar file type	PREDICTED	ACTUAL
Grating	LETG	LETG	Obspar update status	NONE	UPDATED
Data mode	OBSERVING	OBSERVING			
Observation mode	POINTING	POINTING			
[deg] Pointing RA	359.758447	359.7884447167937			
[deg] Pointing Dec	-30.641324	-30.62867036340447			
[deg] Pointing Roll	353.187532	353.2701507408489			
[mm] SIM focus pos	-1.429586	-1.428180813131781			
[mm] SIM defocus	0.1037507710433287	0.1051558262725154			
[mm] SIM translation stage pos	250.455976	250.466033080201			
[mm] SIM translation stage offset	0	-0.01005468664627074			
[s] Observation start time (MET)	338930842.184000	338929693.44176			
Observation start date	2008-09-27T19:26:17	2008-09-27T19:08:13			
[s] Observation end time (MET)	338972842.184000	338973732.56893			
Observation end date	2008-09-28T07:06:17	2008-09-28T07:22:12			

2.3 Aspect



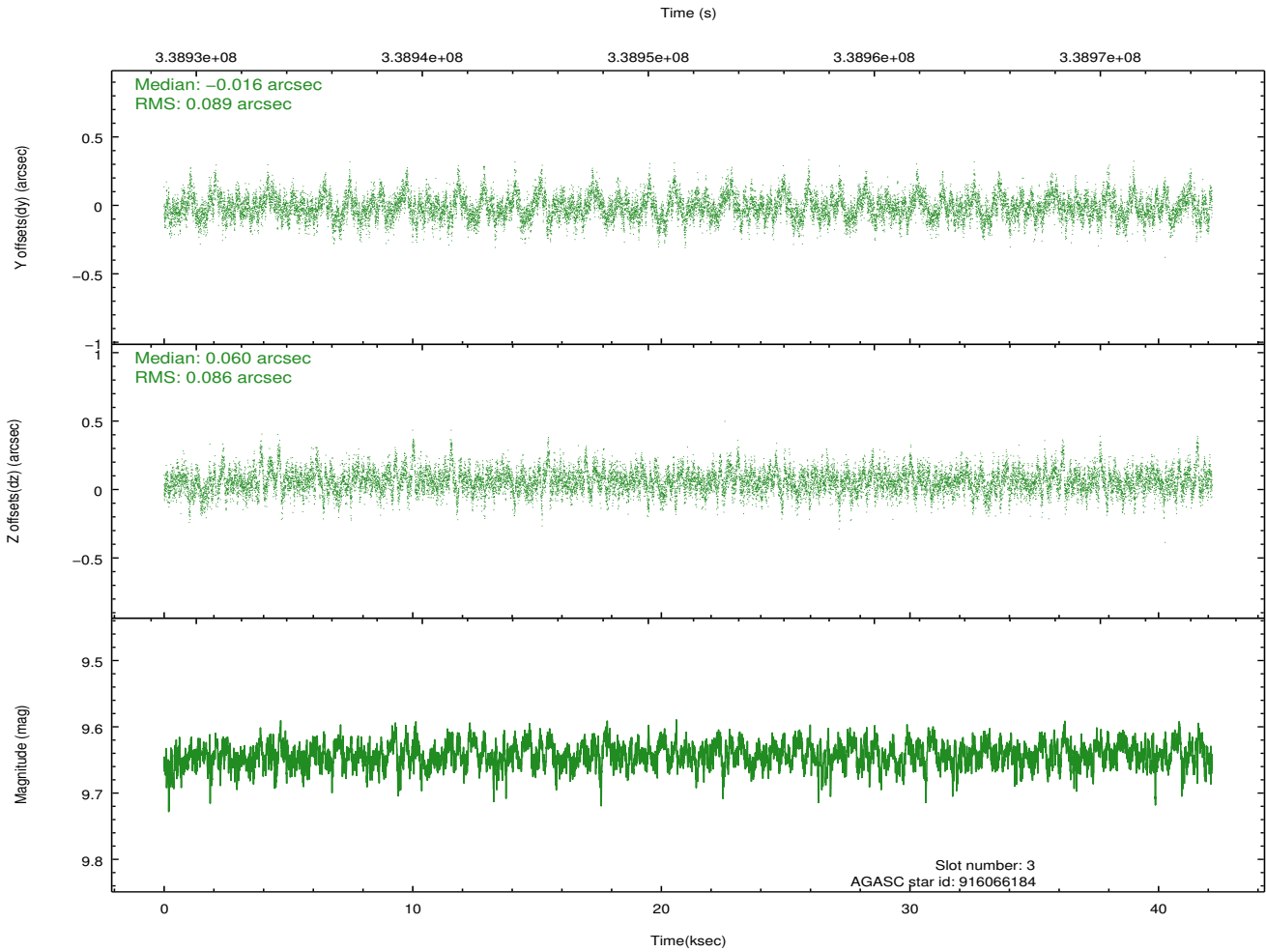
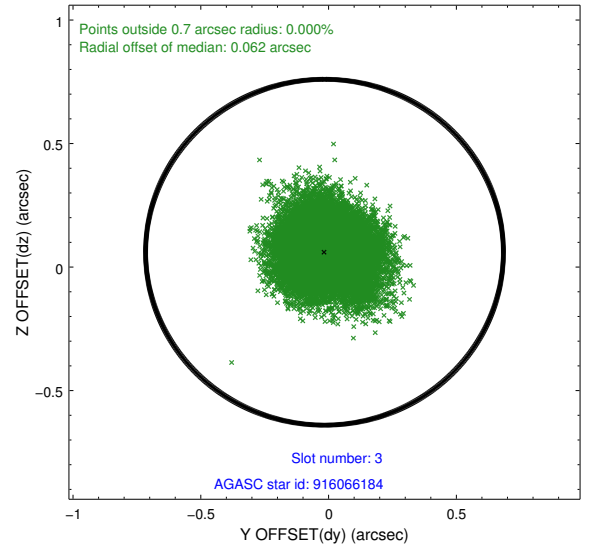
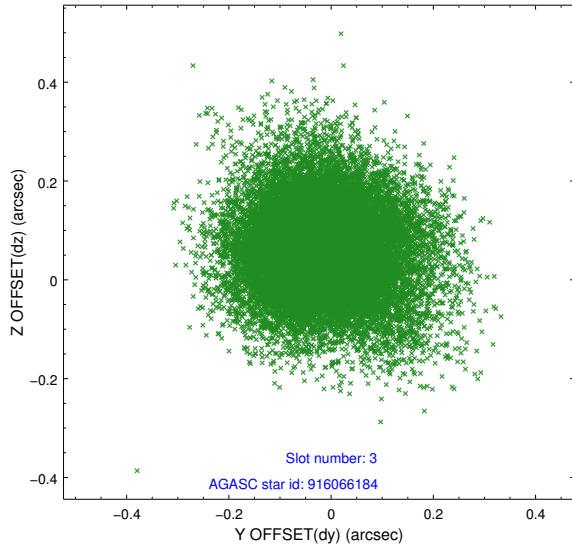


Slot Statistics

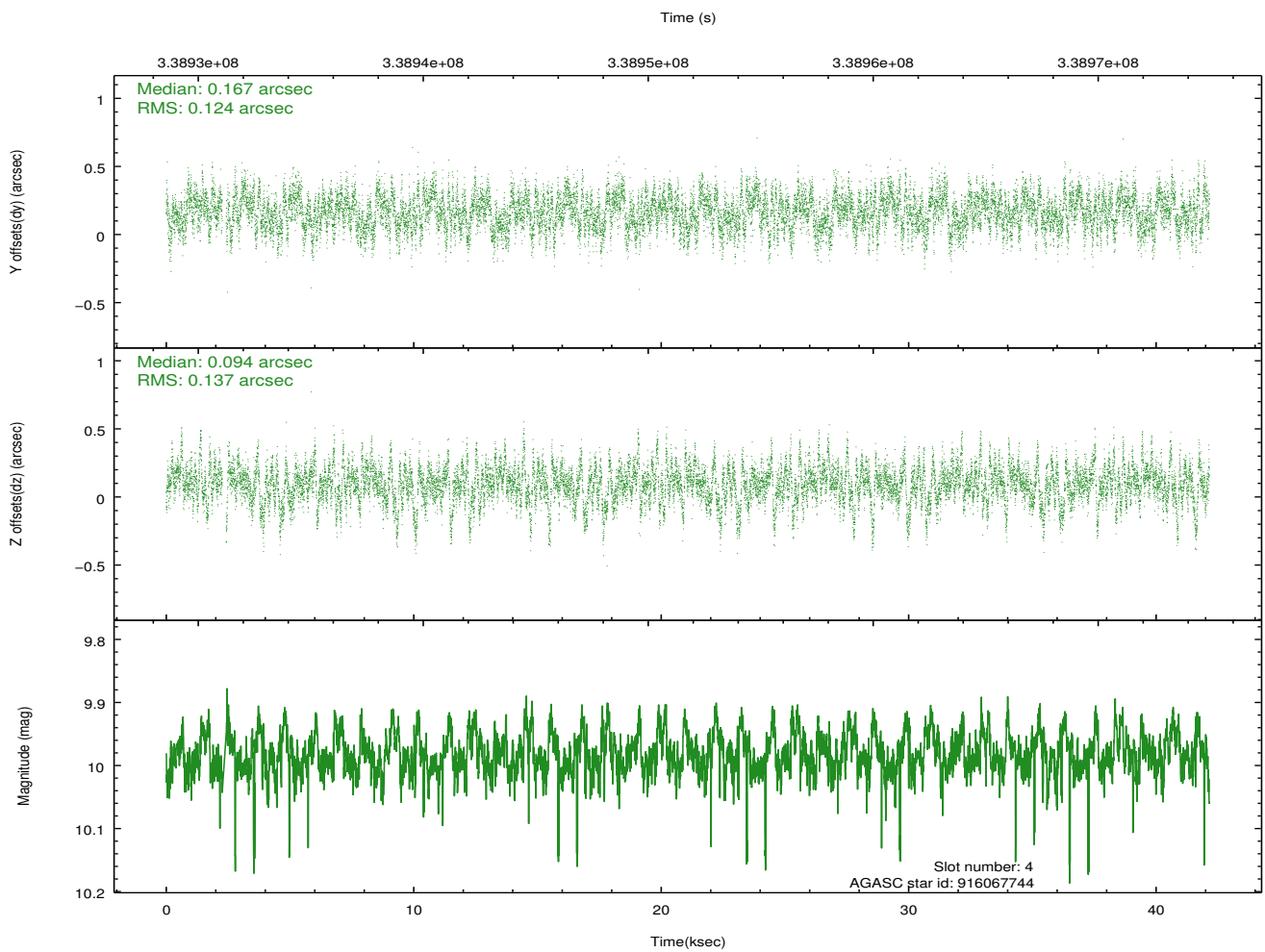
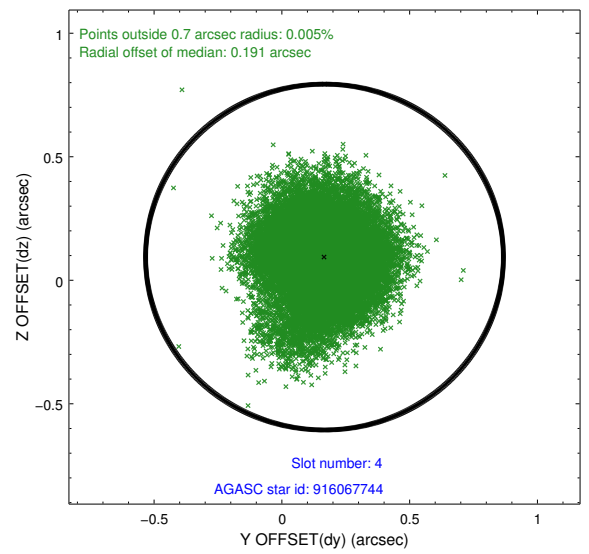
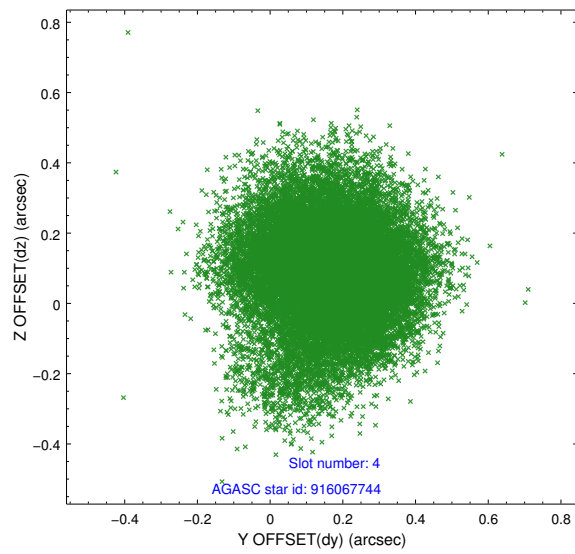
slot	status	id	mag	n_pts	med_dy	med_dz	dr1	dr2	ra	dec	mean_y	mean_z
0	FID	HRC-S-1	7.08	10280	0.003	-0.147	0.006	0.011	0.000000	0.000000	-1171.76	-464.90
1	FID	HRC-S-2	7.06	10280	0.162	-0.161	0.030	0.063	0.000000	0.000000	1227.96	-457.52
2	FID	HRC-S-4	7.02	10279	0.239	0.006	0.028	0.066	0.000000	0.000000	1226.82	567.36
3	GUIDE	916066184	9.64	20516	-0.016	0.060	0.129	0.221	0.174119	-31.230081	1522.65	-1954.88
4	GUIDE	916067744	9.98	20423	0.167	0.094	0.196	0.322	0.549601	-30.250778	2277.68	1679.57
5	GUIDE	985140056	9.51	20524	-0.098	0.025	0.140	0.223	359.169544	-30.957024	-1669.41	-1348.86
6	GUIDE	985144184	10.05	20535	-0.263	-0.093	0.167	0.292	359.125461	-30.330052	-2085.08	873.63
7	GUIDE	916067616	9.36	20533	0.219	-0.086	0.123	0.203	0.517191	-30.685226	2352.50	114.06

2.4 Star Slots

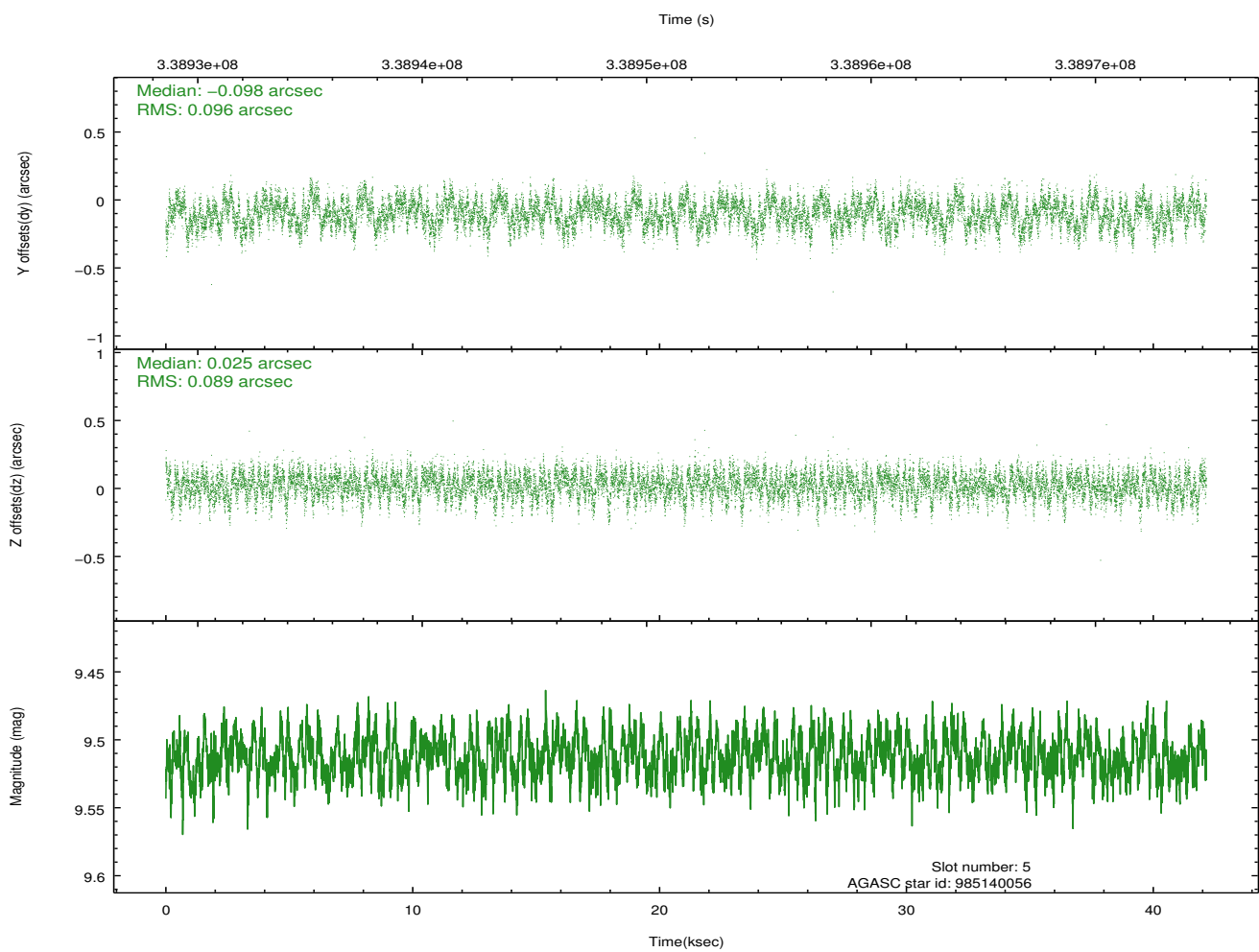
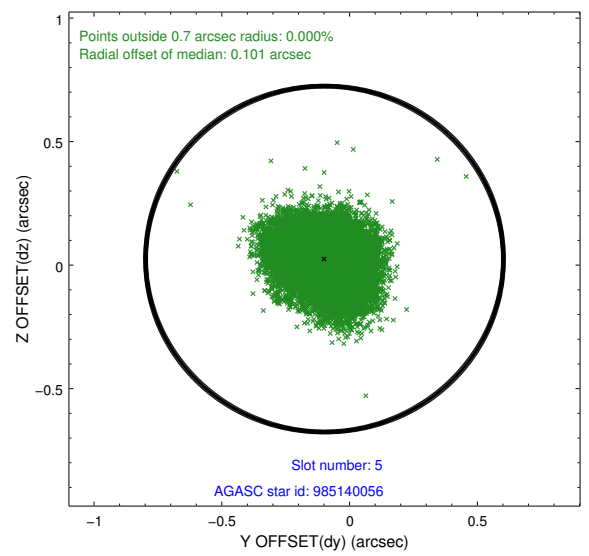
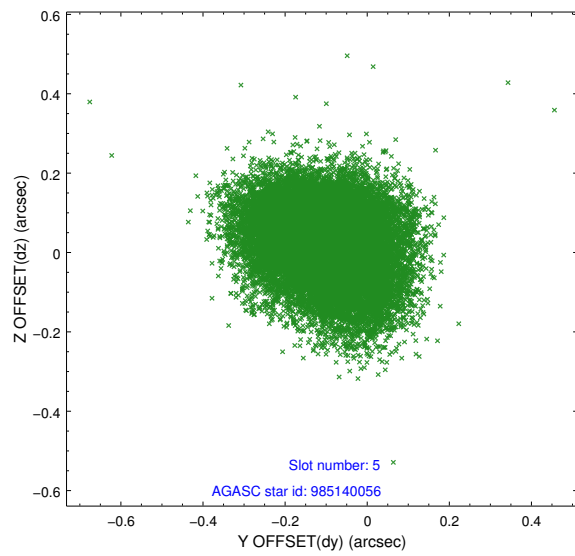
2.4.1 Slot 3



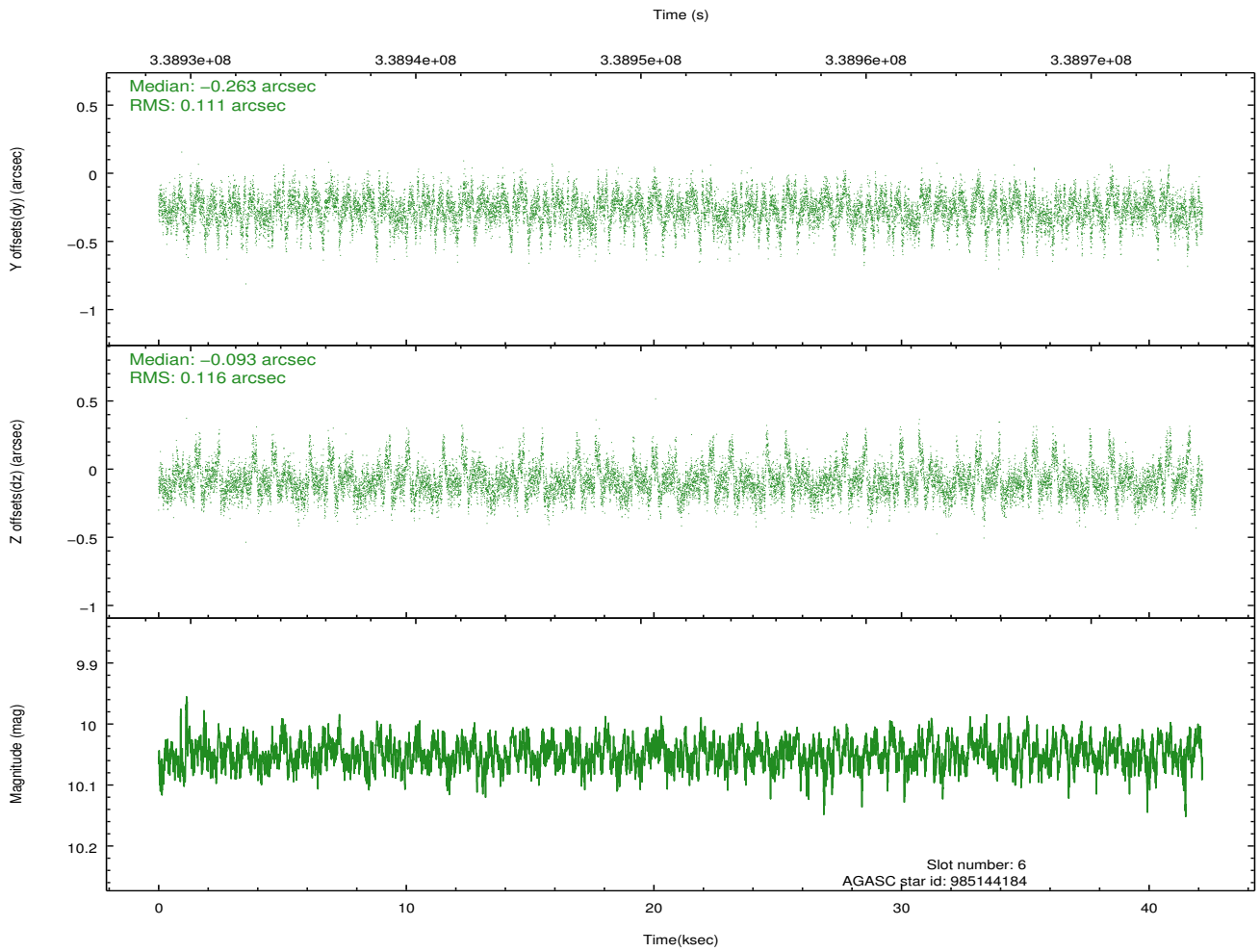
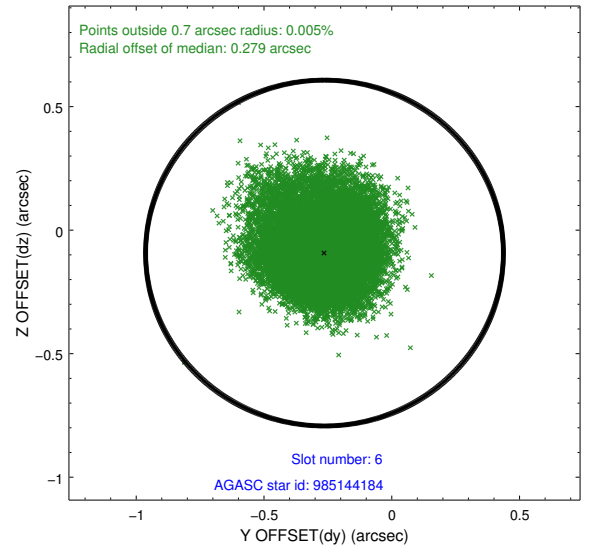
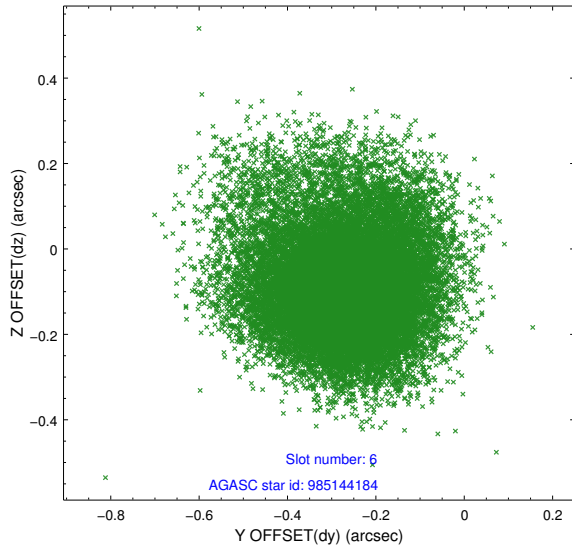
2.4.2 Slot 4



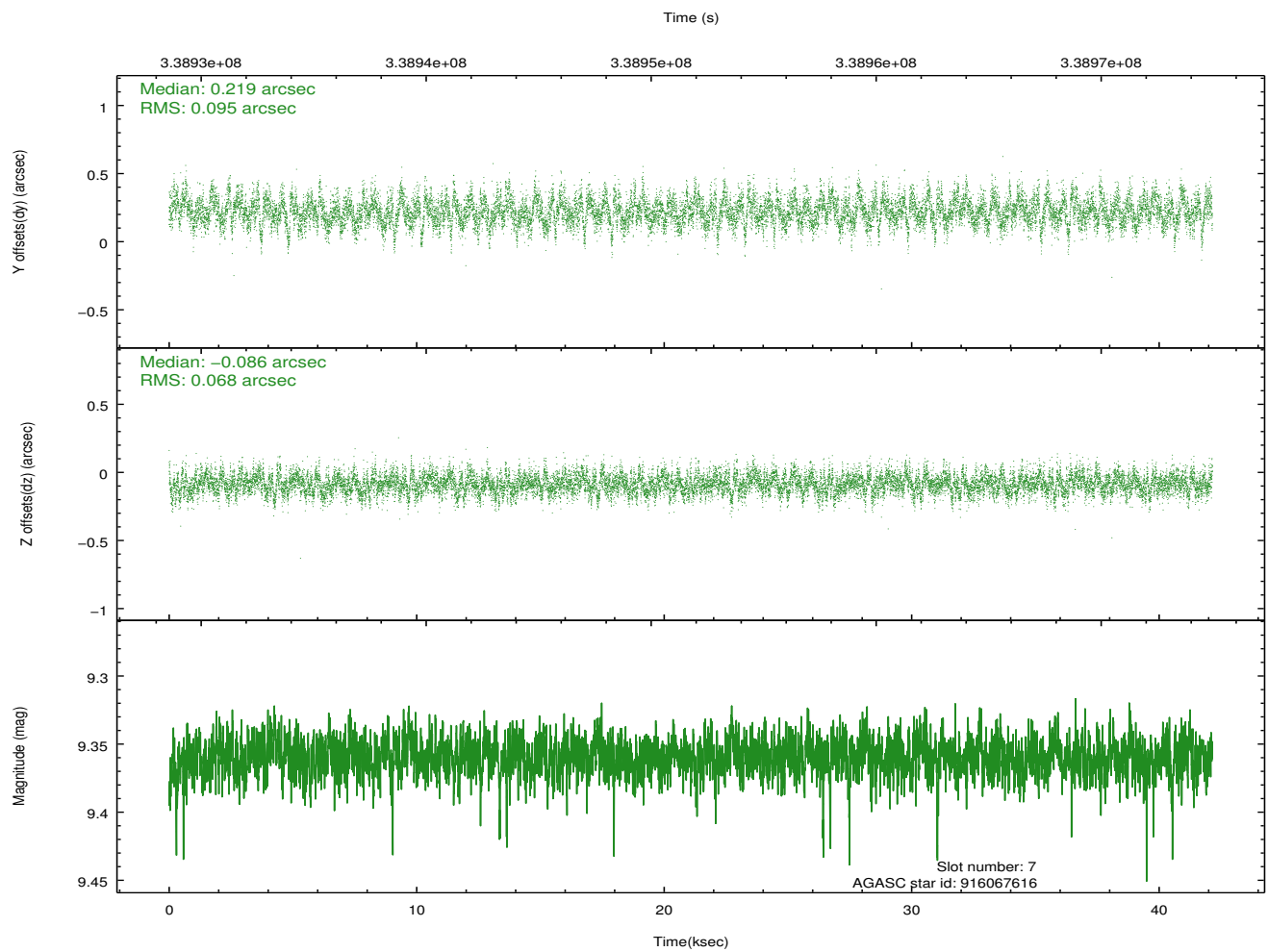
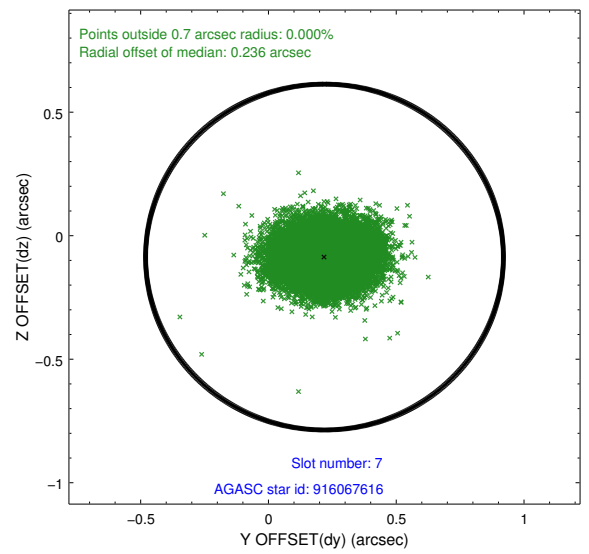
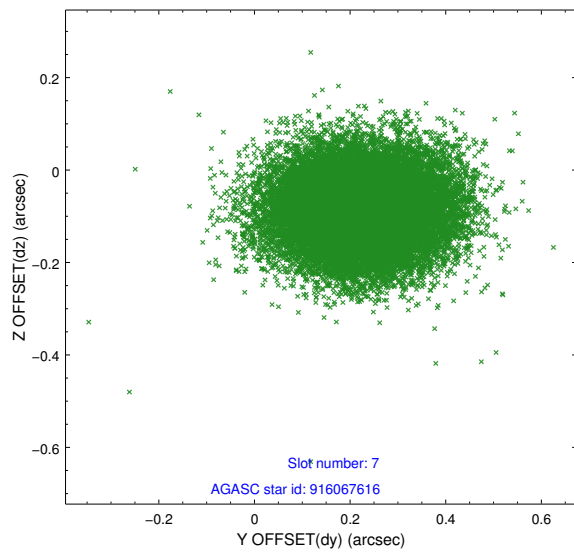
2.4.3 Slot 5



2.4.4 Slot 6

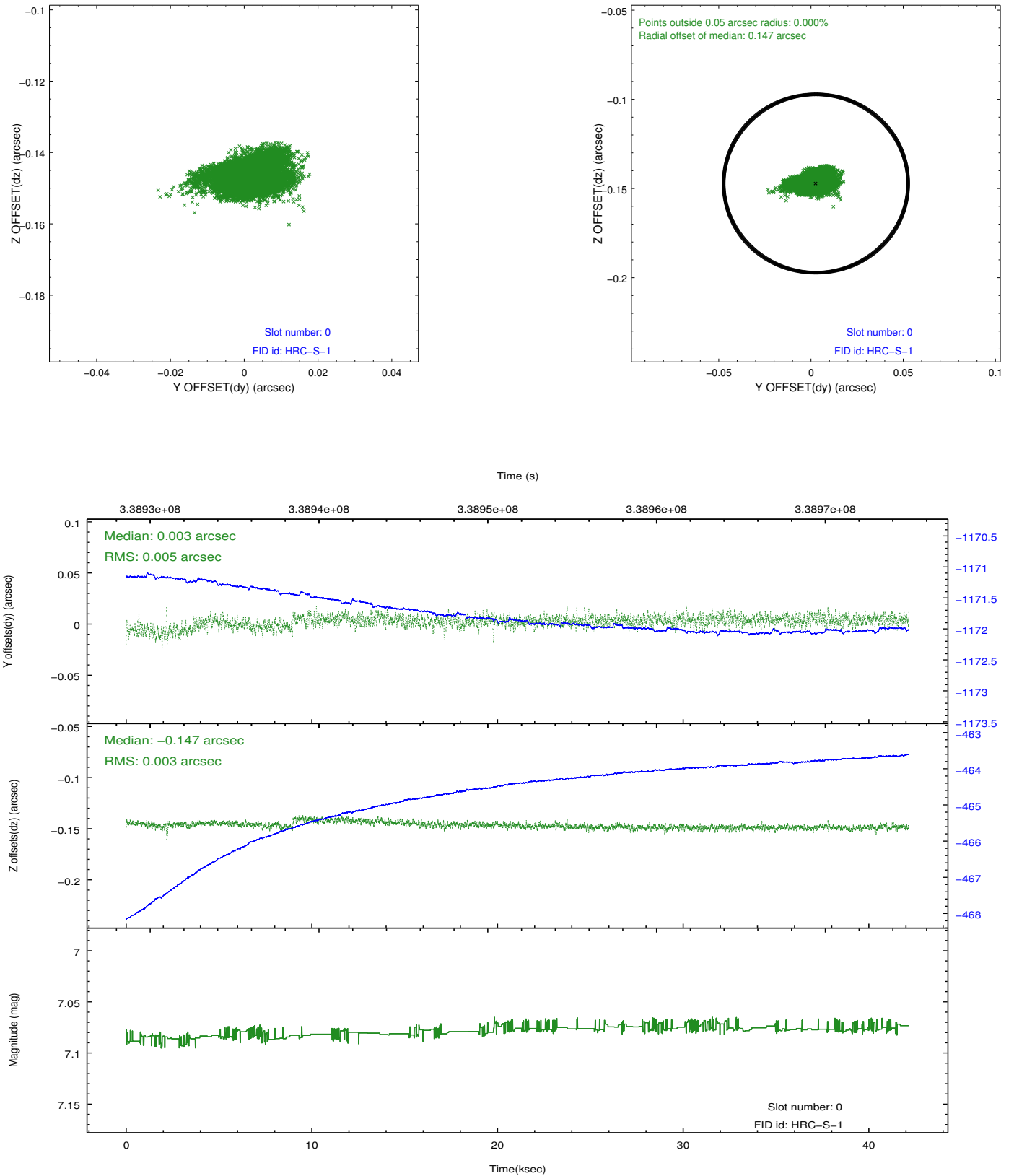


2.4.5 Slot 7

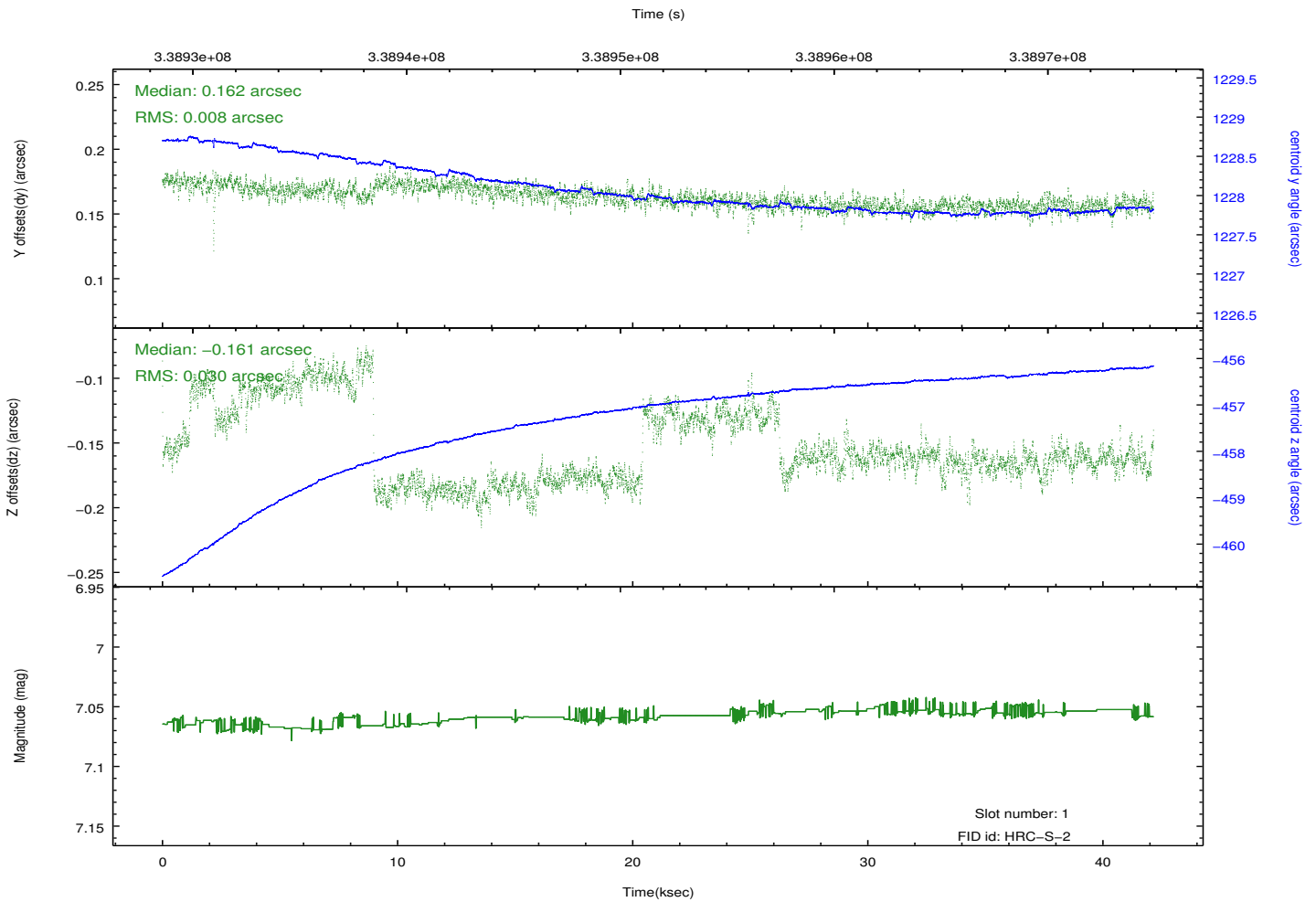
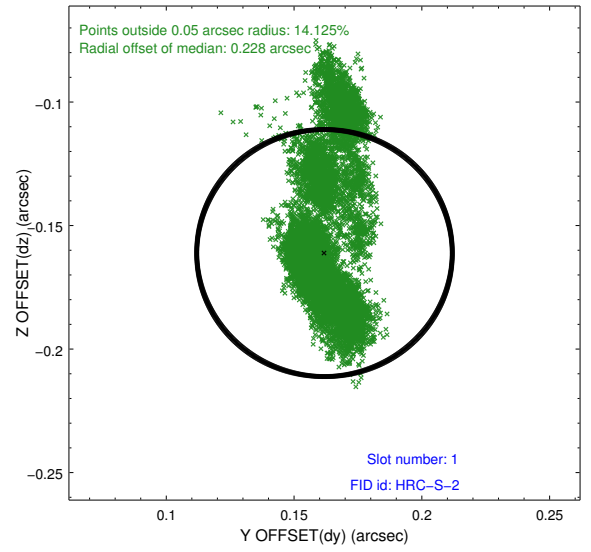
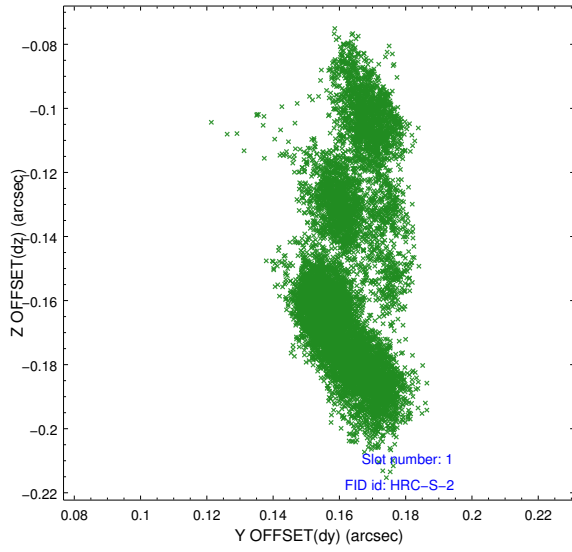


2.5 FID Slots

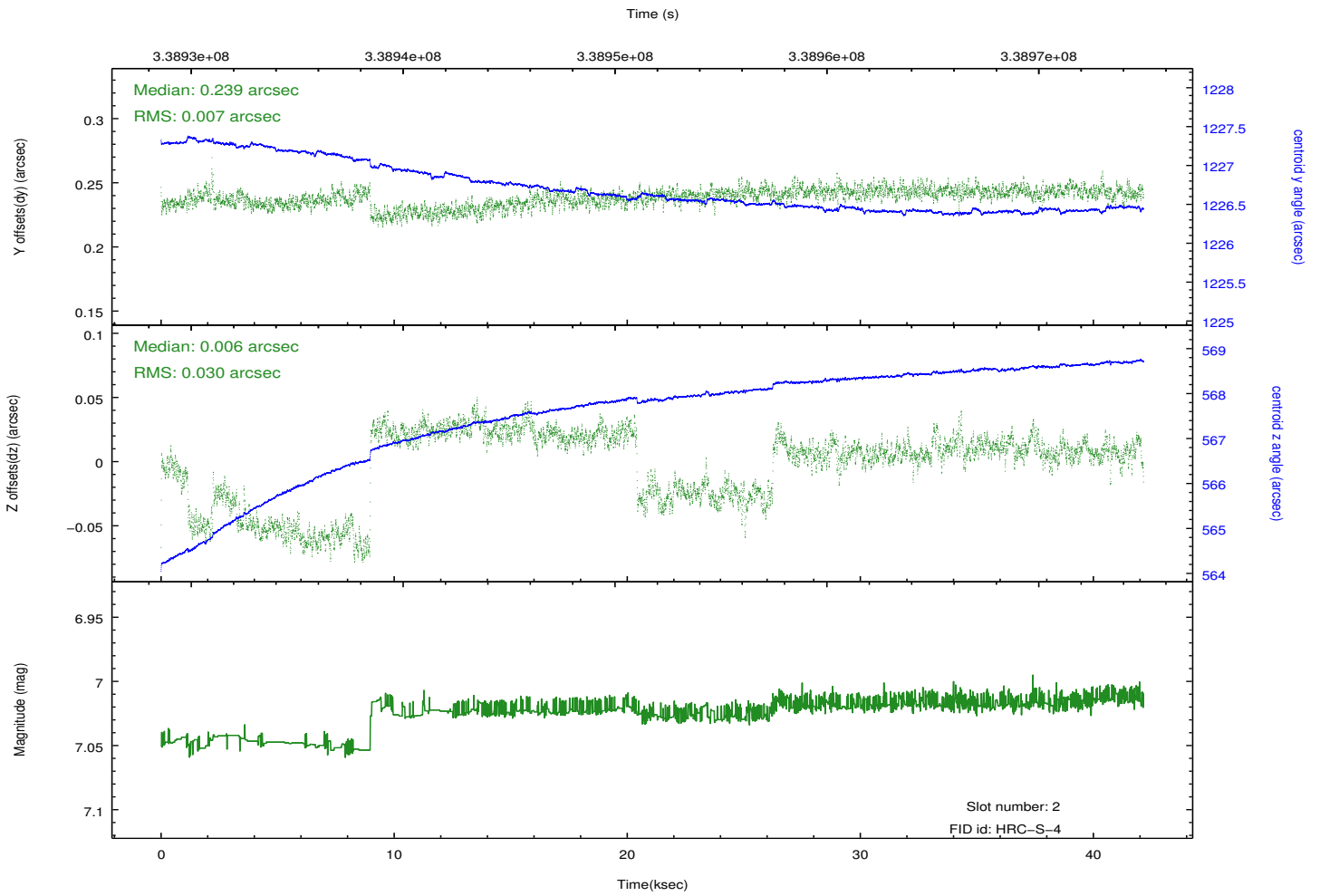
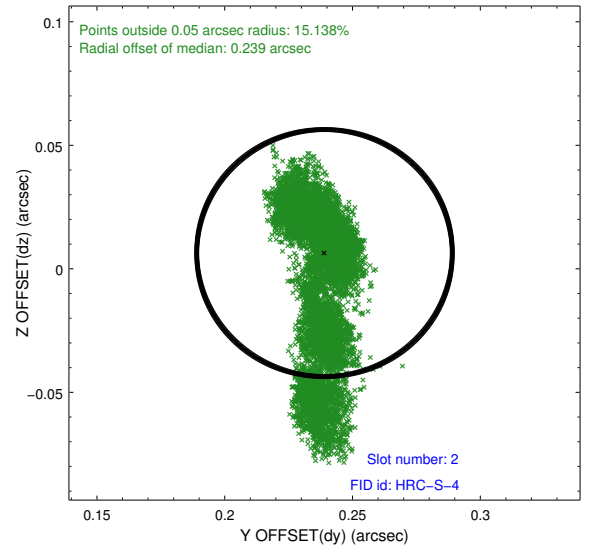
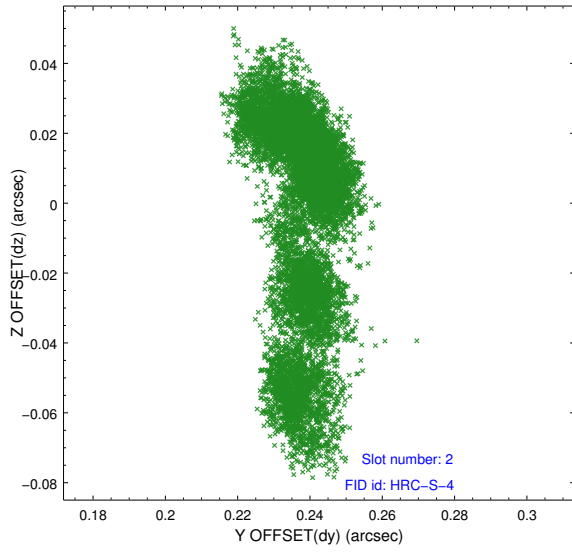
2.5.1 Slot 0



2.5.2 Slot 1

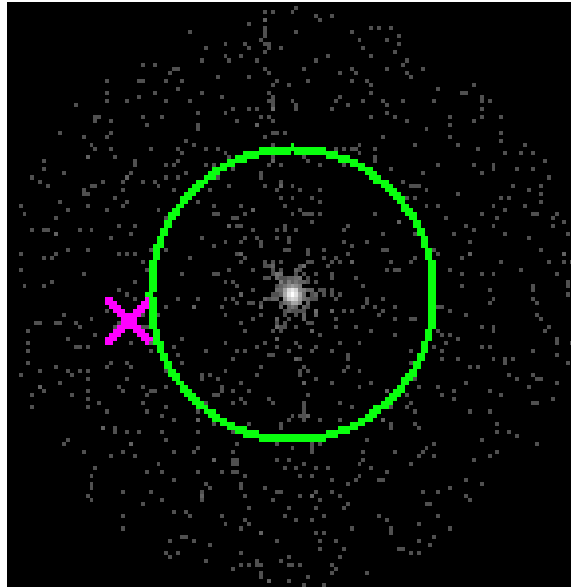


2.5.3 Slot 2

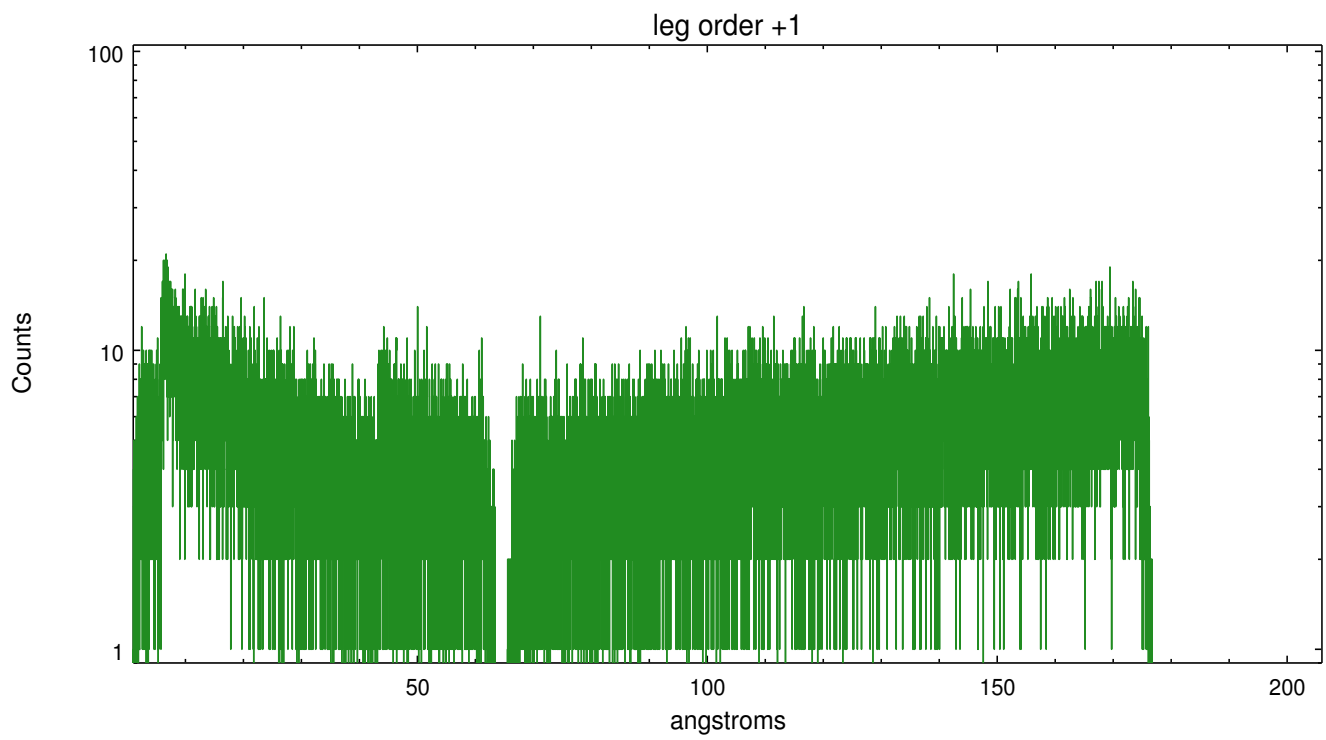
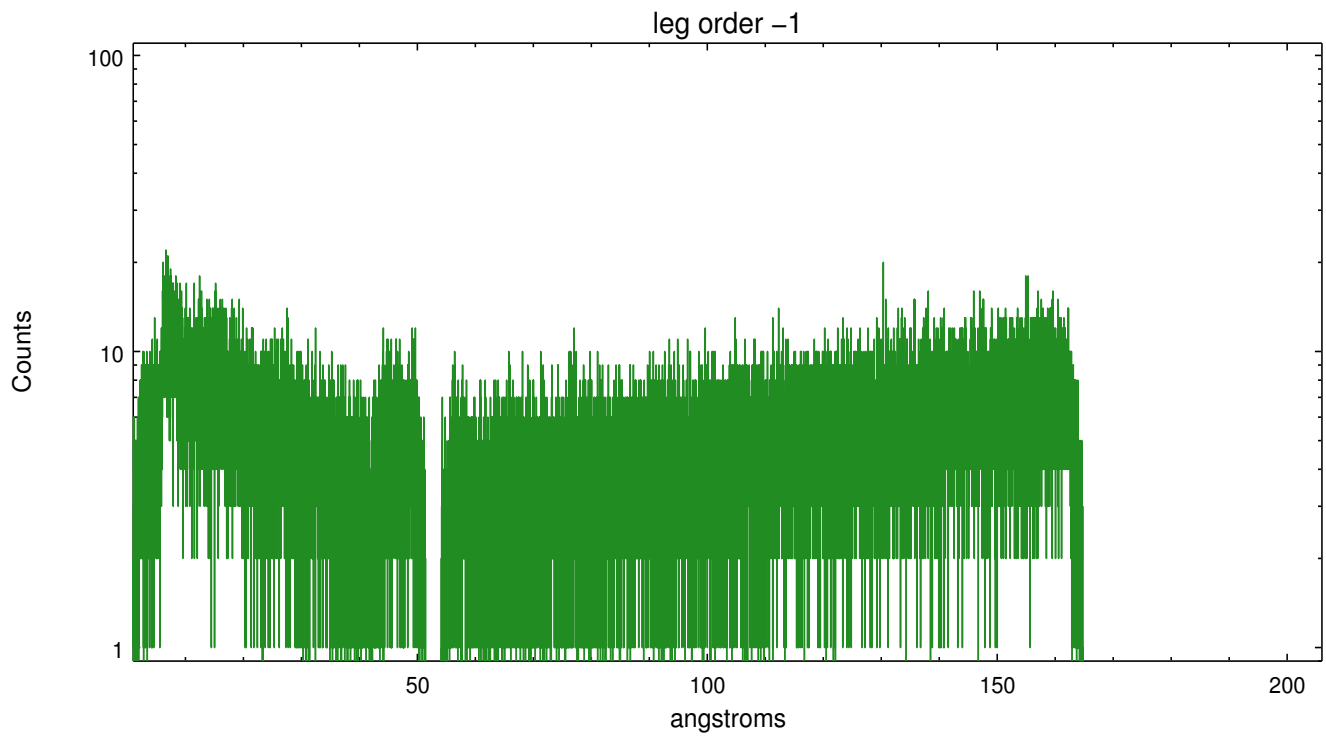


3 Gratings

3.1 LETG Arm



LETG Zero Order



A Summary

A.1 Status

V&V Scientist	Joy Nichols
V&V Date (YYYY-MM-DD)	2012.08.21
V&V Edition	1
V&V Disposition and Status	OK
V&V Charge Time	42.149027

A.2 Comments