

V&V Reference Report

L2 ASCDS Version : 8.4.5

Observation 10811 - L2 Version 2
Chandra X-Ray Center

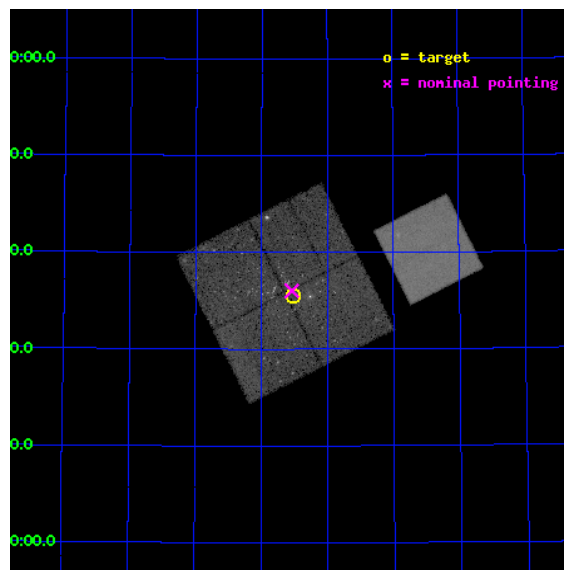
L2 Processing Date : Jun 6 2012

Contents

1	Front	2
2	OBI	3
2.1	OBI	3
2.1.1	Images	3
2.1.2	Bias	3
2.1.3	Parameters	4
2.1.4	Events	4
2.2	Compared Parameters	5
2.3	Aspect	6
2.4	Star Slots	9
2.4.1	Slot 3	9
2.4.2	Slot 4	10
2.4.3	Slot 5	11
2.4.4	Slot 6	12
2.4.5	Slot 7	13
2.5	FID Slots	14
2.5.1	Slot 0	14
2.5.2	Slot 1	15
2.5.3	Slot 2	16
A	Summary	17
A.1	Status	17
A.2	Comments	17

1 Front

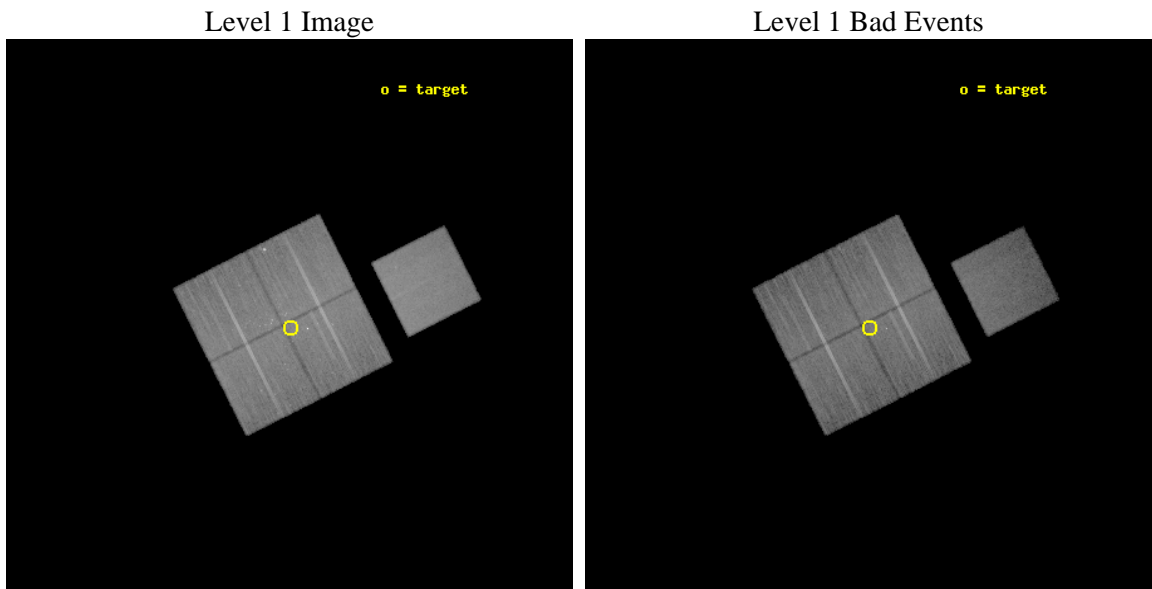
seq_num	200535	Sequence number
obs_id	10811	Observation id
title	Evolution of Young Stars in the Large Massive Cluster Cep OB3b	Pro
observer	Mr. Thomas Allen	Principal investigator
object	V454 Cep sub-cluster	Source name
dtcycle	0	
cycle	P	events from which exps? Prim/Second/Both
ra_targ	343.382083	Observer's specified target RA [deg]
dec_targ	62.592611	Observer's specified target Dec [deg]
ra_nom	343.38496810145	Nominal RA [deg]
dec_nom	62.600568172759	Nominal Dec [deg]
roll_nom	63.206125340201	Nominal Roll [deg]
revision	2	Processing version of data
ontime	24722.418259561	Sum of GTIs [s]
livetime	24399.40166462	Livetime [s]
ontime0	24728.700190187	Sum of GTIs [s]
ontime1	24722.418249428	Sum of GTIs [s]
ontime2	24725.559229791	Sum of GTIs [s]
ontime3	24722.418259561	Sum of GTIs [s]
ontime7	24728.700190187	Sum of GTIs [s]
l2events	196161	Number of level 2 events



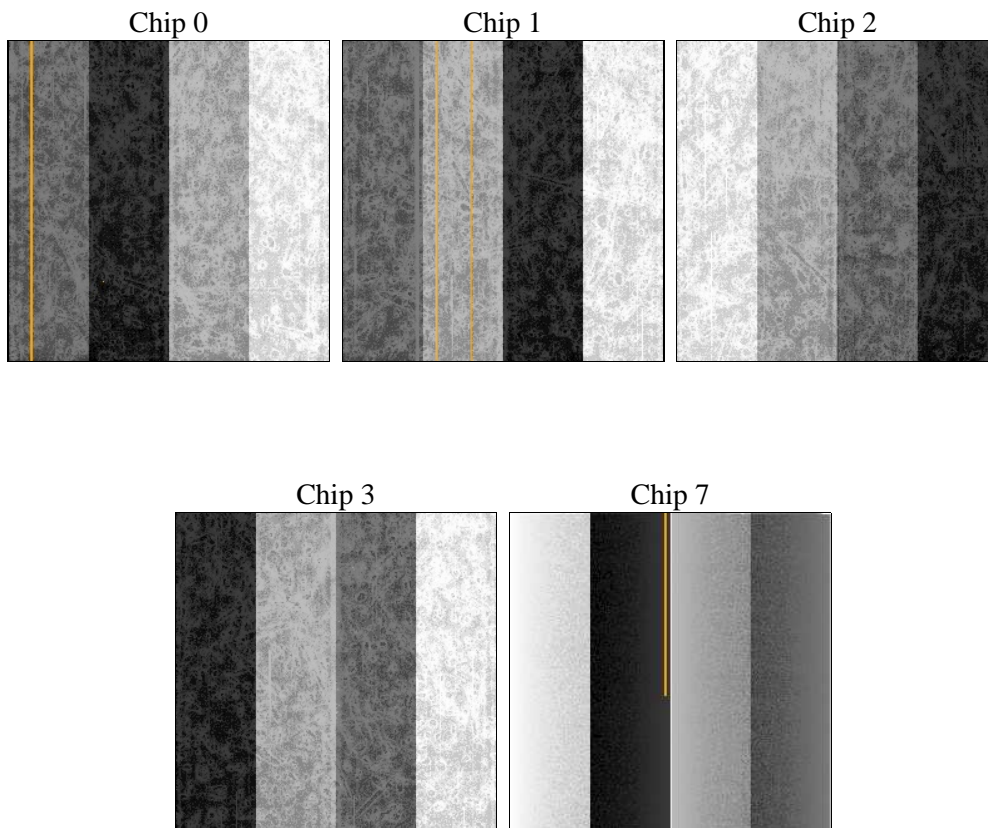
2 OBI

2.1 OBI

2.1.1 Images



2.1.2 Bias



2.1.3 Parameters

obi_num	0	Obi number	sched_exp_time	24701.118000	[s] Scheduled observation exposure time
ascdsver	8.4.5	Processing system revision	ontime	24722.418259561	Sum of GTIs [s]
caldbver	4.4.10	 	ontime0	24728.700190187	Sum of GTIs [s]
date	2012-06-06T03:20:31	Date and time of file creation	ontime1	24722.418249428	Sum of GTIs [s]
revision	2	Processing version of data	ontime2	24725.559229791	Sum of GTIs [s]
			ontime3	24722.418259561	Sum of GTIs [s]
			ontime7	24728.700190187	Sum of GTIs [s]
			l1events	1105610	Number of level 1 events

2.1.4 Events

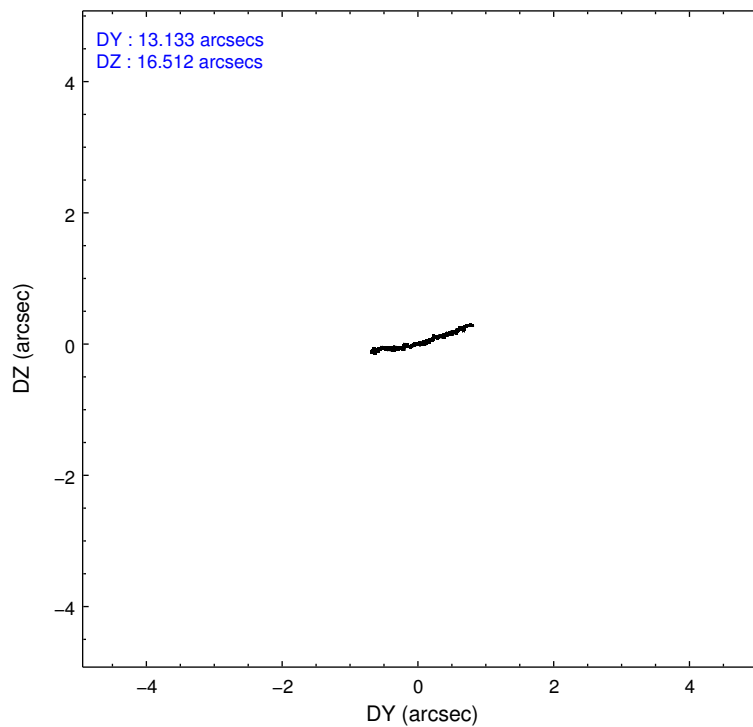
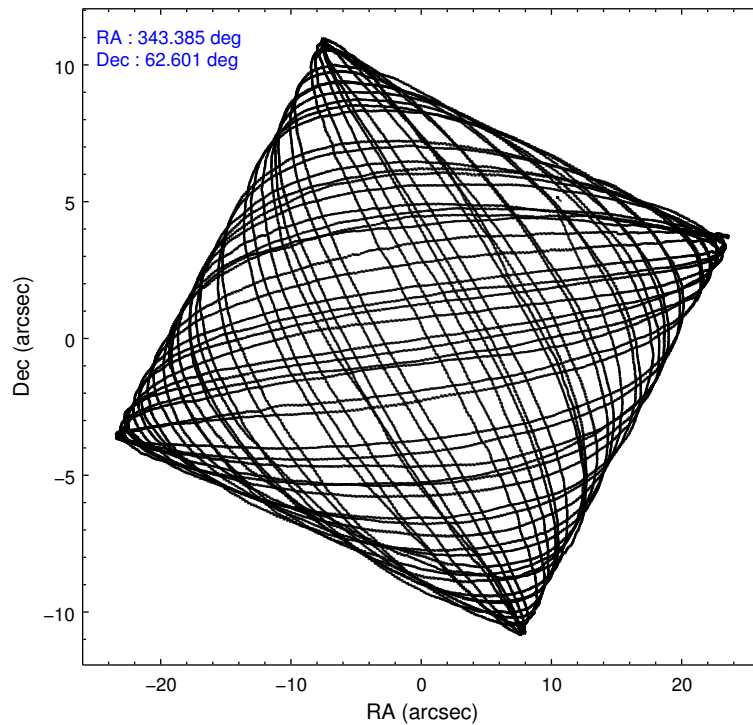
	ccd 0	ccd 1	ccd 2	ccd 3	ccd 7
level 1 events	208416	203755	226835	220048	246556
rejected events	182297	177421	201567	192905	135107
rejected %	87%	87%	88%	87%	54%

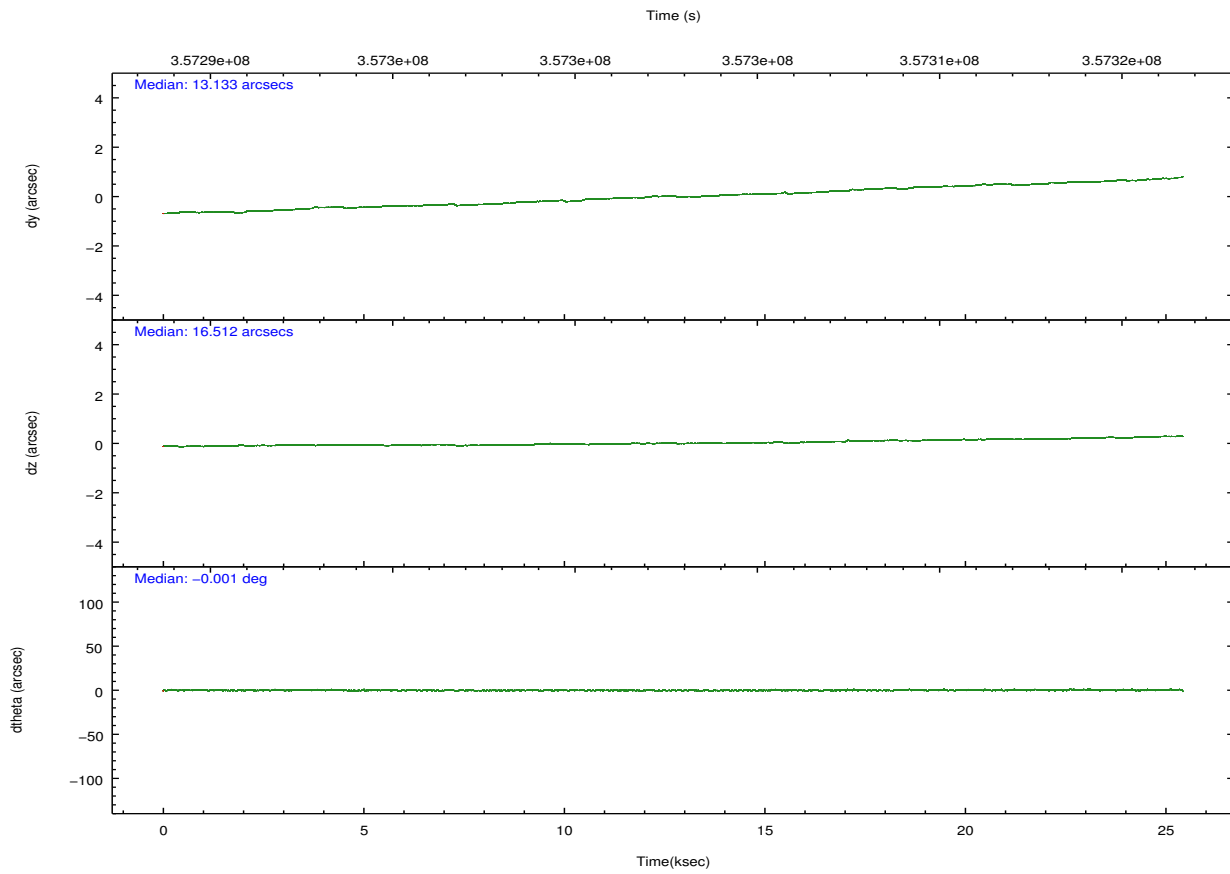
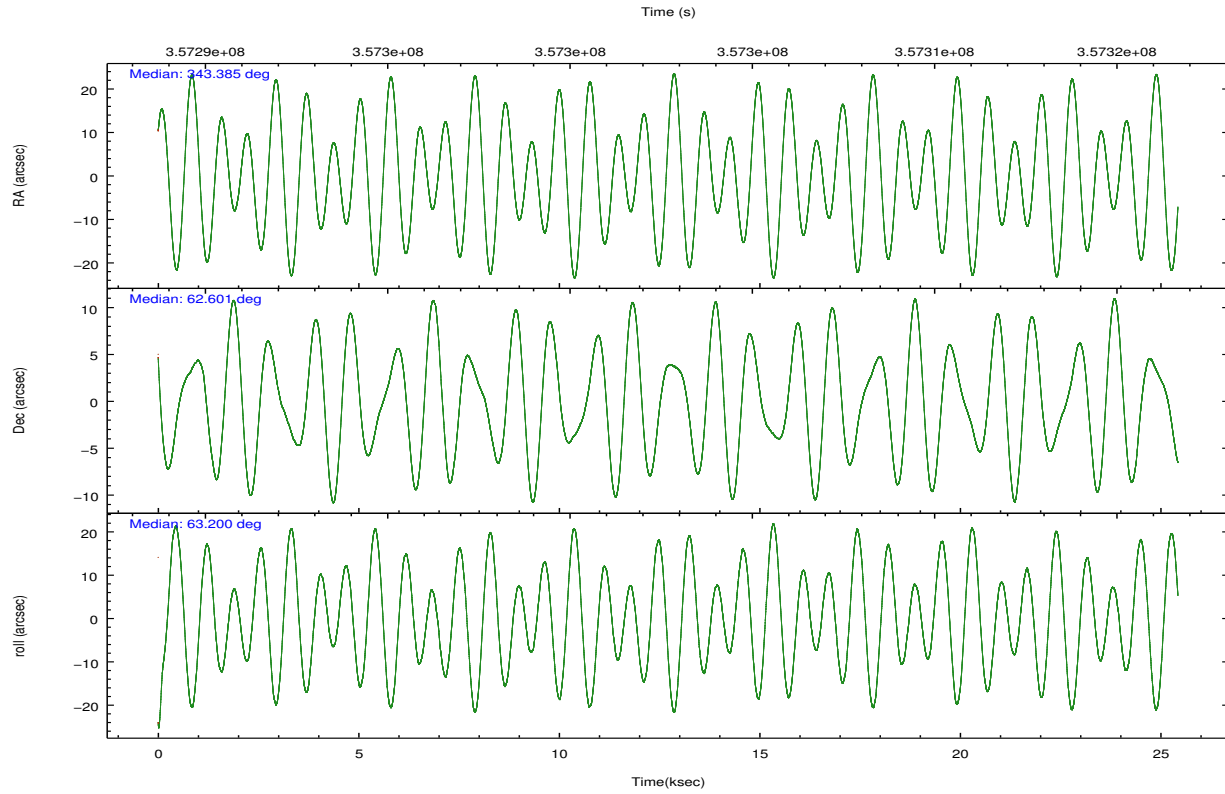
	ccd 0	ccd 1	ccd 2	ccd 3	ccd 7
grade 0 events	10984	10322	10452	11923	10061
	5%	5%	4%	5%	4%
grade 1 events	136	113	147	452	344
	0%	0%	0%	0%	0%
grade 2 events	5810	5905	5777	5408	22624
	2%	2%	2%	2%	9%
grade 3 events	2571	2638	2444	2662	10086
	1%	1%	1%	1%	4%
grade 4 events	2358	2575	2457	2663	9954
	1%	1%	1%	1%	4%
grade 5 events	7760	8452	7401	9055	25617
	3%	4%	3%	4%	10%
grade 6 events	4408	4901	4144	4492	58763
	2%	2%	1%	2%	23%
grade 7 events	174389	168849	194013	183393	109107
	83%	82%	85%	83%	44%

2.2 Compared Parameters

Parameter	Planned	Actual	Parameter	Planned	Actual
Instrument	ACIS	ACIS	Obspar format version number	7	7
Detector	ACIS-012367	ACIS-01237	Obspar file type	PREDICTED	ACTUAL
Grating	NONE	NONE	Obspar update status	NONE	UPDATED
Data mode	VFAINT	VFAINT	CCD I0 on	Y	Y
Observation mode	POINTING	POINTING	CCD I1 on	Y	Y
[deg] Pointing RA	343.388566	343.3849681014509	CCD I2 on	Y	Y
[deg] Pointing Dec	62.573143	62.60056817275884	CCD I3 on	Y	Y
[deg] Pointing Roll	62.994242	63.20612534020051	CCD S0 on	N	N
[mm] SIM focus pos	-0.782348	-0.7809083437167272	CCD S1 on	N	N
[mm] SIM defocus	0	0.001439871863259334	CCD S2 on	O1	N
[mm] SIM translation stage pos	-233.592463	-233.5874344608287	CCD S3 on	O2	Y
[mm] SIM translation stage offset	0	-0.005018542100998502	CCD S4 on	N	N
[s] Observation start time (MET)	357290707.184000	357289504.60069	CCD S5 on	N	N
Observation start date	2009-04-28T07:24:01	2009-04-28T07:05:04	Number of optional ACIS chips dropped	0	0
[s] Observation end time (MET)	357315408.184000	357315646.20199	On-chip summing requested	N	N
Observation end date	2009-04-28T14:15:42	2009-04-28T14:20:46	Subarray requested	NONE	NONE
Read mode	TIMED	TIMED	Alternating exposures requested	N	N
			[s] Primary exposure time	0.000000	3.1

2.3 Aspect



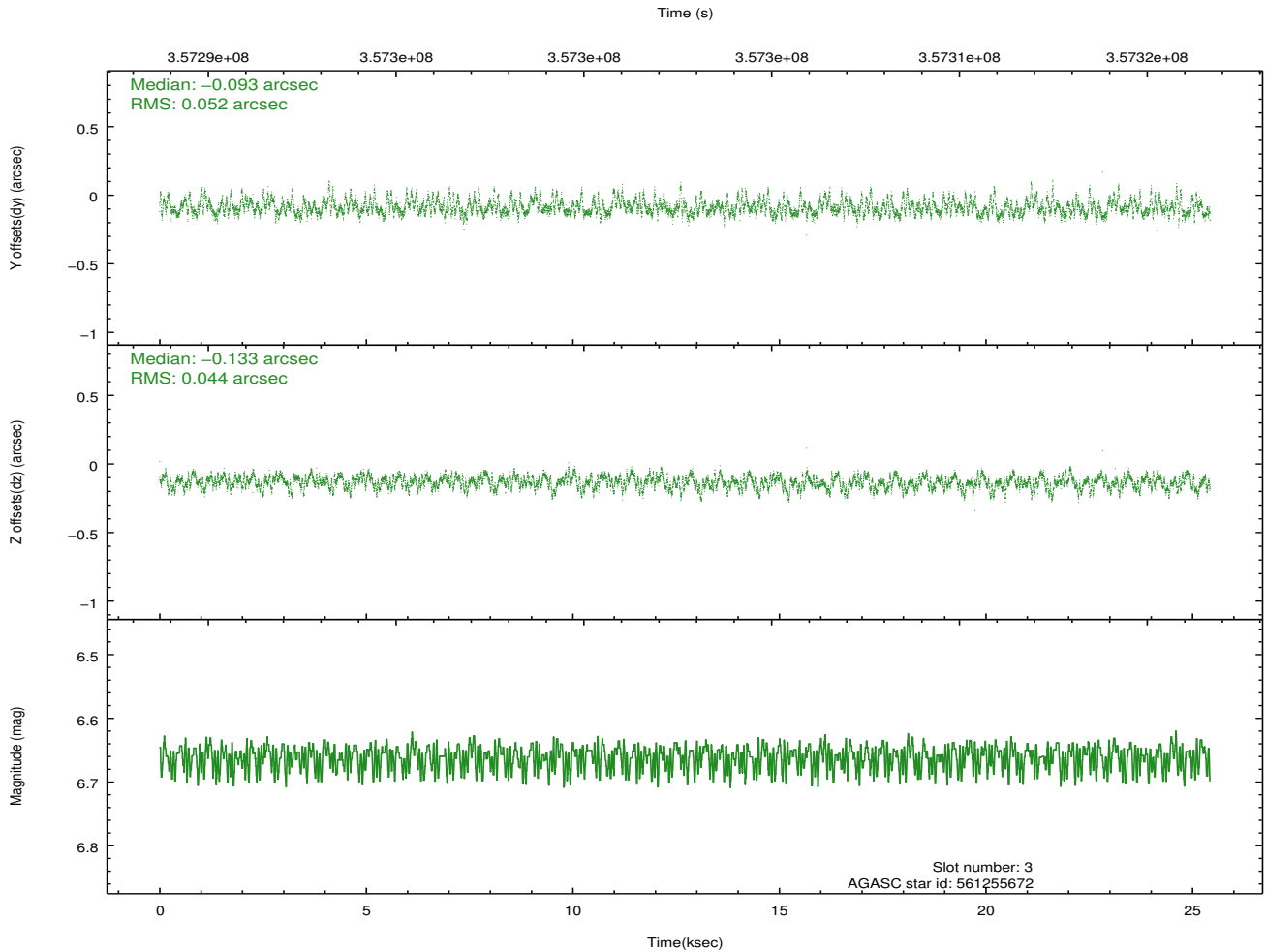
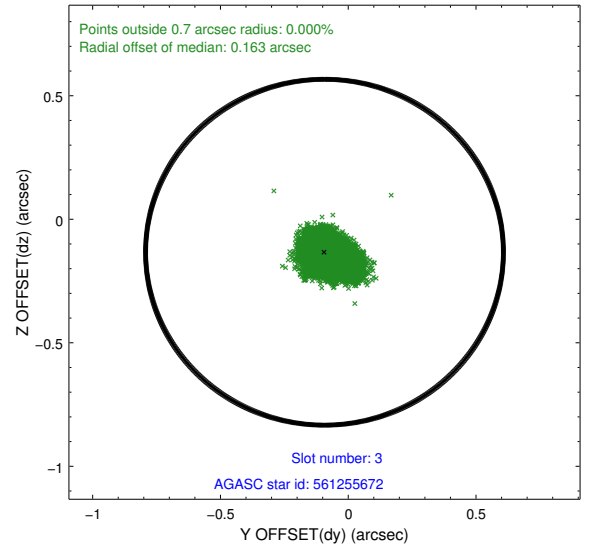
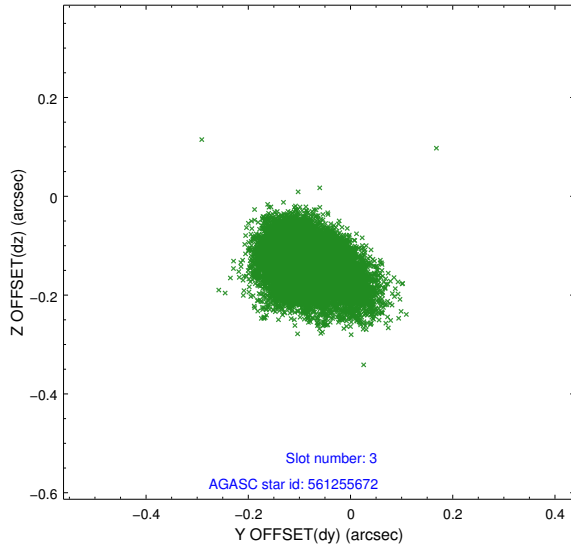


Slot Statistics

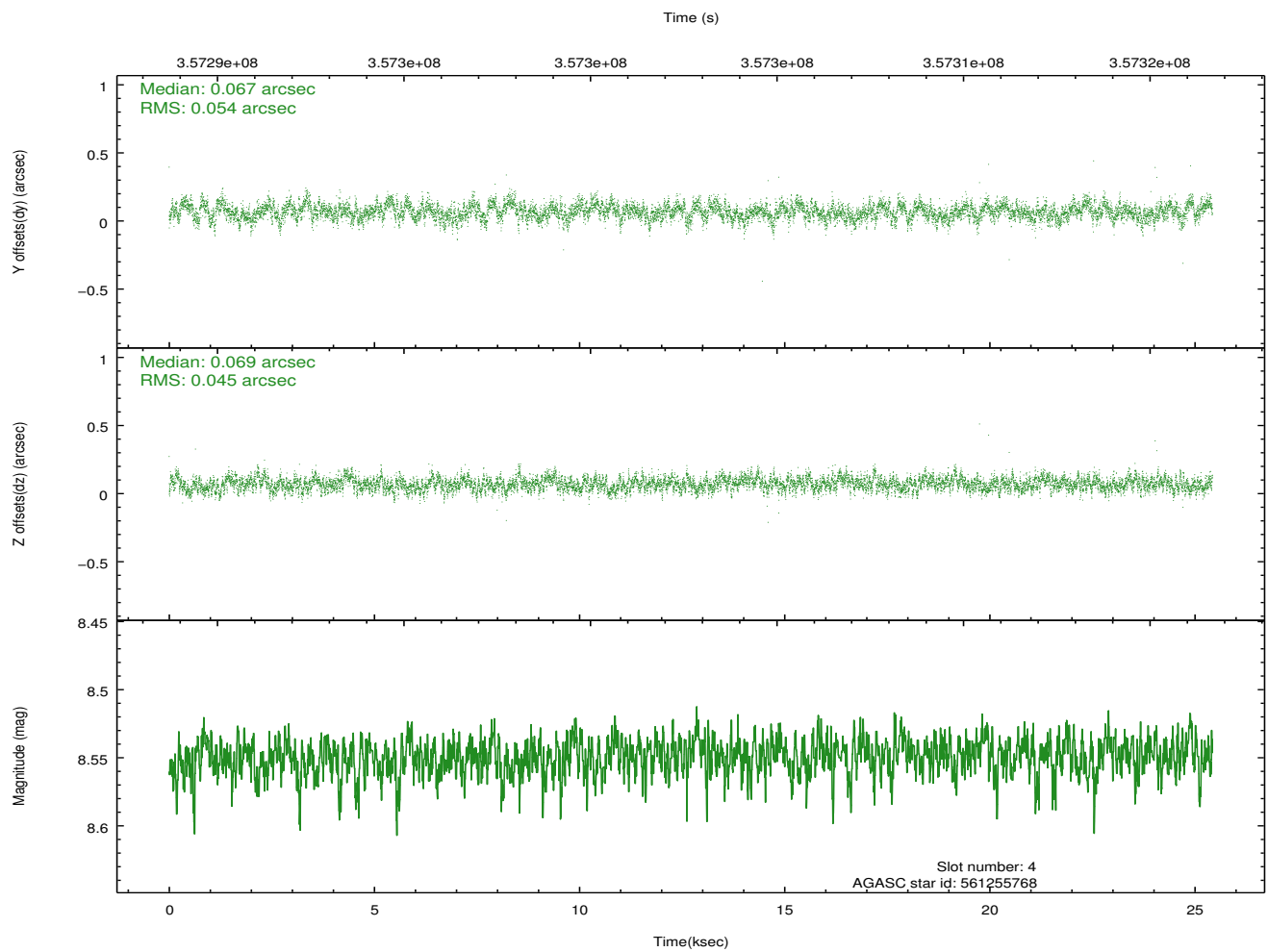
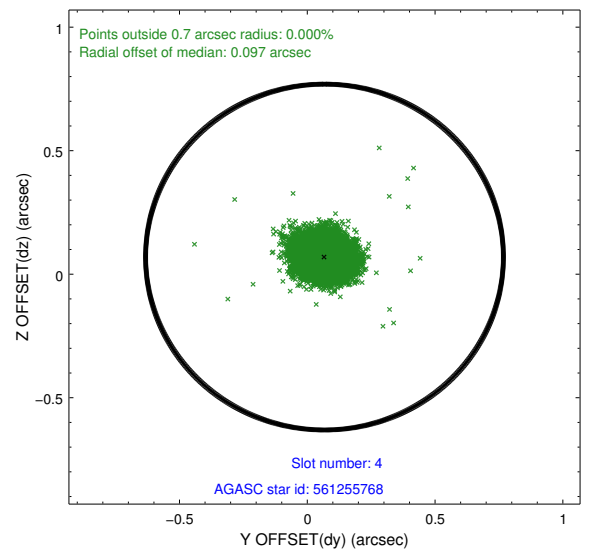
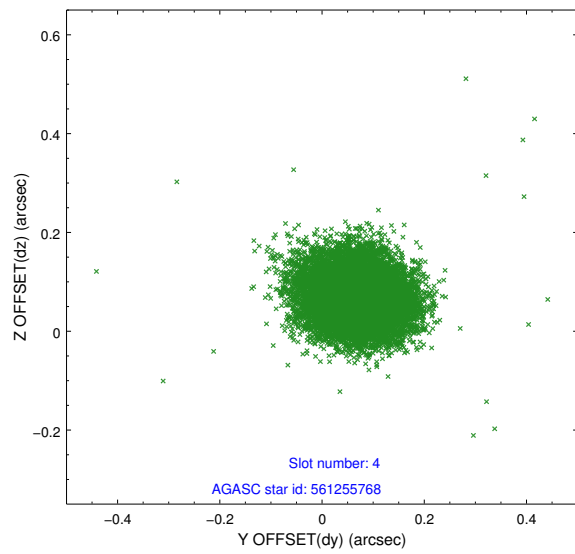
slot	status	id	mag	n_pts	med_dy	med_dz	dr1	dr2	ra	dec	mean_y	mean_z
0	FID	ACIS-I-1	7.03	6201	0.055	-0.029	0.010	0.015	0.000000	0.000000	926.42	-840.23
1	FID	ACIS-I-5	7.02	6200	-0.181	0.065	0.013	0.023	0.000000	0.000000	-1821.84	1057.34
2	FID	ACIS-I-6	7.02	6202	0.036	0.034	0.012	0.018	0.000000	0.000000	391.85	1701.91
3	GUIDE	561255672	6.66	12403	-0.093	-0.133	0.071	0.121	342.872792	62.972182	899.38	1405.46
4	GUIDE	561255768	8.55	12398	0.067	0.069	0.074	0.120	344.276311	63.031635	2139.36	-537.10
5	GUIDE	561256368	8.09	12403	0.050	0.031	0.070	0.110	343.926918	62.306341	-442.87	-1236.79
6	GUIDE	559549088	9.08	12389	0.093	0.120	0.117	0.177	342.401879	62.332768	-1508.57	1082.30
7	GUIDE	561253264	8.48	12397	-0.125	-0.085	0.068	0.110	342.997096	63.382252	2309.97	1886.63

2.4 Star Slots

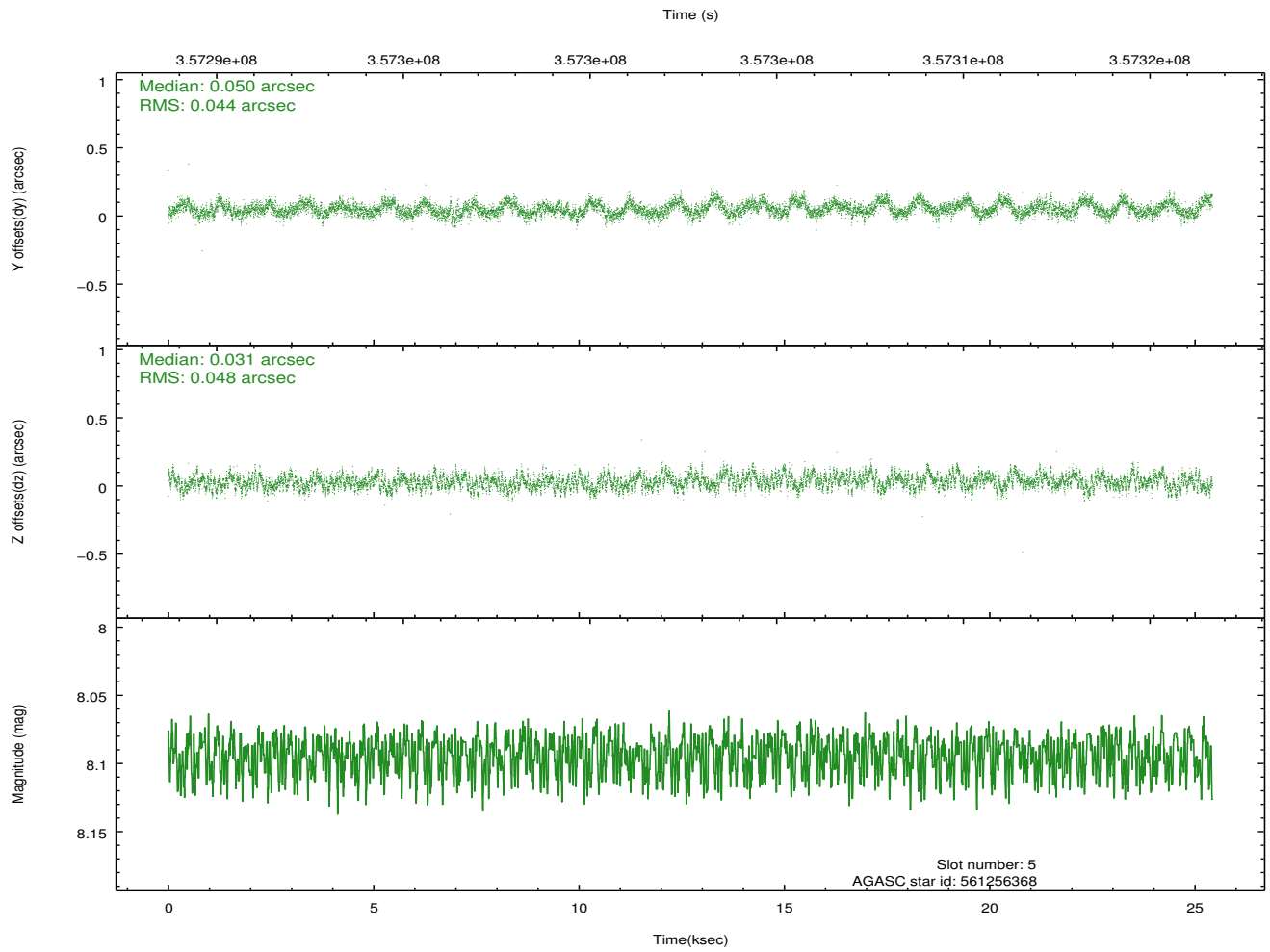
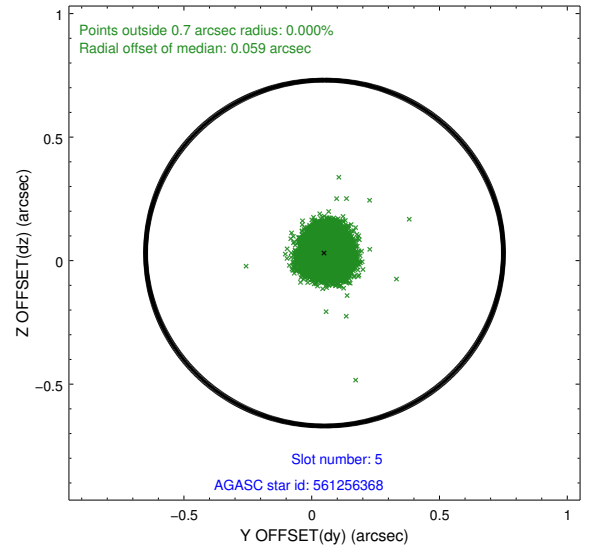
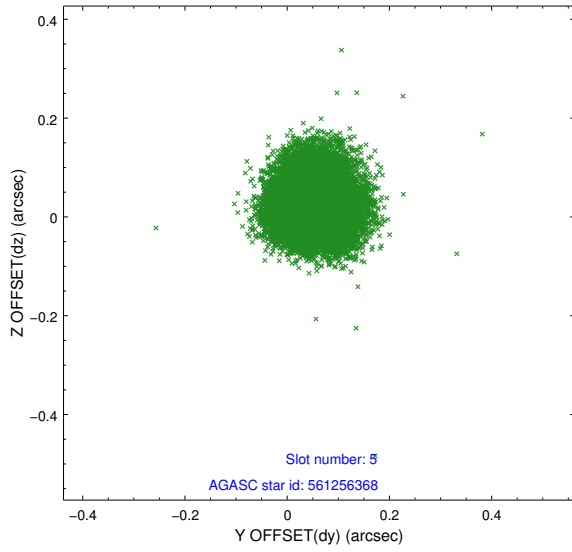
2.4.1 Slot 3



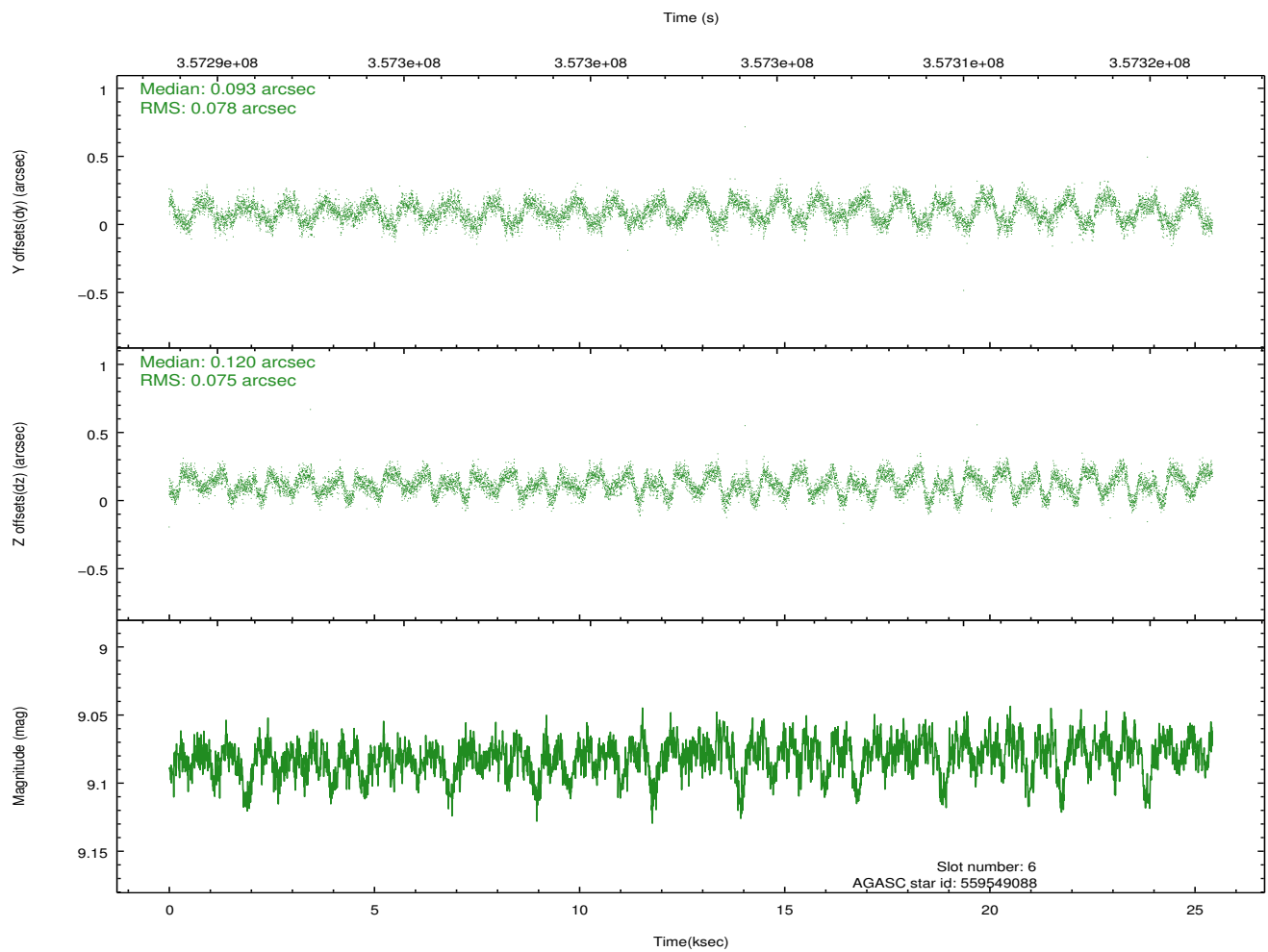
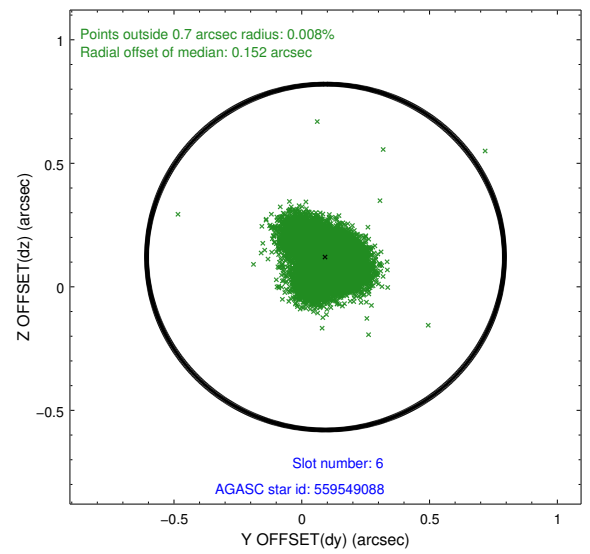
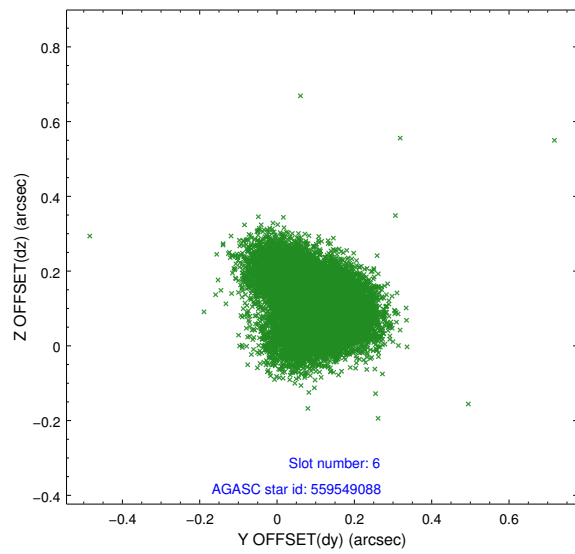
2.4.2 Slot 4



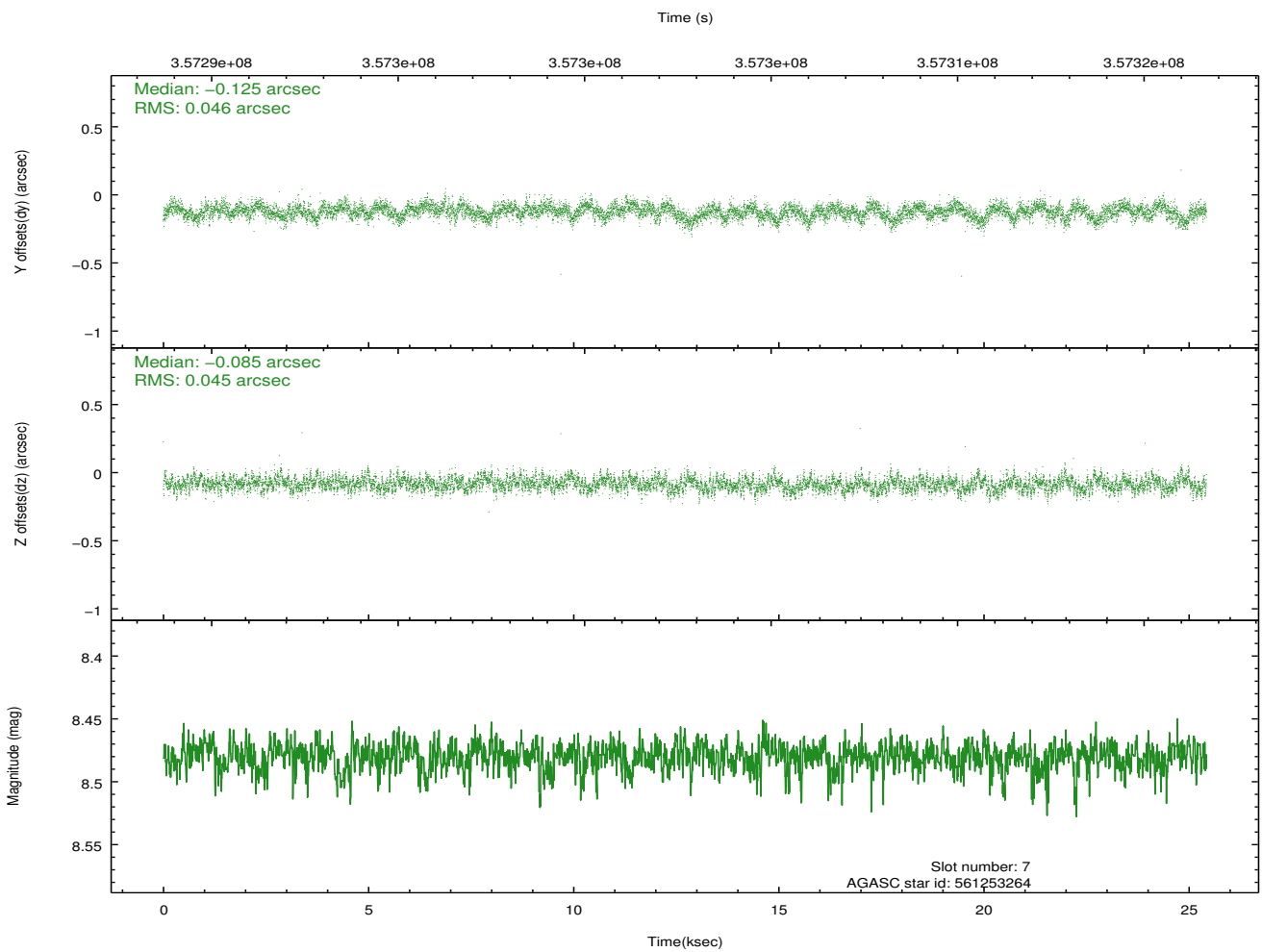
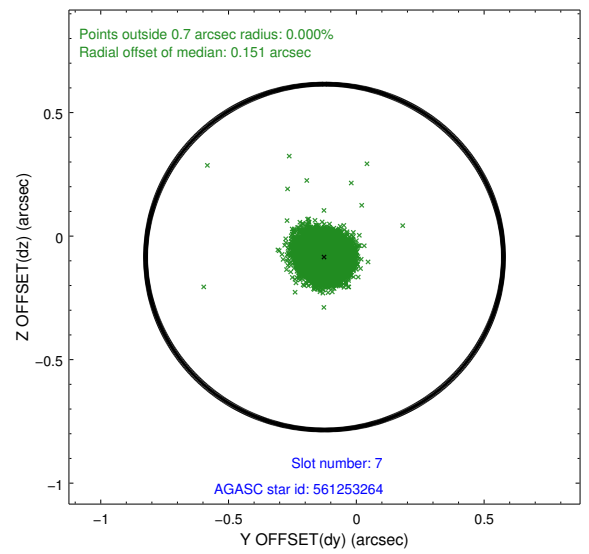
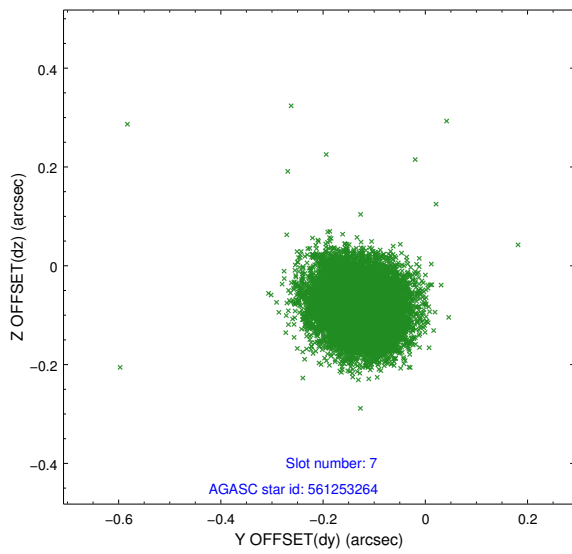
2.4.3 Slot 5



2.4.4 Slot 6

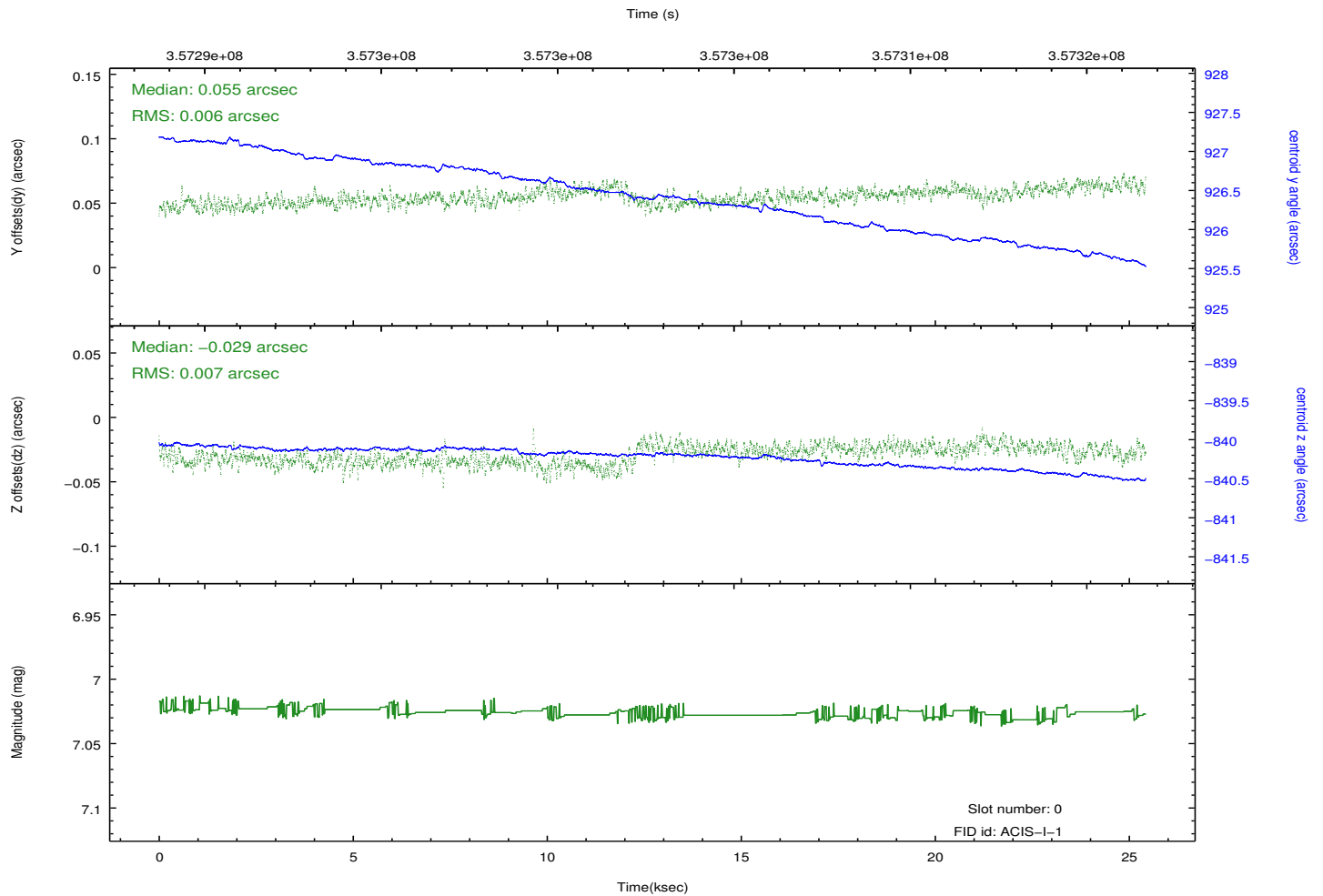
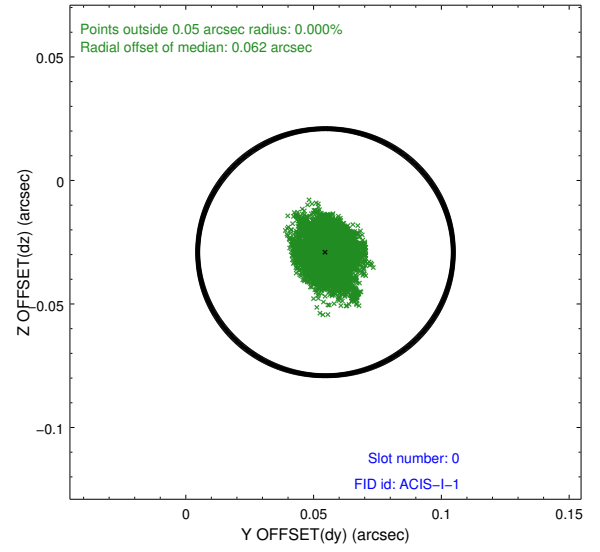
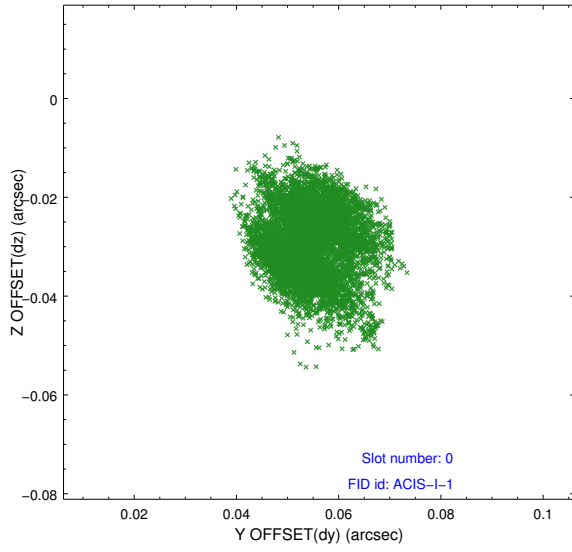


2.4.5 Slot 7

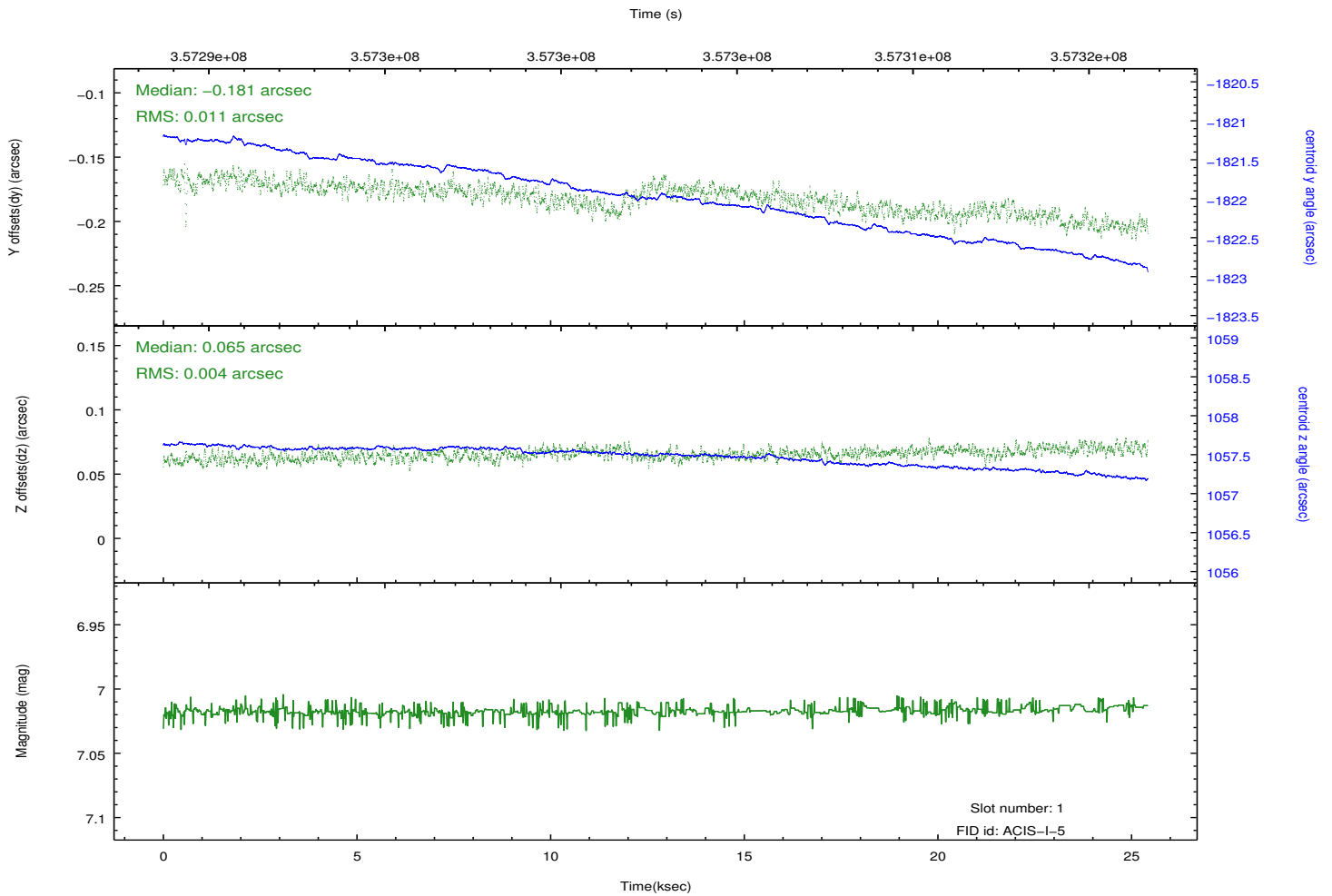
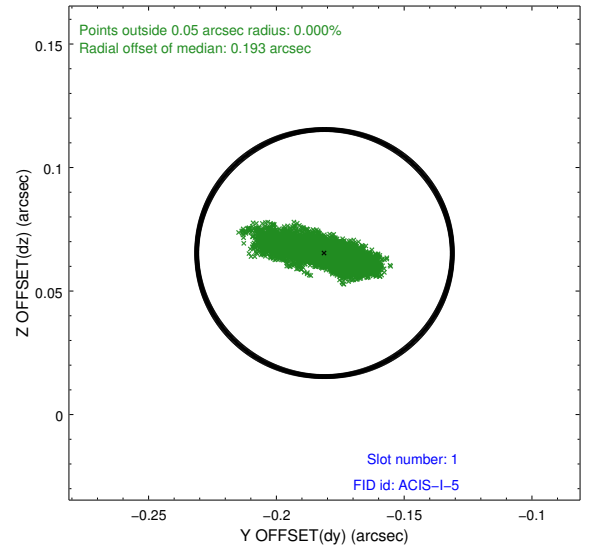
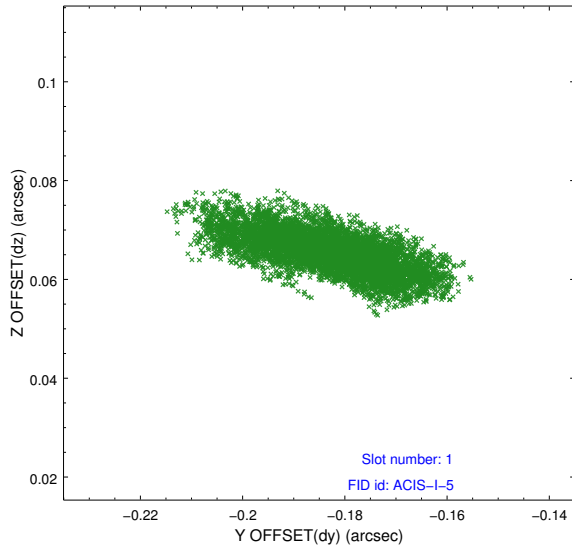


2.5 FID Slots

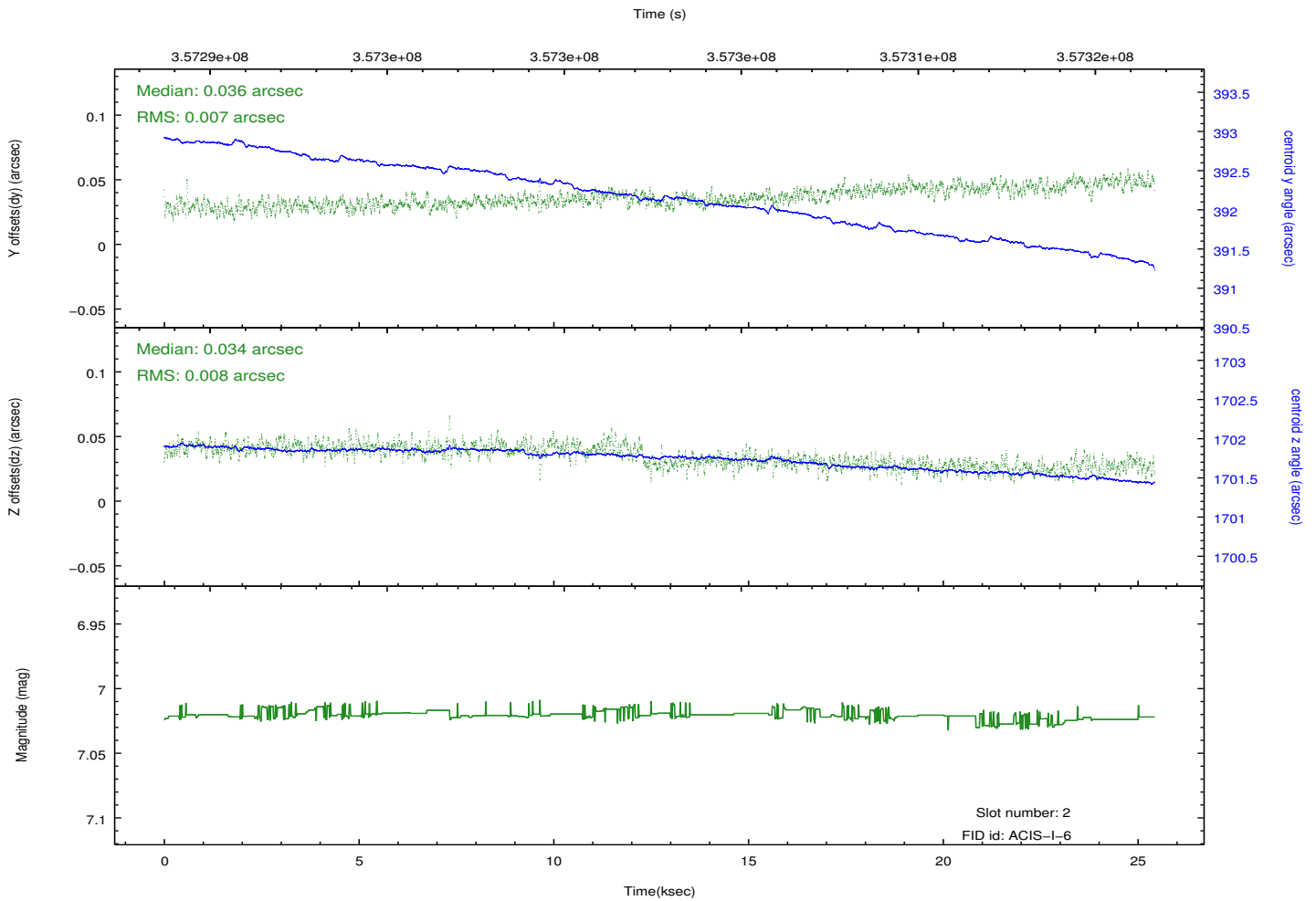
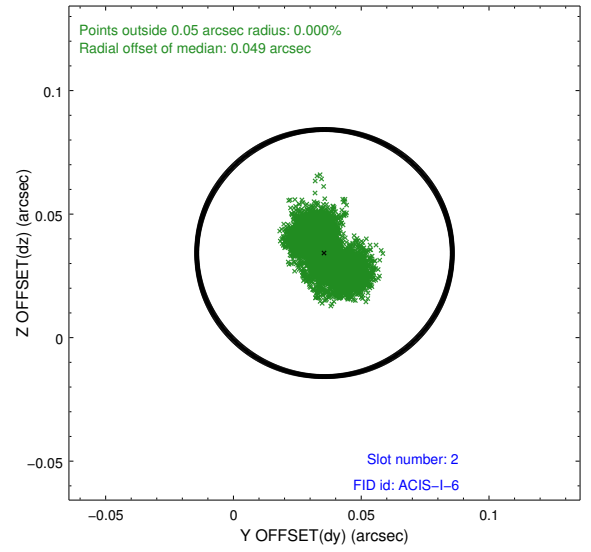
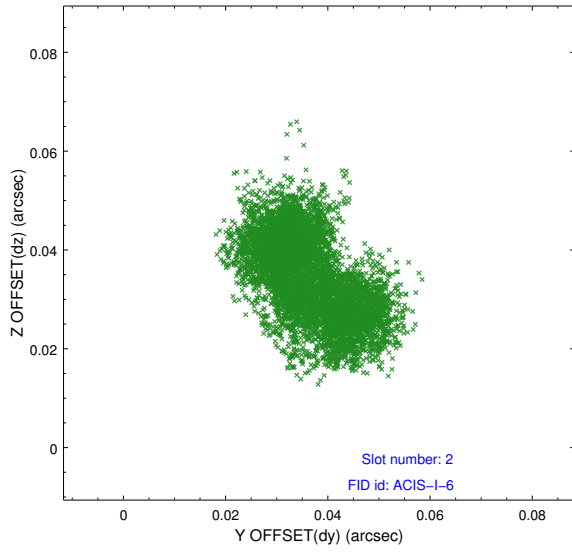
2.5.1 Slot 0



2.5.2 Slot 1



2.5.3 Slot 2



A Summary

A.1 Status

V&V Scientist	Jen Lauer
V&V Date (YYYY-MM-DD)	2012.06.08
V&V Edition	1
V&V Disposition and Status	OK
V&V Charge Time	24.7224182

A.2 Comments

Roll preference met. Roll is same as obsid 18012.