

V&V Reference Report

L2 ASCDS Version : 8.4.4

Observation 10841 - L2 Version 3
Chandra X-Ray Center

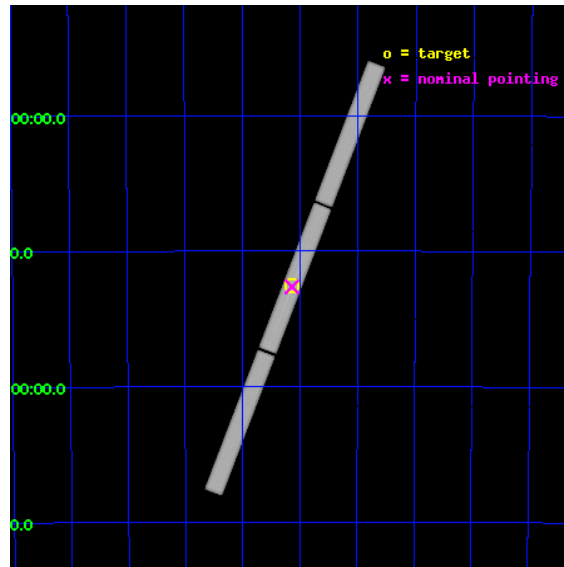
L2 Processing Date : Aug 13 2012

Contents

1	Front	2
2	OBI	3
2.1	OBI	3
2.1.1	Images	3
2.1.2	Parameters	4
2.1.3	Events	4
2.2	Compared Parameters	5
2.3	Aspect	6
2.4	Star Slots	9
2.4.1	Slot 3	9
2.4.2	Slot 4	10
2.4.3	Slot 5	11
2.4.4	Slot 6	12
2.4.5	Slot 7	13
2.5	FID Slots	14
2.5.1	Slot 0	14
2.5.2	Slot 1	15
2.5.3	Slot 2	16
3	Gratings	17
3.1	LETG Arm	17
A	Summary	19
A.1	Status	19
A.2	Comments	19

1 Front

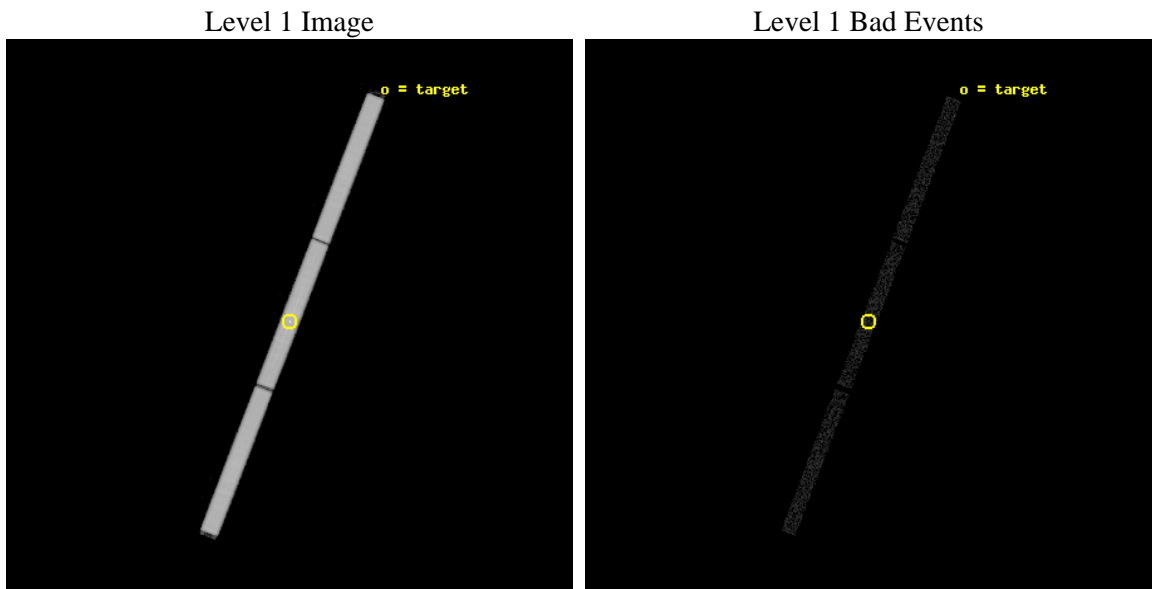
seq_num	900868	Sequence number
obs_id	10841	Observation id
title	A Benchmark Observation of the Warm-Hot Intergalactic Medium	Propo
observer	Dr. Taotao Fang	Principal investigator
object	H 2356-309	Source name
ra_targ	359.782917	Observer's specified target RA [deg]
dec_targ	-30.628056	Observer's specified target Dec [deg]
ra_nom	359.78489431377	Nominal RA [deg]
dec_nom	-30.632478737742	Nominal Dec [deg]
roll_nom	291.06835962135	Nominal Roll [deg]
revision	3	Processing version of data
ontime	15148.73199904	[s]
livetime	14989.521721153	Ontime multiplied by DTCOR
l2events	1350257	Number of level 2 events



2 OBI

2.1 OBI

2.1.1 Images



2.1.2 Parameters

obi_num	0	Obi number	sched_exp_time	15000.000000	[s] Scheduled observation exposure time
ascdsver	8.4.5	Processing system revision	ontime	15148.73199904	[s]
caldbver	4.5.1.1	 	l1events	1769339	Number of level 1 events
date	2012-08-13T01:39:45	Date and time of file creation			
revision	3	Processing version of data			

2.1.3 Events

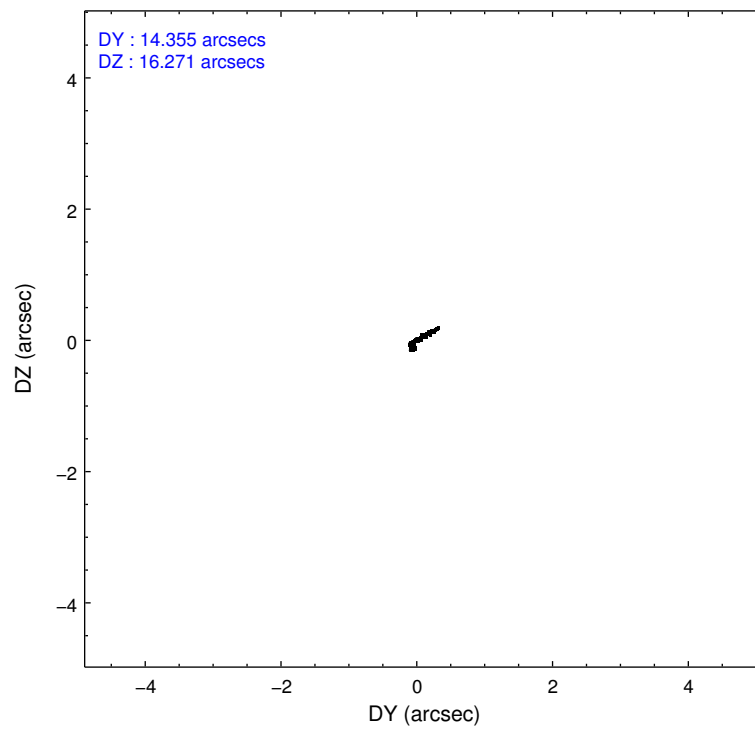
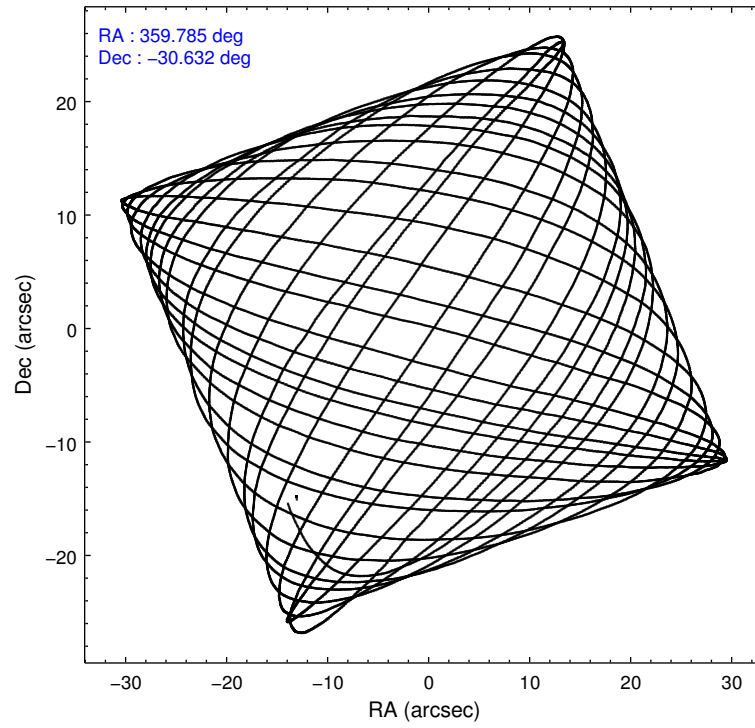
Level 1 Events

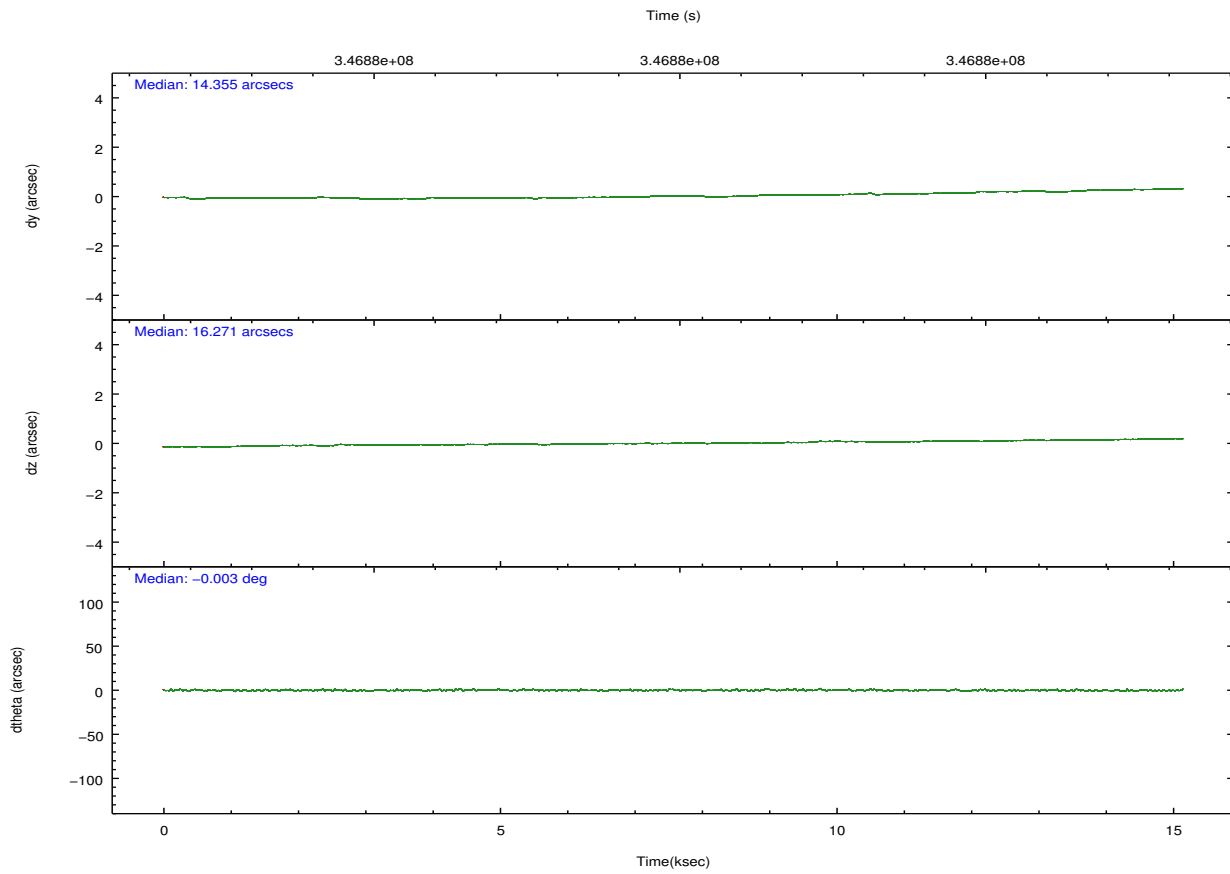
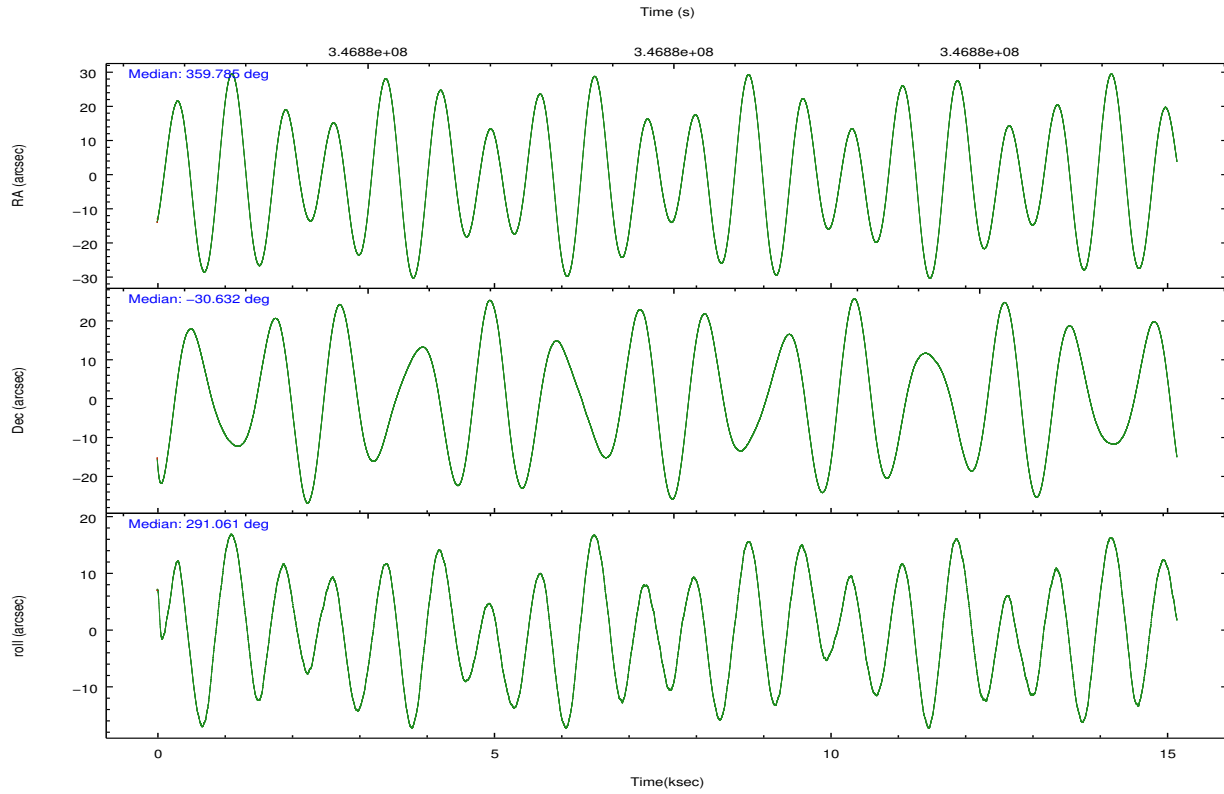
	segment 1	segment 2	segment 3
level 1 events	584342	597676	587321
rejected events	5238	5556	5420
rejected %	0%	0%	0%

2.2 Compared Parameters

Parameter	Planned	Actual	Parameter	Planned	Actual
Instrument	HRC	HRC	Obspar format version number	7	7
Detector	HRC-S	HRC-S	Obspar file type	PREDICTED	ACTUAL
Grating	LETG	LETG	Obspar update status	NONE	UPDATED
Data mode	OBSERVING	OBSERVING			
Observation mode	POINTING	POINTING			
[deg] Pointing RA	359.757870	359.7848943137686			
[deg] Pointing Dec	-30.615612	-30.63247873774199			
[deg] Pointing Roll	290.987247	291.0683596213489			
[mm] SIM focus pos	-1.429586	-1.428180813131781			
[mm] SIM defocus	0.1037507710433287	0.1051558262725154			
[mm] SIM translation stage pos	250.455976	250.466033080201			
[mm] SIM translation stage offset	0	-0.01005468664627074			
[s] Observation start time (MET)	346872458.184000	346870997.67113			
Observation start date	2008-12-28T17:26:33	2008-12-28T17:03:17			
[s] Observation end time (MET)	346887458.184000	346888402.17199			
Observation end date	2008-12-28T21:36:33	2008-12-28T21:53:22			

2.3 Aspect



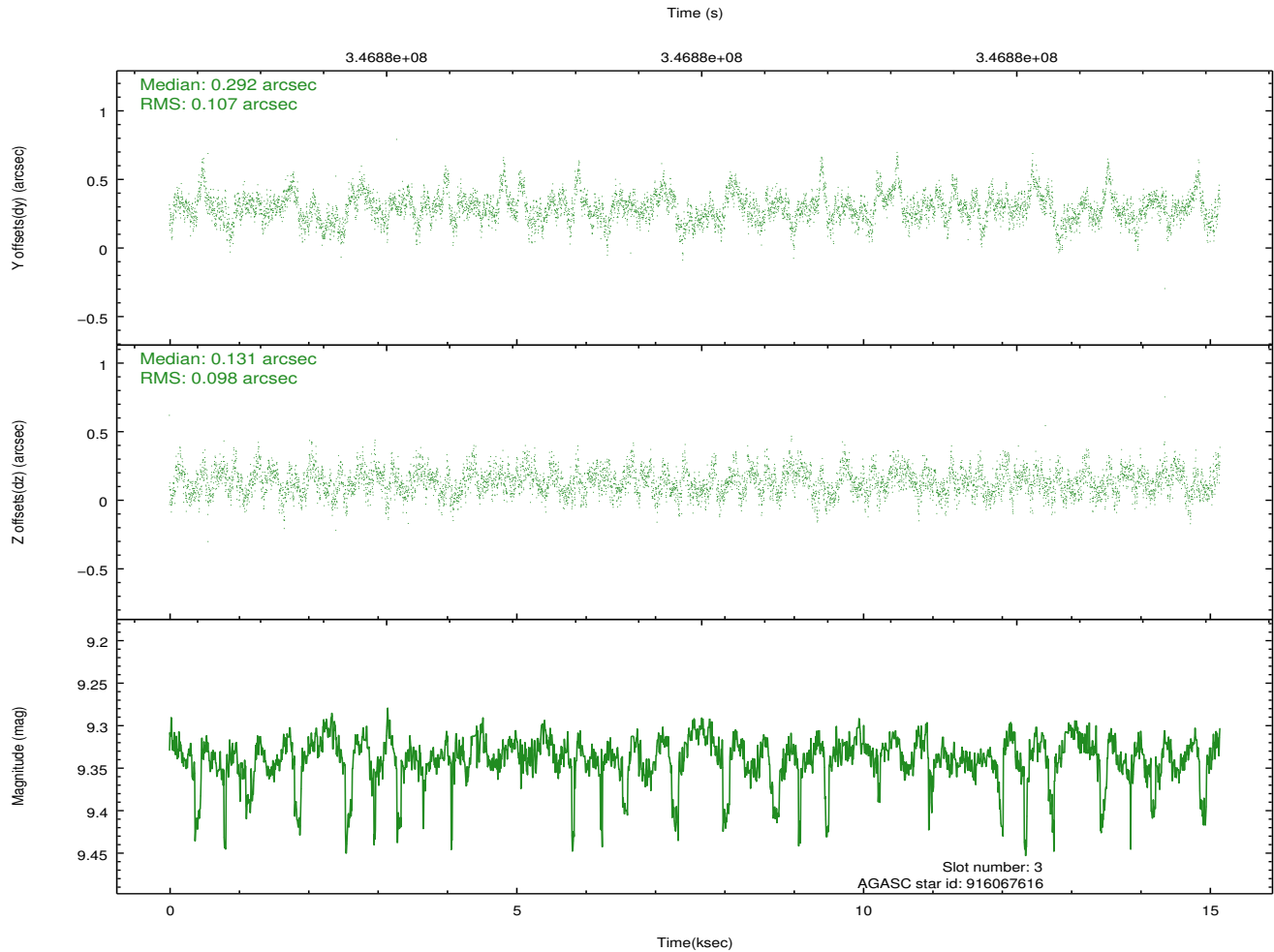
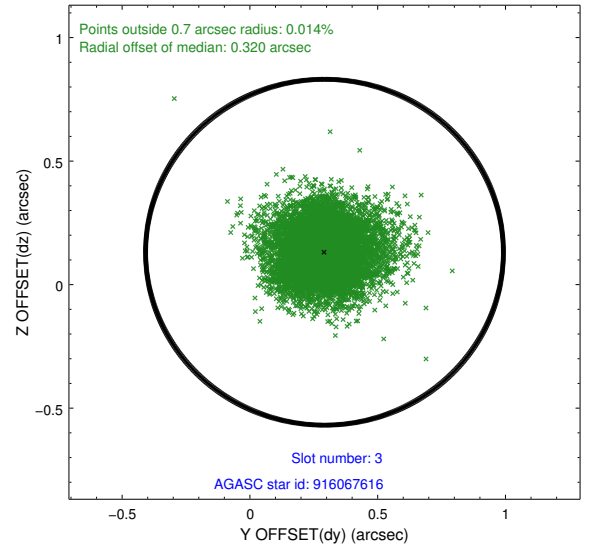
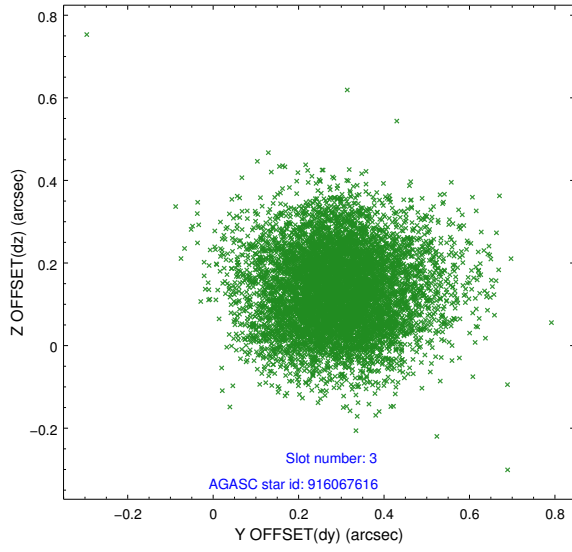


Slot Statistics

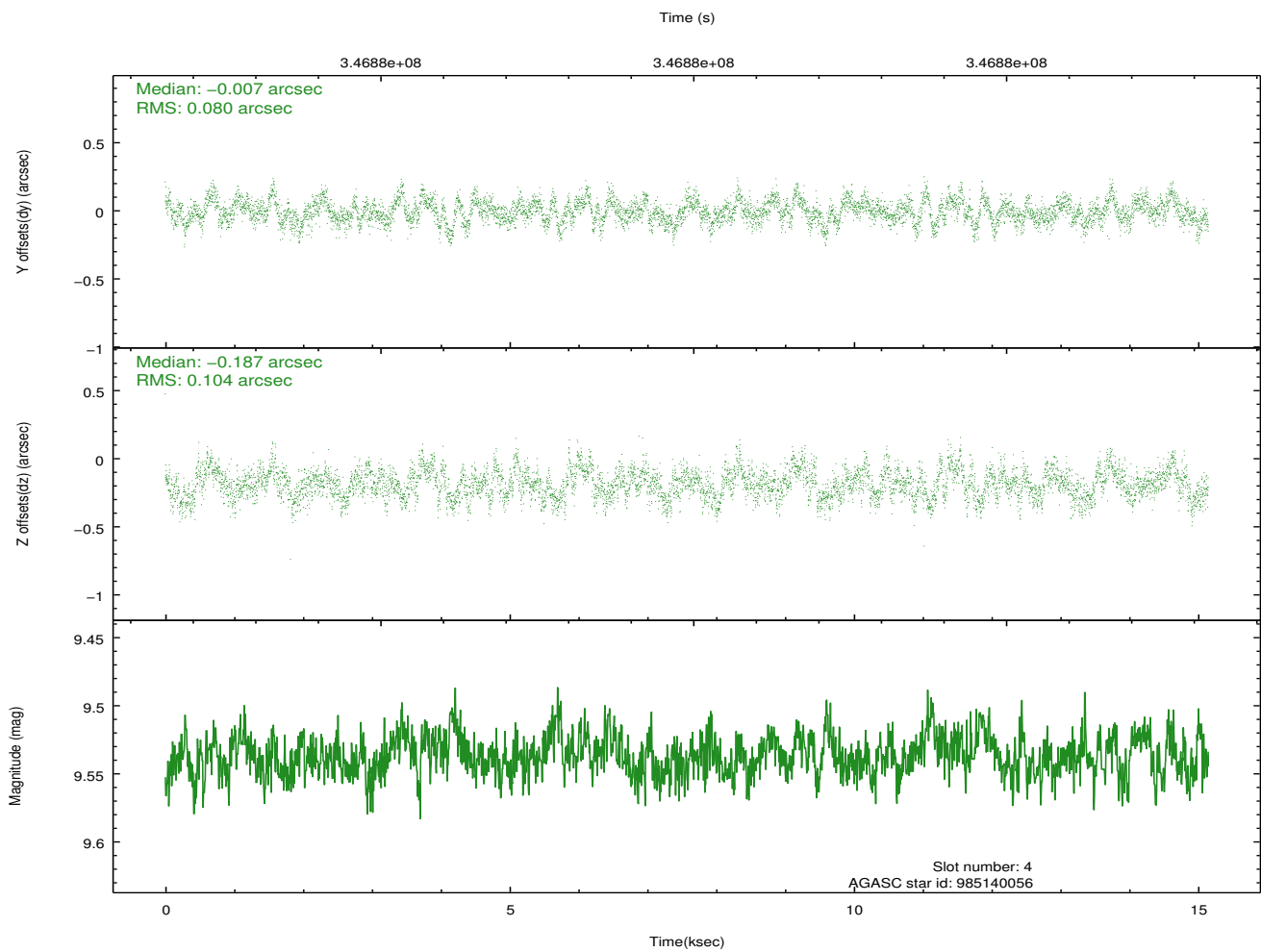
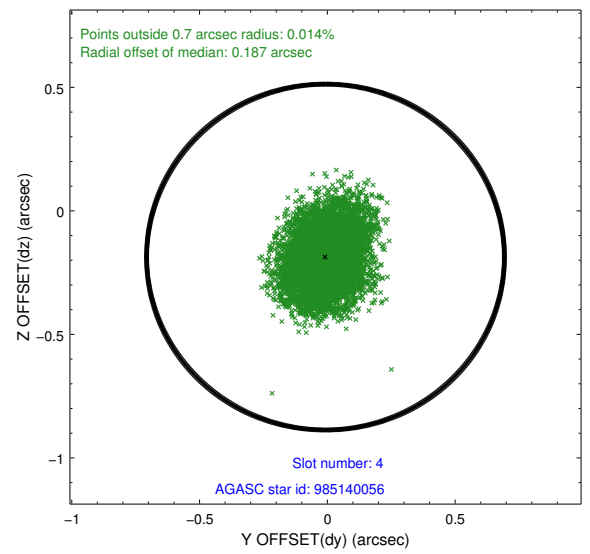
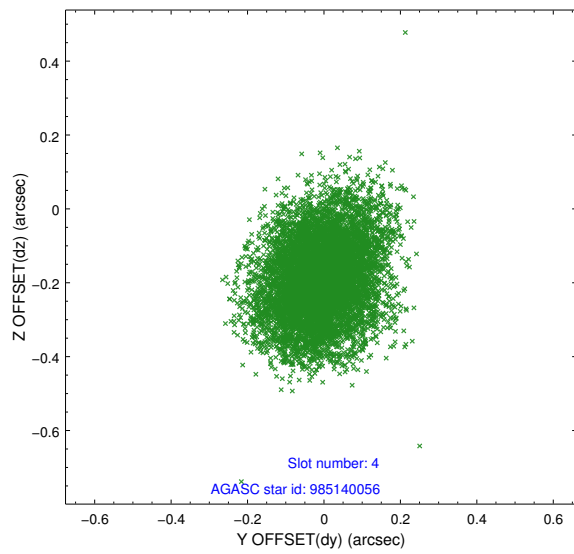
slot	status	id	mag	n_pts	med_dy	med_dz	dr1	dr2	ra	dec	mean_y	mean_z
0	FID	HRC-S-1	7.07	3695	0.080	-0.185	0.009	0.015	0.000000	0.000000	-1168.79	-465.19
1	FID	HRC-S-2	7.04	3696	0.200	-0.109	0.005	0.009	0.000000	0.000000	1230.70	-457.90
2	FID	HRC-S-3	7.05	3696	0.110	-0.008	0.009	0.016	0.000000	0.000000	-1171.13	564.40
3	GUIDE	916067616	9.34	7350	0.292	0.131	0.151	0.254	0.517191	-30.685226	1083.81	2102.67
4	GUIDE	985140056	9.54	7379	-0.007	-0.187	0.140	0.227	359.169544	-30.957024	502.41	-2137.35
5	GUIDE	985144184	10.05	7375	-0.071	-0.205	0.189	0.332	359.125461	-30.330052	-1657.64	-1468.88
6	GUIDE	985144448	10.20	7372	0.118	0.032	0.200	0.328	359.393147	-30.386787	-1172.68	-763.29
7	GUIDE	841221944	9.36	7380	-0.326	0.231	0.123	0.201	0.222626	-29.841894	-2078.49	2351.66

2.4 Star Slots

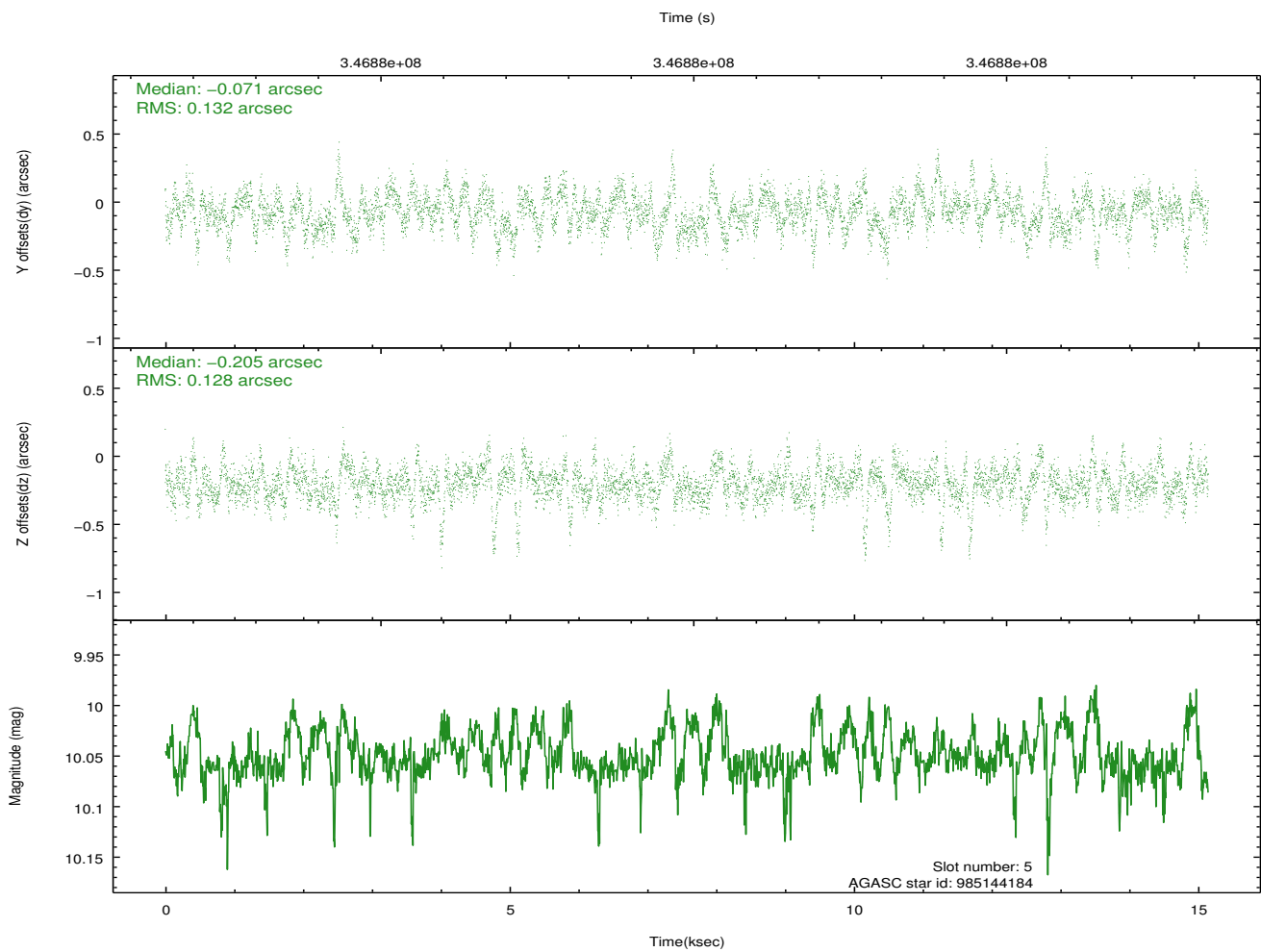
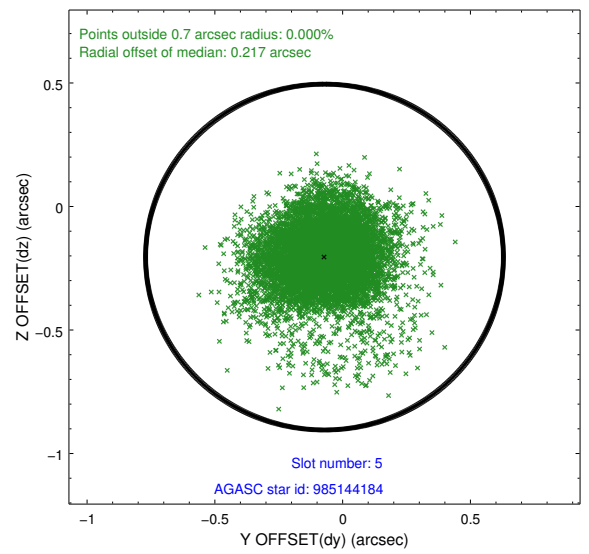
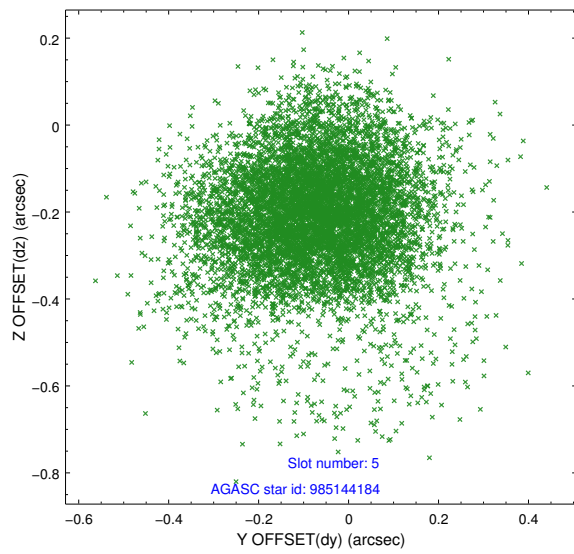
2.4.1 Slot 3



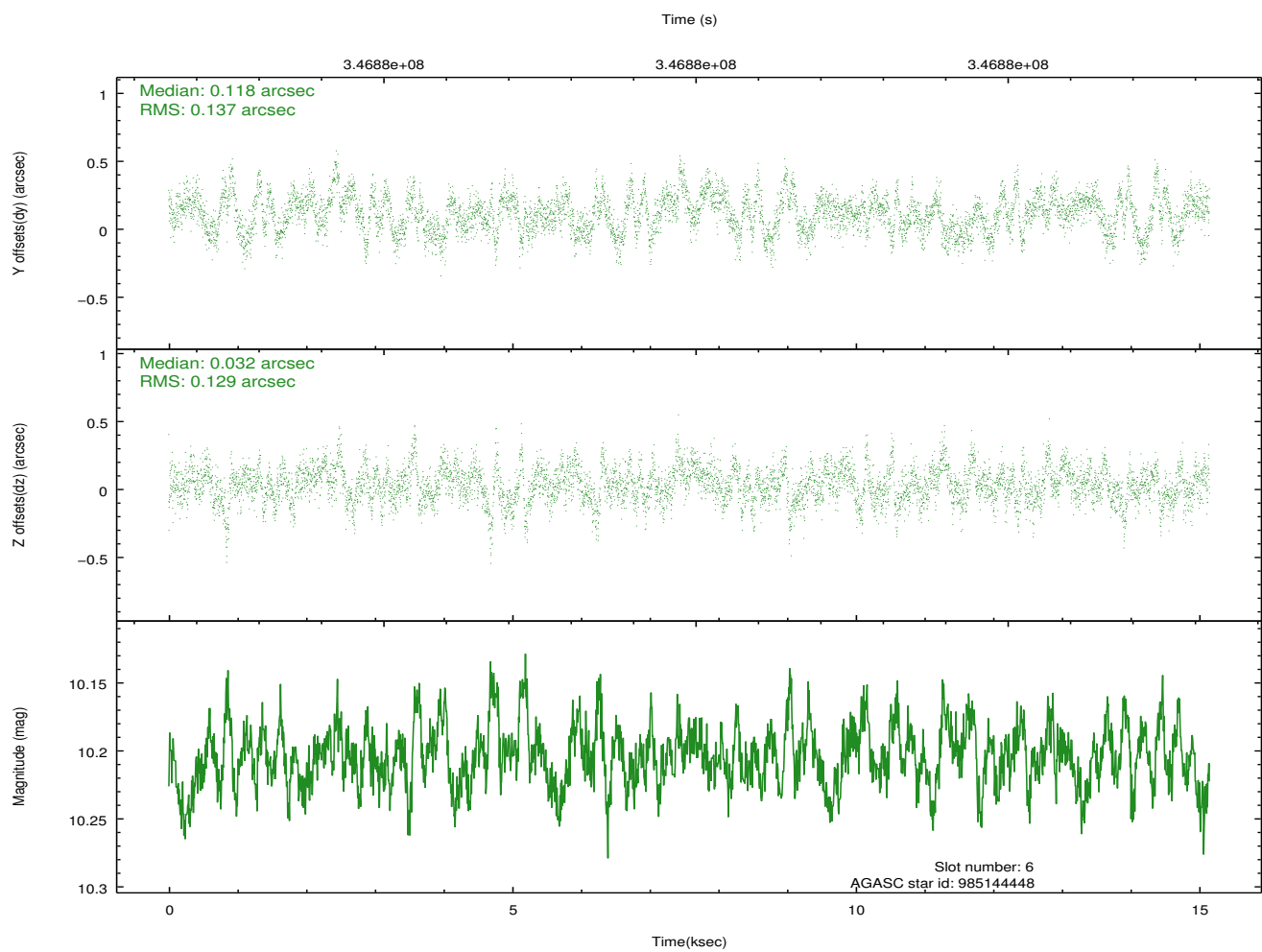
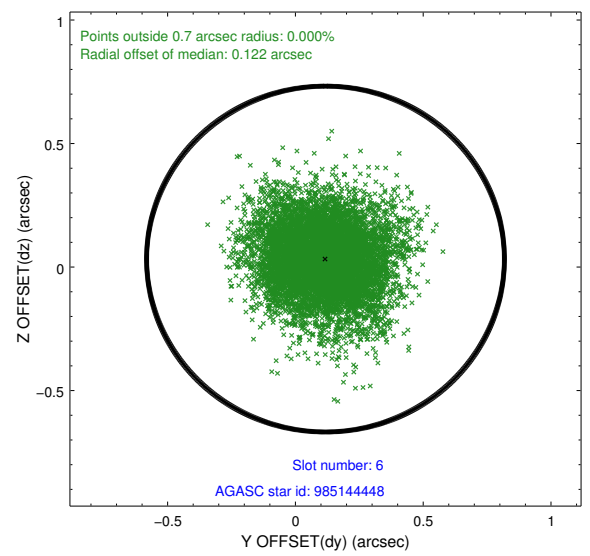
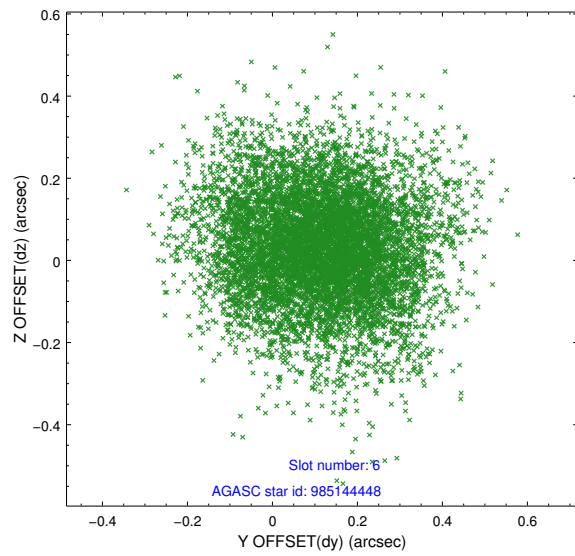
2.4.2 Slot 4



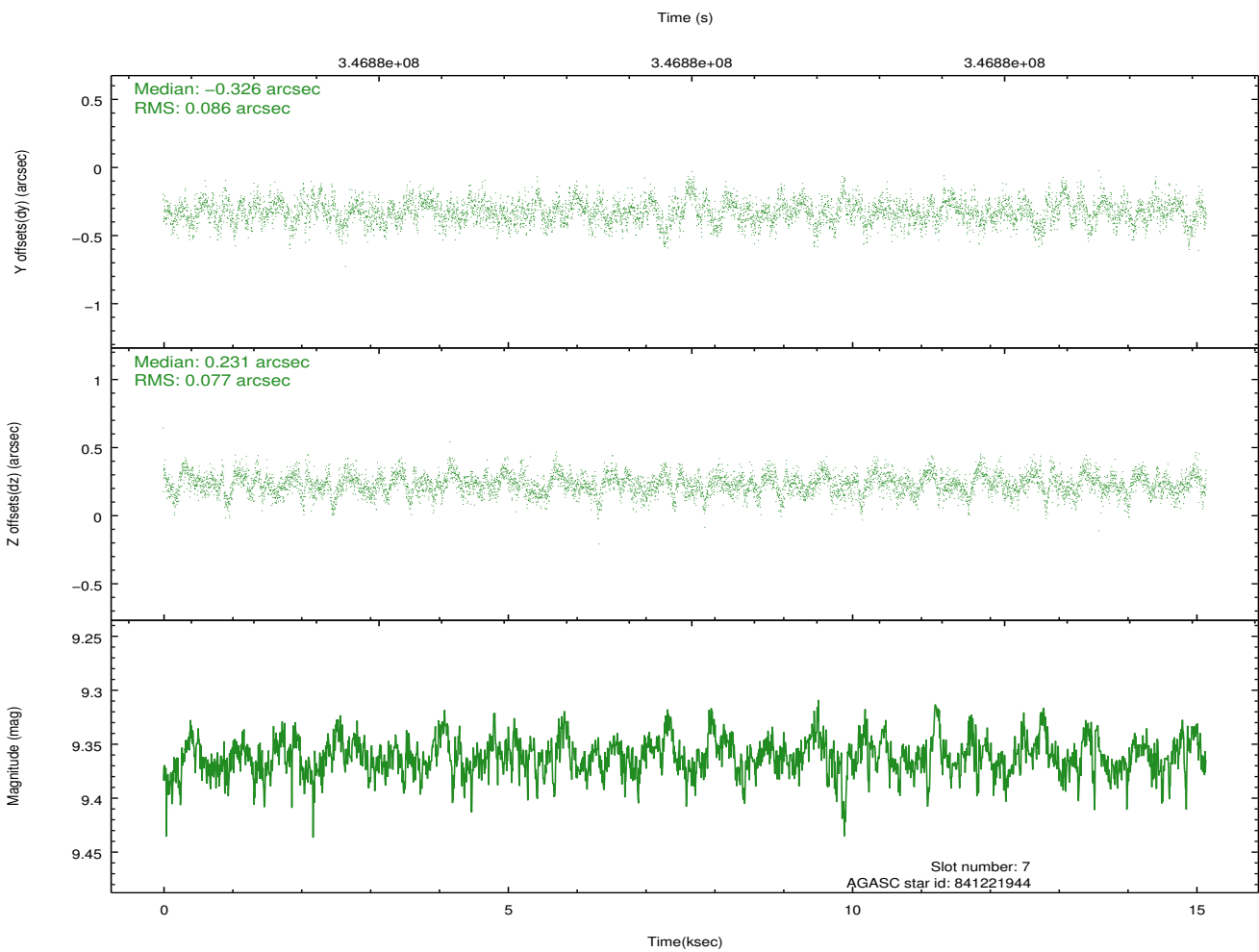
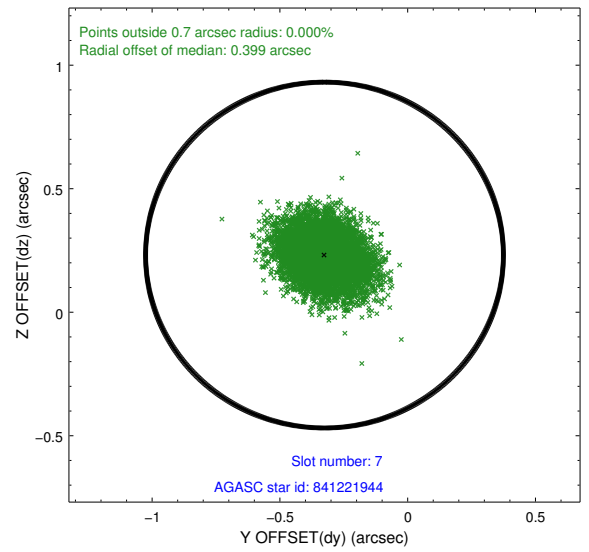
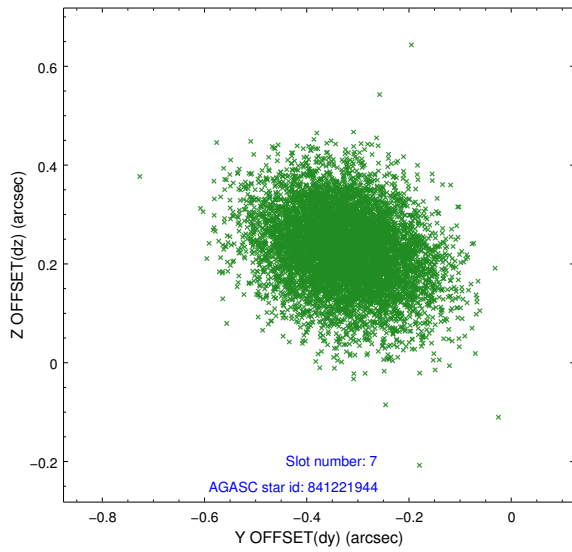
2.4.3 Slot 5



2.4.4 Slot 6

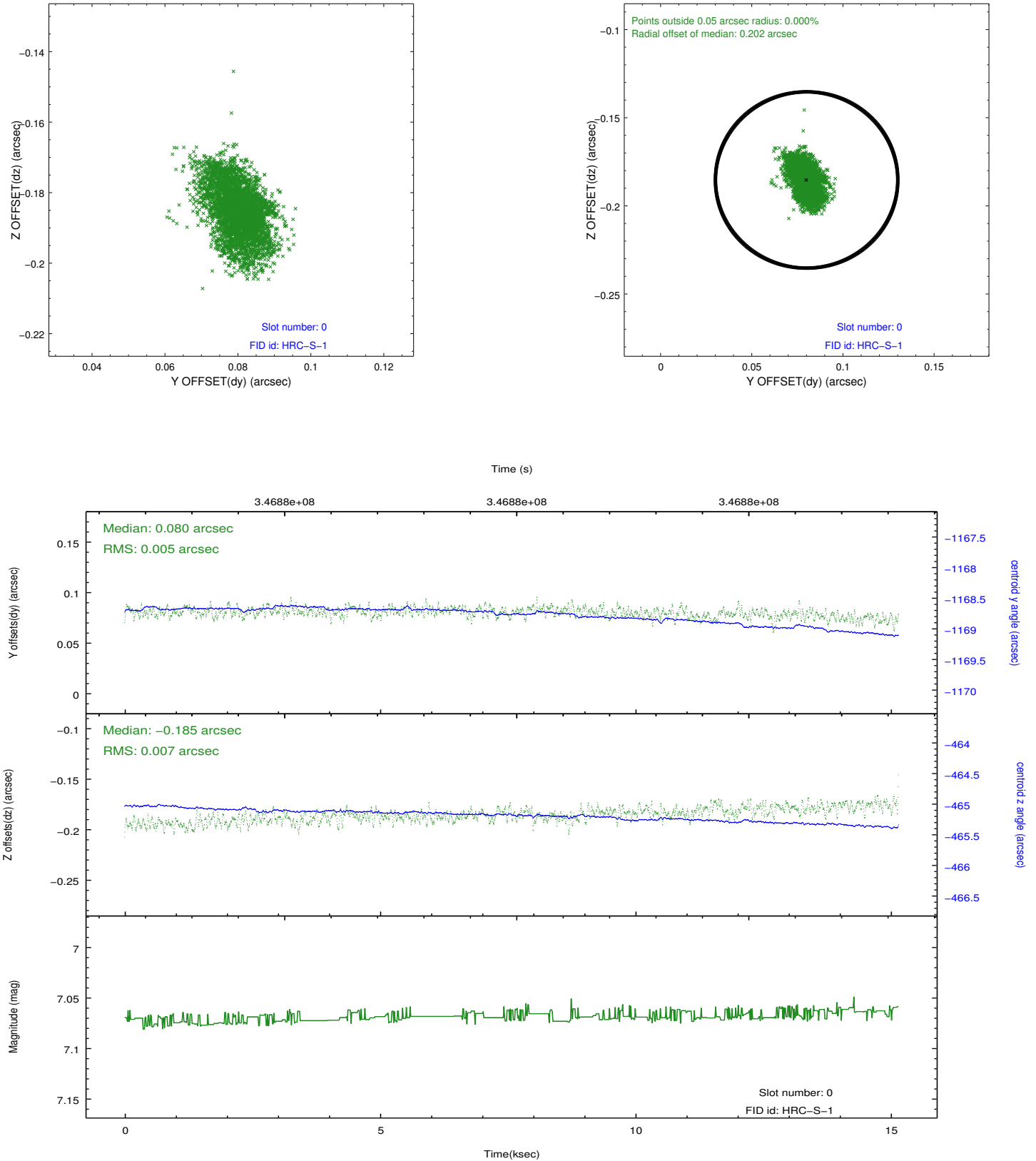


2.4.5 Slot 7

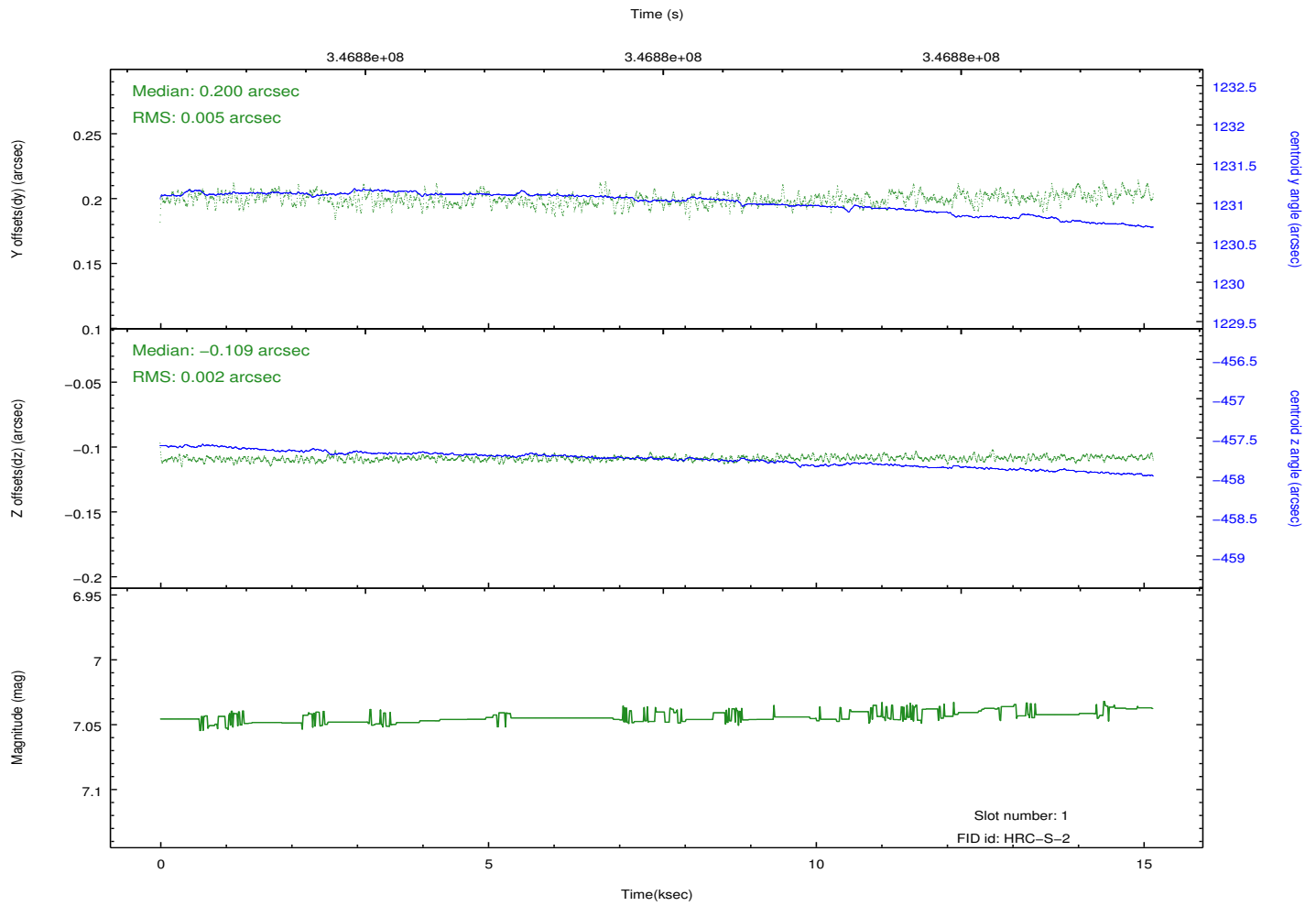
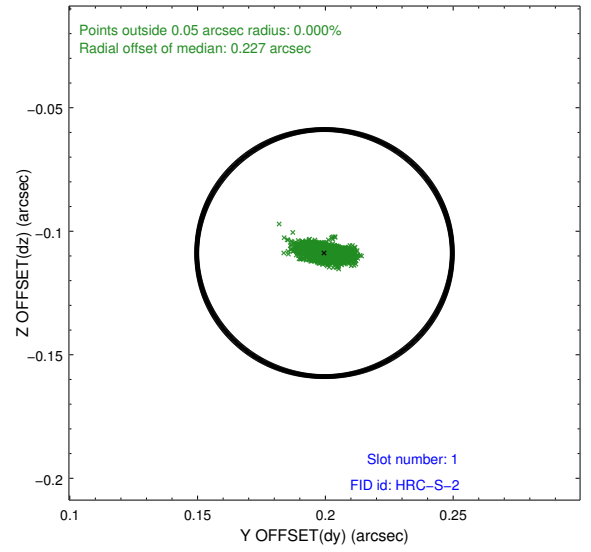
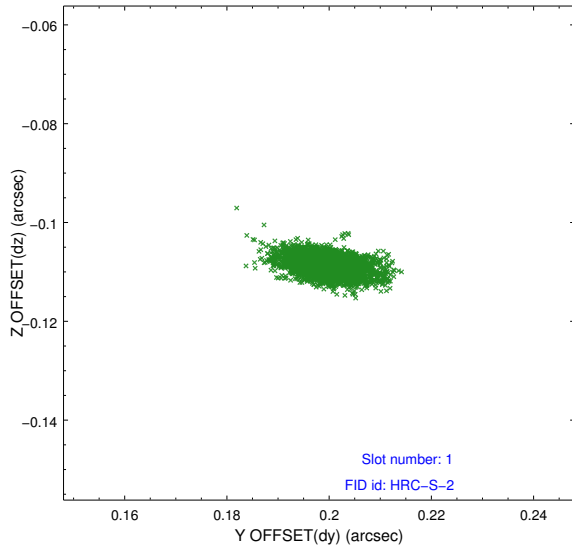


2.5 FID Slots

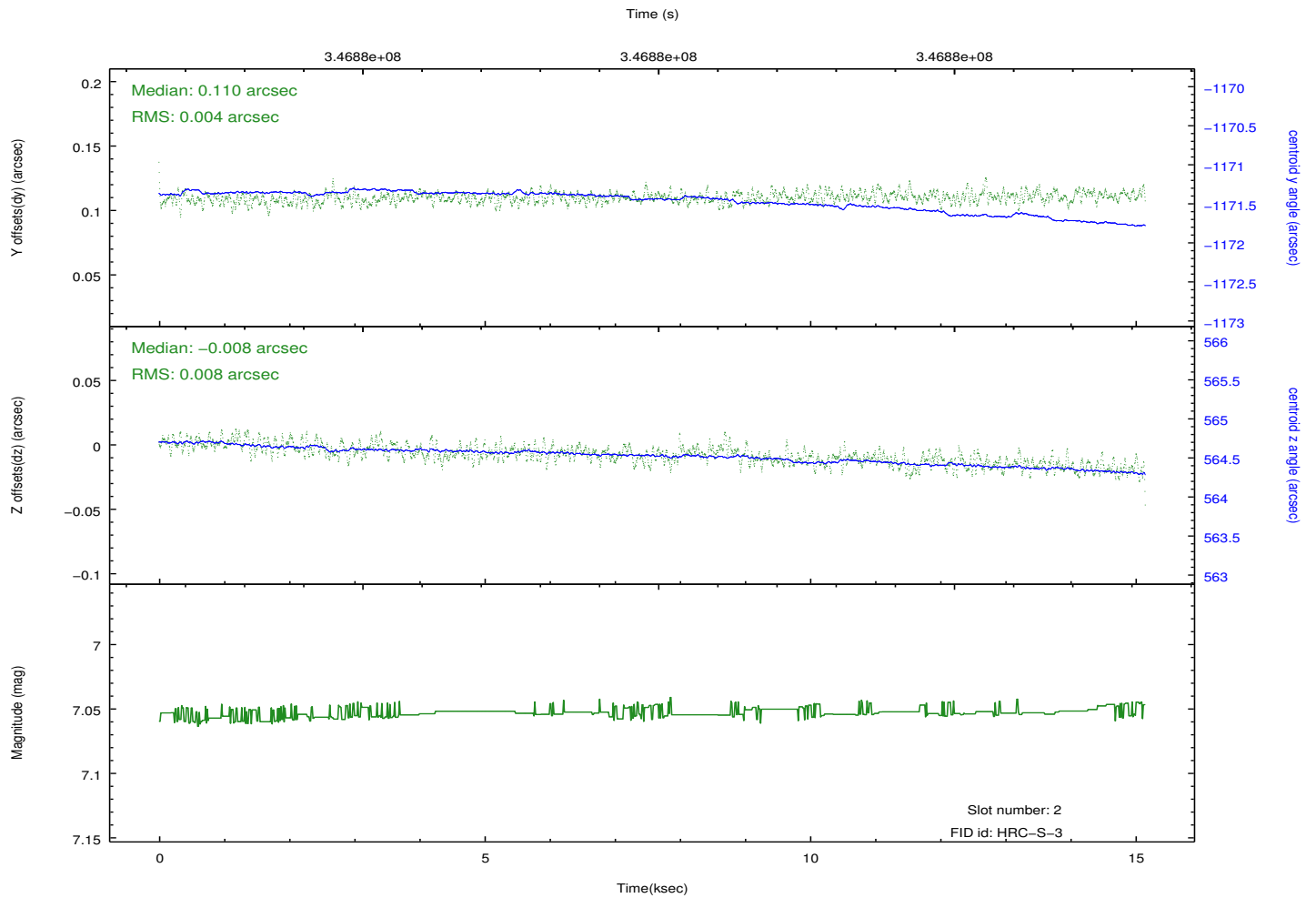
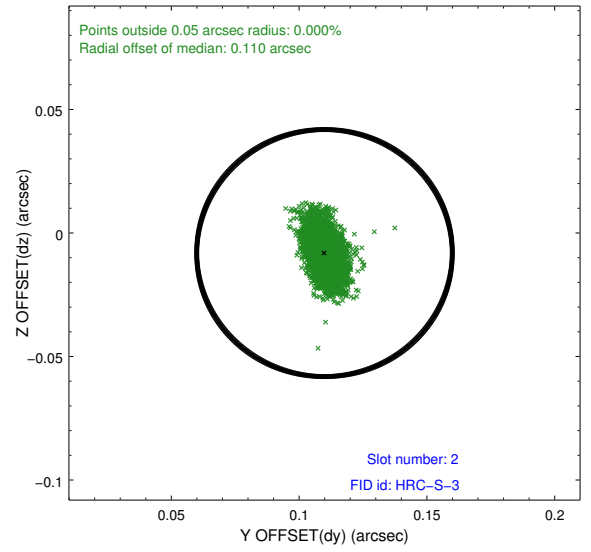
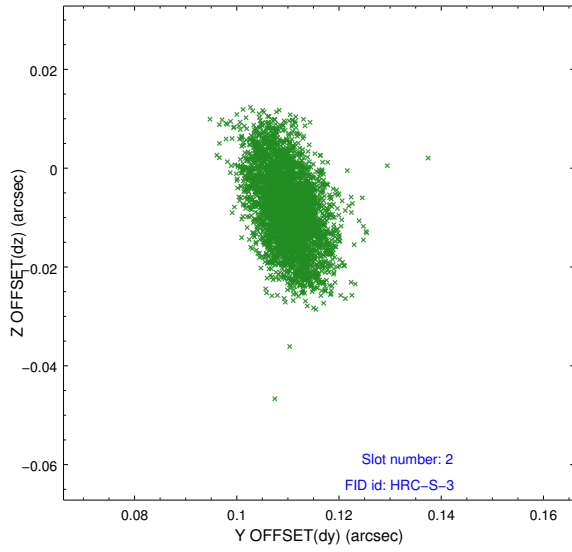
2.5.1 Slot 0



2.5.2 Slot 1

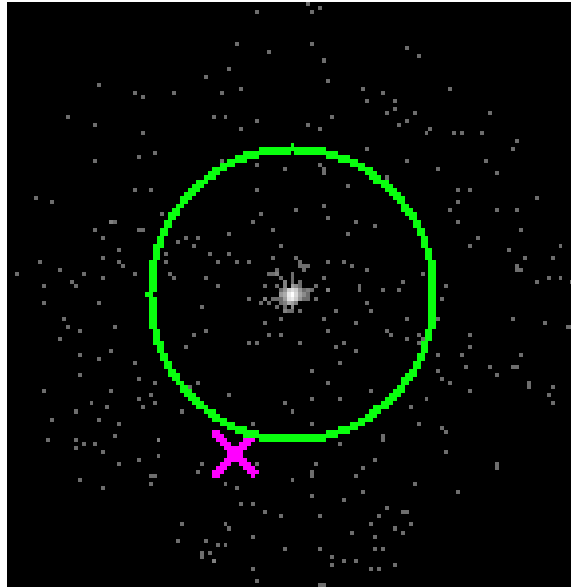


2.5.3 Slot 2

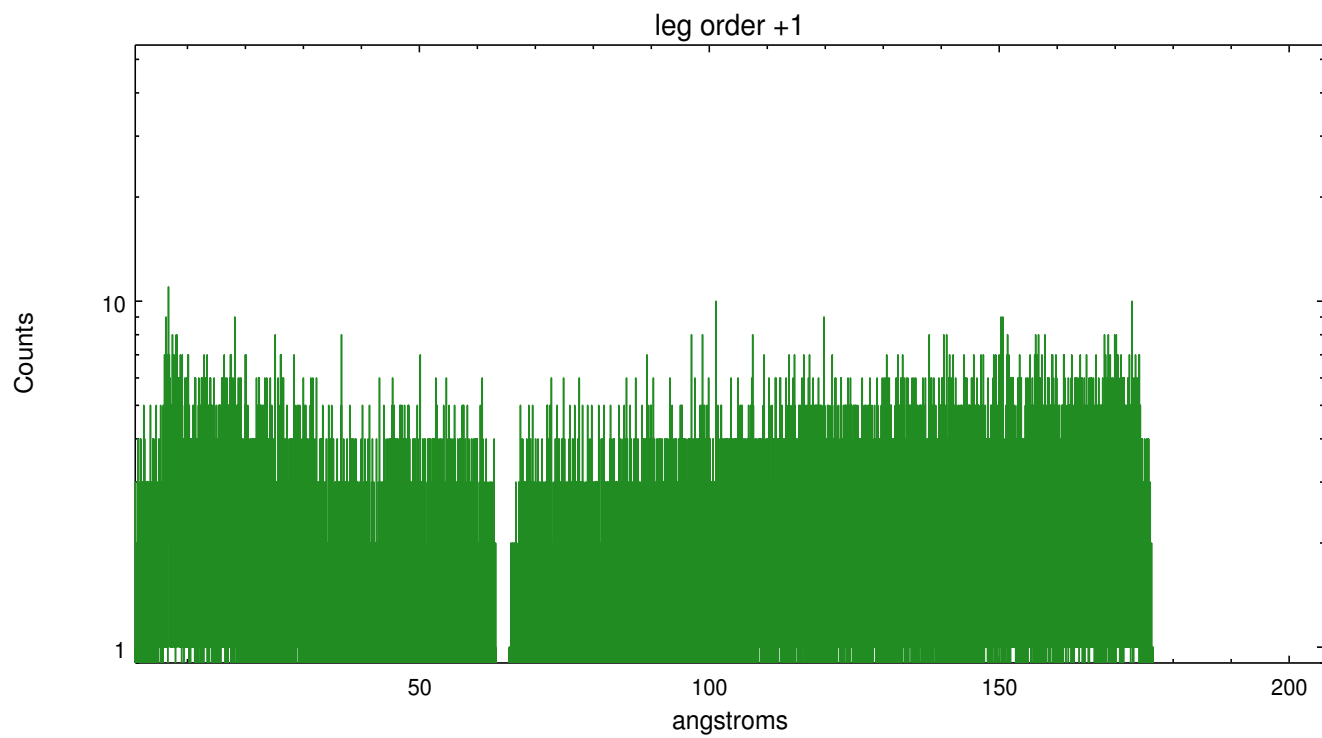
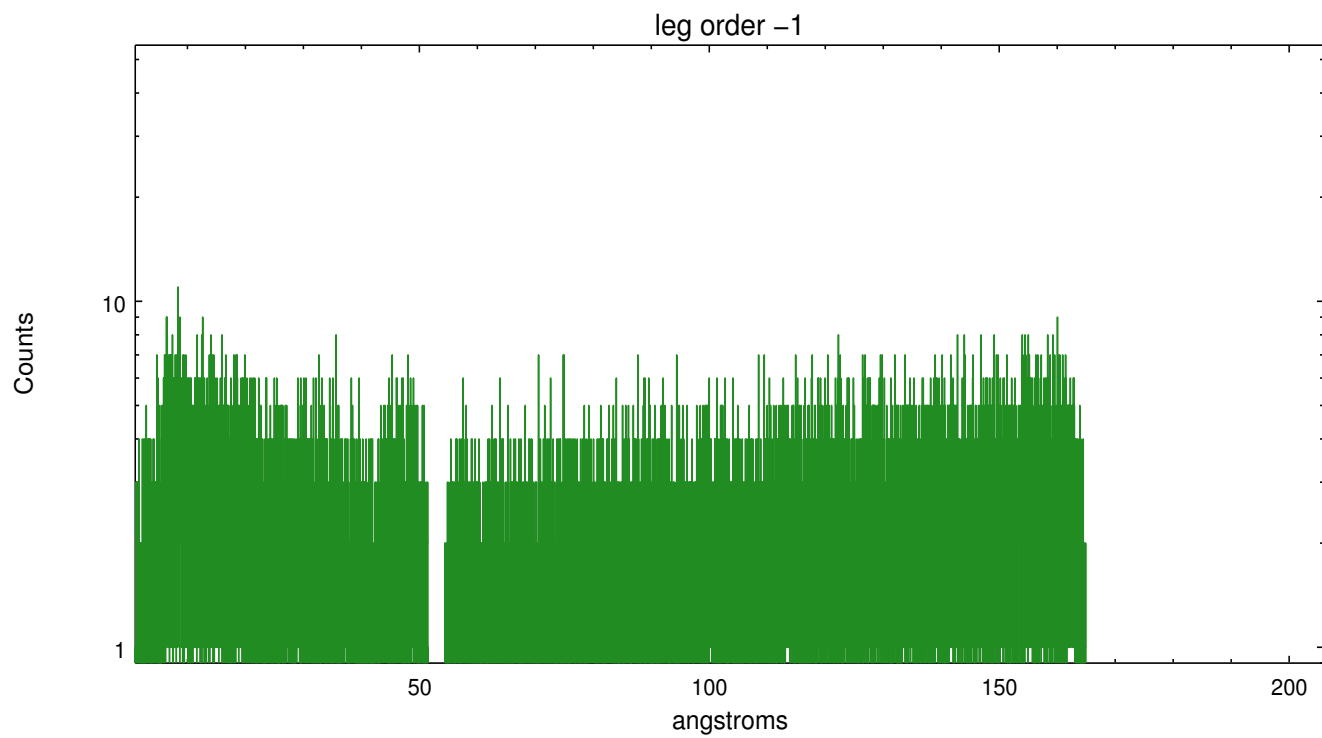


3 Gratings

3.1 LETG Arm



LETG Zero Order



A Summary

A.1 Status

V&V Scientist	Joy Nichols
V&V Date (YYYY-MM-DD)	2012.08.22
V&V Edition	1
V&V Disposition and Status	OK
V&V Charge Time	15.1487319

A.2 Comments