

V&V Reference Report

L2 ASCDS Version : 8.4.4

Observation 10861 - L2 Version 3
Chandra X-Ray Center

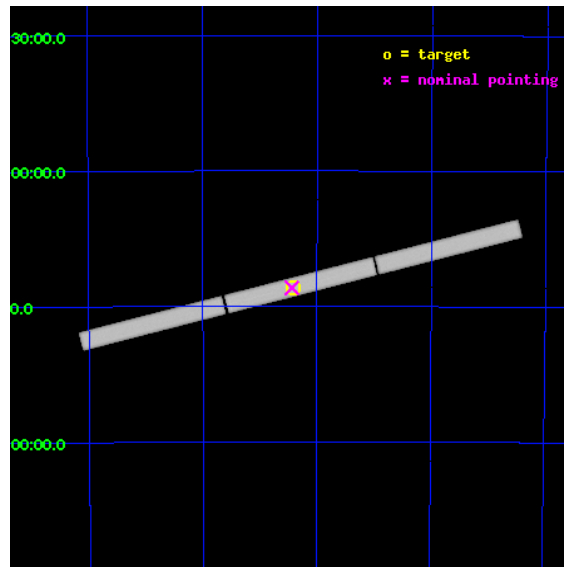
L2 Processing Date : Aug 13 2012

Contents

1	Front	2
2	OBI	3
2.1	OBI	3
2.1.1	Images	3
2.1.2	Parameters	4
2.1.3	Events	4
2.2	Compared Parameters	5
2.3	Aspect	6
2.4	Star Slots	9
2.4.1	Slot 3	9
2.4.2	Slot 4	10
2.4.3	Slot 5	11
2.4.4	Slot 6	12
2.4.5	Slot 7	13
2.5	FID Slots	14
2.5.1	Slot 0	14
2.5.2	Slot 1	15
2.5.3	Slot 2	16
3	Gratings	17
3.1	LETG Arm	17
A	Summary	19
A.1	Status	19
A.2	Comments	19

1 Front

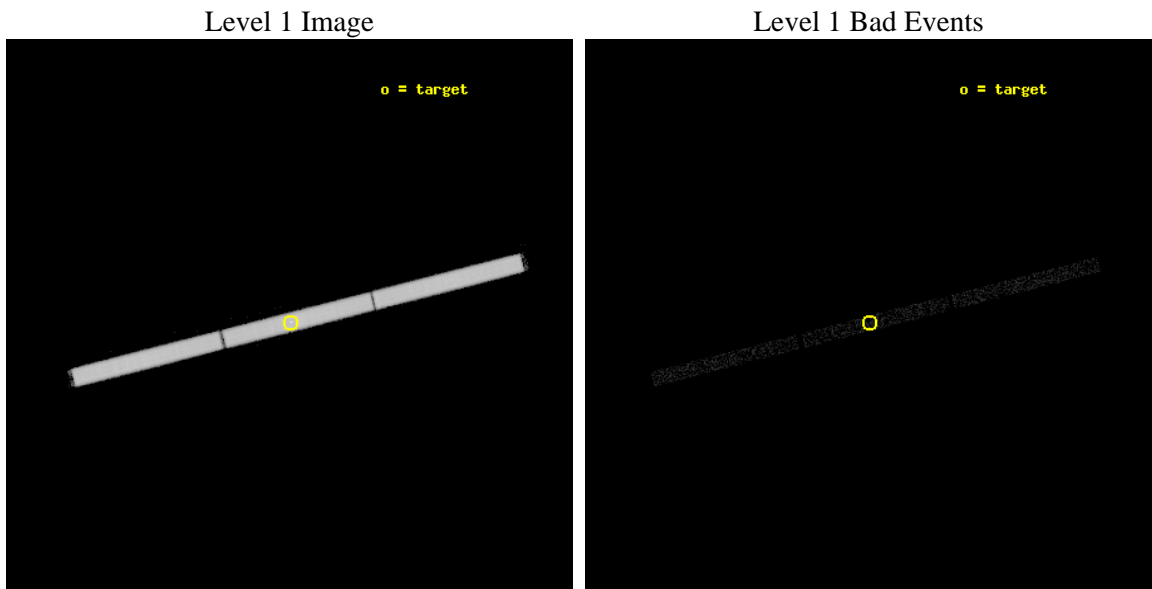
seq_num	501156	Sequence number
obs_id	10861	Observation id
title	Monitoring the spectral evolution of RXJ0720-3125 and determining its nature	Proposal title
observer	Dr Jelle Kaastra	Principal investigator
object	RX J0720-3125	Source name
ra_targ	110.104167	Observer's specified target RA [deg]
dec_targ	-31.430611	Observer's specified target Dec [deg]
ra_nom	110.10963373829	Nominal RA [deg]
dec_nom	-31.431910413956	Nominal Dec [deg]
roll_nom	345.65896442958	Nominal Roll [deg]
revision	3	Processing version of data
ontime	11185.825553536	[s]
livetime	11070.170720283	Ontime multiplied by DTCOR
l2events	976255	Number of level 2 events



2 OBI

2.1 OBI

2.1.1 Images



2.1.2 Parameters

obi_num	0	Obi number	sched_exp_time	11000.000000	[s] Scheduled observation exposure time
ascdsver	8.4.5	Processing system revision	ontime	11185.825553536	[s]
caldbver	4.5.1.1	 	l1events	1352510	Number of level 1 events
date	2012-08-13T03:22:03	Date and time of file creation			
revision	3	Processing version of data			

2.1.3 Events

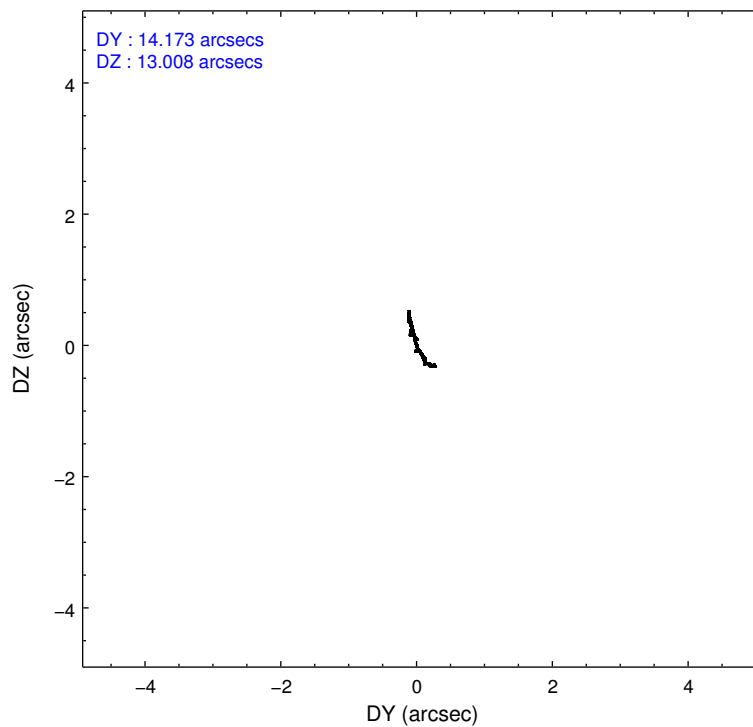
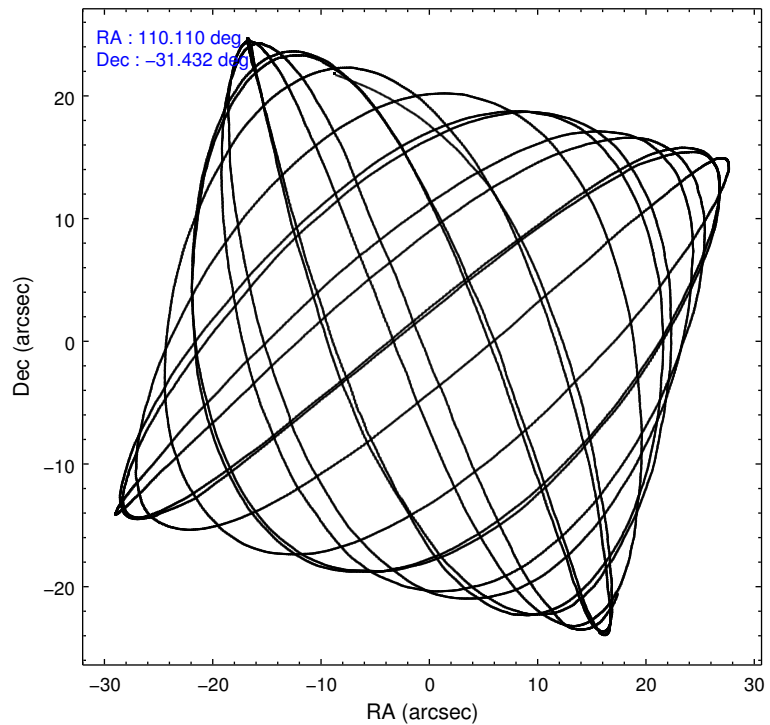
Level 1 Events

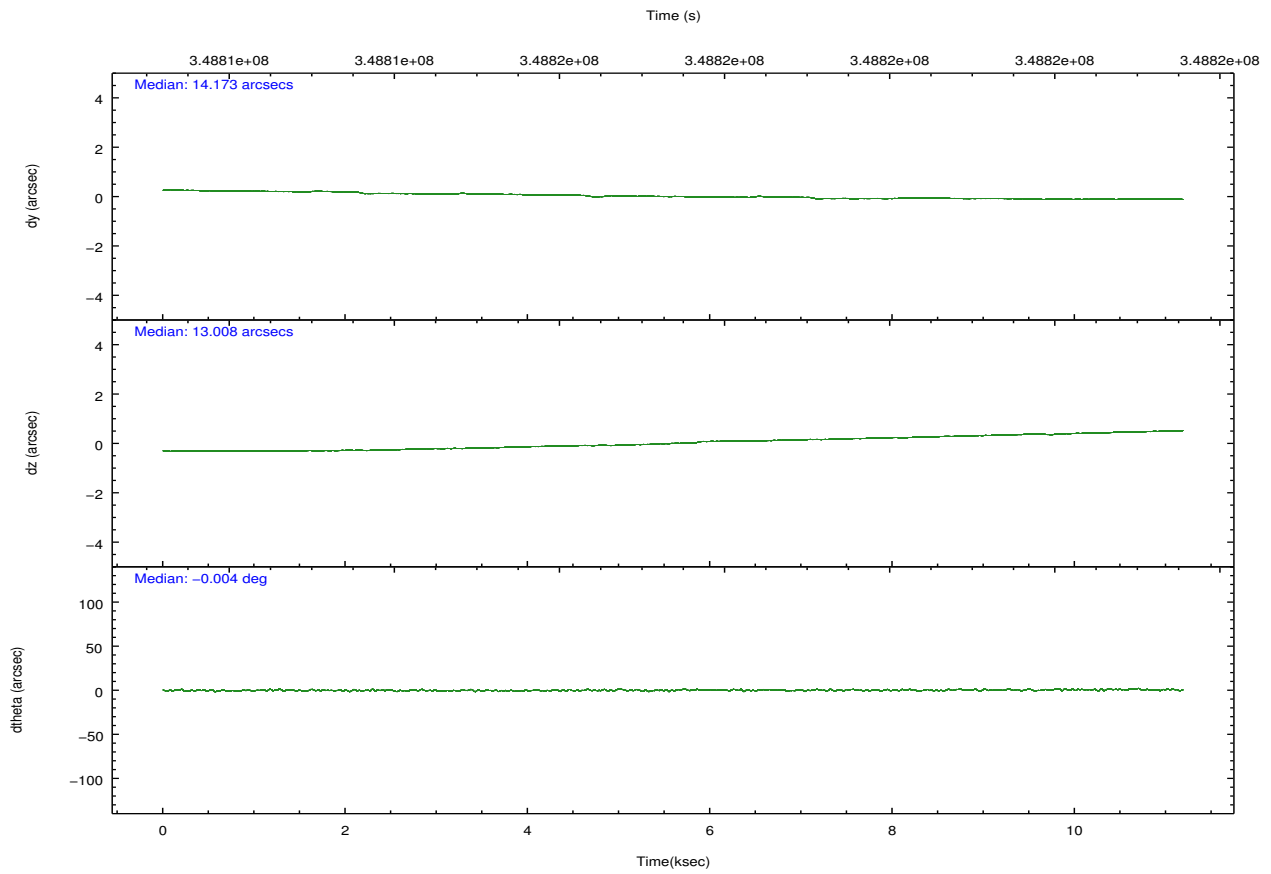
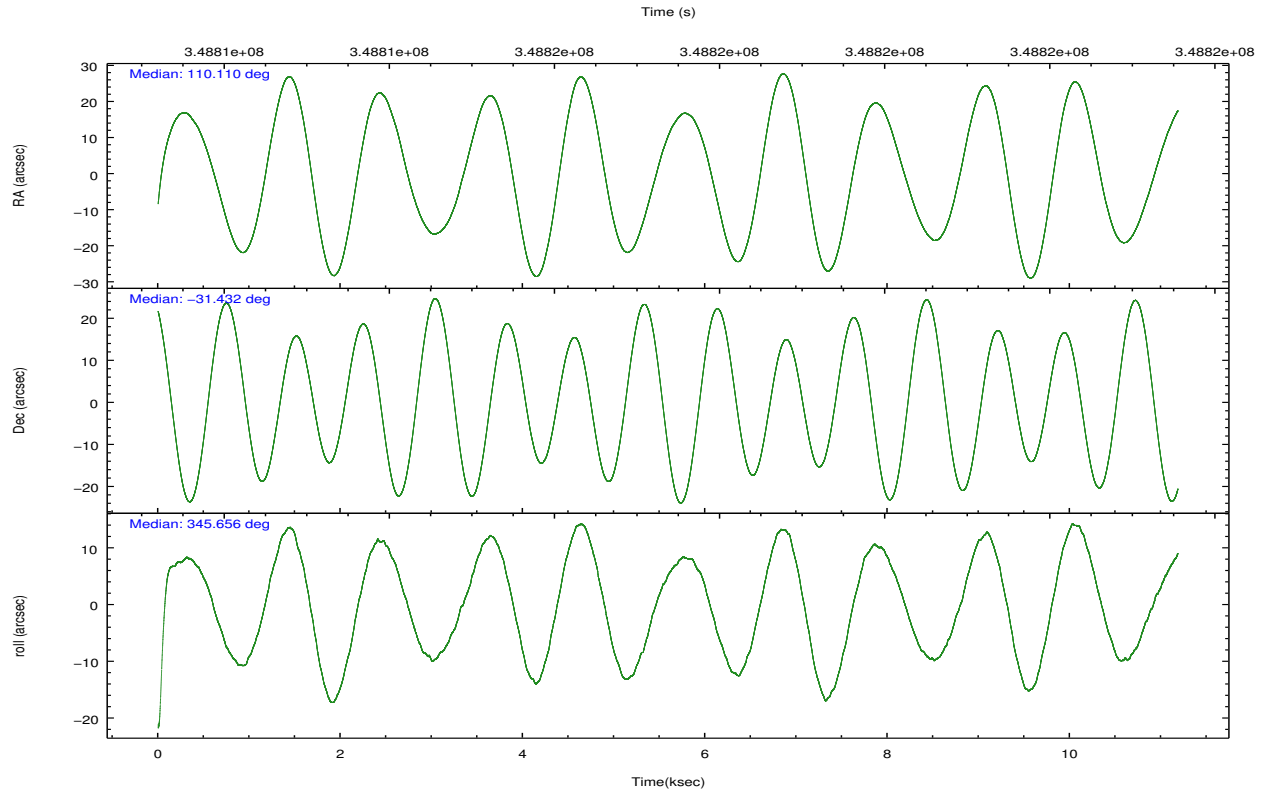
	segment 1	segment 2	segment 3
level 1 events	450564	449534	452412
rejected events	27350	27321	27835
rejected %	6%	6%	6%

2.2 Compared Parameters

Parameter	Planned	Actual	Parameter	Planned	Actual
Instrument	HRC	HRC	Obspar format version number	7	7
Detector	HRC-S	HRC-S	Obspar file type	PREDICTED	ACTUAL
Grating	LETG	LETG	Obspar update status	NONE	UPDATED
Data mode	OBSERVING	OBSERVING			
Observation mode	POINTING	POINTING			
[deg] Pointing RA	110.077653	110.1096337382865			
[deg] Pointing Dec	-31.440980	-31.43191041395602			
[deg] Pointing Roll	345.574968	345.6589644295768			
[mm] SIM focus pos	-1.429586	-1.428180813131781			
[mm] SIM defocus	0.1037507710433287	0.1051558262725154			
[mm] SIM translation stage pos	250.455976	250.466033080201			
[mm] SIM translation stage offset	0	-0.01005468664627074			
[s] Observation start time (MET)	348811968.184000	348810987.07958			
Observation start date	2009-01-20T04:11:42	2009-01-20T03:56:27			
[s] Observation end time (MET)	348822968.184000	348824262.88024			
Observation end date	2009-01-20T07:15:02	2009-01-20T07:37:42			

2.3 Aspect



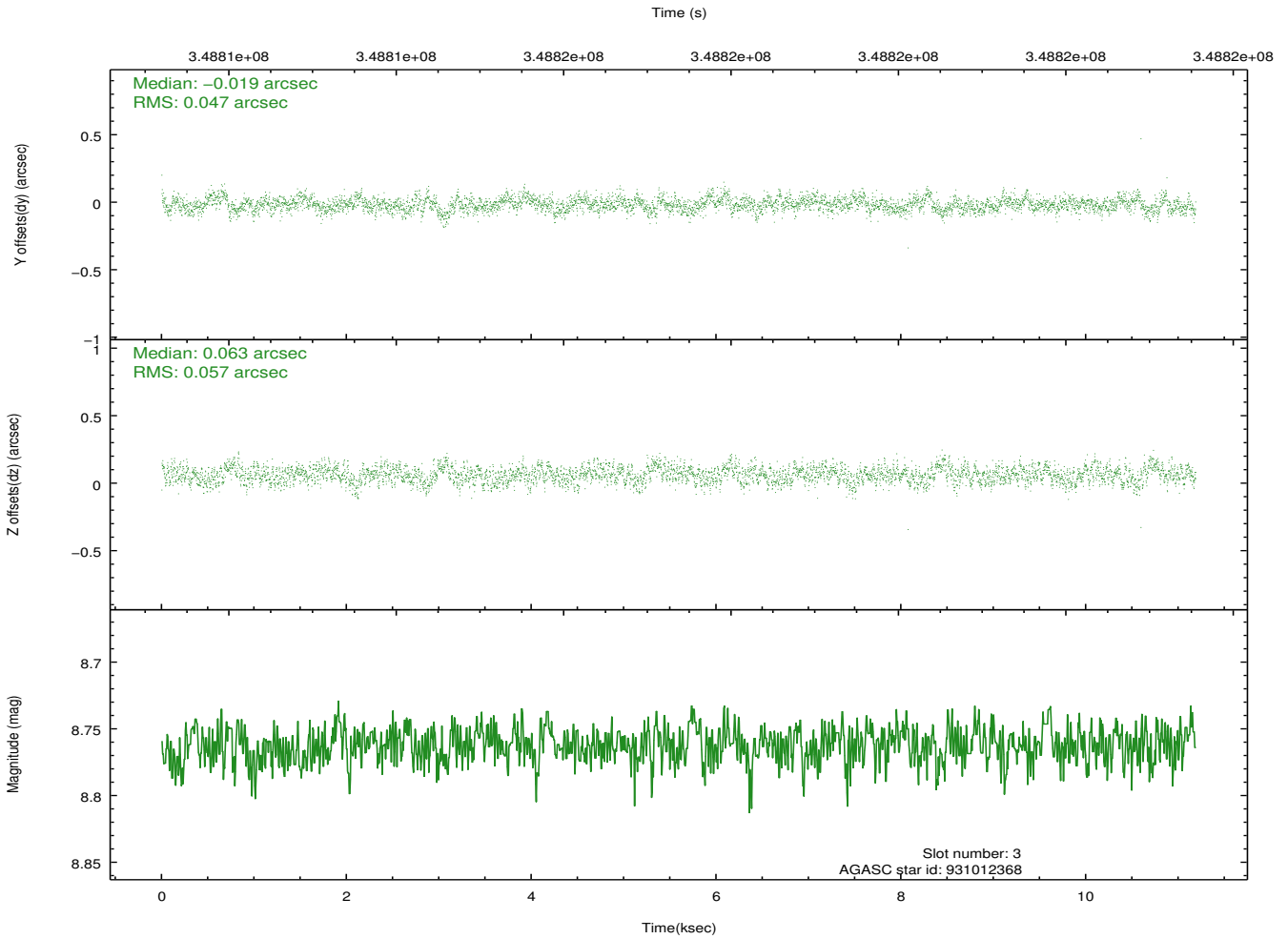
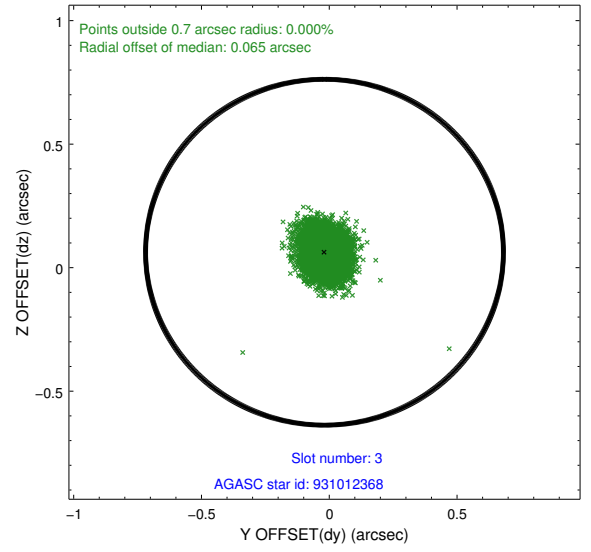
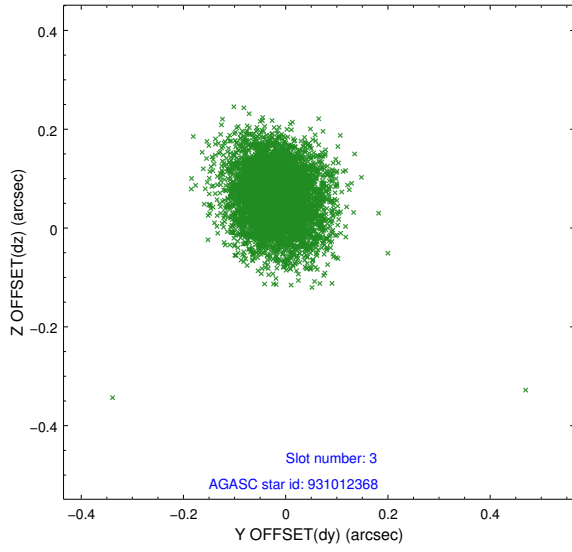


Slot Statistics

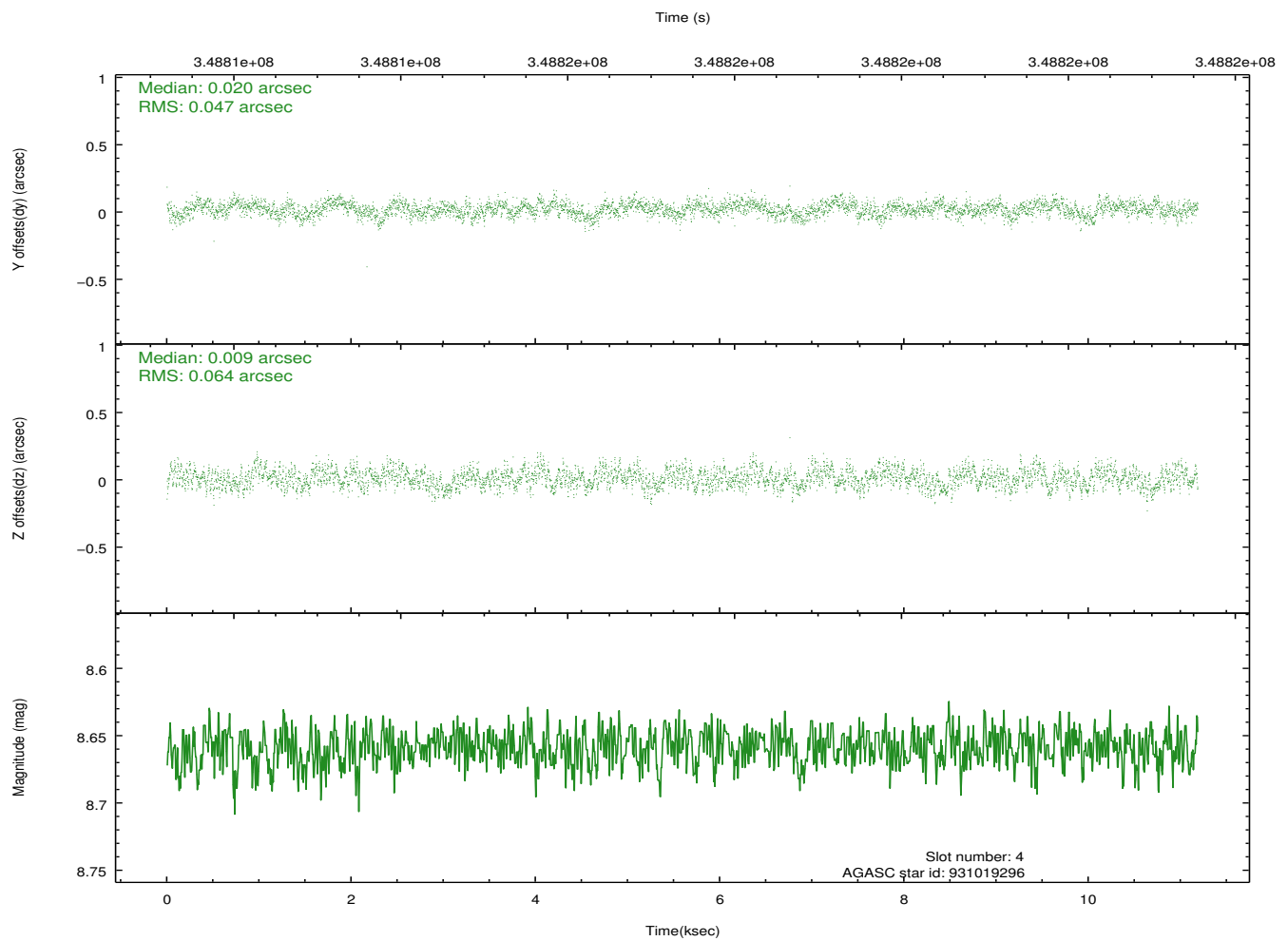
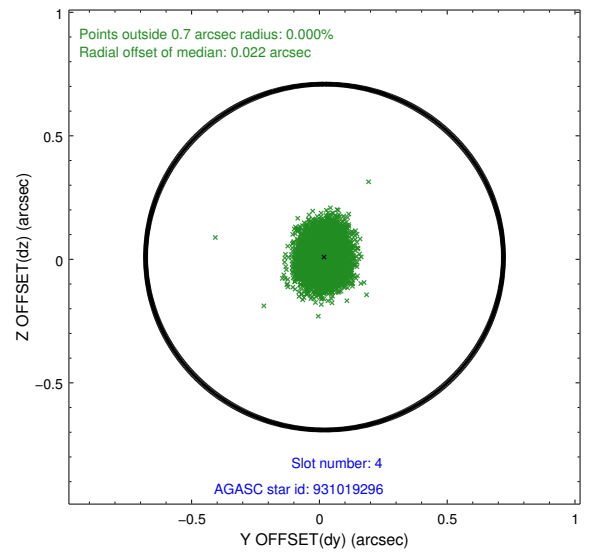
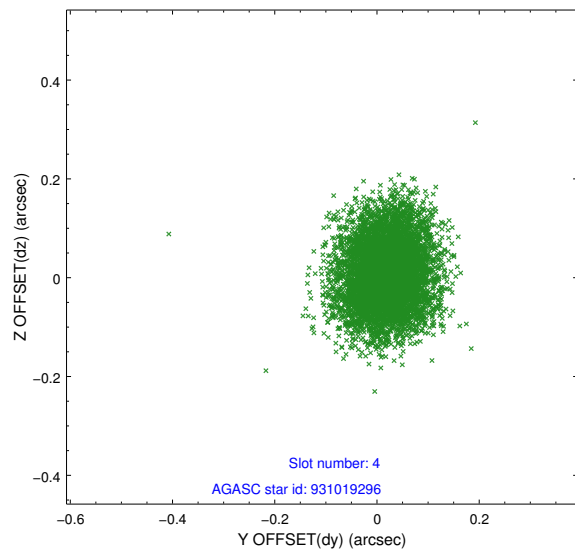
slot	status	id	mag	n_pts	med_dy	med_dz	dr1	dr2	ra	dec	mean_y	mean_z
0	FID	HRC-S-1	7.02	2729	0.083	-0.157	0.015	0.024	0.000000	0.000000	-1168.58	-461.84
1	FID	HRC-S-2	6.99	2729	0.191	-0.106	0.006	0.011	0.000000	0.000000	1230.78	-454.58
2	FID	HRC-S-3	7.01	2729	0.116	-0.038	0.014	0.024	0.000000	0.000000	-1170.83	567.64
3	GUIDE	931012368	8.76	5452	-0.019	0.063	0.078	0.128	109.359817	-31.783345	-1818.46	-1747.56
4	GUIDE	931019296	8.66	5453	0.020	0.009	0.085	0.138	109.471771	-31.694370	-1569.12	-1351.35
5	GUIDE	931025288	8.43	5455	-0.077	-0.037	0.072	0.120	109.511084	-30.937793	-2144.80	1314.23
6	GUIDE	931163512	8.45	5457	0.035	-0.031	0.071	0.116	110.894384	-31.299941	2308.66	1109.29
7	GUIDE	931695048	7.41	5457	0.036	-0.003	0.088	0.148	110.648539	-32.046020	2231.59	-1679.30

2.4 Star Slots

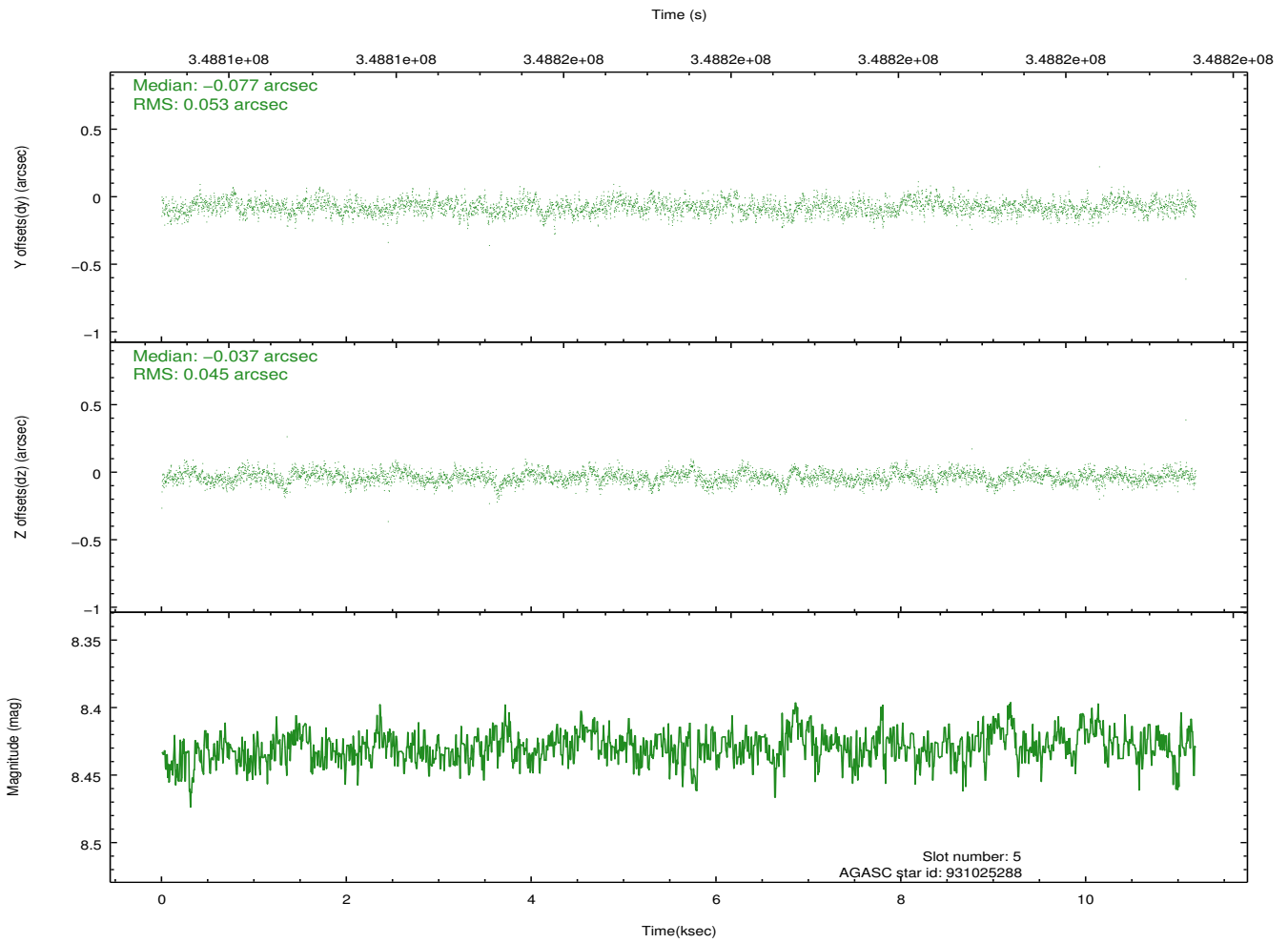
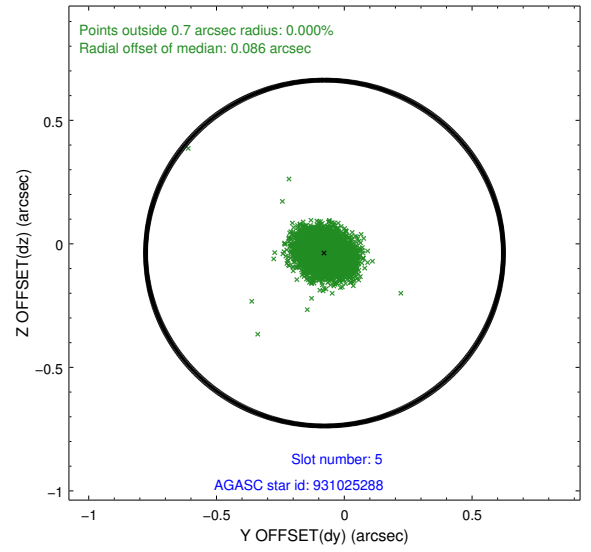
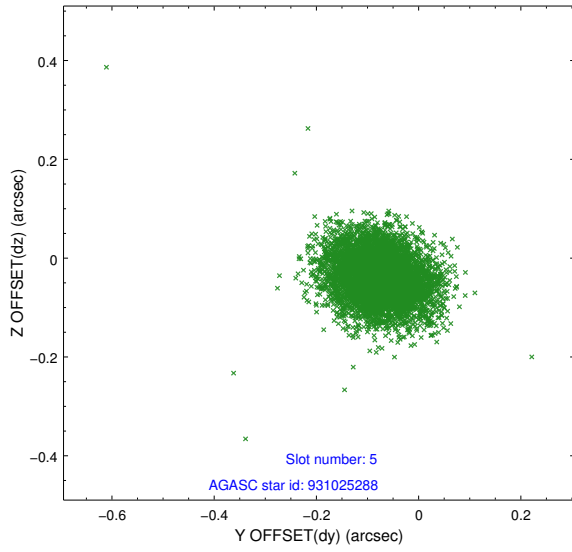
2.4.1 Slot 3



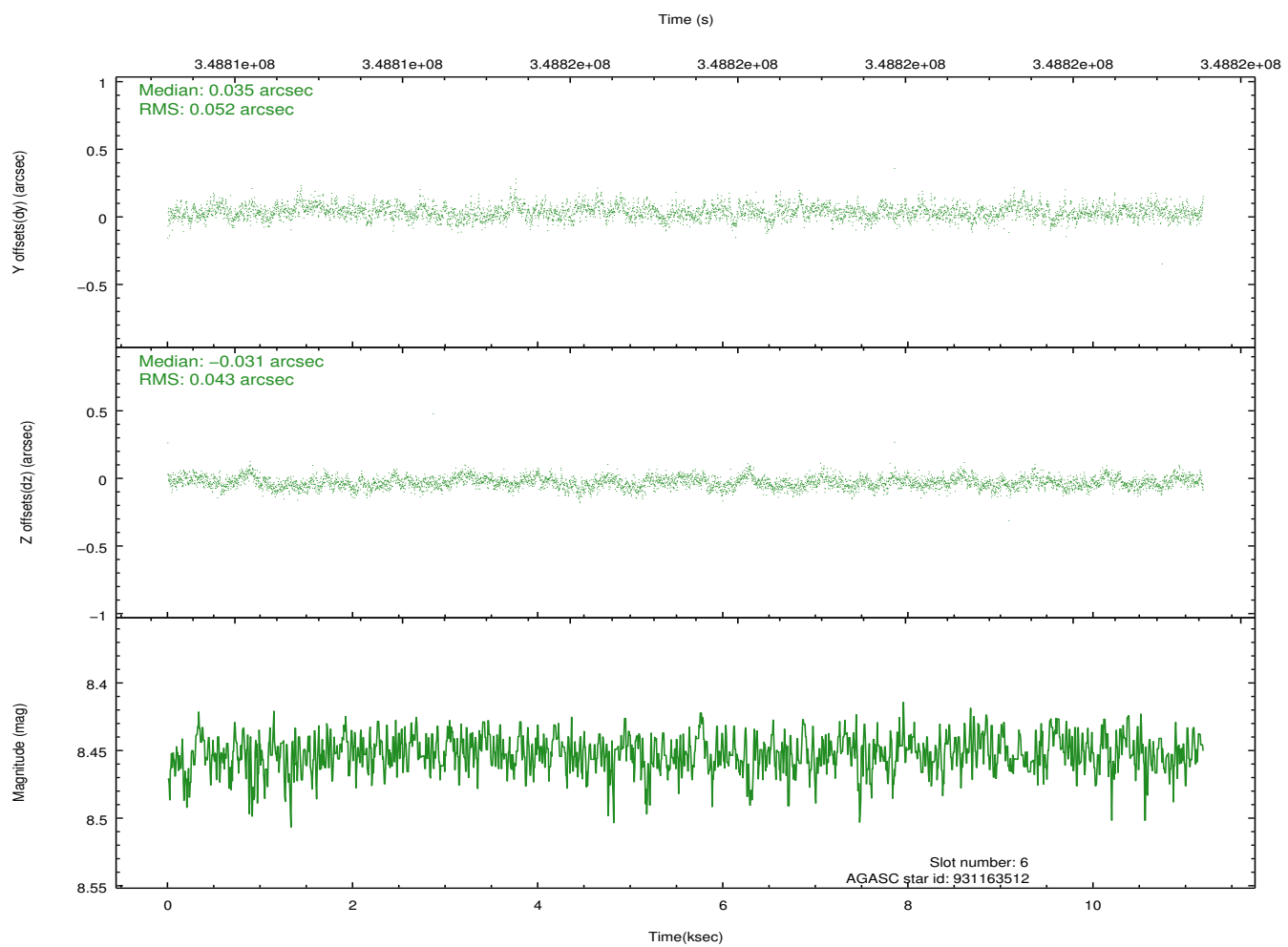
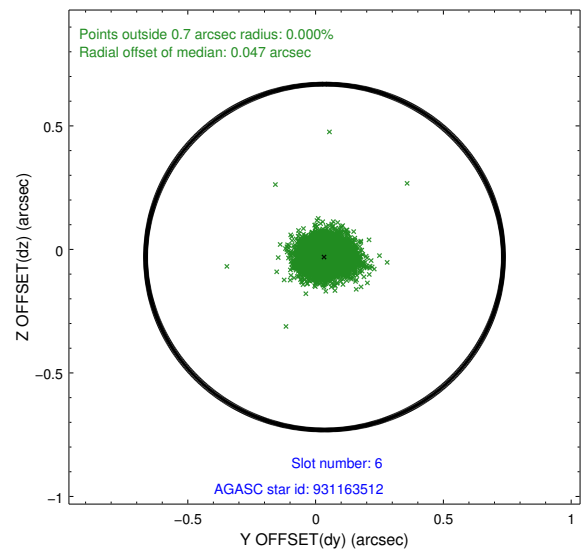
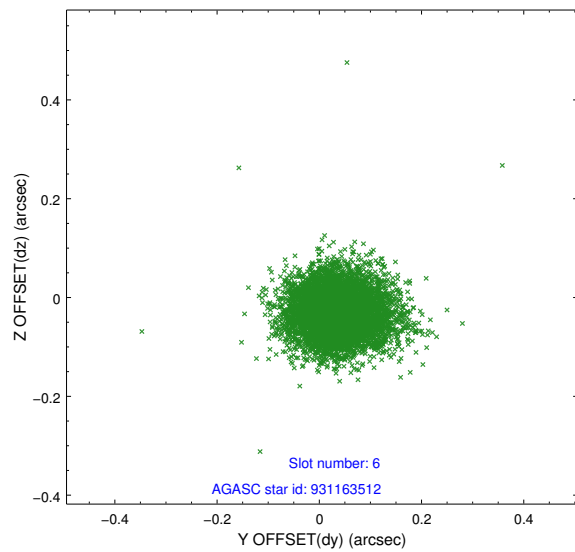
2.4.2 Slot 4



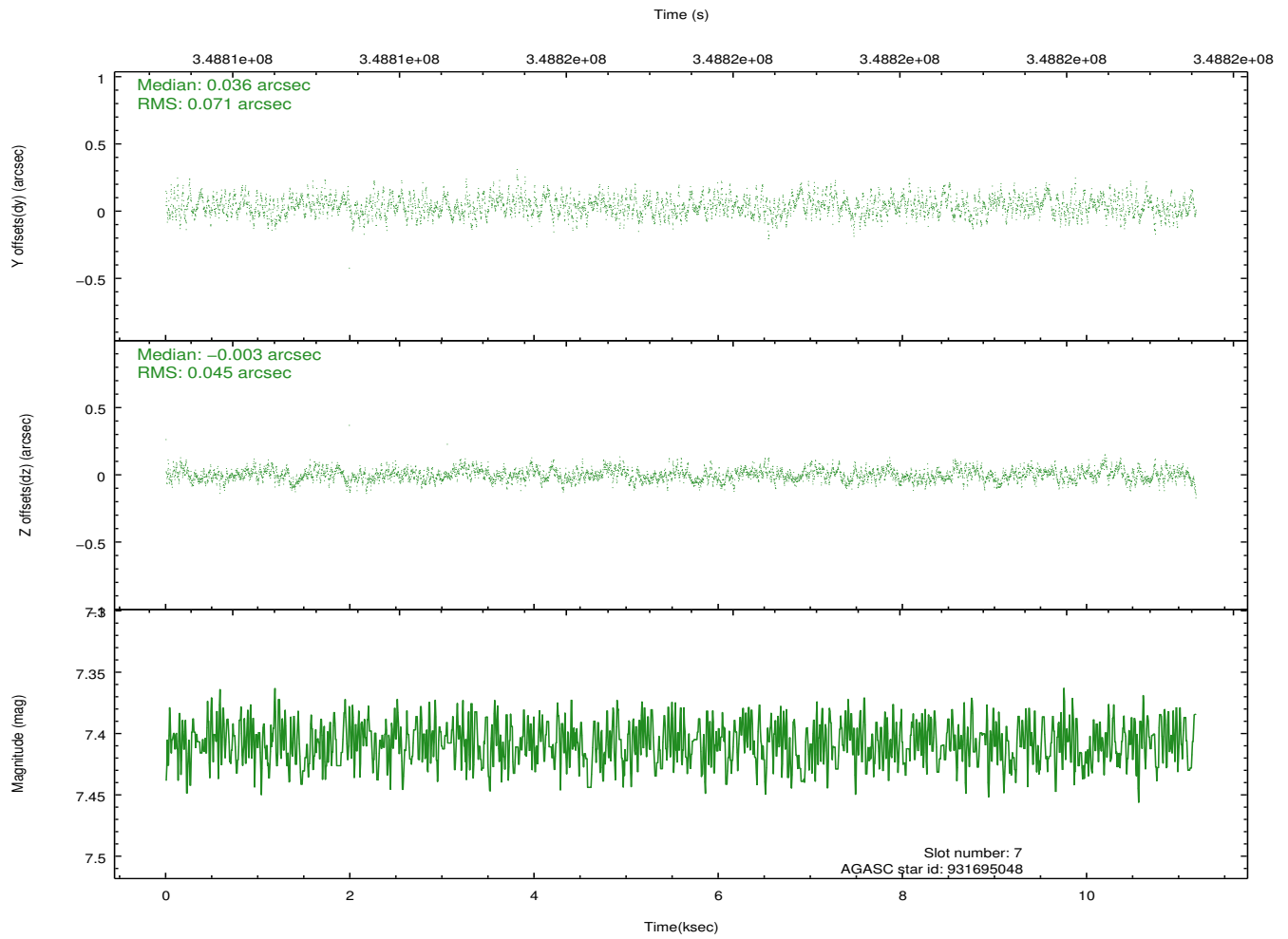
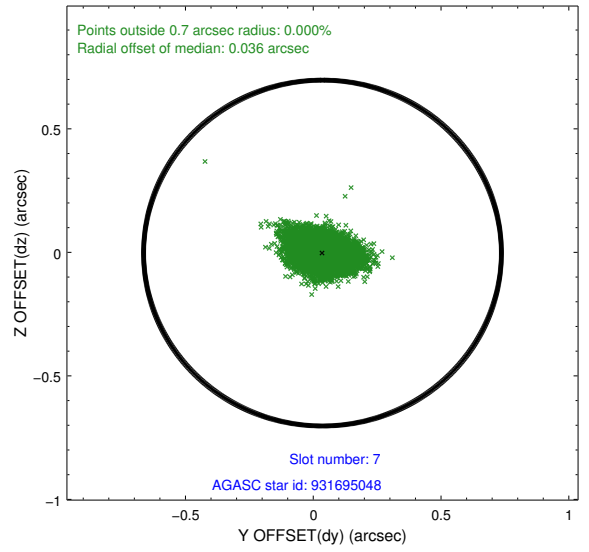
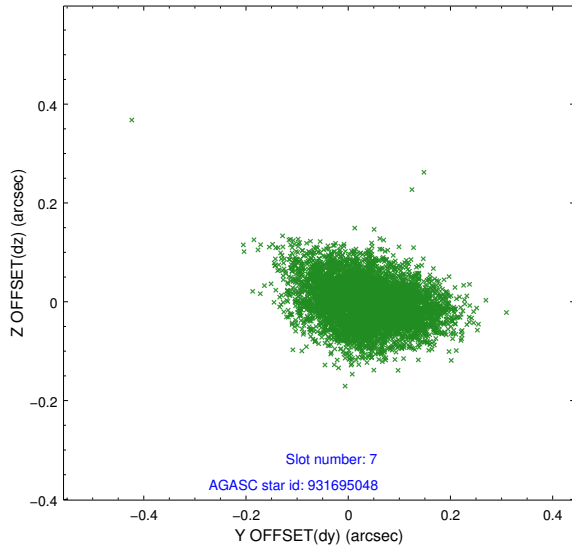
2.4.3 Slot 5



2.4.4 Slot 6

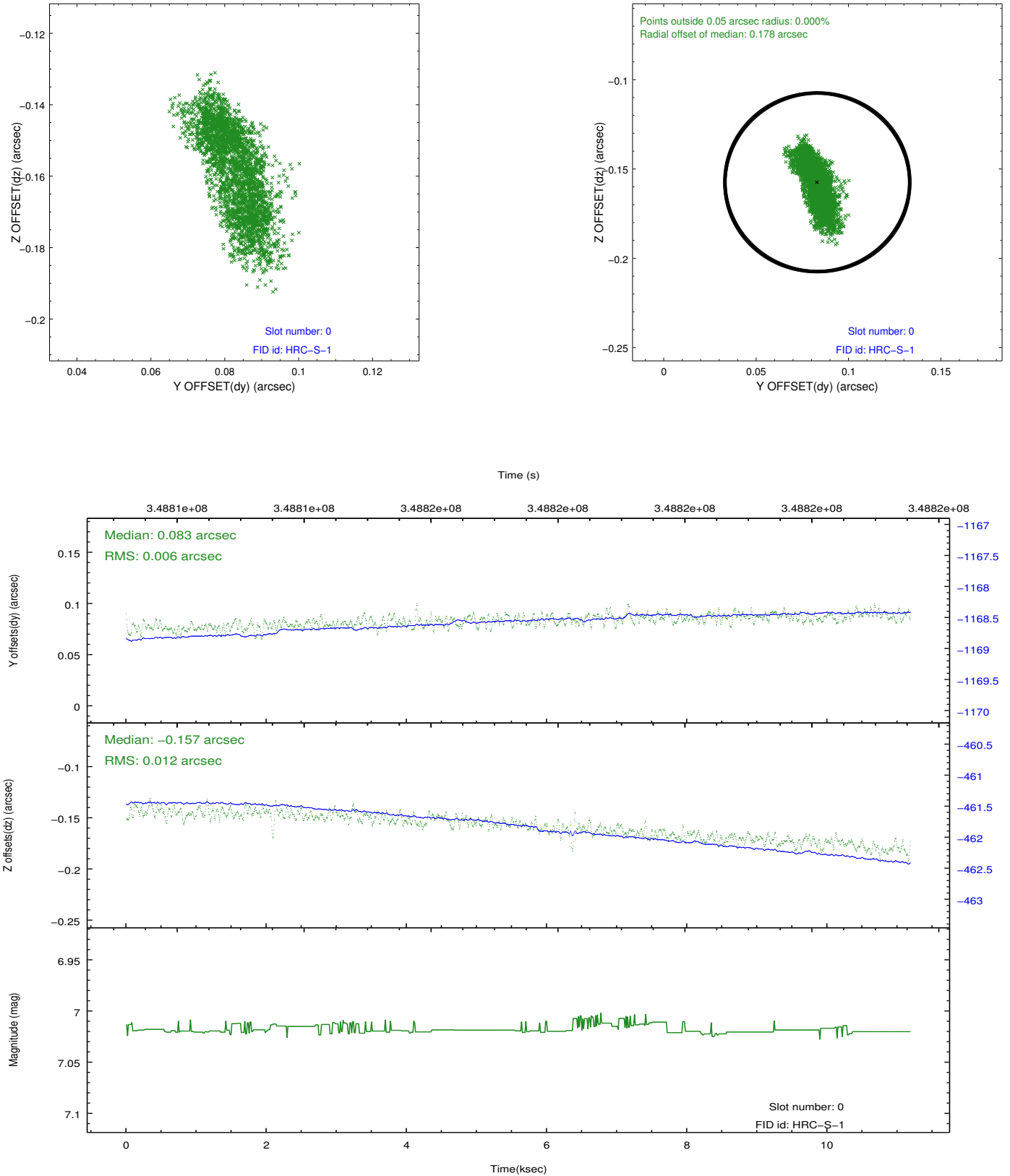


2.4.5 Slot 7

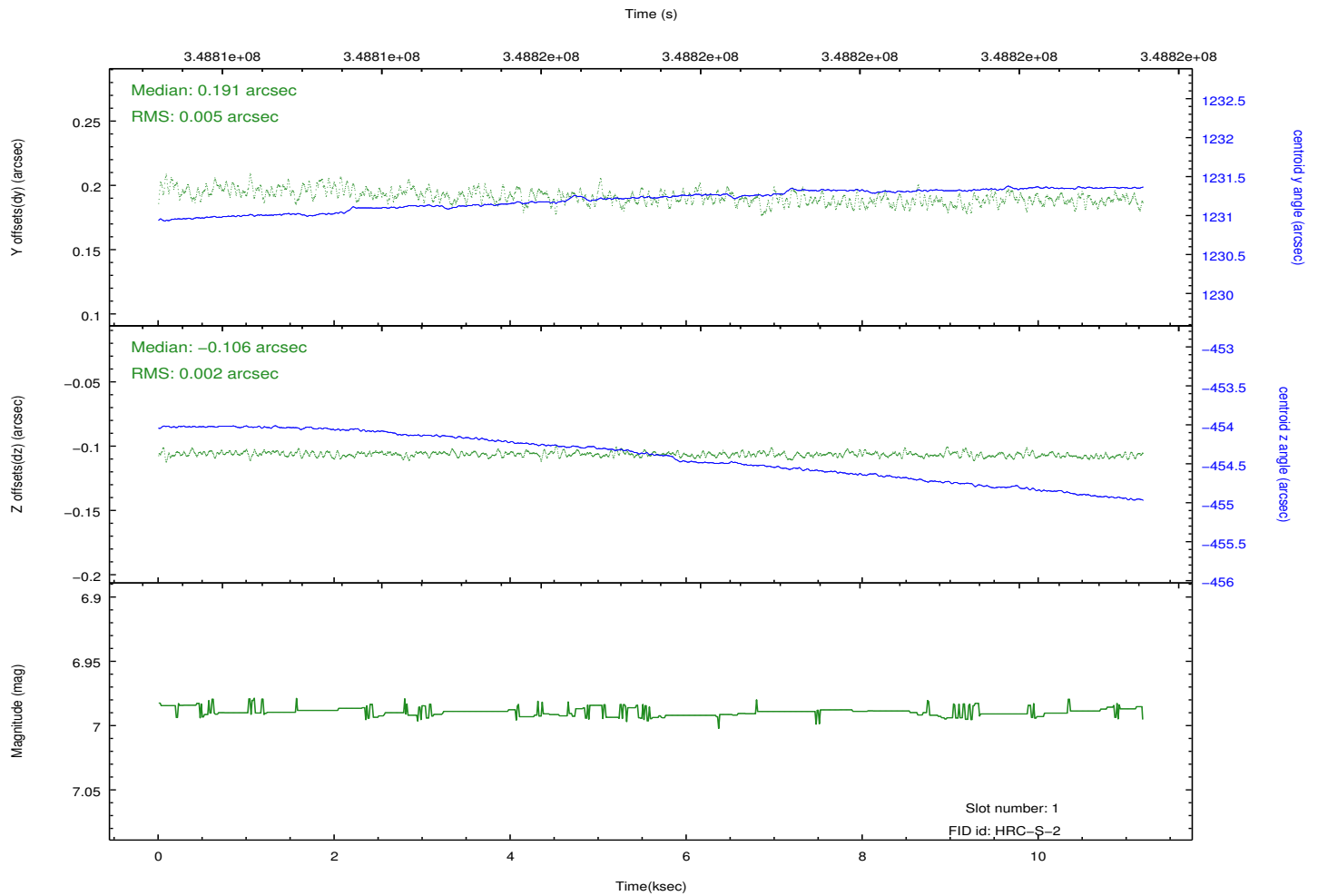
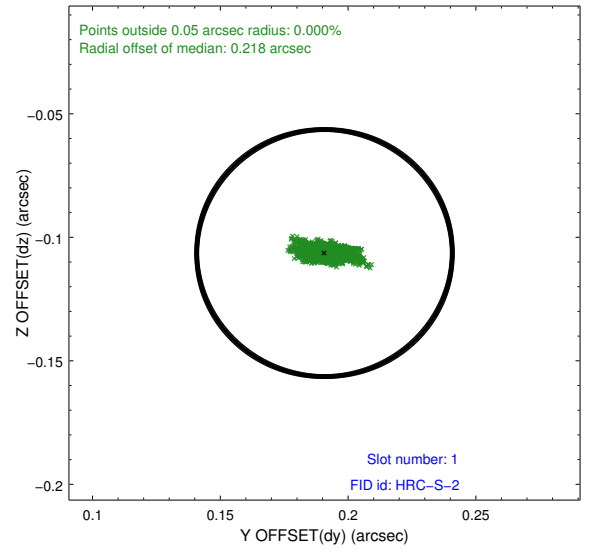
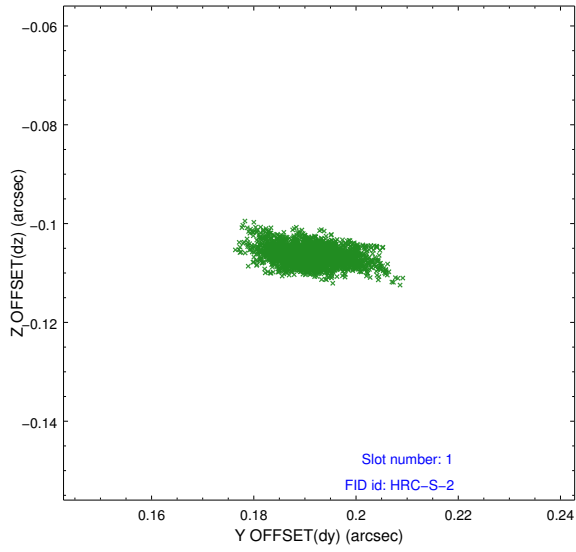


2.5 FID Slots

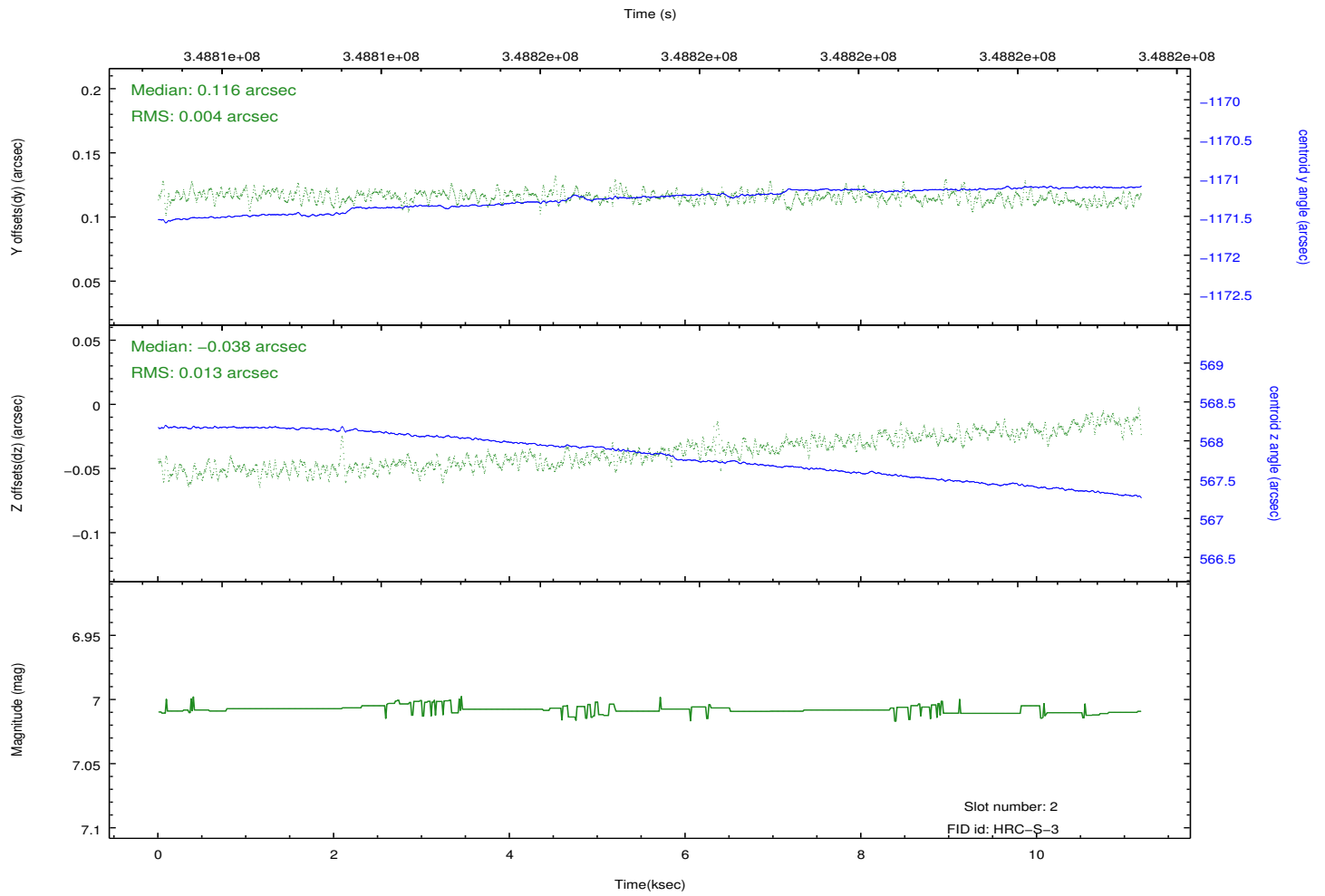
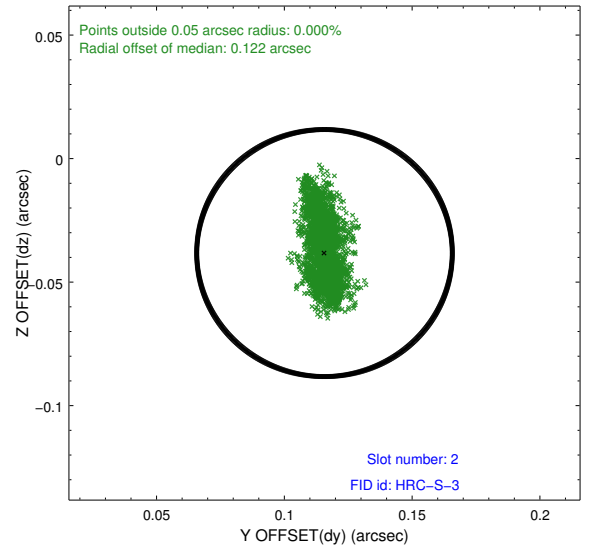
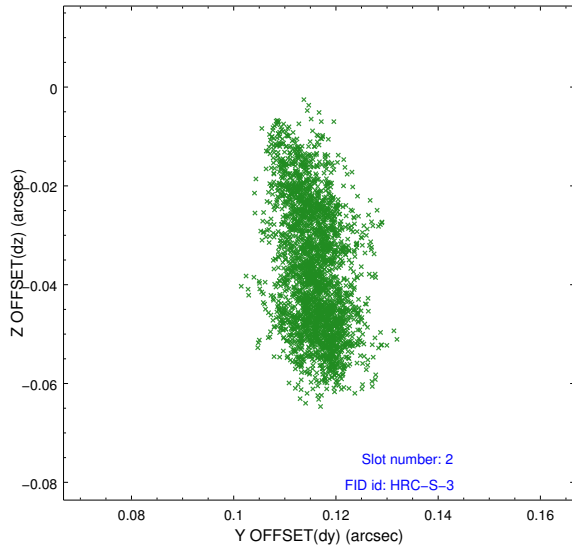
2.5.1 Slot 0



2.5.2 Slot 1

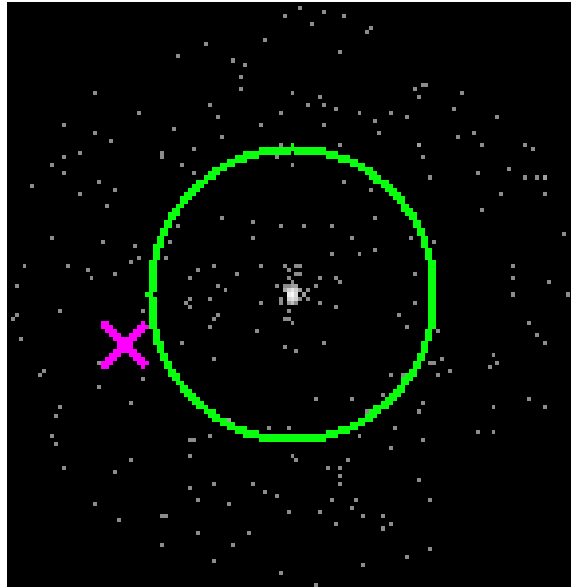


2.5.3 Slot 2

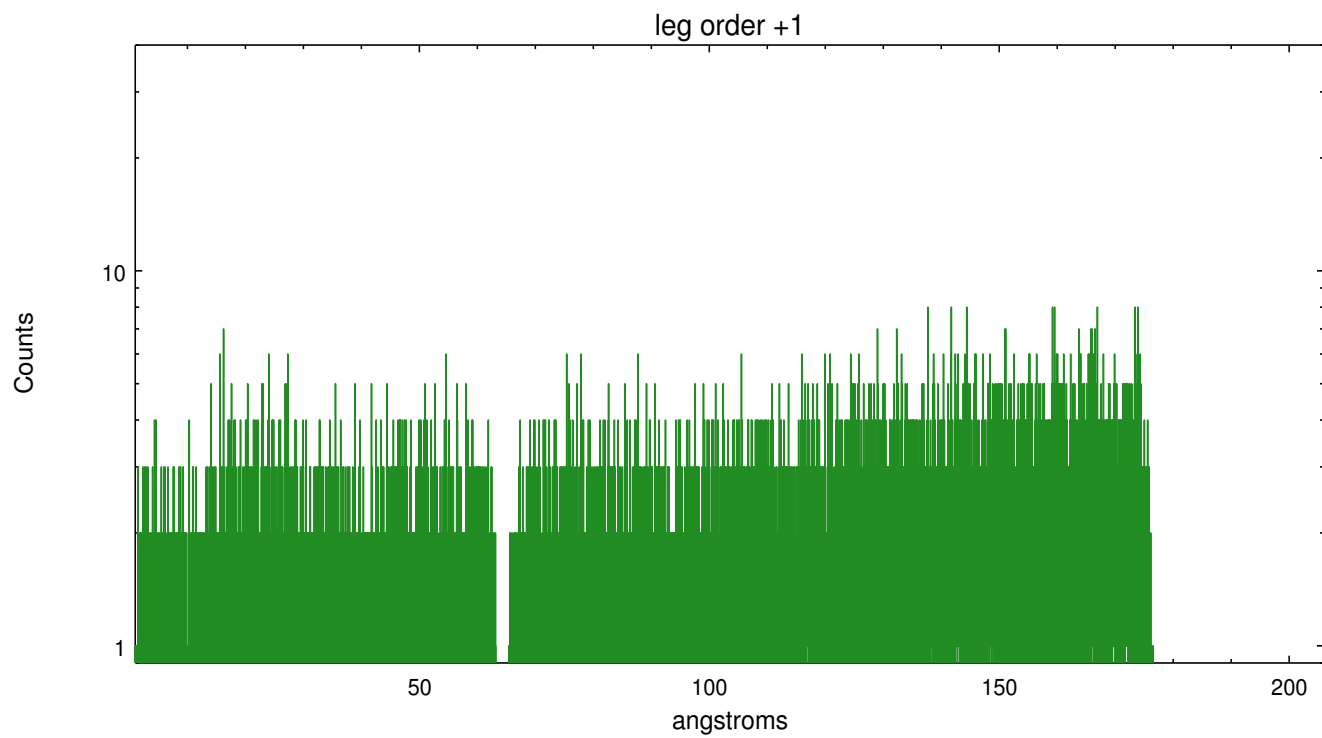
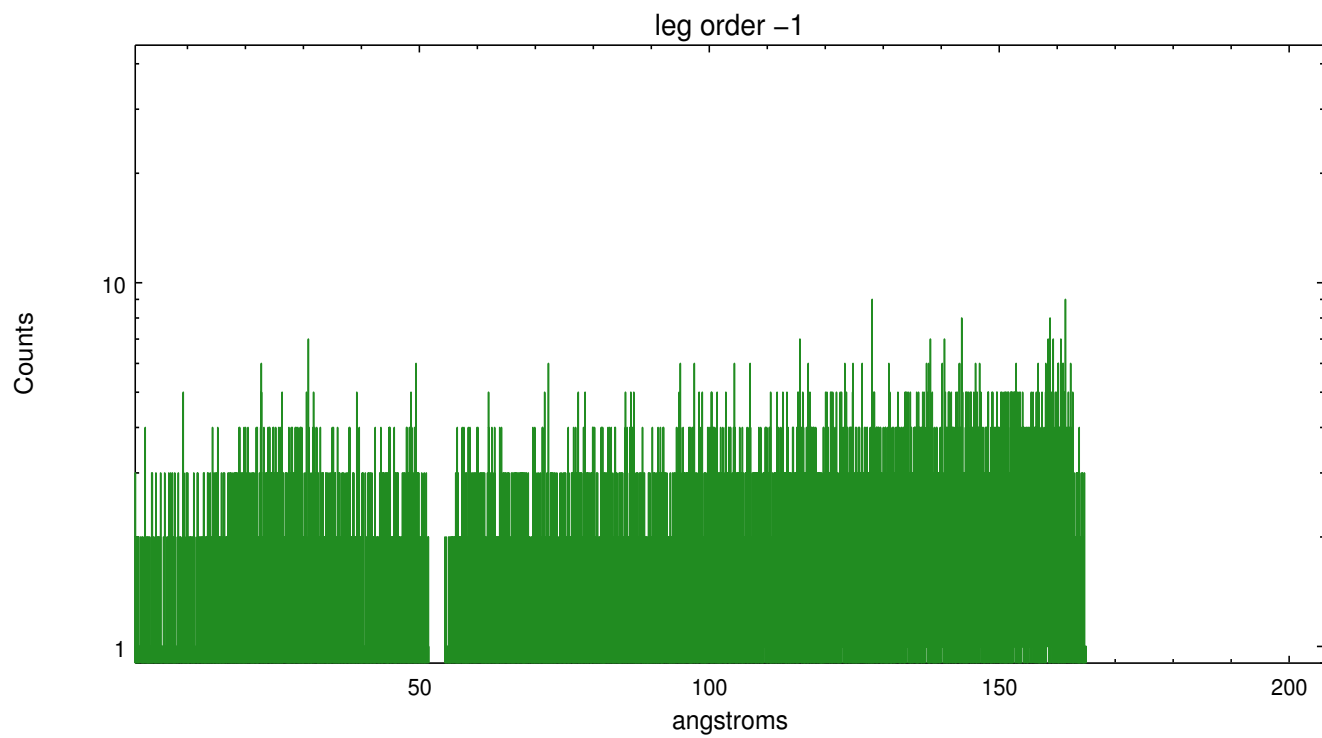


3 Gratings

3.1 LETG Arm



LETG Zero Order



A Summary

A.1 Status

V&V Scientist	Joy Nichols
V&V Date (YYYY-MM-DD)	2012.08.22
V&V Edition	1
V&V Disposition and Status	OK
V&V Charge Time	11.1858255

A.2 Comments