

V&V Reference Report

L2 ASCDS Version : 8.4.5

Observation 10981 - L2 Version 2
Chandra X-Ray Center

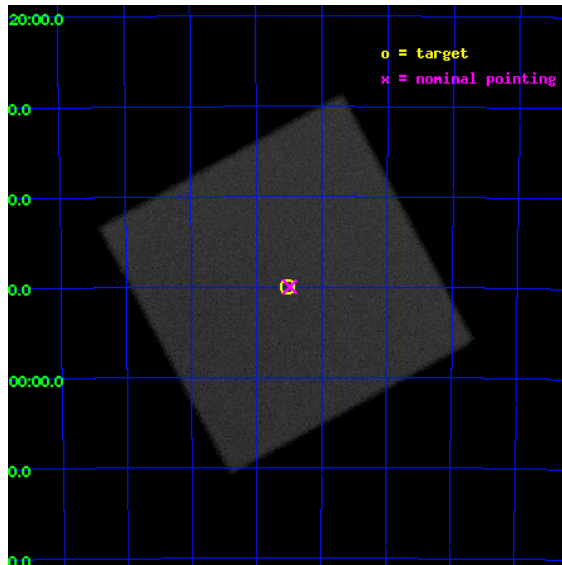
L2 Processing Date : Jul 5 2012

Contents

1	Front	2
2	OBI	3
2.1	OBI	3
2.1.1	Images	3
2.1.2	Parameters	4
2.1.3	Events	4
2.2	Compared Parameters	5
2.3	Aspect	6
2.4	Star Slots	9
2.4.1	Slot 3	9
2.4.2	Slot 4	10
2.4.3	Slot 5	11
2.4.4	Slot 6	12
2.4.5	Slot 7	13
2.5	FID Slots	14
2.5.1	Slot 0	14
2.5.2	Slot 1	15
2.5.3	Slot 2	16
A	Summary	17
A.1	Status	17
A.2	Comments	17

1 Front

seq_num	200613	Sequence number
obs_id	10981	Observation id
title	The Ups and Downs of Alpha Centauri	Proposal title
observer	Dr. Thomas Ayres	Principal investigator
object	Alpha Centauri	Source name
ra_targ	219.880833	Observer's specified target RA [deg]
dec_targ	-60.833611	Observer's specified target Dec [deg]
ra_nom	219.87193162927	Nominal RA [deg]
dec_nom	-60.833228032099	Nominal Dec [deg]
roll_nom	196.58249036731	Nominal Roll [deg]
revision	2	Processing version of data
ontime	10146.731772006	[s]
livetime	10032.481882471	Ontime multiplied by DTCOR
l2events	795436	Number of level 2 events

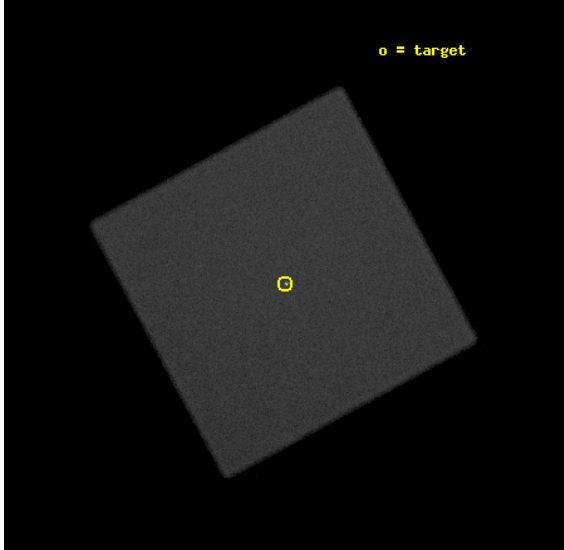


2 OBI

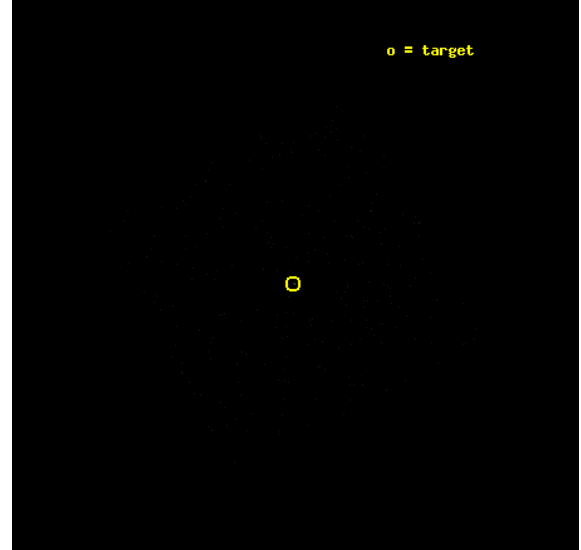
2.1 OBI

2.1.1 Images

Level 1 Image



Level 1 Bad Events



2.1.2 Parameters

obi_num	1	Obi number	sched_exp_time	10000.000000	[s] Scheduled observation exposure time
ascdsver	8.4.5	Processing system revision	ontime	10146.731772006	[s]
caldbver	4.5.0	 	l1events	1226541	Number of level 1 events
date	2012-07-05T07:16:03	Date and time of file creation			
revision	2	Processing version of data			

2.1.3 Events

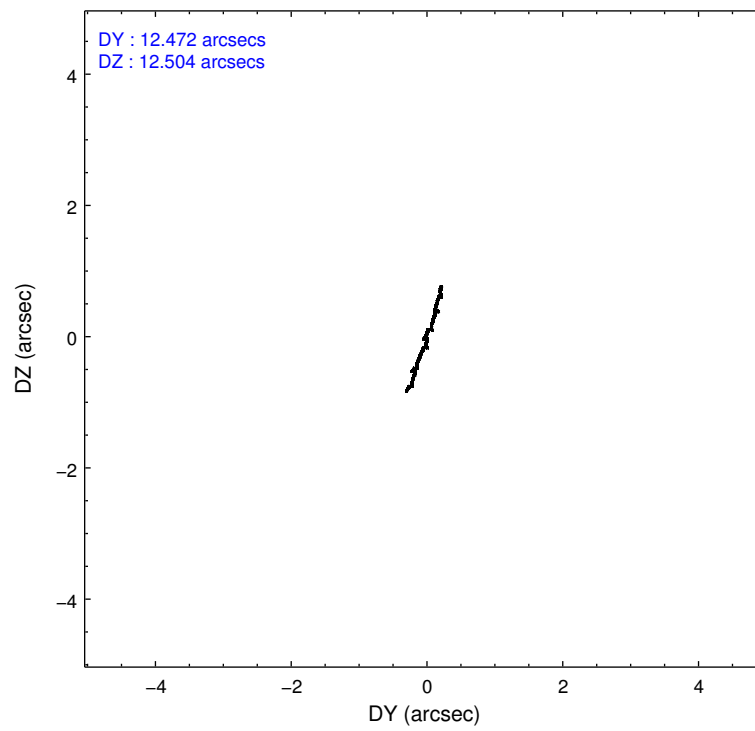
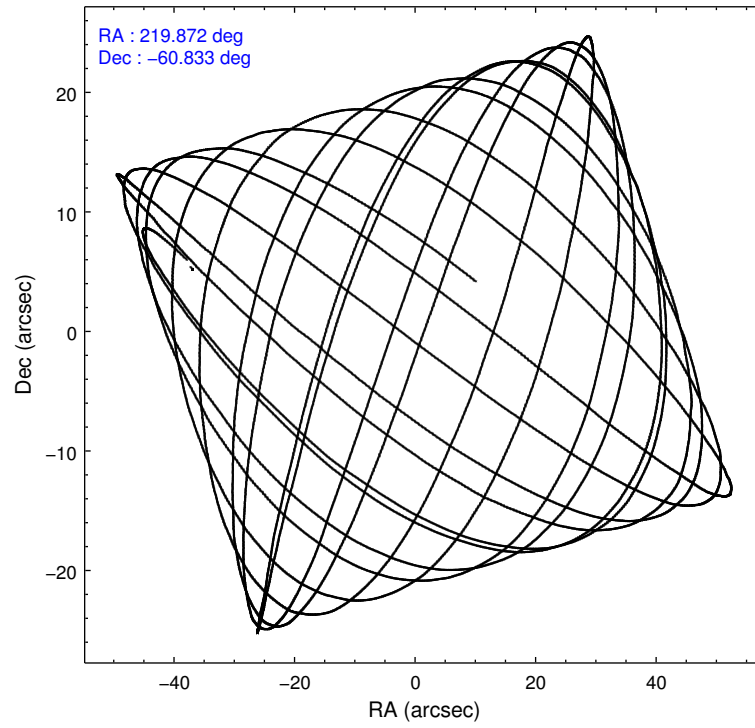
Level 1 Events

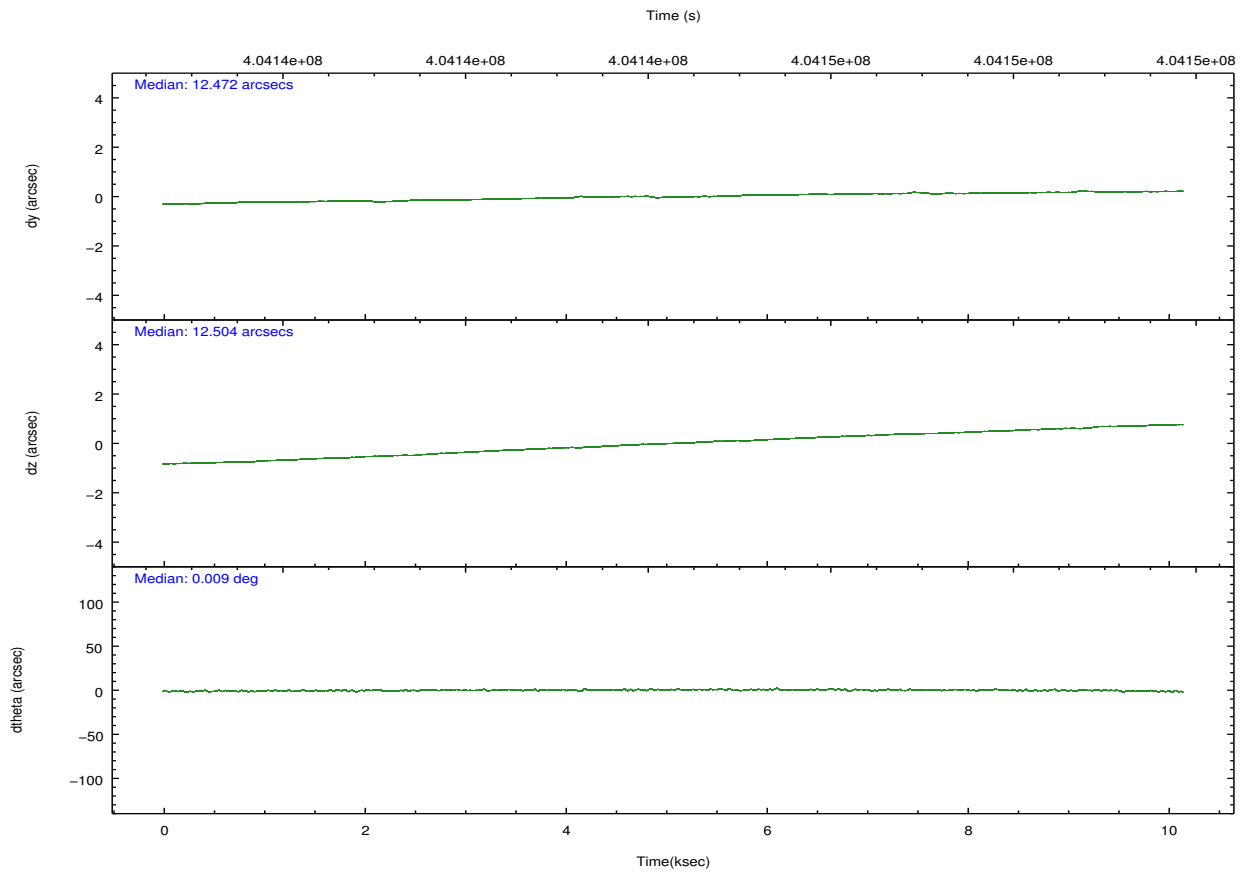
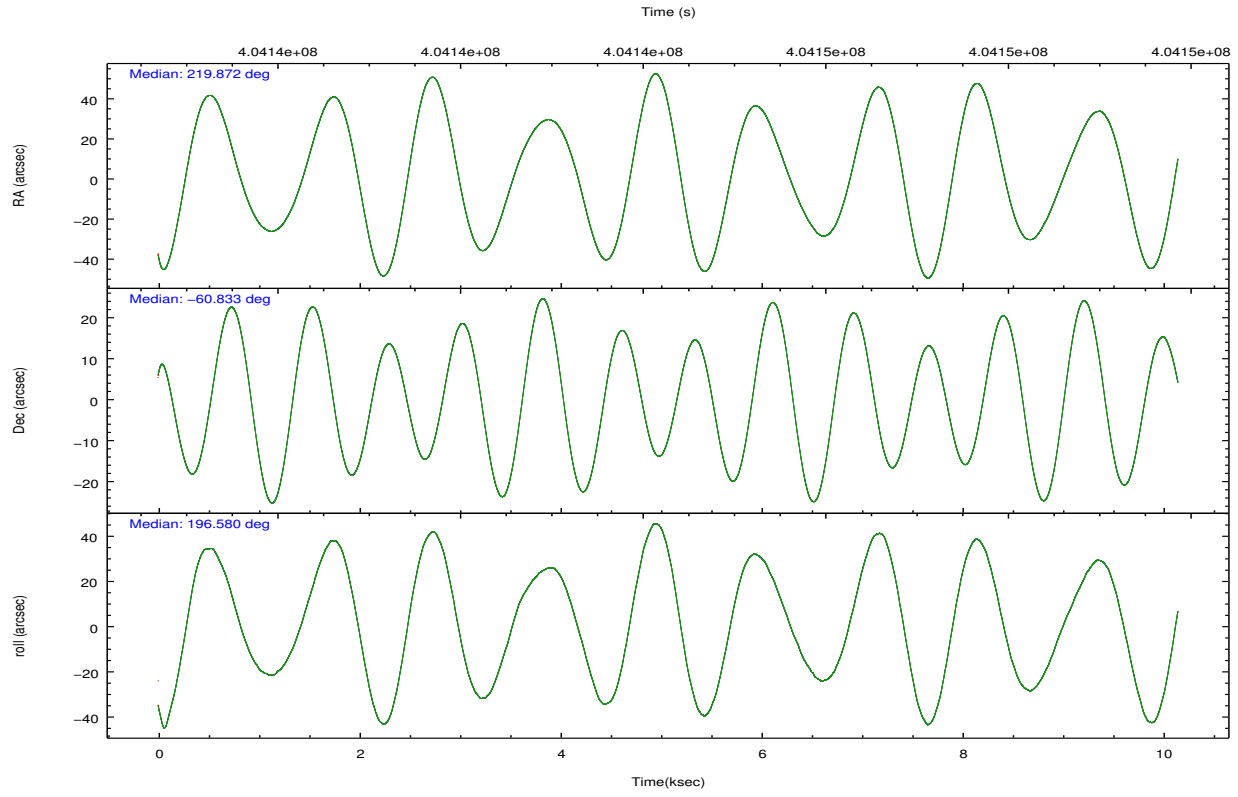
	segment 0
level 1 events	1226541
rejected events	113984
rejected %	9%

2.2 Compared Parameters

Parameter	Planned	Actual	Parameter	Planned	Actual
Instrument	HRC	HRC	Obspar format version number	7	7
Detector	HRC-I	HRC-I	Obspar file type	PREDICTED	ACTUAL
Grating	NONE	NONE	Obspar update status	NONE	UPDATED
Data mode	OBSERVING	OBSERVING			
Observation mode	POINTING	POINTING			
[deg] Pointing RA	219.909581	219.8719316292656			
[deg] Pointing Dec	-60.813047	-60.83322803209947			
[deg] Pointing Roll	196.710849	196.5824903673132			
[mm] SIM focus pos	-1.040293	-1.038866356238299			
[mm] SIM defocus	0	0.001426264420575141			
[mm] SIM translation stage pos	126.985494	126.9829799899862			
[mm] SIM translation stage offset	0	0.002508901615314585			
[s] Observation start time (MET)	404139337.184000	404138161.07122			
Observation start date	2010-10-22T12:54:31	2010-10-22T12:36:01			
[s] Observation end time (MET)	404149337.184000	404150385.73435			
Observation end date	2010-10-22T15:41:11	2010-10-22T15:59:45			

2.3 Aspect



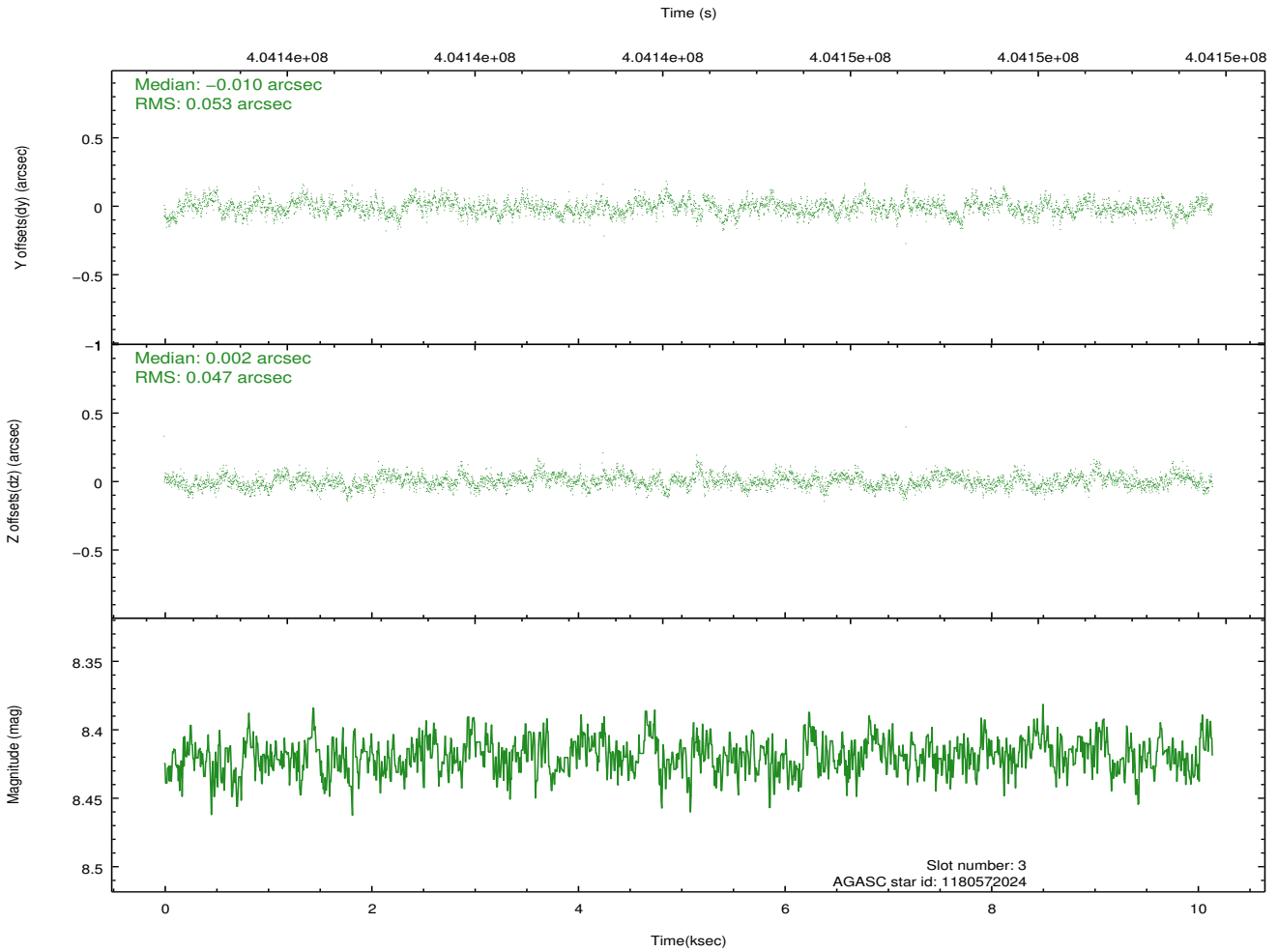
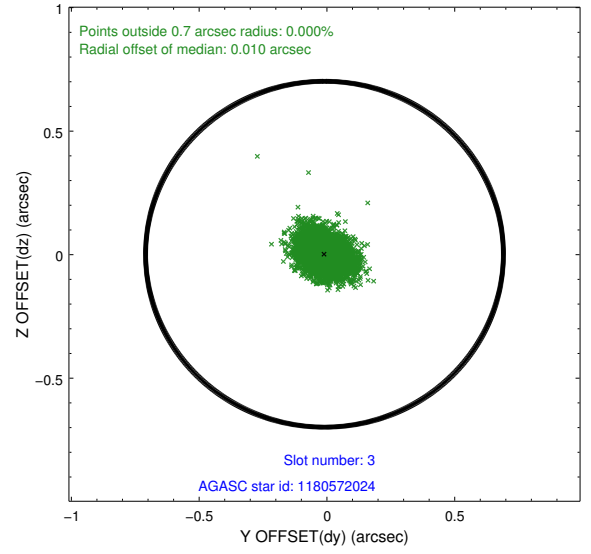
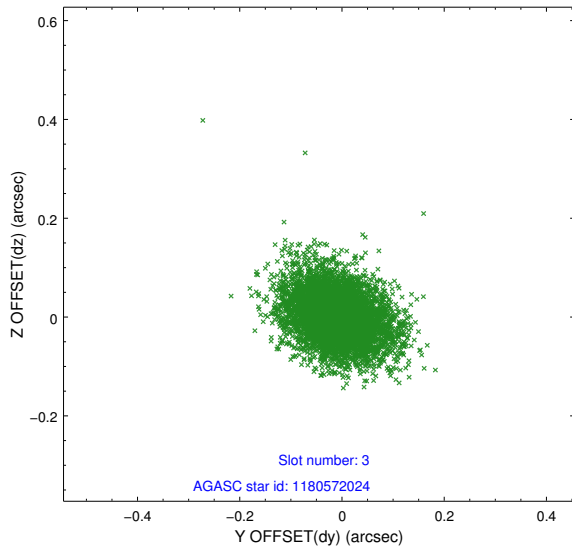


Slot Statistics

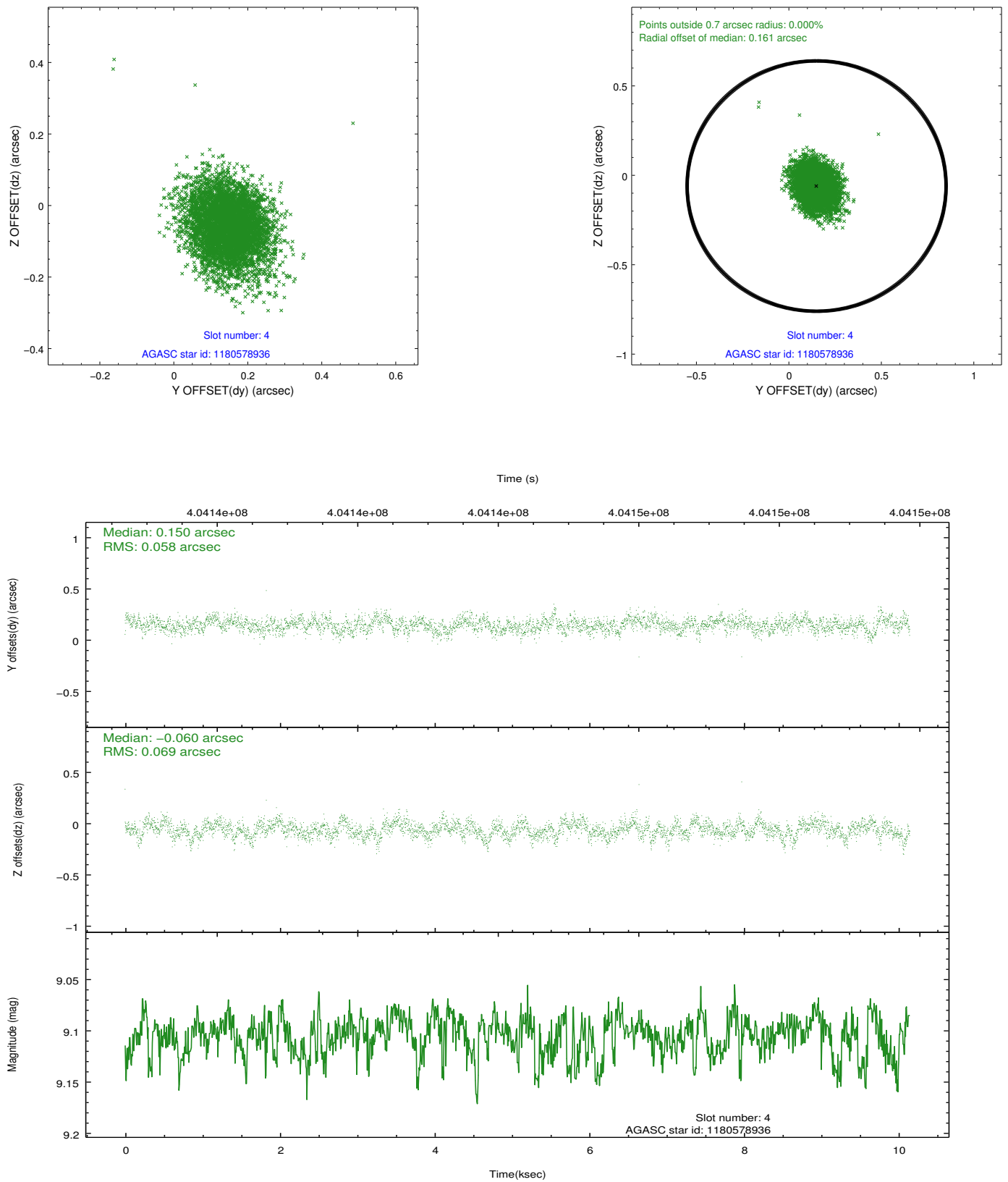
slot	status	id	mag	n_pts	med_dy	med_dz	dr1	dr2	ra	dec	mean_y	mean_z
0	FID	HRC-I-1	6.96	2476	-0.052	0.058	0.014	0.025	0.000000	0.000000	-768.26	-1300.42
1	FID	HRC-I-2	6.99	2476	0.219	-0.150	0.017	0.035	0.000000	0.000000	844.33	-1302.74
2	FID	HRC-I-3	7.04	2476	-0.049	0.000	0.011	0.021	0.000000	0.000000	-1196.37	1003.56
3	GUIDE	1180572024	8.42	4943	-0.010	0.002	0.074	0.124	220.930377	-60.981487	-1529.38	1106.91
4	GUIDE	1180578936	9.10	4949	0.150	-0.060	0.094	0.156	220.919358	-61.155393	-1322.00	1698.04
5	GUIDE	1180589152	9.27	4941	-0.121	-0.084	0.107	0.170	219.760705	-61.382926	835.07	1892.02
6	GUIDE	1180603392	9.26	4937	-0.067	-0.009	0.108	0.181	221.526441	-61.206550	-2267.95	2196.86
7	GUIDE	1180612104	9.01	4947	0.053	0.152	0.089	0.145	220.502279	-60.631704	-1189.33	-319.00

2.4 Star Slots

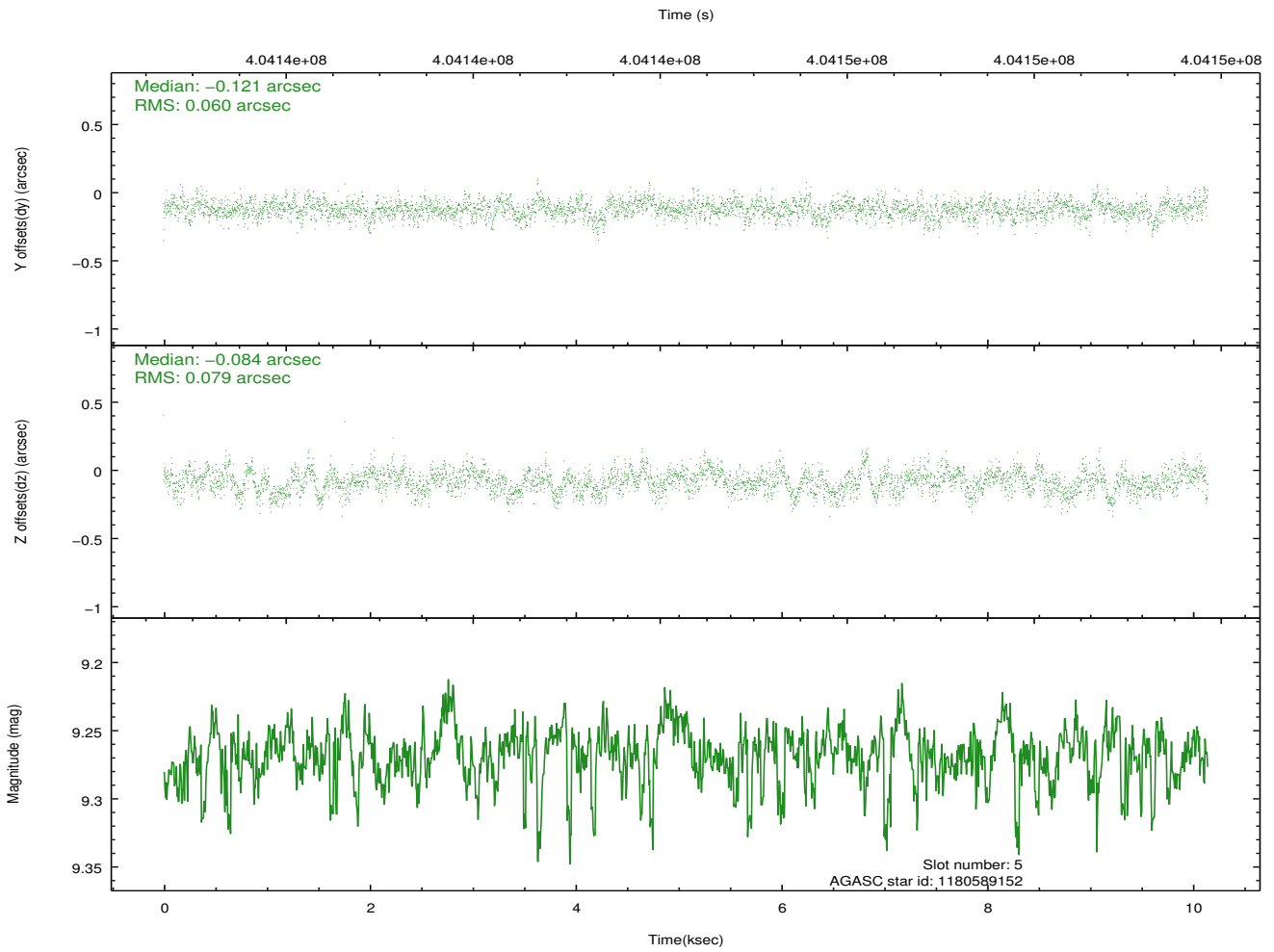
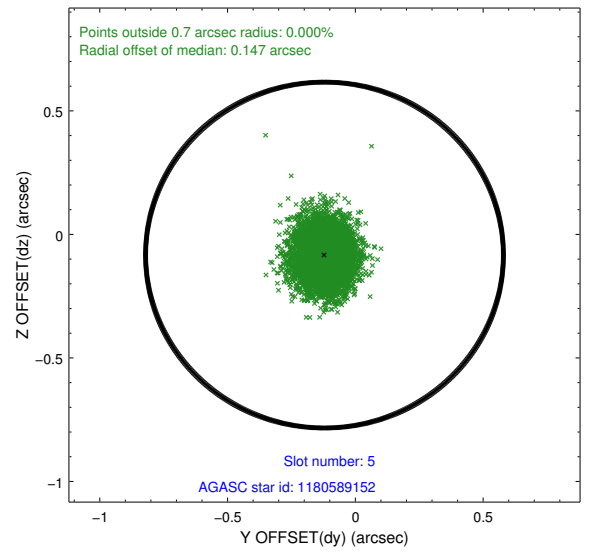
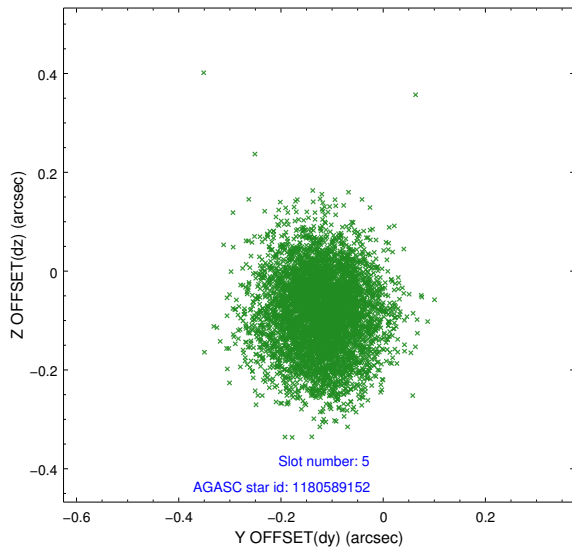
2.4.1 Slot 3



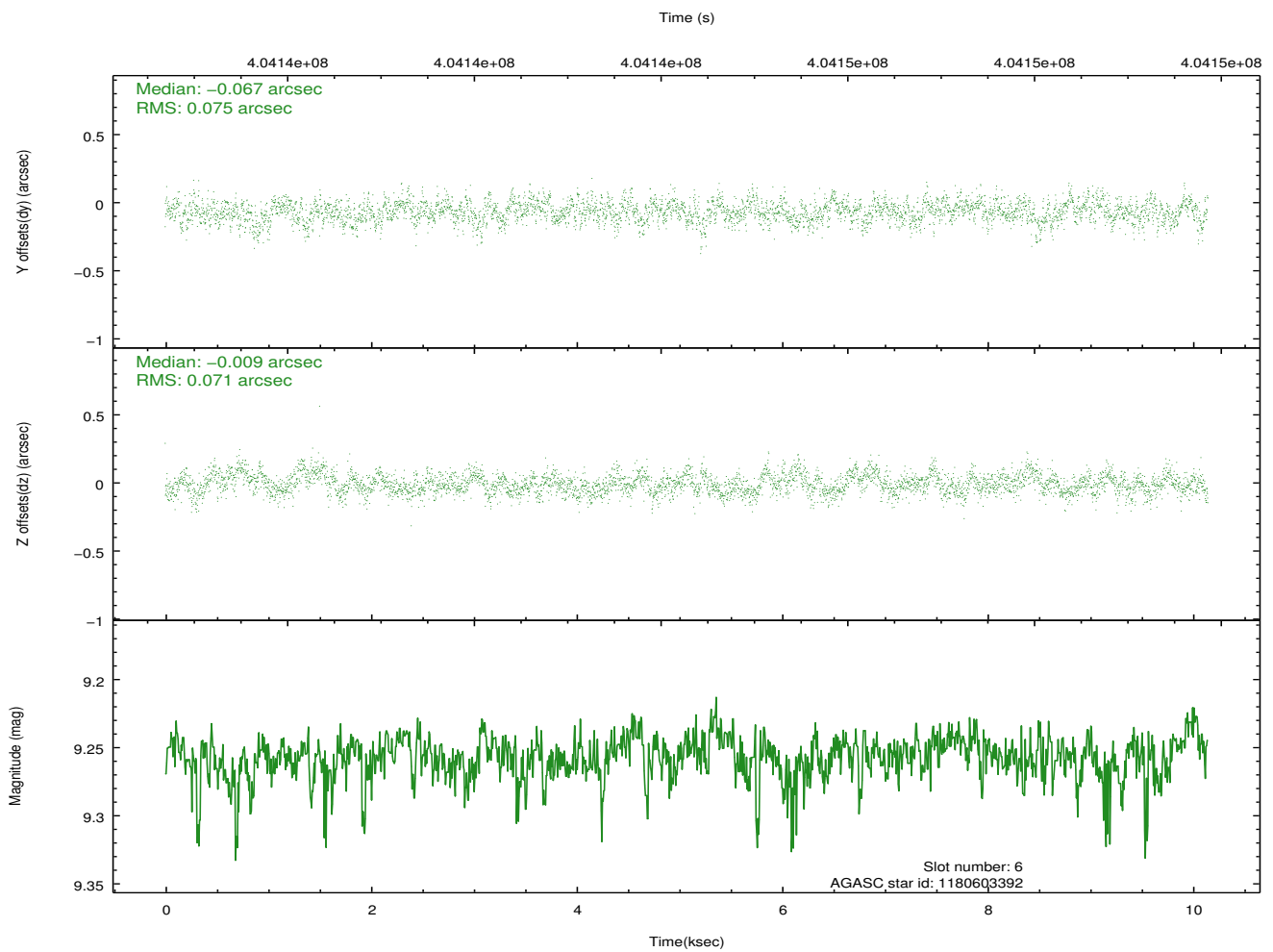
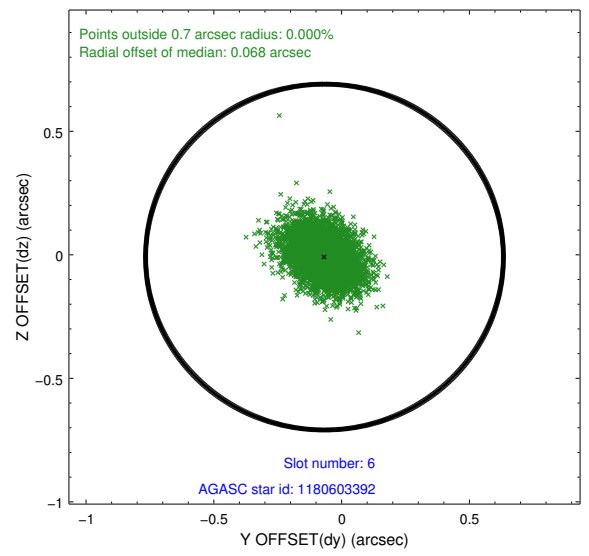
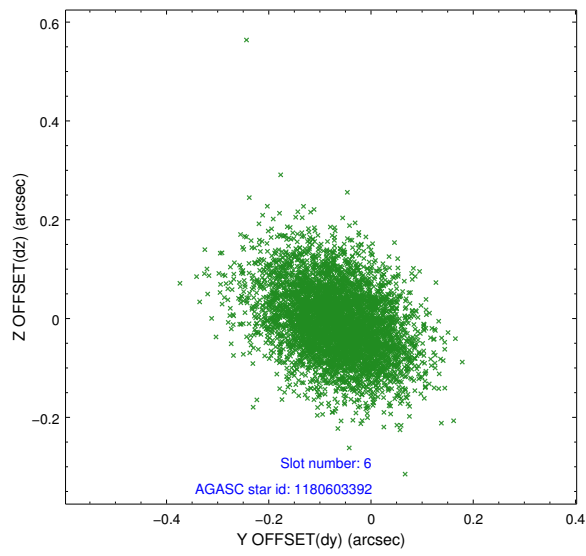
2.4.2 Slot 4



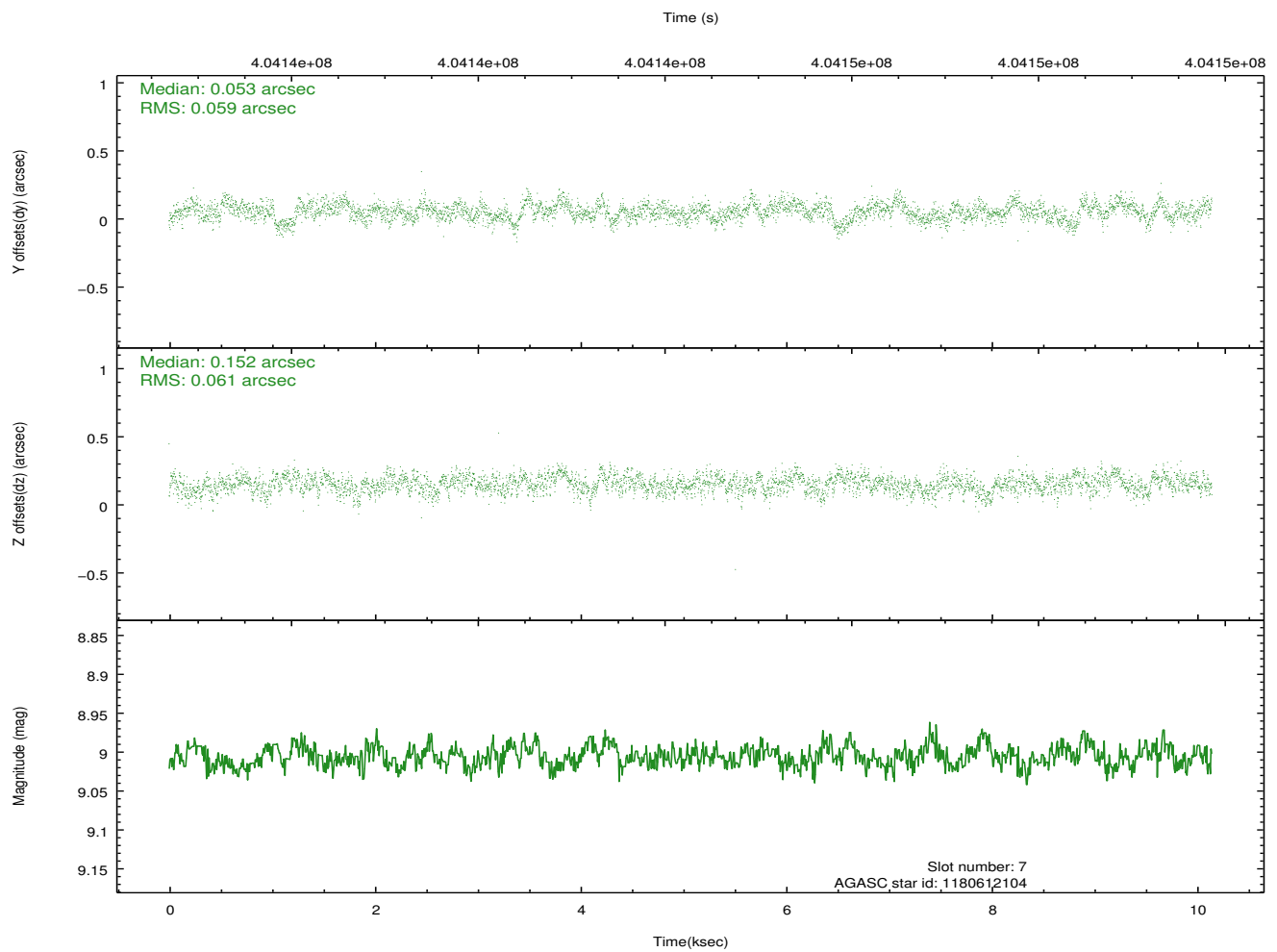
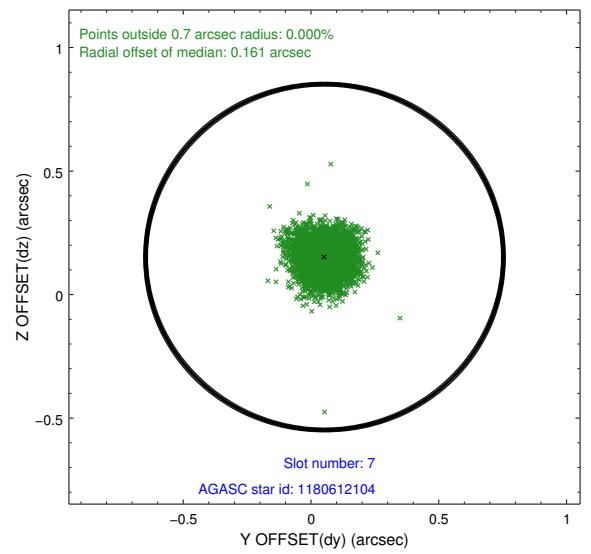
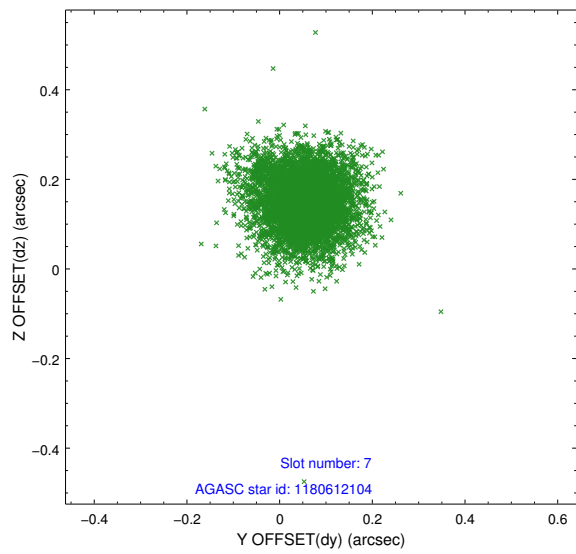
2.4.3 Slot 5



2.4.4 Slot 6

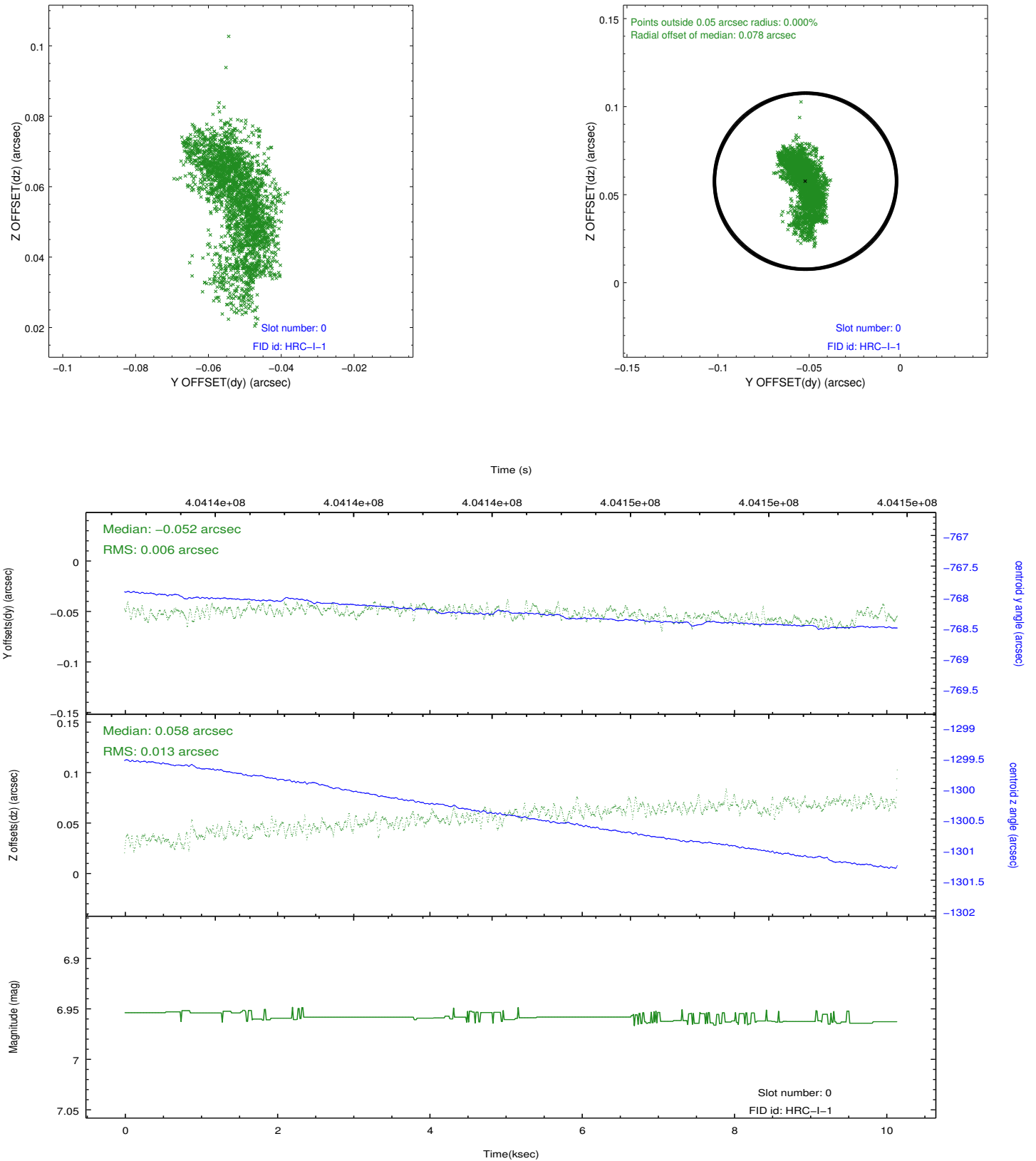


2.4.5 Slot 7

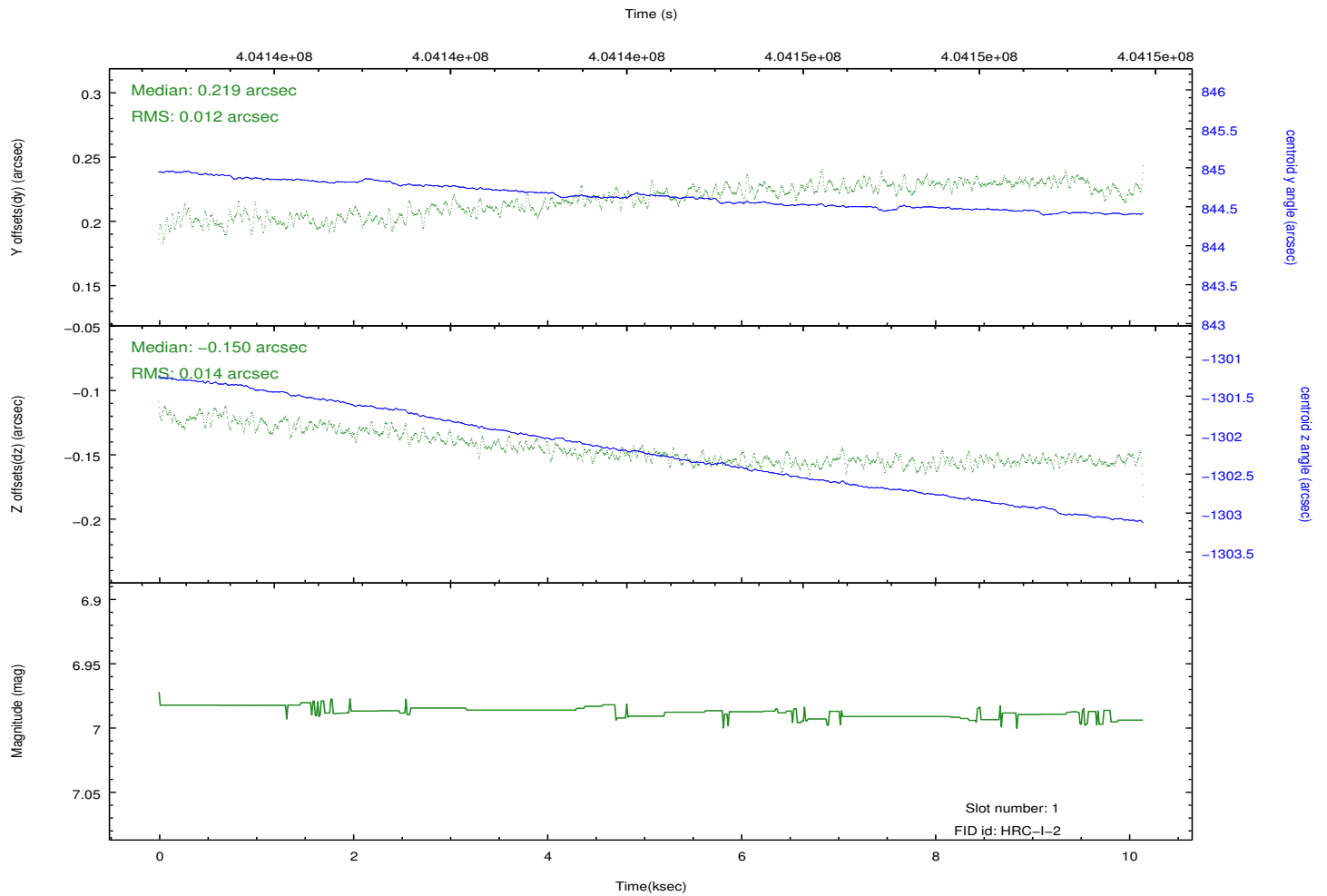
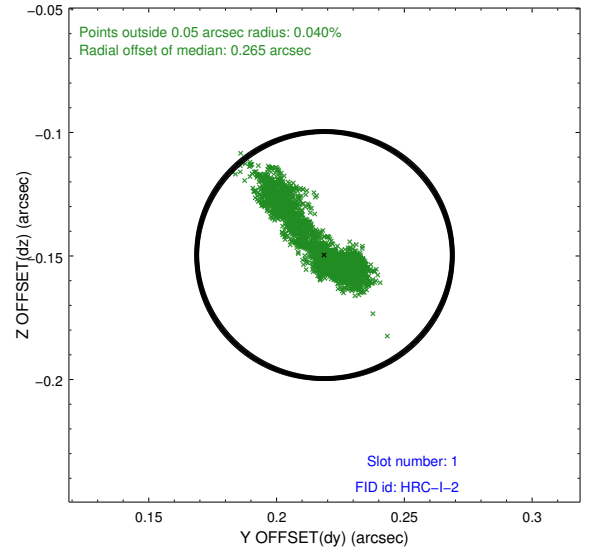
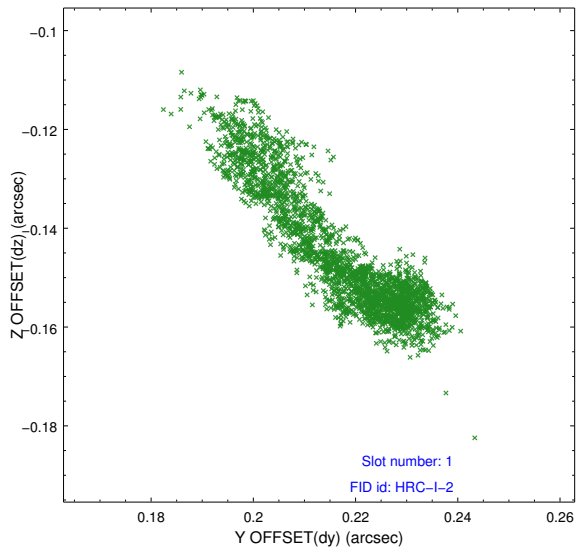


2.5 FID Slots

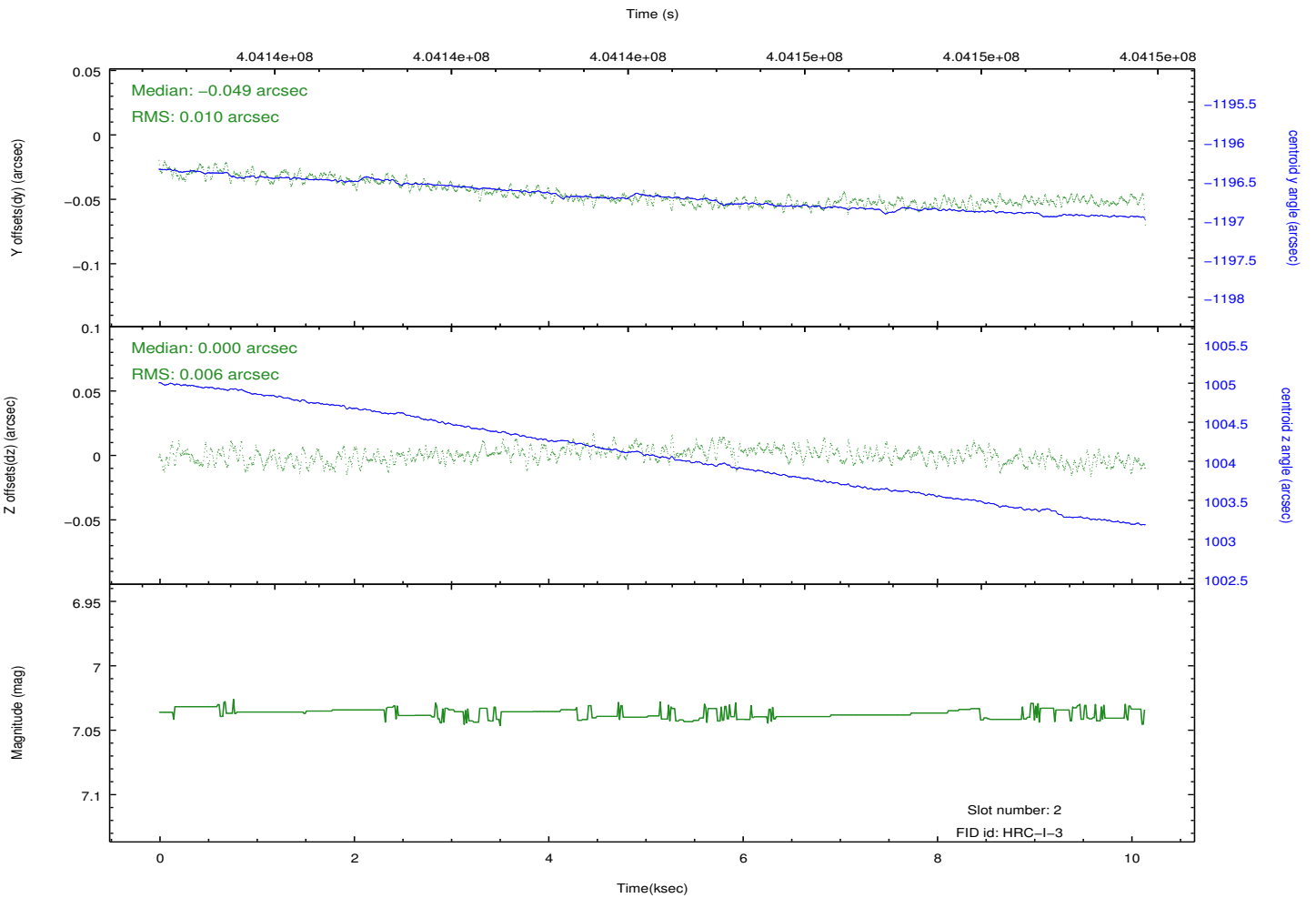
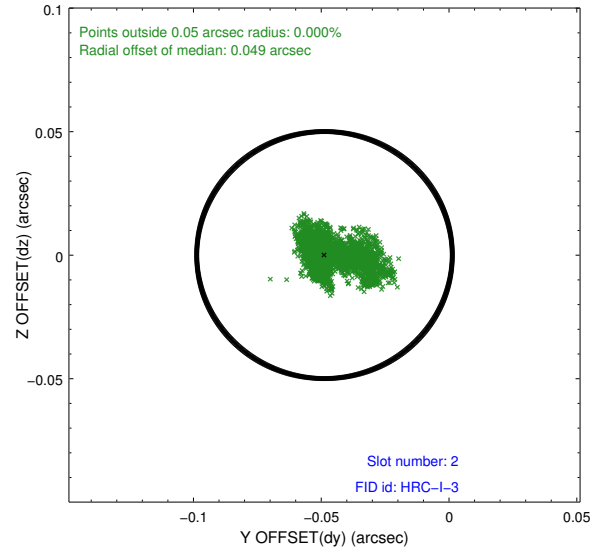
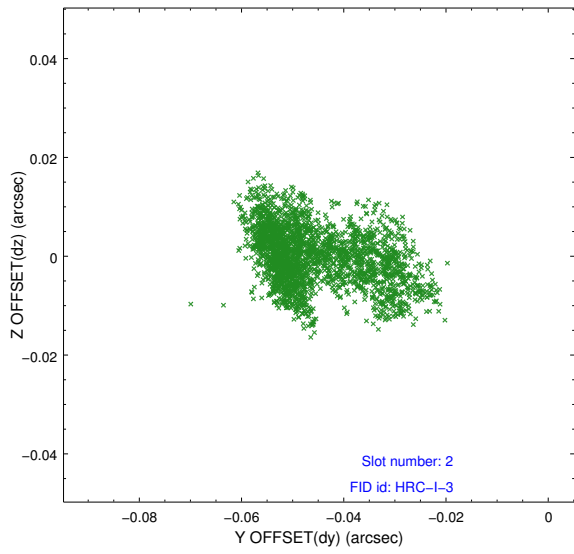
2.5.1 Slot 0



2.5.2 Slot 1



2.5.3 Slot 2



A Summary

A.1 Status

V&V Scientist	Jen Lauer
V&V Date (YYYY-MM-DD)	2012.07.13
V&V Edition	1
V&V Disposition and Status	OK
V&V Charge Time	10.146731771946

A.2 Comments