

V&V Reference Report

L2 ASCDS Version : 8.4.5

Observation 11041 - L2 Version 2
Chandra X-Ray Center

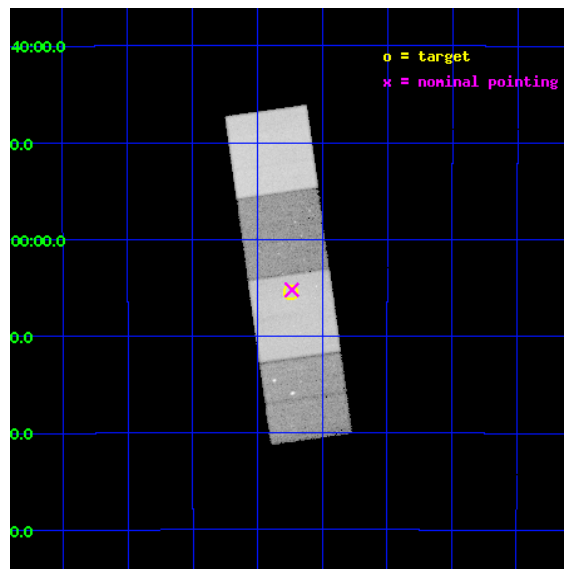
L2 Processing Date : Jun 25 2012

Contents

1	Front	2
2	OBI	3
2.1	OBI	3
2.1.1	Images	3
2.1.2	Bias	3
2.1.3	Parameters	4
2.1.4	Events	4
2.2	Compared Parameters	5
2.3	Aspect	6
2.4	Star Slots	9
2.4.1	Slot 3	9
2.4.2	Slot 4	10
2.4.3	Slot 5	11
2.4.4	Slot 6	12
2.4.5	Slot 7	13
2.5	FID Slots	14
2.5.1	Slot 0	14
2.5.2	Slot 1	15
2.5.3	Slot 2	16
A	Summary	17
A.1	Status	17
A.2	Comments	17

1 Front

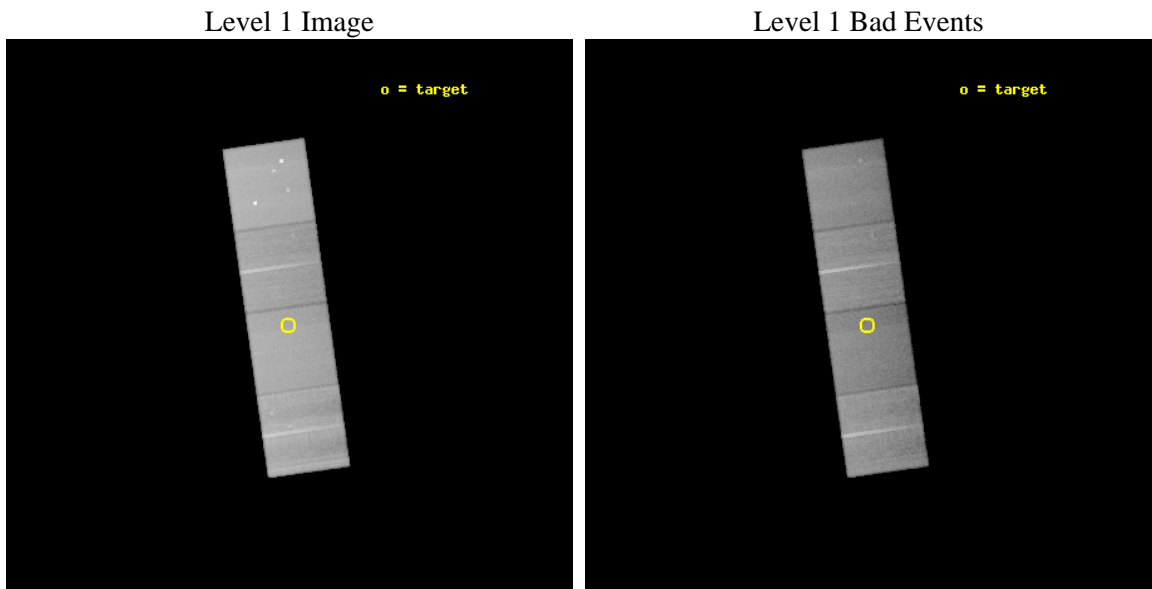
seq_num	401076	Sequence number
obs_id	11041	Observation id
title	A Chandra survey of quiescent black hole X-ray binaries	Proposal t
observer	Prof. Albert Kong	Principal investigator
object	H1705-250	Source name
dtycycle	0	
cycle	P	events from which exps? Prim/Second/Both
ra_targ	257.060833	Observer's specified target RA [deg]
dec_targ	-25.091389	Observer's specified target Dec [deg]
ra_nom	257.05868669302	Nominal RA [deg]
dec_nom	-25.086943742996	Nominal Dec [deg]
roll_nom	81.950317682366	Nominal Roll [deg]
revision	2	Processing version of data
ontime	48139.90037024	Sum of GTIs [s]
livetime	47510.917131824	Livetime [s]
ontime5	48139.90037024	Sum of GTIs [s]
ontime6	48133.618379474	Sum of GTIs [s]
ontime7	48139.90037024	Sum of GTIs [s]
ontime8	48136.75936991	Sum of GTIs [s]
l2events	526215	Number of level 2 events



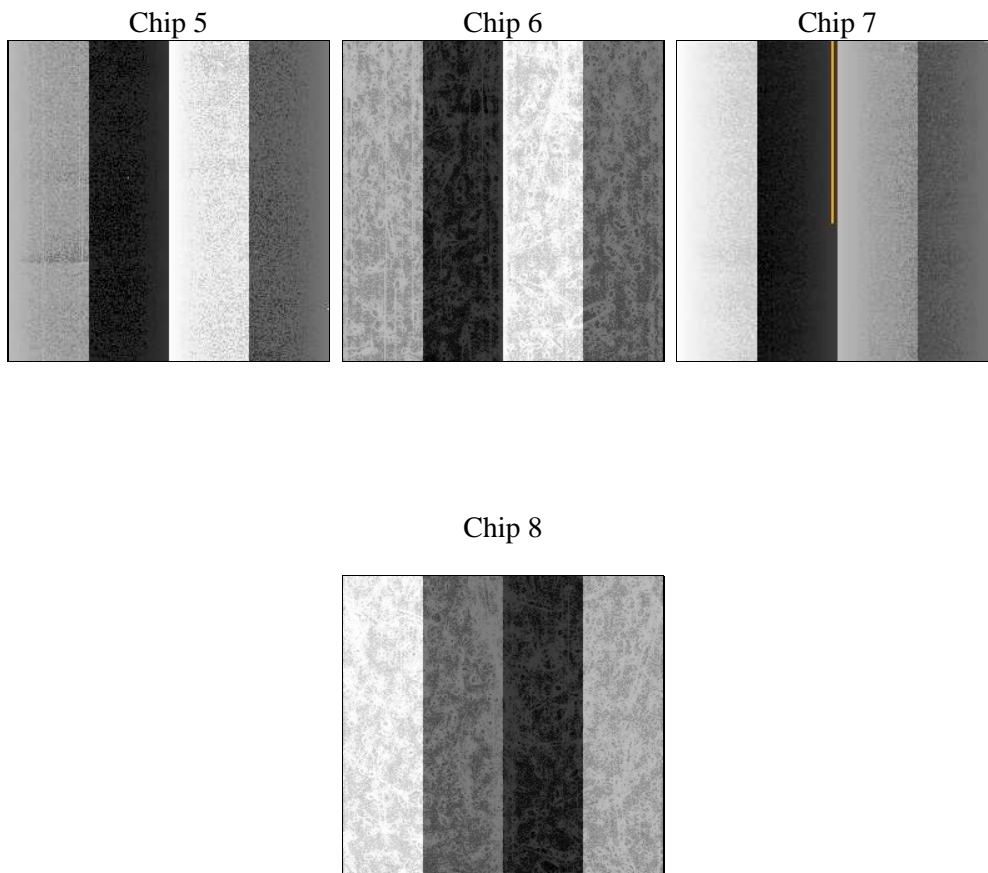
2 OBI

2.1 OBI

2.1.1 Images



2.1.2 Bias



2.1.3 Parameters

obi_num	0	Obi number	sched_exp_time	48000.000000	[s] Scheduled observation exposure time
ascdsver	8.4.5	Processing system revision	ontime	48139.90037024	Sum of GTIs [s]
caldsver	4.4.10	 	ontime5	48139.90037024	Sum of GTIs [s]
date	2012-06-25T11:15:31	Date and time of file creation	ontime6	48133.618379474	Sum of GTIs [s]
revision	2	Processing version of data	ontime7	48139.90037024	Sum of GTIs [s]
			ontime8	48136.75936991	Sum of GTIs [s]
			l1events	1876520	Number of level 1 events

2.1.4 Events

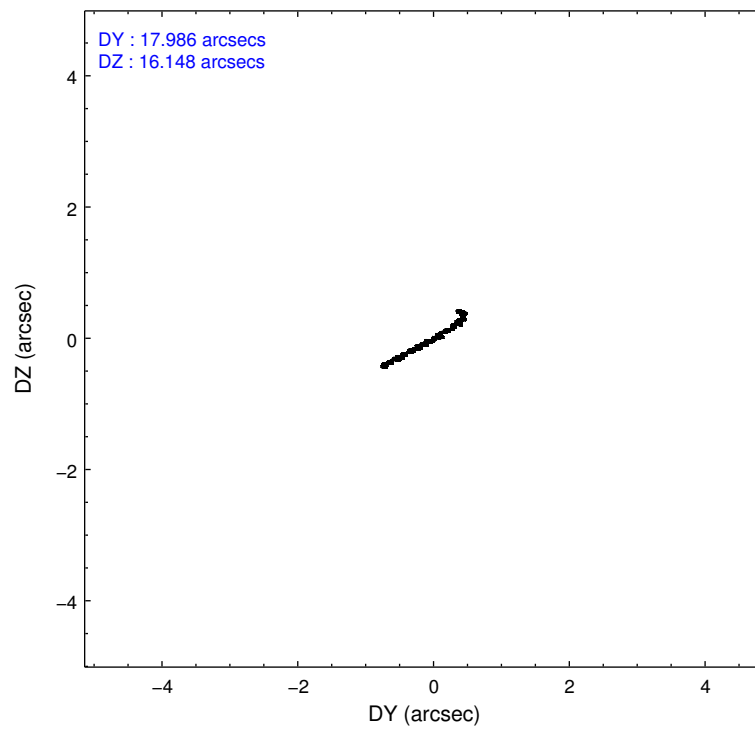
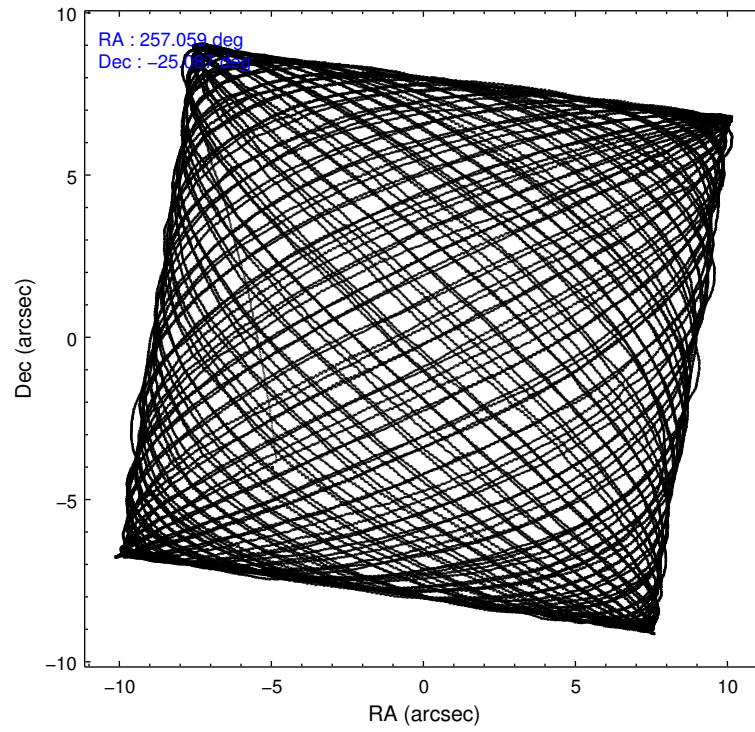
	ccd 5	ccd 6	ccd 7	ccd 8
level 1 events	566108	378123	448896	483393
rejected events	288183	335649	250917	359365
rejected %	50%	88%	55%	74%

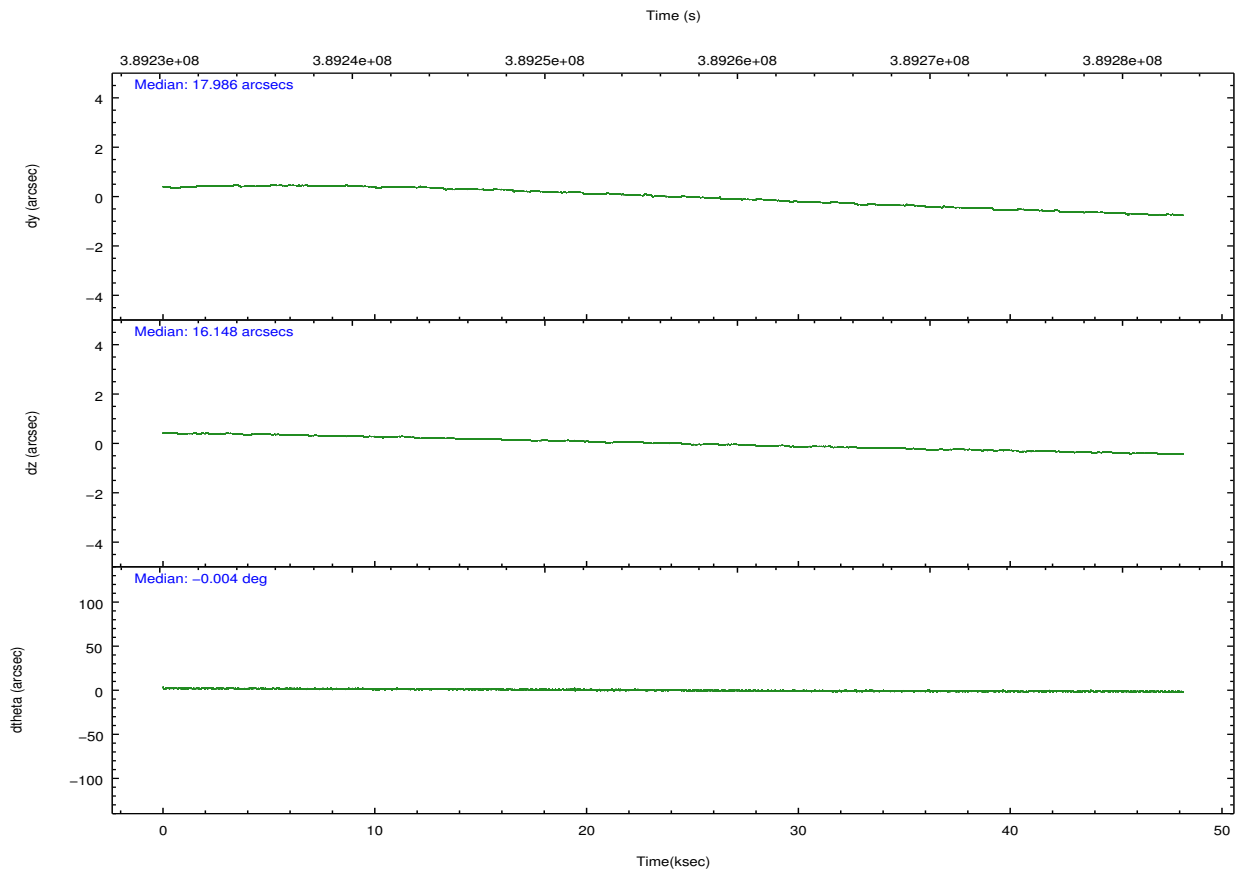
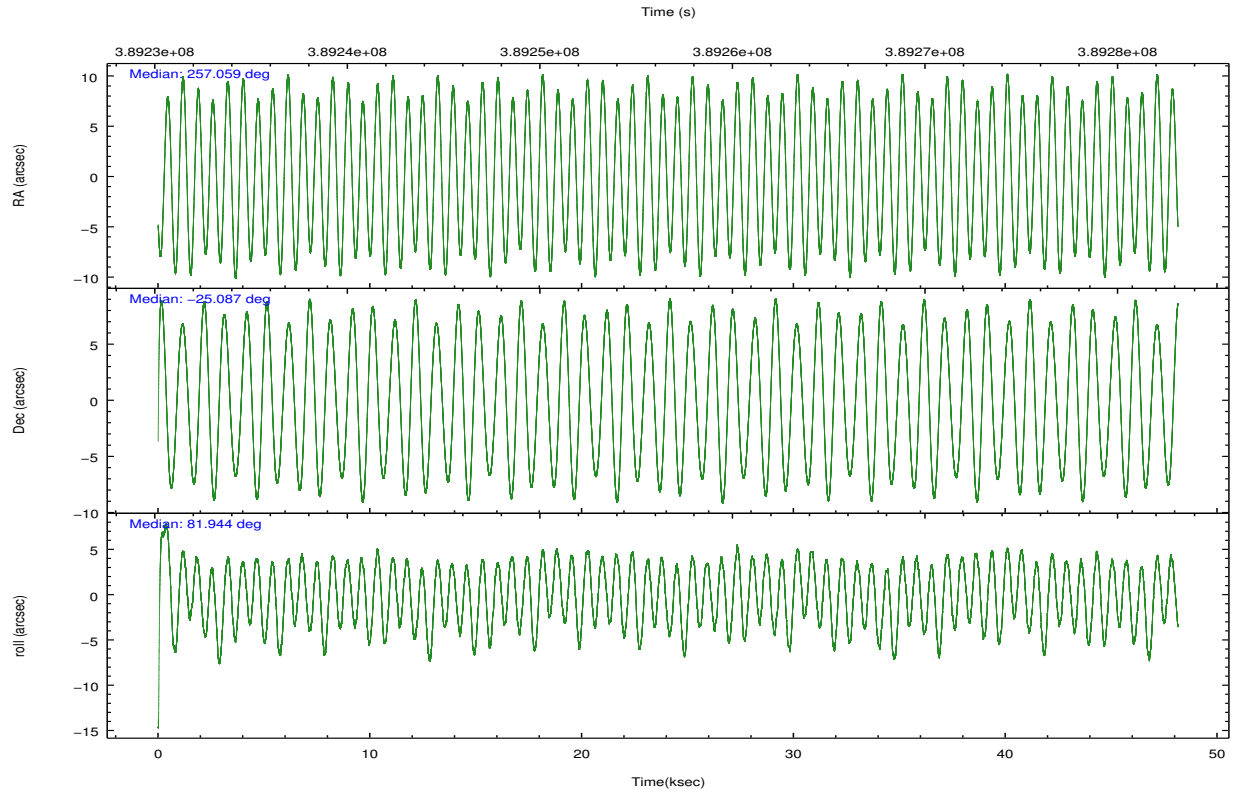
	ccd 5	ccd 6	ccd 7	ccd 8
grade 0 events	37522	16625	19237	39237
	6%	4%	4%	8%
grade 1 events	1293	207	551	371
	0%	0%	0%	0%
grade 2 events	83907	9518	42114	29773
	14%	2%	9%	6%
grade 3 events	11199	4569	18386	13177
	1%	1%	4%	2%
grade 4 events	10714	4343	18040	12496
	1%	1%	4%	2%
grade 5 events	42798	16595	46671	24090
	7%	4%	10%	4%
grade 6 events	143731	8847	106902	33004
	25%	2%	23%	6%
grade 7 events	234944	317419	196995	331245
	41%	83%	43%	68%

2.2 Compared Parameters

Parameter	Planned	Actual	Parameter	Planned	Actual
Instrument	ACIS	ACIS	Obspar format version number	7	7
Detector	ACIS-5678	ACIS-5678	Obspar file type	PREDICTED	ACTUAL
Grating	NONE	NONE	Obspar update status	NONE	UPDATED
Data mode	VFAINT	VFAINT	Number of optional ACIS chips dropped	0	0
Observation mode	POINTING	POINTING	On-chip summing requested	N	N
[deg] Pointing RA	257.070356	257.0586866930216	Subarray requested	NONE	NONE
[deg] Pointing Dec	-25.112159	-25.08694374299638	Alternating exposures requested	N	N
[deg] Pointing Roll	81.798647	81.95031768236551	[s] Primary exposure time	0.000000	3.1
[mm] SIM focus pos	-0.684267	-0.6828225247311905			
[mm] SIM defocus	0	0.001444936568705701			
[mm] SIM translation stage pos	-190.132523	-190.1400660498719			
[mm] SIM translation stage offset	0	0.00754346686406393			
[s] Observation start time (MET)	389232732.184000	389231009.77128			
Observation start date	2010-05-03T00:11:06	2010-05-02T23:43:29			
[s] Observation end time (MET)	389280732.184000	389281607.87385			
Observation end date	2010-05-03T13:31:06	2010-05-03T13:46:47			
Read mode	TIMED	TIMED			

2.3 Aspect





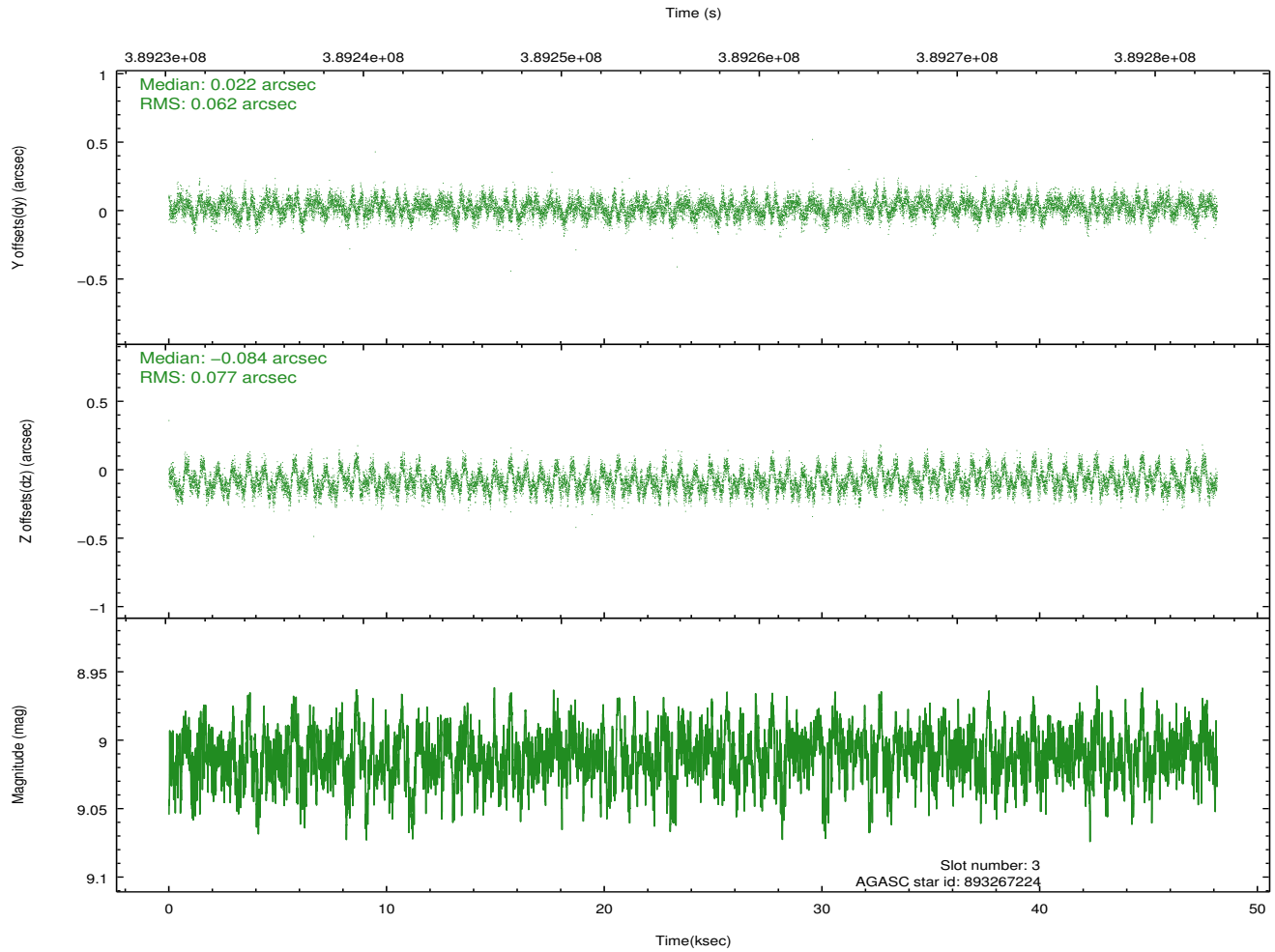
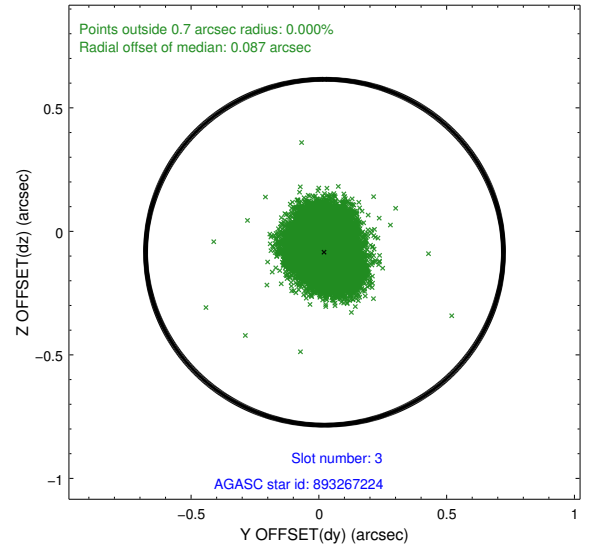
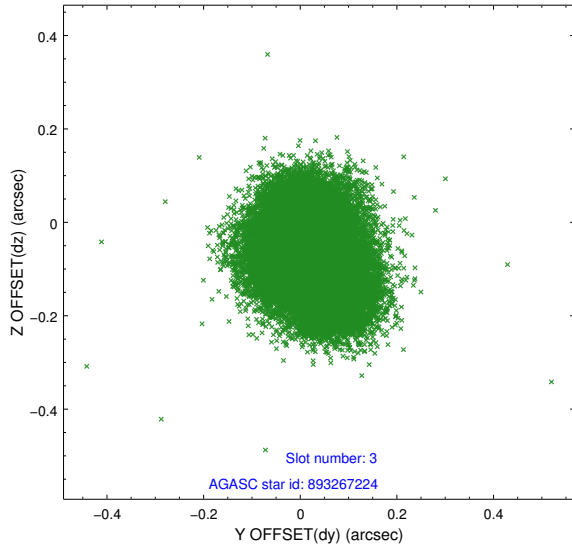
Slot Statistics

slot	status	id	mag	n_pts	med_dy	med_dz	dr1	dr2	ra	dec	mean_y	mean_z
0	FID	ACIS-S-2	6.92	11743	-0.085	-0.023	0.009	0.014	0.000000	0.000000	-771.07	-1737.58
1	FID	ACIS-S-4	7.00	11744	0.223	0.047	0.014	0.021	0.000000	0.000000	2142.52	170.99
2	FID	ACIS-S-5	7.03	11742	-0.168	-0.016	0.019	0.028	0.000000	0.000000	-1824.02	164.57
3	GUIDE	893267224	9.01	23461	0.022	-0.084	0.107	0.167	256.719517	-24.559792	1802.95	1420.74
4	GUIDE	893284504	6.90	23487	-0.093	-0.237	0.061	0.103	256.984181	-24.998135	366.25	336.81
5	GUIDE	893286696	8.41	23481	-0.073	-0.112	0.067	0.111	256.671020	-25.204941	-518.05	1239.47
6	GUIDE	893293176	7.49	23482	0.111	0.207	0.066	0.105	257.403734	-25.541568	-1376.50	-1292.32
7	GUIDE	893389816	8.46	23473	0.029	0.223	0.078	0.126	257.837184	-25.031634	636.62	-2434.89

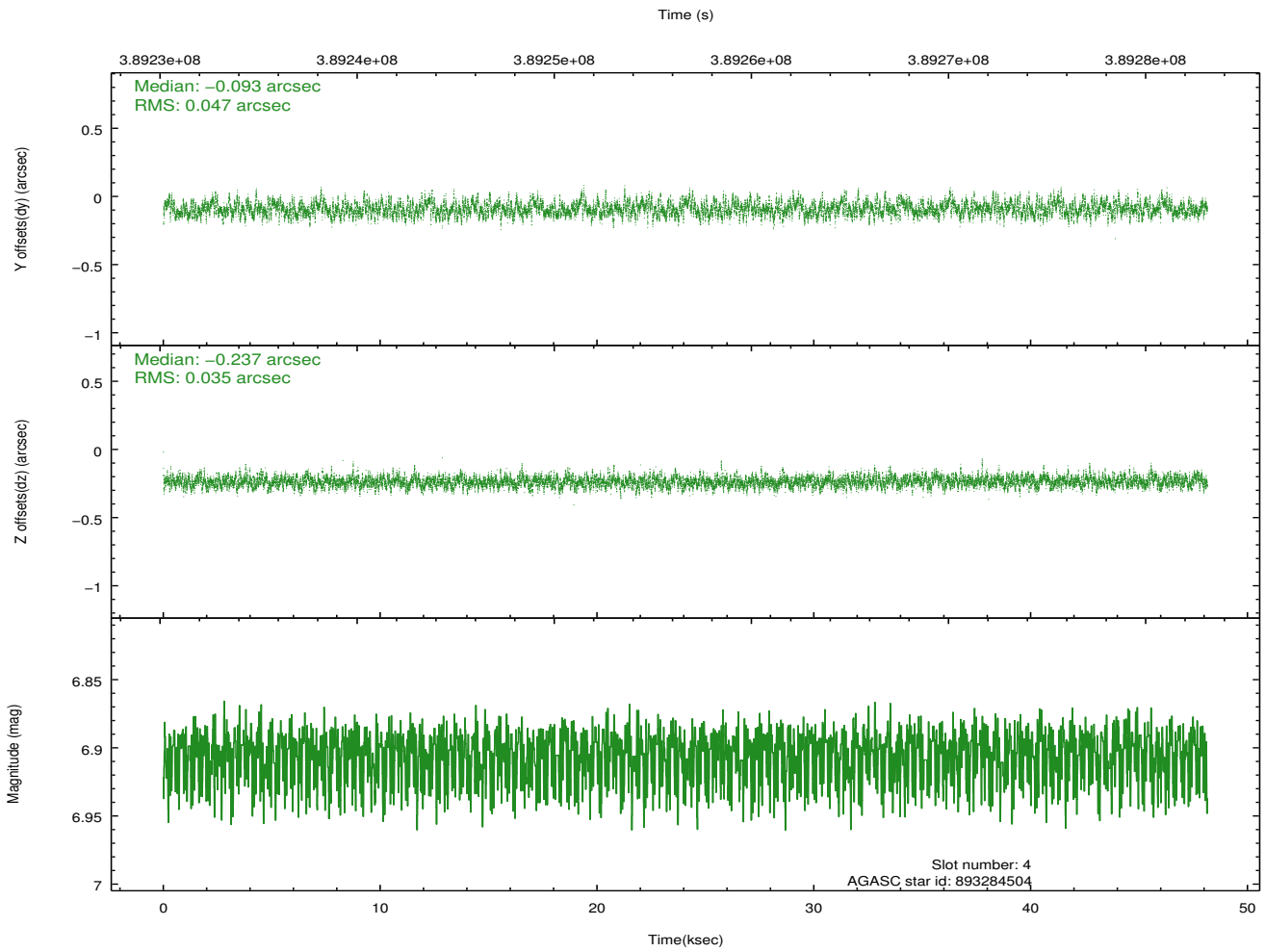
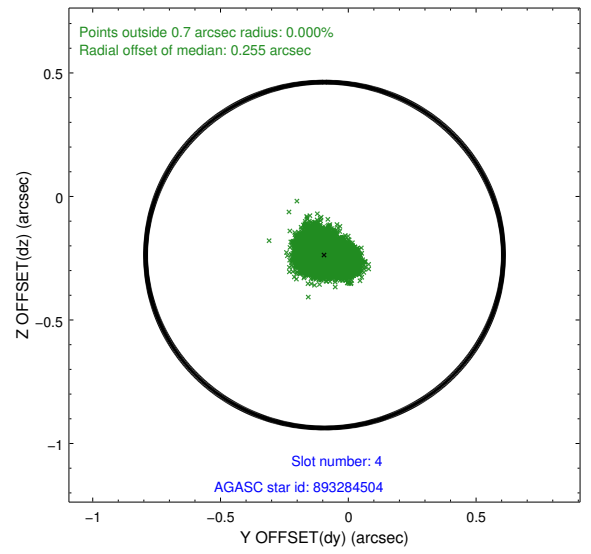
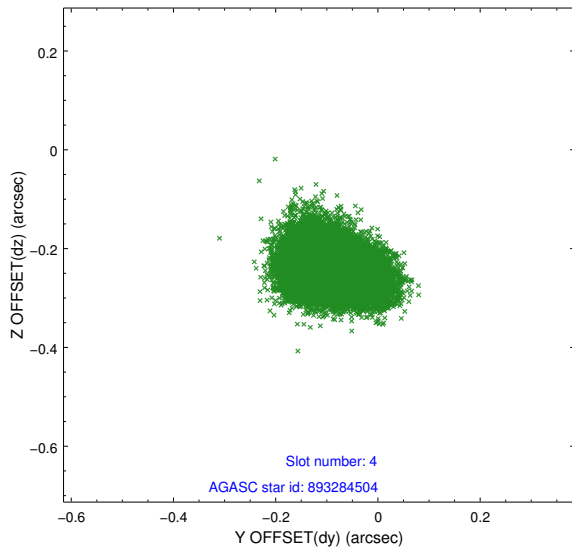
∞

2.4 Star Slots

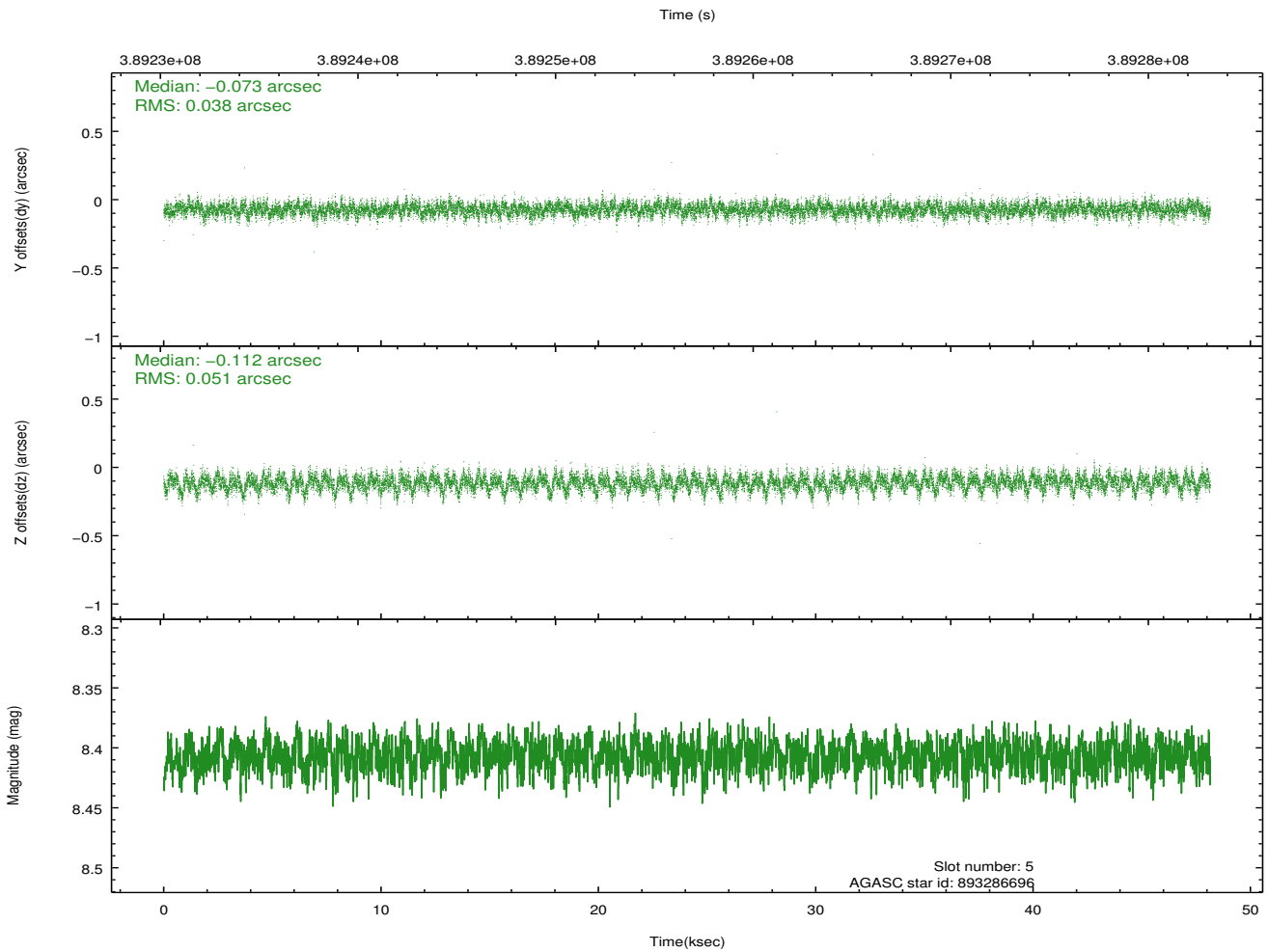
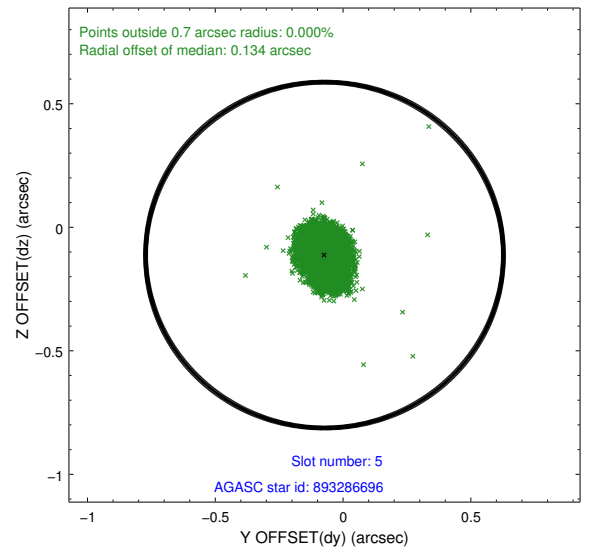
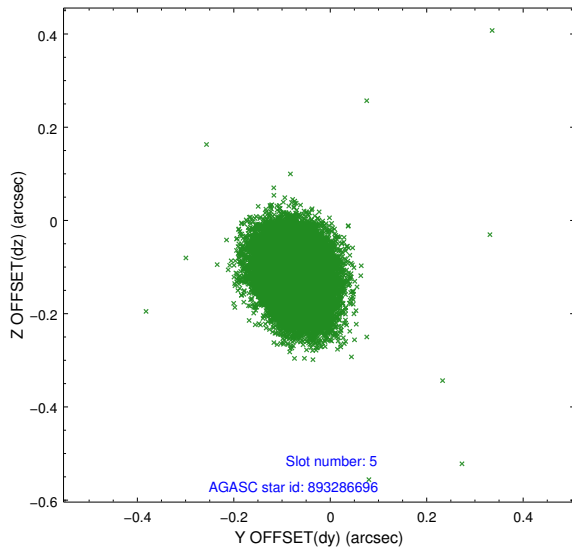
2.4.1 Slot 3



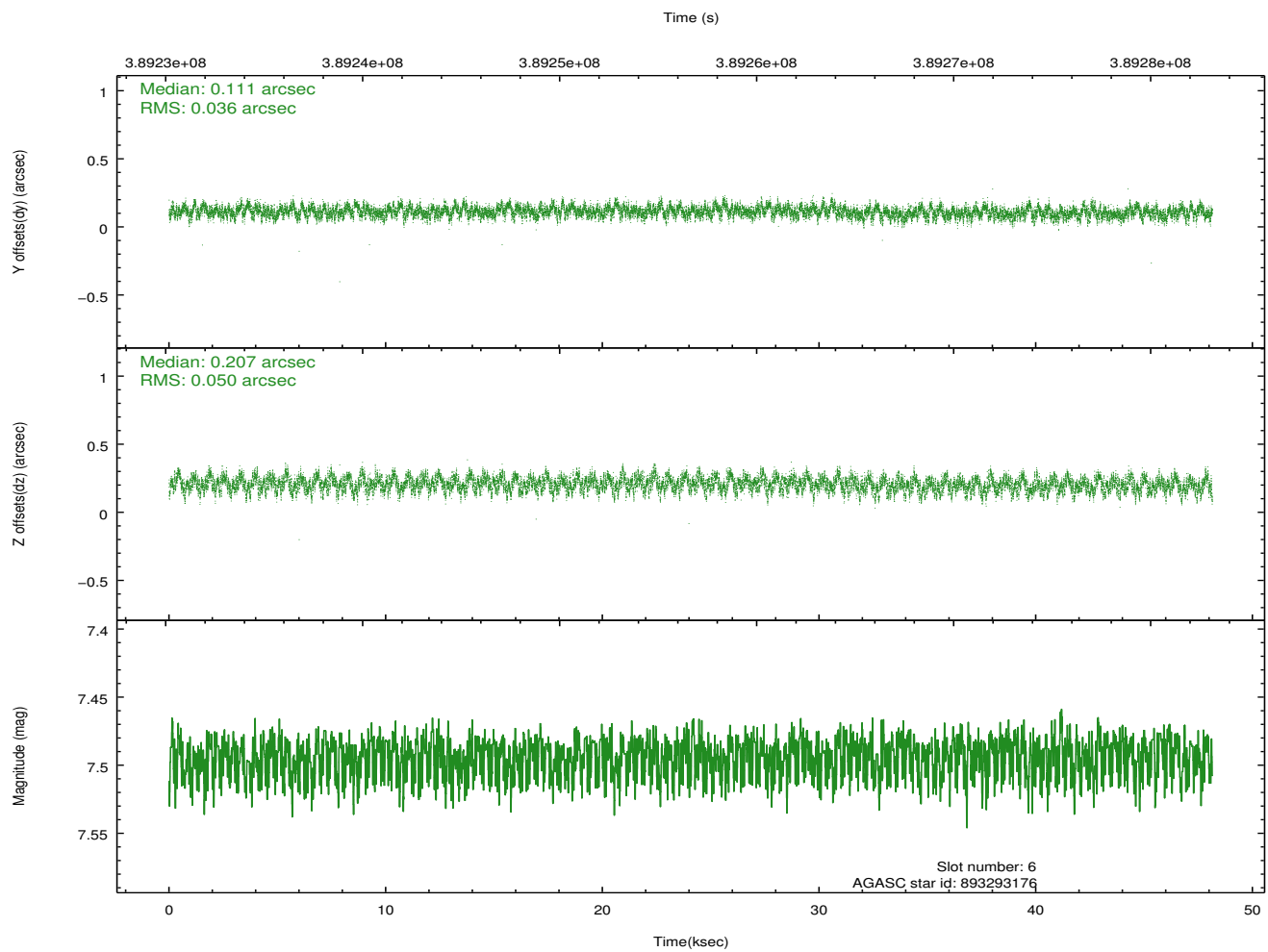
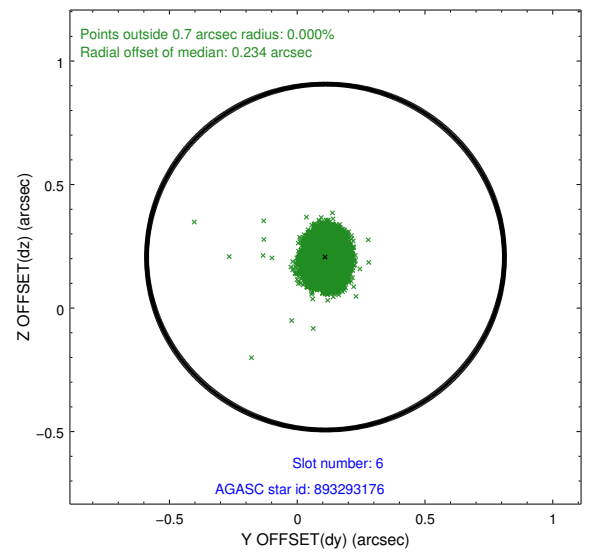
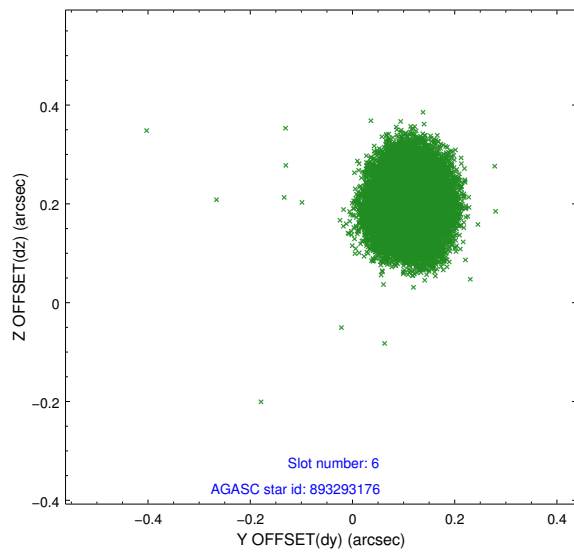
2.4.2 Slot 4



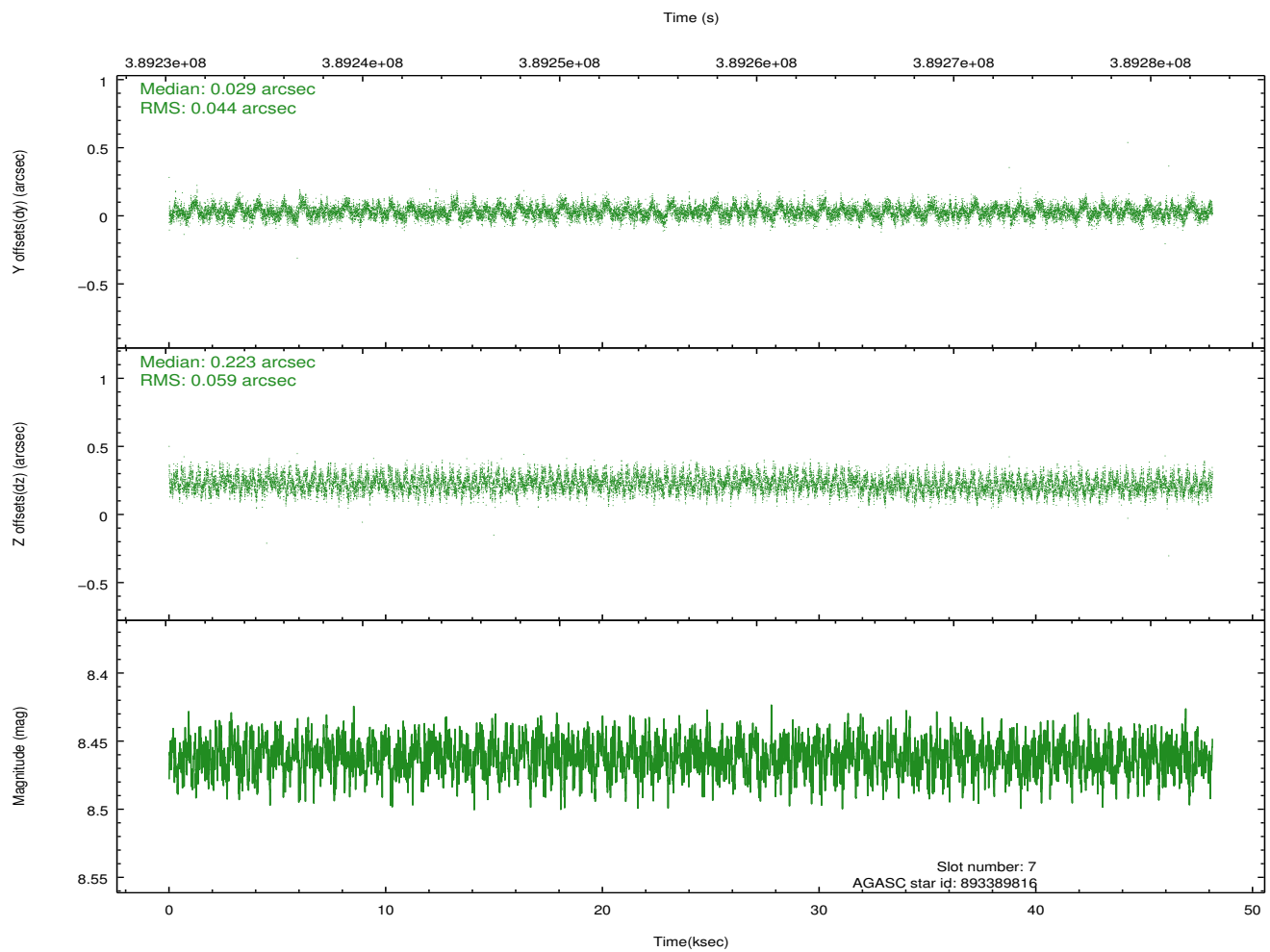
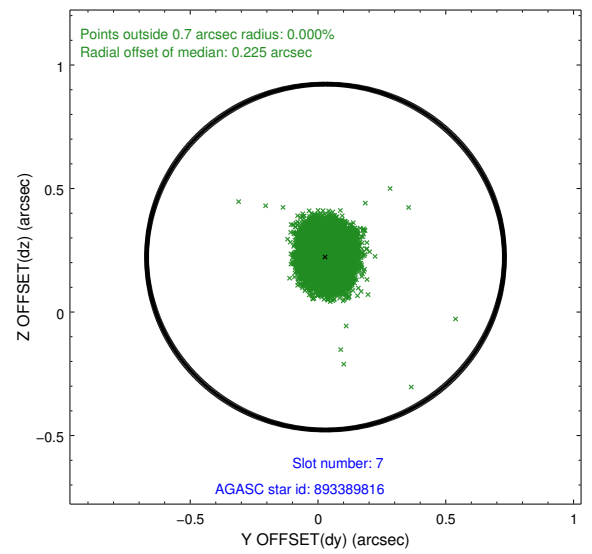
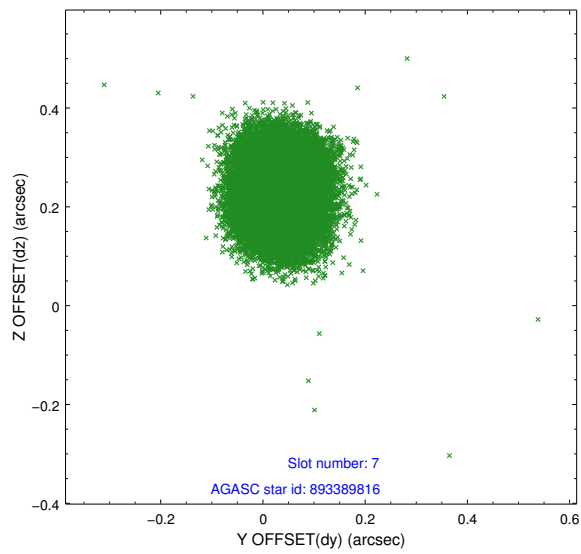
2.4.3 Slot 5



2.4.4 Slot 6

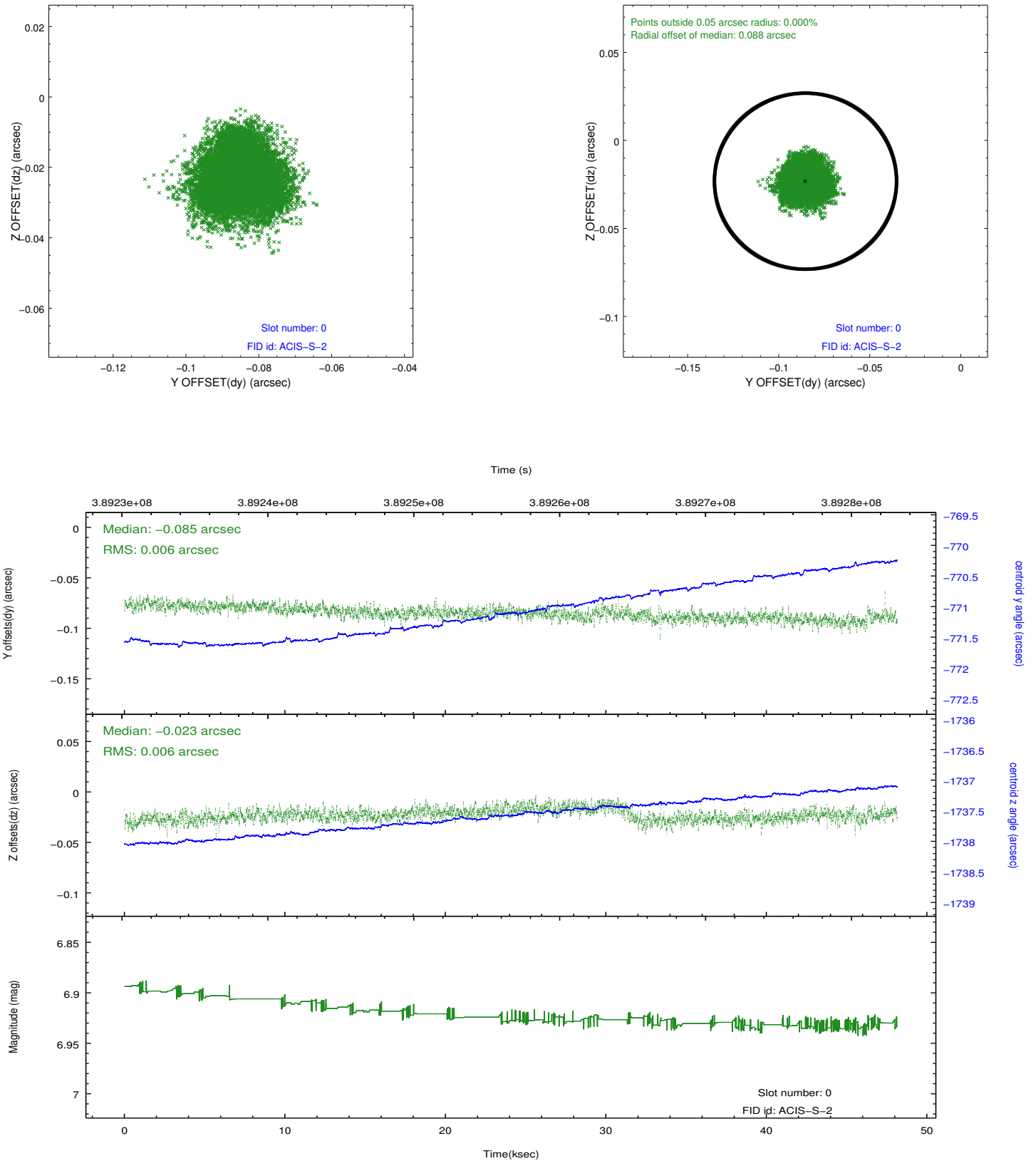


2.4.5 Slot 7

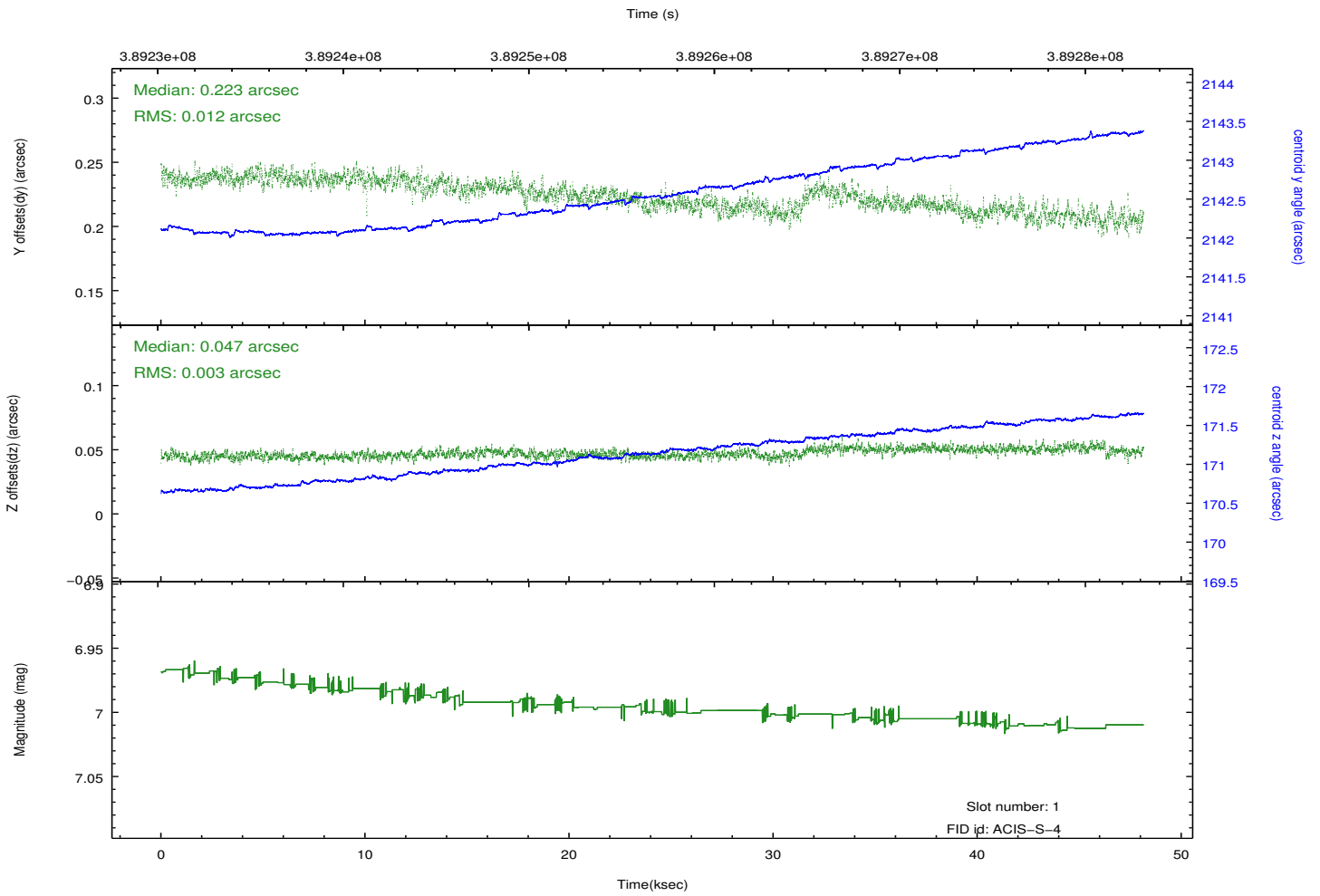
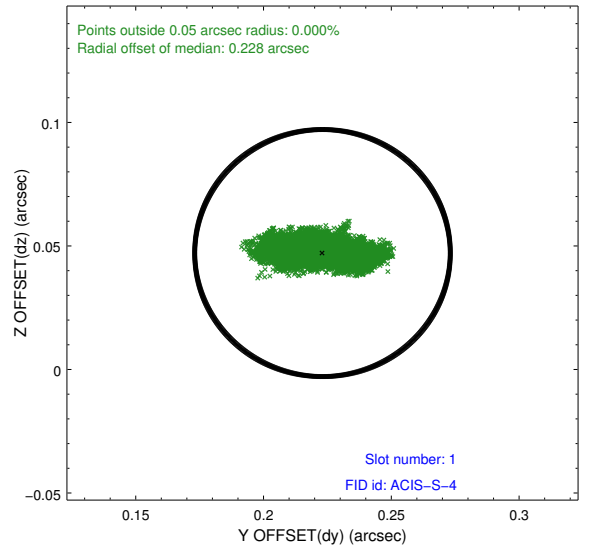
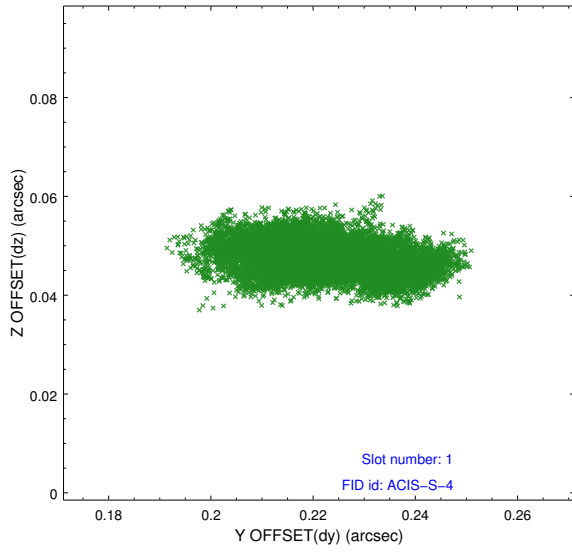


2.5 FID Slots

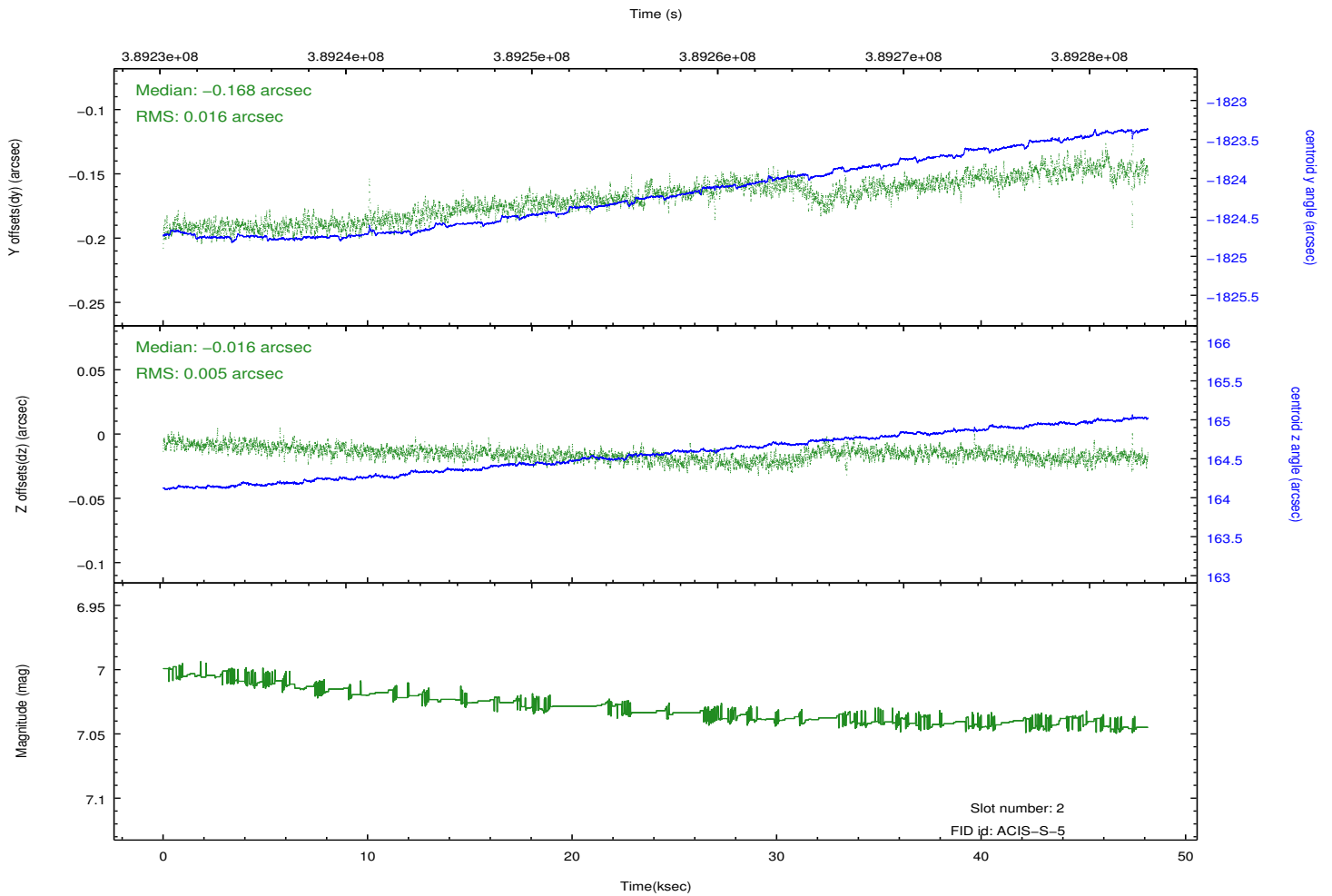
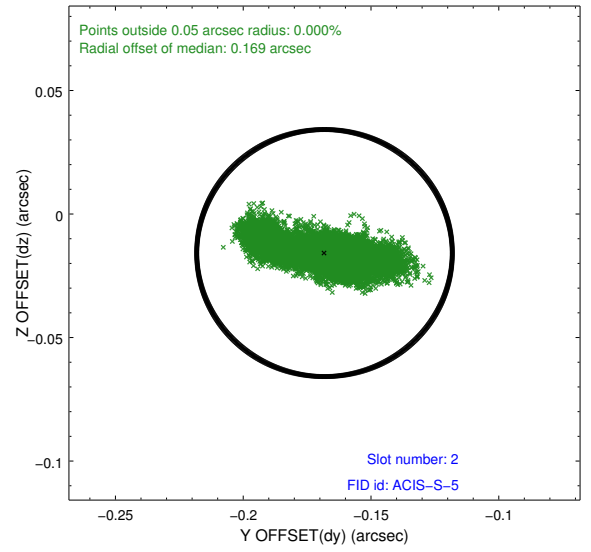
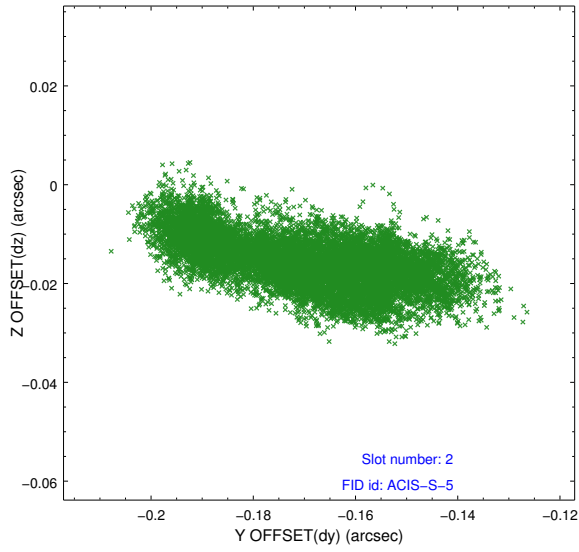
2.5.1 Slot 0



2.5.2 Slot 1



2.5.3 Slot 2



A Summary

A.1 Status

V&V Scientist	Jen Lauer
V&V Date (YYYY-MM-DD)	2012.07.02
V&V Edition	1
V&V Disposition and Status	OK
V&V Charge Time	48.1399003

A.2 Comments