

V&V Reference Report

L2 ASCDS Version : 8.4.5

Observation 11251 - L2 Version 2
Chandra X-Ray Center

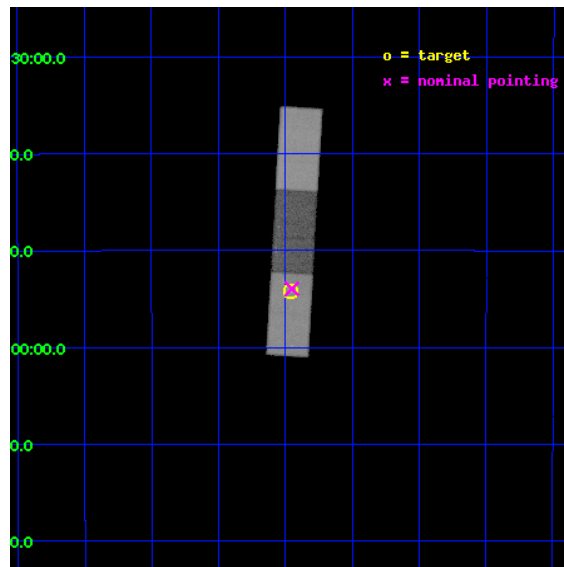
L2 Processing Date : Jun 26 2012

Contents

1	Front	2
2	OBI	3
2.1	OBI	3
2.1.1	Images	3
2.1.2	Bias	3
2.1.3	Parameters	4
2.1.4	Events	4
2.2	Compared Parameters	5
2.3	Aspect	6
2.4	Star Slots	9
2.4.1	Slot 3	9
2.4.2	Slot 4	10
2.4.3	Slot 5	11
2.4.4	Slot 6	12
2.4.5	Slot 7	13
2.5	FID Slots	14
2.5.1	Slot 0	14
2.5.2	Slot 1	15
2.5.3	Slot 2	16
A	Summary	17
A.1	Status	17
A.2	Comments	17

1 Front

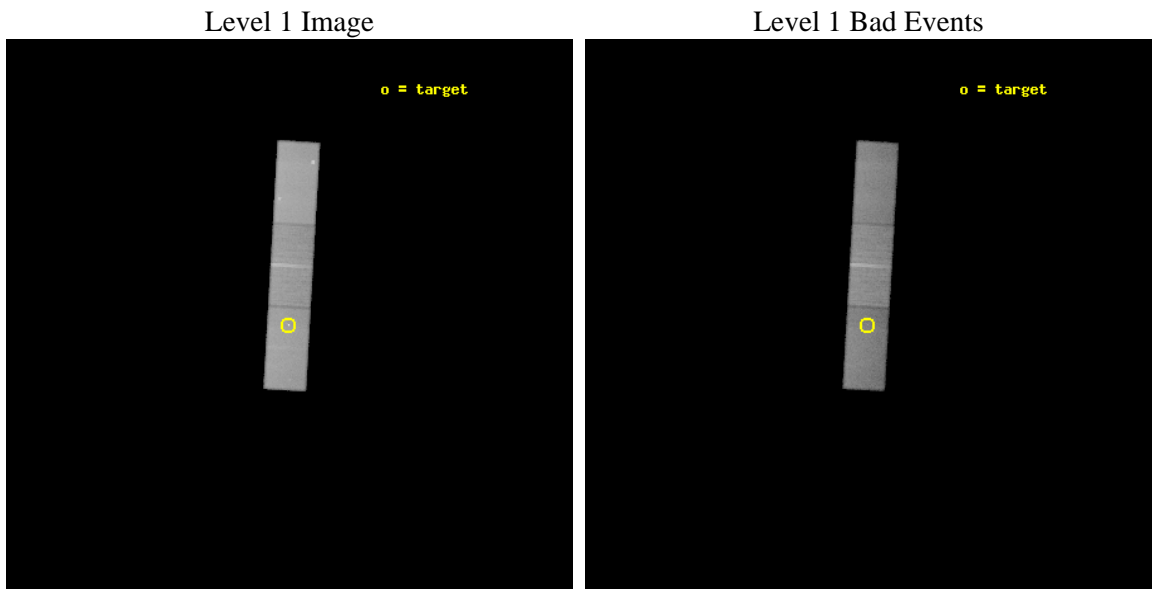
seq_num	501336	Sequence number
obs_id	11251	Observation id
title	Constraining the Distance & Temperature of LAT PSR J1742-20, The Newly Discovered Nearby Middle-Aged Neutron Star	Proposal title
observer	Prof. Gregory Sivakoff	Principal investigator
object	LAT PSR J1742-20	Source name
dtcycle	0	
cycle	P	events from which exps? Prim/Second/Both
ra_targ	265.490833	Observer's specified target RA [deg]
dec_targ	-20.903306	Observer's specified target Dec [deg]
ra_nom	265.48785773158	Nominal RA [deg]
dec_nom	-20.899327931191	Nominal Dec [deg]
roll_nom	93.272531587054	Nominal Roll [deg]
revision	2	Processing version of data
ontime	50035.029163599	Sum of GTIs [s]
livetime	48783.726576902	Livetime [s]
ontime5	50034.988123596	Sum of GTIs [s]
ontime6	50033.306083322	Sum of GTIs [s]
ontime7	50035.029163599	Sum of GTIs [s]
l2events	273618	Number of level 2 events



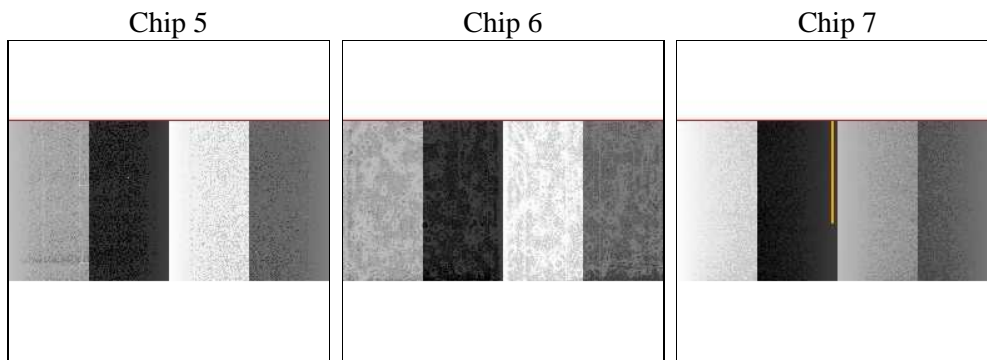
2 OBI

2.1 OBI

2.1.1 Images



2.1.2 Bias



2.1.3 Parameters

obi_num	0	Obi number	sched_exp_time	50000.000000	[s] Scheduled observation exposure time
ascdsver	8.4.5	Processing system revision	ontime	50035.029163599	Sum of GTIs [s]
caldsver	4.4.10	 	ontime5	50034.988123596	Sum of GTIs [s]
date	2012-06-26T03:08:26	Date and time of file creation	ontime6	50033.306083322	Sum of GTIs [s]
revision	2	Processing version of data	ontime7	50035.029163599	Sum of GTIs [s]
			l1events	744905	Number of level 1 events

2.1.4 Events

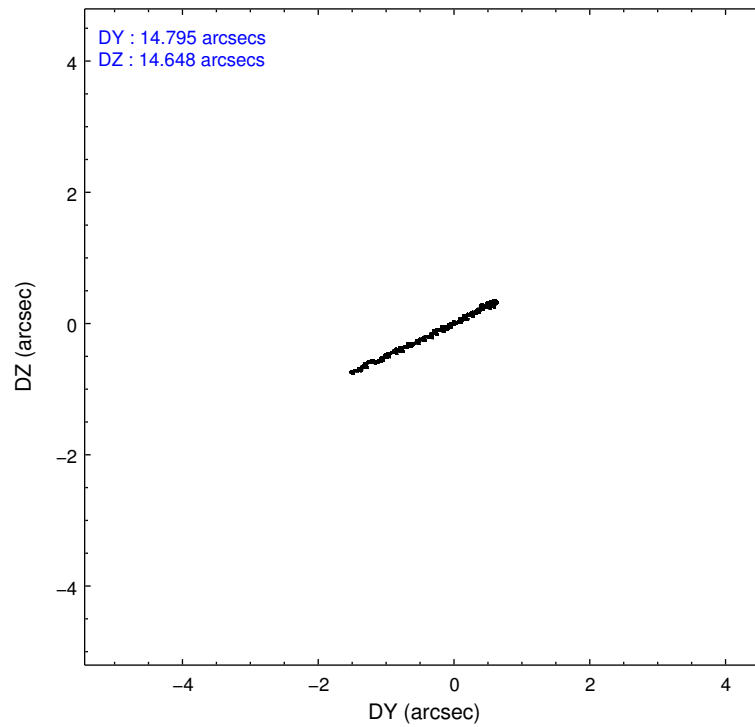
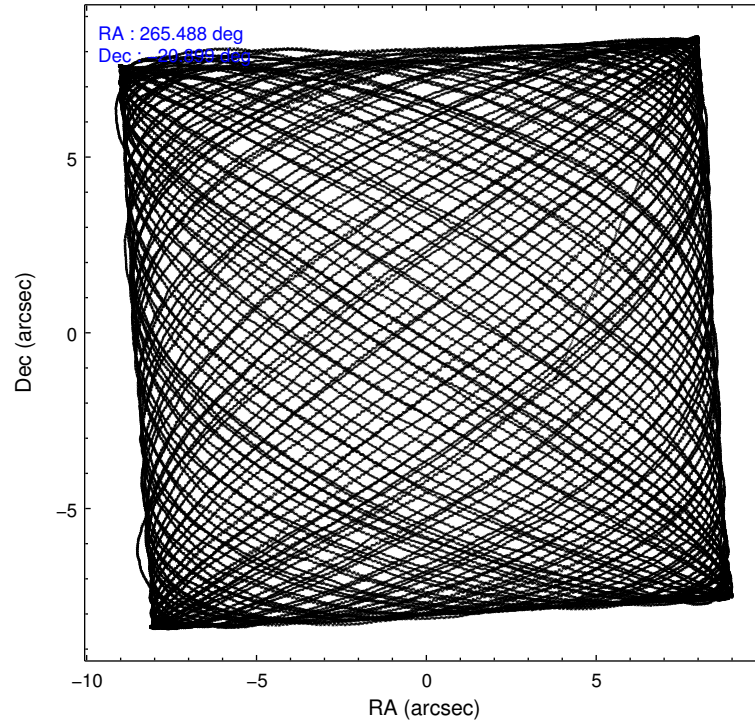
	ccd 5	ccd 6	ccd 7
level 1 events	291382	211519	242004
rejected events	145268	186664	124937
rejected %	49%	88%	51%

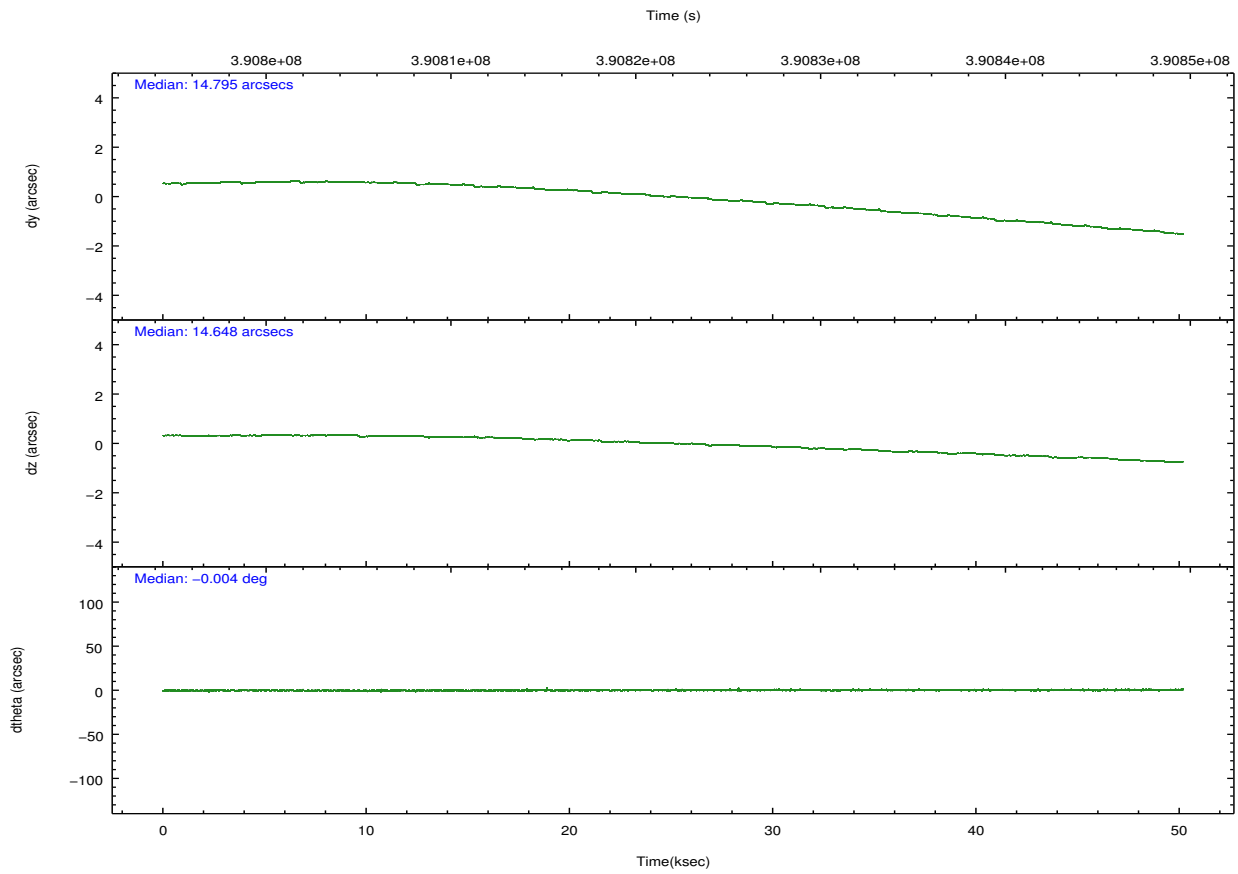
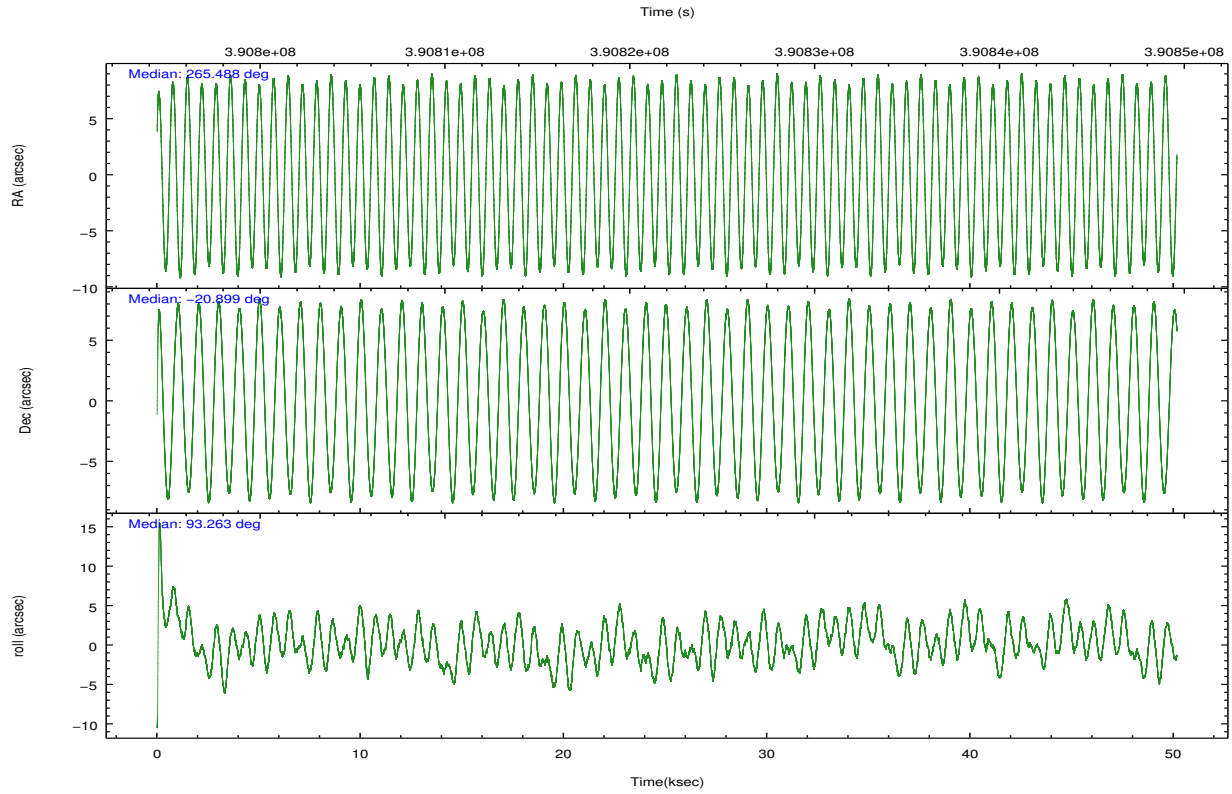
	ccd 5	ccd 6	ccd 7
grade 0 events	15061	8889	12849
	5%	4%	5%
grade 1 events	519	85	288
	0%	0%	0%
grade 2 events	42802	5004	24491
	14%	2%	10%
grade 3 events	7304	3061	11822
	2%	1%	4%
grade 4 events	7180	2926	11739
	2%	1%	4%
grade 5 events	24429	8774	25118
	8%	4%	10%
grade 6 events	73778	4976	56176
	25%	2%	23%
grade 7 events	120309	177804	99521
	41%	84%	41%

2.2 Compared Parameters

Parameter	Planned	Actual	Parameter	Planned	Actual
Instrument	ACIS	ACIS	Obspar format version number	7	7
Detector	ACIS-567	ACIS-567	Obspar file type	PREDICTED	ACTUAL
Grating	NONE	NONE	Obspar update status	NONE	UPDATED
Data mode	VFAINT	VFAINT	CCD I0 on	N	N
Observation mode	POINTING	POINTING	CCD I1 on	N	N
[deg] Pointing RA	265.504250	265.4878577315779	CCD I2 on	N	N
[deg] Pointing Dec	-20.921983	-20.89932793119075	CCD I3 on	N	N
[deg] Pointing Roll	93.121755	93.27253158705415	CCD S0 on	N	N
[mm] SIM focus pos	-0.684267	-0.6828225247311905	CCD S1 on	O2	Y
[mm] SIM defocus	0	0.001444936568705701	CCD S2 on	O1	Y
[mm] SIM translation stage pos	-190.132523	-190.1400660498719	CCD S3 on	Y	Y
[mm] SIM translation stage offset	0	0.00754346686406393	CCD S4 on	N	N
[s] Observation start time (MET)	390797113.184000	390795903.4884	CCD S5 on	N	N
Observation start date	2010-05-21T02:44:07	2010-05-21T02:25:03	Number of optional ACIS chips dropped	0	0
[s] Observation end time (MET)	390847113.184000	390848100.07856	On-chip summing requested	N	N
Observation end date	2010-05-21T16:37:27	2010-05-21T16:55:00	Subarray requested	CUSTOM	1/2
Read mode	TIMED	TIMED	Subarray start row	257	257
			Subarray row count	512	512
			Alternating exposures requested	N	N
			[s] Primary exposure time	0.000000	1.6

2.3 Aspect



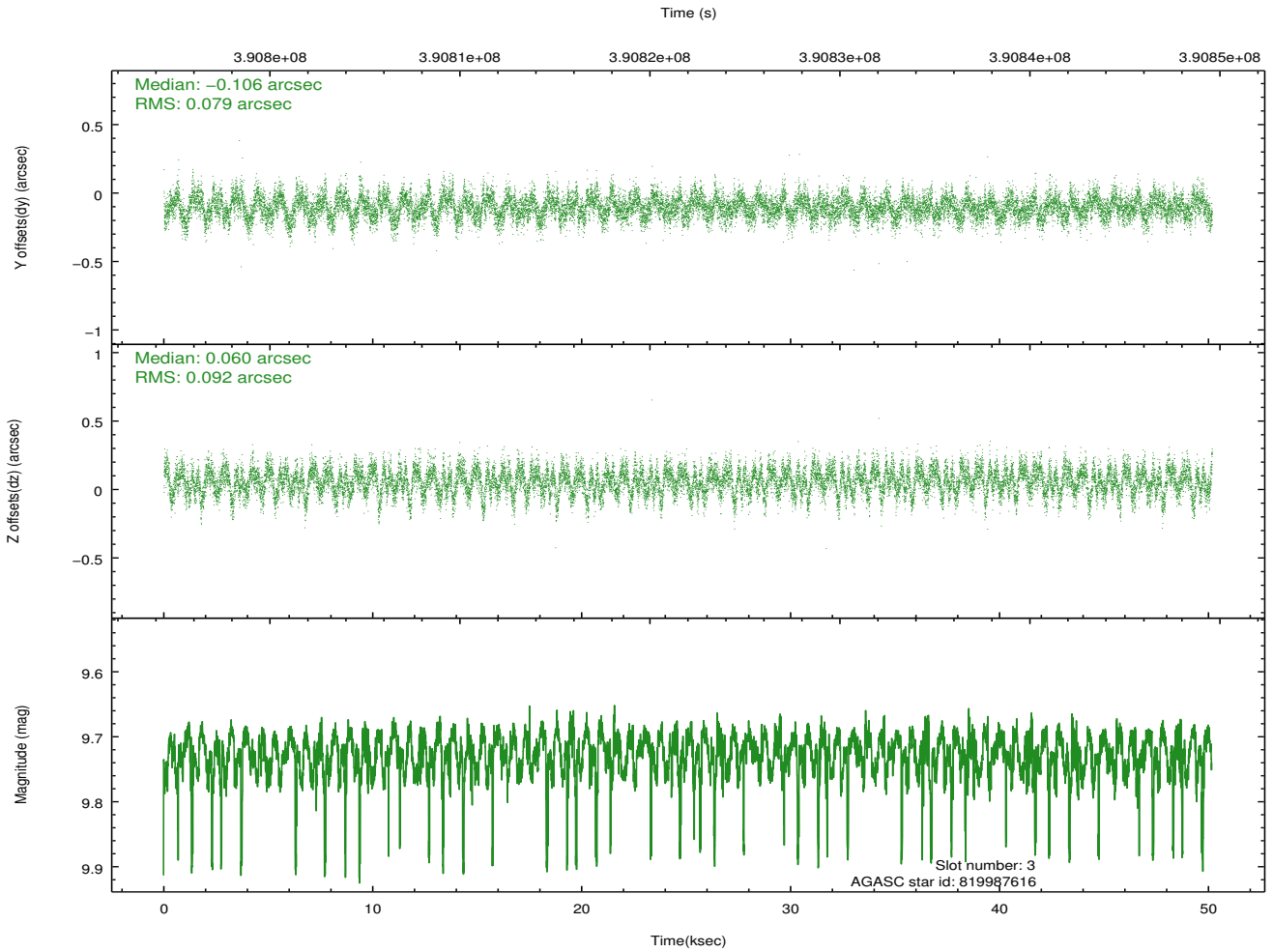
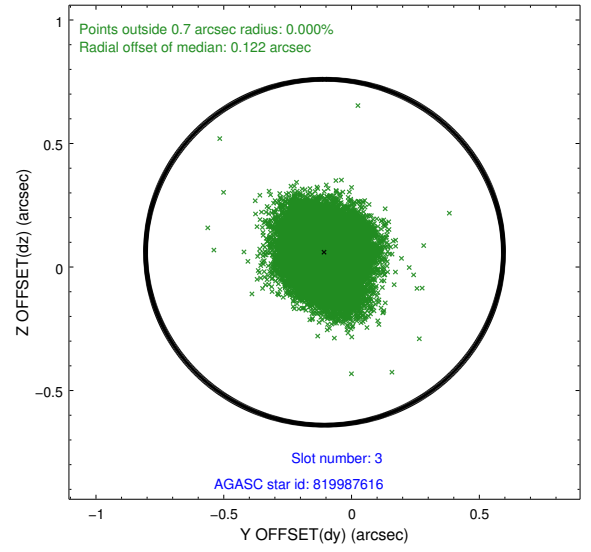
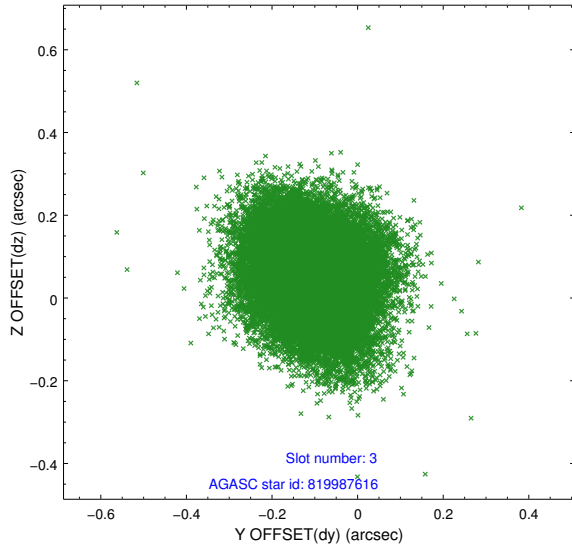


Slot Statistics

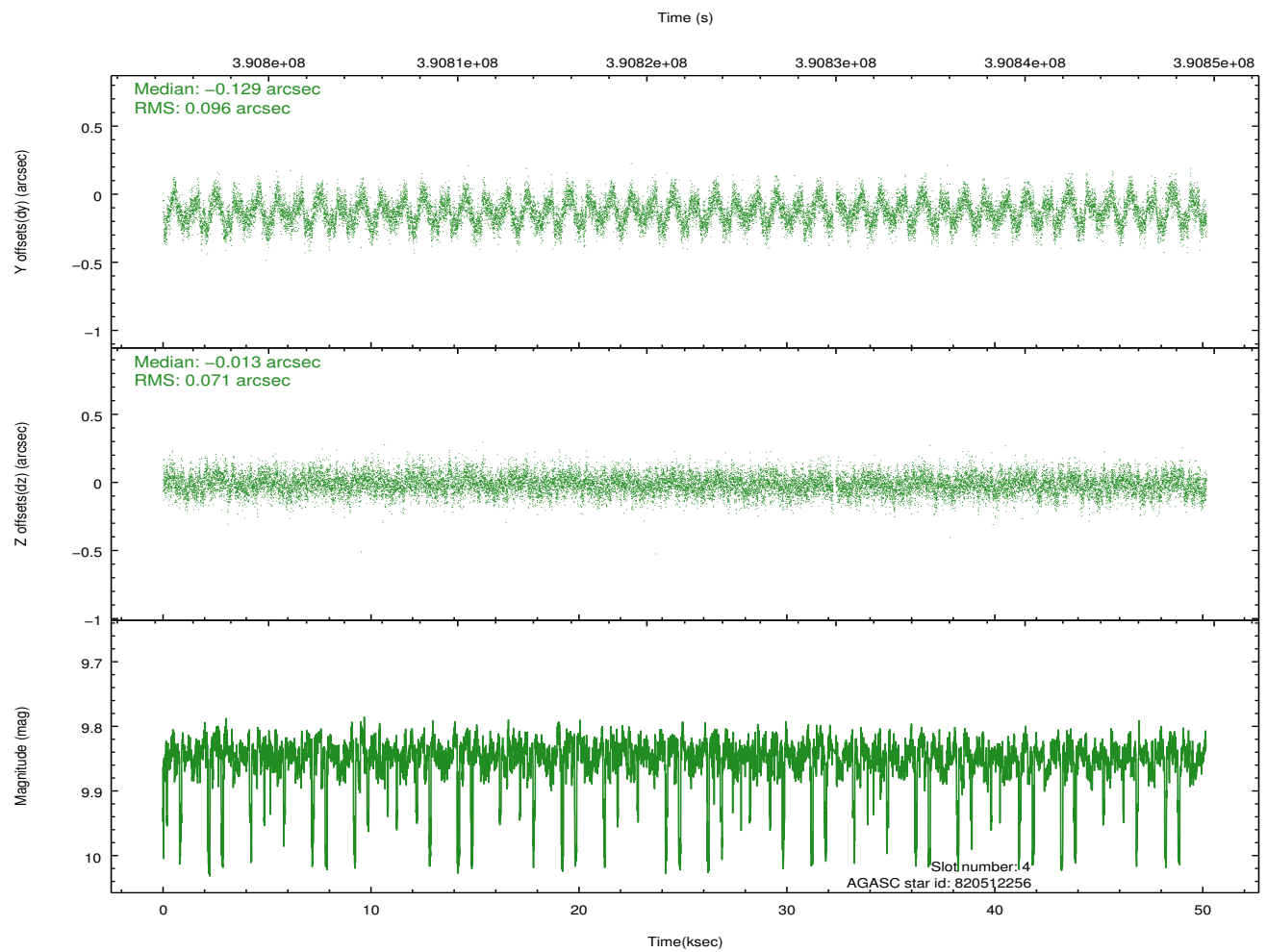
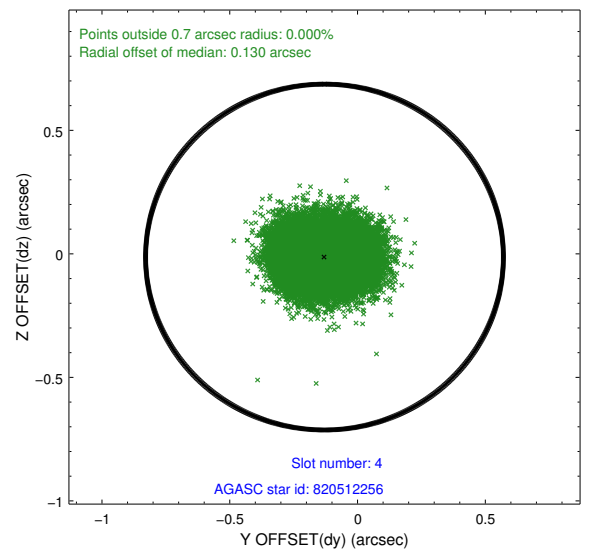
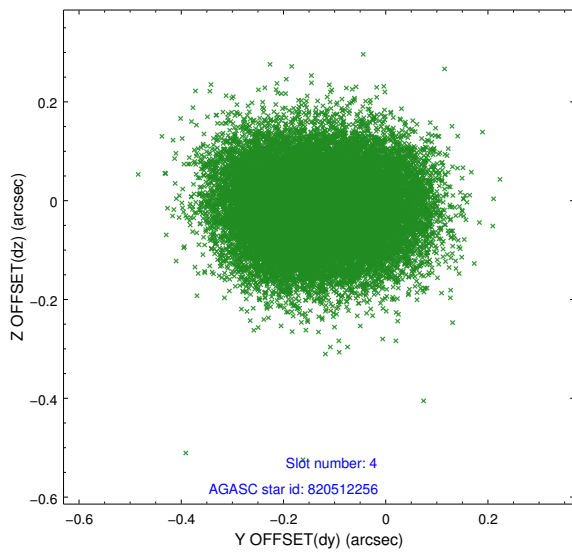
slot	status	id	mag	n_pts	med_dy	med_dz	dr1	dr2	ra	dec	mean_y	mean_z
0	FID	ACIS-S-2	6.97	12237	-0.099	-0.055	0.026	0.051	0.000000	0.000000	-767.69	-1736.01
1	FID	ACIS-S-4	7.05	12236	0.210	0.059	0.019	0.029	0.000000	0.000000	2145.89	172.61
2	FID	ACIS-S-5	7.08	12237	-0.163	0.002	0.037	0.046	0.000000	0.000000	-1820.63	166.19
3	GUIDE	819987616	9.73	24303	-0.106	0.060	0.129	0.207	265.870829	-20.584257	1145.73	-1299.22
4	GUIDE	820512256	9.85	24274	-0.129	-0.013	0.129	0.205	265.674779	-20.869391	157.62	-582.63
5	GUIDE	820519896	9.43	24331	0.227	0.218	0.132	0.195	265.946936	-21.404468	-1816.51	-1386.69
6	GUIDE	820522872	8.96	24453	-0.073	-0.080	0.102	0.161	265.213313	-20.864339	259.60	966.19
7	GUIDE	820523264	8.54	24459	0.075	-0.182	0.081	0.127	264.873719	-21.486241	-1917.55	2219.81

2.4 Star Slots

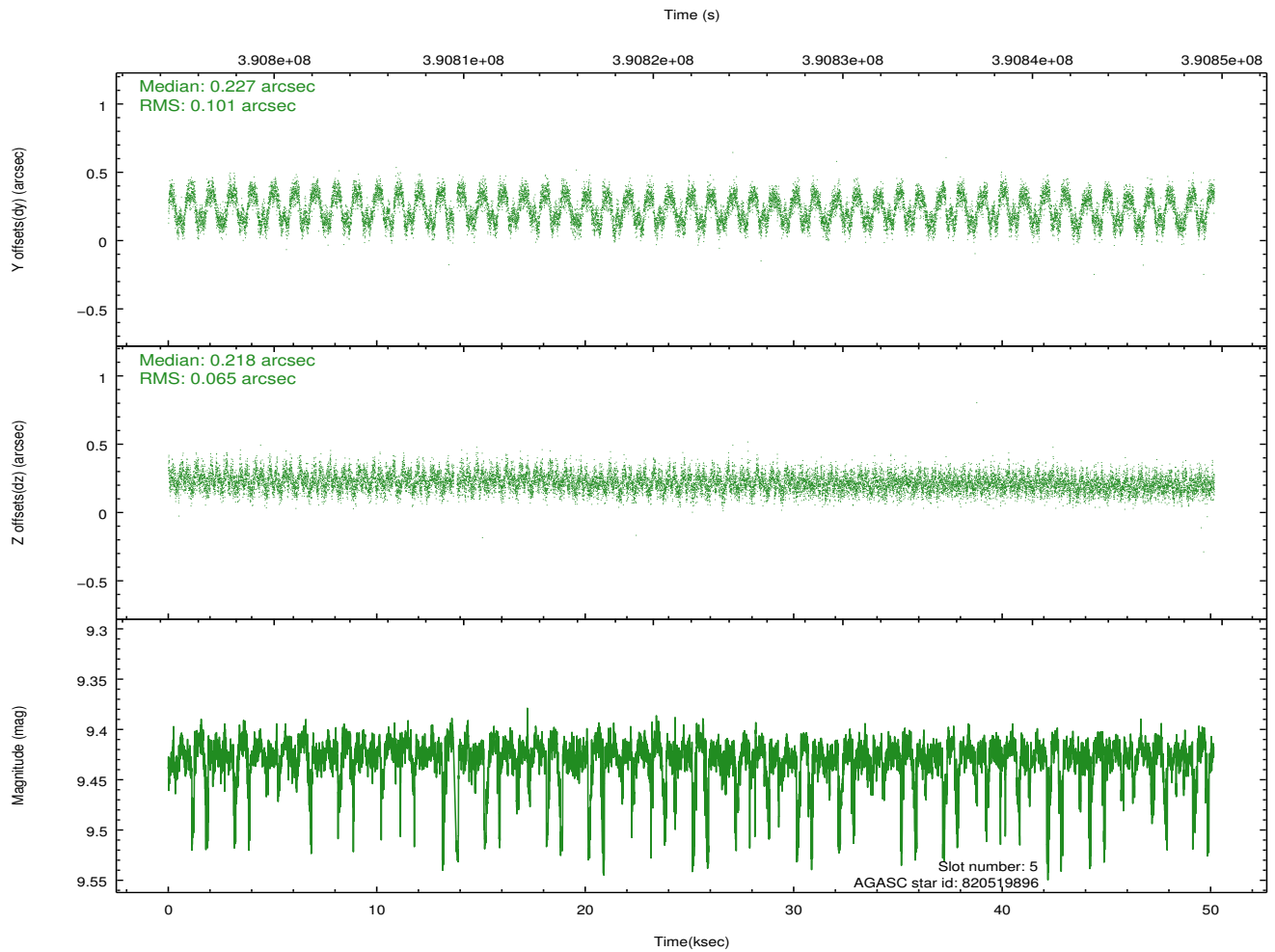
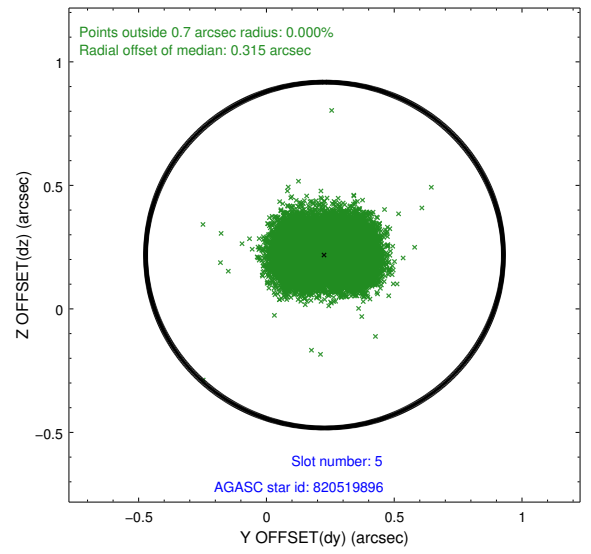
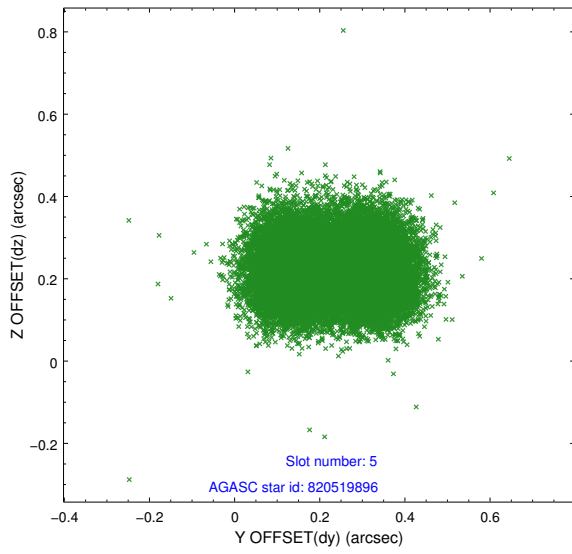
2.4.1 Slot 3



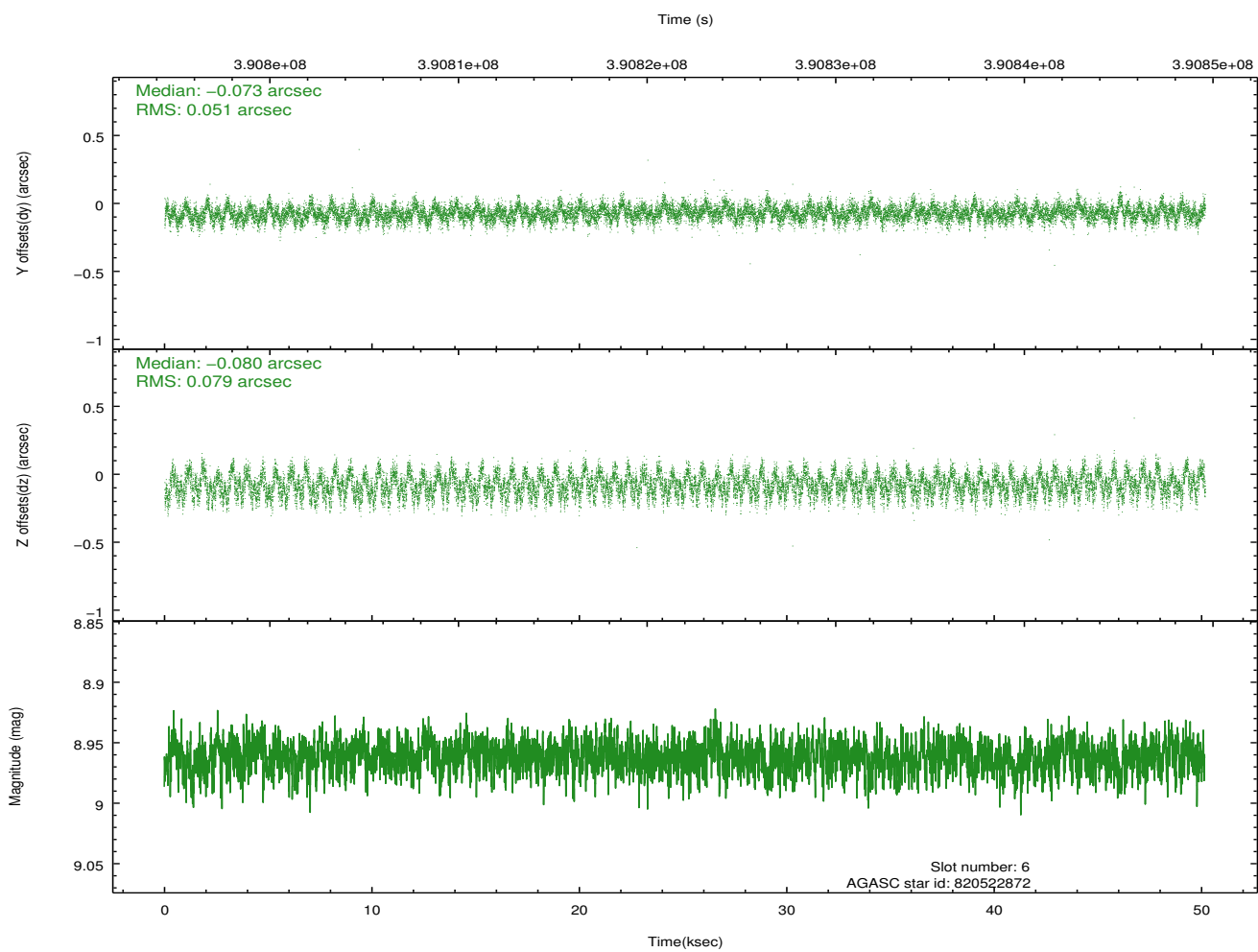
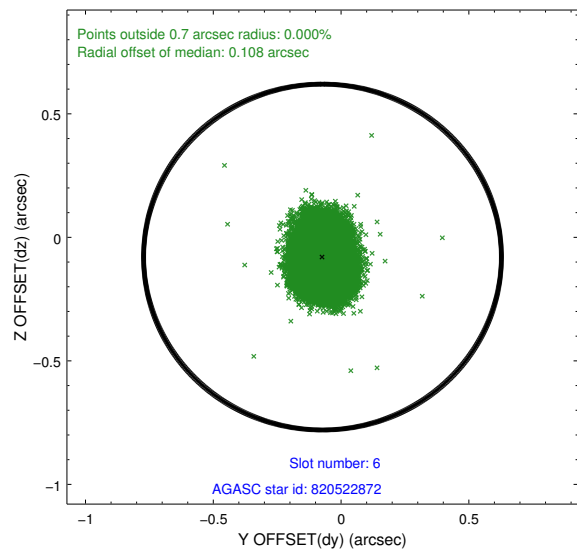
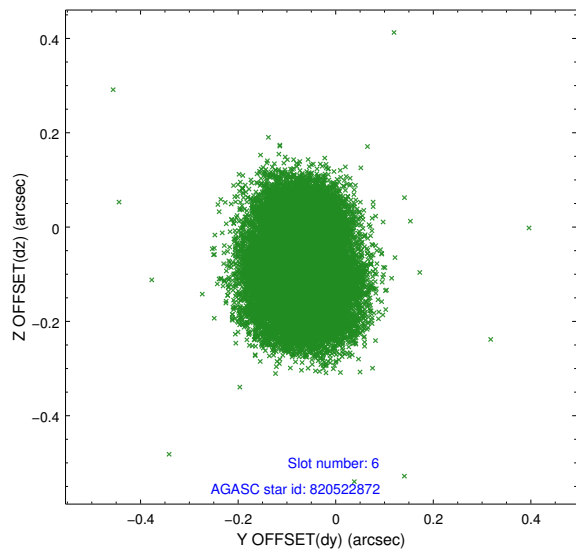
2.4.2 Slot 4



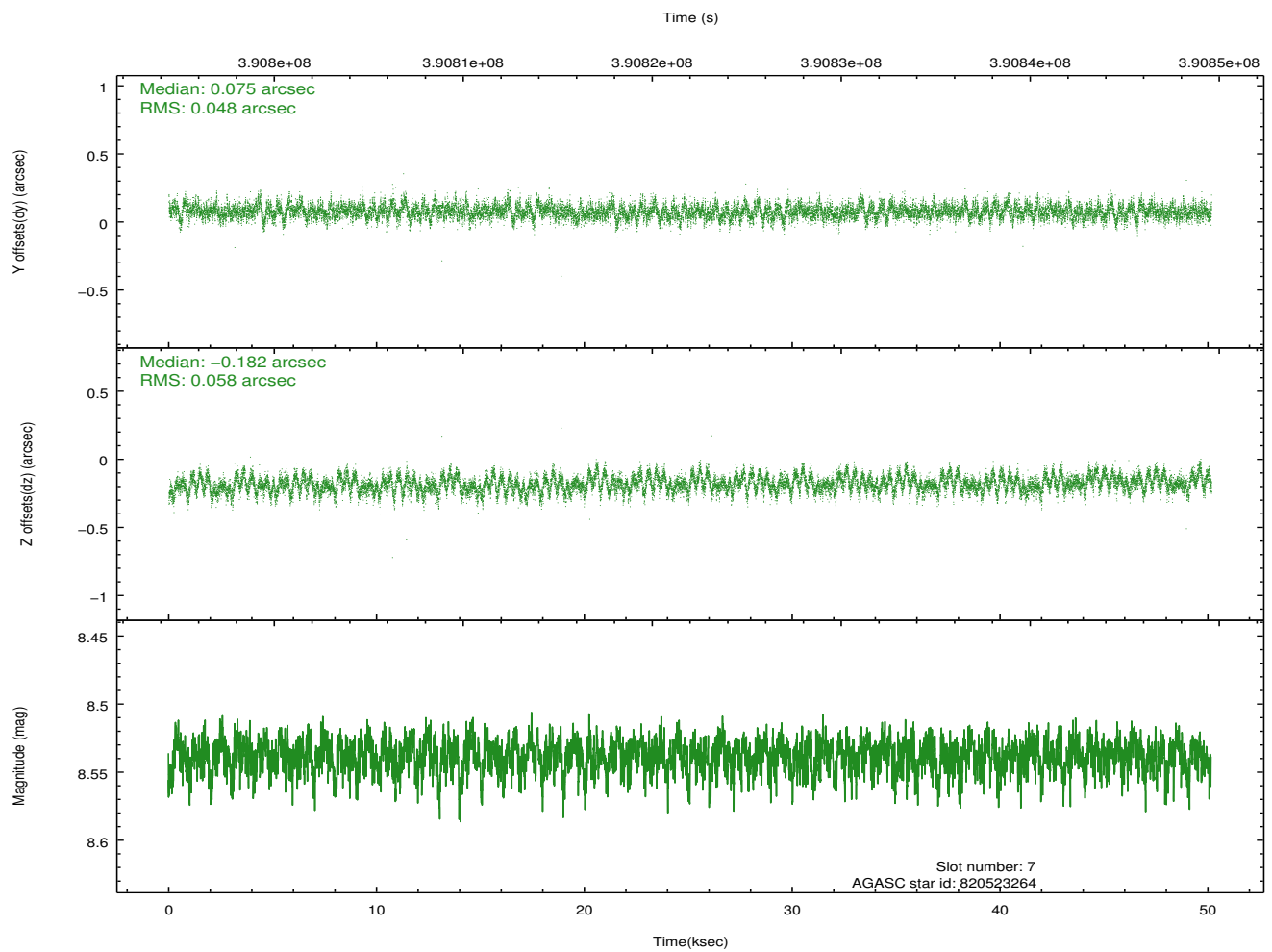
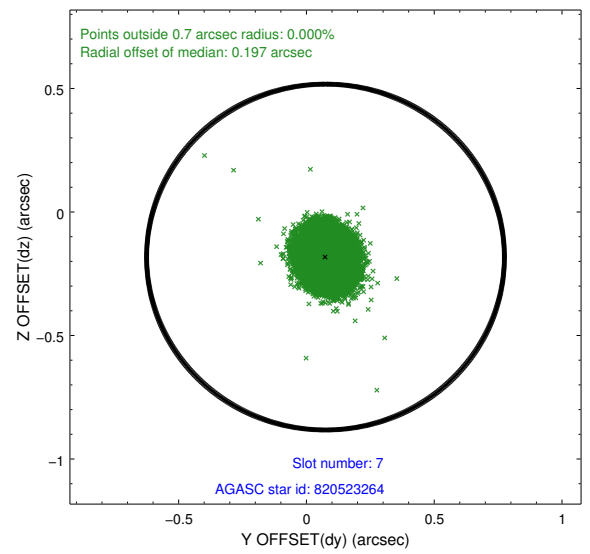
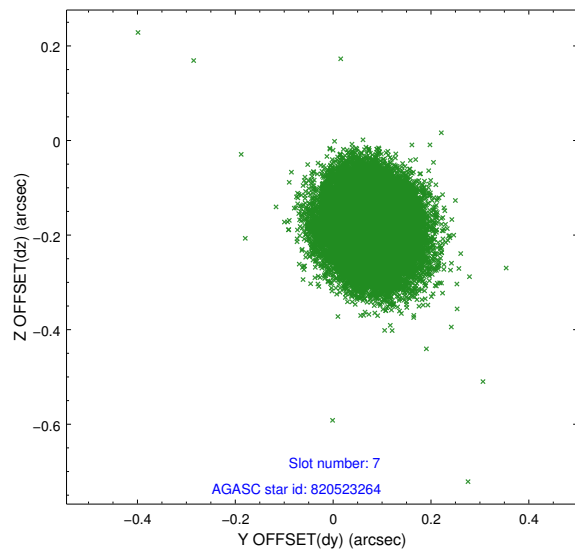
2.4.3 Slot 5



2.4.4 Slot 6

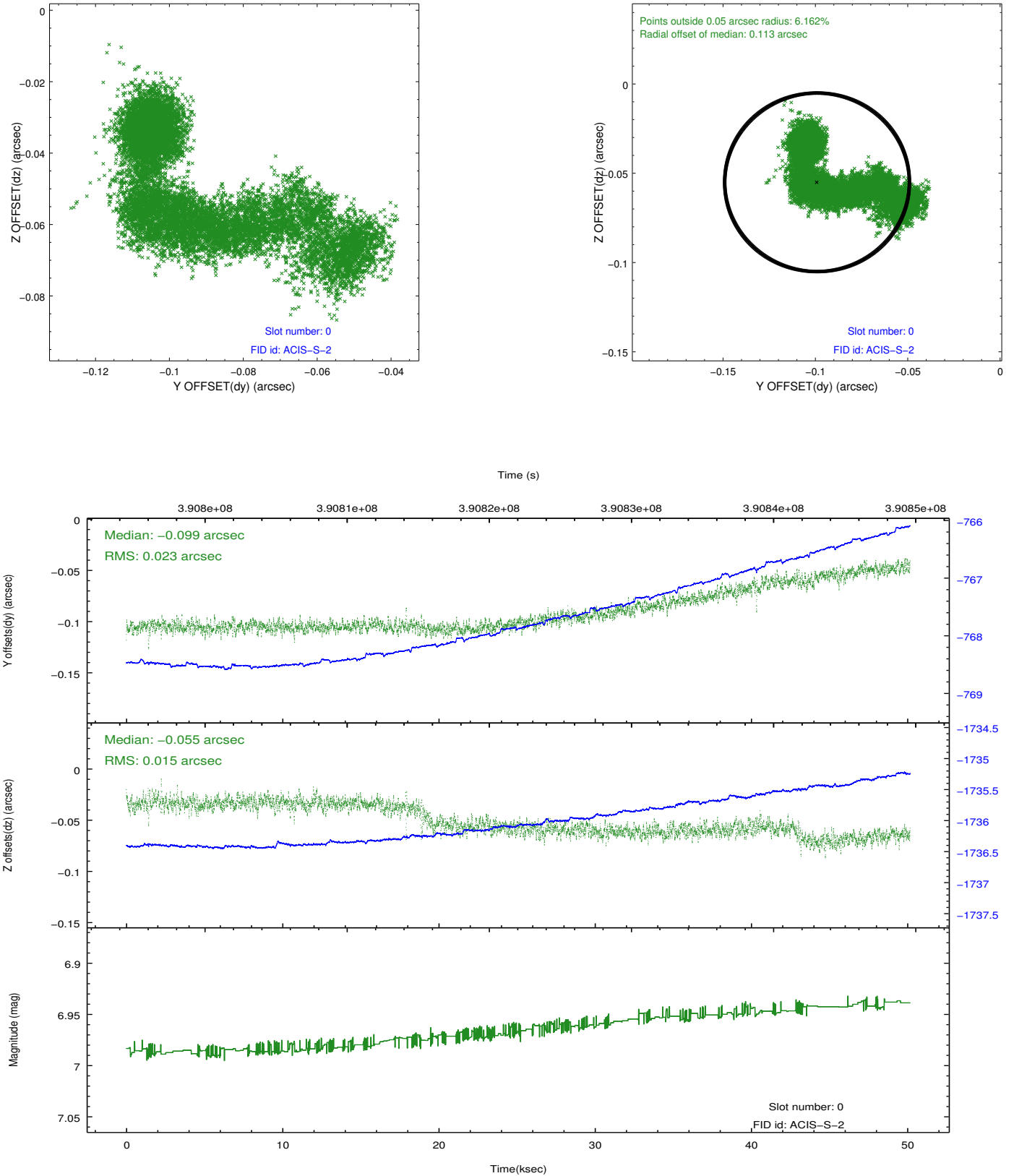


2.4.5 Slot 7

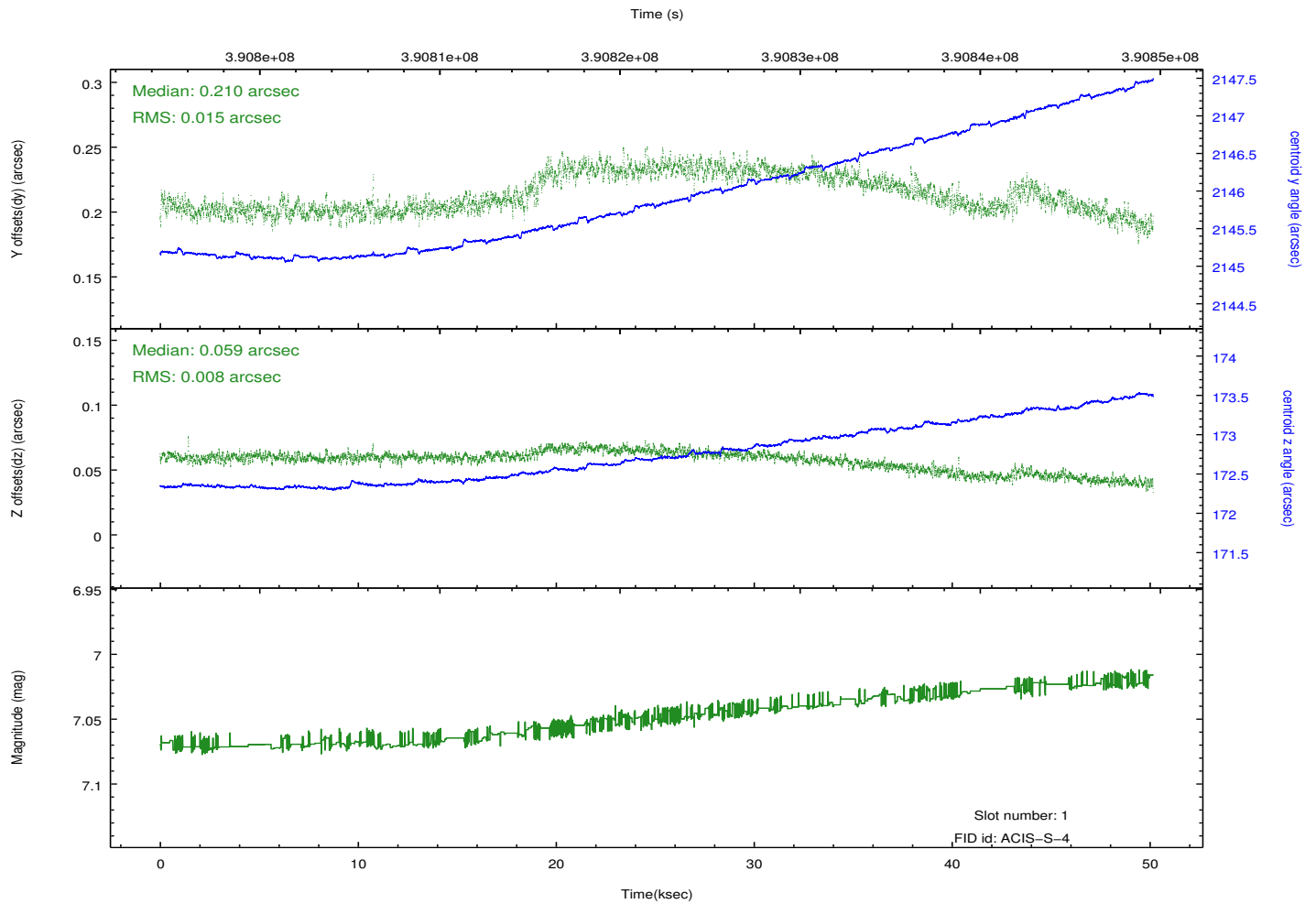
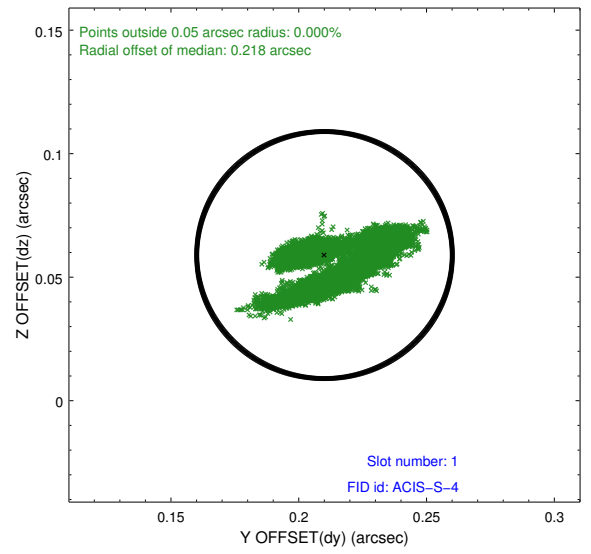
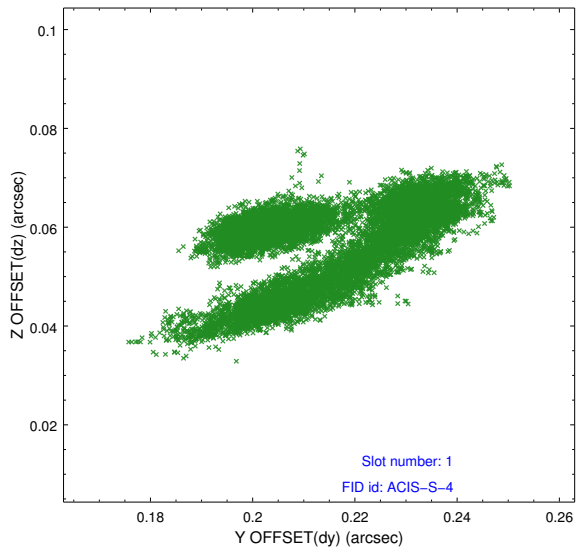


2.5 FID Slots

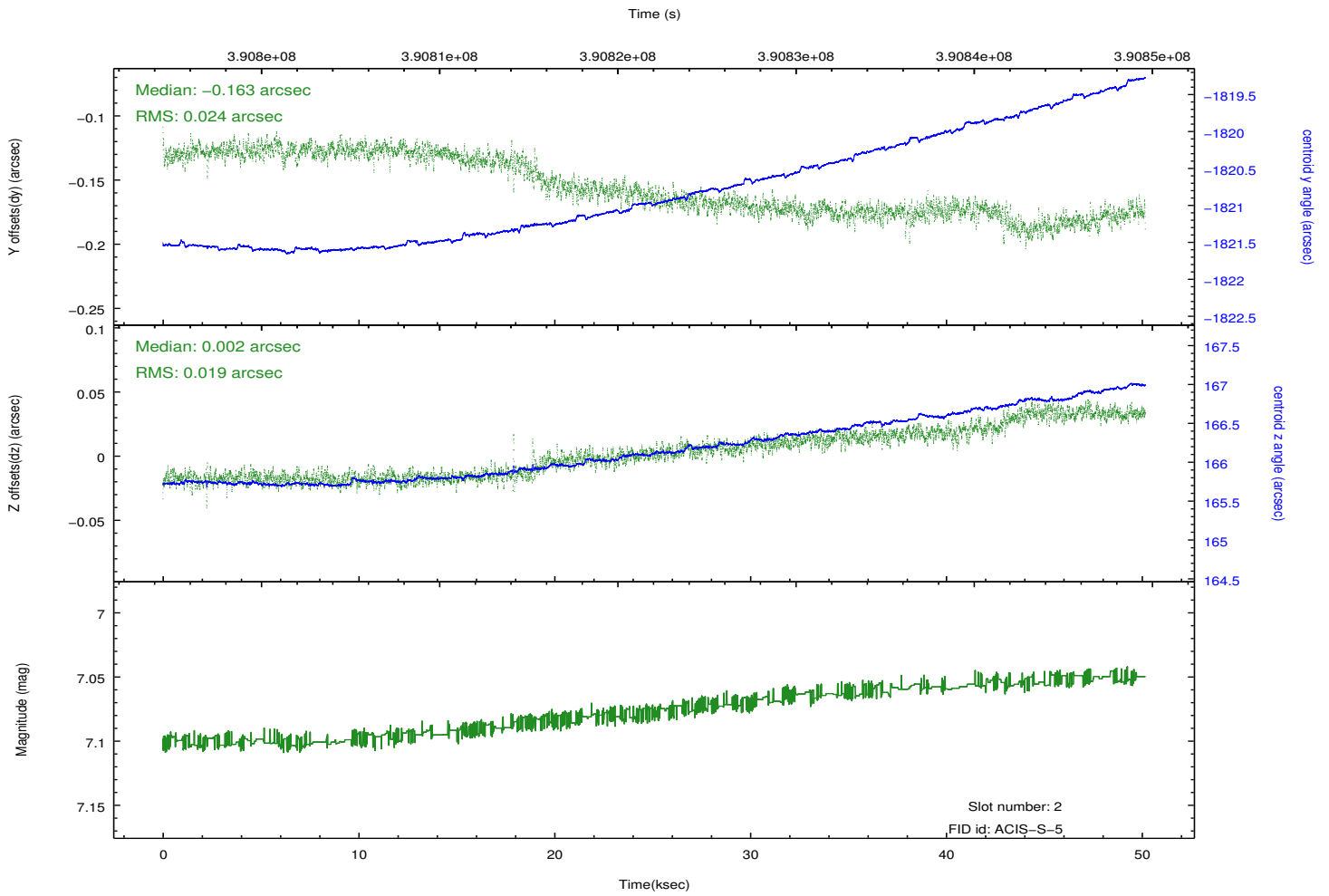
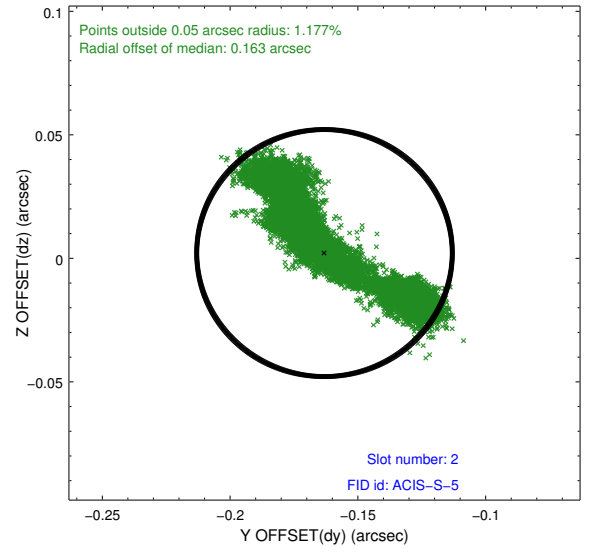
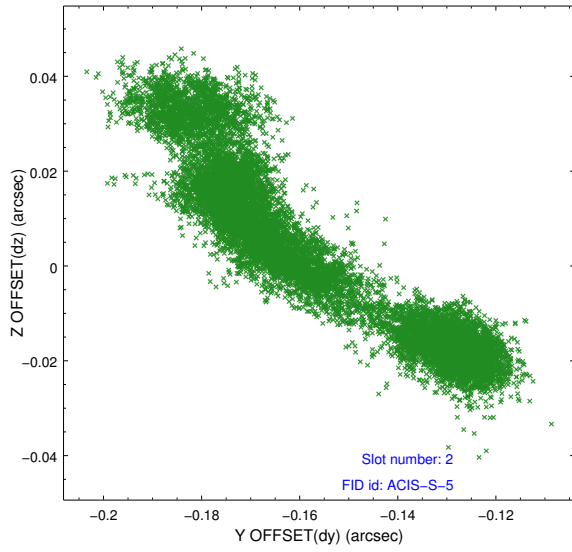
2.5.1 Slot 0



2.5.2 Slot 1



2.5.3 Slot 2



A Summary

A.1 Status

V&V Scientist	Jen Lauer
V&V Date (YYYY-MM-DD)	2012.07.02
V&V Edition	1
V&V Disposition and Status	OK
V&V Charge Time	50.035029160321

A.2 Comments