

# V&V Reference Report

## L2 ASCDS Version : 8.4.5

Observation 11491 - L2 Version 2  
Chandra X-Ray Center

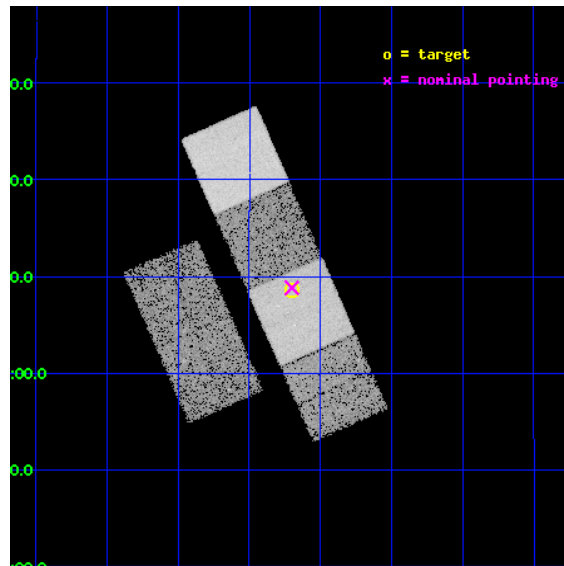
L2 Processing Date : Jun 18 2012

## Contents

<b>1</b>	<b>Front</b>	<b>2</b>
<b>2</b>	<b>OBI</b>	<b>3</b>
2.1	OBI . . . . .	3
2.1.1	Images . . . . .	3
2.1.2	Bias . . . . .	3
2.1.3	Parameters . . . . .	4
2.1.4	Events . . . . .	4
2.2	Compared Parameters . . . . .	5
2.3	Aspect . . . . .	6
2.4	Star Slots . . . . .	9
2.4.1	Slot 3 . . . . .	9
2.4.2	Slot 4 . . . . .	10
2.4.3	Slot 5 . . . . .	11
2.4.4	Slot 6 . . . . .	12
2.4.5	Slot 7 . . . . .	13
2.5	FID Slots . . . . .	14
2.5.1	Slot 0 . . . . .	14
2.5.2	Slot 1 . . . . .	15
2.5.3	Slot 2 . . . . .	16
<b>A</b>	<b>Summary</b>	<b>17</b>
A.1	Status . . . . .	17
A.2	Comments . . . . .	17

# 1 Front

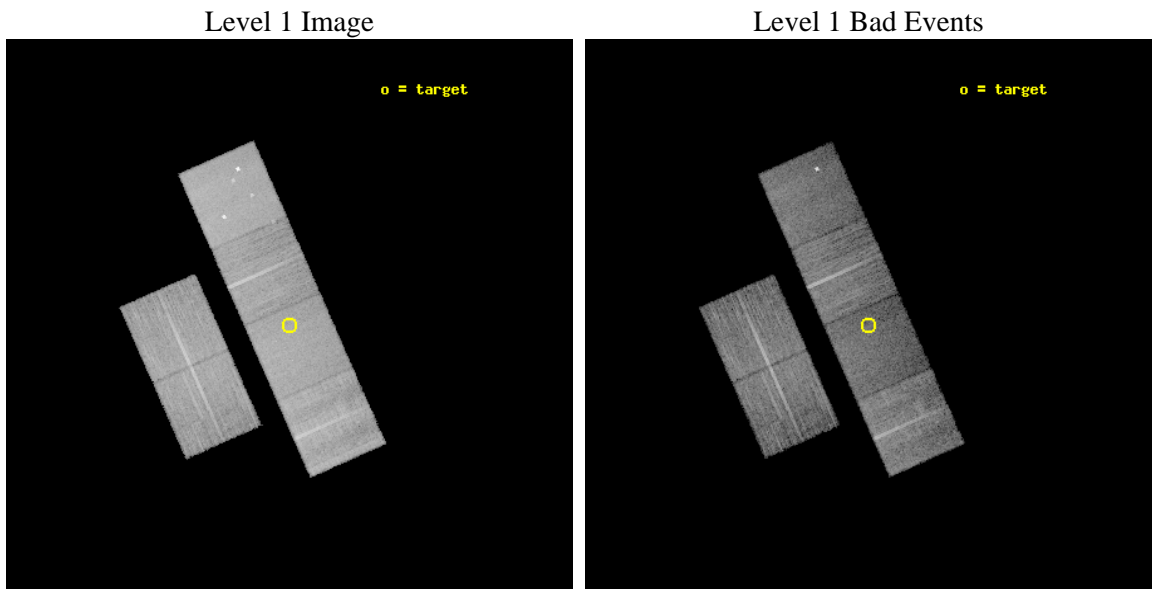
seq_num	702077	Sequence number
obs_id	11491	Observation id
title	Hunting for Intrinsically X-ray Weak Quasars: The Case of PHL 1811 Analogs	Proposal title
observer	Prof. William Brandt	Principal investigator
object	SDSS J0903+0708	Source name
dtcycle	0	&#160
cycle	P	events from which exps? Prim/Second/Both
ra_targ	135.800833	Observer's specified target RA [deg]
dec_targ	7.142333	Observer's specified target Dec [deg]
ra_nom	135.80012597193	Nominal RA [deg]
dec_nom	7.1471746225134	Nominal Dec [deg]
roll_nom	66.156744618406	Nominal Roll [deg]
revision	2	Processing version of data
ontime	11622.399956763	Sum of GTIs [s]
livetime	11475.230130341	Livetime [s]
ontime2	11622.399956763	Sum of GTIs [s]
ontime3	11622.399956763	Sum of GTIs [s]
ontime5	11622.399956763	Sum of GTIs [s]
ontime6	11622.399956763	Sum of GTIs [s]
ontime7	11622.399956763	Sum of GTIs [s]
ontime8	11622.399956763	Sum of GTIs [s]
l2events	157624	Number of level 2 events



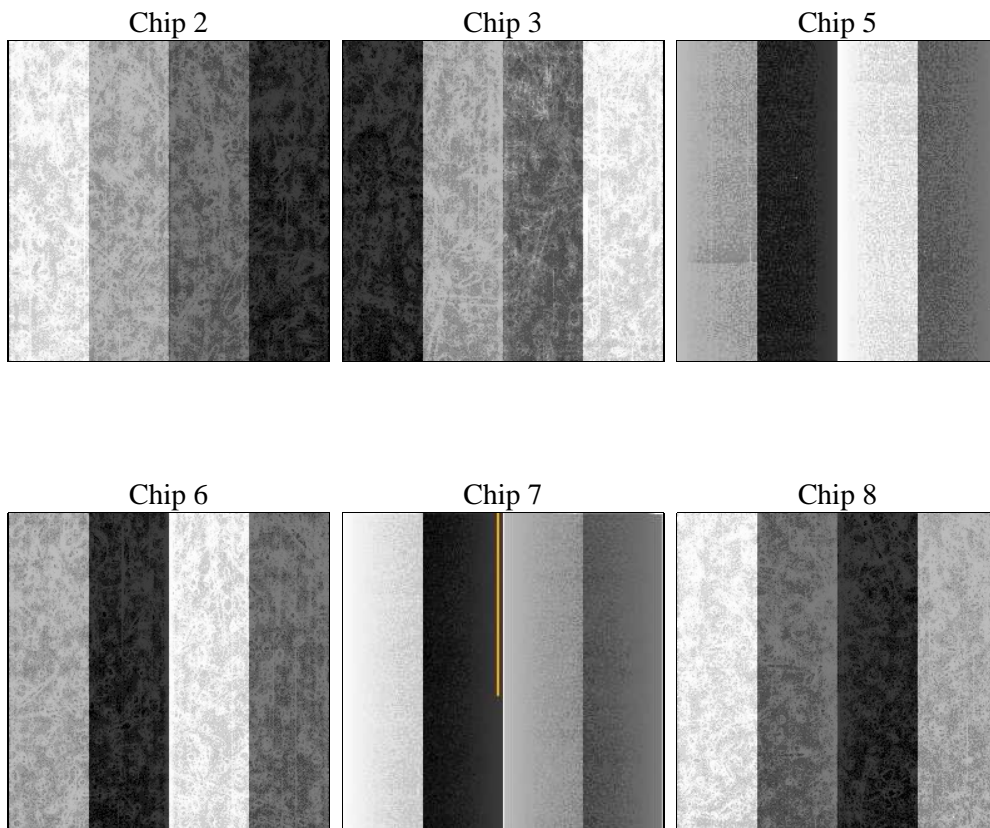
## 2 OBI

### 2.1 OBI

#### 2.1.1 Images



#### 2.1.2 Bias



### 2.1.3 Parameters

obi_num	0	Obi number	sched_exp_time	11500.000000	[s] Scheduled observation exposure time
ascdsver	8.4.5	Processing system revision	ontime	11622.399956763	Sum of GTIs [s]
caldbver	4.4.10	&#160	ontime2	11622.399956763	Sum of GTIs [s]
date	2012-06-18T19:31:23	Date and time of file creation	ontime3	11622.399956763	Sum of GTIs [s]
revision	2	Processing version of data	ontime5	11622.399956763	Sum of GTIs [s]
			ontime6	11622.399956763	Sum of GTIs [s]
			ontime7	11622.399956763	Sum of GTIs [s]
			ontime8	11622.399956763	Sum of GTIs [s]
			l1events	727200	Number of level 1 events

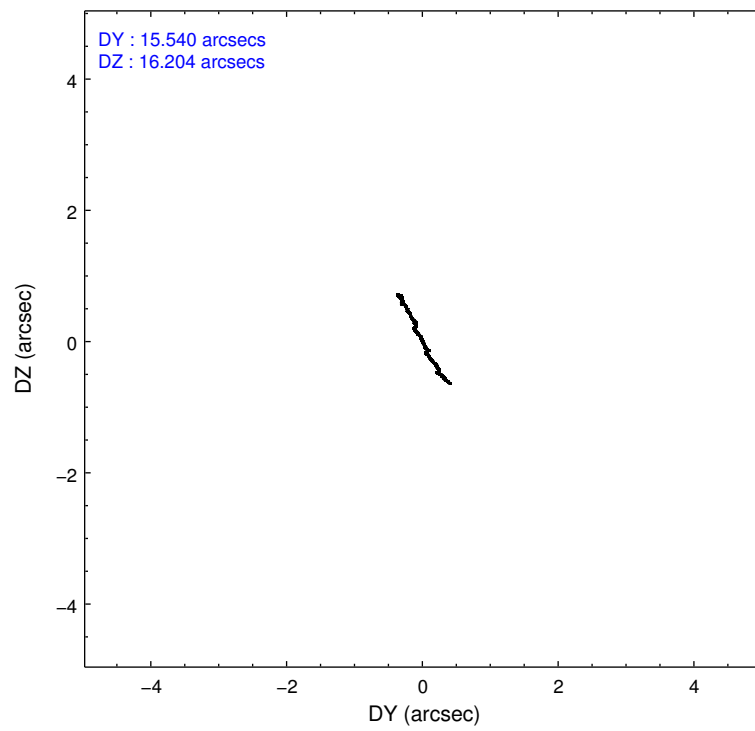
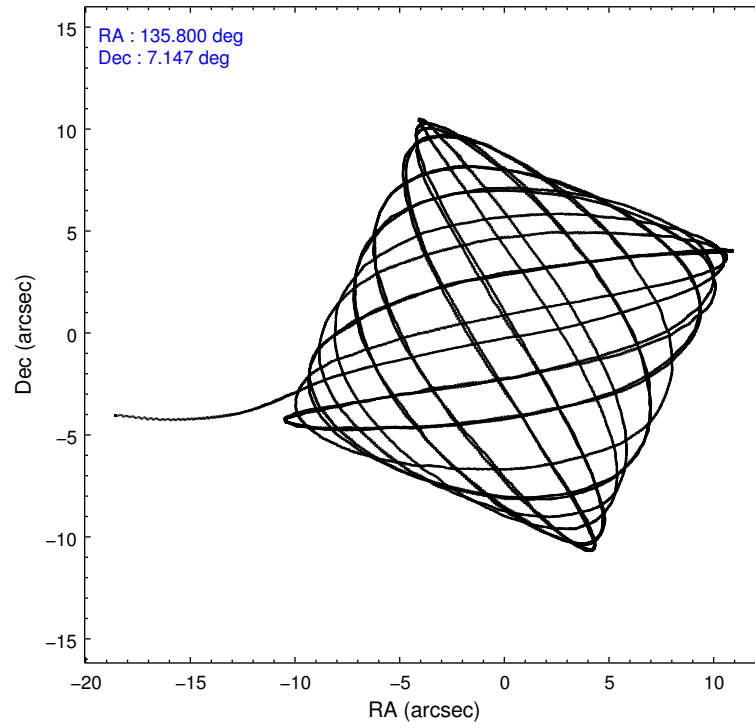
### 2.1.4 Events

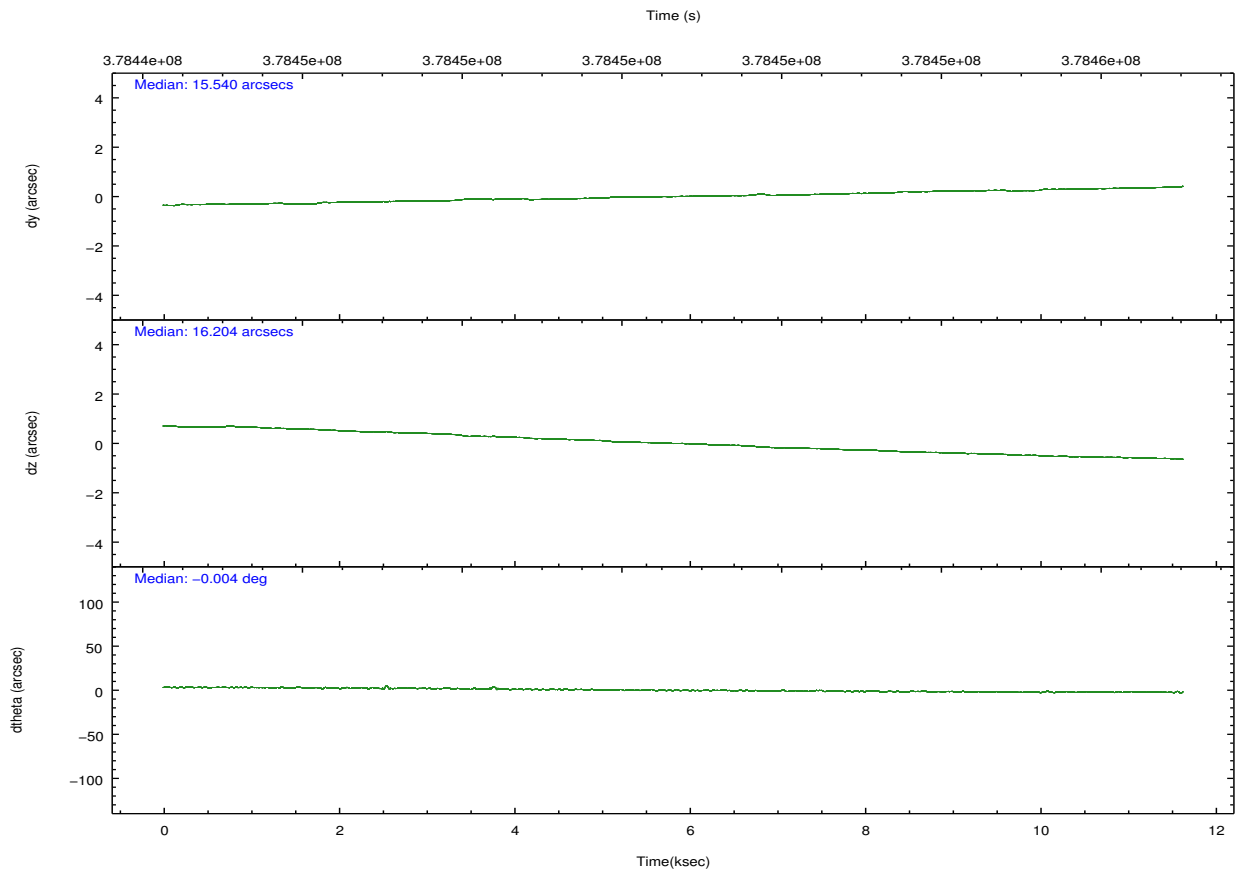
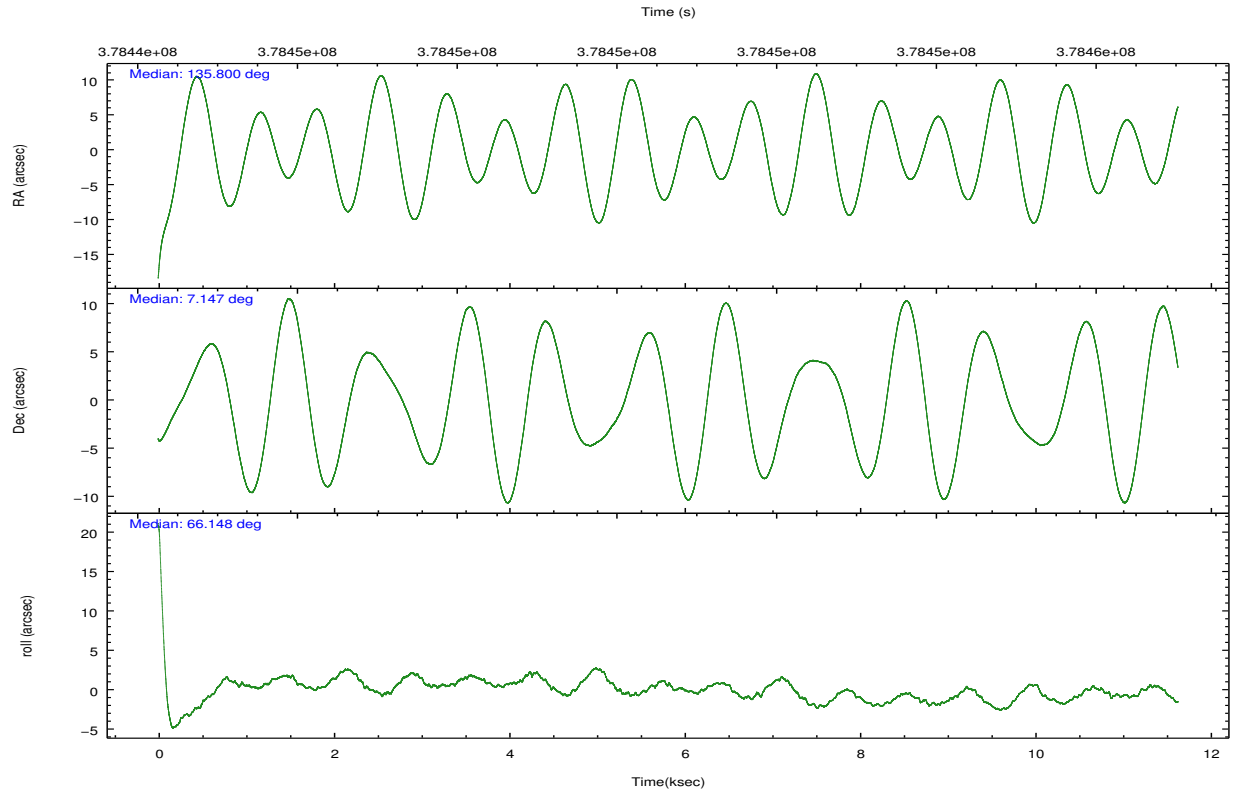
	ccd 2	ccd 3	ccd 5	ccd 6	ccd 7	ccd 8		ccd 2	ccd 3	ccd 5	ccd 6	ccd 7	ccd 8
level 1 events	110369	102094	153360	106581	120061	134735	grade 0 events	3816	3598	8567	3869	5154	10274
rejected events	99858	92382	78931	95790	66879	101460		3%	3%	5%	3%	4%	7%
rejected %	90%	90%	51%	89%	55%	75%	grade 1 events	61	59	305	54	177	103
								0%	0%	0%	0%	0%	0%
							grade 2 events	2666	2184	23057	2368	11114	7959
								2%	2%	15%	2%	9%	5%
							grade 3 events	1079	1130	3049	1192	4888	3631
								0%	1%	1%	1%	4%	2%
							grade 4 events	1136	1117	2871	1157	4992	3357
								1%	1%	1%	1%	4%	2%
							grade 5 events	3846	4314	12701	4331	12536	6254
								3%	4%	8%	4%	10%	4%
							grade 6 events	2080	1914	38892	2493	28548	9033
								1%	1%	25%	2%	23%	6%
							grade 7 events	95685	87778	63918	91117	52652	94124
								86%	85%	41%	85%	43%	69%

## 2.2 Compared Parameters

Parameter	Planned	Actual	Parameter	Planned	Actual
Instrument	ACIS	ACIS	Obspar format version number	7	7
Detector	ACIS-235678	ACIS-235678	Obspar file type	PREDICTED	ACTUAL
Grating	NONE	NONE	Obspar update status	NONE	UPDATED
Data mode	FAINT	FAINT	CCD I0 on	N	N
Observation mode	POINTING	POINTING	CCD I1 on	N	N
[deg] Pointing RA	135.803494	135.8001259719324	CCD I2 on	O2	Y
[deg] Pointing Dec	7.119996	7.147174622513434	CCD I3 on	O1	Y
[deg] Pointing Roll	65.999667	66.15674461840553	CCD S0 on	N	N
[mm] SIM focus pos	-0.684267	-0.6828225247311905	CCD S1 on	Y	Y
[mm] SIM defocus	0	0.001444936568705701	CCD S2 on	Y	Y
[mm] SIM translation stage pos	-190.132523	-190.1400660498719	CCD S3 on	Y	Y
[mm] SIM translation stage offset	0	0.00754346686406393	CCD S4 on	Y	Y
[s] Observation start time (MET)	378444950.184000	378443749.83669	CCD S5 on	N	N
Observation start date	2009-12-29T03:34:44	2009-12-29T03:15:49	Number of optional ACIS chips dropped	0	0
[s] Observation end time (MET)	378456450.184000	378457993.23741	On-chip summing requested	N	N
Observation end date	2009-12-29T06:46:24	2009-12-29T07:13:13	Subarray requested	NONE	NONE
Read mode	TIMED	TIMED	Alternating exposures requested	N	N
			[s] Primary exposure time	0.000000	3.2

## 2.3 Aspect



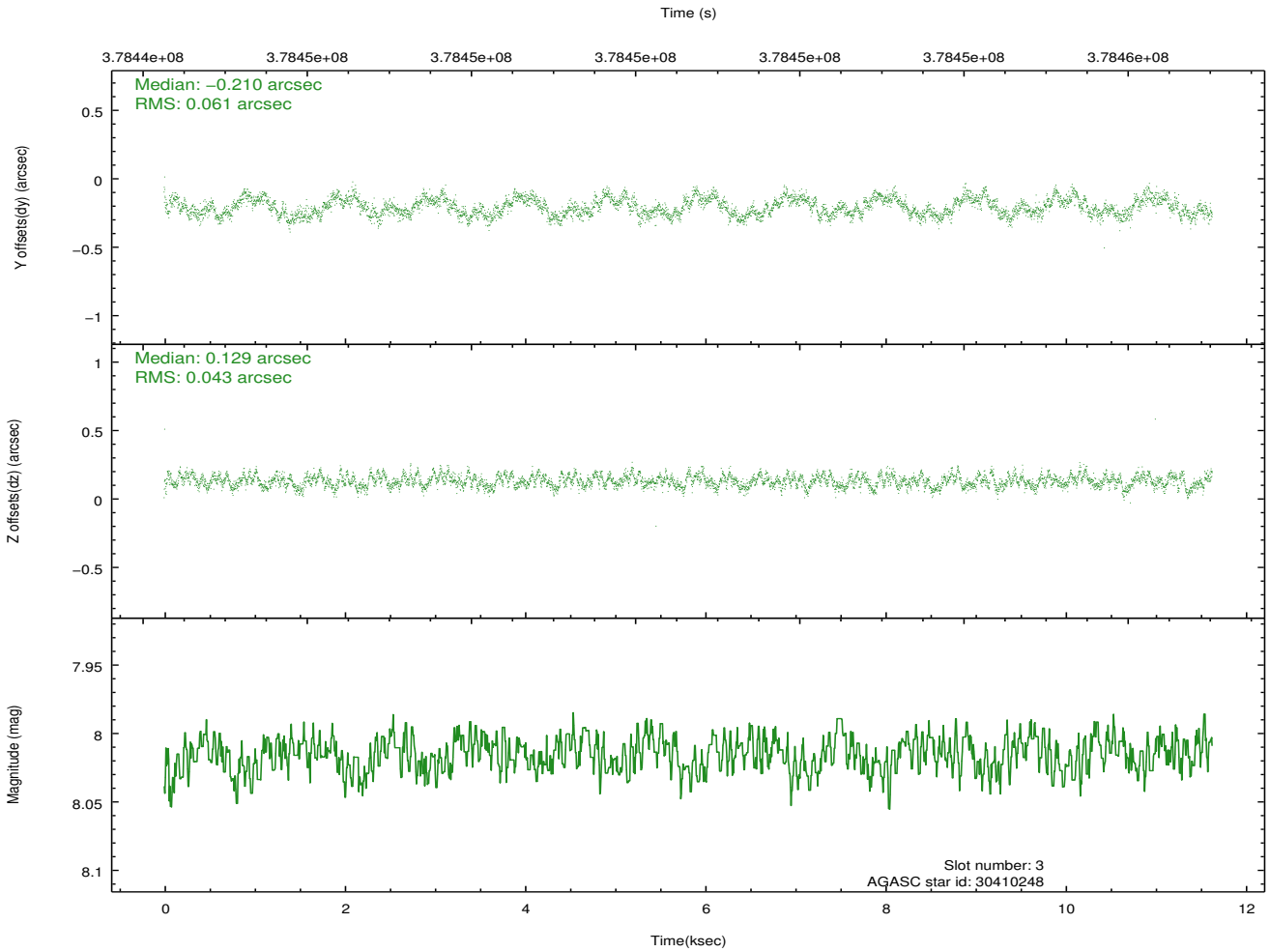
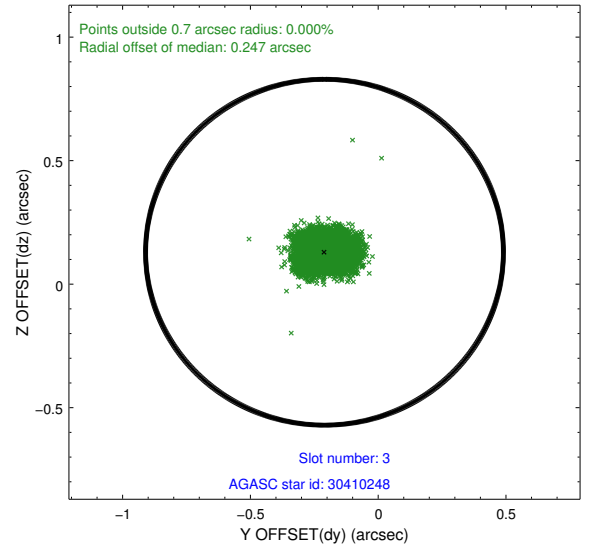
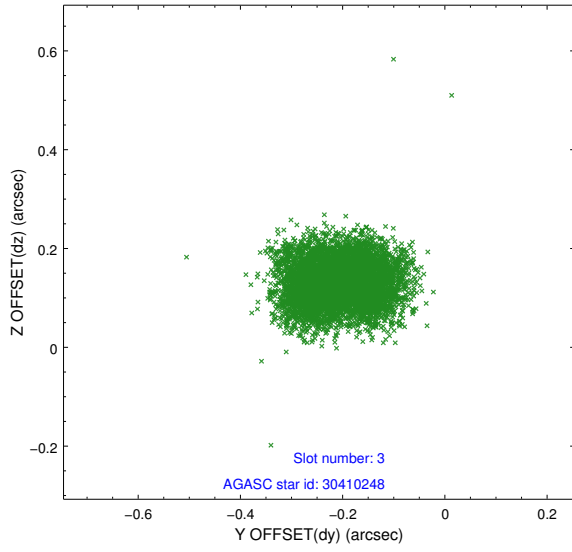


### Slot Statistics

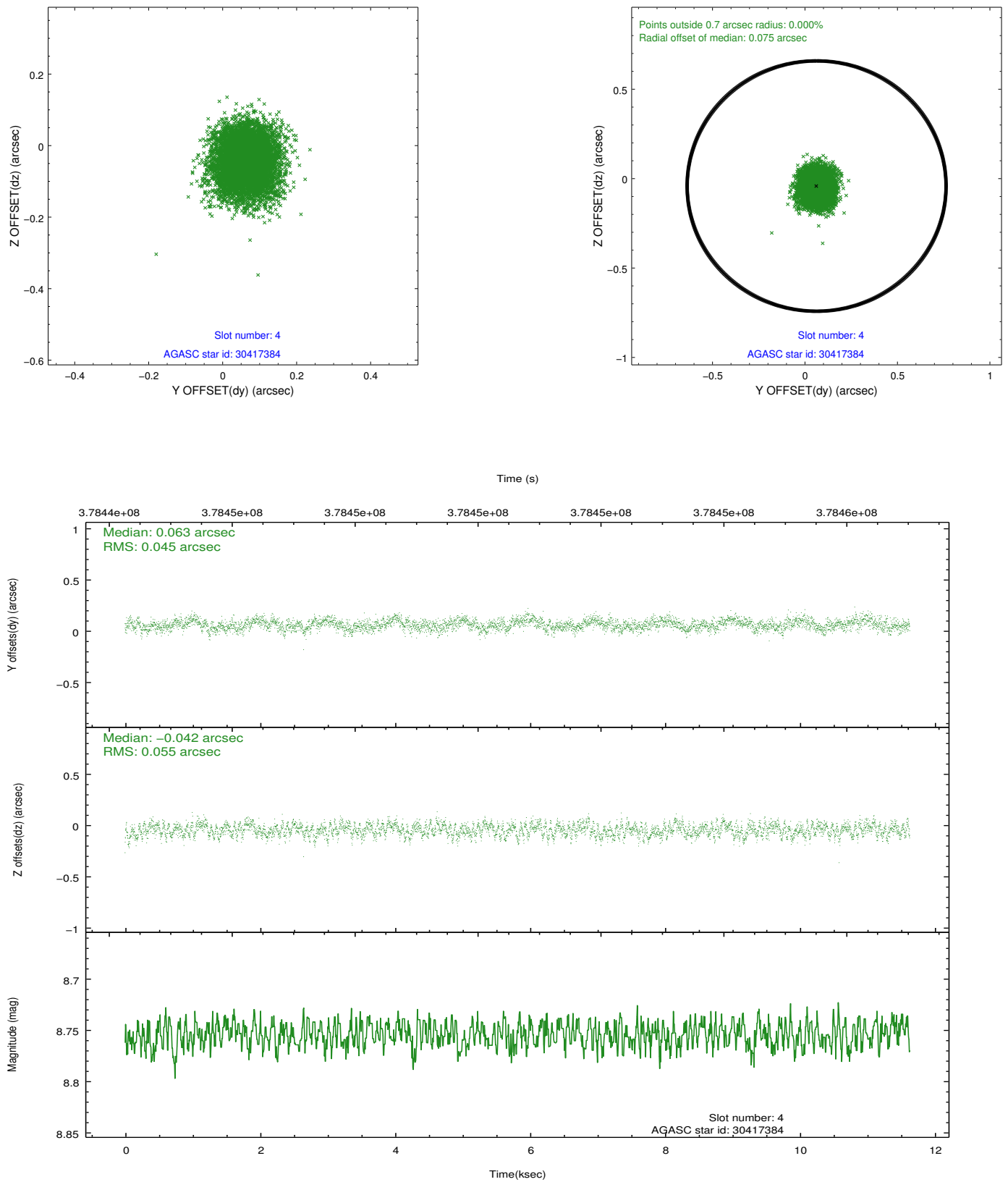
slot	status	id	mag	n_pts	med_dy	med_dz	dr1	dr2	ra	dec	mean_y	mean_z
0	FID	ACIS-S-2	6.86	2837	-0.075	0.003	0.011	0.020	0.000000	0.000000	-768.60	-1737.63
1	FID	ACIS-S-4	6.94	2837	0.136	0.035	0.007	0.011	0.000000	0.000000	2144.69	170.43
2	FID	ACIS-S-5	6.97	2837	-0.092	-0.030	0.013	0.026	0.000000	0.000000	-1820.91	164.53
3	GUIDE	30410248	8.02	5675	-0.210	0.129	0.081	0.125	136.514690	7.190004	1265.52	-2216.63
4	GUIDE	30417384	8.75	5669	0.063	-0.042	0.076	0.122	136.359615	6.823054	-166.21	-2250.64
5	GUIDE	30418368	7.43	5674	-0.055	0.186	0.066	0.103	136.116026	6.446118	-1760.86	-2008.15
6	GUIDE	30418648	8.67	5672	0.152	-0.308	0.075	0.119	135.236443	6.651908	-2363.34	1166.71
7	GUIDE	30414880	9.30	5665	0.049	0.035	0.131	0.198	136.165200	6.315709	-2118.37	-2359.71

## 2.4 Star Slots

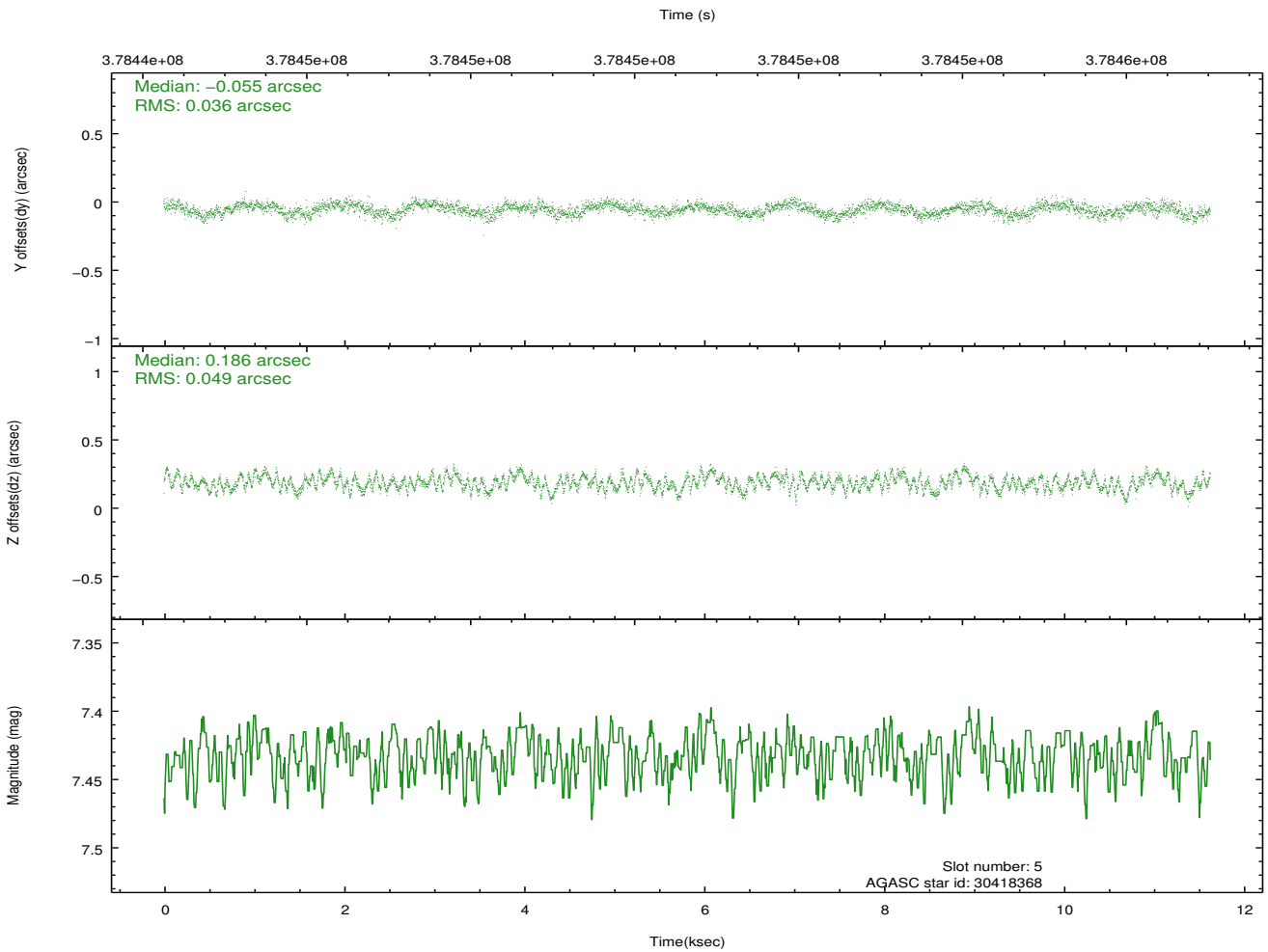
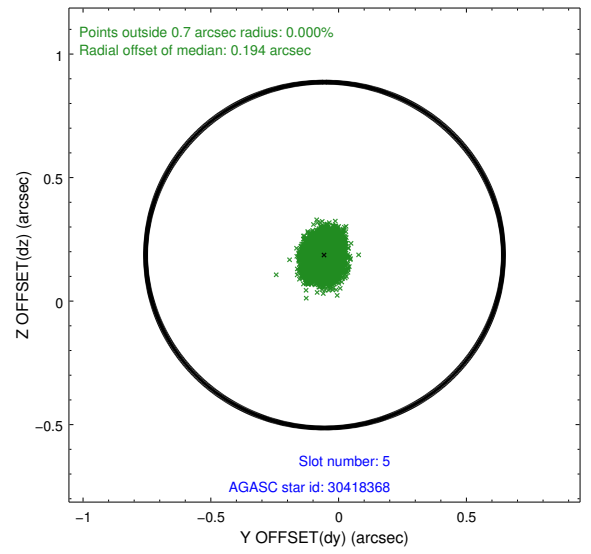
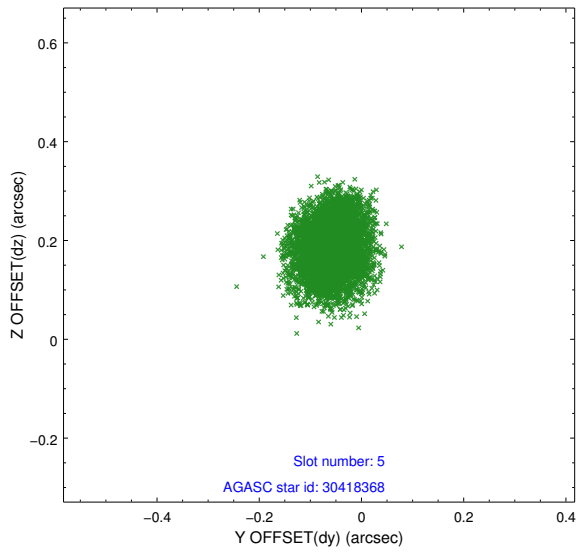
### 2.4.1 Slot 3



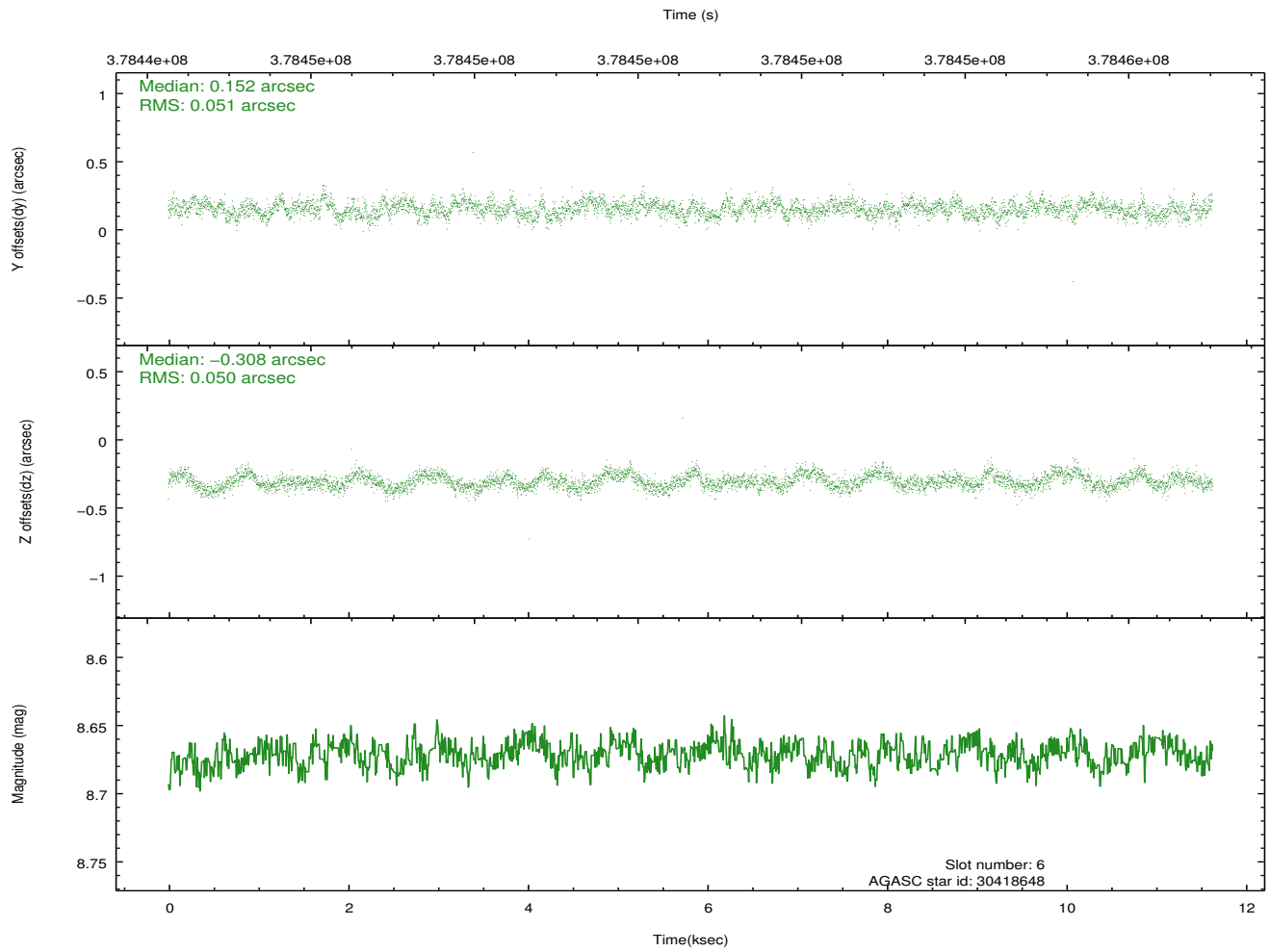
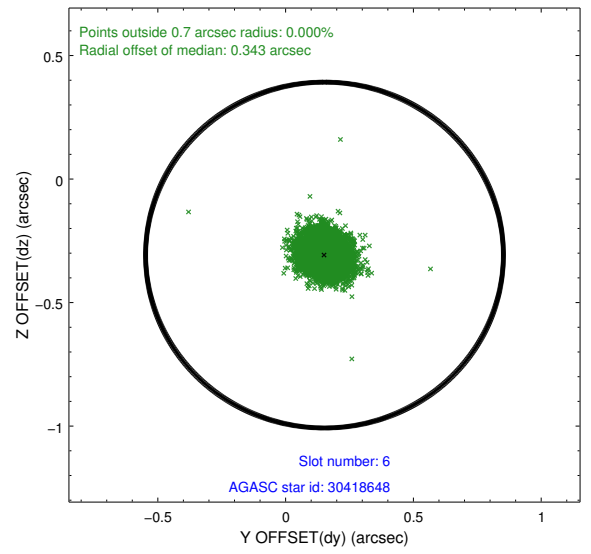
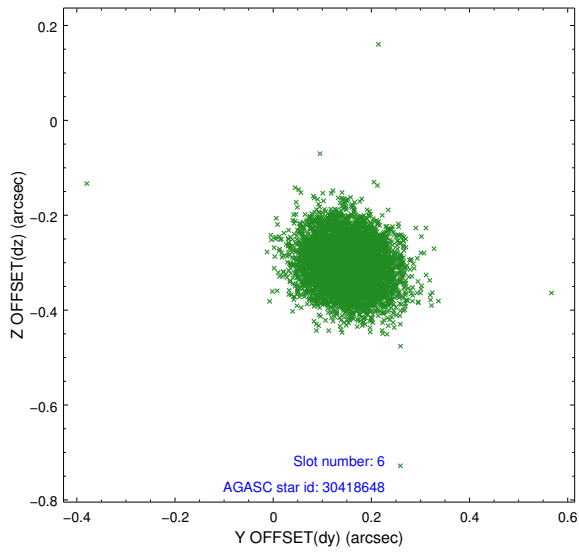
## 2.4.2 Slot 4



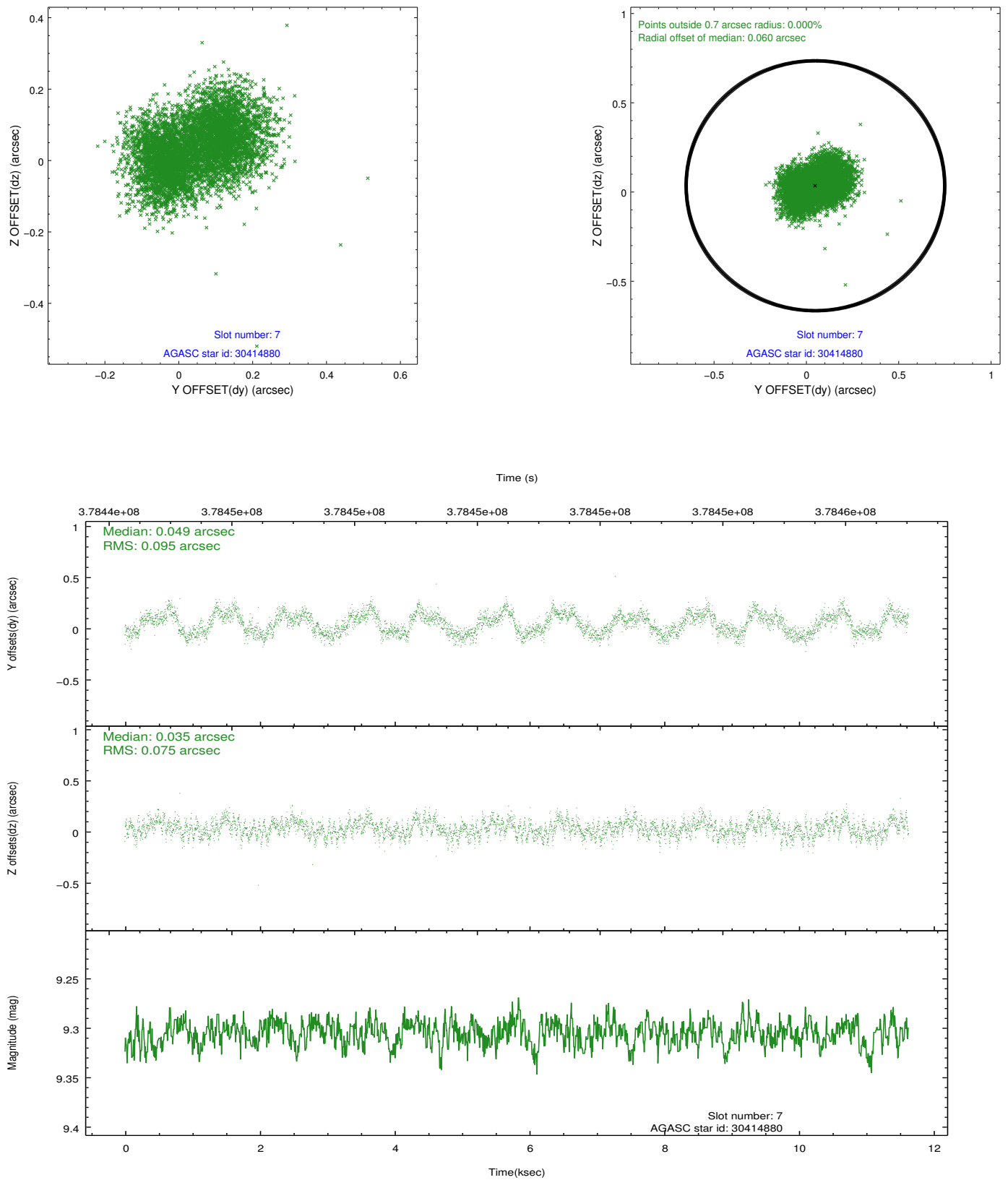
### 2.4.3 Slot 5



### 2.4.4 Slot 6

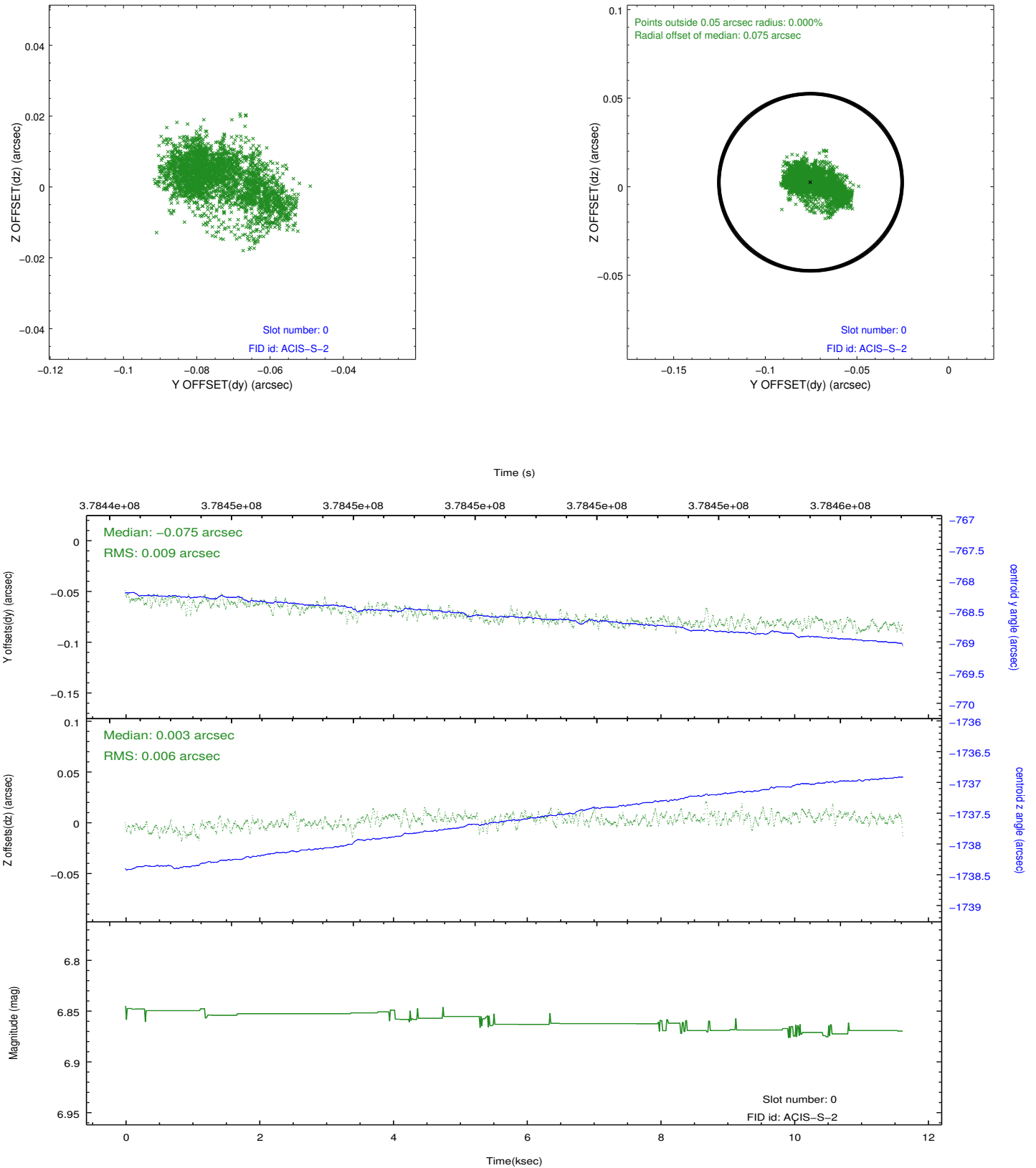


## 2.4.5 Slot 7

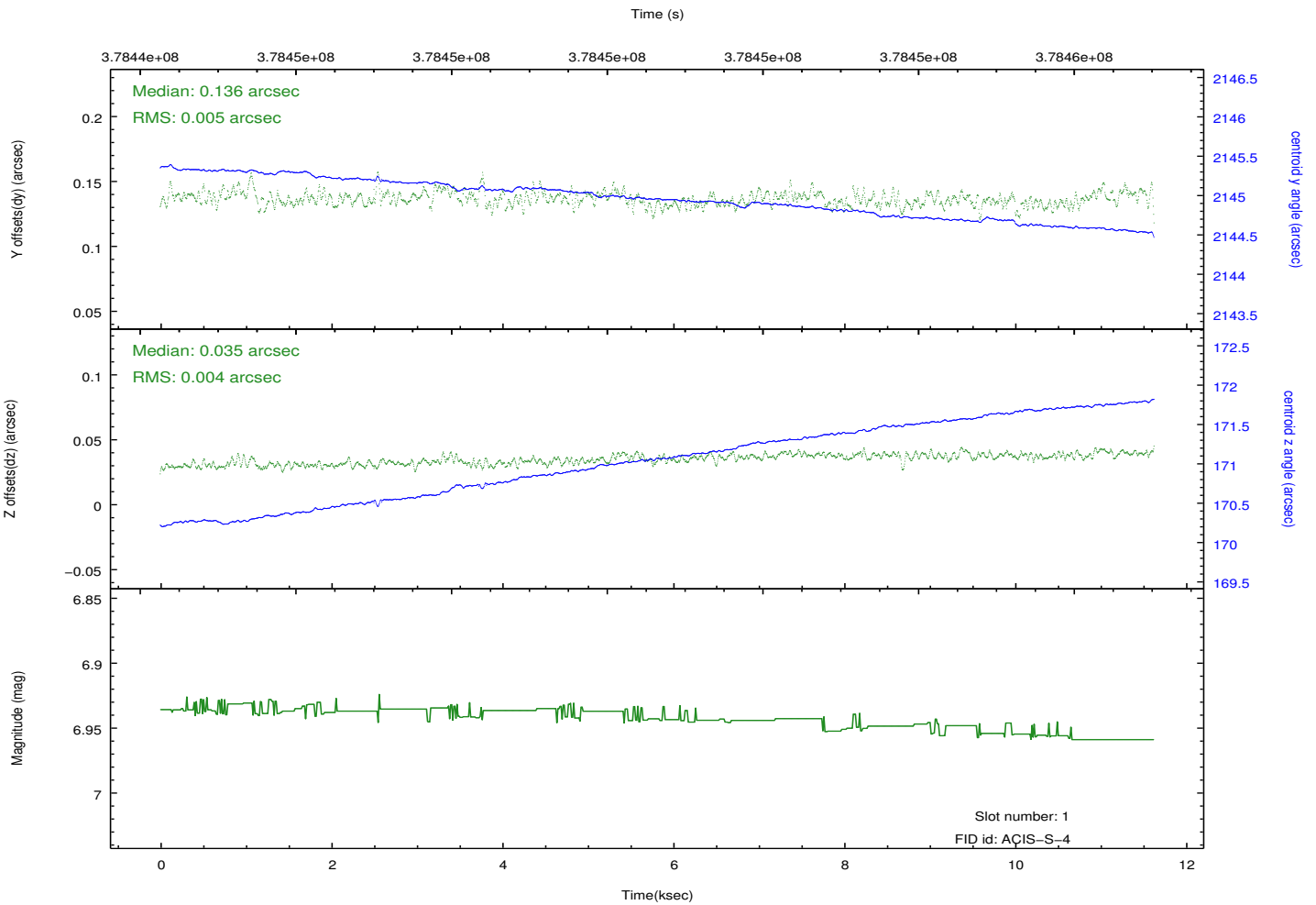
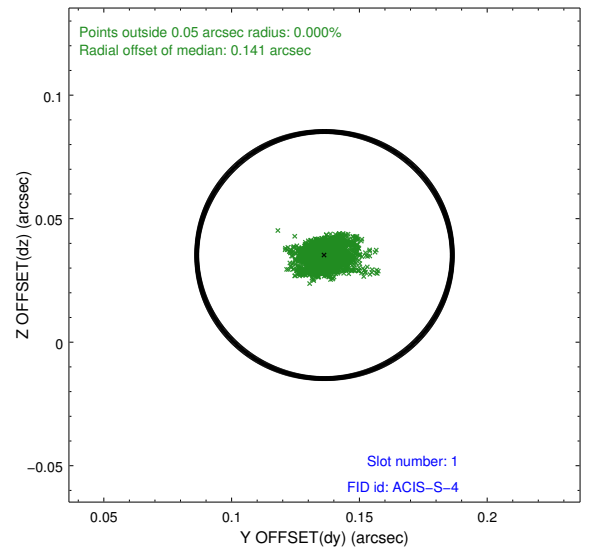
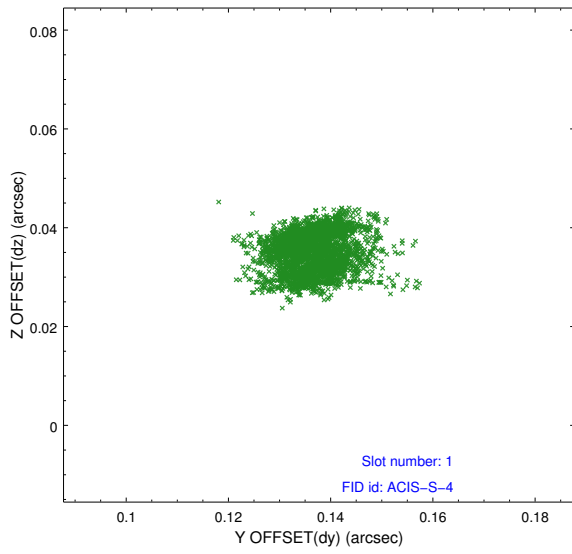


## 2.5 FID Slots

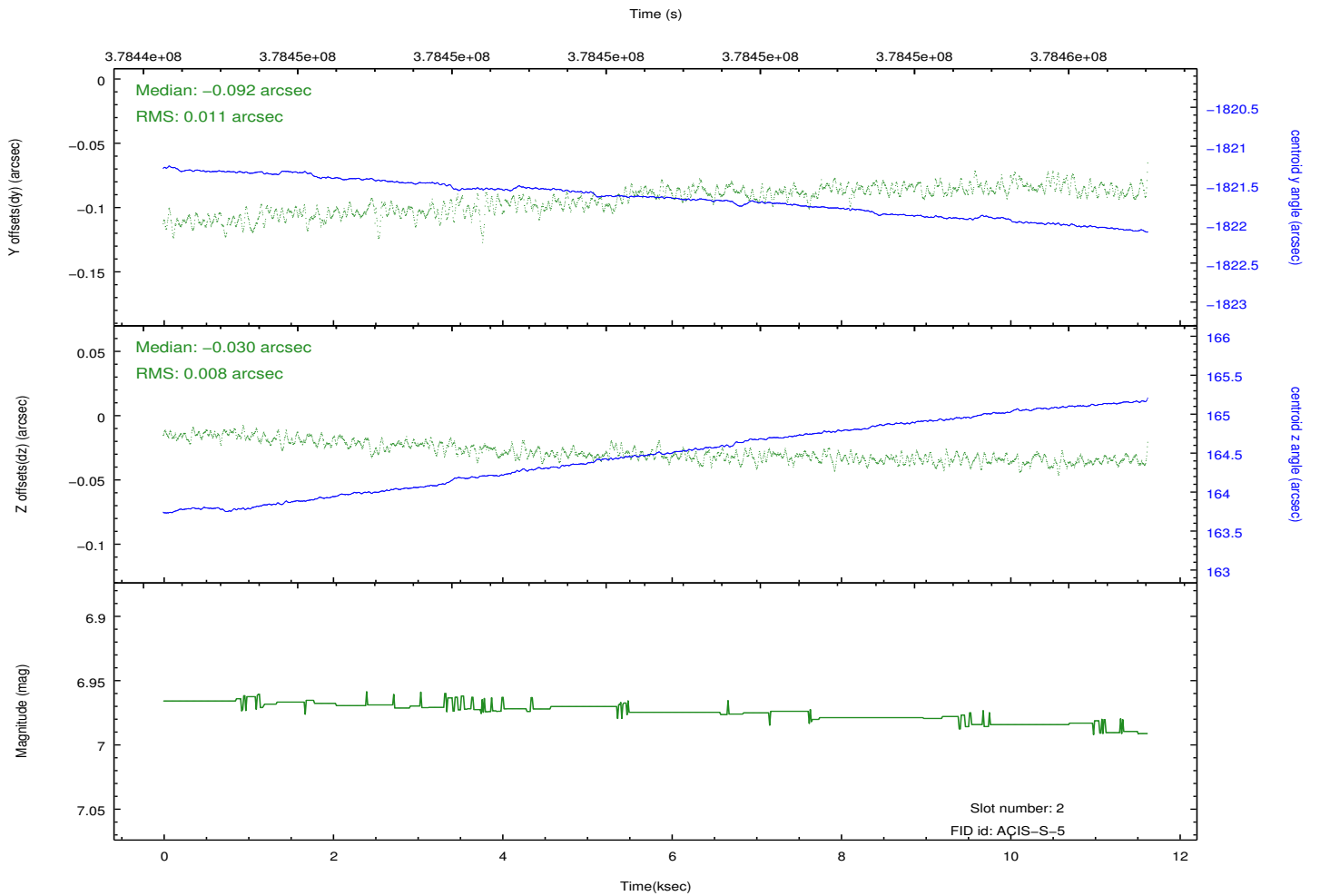
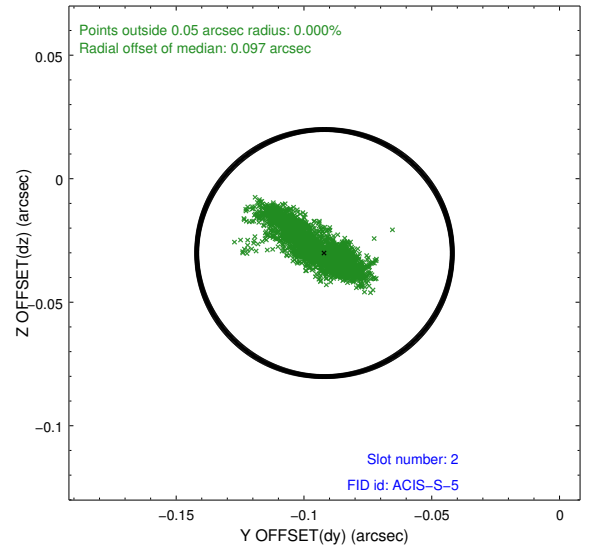
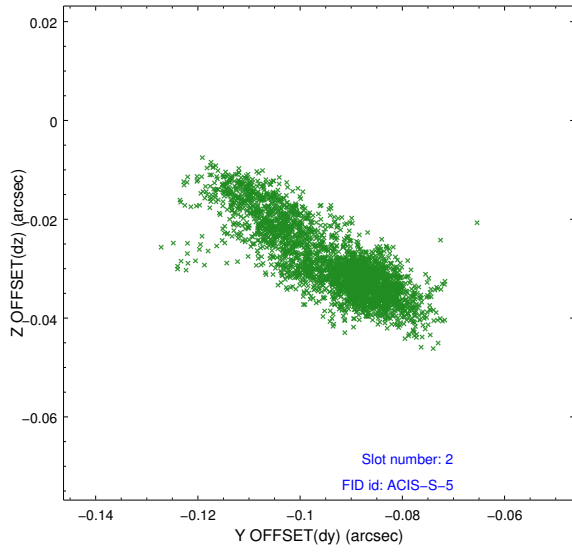
### 2.5.1 Slot 0



## 2.5.2 Slot 1



### 2.5.3 Slot 2



# A Summary

## A.1 Status

V&V Scientist	Beth Sundheim
V&V Date (YYYY-MM-DD)	2012.06.22
V&V Edition	1
V&V Disposition and Status	OK
V&V Charge Time	11.622399956763

## A.2 Comments