

V&V Reference Report

L2 ASCDS Version : 8.4.5

Observation 11531 - L2 Version 2
Chandra X-Ray Center

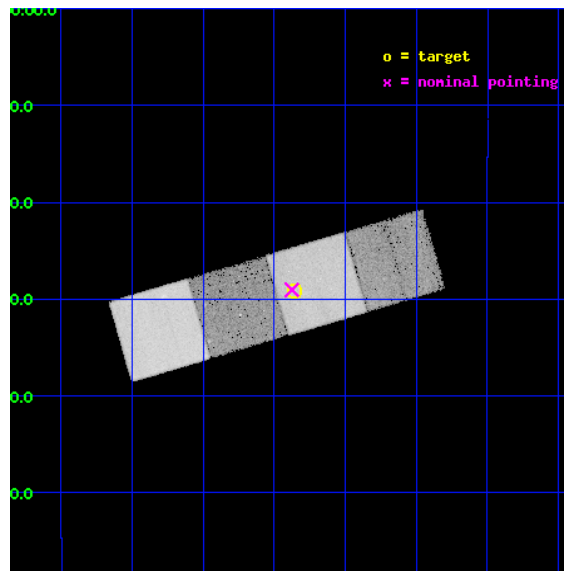
L2 Processing Date : Jun 14 2012

Contents

1	Front	2
2	OBI	3
2.1	OBI	3
2.1.1	Images	3
2.1.2	Bias	3
2.1.3	Parameters	4
2.1.4	Events	4
2.2	Compared Parameters	5
2.3	Aspect	6
2.4	Star Slots	9
2.4.1	Slot 3	9
2.4.2	Slot 4	10
2.4.3	Slot 5	11
2.4.4	Slot 6	12
2.4.5	Slot 7	13
2.5	FID Slots	14
2.5.1	Slot 0	14
2.5.2	Slot 1	15
2.5.3	Slot 2	16
A	Summary	17
A.1	Status	17
A.2	Comments	17

1 Front

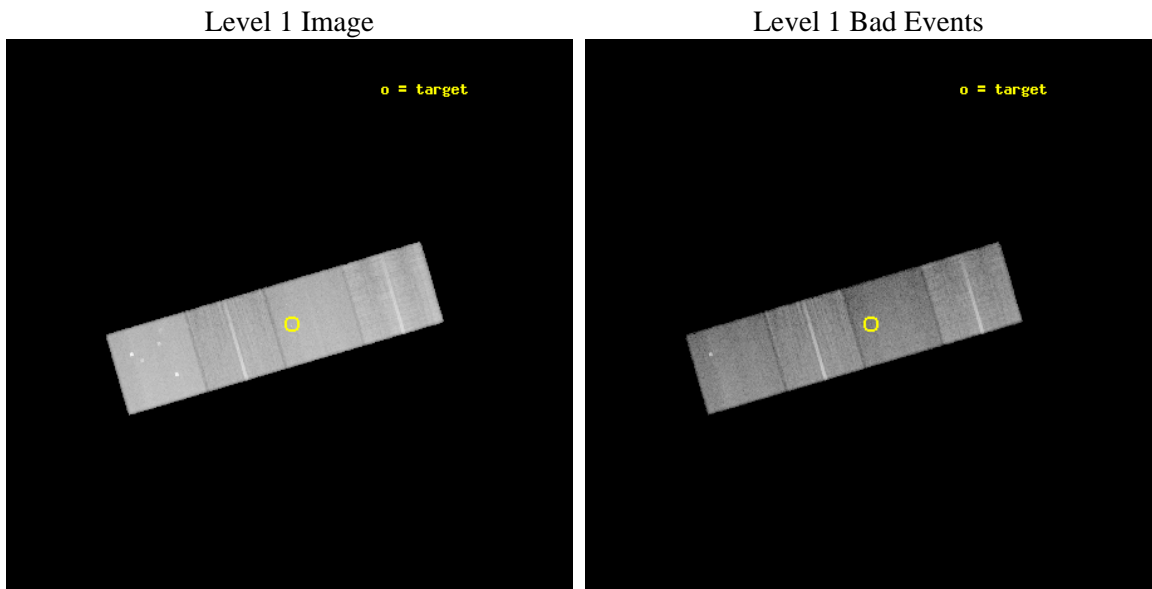
seq_num	702117	Sequence number
obs_id	11531	Observation id
title	Deeply embedded AGNs in infrared ultraluminous starbursts	Proposal
observer	Dr Guido Risaliti	Principal investigator
object	IRAS 01298-0744	Source name
dtcycle	0	
cycle	P	events from which exps? Prim/Second/Both
ra_targ	23.089167	Observer's specified target RA [deg]
dec_targ	-7.485556	Observer's specified target Dec [deg]
ra_nom	23.093886721383	Nominal RA [deg]
dec_nom	-7.4842666708576	Nominal Dec [deg]
roll_nom	343.65725502487	Nominal Roll [deg]
revision	2	Processing version of data
ontime	21138.900162578	Sum of GTIs [s]
liveltime	20862.704869722	Livetime [s]
ontime5	21138.900162578	Sum of GTIs [s]
ontime6	21138.900162578	Sum of GTIs [s]
ontime7	21138.900162578	Sum of GTIs [s]
ontime8	21135.759182215	Sum of GTIs [s]
l2events	256635	Number of level 2 events



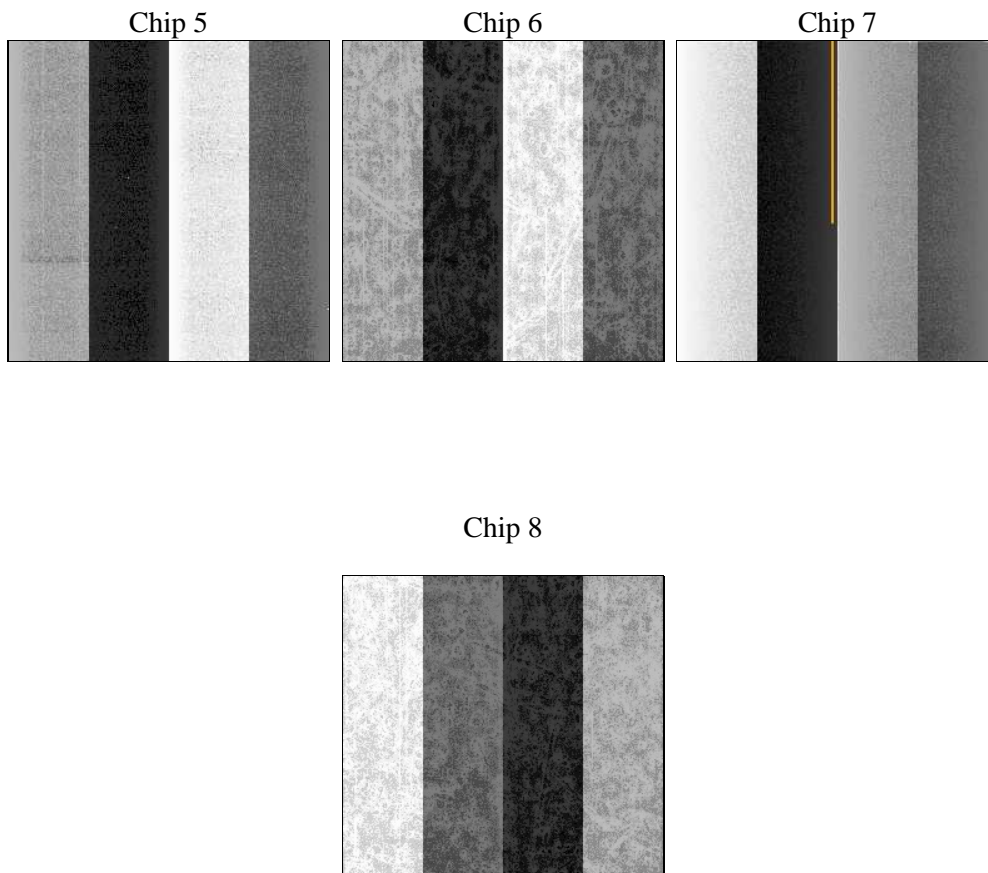
2 OBI

2.1 OBI

2.1.1 Images



2.1.2 Bias



2.1.3 Parameters

obi_num	2	Obi number	sched_exp_time	21000.000000	[s] Scheduled observation exposure time
ascdsver	8.4.5	Processing system revision	ontime	21138.900162578	Sum of GTIs [s]
caldbver	4.4.10	 	ontime5	21138.900162578	Sum of GTIs [s]
date	2012-06-15T01:00:38	Date and time of file creation	ontime6	21138.900162578	Sum of GTIs [s]
revision	2	Processing version of data	ontime7	21138.900162578	Sum of GTIs [s]
			ontime8	21135.759182215	Sum of GTIs [s]
			l1events	940410	Number of level 1 events

2.1.4 Events

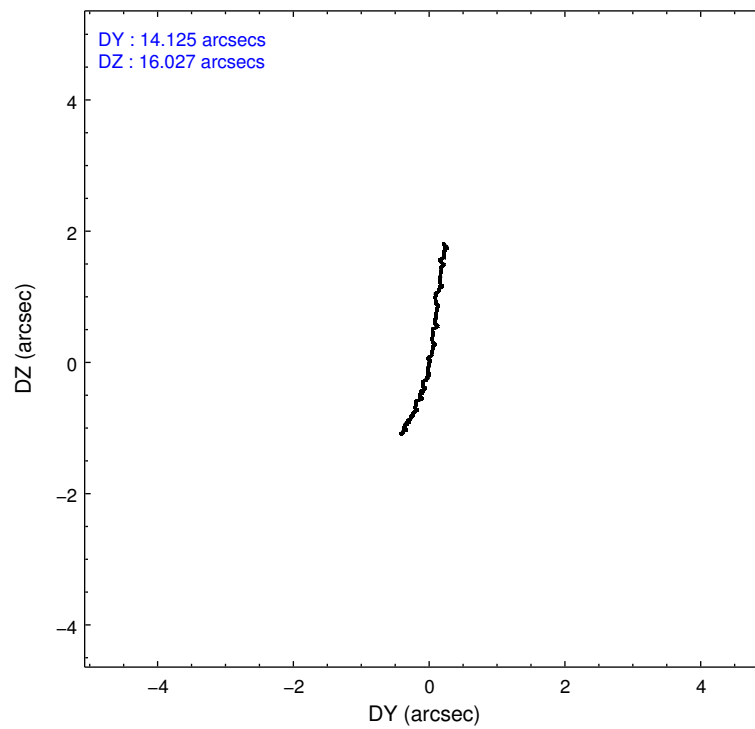
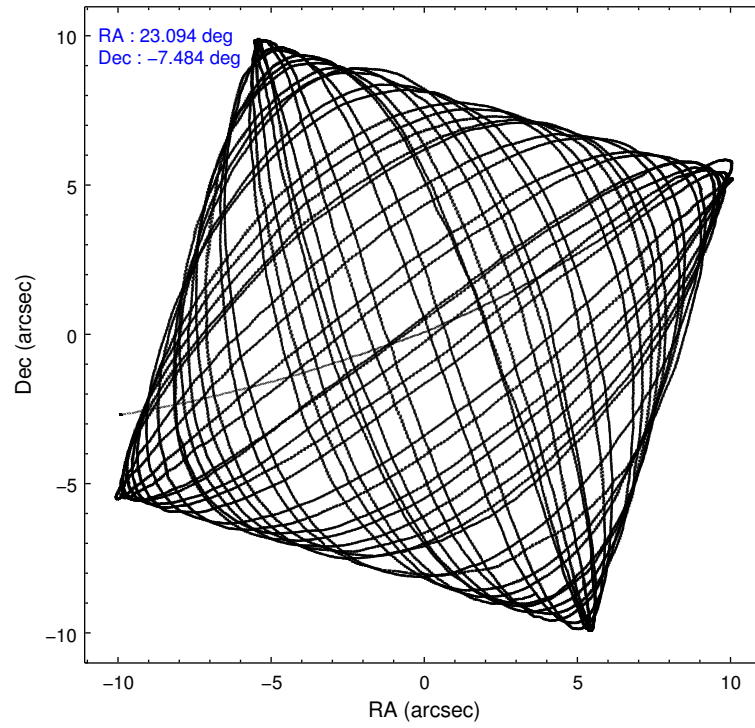
	ccd 5	ccd 6	ccd 7	ccd 8
level 1 events	277177	195153	219098	248982
rejected events	141972	175157	122061	187536
rejected %	51%	89%	55%	75%

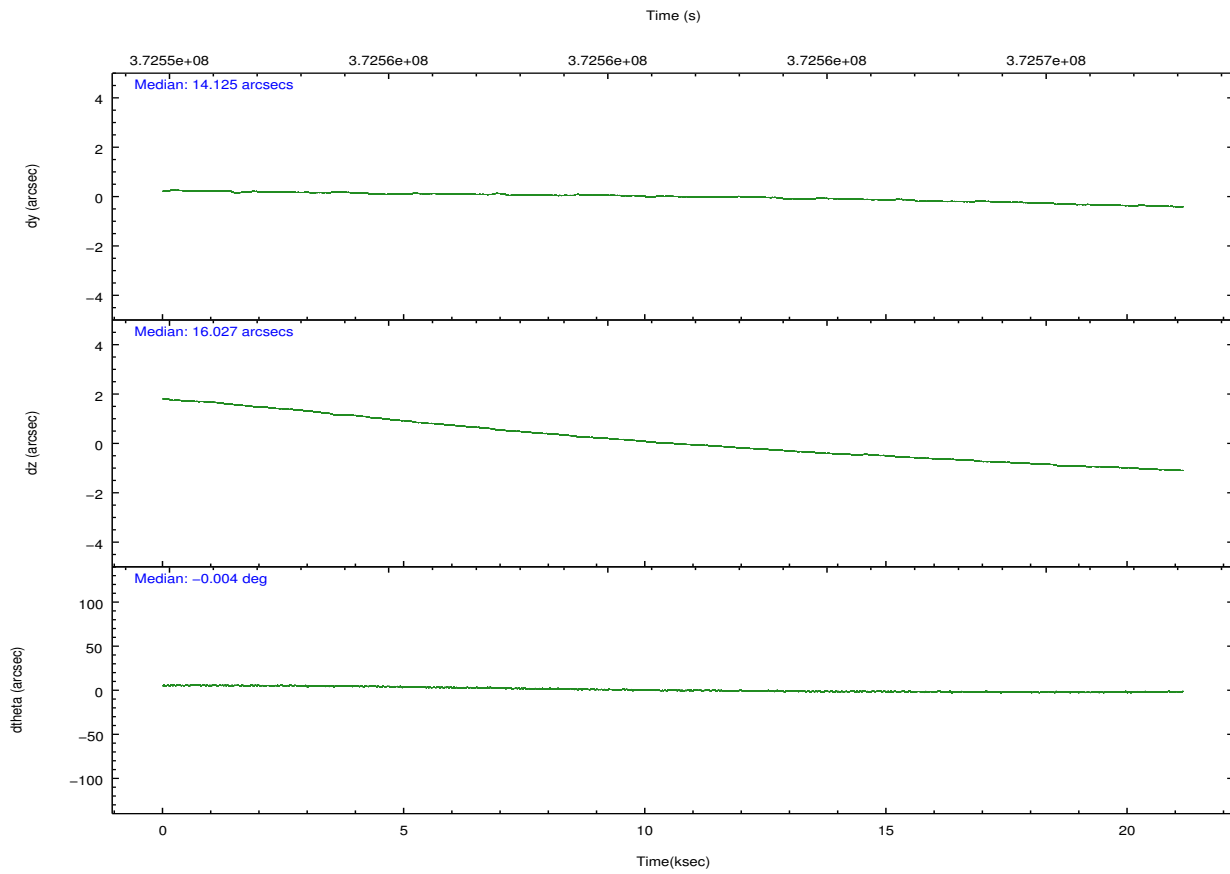
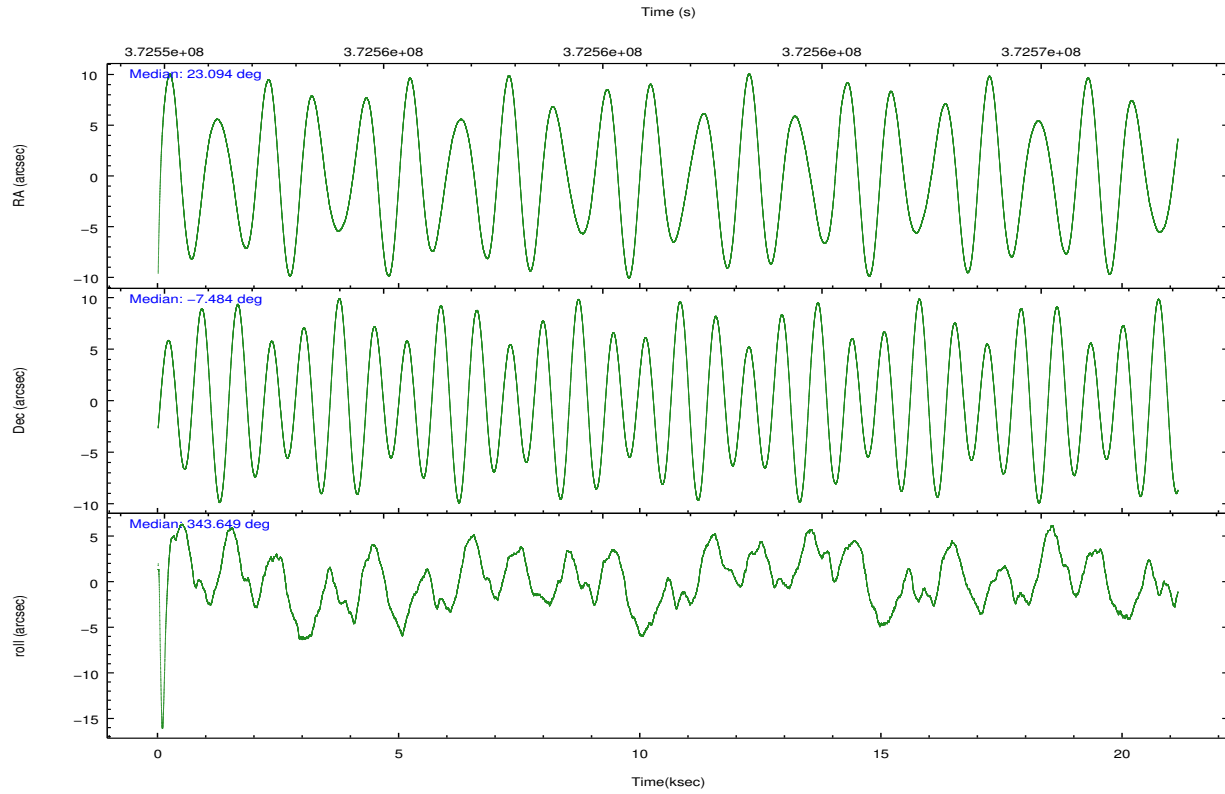
	ccd 5	ccd 6	ccd 7	ccd 8
grade 0 events	14235	7231	9104	18810
	5%	3%	4%	7%
grade 1 events	558	103	297	214
	0%	0%	0%	0%
grade 2 events	42240	4577	20504	14740
	15%	2%	9%	5%
grade 3 events	5450	2168	8977	6605
	1%	1%	4%	2%
grade 4 events	5320	2152	8883	6071
	1%	1%	4%	2%
grade 5 events	21513	8079	22957	11819
	7%	4%	10%	4%
grade 6 events	71638	4404	52159	16952
	25%	2%	23%	6%
grade 7 events	116223	166439	96217	173771
	41%	85%	43%	69%

2.2 Compared Parameters

Parameter	Planned	Actual	Parameter	Planned	Actual
Instrument	ACIS	ACIS	Obspar format version number	7	7
Detector	ACIS-5678	ACIS-5678	Obspar file type	PREDICTED	ACTUAL
Grating	NONE	NONE	Obspar update status	NONE	UPDATED
Data mode	VFAINT	VFAINT	Number of optional ACIS chips dropped	0	0
Observation mode	POINTING	POINTING	On-chip summing requested	N	N
[deg] Pointing RA	23.067175	23.09388672138346	Subarray requested	NONE	NONE
[deg] Pointing Dec	-7.491096	-7.484266670857615	Alternating exposures requested	N	N
[deg] Pointing Roll	343.497134	343.6572550248663	[s] Primary exposure time	0.000000	3.1
[mm] SIM focus pos	-0.684267	-0.6828225247311905			
[mm] SIM defocus	0	0.001444936568705701			
[mm] SIM translation stage pos	-190.132523	-190.1400660498719			
[mm] SIM translation stage offset	0	0.00754346686406393			
[s] Observation start time (MET)	372551072.184000	372549727.40188			
Observation start date	2009-10-21T22:23:26	2009-10-21T22:02:07			
[s] Observation end time (MET)	372572072.184000	372573390.04057			
Observation end date	2009-10-22T04:13:26	2009-10-22T04:36:30			
Read mode	TIMED	TIMED			

2.3 Aspect



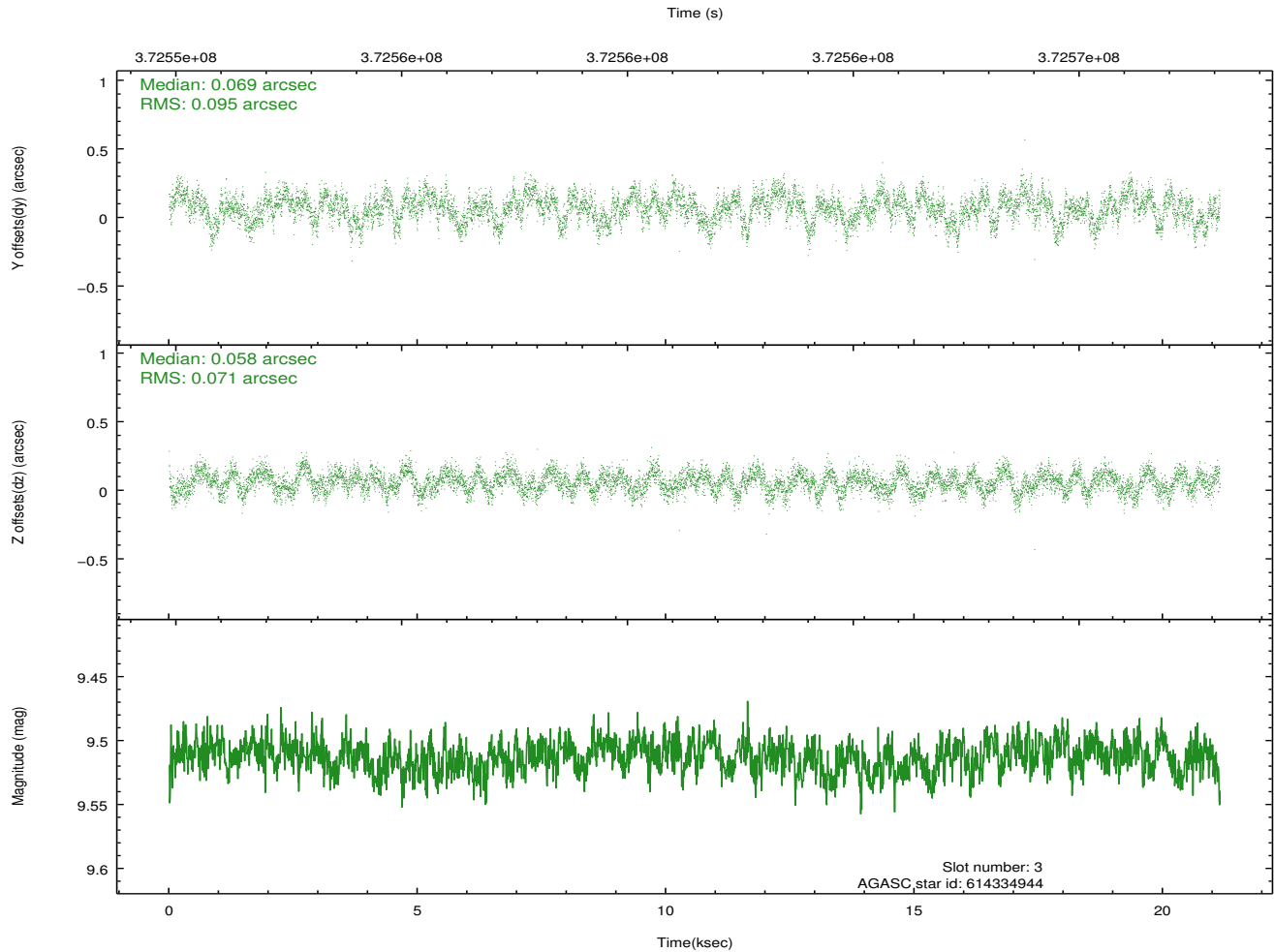
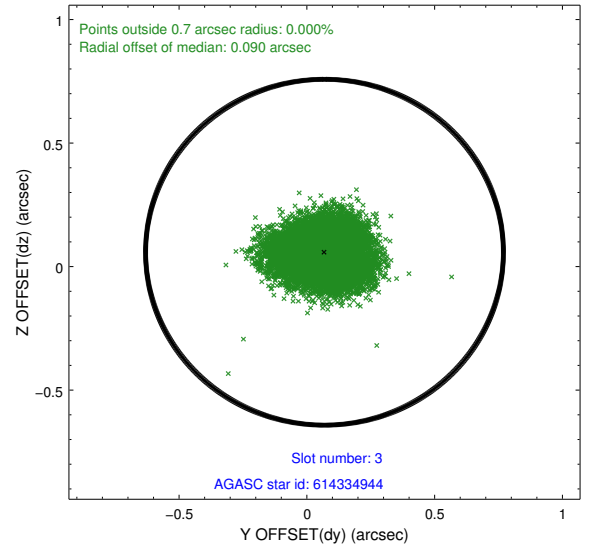
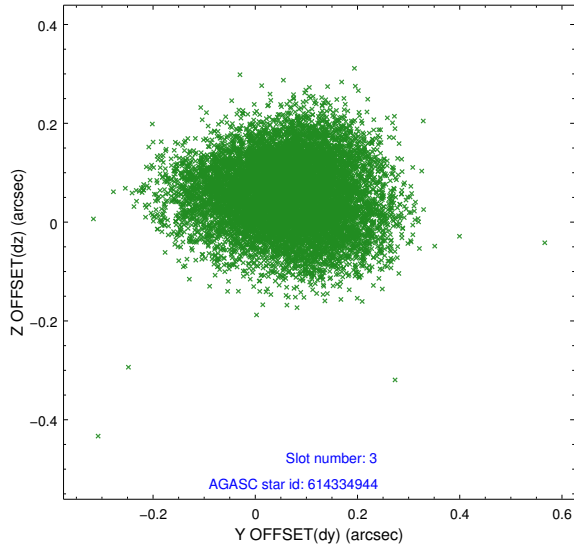


Slot Statistics

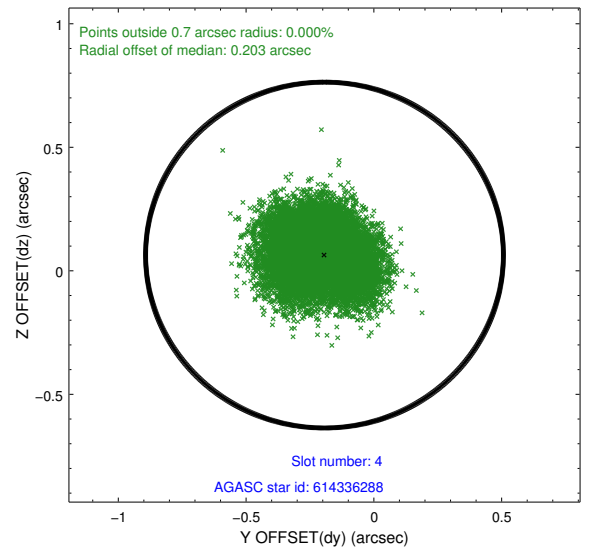
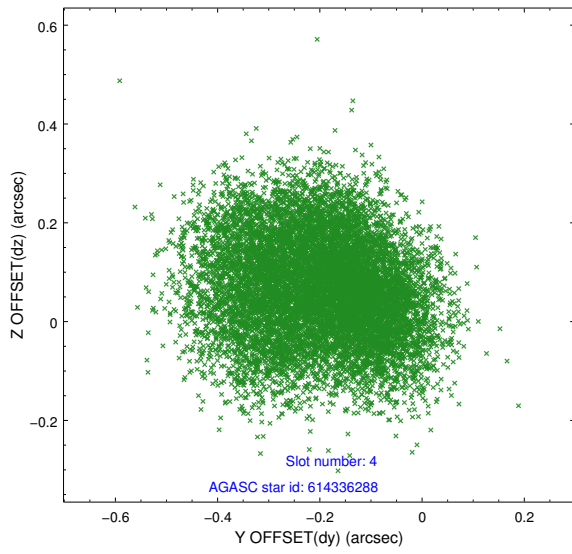
slot	status	id	mag	n_pts	med_dy	med_dz	dr1	dr2	ra	dec	mean_y	mean_z
0	FID	ACIS-S-2	6.88	5158	-0.064	-0.024	0.014	0.032	0.000000	0.000000	-767.10	-1737.61
1	FID	ACIS-S-4	6.96	5158	0.197	0.037	0.007	0.013	0.000000	0.000000	2146.36	170.76
2	FID	ACIS-S-5	6.99	5158	-0.166	-0.006	0.013	0.031	0.000000	0.000000	-1819.83	164.58
3	GUIDE	614334944	9.51	10293	0.069	0.058	0.128	0.203	23.690994	-7.375009	2017.50	1032.25
4	GUIDE	614336288	9.75	10280	-0.193	0.064	0.167	0.256	23.348285	-7.191979	657.85	1317.93
5	GUIDE	691274416	9.71	10304	0.102	0.082	0.235	0.341	22.547044	-7.925039	-1333.29	-2025.76
6	GUIDE	691681936	9.38	10297	-0.048	0.008	0.112	0.179	23.217692	-8.149392	1188.15	-2119.91
7	GUIDE	691683832	8.43	10311	0.093	-0.210	0.084	0.137	23.516842	-7.565326	1615.34	198.66

2.4 Star Slots

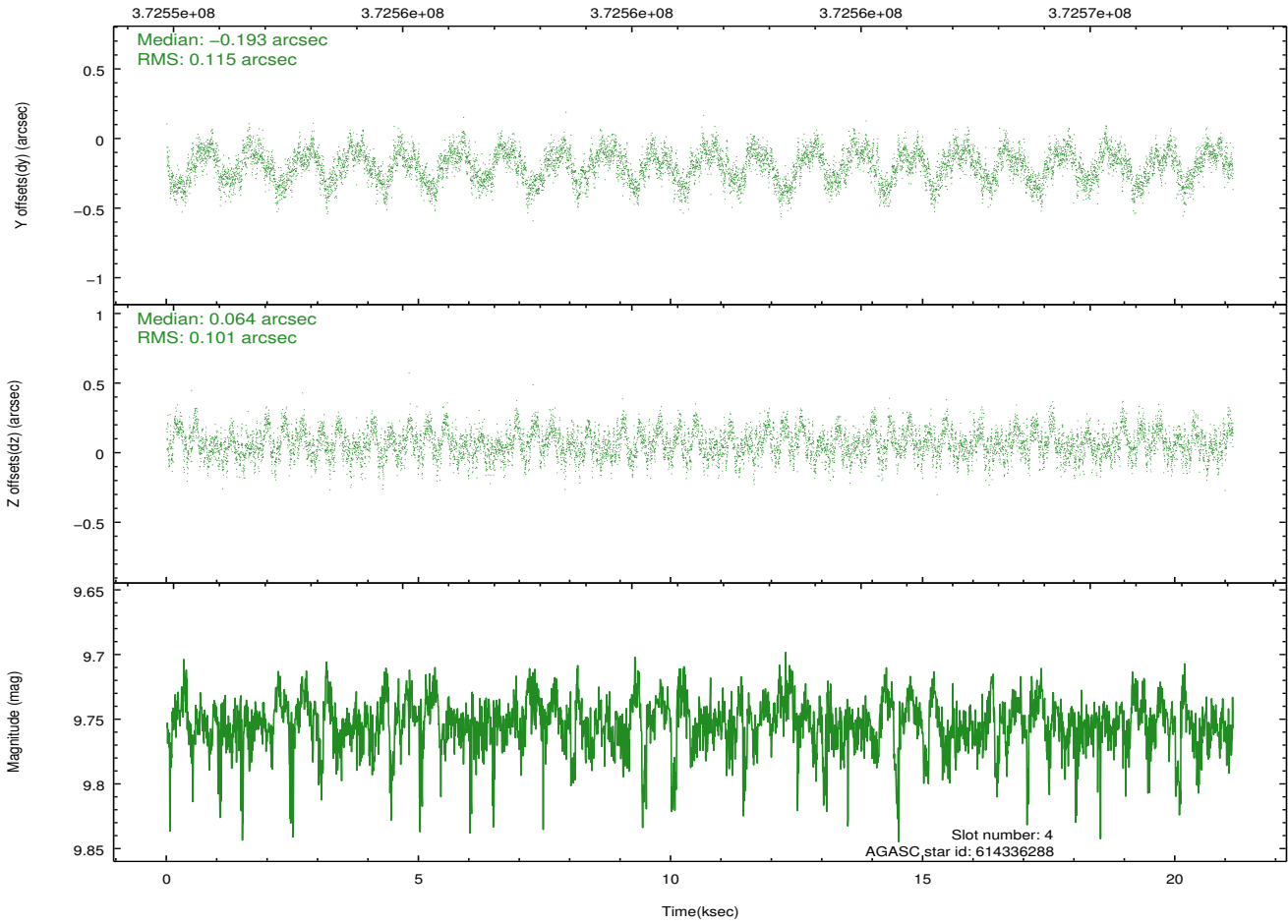
2.4.1 Slot 3



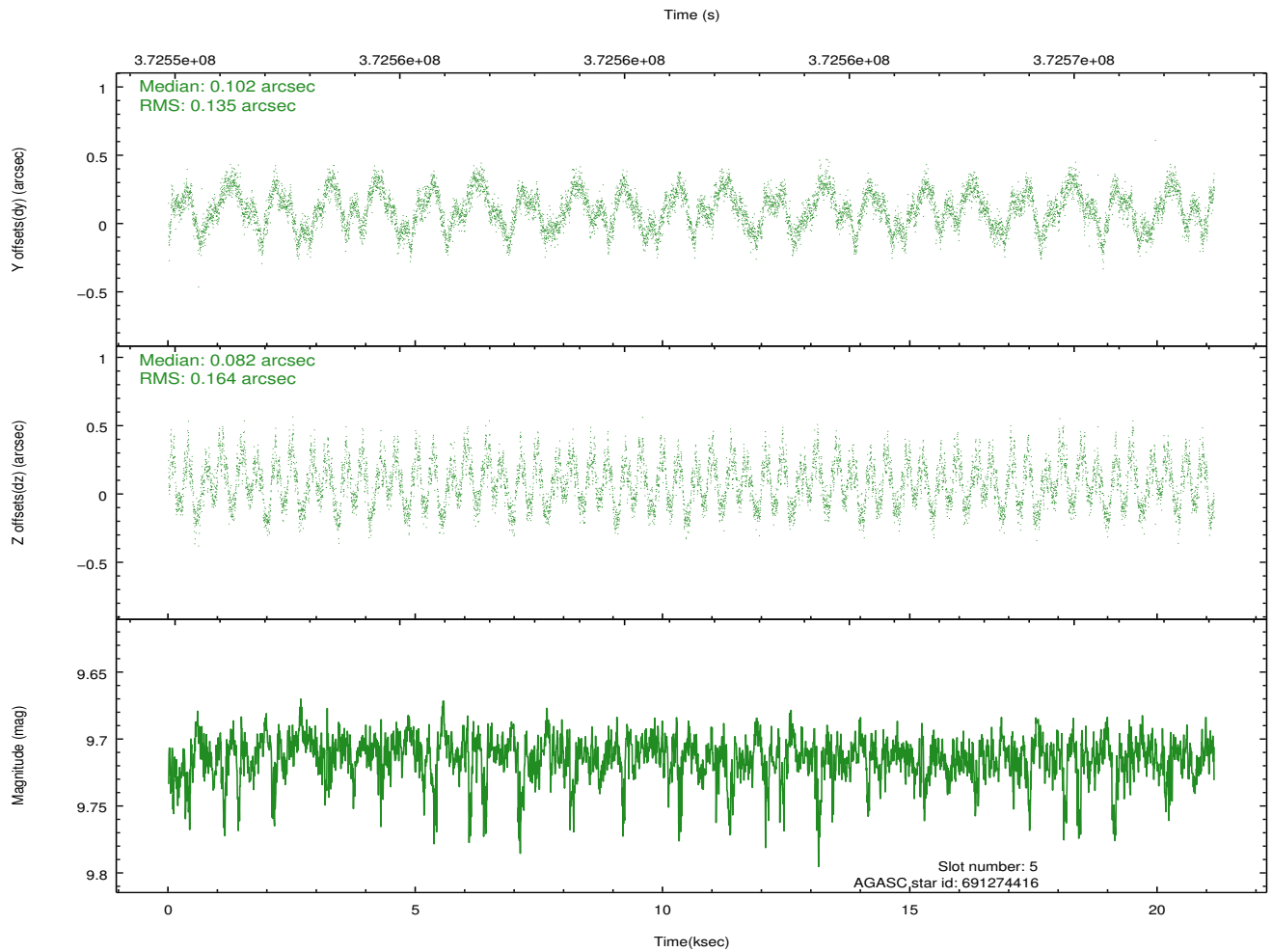
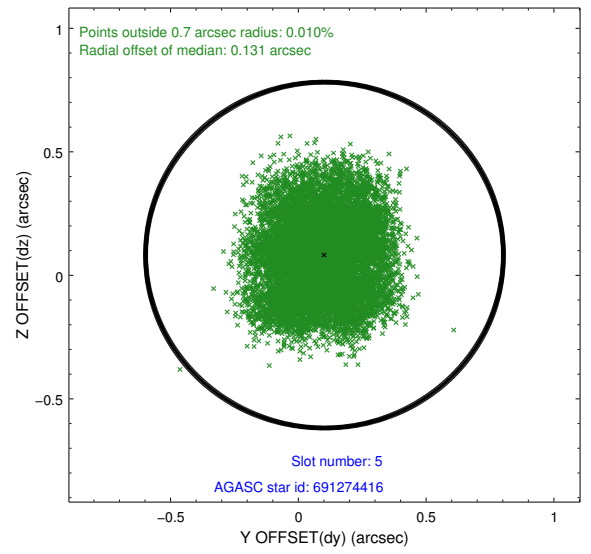
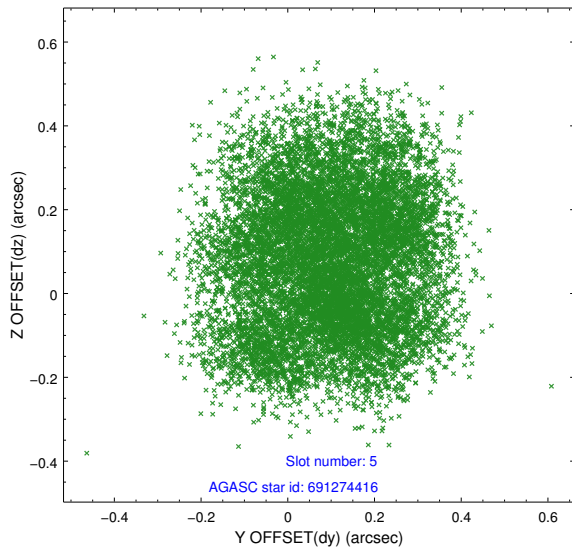
2.4.2 Slot 4



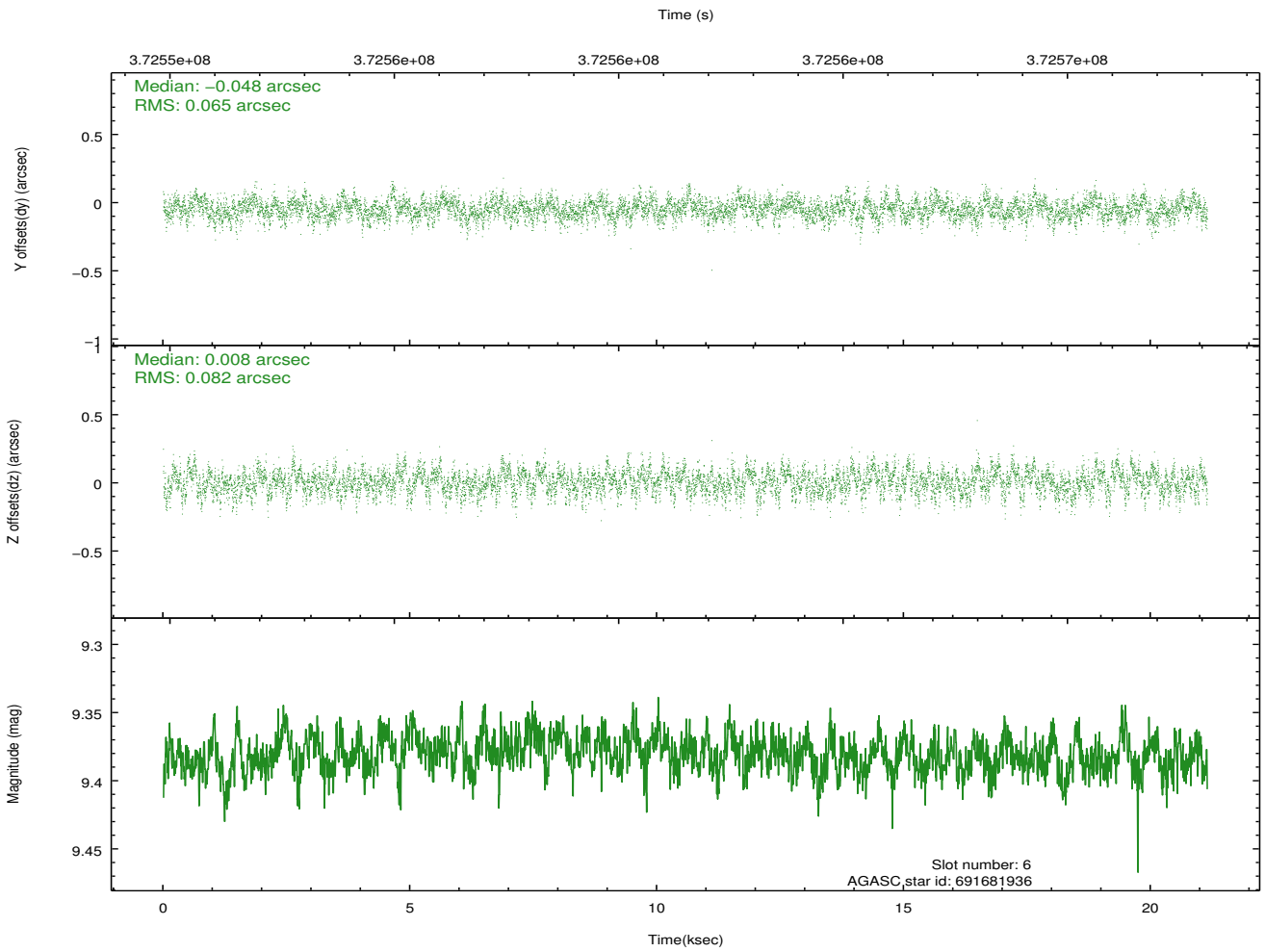
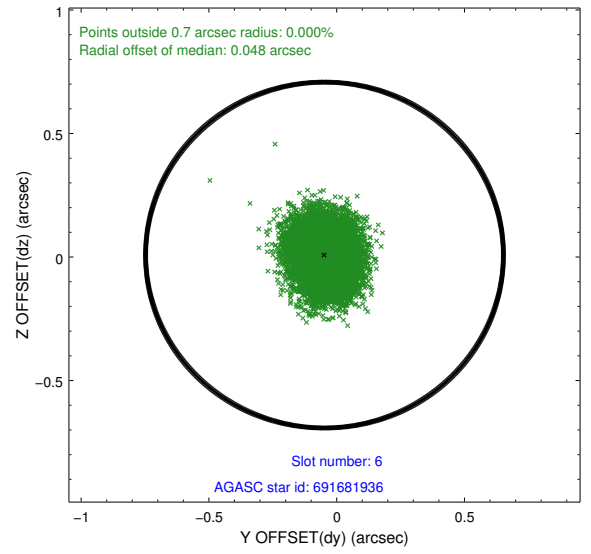
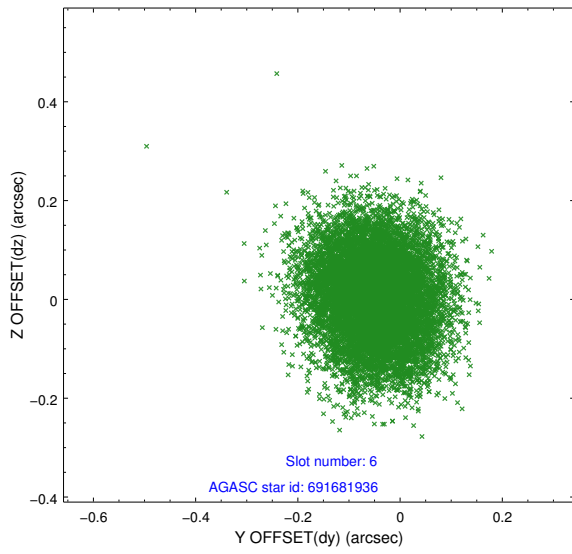
Time (s)



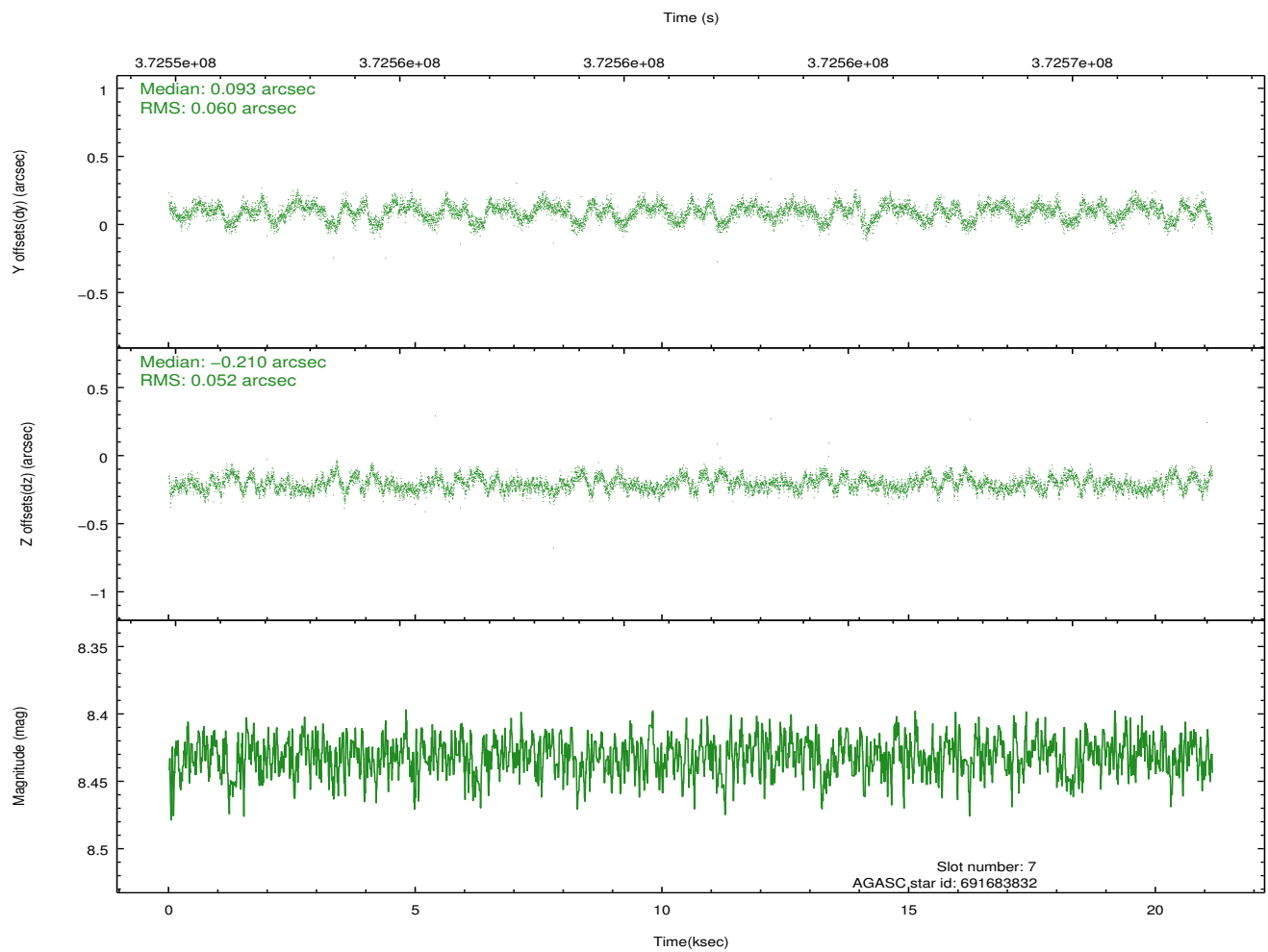
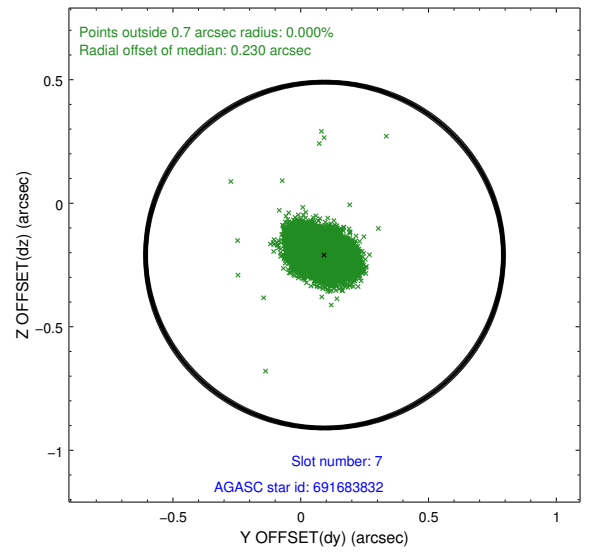
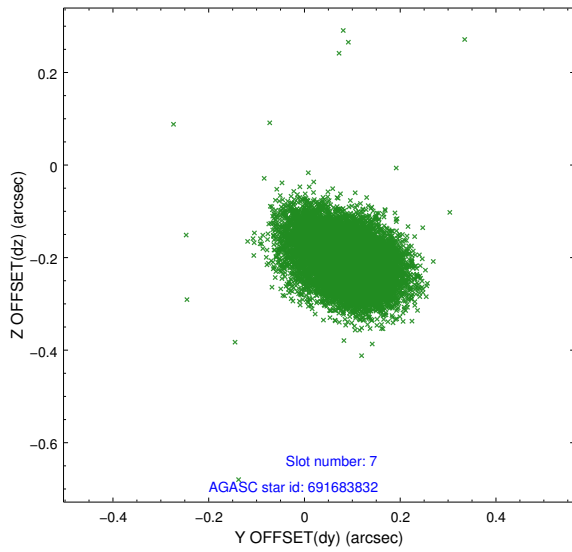
2.4.3 Slot 5



2.4.4 Slot 6

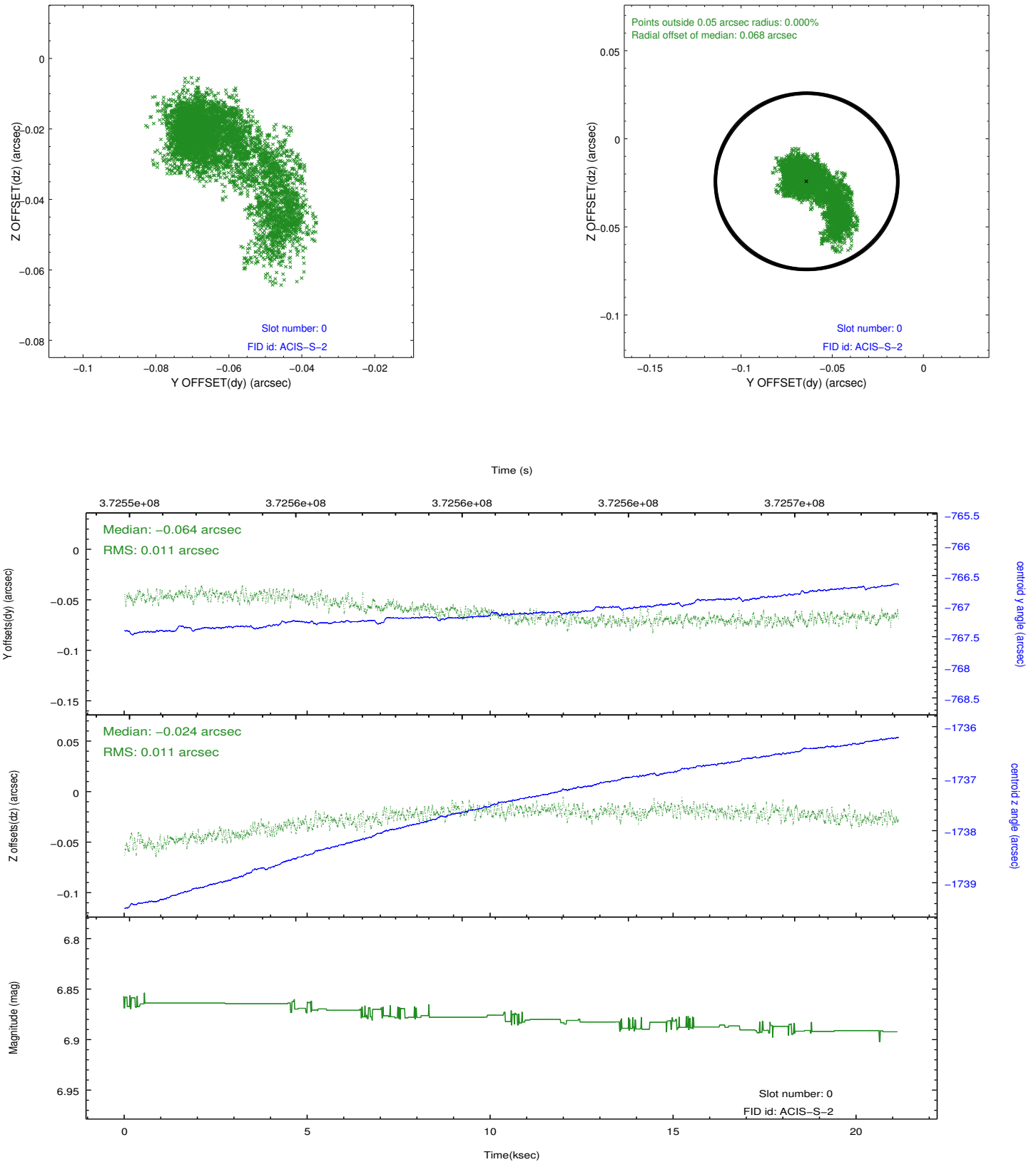


2.4.5 Slot 7

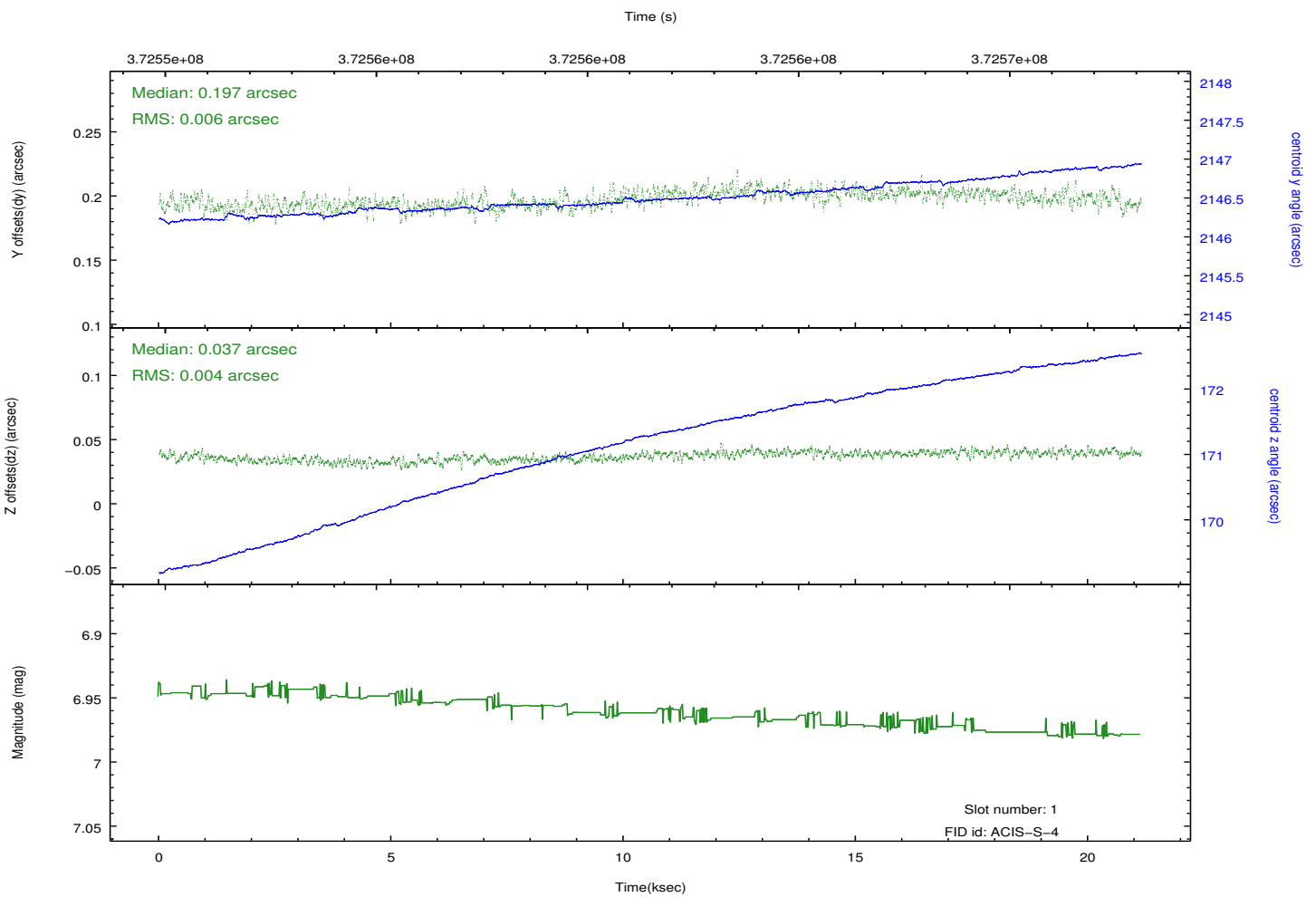
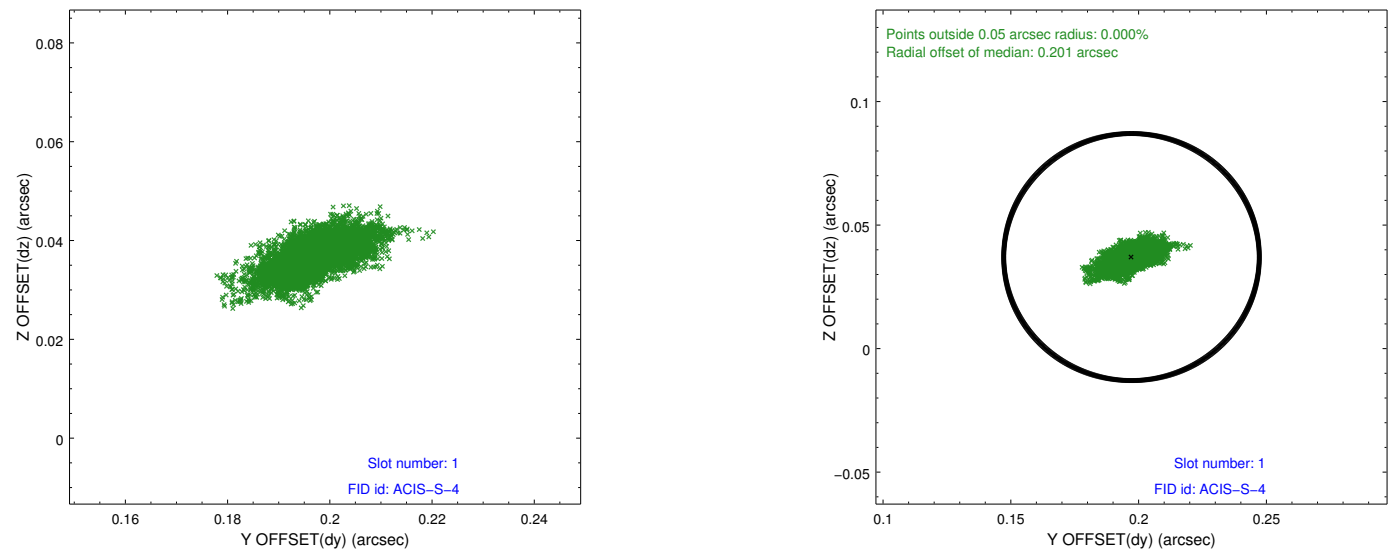


2.5 FID Slots

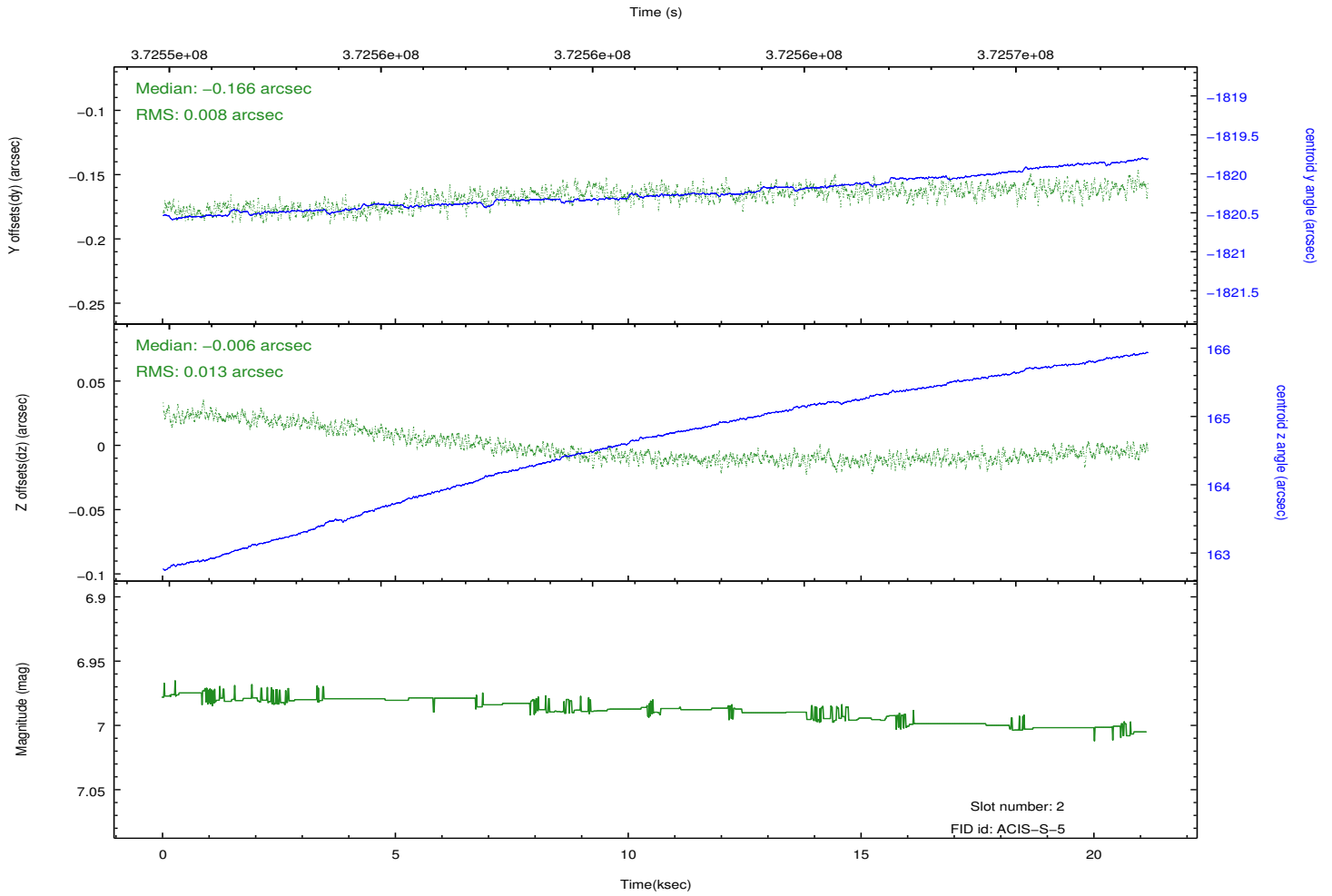
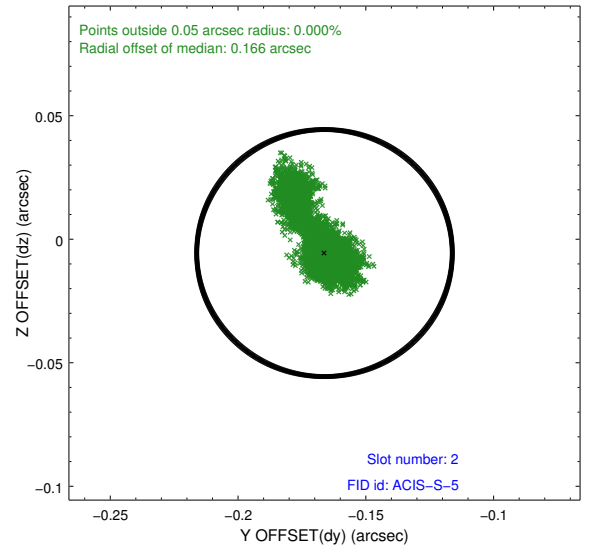
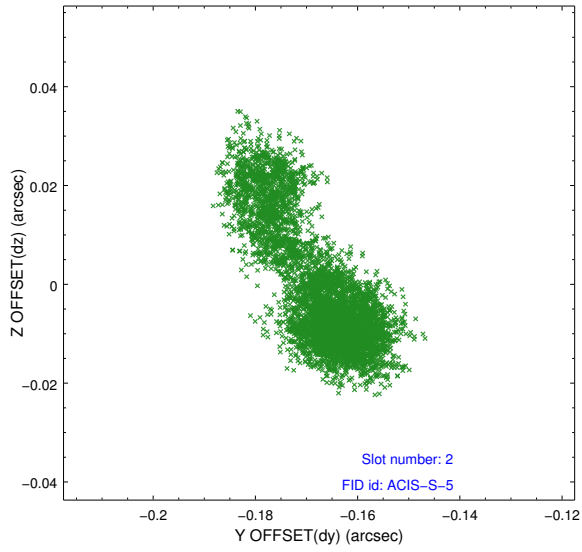
2.5.1 Slot 0



2.5.2 Slot 1



2.5.3 Slot 2



A Summary

A.1 Status

V&V Scientist	Jen Lauer
V&V Date (YYYY-MM-DD)	2012.06.19
V&V Edition	1
V&V Disposition and Status	OK
V&V Charge Time	21.138900162578

A.2 Comments