

V&V Reference Report

L2 ASCDS Version : 8.4.5

Observation 11551 - L2 Version 2
Chandra X-Ray Center

L2 Processing Date : Jun 29 2012

Contents

1	Front	2
2	OBI	3
2.1	OBI	3
2.1.1	Images	3
2.1.2	Bias	3
2.1.3	Parameters	4
2.1.4	Events	4
2.2	Compared Parameters	5
2.3	Aspect	6
2.4	Star Slots	9
2.4.1	Slot 3	9
2.4.2	Slot 4	10
2.4.3	Slot 5	11
2.4.4	Slot 6	12
2.4.5	Slot 7	13
2.5	FID Slots	14
2.5.1	Slot 0	14
2.5.2	Slot 1	15
2.5.3	Slot 2	16
A	Summary	17
A.1	Status	17
A.2	Comments	17

1 Front

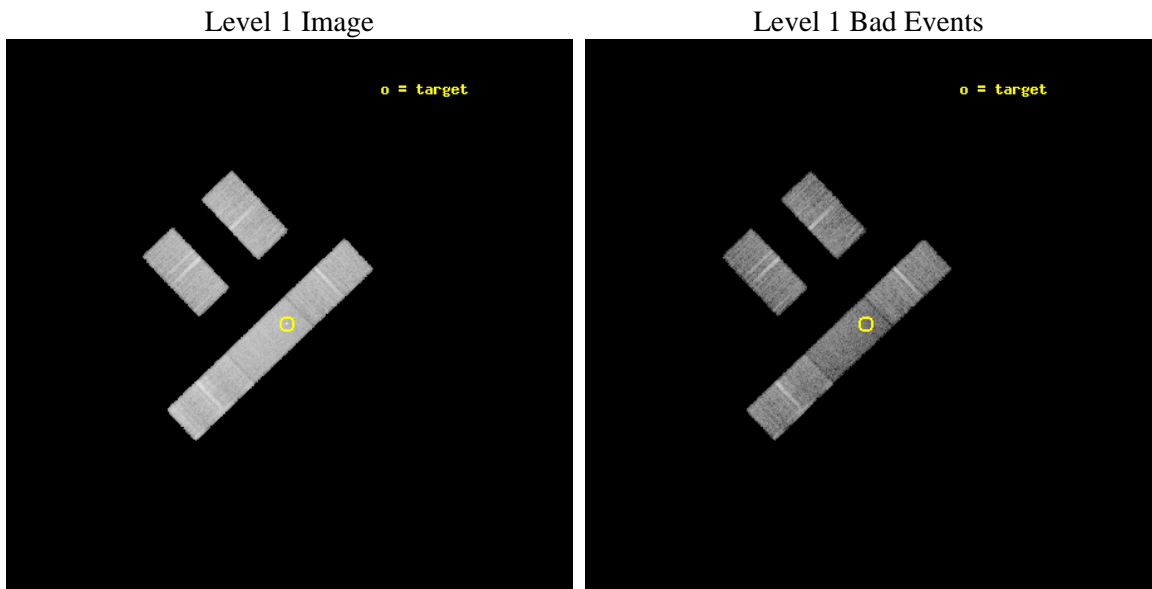
seq_num	702137	Sequence number
obs_id	11551	Observation id
title	The Size of Quasar Non-Thermal/X-ray Emission Regions	Proposal tit
observer	Prof. Christopher Kochanek	Principal investigator
object	HE0435-1223	Source name
dtycycle	0	
cycle	P	events from which exps? Prim/Second/Both
ra_targ	69.562083	Observer's specified target RA [deg]
dec_targ	-12.287333	Observer's specified target Dec [deg]
ra_nom	69.55724512401	Nominal RA [deg]
dec_nom	-12.286307602522	Nominal Dec [deg]
roll_nom	136.36656308046	Nominal Roll [deg]
revision	2	Processing version of data
ontime	13064.499908447	Sum of GTIs [s]
liveltime	12756.541977416	Livetime [s]
ontime2	13062.616275787	Sum of GTIs [s]
ontime3	13064.439345956	Sum of GTIs [s]
ontime6	13064.480385959	Sum of GTIs [s]
ontime7	13064.499908447	Sum of GTIs [s]
ontime8	13062.657315791	Sum of GTIs [s]
l2events	48601	Number of level 2 events



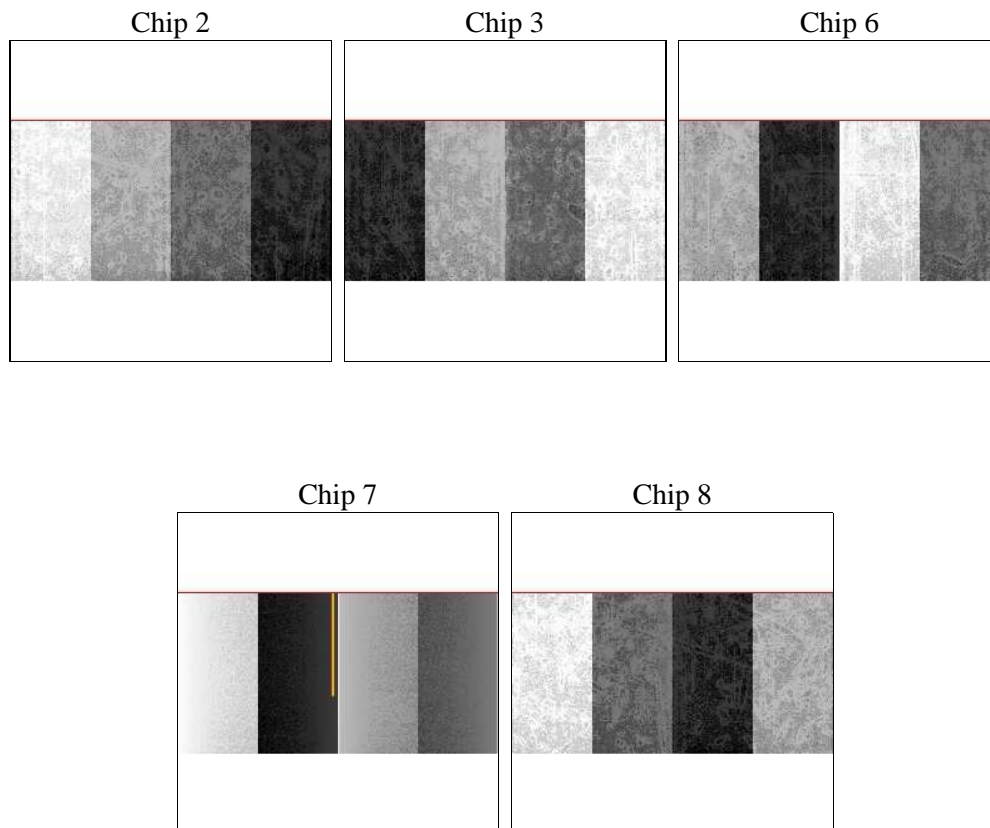
2 OBI

2.1 OBI

2.1.1 Images



2.1.2 Bias



2.1.3 Parameters

obi_num	0	Obi number	sched_exp_time	13000.000000	[s] Scheduled observation exposure time
ascdsver	8.4.5	Processing system revision	ontime	13064.499908447	Sum of GTIs [s]
caldbver	4.5.0	 	ontime2	13062.616275787	Sum of GTIs [s]
date	2012-06-29T11:21:35	Date and time of file creation	ontime3	13064.439345956	Sum of GTIs [s]
revision	2	Processing version of data	ontime6	13064.480385959	Sum of GTIs [s]
			ontime7	13064.499908447	Sum of GTIs [s]
			ontime8	13062.657315791	Sum of GTIs [s]
			l1events	294383	Number of level 1 events

2.1.4 Events

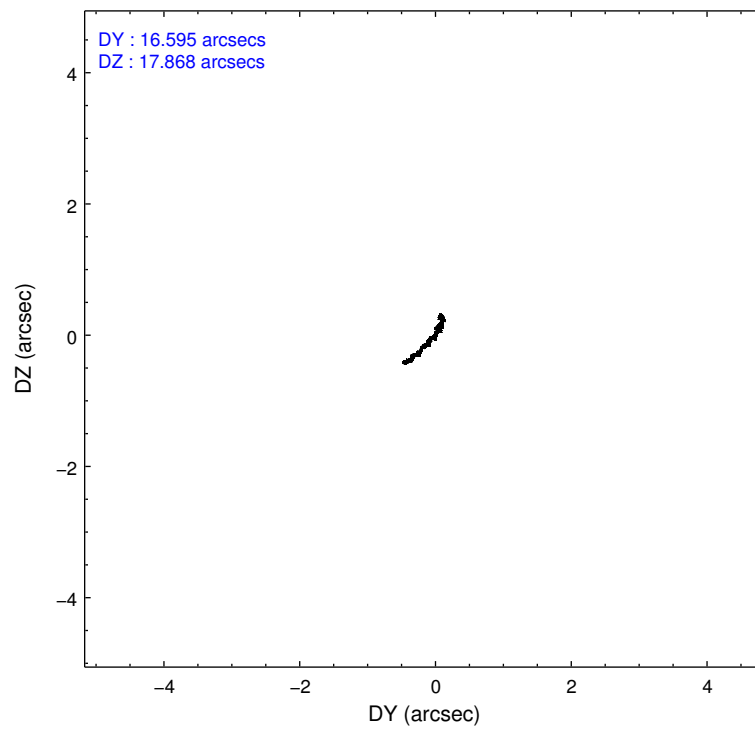
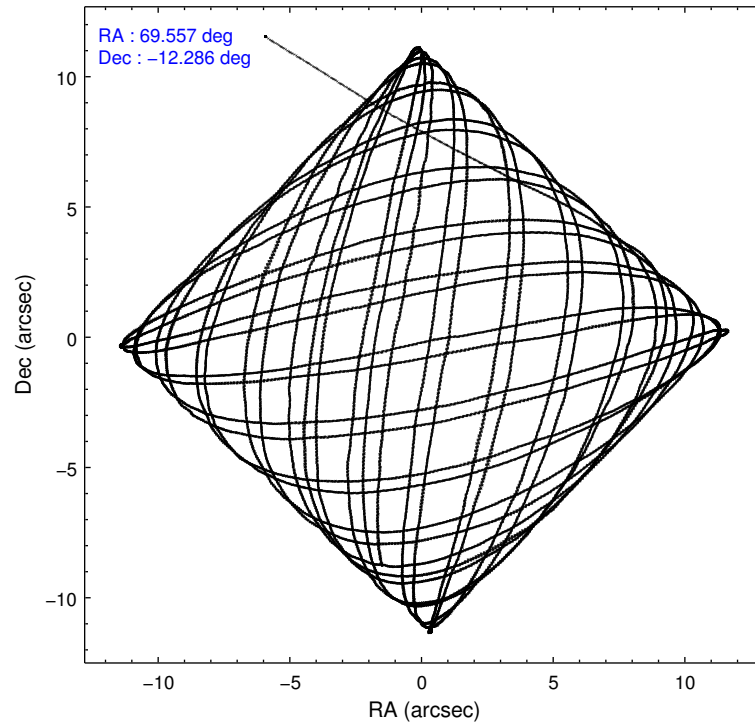
	ccd 2	ccd 3	ccd 6	ccd 7	ccd 8
level 1 events	52692	52515	55047	62739	71390
rejected events	47057	47155	49091	33609	53234
rejected %	89%	89%	89%	53%	74%

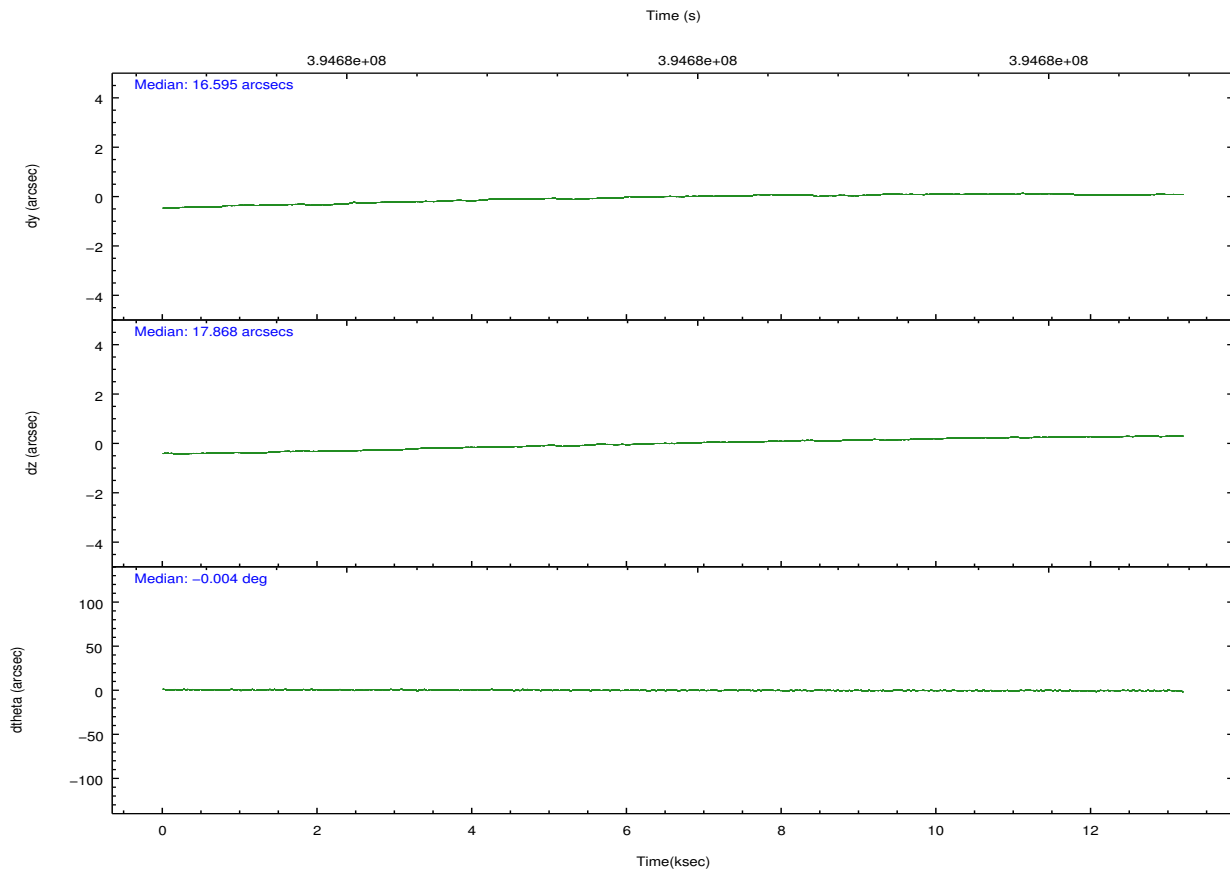
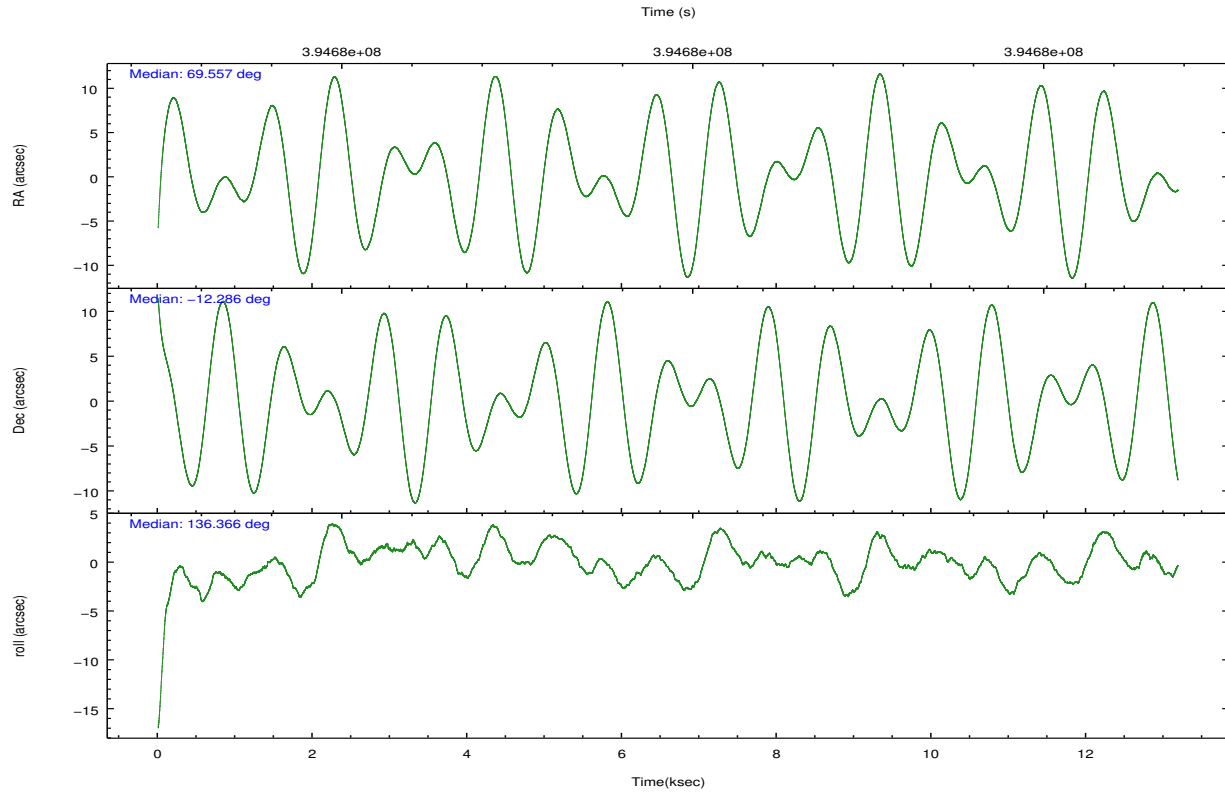
	ccd 2	ccd 3	ccd 6	ccd 7	ccd 8
grade 0 events	1854	1767	1899	2802	5186
	3%	3%	3%	4%	7%
grade 1 events	25	33	21	99	41
	0%	0%	0%	0%	0%
grade 2 events	1255	1129	1301	6028	4206
	2%	2%	2%	9%	5%
grade 3 events	723	717	763	3016	1959
	1%	1%	1%	4%	2%
grade 4 events	756	703	701	2939	1892
	1%	1%	1%	4%	2%
grade 5 events	1830	2337	2332	6643	3272
	3%	4%	4%	10%	4%
grade 6 events	1048	1044	1292	14354	4920
	1%	1%	2%	22%	6%
grade 7 events	45201	44785	46738	26858	49914
	85%	85%	84%	42%	69%

2.2 Compared Parameters

Parameter	Planned	Actual	Parameter	Planned	Actual
Instrument	ACIS	ACIS	Obspar format version number	7	7
Detector	ACIS-23678	ACIS-23678	Obspar file type	PREDICTED	ACTUAL
Grating	NONE	NONE	Obspar update status	NONE	UPDATED
Data mode	VFAINT	VFAINT	CCD I0 on	N	N
Observation mode	POINTING	POINTING	CCD I1 on	N	N
[deg] Pointing RA	69.584509	69.55724512400992	CCD I2 on	O4	Y
[deg] Pointing Dec	-12.292409	-12.28630760252205	CCD I3 on	O3	Y
[deg] Pointing Roll	136.215744	136.366563080463	CCD S0 on	N	N
[mm] SIM focus pos	-0.684267	-0.6828225247311905	CCD S1 on	N	N
[mm] SIM defocus	0	0.001444936568705701	CCD S2 on	O1	Y
[mm] SIM translation stage pos	-190.132523	-190.1425803651734	CCD S3 on	Y	Y
[mm] SIM translation stage offset	0	0.01005778216563158	CCD S4 on	O2	Y
[s] Observation start time (MET)	394673250.184000	394672377.32359	CCD S5 on	N	N
Observation start date	2010-07-04T23:26:24	2010-07-04T23:12:57	Number of optional ACIS chips dropped	0	0
[s] Observation end time (MET)	394686250.184000	394686716.04932	On-chip summing requested	N	N
Observation end date	2010-07-05T03:03:04	2010-07-05T03:11:56	Subarray requested	CUSTOM	1/2
Read mode	TIMED	TIMED	Subarray start row	257	257
			Subarray row count	512	512
			Alternating exposures requested	N	N
			[s] Primary exposure time	0.000000	1.7

2.3 Aspect



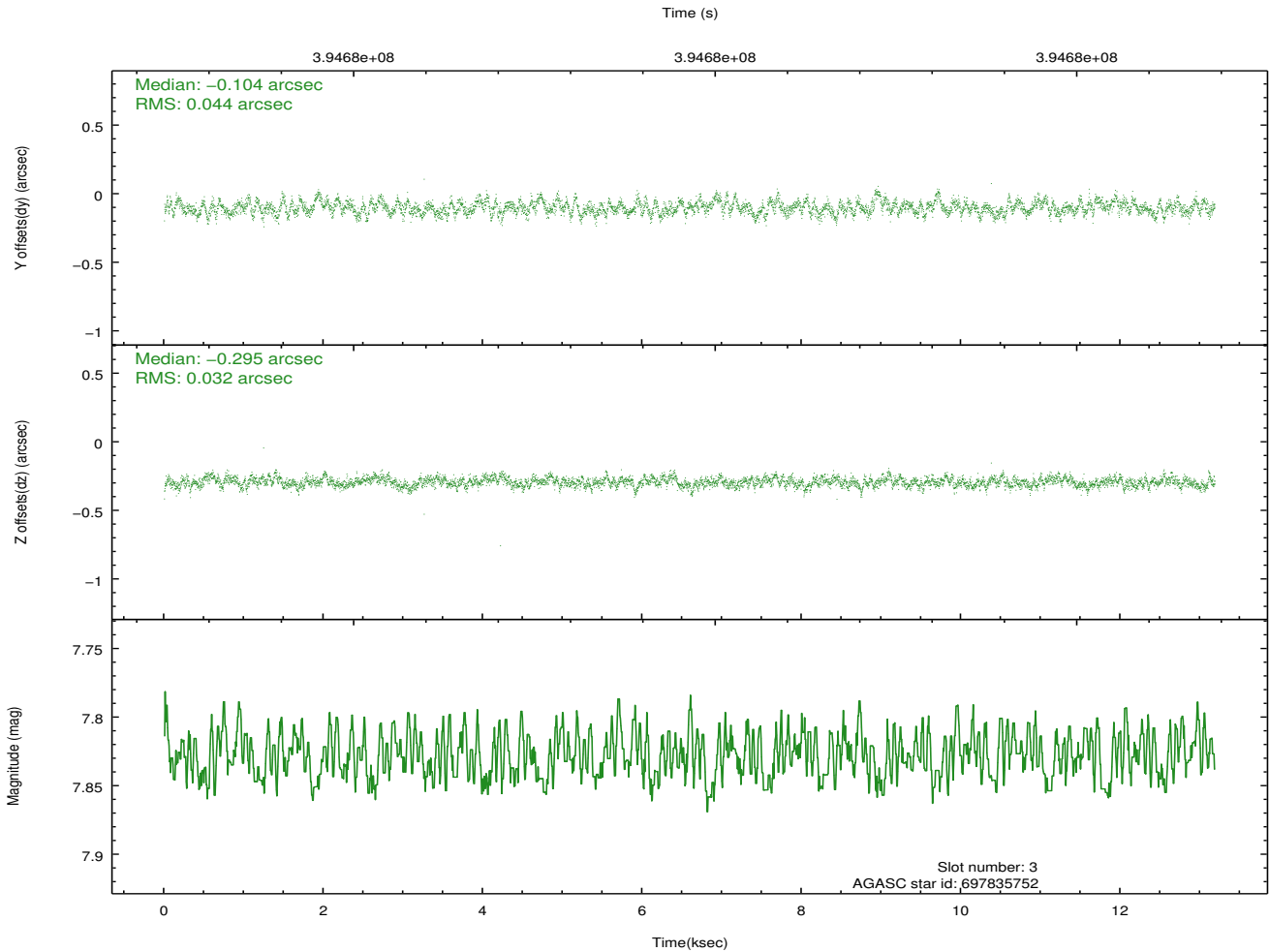
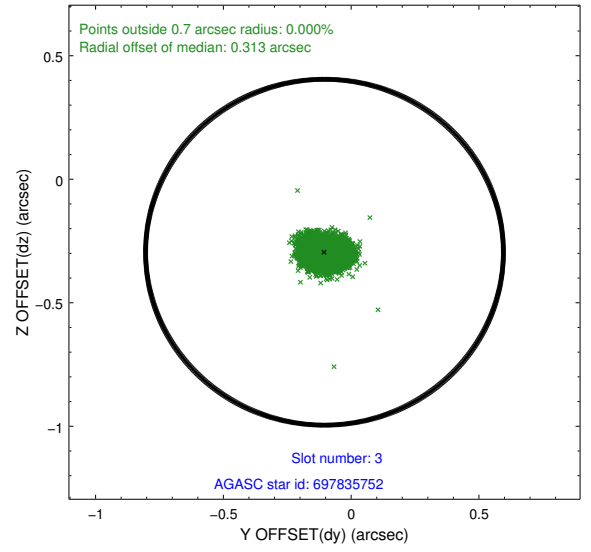
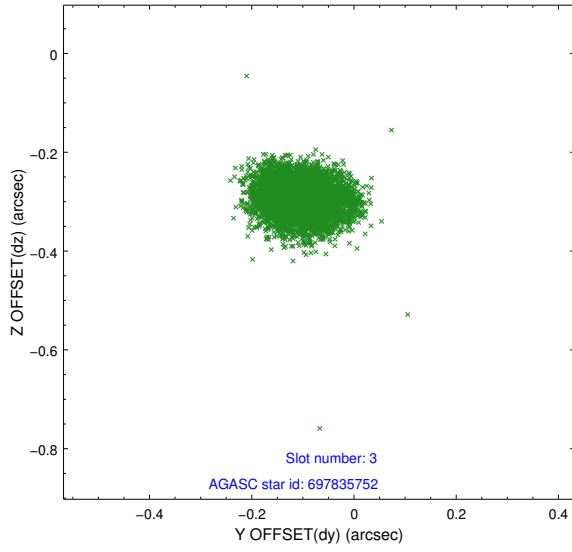


Slot Statistics

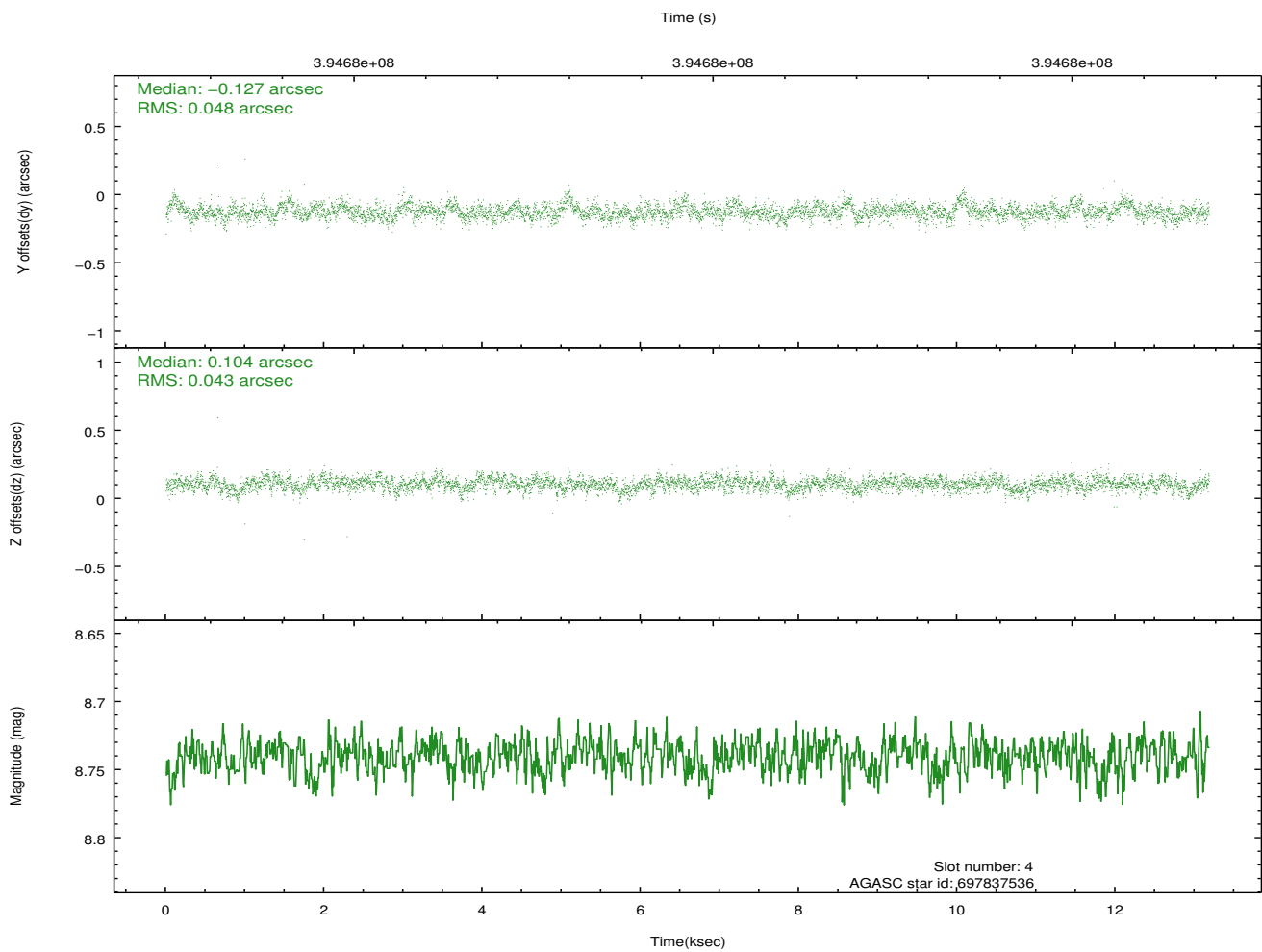
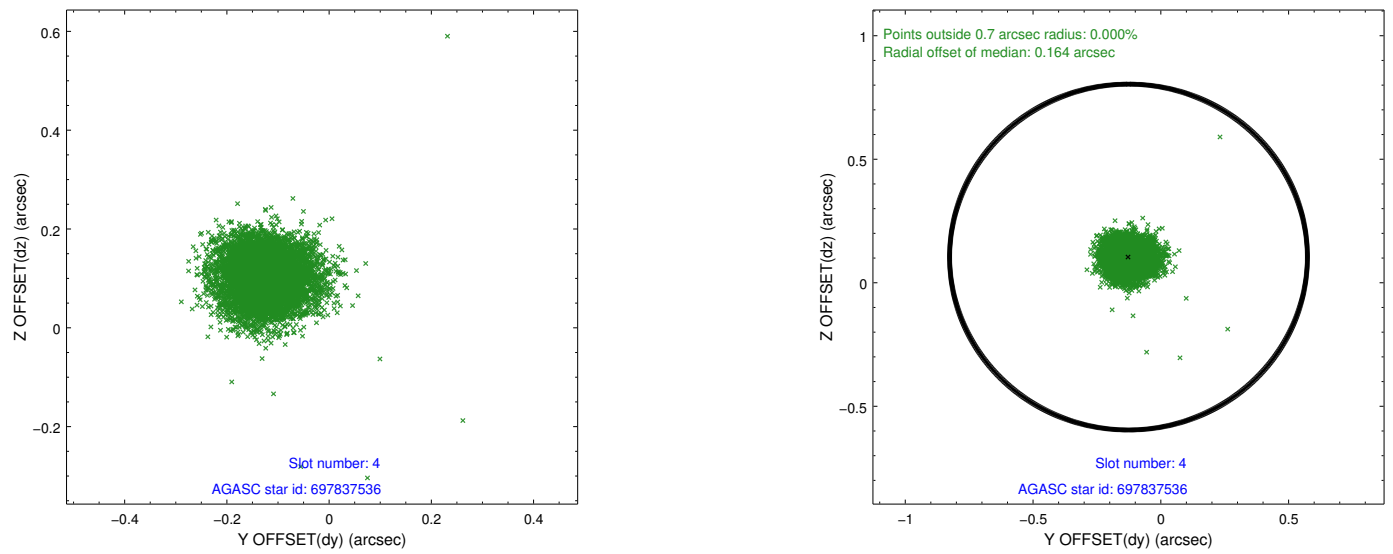
slot	status	id	mag	n_pts	med_dy	med_dz	dr1	dr2	ra	dec	mean_y	mean_z
0	FID	ACIS-S-1	6.96	3216	0.077	-0.030	0.012	0.020	0.000000	0.000000	926.54	-1734.93
1	FID	ACIS-S-4	6.96	3216	0.084	-0.013	0.010	0.017	0.000000	0.000000	2144.19	168.84
2	FID	ACIS-S-5	7.00	3216	-0.188	0.054	0.008	0.016	0.000000	0.000000	-1822.09	162.99
3	GUIDE	697835752	7.83	6428	-0.104	-0.295	0.057	0.096	69.312835	-12.164170	1009.31	328.19
4	GUIDE	697837536	8.74	6425	-0.127	0.104	0.067	0.111	69.361544	-11.866636	1627.90	-562.38
5	GUIDE	697837912	9.33	6427	0.185	0.007	0.106	0.176	70.091872	-12.106315	-826.12	-1718.02
6	GUIDE	697841640	8.36	6424	-0.167	0.078	0.077	0.119	69.473321	-11.880587	1308.67	-799.15
7	GUIDE	698221200	9.40	6430	0.210	0.106	0.088	0.144	69.952855	-12.530929	-1528.62	-275.18

2.4 Star Slots

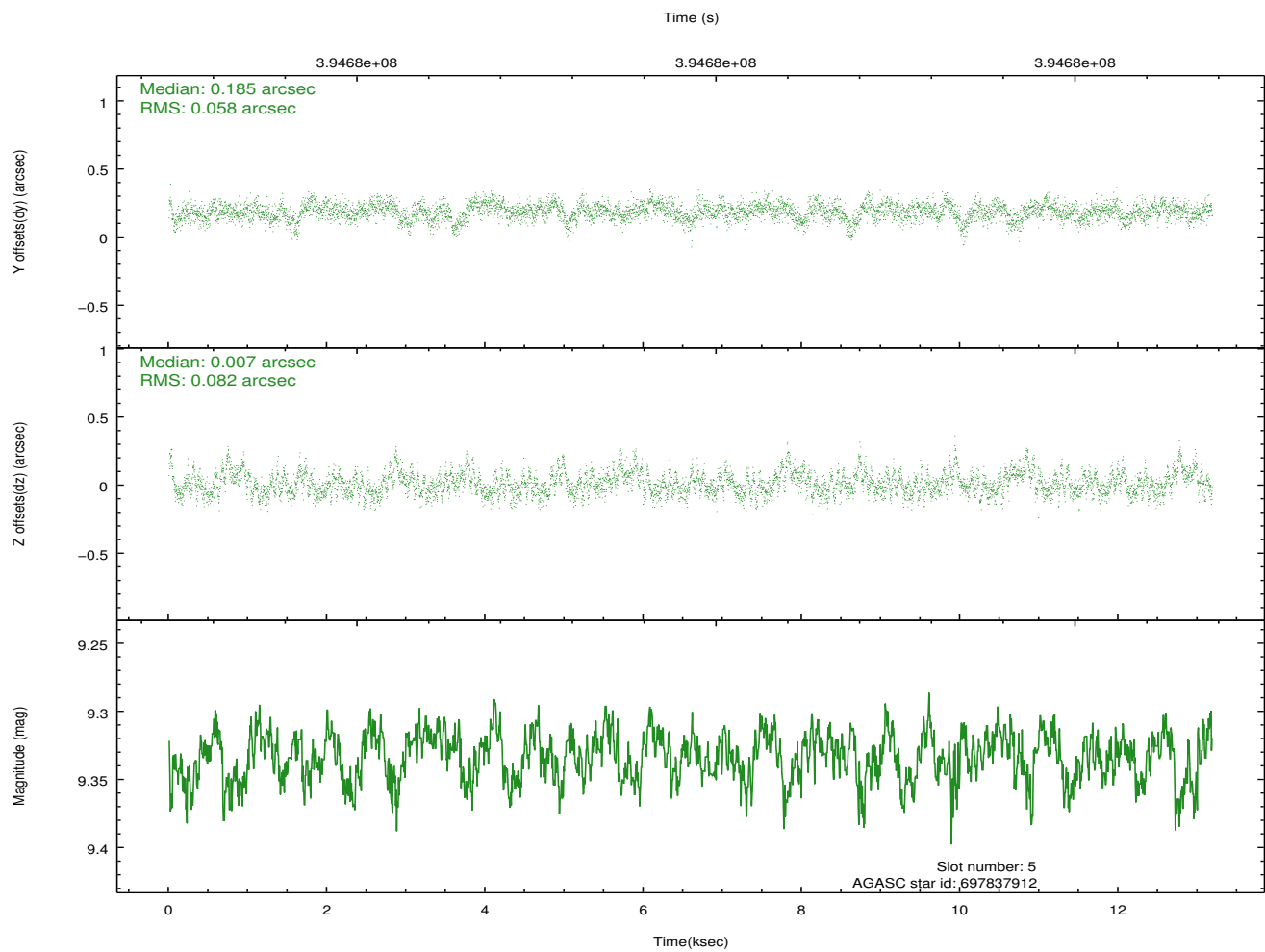
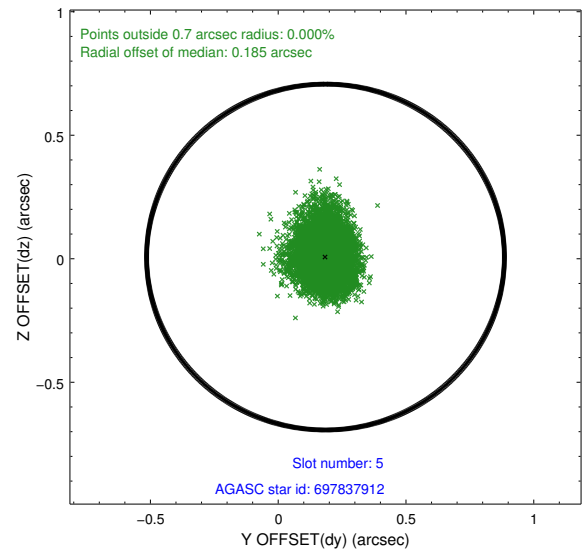
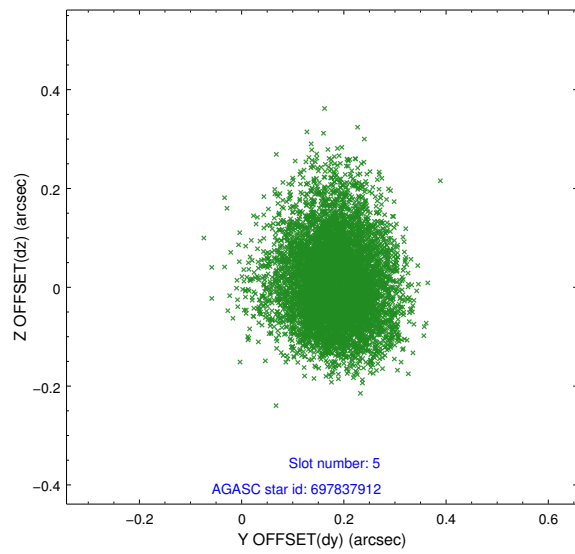
2.4.1 Slot 3



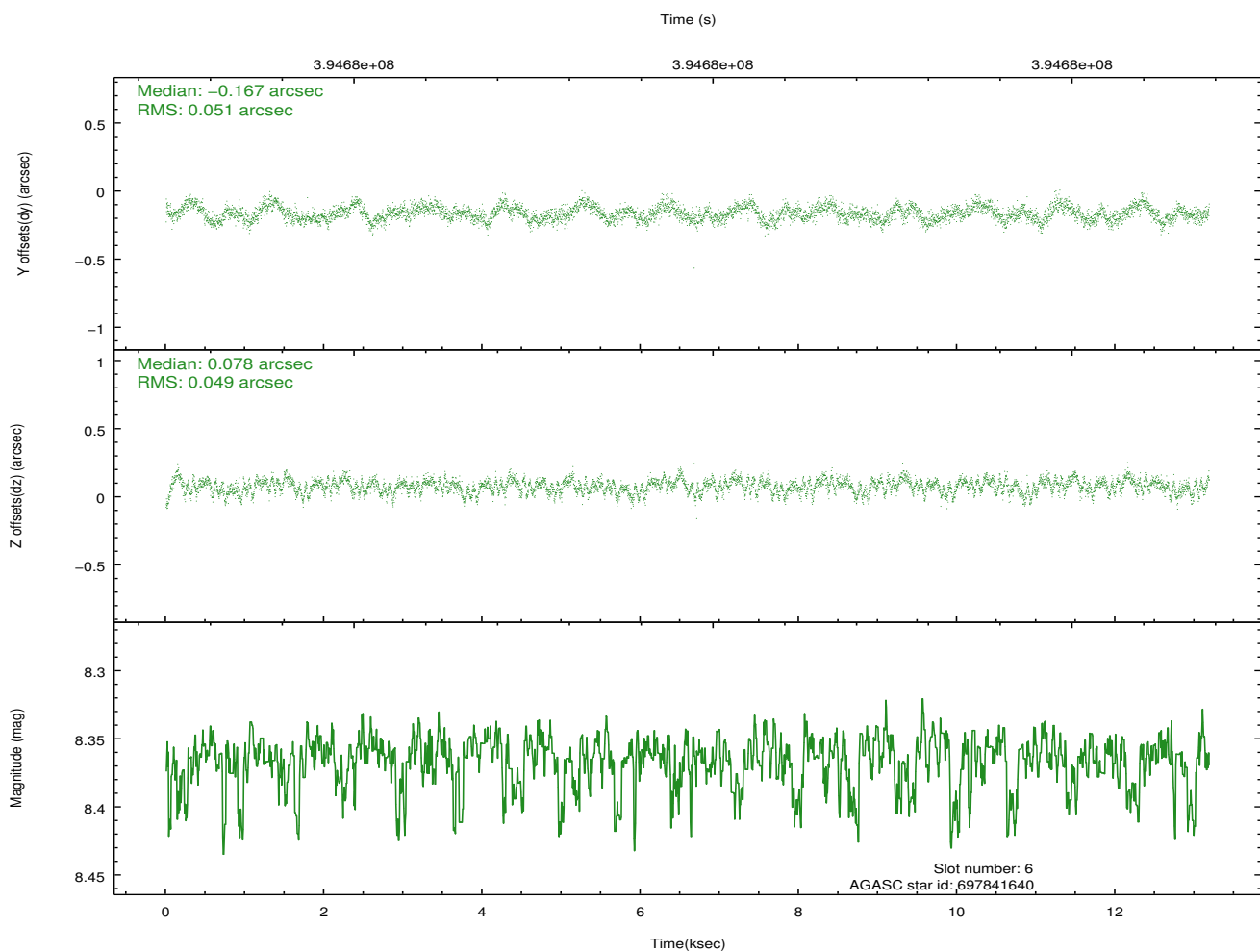
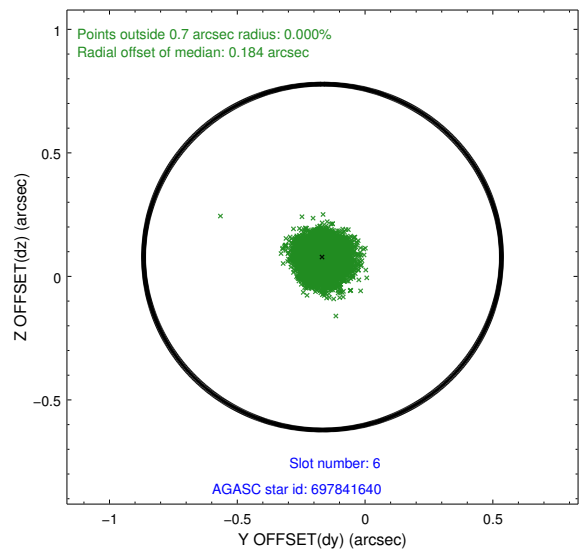
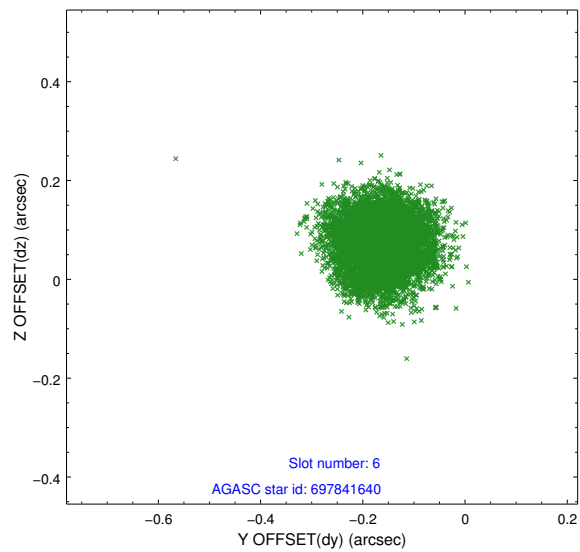
2.4.2 Slot 4



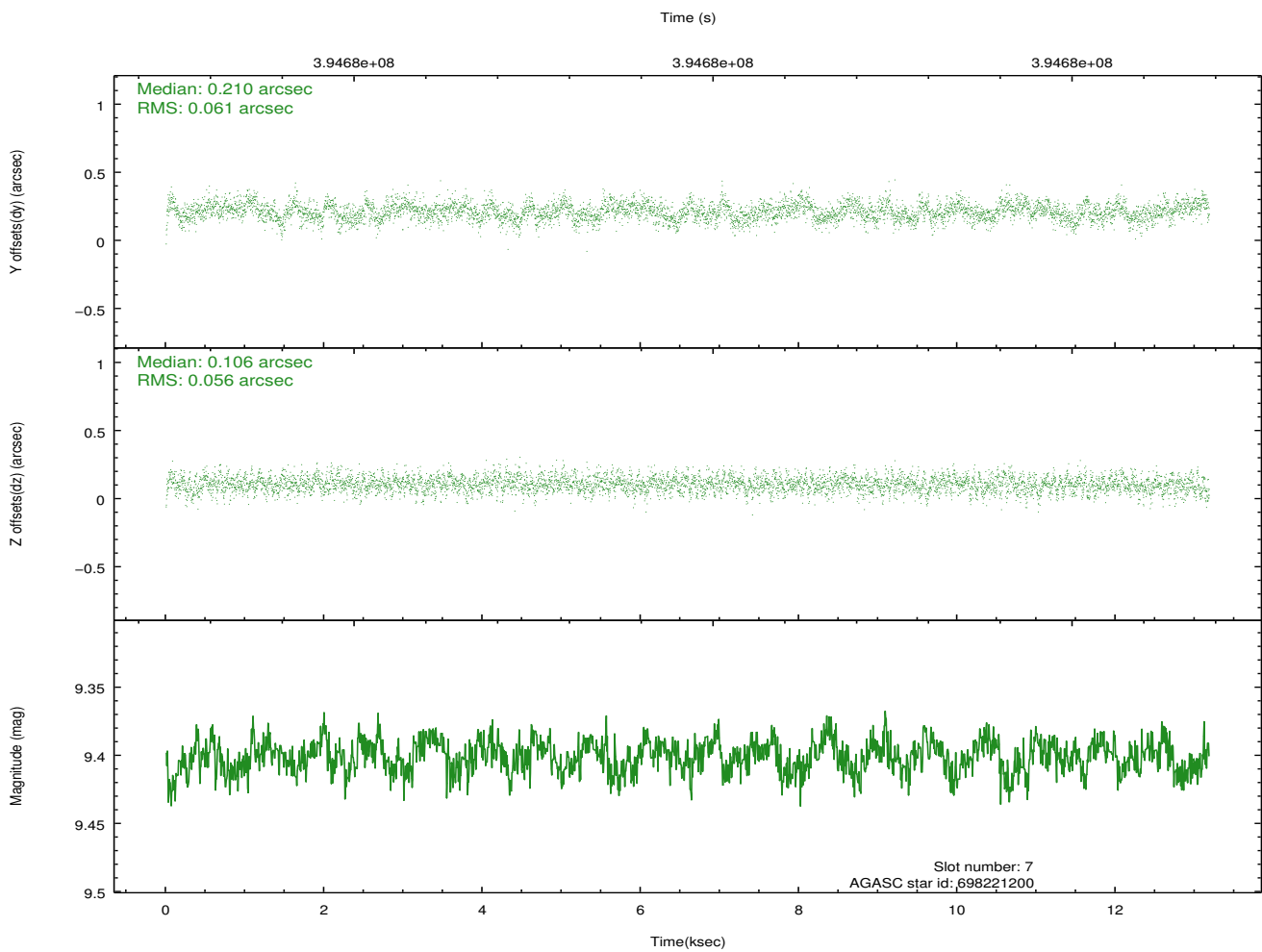
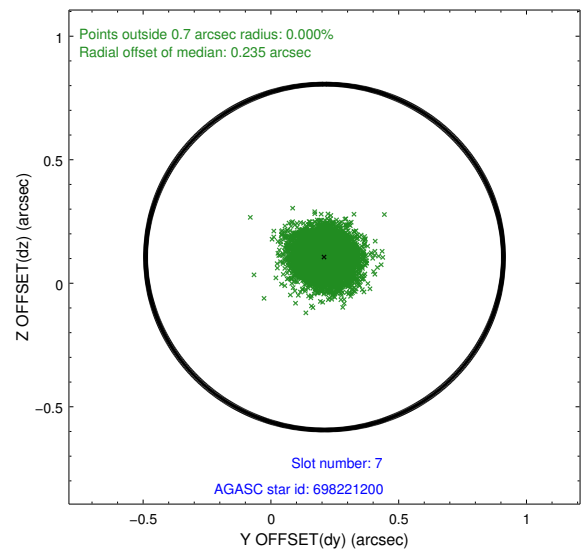
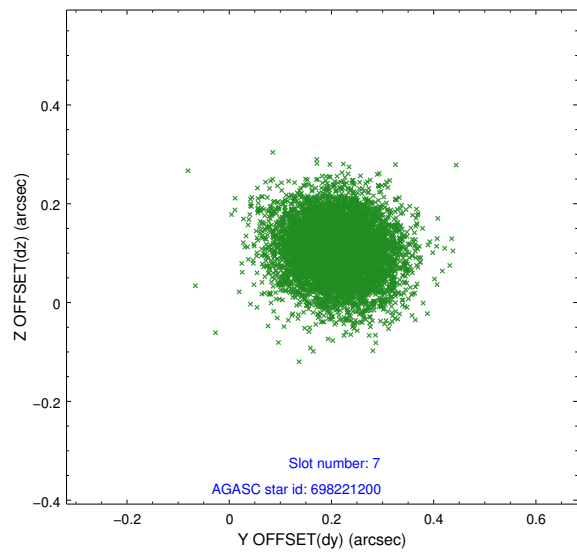
2.4.3 Slot 5



2.4.4 Slot 6

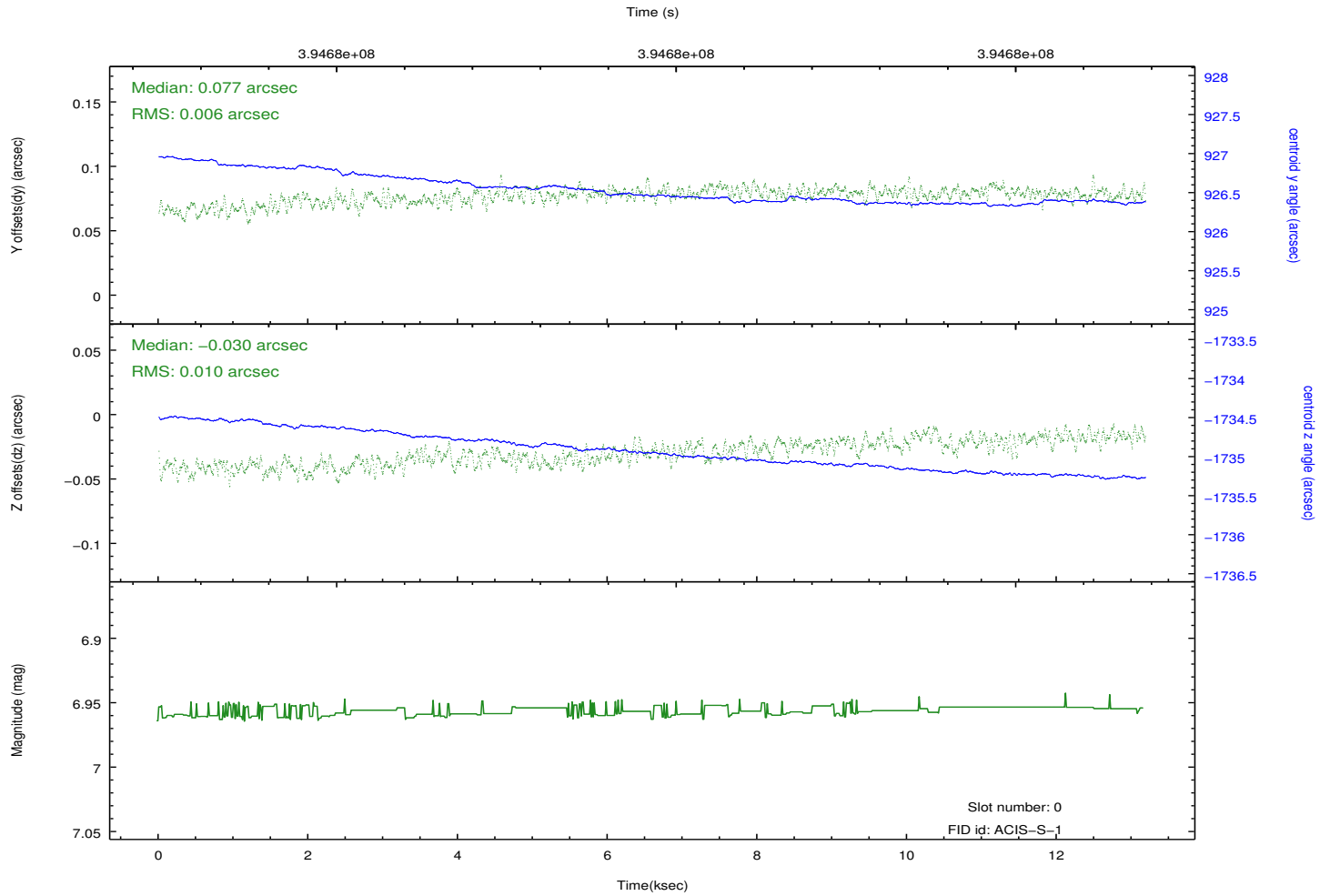
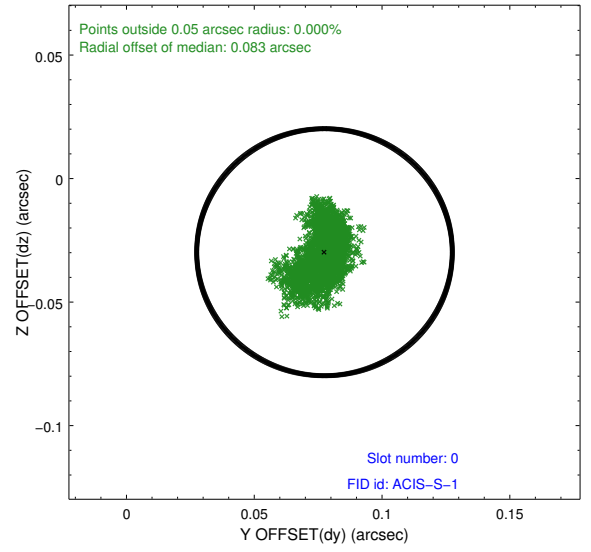
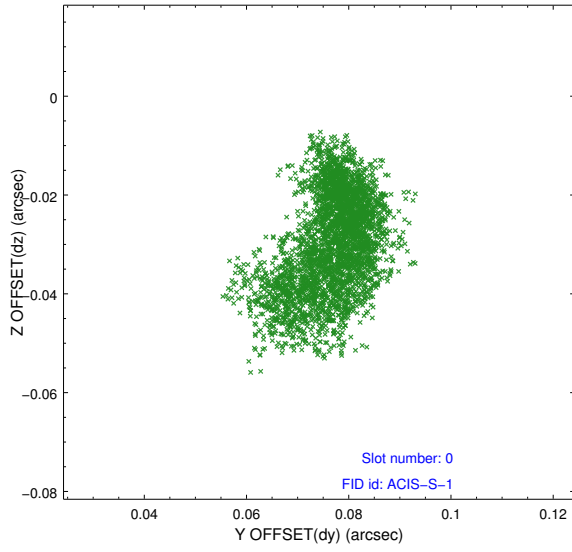


2.4.5 Slot 7

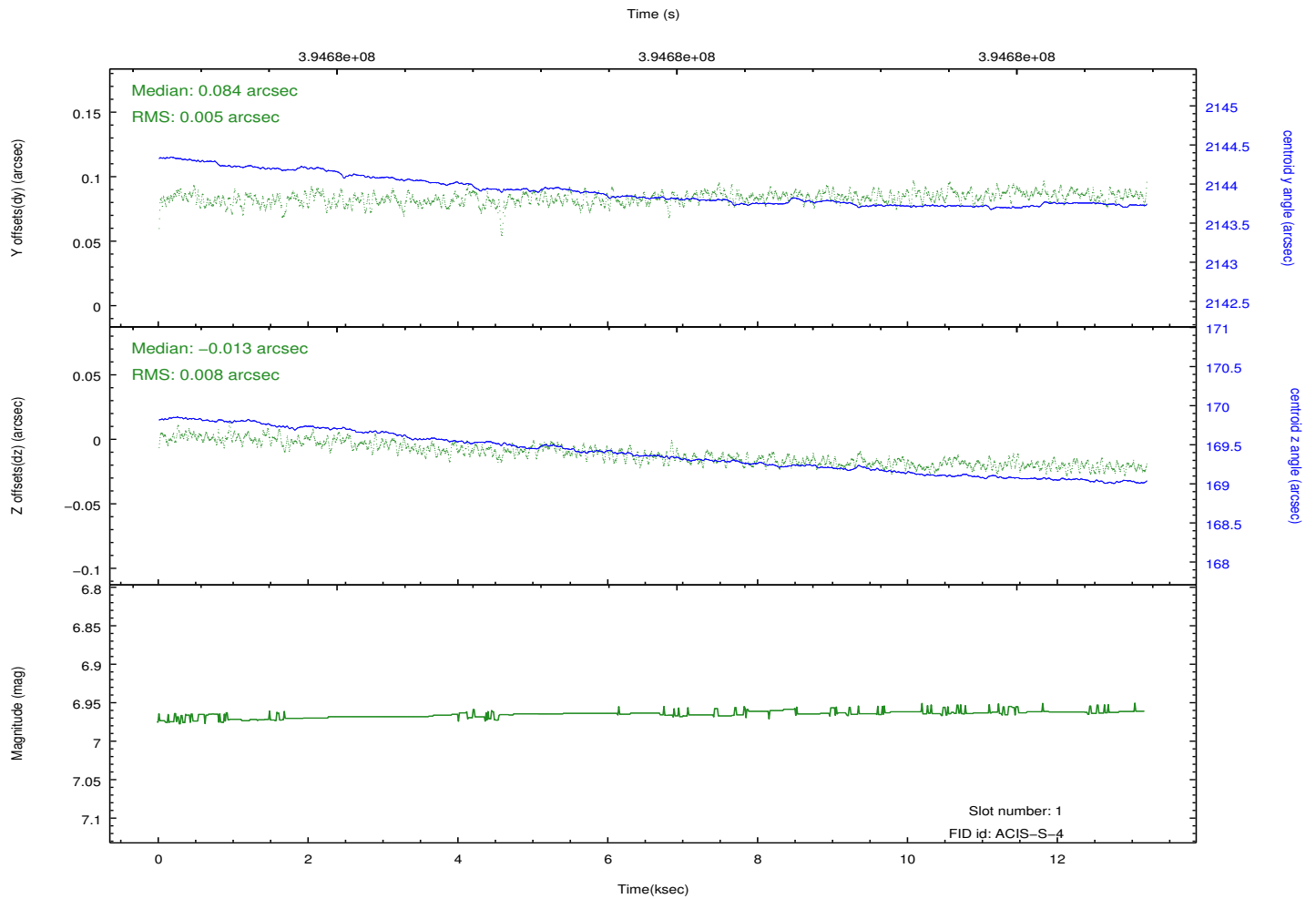
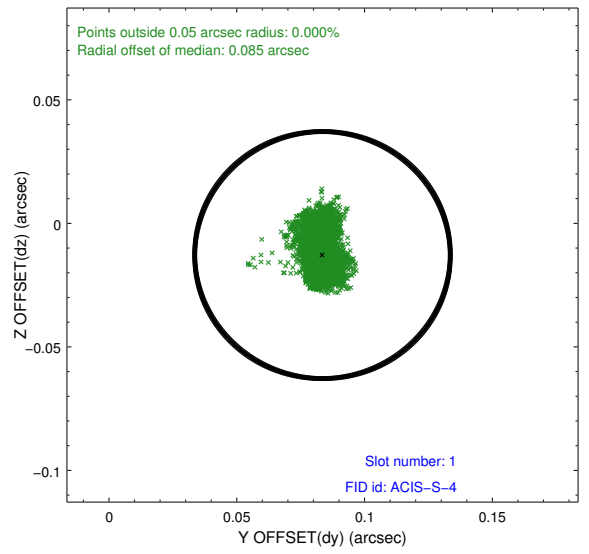
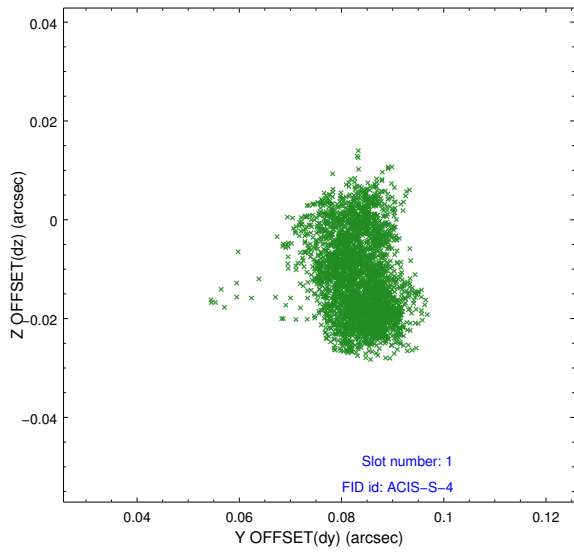


2.5 FID Slots

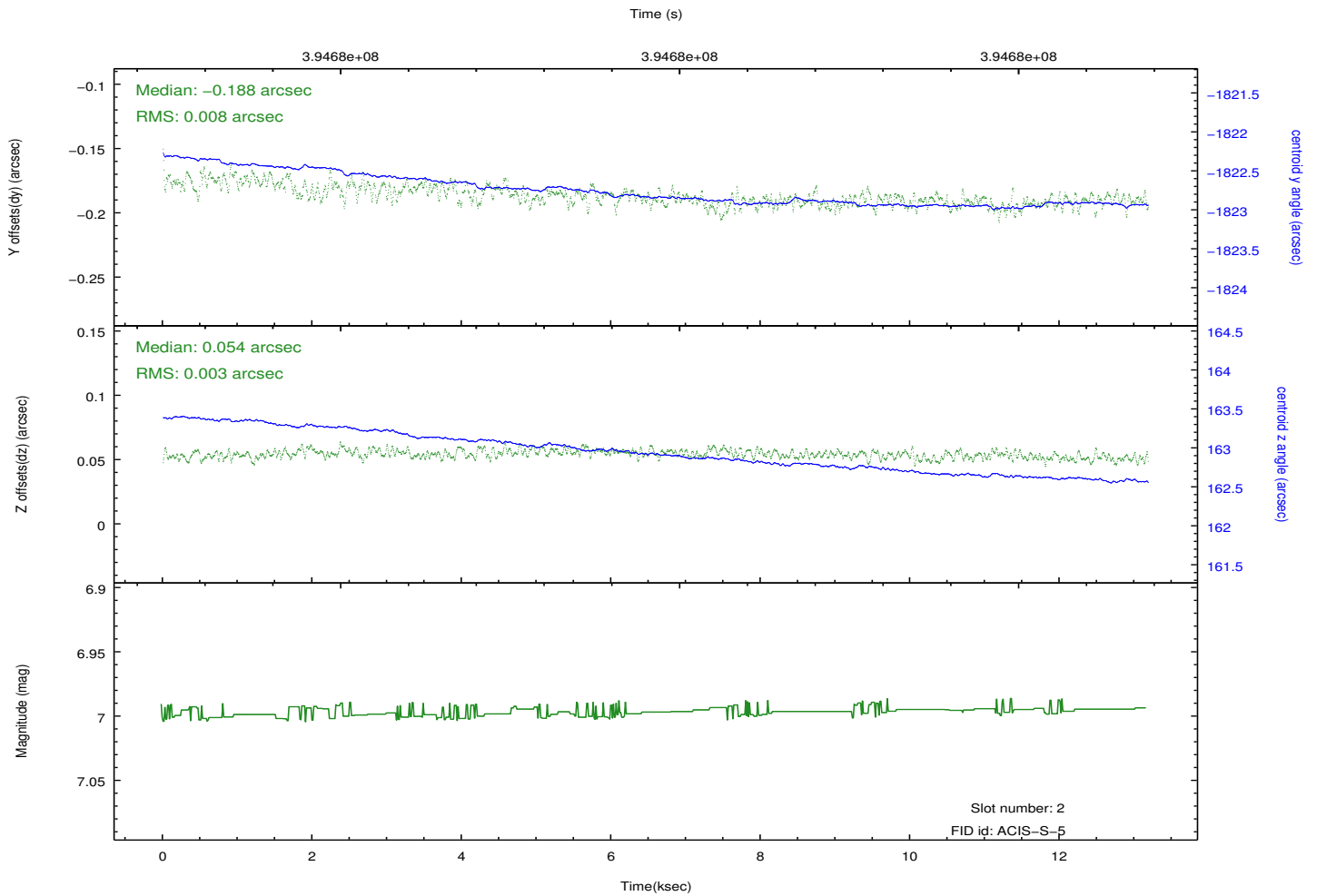
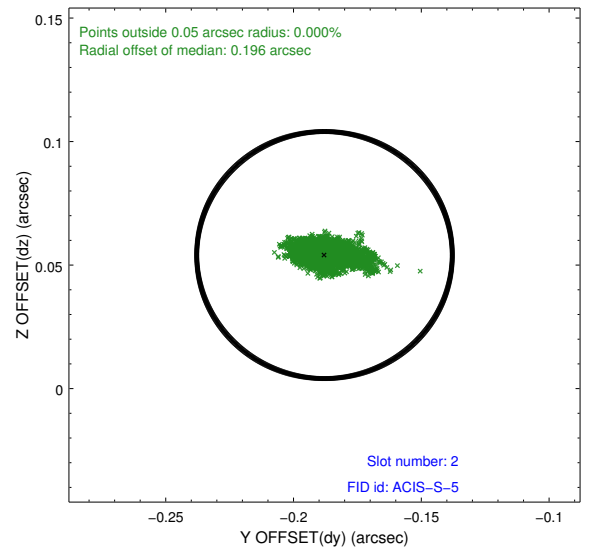
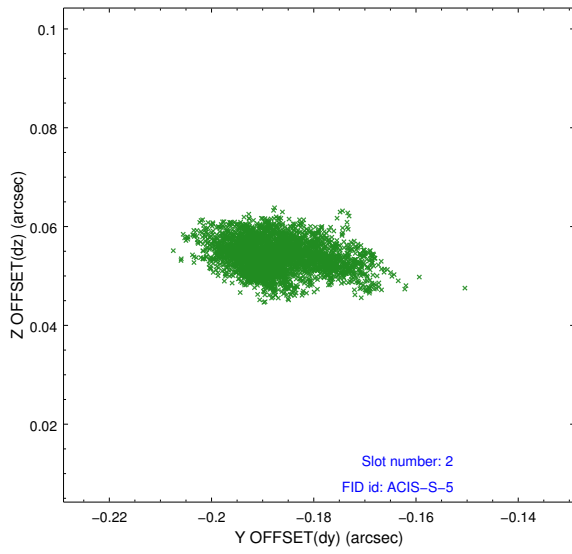
2.5.1 Slot 0



2.5.2 Slot 1



2.5.3 Slot 2



A Summary

A.1 Status

V&V Scientist	Jen Lauer
V&V Date (YYYY-MM-DD)	2012.07.06
V&V Edition	1
V&V Disposition and Status	OK
V&V Charge Time	13.064499908447

A.2 Comments

Monitor constraint met, follows obs11550 by 209 days.