

V&V Reference Report

L2 ASCDS Version : 8.4.5

Observation 11591 - L2 Version 2
Chandra X-Ray Center

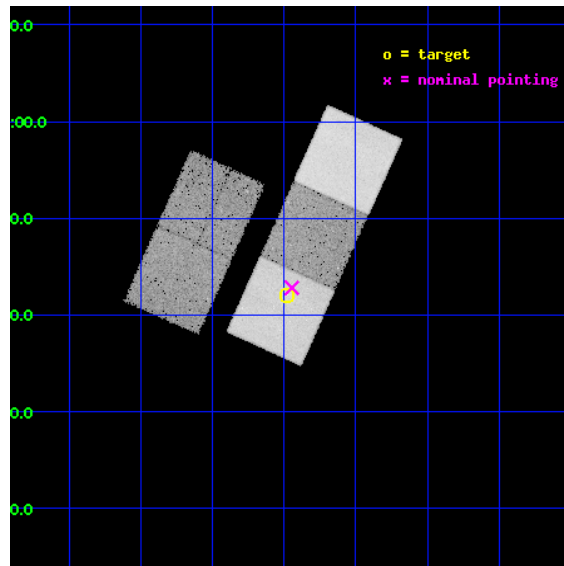
L2 Processing Date : Jun 12 2012

Contents

1	Front	2
2	OBI	3
2.1	OBI	3
2.1.1	Images	3
2.1.2	Bias	3
2.1.3	Parameters	4
2.1.4	Events	4
2.2	Compared Parameters	5
2.3	Aspect	6
2.4	Star Slots	9
2.4.1	Slot 3	9
2.4.2	Slot 4	10
2.4.3	Slot 5	11
2.4.4	Slot 6	12
2.4.5	Slot 7	13
2.5	FID Slots	14
2.5.1	Slot 0	14
2.5.2	Slot 1	15
2.5.3	Slot 2	16
A	Summary	17
A.1	Status	17
A.2	Comments	17

1 Front

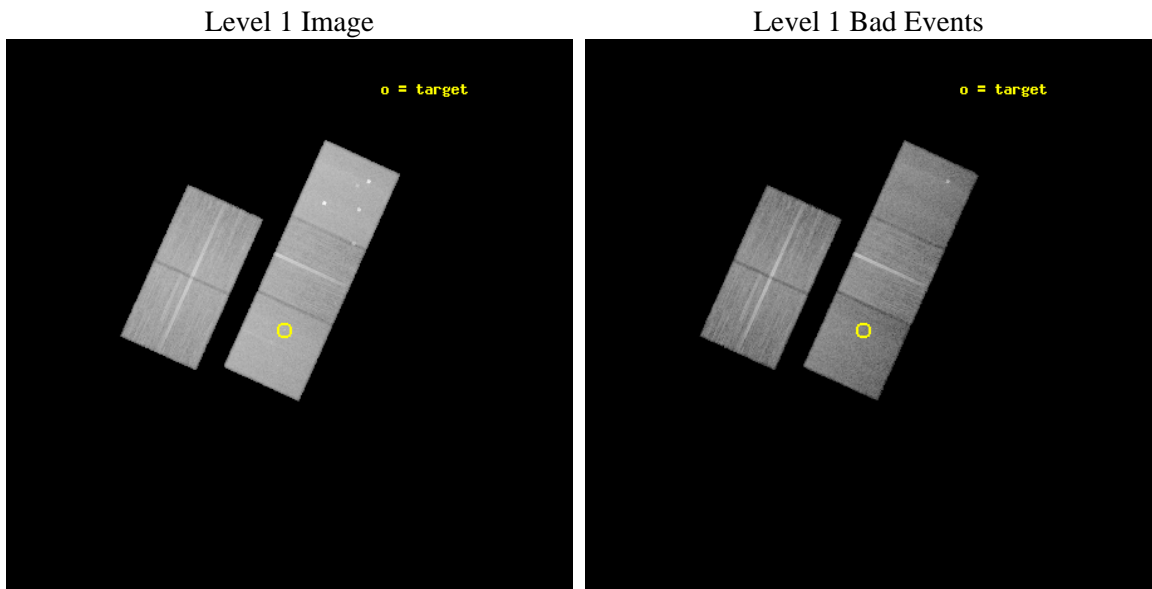
seq_num	702177	Sequence number
obs_id	11591	Observation id
title	Strong radio AGN in the center of galaxy groups	Proposal title
observer	Dr. Ming Sun	Principal investigator
object	C4-DR5-2073	Source name
dtcycle	0	
cycle	P	events from which exps? Prim/Second/Both
ra_targ	359.994583	Observer's specified target RA [deg]
dec_targ	0.701806	Observer's specified target Dec [deg]
ra_nom	359.98647396541	Nominal RA [deg]
dec_nom	0.71364253430471	Nominal Dec [deg]
roll_nom	114.3137962314	Nominal Roll [deg]
revision	2	Processing version of data
ontime	24033.543151438	Sum of GTIs [s]
livetime	23719.527216928	Livetime [s]
ontime2	24030.237981021	Sum of GTIs [s]
ontime3	24030.279021144	Sum of GTIs [s]
ontime5	24033.502111435	Sum of GTIs [s]
ontime6	24033.461071432	Sum of GTIs [s]
ontime7	24033.543151438	Sum of GTIs [s]
l2events	301323	Number of level 2 events



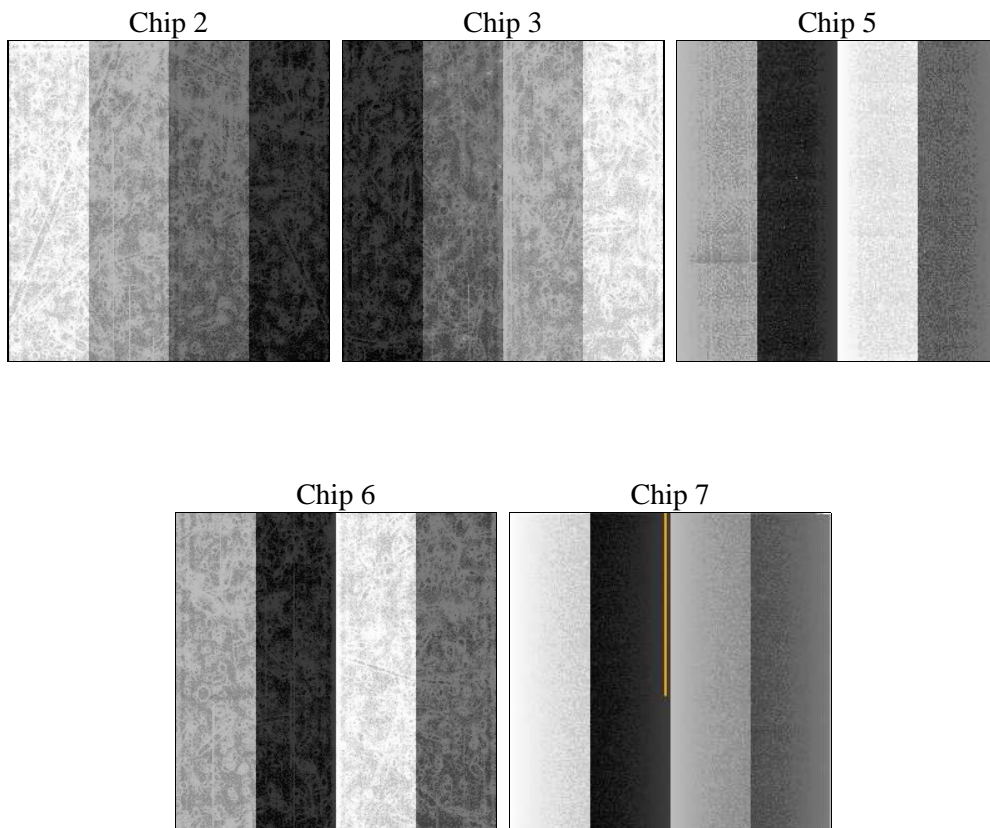
2 OBI

2.1 OBI

2.1.1 Images



2.1.2 Bias



2.1.3 Parameters

obi_num	0	Obi number	sched_exp_time	24000.000000	[s] Scheduled observation exposure time
ascdsver	8.4.5	Processing system revision	ontime	24033.543151438	Sum of GTIs [s]
caldbver	4.4.10	 	ontime2	24030.237981021	Sum of GTIs [s]
date	2012-06-12T01:48:32	Date and time of file creation	ontime3	24030.279021144	Sum of GTIs [s]
revision	2	Processing version of data	ontime5	24033.502111435	Sum of GTIs [s]
			ontime6	24033.461071432	Sum of GTIs [s]
			ontime7	24033.543151438	Sum of GTIs [s]
			l1events	1188651	Number of level 1 events

2.1.4 Events

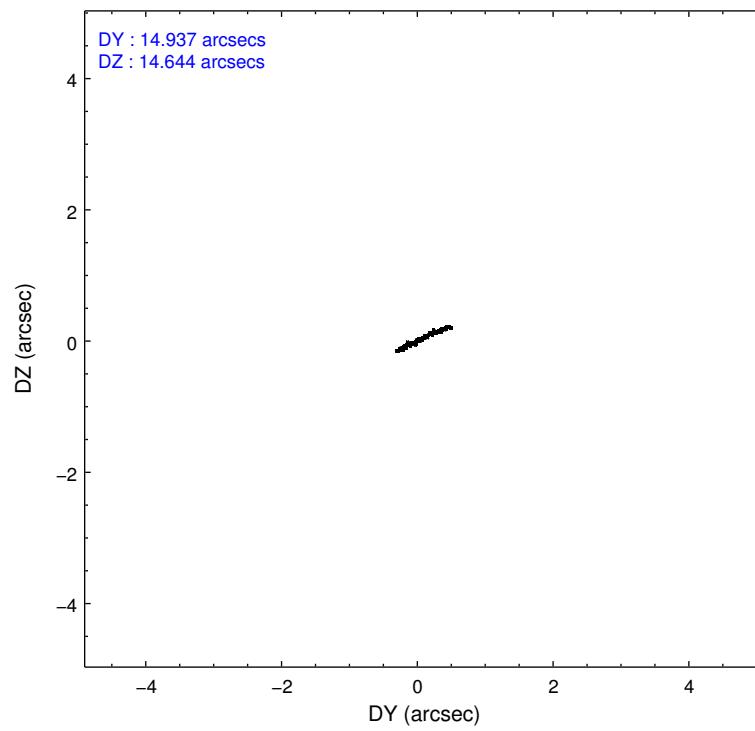
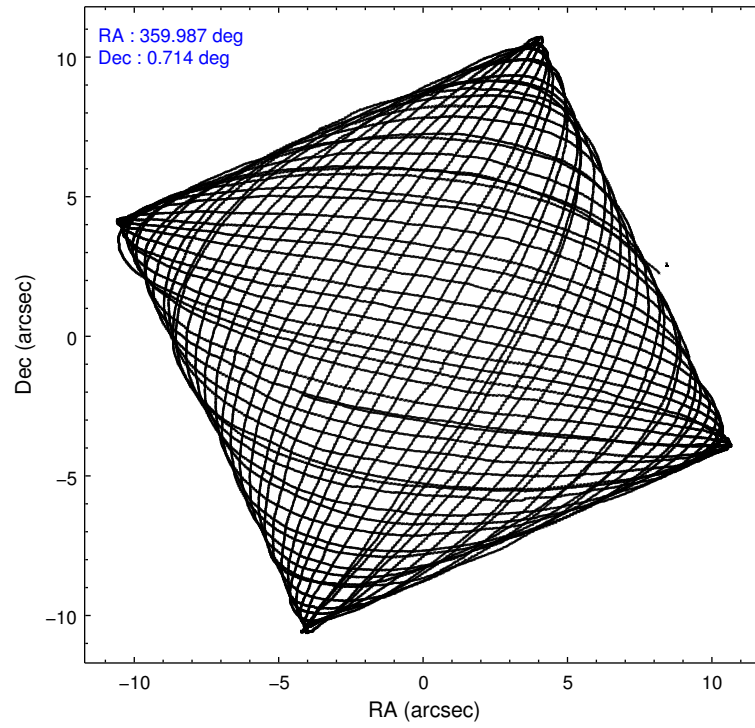
	ccd 2	ccd 3	ccd 5	ccd 6	ccd 7
level 1 events	217275	206902	305672	215574	243228
rejected events	196584	187112	151219	192653	132469
rejected %	90%	90%	49%	89%	54%

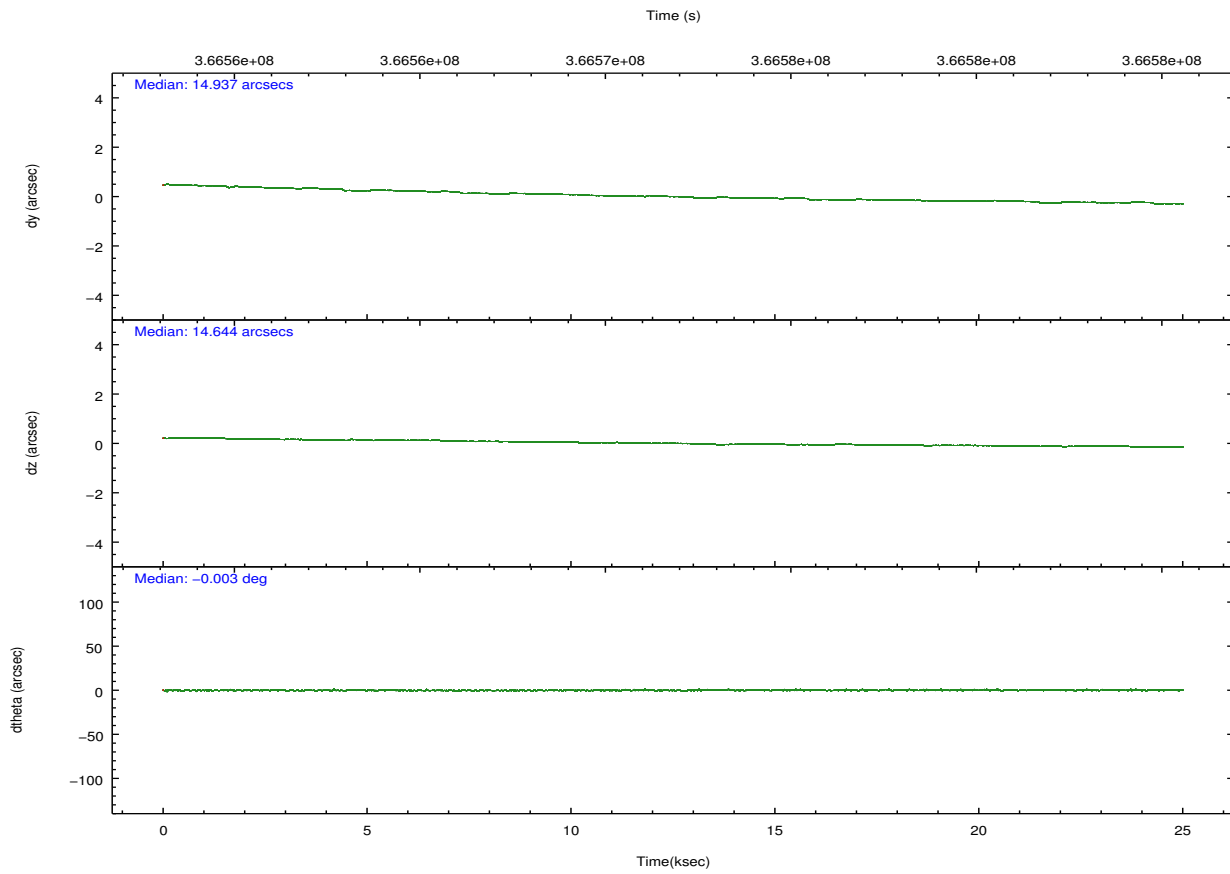
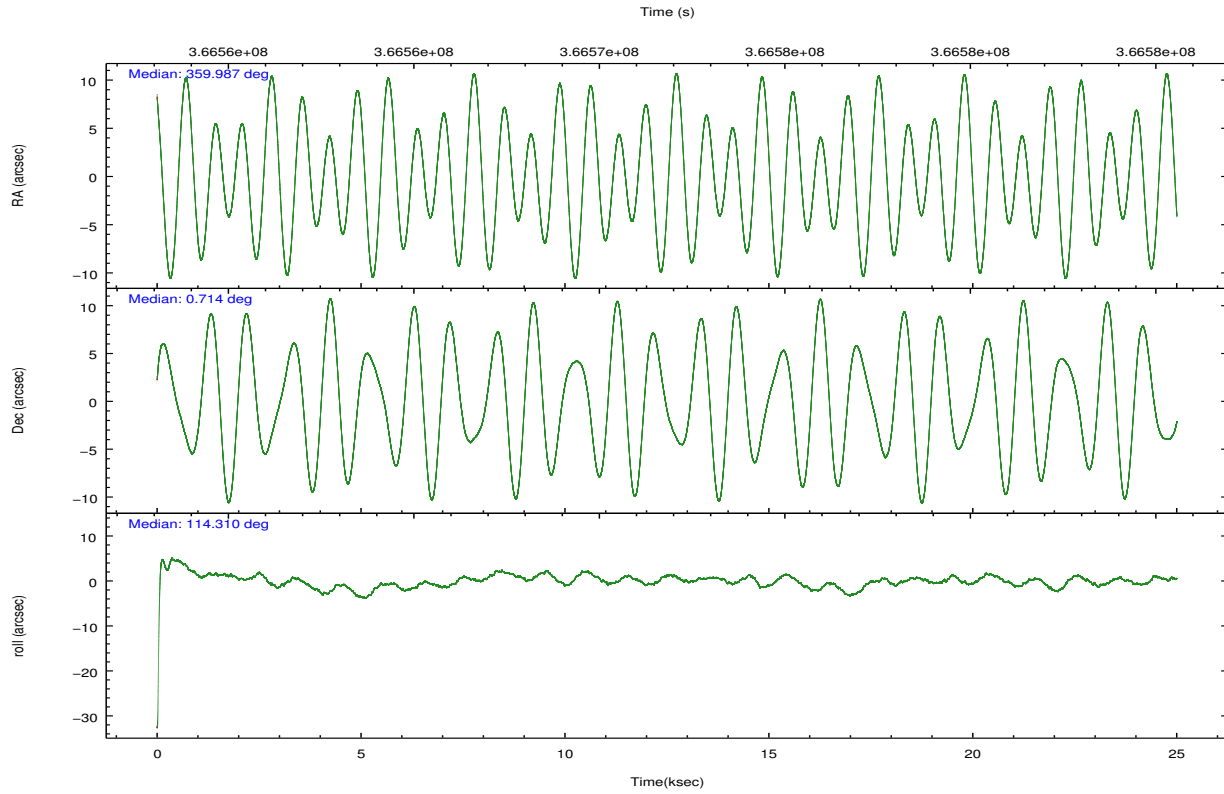
	ccd 2	ccd 3	ccd 5	ccd 6	ccd 7
grade 0 events	7380	6880	18728	8089	10656
	3%	3%	6%	3%	4%
grade 1 events	112	120	608	99	332
	0%	0%	0%	0%	0%
grade 2 events	4947	4500	46058	5108	22553
	2%	2%	15%	2%	9%
grade 3 events	2144	2250	5786	2357	10081
	0%	1%	1%	1%	4%
grade 4 events	2316	2171	5468	2421	9768
	1%	1%	1%	1%	4%
grade 5 events	6998	8677	22830	8943	24944
	3%	4%	7%	4%	10%
grade 6 events	3910	3995	78446	4953	57731
	1%	1%	25%	2%	23%
grade 7 events	189468	178309	127748	183604	107163
	87%	86%	41%	85%	44%

2.2 Compared Parameters

Parameter	Planned	Actual	Parameter	Planned	Actual
Instrument	ACIS	ACIS	Obspar format version number	7	7
Detector	ACIS-23567	ACIS-23567	Obspar file type	PREDICTED	ACTUAL
Grating	NONE	NONE	Obspar update status	NONE	UPDATED
Data mode	VFAINT	VFAINT	CCD I0 on	N	N
Observation mode	POINTING	POINTING	CCD I1 on	N	N
[deg] Pointing RA	0.008898	359.9864739654146	CCD I2 on	O1	Y
[deg] Pointing Dec	0.697998	0.7136425343047059	CCD I3 on	Y	Y
[deg] Pointing Roll	114.156913	114.3137962313967	CCD S0 on	N	N
[mm] SIM focus pos	-0.684267	-0.6828225247311905	CCD S1 on	Y	Y
[mm] SIM defocus	0	0.001444936568705701	CCD S2 on	Y	Y
[mm] SIM translation stage pos	-190.132523	-190.1425803651734	CCD S3 on	Y	Y
[mm] SIM translation stage offset	0	0.01005778216563158	CCD S4 on	N	N
[s] Observation start time (MET)	366560333.184000	366558998.77612	CCD S5 on	N	N
Observation start date	2009-08-13T14:17:47	2009-08-13T13:56:38	Number of optional ACIS chips dropped	0	0
[s] Observation end time (MET)	366584333.184000	366585562.67745	On-chip summing requested	N	N
Observation end date	2009-08-13T20:57:47	2009-08-13T21:19:22	Subarray requested	NONE	NONE
Read mode	TIMED	TIMED	Alternating exposures requested	N	N
			[s] Primary exposure time	0.000000	3.1

2.3 Aspect



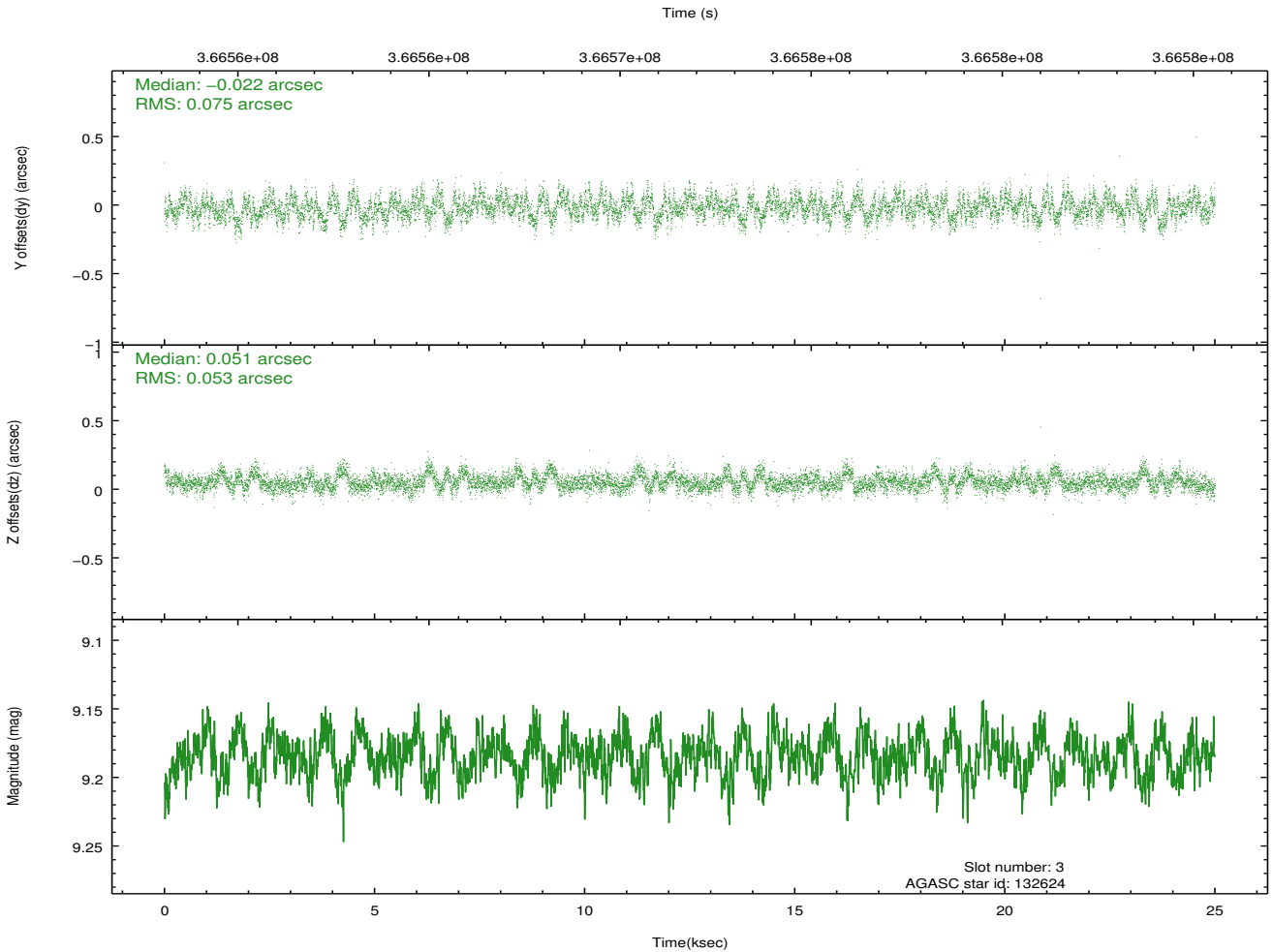
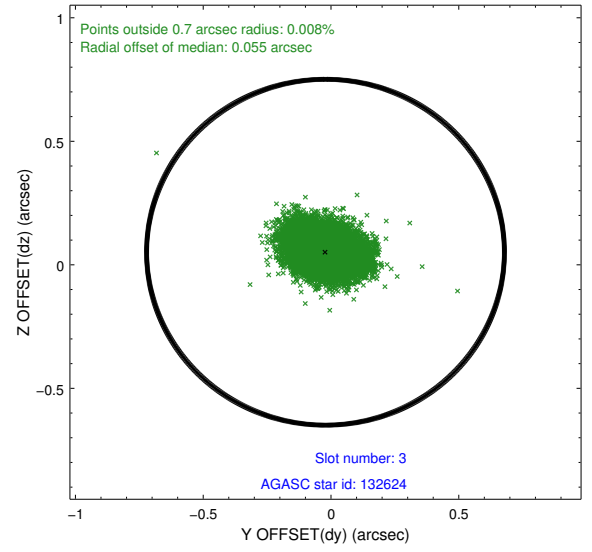
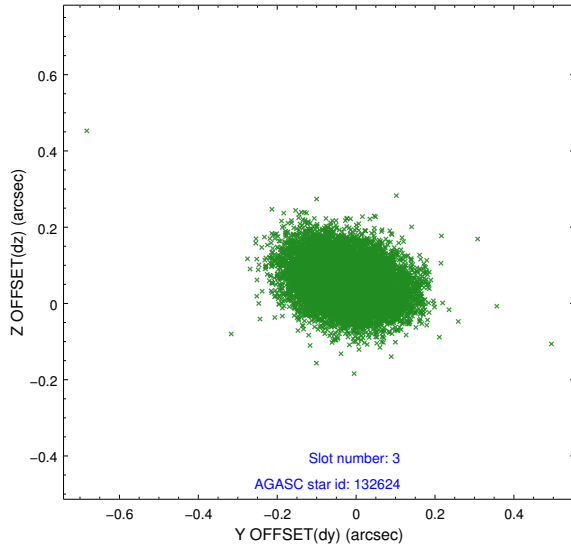


Slot Statistics

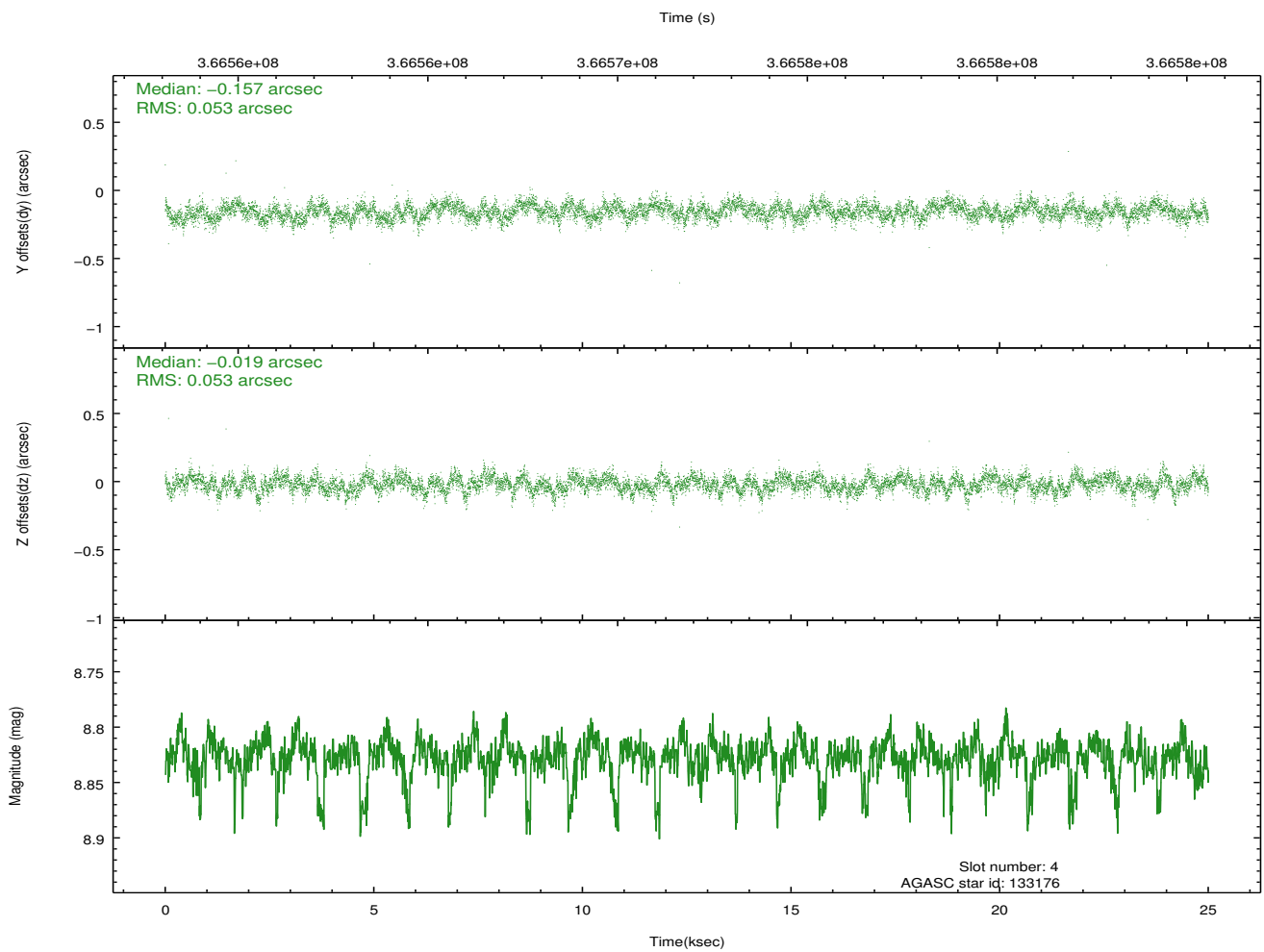
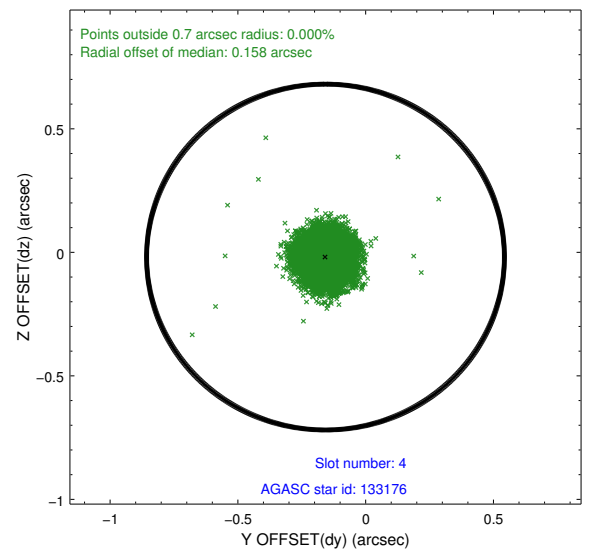
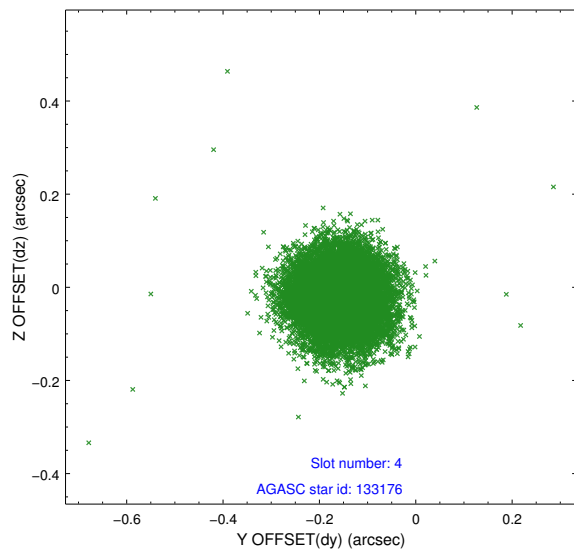
slot	status	id	mag	n_pts	med_dy	med_dz	dr1	dr2	ra	dec	mean_y	mean_z
0	FID	ACIS-S-2	6.97	6099	-0.151	-0.105	0.009	0.018	0.000000	0.000000	-768.11	-1736.07
1	FID	ACIS-S-4	7.05	6099	0.157	0.080	0.007	0.012	0.000000	0.000000	2145.44	172.43
2	FID	ACIS-S-6	7.20	6098	-0.035	0.031	0.008	0.013	0.000000	0.000000	394.17	809.94
3	GUIDE	132624	9.18	12184	-0.022	0.051	0.097	0.159	0.026656	1.331953	2056.62	-991.88
4	GUIDE	133176	8.83	12177	-0.157	-0.019	0.079	0.126	0.143410	1.066215	1011.83	-984.15
5	GUIDE	133360	9.29	12183	-0.039	-0.260	0.110	0.170	0.526988	0.415348	-1691.16	-1285.61
6	GUIDE	134680	9.06	12190	0.205	0.372	0.080	0.128	0.365086	0.301584	-1826.39	-585.60
7	GUIDE	139192	7.79	12194	0.012	-0.147	0.079	0.119	0.162932	0.222932	-1787.40	193.53

2.4 Star Slots

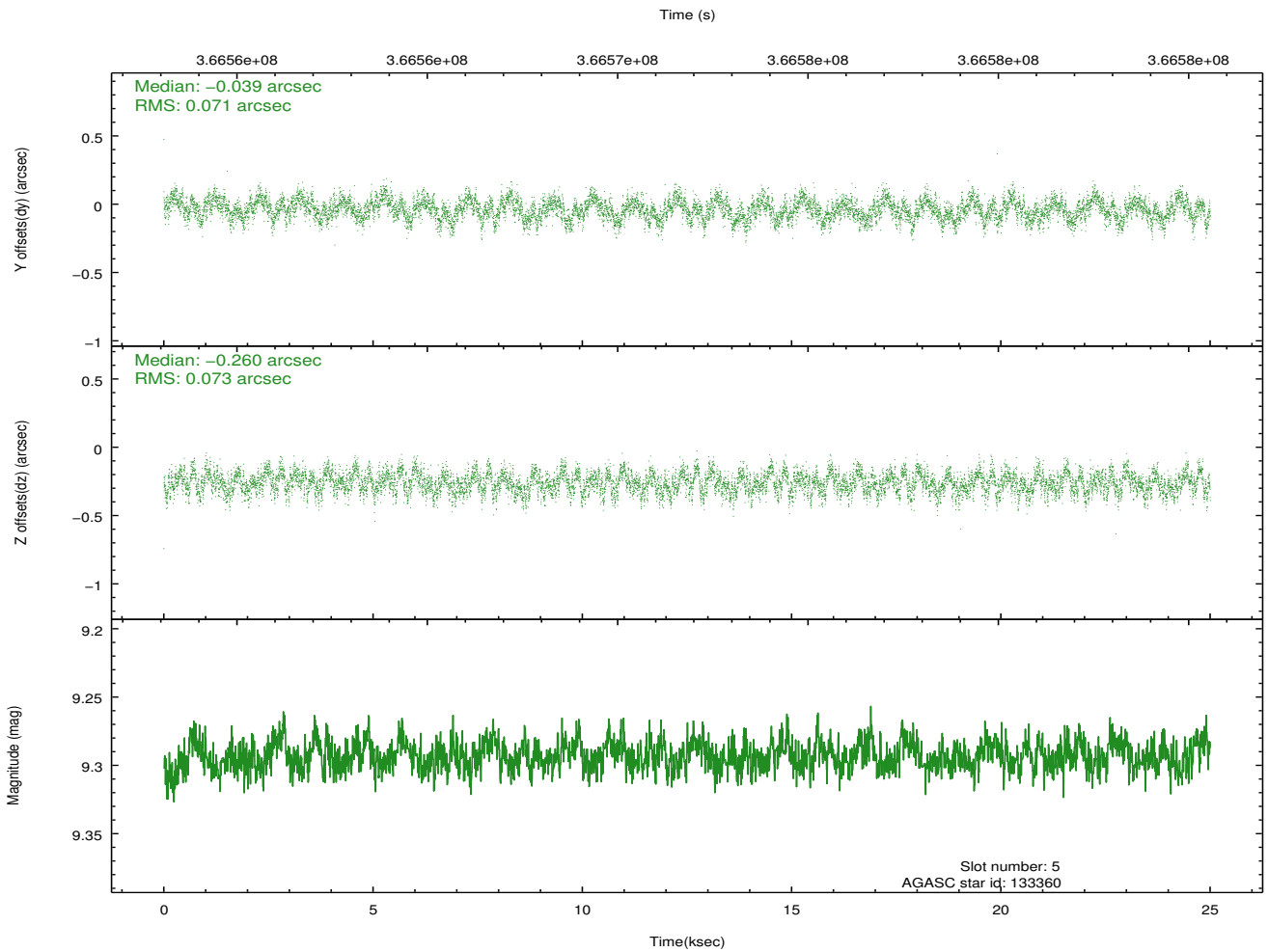
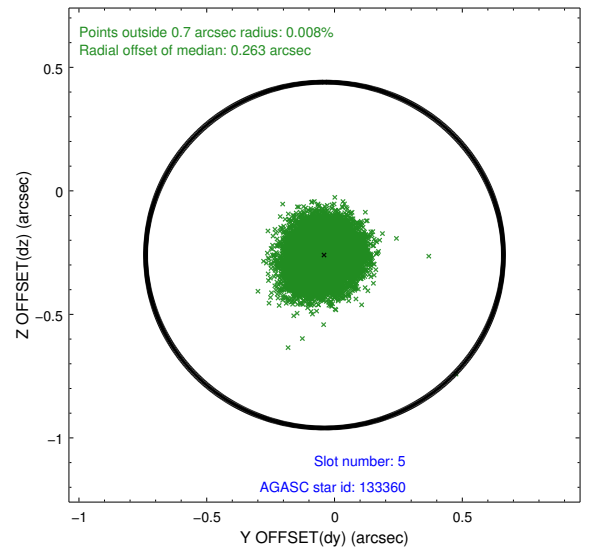
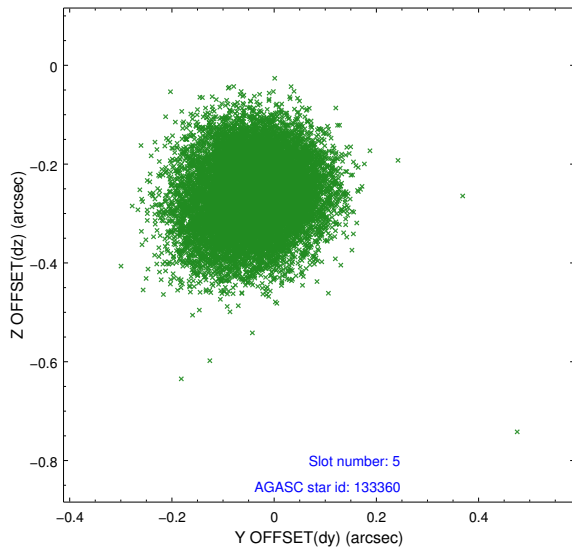
2.4.1 Slot 3



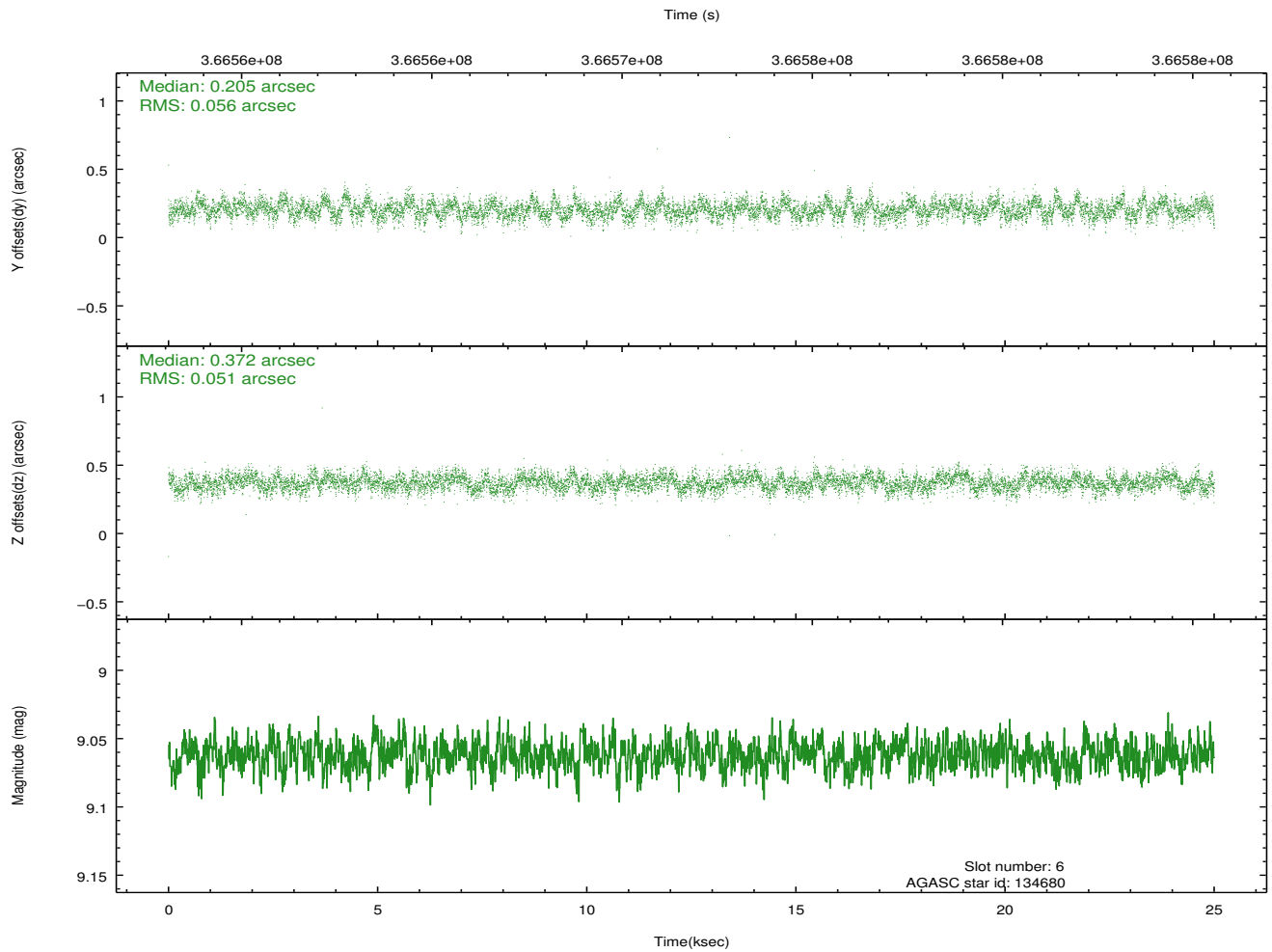
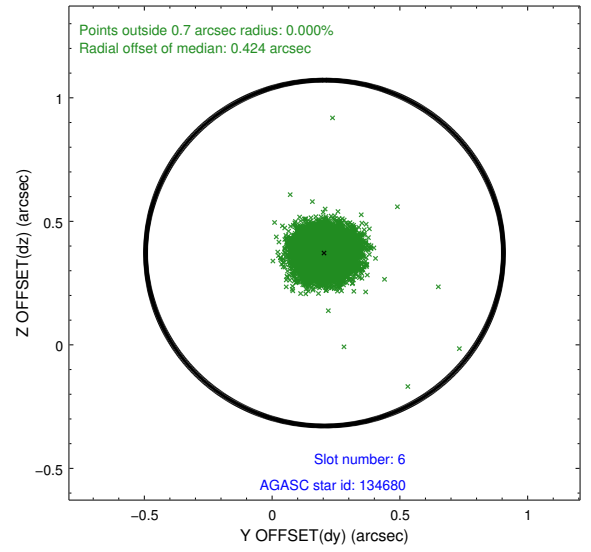
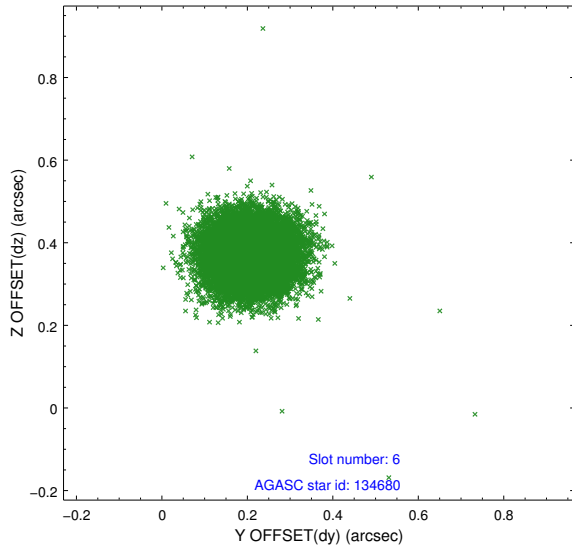
2.4.2 Slot 4



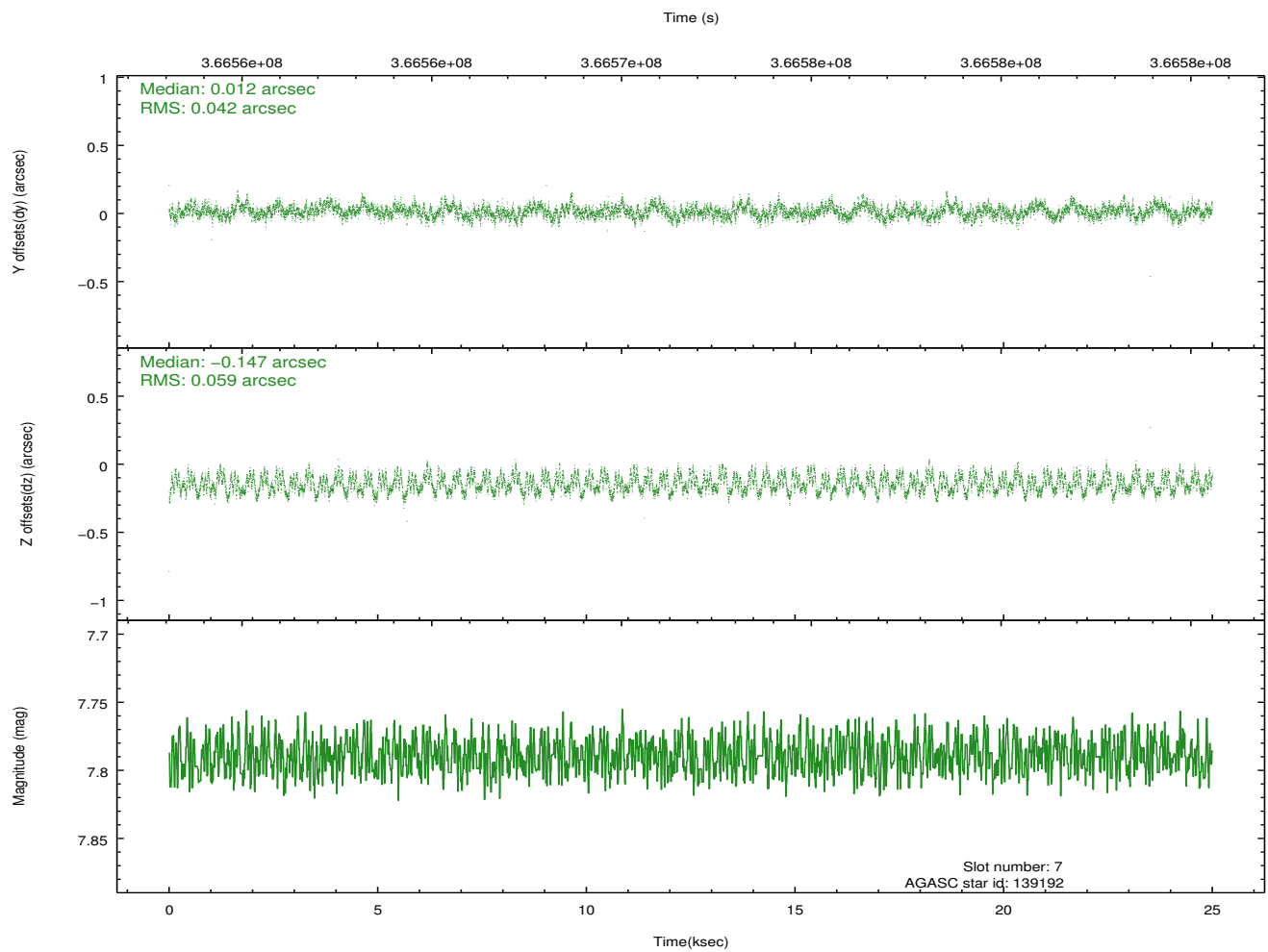
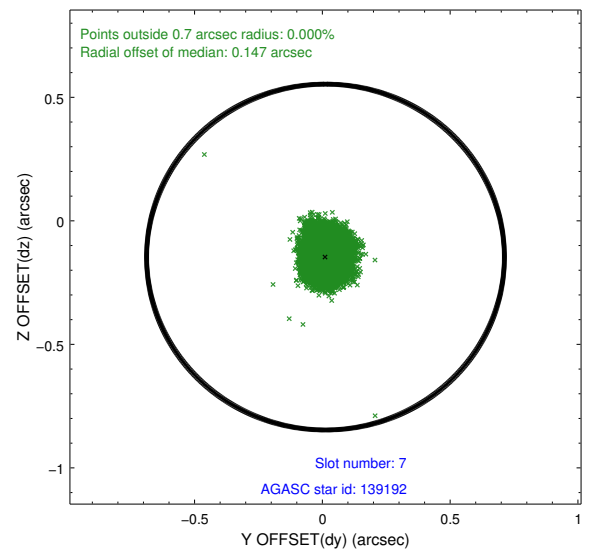
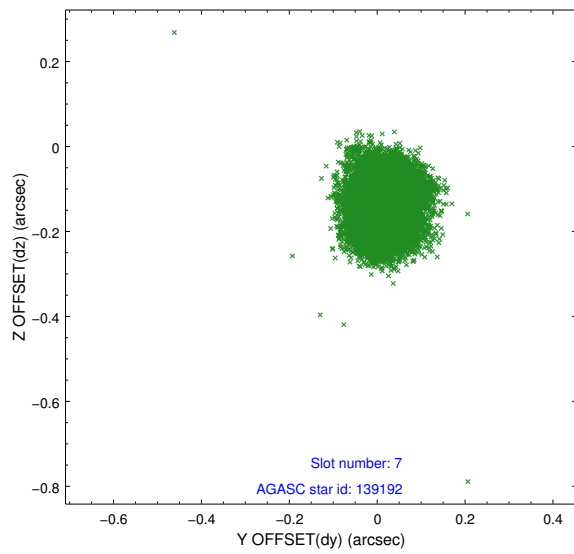
2.4.3 Slot 5



2.4.4 Slot 6

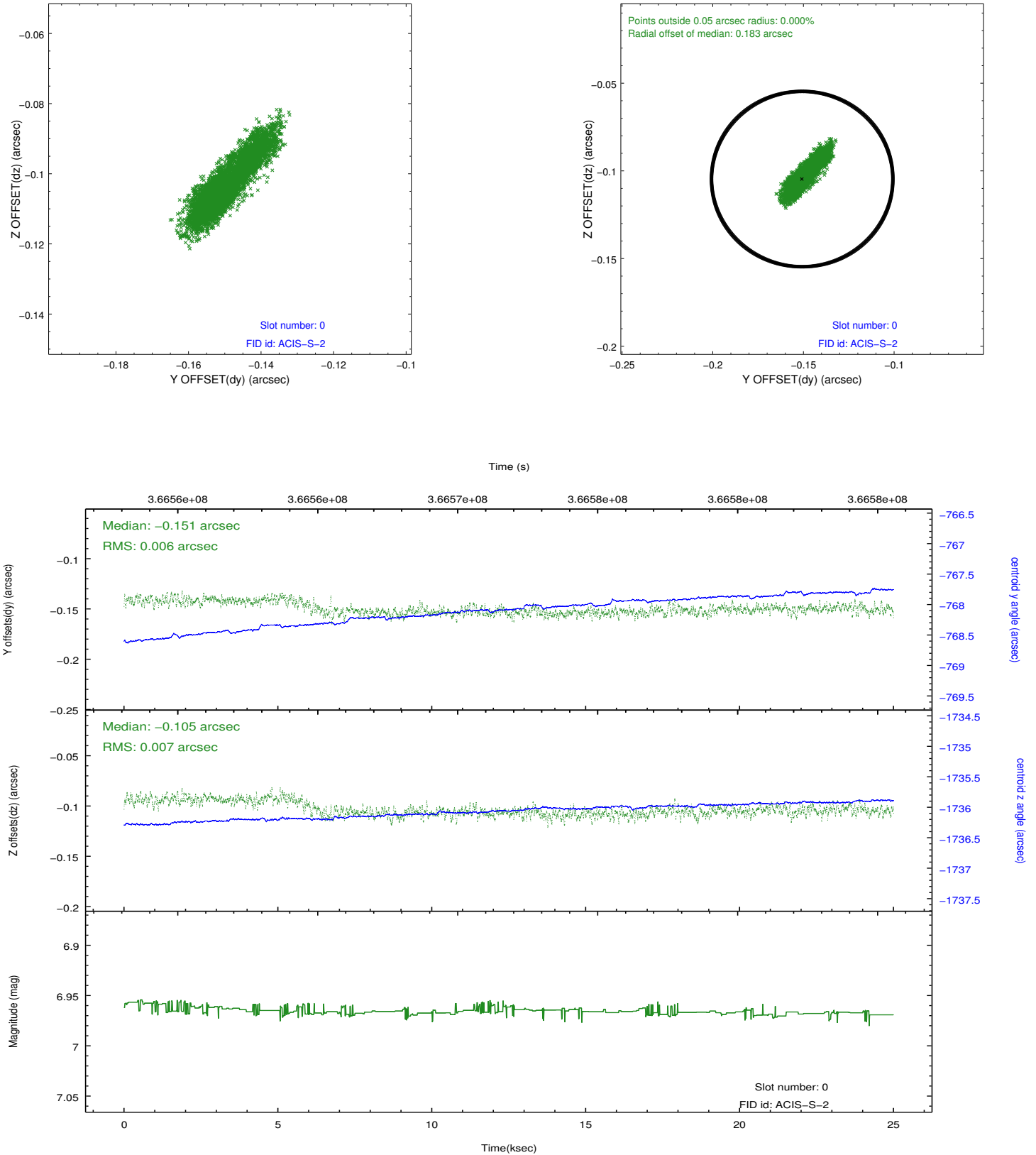


2.4.5 Slot 7

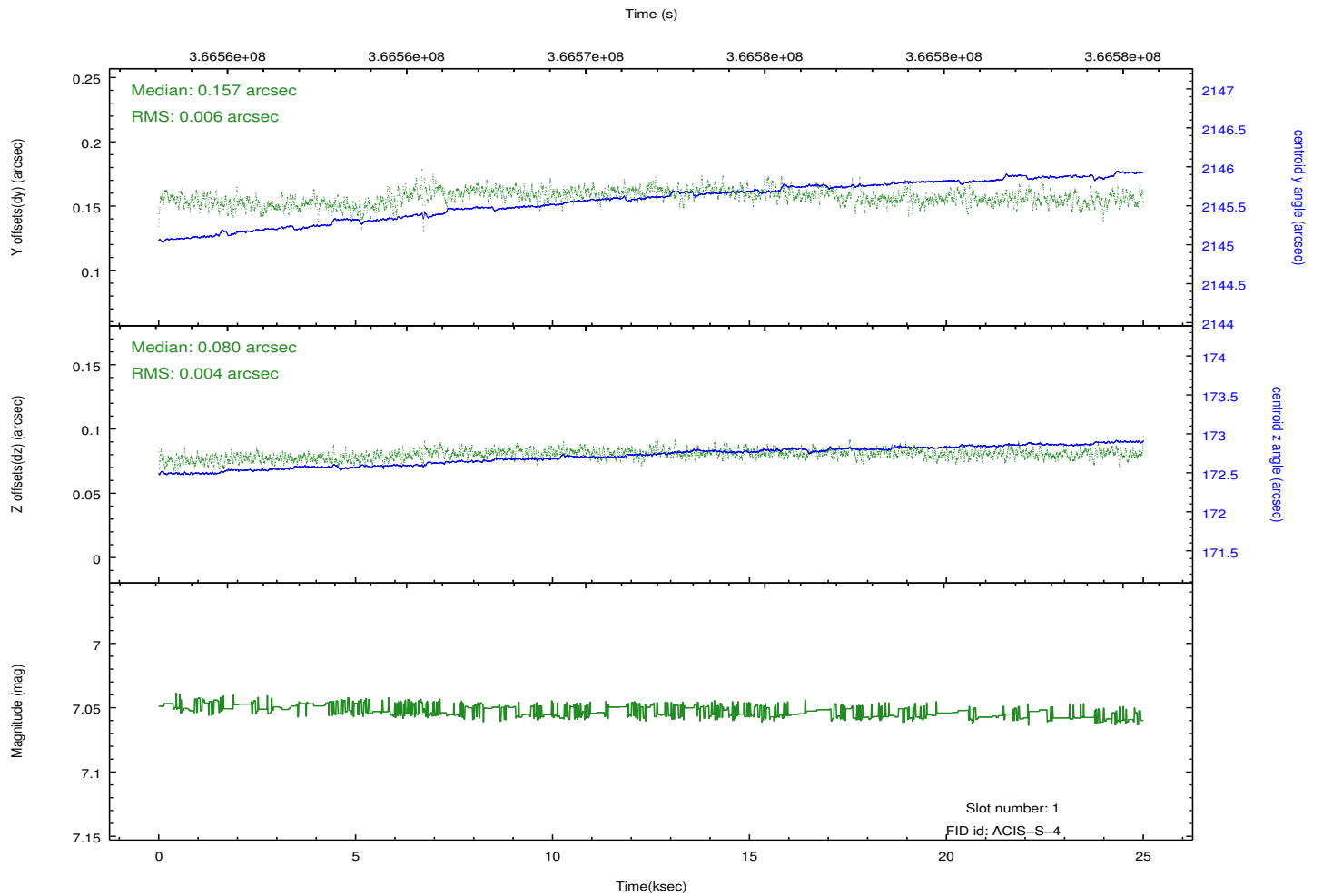
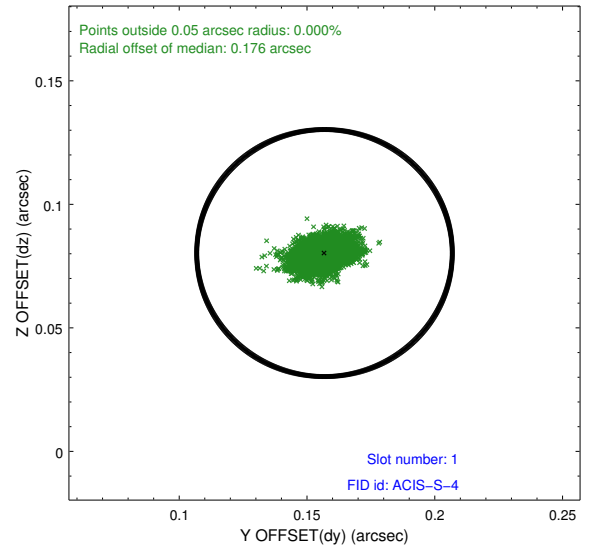
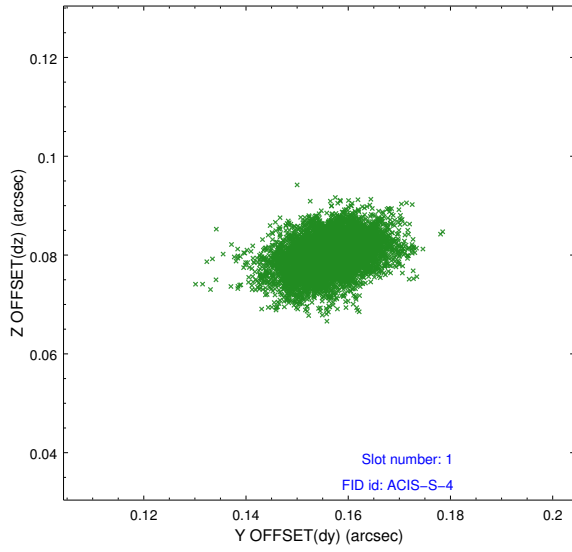


2.5 FID Slots

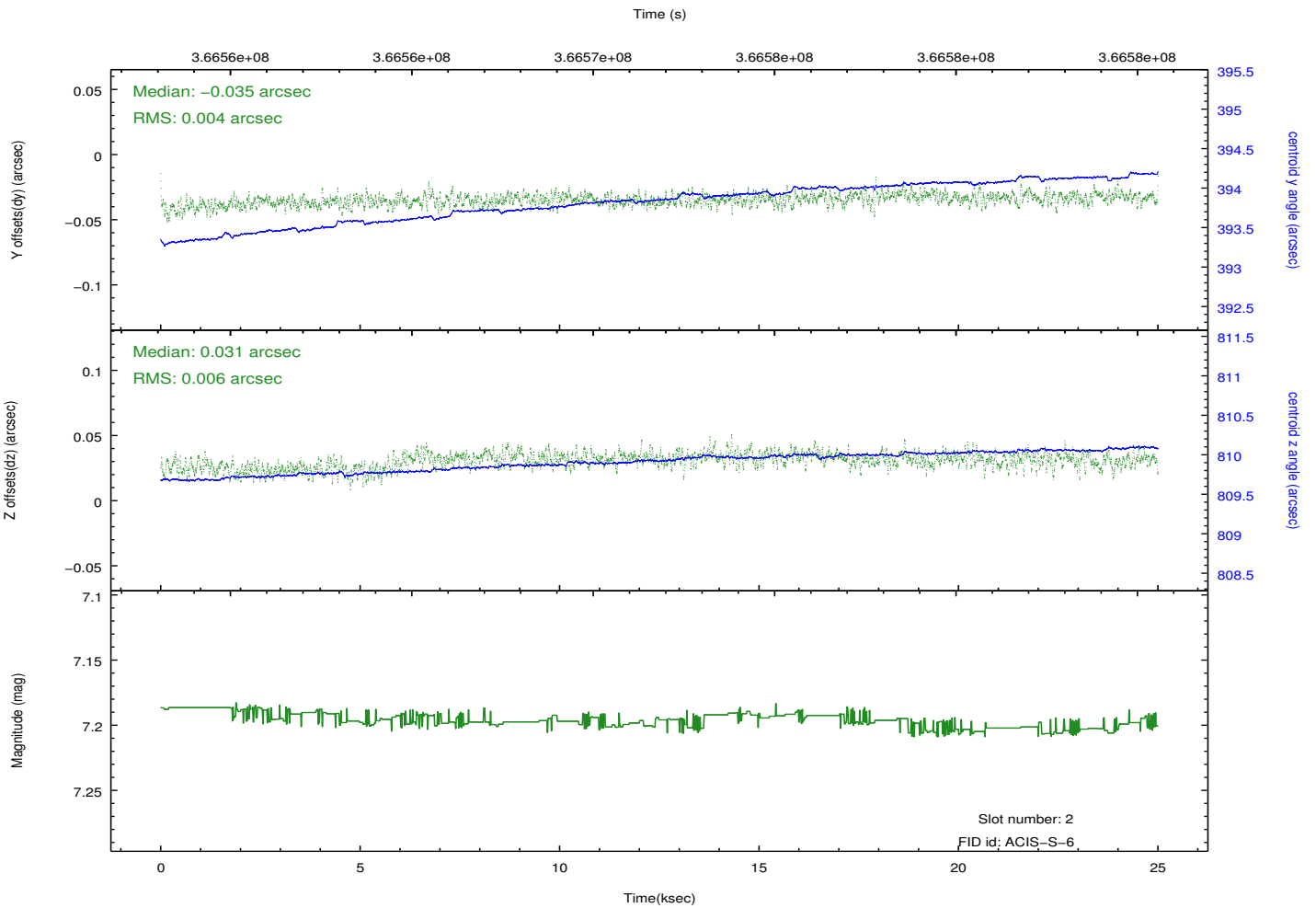
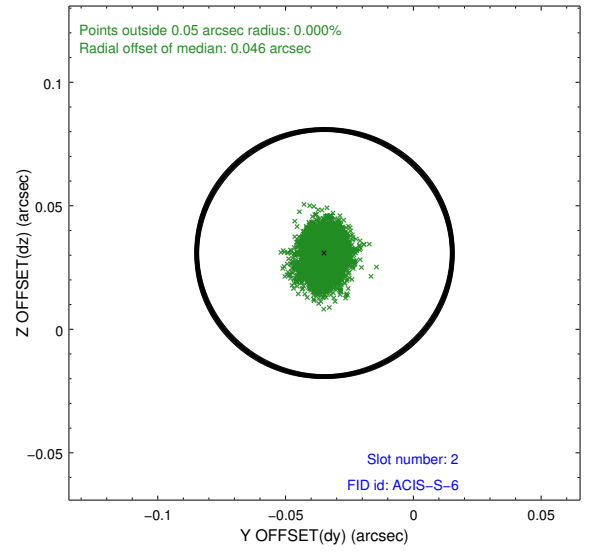
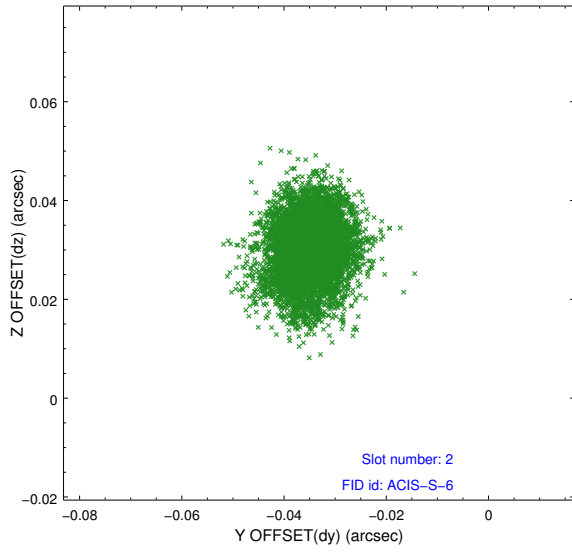
2.5.1 Slot 0



2.5.2 Slot 1



2.5.3 Slot 2



A Summary

A.1 Status

V&V Scientist	Jen Lauer
V&V Date (YYYY-MM-DD)	2012.06.14
V&V Edition	1
V&V Disposition and Status	OK
V&V Charge Time	24.0335431

A.2 Comments