

# V&V Reference Report

## L2 ASCDS Version : 8.4.5

Observation 11611 - L2 Version 2  
Chandra X-Ray Center

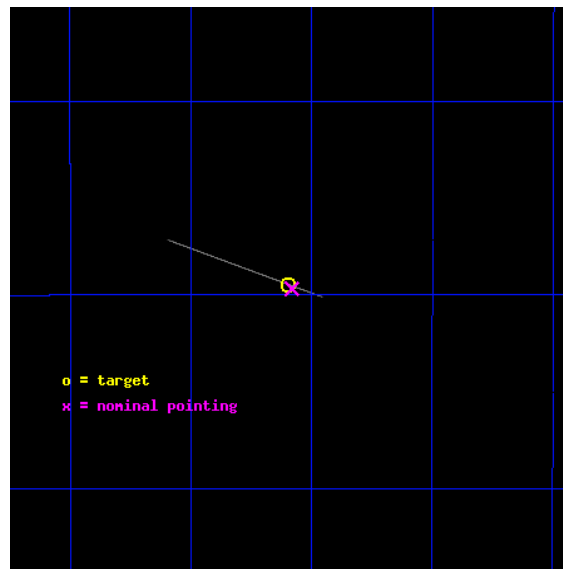
L2 Processing Date : Jun 26 2012

## Contents

<b>1</b>	<b>Front</b>	<b>2</b>
<b>2</b>	<b>OBI</b>	<b>3</b>
2.1	OBI . . . . .	3
2.1.1	Images . . . . .	3
2.1.2	Bias . . . . .	3
2.1.3	Parameters . . . . .	4
2.1.4	Events . . . . .	4
2.2	Compared Parameters . . . . .	5
2.3	Aspect . . . . .	6
2.4	Star Slots . . . . .	9
2.4.1	Slot 3 . . . . .	9
2.4.2	Slot 4 . . . . .	10
2.4.3	Slot 5 . . . . .	11
2.4.4	Slot 6 . . . . .	12
2.4.5	Slot 7 . . . . .	13
2.5	FID Slots . . . . .	14
2.5.1	Slot 0 . . . . .	14
2.5.2	Slot 1 . . . . .	15
2.5.3	Slot 2 . . . . .	16
<b>A</b>	<b>Summary</b>	<b>17</b>
A.1	Status . . . . .	17
A.2	Comments . . . . .	17

# 1 Front

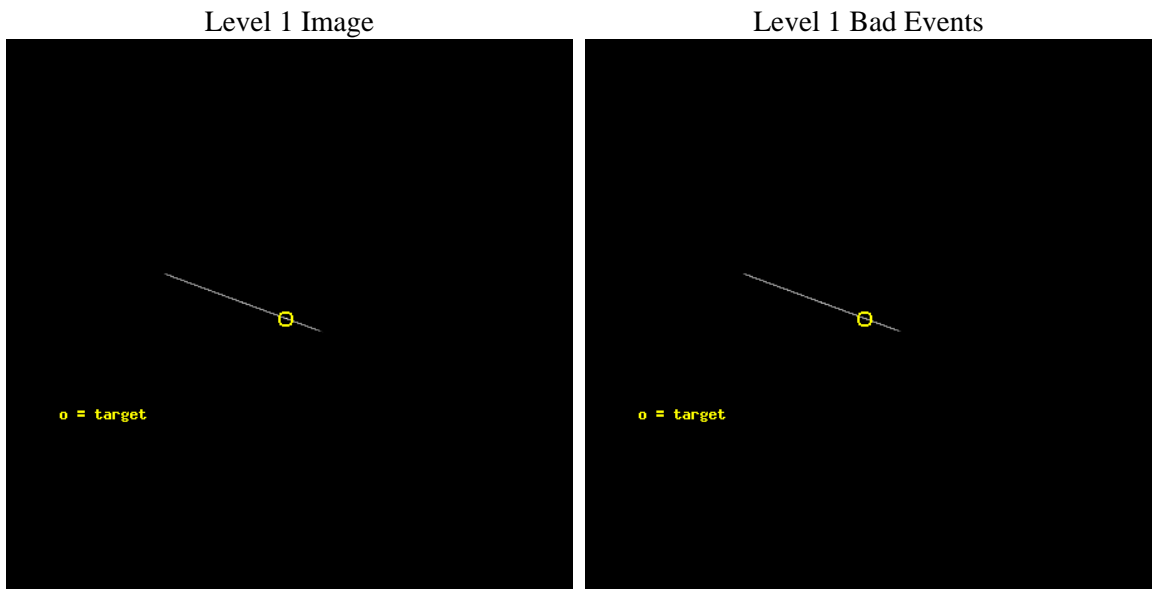
seq_num	702197	Sequence number
obs_id	11611	Observation id
title	The nature of the variable X-ray absorber in ESO 362-G18	Proposal
observer	Giovanni Miniutti	Principal investigator
object	ESO 362-G18	Source name
ra_targ	79.899167	Observer's specified target RA [deg]
dec_targ	-32.657778	Observer's specified target Dec [deg]
ra_nom	79.895637389752	Nominal RA [deg]
dec_nom	-32.661596715531	Nominal Dec [deg]
roll_nom	199.98900185877	Nominal Roll [deg]
revision	2	Processing version of data
ontime	10175.5	Sum of GTIs [s]
livetime	10135.751953125	Livetime [s]
ontime7	10175.5	Sum of GTIs [s]
l2events	81560	Number of level 2 events



## 2 OBI

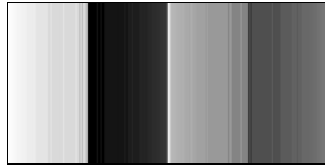
### 2.1 OBI

#### 2.1.1 Images



#### 2.1.2 Bias

Chip 7



### 2.1.3 Parameters

obi_num	0	Obi number	sched_exp_time	10000.000000	[s] Scheduled observation exposure time
ascdsver	8.4.5	Processing system revision	ontime	10175.5	Sum of GTIs [s]
caldbver	4.4.10	&#160	ontime7	10175.5	Sum of GTIs [s]
date	2012-06-26T13:29:57	Date and time of file creation	l1events	182206	Number of level 1 events
revision	2	Processing version of data			

### 2.1.4 Events

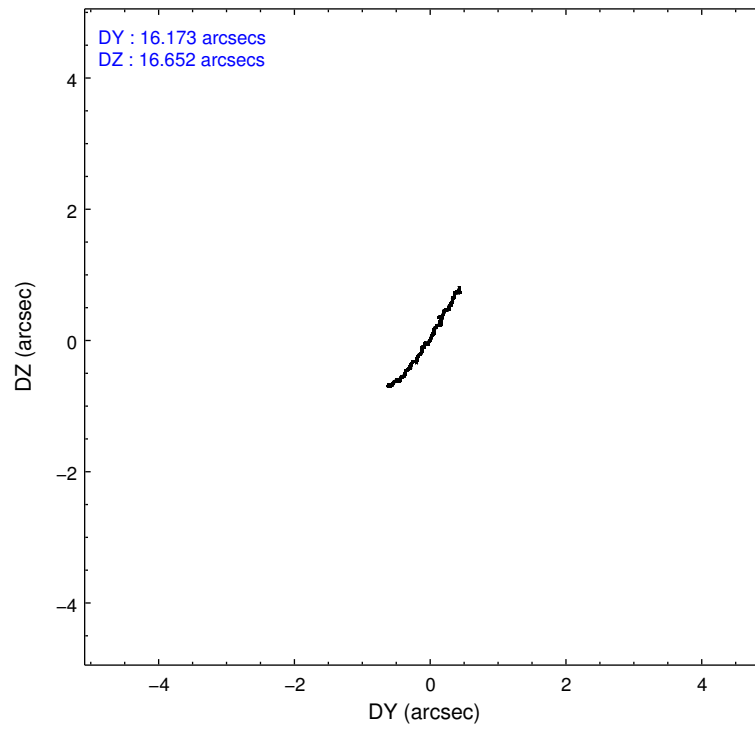
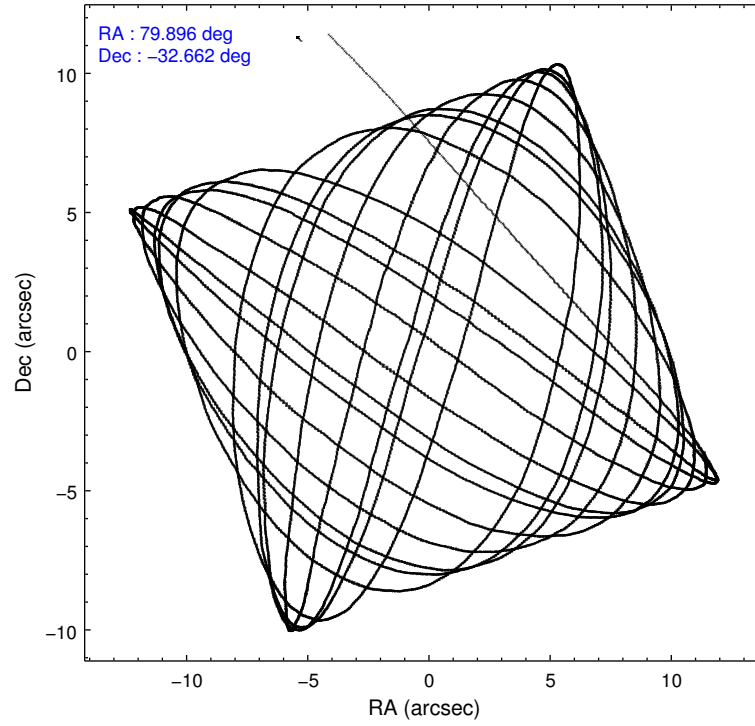
	<b>ccd 7</b>
level 1 events	182206
rejected events	98554
rejected %	54%

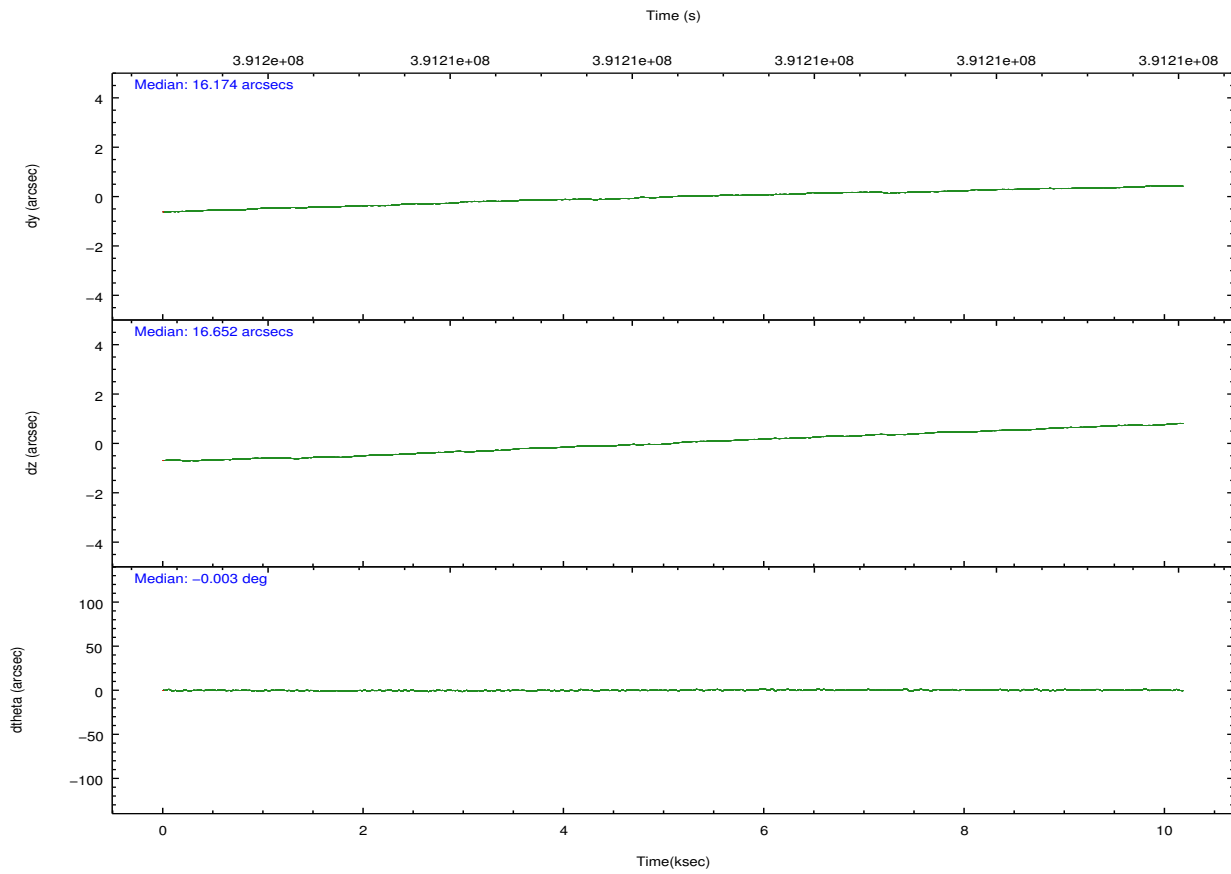
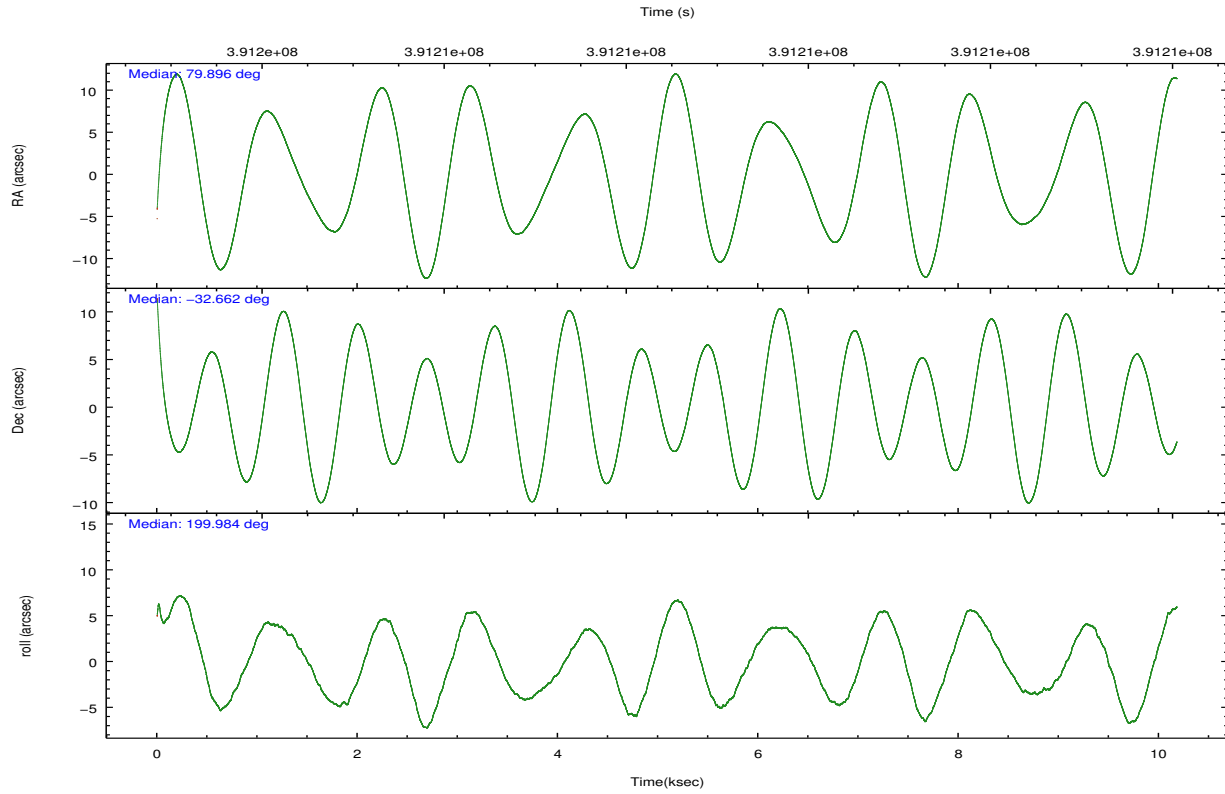
	<b>ccd 7</b>
grade 0 events	16337
	8%
grade 1 events	228
	0%
grade 2 events	22379
	12%
grade 3 events	6481
	3%
grade 4 events	6310
	3%
grade 5 events	9911
	5%
grade 6 events	32619
	17%
grade 7 events	87941
	48%

## 2.2 Compared Parameters

Parameter	Planned	Actual	Parameter	Planned	Actual
Instrument	ACIS	ACIS	Obspar format version number	7	7
Detector	ACIS-7	ACIS-7	Obspar file type	PREDICTED	ACTUAL
Grating	NONE	NONE	Obspar update status	NONE	UPDATED
Data mode	CC33_FAINT	CC33_FAINT	Number of optional ACIS chips dropped	0	0
Observation mode	POINTING	POINTING	On-chip summing requested	N	N
[deg] Pointing RA	79.916128	79.89563738975161	Subarray requested	NONE	NONE
[deg] Pointing Dec	-32.640399	-32.66159671553064	Alternating exposures requested	N	N
[deg] Pointing Roll	199.843420	199.9890018587739	[s] Primary exposure time	0.000000	0
[mm] SIM focus pos	-0.684267	-0.6828225247311905			
[mm] SIM defocus	0	0.001444936568705701			
[mm] SIM translation stage pos	-190.132523	-190.1400660498719			
[mm] SIM translation stage offset	0	0.00754346686406393			
[s] Observation start time (MET)	391203546.184000	391202603.52161			
Observation start date	2010-05-25T19:38:00	2010-05-25T19:23:23			
[s] Observation end time (MET)	391213546.184000	391214733.88473			
Observation end date	2010-05-25T22:24:40	2010-05-25T22:45:33			
Read mode	CONTINUOUS	CONTINUOUS			

## 2.3 Aspect



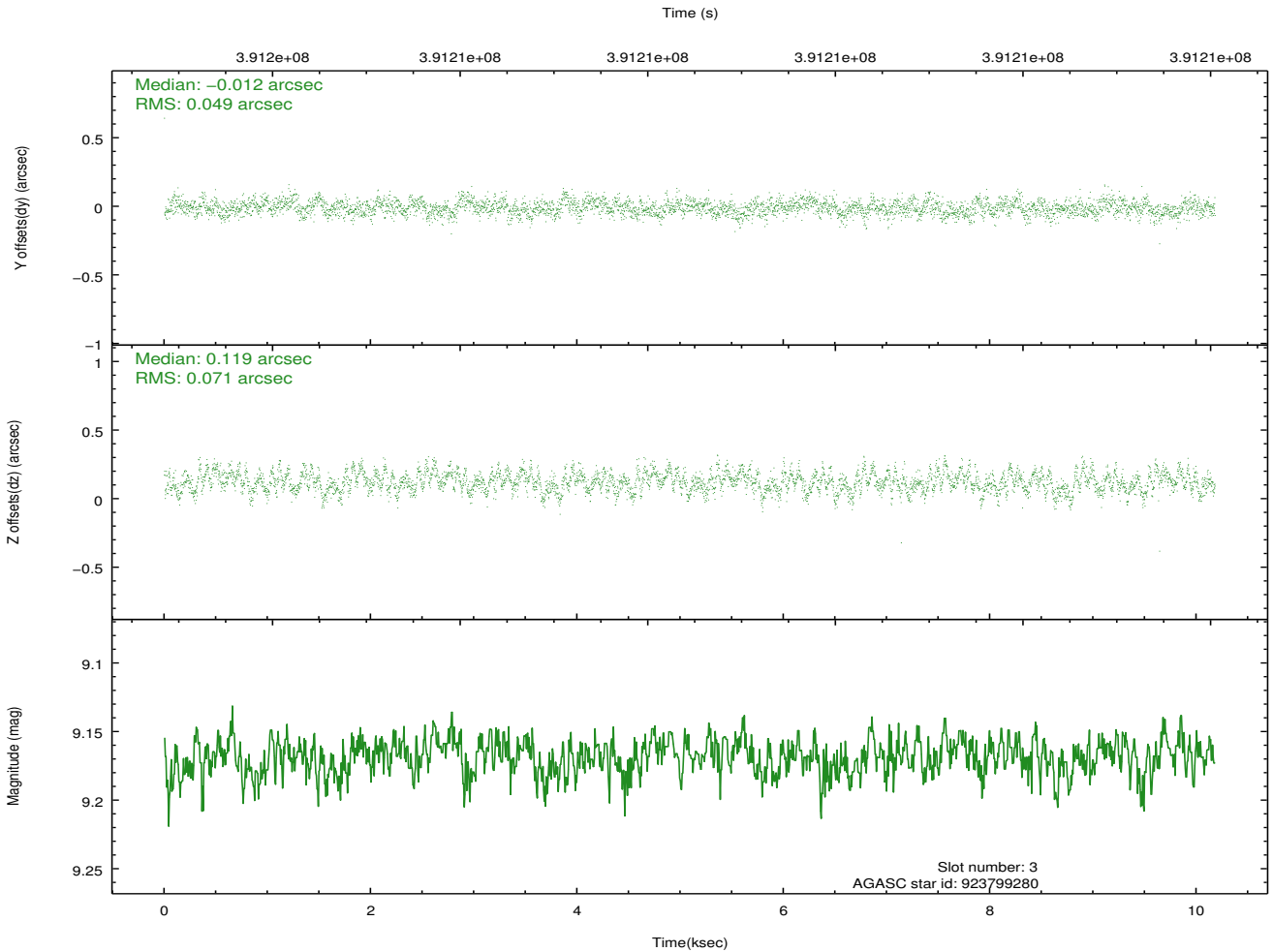
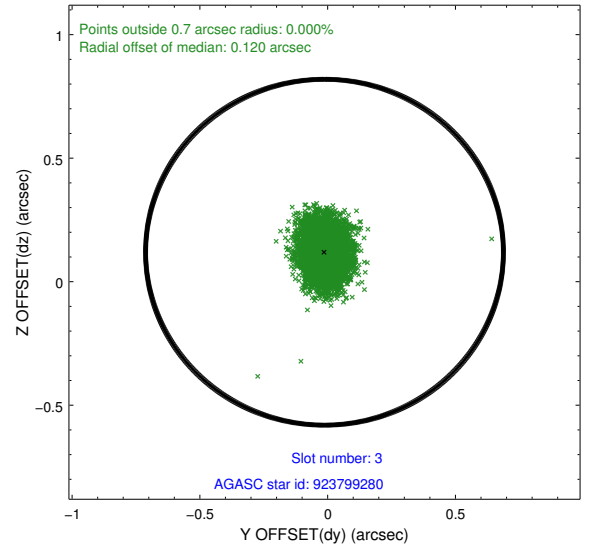
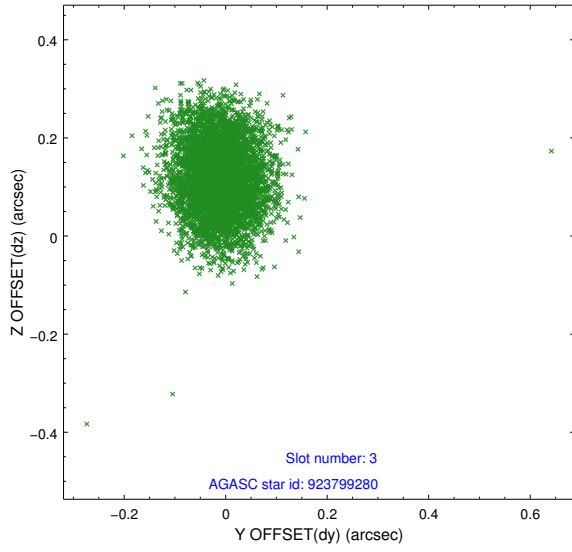


### Slot Statistics

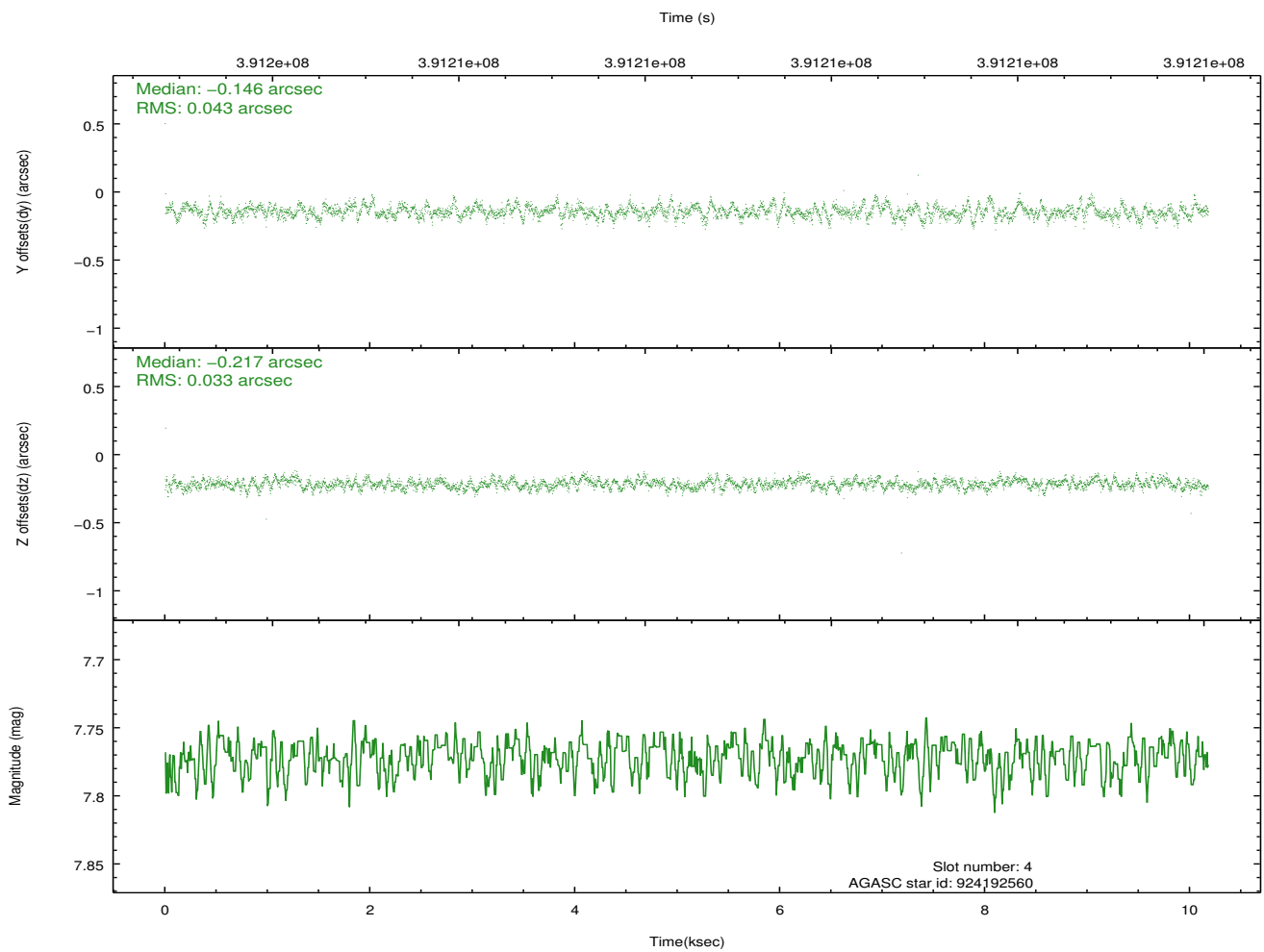
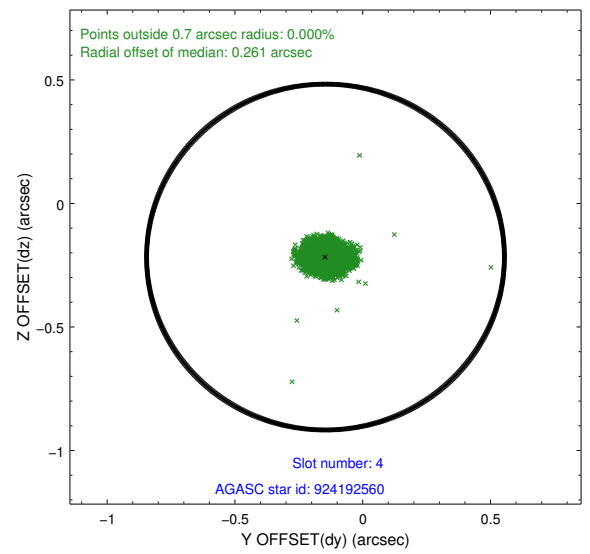
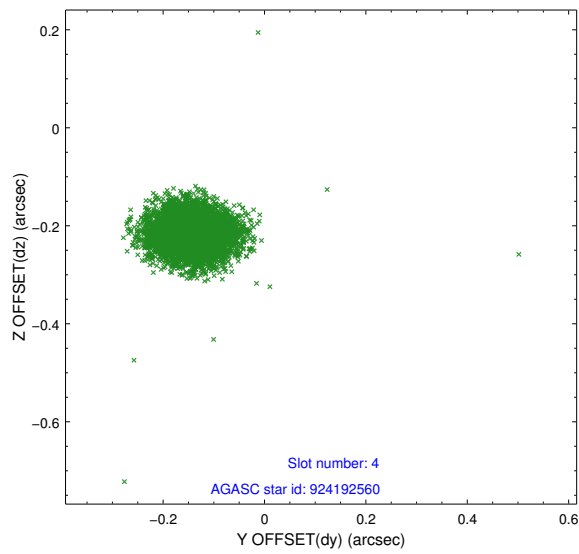
slot	status	id	mag	n_pts	med_dy	med_dz	dr1	dr2	ra	dec	mean_y	mean_z
0	FID	ACIS-S-1	6.96	2484	0.084	-0.060	0.016	0.026	0.000000	0.000000	926.90	-1733.82
1	FID	ACIS-S-2	6.90	2482	-0.175	-0.027	0.008	0.014	0.000000	0.000000	-768.97	-1738.80
2	FID	ACIS-S-4	6.97	2484	0.066	0.094	0.014	0.023	0.000000	0.000000	2143.98	169.89
3	GUIDE	923799280	9.17	4961	-0.012	0.119	0.091	0.148	80.234023	-31.921546	-1791.31	-2103.15
4	GUIDE	924192560	7.77	4965	-0.146	-0.217	0.056	0.091	80.544313	-32.539454	-1914.99	309.88
5	GUIDE	924194200	8.32	4966	0.030	-0.011	0.080	0.133	79.438502	-33.432791	2318.99	2199.59
6	GUIDE	923797728	8.61	4967	0.041	0.113	0.071	0.117	79.694448	-31.988137	-159.19	-2437.22
7	GUIDE	924195696	8.90	4961	0.081	-0.005	0.077	0.125	79.532624	-33.441289	2063.27	2322.73

## 2.4 Star Slots

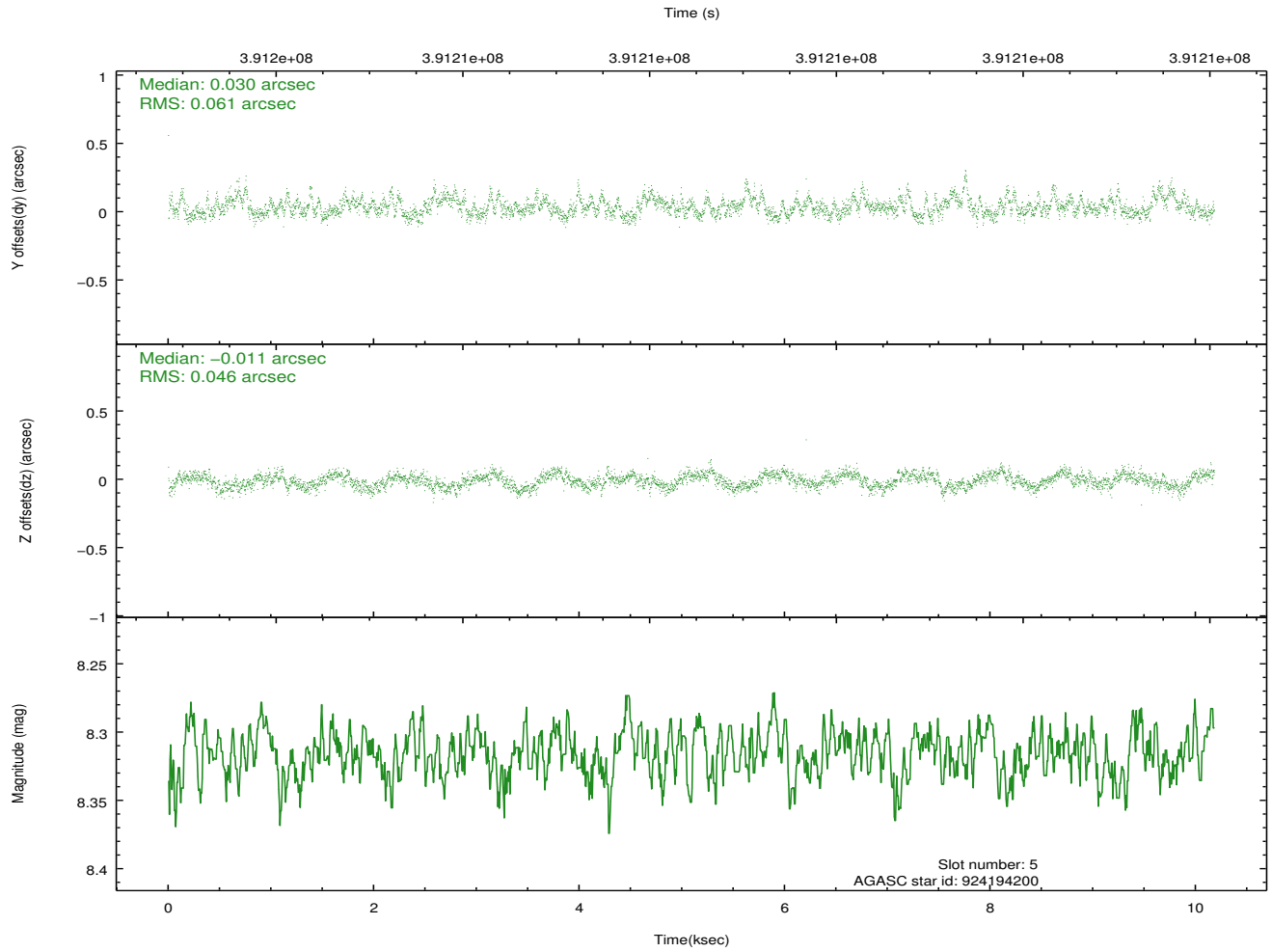
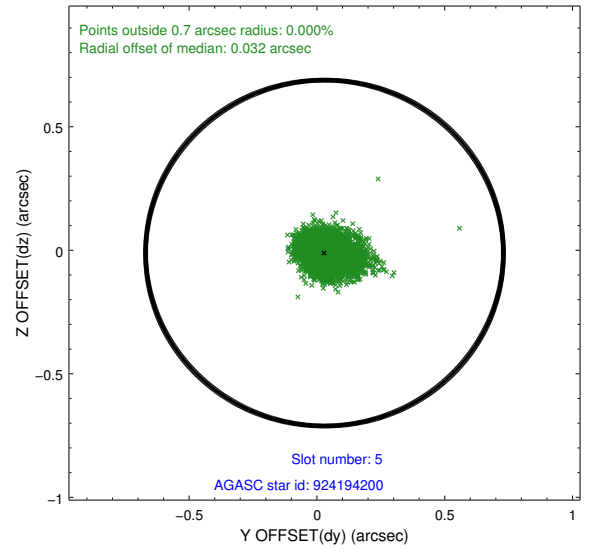
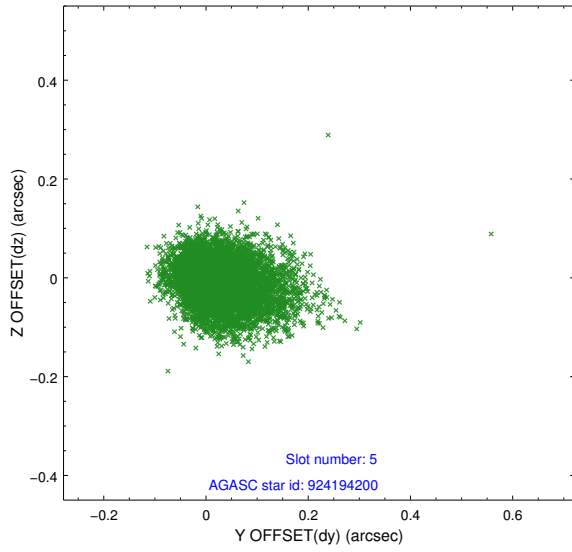
### 2.4.1 Slot 3



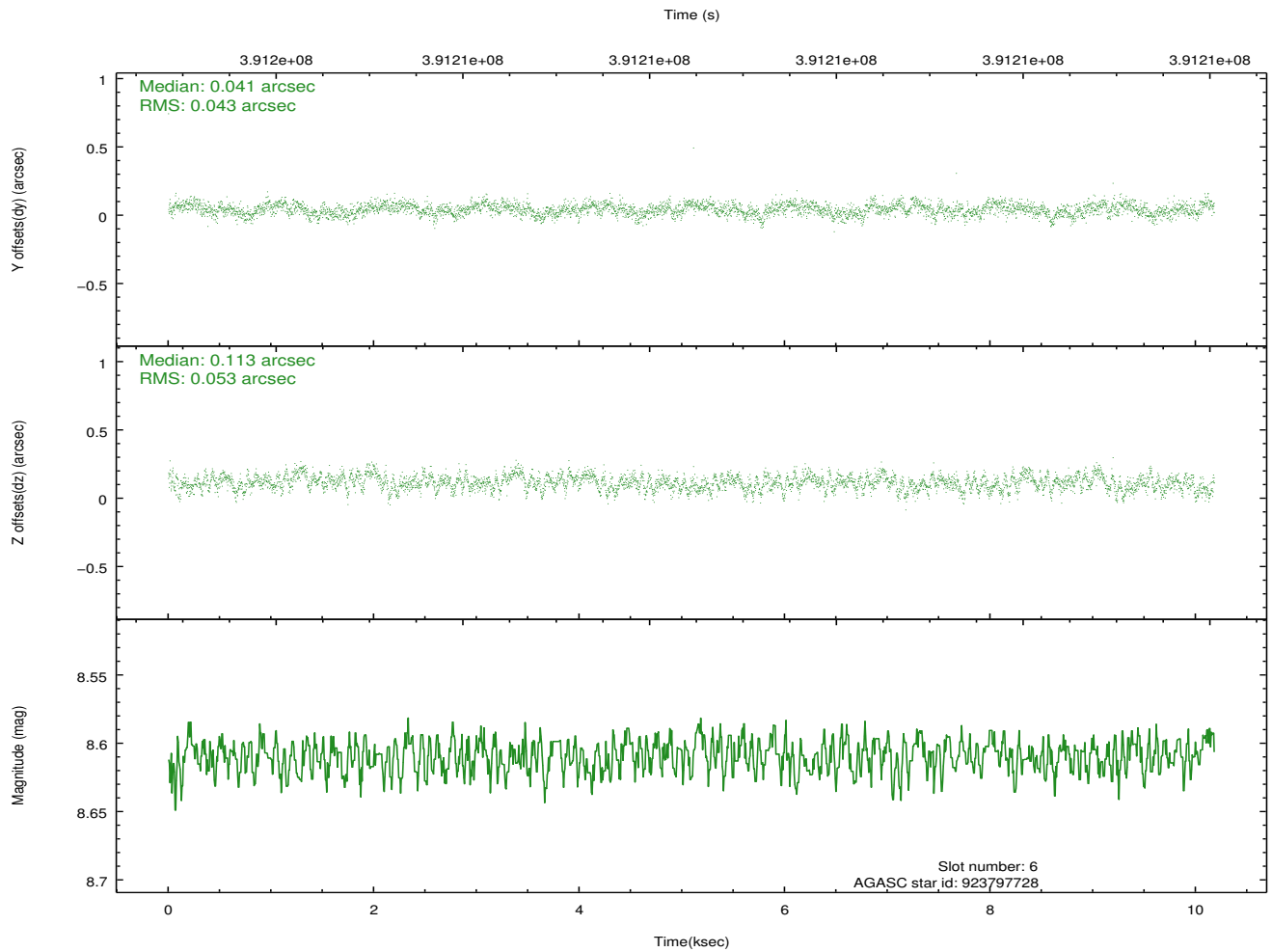
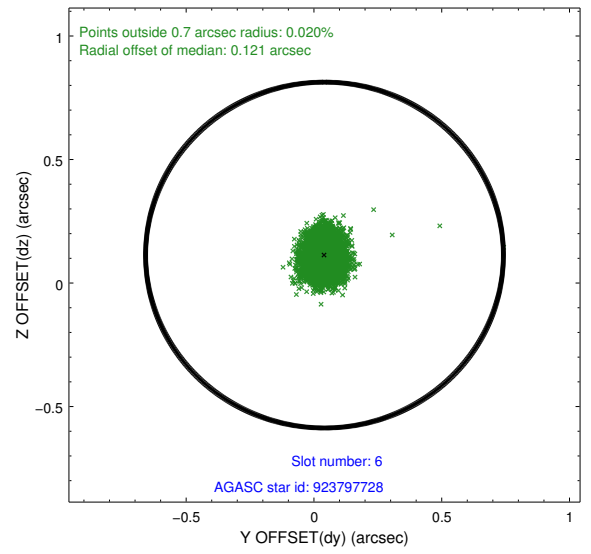
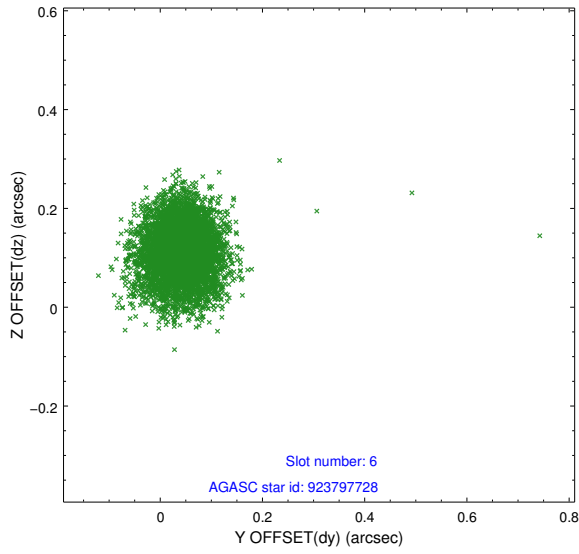
## 2.4.2 Slot 4



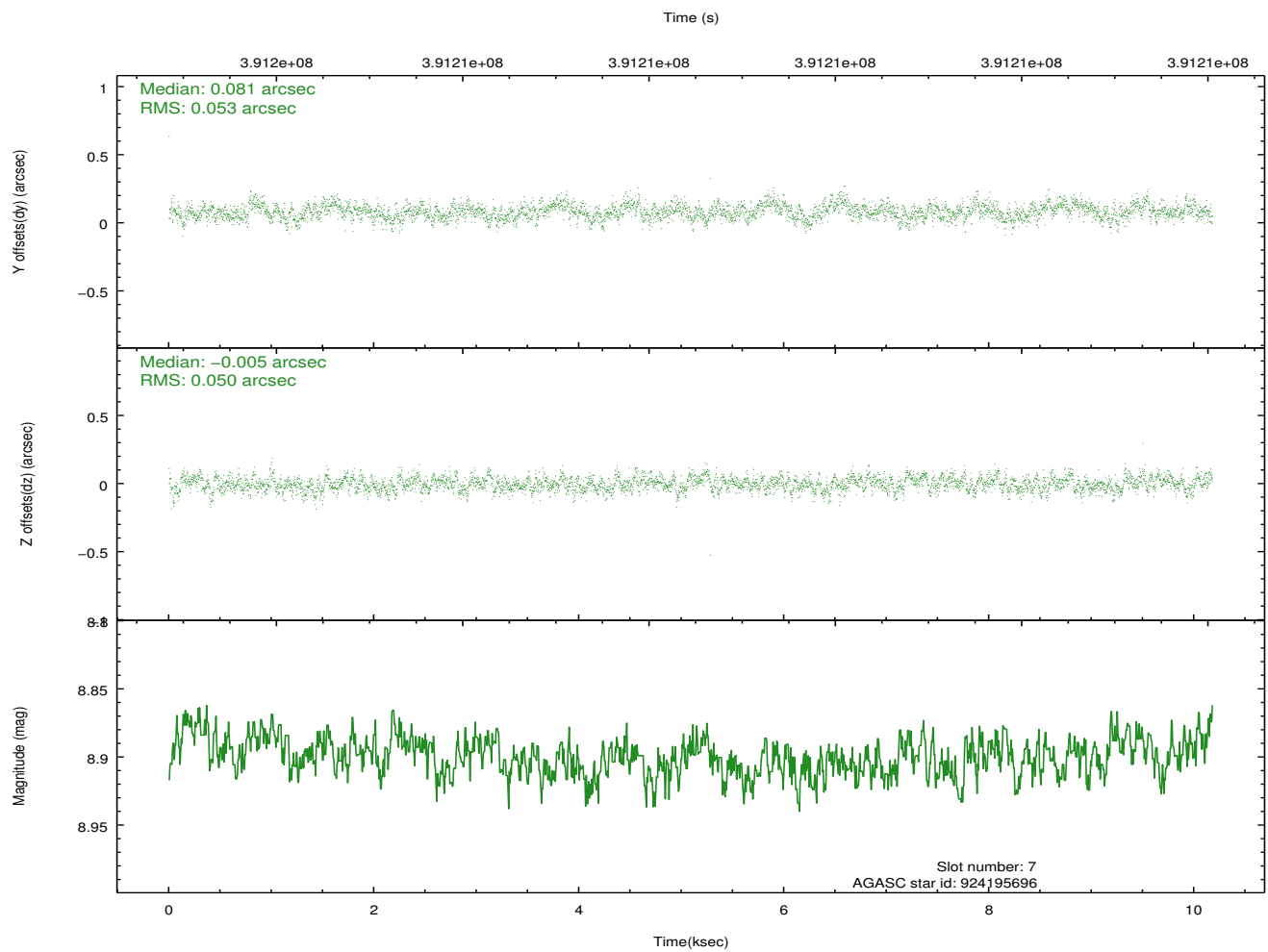
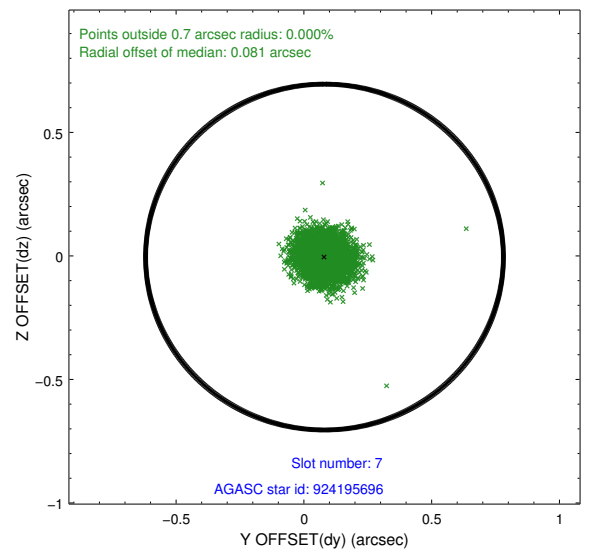
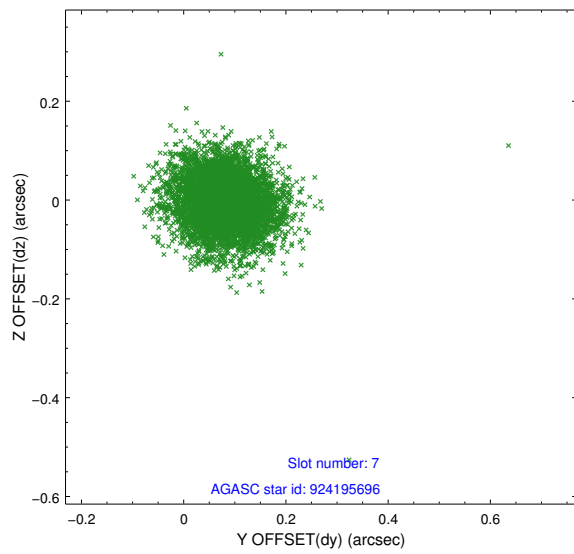
### 2.4.3 Slot 5



### 2.4.4 Slot 6

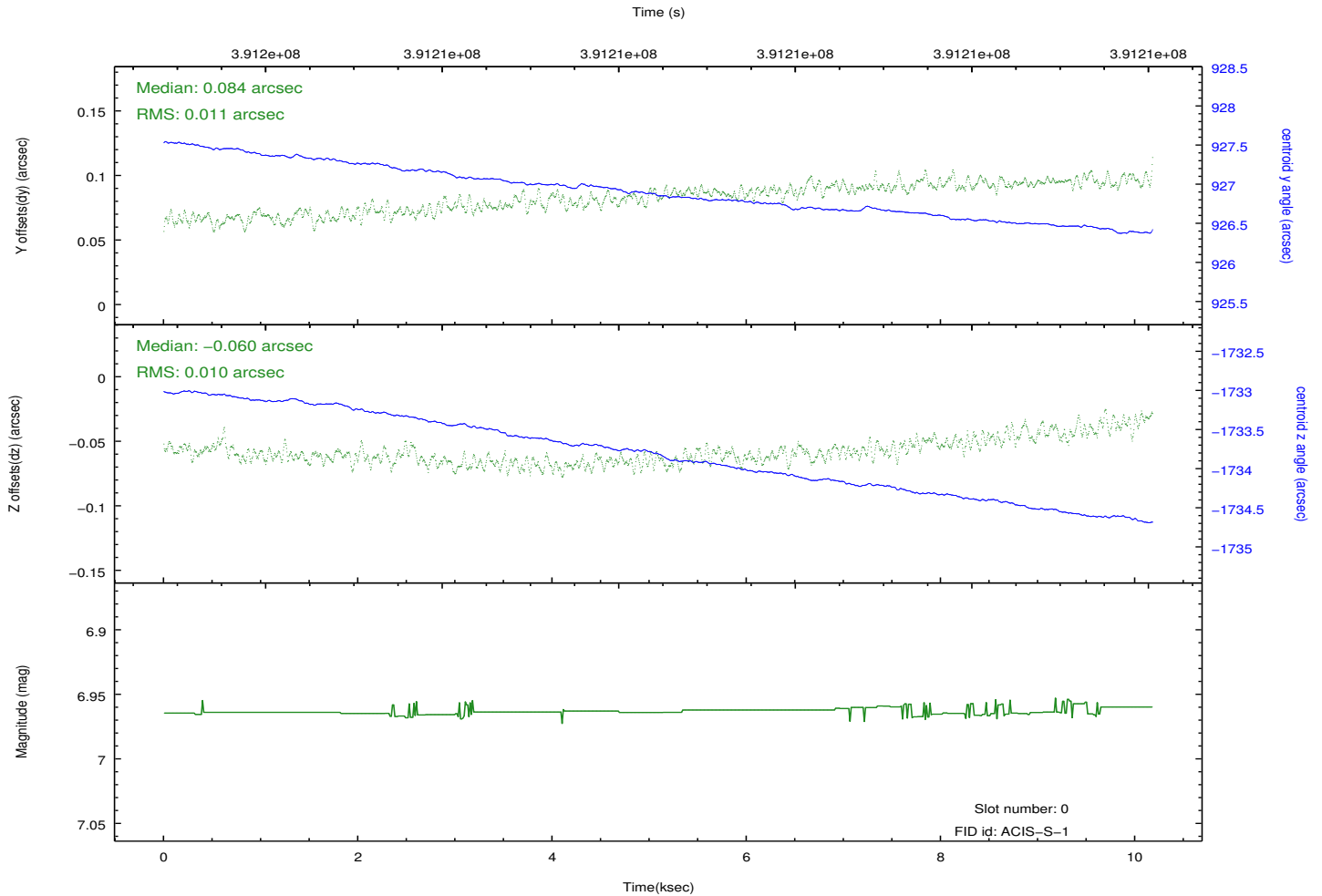
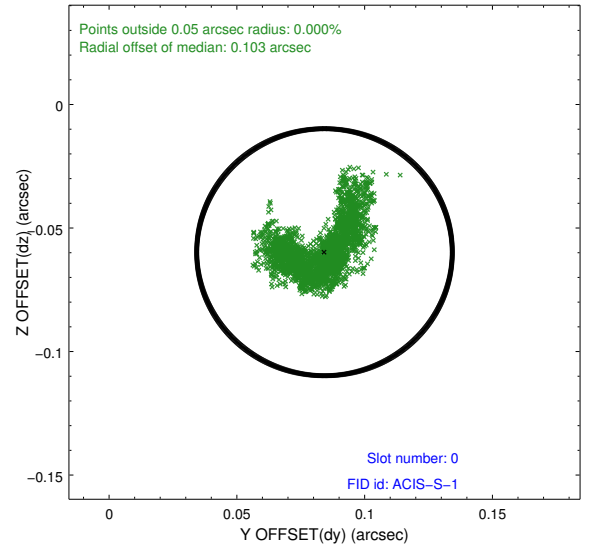
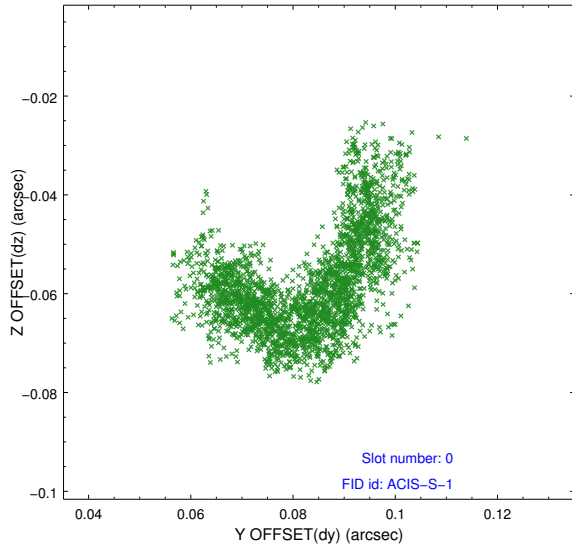


## 2.4.5 Slot 7

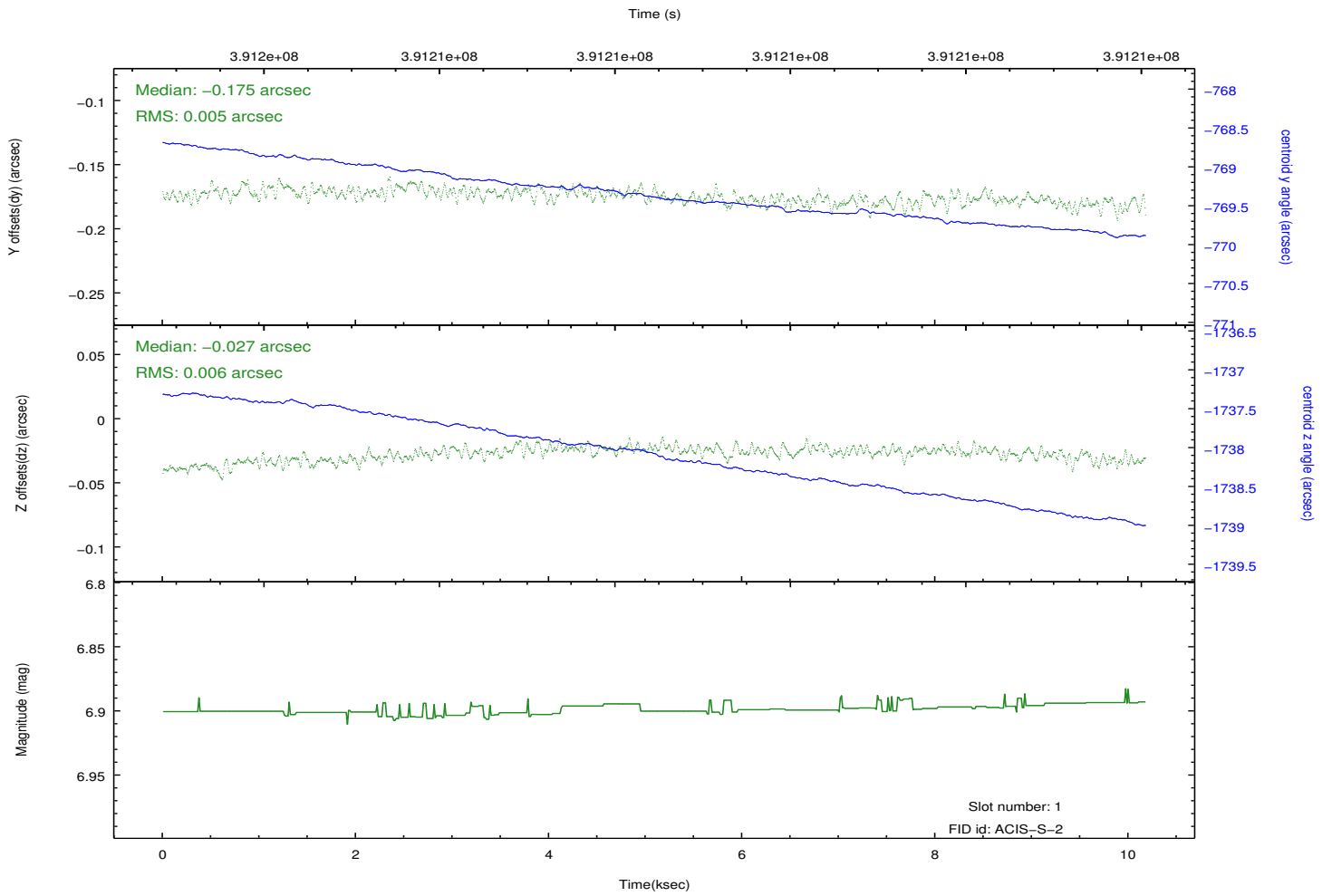
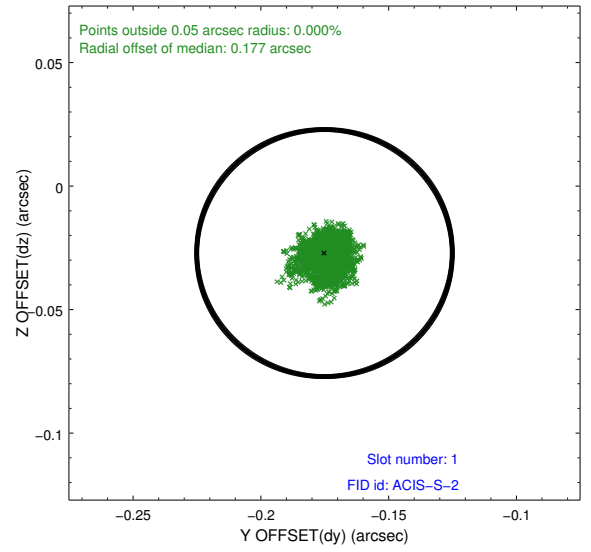
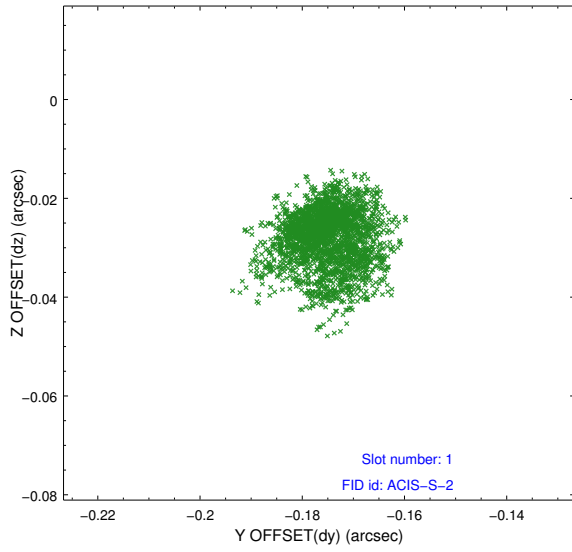


## 2.5 FID Slots

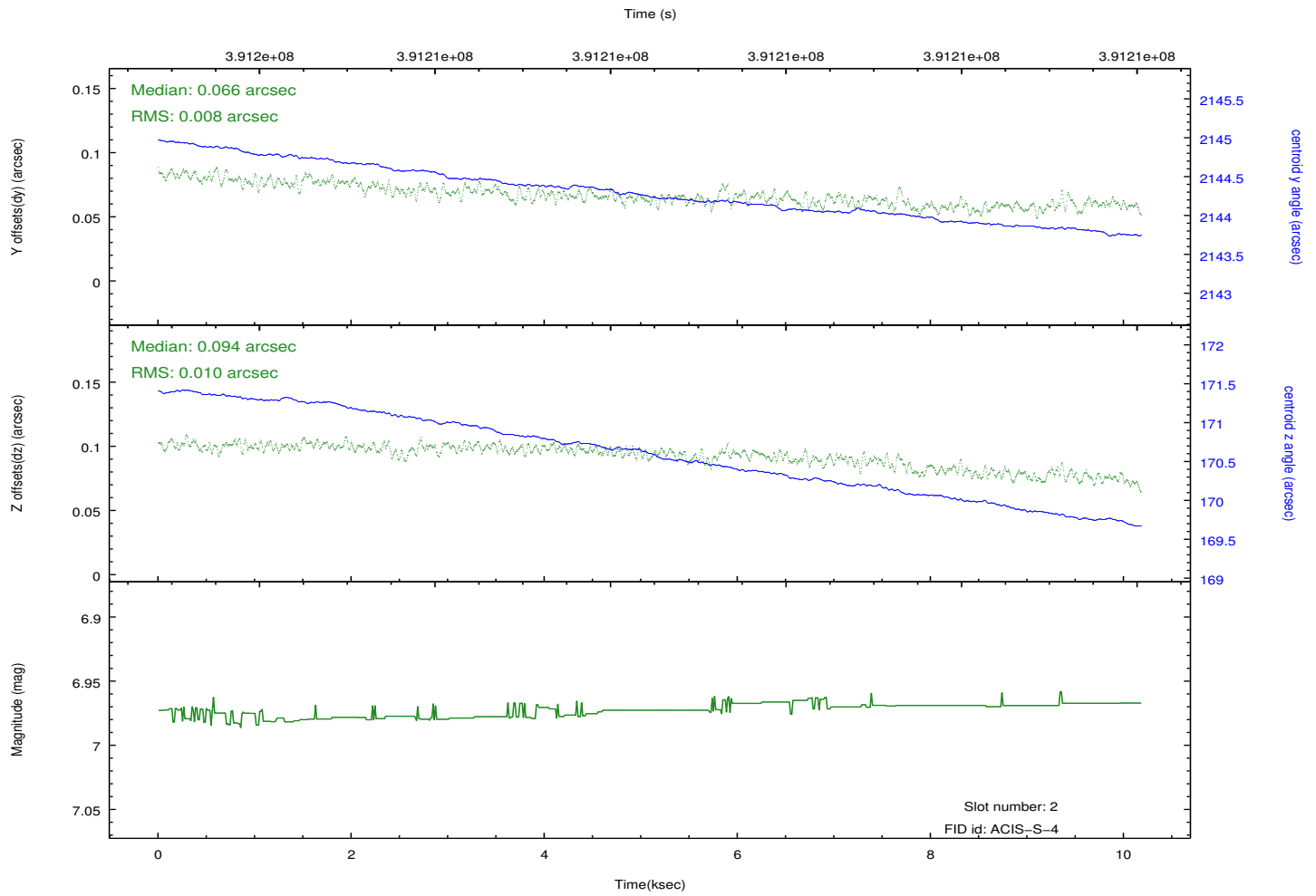
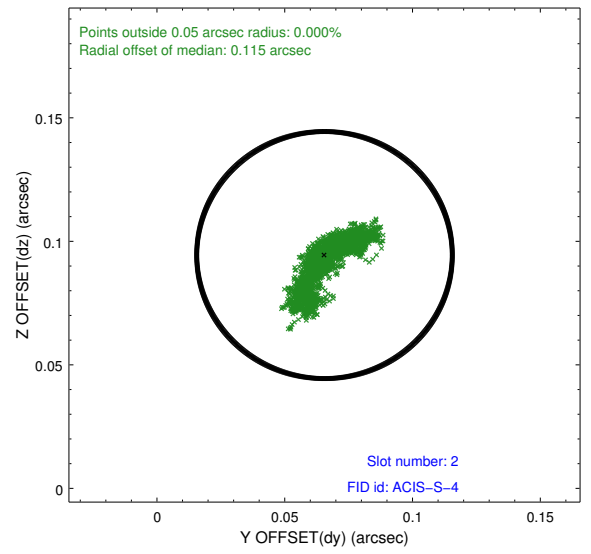
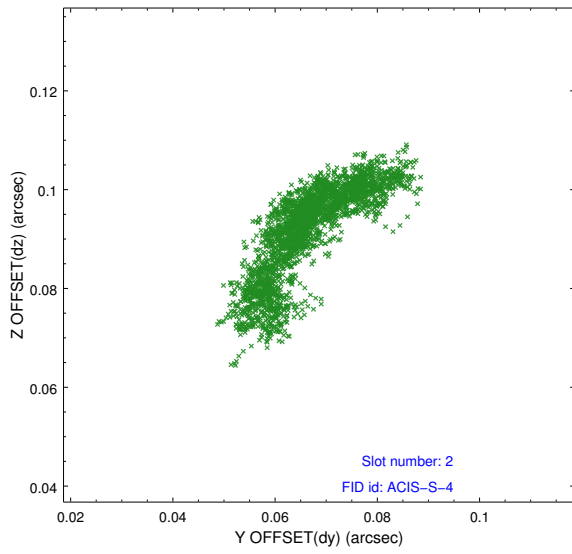
### 2.5.1 Slot 0



## 2.5.2 Slot 1



### 2.5.3 Slot 2



## A Summary

### A.1 Status

V&V Scientist	Joy Nichols
V&V Date (YYYY-MM-DD)	2012.06.26
V&V Edition	1
V&V Disposition and Status	OK
V&V Charge Time	10.1755

### A.2 Comments