

V&V Reference Report

L2 ASCDS Version : 8.4.5

Observation 11731 - L2 Version 2
Chandra X-Ray Center

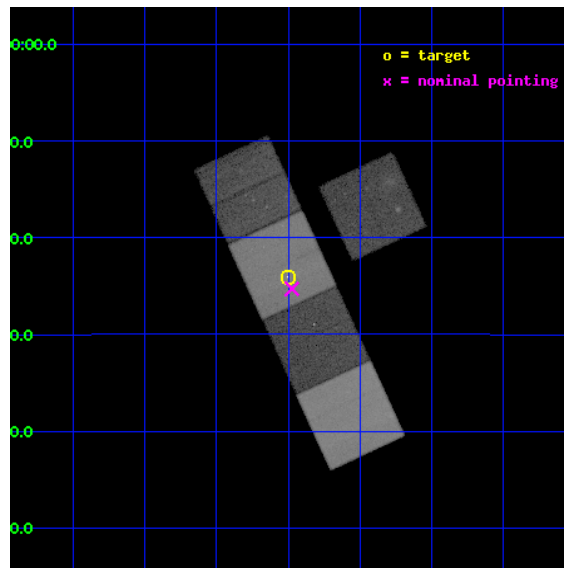
L2 Processing Date : Jun 24 2012

Contents

1	Front	2
2	OBI	3
2.1	OBI	3
2.1.1	Images	3
2.1.2	Bias	3
2.1.3	Parameters	4
2.1.4	Events	4
2.2	Compared Parameters	5
2.3	Aspect	6
2.4	Star Slots	9
2.4.1	Slot 3	9
2.4.2	Slot 4	10
2.4.3	Slot 5	11
2.4.4	Slot 6	12
2.4.5	Slot 7	13
2.5	FID Slots	14
2.5.1	Slot 0	14
2.5.2	Slot 1	15
2.5.3	Slot 2	16
A	Summary	17
A.1	Status	17
A.2	Comments	17

1 Front

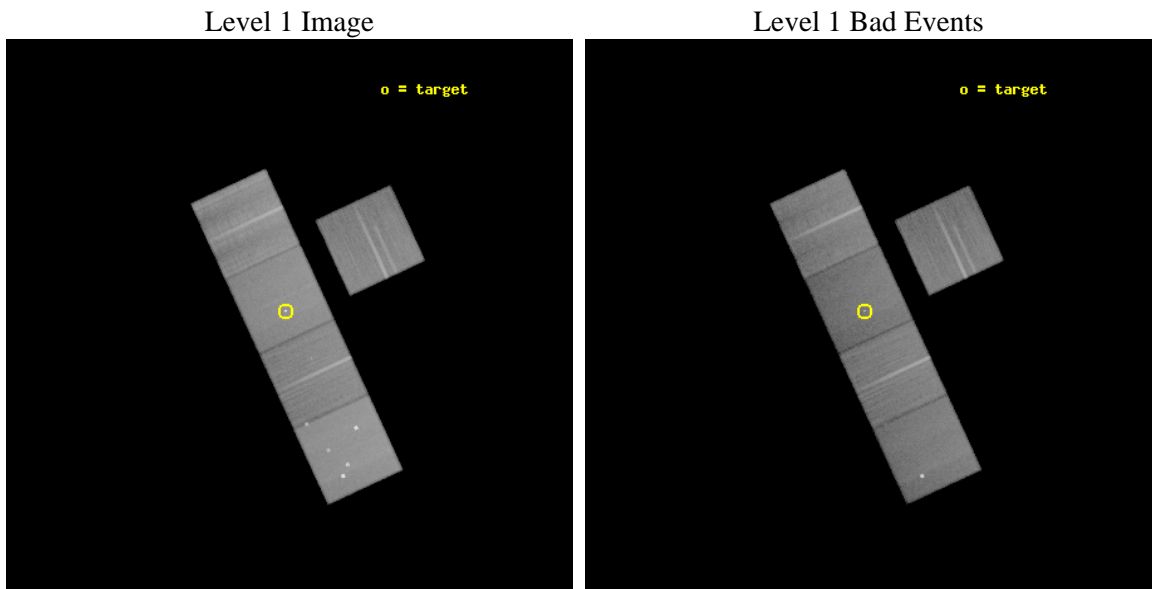
seq_num	800871	Sequence number
obs_id	11731	Observation id
title	The X-ray Luminous Cluster underlying the z=1.04 blazar PKS 1229-02: Does it have a cool core?	Proposal title
observer	Professor Andrew Fabian	Principal investigator
object	PKS 1229-02	Source name
dtcycle	0	
cycle	P	events from which exps? Prim/Second/Both
ra_targ	188.0	Observer's specified target RA [deg]
dec_targ	-2.401472	Observer's specified target Dec [deg]
ra_nom	187.99354726928	Nominal RA [deg]
dec_nom	-2.4214005028322	Nominal Dec [deg]
roll_nom	245.21649583662	Nominal Roll [deg]
revision	2	Processing version of data
ontime	48183.300370574	Sum of GTIs [s]
livetime	47553.750079203	Livetime [s]
ontime3	48173.877319515	Sum of GTIs [s]
ontime5	48183.300370574	Sum of GTIs [s]
ontime6	48180.159350216	Sum of GTIs [s]
ontime7	48183.300370574	Sum of GTIs [s]
ontime8	48173.877309859	Sum of GTIs [s]
l2events	572756	Number of level 2 events



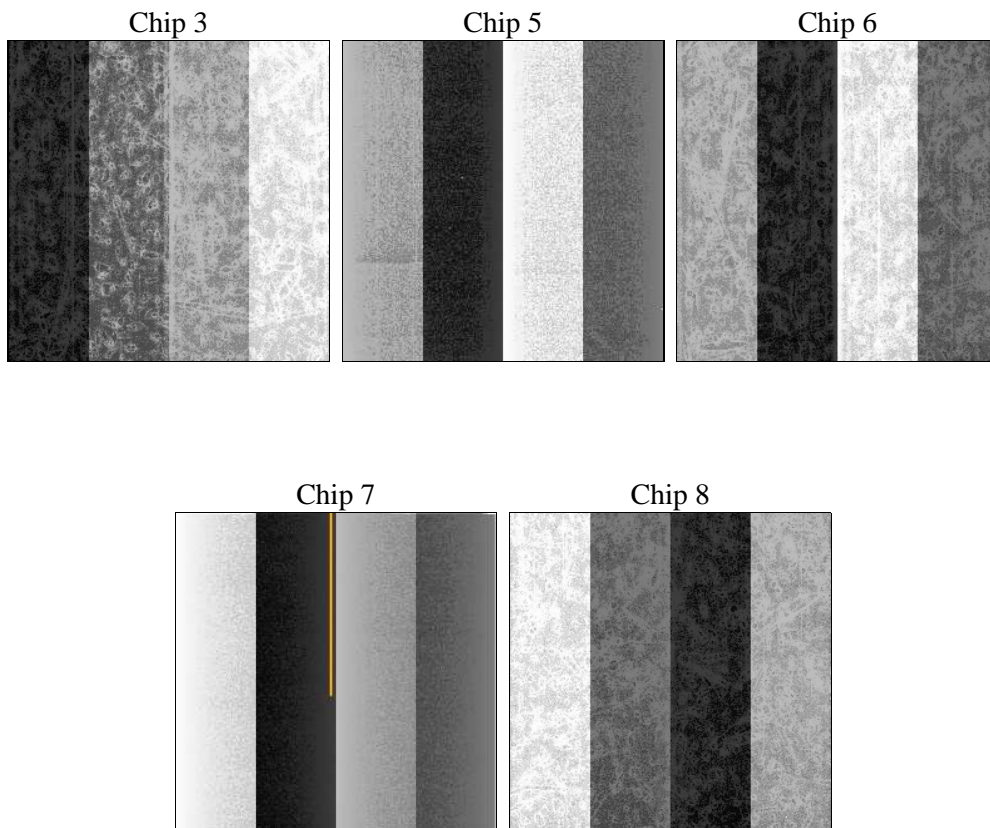
2 OBI

2.1 OBI

2.1.1 Images



2.1.2 Bias



2.1.3 Parameters

obi_num	0	Obi number	sched_exp_time	48000.000000	[s] Scheduled observation exposure time
ascdsver	8.4.5	Processing system revision	ontime	48183.300370574	Sum of GTIs [s]
caldbver	4.4.10	 	ontime3	48173.877319515	Sum of GTIs [s]
date	2012-06-24T23:33:45	Date and time of file creation	ontime5	48183.300370574	Sum of GTIs [s]
revision	2	Processing version of data	ontime6	48180.159350216	Sum of GTIs [s]
			ontime7	48183.300370574	Sum of GTIs [s]
			ontime8	48173.877309859	Sum of GTIs [s]
			l1events	2251106	Number of level 1 events

2.1.4 Events

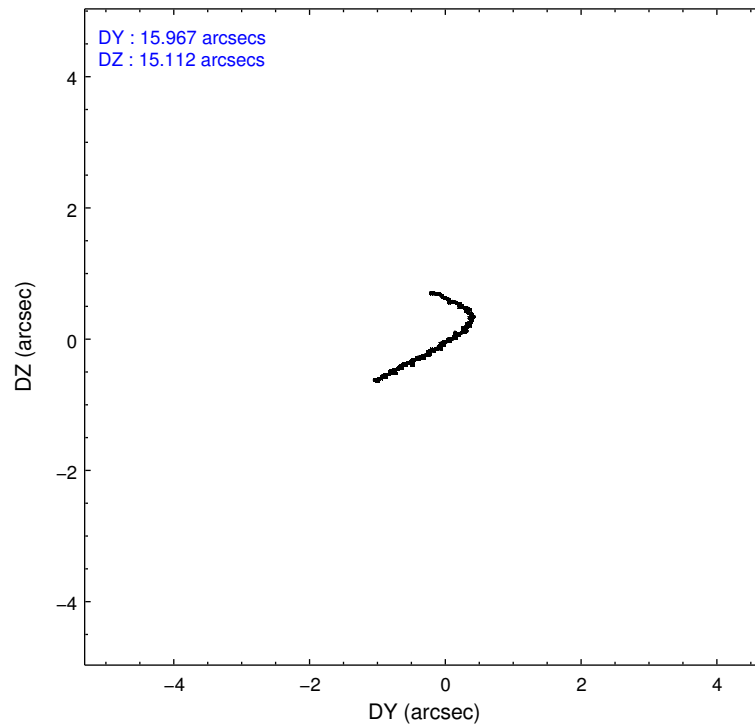
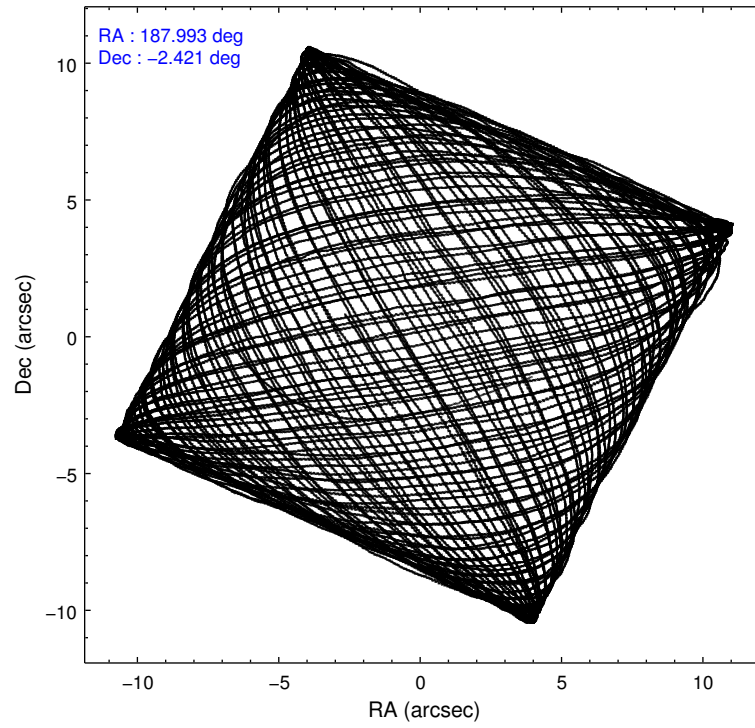
	ccd 3	ccd 5	ccd 6	ccd 7	ccd 8
level 1 events	360865	582693	375309	458540	473699
rejected events	322632	292045	334625	247834	352595
rejected %	89%	50%	89%	54%	74%

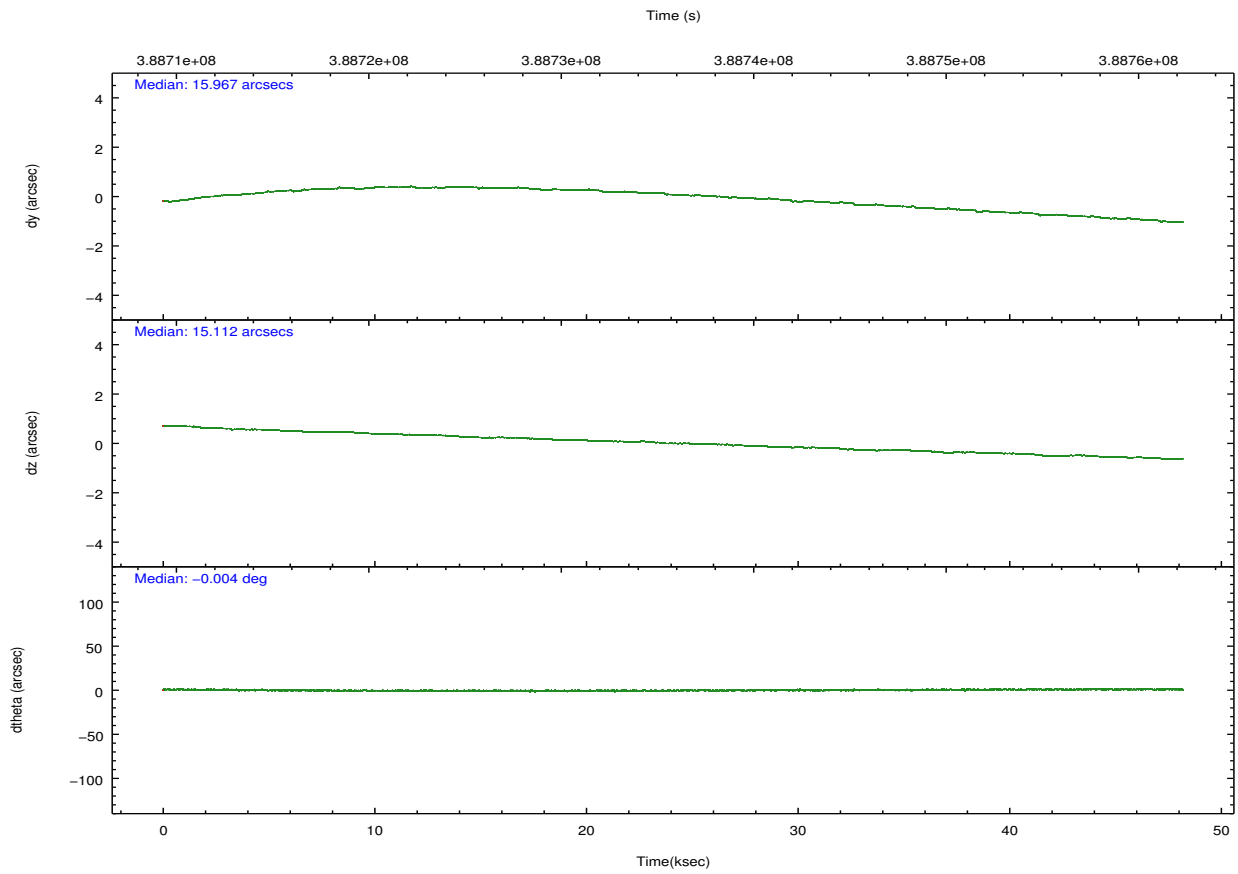
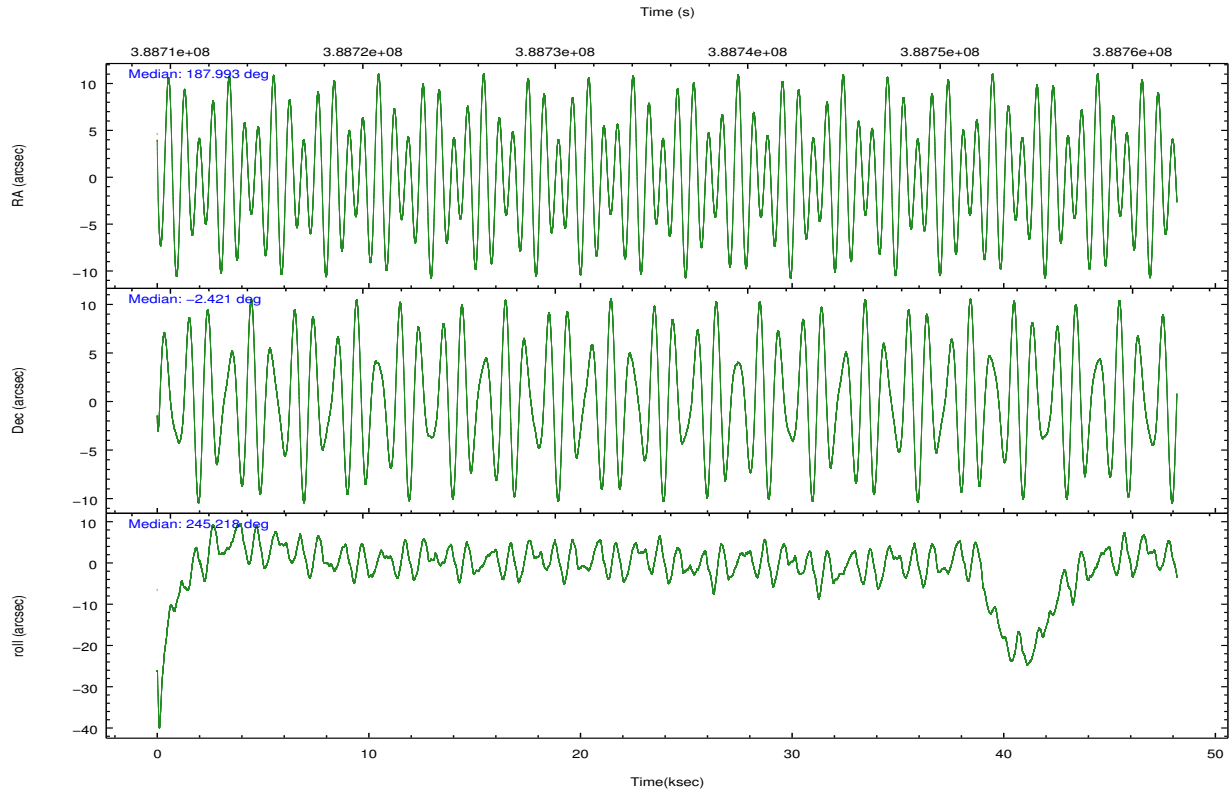
	ccd 3	ccd 5	ccd 6	ccd 7	ccd 8
grade 0 events	14185	41512	14176	21455	35868
	3%	7%	3%	4%	7%
grade 1 events	202	1064	195	737	397
	0%	0%	0%	0%	0%
grade 2 events	8403	85634	9270	43817	28699
	2%	14%	2%	9%	6%
grade 3 events	4147	11250	4370	19169	13011
	1%	1%	1%	4%	2%
grade 4 events	4185	10179	4328	19036	11944
	1%	1%	1%	4%	2%
grade 5 events	16469	43965	16506	47230	23770
	4%	7%	4%	10%	5%
grade 6 events	7634	144566	8918	109030	32690
	2%	24%	2%	23%	6%
grade 7 events	305640	244523	317546	198066	327320
	84%	41%	84%	43%	69%

2.2 Compared Parameters

Parameter	Planned	Actual	Parameter	Planned	Actual
Instrument	ACIS	ACIS	Obspar format version number	7	7
Detector	ACIS-35678	ACIS-35678	Obspar file type	PREDICTED	ACTUAL
Grating	NONE	NONE	Obspar update status	NONE	UPDATED
Data mode	VFAINT	VFAINT	Number of optional ACIS chips dropped	0	0
Observation mode	POINTING	POINTING	On-chip summing requested	N	N
[deg] Pointing RA	187.990687	187.9935472692846	Subarray requested	NONE	NONE
[deg] Pointing Dec	-2.394209	-2.421400502832184	Alternating exposures requested	N	N
[deg] Pointing Roll	245.059740	245.2164958366168	[s] Primary exposure time	0.000000	3.1
[mm] SIM focus pos	-0.684267	-0.6828225247311905			
[mm] SIM defocus	0	0.001444936568705701			
[mm] SIM translation stage pos	-190.132523	-190.145094680475			
[mm] SIM translation stage offset	0	0.01257209746719923			
[s] Observation start time (MET)	388711896.184000	388710687.45732			
Observation start date	2010-04-26T23:30:30	2010-04-26T23:11:27			
[s] Observation end time (MET)	388759896.184000	388760704.38487			
Observation end date	2010-04-27T12:50:30	2010-04-27T13:05:04			
Read mode	TIMED	TIMED			

2.3 Aspect



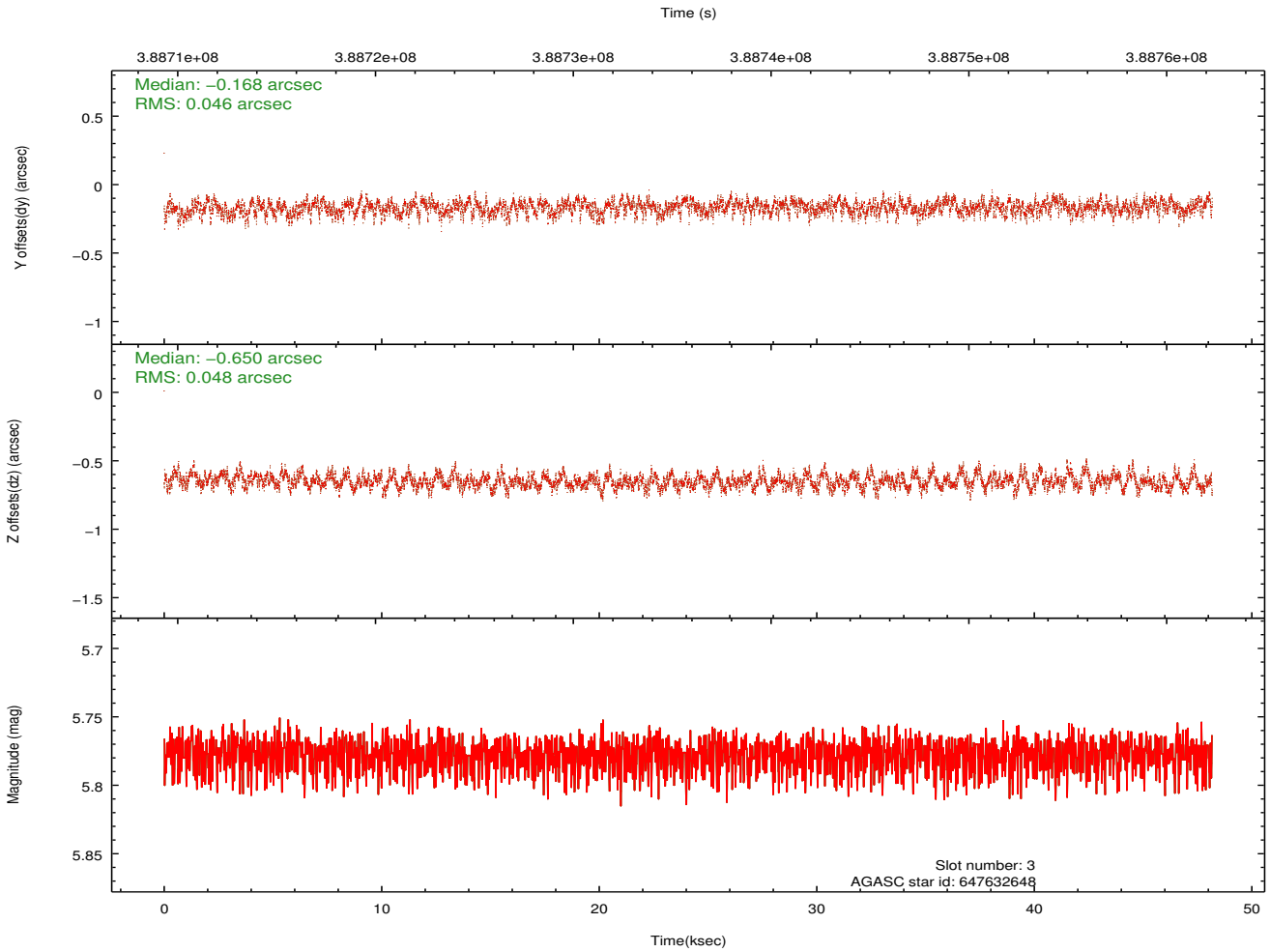
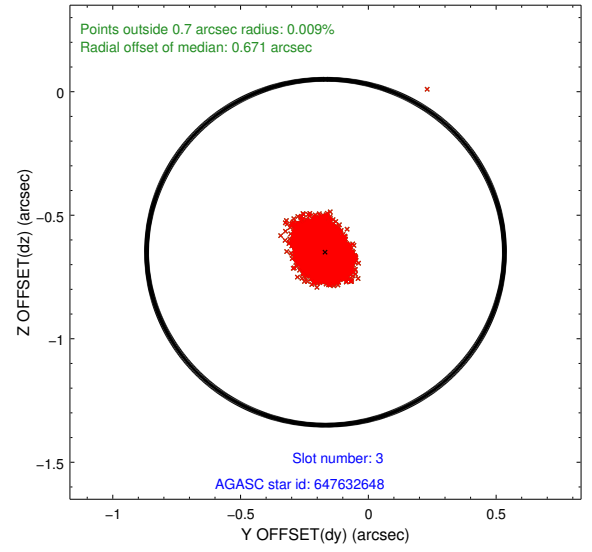
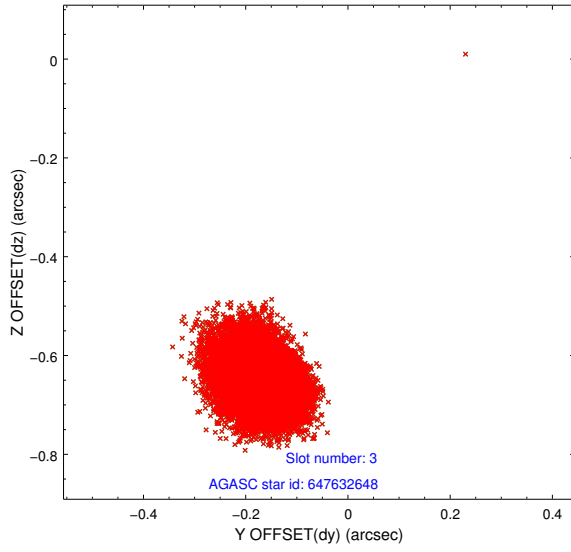


Slot Statistics

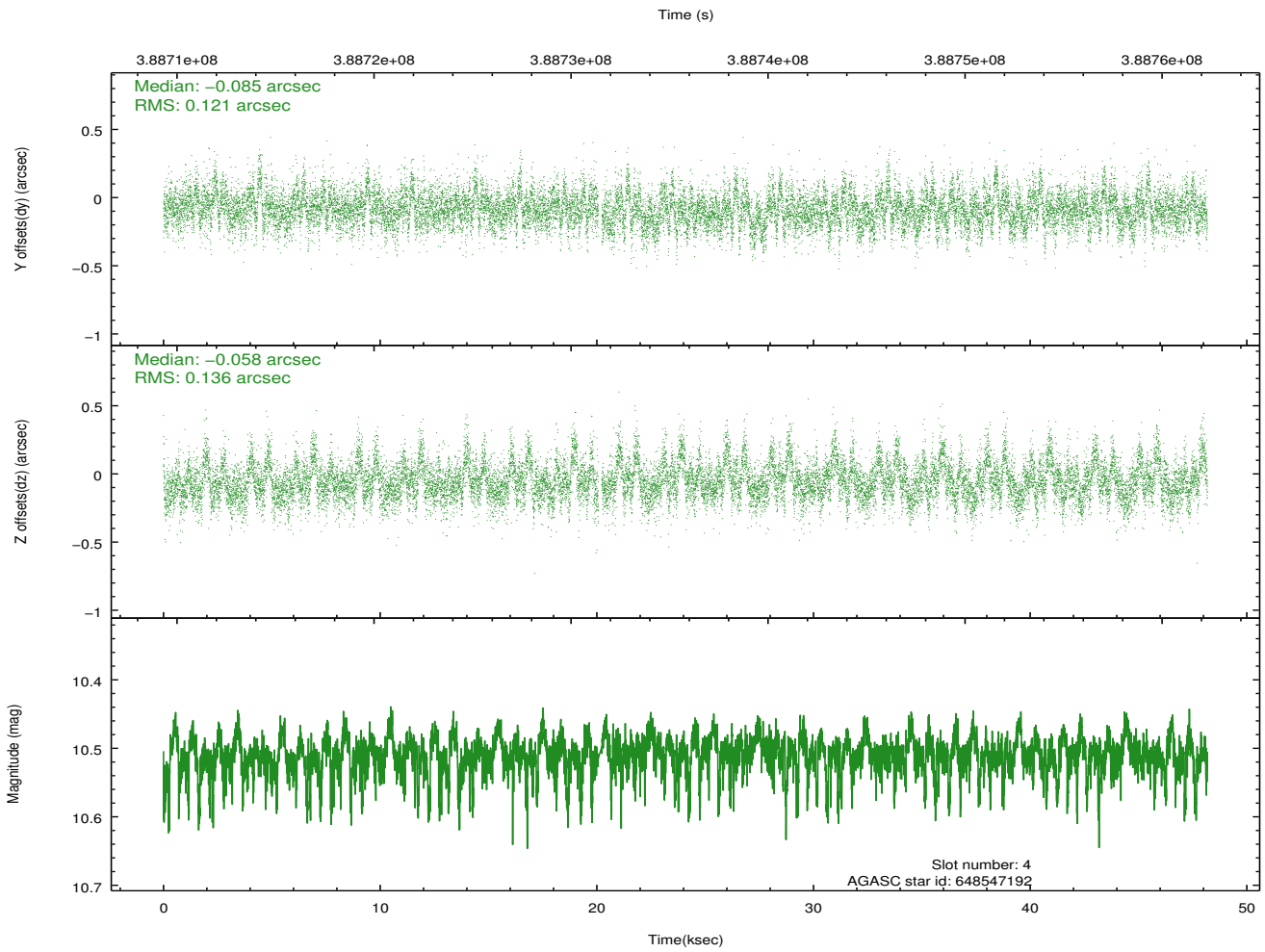
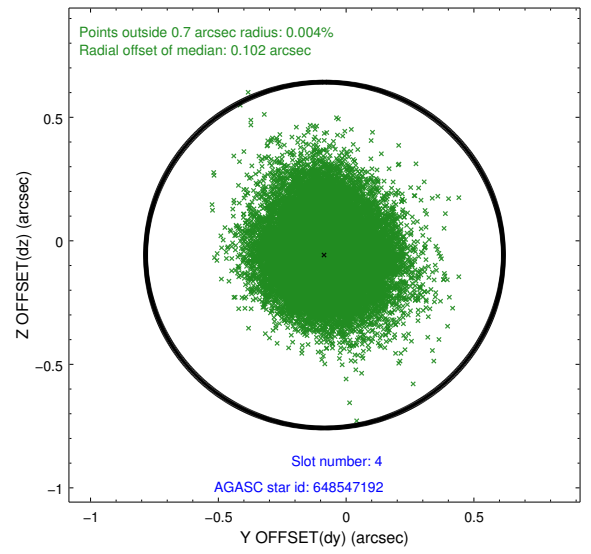
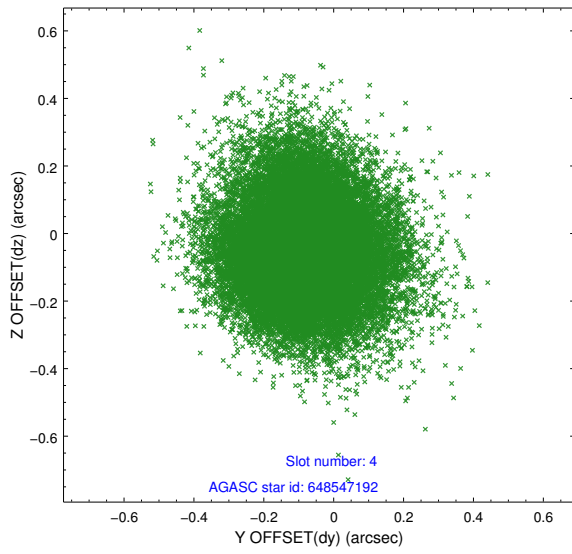
slot	status	id	mag	n_pts	med_dy	med_dz	dr1	dr2	ra	dec	mean_y	mean_z
0	FID	ACIS-S-2	6.92	11754	-0.097	-0.029	0.010	0.021	0.000000	0.000000	-768.93	-1736.44
1	FID	ACIS-S-4	7.01	11754	0.190	0.055	0.007	0.020	0.000000	0.000000	2144.63	172.16
2	FID	ACIS-S-5	7.04	11753	-0.123	-0.017	0.009	0.031	0.000000	0.000000	-1821.83	165.72
3	BAD	647632648	5.78	11754	-0.168	-0.650	0.071	0.113	187.290383	-2.429568	1177.78	-2229.85
4	GUIDE	648547192	10.51	23383	-0.085	-0.058	0.192	0.317	188.710565	-2.078795	-2120.16	1870.15
5	GUIDE	648547624	10.20	23406	0.105	0.103	0.167	0.264	188.441157	-2.334101	-879.33	1378.91
6	GUIDE	648550752	9.22	23423	0.054	0.017	0.149	0.235	187.581348	-1.942523	-853.25	-2020.50
7	GUIDE	648939216	10.06	23474	0.044	0.247	0.188	0.328	188.170028	-3.143856	2175.57	1722.58

2.4 Star Slots

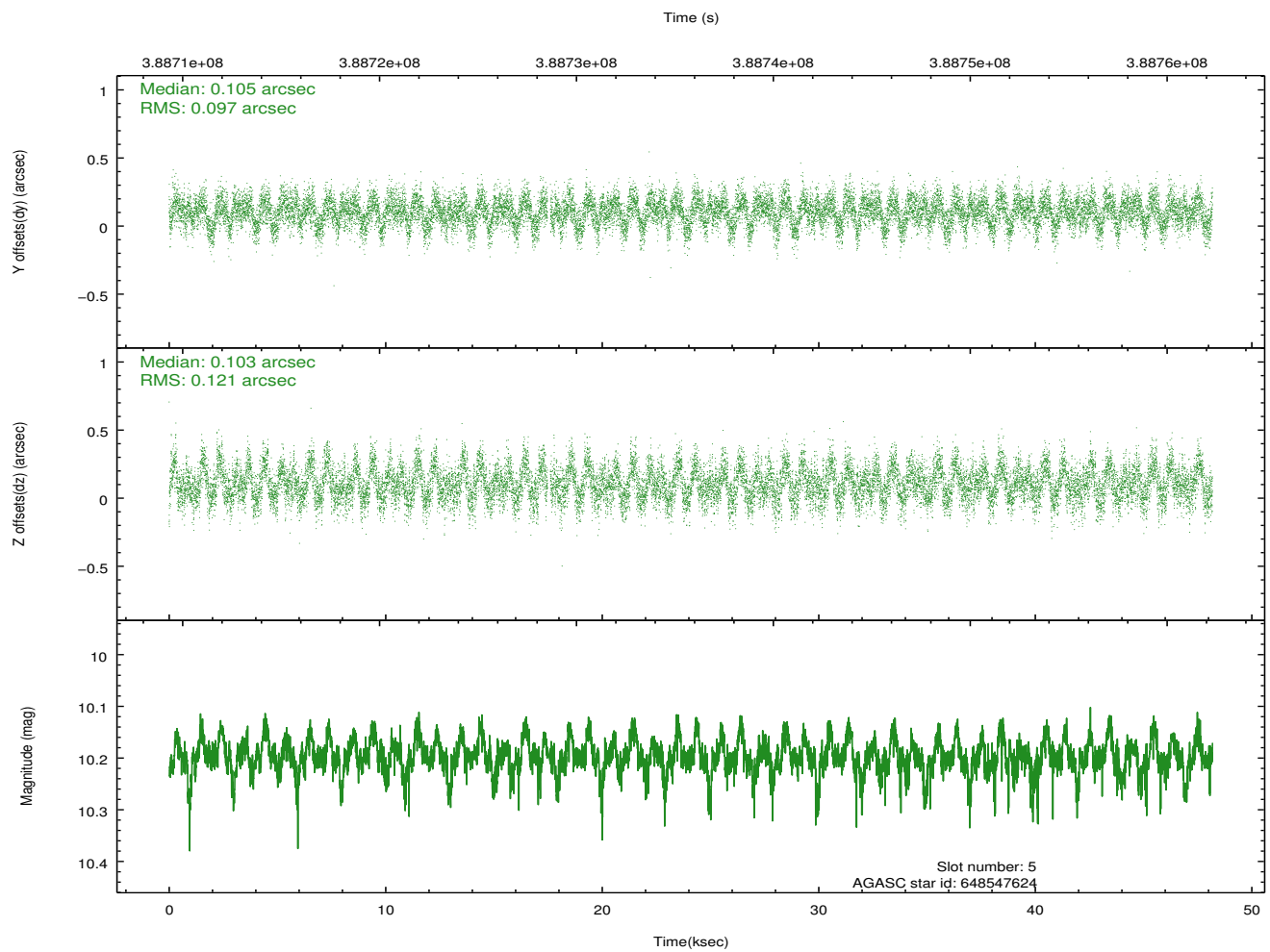
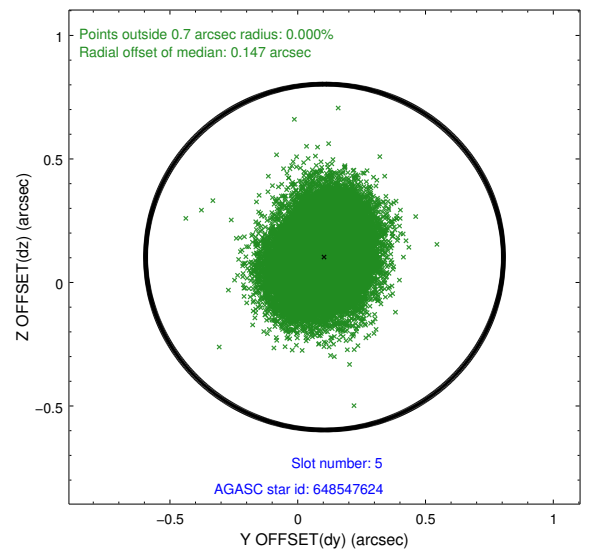
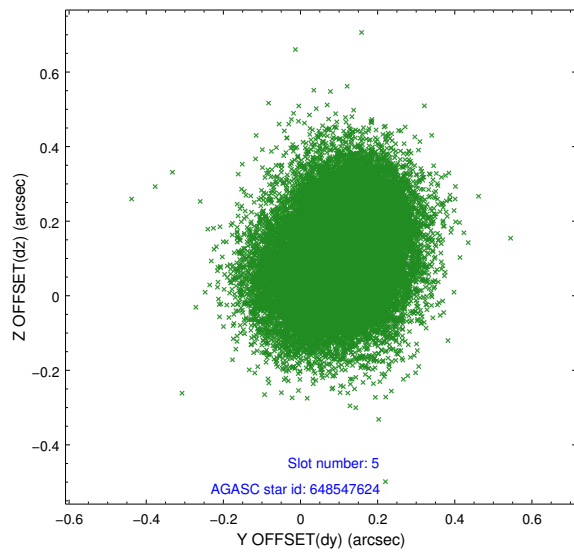
2.4.1 Slot 3



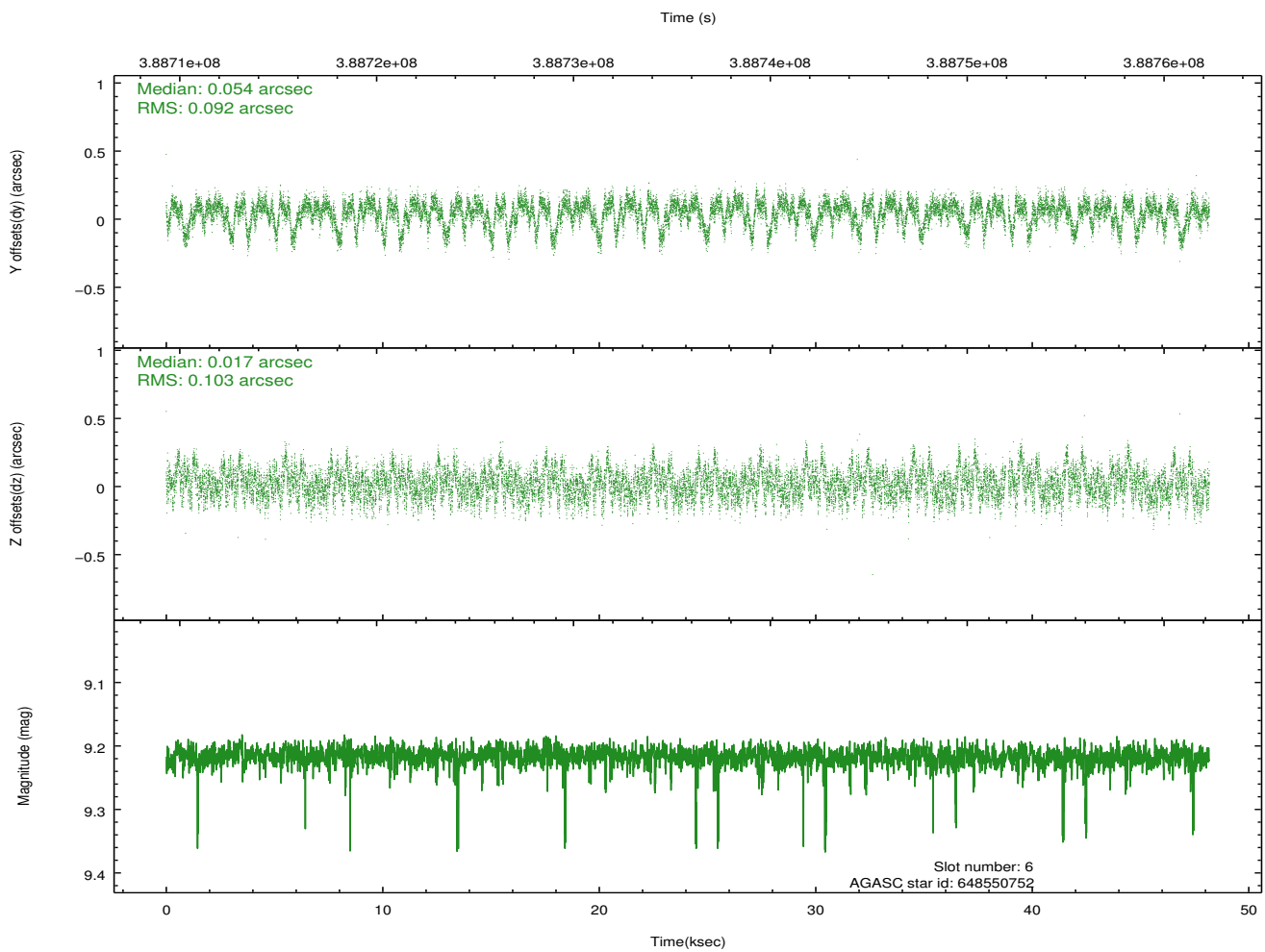
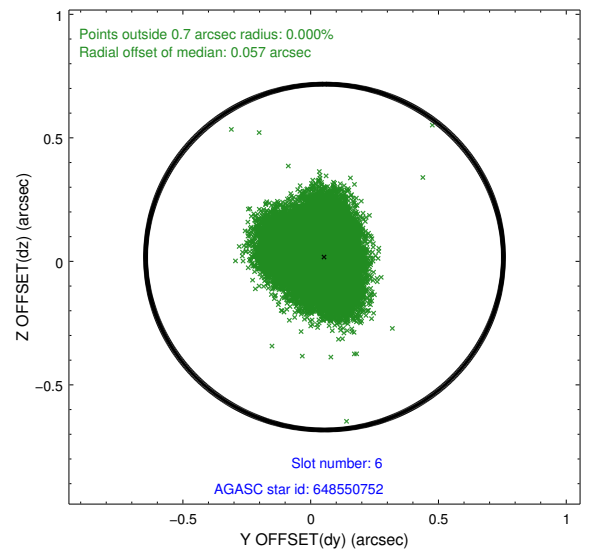
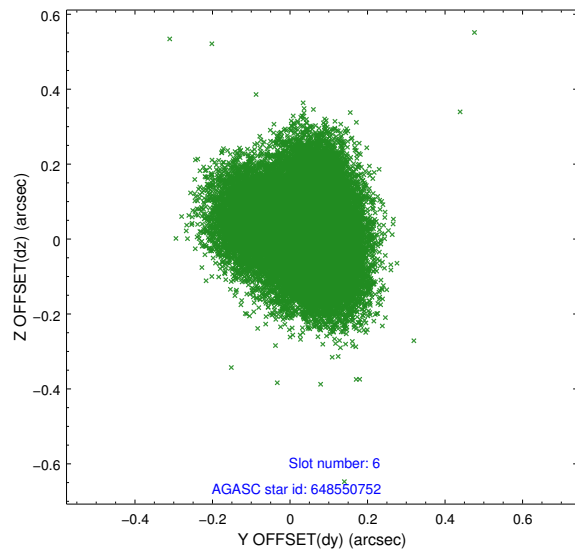
2.4.2 Slot 4



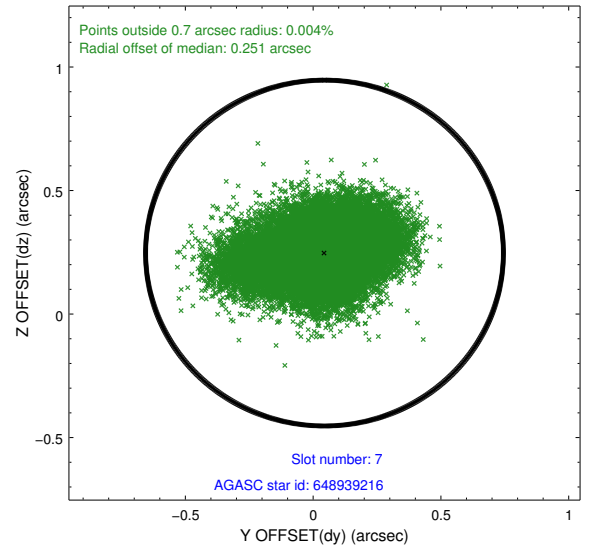
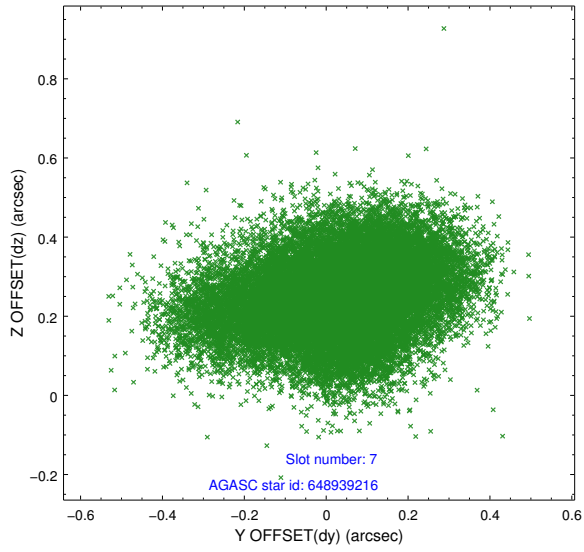
2.4.3 Slot 5



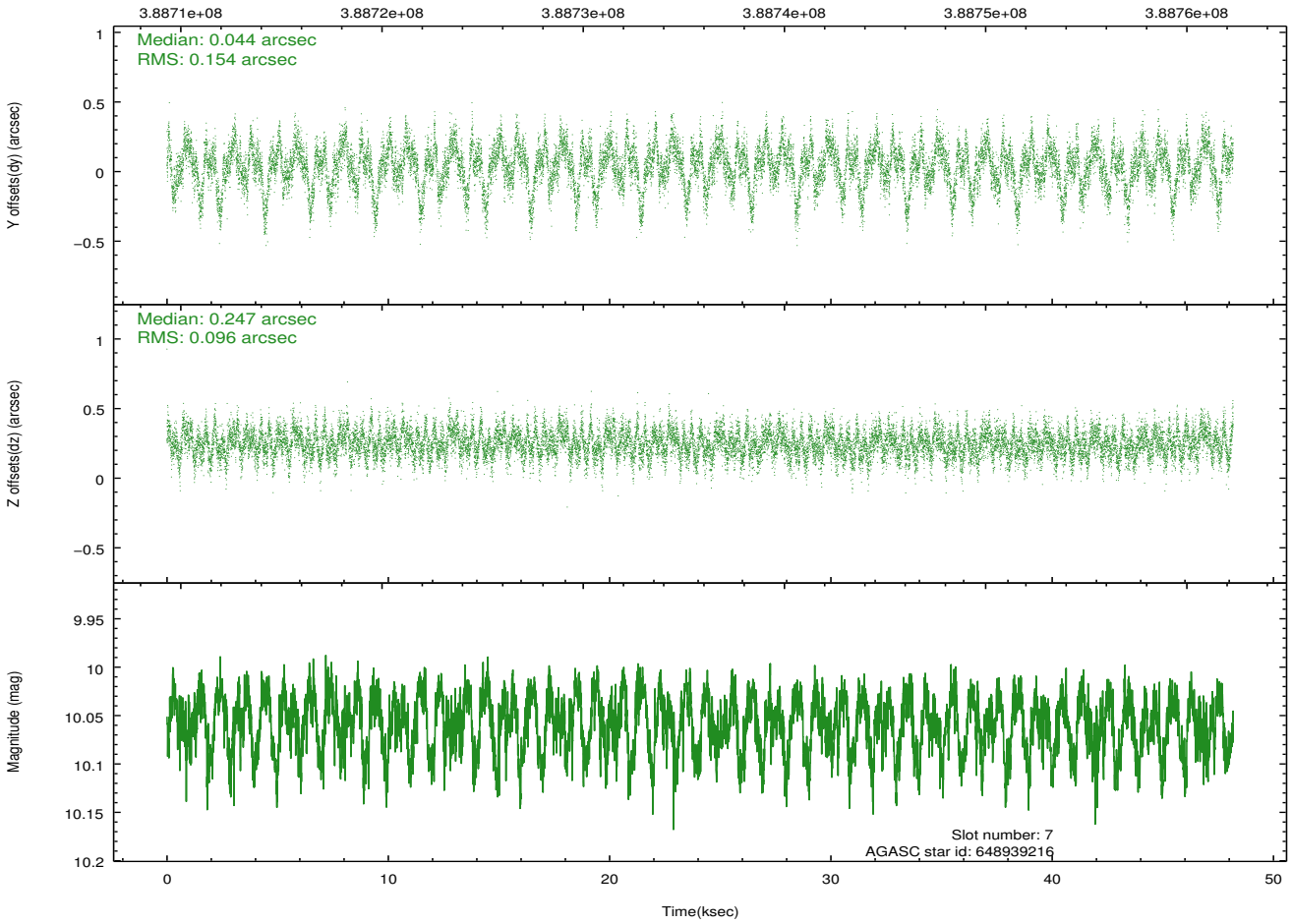
2.4.4 Slot 6



2.4.5 Slot 7

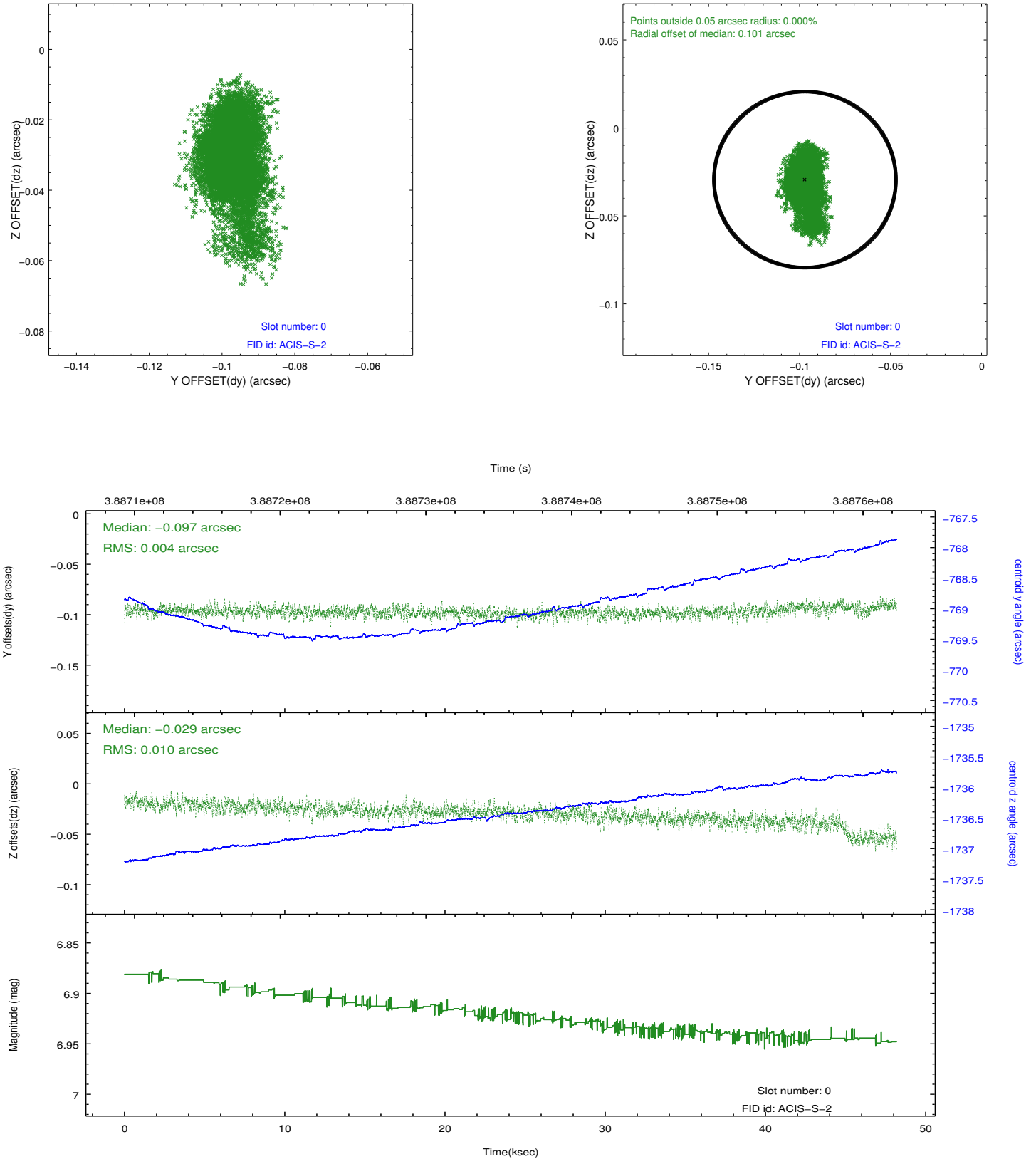


Time (s)

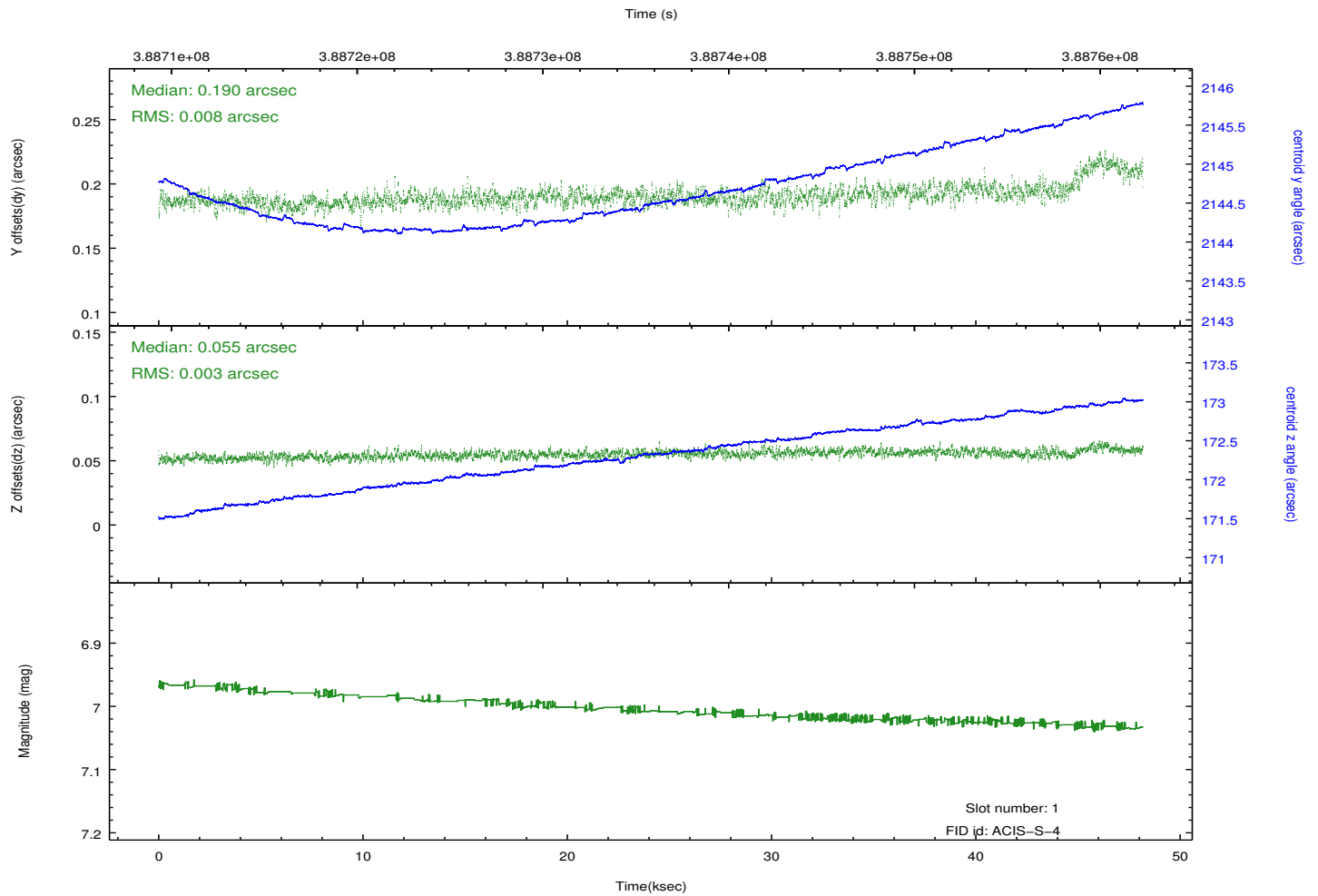
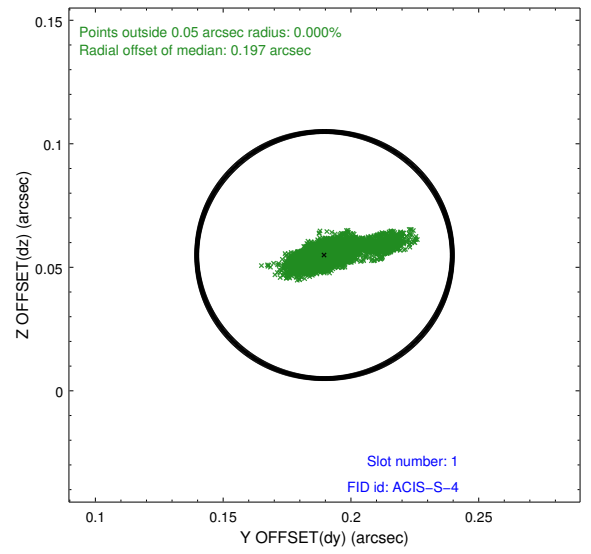
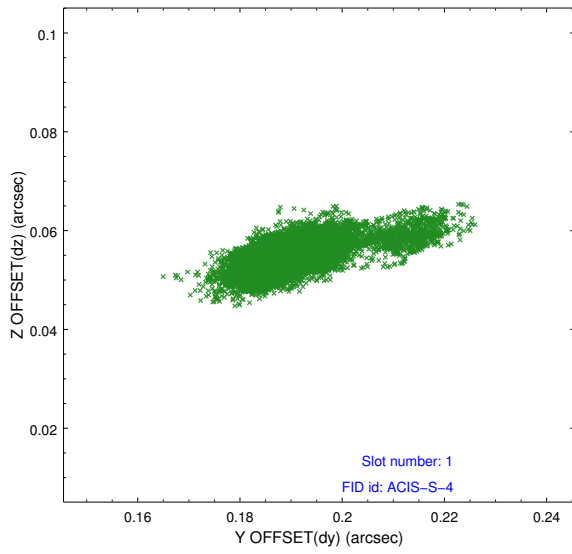


2.5 FID Slots

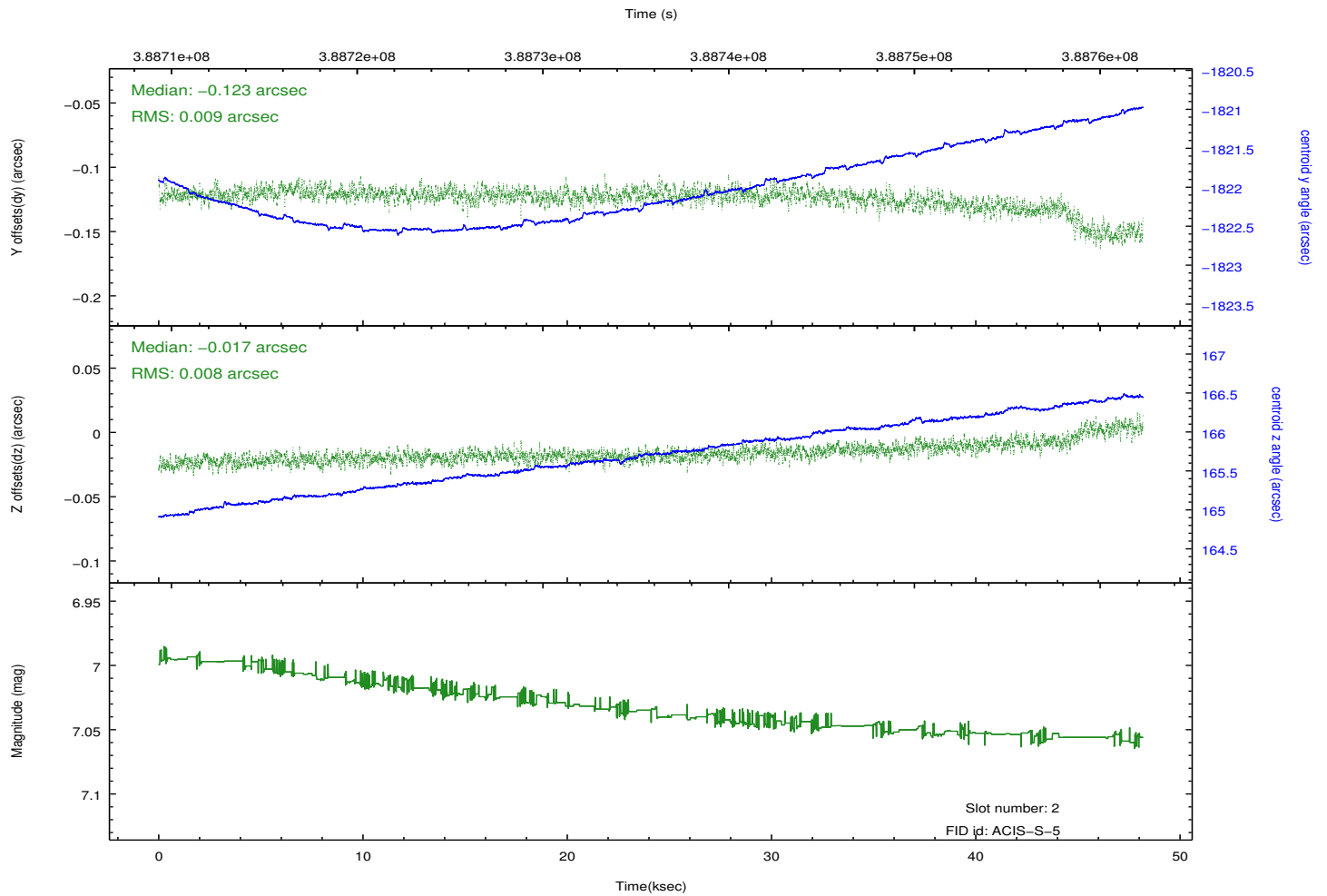
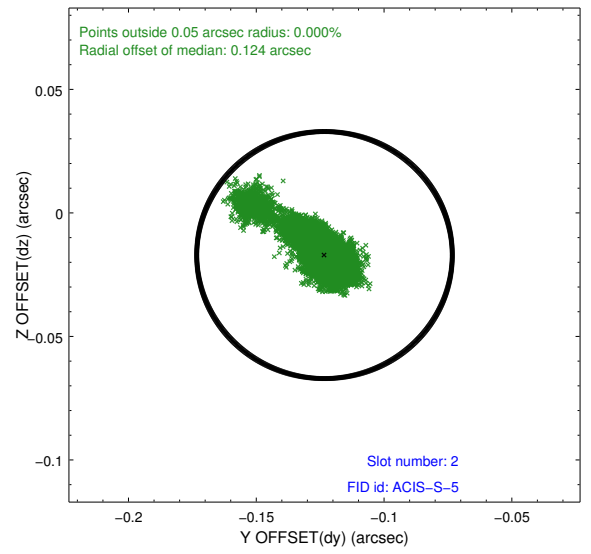
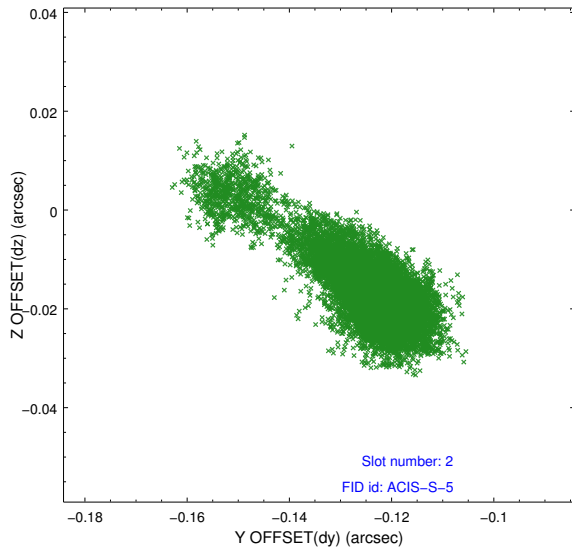
2.5.1 Slot 0



2.5.2 Slot 1



2.5.3 Slot 2



A Summary

A.1 Status

V&V Scientist	Joy Nichols
V&V Date (YYYY-MM-DD)	2012.07.03
V&V Edition	1
V&V Disposition and Status	OK
V&V Charge Time	48.183300370574

A.2 Comments