

V&V Reference Report

L2 ASCDS Version : 8.4.5

Observation 11761 - L2 Version 2
Chandra X-Ray Center

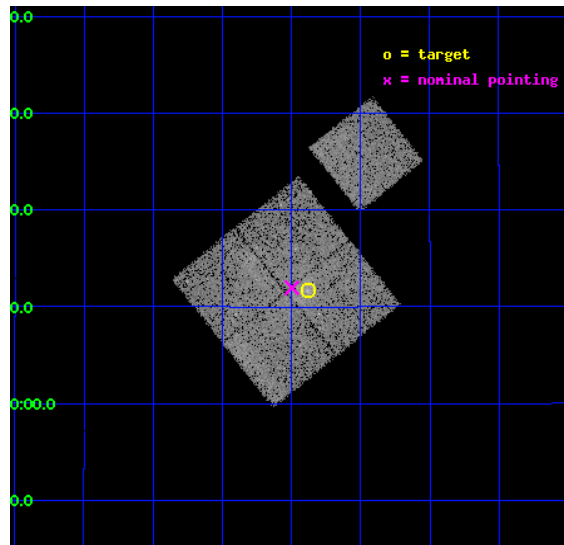
L2 Processing Date : Jun 16 2012

Contents

1	Front	2
2	OBI	3
2.1	OBI	3
2.1.1	Images	3
2.1.2	Bias	3
2.1.3	Parameters	4
2.1.4	Events	4
2.2	Compared Parameters	5
2.3	Aspect	6
2.4	Star Slots	9
2.4.1	Slot 3	9
2.4.2	Slot 4	10
2.4.3	Slot 5	11
2.4.4	Slot 6	12
2.4.5	Slot 7	13
2.5	FID Slots	14
2.5.1	Slot 0	14
2.5.2	Slot 1	15
2.5.3	Slot 2	16
A	Summary	17
A.1	Status	17
A.2	Comments	17

1 Front

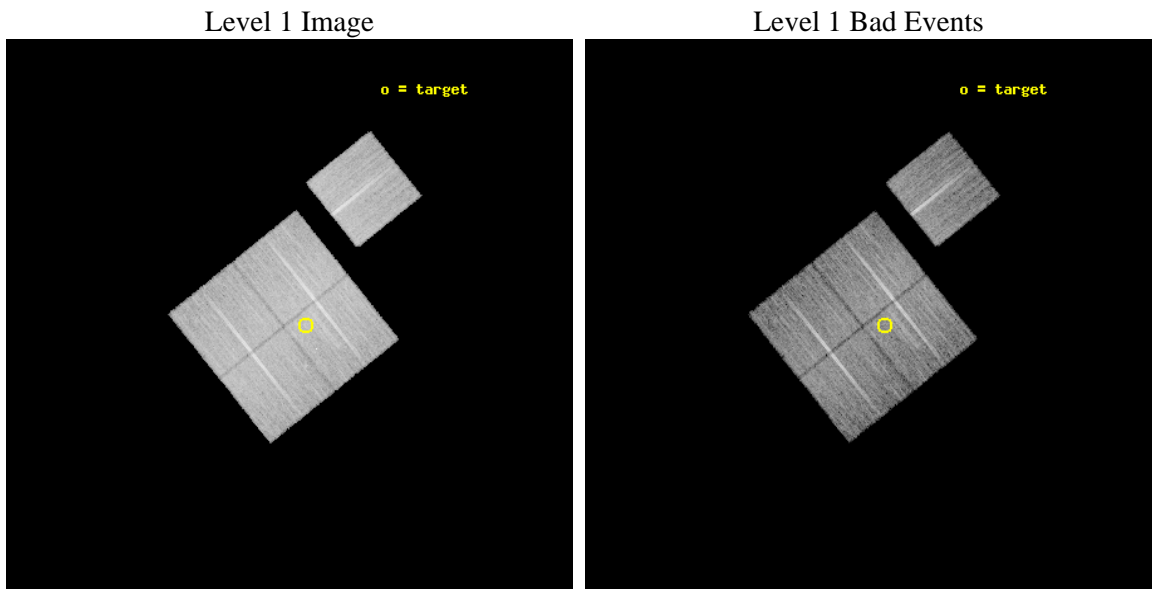
seq_num	800901	Sequence number
obs_id	11761	Observation id
title	The X-Ray, SZ, and Optical Scaling Relations of Massive Galaxy Clusters	Proposal title
observer	Dr. Eli Rykoff	Principal investigator
object	SDSS J1233+1511	Source name
dtcycle	0	
cycle	P	events from which exps? Prim/Second/Both
ra_targ	188.470833	Observer's specified target RA [deg]
dec_targ	15.194639	Observer's specified target Dec [deg]
ra_nom	188.49938731671	Nominal RA [deg]
dec_nom	15.199422965479	Nominal Dec [deg]
roll_nom	51.2701261011	Nominal Roll [deg]
revision	2	Processing version of data
ontime	12517.305592477	Sum of GTIs [s]
livetime	12353.757779805	Livetime [s]
ontime0	12507.759621322	Sum of GTIs [s]
ontime1	12517.223512471	Sum of GTIs [s]
ontime2	12517.264552474	Sum of GTIs [s]
ontime3	12517.305592477	Sum of GTIs [s]
ontime6	12517.141432464	Sum of GTIs [s]
l2events	52642	Number of level 2 events



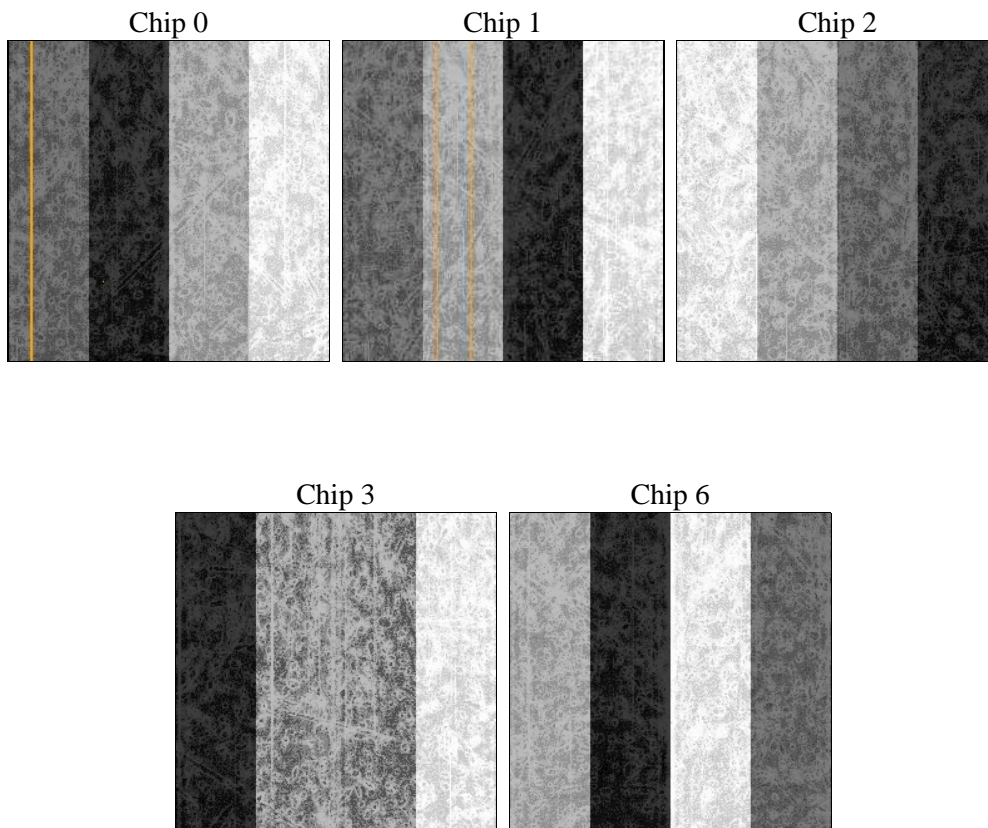
2 OBI

2.1 OBI

2.1.1 Images



2.1.2 Bias



2.1.3 Parameters

obi_num	0	Obi number	sched_exp_time	12745.654000	[s] Scheduled observation exposure time
ascdsver	8.4.5	Processing system revision	ontime	12517.305592477	Sum of GTIs [s]
caldbver	4.4.10	 	ontime0	12507.759621322	Sum of GTIs [s]
date	2012-06-16T15:32:16	Date and time of file creation	ontime1	12517.223512471	Sum of GTIs [s]
revision	2	Processing version of data	ontime2	12517.264552474	Sum of GTIs [s]
			ontime3	12517.305592477	Sum of GTIs [s]
			ontime6	12517.141432464	Sum of GTIs [s]
			l1events	546616	Number of level 1 events

2.1.4 Events

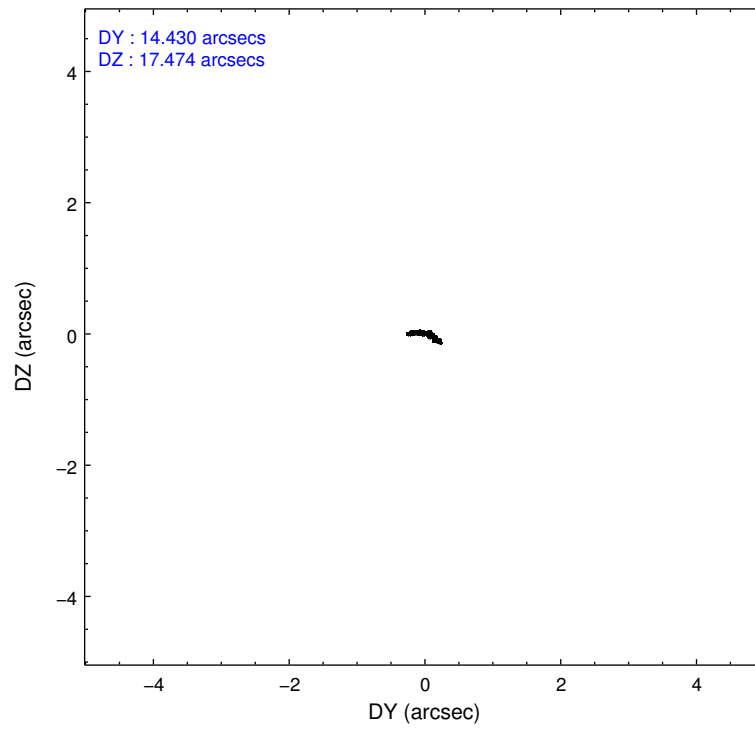
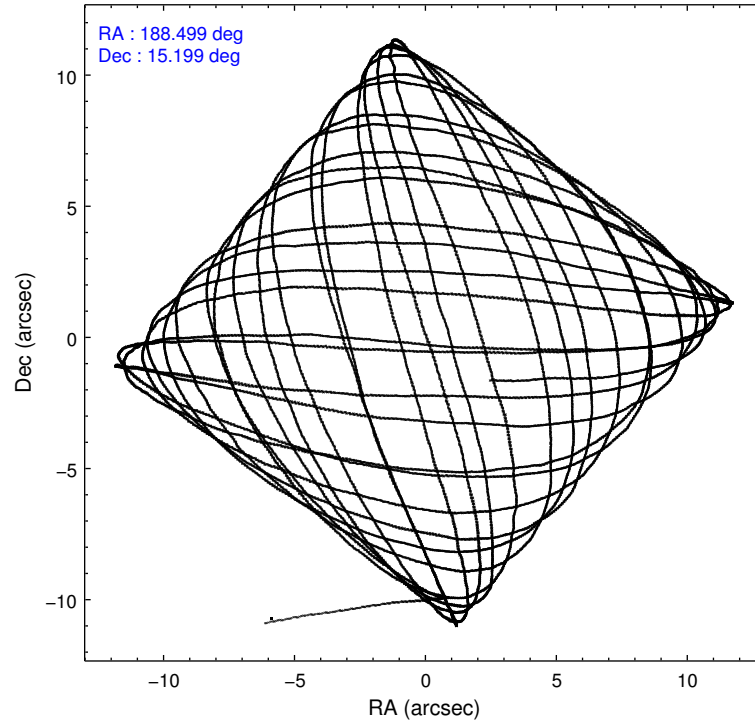
	ccd 0	ccd 1	ccd 2	ccd 3	ccd 6
level 1 events	104552	103292	117820	111225	109727
rejected events	91818	89964	105587	98847	97593
rejected %	87%	87%	89%	88%	88%

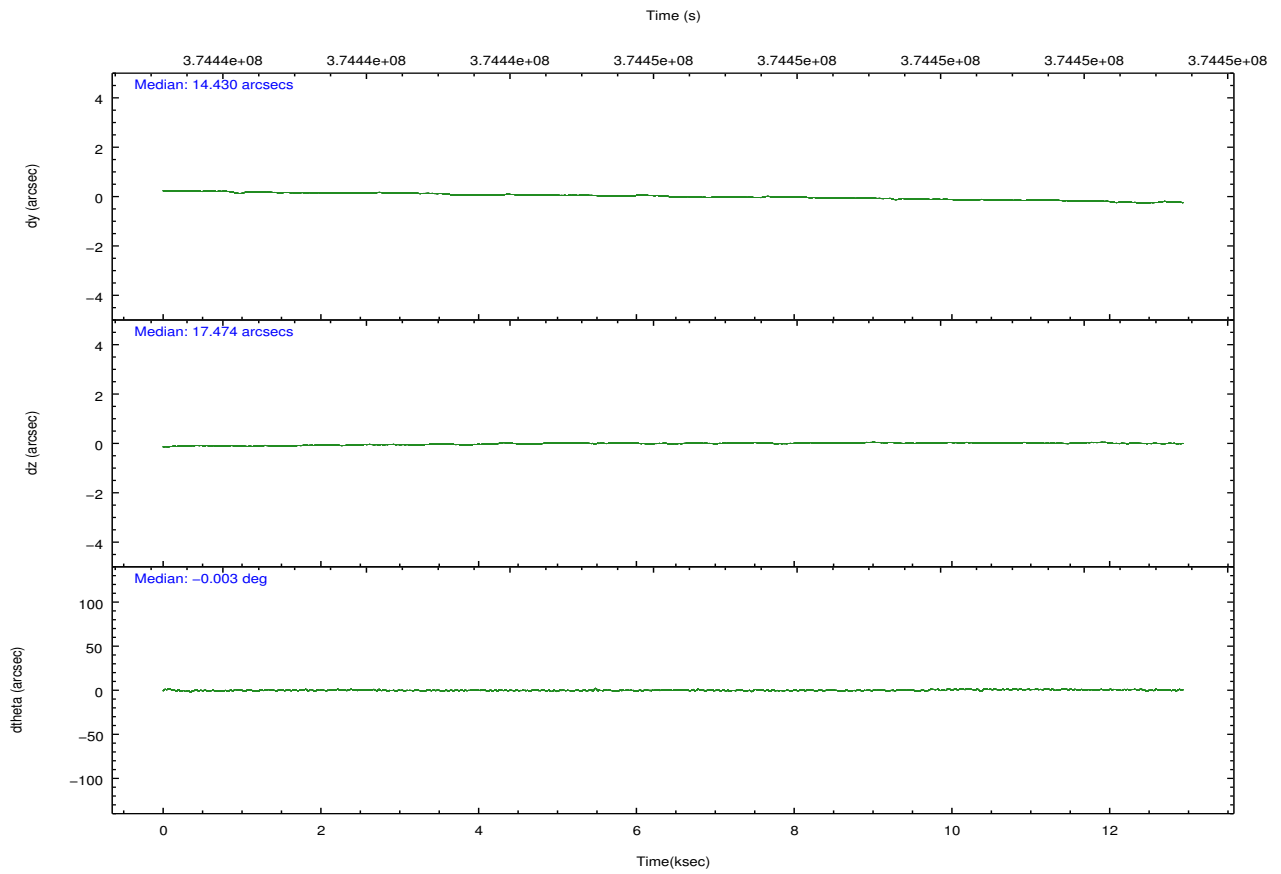
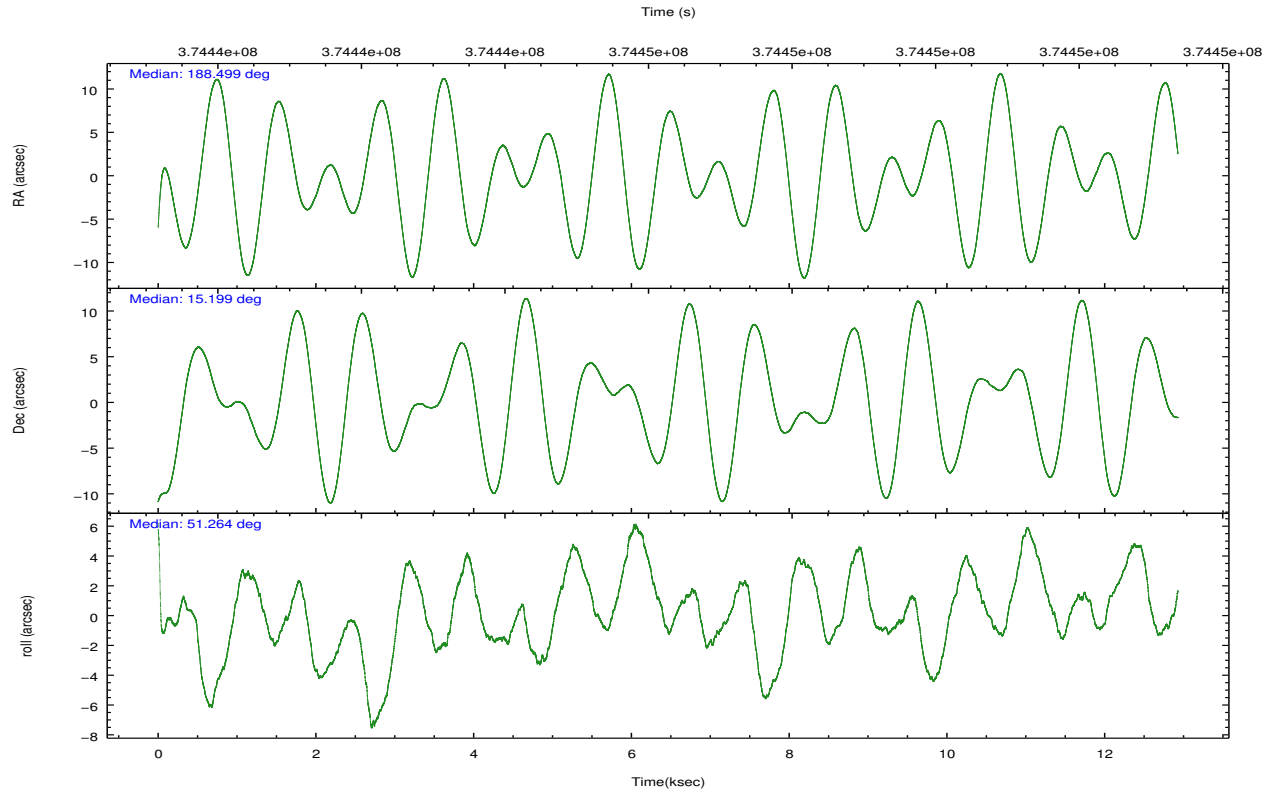
	ccd 0	ccd 1	ccd 2	ccd 3	ccd 6
grade 0 events	5106	5211	4726	5233	4468
	4%	5%	4%	4%	4%
grade 1 events	59	75	69	89	48
	0%	0%	0%	0%	0%
grade 2 events	2956	2960	2970	2566	2708
	2%	2%	2%	2%	2%
grade 3 events	1272	1331	1169	1190	1264
	1%	1%	0%	1%	1%
grade 4 events	1184	1365	1187	1216	1210
	1%	1%	1%	1%	1%
grade 5 events	3967	4458	3884	4430	4401
	3%	4%	3%	3%	4%
grade 6 events	2226	2472	2195	2183	2494
	2%	2%	1%	1%	2%
grade 7 events	87782	85420	101620	94318	93134
	83%	82%	86%	84%	84%

2.2 Compared Parameters

Parameter	Planned	Actual	Parameter	Planned	Actual
Instrument	ACIS	ACIS	Obspar format version number	7	7
Detector	ACIS-01236	ACIS-01236	Obspar file type	PREDICTED	ACTUAL
Grating	NONE	NONE	Obspar update status	NONE	UPDATED
Data mode	VFAINT	VFAINT	Number of optional ACIS chips dropped	0	0
Observation mode	POINTING	POINTING	On-chip summing requested	N	N
[deg] Pointing RA	188.495162	188.4993873167112	Subarray requested	NONE	NONE
[deg] Pointing Dec	15.172250	15.19942296547851	Alternating exposures requested	N	N
[deg] Pointing Roll	51.062542	51.27012610109964	[s] Primary exposure time	0.000000	3.1
[mm] SIM focus pos	-0.782348	-0.7809083437167272			
[mm] SIM defocus	0	0.001439871863259334			
[mm] SIM translation stage pos	-233.592463	-233.5874344608287			
[mm] SIM translation stage offset	0	-0.005018542100998502			
[s] Observation start time (MET)	374439991.184000	374439008.52206			
Observation start date	2009-11-12T19:05:25	2009-11-12T18:50:08			
[s] Observation end time (MET)	374452737.184000	374452967.48527			
Observation end date	2009-11-12T22:37:51	2009-11-12T22:42:47			
Read mode	TIMED	TIMED			

2.3 Aspect



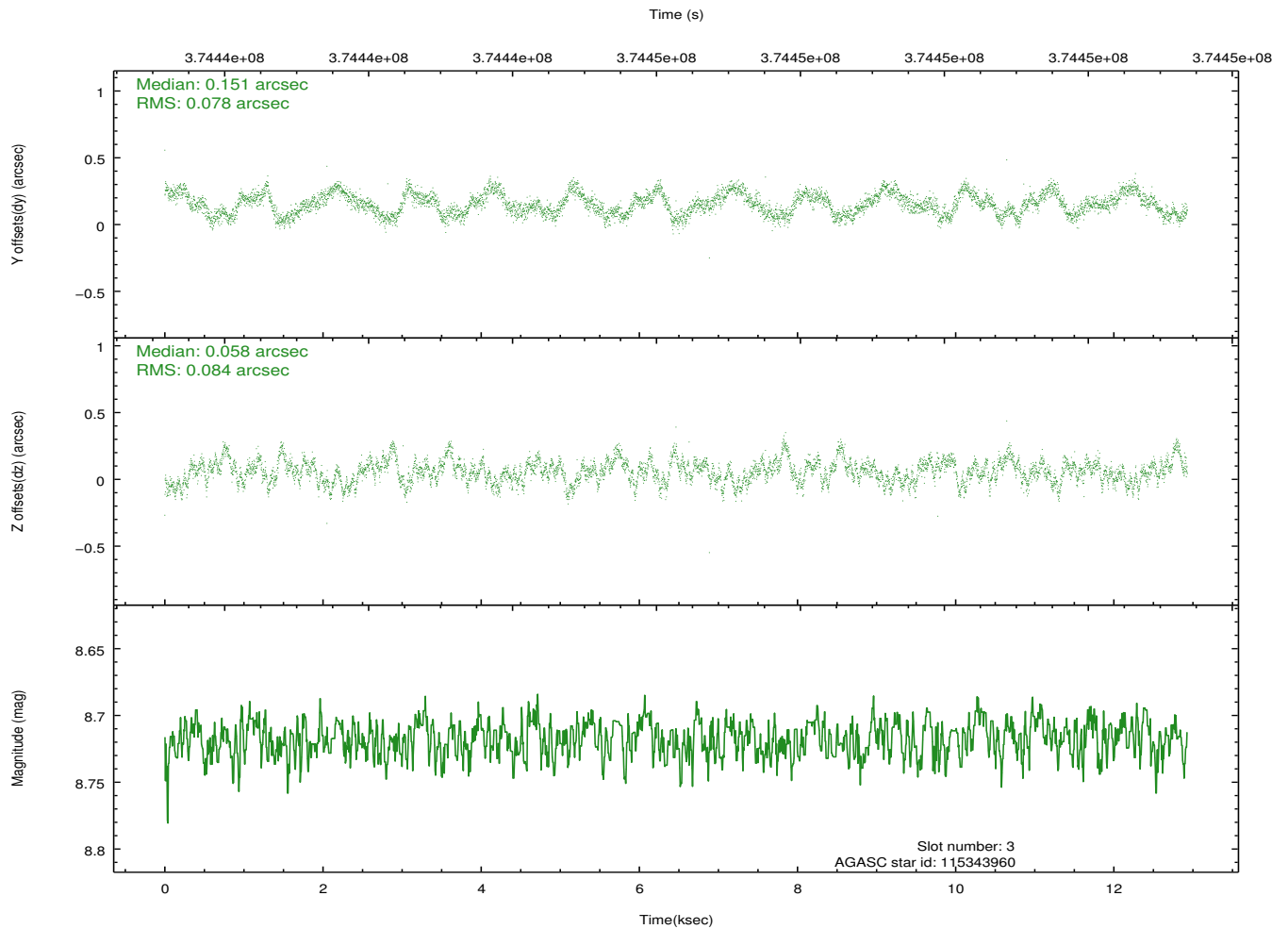
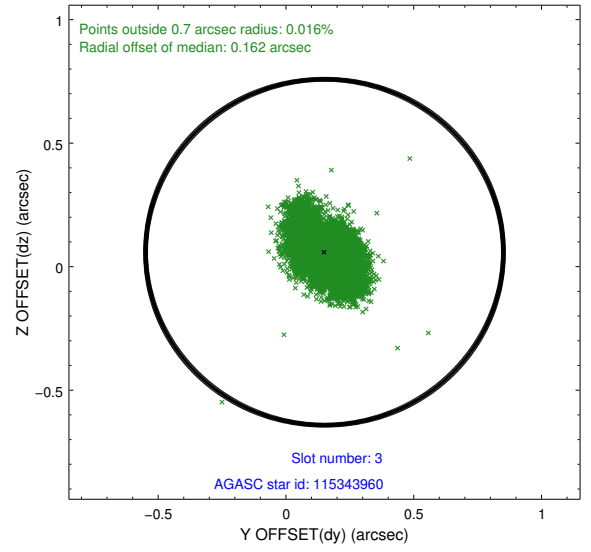
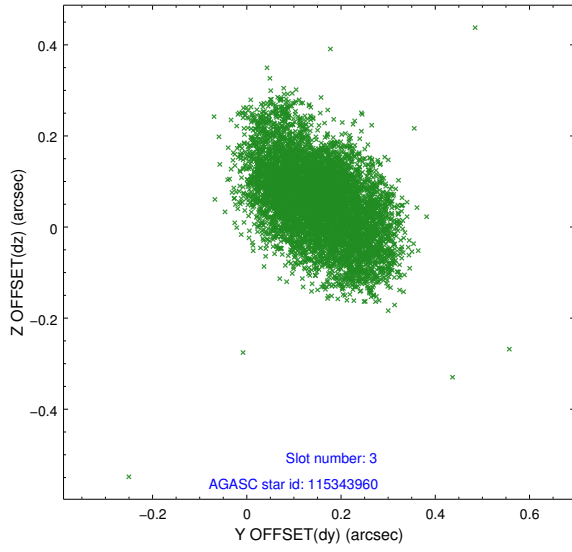


Slot Statistics

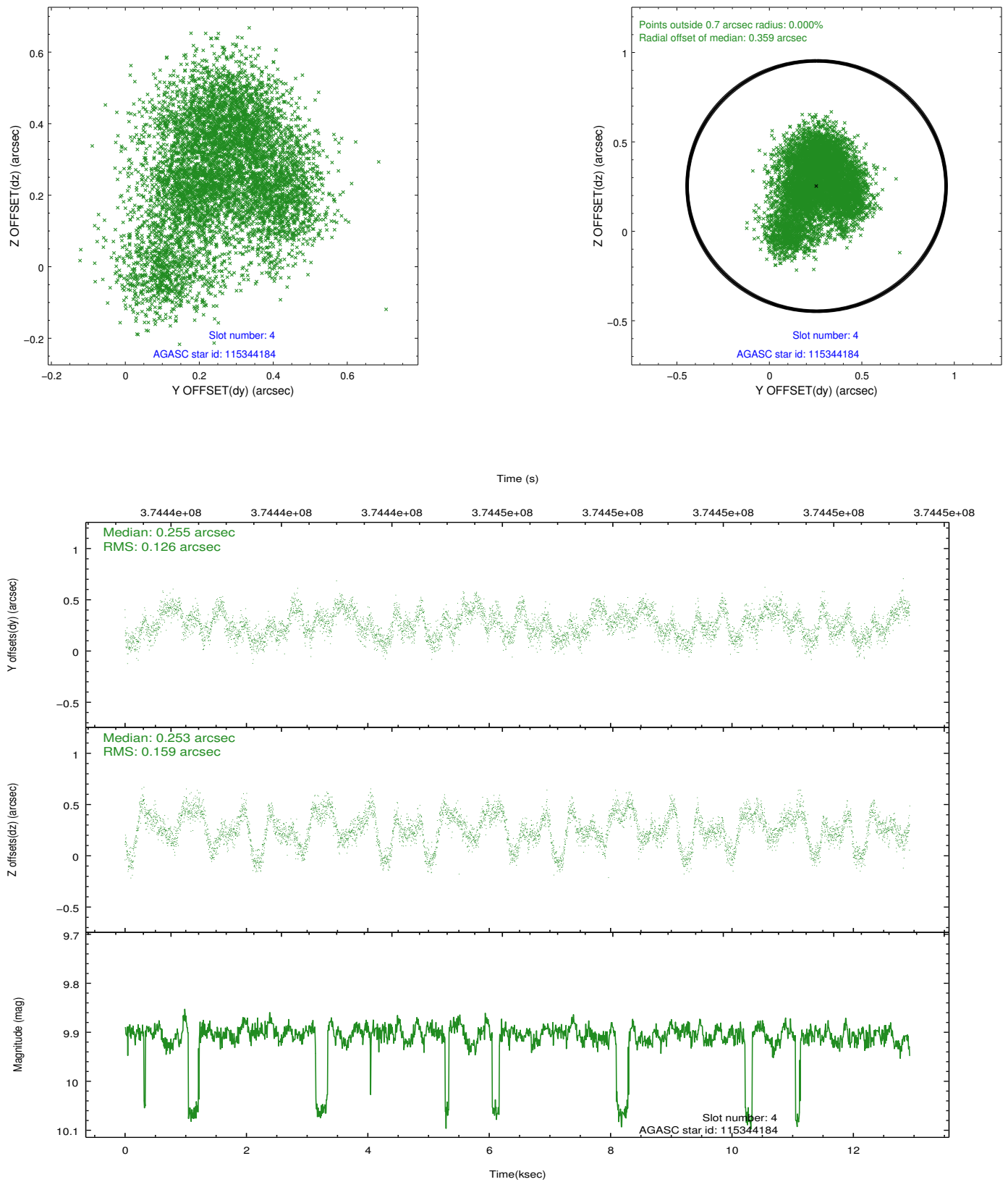
slot	status	id	mag	n_pts	med_dy	med_dz	dr1	dr2	ra	dec	mean_y	mean_z
0	FID	ACIS-I-1	7.01	3154	-0.006	-0.094	0.009	0.017	0.000000	0.000000	925.05	-841.20
1	FID	ACIS-I-4	6.94	3153	0.150	0.092	0.008	0.014	0.000000	0.000000	2145.43	1058.62
2	FID	ACIS-I-5	7.00	3154	-0.243	0.073	0.007	0.013	0.000000	0.000000	-1822.74	1056.82
3	GUIDE	115343960	8.72	6301	0.151	0.058	0.122	0.199	188.590007	14.643744	-1271.69	-1452.27
4	GUIDE	115344184	9.91	6267	0.255	0.253	0.220	0.345	188.223378	14.673173	-1991.39	-392.15
5	GUIDE	189541720	10.17	6257	-0.117	-0.234	0.218	0.383	188.191777	15.591807	513.94	1767.52
6	GUIDE	189543784	9.07	6303	-0.183	0.198	0.115	0.186	189.184903	15.264210	1766.40	-1651.94
7	GUIDE	189549464	10.31	6292	-0.124	-0.290	0.255	0.387	188.046755	15.674900	431.83	2347.09

2.4 Star Slots

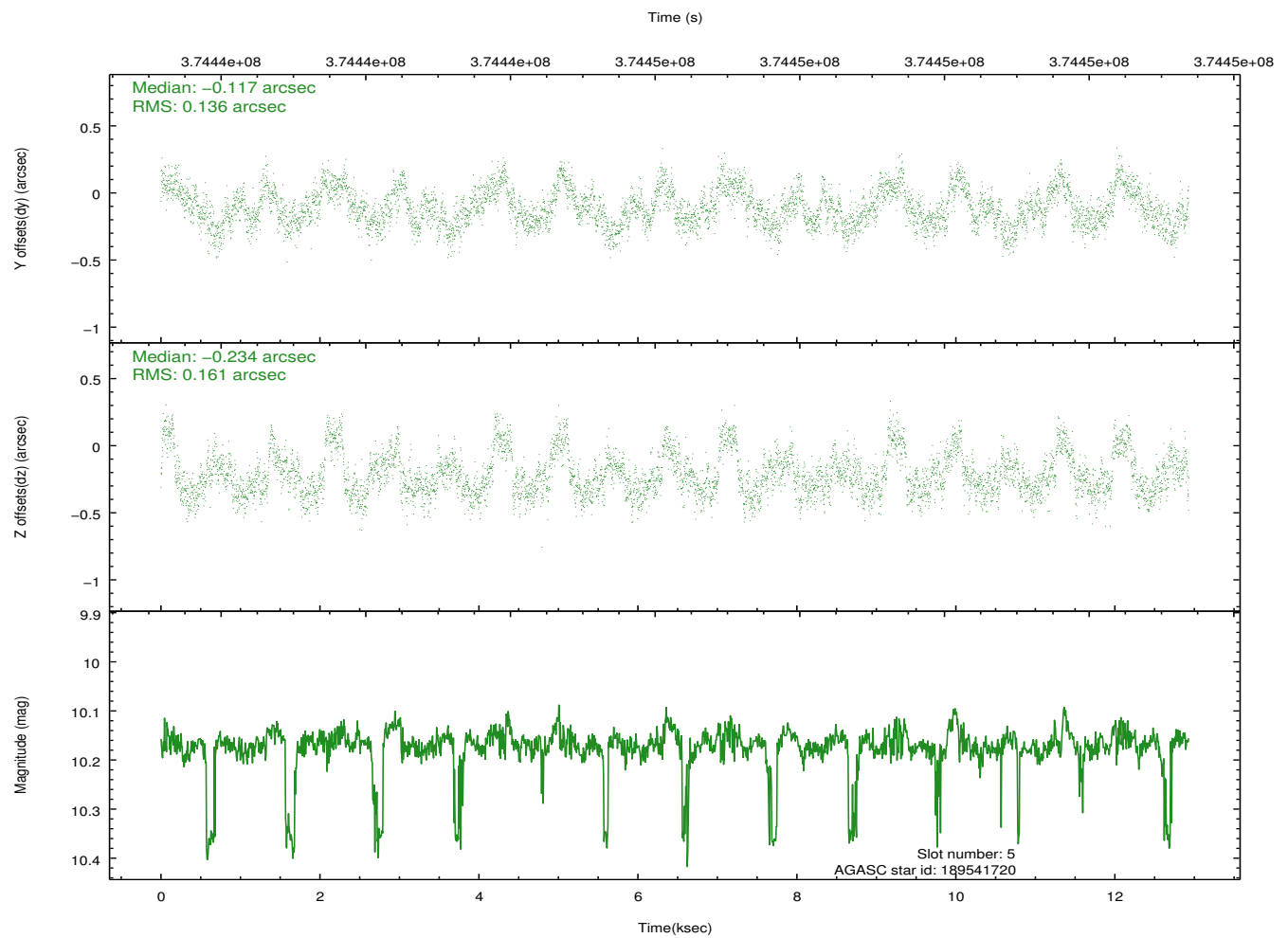
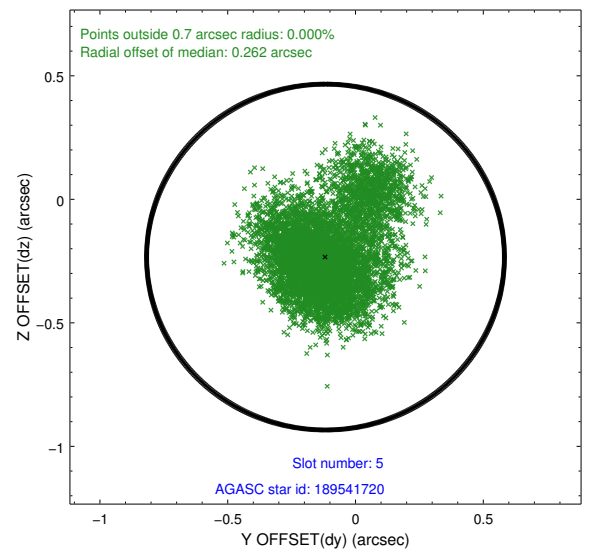
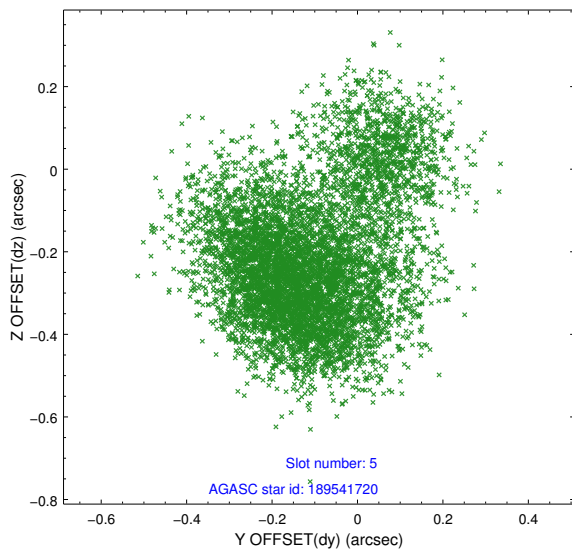
2.4.1 Slot 3



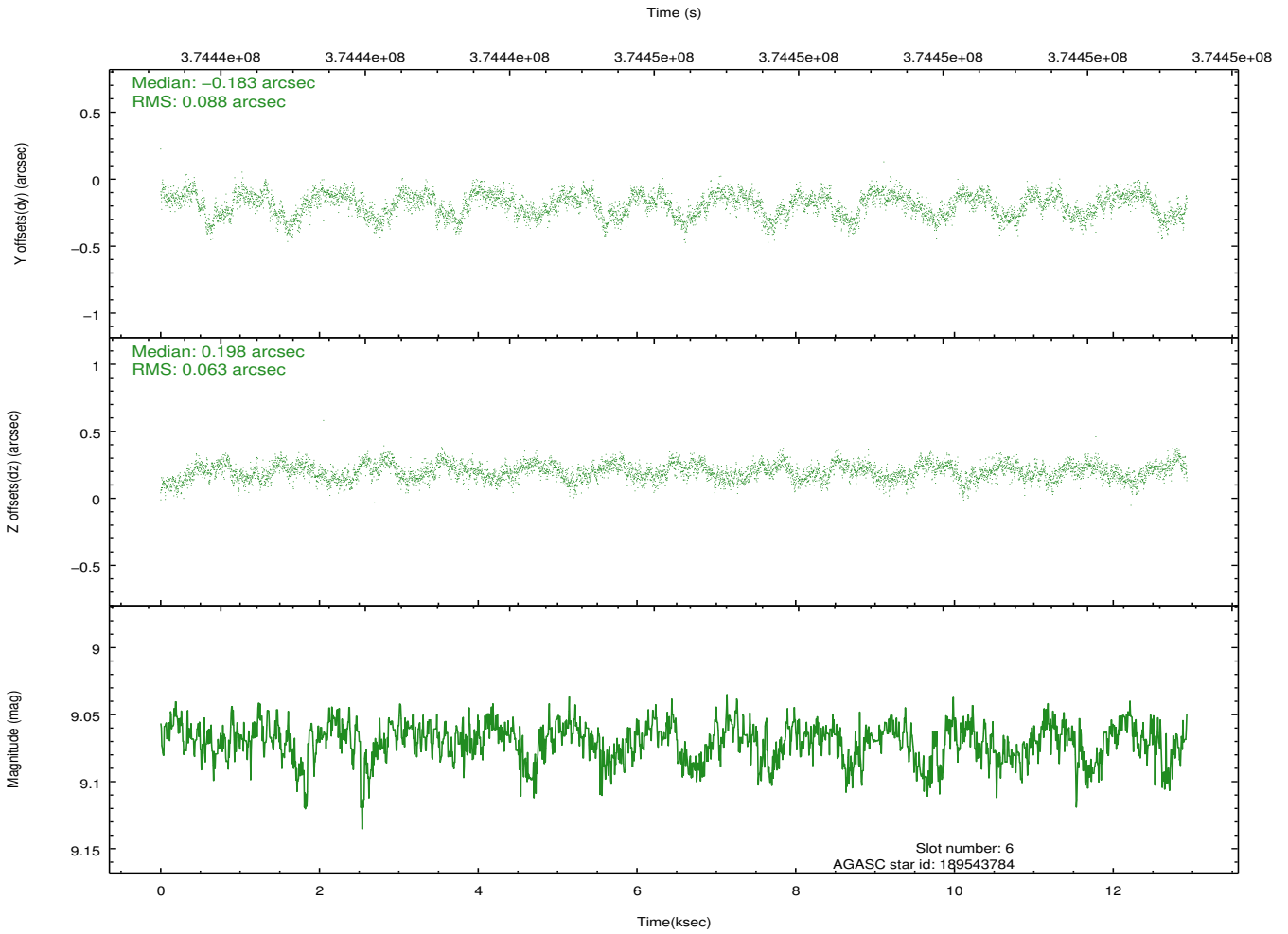
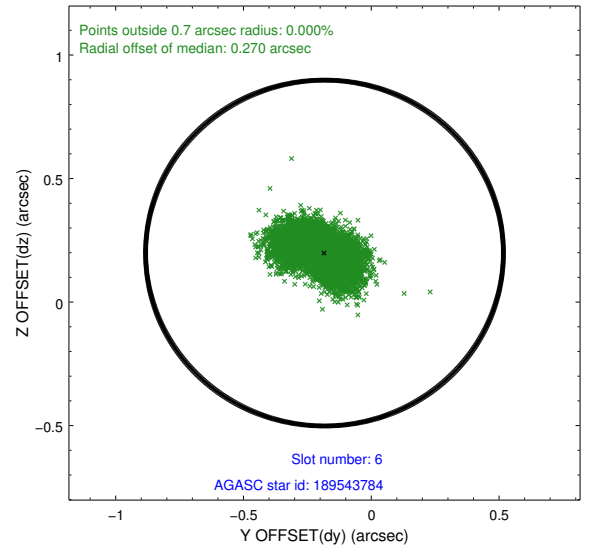
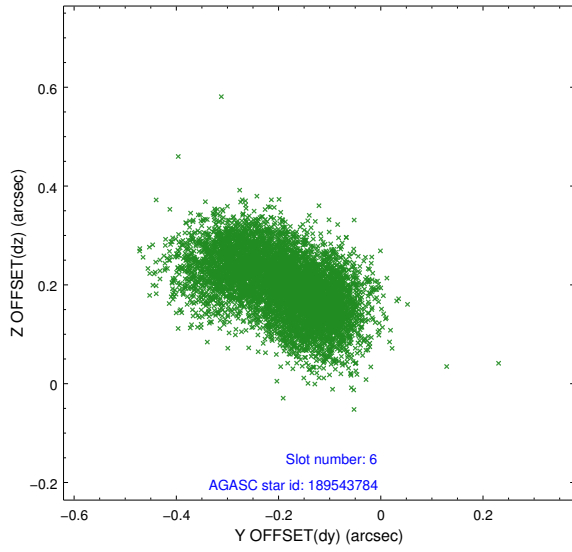
2.4.2 Slot 4



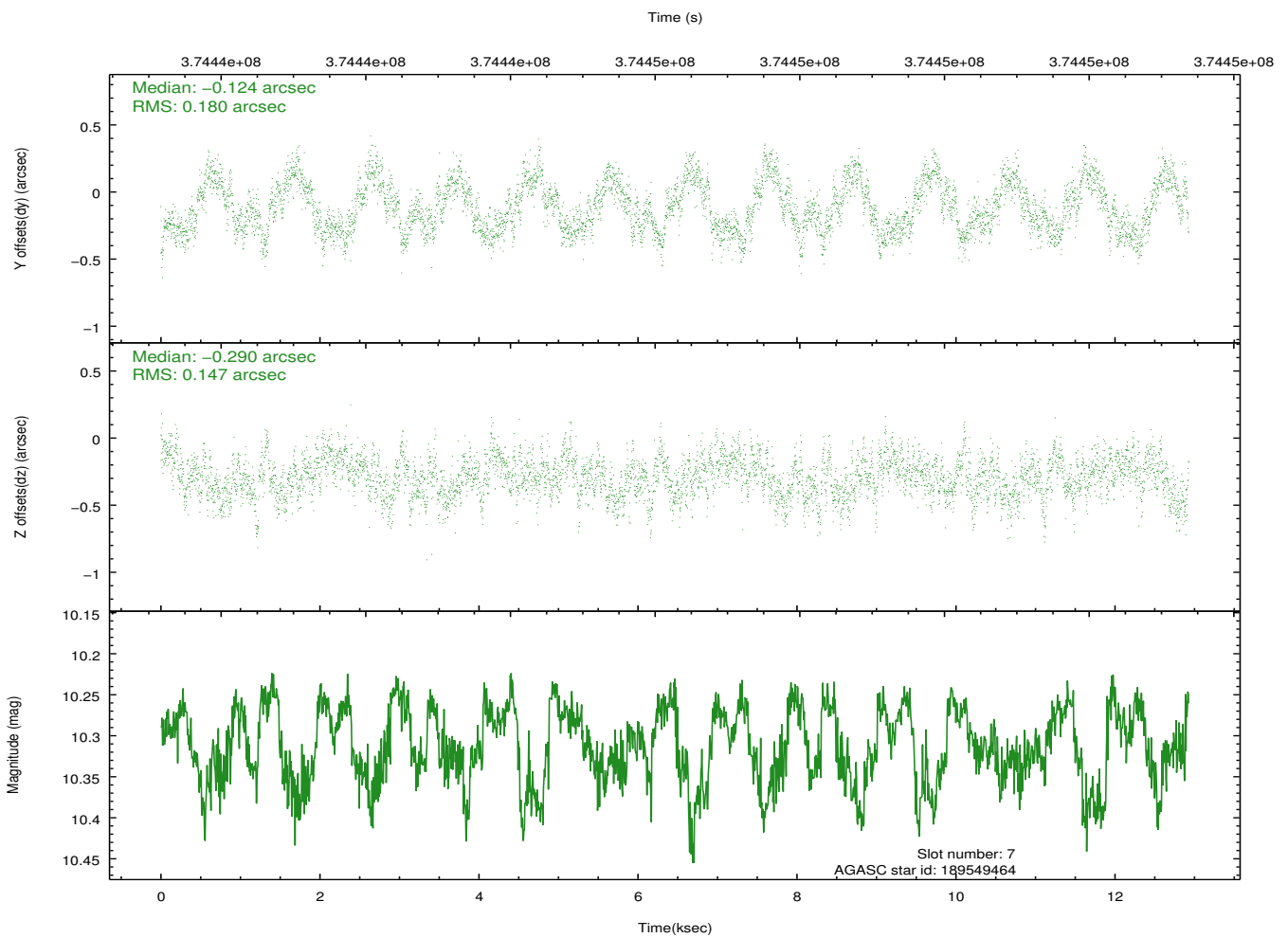
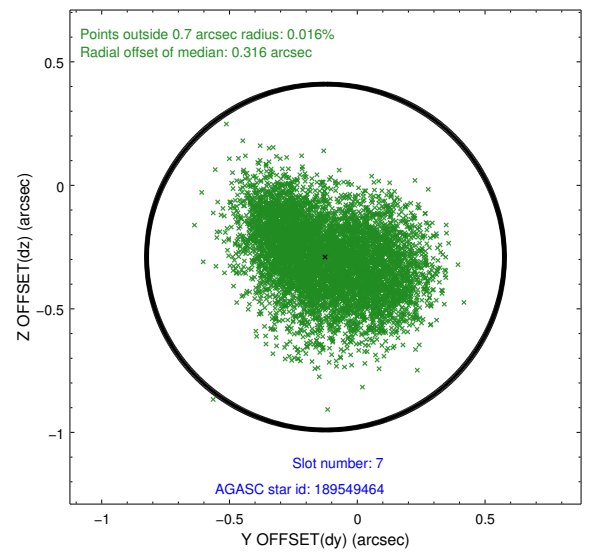
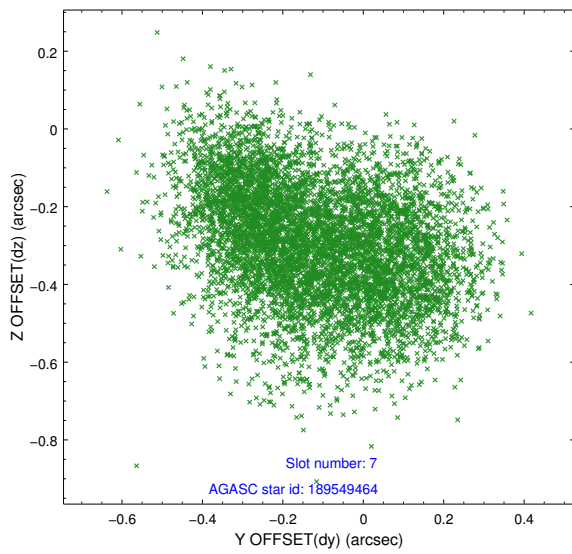
2.4.3 Slot 5



2.4.4 Slot 6

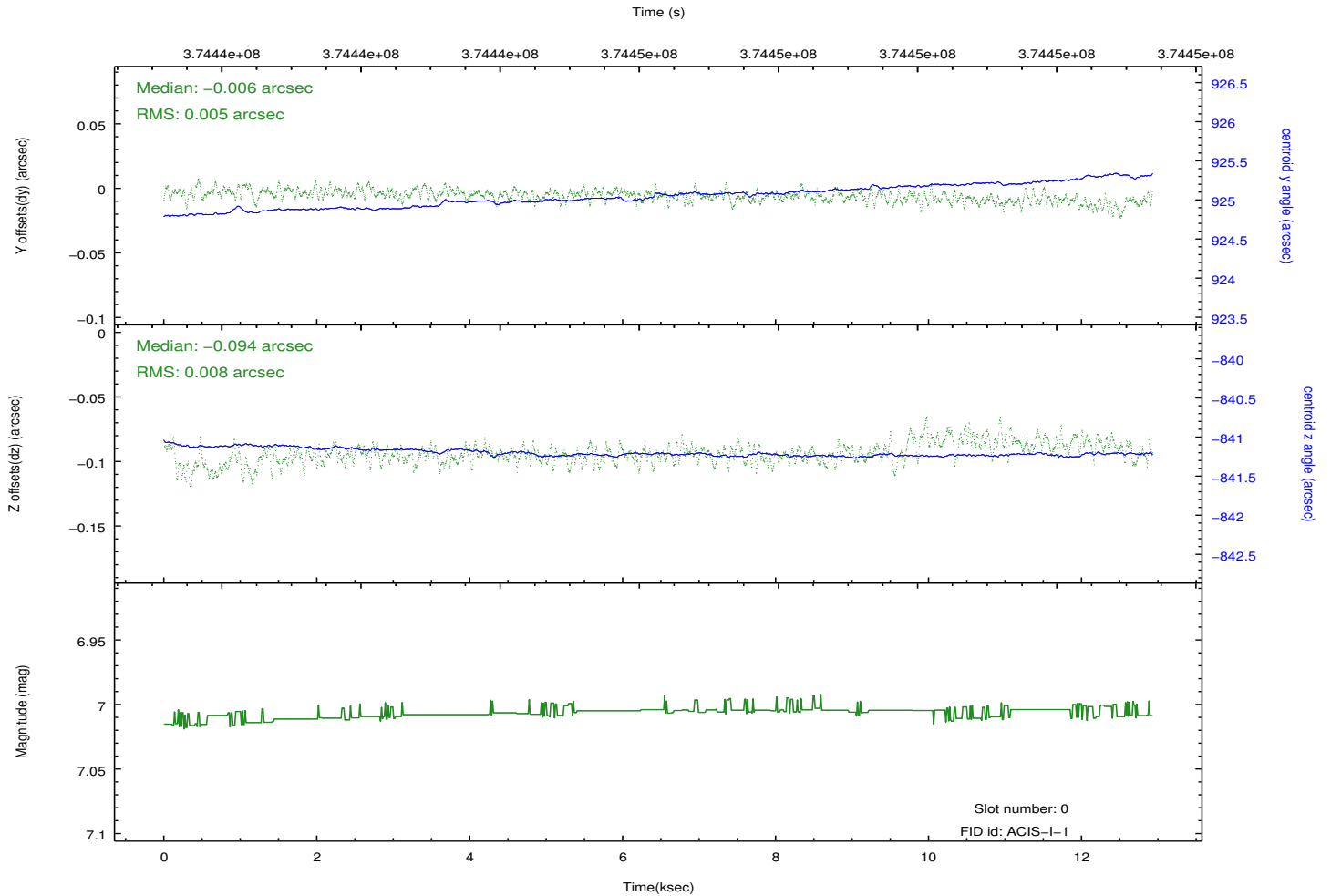
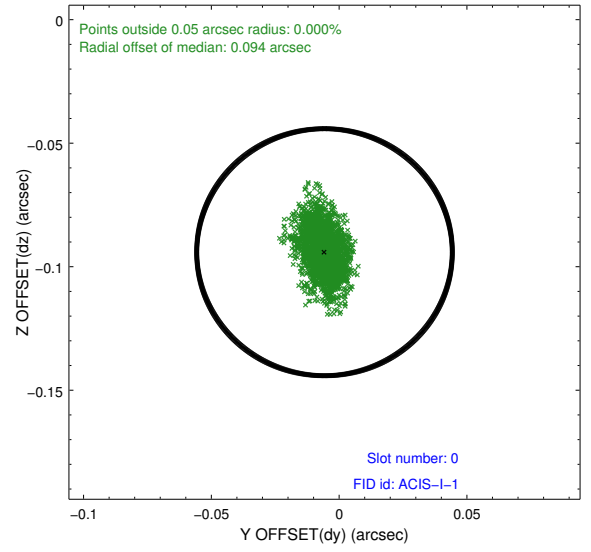
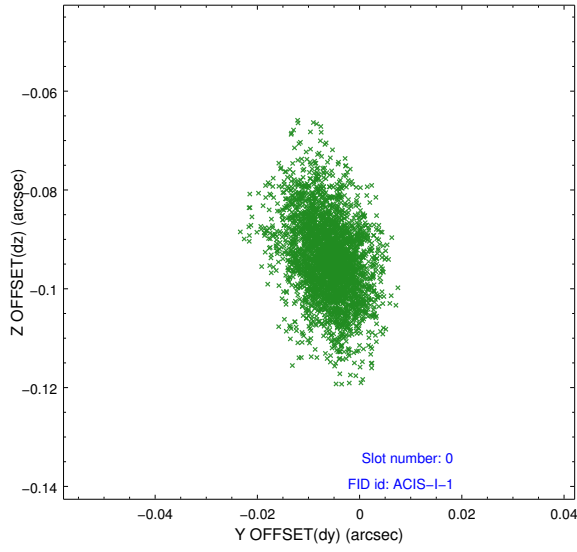


2.4.5 Slot 7

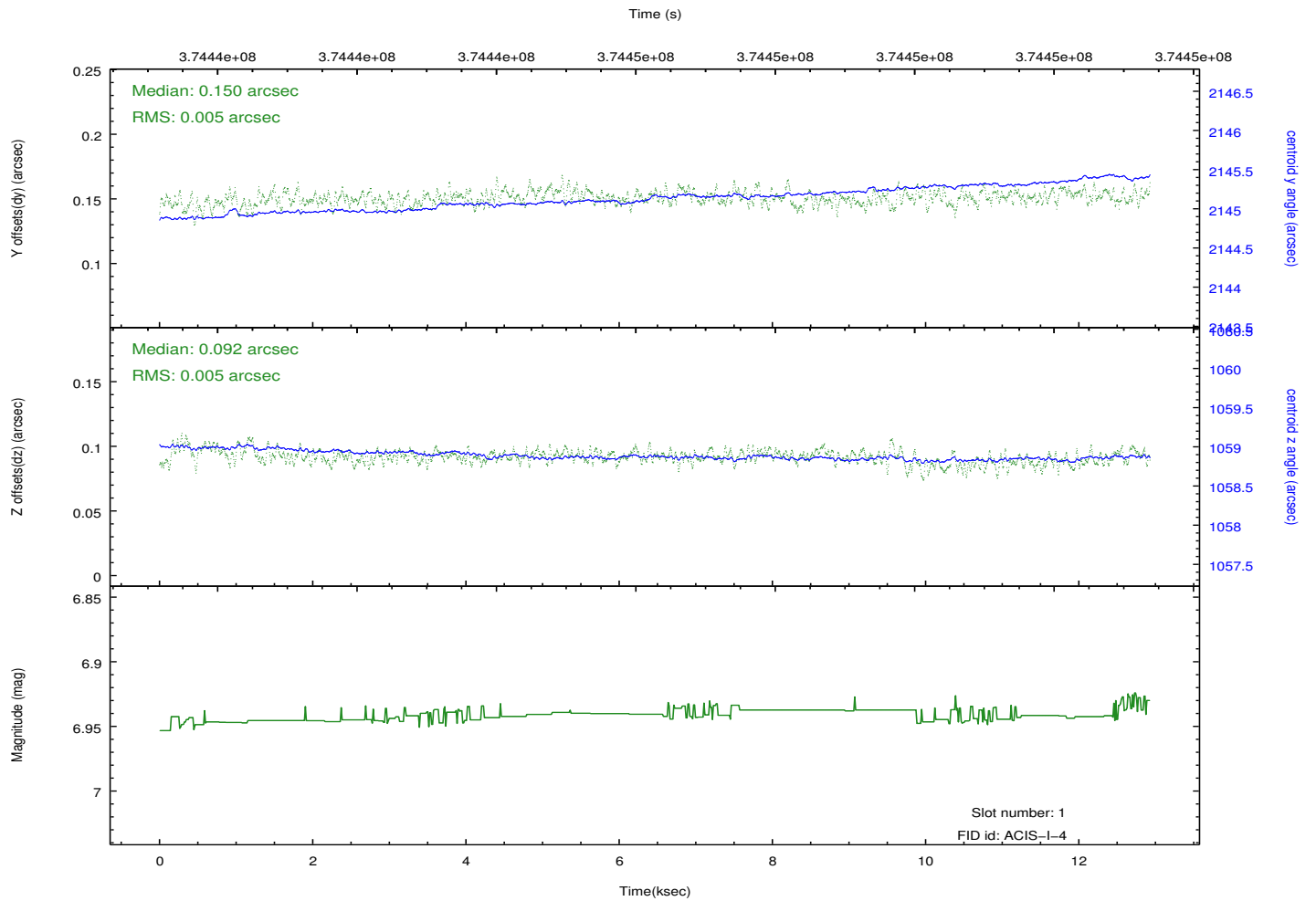
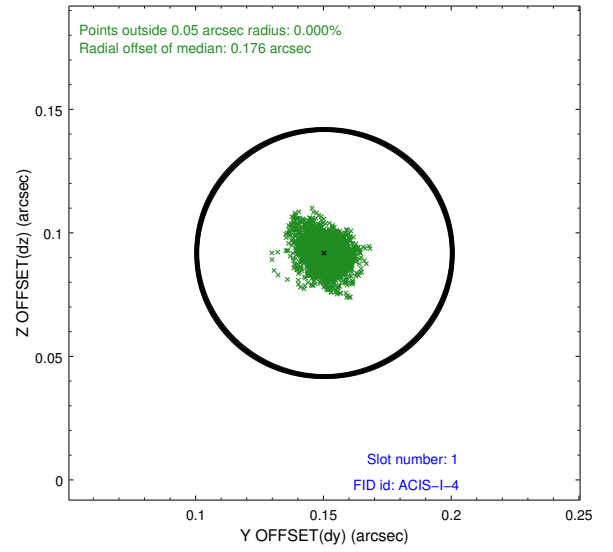
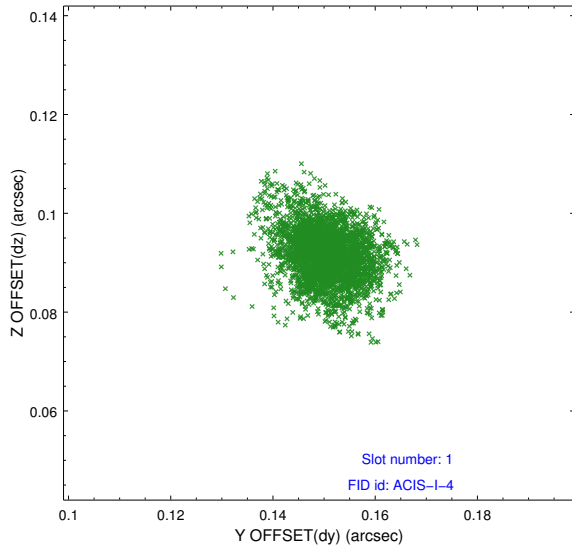


2.5 FID Slots

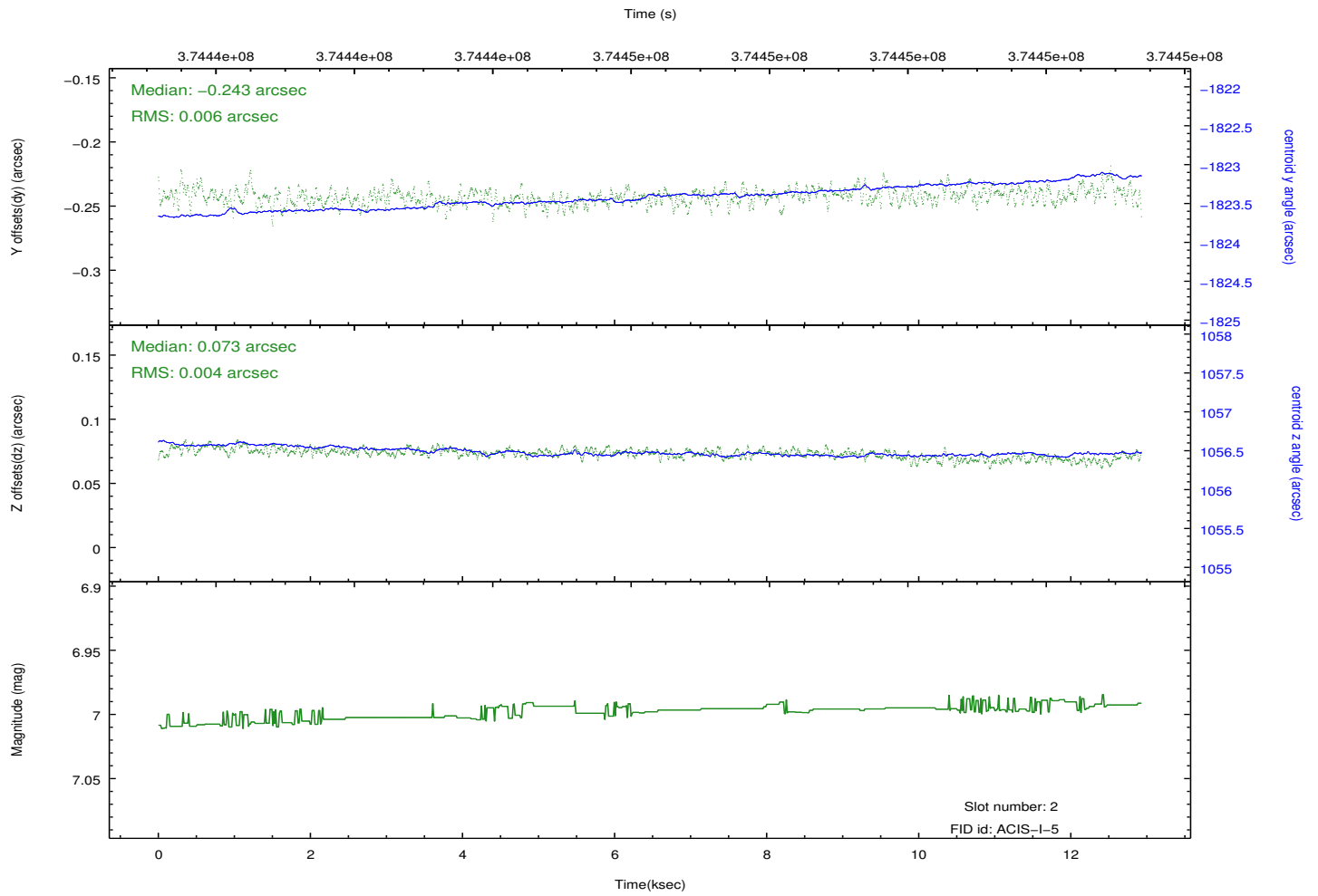
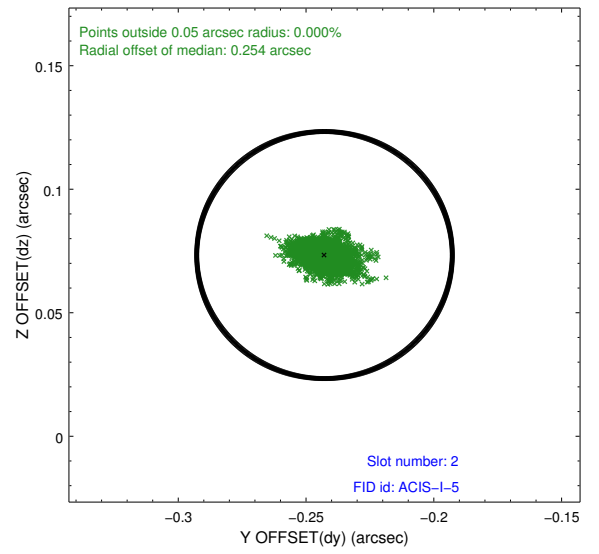
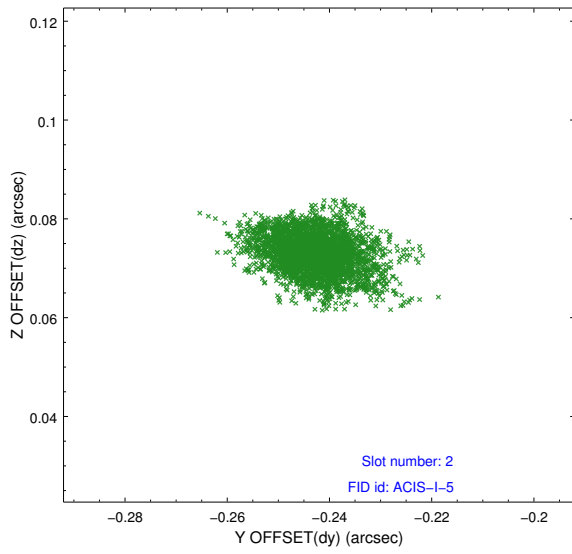
2.5.1 Slot 0



2.5.2 Slot 1



2.5.3 Slot 2



A Summary

A.1 Status

V&V Scientist	Jen Lauer
V&V Date (YYYY-MM-DD)	2012.06.20
V&V Edition	1
V&V Disposition and Status	OK
V&V Charge Time	12.517305599391

A.2 Comments