

V&V Reference Report

L2 ASCDS Version : 8.4.5

Observation 11791 - L2 Version 2
Chandra X-Ray Center

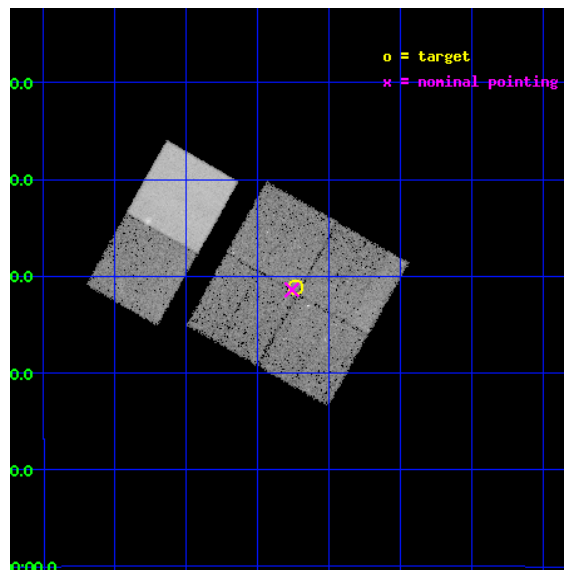
L2 Processing Date : Jun 15 2012

Contents

1	Front	2
2	OBI	3
2.1	OBI	3
2.1.1	Images	3
2.1.2	Bias	3
2.1.3	Parameters	4
2.1.4	Events	4
2.2	Compared Parameters	5
2.3	Aspect	6
2.4	Star Slots	9
2.4.1	Slot 3	9
2.4.2	Slot 4	10
2.4.3	Slot 5	11
2.4.4	Slot 6	12
2.4.5	Slot 7	13
2.5	FID Slots	14
2.5.1	Slot 0	14
2.5.2	Slot 1	15
2.5.3	Slot 2	16
A	Summary	17
A.1	Status	17
A.2	Comments	17

1 Front

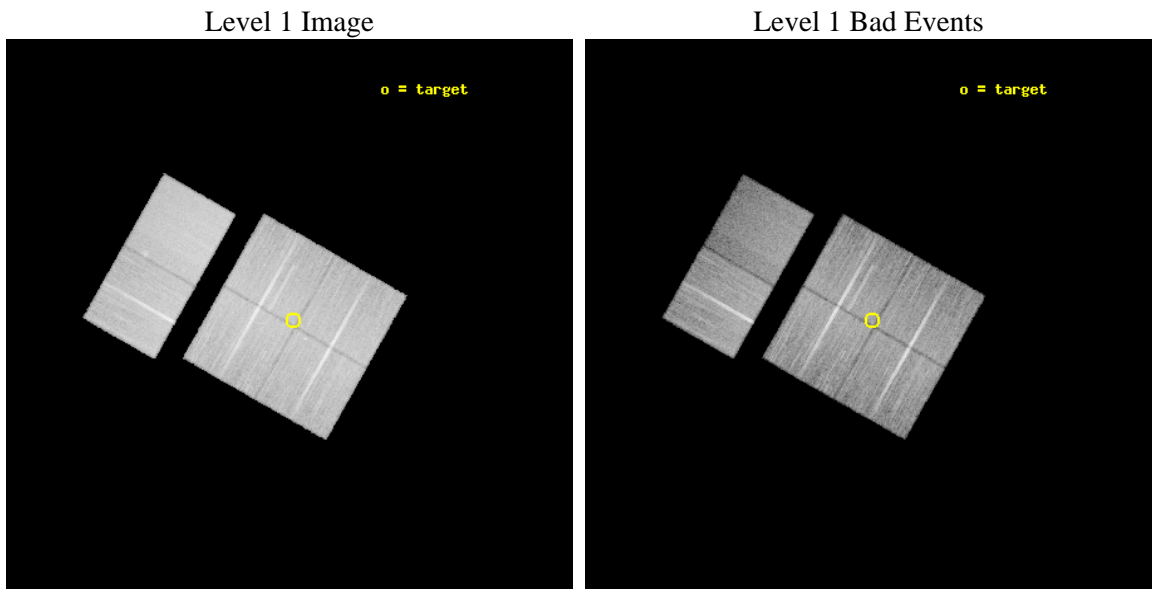
seq_num	900926	Sequence number
obs_id	11791	Observation id
title	Identifying Unidentified Fermi-LAT Objects (UFOs) at High-Latitude	
observer	Dr. C.C. Teddy Cheung	Principal investigator
object	J2339.8-0530	Source name
dtcycle	0	
cycle	P	events from which exps? Prim/Second/Both
ra_targ	354.934	Observer's specified target RA [deg]
dec_targ	-5.518	Observer's specified target Dec [deg]
ra_nom	354.93993112196	Nominal RA [deg]
dec_nom	-5.5235211330821	Nominal Dec [deg]
roll_nom	299.59343782453	Nominal Roll [deg]
revision	2	Processing version of data
ontime	21145.599921286	Sum of GTIs [s]
livetime	20877.841602731	Livetime [s]
ontime0	21139.117900491	Sum of GTIs [s]
ontime1	21145.599921286	Sum of GTIs [s]
ontime2	21145.599921286	Sum of GTIs [s]
ontime3	21145.599921286	Sum of GTIs [s]
ontime6	21145.599921286	Sum of GTIs [s]
ontime7	21145.599921286	Sum of GTIs [s]
l2events	172292	Number of level 2 events



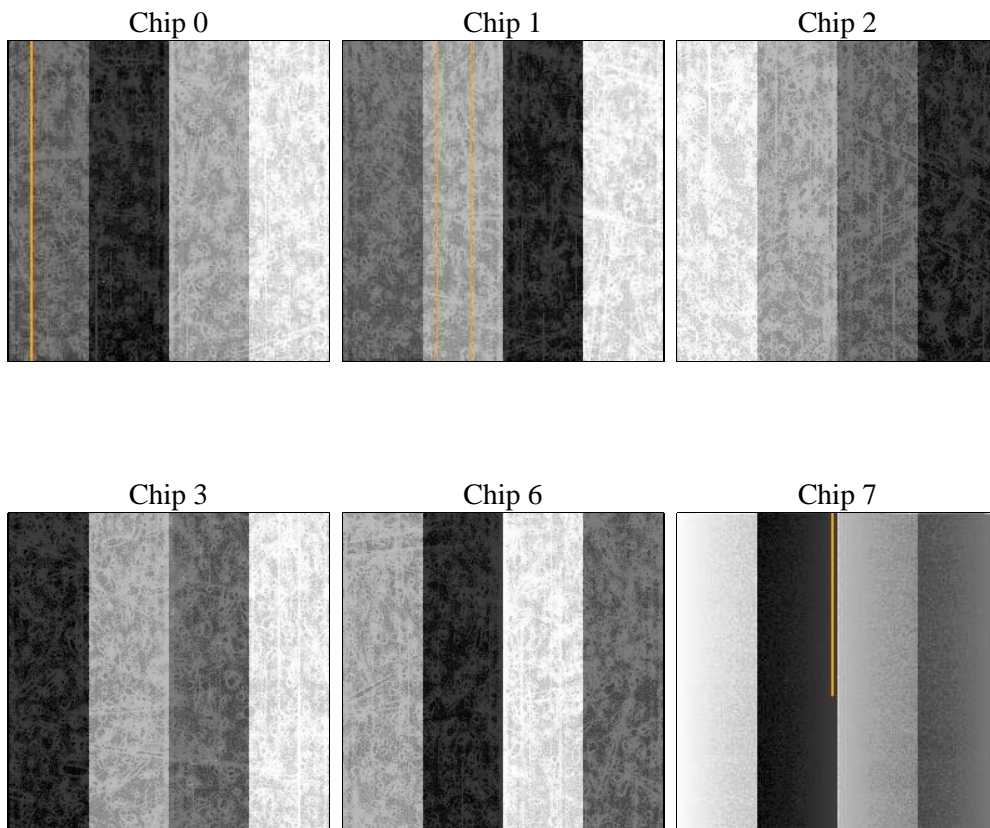
2 OBI

2.1 OBI

2.1.1 Images



2.1.2 Bias



2.1.3 Parameters

obi_num	0	Obi number	sched_exp_time	21000.000000	[s] Scheduled observation exposure time
ascdsver	8.4.5	Processing system revision	ontime	21145.599921286	Sum of GTIs [s]
caldbver	4.4.10	 	ontime0	21139.117900491	Sum of GTIs [s]
date	2012-06-15T12:43:44	Date and time of file creation	ontime1	21145.599921286	Sum of GTIs [s]
revision	2	Processing version of data	ontime2	21145.599921286	Sum of GTIs [s]
			ontime3	21145.599921286	Sum of GTIs [s]
			ontime6	21145.599921286	Sum of GTIs [s]
			ontime7	21145.599921286	Sum of GTIs [s]
			l1events	1120960	Number of level 1 events

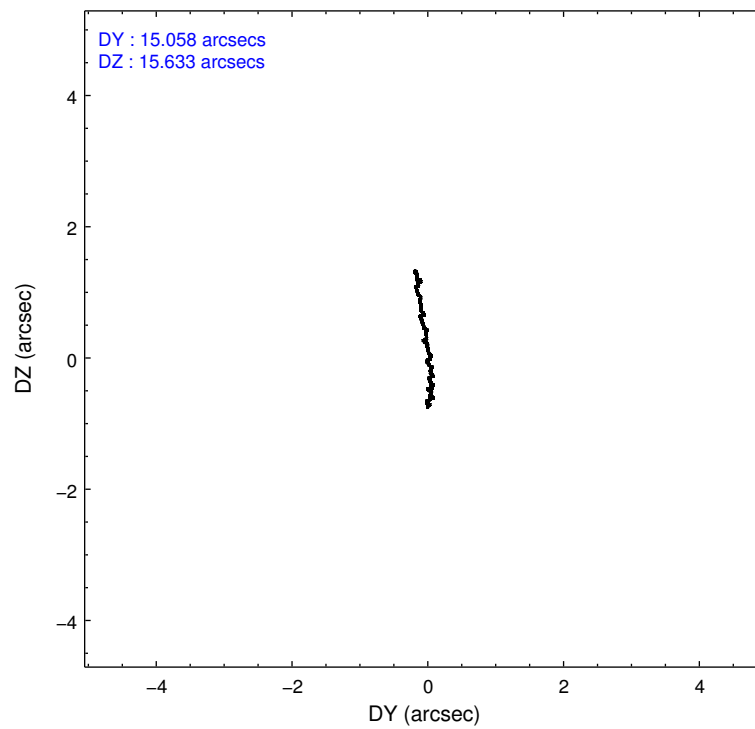
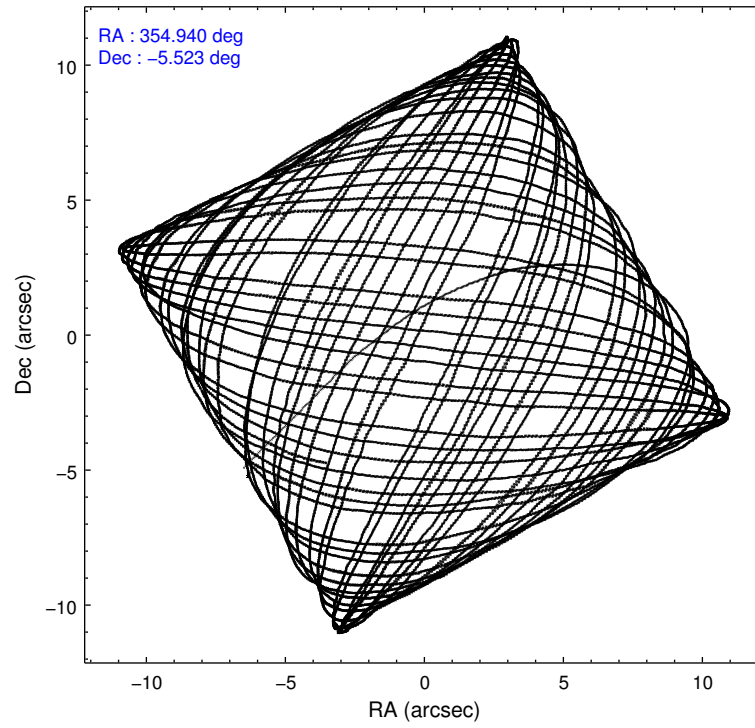
2.1.4 Events

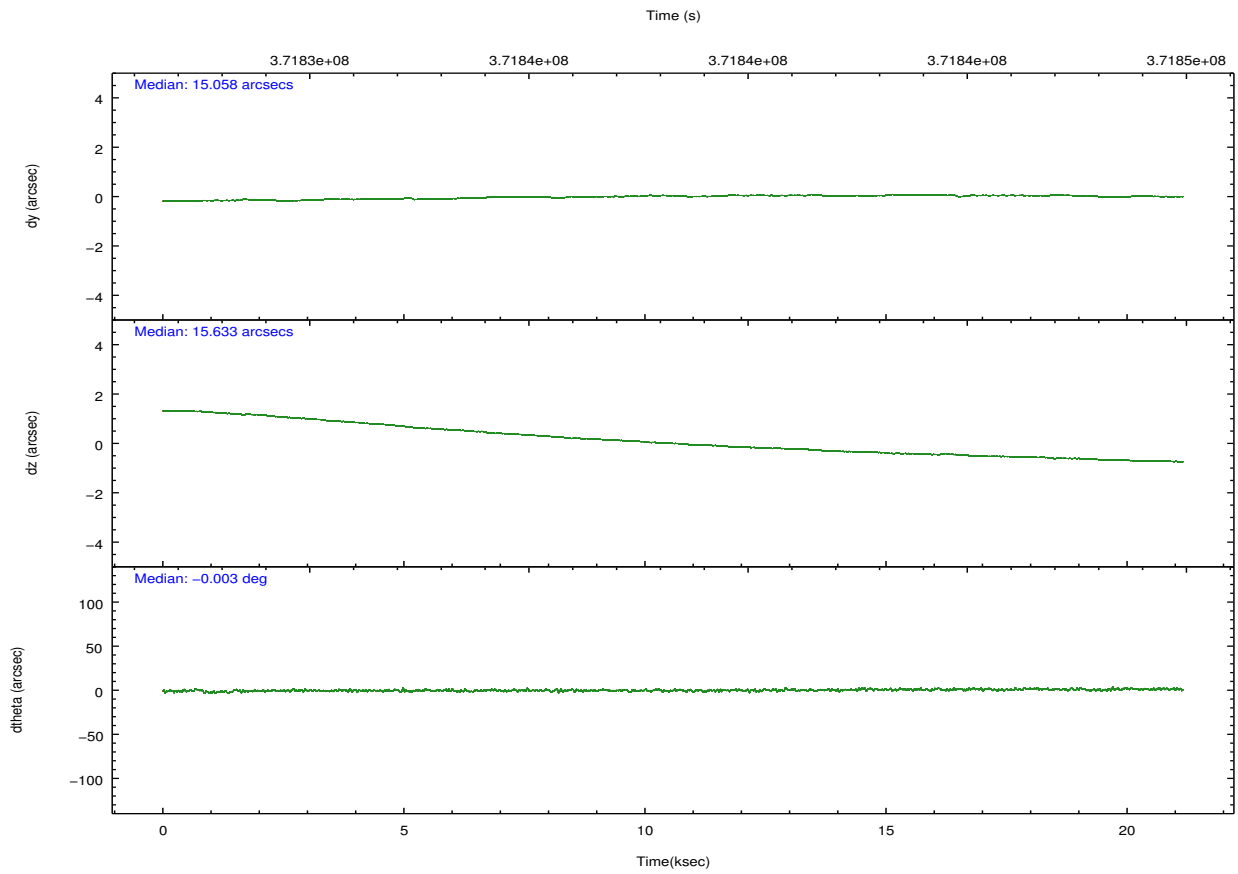
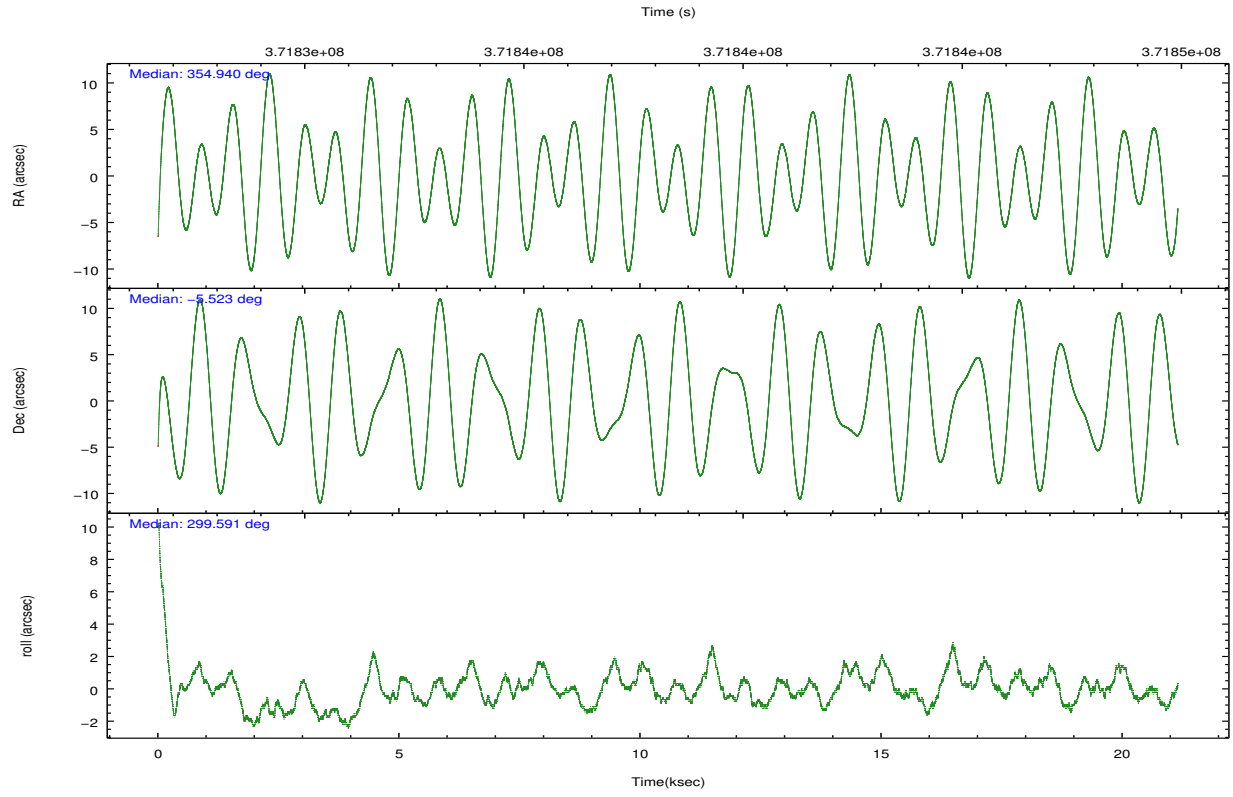
	ccd 0	ccd 1	ccd 2	ccd 3	ccd 6	ccd 7		ccd 0	ccd 1	ccd 2	ccd 3	ccd 6	ccd 7
level 1 events	174074	170818	190920	179139	192912	213097	grade 0 events	6982	7792	6514	6298	6977	8994
rejected events	154884	149879	173126	161705	173288	117301		4%	4%	3%	3%	3%	4%
rejected %	88%	87%	90%	90%	89%	55%	grade 1 events	93	103	106	114	109	279
								0%	0%	0%	0%	0%	0%
							grade 2 events	4732	4792	4420	3822	4572	19774
								2%	2%	2%	2%	2%	9%
							grade 3 events	2081	2235	1914	2020	2037	8808
								1%	1%	1%	1%	1%	4%
							grade 4 events	1974	2148	1884	1956	2057	8696
								1%	1%	0%	1%	1%	4%
							grade 5 events	6523	7267	6189	7685	8072	22232
								3%	4%	3%	4%	4%	10%
							grade 6 events	3686	4295	3319	3584	4273	50919
								2%	2%	1%	2%	2%	23%
							grade 7 events	148003	142186	166574	153660	164815	93395
								85%	83%	87%	85%	85%	43%

2.2 Compared Parameters

Parameter	Planned	Actual	Parameter	Planned	Actual
Instrument	ACIS	ACIS	Obspar format version number	7	7
Detector	ACIS-012367	ACIS-012367	Obspar file type	PREDICTED	ACTUAL
Grating	NONE	NONE	Obspar update status	NONE	UPDATED
Data mode	FAINT	FAINT	CCD I0 on	Y	Y
Observation mode	POINTING	POINTING	CCD I1 on	Y	Y
[deg] Pointing RA	354.916049	354.9399311219585	CCD I2 on	Y	Y
[deg] Pointing Dec	-5.509699	-5.523521133082138	CCD I3 on	Y	Y
[deg] Pointing Roll	299.382454	299.59343782453	CCD S0 on	N	N
[mm] SIM focus pos	-0.782348	-0.7809083437167272	CCD S1 on	N	N
[mm] SIM defocus	0	0.001439871863259334	CCD S2 on	O2	Y
[mm] SIM translation stage pos	-233.592463	-233.5874344608287	CCD S3 on	O1	Y
[mm] SIM translation stage offset	0	-0.005018542100998502	CCD S4 on	N	N
[s] Observation start time (MET)	371827872.184000	371826665.71549	CCD S5 on	N	N
Observation start date	2009-10-13T13:30:06	2009-10-13T13:11:05	Number of optional ACIS chips dropped	0	0
[s] Observation end time (MET)	371848872.184000	371849835.84165	On-chip summing requested	N	N
Observation end date	2009-10-13T19:20:06	2009-10-13T19:37:15	Subarray requested	NONE	NONE
Read mode	TIMED	TIMED	Alternating exposures requested	N	N
			[s] Primary exposure time	0.000000	3.2

2.3 Aspect



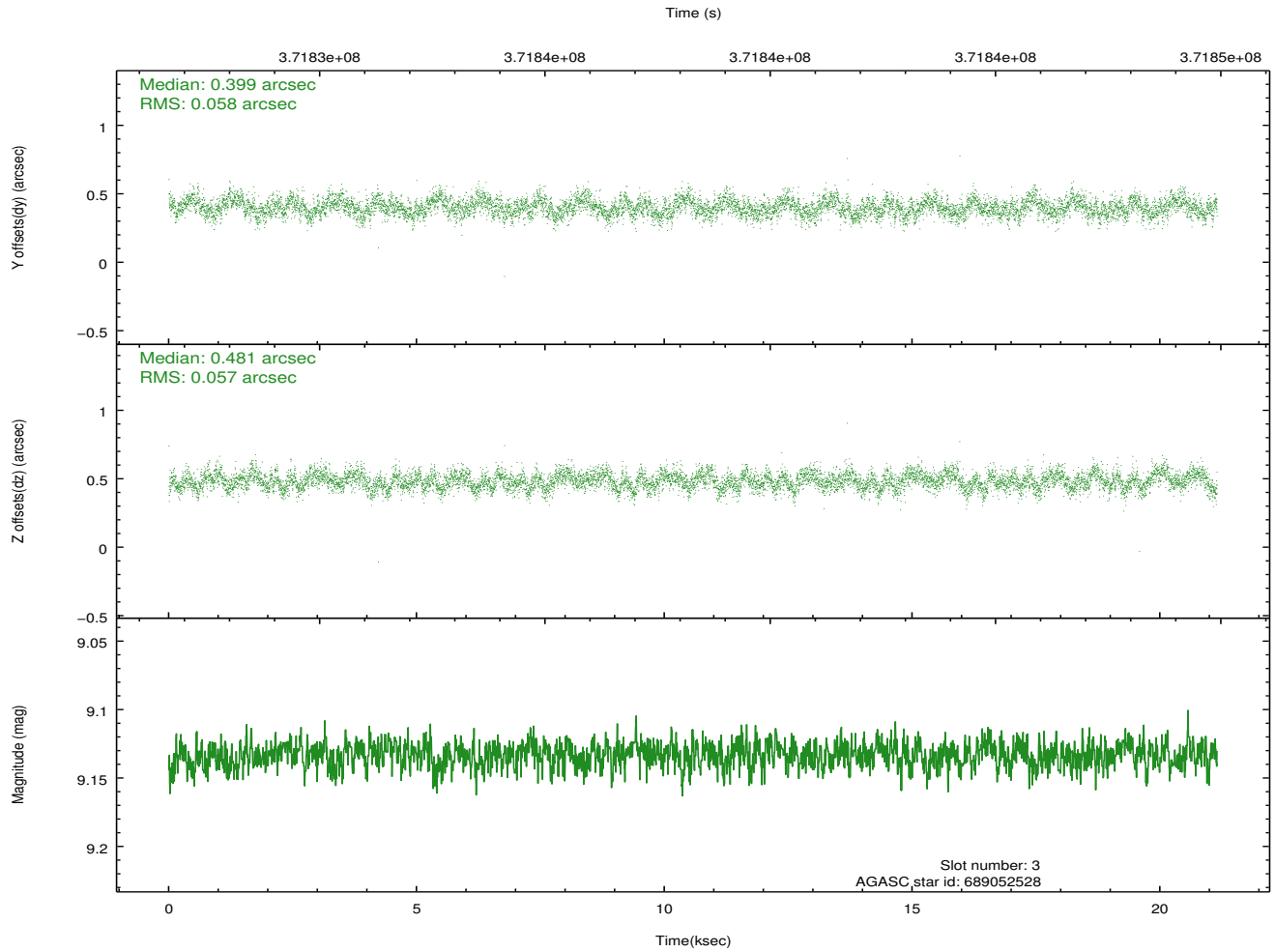
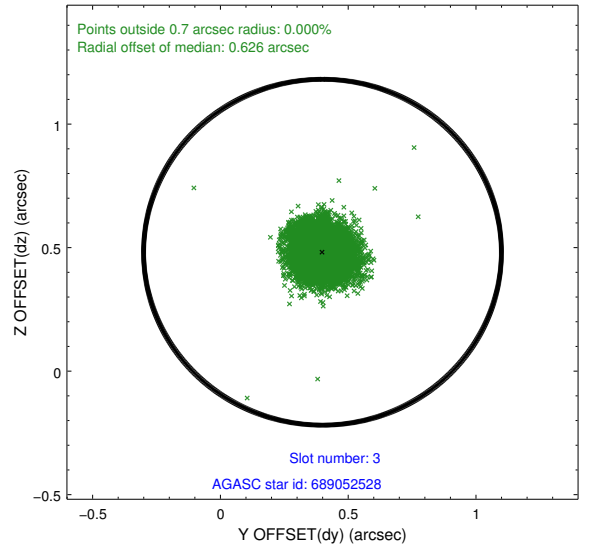
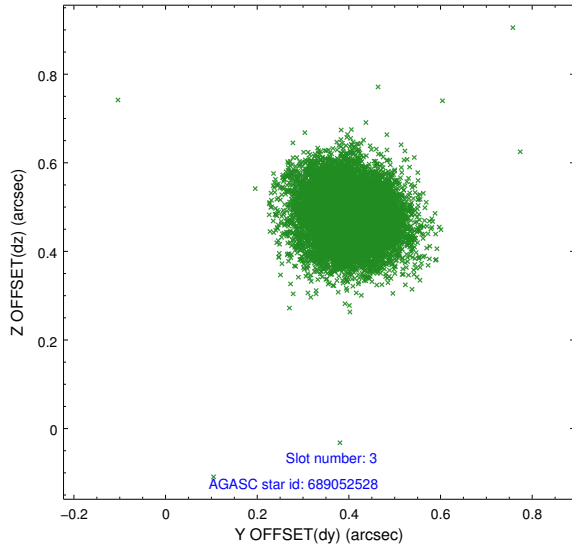


Slot Statistics

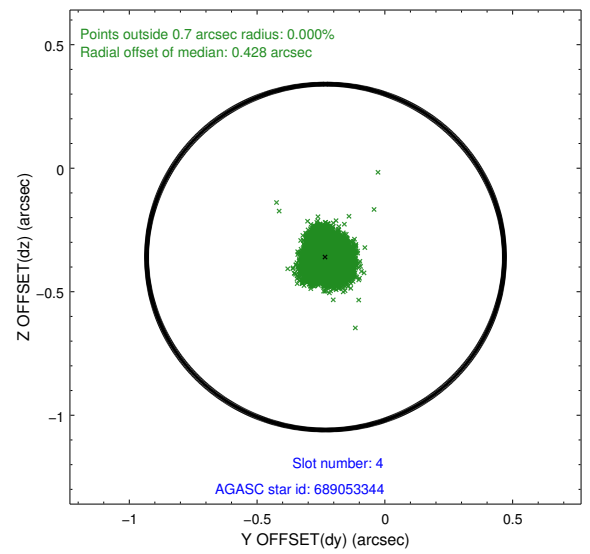
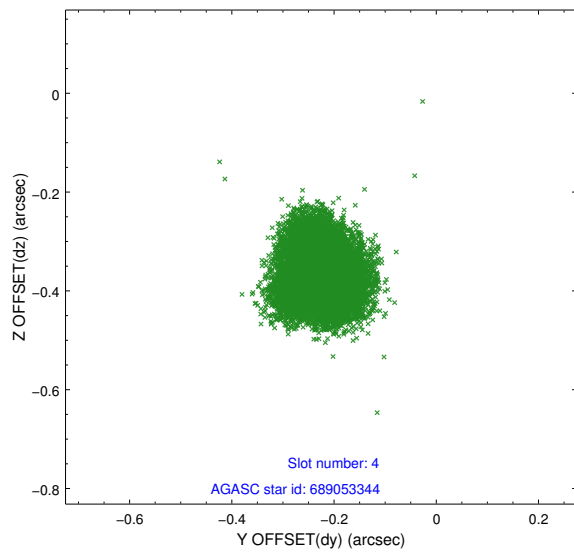
slot	status	id	mag	n_pts	med_dy	med_dz	dr1	dr2	ra	dec	mean_y	mean_z
0	FID	ACIS-I-1	7.00	5158	-0.036	0.009	0.044	0.057	0.000000	0.000000	924.40	-839.36
1	FID	ACIS-I-2	6.91	5160	-0.143	-0.048	0.018	0.024	0.000000	0.000000	-769.70	-845.96
2	FID	ACIS-I-4	6.93	5160	0.081	0.106	0.028	0.044	0.000000	0.000000	2144.30	1060.48
3	GUIDE	689052528	9.13	10303	0.399	0.481	0.087	0.139	354.404559	-5.107697	-2159.35	-887.78
4	GUIDE	689053344	7.26	10319	-0.232	-0.360	0.072	0.109	354.960733	-5.546790	195.01	73.62
5	GUIDE	689053832	8.23	10317	0.078	-0.078	0.068	0.109	354.470402	-5.978360	689.16	-2218.06
6	GUIDE	689184448	9.37	10308	-0.330	0.033	0.105	0.166	355.420276	-5.506970	878.84	1578.82
7	GUIDE	689052256	8.89	10308	0.082	-0.072	0.077	0.130	354.637591	-5.988137	1012.72	-1713.42

2.4 Star Slots

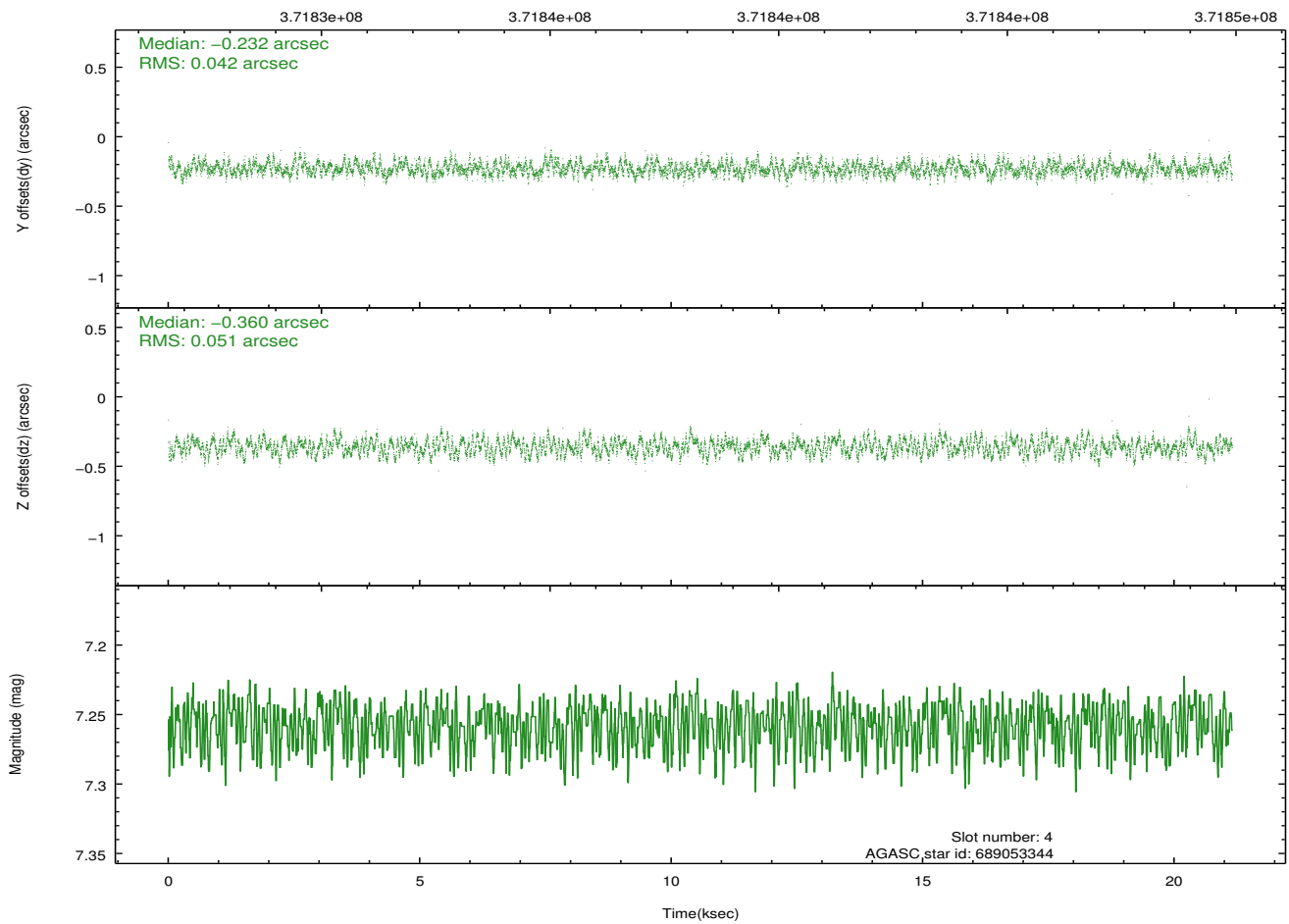
2.4.1 Slot 3



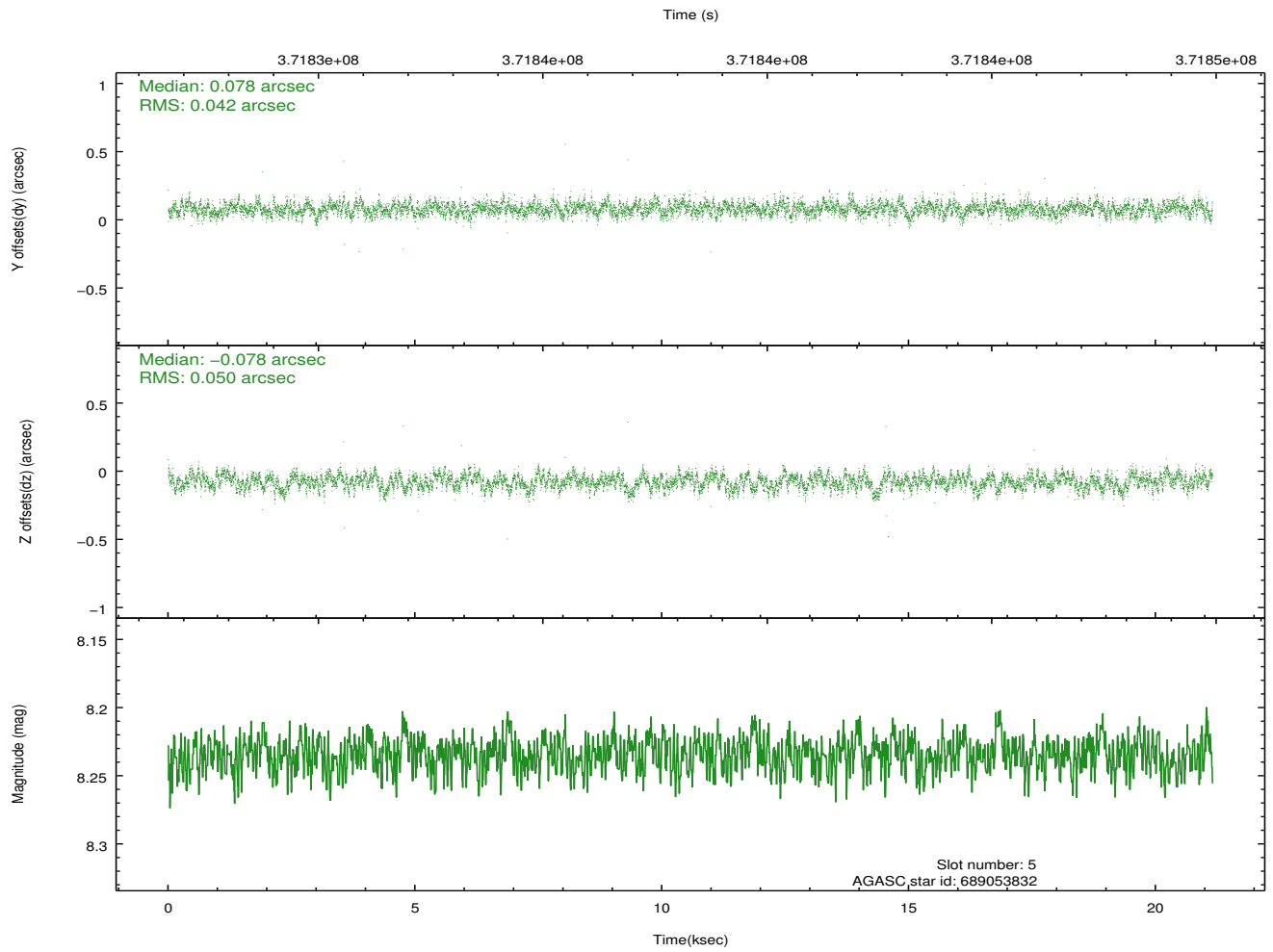
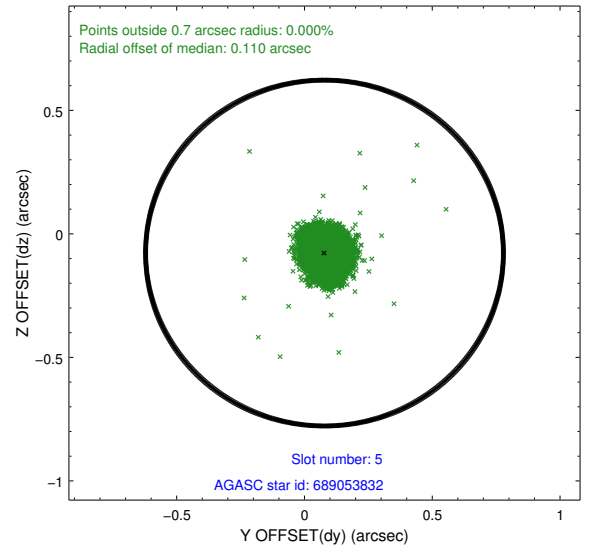
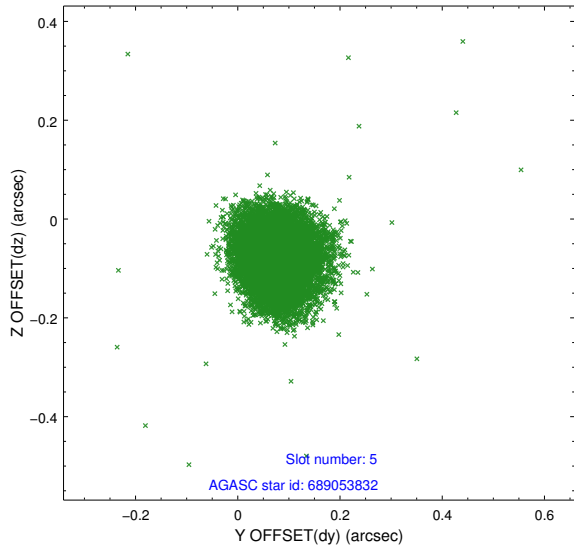
2.4.2 Slot 4



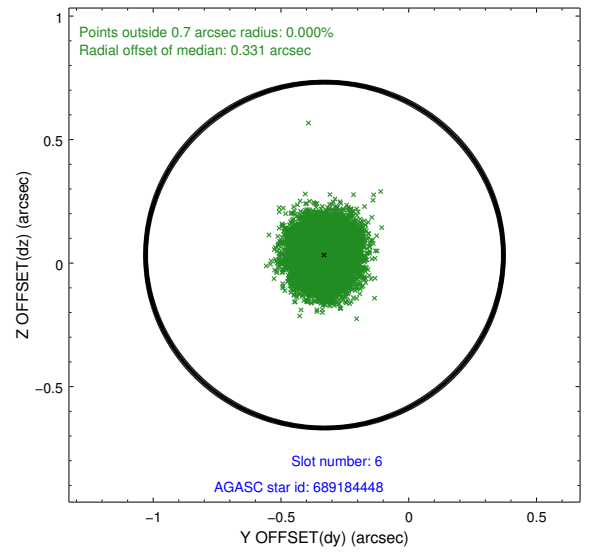
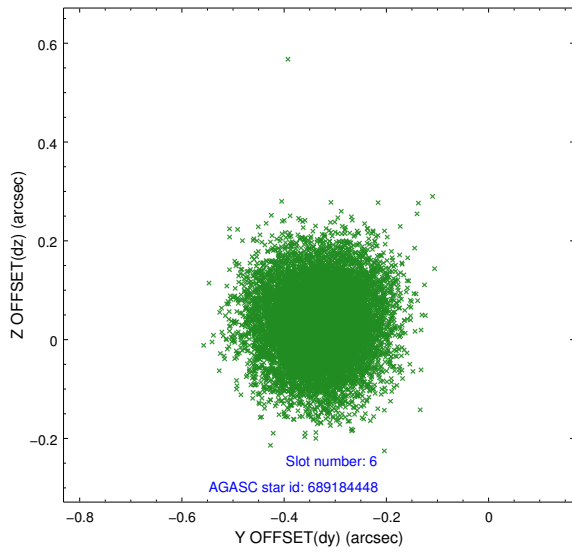
Time (s)



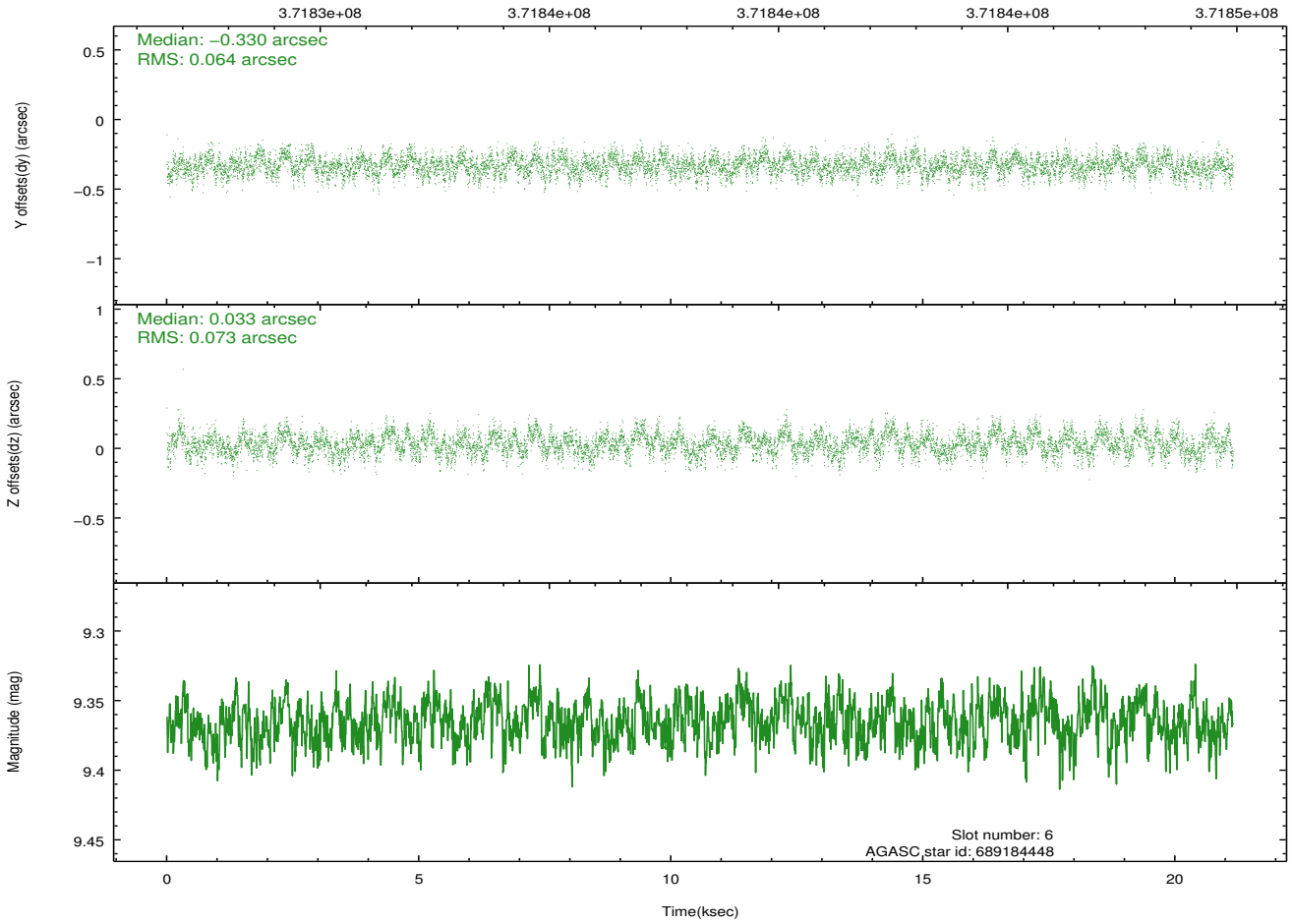
2.4.3 Slot 5



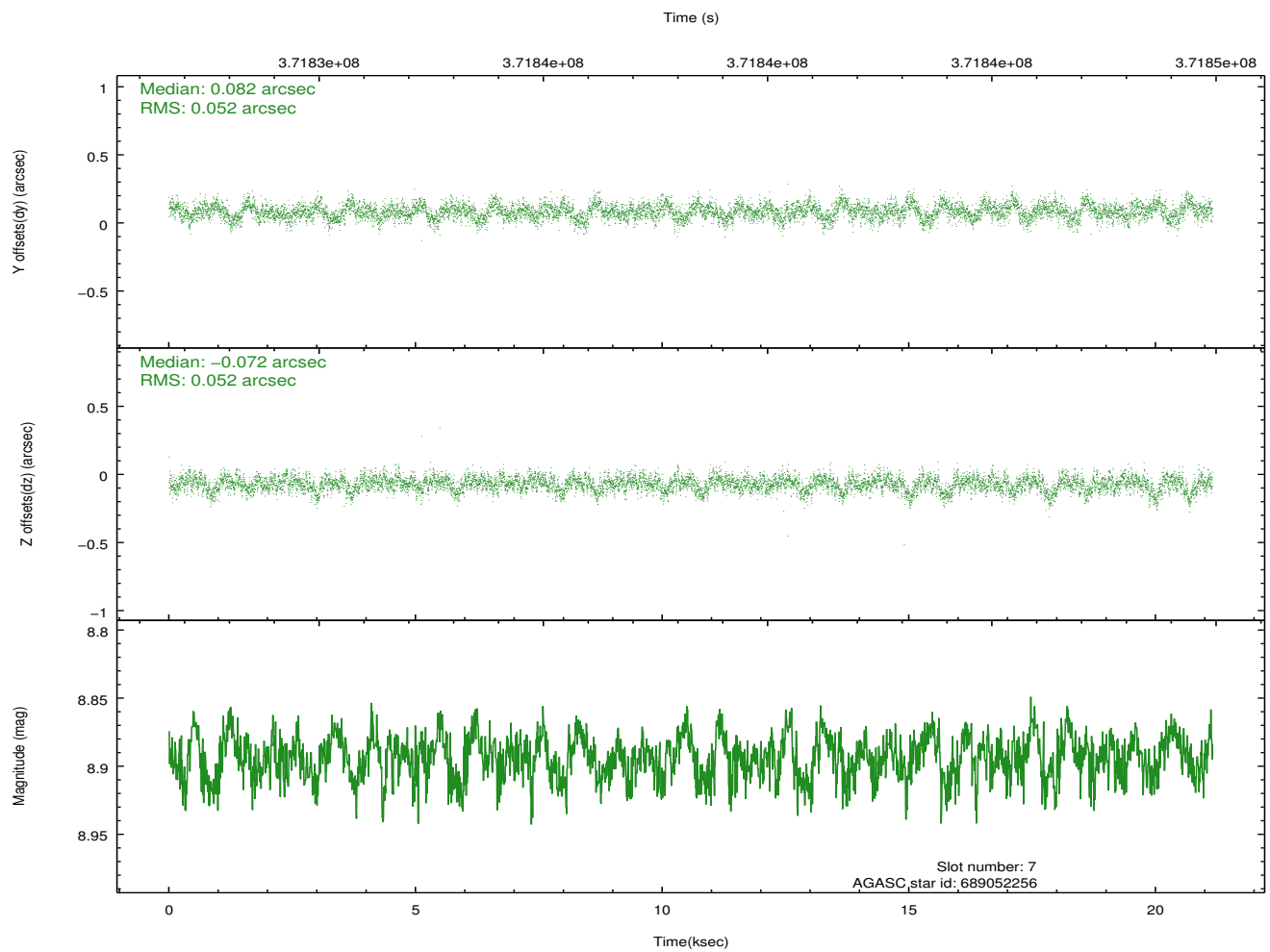
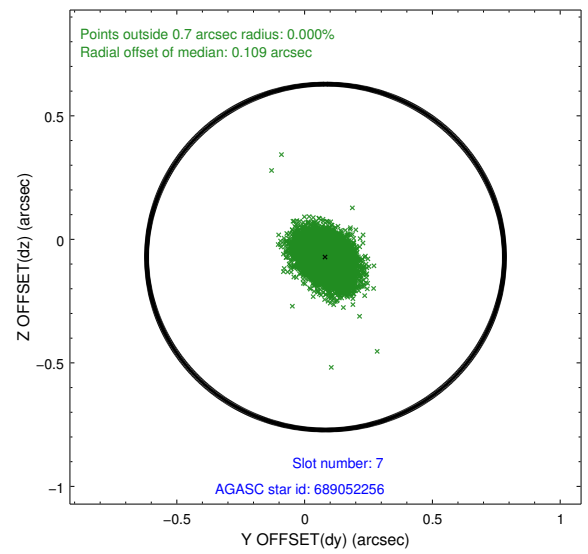
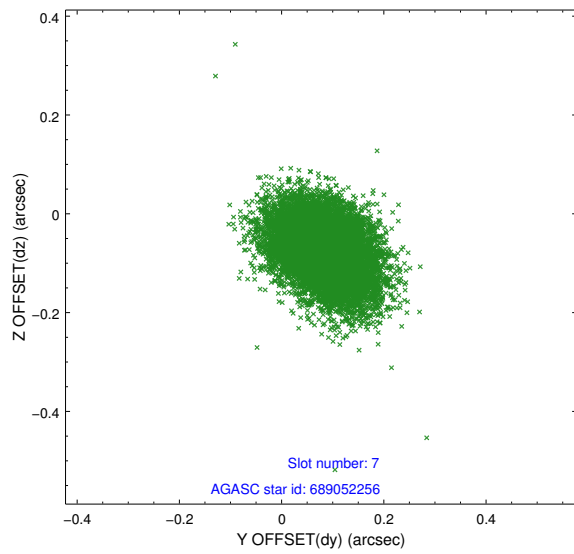
2.4.4 Slot 6



Time (s)

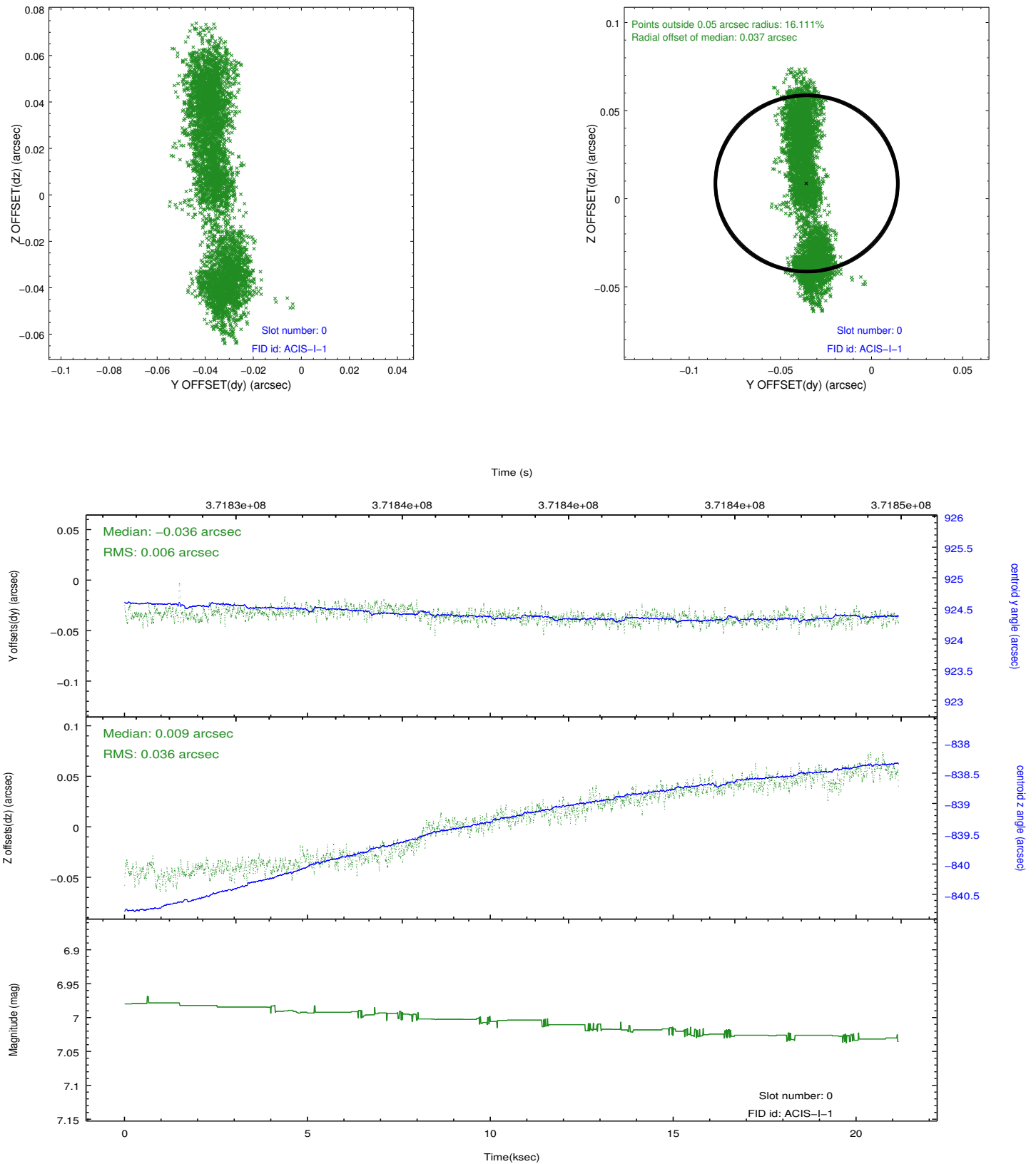


2.4.5 Slot 7

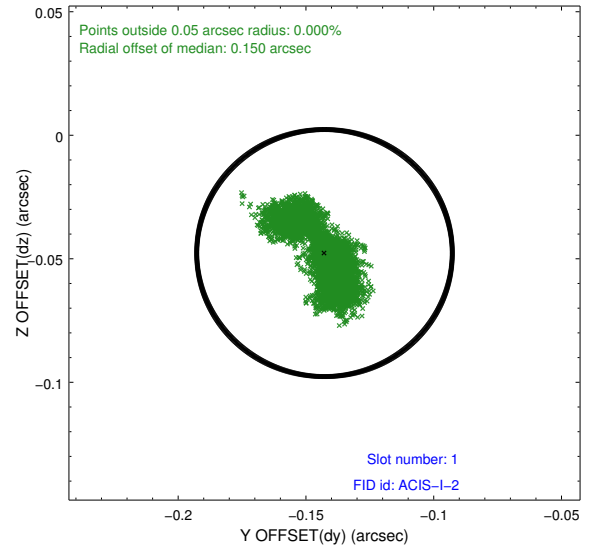
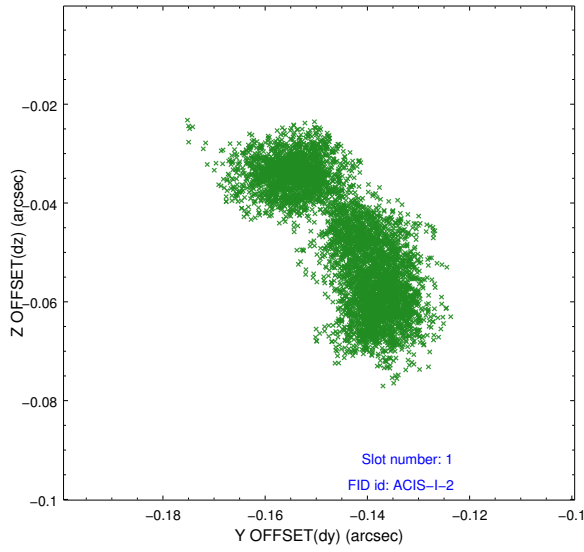


2.5 FID Slots

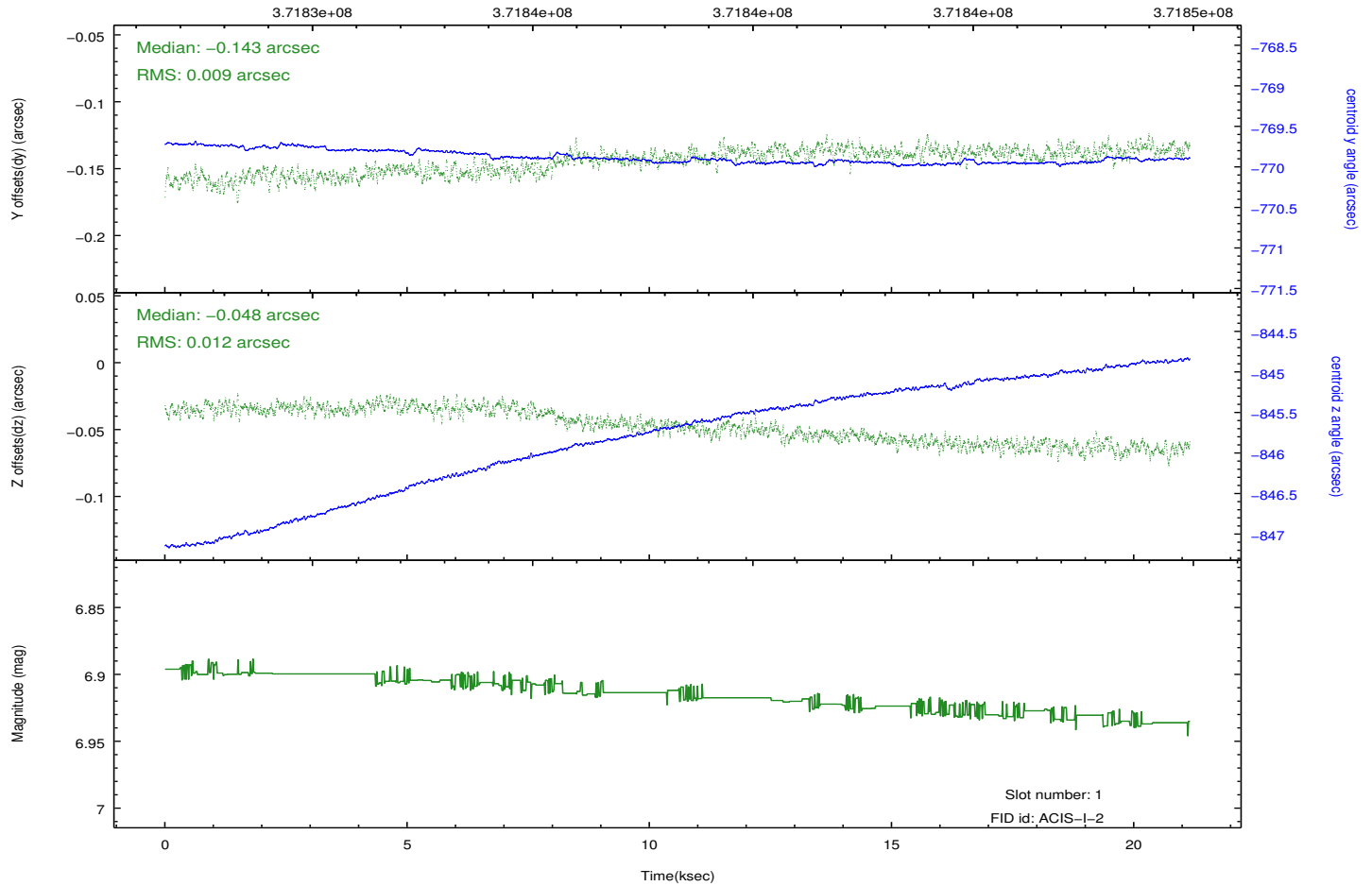
2.5.1 Slot 0



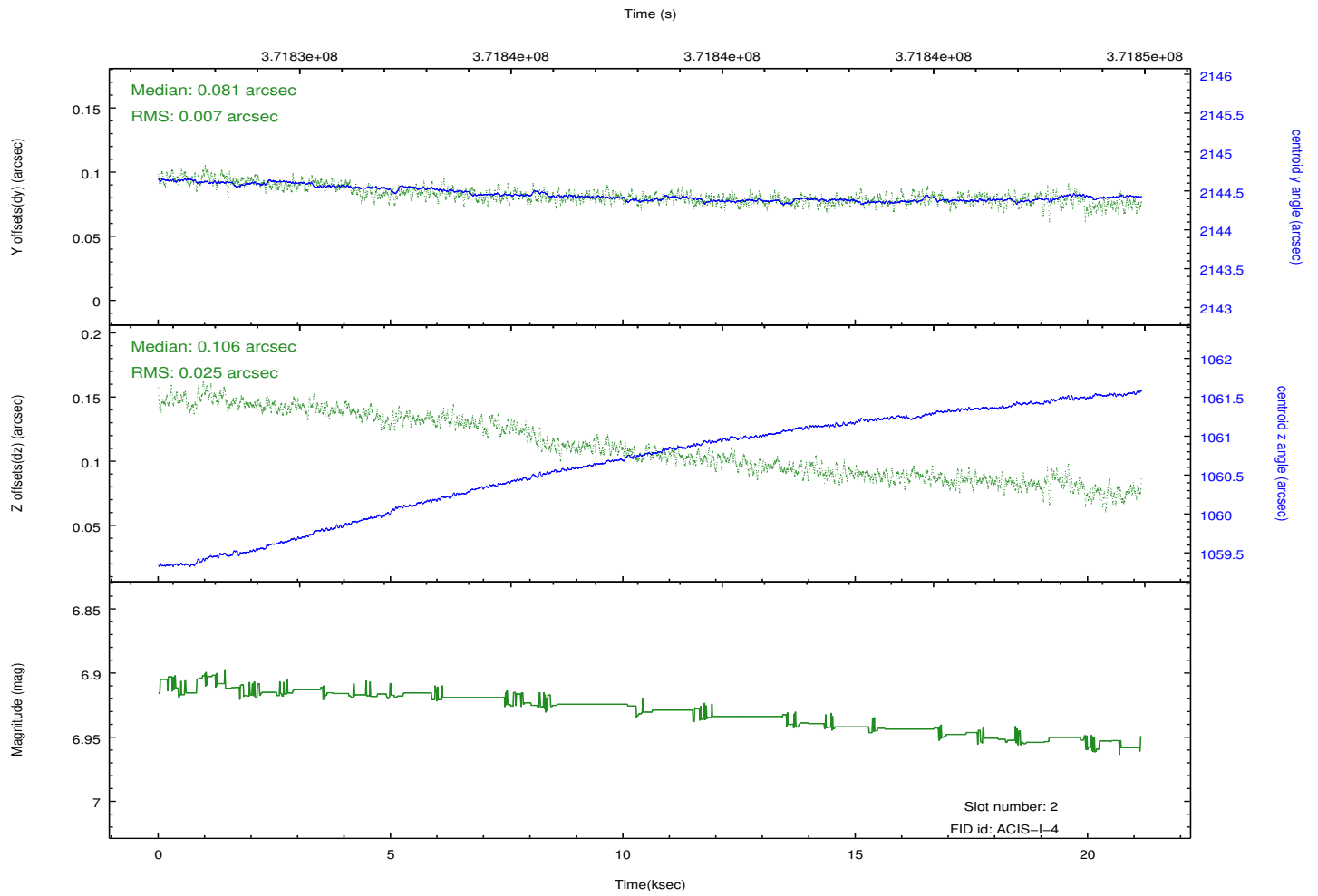
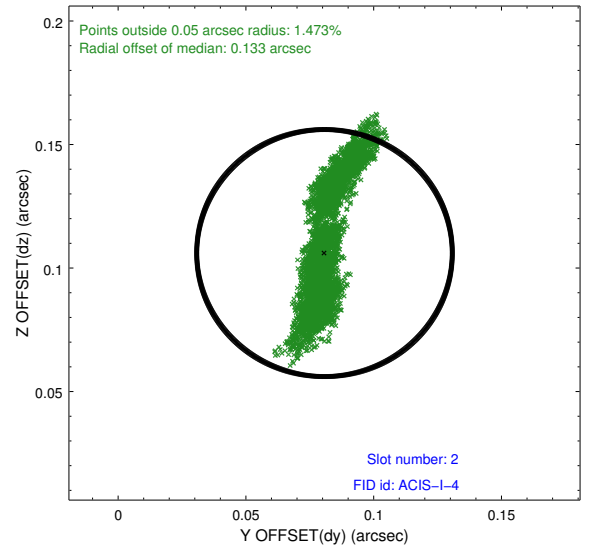
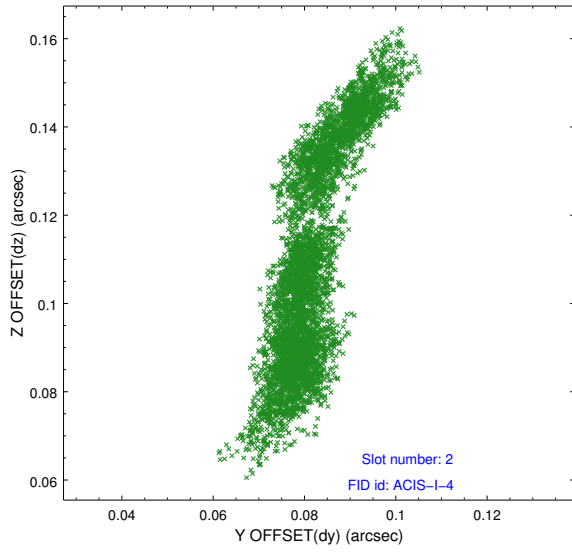
2.5.2 Slot 1



Time (s)



2.5.3 Slot 2



A Summary

A.1 Status

V&V Scientist	Jen Lauer
V&V Date (YYYY-MM-DD)	2012.06.19
V&V Edition	1
V&V Disposition and Status	OK
V&V Charge Time	21.145599921286

A.2 Comments