

V&V Reference Report

L2 ASCDS Version : 8.4.5

Observation 11821 - L2 Version 2
Chandra X-Ray Center

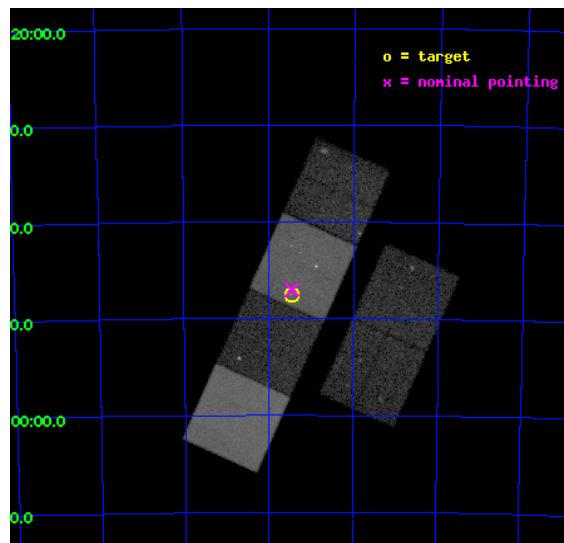
L2 Processing Date : Jul 8 2012

Contents

1	Front	2
2	OBI	3
2.1	OBI	3
2.1.1	Images	3
2.1.2	Bias	3
2.1.3	Parameters	4
2.1.4	Events	4
2.2	Compared Parameters	5
2.3	Aspect	6
2.4	Star Slots	9
2.4.1	Slot 3	9
2.4.2	Slot 4	10
2.4.3	Slot 5	11
2.4.4	Slot 6	12
2.4.5	Slot 7	13
2.5	FID Slots	14
2.5.1	Slot 0	14
2.5.2	Slot 1	15
2.5.3	Slot 2	16
A	Summary	17
A.1	Status	17
A.2	Comments	17

1 Front

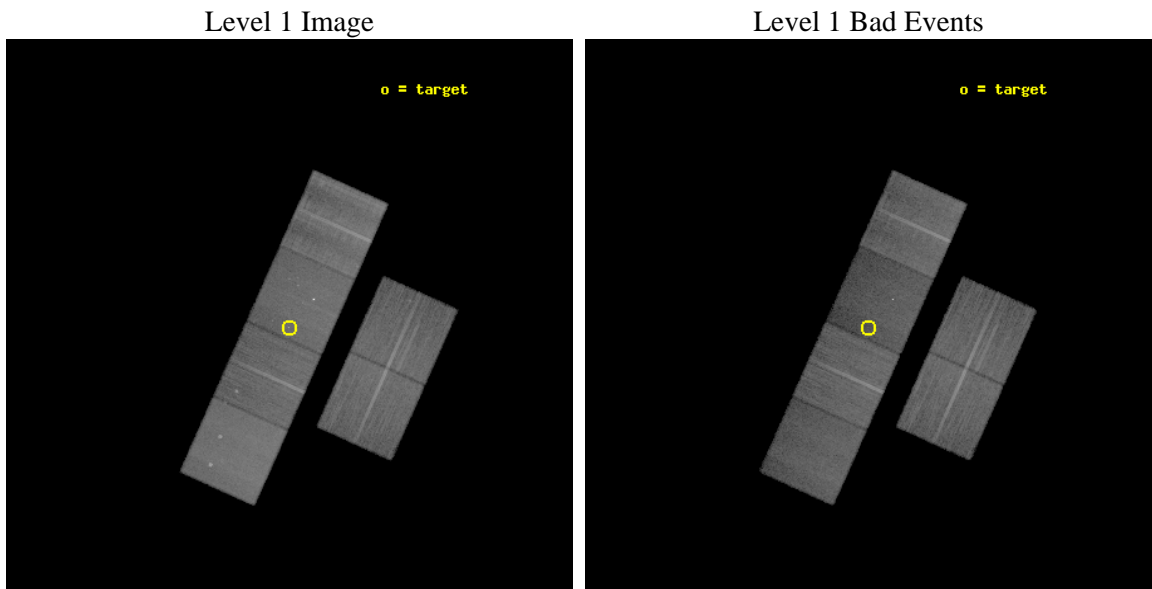
seq_num	501338	Sequence number
obs_id	11821	Observation id
title	HFPK 334: A New Supernova Remnant in the Small Magellanic Cloud	Pr
observer	Dr. Peter Predehl	Principal investigator
object	HFPK 334	Source name
dtcycle	0	
cycle	P	events from which exps? Prim/Second/Both
ra_targ	15.866667	Observer's specified target RA [deg]
dec_targ	-72.791667	Observer's specified target Dec [deg]
ra_nom	15.864109228327	Nominal RA [deg]
dec_nom	-72.783718752627	Nominal Dec [deg]
roll_nom	294.15417276433	Nominal Roll [deg]
revision	2	Processing version of data
ontime	28550.399893701	Sum of GTIs [s]
livetime	28188.87753926	Livetime [s]
ontime2	28550.399893701	Sum of GTIs [s]
ontime3	28547.158923328	Sum of GTIs [s]
ontime5	28550.399893701	Sum of GTIs [s]
ontime6	28543.917922974	Sum of GTIs [s]
ontime7	28550.399893701	Sum of GTIs [s]
ontime8	28550.399893701	Sum of GTIs [s]
l2events	309509	Number of level 2 events



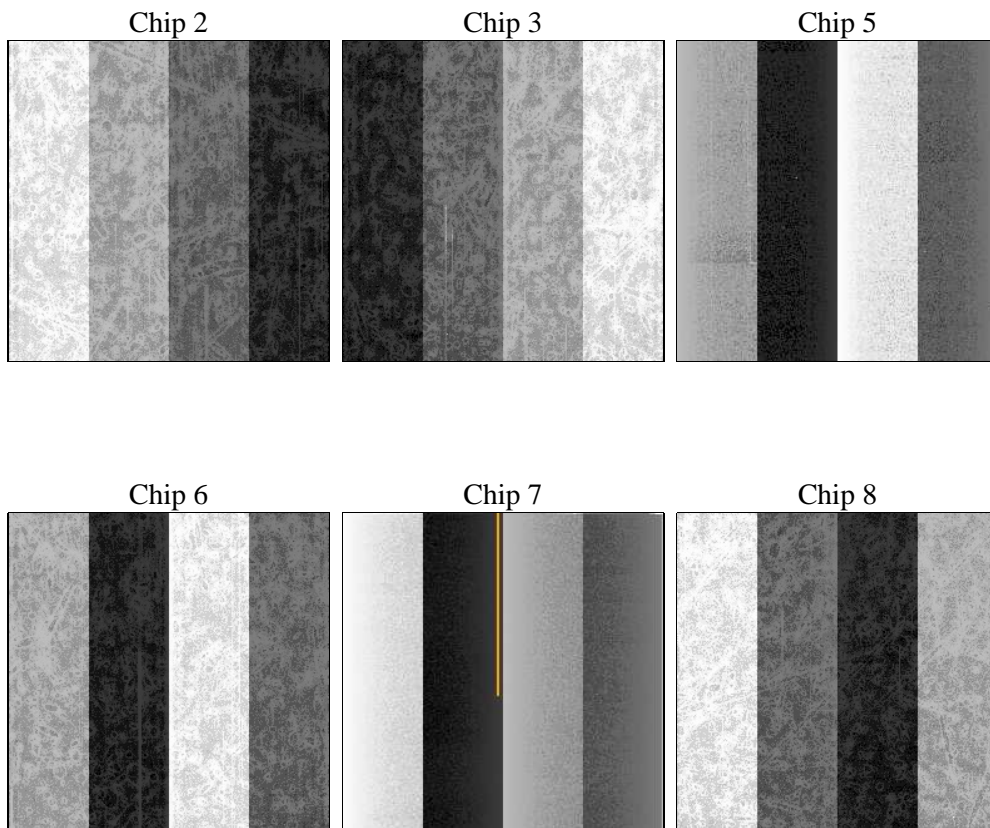
2 OBI

2.1 OBI

2.1.1 Images



2.1.2 Bias



2.1.3 Parameters

obi_num	1	Obi number	sched_exp_time	28500.000000	[s] Scheduled observation exposure time
ascdsver	8.4.5	Processing system revision	ontime	28550.399893701	Sum of GTIs [s]
caldsver	4.5.0	 	ontime2	28550.399893701	Sum of GTIs [s]
date	2012-07-08T04:59:59	Date and time of file creation	ontime3	28547.158923328	Sum of GTIs [s]
revision	2	Processing version of data	ontime5	28550.399893701	Sum of GTIs [s]
			ontime6	28543.917922974	Sum of GTIs [s]
			ontime7	28550.399893701	Sum of GTIs [s]
			ontime8	28550.399893701	Sum of GTIs [s]
			l1events	1284867	Number of level 1 events

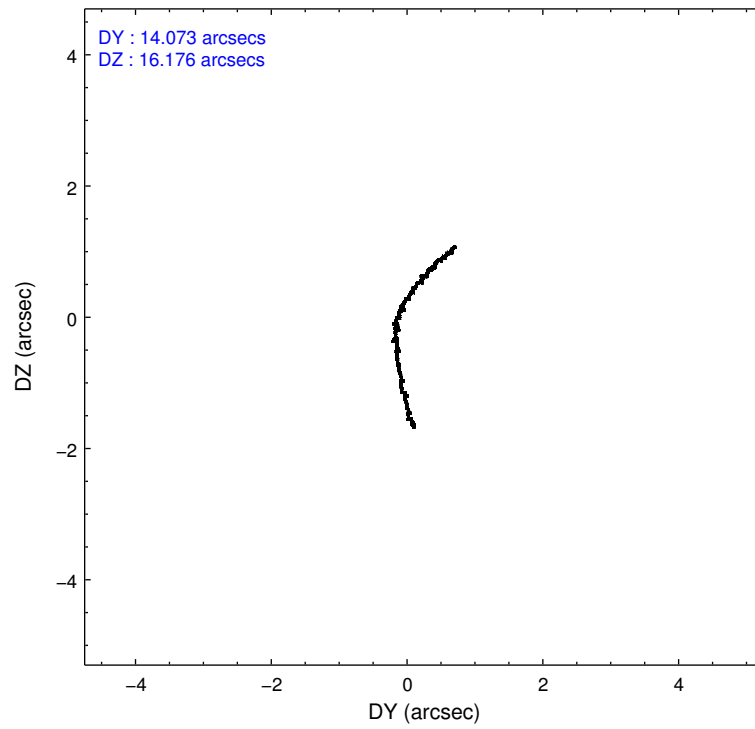
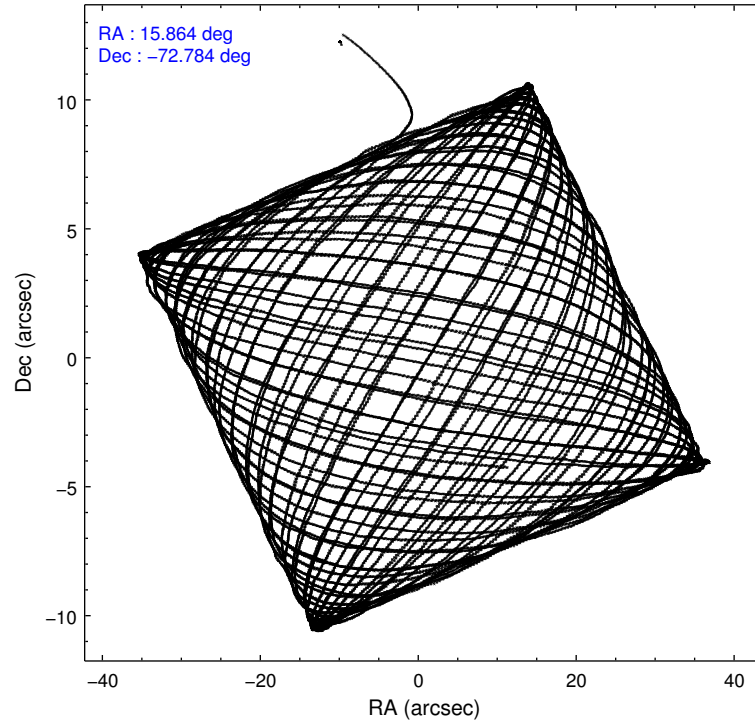
2.1.4 Events

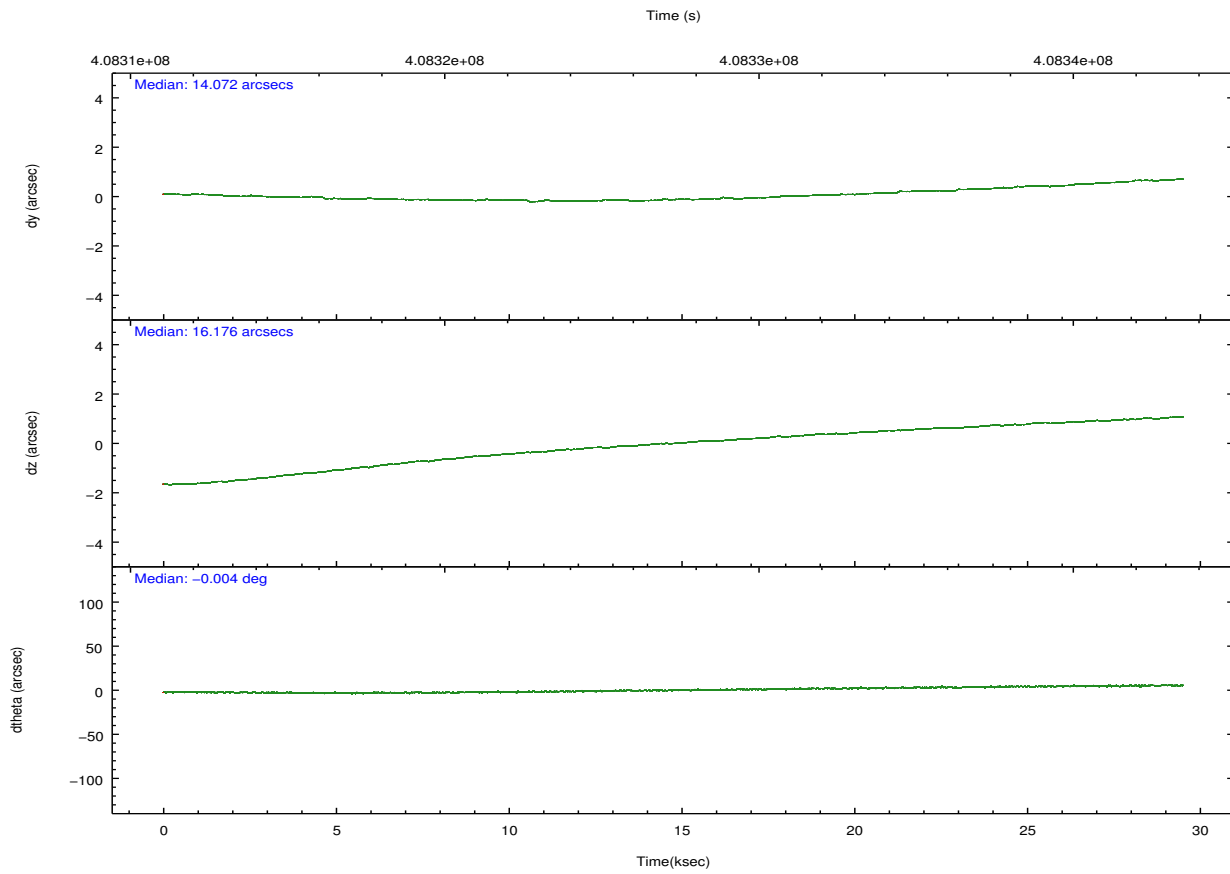
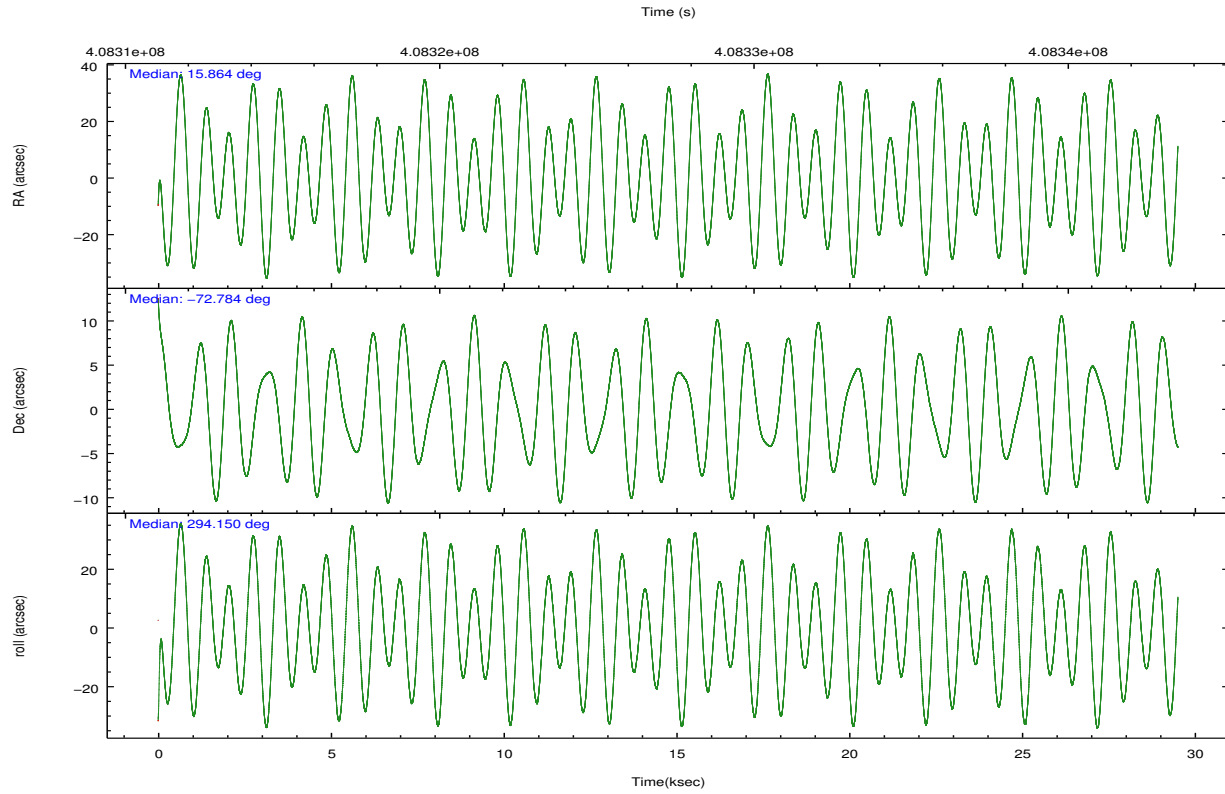
	ccd 2	ccd 3	ccd 5	ccd 6	ccd 7	ccd 8		ccd 2	ccd 3	ccd 5	ccd 6	ccd 7	ccd 8
level 1 events	194495	182435	259989	193387	213728	240833	grade 0 events	7676	7231	12396	8344	12464	19226
rejected events	173963	163101	123580	171387	104936	174696		3%	3%	4%	4%	5%	7%
rejected %	89%	89%	47%	88%	49%	72%	grade 1 events	128	119	488	88	551	208
								0%	0%	0%	0%	0%	0%
							grade 2 events	4961	4261	42024	4852	23782	15891
								2%	2%	16%	2%	11%	6%
							grade 3 events	2157	2052	5876	2262	10093	7032
								1%	1%	2%	1%	4%	2%
							grade 4 events	2158	2091	5572	2151	9877	6522
								1%	1%	2%	1%	4%	2%
							grade 5 events	6642	7244	20910	7470	22046	11249
								3%	3%	8%	3%	10%	4%
							grade 6 events	3584	3703	70573	4396	52595	17472
								1%	2%	27%	2%	24%	7%
							grade 7 events	167189	155734	102150	163824	82320	163233
								85%	85%	39%	84%	38%	67%

2.2 Compared Parameters

Parameter	Planned	Actual	Parameter	Planned	Actual
Instrument	ACIS	ACIS	Obspar format version number	7	7
Detector	ACIS-235678	ACIS-235678	Obspar file type	PREDICTED	ACTUAL
Grating	NONE	NONE	Obspar update status	NONE	UPDATED
Data mode	VFAINT	VFAINT	CCD I0 on	N	N
Observation mode	POINTING	POINTING	CCD I1 on	N	N
[deg] Pointing RA	15.788643	15.86410922832713	CCD I2 on	Y	Y
[deg] Pointing Dec	-72.767997	-72.78371875262698	CCD I3 on	Y	Y
[deg] Pointing Roll	293.925478	294.1541727643274	CCD S0 on	N	N
[mm] SIM focus pos	-0.684267	-0.6828225247311905	CCD S1 on	O1	Y
[mm] SIM defocus	0	0.001444936568705701	CCD S2 on	Y	Y
[mm] SIM translation stage pos	-190.132523	-190.1400660498719	CCD S3 on	Y	Y
[mm] SIM translation stage offset	0	0.00754346686406393	CCD S4 on	Y	Y
[s] Observation start time (MET)	408313508.184000	408311556.41122	CCD S5 on	N	N
Observation start date	2010-12-09T20:24:02	2010-12-09T19:52:36	Number of optional ACIS chips dropped	0	0
[s] Observation end time (MET)	408342008.184000	408343012.63784	On-chip summing requested	N	N
Observation end date	2010-12-10T04:19:02	2010-12-10T04:36:52	Subarray requested	NONE	NONE
Read mode	TIMED	TIMED	Alternating exposures requested	N	N
			[s] Primary exposure time	0.000000	3.2

2.3 Aspect



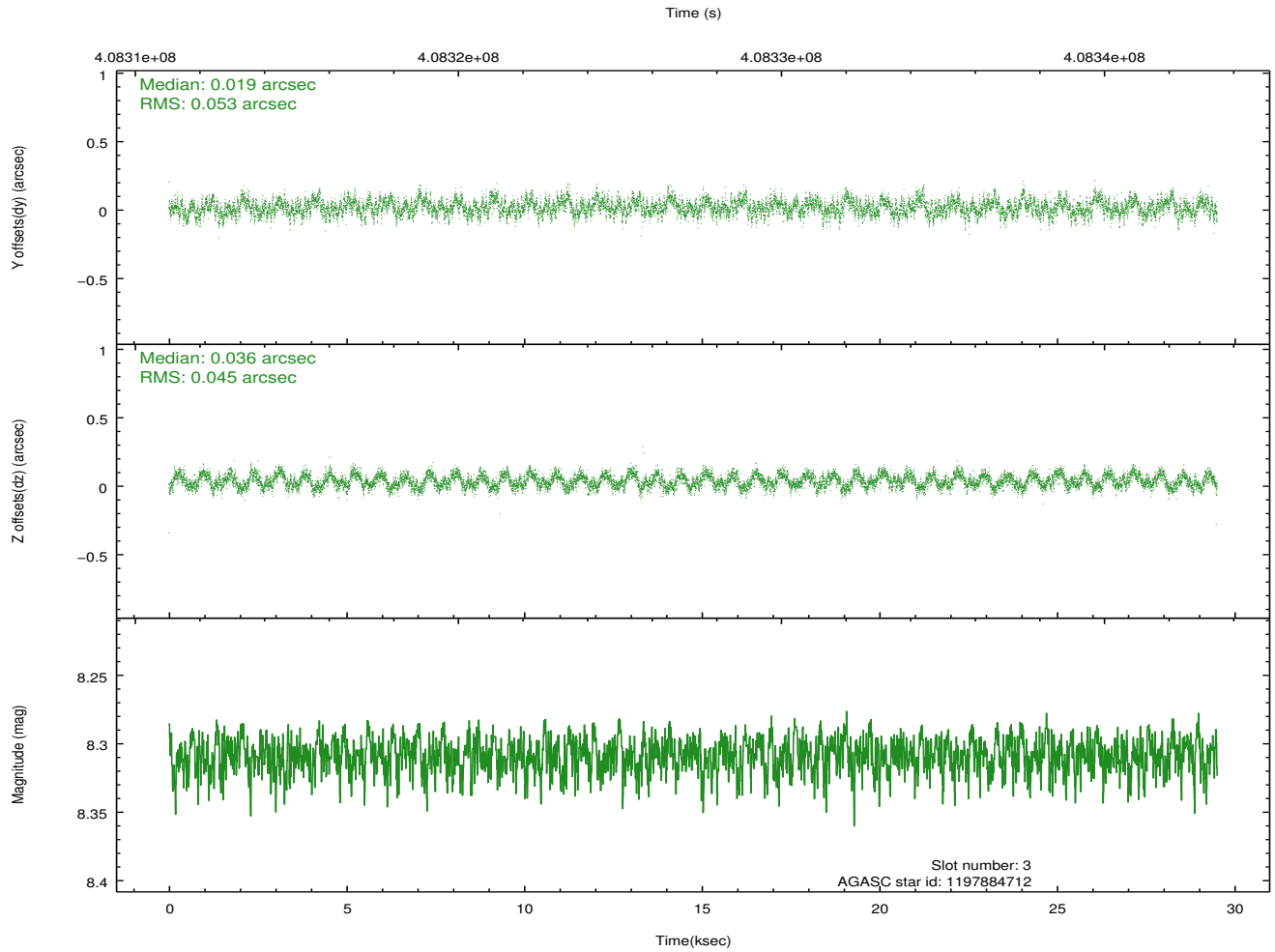
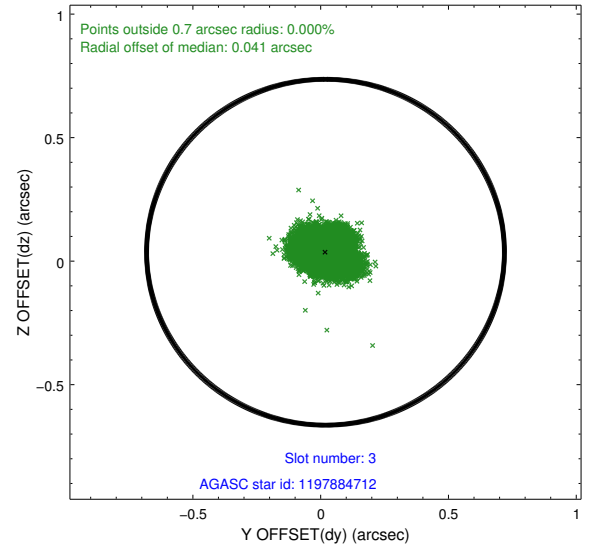
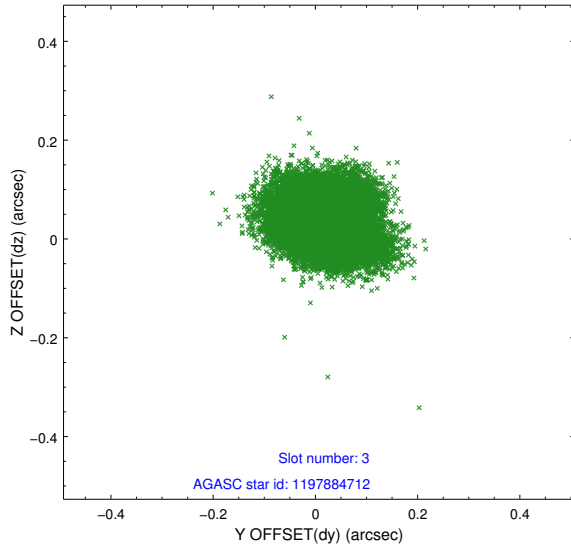


Slot Statistics

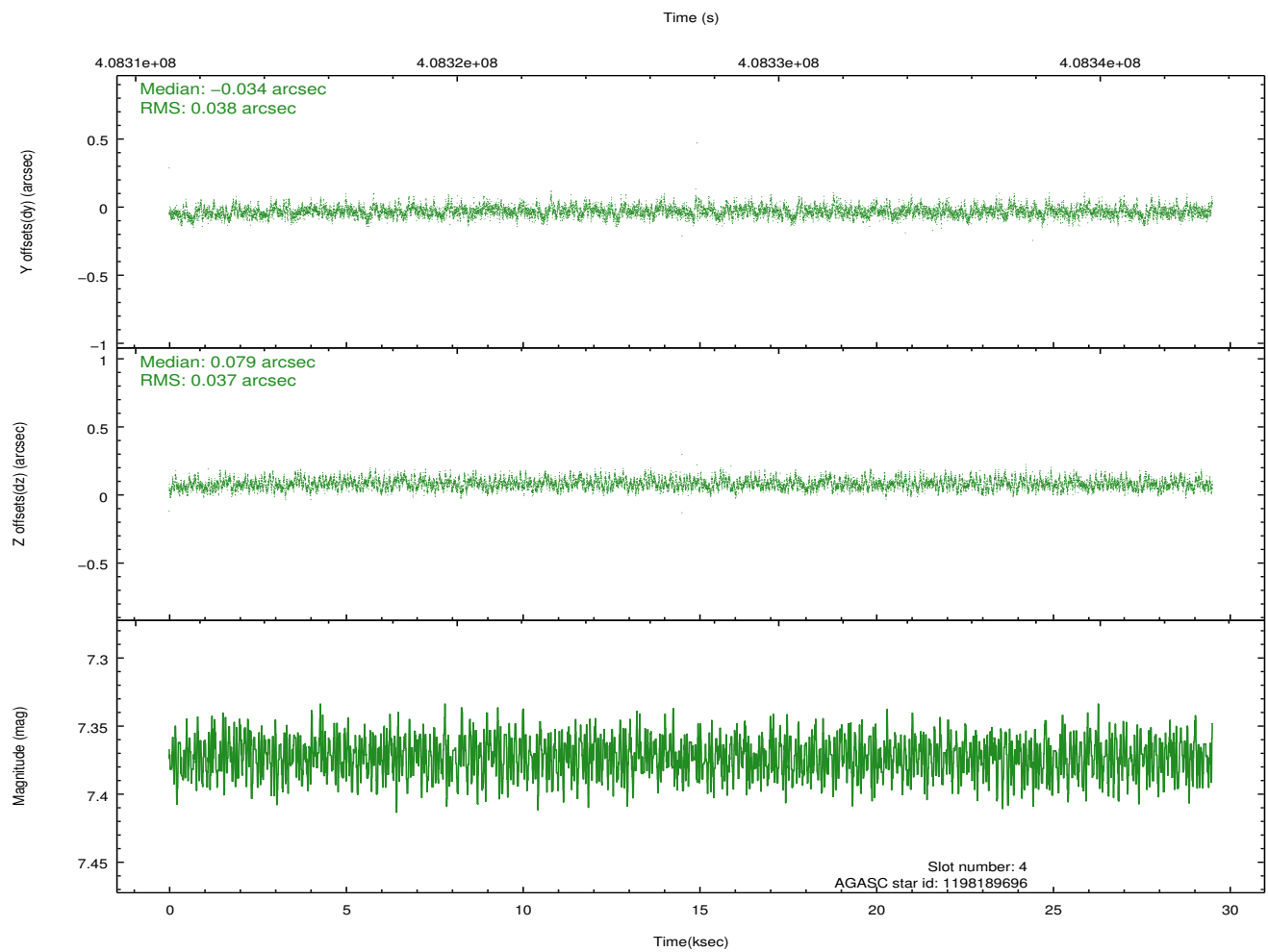
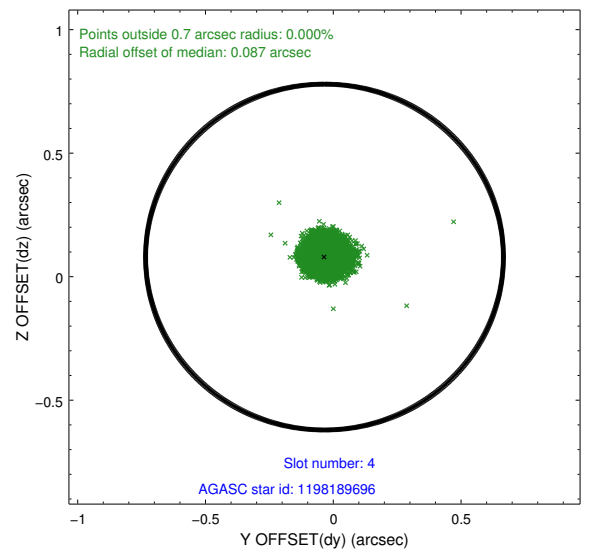
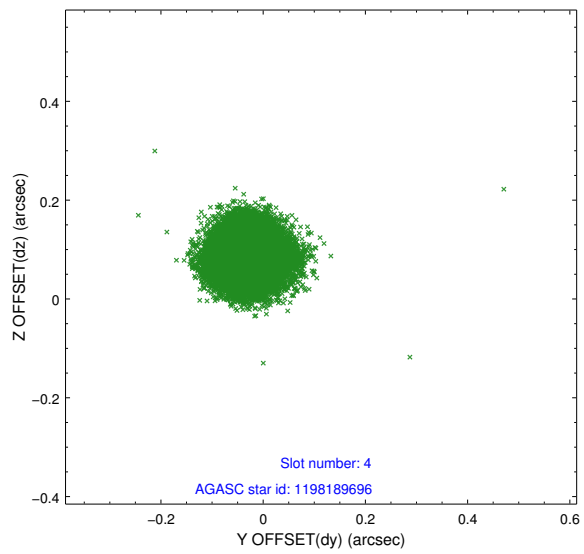
slot	status	id	mag	n_pts	med_dy	med_dz	dr1	dr2	ra	dec	mean_y	mean_z
0	FID	ACIS-S-2	6.92	7198	-0.059	-0.013	0.016	0.025	0.000000	0.000000	-767.16	-1737.48
1	FID	ACIS-S-4	7.01	7198	0.179	0.033	0.008	0.015	0.000000	0.000000	2146.32	170.96
2	FID	ACIS-S-5	7.03	7197	-0.150	-0.010	0.014	0.021	0.000000	0.000000	-1819.99	164.69
3	GUIDE	1197884712	8.31	14393	0.019	0.036	0.074	0.119	16.087398	-72.252690	-1561.68	1051.87
4	GUIDE	1198189696	7.37	14395	-0.034	0.079	0.056	0.089	15.223750	-72.697522	-474.20	-450.65
5	GUIDE	1198282744	8.98	14381	0.076	-0.118	0.085	0.136	17.028326	-73.013356	1348.93	828.19
6	GUIDE	1198283128	7.85	14391	-0.090	-0.091	0.055	0.088	17.272580	-72.642428	251.30	1632.18
7	GUIDE	1198191248	8.37	14384	0.027	0.087	0.066	0.105	15.995132	-73.462457	2371.79	-820.11

2.4 Star Slots

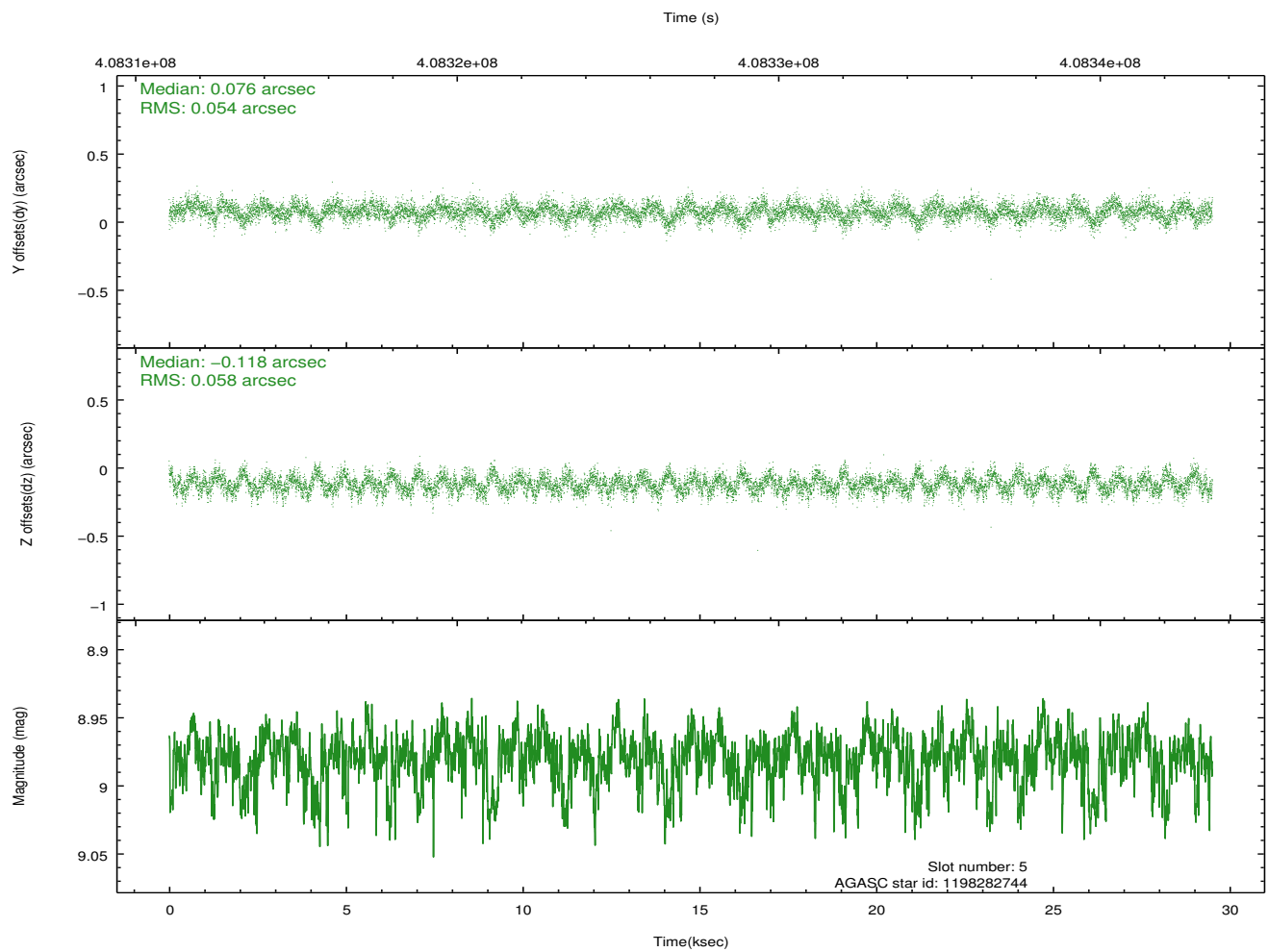
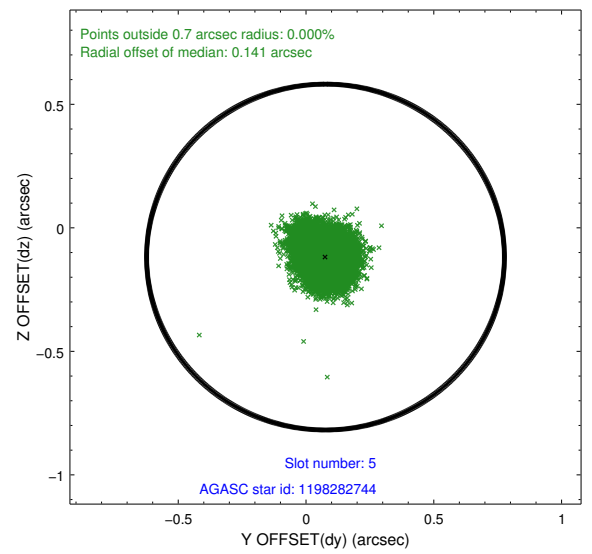
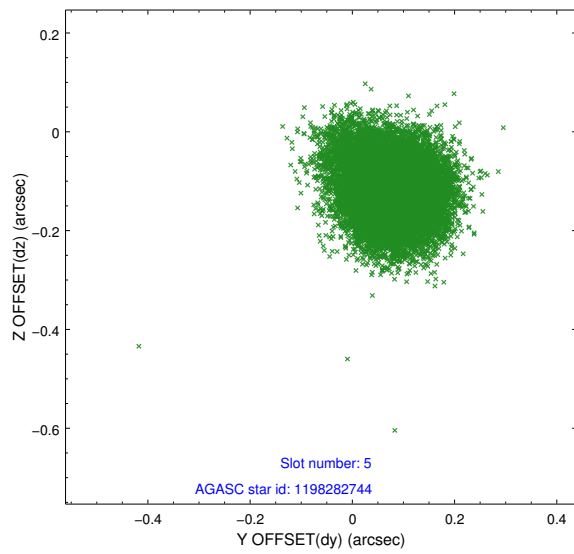
2.4.1 Slot 3



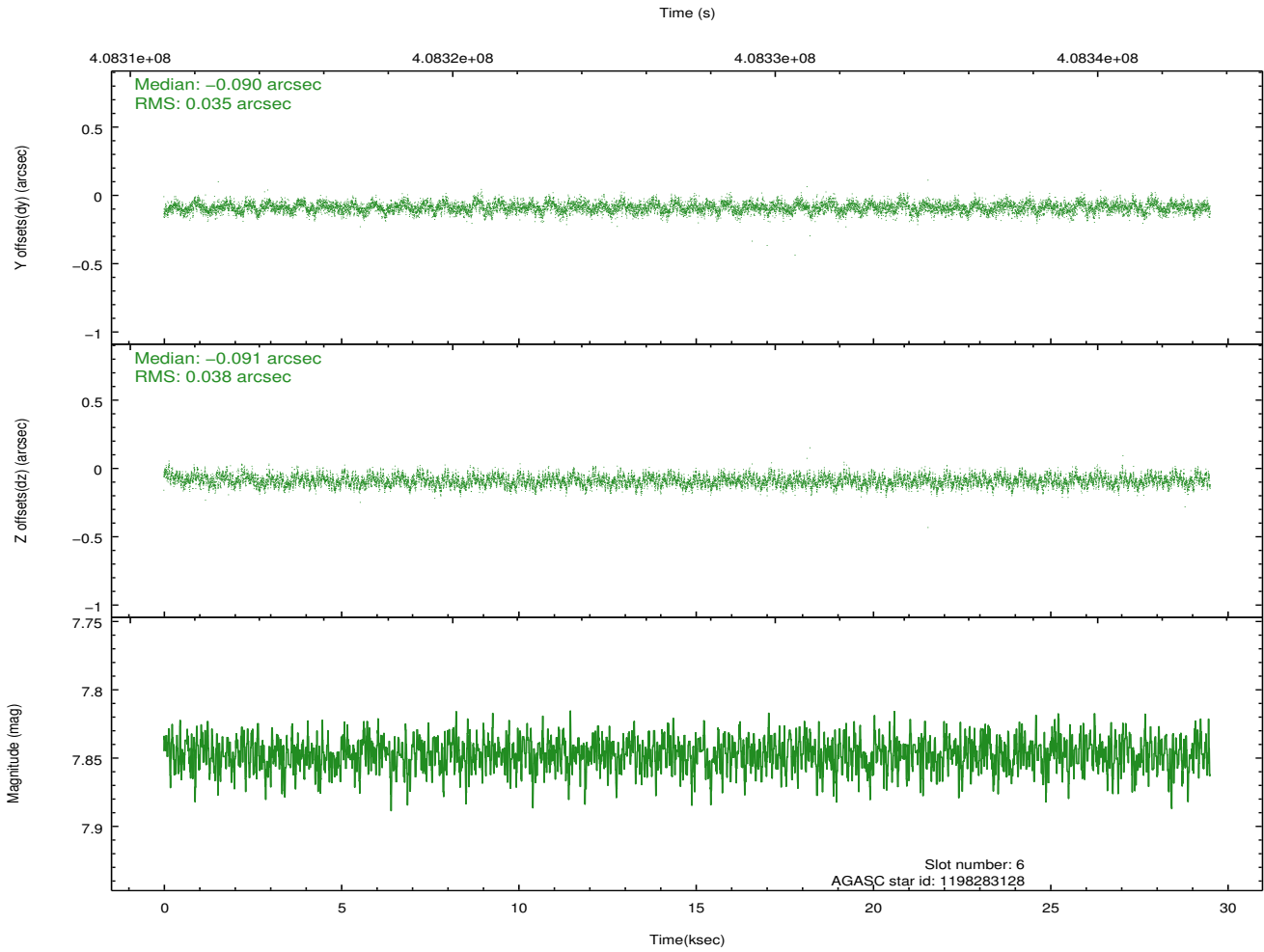
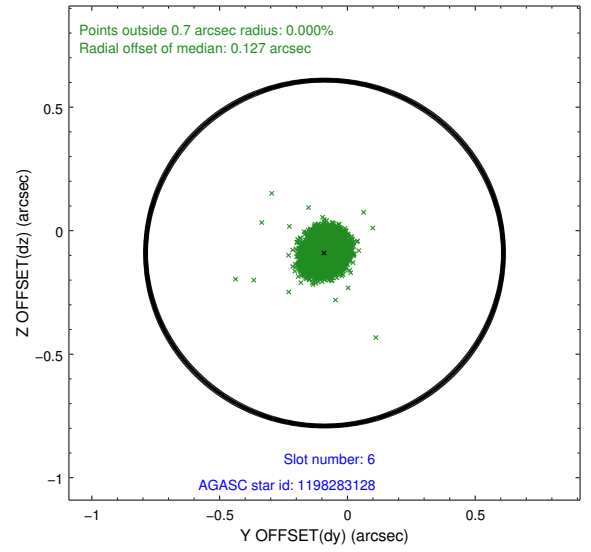
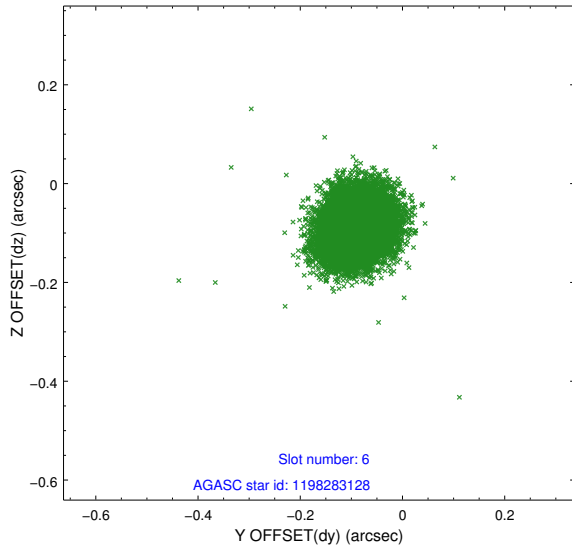
2.4.2 Slot 4



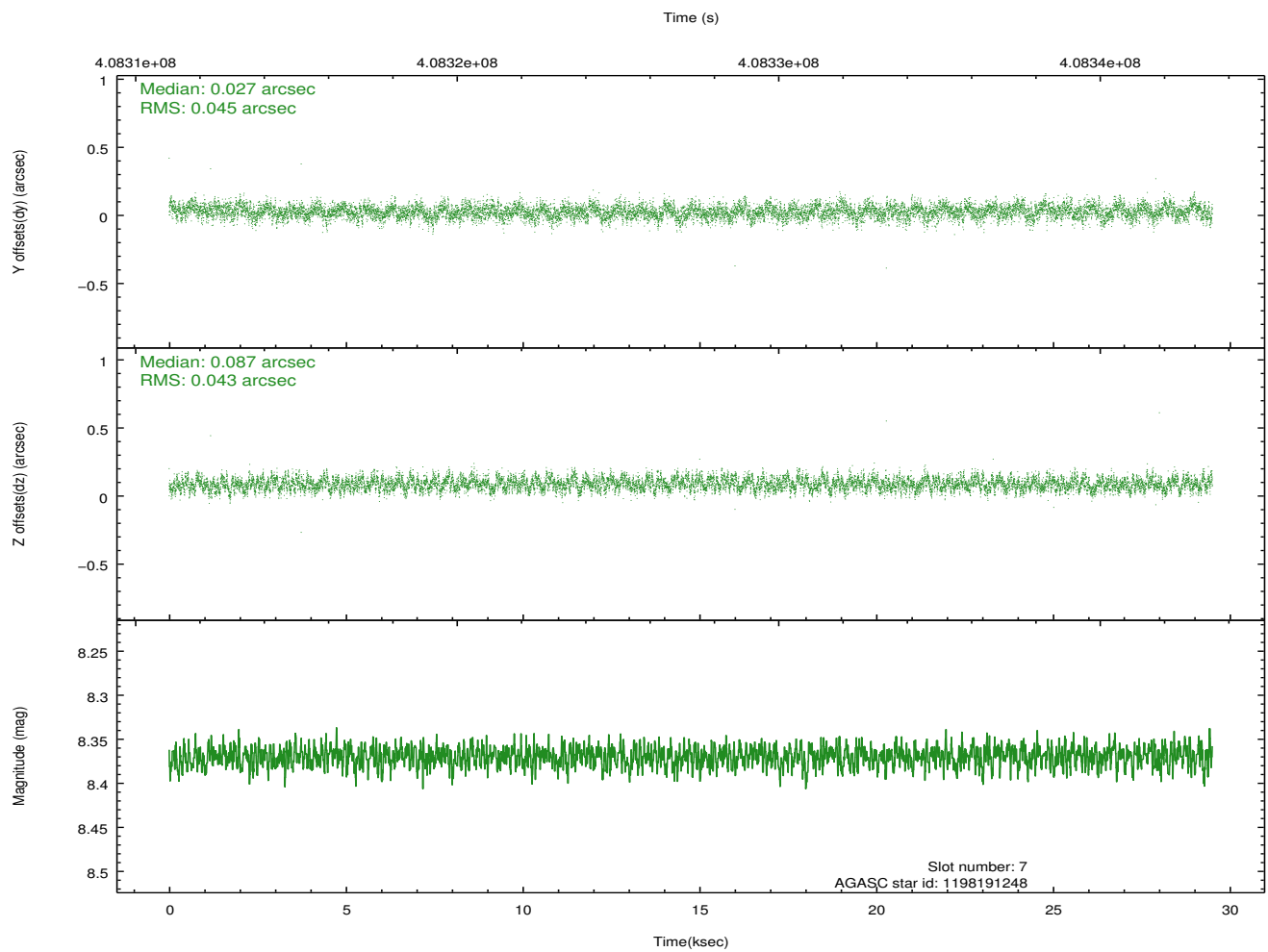
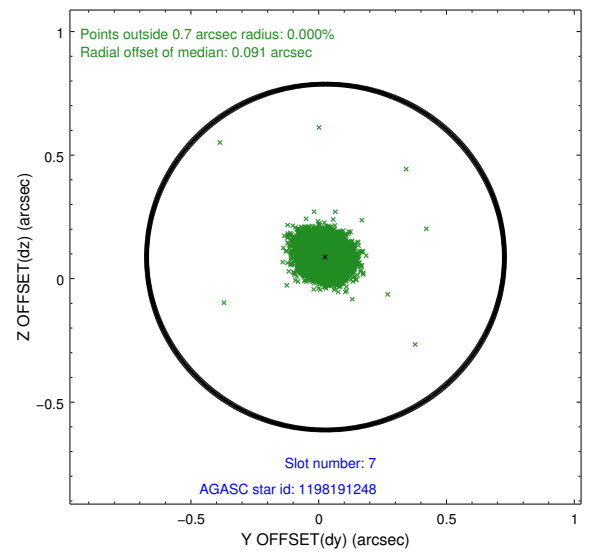
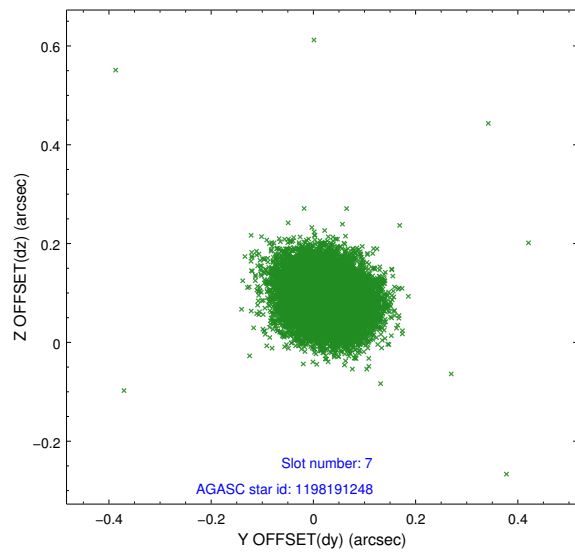
2.4.3 Slot 5



2.4.4 Slot 6

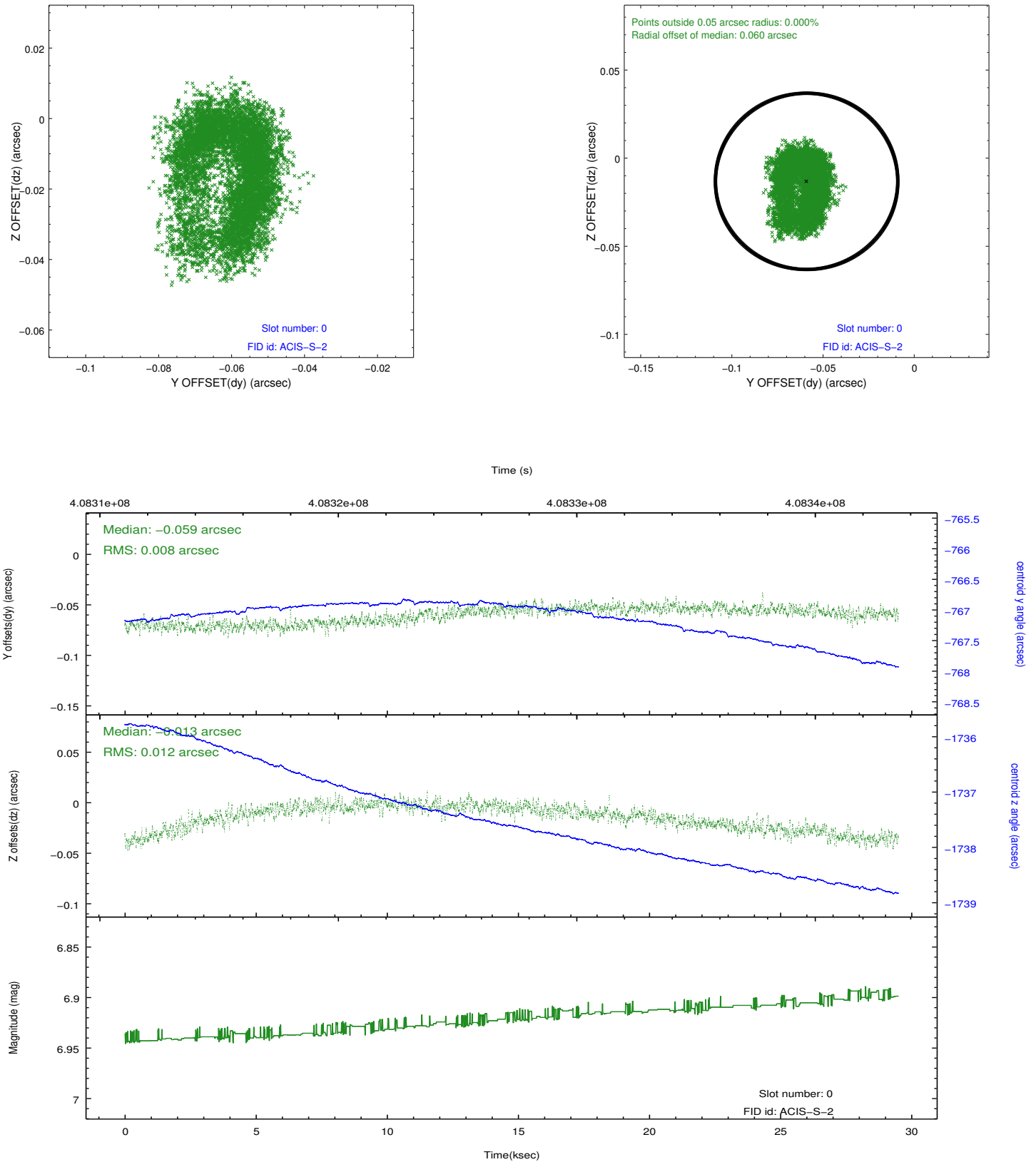


2.4.5 Slot 7

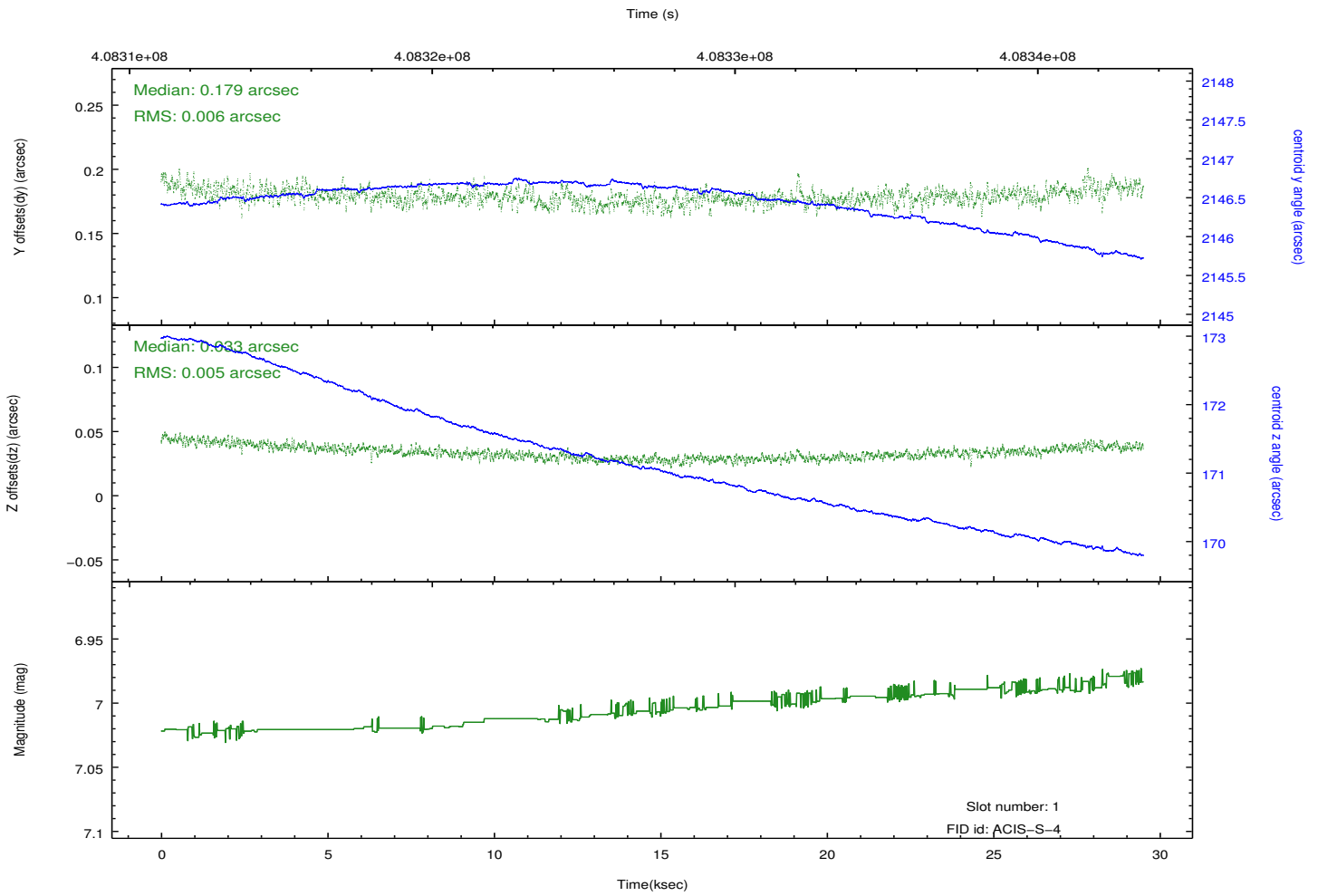
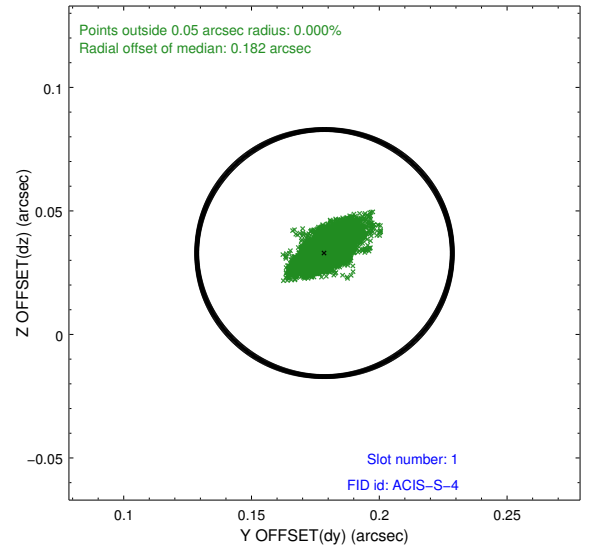
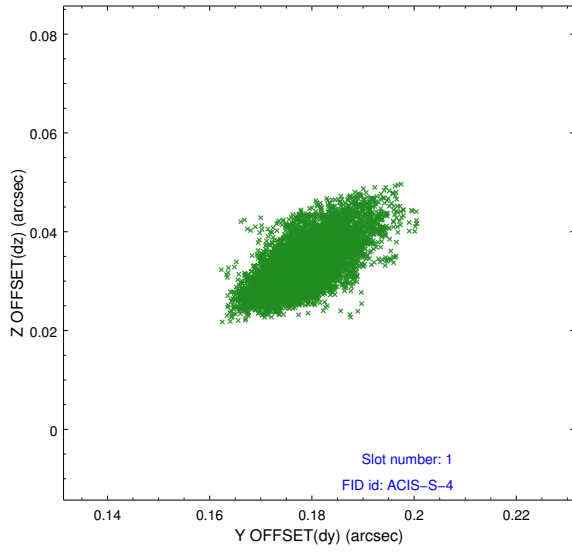


2.5 FID Slots

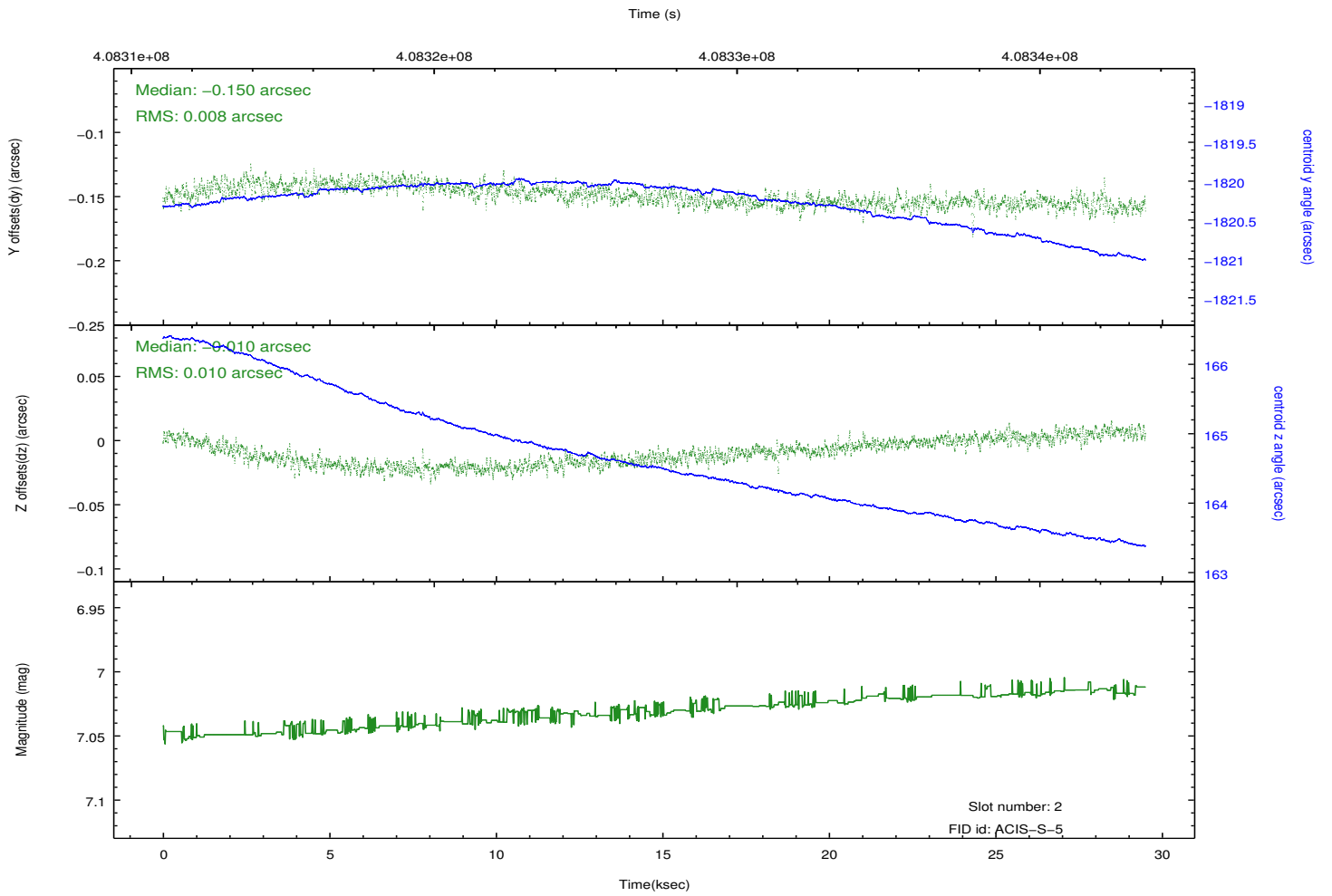
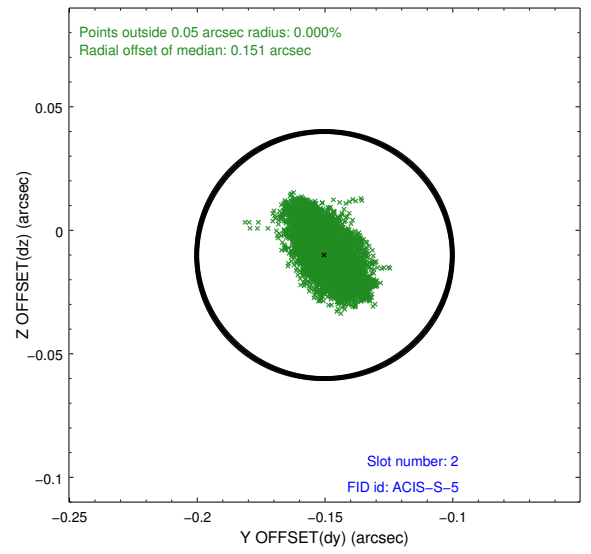
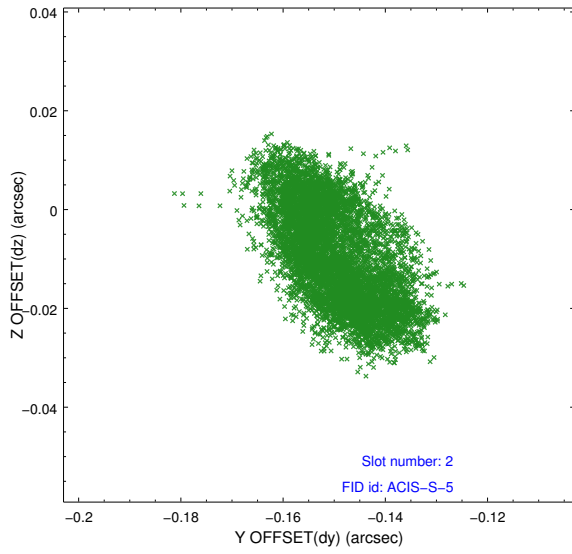
2.5.1 Slot 0



2.5.2 Slot 1



2.5.3 Slot 2



A Summary

A.1 Status

V&V Scientist	Jen Lauer
V&V Date (YYYY-MM-DD)	2012.07.17
V&V Edition	1
V&V Disposition and Status	OK
V&V Charge Time	28.550399893701

A.2 Comments

Target located at approximately ra=01:03:28.9, dec=-72:47:28.2.