

V&V Reference Report

L2 ASCDS Version : 8.4.5

Observation 12191 - L2 Version 2
Chandra X-Ray Center

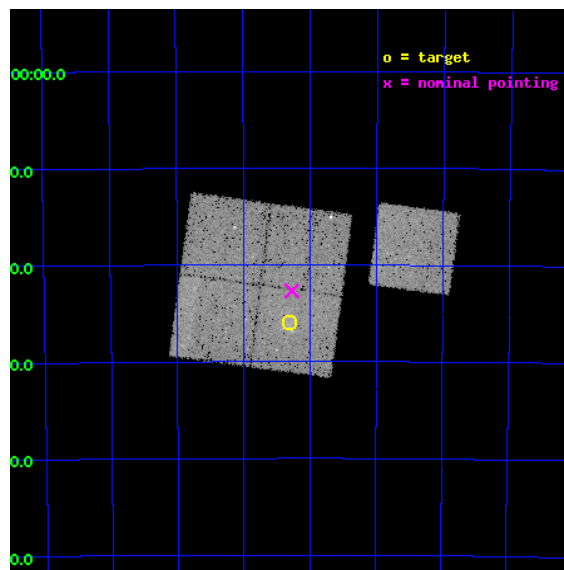
L2 Processing Date : Jul 1 2012

Contents

1	Front	2
2	OBI	3
2.1	OBI	3
2.1.1	Images	3
2.1.2	Bias	3
2.1.3	Parameters	4
2.1.4	Events	4
2.2	Compared Parameters	5
2.3	Aspect	6
2.4	Star Slots	9
2.4.1	Slot 3	9
2.4.2	Slot 4	10
2.4.3	Slot 5	11
2.4.4	Slot 6	12
2.4.5	Slot 7	13
2.5	FID Slots	14
2.5.1	Slot 0	14
2.5.2	Slot 1	15
2.5.3	Slot 2	16
A	Summary	17
A.1	Status	17
A.2	Comments	17

1 Front

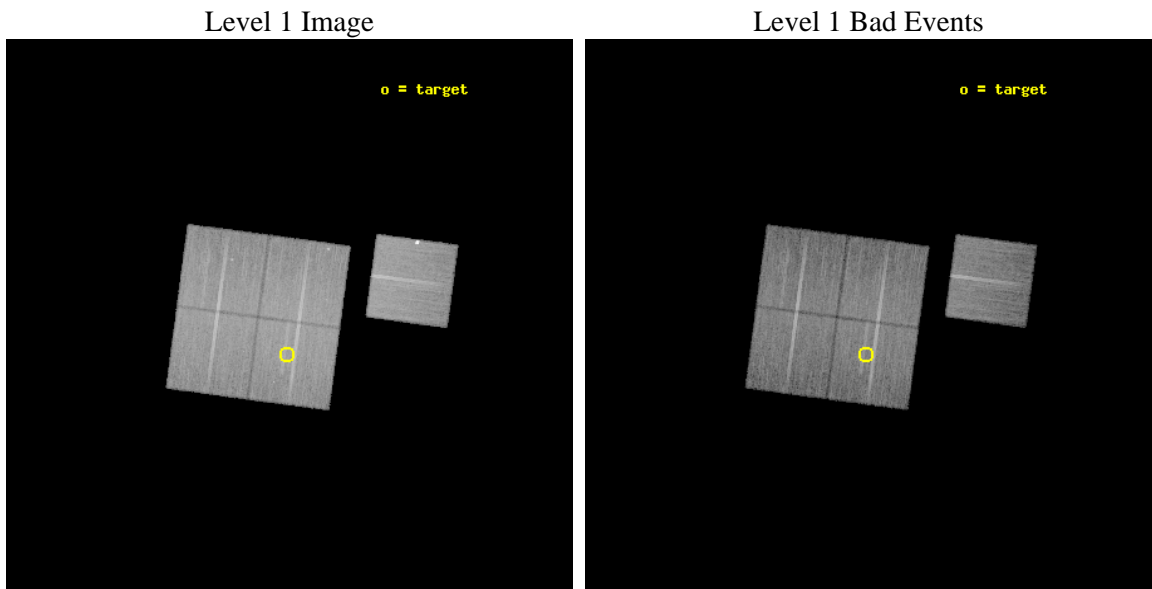
seq_num	800957	Sequence number
obs_id	12191	Observation id
title	Chandra Observations of SZ-selected Galaxy Clusters detected by the South Pole Telescope	Proposal title
observer	Professor Gordon Garmire	Principal investigator
object	SPT-CLJ0307-6225	Source name
dtcycle	0	
cycle	P	events from which exps? Prim/Second/Both
ra_targ	46.829583	Observer's specified target RA [deg]
dec_targ	-62.432306	Observer's specified target Dec [deg]
ra_nom	46.81825677303	Nominal RA [deg]
dec_nom	-62.378151437304	Nominal Dec [deg]
roll_nom	97.585875138638	Nominal Roll [deg]
revision	2	Processing version of data
ontime	25046.921231031	Sum of GTIs [s]
livetime	24719.664765873	Livetime [s]
ontime0	25043.657100916	Sum of GTIs [s]
ontime1	25046.839121222	Sum of GTIs [s]
ontime2	25050.021161437	Sum of GTIs [s]
ontime3	25046.921231031	Sum of GTIs [s]
ontime6	25043.61618036	Sum of GTIs [s]
l2events	86179	Number of level 2 events



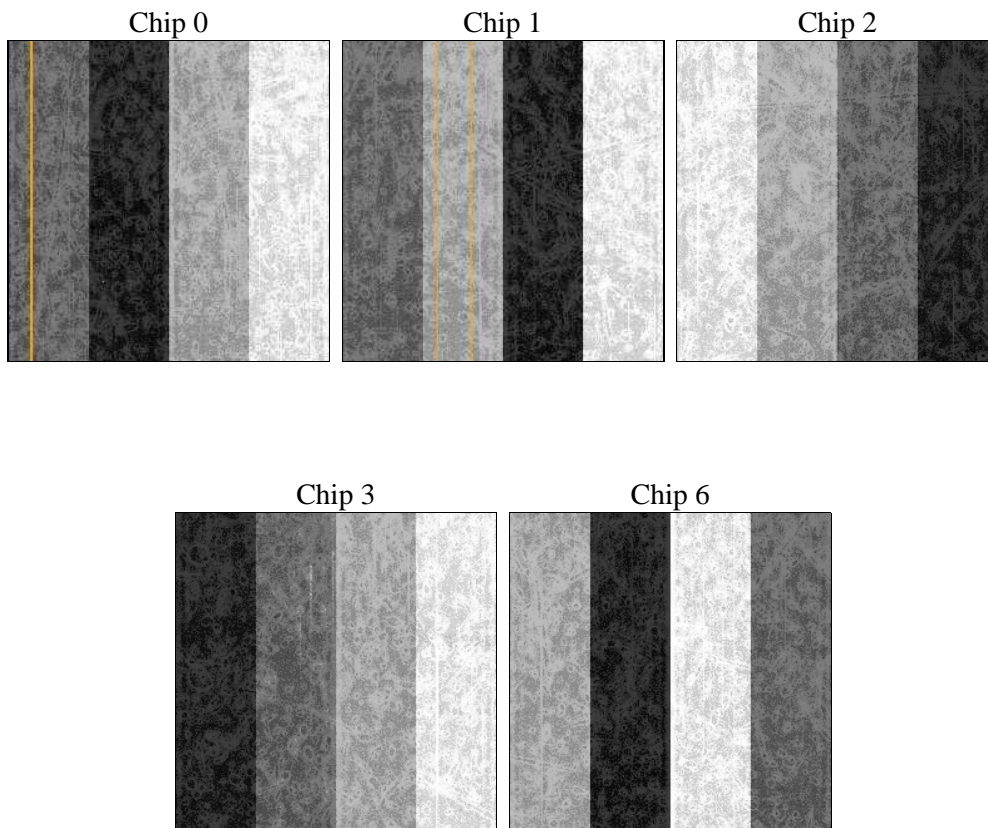
2 OBI

2.1 OBI

2.1.1 Images



2.1.2 Bias



2.1.3 Parameters

obi_num	0	Obi number	sched_exp_time	25000.000000	[s] Scheduled observation exposure time
ascdsver	8.4.5	Processing system revision	ontime	25046.921231031	Sum of GTIs [s]
caldbver	4.5.0	 	ontime0	25043.657100916	Sum of GTIs [s]
date	2012-07-01T04:05:47	Date and time of file creation	ontime1	25046.839121222	Sum of GTIs [s]
revision	2	Processing version of data	ontime2	25050.021161437	Sum of GTIs [s]
			ontime3	25046.921231031	Sum of GTIs [s]
			ontime6	25043.61618036	Sum of GTIs [s]
			l1events	897776	Number of level 1 events

2.1.4 Events

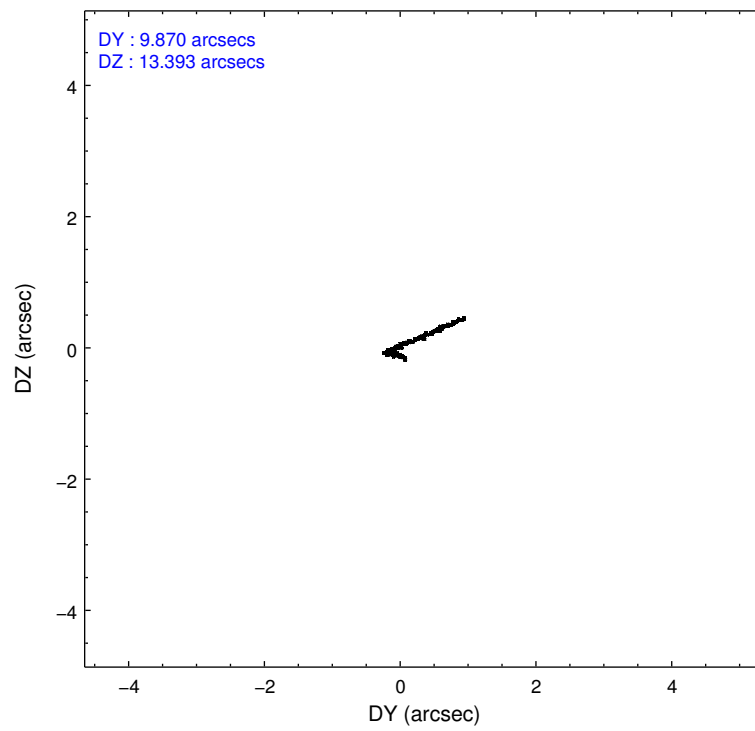
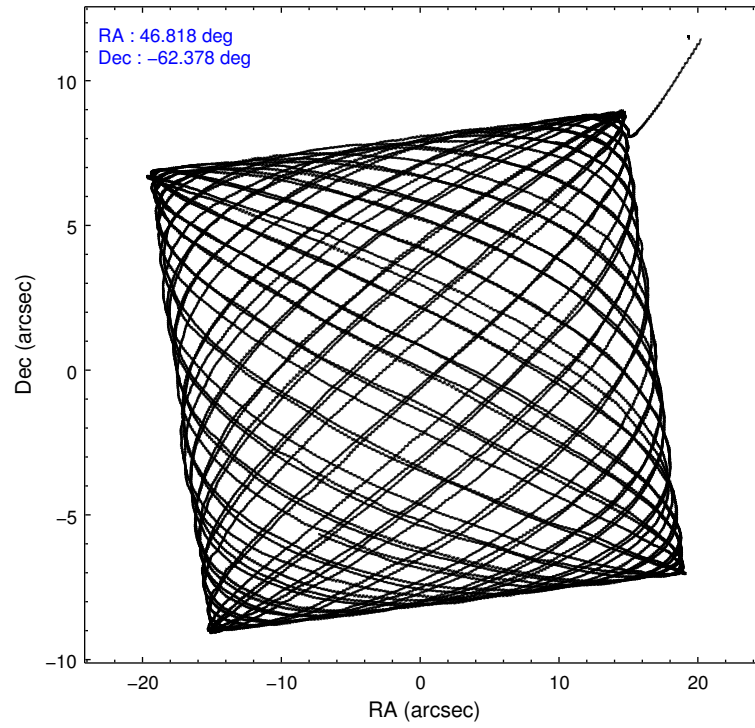
	ccd 0	ccd 1	ccd 2	ccd 3	ccd 6
level 1 events	170491	169913	183734	183102	190536
rejected events	150365	147613	163711	162874	163091
rejected %	88%	86%	89%	88%	85%

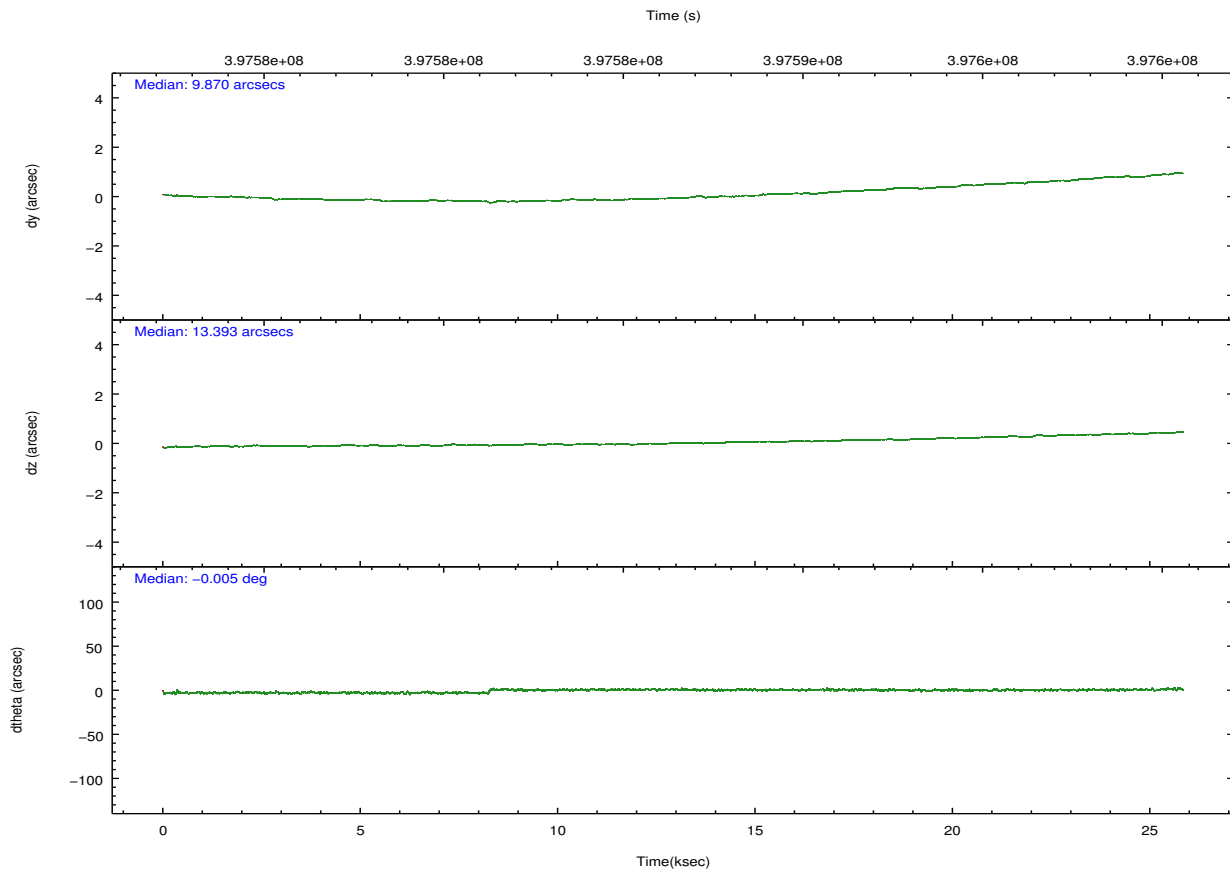
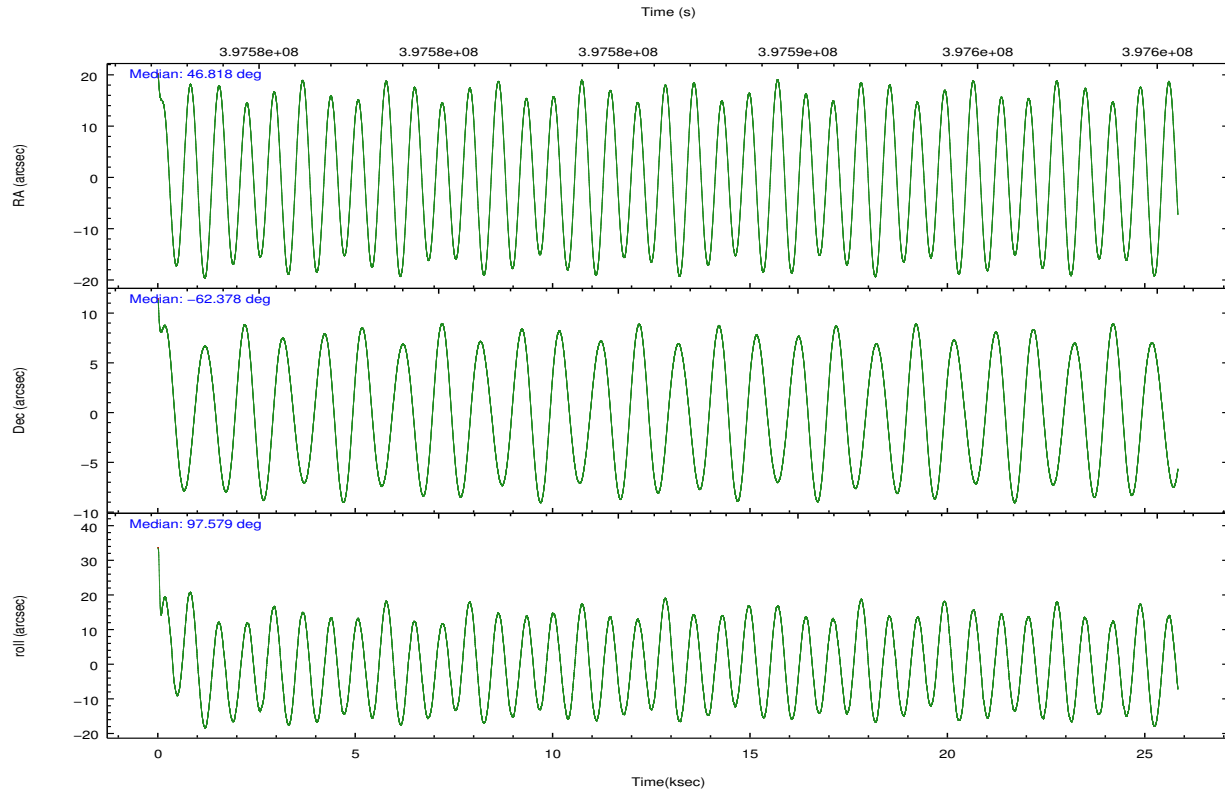
	ccd 0	ccd 1	ccd 2	ccd 3	ccd 6
grade 0 events	7030	7955	7394	7721	14342
	4%	4%	4%	4%	7%
grade 1 events	98	120	120	108	126
	0%	0%	0%	0%	0%
grade 2 events	5065	5273	4898	4349	4438
	2%	3%	2%	2%	2%
grade 3 events	2211	2270	2042	2049	2152
	1%	1%	1%	1%	1%
grade 4 events	1985	2280	2009	2146	2130
	1%	1%	1%	1%	1%
grade 5 events	7278	7960	6962	8354	7988
	4%	4%	3%	4%	4%
grade 6 events	3844	4527	3684	3966	4390
	2%	2%	2%	2%	2%
grade 7 events	142980	139528	156625	154409	154970
	83%	82%	85%	84%	81%

2.2 Compared Parameters

Parameter	Planned	Actual	Parameter	Planned	Actual
Instrument	ACIS	ACIS	Obspar format version number	7	7
Detector	ACIS-01236	ACIS-01236	Obspar file type	PREDICTED	ACTUAL
Grating	NONE	NONE	Obspar update status	NONE	UPDATED
Data mode	VFAINT	VFAINT	CCD I0 on	Y	Y
Observation mode	POINTING	POINTING	CCD I1 on	Y	Y
[deg] Pointing RA	46.854602	46.81825677303004	CCD I2 on	Y	Y
[deg] Pointing Dec	-62.399875	-62.37815143730391	CCD I3 on	Y	Y
[deg] Pointing Roll	97.409394	97.5858751386382	CCD S0 on	N	N
[mm] SIM focus pos	-0.782348	-0.7809083437167272	CCD S1 on	N	N
[mm] SIM defocus	0	0.001439871863259334	CCD S2 on	O1	Y
[mm] SIM translation stage pos	-225.842463	-225.8433433320239	CCD S3 on	N	N
[mm] SIM translation stage offset	-7.75	-7.749109670905796	CCD S4 on	N	N
[s] Observation start time (MET)	397574312.184000	397572739.50935	CCD S5 on	N	N
Observation start date	2010-08-07T13:17:26	2010-08-07T12:52:19	Number of optional ACIS chips dropped	0	0
[s] Observation end time (MET)	397599312.184000	397599931.22324	On-chip summing requested	N	N
Observation end date	2010-08-07T20:14:06	2010-08-07T20:25:31	Subarray requested	NONE	NONE
Read mode	TIMED	TIMED	Alternating exposures requested	N	N
			[s] Primary exposure time	0.000000	3.1

2.3 Aspect



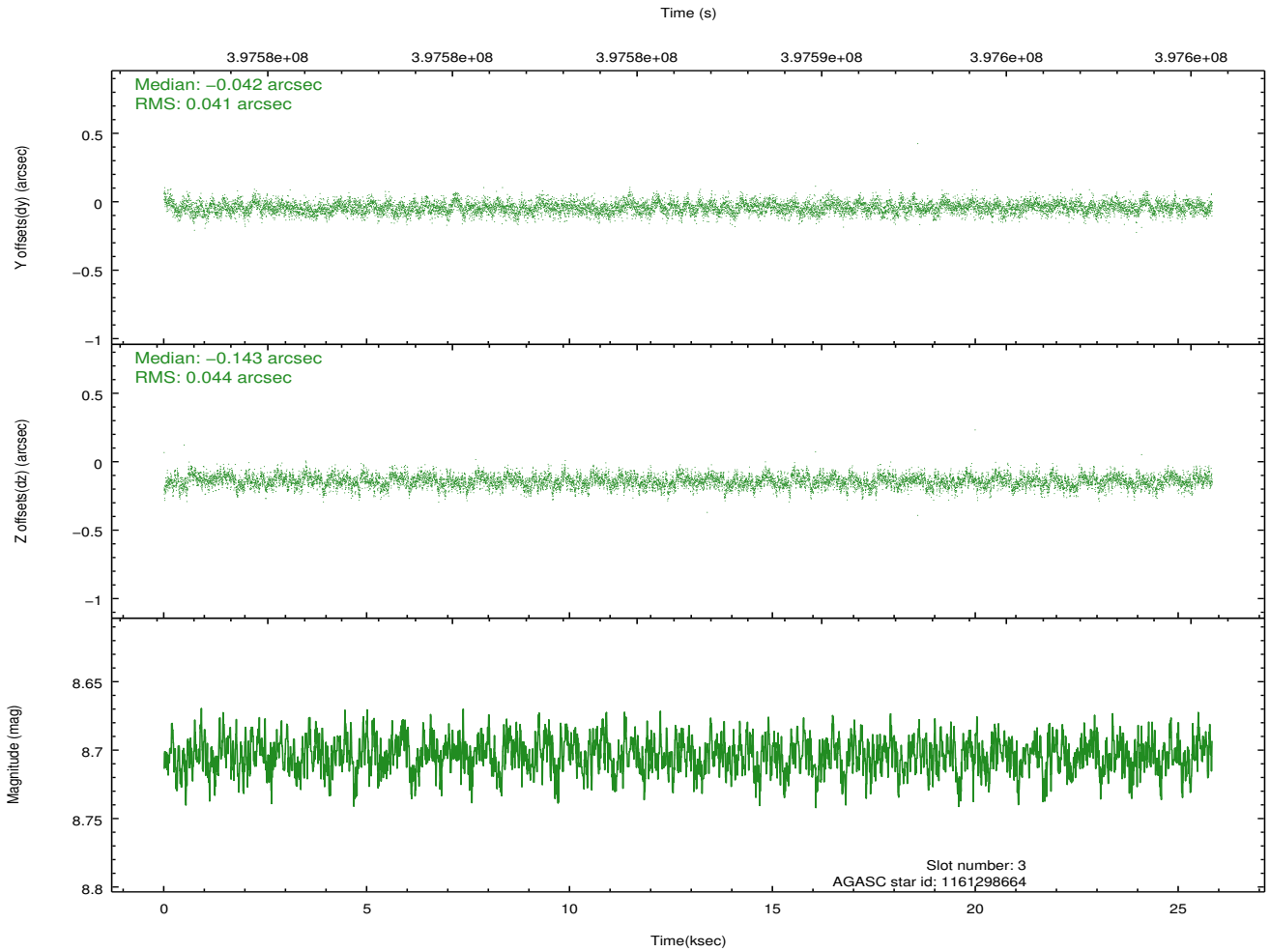
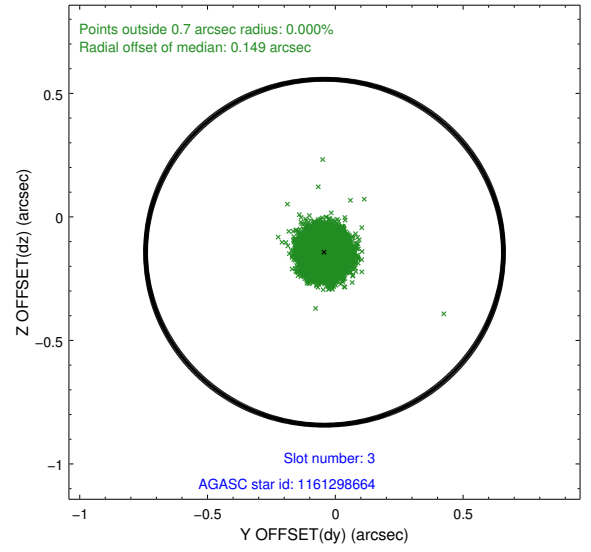
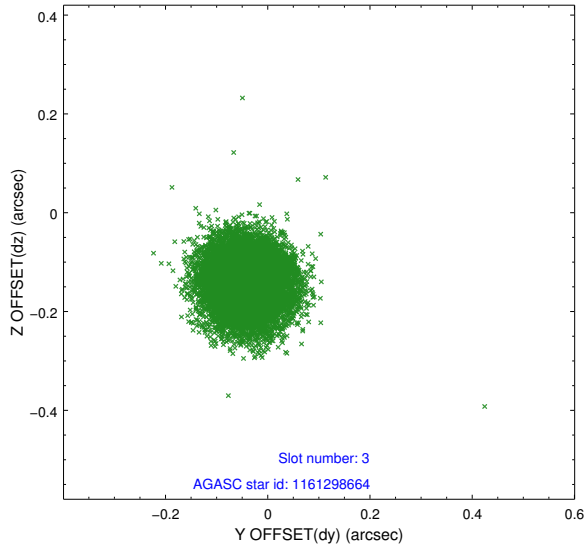


Slot Statistics

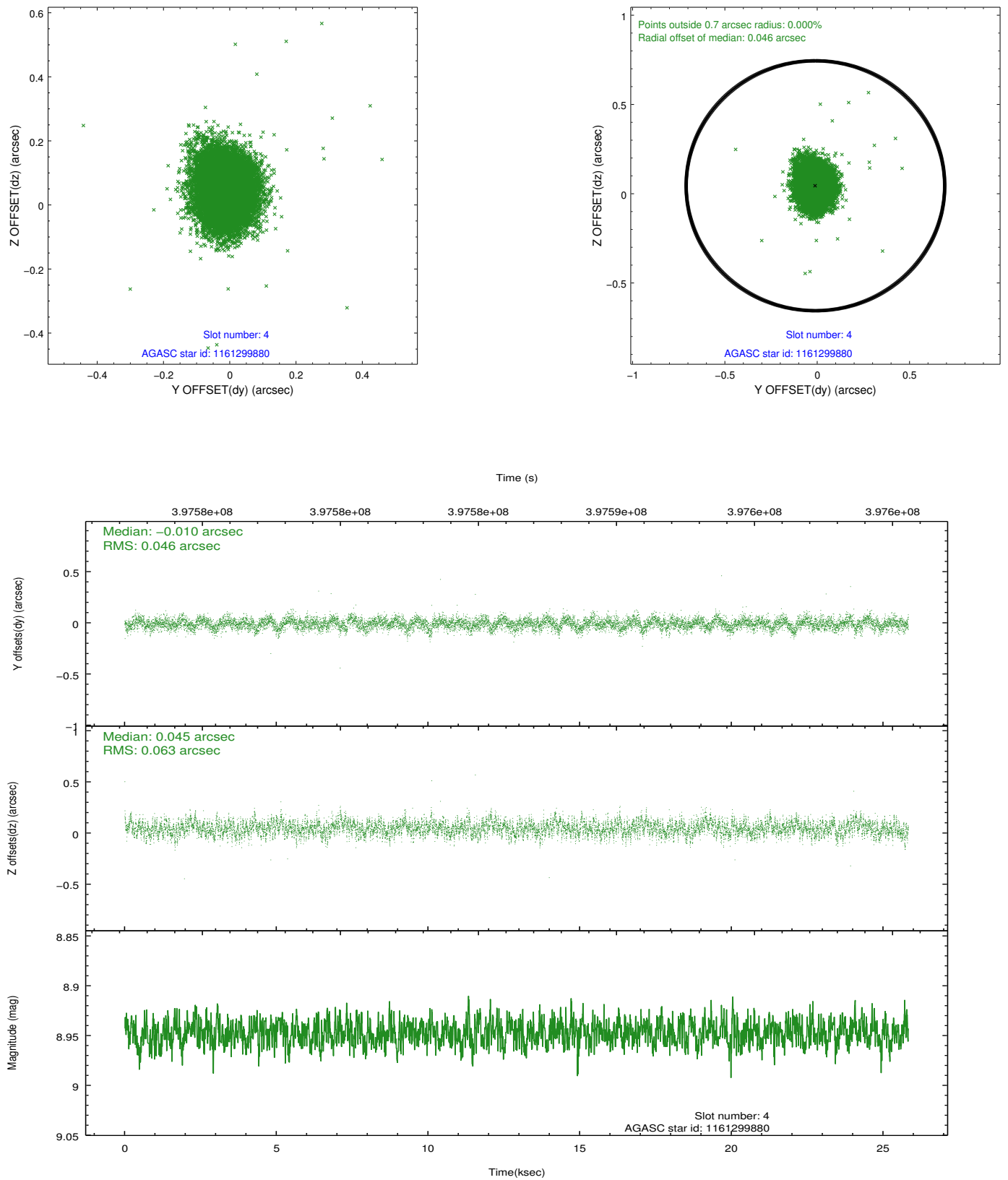
slot	status	id	mag	n_pts	med_dy	med_dz	dr1	dr2	ra	dec	mean_y	mean_z
0	FID	ACIS-I-1	7.03	6301	-0.030	-0.065	0.021	0.034	0.000000	0.000000	929.47	-996.12
1	FID	ACIS-I-4	6.95	6301	-0.075	0.063	0.029	0.043	0.000000	0.000000	2149.00	904.78
2	FID	ACIS-I-6	7.05	6300	0.007	0.067	0.023	0.036	0.000000	0.000000	395.43	1546.03
3	GUIDE	1161298664	8.70	12596	-0.042	-0.143	0.064	0.104	46.435533	-62.066031	1280.70	546.17
4	GUIDE	1161299880	8.95	12591	-0.010	0.045	0.081	0.134	48.061007	-62.287538	122.51	-2052.21
5	GUIDE	1161300568	9.23	12595	0.050	-0.105	0.096	0.158	46.385264	-61.984333	1583.53	594.33
6	GUIDE	1161300888	8.67	12592	0.007	0.052	0.086	0.133	46.853675	-62.183951	771.30	-98.13
7	GUIDE	1161302288	8.83	12578	-0.000	0.150	0.084	0.142	47.112121	-61.772578	2182.55	-725.64

2.4 Star Slots

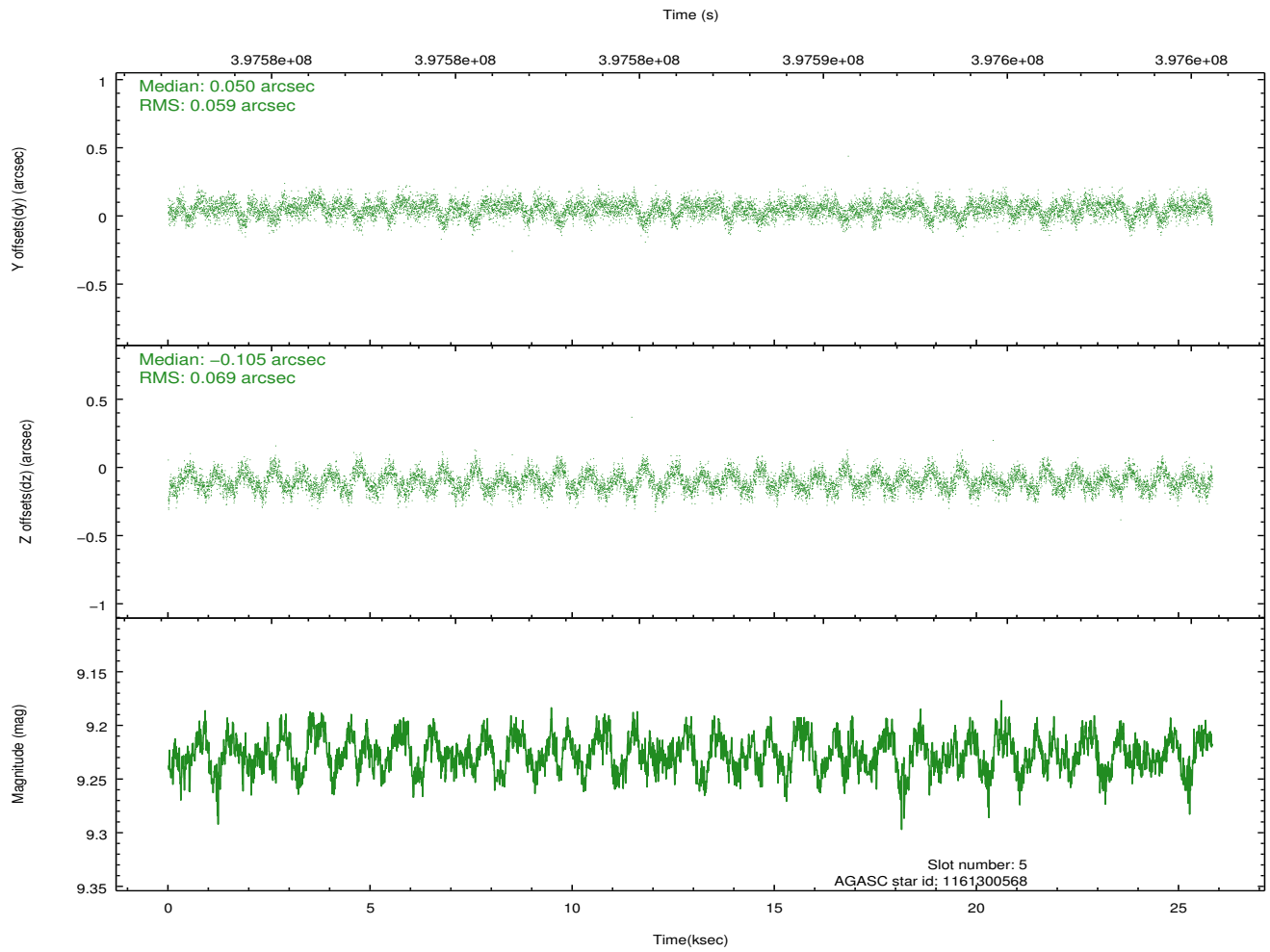
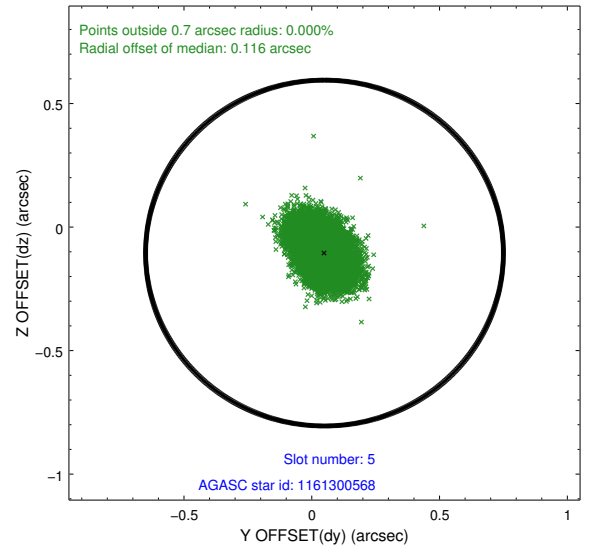
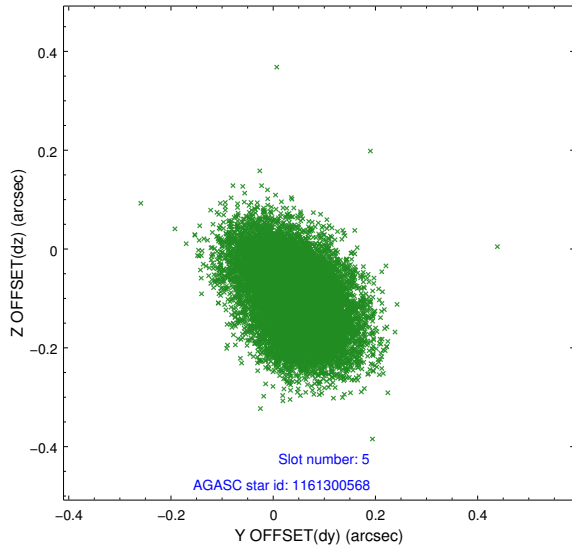
2.4.1 Slot 3



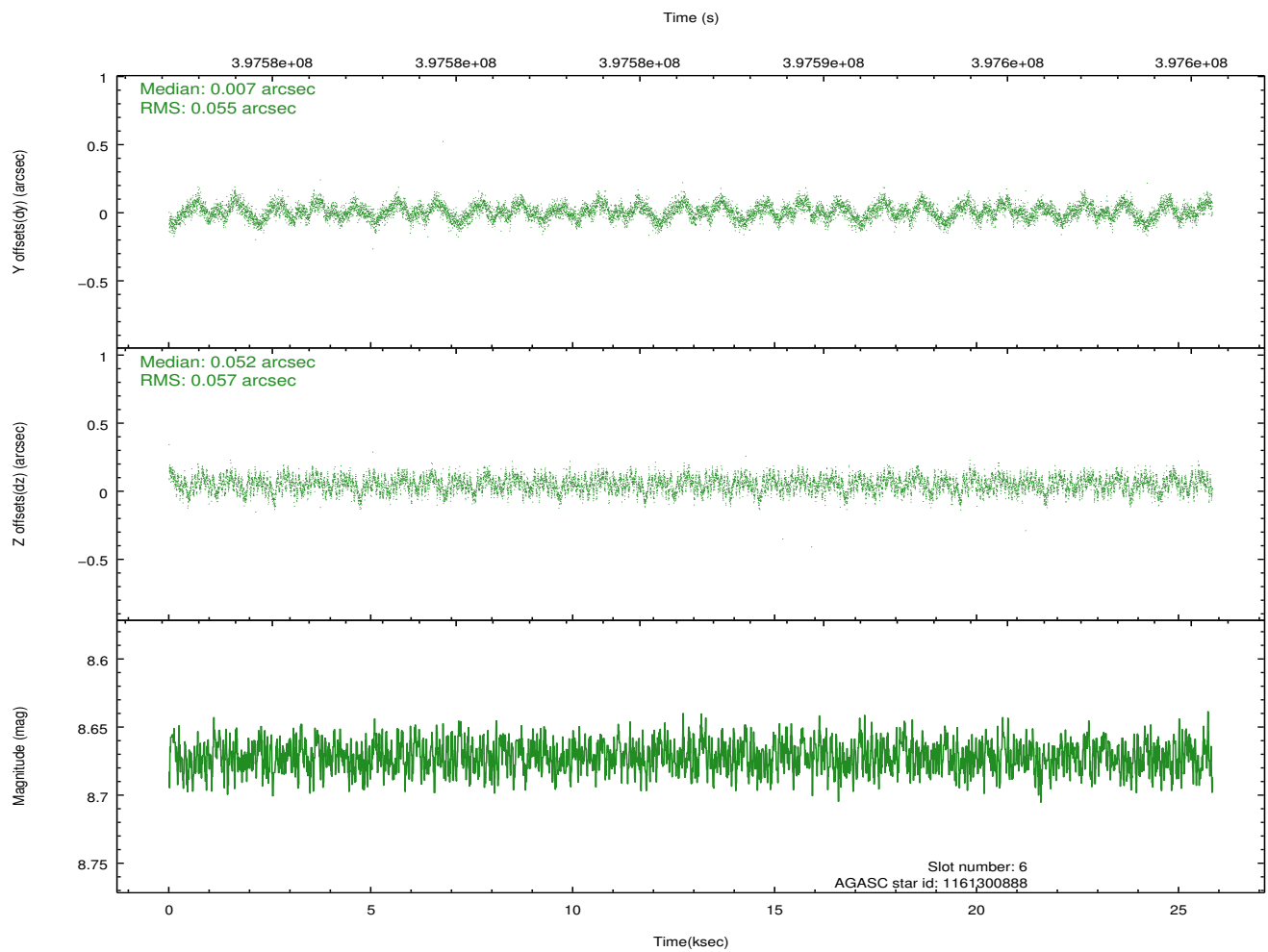
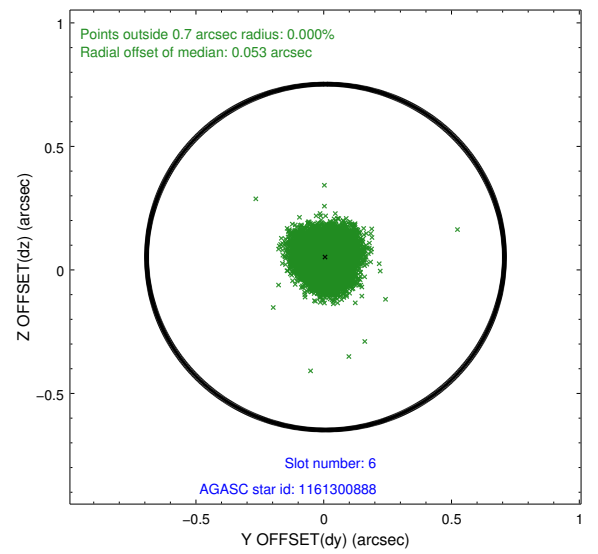
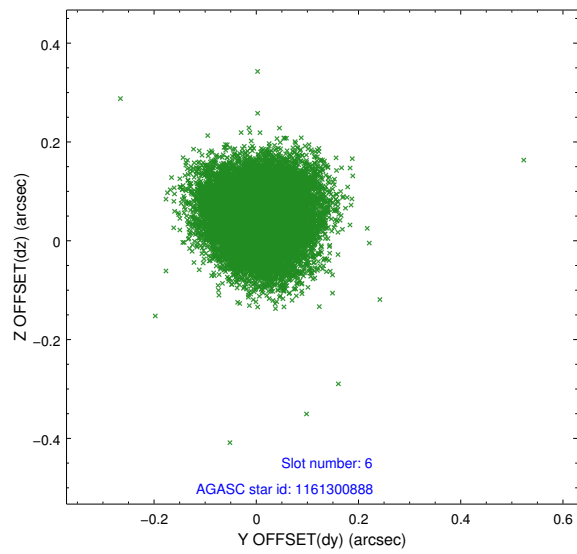
2.4.2 Slot 4



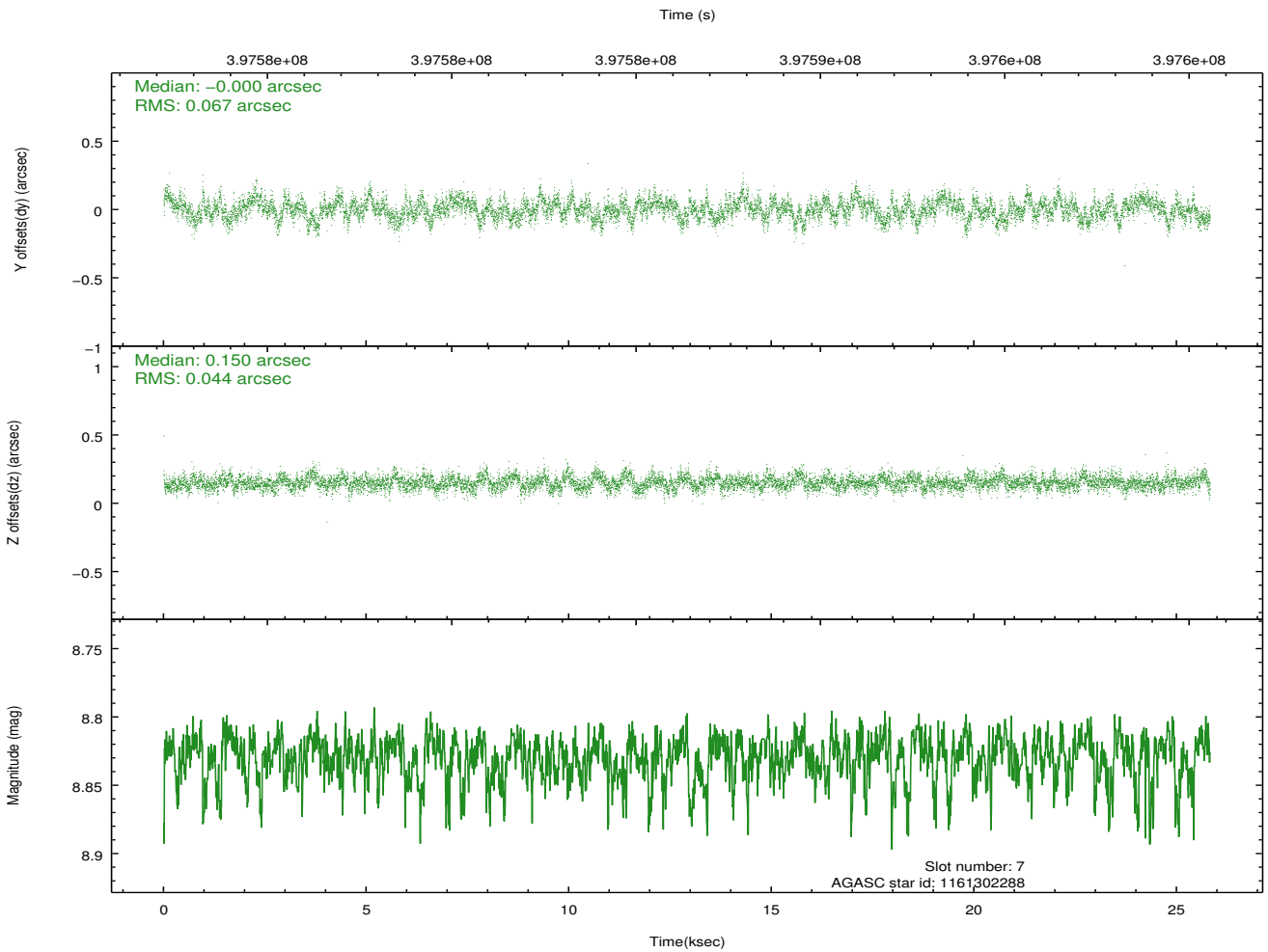
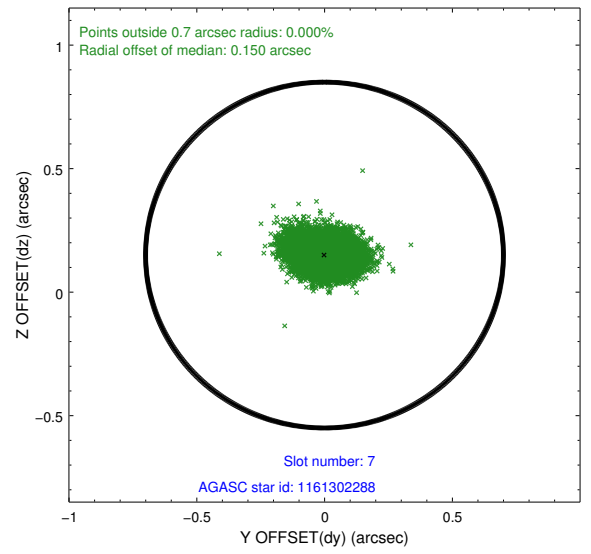
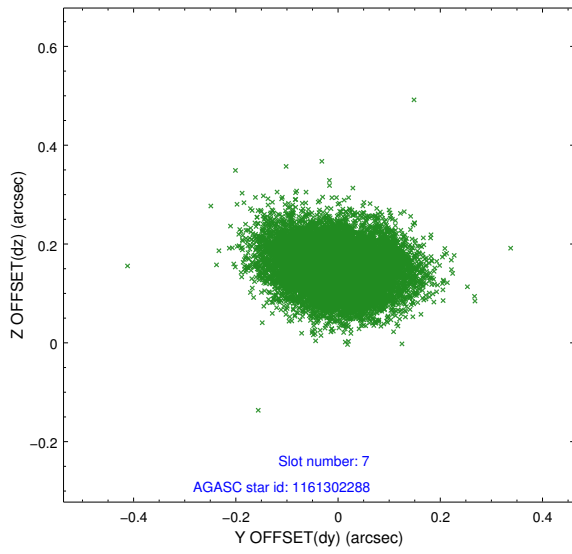
2.4.3 Slot 5



2.4.4 Slot 6

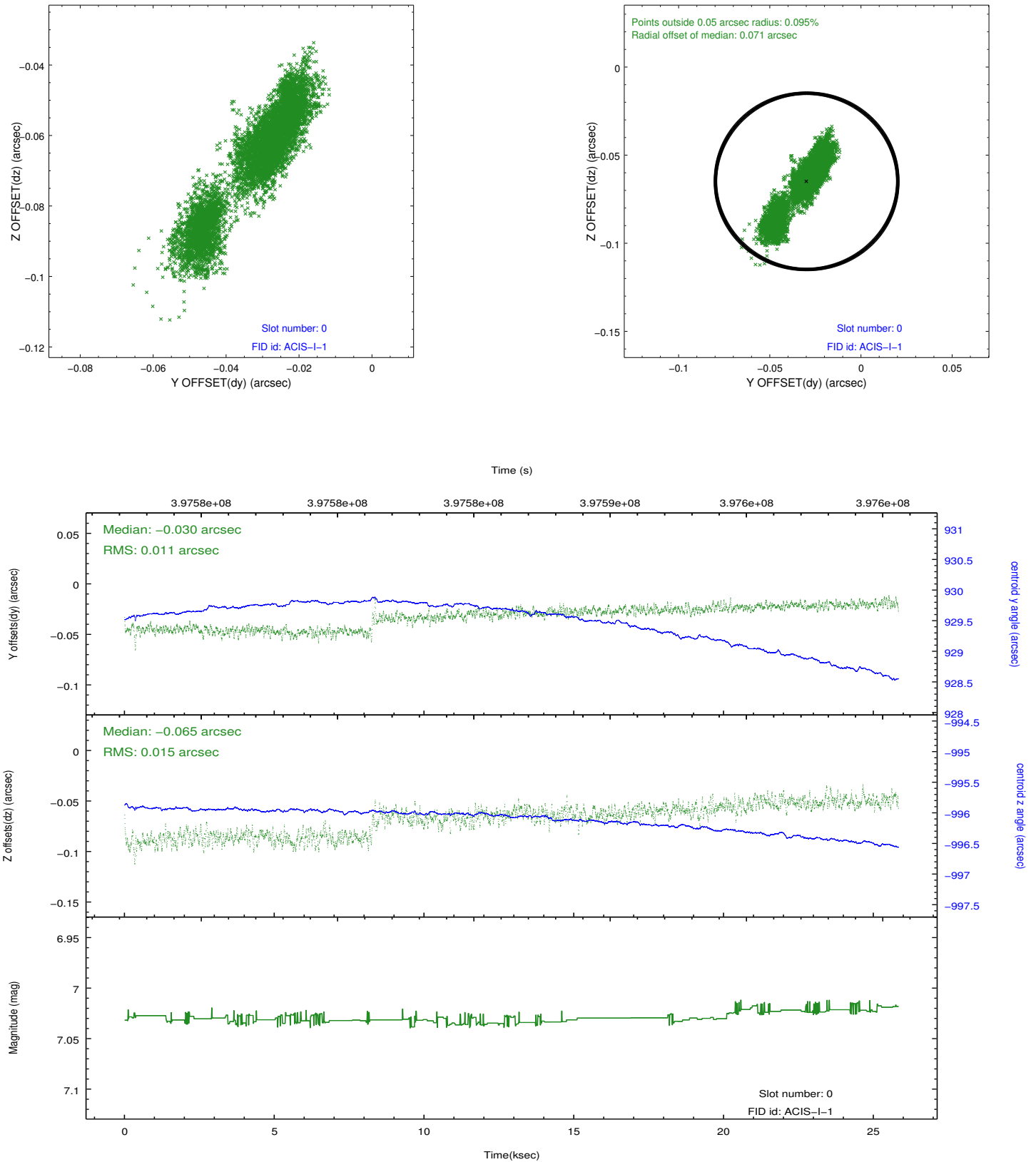


2.4.5 Slot 7

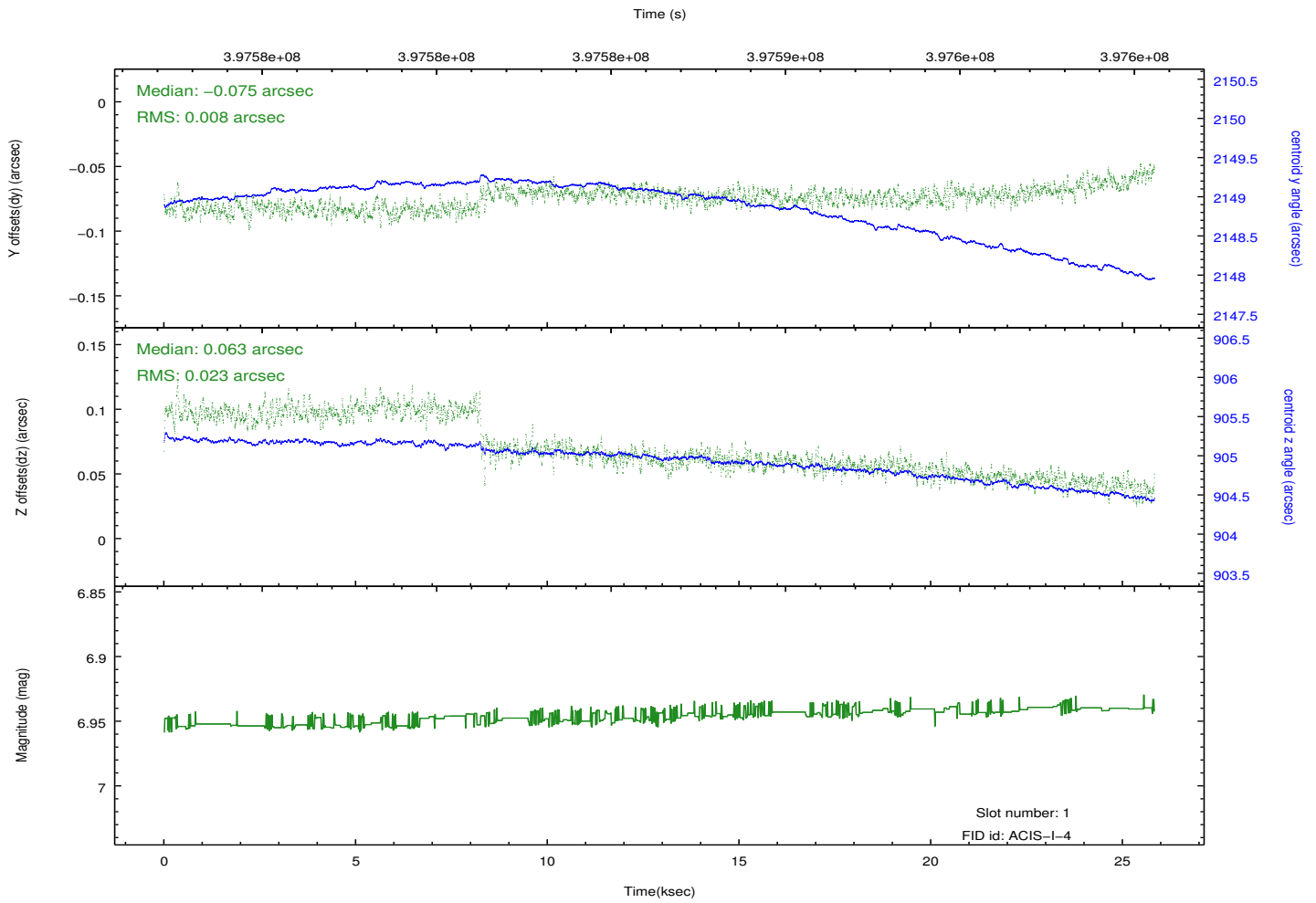
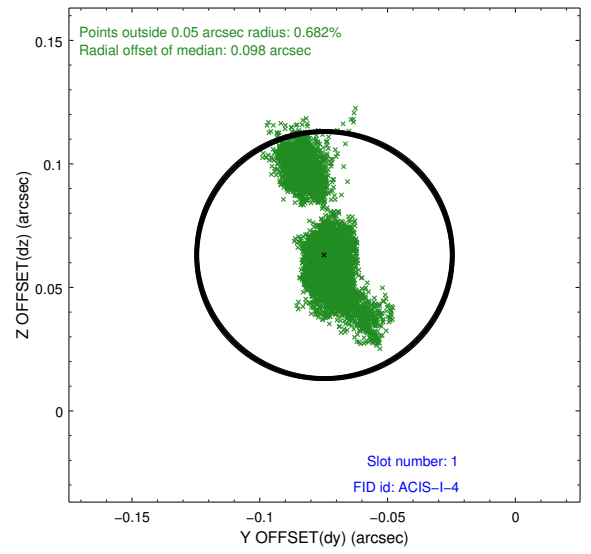
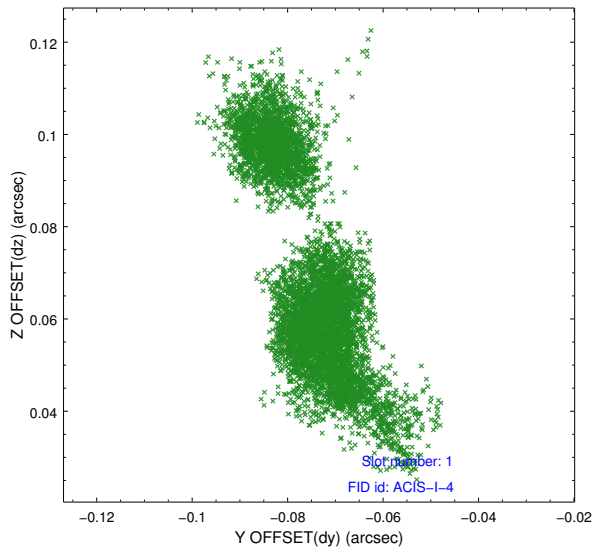


2.5 FID Slots

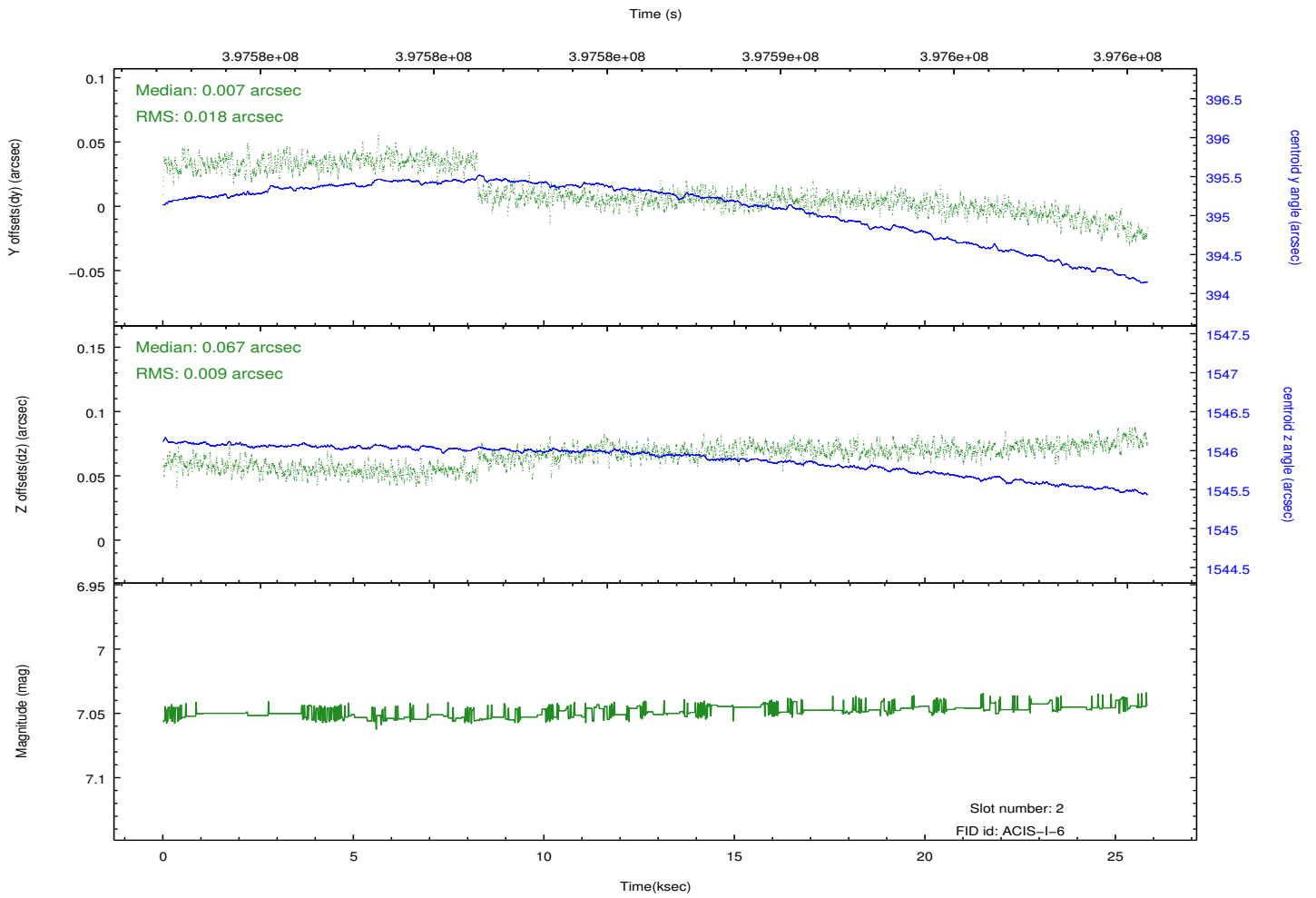
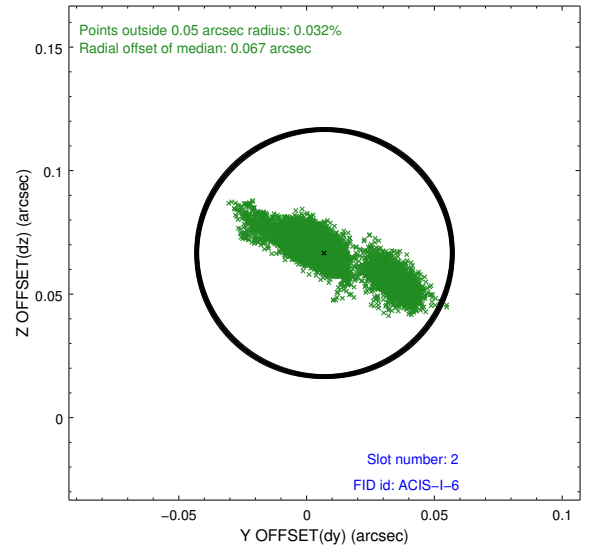
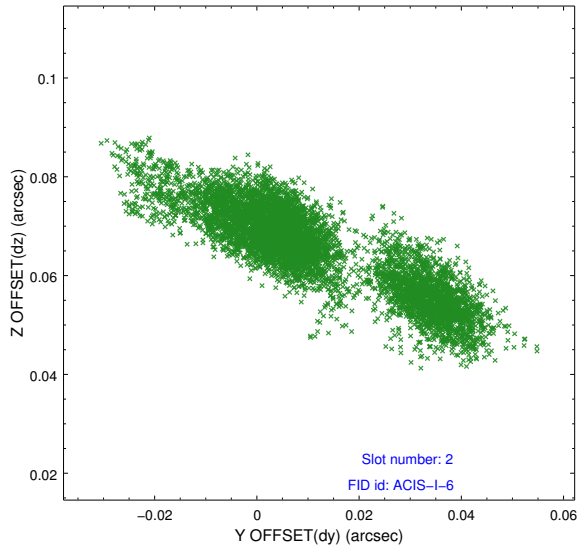
2.5.1 Slot 0



2.5.2 Slot 1



2.5.3 Slot 2



A Summary

A.1 Status

V&V Scientist	Jen Lauer
V&V Date (YYYY-MM-DD)	2012.07.10
V&V Edition	1
V&V Disposition and Status	OK
V&V Charge Time	25.046921223402

A.2 Comments