

V&V Reference Report

L2 ASCDS Version : 8.4.3

Observation 12531 - L2 Version 4
Chandra X-Ray Center

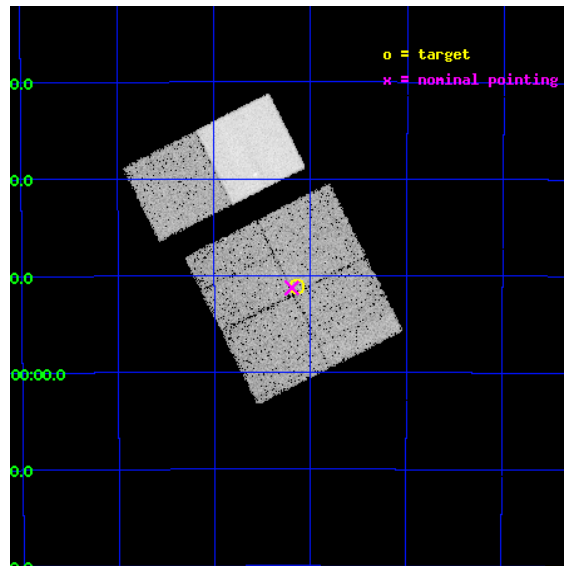
L2 Processing Date : Feb 12 2012

Contents

1	Front	2
2	OBI	3
2.1	OBI	3
2.1.1	Images	3
2.1.2	Bias	3
2.1.3	Parameters	4
2.1.4	Events	4
2.2	Compared Parameters	5
2.3	Aspect	6
2.4	Star Slots	9
2.4.1	Slot 3	9
2.4.2	Slot 4	10
2.4.3	Slot 5	11
2.4.4	Slot 6	12
2.4.5	Slot 7	13
2.5	FID Slots	14
2.5.1	Slot 0	14
2.5.2	Slot 1	15
2.5.3	Slot 2	16
A	Summary	17
A.1	Status	17
A.2	Comments	17

1 Front

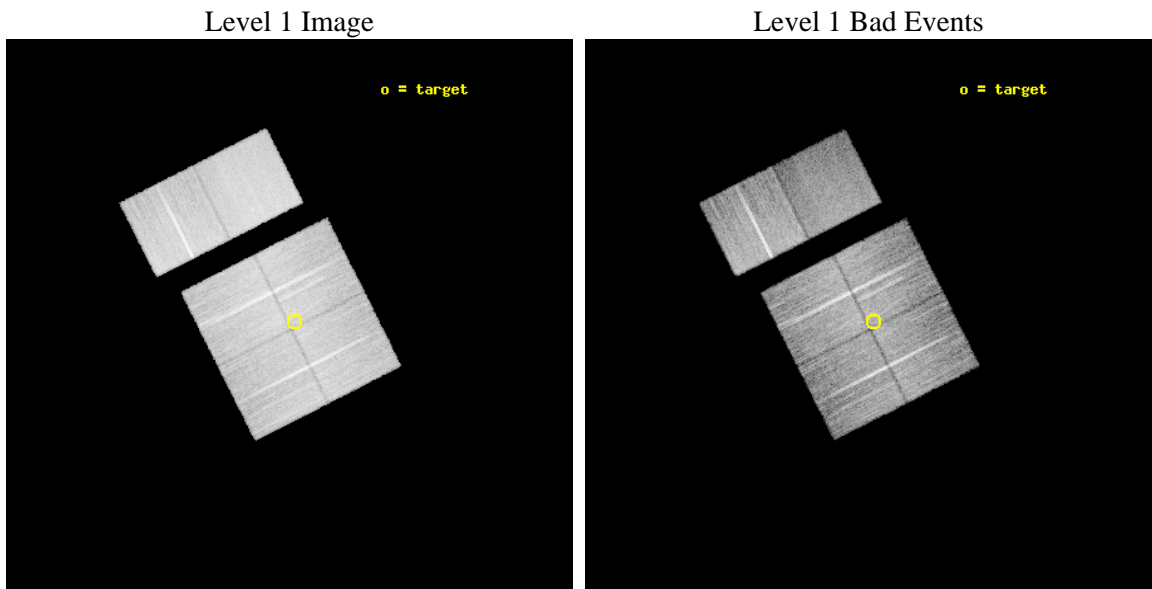
seq_num	401272	Sequence number
obs_id	12531	Observation id
title	Census of the Normal Spiral Arm Region	Proposal title
observer	Dr. John Tomsick	Principal investigator
object	Norma Region	Source name
dtcycle	0	
cycle	P	events from which exps? Prim/Second/Both
ra_targ	248.786131	Observer's specified target RA [deg]
dec_targ	-47.853299	Observer's specified target Dec [deg]
ra_nom	248.79804975796	Nominal RA [deg]
dec_nom	-47.85461744544	Nominal Dec [deg]
roll_nom	333.21751471035	Nominal Roll [deg]
revision	4	Processing version of data
ontime	19756.79992646	Sum of GTIs [s]
livetime	19506.627429674	Livetime [s]
ontime0	19756.79992646	Sum of GTIs [s]
ontime1	19756.79992646	Sum of GTIs [s]
ontime2	19756.79992646	Sum of GTIs [s]
ontime3	19756.79992646	Sum of GTIs [s]
ontime6	19756.79992646	Sum of GTIs [s]
ontime7	19756.79992646	Sum of GTIs [s]
l2events	142800	Number of level 2 events



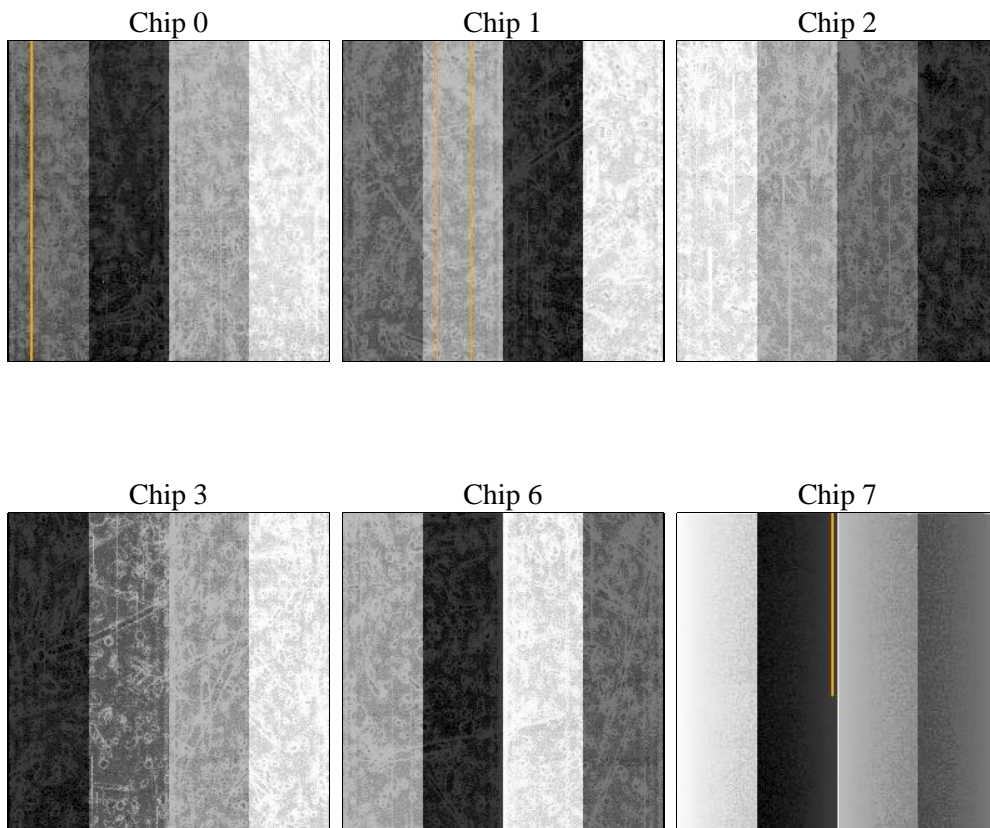
2 OBI

2.1 OBI

2.1.1 Images



2.1.2 Bias



2.1.3 Parameters

obi_num	0	Obi number	sched_exp_time	20000.000000	[s] Scheduled observation exposure time
ascdsver	8.4.3	Processing system revision	ontime	19756.79992646	Sum of GTIs [s]
caldbver	4.4.7	 	ontime0	19756.79992646	Sum of GTIs [s]
date	2012-02-12T11:28:12	Date and time of file creation	ontime1	19756.79992646	Sum of GTIs [s]
revision	4	Processing version of data	ontime2	19756.79992646	Sum of GTIs [s]
			ontime3	19756.79992646	Sum of GTIs [s]
			ontime6	19756.79992646	Sum of GTIs [s]
			ontime7	19756.79992646	Sum of GTIs [s]
			l1events	841203	Number of level 1 events

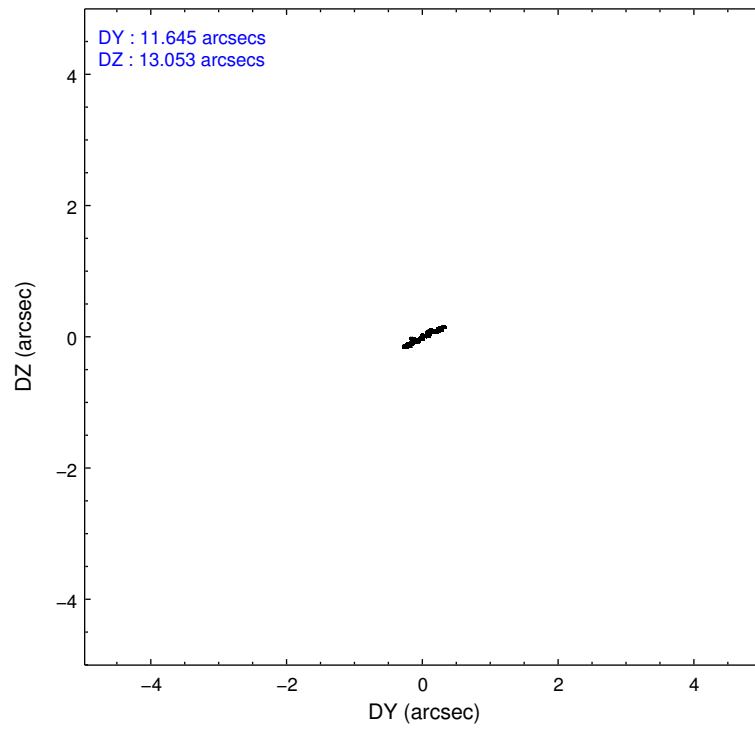
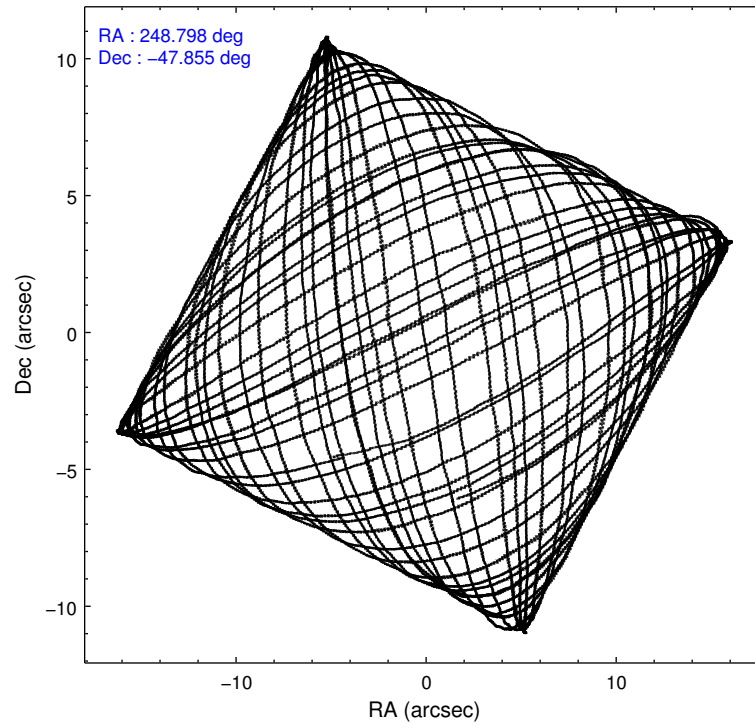
2.1.4 Events

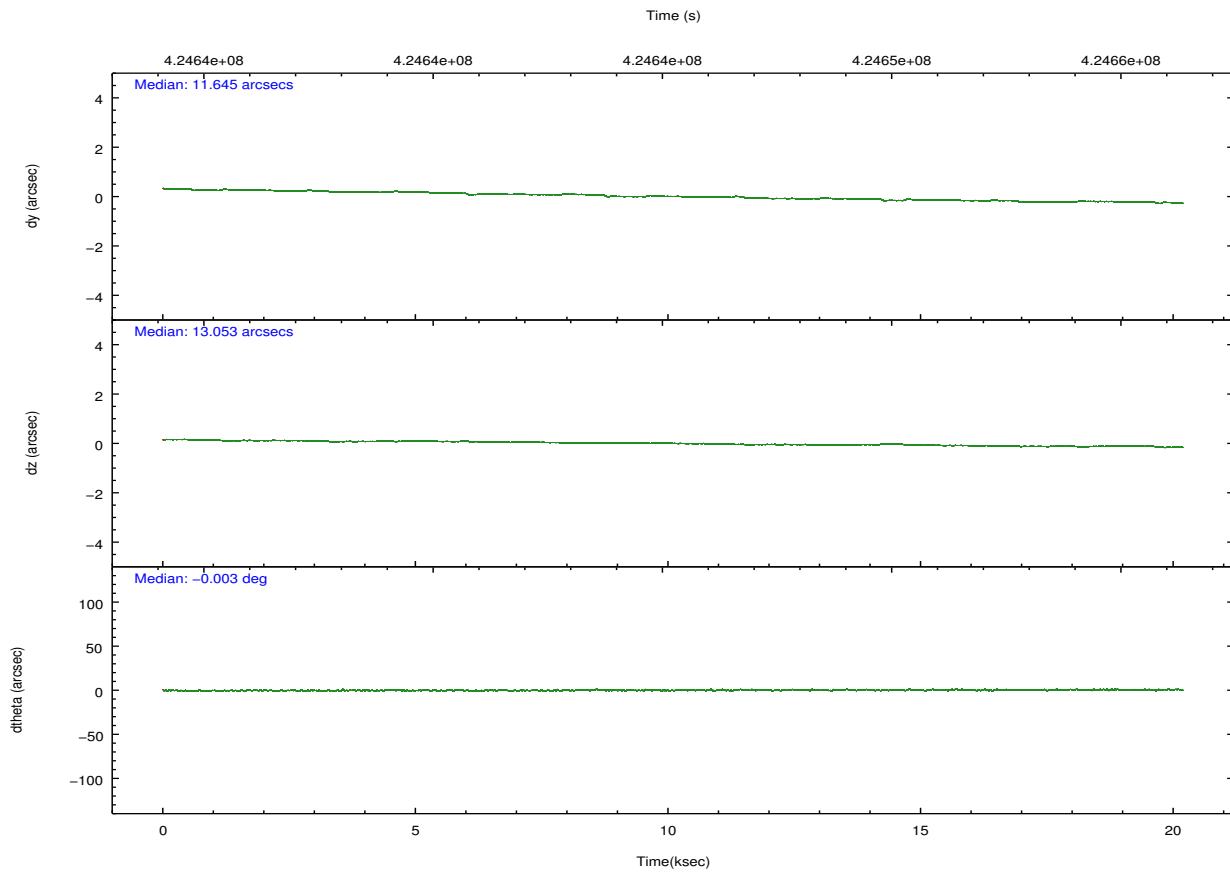
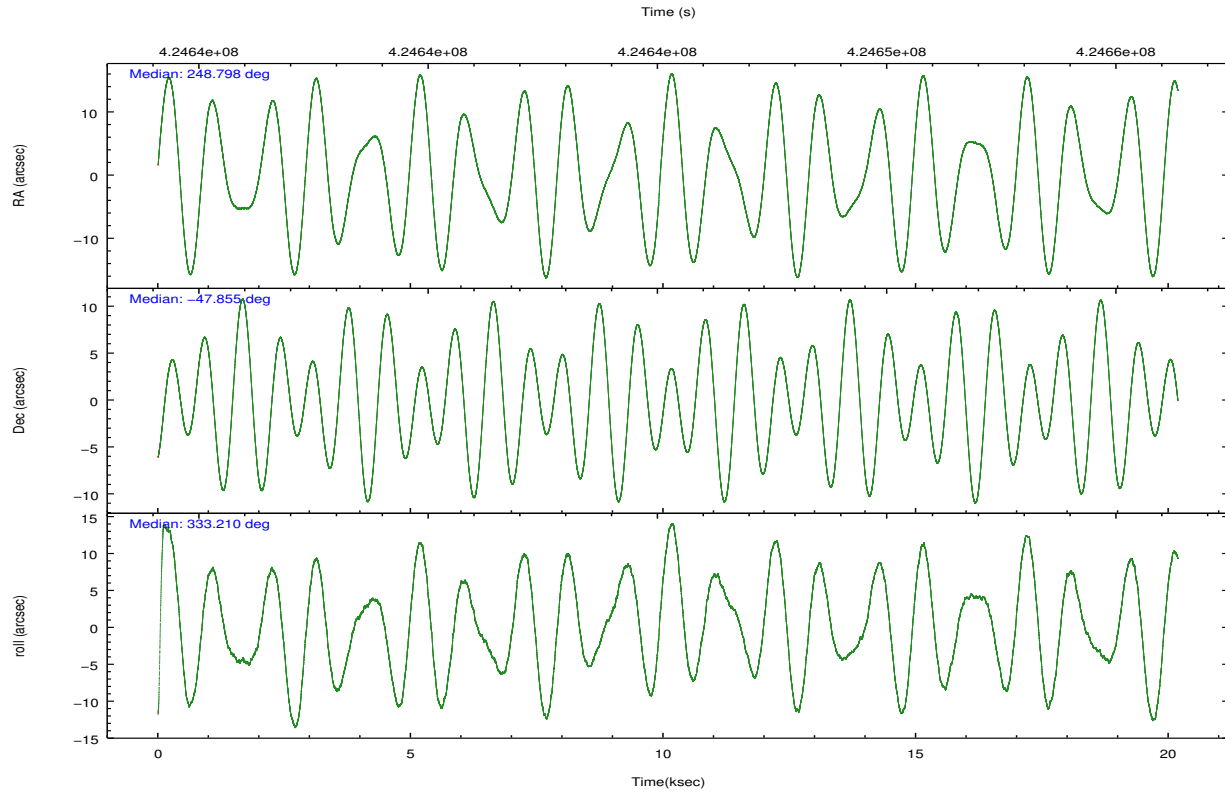
	ccd 0	ccd 1	ccd 2	ccd 3	ccd 6	ccd 7		ccd 0	ccd 1	ccd 2	ccd 3	ccd 6	ccd 7
level 1 events	121738	125901	144494	134719	149700	164651	grade 0 events	7184	7293	7730	6315	7601	6956
rejected events	104473	108071	126727	119459	131463	88995		5%	5%	5%	4%	5%	4%
rejected %	85%	85%	87%	88%	87%	54%	grade 1 events	93	70	100	72	69	231
								0%	0%	0%	0%	0%	0%
							grade 2 events	4100	3992	4205	3195	4261	16351
								3%	3%	2%	2%	2%	9%
							grade 3 events	1503	1619	1357	1503	1474	6647
								1%	1%	0%	1%	0%	4%
							grade 4 events	1451	1639	1712	1499	1545	6757
								1%	1%	1%	1%	1%	4%
							grade 5 events	4898	5571	4837	5924	5906	16485
								4%	4%	3%	4%	3%	10%
							grade 6 events	3030	3292	2766	2751	3362	38969
								2%	2%	1%	2%	2%	23%
							grade 7 events	99479	102425	121787	113460	125482	72255
								81%	81%	84%	84%	83%	43%

2.2 Compared Parameters

Parameter	Planned	Actual	Parameter	Planned	Actual
Instrument	ACIS	ACIS	Obspar format version number	7	7
Detector	ACIS-012367	ACIS-012367	Obspar file type	PREDICTED	ACTUAL
Grating	NONE	NONE	Obspar update status	NONE	UPDATED
Data mode	VFAINT	VFAINT	CCD I0 on	Y	Y
Observation mode	POINTING	POINTING	CCD I1 on	Y	Y
[deg] Pointing RA	248.757094	248.7980497579562	CCD I2 on	Y	Y
[deg] Pointing Dec	-47.856276	-47.85461744544012	CCD I3 on	Y	Y
[deg] Pointing Roll	332.978465	333.2175147103483	CCD S0 on	N	N
[mm] SIM focus pos	-0.782348	-0.7809083437167272	CCD S1 on	N	N
[mm] SIM defocus	0	0.001439871863259334	CCD S2 on	O2	Y
[mm] SIM translation stage pos	-233.592463	-233.5874344608287	CCD S3 on	O1	Y
[mm] SIM translation stage offset	0	-0.005018542100998502	CCD S4 on	N	N
[s] Observation start time (MET)	424635331.184000	424634954.9069	CCD S5 on	N	N
Observation start date	2011-06-16T18:14:25	2011-06-16T18:09:14	Number of optional ACIS chips dropped	0	0
[s] Observation end time (MET)	424655331.184000	424655464.64546	On-chip summing requested	N	N
Observation end date	2011-06-16T23:47:45	2011-06-16T23:51:04	Subarray requested	NONE	NONE
Read mode	TIMED	TIMED	Alternating exposures requested	N	N
			[s] Primary exposure time	0.000000	3.2

2.3 Aspect





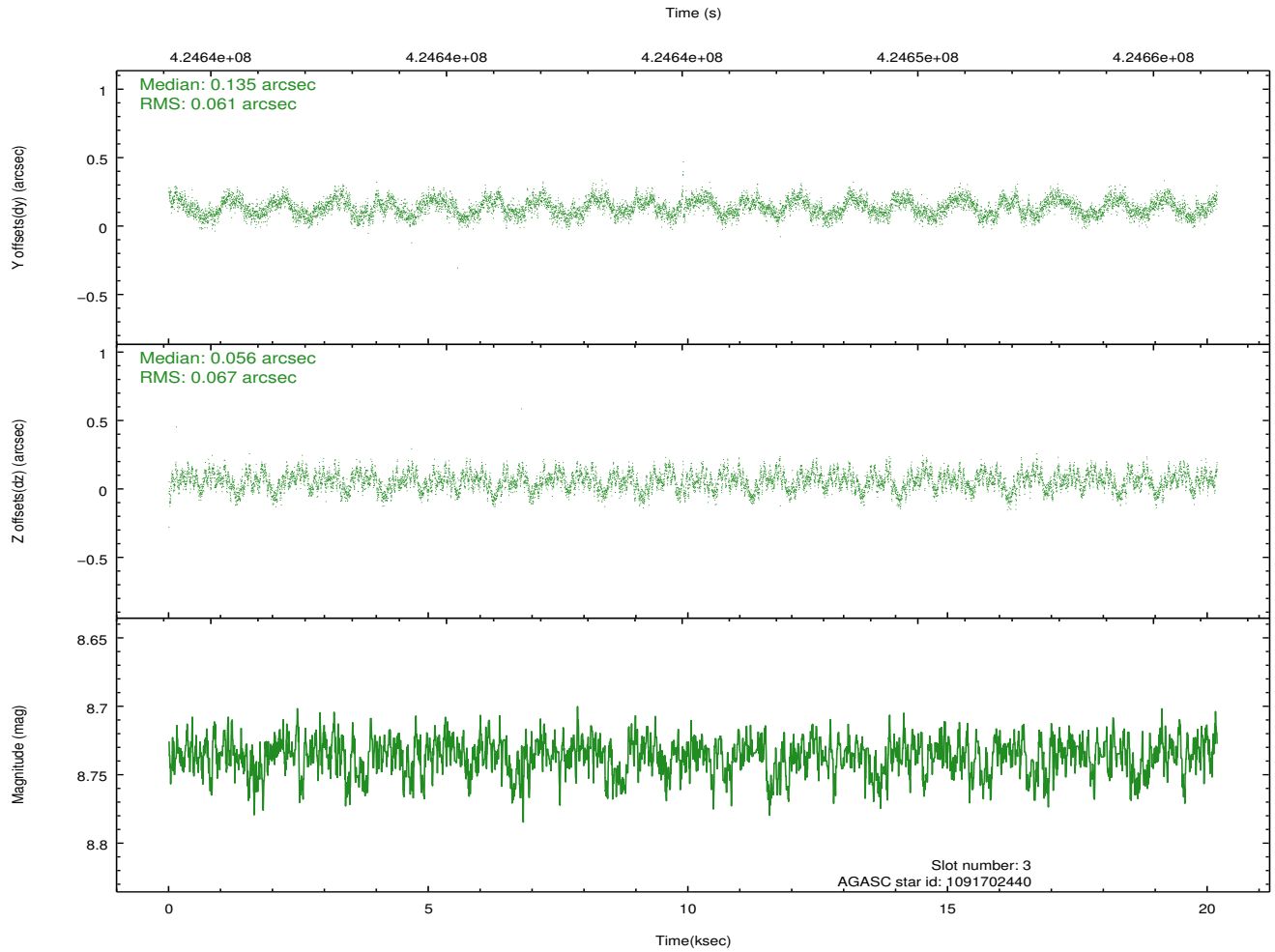
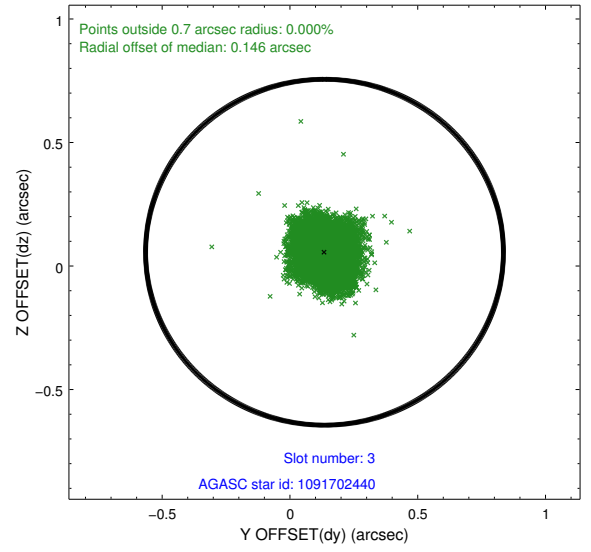
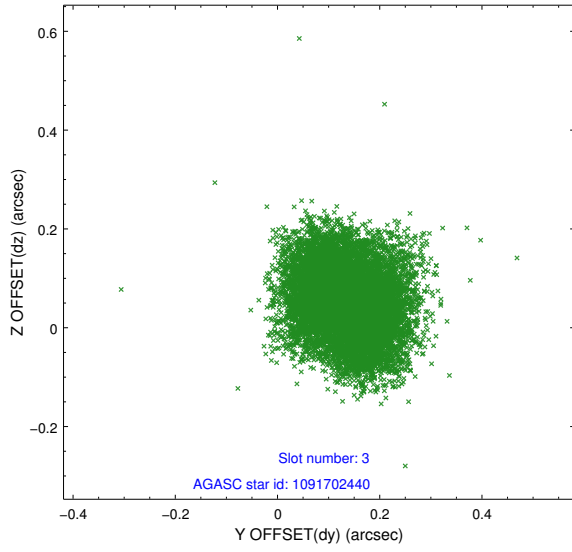
Slot Statistics

slot	status	id	mag	n_pts	med_dy	med_dz	dr1	dr2	ra	dec	mean_y	mean_z
0	FID	ACIS-I-1	7.14	4924	0.051	0.001	0.006	0.012	0.000000	0.000000	927.96	-836.59
1	FID	ACIS-I-5	7.13	4924	-0.193	0.065	0.006	0.010	0.000000	0.000000	-1820.31	1060.84
2	FID	ACIS-I-6	7.14	4923	0.051	0.005	0.007	0.011	0.000000	0.000000	393.28	1705.52
3	GUIDE	1091702440	8.74	9840	0.135	0.056	0.099	0.151	248.295809	-47.683380	-1276.92	43.14
4	GUIDE	1091705016	7.81	9844	-0.126	-0.099	0.059	0.097	249.888030	-47.558250	1968.92	2186.24
5	GUIDE	1091709408	9.21	9837	0.002	-0.144	0.123	0.196	249.304466	-47.312562	303.15	2346.51
6	GUIDE	1091709768	7.71	9840	0.010	0.003	0.091	0.140	249.435228	-47.706899	1222.67	1219.10
7	GUIDE	1091726152	7.18	9846	-0.027	0.172	0.081	0.132	248.525265	-48.461492	497.79	-2192.85

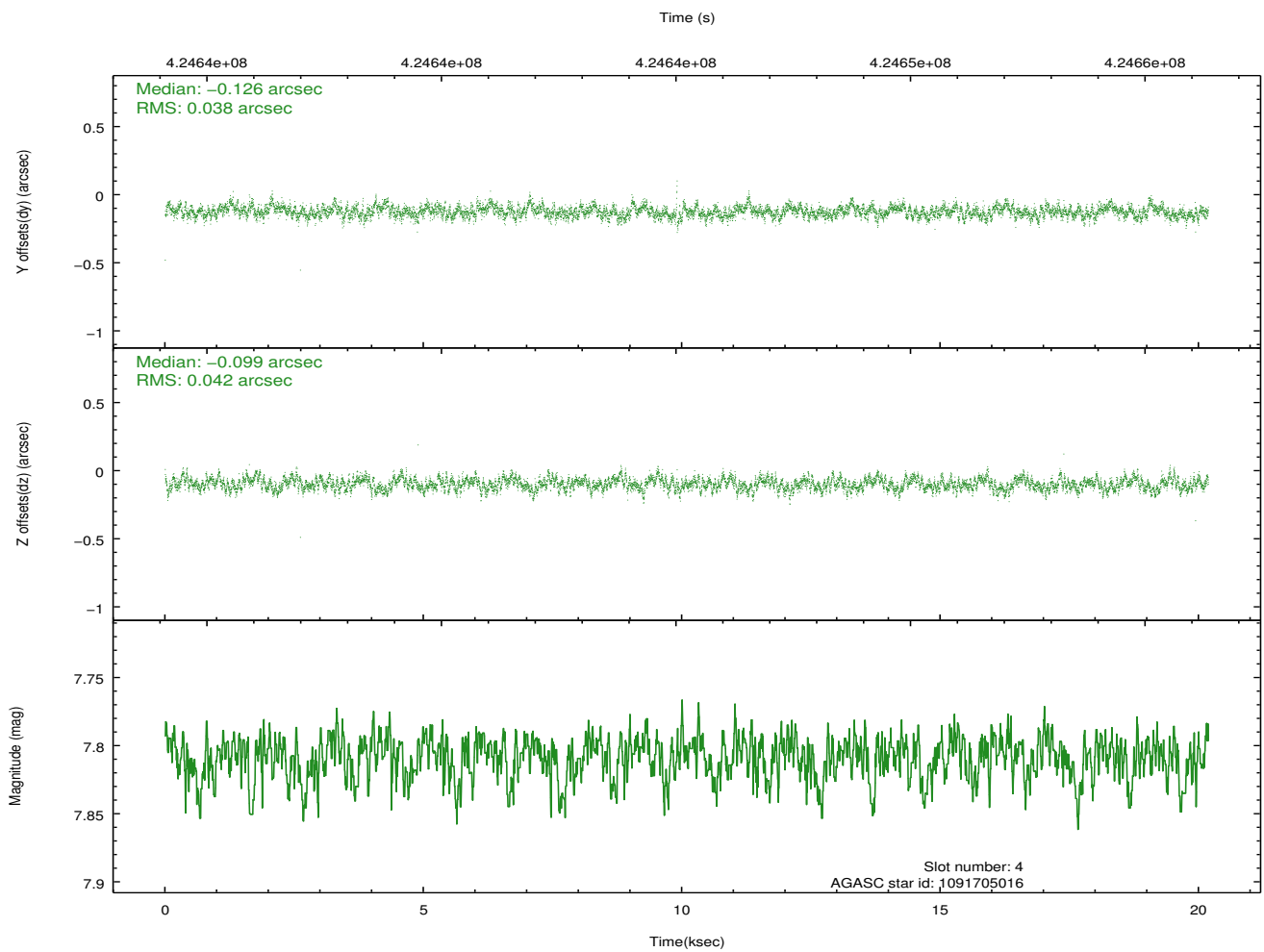
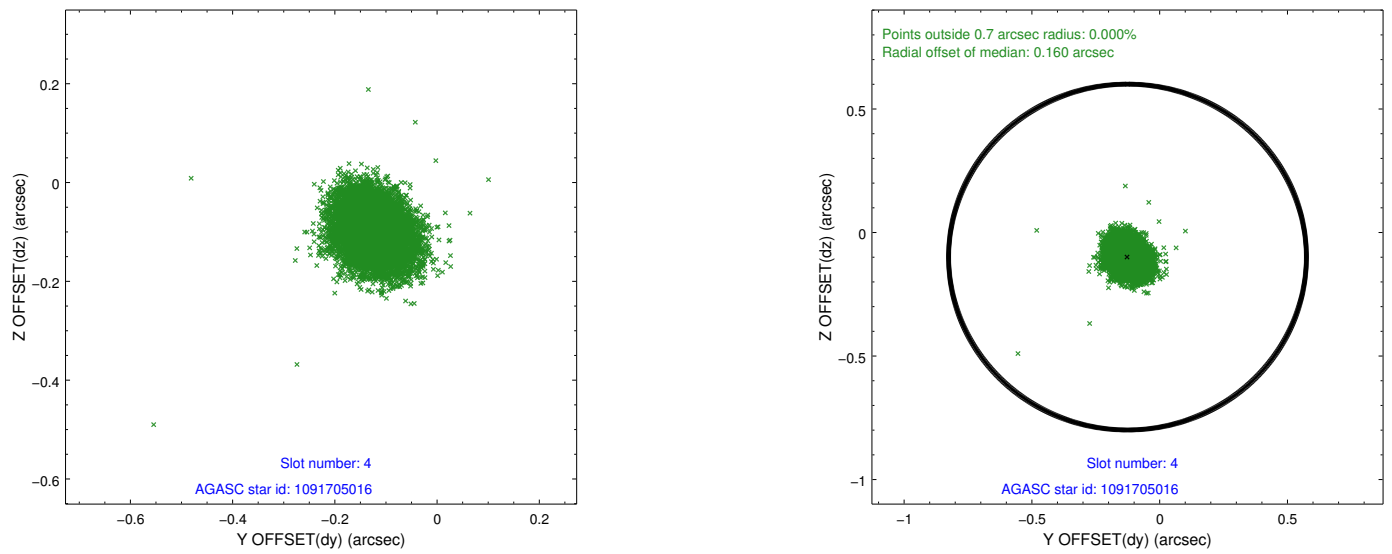
∞

2.4 Star Slots

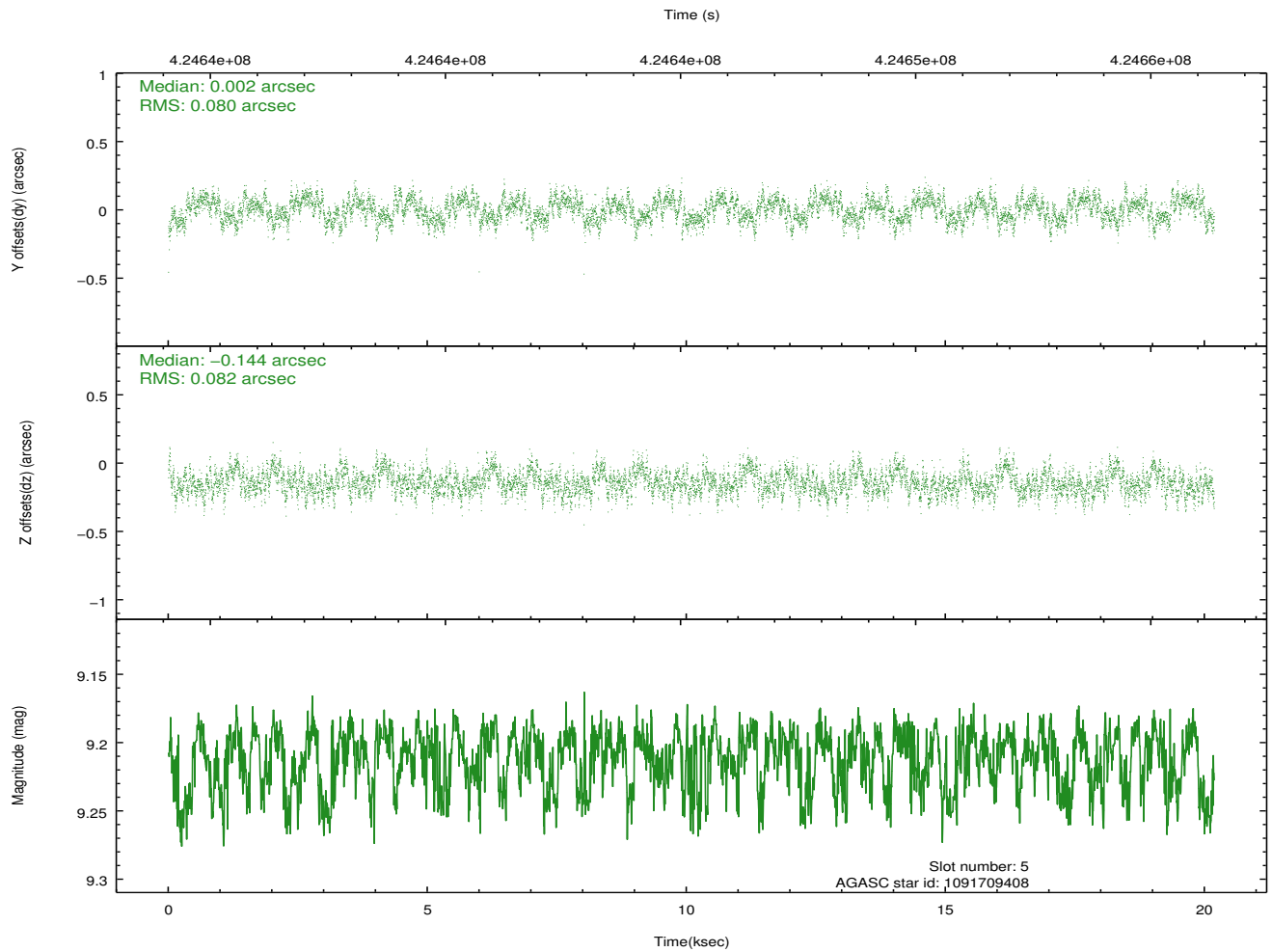
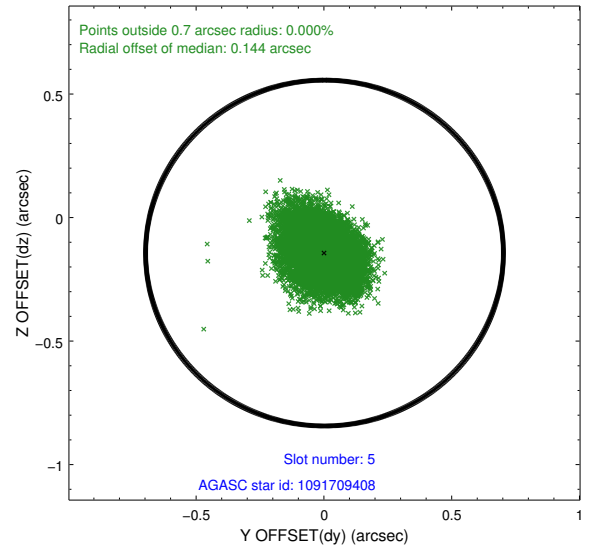
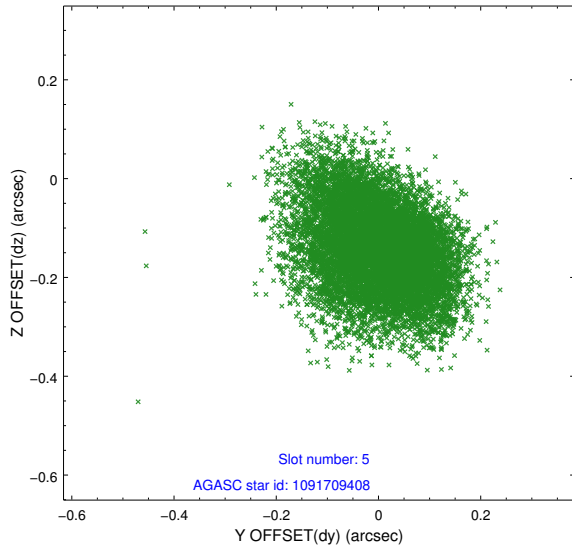
2.4.1 Slot 3



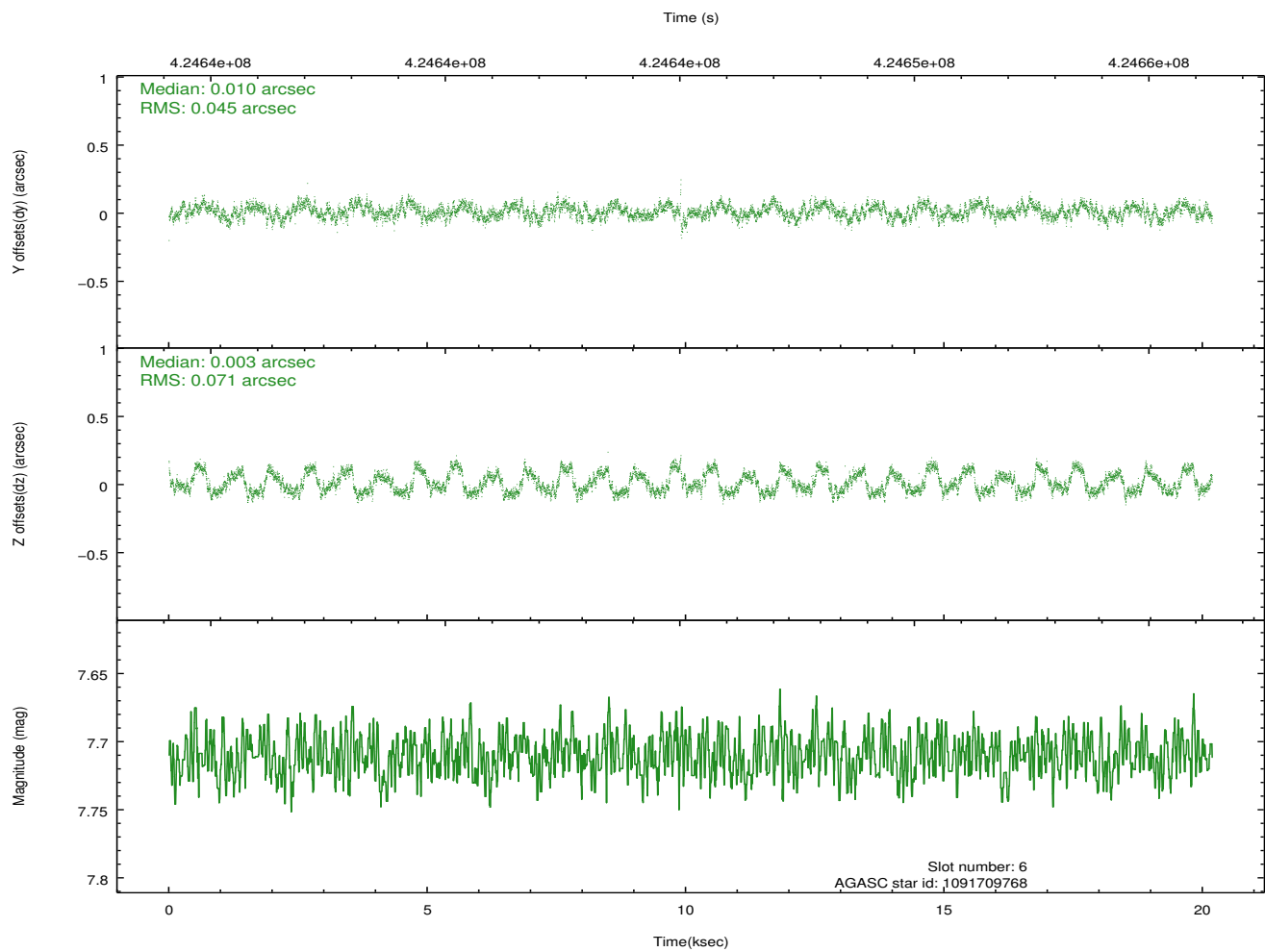
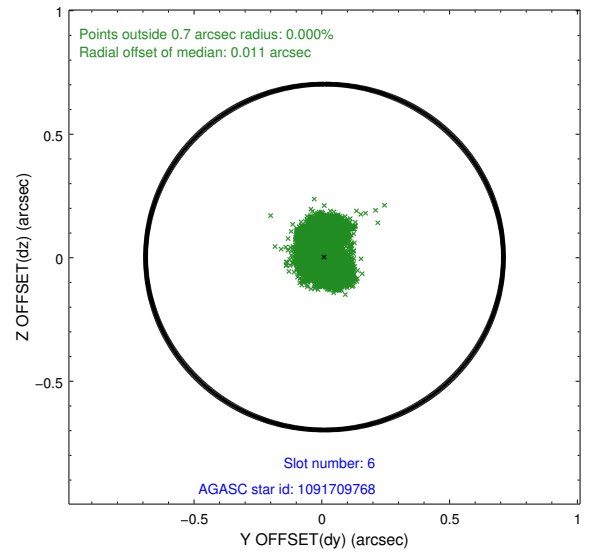
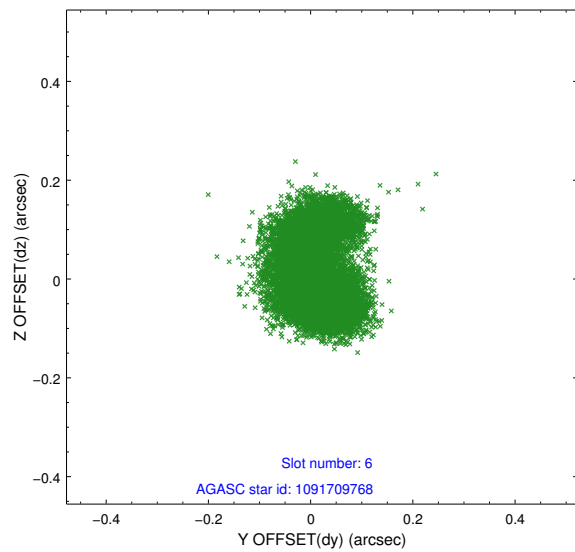
2.4.2 Slot 4



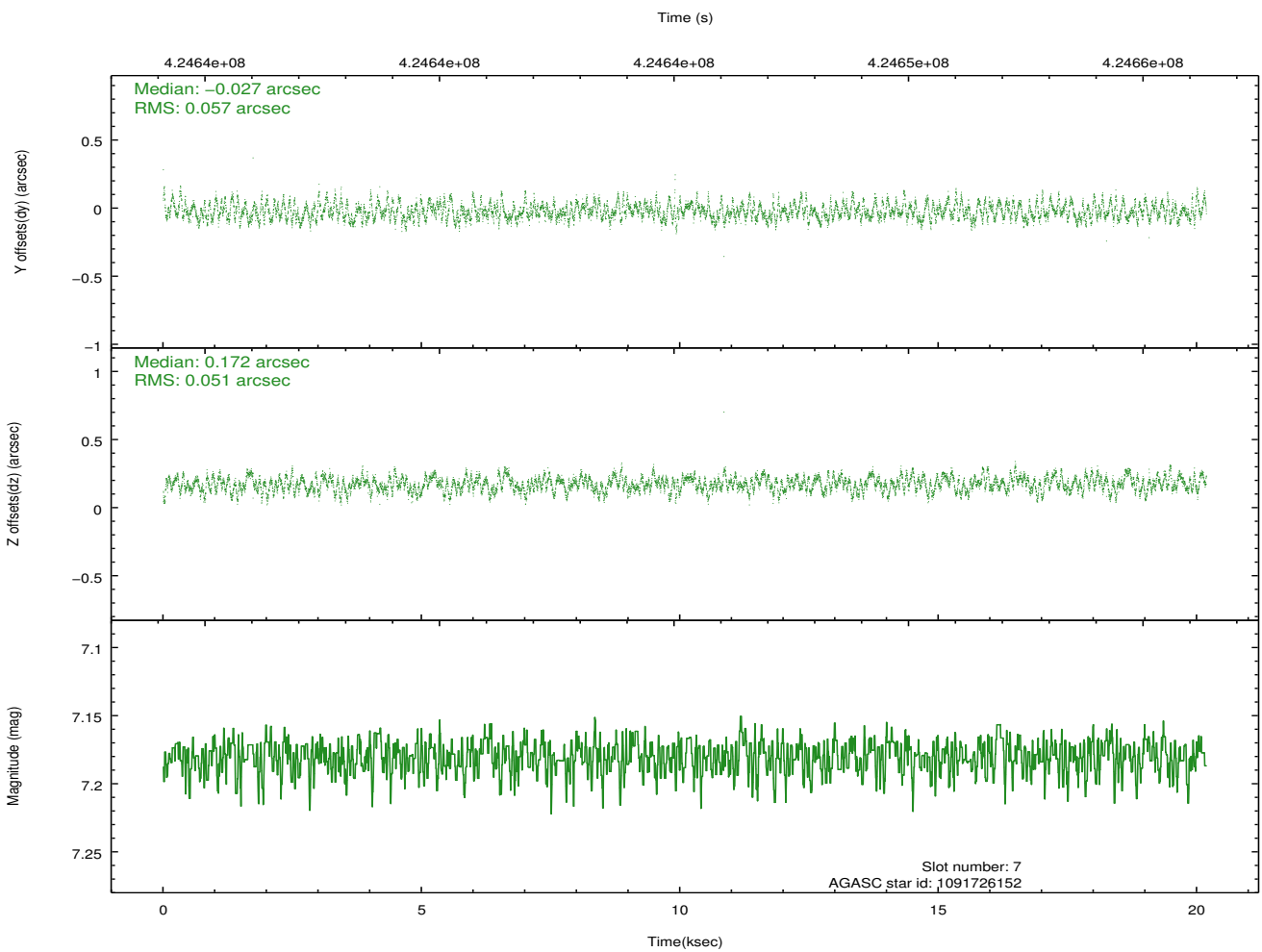
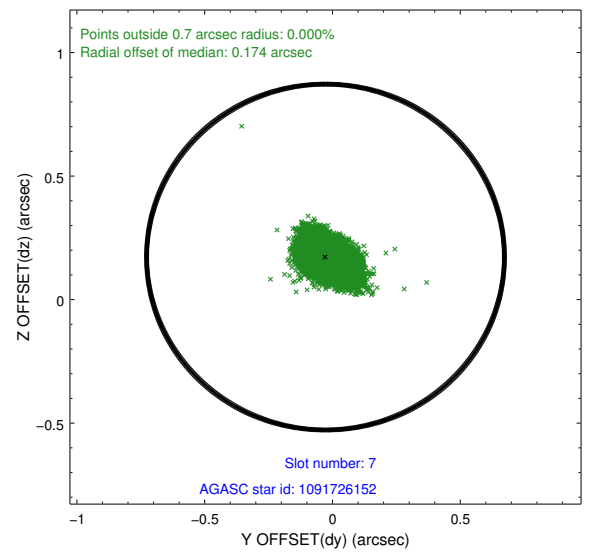
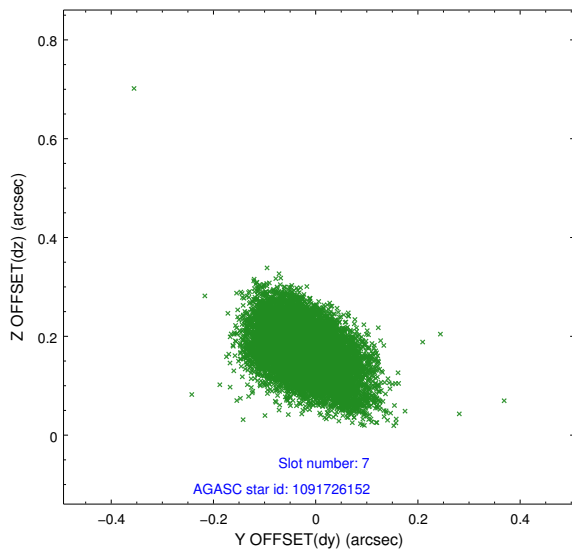
2.4.3 Slot 5



2.4.4 Slot 6

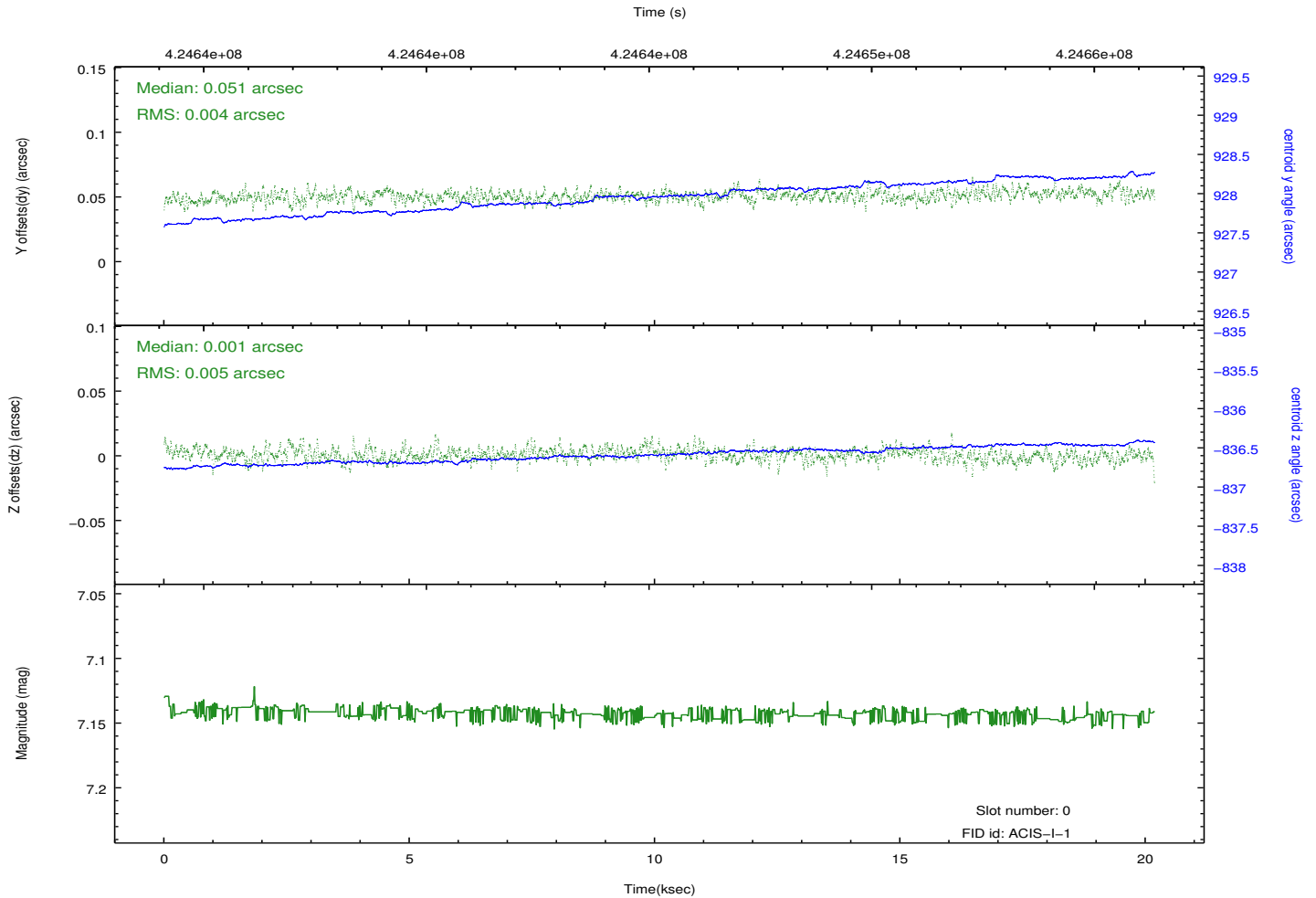
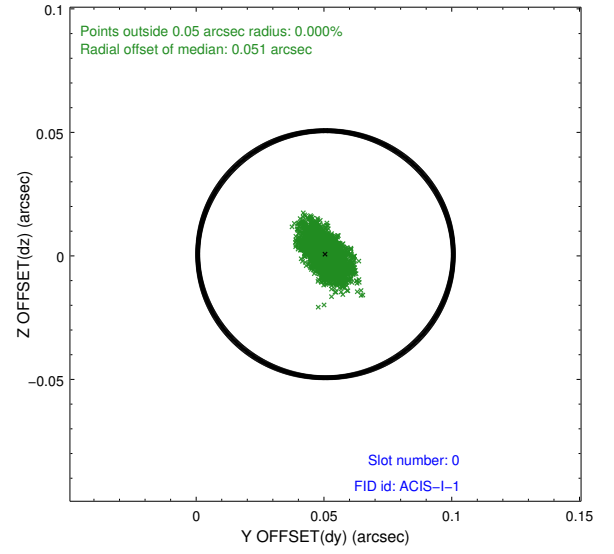
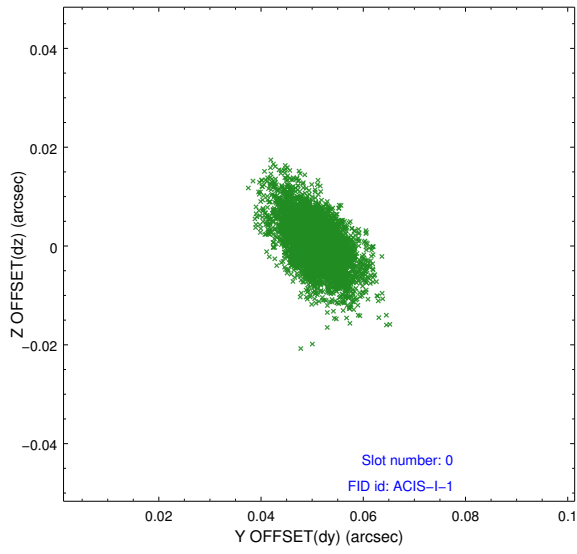


2.4.5 Slot 7

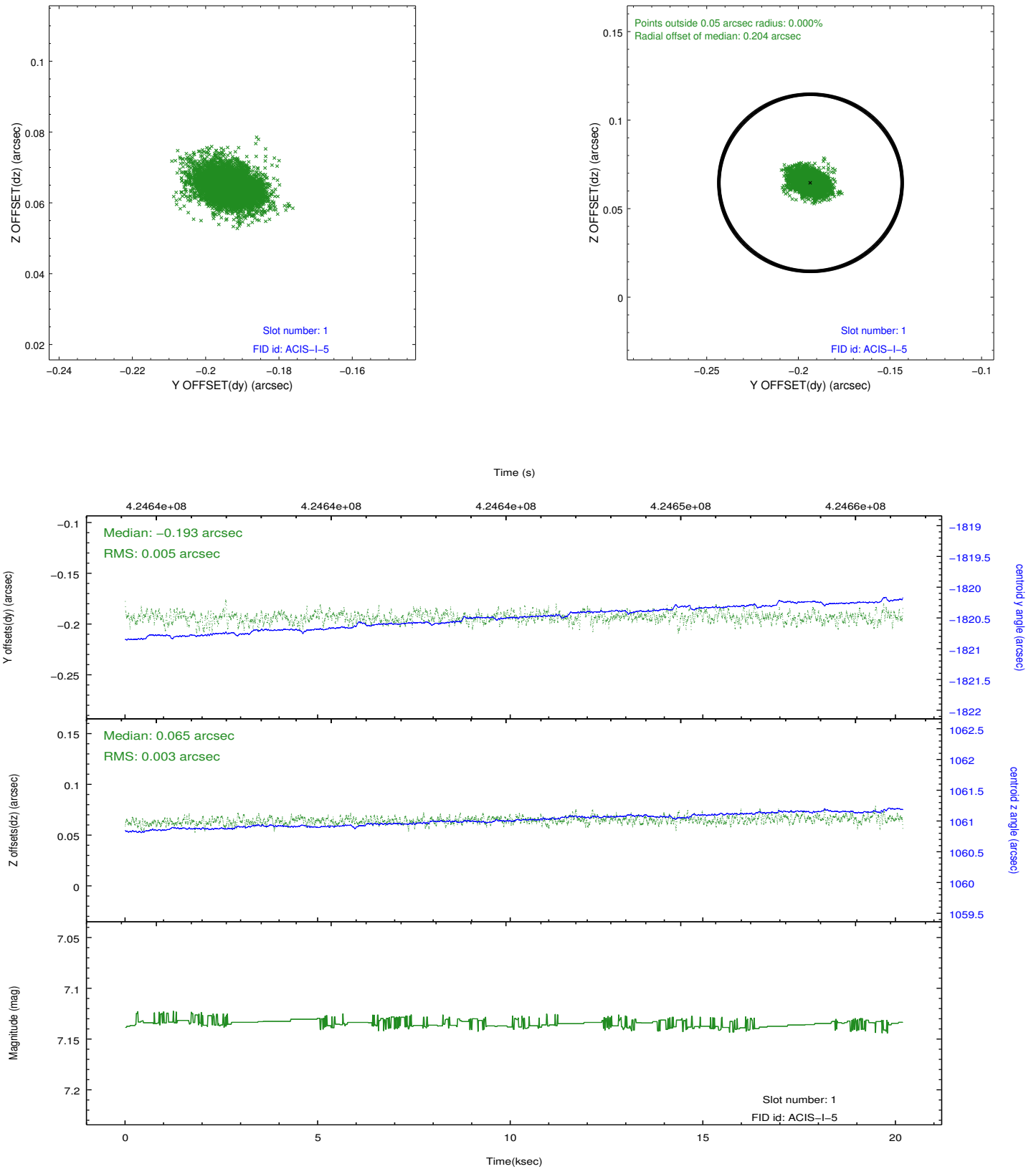


2.5 FID Slots

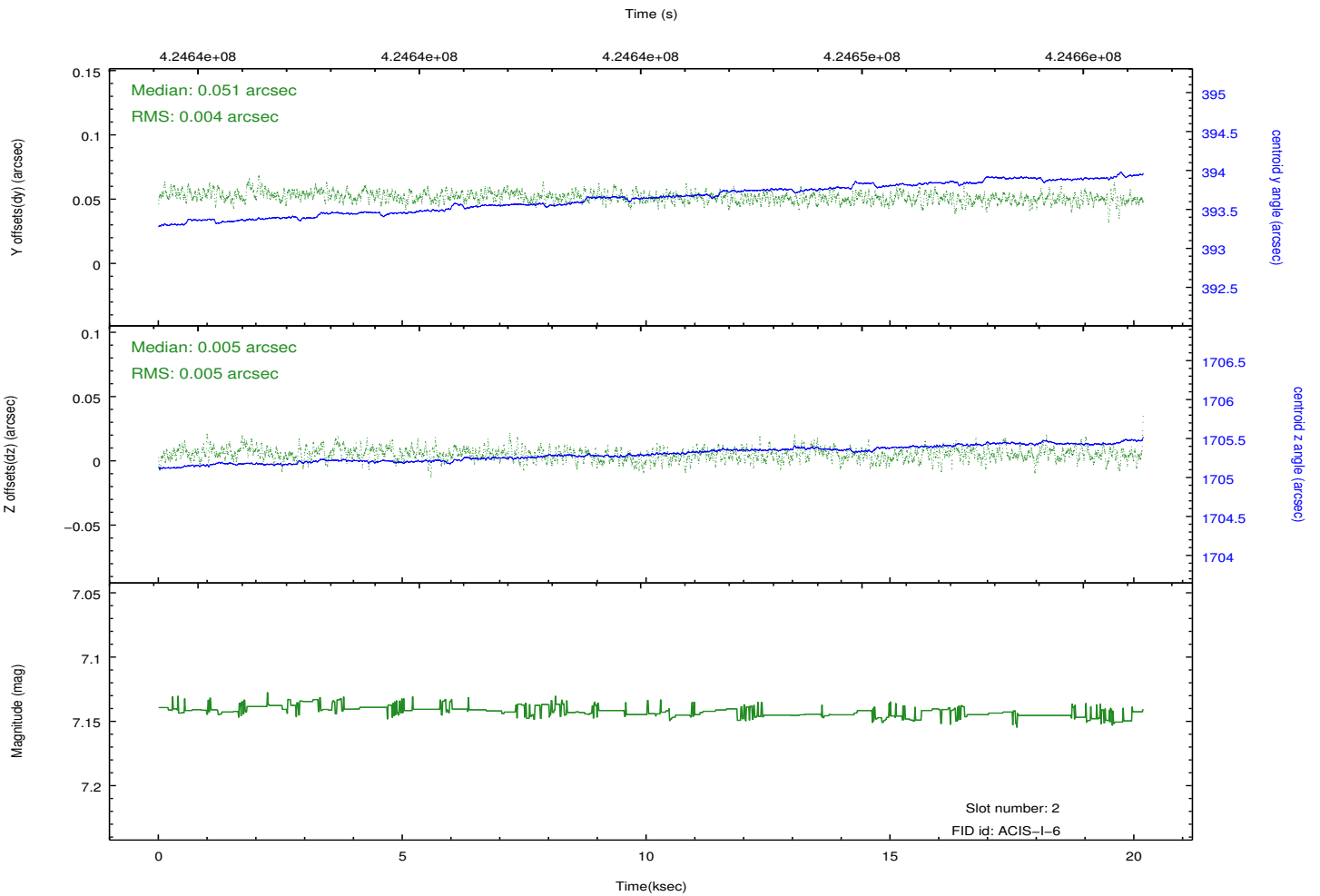
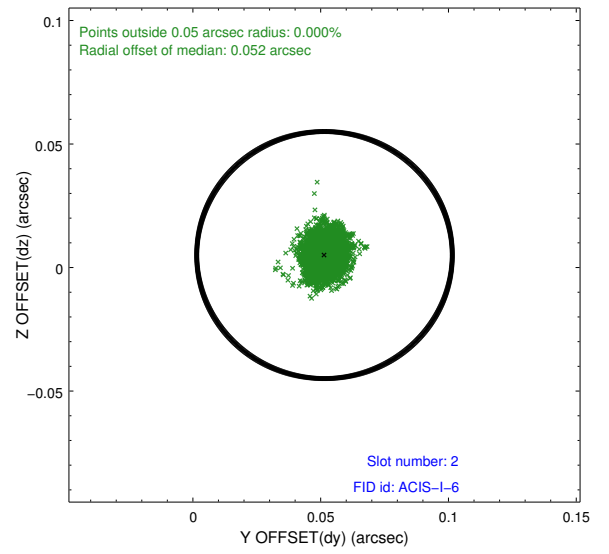
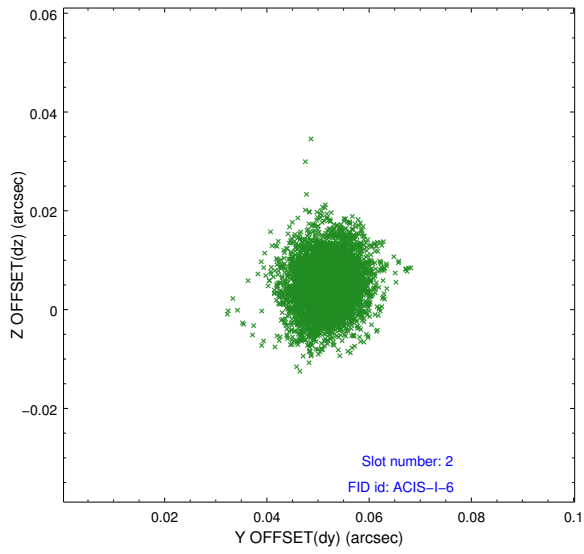
2.5.1 Slot 0



2.5.2 Slot 1



2.5.3 Slot 2



A Summary

A.1 Status

V&V Scientist	Jen Lauer
V&V Date (YYYY-MM-DD)	2012.02.14
V&V Edition	1
V&V Disposition and Status	OK
V&V Charge Time	19.75679992646

A.2 Comments

Joint Proposal: NOAO