

V&V Reference Report

L2 ASCDS Version : 8.4.3

Observation 12911 - L2 Version 2
Chandra X-Ray Center

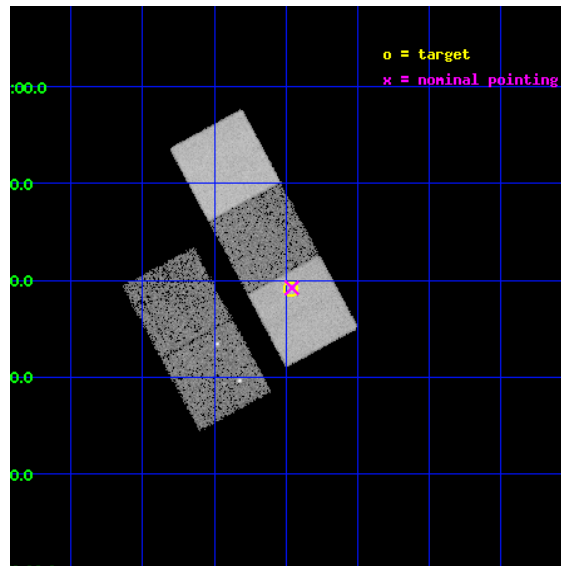
L2 Processing Date : Feb 28 2012

Contents

1	Front	2
2	OBI	3
2.1	OBI	3
2.1.1	Images	3
2.1.2	Bias	3
2.1.3	Parameters	4
2.1.4	Events	4
2.2	Compared Parameters	5
2.3	Aspect	6
2.4	Star Slots	9
2.4.1	Slot 3	9
2.4.2	Slot 4	10
2.4.3	Slot 5	11
2.4.4	Slot 6	12
2.4.5	Slot 7	13
2.5	FID Slots	14
2.5.1	Slot 0	14
2.5.2	Slot 1	15
2.5.3	Slot 2	16
A	Summary	17
A.1	Status	17
A.2	Comments	17

1 Front

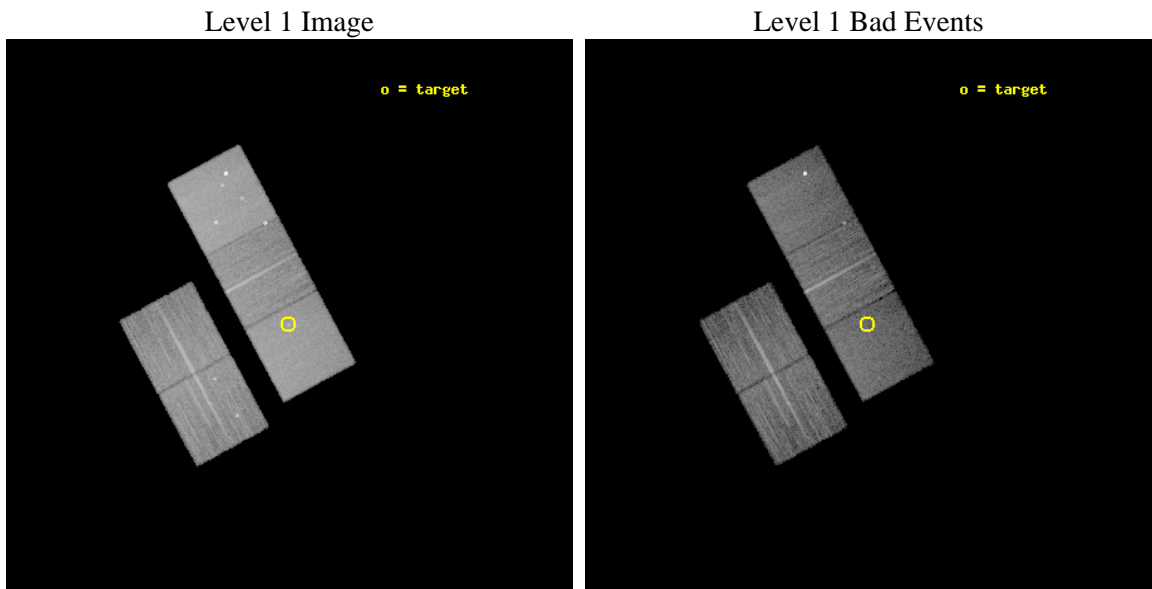
seq_num	801048	Sequence number
obs_id	12911	Observation id
title	Abell 1882: A Proto-cluster at Low Redshift	Proposal title
observer	Professor Christopher Miller	Principal investigator
object	A1882c	Source name
dtcycle	0	
cycle	P	events from which exps? Prim/Second/Both
ra_targ	213.74125	Observer's specified target RA [deg]
dec_targ	-0.348806	Observer's specified target Dec [deg]
ra_nom	213.73975719119	Nominal RA [deg]
dec_nom	-0.34617347870103	Nominal Dec [deg]
roll_nom	61.633853673267	Nominal Roll [deg]
revision	2	Processing version of data
ontime	16445.100714982	Sum of GTIs [s]
livetime	16230.233367433	Livetime [s]
ontime2	16444.936554968	Sum of GTIs [s]
ontime3	16444.97761482	Sum of GTIs [s]
ontime5	16445.059674978	Sum of GTIs [s]
ontime6	16445.018634975	Sum of GTIs [s]
ontime7	16445.100714982	Sum of GTIs [s]
l2events	170045	Number of level 2 events



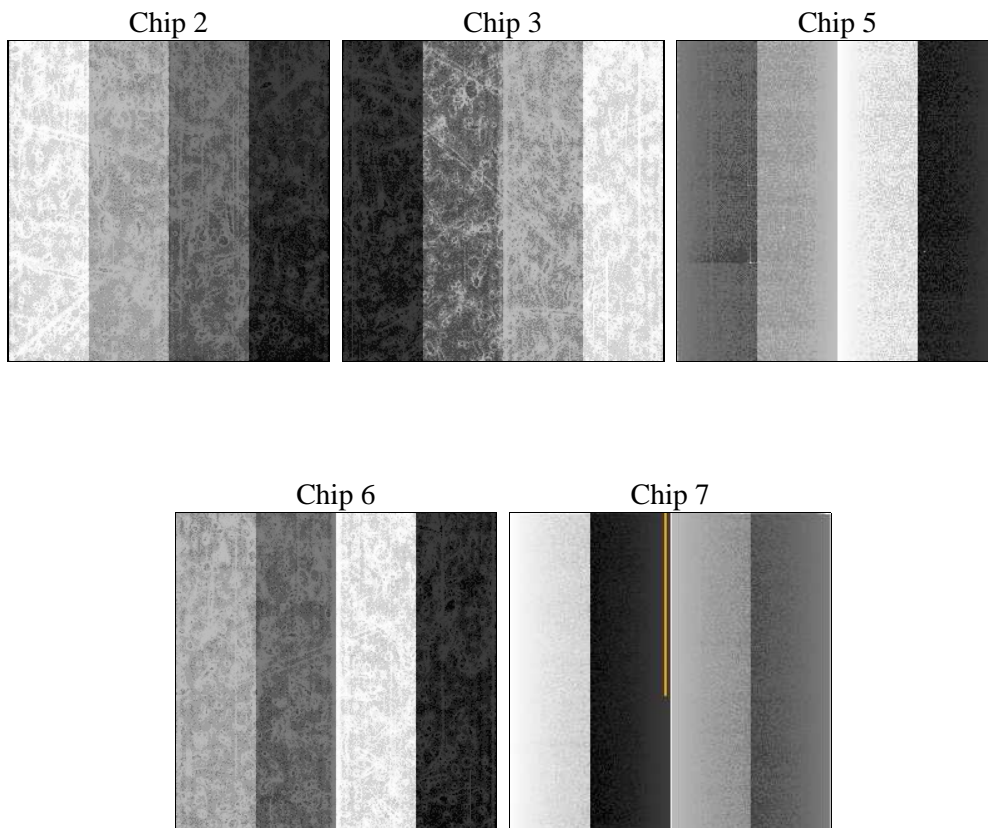
2 OBI

2.1 OBI

2.1.1 Images



2.1.2 Bias



2.1.3 Parameters

obi_num	0	Obi number	sched_exp_time	16666.666000	[s] Scheduled observation exposure time
ascdsver	8.4.3	Processing system revision	ontime	16445.100714982	Sum of GTIs [s]
caldbver	4.4.8	 	ontime2	16444.936554968	Sum of GTIs [s]
date	2012-02-28T19:06:07	Date and time of file creation	ontime3	16444.97761482	Sum of GTIs [s]
revision	2	Processing version of data	ontime5	16445.059674978	Sum of GTIs [s]
			ontime6	16445.018634975	Sum of GTIs [s]
			ontime7	16445.100714982	Sum of GTIs [s]
			l1events	634012	Number of level 1 events

2.1.4 Events

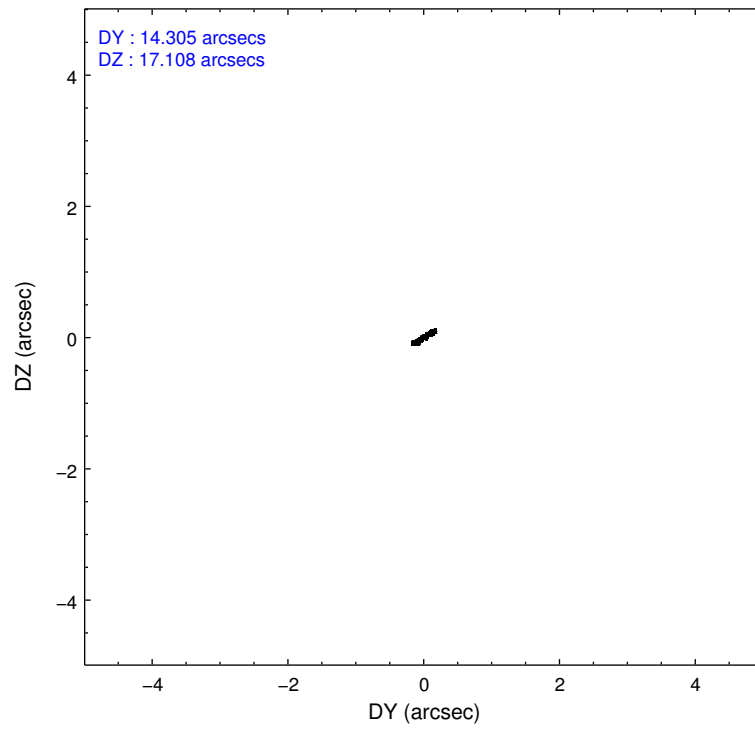
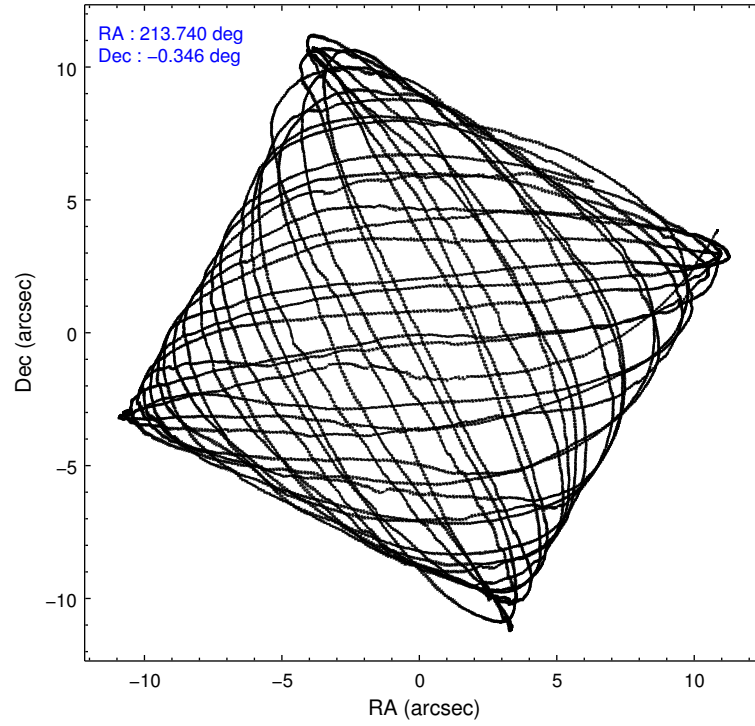
	ccd 2	ccd 3	ccd 5	ccd 6	ccd 7
level 1 events	102021	106968	177603	108705	138715
rejected events	90434	94197	92429	96293	76961
rejected %	88%	88%	52%	88%	55%

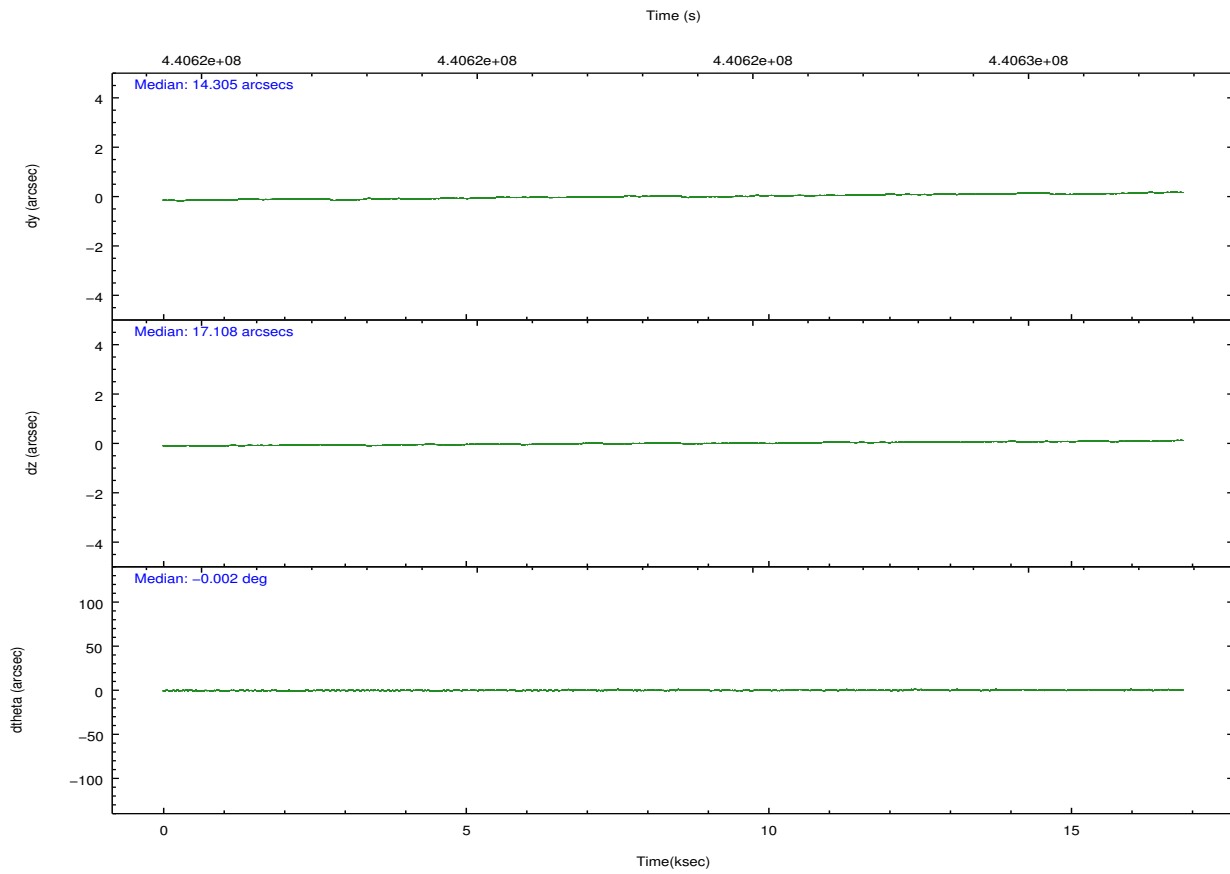
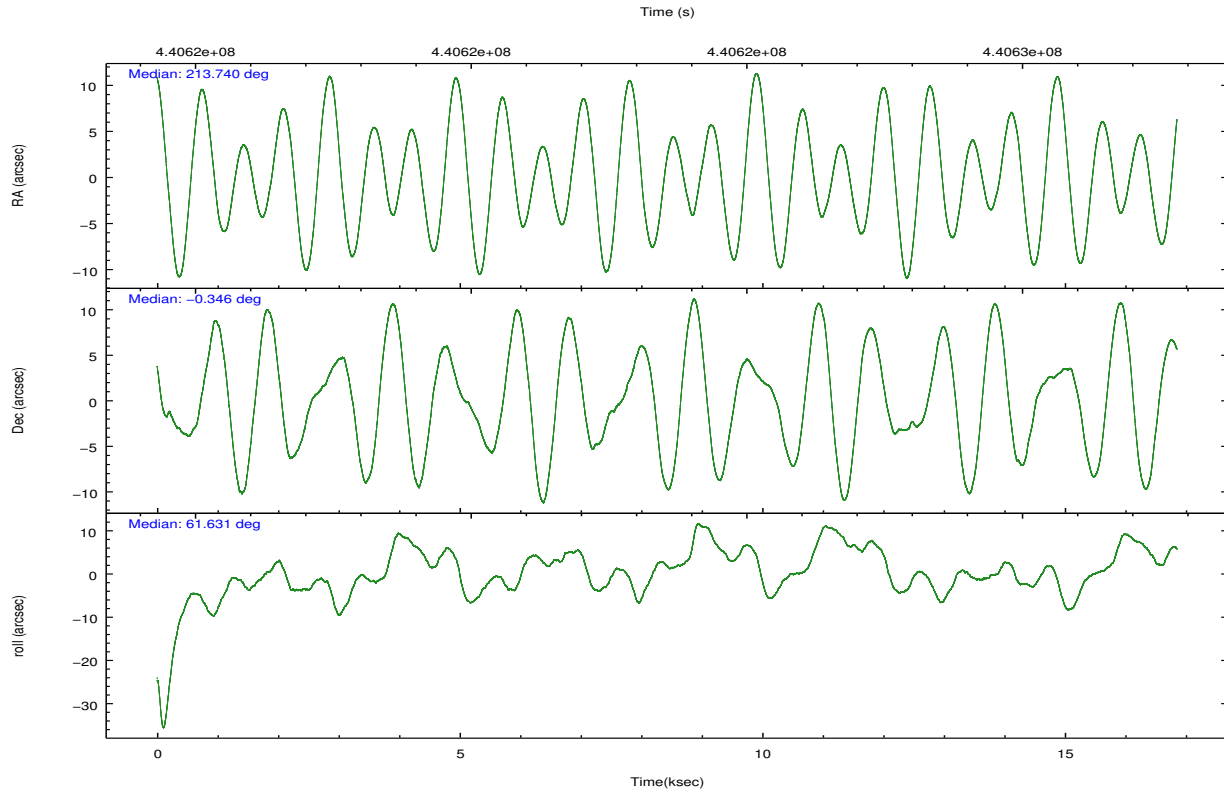
	ccd 2	ccd 3	ccd 5	ccd 6	ccd 7
grade 0 events	4117	5315	9083	4253	5957
	4%	4%	5%	3%	4%
grade 1 events	58	67	433	50	182
	0%	0%	0%	0%	0%
grade 2 events	2788	2606	25366	2775	12699
	2%	2%	14%	2%	9%
grade 3 events	1224	1246	3235	1273	5408
	1%	1%	1%	1%	3%
grade 4 events	1216	1246	3060	1278	5370
	1%	1%	1%	1%	3%
grade 5 events	4412	5033	16569	5138	14226
	4%	4%	9%	4%	10%
grade 6 events	2243	2364	44449	2833	32333
	2%	2%	25%	2%	23%
grade 7 events	85963	89091	75408	91105	62540
	84%	83%	42%	83%	45%

2.2 Compared Parameters

Parameter	Planned	Actual	Parameter	Planned	Actual
Instrument	ACIS	ACIS	Obspar format version number	7	7
Detector	ACIS-23567	ACIS-23567	Obspar file type	PREDICTED	ACTUAL
Grating	NONE	NONE	Obspar update status	NONE	UPDATED
Data mode	VFAINT	VFAINT	CCD I0 on	N	N
Observation mode	POINTING	POINTING	CCD I1 on	N	N
[deg] Pointing RA	213.740931	213.7397571911869	CCD I2 on	O1	Y
[deg] Pointing Dec	-0.373484	-0.3461734787010295	CCD I3 on	Y	Y
[deg] Pointing Roll	61.477238	61.63385367326683	CCD S0 on	N	N
[mm] SIM focus pos	-0.684267	-0.6828225247311905	CCD S1 on	Y	Y
[mm] SIM defocus	0	0.001444936568705701	CCD S2 on	Y	Y
[mm] SIM translation stage pos	-190.132523	-190.1425803651734	CCD S3 on	Y	Y
[mm] SIM translation stage offset	0	0.01005778216563158	CCD S4 on	N	N
[s] Observation start time (MET)	440615310.184000	440614934.24766	CCD S5 on	N	N
Observation start date	2011-12-18T17:07:24	2011-12-18T17:02:14	Number of optional ACIS chips dropped	0	0
[s] Observation end time (MET)	440631977.184000	440632993.72362	On-chip summing requested	N	N
Observation end date	2011-12-18T21:45:11	2011-12-18T22:03:13	Subarray requested	NONE	NONE
Read mode	TIMED	TIMED	Alternating exposures requested	N	N
			[s] Primary exposure time	0.000000	3.1

2.3 Aspect



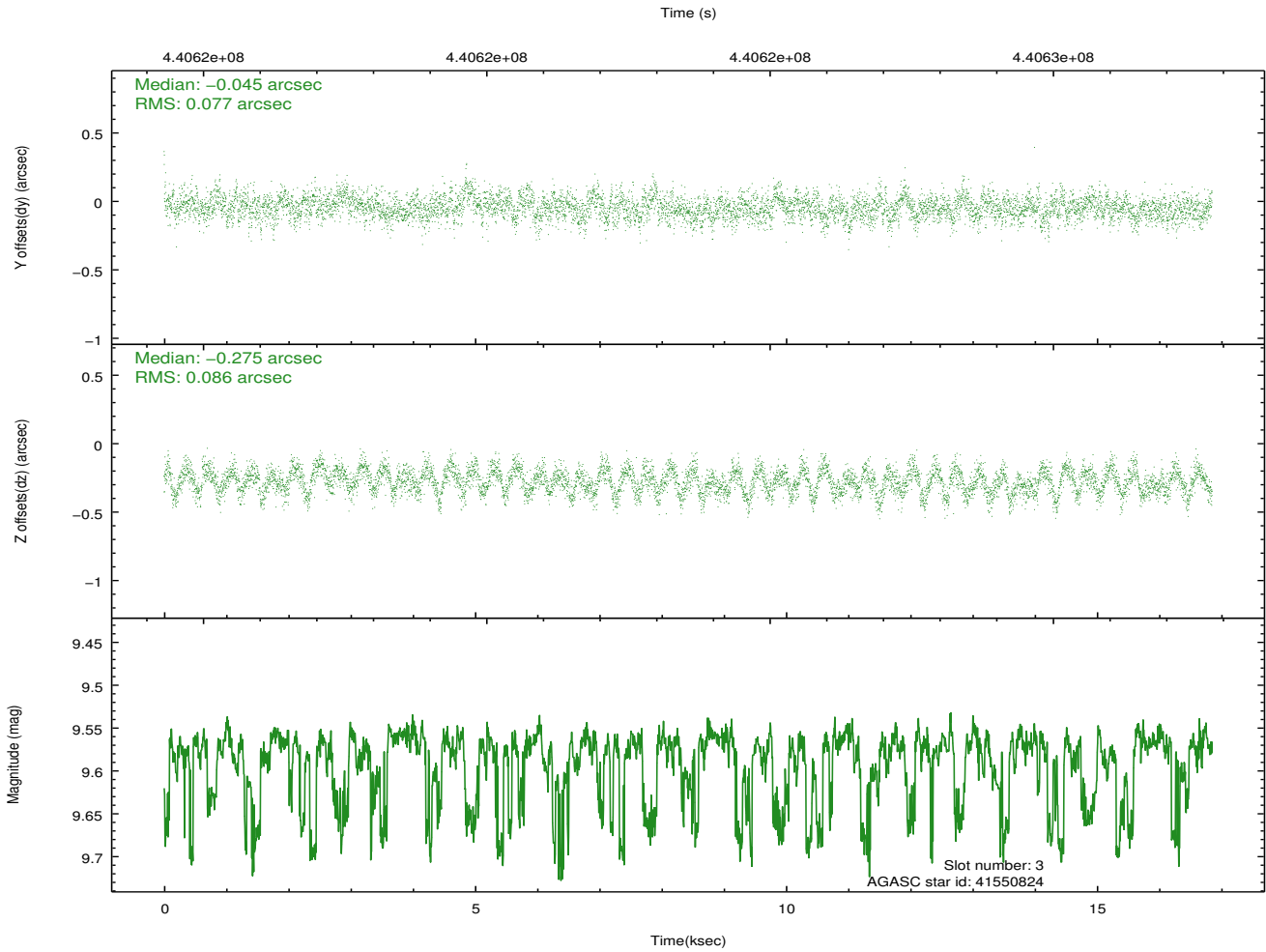
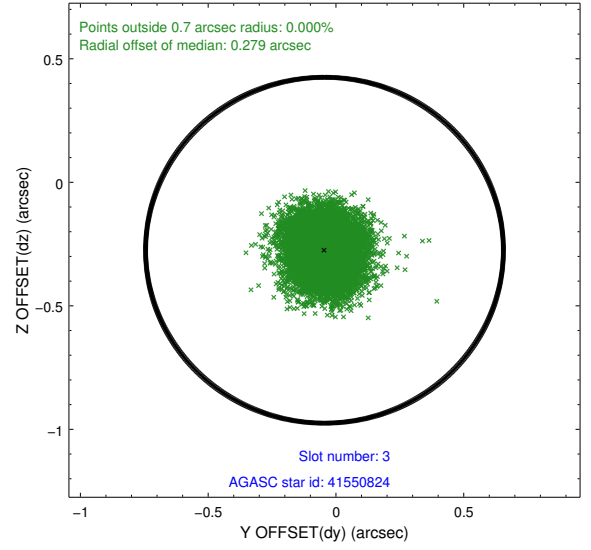
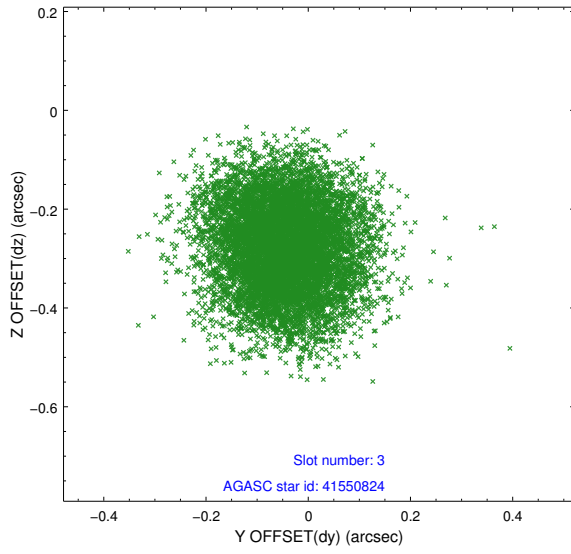


Slot Statistics

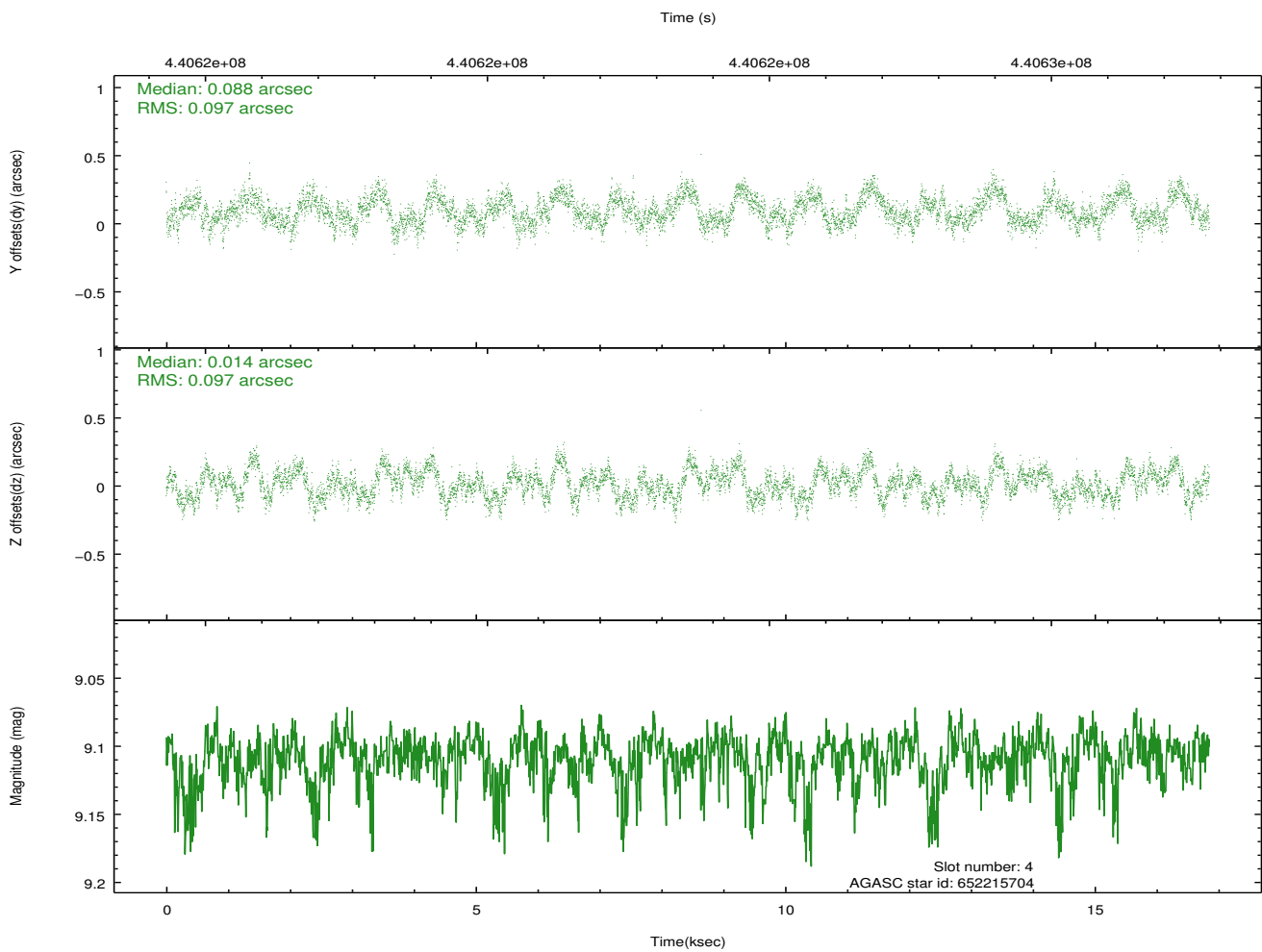
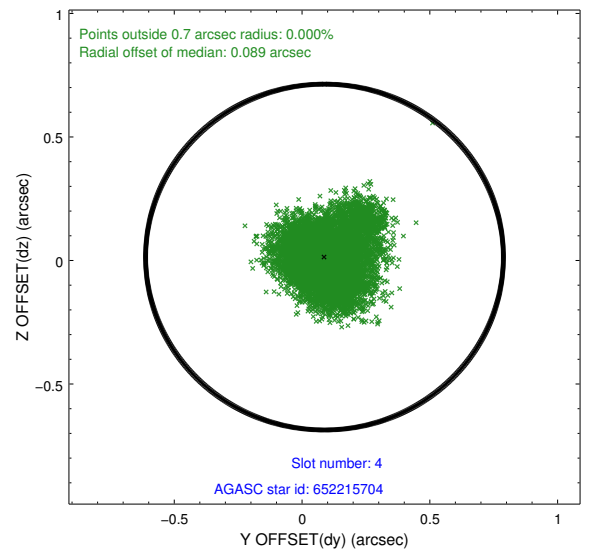
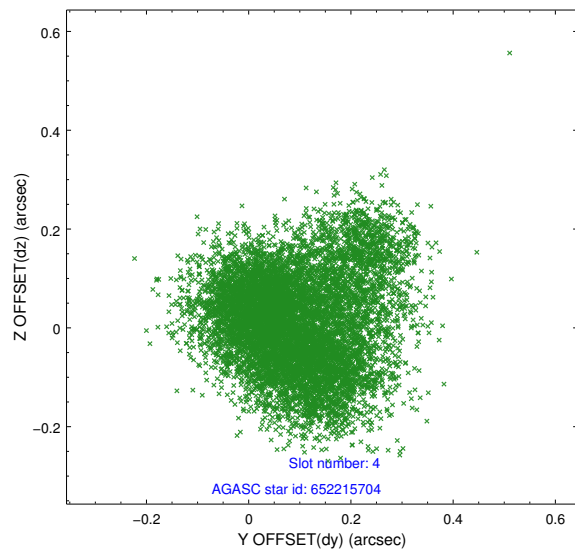
slot	status	id	mag	n_pts	med_dy	med_dz	dr1	dr2	ra	dec	mean_y	mean_z
0	FID	ACIS-S-2	6.90	4110	-0.056	-0.018	0.008	0.013	0.000000	0.000000	-767.36	-1738.49
1	FID	ACIS-S-4	6.98	4107	0.200	0.032	0.007	0.012	0.000000	0.000000	2146.11	169.70
2	FID	ACIS-S-5	7.01	4111	-0.175	-0.005	0.010	0.016	0.000000	0.000000	-1819.95	163.73
3	GUIDE	41550824	9.58	8156	-0.045	-0.275	0.125	0.197	213.709216	0.254022	1930.36	1179.29
4	GUIDE	652215704	9.11	8217	0.088	0.014	0.147	0.234	213.594661	-0.601169	-970.72	71.48
5	GUIDE	652223856	9.12	8212	-0.178	0.200	0.122	0.201	214.256332	-0.079315	1815.59	-1125.70
6	GUIDE	652224488	6.07	8221	0.090	-0.053	0.094	0.161	213.419957	-0.845464	-2044.07	200.55
7	GUIDE	652223976	10.31	7961	0.029	0.140	0.247	0.412	214.287184	-0.125851	1722.33	-1302.09

2.4 Star Slots

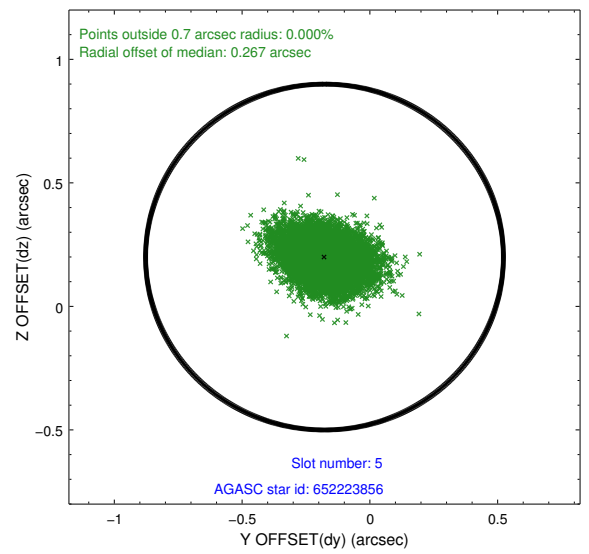
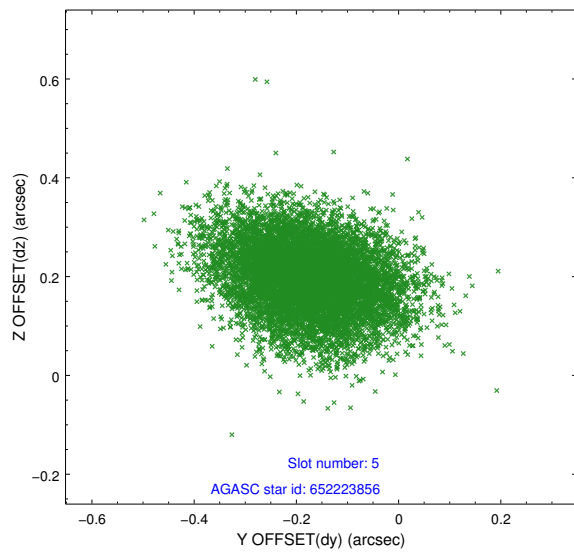
2.4.1 Slot 3



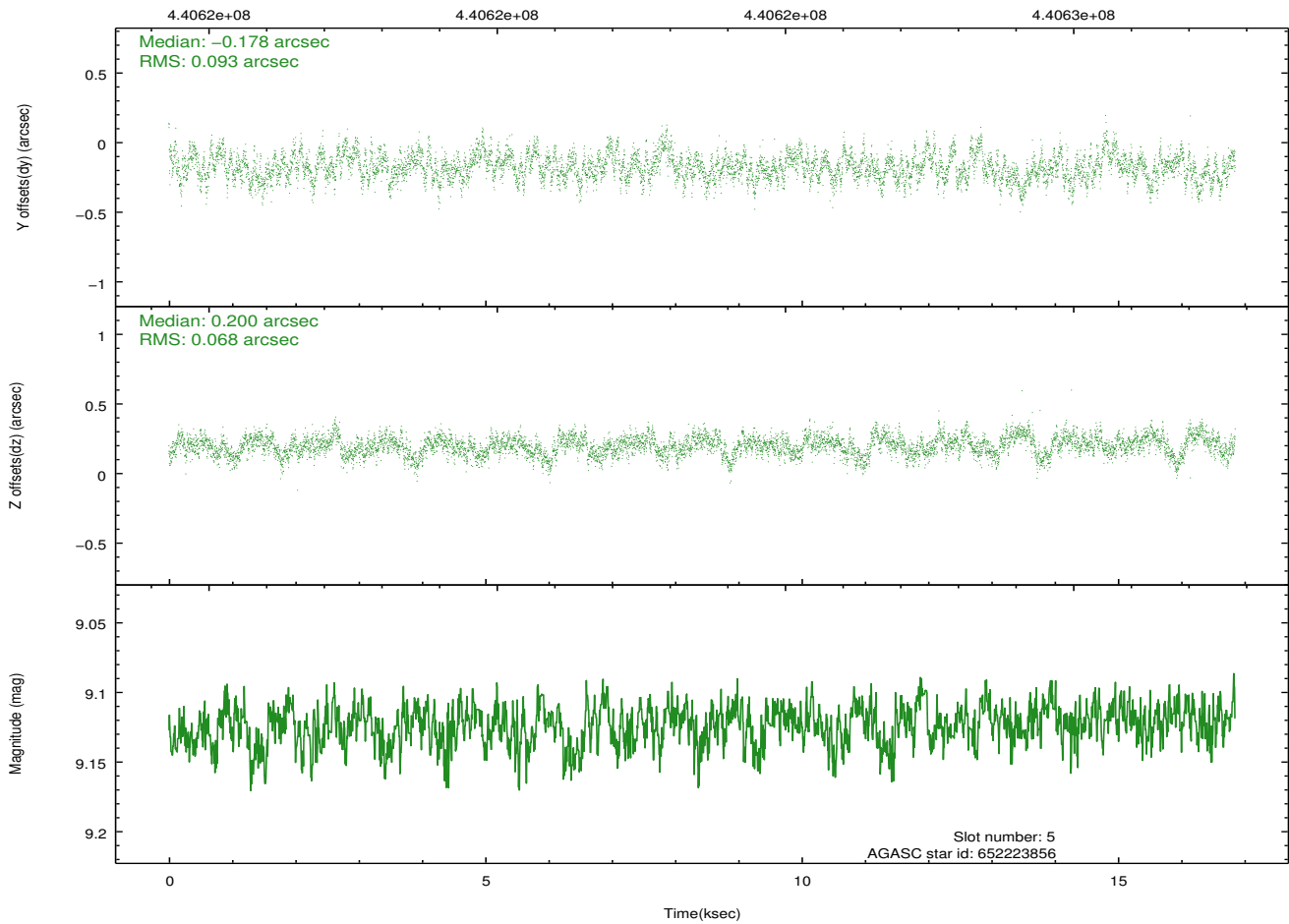
2.4.2 Slot 4



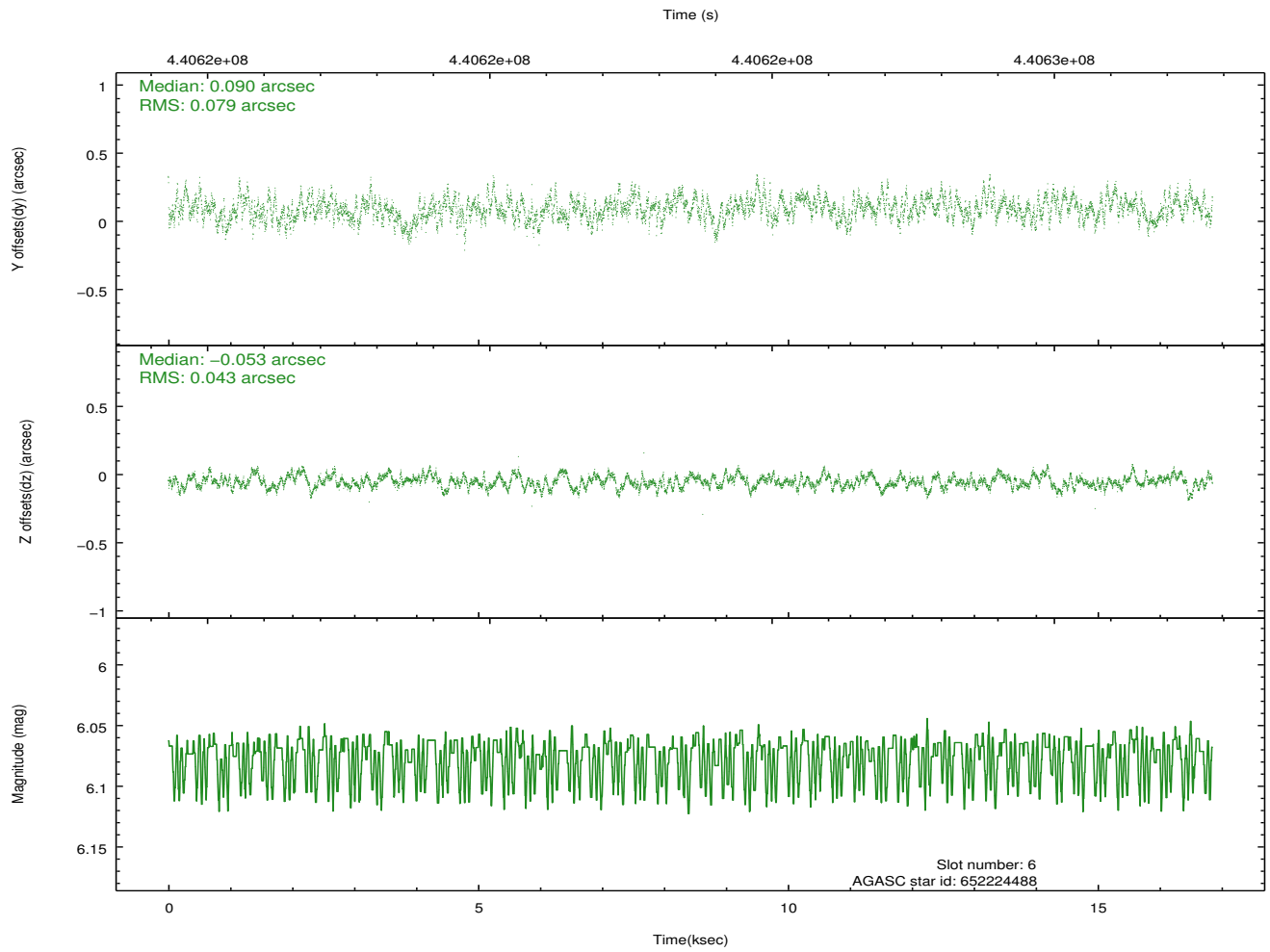
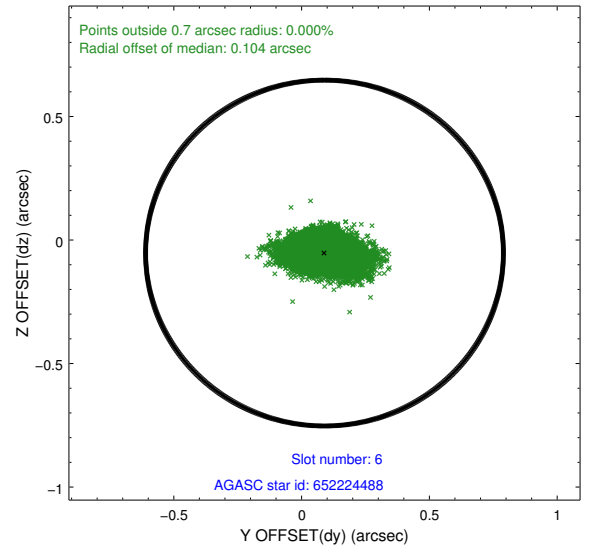
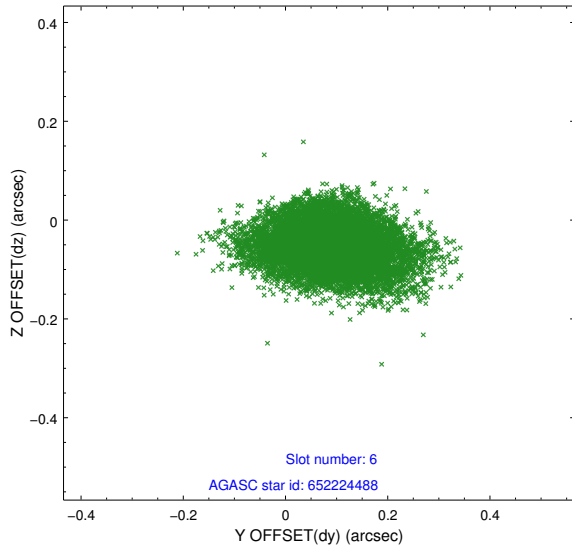
2.4.3 Slot 5



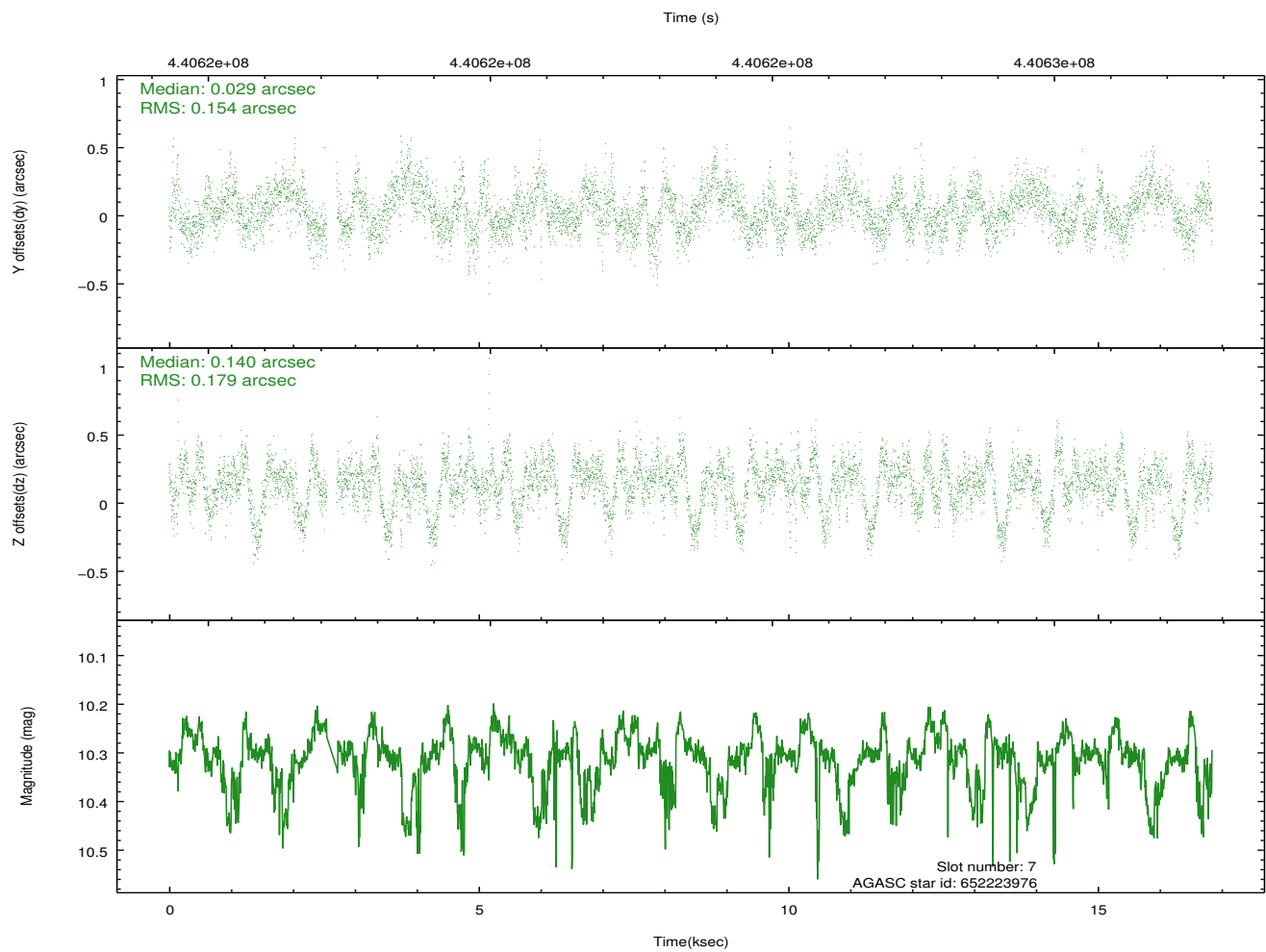
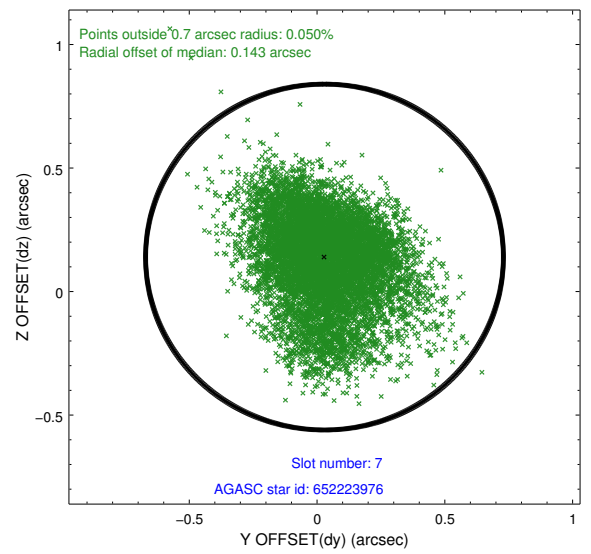
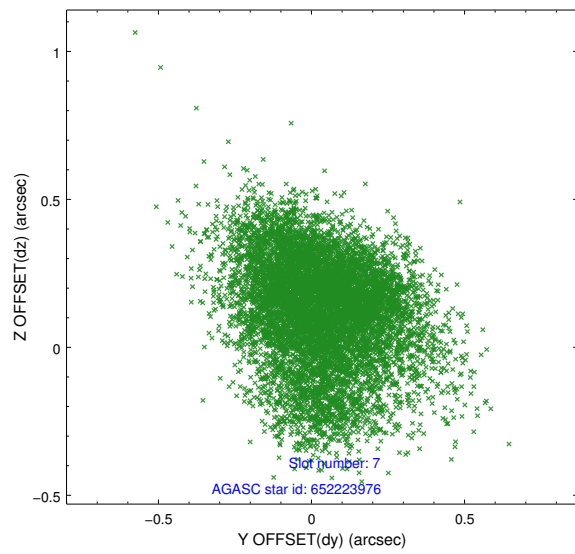
Time (s)



2.4.4 Slot 6

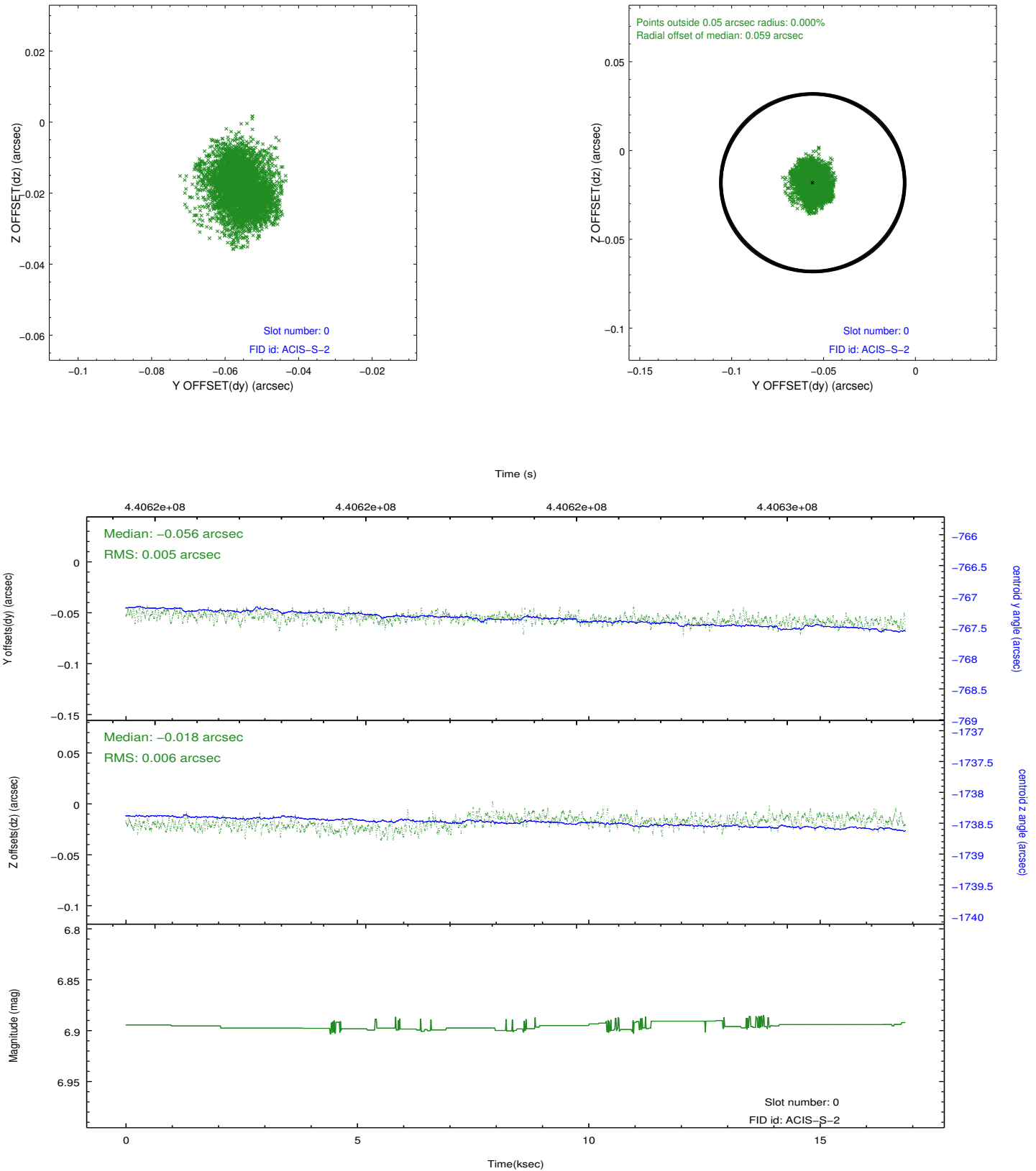


2.4.5 Slot 7

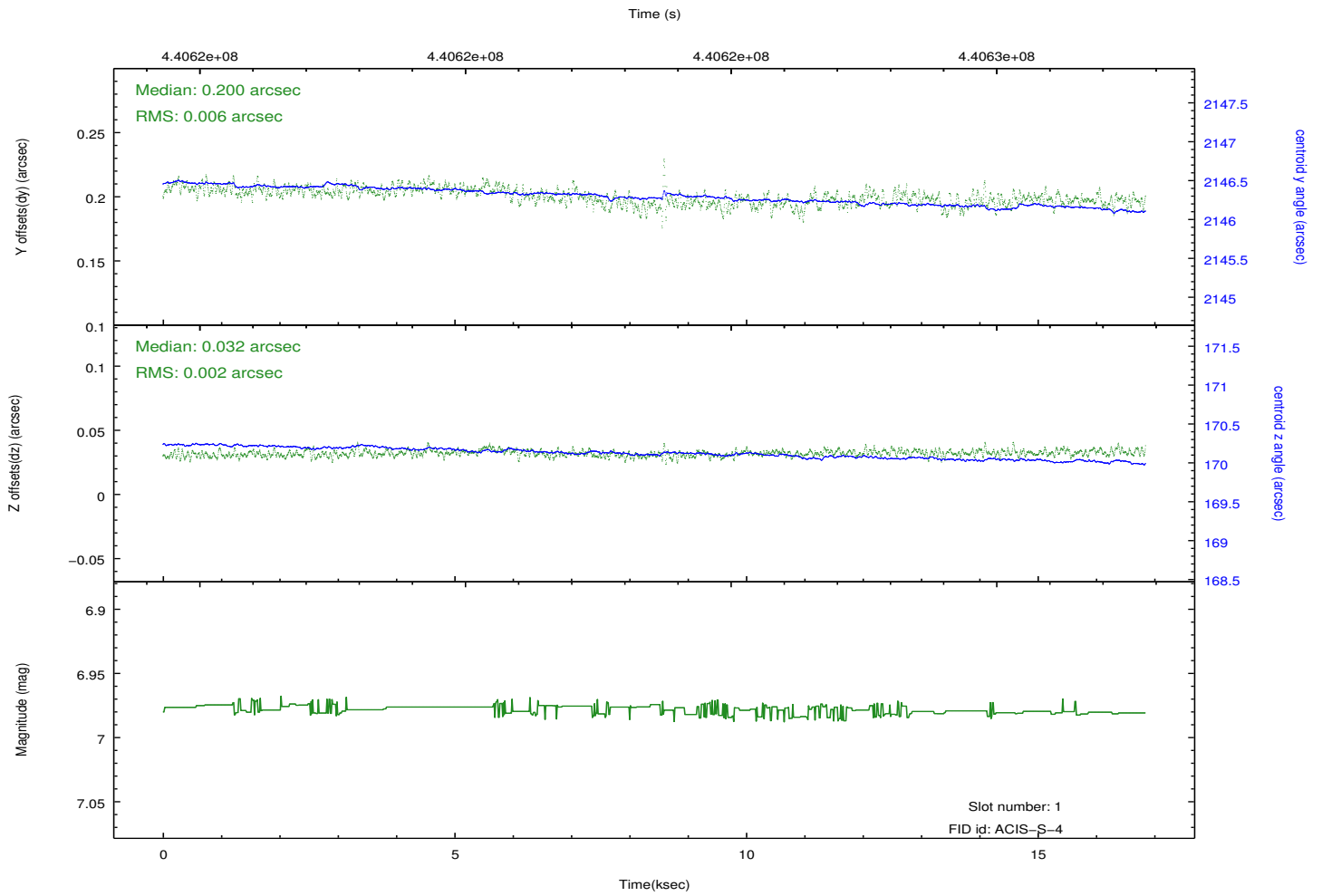
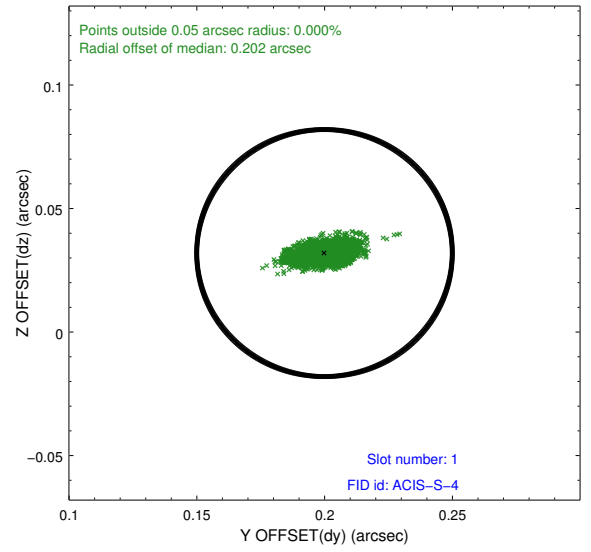
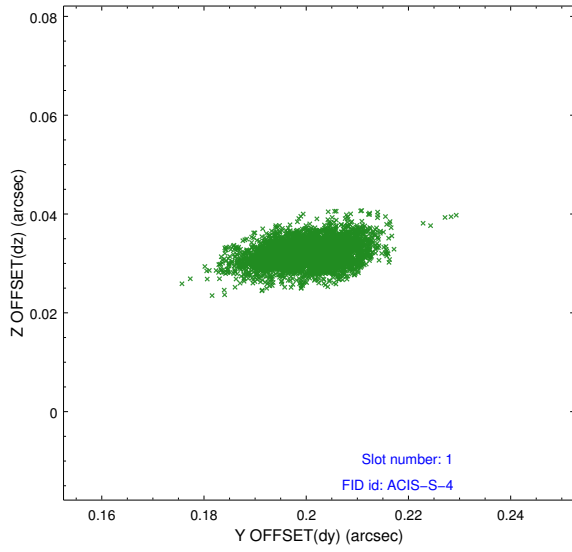


2.5 FID Slots

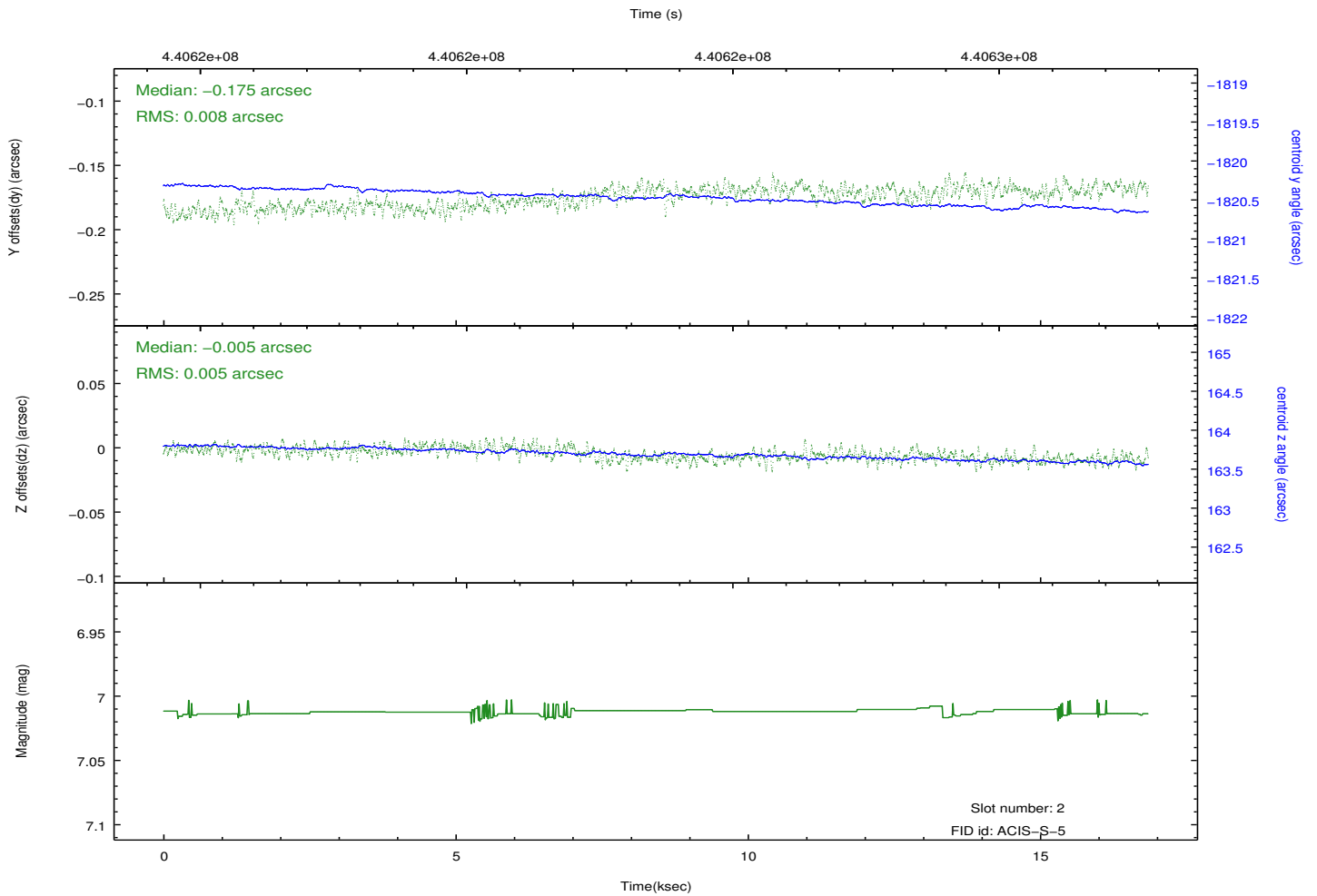
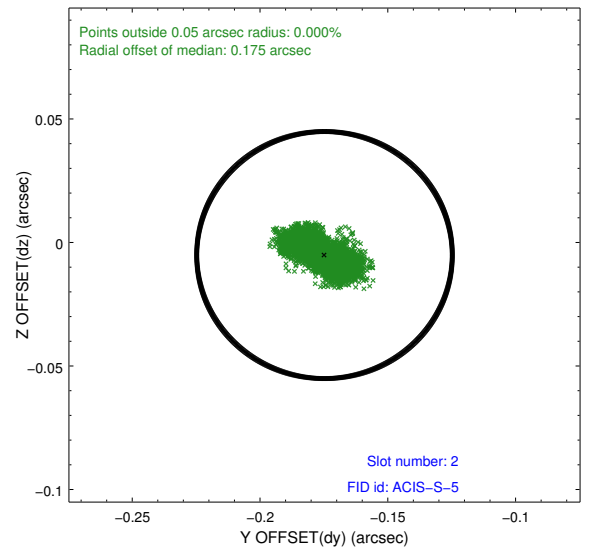
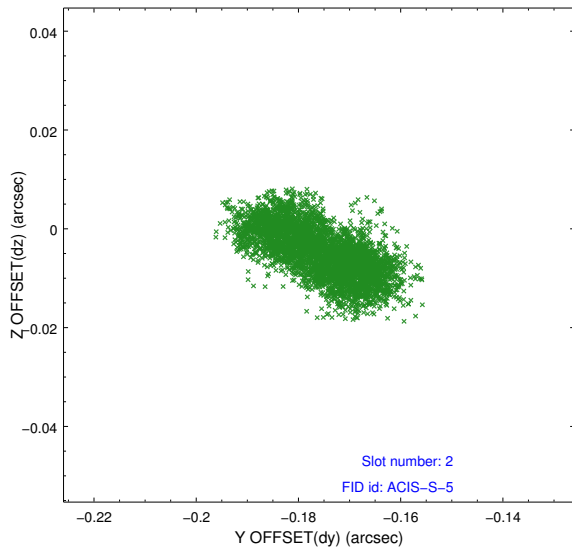
2.5.1 Slot 0



2.5.2 Slot 1



2.5.3 Slot 2



A Summary

A.1 Status

V&V Scientist	Beth Sundheim
V&V Date (YYYY-MM-DD)	2012.02.29
V&V Edition	1
V&V Disposition and Status	OK
V&V Charge Time	16.445100720644

A.2 Comments