

V&V Reference Report

L2 ASCDS Version : 8.4.3

Observation 12921 - L2 Version 2
Chandra X-Ray Center

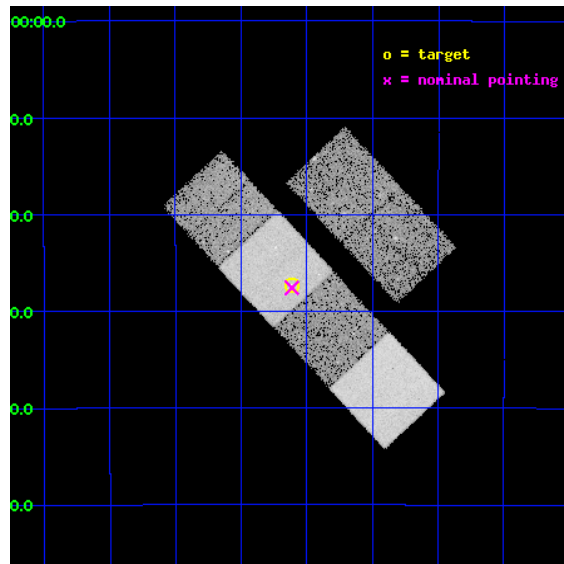
L2 Processing Date : Feb 18 2012

Contents

1	Front	2
2	OBI	3
2.1	OBI	3
2.1.1	Images	3
2.1.2	Bias	3
2.1.3	Parameters	4
2.1.4	Events	4
2.2	Compared Parameters	5
2.3	Aspect	6
2.4	Star Slots	9
2.4.1	Slot 3	9
2.4.2	Slot 4	10
2.4.3	Slot 5	11
2.4.4	Slot 6	12
2.4.5	Slot 7	13
2.5	FID Slots	14
2.5.1	Slot 0	14
2.5.2	Slot 1	15
2.5.3	Slot 2	16
A	Summary	17
A.1	Status	17
A.2	Comments	17

1 Front

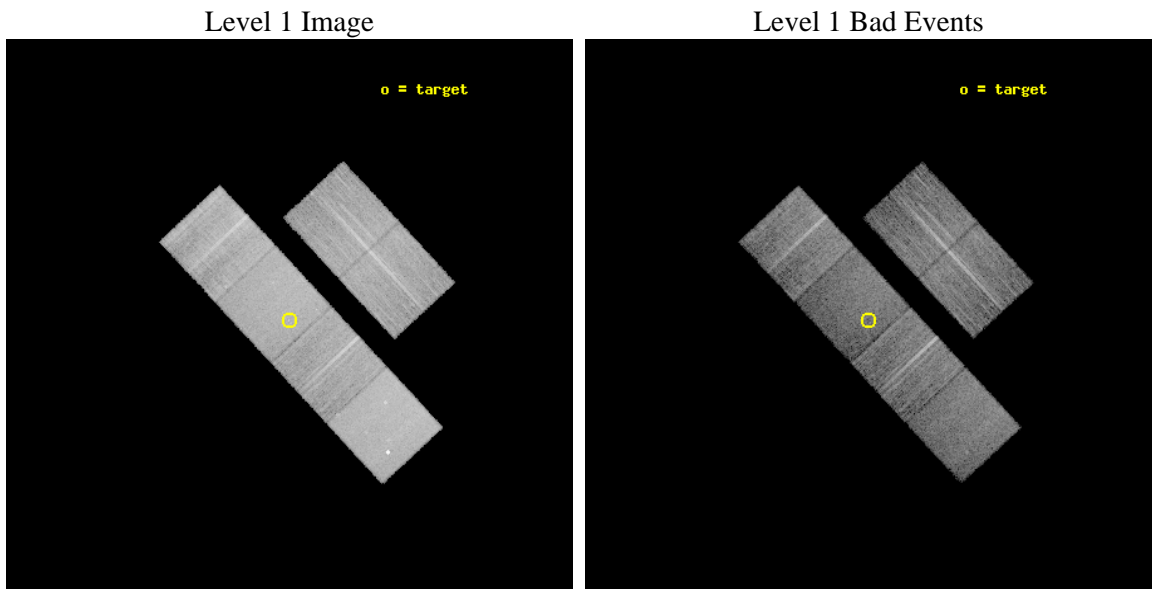
seq_num	900954	Sequence number
obs_id	12921	Observation id
title	The differing environments of dark gamma-ray bursts	Proposal title
observer	Dr Andrew Levan	Principal investigator
object	GRB 110709B	Source name
dtycycle	0	
cycle	P	events from which exps? Prim/Second/Both
ra_targ	164.654458	Observer's specified target RA [deg]
dec_targ	-23.454972	Observer's specified target Dec [deg]
ra_nom	164.65345375273	Nominal RA [deg]
dec_nom	-23.459714881582	Nominal Dec [deg]
roll_nom	227.04131464408	Nominal Roll [deg]
revision	2	Processing version of data
ontime	15052.799943984	Sum of GTIs [s]
liveltime	14862.192327385	Livetime [s]
ontime2	15052.799943984	Sum of GTIs [s]
ontime3	15052.799943984	Sum of GTIs [s]
ontime5	15052.799943984	Sum of GTIs [s]
ontime6	15052.799943984	Sum of GTIs [s]
ontime7	15052.799943984	Sum of GTIs [s]
ontime8	15052.799943984	Sum of GTIs [s]
l2events	156241	Number of level 2 events



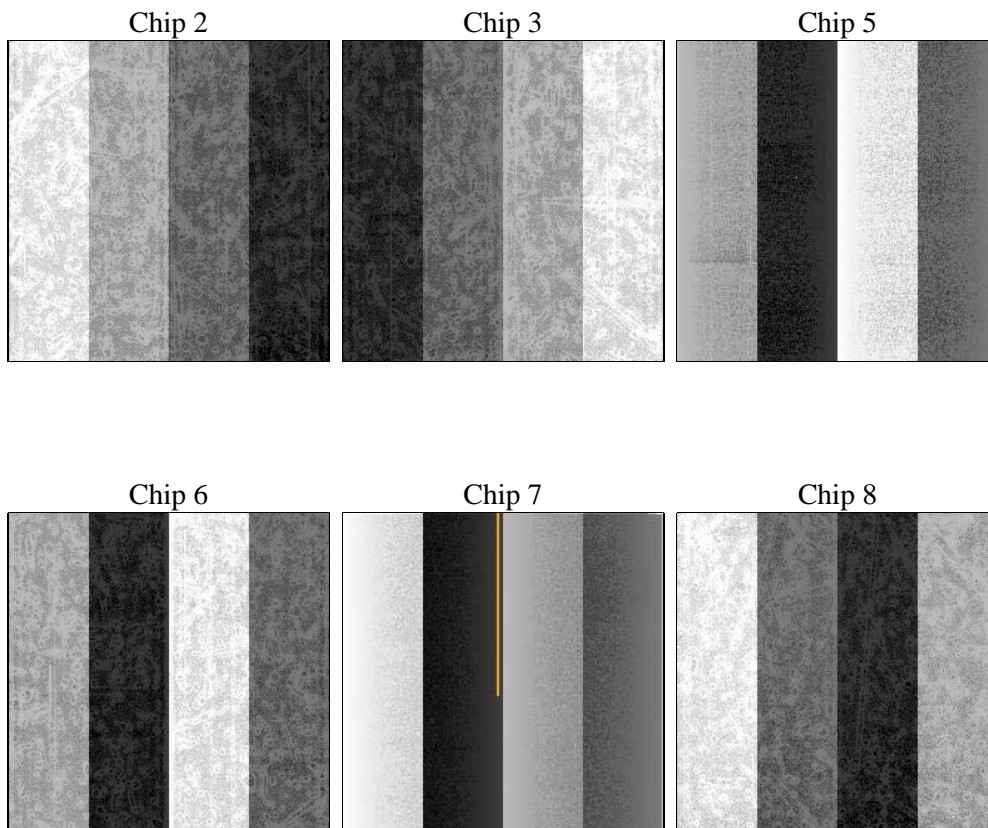
2 OBI

2.1 OBI

2.1.1 Images



2.1.2 Bias



2.1.3 Parameters

obi_num	0	Obi number	sched_exp_time	15000.000000	[s] Scheduled observation exposure time
ascdsver	8.4.3	Processing system revision	ontime	15052.799943984	Sum of GTIs [s]
caldbver	4.4.8	 	ontime2	15052.799943984	Sum of GTIs [s]
date	2012-02-18T17:51:18	Date and time of file creation	ontime3	15052.799943984	Sum of GTIs [s]
revision	2	Processing version of data	ontime5	15052.799943984	Sum of GTIs [s]
			ontime6	15052.799943984	Sum of GTIs [s]
			ontime7	15052.799943984	Sum of GTIs [s]
			ontime8	15052.799943984	Sum of GTIs [s]
			l1events	658092	Number of level 1 events

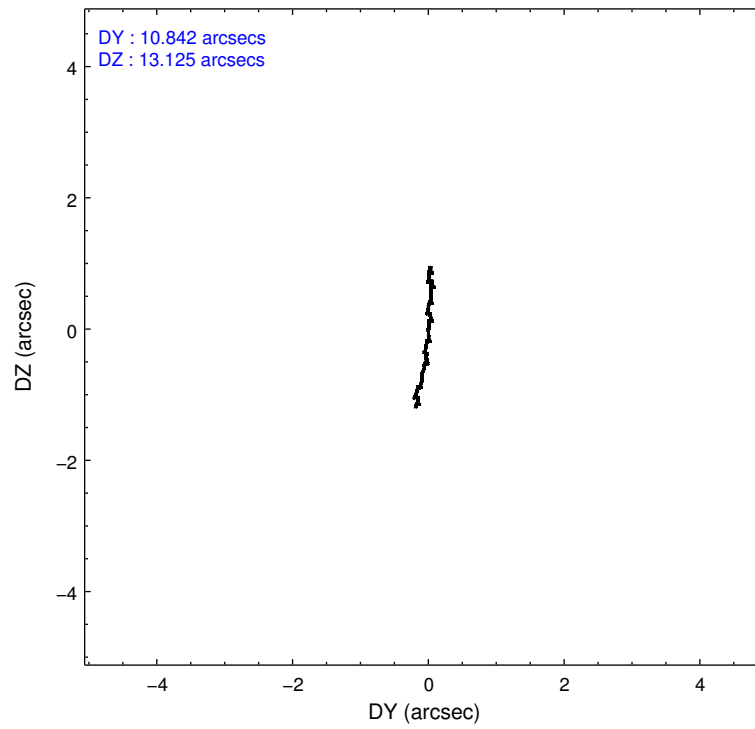
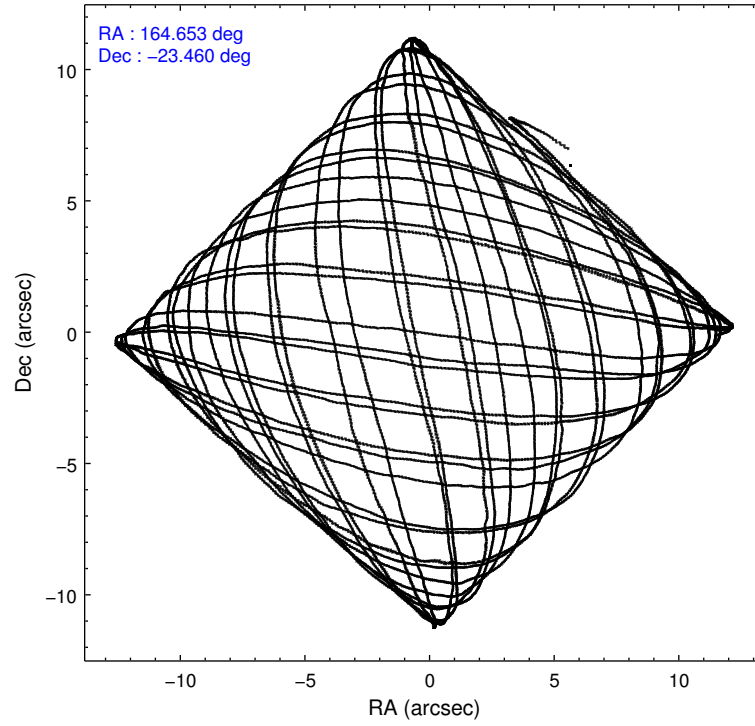
2.1.4 Events

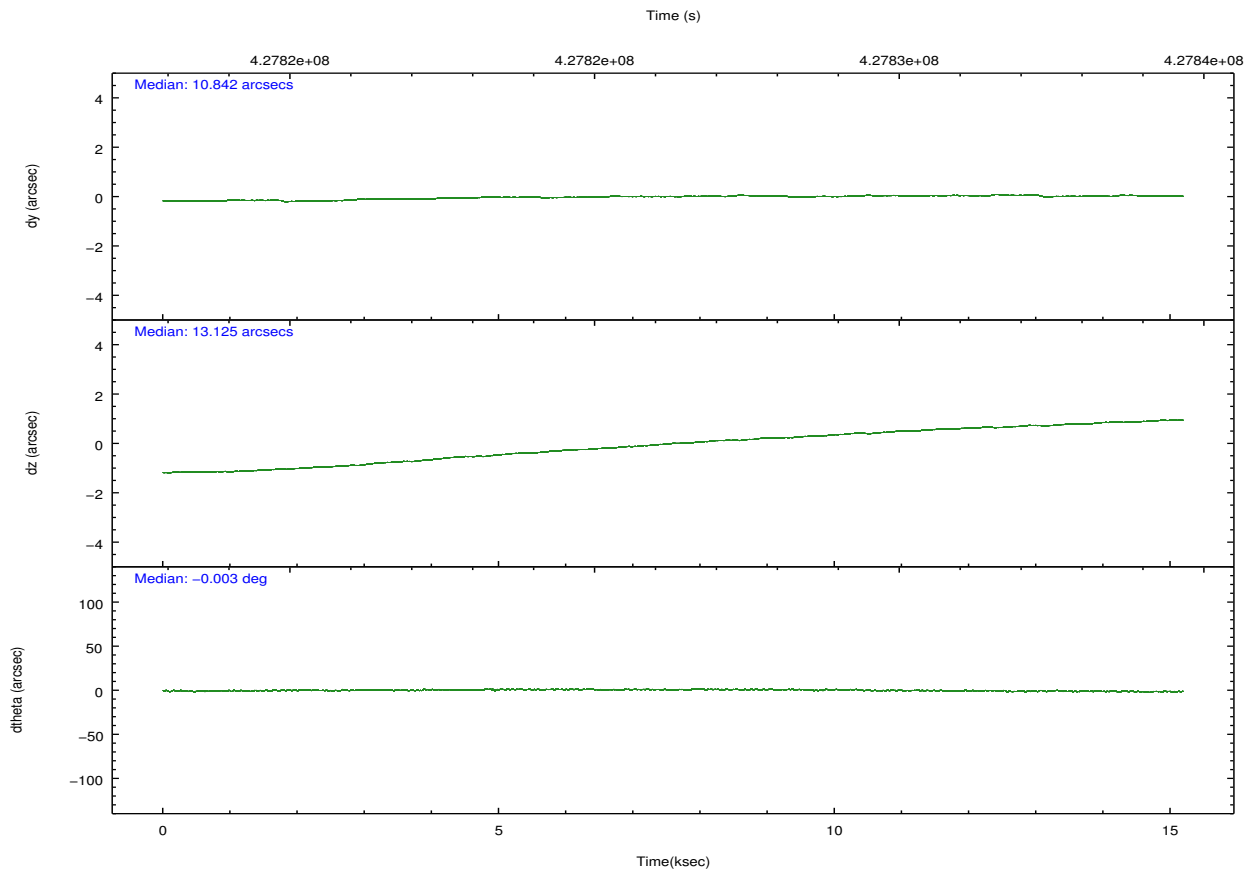
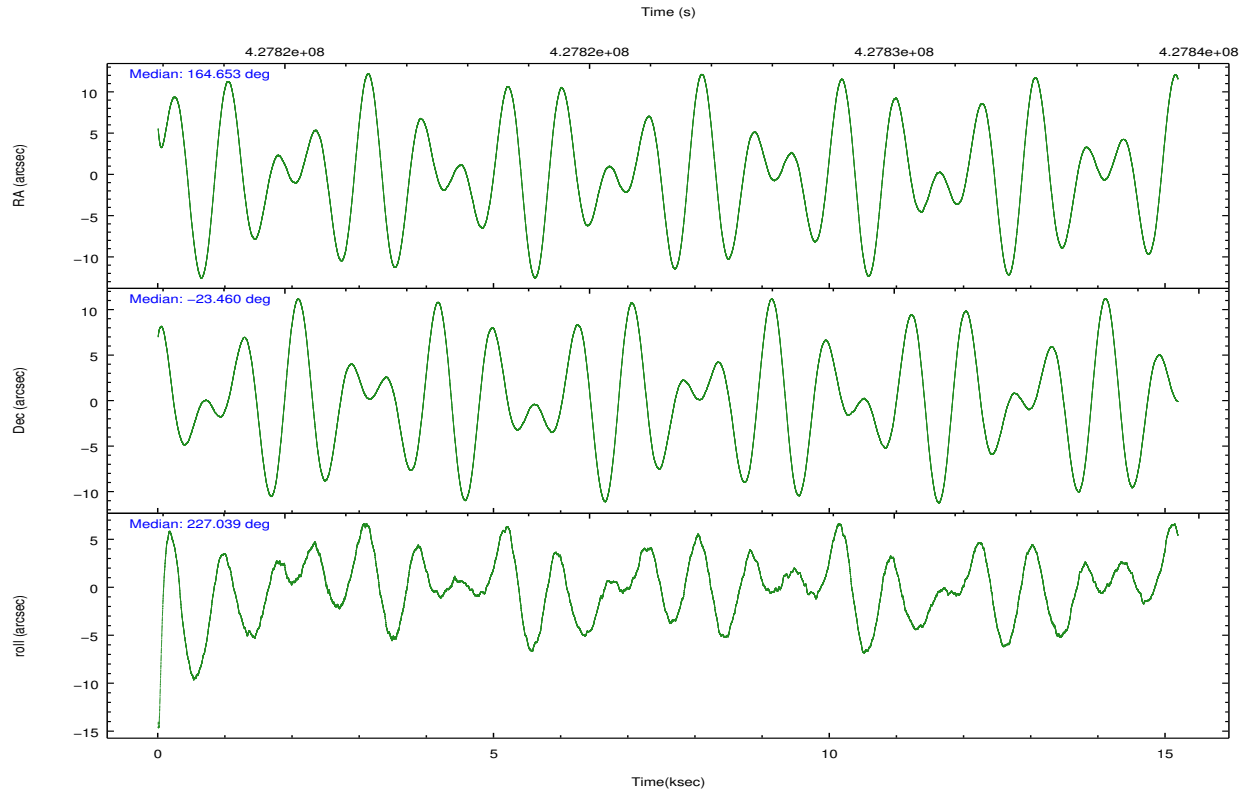
	ccd 2	ccd 3	ccd 5	ccd 6	ccd 7	ccd 8		ccd 2	ccd 3	ccd 5	ccd 6	ccd 7	ccd 8
level 1 events	93714	89300	144440	91706	118449	120483	grade 0 events	3734	3619	6418	3705	4970	9313
rejected events	83412	79345	73540	80987	65304	88640		3%	4%	4%	4%	4%	7%
rejected %	89%	88%	50%	88%	55%	73%	grade 1 events	64	58	315	40	123	93
								0%	0%	0%	0%	0%	0%
							grade 2 events	2548	2177	22036	2359	10907	7479
								2%	2%	15%	2%	9%	6%
							grade 3 events	1083	1053	2531	1107	4597	3436
								1%	1%	1%	1%	3%	2%
							grade 4 events	979	1045	2504	1057	4646	3211
								1%	1%	1%	1%	3%	2%
							grade 5 events	3643	4333	10783	4405	12143	6421
								3%	4%	7%	4%	10%	5%
							grade 6 events	1965	2061	37424	2492	28032	8408
								2%	2%	25%	2%	23%	6%
							grade 7 events	79698	74954	62429	76541	53031	82122
								85%	83%	43%	83%	44%	68%

2.2 Compared Parameters

Parameter	Planned	Actual	Parameter	Planned	Actual
Instrument	ACIS	ACIS	Obspar format version number	7	7
Detector	ACIS-235678	ACIS-235678	Obspar file type	PREDICTED	ACTUAL
Grating	NONE	NONE	Obspar update status	NONE	UPDATED
Data mode	FAINT	FAINT	CCD I0 on	N	N
Observation mode	POINTING	POINTING	CCD I1 on	N	N
[deg] Pointing RA	164.659707	164.6534537527285	CCD I2 on	O1	Y
[deg] Pointing Dec	-23.433003	-23.45971488158229	CCD I3 on	O2	Y
[deg] Pointing Roll	226.887193	227.0413146440821	CCD S0 on	N	N
[mm] SIM focus pos	-0.684267	-0.6828225247311905	CCD S1 on	Y	Y
[mm] SIM defocus	0	0.001444936568705701	CCD S2 on	Y	Y
[mm] SIM translation stage pos	-190.132523	-190.1400660498719	CCD S3 on	Y	Y
[mm] SIM translation stage offset	0	0.00754346686406393	CCD S4 on	Y	Y
[s] Observation start time (MET)	427818880.184000	427817770.35065	CCD S5 on	N	N
Observation start date	2011-07-23T14:33:34	2011-07-23T14:16:10	Number of optional ACIS chips dropped	0	0
[s] Observation end time (MET)	427833880.184000	427834768.43904	On-chip summing requested	N	N
Observation end date	2011-07-23T18:43:34	2011-07-23T18:59:28	Subarray requested	NONE	NONE
Read mode	TIMED	TIMED	Alternating exposures requested	N	N
			[s] Primary exposure time	0.000000	3.2

2.3 Aspect



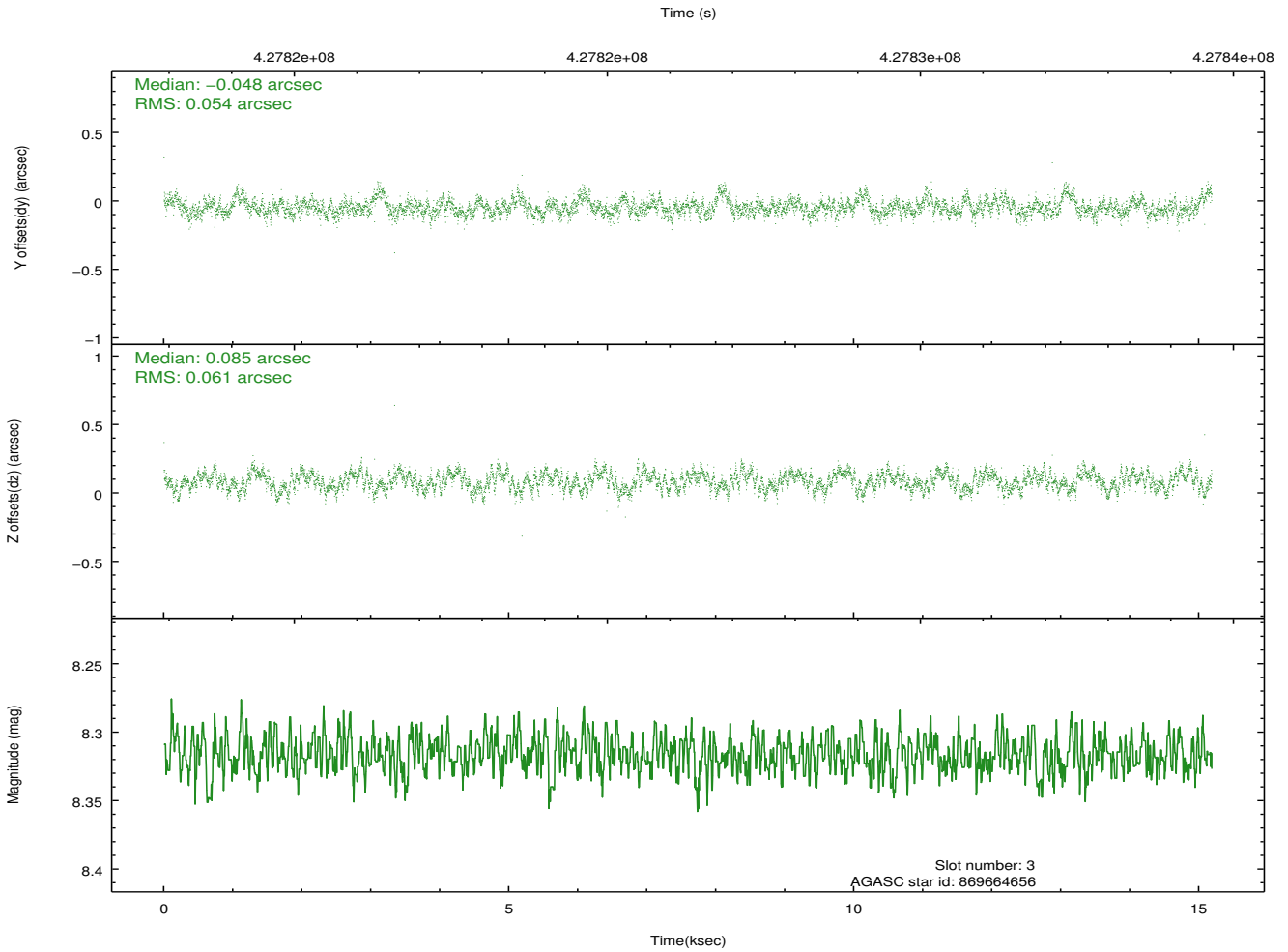
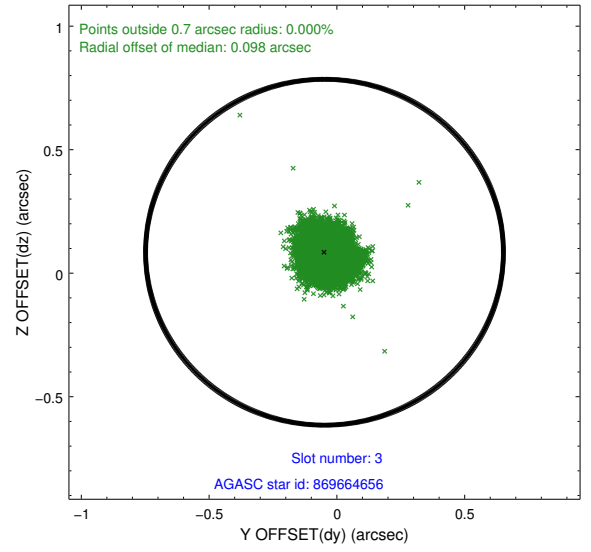
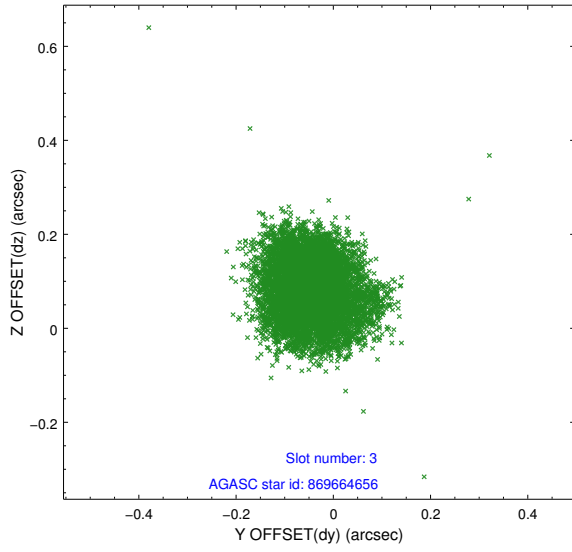


Slot Statistics

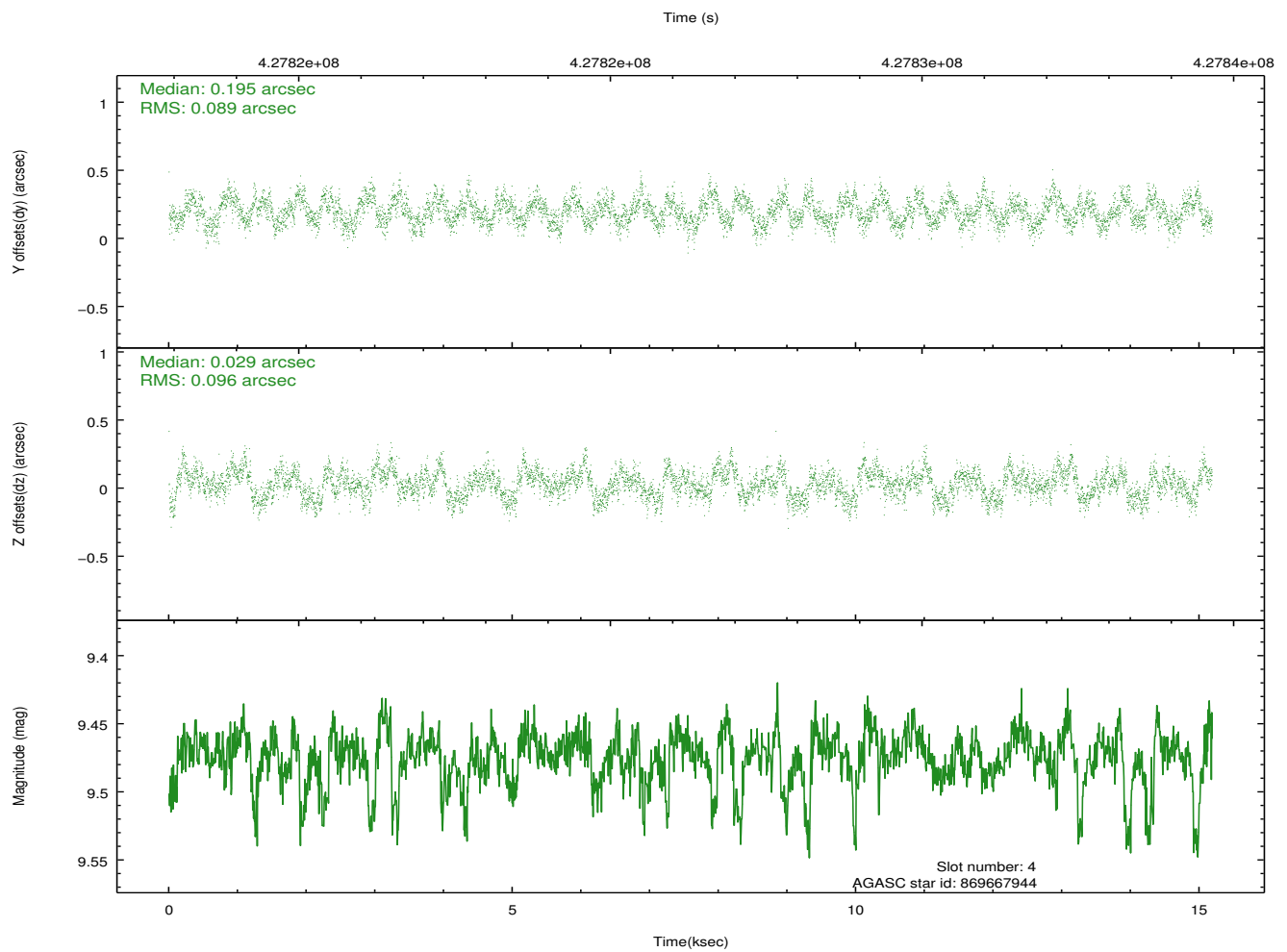
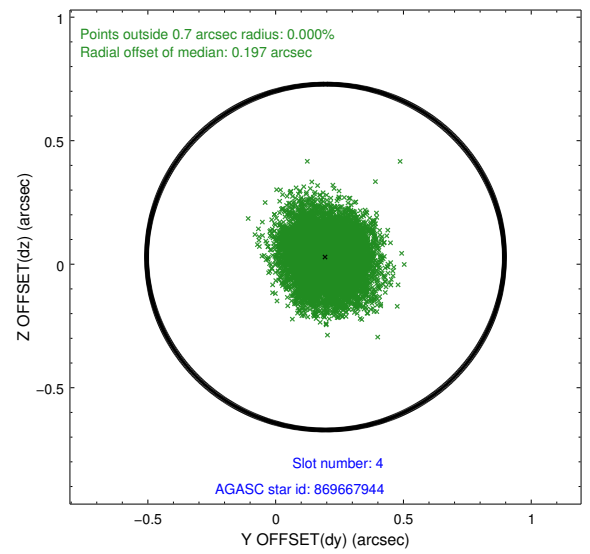
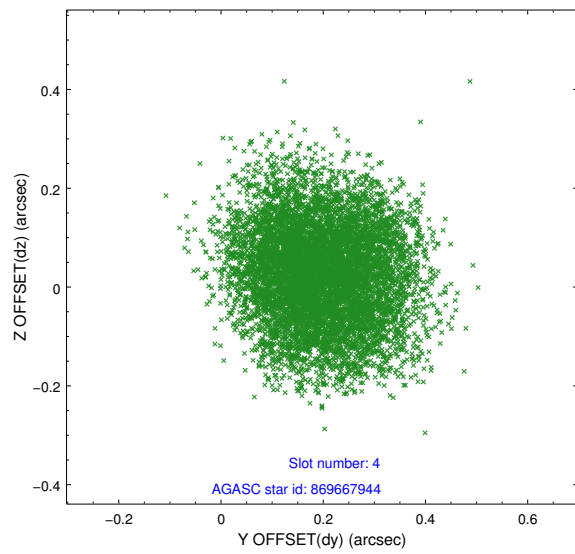
slot	status	id	mag	n_pts	med_dy	med_dz	dr1	dr2	ra	dec	mean_y	mean_z
0	FID	ACIS-S-2	6.99	3704	-0.055	-0.060	0.011	0.024	0.000000	0.000000	-763.75	-1734.41
1	FID	ACIS-S-4	7.08	3704	0.203	0.042	0.008	0.014	0.000000	0.000000	2149.68	173.81
2	FID	ACIS-S-5	7.12	3703	-0.180	0.026	0.010	0.021	0.000000	0.000000	-1816.30	167.87
3	GUIDE	869664656	8.32	7407	-0.048	0.085	0.087	0.138	164.771765	-23.254839	-720.29	-167.86
4	GUIDE	869667944	9.47	7385	0.195	0.029	0.142	0.220	164.227935	-23.402517	896.84	-1114.76
5	GUIDE	869669456	8.57	7406	0.062	0.035	0.060	0.096	164.454796	-24.038044	2051.34	997.25
6	GUIDE	869670072	7.83	7406	0.107	-0.237	0.064	0.105	164.642470	-24.200508	2056.40	1847.19
7	GUIDE	869799344	9.74	7398	-0.322	0.088	0.117	0.195	165.559853	-23.407471	-2092.46	2115.20

2.4 Star Slots

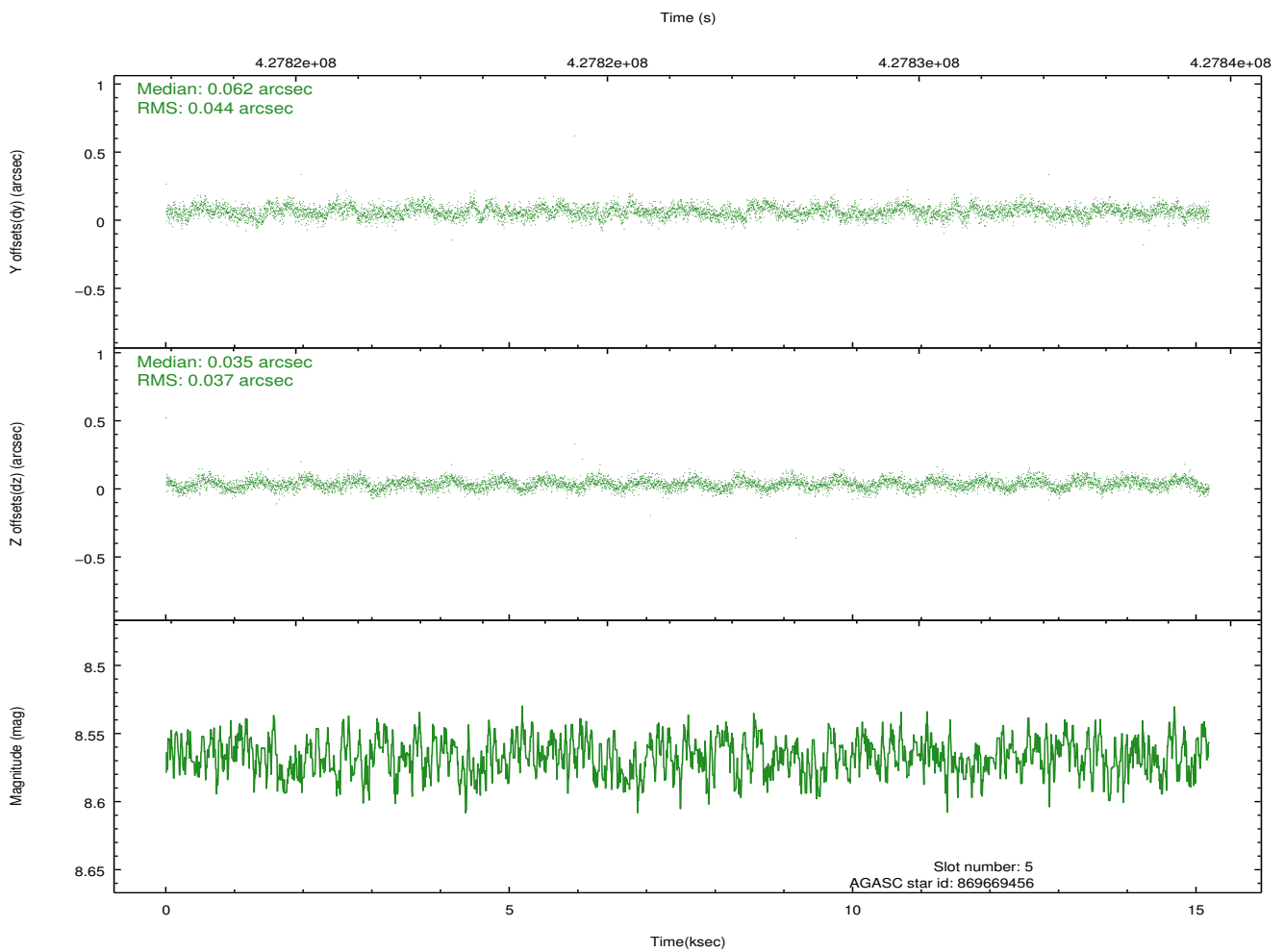
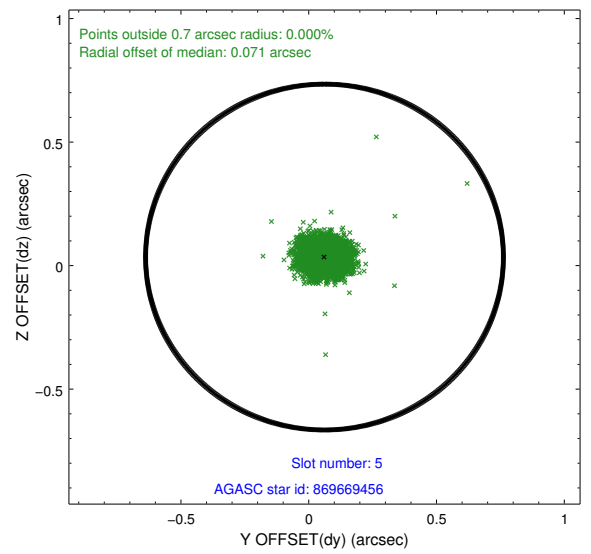
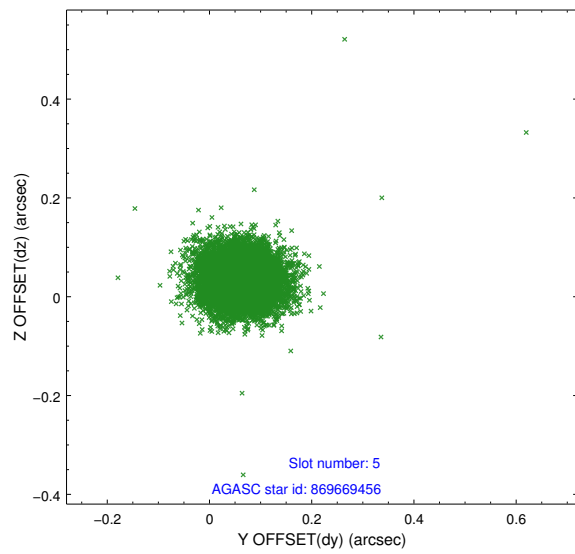
2.4.1 Slot 3



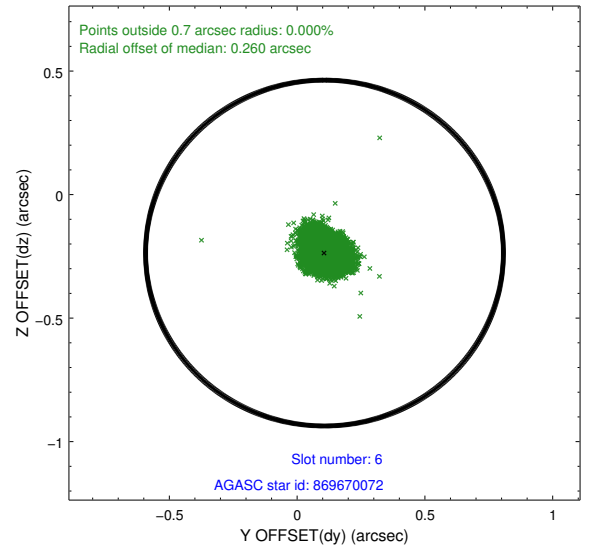
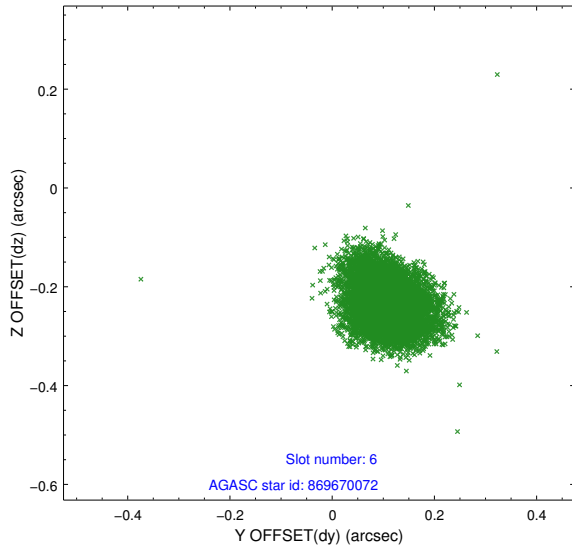
2.4.2 Slot 4



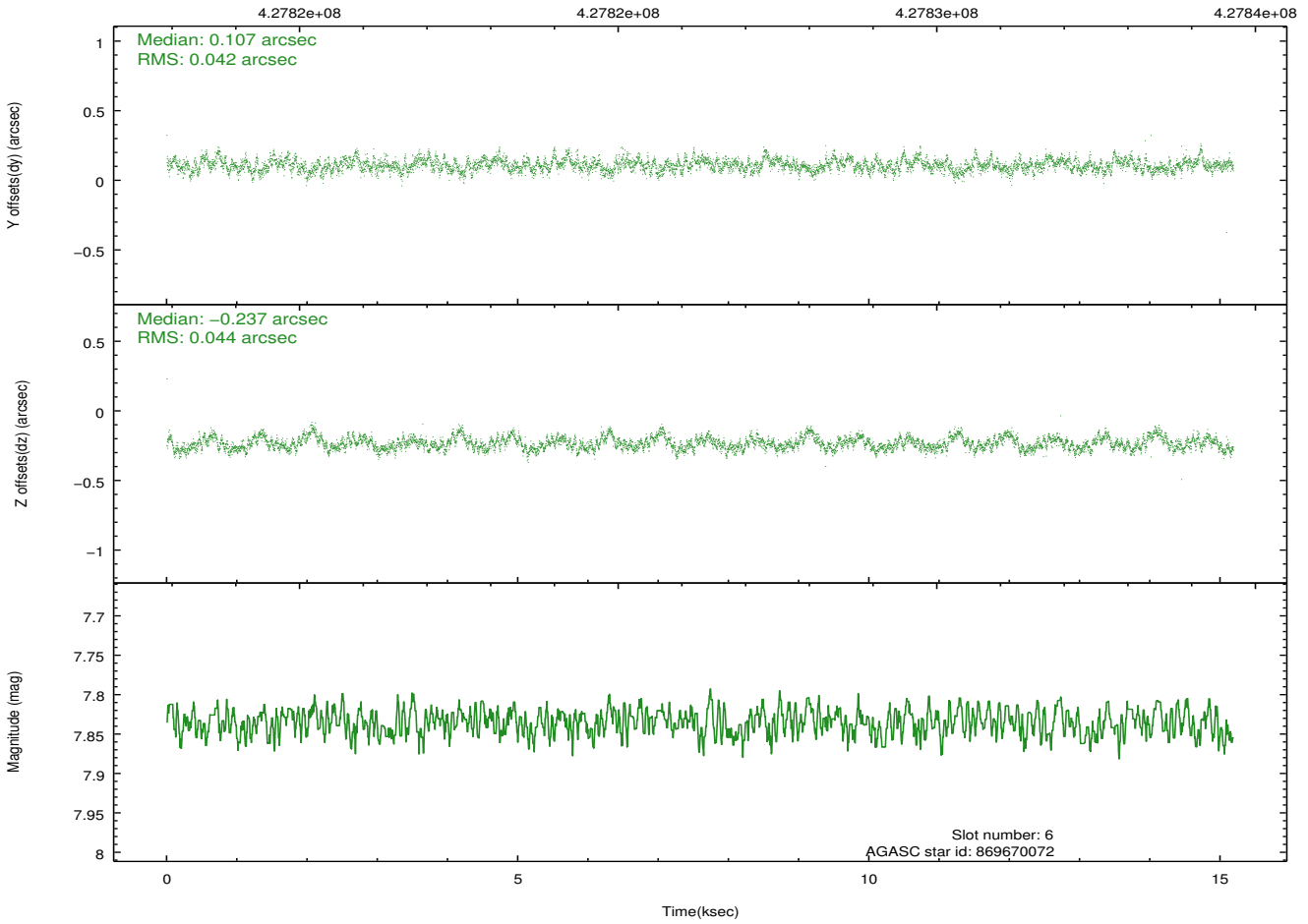
2.4.3 Slot 5



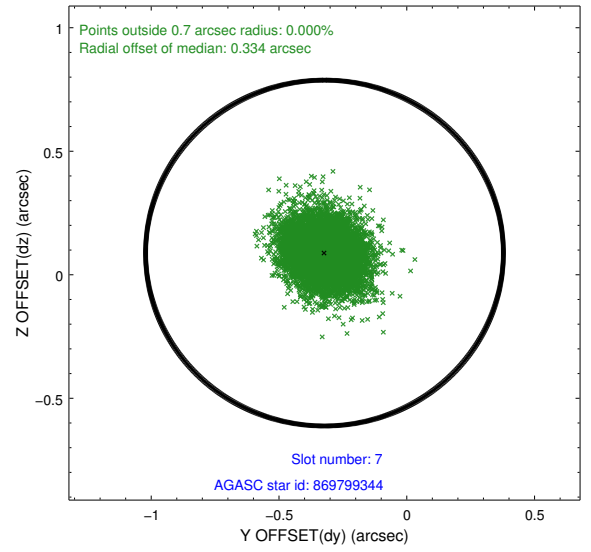
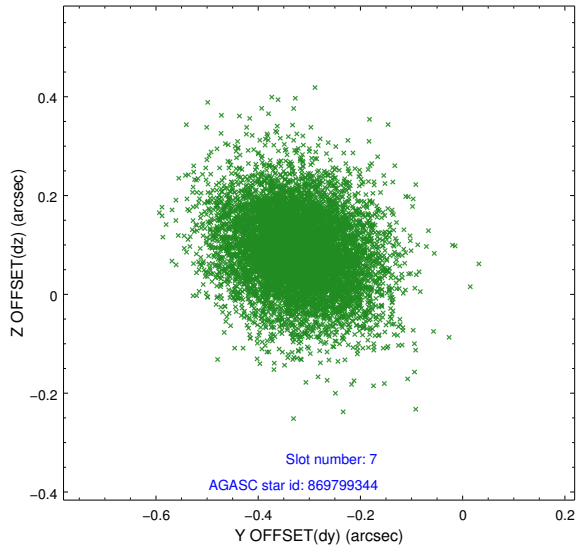
2.4.4 Slot 6



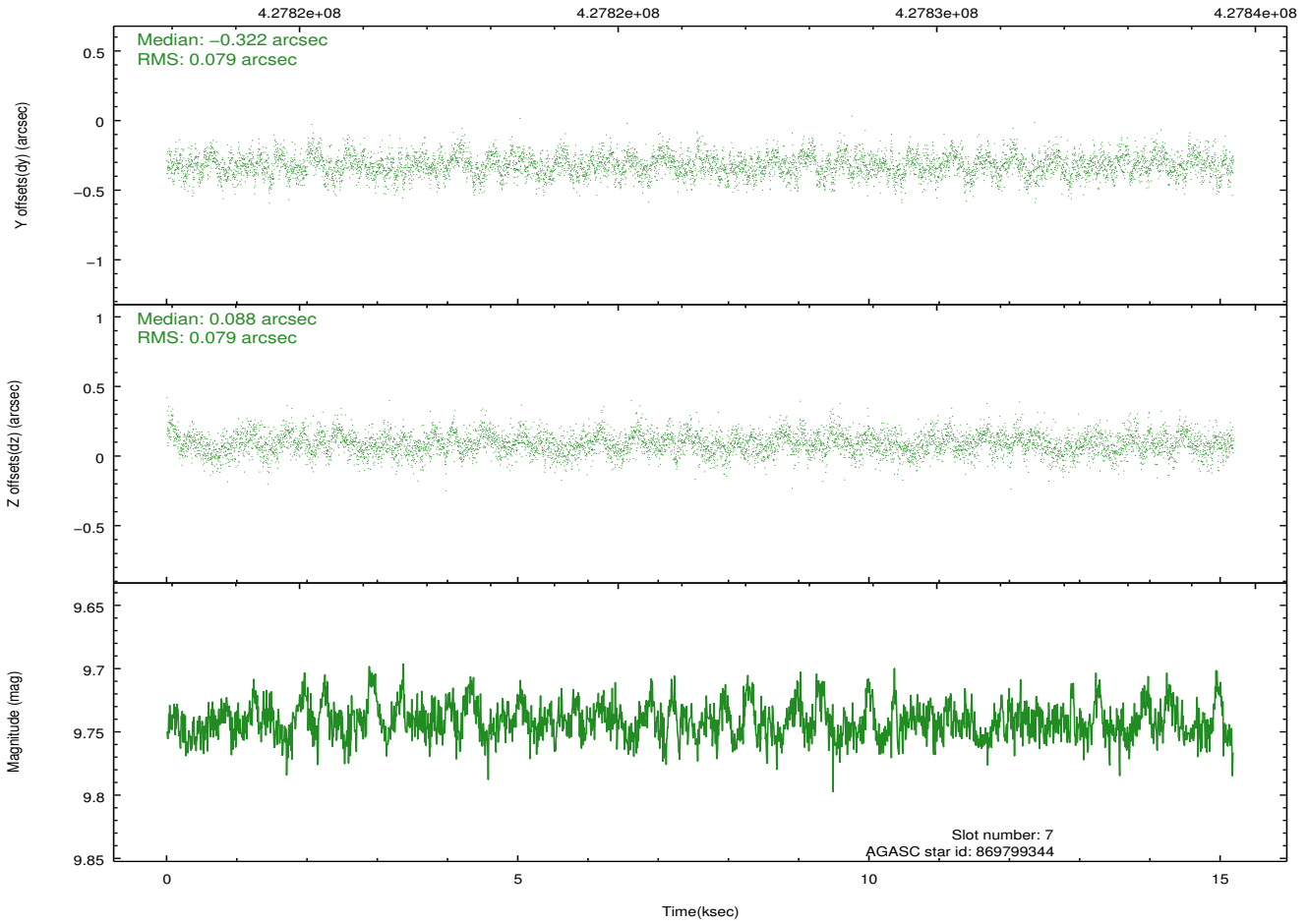
Time (s)



2.4.5 Slot 7

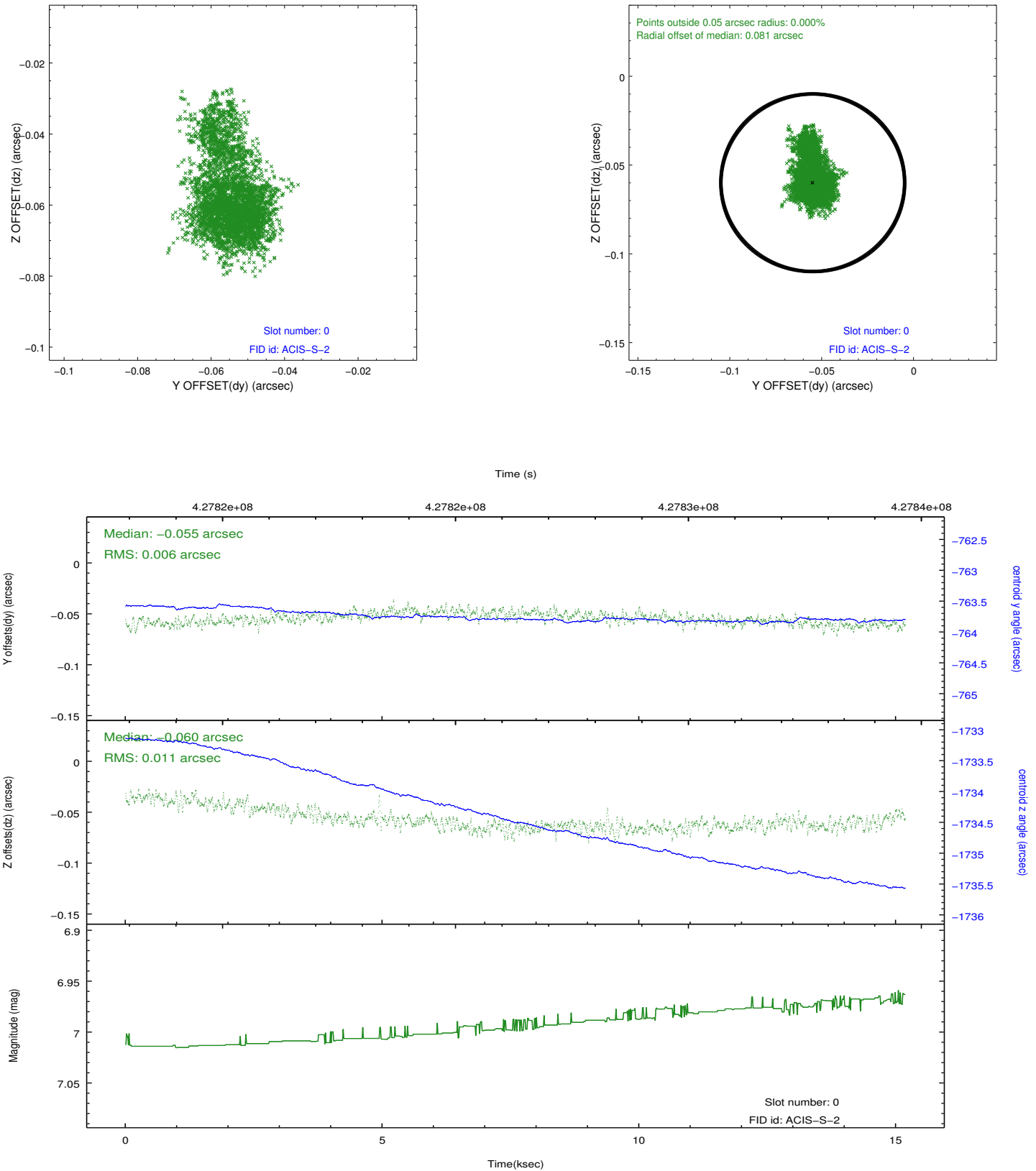


Time (s)

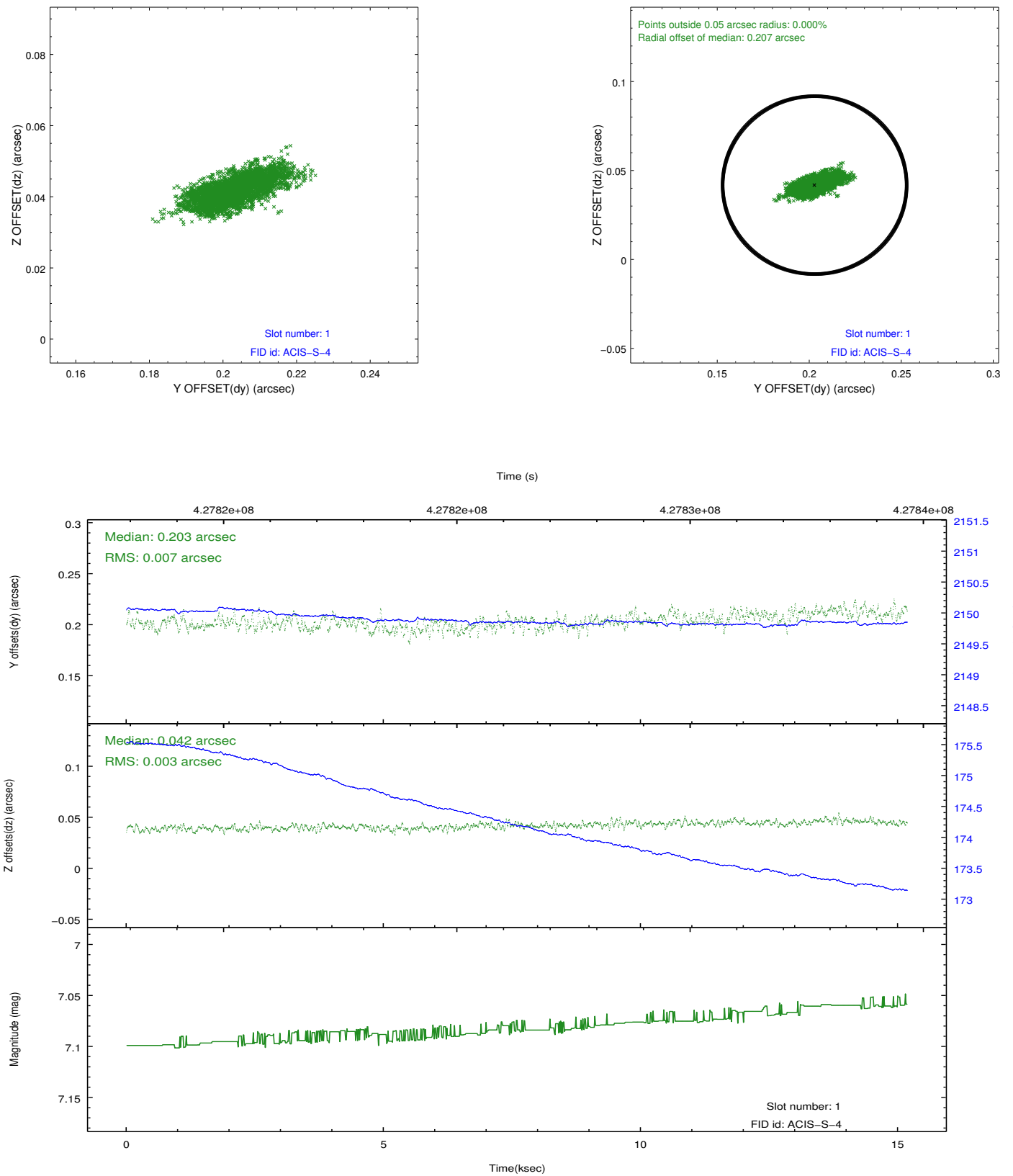


2.5 FID Slots

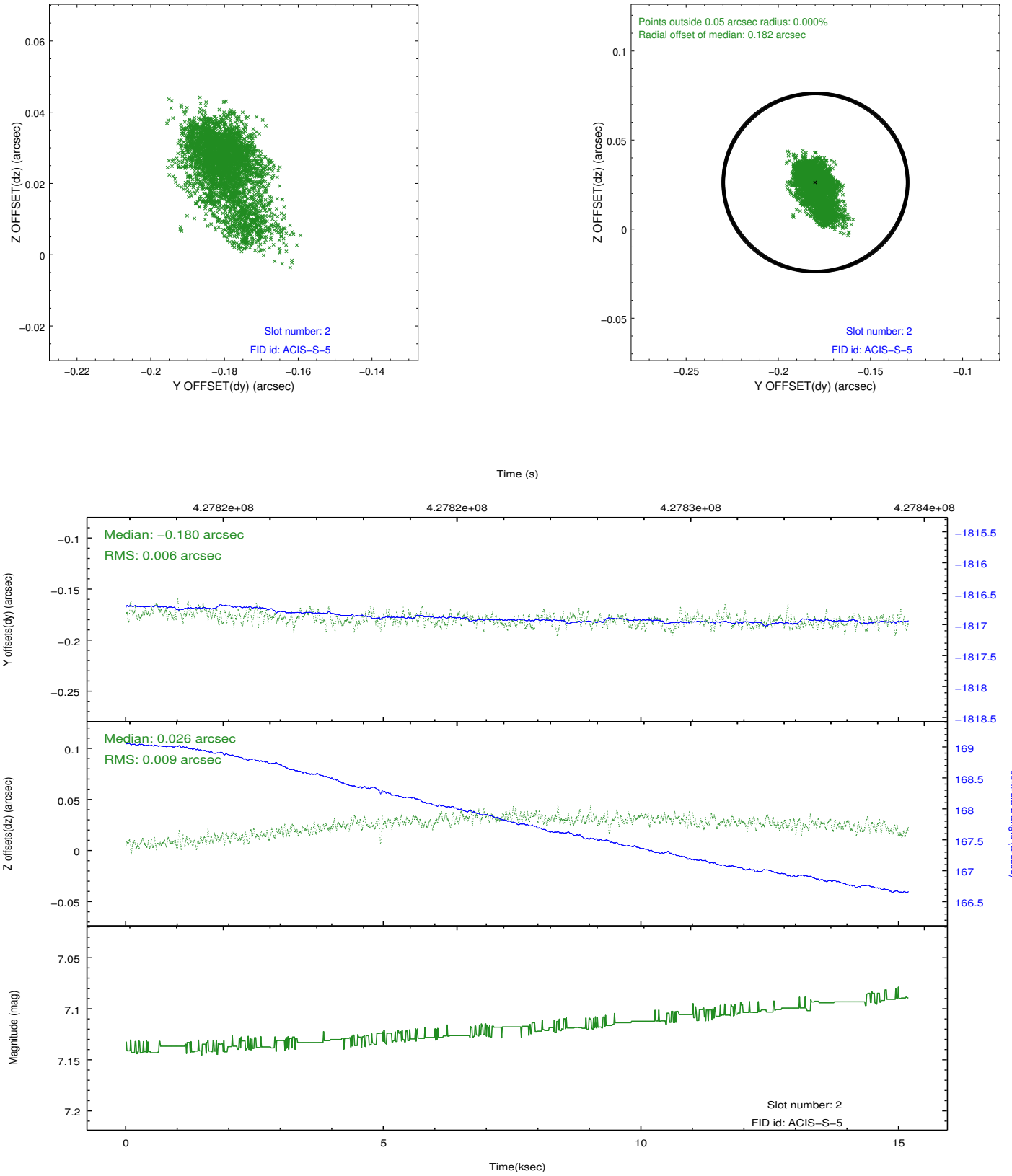
2.5.1 Slot 0



2.5.2 Slot 1



2.5.3 Slot 2



A Summary

A.1 Status

V&V Scientist	Jen Lauer
V&V Date (YYYY-MM-DD)	2012.02.21
V&V Edition	1
V&V Disposition and Status	OK
V&V Charge Time	15.052799943984

A.2 Comments

Joint proposal: HST