

# V&V Reference Report

## L2 ASCDS Version : 8.4.5

Observation 13281 - L2 Version 2  
Chandra X-Ray Center

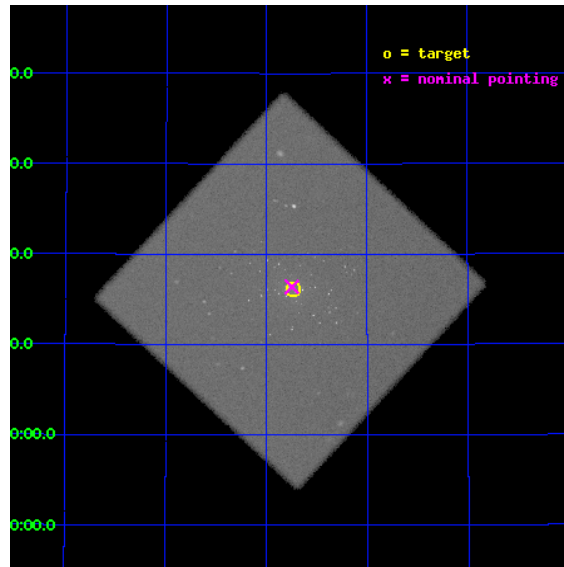
L2 Processing Date : Jul 28 2012

## Contents

<b>1</b>	<b>Front</b>	<b>2</b>
<b>2</b>	<b>OBI</b>	<b>3</b>
2.1	OBI . . . . .	3
2.1.1	Images . . . . .	3
2.1.2	Parameters . . . . .	4
2.1.3	Events . . . . .	4
2.2	Compared Parameters . . . . .	5
2.3	Aspect . . . . .	6
2.4	Star Slots . . . . .	9
2.4.1	Slot 3 . . . . .	9
2.4.2	Slot 4 . . . . .	10
2.4.3	Slot 5 . . . . .	11
2.4.4	Slot 6 . . . . .	12
2.4.5	Slot 7 . . . . .	13
2.5	FID Slots . . . . .	14
2.5.1	Slot 0 . . . . .	14
2.5.2	Slot 1 . . . . .	15
2.5.3	Slot 2 . . . . .	16
<b>A</b>	<b>Summary</b>	<b>17</b>
A.1	Status . . . . .	17
A.2	Comments . . . . .	17

# 1 Front

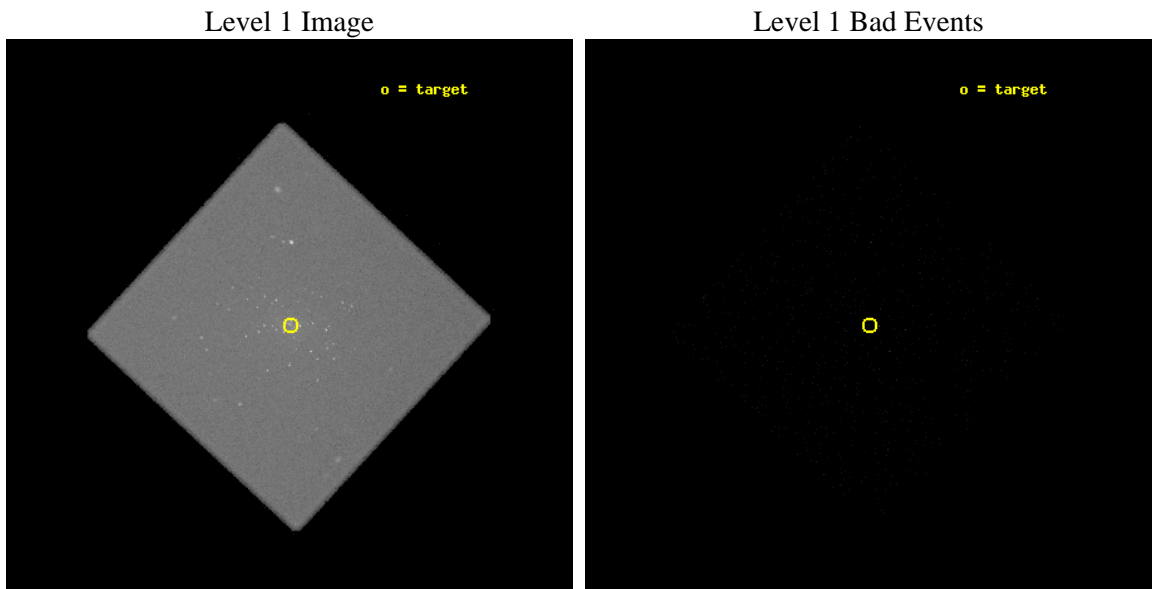
seq_num	300301	Sequence number
obs_id	13281	Observation id
title	Resolving short supersoft source states of optical novae in the core of M31	Proposal title
observer	Dr. Peter Predehl	Principal investigator
object	M31	Source name
ra_targ	10.684583	Observer's specified target RA [deg]
dec_targ	41.269278	Observer's specified target Dec [deg]
ra_nom	10.686846327511	Nominal RA [deg]
dec_nom	41.273070878043	Nominal Dec [deg]
roll_nom	87.902699585118	Nominal Roll [deg]
revision	2	Processing version of data
ontime	19077.301016808	[s]
livetime	18907.485855581	Ontime multiplied by DTCOR
l2events	1254004	Number of level 2 events



## 2 OBI

### 2.1 OBI

#### 2.1.1 Images



### 2.1.2 Parameters

obi_num	1	Obi number	sched_exp_time	19000.000000	[s] Scheduled observation exposure time
ascdsver	8.4.5	Processing system revision	ontime	19077.301016808	[s]
caldbver	4.5.1	&#160	l1events	1720131	Number of level 1 events
date	2012-07-28T10:37:40	Date and time of file creation			
revision	2	Processing version of data			

### 2.1.3 Events

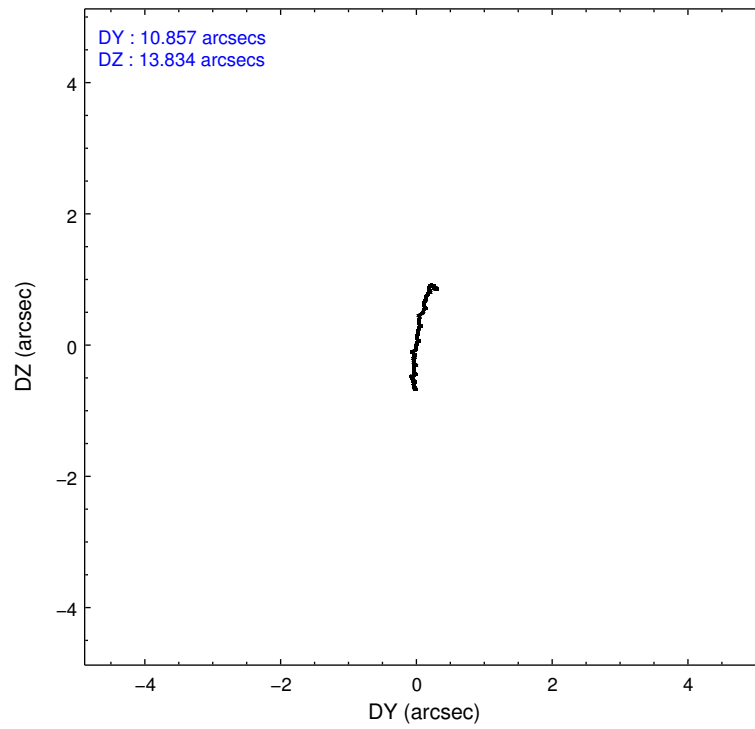
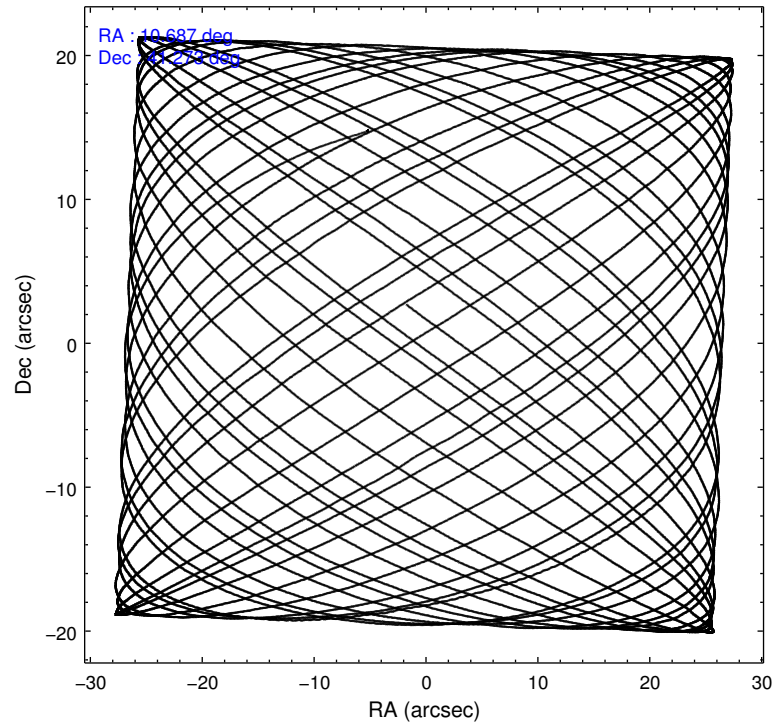
#### Level 1 Events

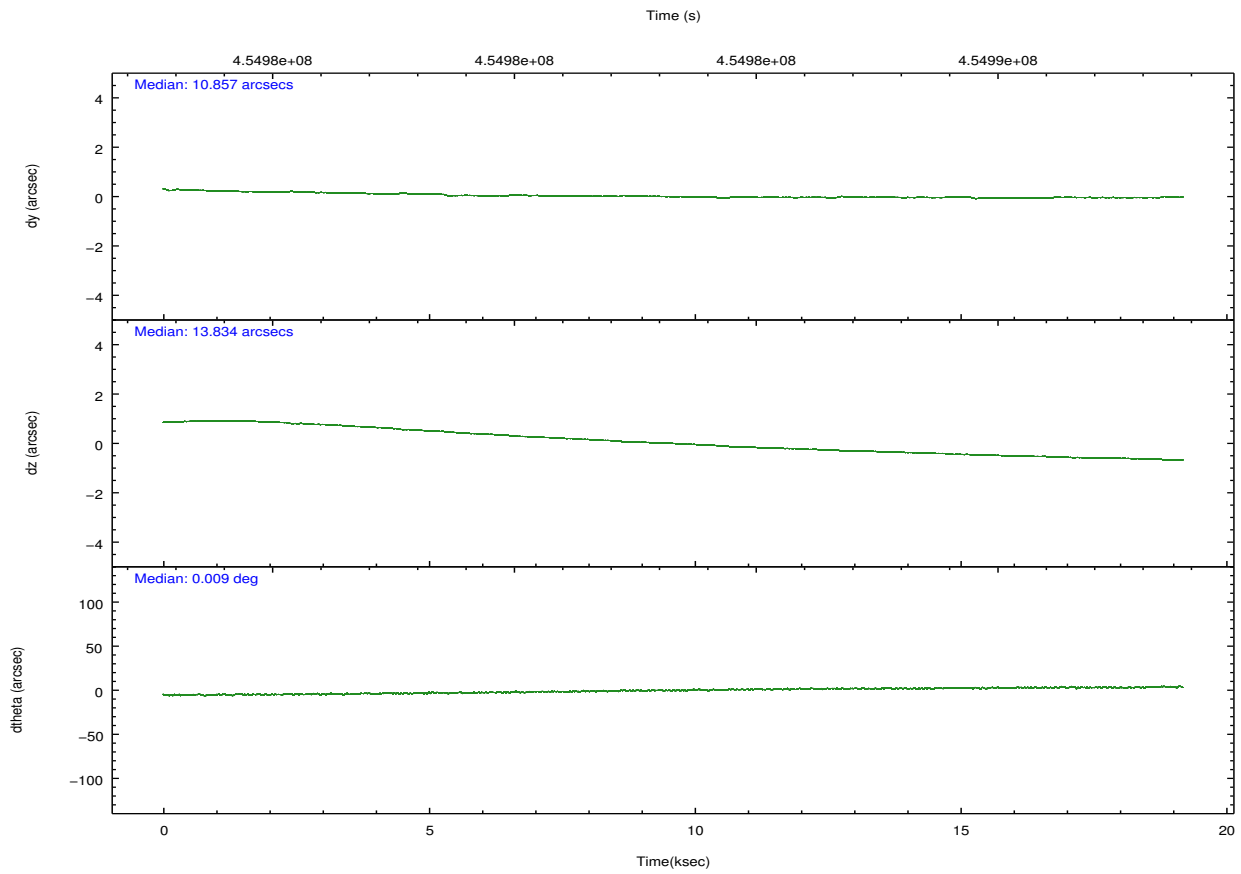
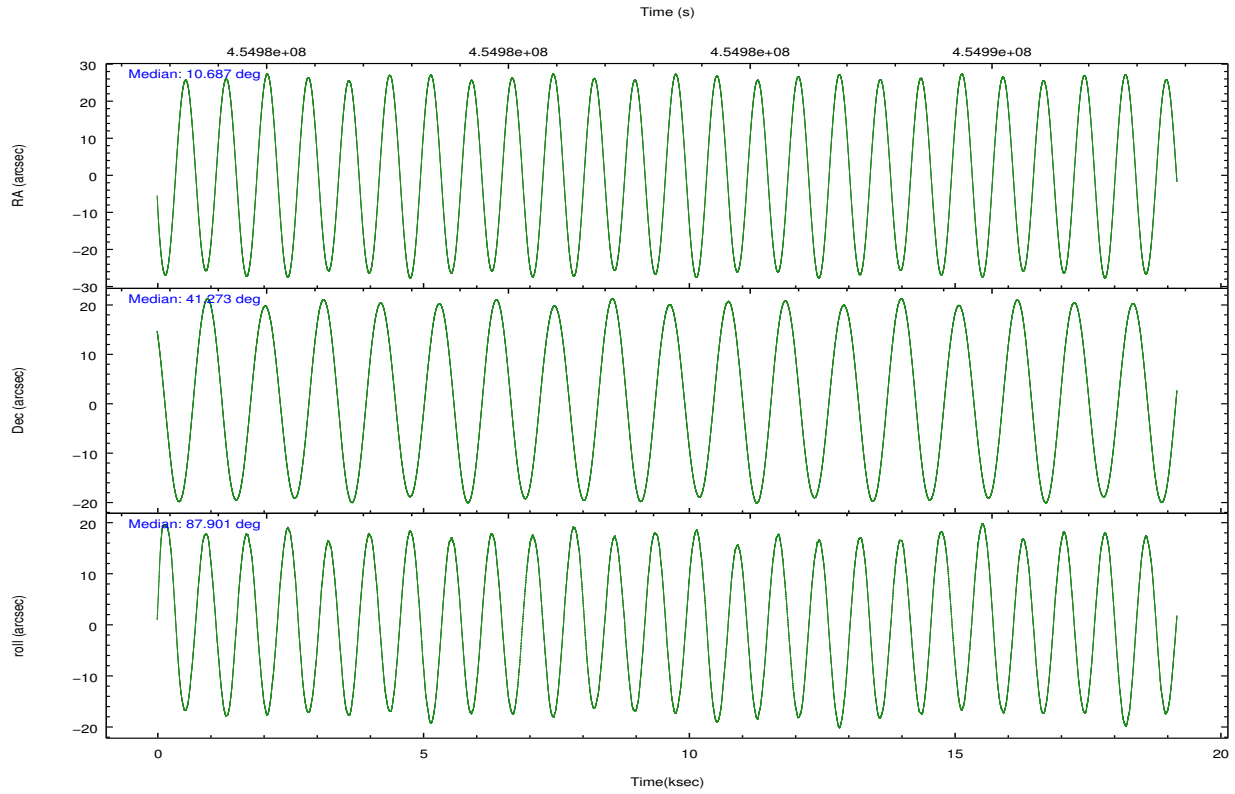
	<b>segment 0</b>
level 1 events	1720131
rejected events	8718
rejected %	0%

## 2.2 Compared Parameters

Parameter	Planned	Actual	Parameter	Planned	Actual
Instrument	HRC	HRC	Obspar format version number	7	7
Detector	HRC-I	HRC-I	Obspar file type	PREDICTED	ACTUAL
Grating	NONE	NONE	Obspar update status	NONE	UPDATED
Data mode	OBSERVING	OBSERVING			
Observation mode	POINTING	POINTING			
[deg] Pointing RA	10.704511	10.68684632751076			
[deg] Pointing Dec	41.249411	41.27307087804342			
[deg] Pointing Roll	87.986548	87.90269958511826			
[mm] SIM focus pos	-1.040293	-1.038866356238299			
[mm] SIM defocus	0	0.001426264420575141			
[mm] SIM translation stage pos	126.985494	126.9829799899862			
[mm] SIM translation stage offset	0	0.002508901615314585			
[s] Observation start time (MET)	454973869.184000	454973438.40486			
Observation start date	2012-06-01T21:36:43	2012-06-01T21:30:38			
[s] Observation end time (MET)	454992869.184000	454993846.66845			
Observation end date	2012-06-02T02:53:23	2012-06-02T03:10:46			

## 2.3 Aspect



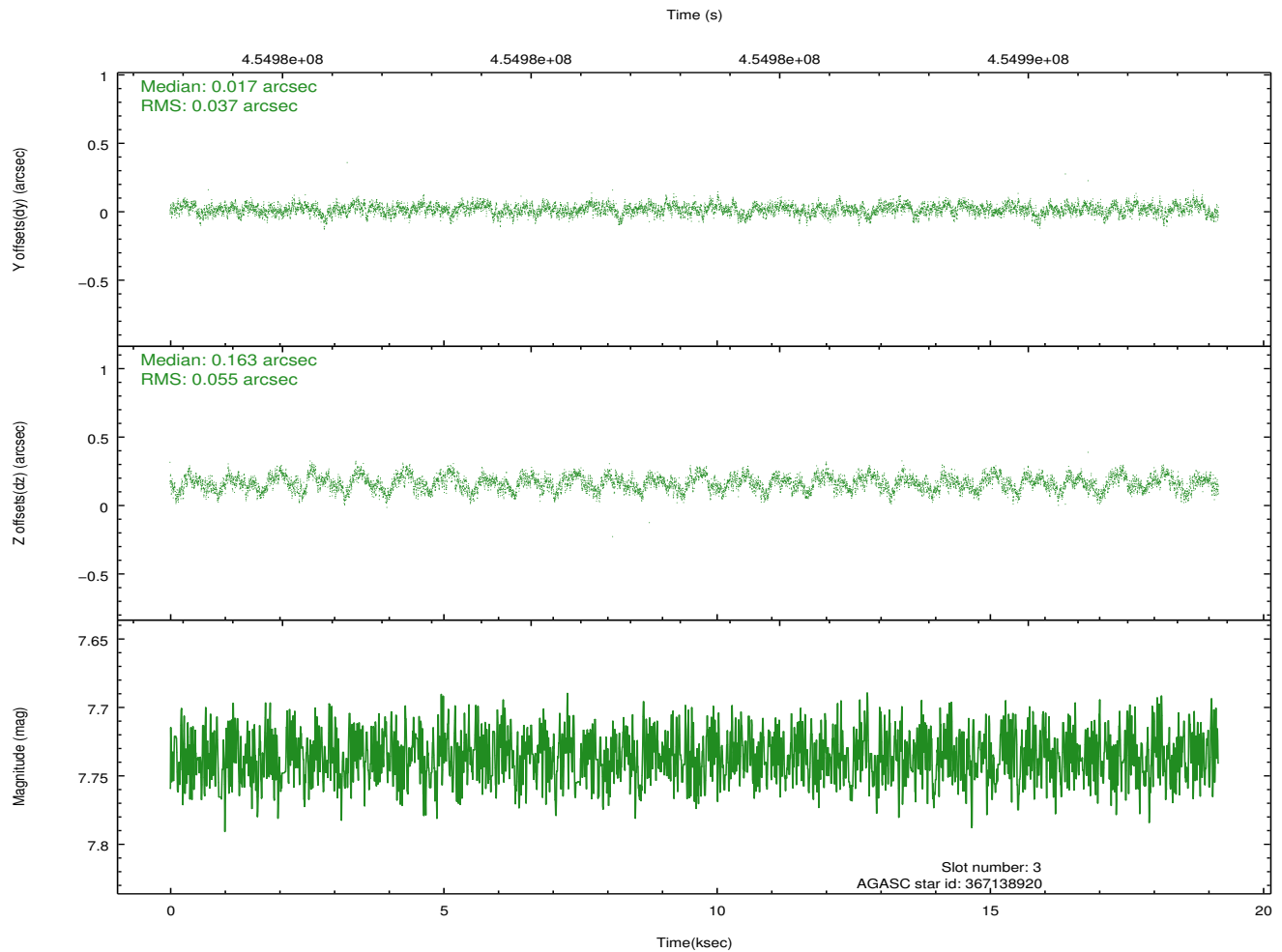
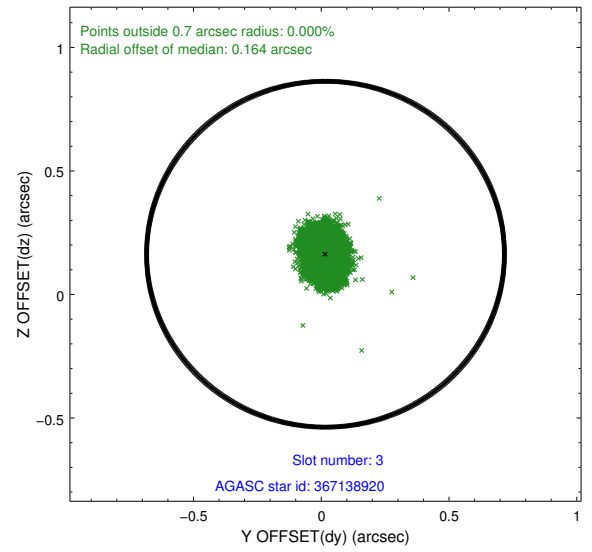
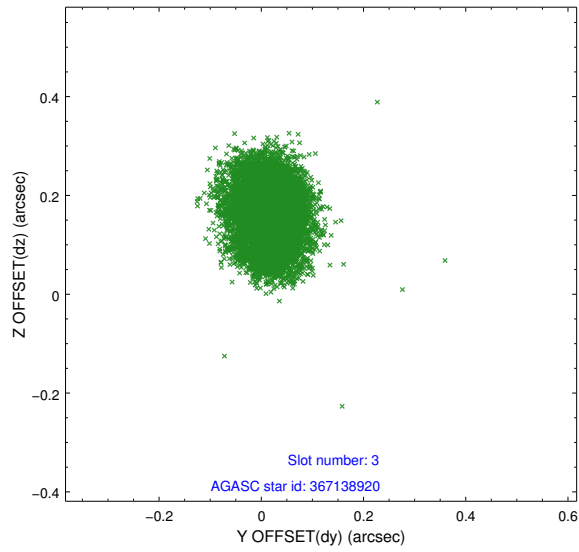


### Slot Statistics

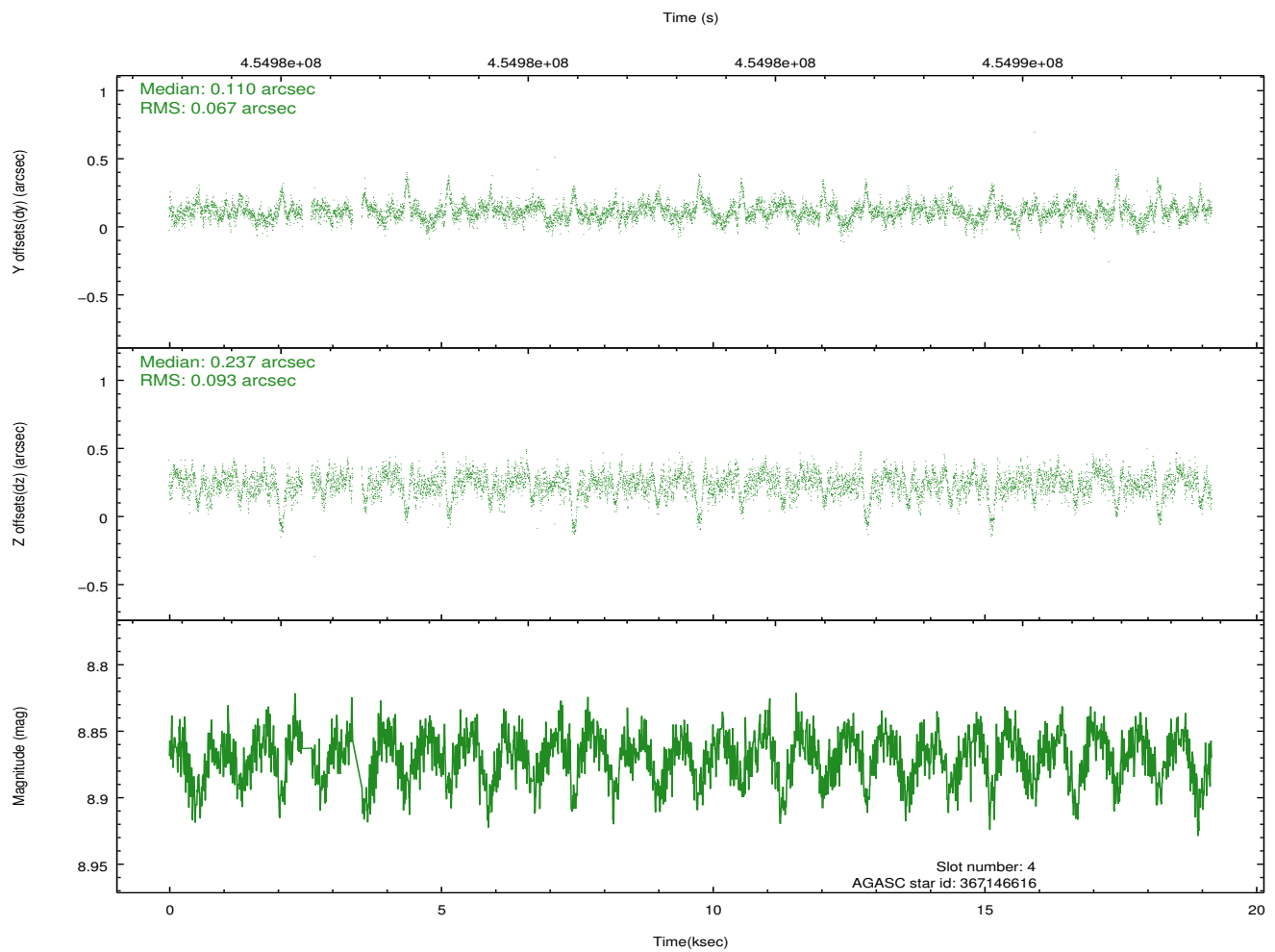
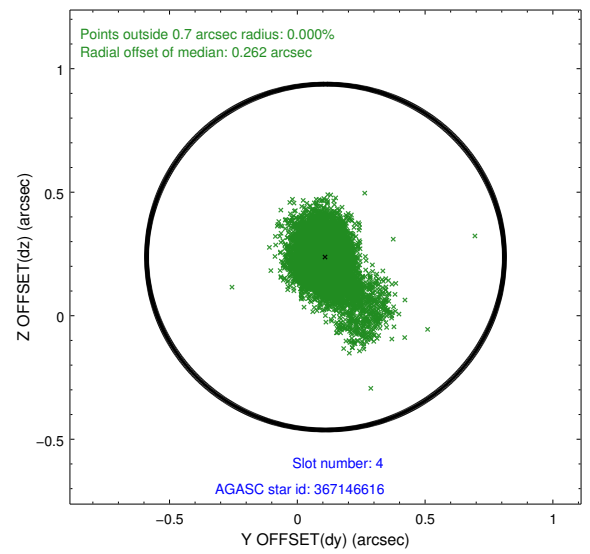
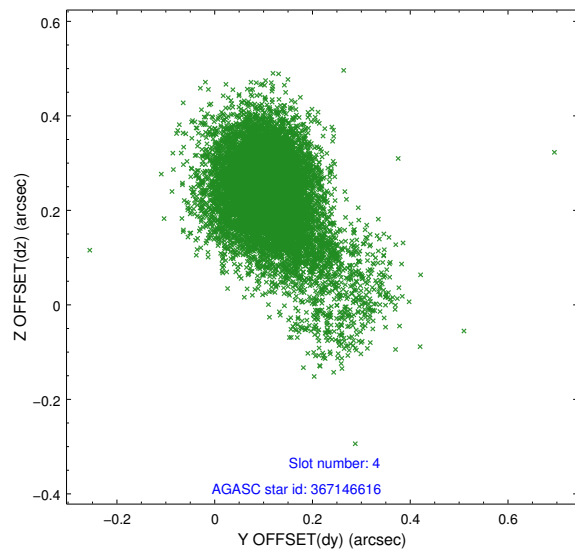
slot	status	id	mag	n_pts	med_dy	med_dz	dr1	dr2	ra	dec	mean_y	mean_z
0	FID	HRC-I-1	7.01	4680	-0.076	0.002	0.019	0.029	0.000000	0.000000	-766.67	-1301.94
1	FID	HRC-I-2	7.04	4680	0.259	-0.156	0.023	0.035	0.000000	0.000000	846.13	-1303.95
2	FID	HRC-I-3	7.09	4680	-0.065	0.063	0.021	0.031	0.000000	0.000000	-1194.94	1002.41
3	GUIDE	367138920	7.74	9359	0.017	0.163	0.071	0.114	11.513485	40.808909	-1497.14	-2259.05
4	GUIDE	367146616	8.87	9200	0.110	0.237	0.108	0.220	11.418645	41.190163	-136.77	-1940.32
5	GUIDE	367148872	7.21	9359	-0.000	-0.208	0.086	0.142	10.505940	40.688258	-2037.46	470.74
6	GUIDE	367663272	9.28	9321	-0.031	-0.271	0.133	0.209	10.656279	41.699429	1614.47	187.60
7	GUIDE	367674552	8.85	9353	-0.099	0.096	0.098	0.157	11.016238	41.570845	1188.13	-798.08

## 2.4 Star Slots

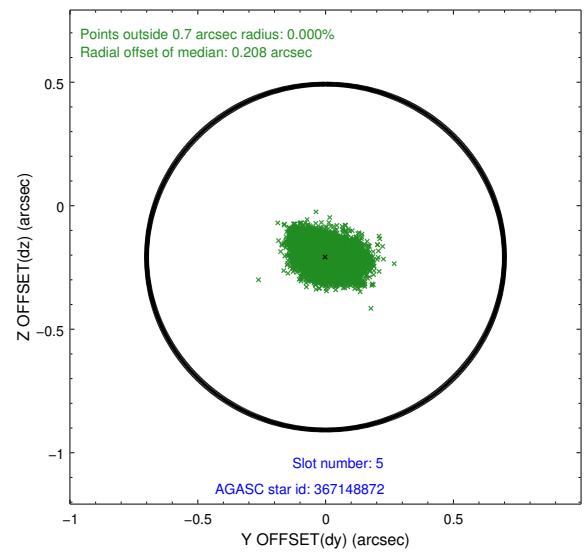
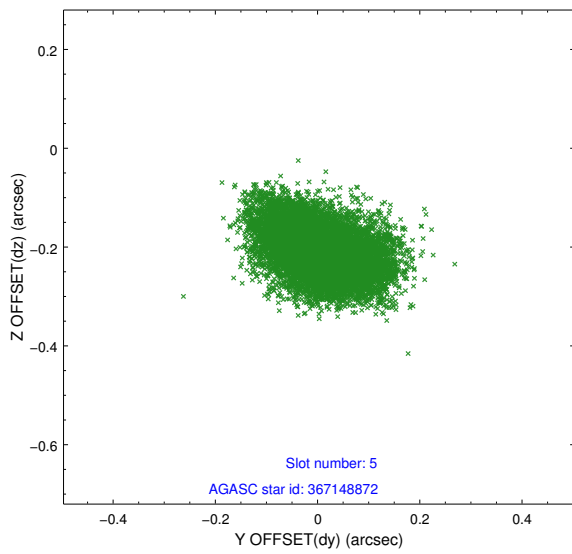
### 2.4.1 Slot 3



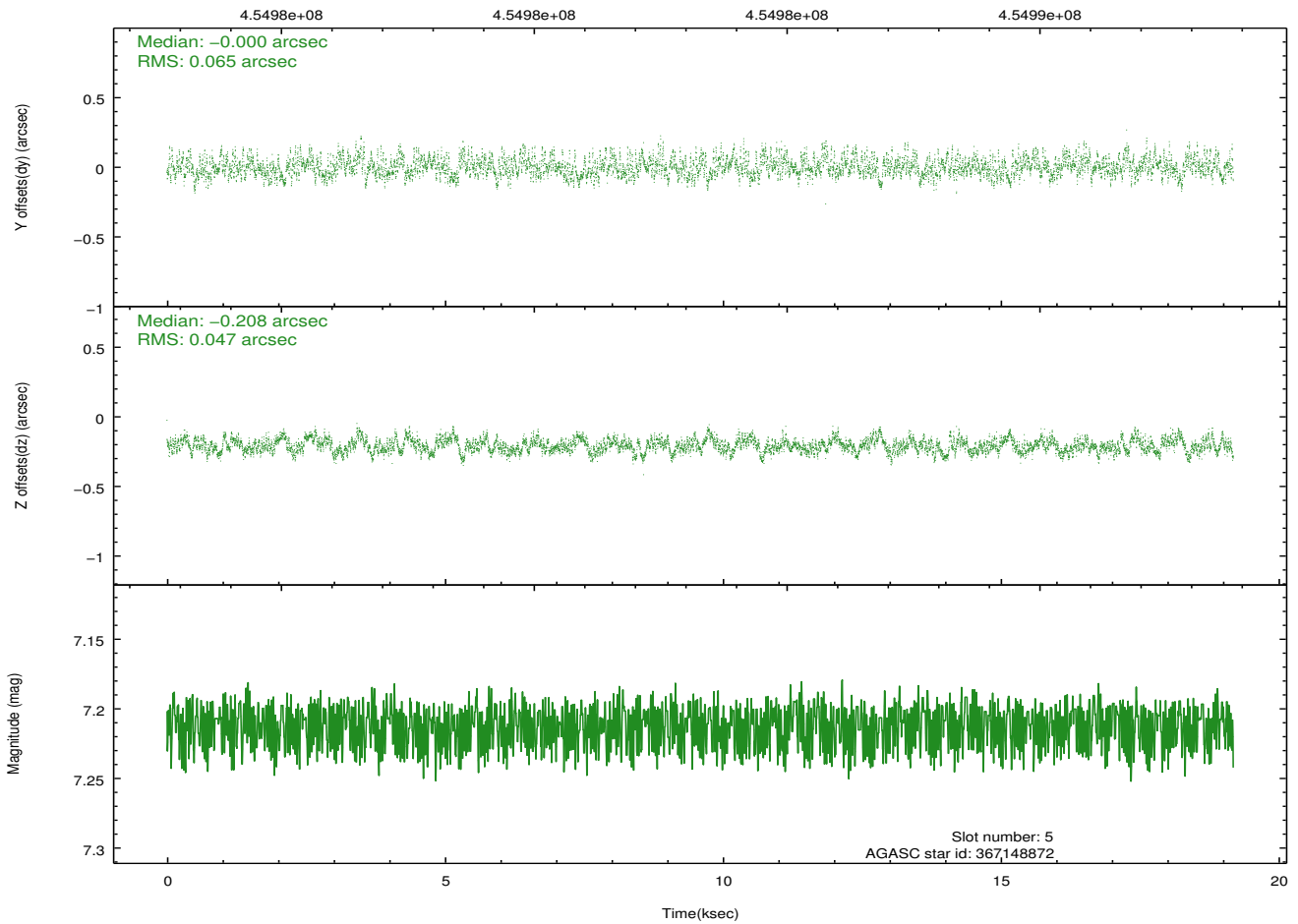
## 2.4.2 Slot 4



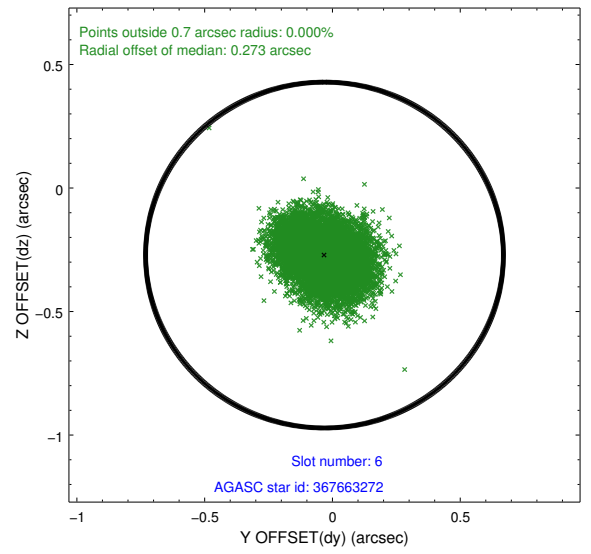
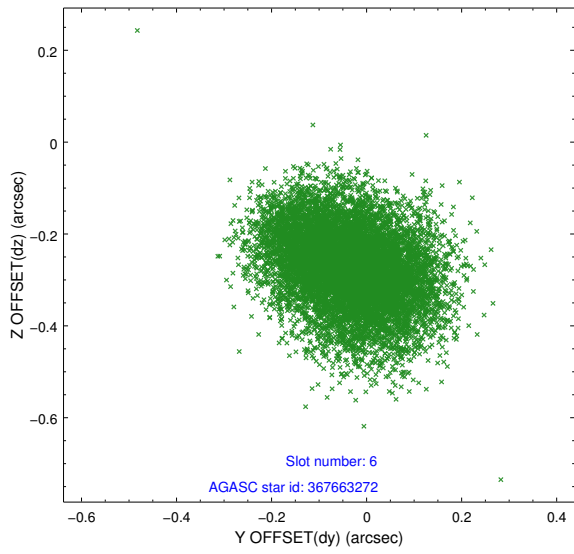
### 2.4.3 Slot 5



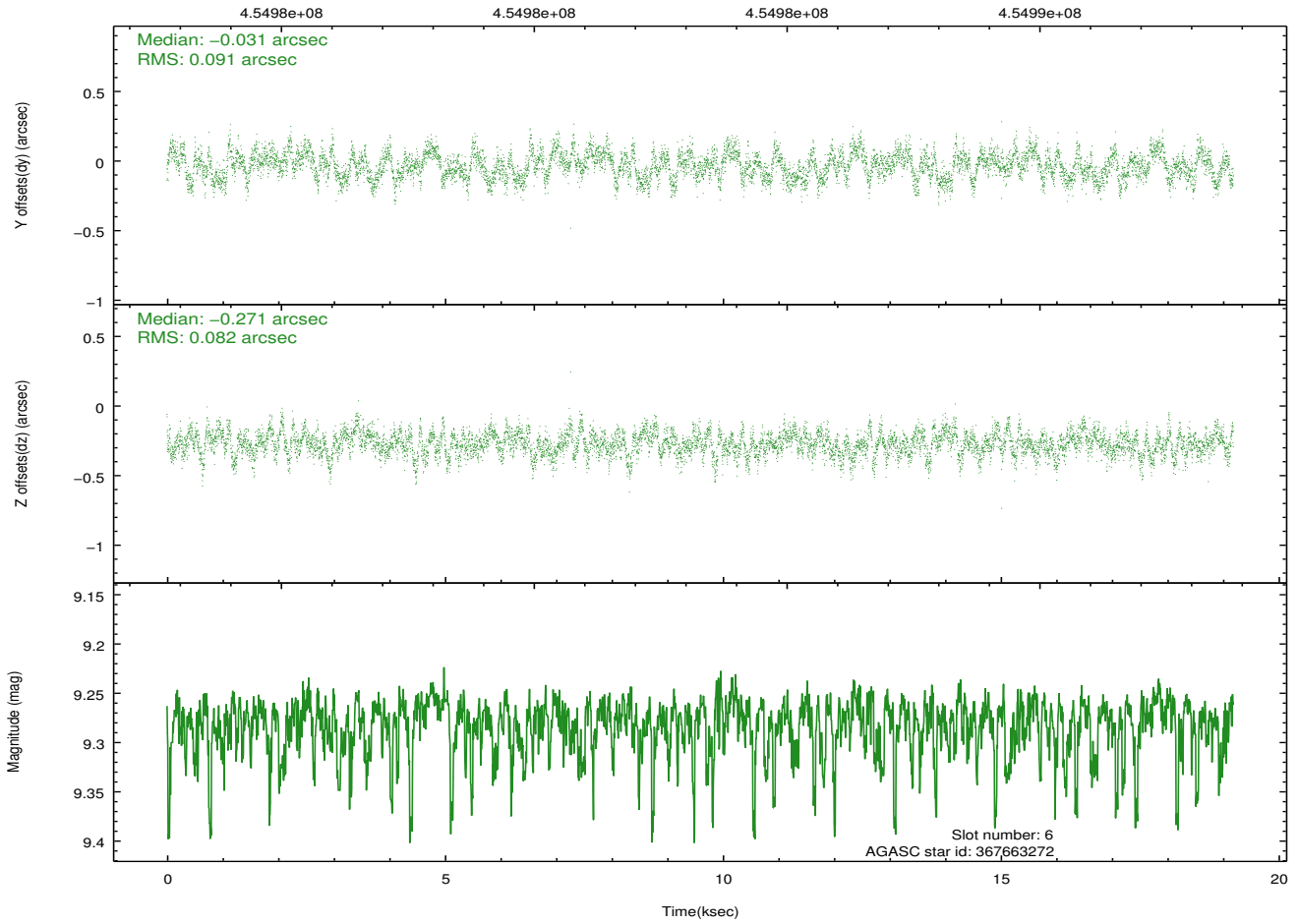
Time (s)



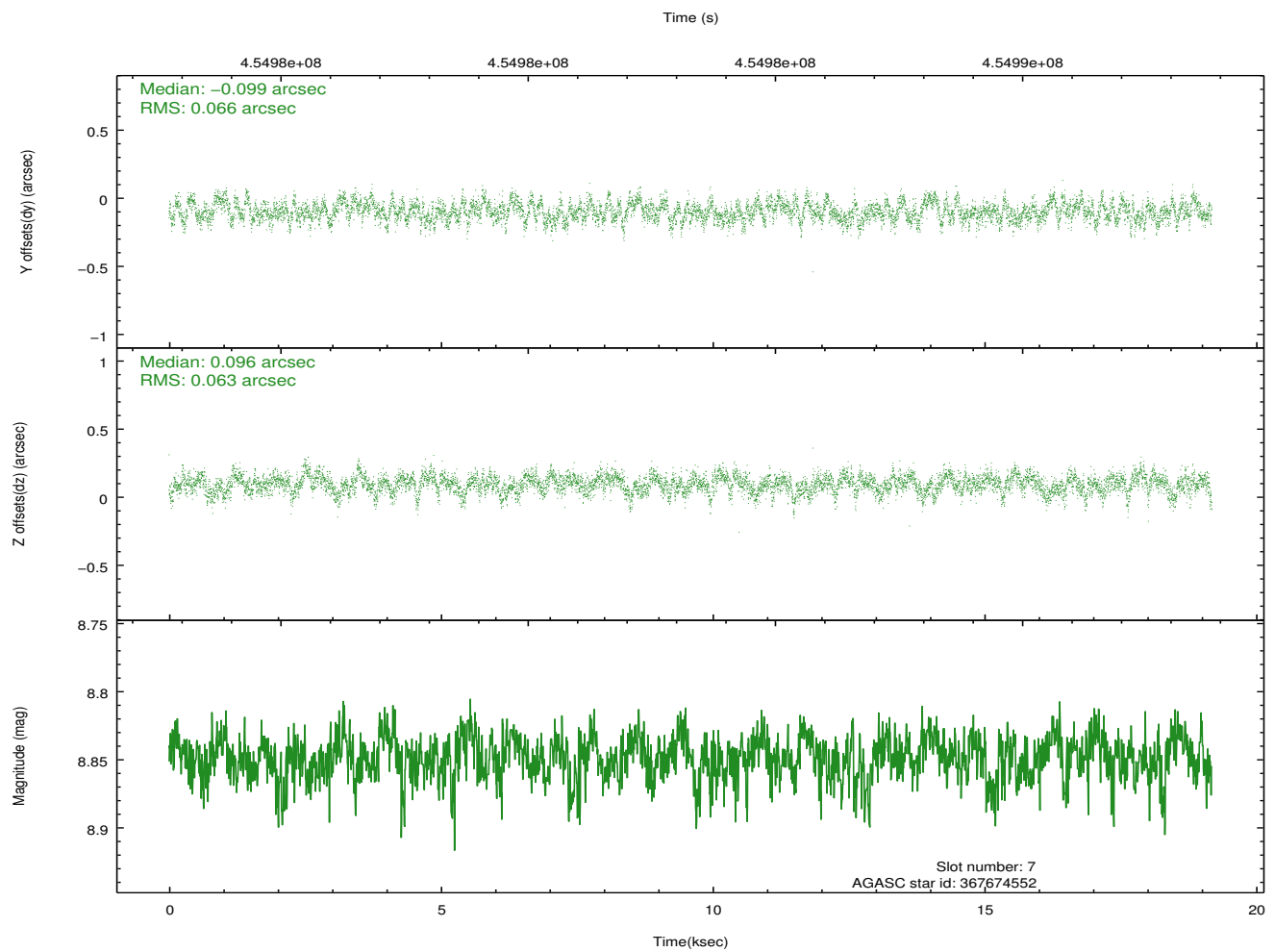
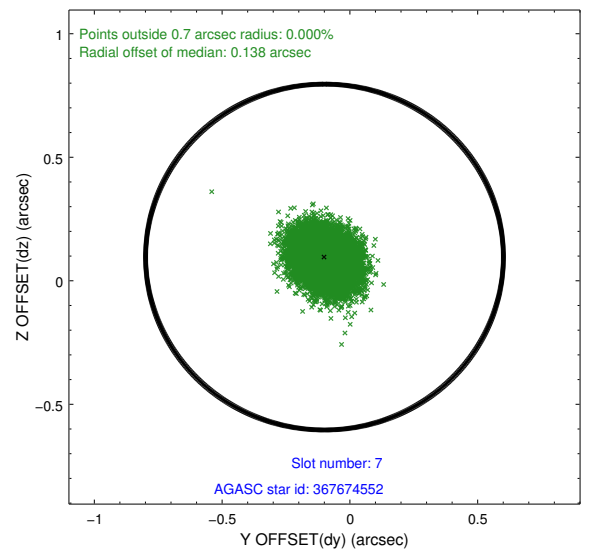
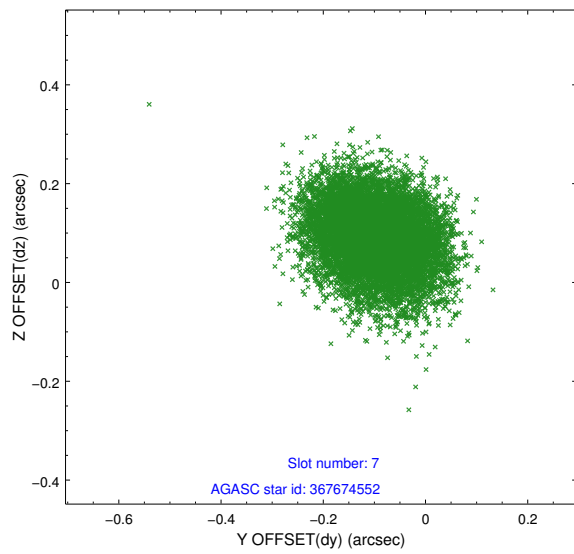
## 2.4.4 Slot 6



Time (s)

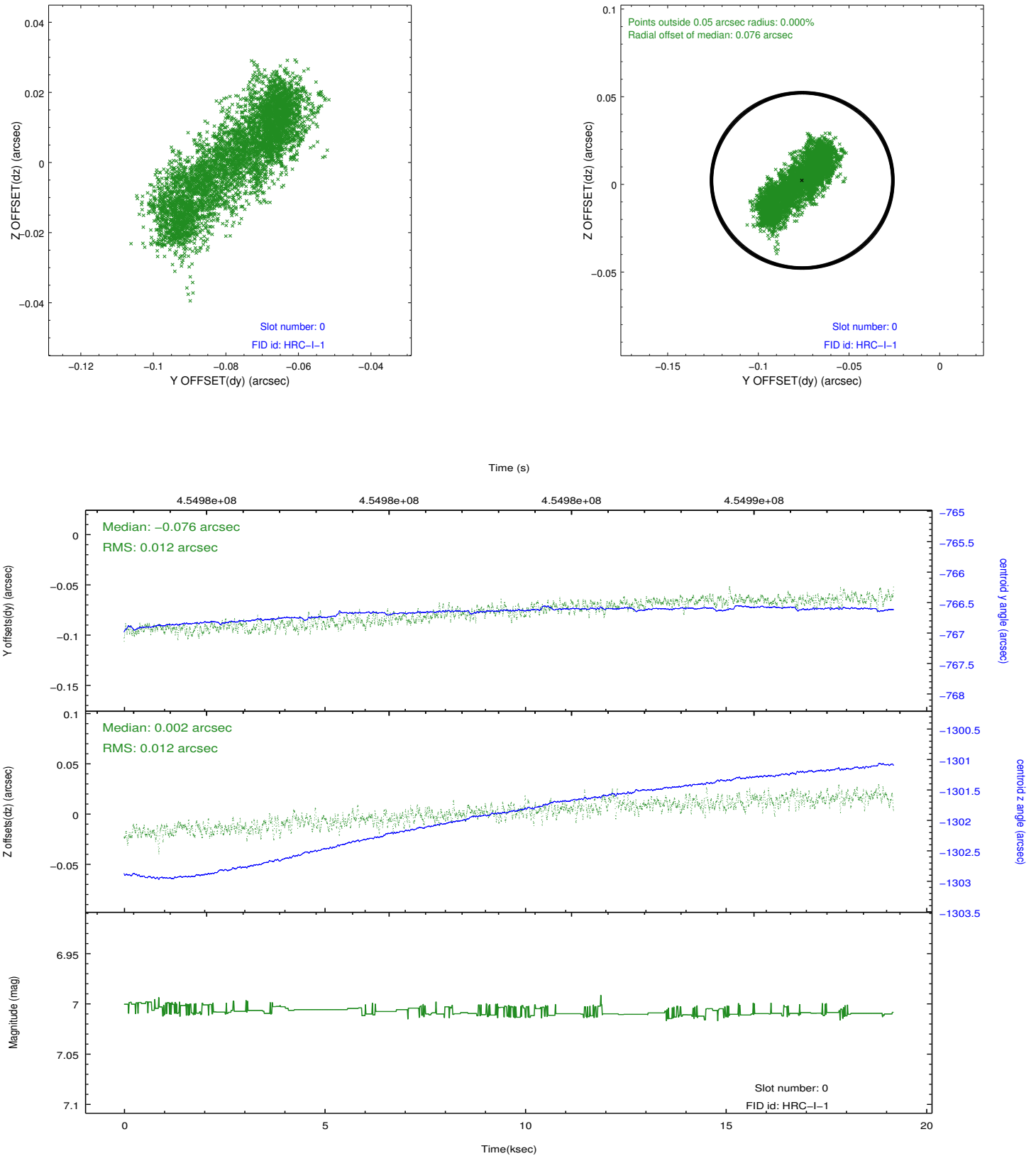


## 2.4.5 Slot 7

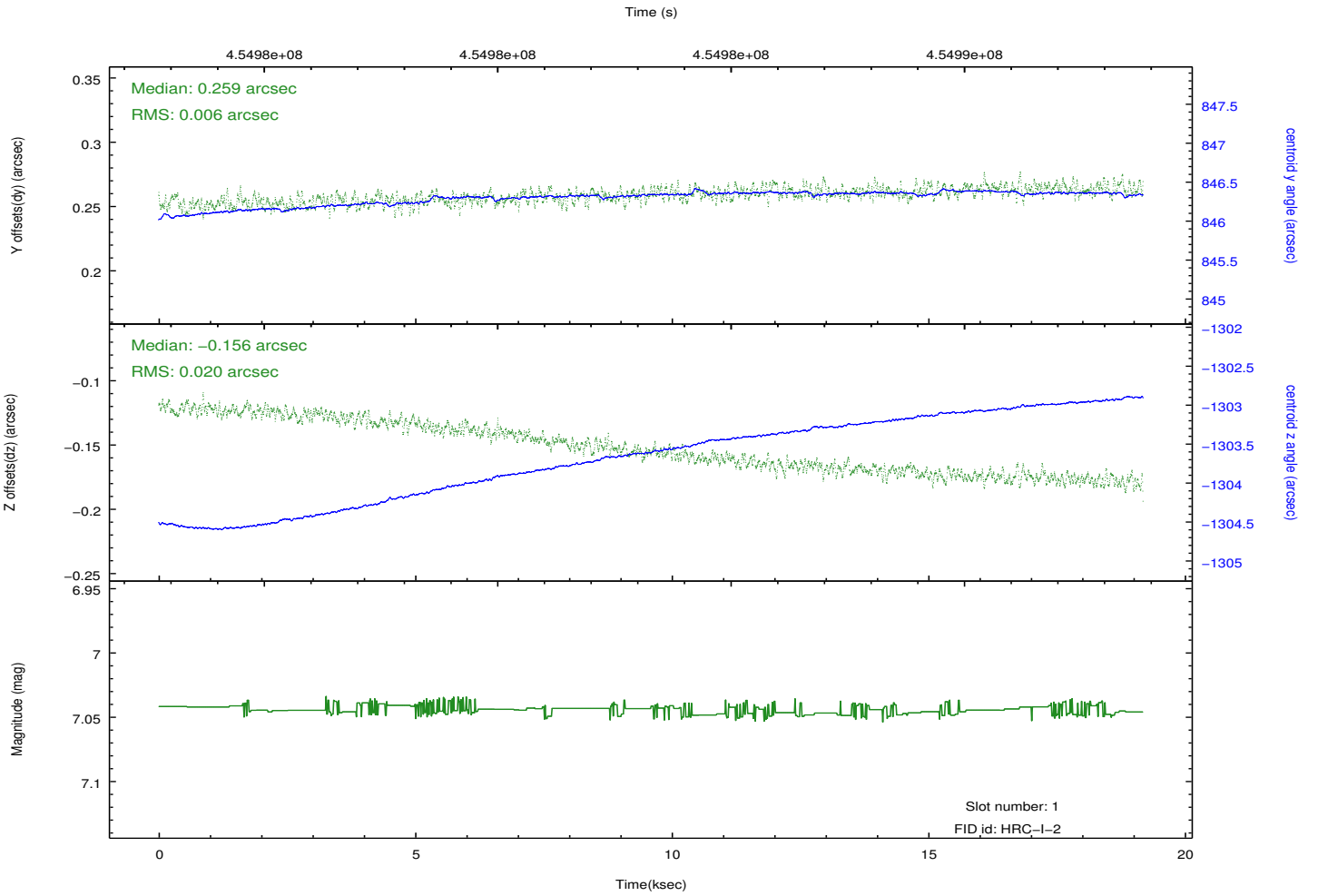
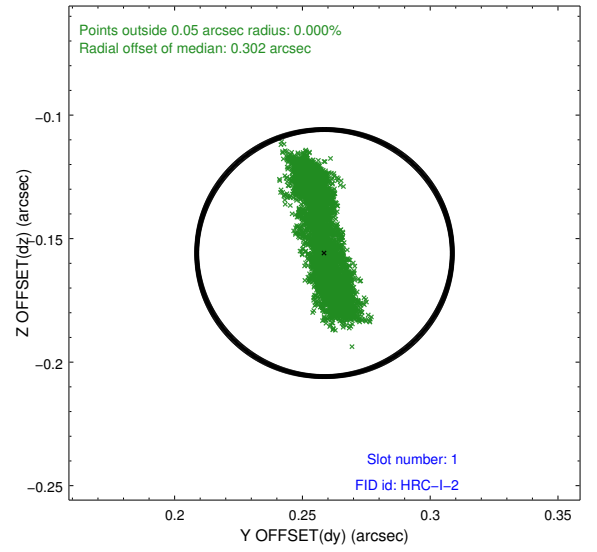
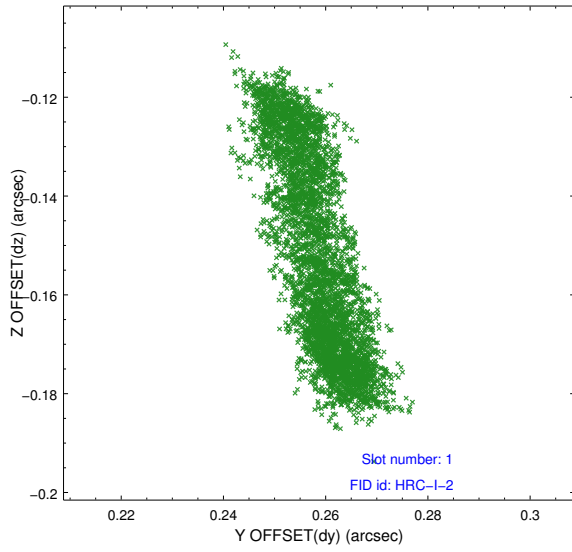


## 2.5 FID Slots

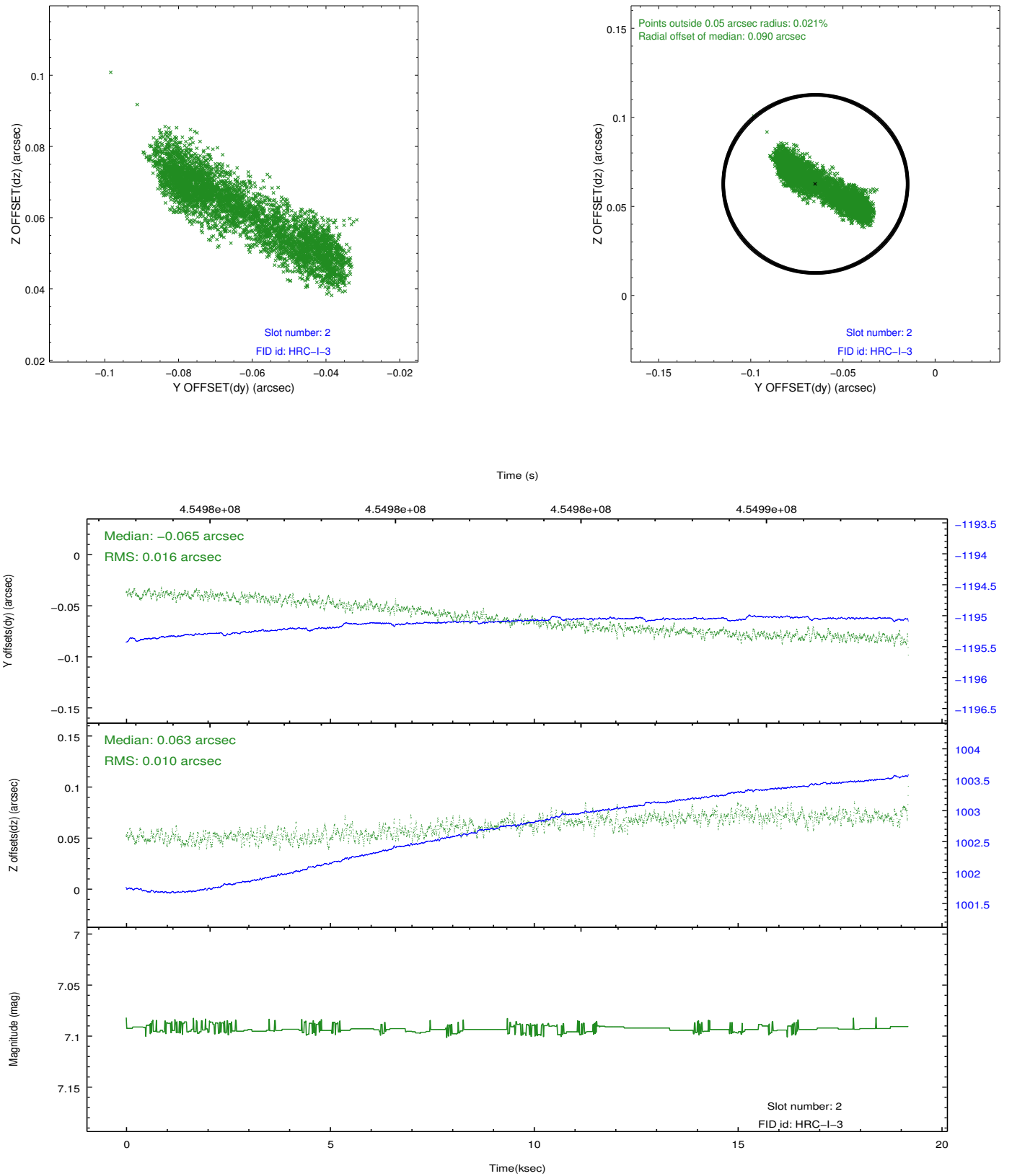
### 2.5.1 Slot 0



## 2.5.2 Slot 1



### 2.5.3 Slot 2



# A Summary

## A.1 Status

V&V Scientist	Beth Sundheim
V&V Date (YYYY-MM-DD)	2012.07.29
V&V Edition	1
V&V Disposition and Status	OK
V&V Charge Time	19.077301016808

## A.2 Comments