

V&V Reference Report

L2 ASCDS Version : 8.4.5

Observation 13481 - L2 Version 1
Chandra X-Ray Center

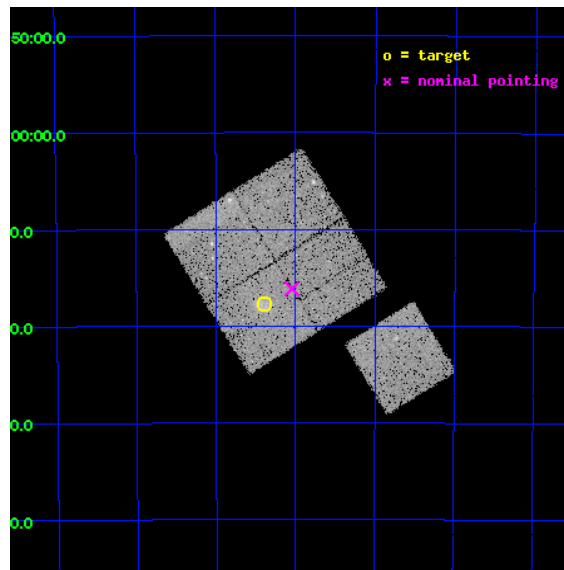
L2 Processing Date : Jun 25 2012

Contents

1	Front	2
2	OBI	3
2.1	OBI	3
2.1.1	Images	3
2.1.2	Bias	3
2.1.3	Parameters	4
2.1.4	Events	4
2.2	Compared Parameters	5
2.3	Aspect	6
2.4	Star Slots	9
2.4.1	Slot 3	9
2.4.2	Slot 4	10
2.4.3	Slot 5	11
2.4.4	Slot 6	12
2.4.5	Slot 7	13
2.5	FID Slots	14
2.5.1	Slot 0	14
2.5.2	Slot 1	15
2.5.3	Slot 2	16
A	Summary	17
A.1	Status	17
A.2	Comments	17

1 Front

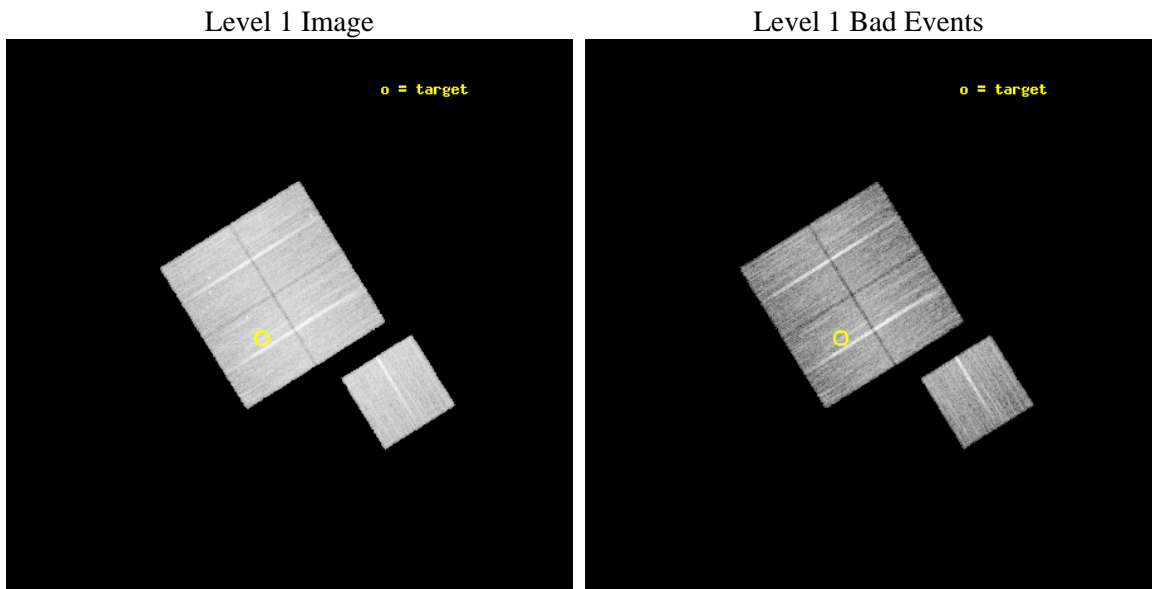
seq_num	801122	Sequence number
obs_id	13481	Observation id
title	Cosmology and Cluster Evolution from the 80 Most Massive Clusters in 2000 deg ² from the South Pole Telescope Survey	Proposal title
observer	Dr Bradford Benson	Principal investigator
object	SPT-CLJ0256-5617	Source name
dtcycle	0	
cycle	P	events from which exps? Prim/Second/Both
ra_targ	44.096667	Observer's specified target RA [deg]
dec_targ	-56.296194	Observer's specified target Dec [deg]
ra_nom	44.011358312875	Nominal RA [deg]
dec_nom	-56.269404723371	Nominal Dec [deg]
roll_nom	148.13772011102	Nominal Roll [deg]
revision	1	Processing version of data
ontime	22078.200169802	Sum of GTIs [s]
livetime	21789.732230849	Livetime [s]
ontime0	22075.059159577	Sum of GTIs [s]
ontime1	22078.200169802	Sum of GTIs [s]
ontime2	22078.200169802	Sum of GTIs [s]
ontime3	22078.200169802	Sum of GTIs [s]
ontime6	22075.059239149	Sum of GTIs [s]
l2events	65389	Number of level 2 events



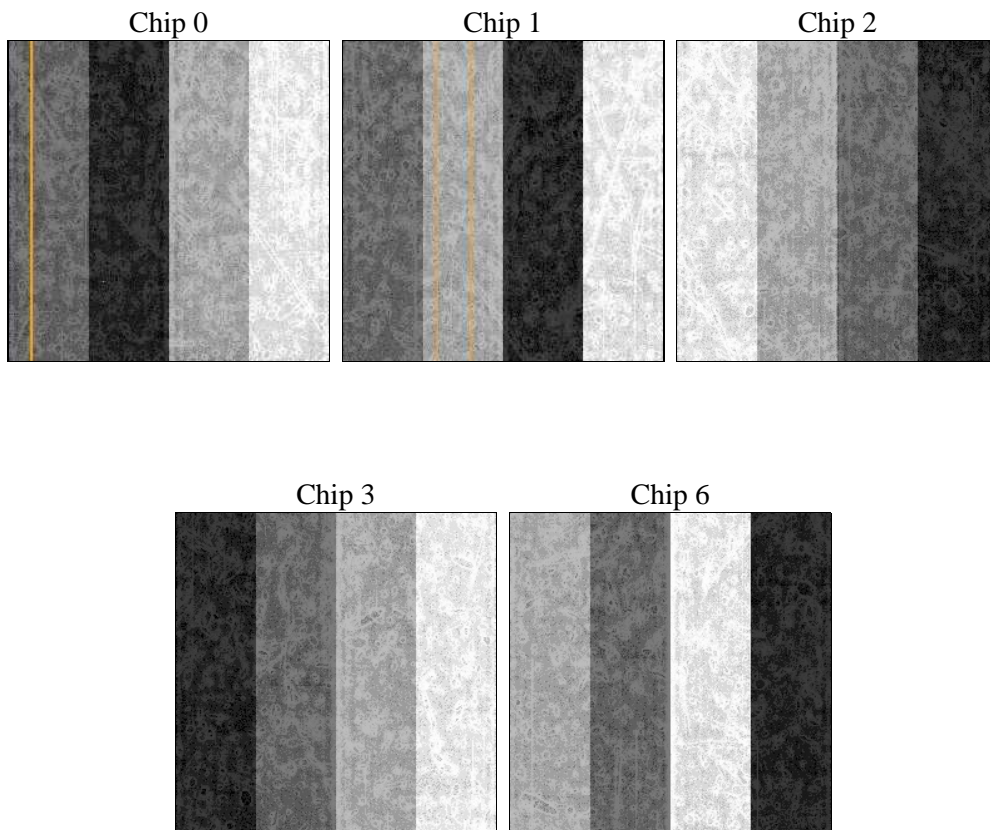
2 OBI

2.1 OBI

2.1.1 Images



2.1.2 Bias



2.1.3 Parameters

obi_num	0	Obi number	sched_exp_time	21996.528000	[s] Scheduled observation exposure time
ascdsver	8.4.5	Processing system revision	ontime	22078.200169802	Sum of GTIs [s]
caldbver	4.4.10	 	ontime0	22075.059159577	Sum of GTIs [s]
date	2012-06-25T03:16:07	Date and time of file creation	ontime1	22078.200169802	Sum of GTIs [s]
revision	1	Processing version of data	ontime2	22078.200169802	Sum of GTIs [s]
			ontime3	22078.200169802	Sum of GTIs [s]
			ontime6	22075.059239149	Sum of GTIs [s]
			l1events	625271	Number of level 1 events

2.1.4 Events

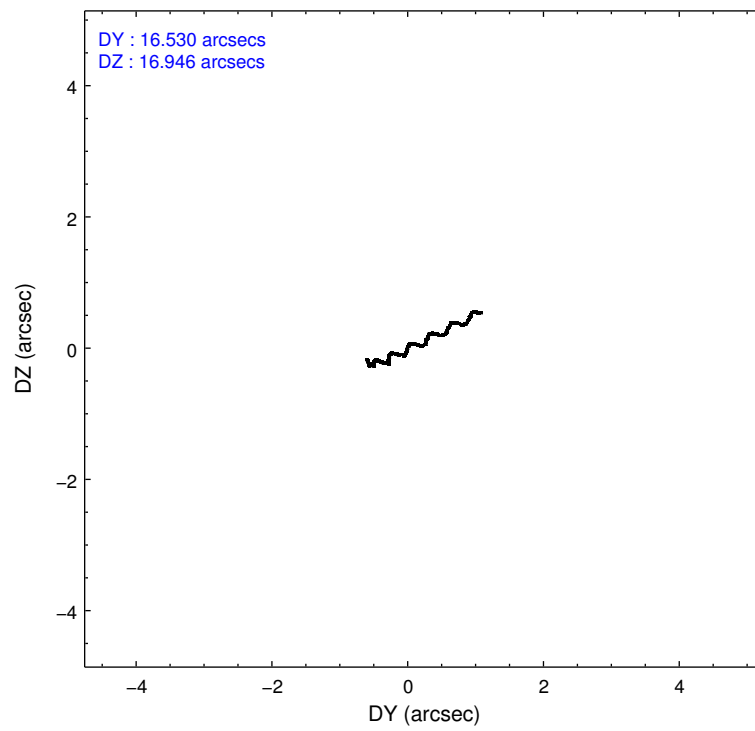
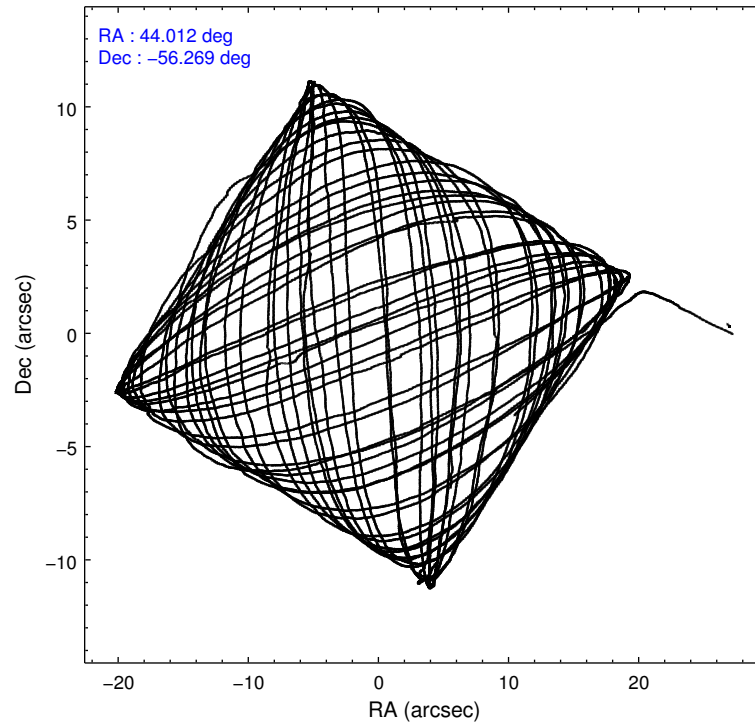
	ccd 0	ccd 1	ccd 2	ccd 3	ccd 6
level 1 events	118497	119880	130598	128482	127814
rejected events	103193	102696	116217	112959	112833
rejected %	87%	85%	88%	87%	88%

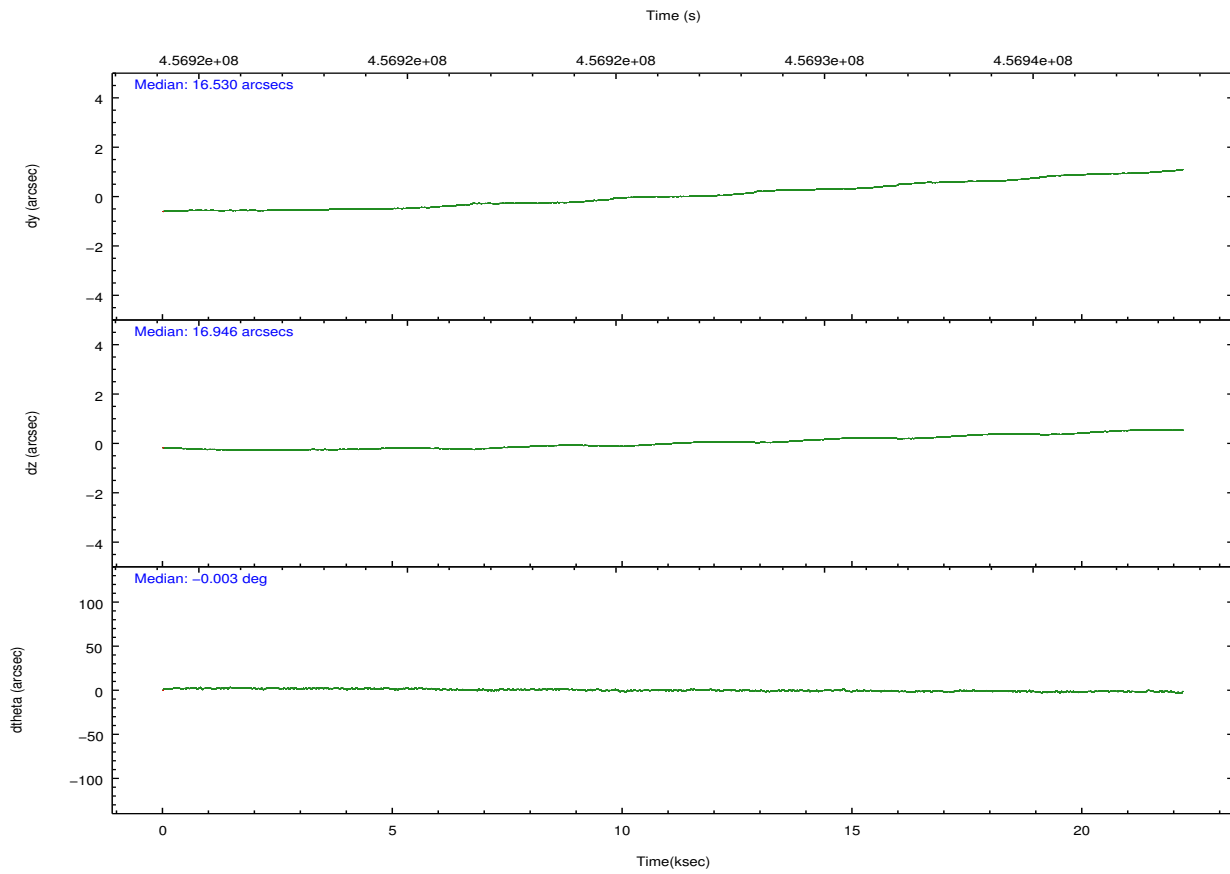
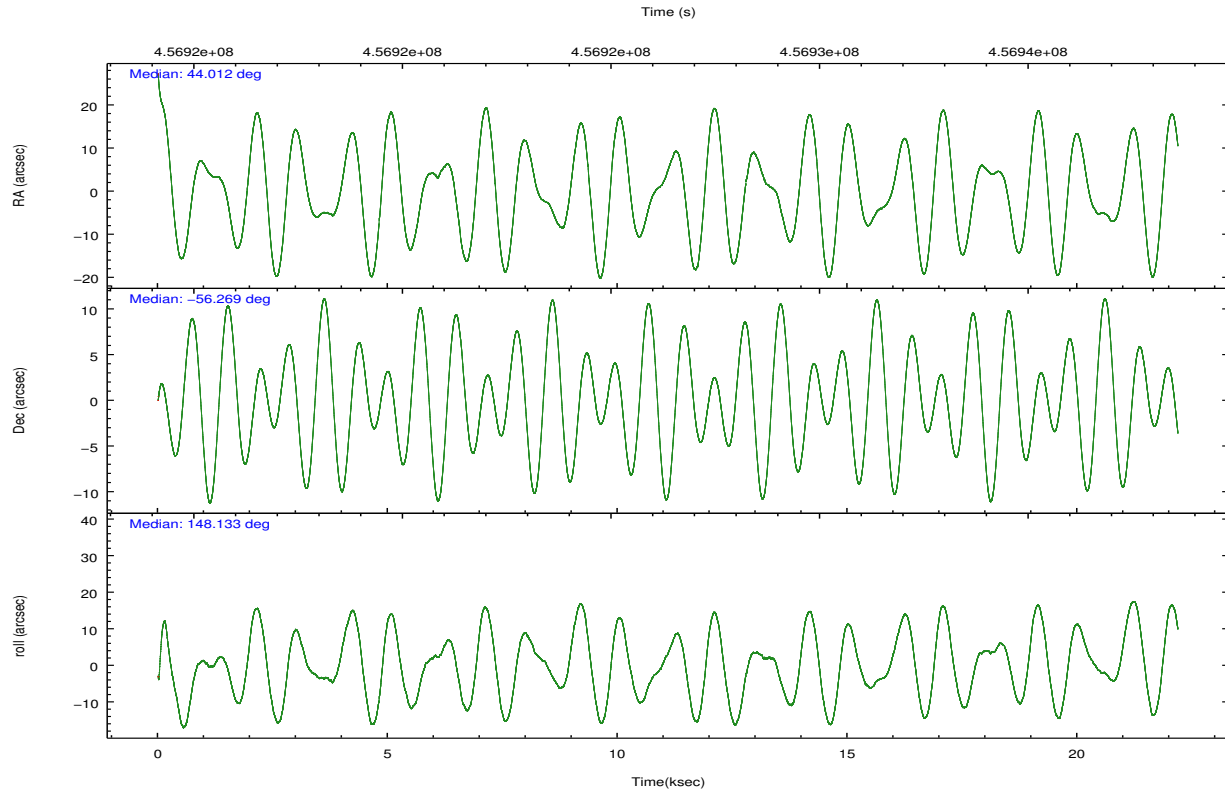
	ccd 0	ccd 1	ccd 2	ccd 3	ccd 6
grade 0 events	5377	6351	5046	6135	5242
	4%	5%	3%	4%	4%
grade 1 events	79	81	81	83	63
	0%	0%	0%	0%	0%
grade 2 events	3840	4064	3618	3371	3338
	3%	3%	2%	2%	2%
grade 3 events	1636	1690	1546	1529	1488
	1%	1%	1%	1%	1%
grade 4 events	1451	1611	1463	1545	1533
	1%	1%	1%	1%	1%
grade 5 events	5706	6158	5387	6302	6090
	4%	5%	4%	4%	4%
grade 6 events	3007	3469	2712	2952	3384
	2%	2%	2%	2%	2%
grade 7 events	97401	96456	110745	106565	106676
	82%	80%	84%	82%	83%

2.2 Compared Parameters

Parameter	Planned	Actual	Parameter	Planned	Actual
Instrument	ACIS	ACIS	Obspar format version number	7	7
Detector	ACIS-01236	ACIS-01236	Obspar file type	PREDICTED	ACTUAL
Grating	NONE	NONE	Obspar update status	NONE	UPDATED
Data mode	VFAINT	VFAINT	CCD I0 on	Y	Y
Observation mode	POINTING	POINTING	CCD I1 on	Y	Y
[deg] Pointing RA	44.060799	44.01135831287513	CCD I2 on	Y	Y
[deg] Pointing Dec	-56.270189	-56.26940472337138	CCD I3 on	Y	Y
[deg] Pointing Roll	147.970157	148.1377201110172	CCD S0 on	N	N
[mm] SIM focus pos	-0.782348	-0.7809083437167272	CCD S1 on	N	N
[mm] SIM defocus	0	0.001439871863259334	CCD S2 on	O1	Y
[mm] SIM translation stage pos	-225.842463	-225.8433433320239	CCD S3 on	N	N
[mm] SIM translation stage offset	-7.75	-7.749109670905796	CCD S4 on	N	N
[s] Observation start time (MET)	456915468.184000	456914236.03321	CCD S5 on	N	N
Observation start date	2012-06-24T08:56:42	2012-06-24T08:37:16	Number of optional ACIS chips dropped	0	0
[s] Observation end time (MET)	456937464.184000	456937699.82196	On-chip summing requested	N	N
Observation end date	2012-06-24T15:03:18	2012-06-24T15:08:19	Subarray requested	NONE	NONE
Read mode	TIMED	TIMED	Alternating exposures requested	N	N
			[s] Primary exposure time	0.000000	3.1

2.3 Aspect



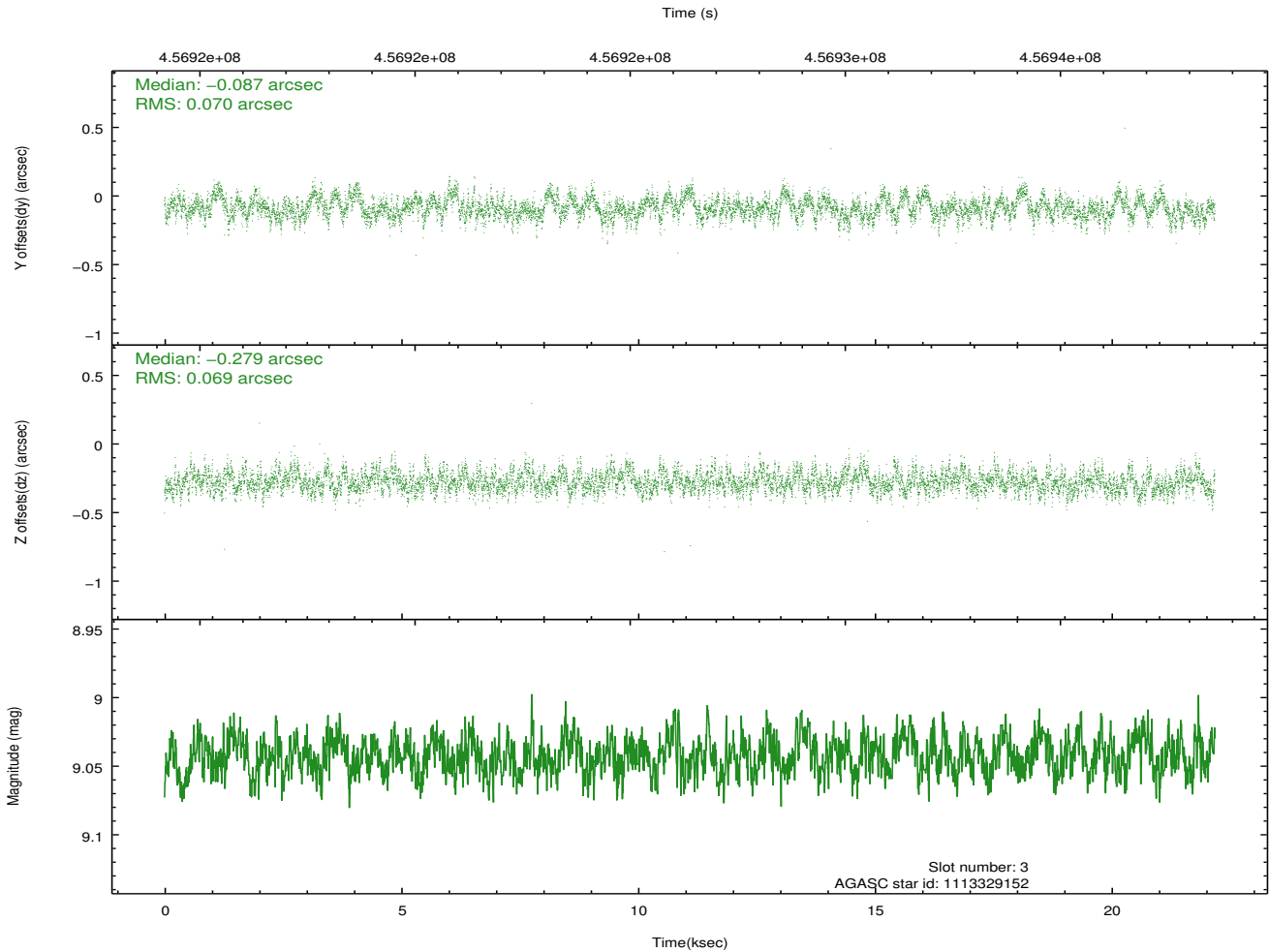
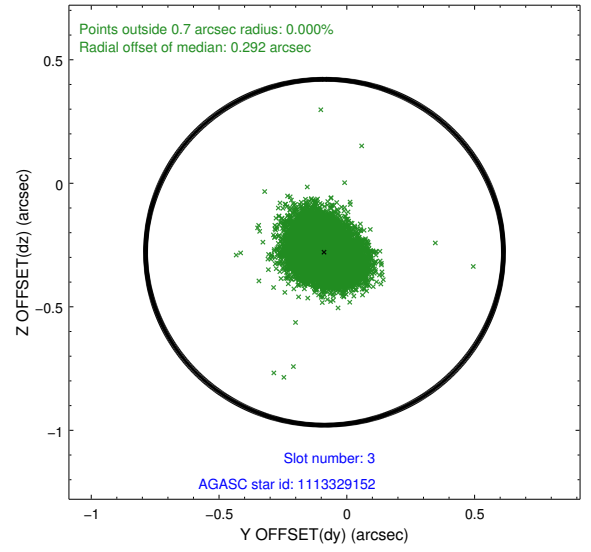
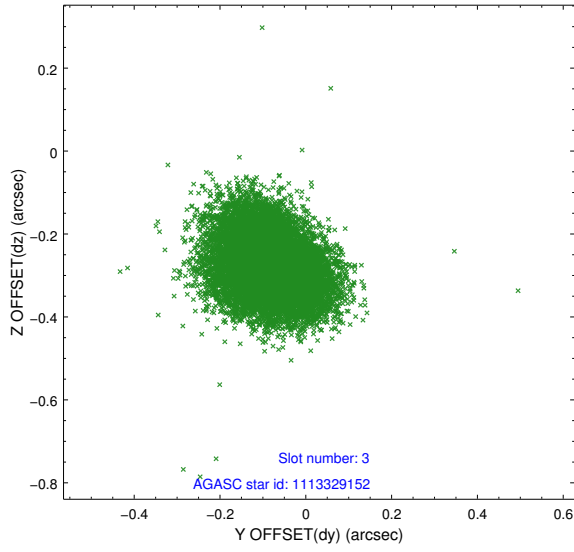


Slot Statistics

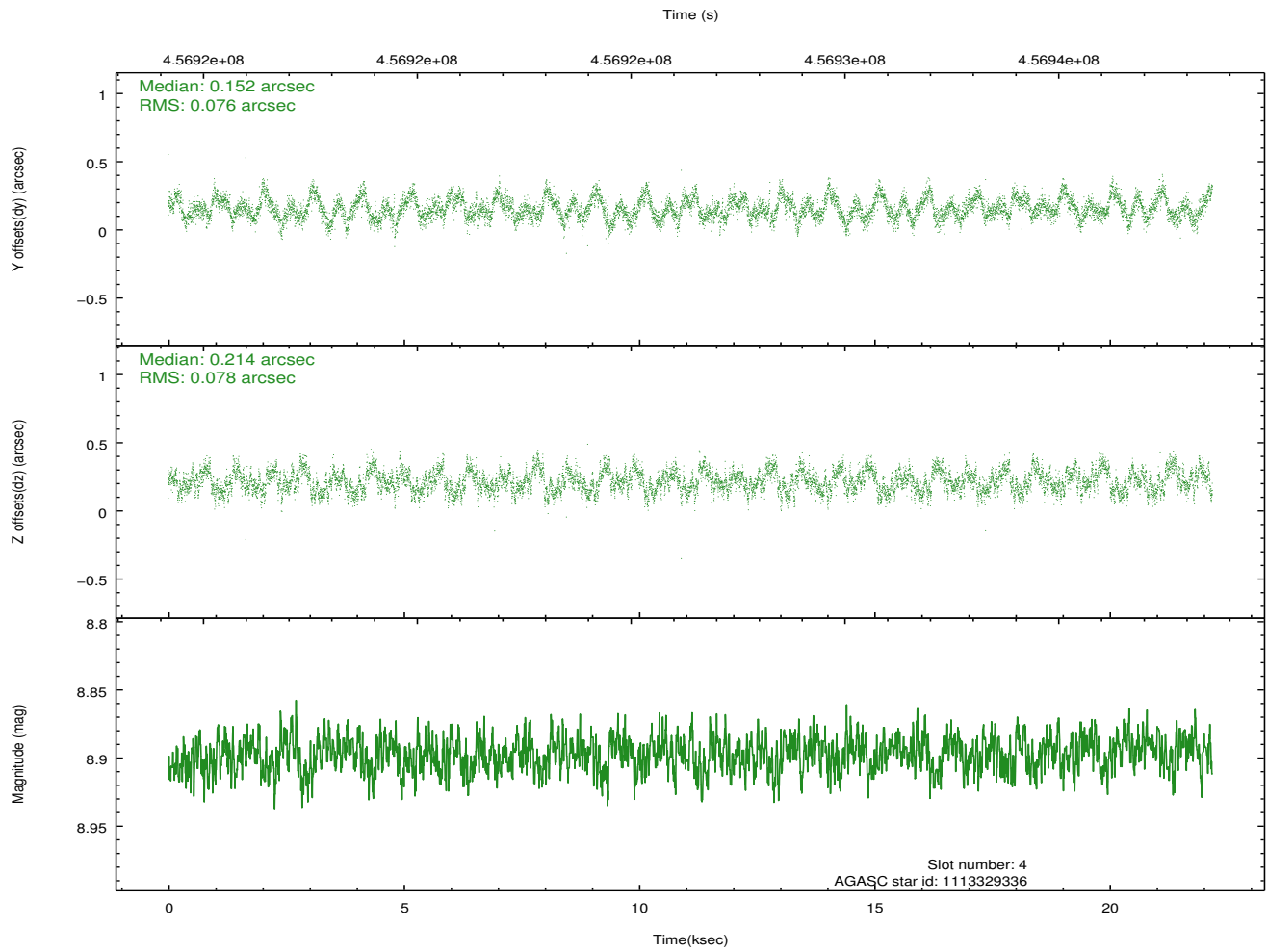
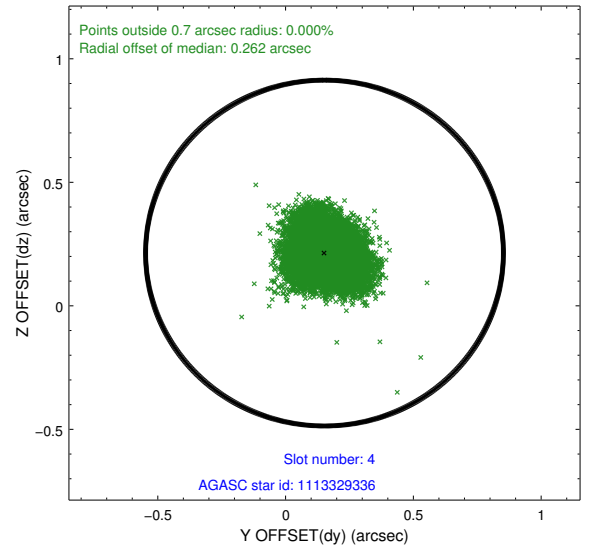
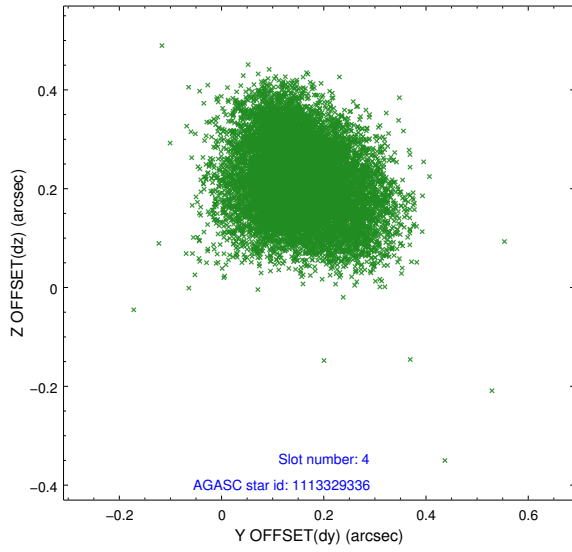
slot	status	id	mag	n_pts	med_dy	med_dz	dr1	dr2	ra	dec	mean_y	mean_z
0	FID	ACIS-I-1	7.07	5412	0.166	-0.125	0.011	0.026	0.000000	0.000000	922.85	-999.83
1	FID	ACIS-I-5	7.07	5411	-0.301	0.135	0.009	0.016	0.000000	0.000000	-1825.67	897.77
2	FID	ACIS-I-6	7.07	5409	0.045	0.060	0.011	0.018	0.000000	0.000000	388.06	1542.41
3	GUIDE	1113329152	9.04	10813	-0.087	-0.279	0.105	0.166	43.526986	-56.796285	-114.41	2167.27
4	GUIDE	1113329336	8.90	10810	0.152	0.214	0.118	0.183	44.262299	-56.192088	-192.13	-451.51
5	GUIDE	1113330056	6.90	10821	-0.104	0.108	0.075	0.126	43.582945	-55.879212	1563.00	-679.07
6	GUIDE	1113336232	9.63	10778	0.022	-0.094	0.191	0.296	42.971246	-56.223989	1927.53	1030.88
7	GUIDE	1113462744	9.63	10748	0.019	0.052	0.158	0.241	44.836673	-56.800948	-2314.08	816.38

2.4 Star Slots

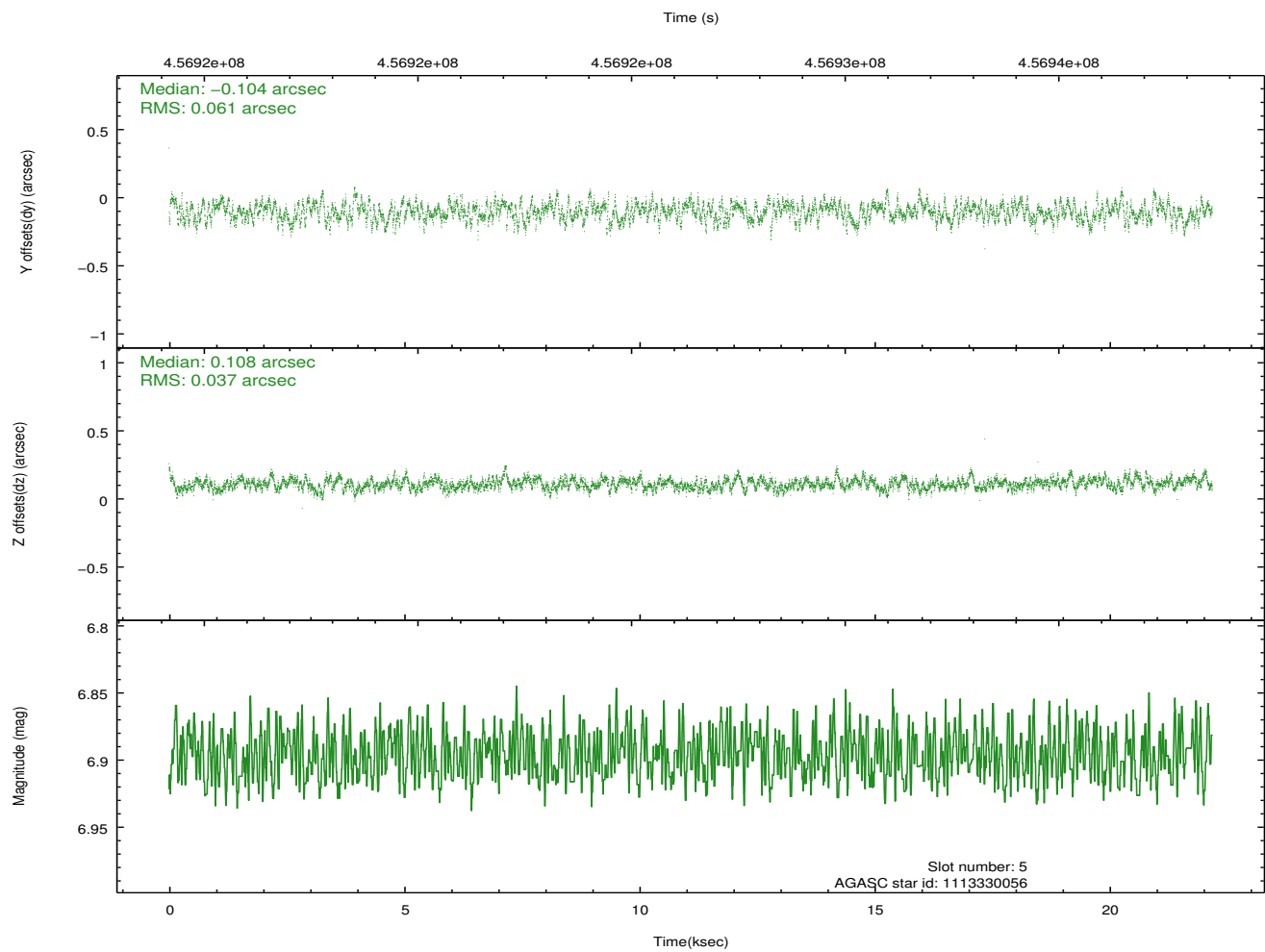
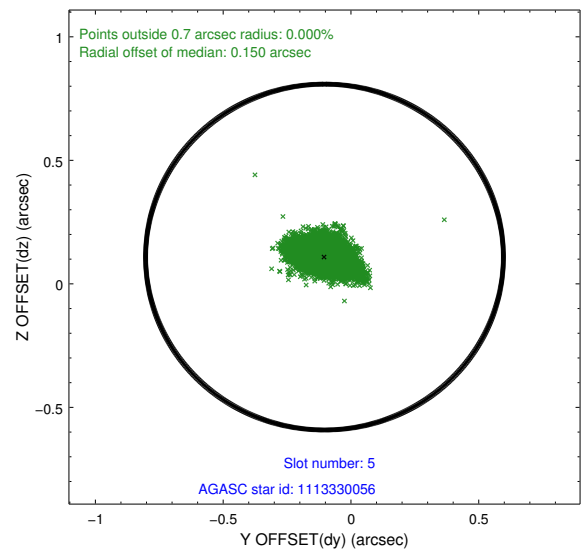
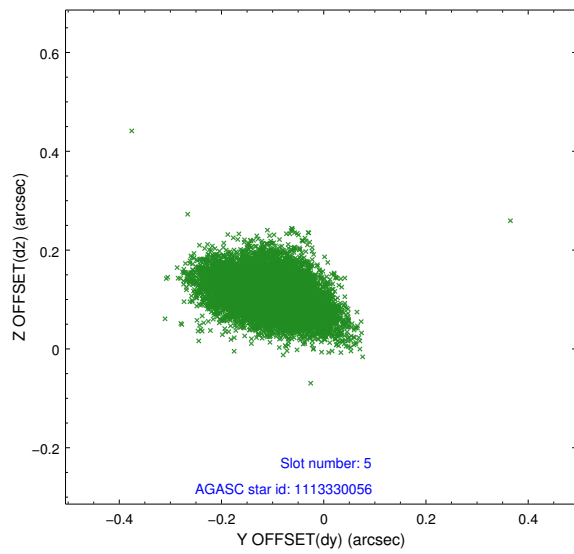
2.4.1 Slot 3



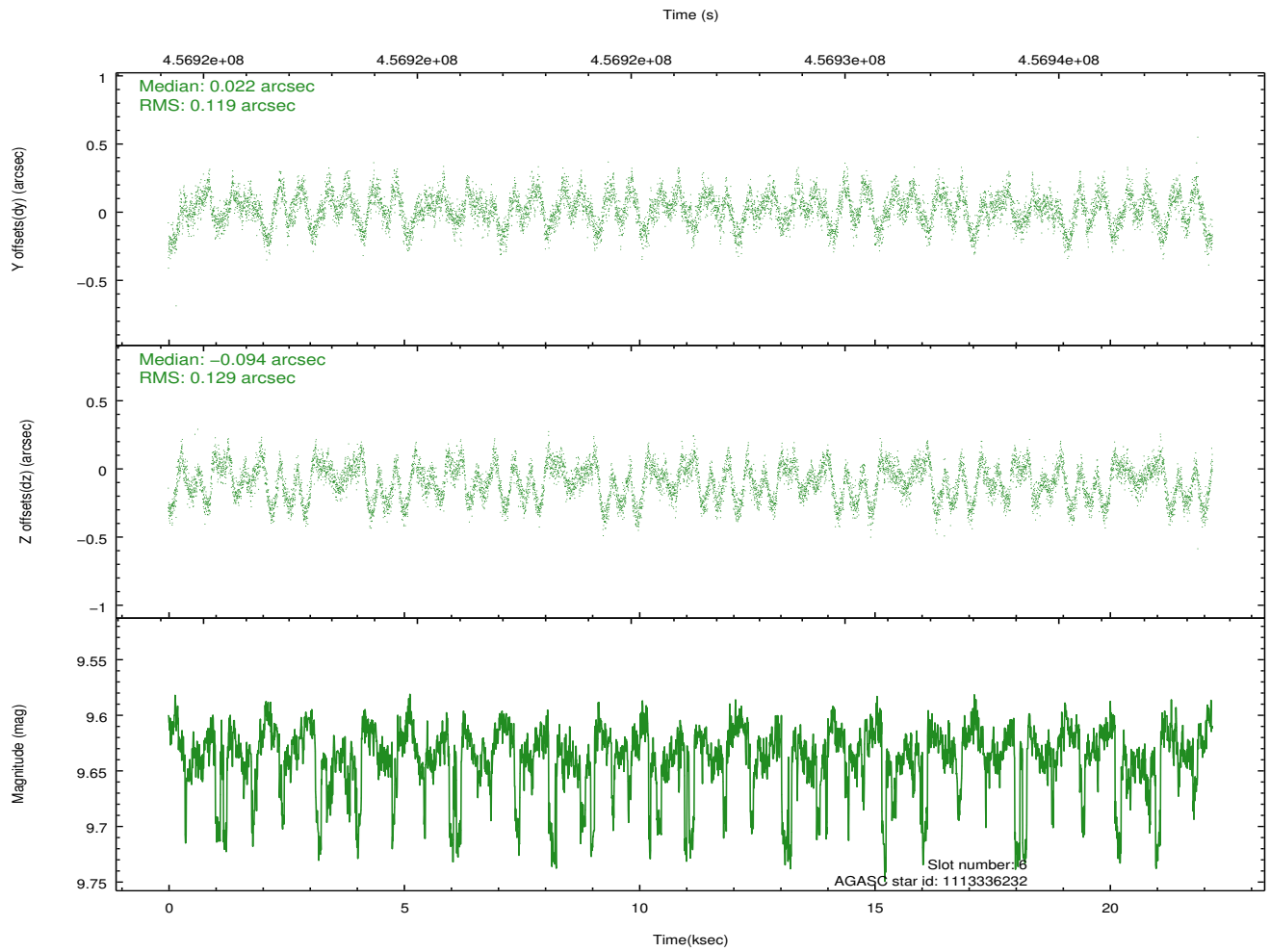
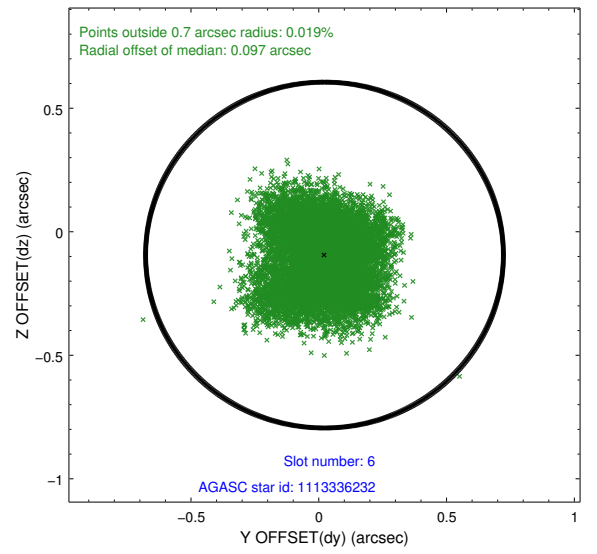
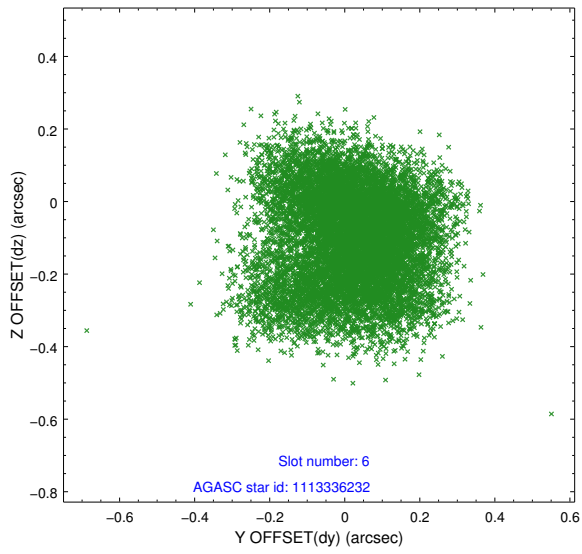
2.4.2 Slot 4



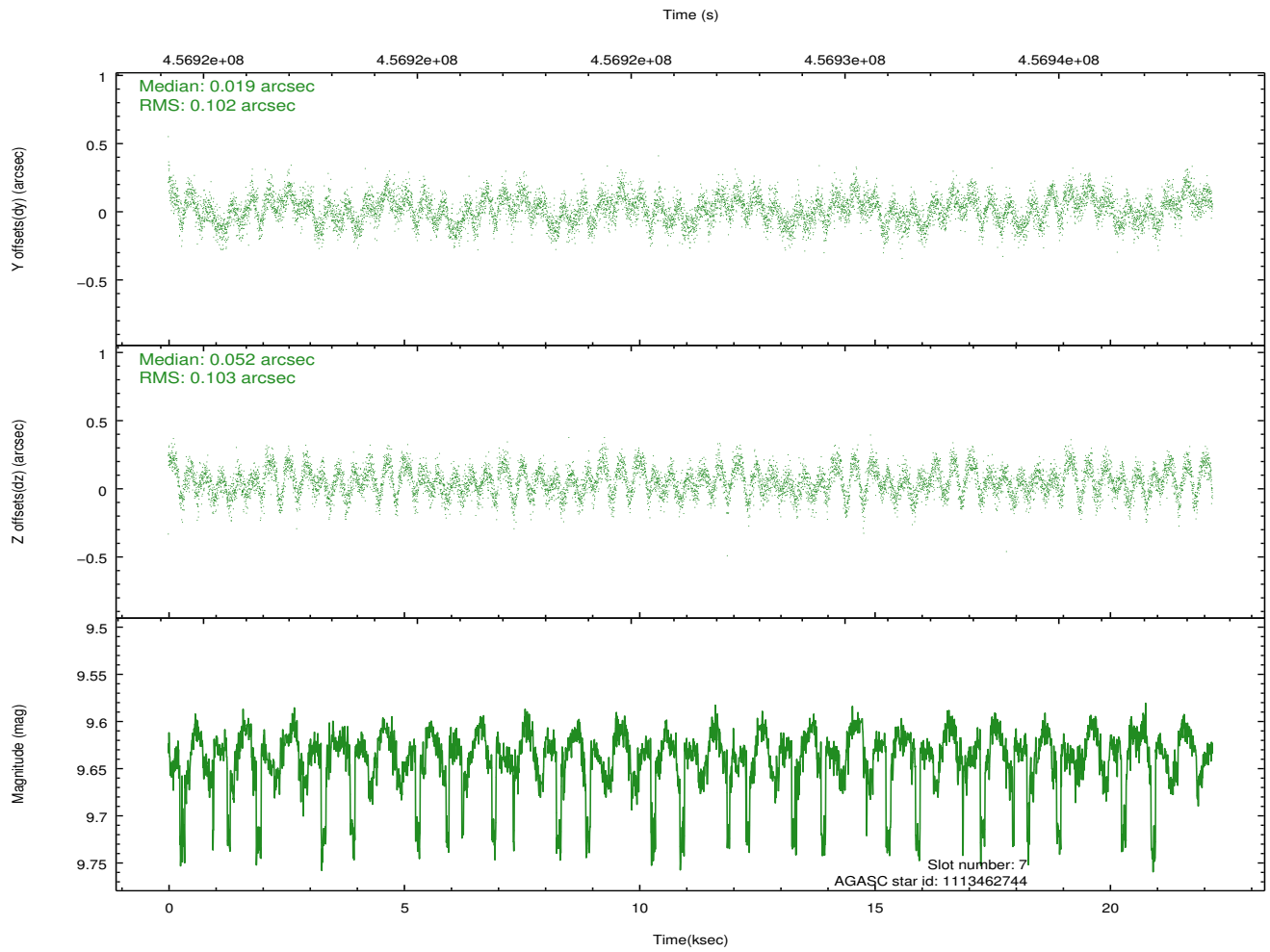
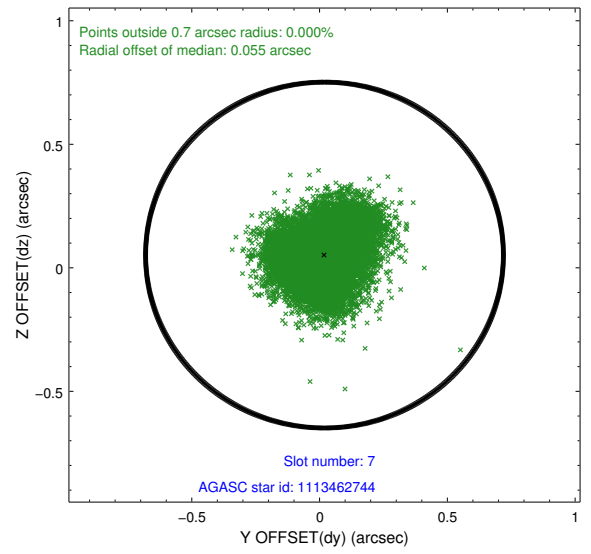
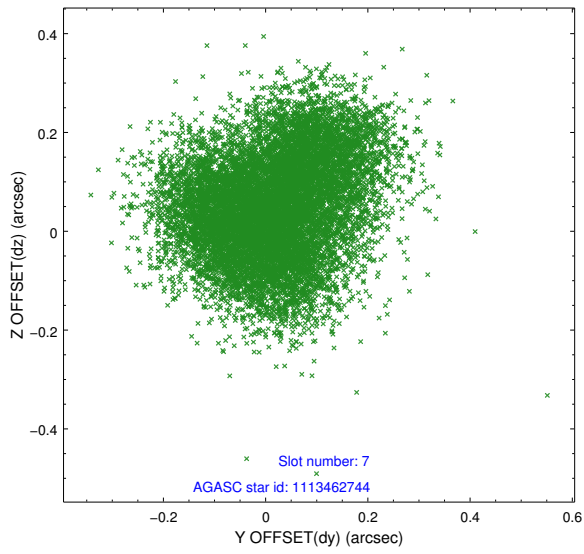
2.4.3 Slot 5



2.4.4 Slot 6

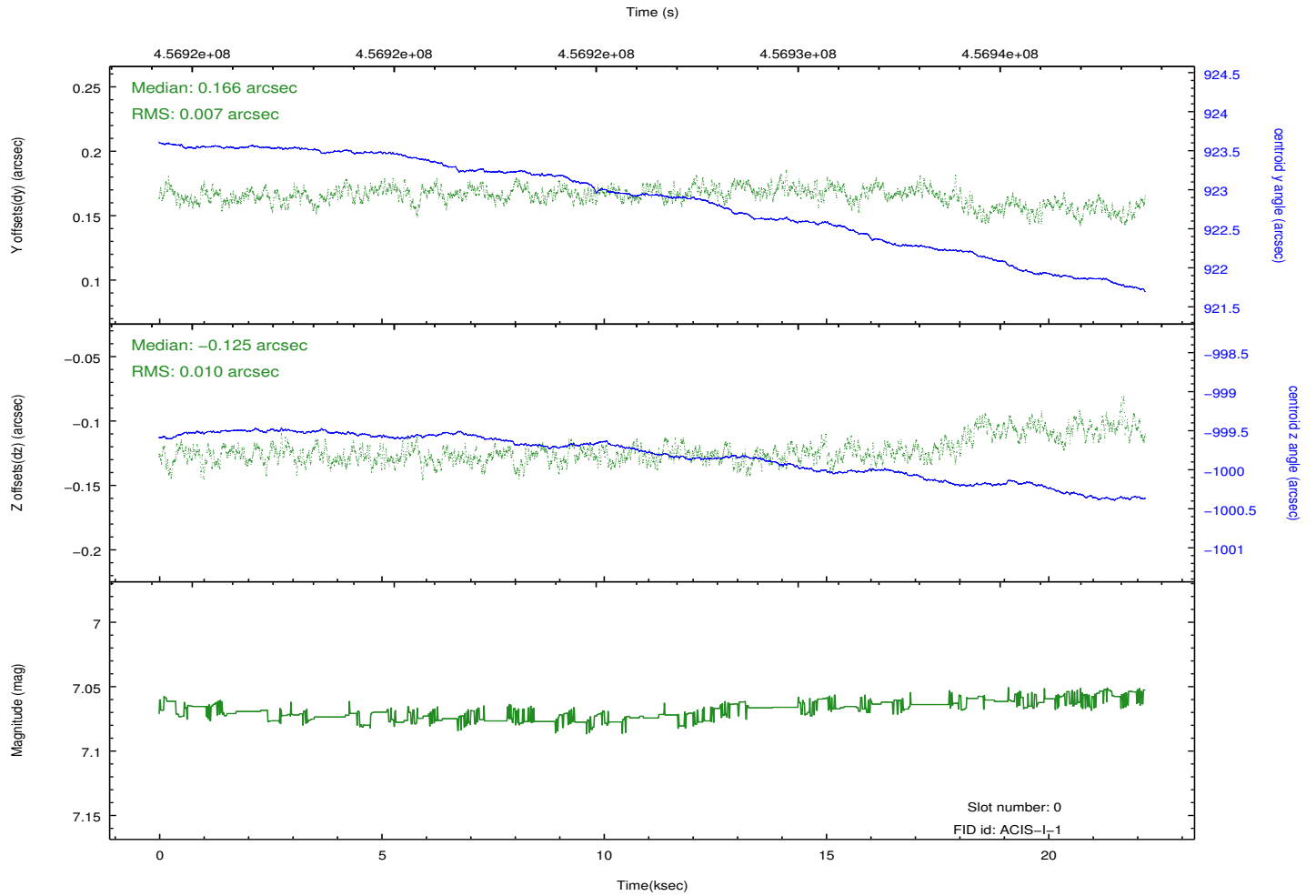
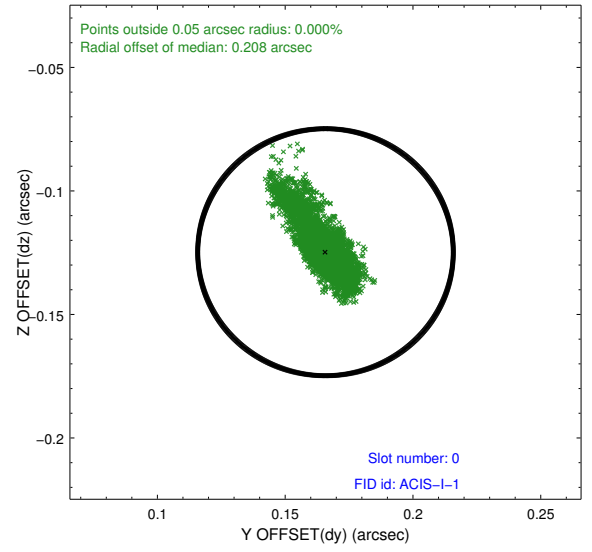
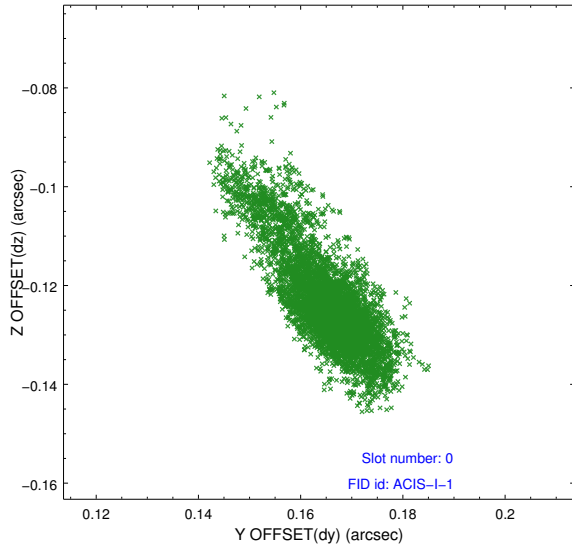


2.4.5 Slot 7

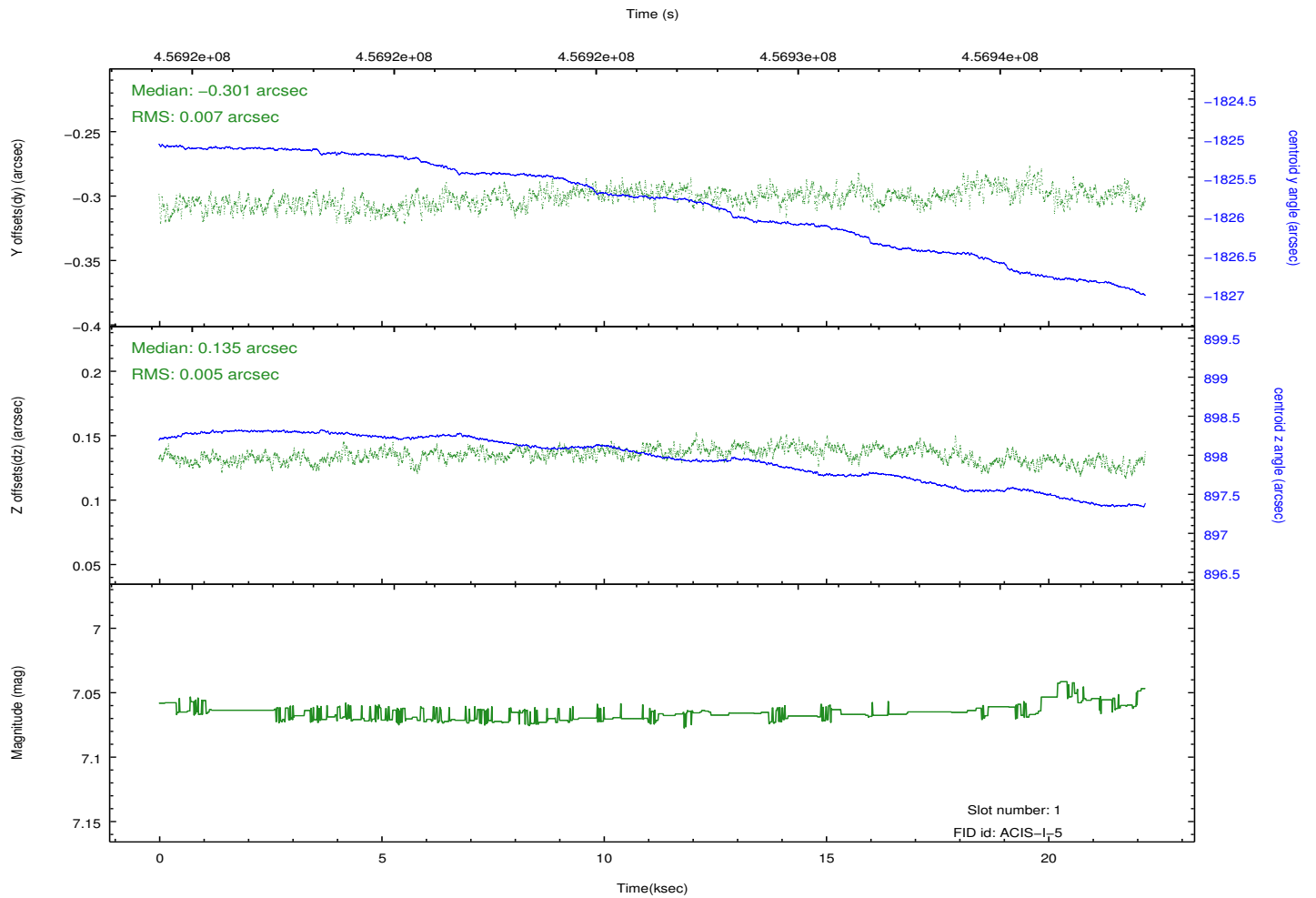
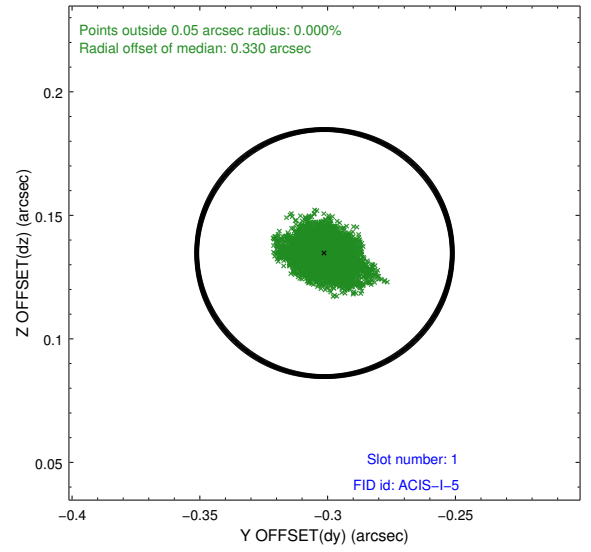
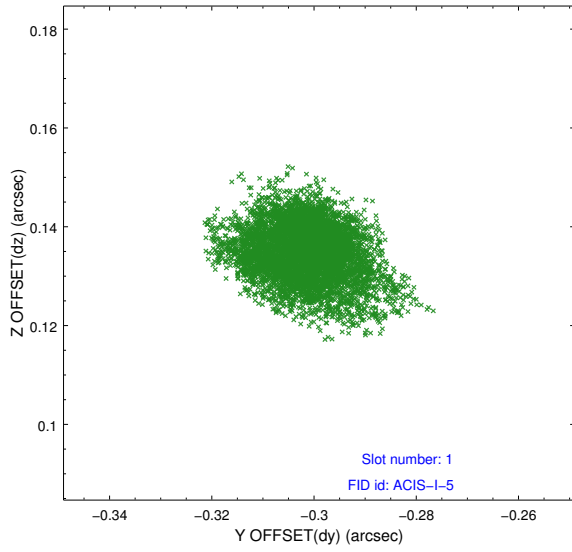


2.5 FID Slots

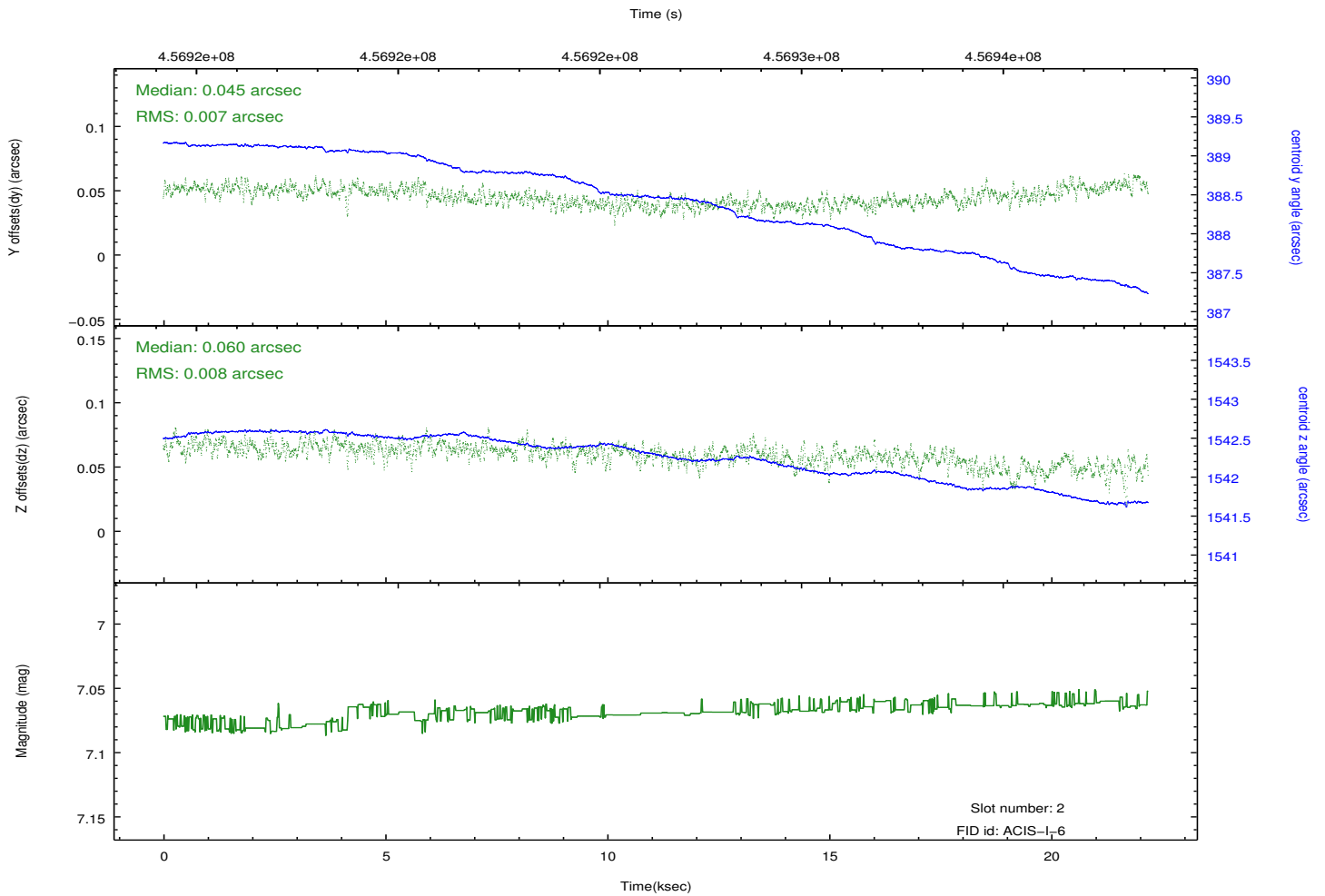
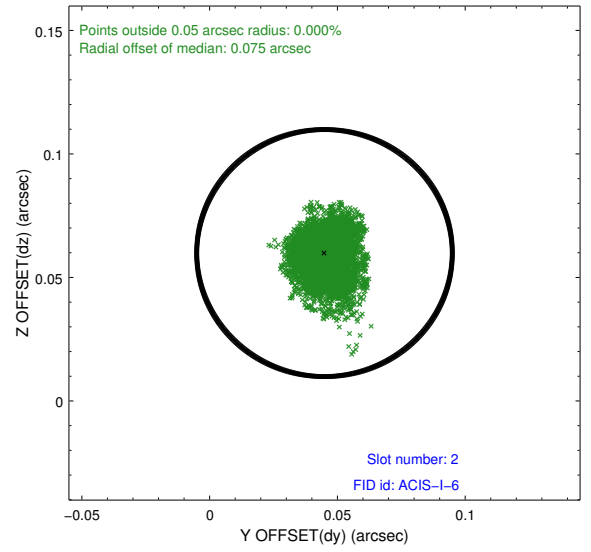
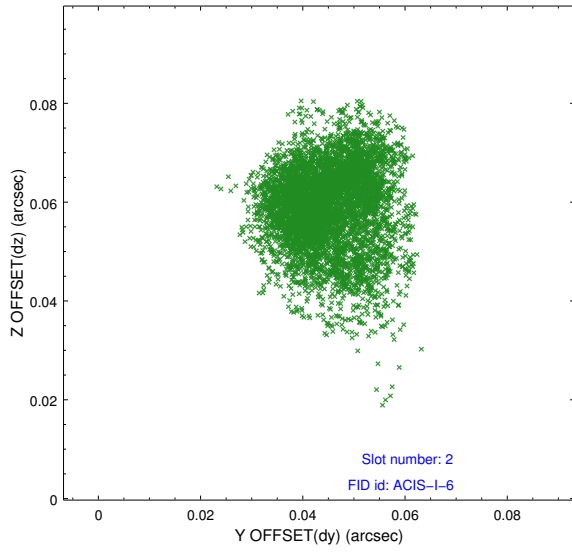
2.5.1 Slot 0



2.5.2 Slot 1



2.5.3 Slot 2



A Summary

A.1 Status

V&V Scientist	Joy Nichols
V&V Date (YYYY-MM-DD)	2012.06.25
V&V Edition	1
V&V Disposition and Status	OK
V&V Charge Time	22.078200169802

A.2 Comments