

V&V Reference Report

L2 ASCDS Version : 8.1.1

Observation 1381 - L2 Version 4
Chandra X-Ray Center

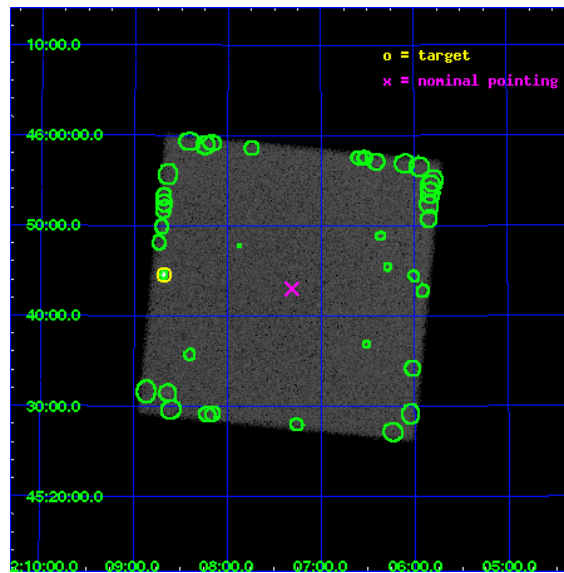
L2 Processing Date : Nov 19 2009

Contents

1	Front	2
2	OBI	3
2.1	OBI	3
2.1.1	Images	3
2.1.2	Parameters	4
2.1.3	Events	4
2.2	Compared Parameters	5
2.3	Aspect	6
2.4	Star Slots	9
2.4.1	Slot 3	9
2.4.2	Slot 4	10
2.4.3	Slot 5	11
2.4.4	Slot 6	12
2.4.5	Slot 7	13
2.5	FID Slots	14
2.5.1	Slot 0	14
2.5.2	Slot 1	15
2.5.3	Slot 2	16
3	Point Sources	17
A	Summary	18
A.1	Status	18
A.2	Comments	18

1 Front

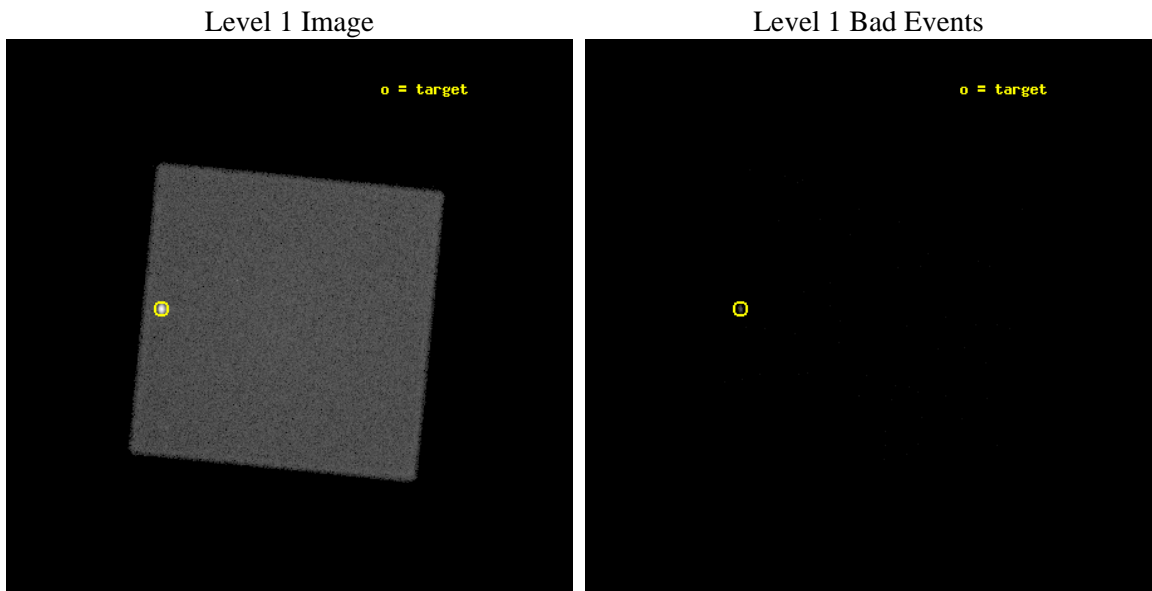
seq_num	280331	Sequence number
obs_id	1381	Observation id
title	 	Proposal title
observer	Dr. CXC Calibration	Principal investigator
object	ArLac	Source name
ra_targ	332.1701	Observer's specified target RA
dec_targ	45.7423	Observer's specified target Dec
ra_nom	331.82776240984	Nominal RA
dec_nom	45.717084735717	Nominal Dec
roll_nom	230.67046539769	Nominal Roll
revision	4	Processing version of data
ontime	8475.9815543517	[s]
livetime	8417.6511898135	Ontime multiplied by DTCOR
l2events	287012	Number of level 2 events



2 OBI

2.1 OBI

2.1.1 Images



2.1.2 Parameters

obi_num	0	Obi number	sched_exp_time	1000.000000	Scheduled observation exposure time
ascdsver	8.1.1	Processing system revision	ontime	8475.9815553501	[s]
caldbver	4.1.4	 	l1events	434790	Number of level 1 events
date	2009-11-19T08:53:36	Date and time of file creation			
revision	4	Processing version of data			

2.1.3 Events

Level 1 Events

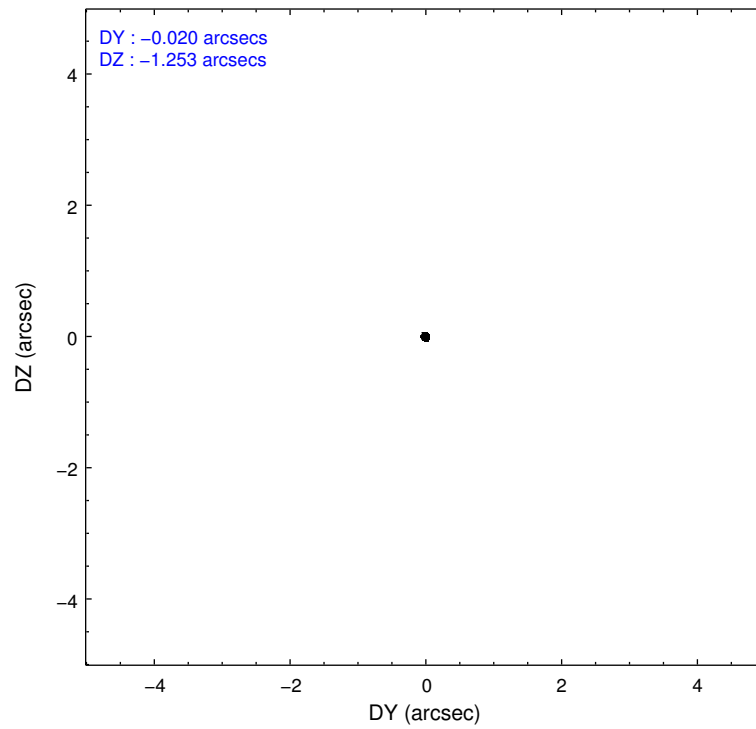
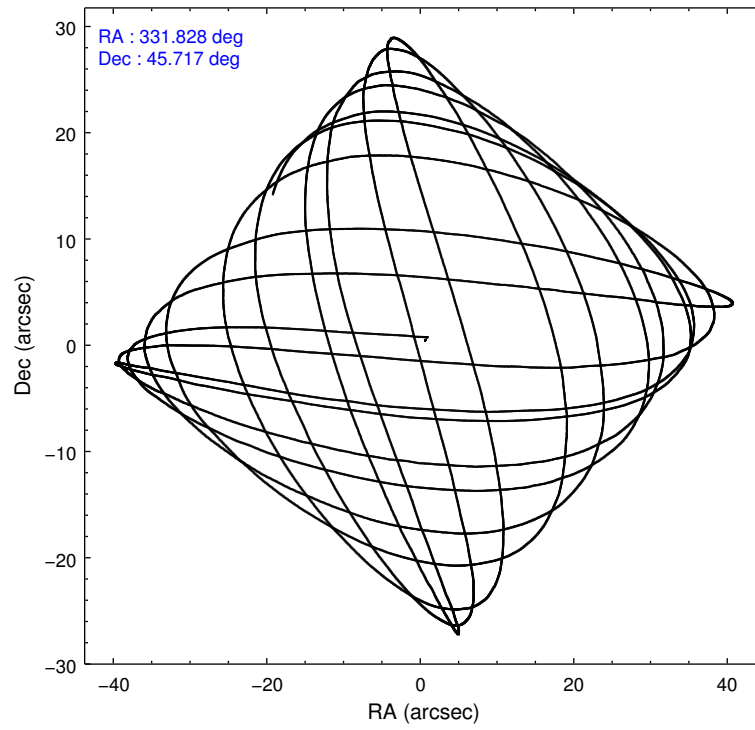
	segment 0
level 1 events	434790
rejected events	2645
rejected %	0%

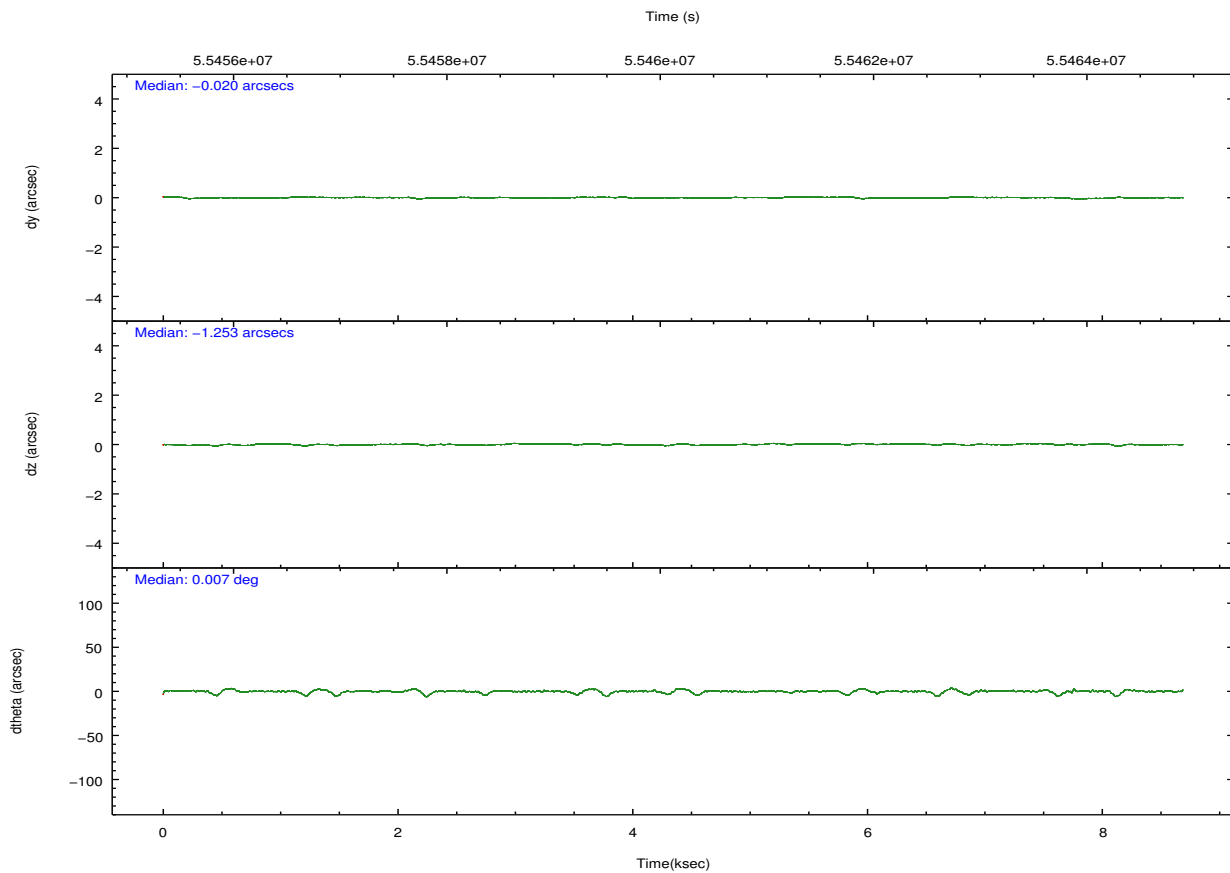
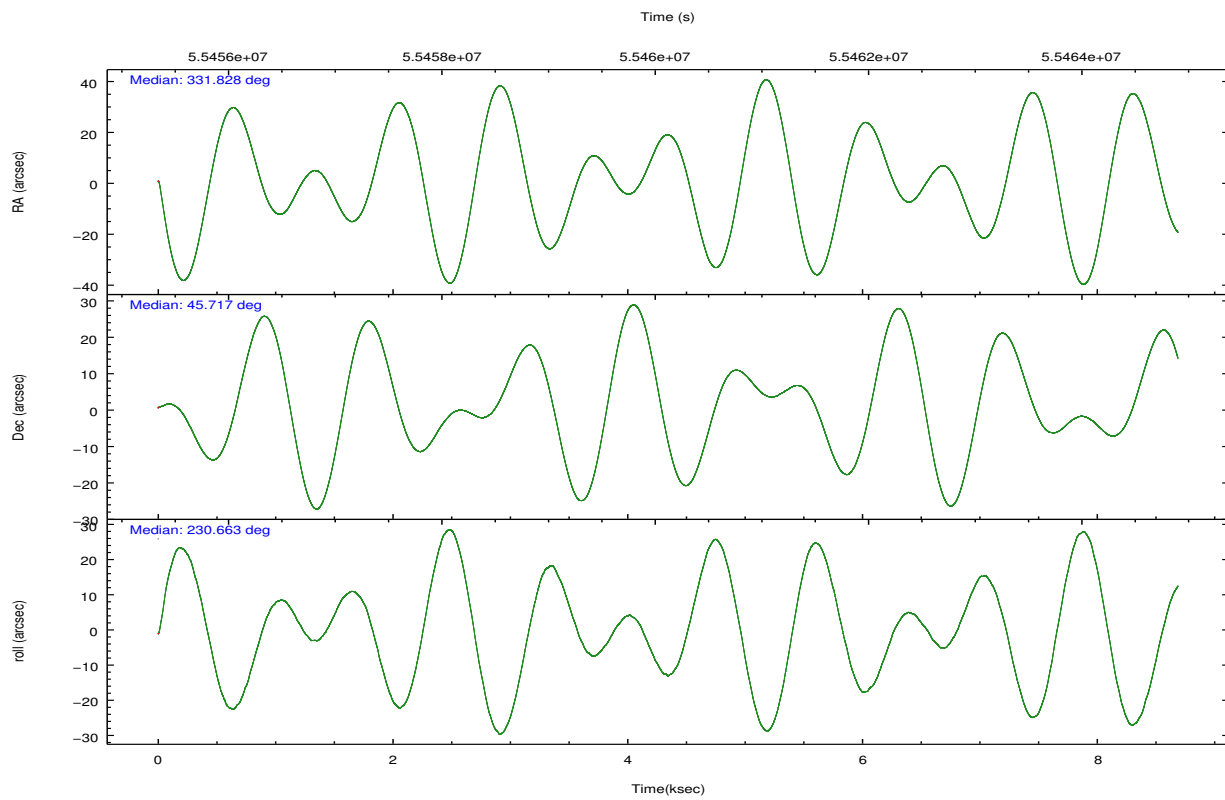
2.2 Compared Parameters

Parameter	Planned	Actual
Instrument	HRC	HRC
Detector	HRC-I	HRC-I
Grating	NONE	NONE
Data mode	OBSERVING	OBSERVING
Observation mode	POINTING	POINTING
Pointing RA	331.834190	331.827762409838
Pointing Dec	45.744017	45.71708473571712
Pointing Roll	230.761350	230.6704653976923
SIM focus pos (mm)	-0.040293	-0.2342646132009995
SIM defocus (mm)	1	0.806028007457875
SIM translation stage pos (mm)	126.985494	126.9854943052878
SIM translation stage offset (mm)	0	-5.413686238853188e-06
Observation start time	55456264.184000	55455597.785235
Observation start date	1999-10-04T20:30:00	1999-10-04T20:19:57
Observation end time	55457264.184000	55464597.798059
Observation end date	1999-10-04T20:46:40	1999-10-04T22:49:57

Parameter	Planned	Actual
Obspar format version number	6	6
Obspar file type	PREDICTED	ACTUAL
Obspar update status	NONE	UPDATED

2.3 Aspect



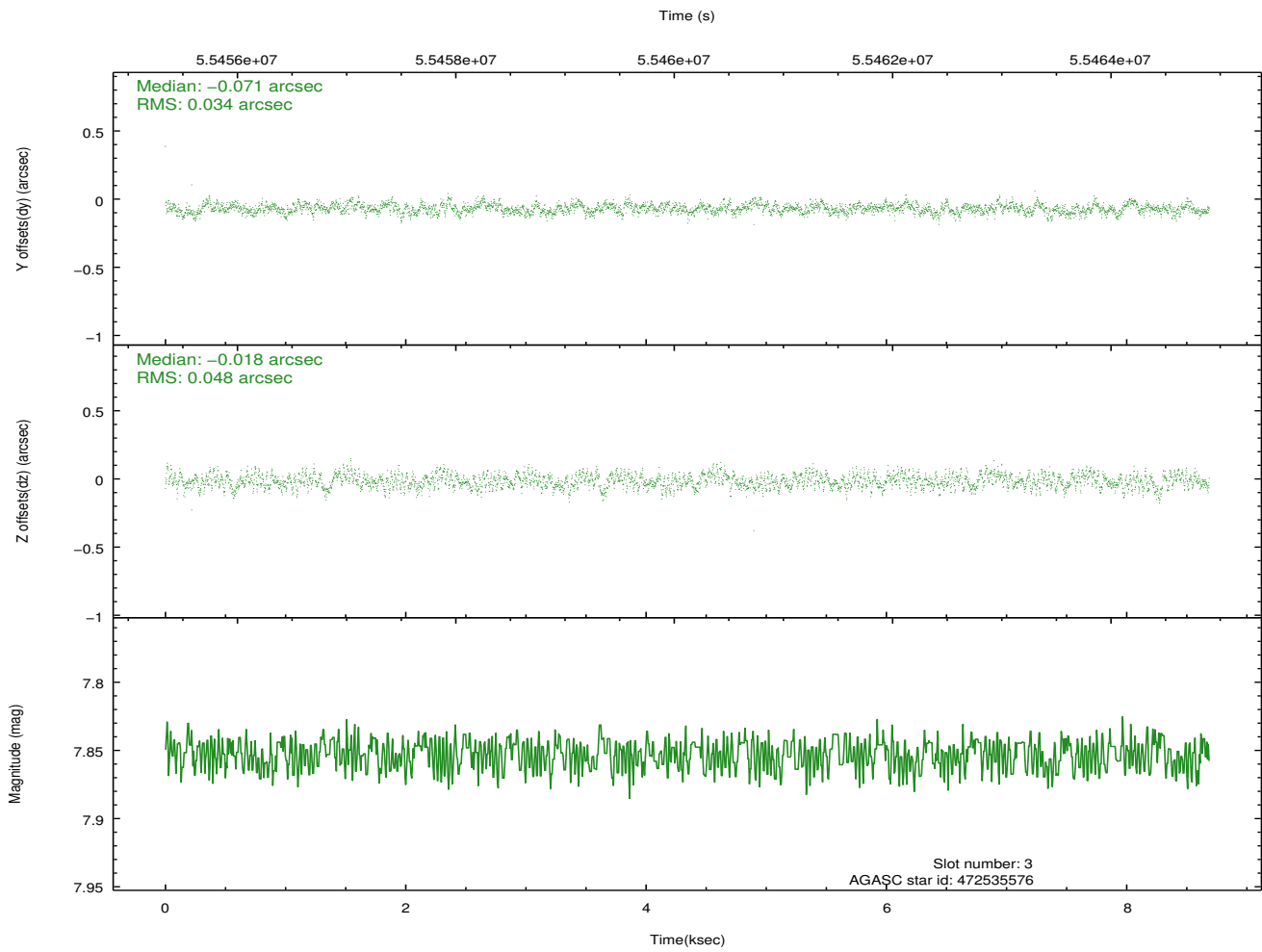
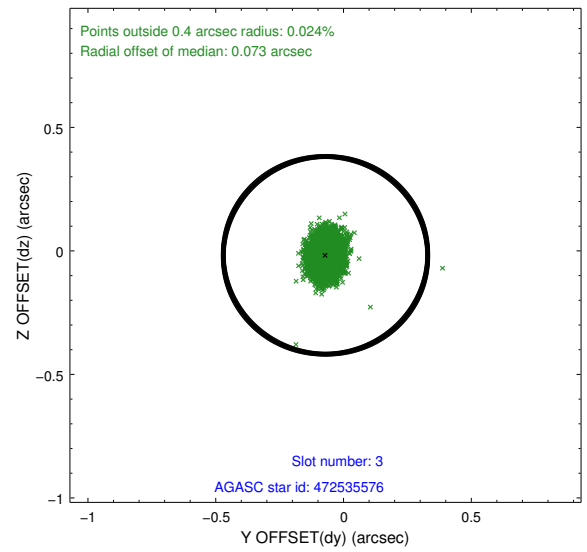
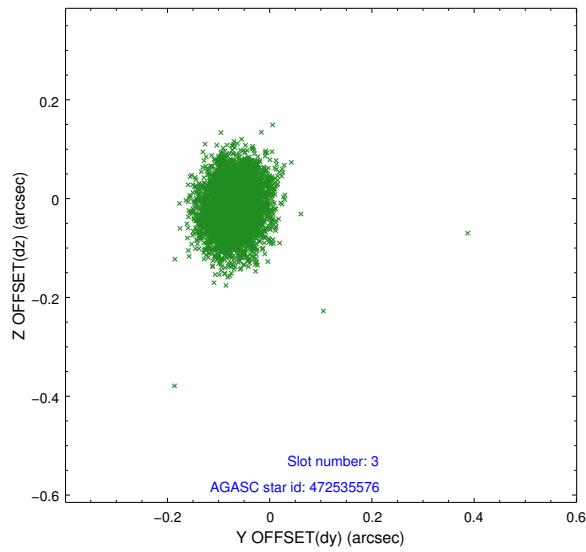


Slot Statistics

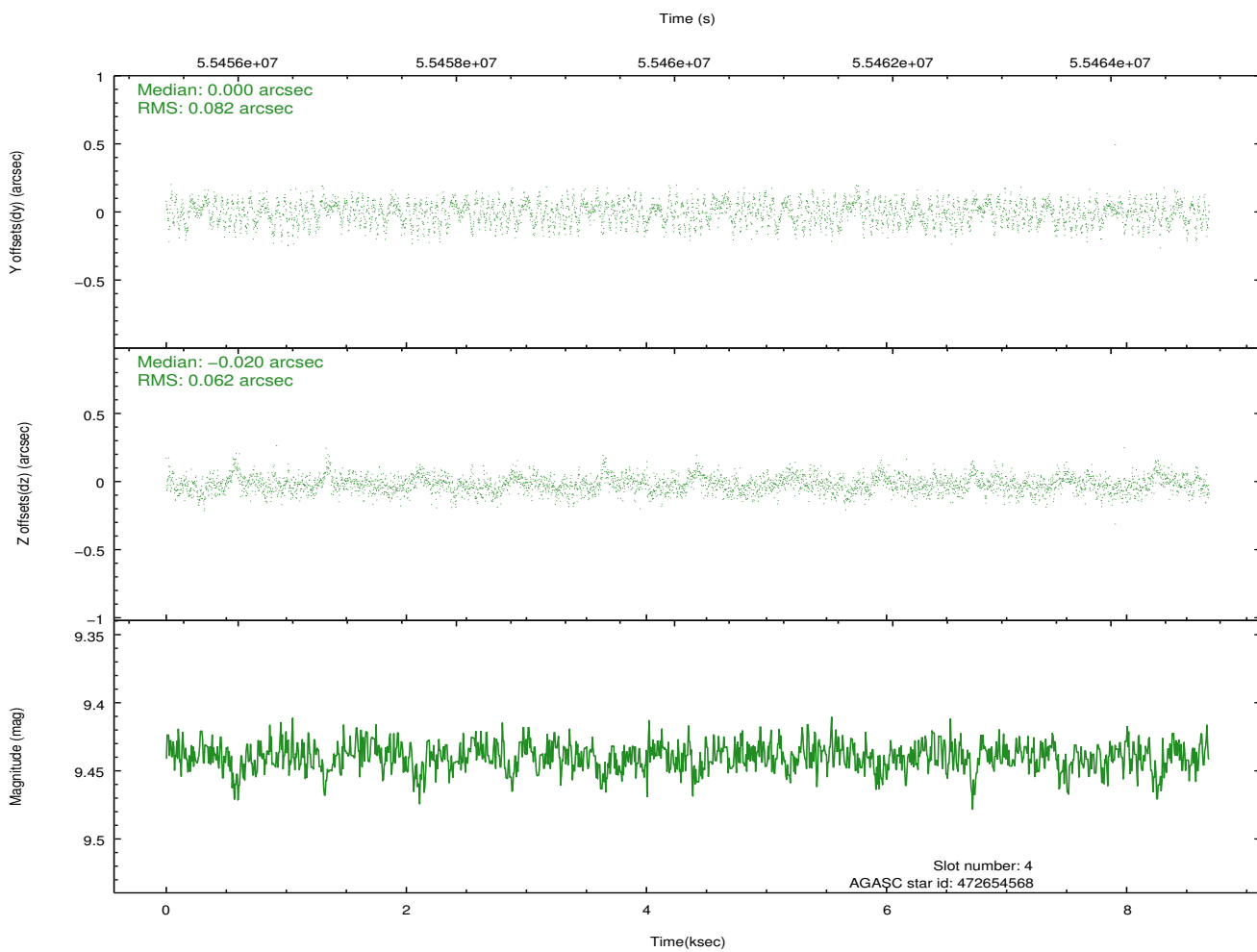
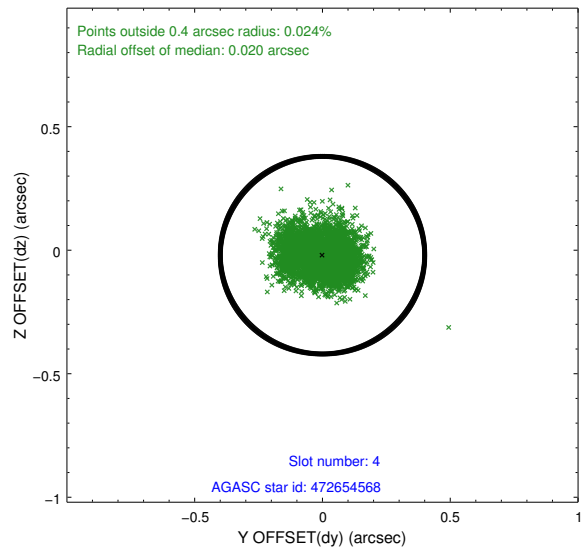
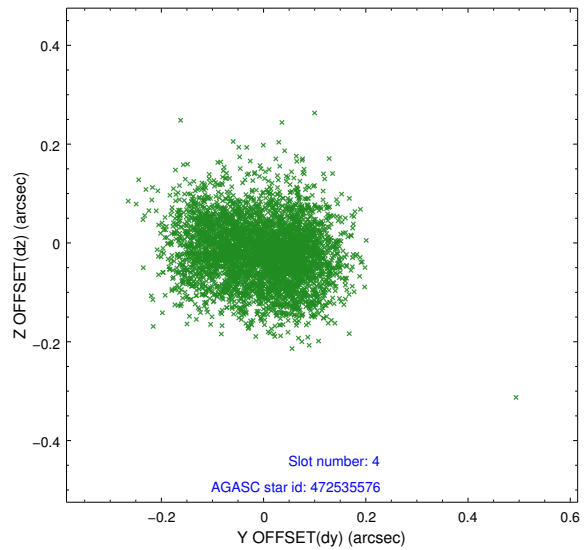
slot	status	id	mag	n_pts	med_dy	med_dz	dr1	dr2	ra	dec	mean_y	mean_z
0	FID	HRC-I-1	6.97	4239	0.047	-0.029	0.012	0.033	0.000000	0.000000	-755.36	-1286.57
1	FID	HRC-I-3	7.06	4238	0.045	-0.021	0.010	0.023	0.000000	0.000000	-1184.12	1017.88
2	FID	HRC-I-4	6.99	4238	0.022	-0.040	0.012	0.032	0.000000	0.000000	1287.23	1016.07
3	GUIDE	472535576	7.85	4239	-0.071	-0.018	0.062	0.100	331.438373	46.291802	-906.06	-2010.80
4	GUIDE	472654568	9.44	4238	0.000	-0.020	0.111	0.174	332.194449	45.063576	1315.95	2258.32
5	GUIDE	472655152	9.43	4235	-0.021	0.041	0.105	0.169	332.504239	45.862991	-1399.36	1026.94
6	GUIDE	472524416	9.48	4236	0.122	-0.075	0.115	0.177	330.789917	45.626718	1977.02	-1778.64
7	GUIDE	472655704	9.48	4235	-0.026	0.069	0.124	0.211	332.167195	45.285228	744.77	1697.57

2.4 Star Slots

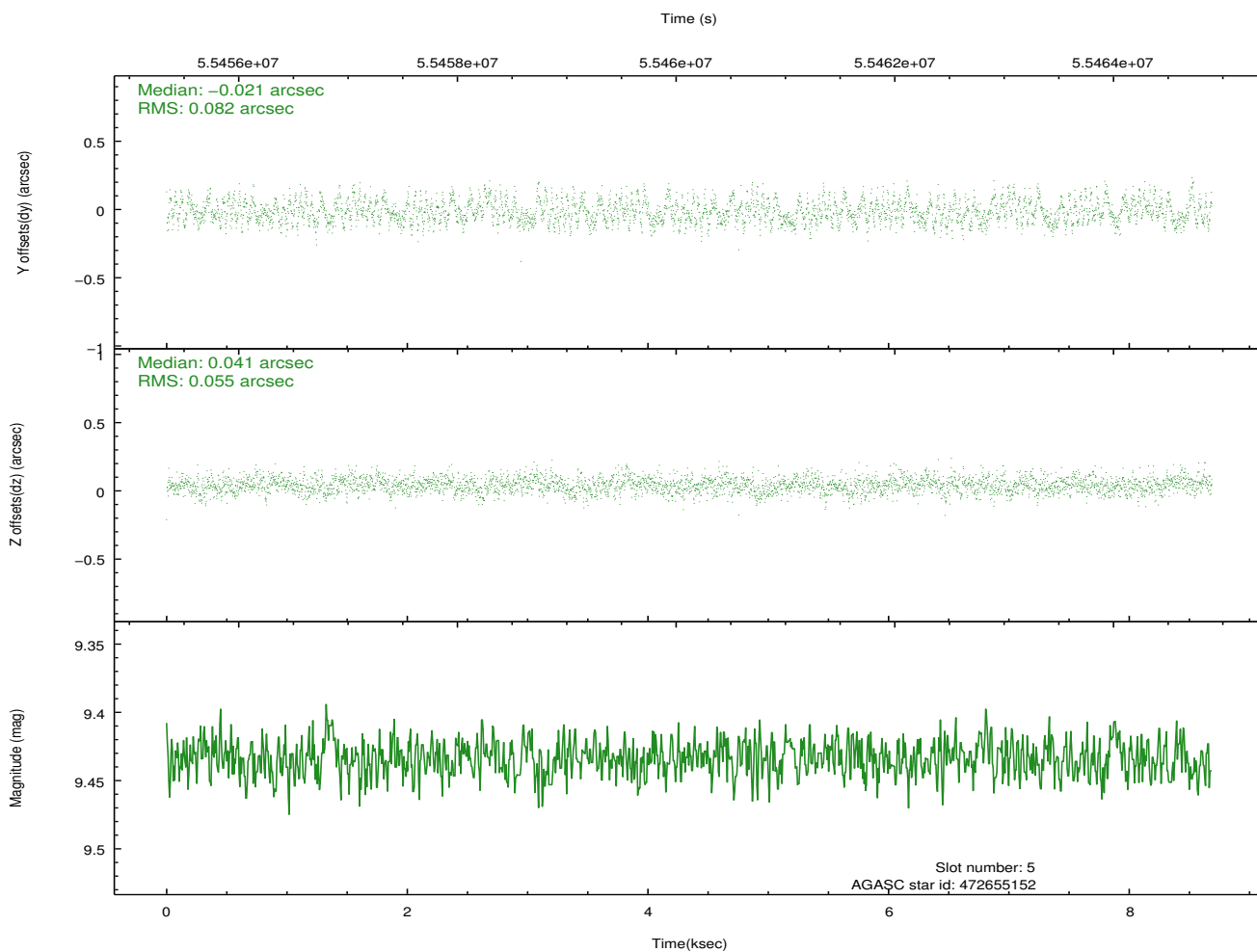
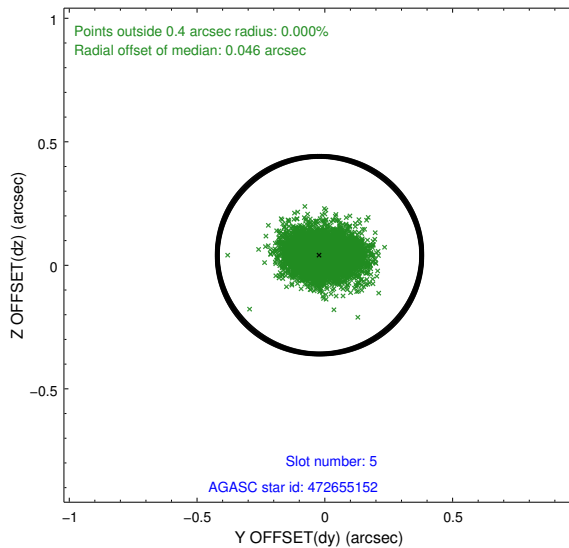
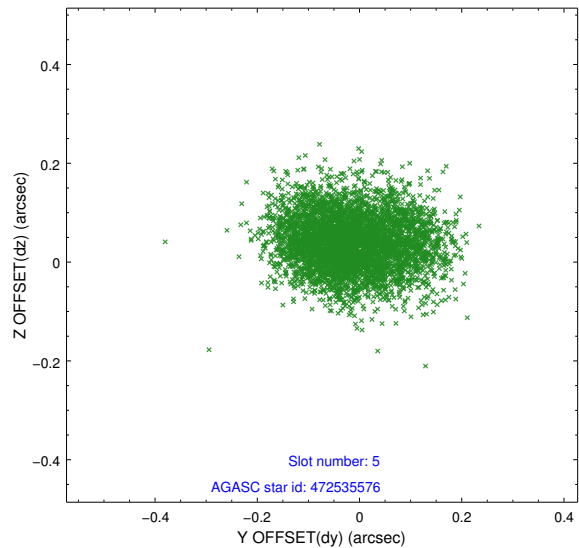
2.4.1 Slot 3



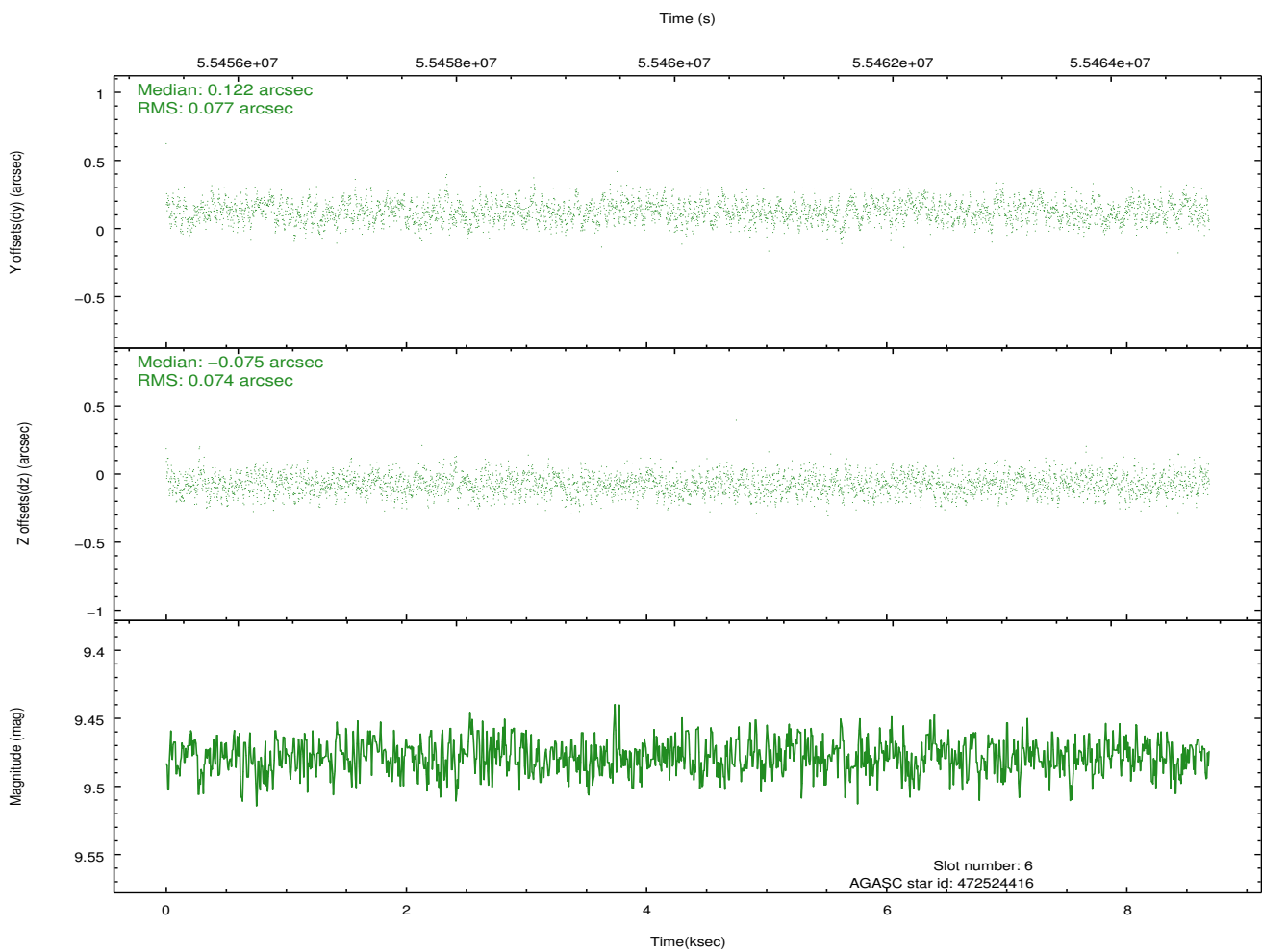
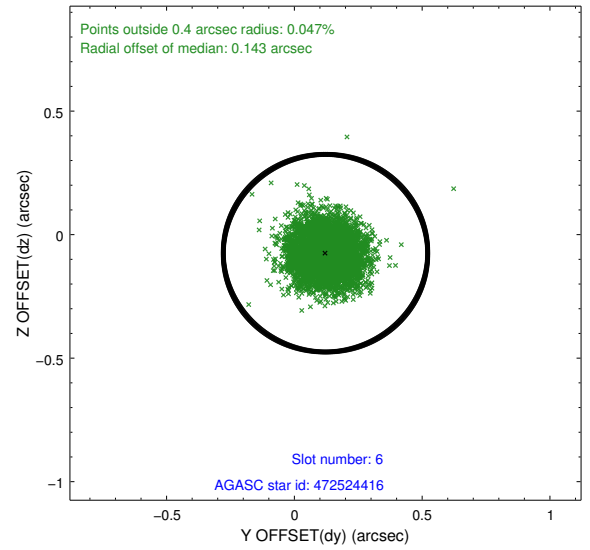
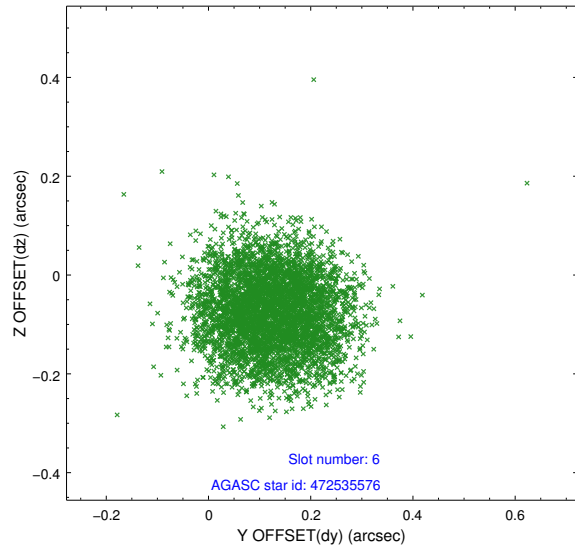
2.4.2 Slot 4



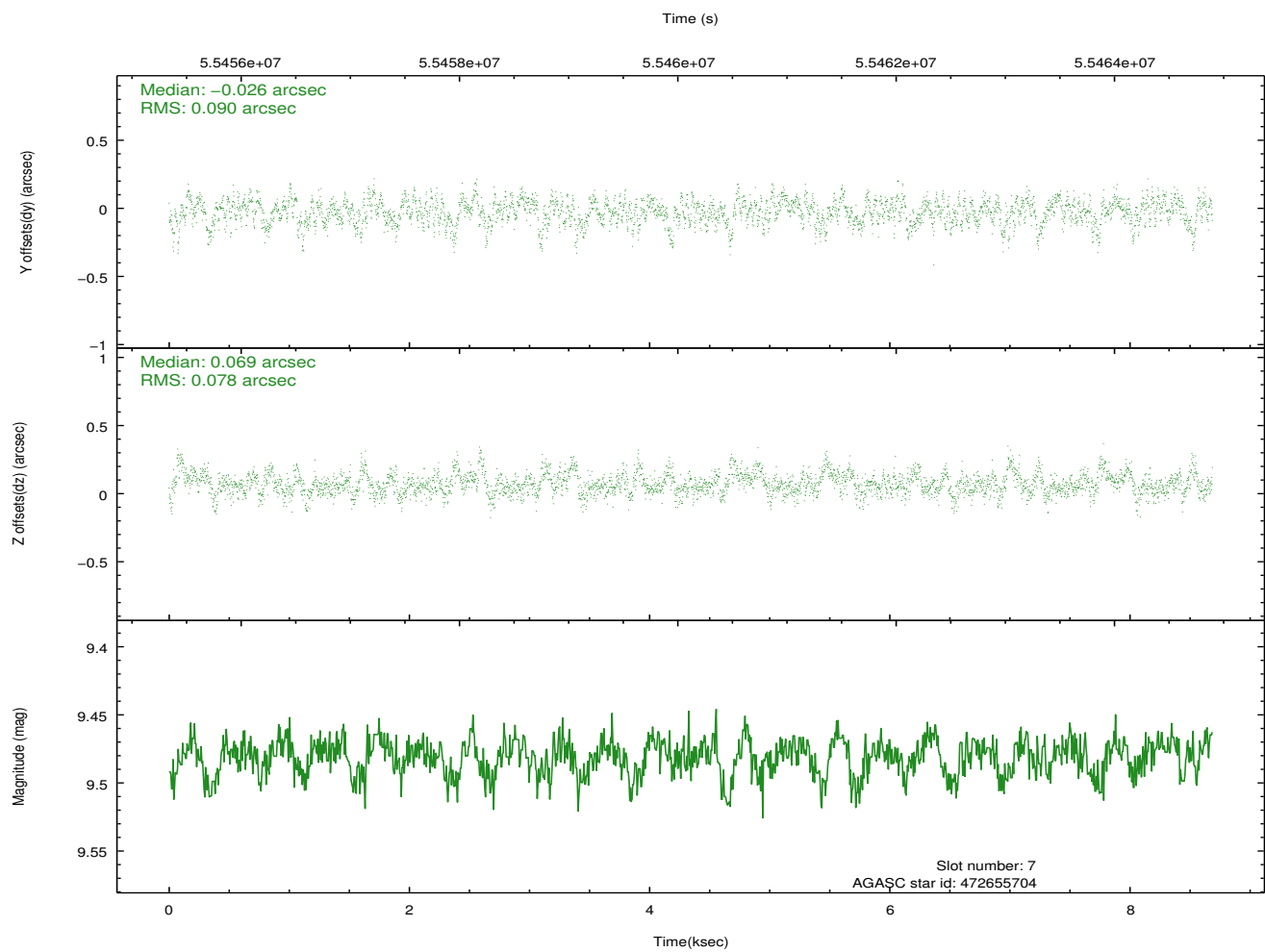
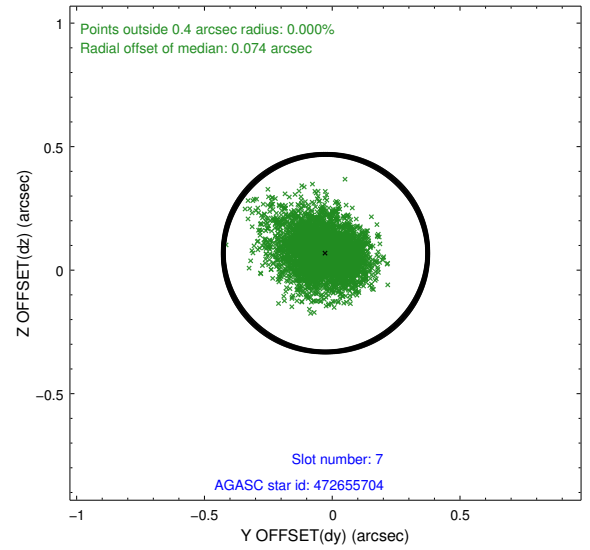
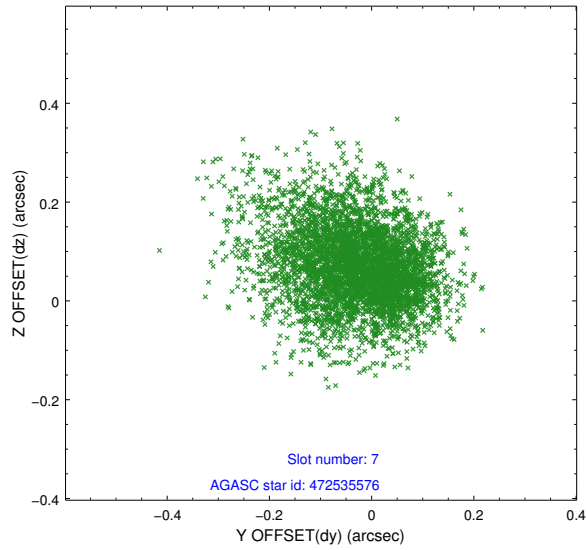
2.4.3 Slot 5



2.4.4 Slot 6

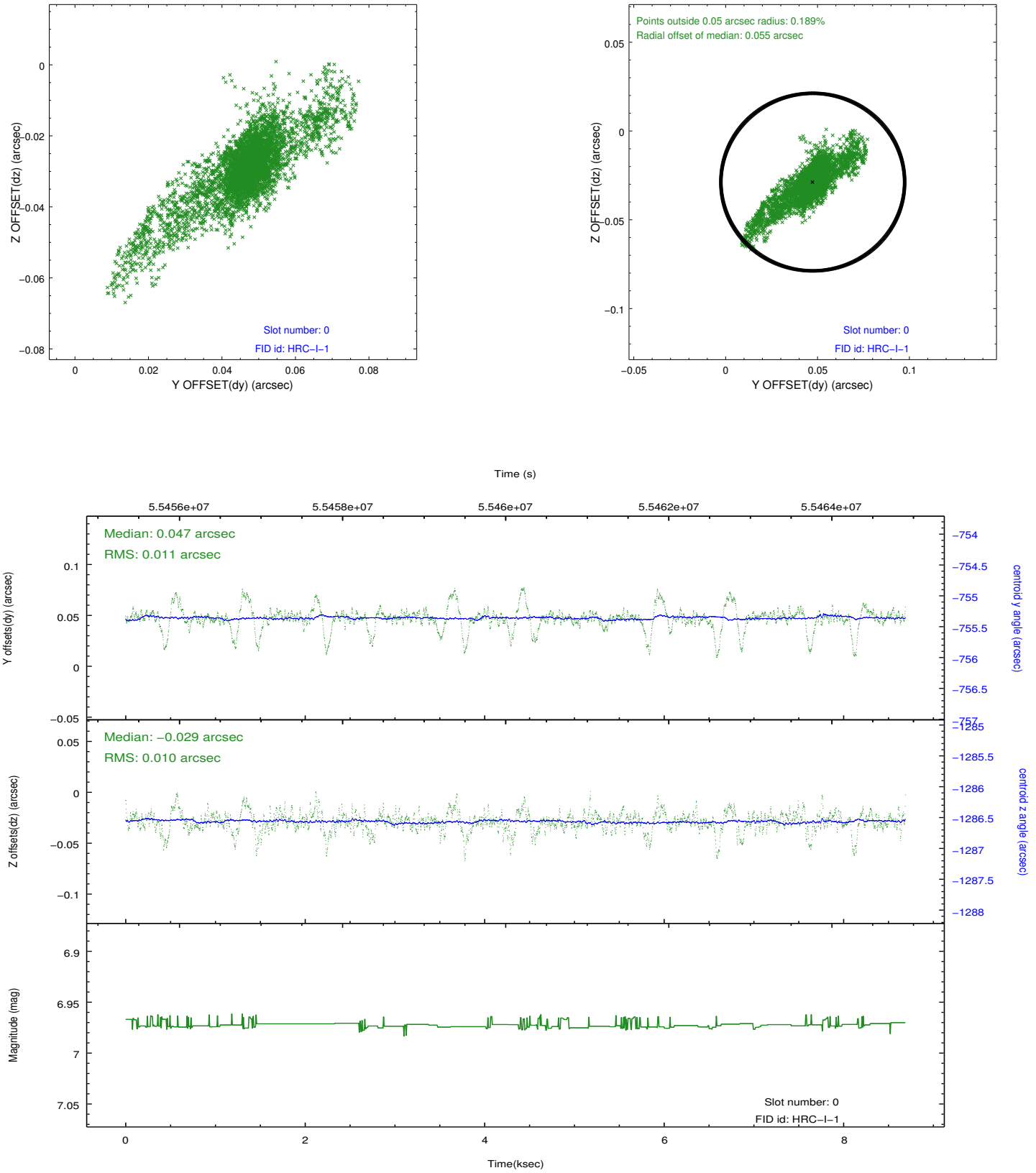


2.4.5 Slot 7

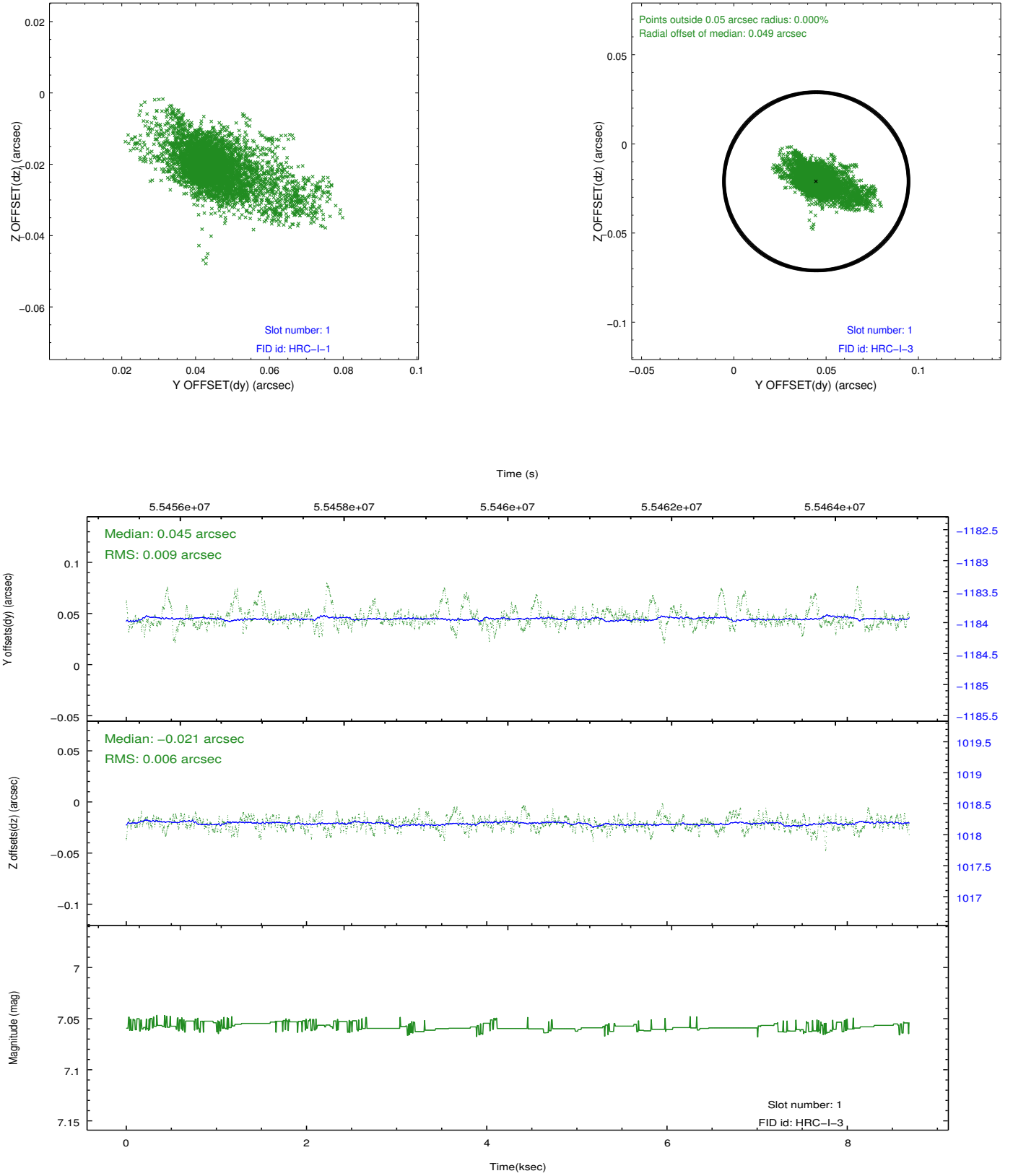


2.5 FID Slots

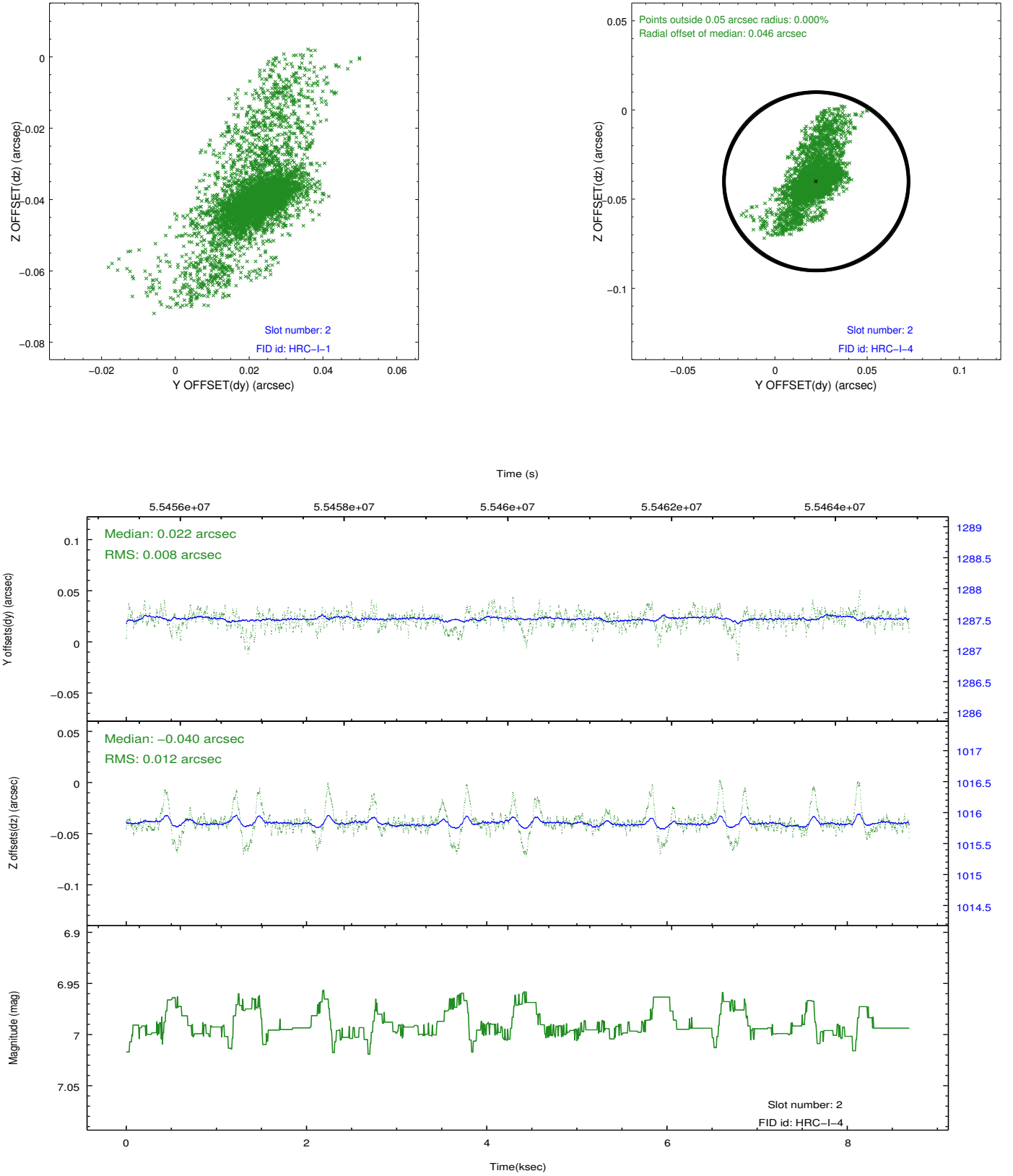
2.5.1 Slot 0



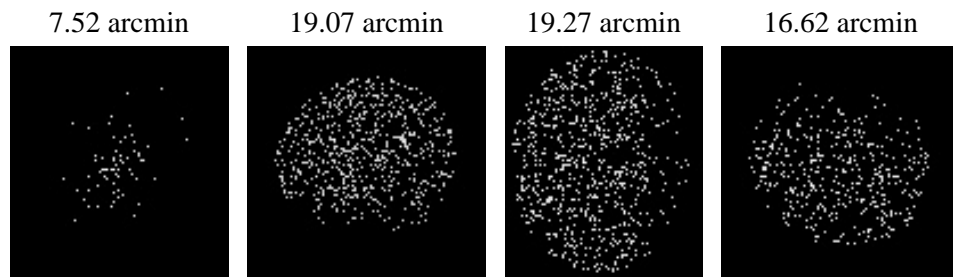
2.5.2 Slot 1



2.5.3 Slot 2



3 Point Sources



A Summary

A.1 Status

V&V Scientist	Joy Nichols
V&V Date (YYYY-MM-DD)	2009.11.21
V&V Edition	1
V&V Disposition and Status	OK
V&V Charge Time	8.471

A.2 Comments

The ObsID series 1319-1382 were intended to access the HRC-I gain variation across the detector as a function of MCP HV. They were performed as triples (3 different HV settings at each Y-/Z-offset). The best HRC-I focus was not determined at the time the observations were performed (the data to determine that were being analyzed during this series).